

Accepted Manuscript

Research papers

Thermal discontinuities along a lowland river: the importance of urban areas and lakes

Roshni Arora, Marco Toffolon, Klement Tockner, Markus Venohr

PII: S0022-1694(18)30393-7

DOI: <https://doi.org/10.1016/j.jhydrol.2018.05.066>

Reference: HYDROL 22843

To appear in: *Journal of Hydrology*

Received Date: 30 November 2017

Revised Date: 28 May 2018

Accepted Date: 29 May 2018



Please cite this article as: Arora, R., Toffolon, M., Tockner, K., Venohr, M., Thermal discontinuities along a lowland river: the importance of urban areas and lakes, *Journal of Hydrology* (2018), doi: <https://doi.org/10.1016/j.jhydrol.2018.05.066>

This is a PDF file of an unedited manuscript that has been accepted for publication. As a service to our customers we are providing this early version of the manuscript. The manuscript will undergo copyediting, typesetting, and review of the resulting proof before it is published in its final form. Please note that during the production process errors may be discovered which could affect the content, and all legal disclaimers that apply to the journal pertain.

Thermal discontinuities along a lowland river: the importance of urban areas and lakes

Roshni Arora^{1,2,3}, Marco Toffolon³, Klement Tockner^{1,2,4} and Markus Venohr¹

¹Leibniz-Institute of Freshwater Ecology and Inland Fisheries, Müggelseedamm 310, 12587 Berlin, Germany

²Institute of Biology, Freie Universität Berlin, Takustrasse 3, 14195 Berlin, Germany

³Department of Civil, Environmental and Mechanical Engineering, University of Trento, via Mesiano 77, 38123 Trento, Italy

⁴Austrian Science Fund (FWF), Sensengasse 1, 1090 Vienna, Austria

*Correspondence to: Roshni Arora, Leibniz-Institute of Freshwater Ecology and Inland Fisheries, Justus-von-Liebig-Strasse 7, Adlershof, 12489 Berlin, Germany

E-mail: arora@igb-berlin.de; roshni.arora@yahoo.com

Highlights

- Spatial thermal heterogeneity and its temporal variability was investigated along 195 km of the River Spree, Germany.
- Heterogeneity was quantified via heat budget, semi-empirical and statistical models.
- Four thermal sections, induced by lakes and an urban area, were identified.
- Thermal heterogeneity was expressed at different time scales.
- Urban areas significantly affect stream temperature.

ABSTRACT

Despite increasing knowledge on the spatio-temporal dynamics of river temperature, a master water quality variable, it remains a challenge to identify the landscape variables influencing thermal heterogeneity along entire river courses. The present study investigated the spatial heterogeneity of stream temperature (ST), and the role of landscape variables, at 20 locations along the 195 km course of the intensively managed lowland River Spree (NE Germany) over a period of nine months. Along the river, four distinct thermal sections were identified, created by thermal discontinuities induced by lakes and an urban area. Three approaches, namely heat budget modelling (estimating the unresolved residual heat flux), both in Eulerian and Lagrangian form, semi-empirical *air2stream* modelling, and statistical correlations were applied to quantify the observed thermal heterogeneity and the role of climatic (air temperature) and landscape variables (land use, lakes, stream azimuth). Urban areas and lakes were identified as heat sources (in summer), which induced ST discontinuities at different time scales (daily, monthly and during the entire study period). Statistical correlations showed that heat inputs and ST increased with increasing urban area and decreased with distance from lakes. Furthermore, comparison of observed STs and those simulated via the Lagrangian model revealed that heat advection was the dominant thermal process in a lake-influenced section and persisted over a distance of up to 20 km. Simulations showed that this effect could not be significantly diminished even by complete riparian shading along the section, as the sub-daily ST reduced by an average of only 1.5°C. Hence, plantation of riparian buffers should be complemented with additional mitigation measures such as improving the groundwater table recharge, managing the temperature of urban discharges, to mitigate climate change impacts on ST.

Keywords: stream temperature; longitudinal heterogeneity; land use; urban; lakes; riparian; heat budget; *air2stream* model

1. INTRODUCTION

In ecological systems, heterogeneity is defined as the ‘complexity and variability in a system property in space and time’ (Li and Reynolds, 1995). Natural heterogeneity in physical and chemical properties, such as water temperature, controls biodiversity and ecosystem processes along entire river courses (Vannote *et al.*, 1980; Isaak and Rieman, 2013). Spatial heterogeneity and temporal variability in water temperature, which is a pivotal water quality variable (Webb 1996; Friberg *et al.*, 2009; Johnson *et al.*, 2014), occur longitudinally, laterally and vertically in a river (Webb *et al.*, 2008). Disruption in the natural thermal regime due to climate change, land use alteration, and modifications in river morphology and water flow affects the distribution and survival of aquatic organisms. For example, thermal refugia, which are thermal zones vital for many freshwater organisms during thermally unsuitable conditions, control the distribution of stenotherms (Poole *et al.*, 2001).

During the past decades, rising river temperature trends have been documented worldwide (Kaushal *et al.*, 2010; van Vliet *et al.* 2011; Isaak *et al.*, 2012; Markovic *et al.*, 2013; Rice and Jastram, 2015; Arora *et al.*, 2016), and these trends will most likely continue in the near future (van Vliet *et al.*, 2013). Although our understanding of the underlying mechanisms controlling thermal heterogeneity along rivers has progressed (Arscott *et al.*, 2001; Brown and Hannah, 2008; Monk *et al.*, 2013; Dugdale *et al.*, 2015; Fullerton *et al.*, 2015), major gaps remain (Webb *et al.*, 2008; Hannah and Garner, 2015). For example, spatial heterogeneity of water temperature along medium and large rivers, and at intermediate scales (e.g. 10 to 100 kilometers and greater), has received little attention so far (Fullerton *et al.*, 2015, 2018). Also, thermal stress within such rivers, particularly those situated in the lowlands, due to alteration of the thermal regime is a major concern and a key factor threatening freshwater ecosystem processes (Isaak and Rieman, 2013). Hence, quantifying and understanding spatial thermal heterogeneity, and its temporal variability, along river courses demands specific attention.

River temperature at a particular location and a specific date is a function of energy and hydrological fluxes at the interfaces between air, water and the streambed (Hannah and Garner, 2015). Hence, alterations in air temperature, flow, morphology and land use modify the energy fluxes and, therefore, influence thermal heterogeneity (Imholt *et al.*, 2013; Hannah and Garner, 2015; Fullerton *et al.*, 2015). While variation in climatic factors (air temperature, precipitation) and the hydrological regime (such as due to large reservoirs, e.g., Ellis and Jones, 2013; Cai *et al.*, 2018) are responsible for large-scale patterns in water temperature, river morphology and land use primarily act at local scales. The influence of land use, particularly of riparian cover (see review by Moore *et al.*, 2005; Malcolm *et al.*, 2008) and urbanization (LeBlanc *et al.*, 1997; Nelson and Palmer, 2007; Somers *et al.*, 2013; Booth *et al.*, 2014; Dugdale *et al.*, 2018), on river temperature has been investigated widely. Indeed, there is clear evidence that the removal of the riparian vegetation and the presence of urban areas substantially increase local and regional river temperature (Moore *et al.*, 2005; Somers *et al.*, 2013). While riparian vegetation cover has been frequently used to determine river thermal heterogeneity (Pedersen and Sand-Jensen, 2007; Hrachowitz *et al.*, 2010; Broadmeadow *et al.*, 2011; Mayer, 2012; Imholt *et al.*, 2013; Hebert *et al.*, 2011; Garner *et al.*, 2014), few studies have investigated the role of urban and agricultural cover (Chang and Psaris, 2013; Sun *et al.*, 2014). In some cases, forest cover was a better explanatory variable for river temperature heterogeneity than urban or agricultural cover (Chang and Psaris, 2013; Sun *et al.*, 2014). In other cases, higher river temperature warming rates and sensitivities were observed due to the presence of urban areas (Kaushal *et al.*, 2010; Kelleher *et al.*, 2012; Rice and Jastram, 2015).

Along rivers, the influence of land use on thermal heterogeneity has been studied at large scales (Booth *et al.*, 2014), or among systems that differ in land use (Nelson and Palmer, 2007; Somers *et al.*, 2013). To our knowledge, no study has yet quantified the effects of

different land use types on thermal heterogeneity along an entire river course. We expect that local land use types (e.g., forest, urban, agricultural areas) alter thermal patterns along rivers (i.e., longitudinal heterogeneity), similar to what has been observed for air temperatures (urban heat island profile, EPA (2008)). Hence, in the present study, we quantified the spatial heterogeneity of water temperature and its temporal variability along a ~200 km lowland river (River Spree, NE Germany), which traverses a mosaic of forested, agricultural and urban areas, as well as shallow natural lakes and weirs. Specifically, we addressed the following questions:

- 1) How does stream temperature (ST) vary along the river course, and are there distinct thermal discontinuities (i.e. abrupt changes) defining longitudinal heterogeneity?
- 2) Are riparian forest, urban and agricultural buffer widths critical in inducing thermal discontinuities along the river course? At which temporal scales (daily, monthly, entire study period) are the effects of land use on thermal heterogeneity most evident?
- 3) How do lakes and geographic orientation (i.e. azimuth) of a river reach affect thermal heterogeneity?
- 4) Can approaches such as heat budget modelling, semi-empirical modelling and statistical analyses appropriately quantify and explain thermal discontinuities?
- 5) How is air temperature, a major explanatory climatic variable, related to stream temperature along a river course? Are statistical models (i.e., linear and logistic regressions) more efficient than a semi-empirical model (*air2stream*; Toffolon and Piccolroaz, 2015) in capturing air-stream temperature relationships?

2. MATERIAL AND METHODS

2.1 Study area

The River Spree is a sixth-order lowland river (catchment area: 10,100 km²), located in the Elbe catchment in north-eastern Germany. It originates at 390 m above sea level (asl) in the Lusatian Mountains near the Czech border. Along its 380 km, the River Spree traverses several shallow lakes and man-made reservoirs before entering the River Havel, a main tributary of the Elbe River, at 30 m asl in Berlin. For this study, the ~200 km long lower course of the River Spree, between Leipe (Brandenburg) and Spandau (Berlin), was sampled (Fig. 1). The lower course of the river flows through the Glogów-Baruth glacial valley. Here, the river changes its direction several times, as it follows glacial valleys or is guided by the arrangement of sandurs and glacial ground moraines. The average slope ranges between 0.001 and 0.13% (Kozerski *et al.*, 1991). In 2014, mean annual discharge was 4 m³ s⁻¹ at Fehrow and 23 m³ s⁻¹ at Spandau. Between Cottbus and Berlin, the specific runoff ranged from 2.4 to 4.1 L km⁻² s⁻¹ (1997-2007; Pusch *et al.*, 2009). The seasonal flow regime is regulated and dampened by the presence of reservoirs (upstream of the study area) and managed lake outlets (Kozerski *et al.*, 1991).

The lower Spree catchment exhibits a sub-continental climate, with cold winters and hot and dry summers. The average annual air temperature at Lindenberg, located in the center of the lower catchment, was 9.2°C (1981-2010; winter = 0.4°C, summer = 18°C). It is one of the driest regions in Germany (average annual precipitation at Lindenberg: 480 mm; 1981-2010). Upstream of Berlin, the lower Spree catchment is covered by forests (41.5%), cropland (43.4%), settlements (4.6%), and surface waters (2.2%) (Pusch *et al.*, 2009).

The lowland Spree is intensively managed for drinking water supply, recreation, cooling of power plants, as a receiver of tertiary-treated wastewater and a waterway for navigation. At the same time, the River Spree has undergone severe transformations due to open-cast lignite mining in the past, making it one of the most intensively managed rivers globally (Pusch *et al.*, 2009).

2.2 Dataset

From 1 January 2014 to 31 December 2014, stream temperature (ST) was recorded at 15 min intervals at 20 locations along the lowland course of the River Spree (Fig. 1). The ST was recorded using Gemini TinyTagPlus data loggers (model TG-4100) with an internal encapsulated thermistor. The stated precision of the loggers is $\pm 0.2^{\circ}\text{C}$. The loggers were cross-calibrated prior to installation. Temperature differences among loggers were $\pm 0.1^{\circ}\text{C}$. Due to dewatering events and delays in data downloading, only 13 out of the 20 loggers had data available for the entire year. Therefore, for correlation and regression analyses, the data until 15 September 2014 (i.e., data available for all sites) were considered, whereas the whole data set was used for model applications. As we did not have observational data for the complete year, proper segregation of data into four seasons was not possible. Hence, the winter and spring months were taken broadly as winter (Jan-May), while the summer and autumn months were considered as summer (Jun-Sep).

Hourly data for climatological variables including air temperature and relative humidity (five stations), wind velocity, atmospheric pressure, cloud cover and shortwave radiation (one station) were downloaded from the Deutsche Wetter Dienst (DWD, www.dwd.de) for the relevant period. The daily air temperature in the study region ranged from -11.4 to 27.6°C , a representative year in terms of air temperature between 2004 and 2014 (Fig. S1). The data of the five meteorological stations were averaged for each time step to obtain air temperature and relative humidity data for the entire region. This was done primarily to ensure same climatic forcing on the river course such that the land-use induced differences in the climate, and thereby ST, were captured by the model terms and also to eliminate the influence of the distance between the station and the river. Daily discharge data (six stations, Fig. 1) were obtained from the Landesamt für Umwelt, Gesundheit und Verbraucherschutz (LUGV; www.luis.brandenburg.de/).

A total of 14 relevant landscape variables were included in the analyses: Shares (%) of land use types for different riparian buffer strip widths, river network distance of sites from the closest lake (lake distance), and stream azimuth (Table 1; Fig. 1, Fig. S2). Land use data were obtained from the ATKIS land use dataset (resolution: 10 m × 10 m; ADV, Germany). Lake distances and stream azimuth values were calculated from Google Earth. Azimuth was measured as the clockwise angle (in degrees) that the longitudinal dimension of the river reach differed from due south (e.g., from the south = 0°, west = +90°, east = -90°) (Arscott *et al.*, 2001). Since the elevation (30-58 m) and river width (18-50 m, except in the last stretch) varied little along the studied river course, these variables were not considered in present analyses.

2.3 Quantification of landscape contributions to thermal heterogeneity, the air-water temperature relationship and dominant thermal processes

This section elaborates on the models used to quantify the thermal heterogeneity. A combination of physically based models (heat-budget model, Lagrangian model), semi-empirical (*air2stream*) and statistical models (regression, correlations) were used to quantify the thermal discontinuities and the responsible factors. The heat budget, semi-empirical and statistical models were applied for each river reach, which were defined by the ST measuring site locations. The Lagrangian model was specifically used to identify the dominant thermal processes along a particular section (Section II, S6-S9) of the river.

2.3.1 Physically based models

2.3.1.1 Heat budget model (HB)

Heat content variations in a river reach was computed using the following energy balance:

$$\frac{d}{dt}(\rho C_p V T_w) = H_{up} - H_{down} + S(E_{atm} + E_r + \Delta E) \quad (1)$$

where T_w is the ST, ρ is the density (assumed constant, 997 kg m^{-3}), C_p is the specific heat of water (assumed constant, $4179 \text{ J kg}^{-1} \text{ }^\circ\text{C}^{-1}$), V is the reach volume (m^3), S is the surface area (m^2), H_{up} is the total heat flux (W) entering the upstream portion of a reach, H_{down} is the total heat flux (W) exiting downstream, and E_{atm} is the net atmospheric exchange per unit surface (W m^{-2}). The various heat flux components of E_{atm} (solar radiation, sensible and latent heat flux, evaporation, condensation, etc.) were calculated using the relationships reported in Martin & McCutcheon (1998) (see Appendix I). All the coefficients that are independent of ST were estimated as an average value for the whole study area. The value ΔE is a correction factor (W m^{-2}) accounting for global uncertainties in the determination of E_{atm} . It was essentially the difference in the net atmospheric exchange values estimated as a function of the rate of change in ST (left hand side term in equation (1) divided by S) and via empirical heat budget equations (equation (1) in Appendix I), using spatially averaged ST (mean across all sites at daily time step) as input. Finally, E_r , the remaining energy flux term (W m^{-2}), was expected to be a contribution of unresolved non-atmospheric sources not included in H_{up} such as land use-based sources (wastewater, urban outflows), inflows from lakes, tributaries and groundwater. It was calculated referring to each reach rescaled by the surface area S and is site-specific. Since the solar radiation values were region-based and not site-specific, effects of incident solar radiation in shaded areas (reduced heat inputs as compared to open areas) are also included in E_r .

Equation (1) was applied to each computational river reach which had a discrete ST, $T_{w,i}^k$ ($^\circ\text{C}$, with i the index for space and k for time) in the volume V_i . Assuming steady hydraulic conditions (i.e., constant discharge, Q ($\text{m}^3 \text{ s}^{-1}$), and cross-section) and complete mixing along a computational reach i (downstream temperature $T_{w,down} \cong T_{w,i}^k$), the upstream and

downstream heat fluxes were calculated as $H_{up} = \rho C_p Q_i T_{w,i-1}$ and $H_{down} = \rho C_p Q_i T_{w,i}$, respectively. Thus, the heat budget equation (1) was discretized as

$$\frac{T_{w,i}^{k+1} - T_{w,i}^k}{\Delta t} = \frac{Q_i}{V_i} (T_{w,i-1}^k - T_{w,i}^k) + S_i \frac{E_{atm} + \Delta E}{\rho C_p V_i} + S_i \frac{E_{r,i}}{\rho C_p V_i}. \quad (2)$$

The volume was estimated as $V_i = B_i D_i L_i$, where B_i is the river width (m), D_i is the average depth (m) and L_i the length (m) of the reach (values based on limited cross-section data). All the surface heat fluxes were calculated referring to a surface area $S_i = B_i L_i$. Assuming that the ST changes across space and time are known, equation (2) yields a way to estimate the residual heat term,

$$E_{r,i} = \rho C_p D_i \left(\frac{T_{w,i}^{k+1} - T_{w,i}^k}{\Delta t} \right) - \rho C_p \frac{Q_i}{B_i L_i} (T_{w,i-1}^k - T_{w,i}^k) - E_{atm} - \Delta E. \quad (3)$$

Some assumptions were used to derive a meaningful interpretation of the residual term E_r ($W m^{-2}$). Groundwater-related spatial differences in ST were assumed to be negligible because water conductivity, an indicator of groundwater inflow (Johnson and Wilby, 2015), was similar at most of the sites (Table 2). Tributary contributions were not considered as discharge data on small streams/canals flowing into River Spree were not available and no major tributary confluences exist along the study reach (except River Dahme, which joins River Spree in its final reach). Ultimately, E_r was assumed to mainly consist of heat contributions from land use sources and lake outflows within the reach.

For this analysis, since the discharge information was available at only six stations, the information from the station closest to each reach was used (Fig. 1, Table S1). The calculations were performed using daily averaged values of ST and hydro-climatological variables.

2.3.1.2 Lagrangian model

To understand how upstream conditions, particularly presence of lakes, influence downstream ST, we developed and applied a simple Lagrangian model (e.g., Leach and Moore, 2011) to a single section within the study area. For this exercise, the ST was simulated at the downstream site (S9) of the river section bounded by sites S6 and S9, as the upstream site S6 is located at a lake outlet. This particular river section was chosen because it was the only section where the heat inputs were solely due to one heat source (a lake and not also an urban area). The simulation was performed for a period of 27 days in July (5/07-31/07), the hottest period of the year, when the entire study area, including the lake, receives the maximum amount of heat via solar radiation.

The Lagrangian model (LAGR) is based on the heat budget approach described in the section 2.3.1.1. The reach was divided into a series of sub-reaches bounded by nodes (index j), and a water parcel having an initial ST (based on measured values) was released from the upstream boundary at each time step. As the water parcel flows downstream from one node to the next (j to $j + 1$), the model computed the heat inputs and the consequent change in ST over the stream sub-reach. This is represented as follows:

$$T_w(x_{j+1}, t_{k+1}) = T_w(x_j, t_k) + (\rho C_p D_j)^{-1} \sum E_l \Delta t, \quad (4)$$

where $\sum E_l = E_{atm} + E_r + \Delta E$ represents the sum of all the external heat fluxes acting in the time interval $\Delta t = t_{k+1} - t_k$ (15 min) on the water parcel that is transported from x_j to $x_{j+1} = x_j + U_j \Delta t$.

In our simulation, the flow velocity U_j was assumed as constant in each sub-reach L_i . For this analysis, reference values of flow velocity $U = 0.2$ m/s and depth $D = 1$ m were estimated as a first approximation. For this, uniform flow conditions were assumed in rectangular cross-sections having width $B = 40$ m, as the information on the longitudinal variation of the cross-sections of the reach was insufficient.

In order to highlight the role of advective heat fluxes on ST, we also tested the performance of a version of the Eulerian model based only on local heat exchanges (we term this model as “local” [LOC]), applied at each site i . This model is not physically realistic because it neglects the terms H_{up} and H_{down} in equation (1), but was designed to disentangle the local effect from the advective transport. Thus, equation (2) reads

$$T_w(x_i, t_{k+1}) = T_w(x_i, t_k) + (\rho C_p D_j)^{-1} \sum E_l \Delta t, \quad (5)$$

where the ST changes are driven only by the local atmospheric exchange term $\sum E_l$. The resulting ST values were compared with those obtained from the LAGR model. Additionally, the role of riparian buffer in regulating ST was also determined in the same river section S6-S9. To do this, STs were simulated under a completely shaded scenario (zero incident solar radiation input) and compared with the STs simulated under current conditions (70% solar radiation), using both models (equations 4 and 5). This would give insight on the efficacy of riparian buffering on sections including and excluding the effects of advection.

2.3.2 Hybrid semi-empirical model

Statistical models might not be the best option to describe and predict ST, especially at fine spatial (Arismendi *et al.*, 2014) and time scales (Piccolroaz *et al.*, 2016). With the aim to evaluate models other than statistical models but of similar complexity, an alternative approach was applied to relate ST to air temperature. The *air2stream* model (Toffolon and Piccolroaz, 2015) represents an adaptation (for rivers) of the *air2water* approach that was successfully applied to predict lake surface temperature as a function of air temperature (Piccolroaz *et al.*, 2013, 2015, 2018; Toffolon *et al.*, 2014). It is based on a lumped heat budget approach that considers an unknown volume of the river reach, its tributaries (implicitly considering both surface and subsurface water fluxes), and the heat exchange with the atmosphere. The heat budget equation (simplified from equation 1) only considers air

temperature, taken as a proxy of the other processes (see Toffolon and Piccolroaz, 2015 for further details). As discharge data were not available for all ST sites, the 5-parameter version of the model, which does not need this information, was used for this analysis:

$$\frac{dT_w}{dt} = a_1 + a_2 T_a - a_3 T_w + a_4 \cos \left[2\pi \left(\frac{t}{t_y} - a_5 \right) \right], \quad (6)$$

where T_a is the air temperature ($^{\circ}\text{C}$), t is time (days), t_y is the duration of a year (days) and a_1 to a_5 are constant parameters. The values of these parameters are estimated through calibration, so that neither the geometrical characteristics of the reach (length, volume, area, etc.) nor the roles of specific heat inputs (e.g., along-reach inflows) are explicitly specified. The term $a_2 T_a$ in equation (6) represents the effect of air temperature (i.e., processes associated with exchanges with the atmosphere) on the net heat flux. The last term on the right hand side of equation (6) accounts for the heat fluxes associated with inflows and the contribution of factors (such as groundwater, land use, lakes), which modify ST dynamics but are of difficult determination. Parameter $a_5 \in [0,1]$ is the phase of this additional term (Table S2), which normally peaks in summer, and is calibrated together with the other parameters (Toffolon et al., 2015). Given the short ST record in the present study (January-December 2014; including data gaps), the parameters of equation (6) were calibrated using the entire dataset.

If we divide equation (6) with the coefficient of T_w , a_3 , we obtain

$$C_3 \frac{dT_w}{dt} = C_1 + C_2 T_a - T_w + C_4 \cos \left[2\pi \left(\frac{t}{t_y} - a_5 \right) \right], \quad (7)$$

where $C_3 = 1/a_3$, and $C_n = a_n/a_3$ ($n = 1, 2, 4$). Parameter C_3 is a measure of the time scale for adaptation of ST to local conditions (very small values implies instantaneous adaptation) and values of C_3 shorter than the time scale of the data (daily, in this case) would imply the possibility to obtain the equilibrium temperature at each time step (Toffolon and Piccolroaz,

2015). Parameters C_2 and C_4 are the measures of sensitivity to air temperature and contribution of seasonally varying heat inputs from sources that are not explicitly resolved (e.g., solar radiation, heated effluents from urban systems), respectively.

2.3.3 Statistical models

Mean/maximum ST and mean E_r values at different temporal resolutions (monthly scale and over the entire period time, i.e. nine months) were correlated with land use shares (%), stream azimuth, and lake distances, to determine the role of landscape variables in modifying ST.

Another objective was to compare the efficiency of purely statistical and hybrid models in quantifying air-stream temperature relationship at finer time-scales. For this, linear/logistic regression models and the *air2stream* model were tested using daily air temperature and ST data. The model performances were compared by calculating the Root Mean Square Error (RMSE, °C) and the Nash–Sutcliffe Efficiency index (NSE; Nash and Sutcliffe, 1970). The RMSE provides an estimate of the accuracy of predicted stream temperatures and NSE provides a normalized measure of model performance by weighting the average variability of model residuals with respect to the variability of the target series (Piccolroaz *et al.*, 2016).

3. RESULTS

3.1 Temporal variability and spatial heterogeneity in stream temperature

The daily mean ST of the River Spree (all sites) ranged between 0°C (February) and 27.8°C (July). Spatially, differences in several metrics of ST, such as mean ST over the entire study period (overall mean), daily mean ST, sub-daily ST values, and timings of maximum ST, were observed among sites (Table 2; Fig. 2). The largest spatial difference in daily mean ST (5.1°C) was observed between sites S2 (10.8°C) and S20 (15.9°C) [observed on 5 May 2014]. The highest sub-daily ST were attained at lake outlets (S6, S10) and downstream of urban areas (S14, S18, S19, S20). At most of these sites (namely S6, S14, S19, S20), ST peaked

earlier in the season, compared to all other sites (Table 2, 'Time at maximum ST'), i.e., 0.05 to 2.14 days earlier at sites S6, S14 and S19, and 0.01 to 2.15 days earlier at S20.

Spatial differences in ST were primarily observed at locations upstream and downstream of urban areas and of lakes. The difference in daily mean ST downstream and upstream of urban areas (S14-S13, S20-S16) ranged between -0.8 and 2.1°C in summer and between -0.6 and 2.9°C in winter. The difference in daily mean ST of lake inflow and outflow sites (S5-S6; S9-S10; S16-S18) ranged between 1.3°C and 2.9°C during summer (warmer outflow) and -0.6°C and -1.4°C during winter (colder outflow). As the heat from the lake dissipated along the reach, a downstream cooling trend in ST was observed below lakes in summer (e.g., S6, S10). However, no distinct changes were observed at the sites downstream of lake Müggelsee (i.e., from S18 which is situated at the lake outlet), which were all located in an urban area.

Empirically, the 195 km long river course could be subdivided into four thermal sections (Fig. 1). These sections were created by thermal discontinuities induced by three major lakes and a major urban area located along the river (Table 2). Section I is defined by sites S1-S5 and situated within a mixture of forested and agricultural land with urban areas interspersed in some regions. Section II contains sites S6-S9 and is mainly situated in agricultural areas. Sites S10-S17 constitute section III, which is situated in semi-forested/agricultural areas. Section IV is situated within the city of Berlin and contains sites S18-S20. Within section III, site S17 differed from all other sites, with cooler temperatures between April and July and warmer temperatures during January compared to the other sites in this section.

At a coarse spatial scale, the ST increased downstream in summer, with each section being warmer than the adjacent upstream section. During winter, the ST exhibited a downstream decrease, with minor differences between sections II and III (Fig. 2).

Spatial differences in maximum and minimum ST exhibited a similar pattern as observed for mean ST. The daily temperature range (difference between diel maximum and minimum ST), however, portrayed a different pattern as observed for mean ST (Fig. S3). Along the river course, maximum values of daily ST range were observed primarily at sites S6, S8, S14, and S15.

3.2 Quantification of landscape contributions to thermal heterogeneity, dominant thermal processes and the air-water temperature relationship

3.2.1 Heat-budget approach: spatial variation in E_r

The residual energy flux term E_r denotes heat flux contributions via different land use types and lakes outflows (non-atmospheric sources) within a reach. The mean E_r over the study period was positive (and highest) for sites at lake outlets (namely S6, S10, S18) and/or within urban areas (namely, S14, S18, S19 and S20). Hence, lakes and urban areas function as heat sources (Fig. 3a). Positive daily E_r values were detected for 52 to 63% of the study period (mostly during summer months, June to September) for sites S6, S10, S14, S18, S19, S20 (Fig. 3b, c). Negative daily E_r values, implying cooling effects, were often associated with the presence of forested areas and only occurred in absence of lakes (e.g. sites S2, S4, S7, S11-S13, S15).

3.2.2 Lagrangian model: identifying dominant thermal processes within the study reach

To demonstrate how the upstream conditions impacted ST behaviour at a site, ST was simulated via the LAGR (equation 4) and the LOC (equation 5) models for Section II (Fig. 4). As expected, comparisons between simulated and observed ST at S9 (downstream site in Section II) showed that the LAGR model (RMSE = 0.5°C) performed better than the LOC model (RMSE = 1.9°C), because advective terms were neglected in the latter model. The mean values of the simulated ST from the LAGR model and the LOC model were 23.5°C

(standard error, S.E.= 0.023°C) and 22.0°C (S.E.= 0.021°C), respectively; and the observed mean ST was 23.7°C (S.E. = 0.021°C). Furthermore, these simulations demonstrated that approximately 70% of total solar radiation was incident on the river section (Fig. 4a), as the simulated and observed values fit best at this value.

The second step was to ascertain the influence of riparian shading in moderating ST. Complete riparian shading (solar radiation value set to 0) under the LAGR model scheme resulted in lowering of ST, although not as much as under the LOC model scheme (Fig. 4b). Under the LAGR model scheme, the absolute differences between STs (at 15 min time steps) simulated at S9 under the complete shading scenario and current shading conditions ranged from 0.2 to 3.1°C (mean = 1.5°C; RMSE= 1.6°C). However, the maximum STs from both conditions differed by only 1.2°C (complete shading = 25.3°C, current = 26.5 °C). On the other hand, applying the LOC model scheme, the absolute differences between the STs simulated under the two conditions ranged from 0 to 8.8°C (mean = 5.1°C; RMSE = 5.4°C), while the maximum simulated ST under the complete shading scenario was 1.4°C lower than that under the current condition. These results showed that complete riparian shading was less effective in lowering ST in reaches dominated by advected heat rather than atmospheric fluxes.

3.2.3 Semi-empirical modelling: spatial variation in model parameters

The calibrated parameters of the *air2stream* model were analysed to identify heat sources and sinks governing the thermal response of the river. Despite the relatively long adaptation time C_3 (>1 day: 2.3 [S1] to 6.7 days [S18], see Fig. 5), the ratios defined in equation (7) provided a meaningful interpretation of the dominant processes.

Parameter C_3 , the time required for adaptation of ST to local conditions, increased in the downstream direction along the river course till S18 (Fig. 5). This is likely due to increasing

water volume (thermal inertia) and/or cumulative energy advected from upstream reaches, which can delay water temperature responses to local conditions (Johnson *et al.*, 2014). Parameter C_4 , indicating the contribution of landscape variables to ST dynamics, varied between 2.3 to 5°C. The largest values were estimated for the monitoring sites located in the most downstream urban section of the river (S18-S20, Fig. 5). Parameter C_1 , which incorporates the annual constant flux in the model, varied between 3 and 6.2°C, and the highest values were again estimated for the three downstream sites (S18-S20, Fig. 5). Parameter C_2 , the coefficient associated with air temperature, varied less than the other parameters (0.6 to 0.8), and the lowest value was attained at site S20 (Fig. 5), where the heat fluxes that were not explicitly resolved (proportional to C_4) became dominant.

3.2.4 Statistical approach: correlations with landscape variables

Stream temperature: Significant correlations between ST metrics and landscape variables were detected at various time scales (over the entire study period, at monthly and at daily scales [see Table S3]). Urban area shares in 100-1000 m buffers and in 50-1000 m buffers were significantly and positively correlated with the mean ST over the study period (Table 3) and the monthly mean STs (during May-September, Table 4), respectively. Forest area shares in ≤ 100 m buffers had significant negative correlations with the overall mean ST and the monthly mean STs (Tables 3, 4).

Mean ST was negatively correlated with lake distance during spring and summer months (April-September) and over the entire period, but was positively correlated in January and February (Tables 3, 4). No significant correlations between stream azimuth and ST were detected at the monthly scale and over the entire study period.

Residual heat flux E_r : Urban area shares (all buffer widths) had significant positive correlations with the mean E_r over the entire study period (Table 3) and the monthly mean E_r .

(August and September, Table 5), identifying them as heat sources. Forest shares in 500-1000 m buffers were negatively correlated with the monthly mean E_r , signifying that they reduced heat inputs within the river at a monthly scale (Table 5).

Monthly mean E_r was negatively correlated with lake distance in summer months (June to September), while it was positively correlated in February (Table 5). No significant correlations between E_r and stream azimuth were found.

3.3 Air temperature-stream temperature relationship: semi-empirical versus statistical models

In general, the performances of the air-stream temperature regression models at a daily scale were not satisfactory. Linear regression models showed the poorest performance (RMSE = 2.4 – 3.3°C, NSE = 0.82 – 0.87), with performance decreasing in the downstream direction (Fig. 6). Logistic models performed better than the linear models, given the non-linear (s-shaped) relationship between air temperature and ST. The performance of logistic regression models also decreased downstream (RMSE = 1.6 – 2.4°C, NSE = 0.91 – 0.94). Compared to the regression models, the performance of the *air2stream* model was significantly better (RMSE=0.6 – 0.9°C, NSE = 0.98 – 0.99, Fig. 6; Kruskal-Wallis test, $P < 0.001$).

4. DISCUSSION

4.1 Thermal heterogeneity along the river course and responsible factors

Along the 195 km river course, the mean and maximum ST differed among sites at daily and monthly scales as well as over the entire study period. As a general trend, the river sections warmed in the downstream direction in summer and cooled in the same direction in winter. Conceptually, rivers are expected to warm asymptotically in the downstream direction towards an equilibrium temperature (Cassie, 2006; Fullerton *et al.*, 2015). This downstream increase in ST is mostly because of net cumulative gains in radiant energy in the absence of

major tributaries and groundwater flow (Johnson *et al.*, 2014). However, a recent study in North America observed that rivers exhibited different patterns (linear, parabolic, uniform, complex) in downstream river warming (Fullerton *et al.*, 2015). In the case of River Spree, we hypothesize that the presence of a large reservoir (Spremborg reservoir, Fig. 1) above the studied river course provided a water temperature that was different (lower in warmer and higher in colder months) than the equilibrium water temperature, hence resulting in the asymptotic trend. Furthermore, the addition of heat advected from the upstream reaches due to the presence of urban areas or lakes could also be a plausible reason for the observed trend. Simulations from the Lagrangian model showed that the effect of advected heat, especially along sections below lakes, persisted over distances of up to 20 km, which was the dominant process determining the mean ST.

Based on the observed spatial pattern in daily mean ST, four thermally homogenous river sections were identified in summer months. The results from different modelling approaches (positive residual heat flux term, E_r , and high values of parameter C_4) suggested that the presence of urban areas and lakes were the primary causes of ST differences between the four river sections. Similar results were highlighted by Booth *et al.* (2014), who identified upstream lakes, local urban cover and watershed geology as important ST controls in several lowland North American streams.

Differences of up to 3°C were observed between sites situated before and after urban areas. Cities tend to create urban heat islands, as air and ground surface temperature within cities tend to be higher than in rural surroundings (Pickett *et al.*, 2001). Consequently, water temperature in rivers flowing through heat islands tend to be higher as well (also due to additional heat sources, e.g., from sewage inputs) than those in rural and forested areas (Somers *et al.*, 2013). Several studies have reported similar or much larger differences (up to

8°C) between urban and non-urban areas (Pluhowski, 1970; Somers *et al.*, 2013; Booth *et al.*, 2014).

Pre- and post-lake STs differed by -1 to 3°C in this study, an observation also made in other studies (Pedersen and Sand-Jensen, 2007; Booth *et al.*, 2014). In river sections downstream of lakes, a progressive cooling trend was observed in summer. The diminishing influence of warm initial ST provided by shallow lakes at outlets (in summer) and increasing dominance of other local factors with increasing distance from lakes can create downstream cooling conditions over considerable distances (Mellina *et al.*, 2002; Moore *et al.*, 2005; Booth *et al.*, 2014). Lake outflows flowing through urban areas, however, showed slight warming or little change downstream (in summer), possibly due to additional heat inputs from urban areas or a higher equilibrium temperature in that region, thereby, preventing heat loss.

The variations in the values of ST sensitivity to air temperature (described by the parameter C_2 ; Fig. 5) also demonstrated the influence of landscape variables. Both local controls, such as site characteristics, and non-local controls, such as cumulative influence of the upstream network, quantify the magnitude of sensitivity. In general, ST sensitivity to air temperature increases with increasing river order (i.e. increasing downstream) as a function of accumulated heat via exchange at the air–water interface throughout the stream network (Kelleher *et al.*, 2012). However, this trend was seen only in the first 40 km of the studied river course, after which the sensitivity either remained constant or decreased, again implying the role of other sources. The sensitivity was the highest at lake outlets (S6, S10). Most lakes located in the study area are small, shallow and wide (Table S4), possibly exchanging energy rapidly with ambient air temperature and solar radiation at the surface. Also, water temperatures at lake outlets are probably more influenced by water temperatures at the lakeshore, which are typically shallower. ST sensitivity to air temperature at site S18, which is also below a lake, was not as high as other lake-influenced sites. This is probably because the

lake before S18 (lake Müggelsee) is deeper (max. depth = 8 m) than the other lakes (max. depth = 3 m), thereby supplying cooler and warmer outflows in summer and winter months, respectively.

4.2 Potential influence of discharge on thermal heterogeneity

Discharge is an important variable influencing the thermal regime of rivers. The sensitivity of ST to atmospheric influences is determined by thermal capacity and travel time, which change with flow depth and hence, the ST sensitivity tends to decrease/increase with increasing/decreasing discharge (Pedersen and Sand-Jensen, 2007).

The discharge of River Spree typically ranges from 5 to 20 m³/s (Nützmann *et al.*, 2014; Table S1) and is potentially affected by tributaries, groundwater inflow and has been altered for urban and agricultural use. The spatial and temporal variation in discharge could, therefore, influence thermal heterogeneity along the river course. Although the contribution of discharge was not explicitly considered in the study, thermal heterogeneity via discharge variations due to tributary influence and human use were implicitly considered in the semi-empirical and HB modelling approaches by means of the residual (unresolved) heat flux terms. However, heat inputs via tributaries usually become more significant during low flow conditions, which were not recorded during the study.

Preliminary analyses showed that the influence of discharge on ST at a daily scale was minor to moderate ($R^2 = 0.03$ to 0.55), with minor influence ($R^2 < 0.5$) on ST on most sites (see Table S5). However, it is possible that the discharge influence on ST is more prevalent at shorter time scales (e.g., hourly). Alternatively, poor correlations between discharge and ST could be an artefact of distance between the ST sites and discharge measurement locations, as for most of the ST sites the discharge data used was not from the same location. Discharge and water temperature data for tributaries would be required to ascertain whether heat inputs

or losses from the tributaries could play a significant role in the observed thermal heterogeneity.

Heat inputs or losses via groundwater to the thermal budget of a river may be important too, particularly for small rivers such as headwaters (Kelleher *et al.*, 2012; Johnson *et al.*, 2014). Significant groundwater contributions usually result in higher ST in winter and lower ST in summer. In the case of the River Spree, contribution of groundwater to thermal heterogeneity was considered negligible because of the similar conductivity across most sites. However, groundwater contributions seemed particularly significant at site S17, which had cooler ST in warmer months and warmer ST in cooler months than nearby sites. Additionally, one of the highest adaptation time (parameter C_3 , Fig. 5) and low thermal sensitivity to air temperature (parameter C_2 , Fig. 5) were also observed at this site. These observations suggest a possible significant groundwater inflow at S17, possibly due to close contact of the logger with the river bed, as high groundwater inputs may result in weaker correlations with air temperature (Kelleher *et al.*, 2012; Johnson *et al.*, 2014). As for S9 and S11, despite having the lowest water conductivity of all sites, the ST at these sites did not show any unusual behaviour, probably due to the dominance of advected heat from nearby lakes. However, unusually small lag value at S11 as compared to other sites in the section (parameter C_3 , Fig. 5) might be attributable to dominance of other local factors such as agricultural canal inflows, which have faster adaptation times.

4.3 Influence zones of landscape variables

Urban area shares (all buffer widths, across various time scales) and lake distances (primarily at monthly scale) were consistently related to the spatial pattern in ST and E_r . These results signify that higher ST and heat inputs occur with increasing urban area and proximity to lakes, hence, supporting the model results.

Forest area had a significant but an inconspicuous role in reducing heat inputs and moderating ST along the river course. However, the results concerning the effective width of forest buffer were not consistent. Forest area shares within 50 m buffer and 500-1000 m buffers had a significant influence on ST and E_r , respectively. Hrachowitz *et al.* (2010) also investigated the effectiveness of riparian buffers, demonstrating that site-specific characteristics such as discharge and morphology modify the influence of riparian buffer width on ST. Moreover, the moderating influence of forested areas on ST is less pronounced in larger rivers, where increasing channel width prevents complete river shading and reduces the impact of riparian forest microclimates on the energy budget (Hannah *et al.*, 2008; Hrachowitz *et al.* 2010). However, expansive riparian forests might reduce ST along larger rivers via reducing surface and near-surface soil temperatures in summer and, thereby, affecting the temperature of surface runoff – in addition to lowering ambient air temperature and wind speed (Moore *et al.*, 2005; Hannah *et al.*, 2008). Hence, contiguous riparian forest buffers wider than 1000 m might be more effective for the lowland River Spree, although this assumption requires final validation.

Regarding the efficacy of the longitudinal extent of riparian buffers, previous studies have demonstrated the efficacy of riparian shading in reducing mean and maximum ST (Moore *et al.*, 2005; Malcolm *et al.*, 2008; Roth *et al.*, 2010; Imholt *et al.*, 2013; Garner *et al.*, 2014; Dugdale *et al.*, 2018). For instance, Roth *et al.* (2010) simulated the ST response for a 1.3 km upland reach in Switzerland and found that the maximum ST increased by 0.7°C in a cleared vegetation scenario, while it decreased by 1.2°C when mature riparian forest spanned the entire reach. Garner *et al.* (2014) also observed a maximum instantaneous difference of 2.5°C in a 1 km upland reach in U.K. transitioning from open moorland to a semi-natural forest land use. A combination of reduced rates of heating and advection of cooler water from the upstream moorland catchment were proposed as the underlying processes of this change. On

the other hand, our study showed that even complete shading required a comparatively long distance (20 km) to create an average change of 1.5°C in sub-daily ST in lake-influenced lowland sections. This suggests that in sections downstream of shallow lakes, heat advection is the dominant thermal process in summer (heat source) and moderating ST in such sections would require measures other than riparian buffer plantation in addition to riparian shading.

4.4 Air-stream temperature relationship: beyond regression models

The weak performance of the air-water temperature regression models, especially of linear regressions, at the daily scale raises a question regarding their widespread applicability. In general, air and stream temperature correlations are typically weak at a daily time scale (Mohseni and Stefan, 1999; Erickson and Stefan, 2000). However, applications of regression models at weekly scales yielded similar poor performances (Morrill *et al.*, 2005; Arismendi *et al.*, 2014). Unaccounted first or second order autocorrelation in regression models applied at short-time scales weakens their predictive ability, leading to under- or overestimation of values. Autocorrelations are seldom acknowledged by studies, and accounting for them could improve the performance of these models (Benyahya *et al.*, 2007; Johnson *et al.*, 2014). Semi-empirical models, such as *air2stream* applied in this study, are more efficient as they perform with much better accuracy with the same amount of input data as required by regression models. In addition, they simultaneously preserve the physical basis provided by deterministic models and, hence, are not affected by unaccounted autocorrelation (*air2stream* can be interpreted as a first order autocorrelation model given the presence of the time derivative). In this study, the semi-empirical model was able to capture and highlight the important reach-scale ST controls within the study area. Further applications of this model at a larger spatial scale have revealed similar results (Piccolroaz *et al.*, 2016). As emphasized by Arismendi *et al.*, (2014), while the application of simple regression approaches can be attractive, there is a need to move beyond these regression approaches (Toffolon and Piccolroaz, 2015), especially

for relatively fine time-scale applications (Piccolroaz *et al.*, 2016). Modelling approaches, such as demonstrated in this study, provide a wide scope to do so and encourage development of similar or better tools for characterising and predicting ST.

5. CONCLUSION

Despite the fact that the effect of landscape variables on thermal heterogeneity among river systems has been extensively studied, quantifying and understanding *within-system* thermal heterogeneity remains an ongoing challenge (Webb *et al.*, 2008; Fullerton *et al.*, 2015). This study investigated thermal heterogeneity along the 195 km course of a sixth-order lowland river in NE Germany (River Spree), and the role of landscape variables such as land use and the presence of lakes in defining this heterogeneity. We observed significant thermal discontinuities in summer and identified four distinct thermal sections at daily, monthly and seasonal scales. Consistent results were obtained from the application of heat budget modelling, semi-empirical modelling, and statistical analysis to quantify thermal heterogeneity, and its underlying drivers. We found that the specific location of urban areas (cities) and lakes, rather than the spatial arrangement of various land use types (i.e. forest, agriculture, urban), induced thermal discontinuities, thereby enhancing the heterogeneity along the river course, particularly during summer. The effect of urban areas and lakes was similar across various time scales. The effects of the urban microclimate on ST increased with urban area. Hence, investigating the effects of the so-called ‘urban stream syndrome’ on thermal regimes and patterns in rivers (Somers *et al.*, 2013) is imperative, given the cumulative impacts of ongoing climate change, population growth, urbanisation and anthropogenic activities on river systems. Additionally, near-natural upstream river sections should be preserved to mitigate present and future effects of climate change on the thermal regime of entire river courses. Although planting or preserving riparian buffers is among the most popular management measures to reduce nutrient emissions and to maintain natural

thermal regimes, their effectiveness in regulating water temperature depends on landscape and morphological properties of the river. In the case of lowland River Spree, measures such as plantation or maintenance of contiguous riparian areas would likely be more effective in regulating ST when implemented along with other management options, such as improving the groundwater table recharge, managing the temperature of urban discharges or creating shaded artificial ponds. Furthermore, application of alternative models to statistical regression models at finer time scales is encouraged for modelling ST and forecasting its future trends, both of which are important tools for effective river management.

Acknowledgements

R. Arora was funded by the SMART Joint Doctoral Programme (Science for the Management of Rivers and their Tidal systems; <http://web.unitn.it/en/riverscience>), which is financed by the Erasmus Mundus programme of the European Union. This work is also part of the MARS project (Managing Aquatic ecosystems and water Resources under multiple Stress), funded under the 7th EU Framework Programme (Contract No.: 603378; <http://www.mars-project.eu>). We thank Judith Mahnkopf and Matthias Gadegast for their help during site visits, and Elisa Calamita and Sebastiano Piccolroaz for their support in the simulations using the *air2stream* model. The source code of this model can be freely downloaded from <https://github.com/marcotoffolon/air2stream>. The comments by three anonymous reviewers, which helped to improve the manuscript, are highly appreciated.

REFERENCES

- ADV, 2012. Arbeitsgemeinschaft der Vermessungs-verwaltungen der Länder der Bundesrepublik Deutschland: Erläuterungen zum ATKIS-Objektartenkatalog der Arbeitsgemeinschaft der Vermessungsverwaltungen der Länder der Bundesrepublik Deutschland. Available at: <http://www.adv-online.de/Geotopography/ATKIS/>
- Arismendi, I., Safeeq, M., Dunham, J.B., Johnson, S.L. 2014. Can air temperature be used to project influences of climate change on stream temperature? *Environ. Res. Lett* 9(8), 084015
- Arora, R., Tockner, K., Venohr, M. 2016. Changing river temperatures in Northern Germany: trends and drivers of change. *Hydrol. Process.* 30(17), 3084-3096.
- Arscott, D. B., Tockner, K., Ward, J. V. 2001. Thermal heterogeneity along a braided floodplain river (Tagliamento River, northeastern Italy). *Can J Fish Aquat Sci* 58 (12), 2359–2373.
- Benyahya, L., Caissie, D., St-Hilaire, A., Ouarda, T.B., Bobée, B. 2007. A review of statistical water temperature models. *Can Water Resour J* 32(3), 179-92.
- Booth, D.B., Krasieski, K.A., Rhett Jackson, C.. 2014. Local-scale and watershed-scale determinants of summertime urban stream temperatures. *Hydrol. Process.* 28(4): 2427–2438.

- Broadmeadow, S.B., Jones, J.G., Langford, T.E.L., Shaw, P.J., Nisbet, T.R. 2011. The influence of riparian shade on lowland stream water temperatures in southern England and their viability for brown trout. *River Res. Apps.* 27, 226–237.
- Brown, L.E. and Hannah, D.M., 2008. Spatial heterogeneity of water temperature across an alpine river basin. *Hydrol. Process* 22(7), 954–967.
- Cai, H., Piccolroaz, S., Huang, J., Liu, Z., Liu, F., Toffolon, M. 2018. Quantifying the impact of the Three Gorges Dam on the thermal dynamics of the Yangtze River, *Environ Res Lett*, doi:10.1088/1748-9326/aab9e0.
- Caissie, D. 2006. The thermal regime of rivers: a review. *Freshwater Biol.* 51,1389–1406.
- Chang, H. and Psaris, M., 2013. Local landscape predictors of maximum stream temperature and thermal sensitivity in the Columbia River Basin, USA. *Sci Total Environ* 461, 587–600.
- Dugdale, S.J., Bergeron, N.E., St-Hilaire, A. 2015. Spatial distribution of thermal refuges analyzed in relation to riverscape hydromorphology using airborne thermal infrared imagery. *Remote Sens Environ* 160, 43–55.
- Dugdale, S.J., Malcolm, I. A., Kantola K., Hannah, D.M. 2018. Stream temperature under contrasting riparian forest cover: Understanding thermal dynamics and heat exchange processes. *Sci Total Environ*, 610–611,1375–1389.
- EEA-European Environment Agency, 2008b. Impacts of Europe’s Changing Climate – Indicator-based Assessment. EEA, Copenhagen. EEA Report No. 4/2008, ISSN 1725-9177. https://ec.europa.eu/jrc/sites/default/files/jrc_reference_report_2008_09_climate_change.pdf
- Ellis, L.E., Jones, N.E. 2013. Longitudinal trends in regulated rivers: a review and synthesis within the context of the serial discontinuity concept. *Environmental Reviews* 21(3): 136–148, doi:10.1139/er-2012-0064.
- Environmental Protection Agency (EPA) U.S.. 2008. Chapter 1: Urban heat island basics. In: *Reducing Urban Heat Islands: Compendium of Strategies*. Washington, DC: U.S. Environmental Protection Agency. <https://www.epa.gov/heat-islands/reducing-urban-heat-islands-compendium-strategies>
- Erickson, T.R., Stefan, H.G. 2000. Linear air/water temperature correlations for streams during open water periods. *J hydrol eng* 5(3), 317–321.
- Friberg, N., Christensen, J.B., Olafsson, J.S., Gislason, G.M., Larsen, S.E., Lauridsen, T.L. 2009. Relationship between structure and function in streams contrasting in temperature: possible impacts of climate change on running water ecosystems. *Freshwater Biol.* 54, 2051–2206.
- Fullerton, A.H., Torgersen, C.E., Lawler, J.J., Faux, R.N., Steel, E.A., Beechie, T.J., Ebersole, J.L., Leibowitz, S.G. 2015. Rethinking the longitudinal stream temperature paradigm: region-wide comparison of thermal infrared imagery reveals unexpected complexity of river temperatures. *Hydrol. Process.* 29(22), 4719–4737.
- Fullerton, A.H., Torgersen, C.E., Lawler, J.J., Steel, E. A., Ebersole, J. L., Lee, S. Y. 2018. Longitudinal thermal heterogeneity in rivers and refugia for coldwater species: effects of scale and climate change. *Aquat Sci* 80, 3.
- Garner, G., Malcolm, I.A., Sadler, J.P., Hannah, D.M. 2014. What causes cooling water temperature gradients in a forested stream reach?, *Hydrol Earth Syst Sc* 18, 5361–5376
- Hannah, D.M., Garner, G. 2015. River water temperature in the United Kingdom: changes over the 20th century and possible changes over the 21st century. *Prog Phys Geog* 39 (1), 68–92.
- Hannah, D.M., Malcolm, I.A., Soulsby, C. and Youngson, A.F., 2008. A comparison of forest and moorland stream microclimate, heat exchanges and thermal dynamics. *Hydrol. Process.* 22(7), 919–940
- Hebert, C., Caissie, D., Satish, M.G., El-Jabi, N. 2011. Study of stream temperature dynamics and corresponding heat fluxes within Miramichi River catchments (New Brunswick, Canada). *Hydrol. Process.* 25 (15), 2439–2455

- Hrachowitz, M., Soulsby, C., Imholt, C., Malcolm, I. A., Tetzlaff, D. 2010. Thermal regimes in a large upland salmon river: a simple model to identify the influence of landscape controls and climate change on maximum temperatures. *Hydrol. Process.* 24(23), 3374–3391.
- Imboden, D.M., Wüest, A. 1995. Mixing mechanisms in lakes. In: Lerman A, Imboden D, Gat J (Eds.) *Physics and chemistry of lakes* (pp. 83-138). Springer Berlin Heidelberg.
- Imholt, C., Soulsby, C., Malcolm, I.A., Hrachowitz, M., Gibbins, C.N., Langan, S., Tetzlaff, D. 2013. Influence of scale on thermal characteristics in a large montane river basin. *River Res. Apps.* 29(1), 403–419.
- Isaak, D.J., Wollrab, S., Horan, D., Chandler, G. 2012. Climate change effects on stream and river temperatures across the northwest U.S. from 1980-2009 and implications for salmonid fishes. *Climatic Change* 113, 499–524.
- Isaak, D.J., Rieman, B.E. 2013. Stream isotherm shifts from climate change and implications for distributions of ectothermic organisms. *Glob Change Biol* 19(3), 742-751.
- Johnson, M.F., Wilby, R.L. 2015. Seeing the landscape for the trees: Metrics to guide riparian shademanagement in river catchments. *Water Resour Res* 51, 446
- Johnson, M.F., Wilby, R.L., Toone, J.A. 2014. Inferring air-water temperature relationships from river and catchment properties. *Hydrol. Process.* 28, 2912–2928.
- Kaushal, S.S., Likens, G.E., Jaworski, N.A., Pace, M.L., Ashley, M., Seekell, D., Belt, K.T., Secor, D.H., Wingate, R.L., Sides, A.M. 2010. Rising stream and river temperatures in the United States. *Front Ecol Environ* 8(9), 461–466
- Kelleher, C., Wagener, T., Gooseff, M., McGlynn, B., McGuire, K., Marshall, L. 2012. Investigating controls on the thermal sensitivity of Pennsylvania streams. *Hydrol. Process.* 26(5), 771–785.
- Kozerski, H.P., Köhler, J., Schellenberger, G. 1991. Transport of particulate nutrients and pollutants in the lowland River Spree. In: *Sediment and stream water quality in a changing environment: trends and explanation. Proceedings of a symposium held during the XXth General Assembly of the International Union of Geodesy and Geophysics, Vienna, Austria* (pp. 11-24).
- Leach, J.A., Moore, R.D. 2011. Stream temperature dynamics in two hydrogeomorphically distinct reaches. *Hydrol. Process.* 25: 679–690.
- LeBlanc, R.T., Brown, R.D., FitzGibbon, J.E. 1997. Modeling the Effects of Land Use Change on the Water Temperature in Unregulated Urban Streams. *J Environ Manage* 49 (4), 445–469.
- Li, H., Reynolds, J. 1995. On Definition and Quantification of Heterogeneity. *Oikos* 73(2):280-284
- Malcolm, I.A., Soulsby, C., Hannah, D.M., Bacon, P.J., Youngson, A.F., Tetzlaff, D. 2008. The influence of riparian woodland on stream temperatures: implications for the performance of juvenile salmonids. *Hydrol. Process.* 22, 968–979.
- Markovic, D., Scharfenberger, U., Schmutz, S., Pletterbauer, F., Wolter, C. 2013. Variability and alterations of water temperatures across the Elbe and Danube River Basins. *Climatic Change* 119(2): 375–389.
- Martin, J.L., McCutcheon, S. C. (1998). Chapter 8: Stratification and heat transfer in lakes and reservoirs: In *Hydrodynamics and transport for water quality modeling*. CRC Press, Chicago.
- Mayer, T.D. 2012. Controls of summer stream temperature in the Pacific Northwest. *J Hydrol* 475, 323–335.
- Mellina E, Moore RD, Hinch SG, Macdonald JS, Pearson G. 2002. Stream temperature responses to clearcut logging in British Columbia : the moderating influences of groundwater and headwater lakes. *Can J Fish Aquat Sci* 59: 1886–1900.
- Mohseni, O., Stefan, H.G. 1999. Stream temperature/air temperature relationship: a physical interpretation. *J Hydrol* 218 (3-4), 128–141.
- Monk, W.A., Wilbur, N.M., Curry, R.A., Gagnon, R., Faux, R.N. 2013. Linking landscape variables to coldwater refugia in rivers. *J Environ Manage* 118, 170–176

- Moore, R.D., Spittlehouse, D.L., Story, A. 2005. Riparian microclimate and stream temperature response to forest harvesting: A review. *J Am Water Resour Assoc.* 41(4), 813–834.
- Morrill, J.C., Bales, R.C., Conklin, M.H. 2005. Estimating Stream Temperature from Air Temperature: Implications for Future Water Quality. *J Environ Eng* 131 (1), 139–146.
- Nash, J.E., Sutcliffe, J.V. 1970. River flow forecasting through conceptual models 1. A discussion of principles. *J Hydrol* 10, 282–290.
- Nelson, K.C., Palmer, M.A. 2007. Stream temperature surges under urbanization. *J Am Water Resour Assoc* 43(2), 440–452.
- Nützmann, G., Levers, C., Lewandowski, J. 2014. Coupled groundwater flow and heat transport simulation for estimating transient aquifer–stream exchange at the lowland River Spree (Germany). *Hydrol. Process.* 28 (13): 4078–4090.
- Pedersen, N.L., Sand-Jensen, K. 2007. Temperature in lowland Danish streams: contemporary patterns, empirical models and future scenarios. *Hydrol. Process.* 21: 348–358.
- Piccolroaz, S., Toffolon, M., Majone, B. 2013. A simple lumped model to convert air temperature into surface water temperature in lakes. *Hydrol Earth Syst Sc* 17: 3323–3338.
- Piccolroaz, S., Toffolon, M., Majone, B. 2015. The role of stratification on lakes’ thermal response: The case of Lake Superior. *Water Resour Res* 51, 7878–7894.
- Piccolroaz, S., Calamita, E., Majone, B., Gallice, A., Siviglia, A., Toffolon, M. 2016. Prediction of river water temperature: a comparison between a new family of hybrid models and statistical approaches. *Hydrol. Process.* 30(21): 3901–3917.
- Piccolroaz, S., Healey, N.C., Lenters, J.D., Schladow, S.G., Hook, S.J., Sahoo, G.B., Toffolon, M. 2018. On the predictability of lake surface temperature using air temperature in a changing climate: A case study for Lake Tahoe (U.S.A.). *Limnol. Oceanogr.* 63(1): 243–261.
- Pickett, S.T., Cadenasso, M.L., Grove, J.M., Nilon, C.H., Pouyat, R.V., Zipperer, W.C., Costanza, R. 2008. Urban ecological systems: linking terrestrial ecological, physical, and socioeconomic components of metropolitan areas. In: *Urban Ecology* (pp. 99–122). Springer US.
- Pluhowski, E.J. 1970. Urbanization and its effect on the temperature of streams on Long Island, New York. *US Geological Survey Professional Paper* 627-D.
- Poole, G.C., Berman, C.H. 2001. An ecological perspective on in-stream temperature: natural heat dynamics and mechanisms of human-caused thermal degradation. *Environ Manage* 27: 787–802.
- Pusch, M., Behrendt, H., Gancarczyk, A., Kronvang, B., Sandin, L., Stendera, S., Wolter, C., Andersen, H.E., Fischer, H., Hoffmann, C.C., Nowacki, F. 2009. Chapter 14: Rivers of the central European highlands and plains. In: *Tockner K, Uehlinger U, Robinson CT (Eds.) Rivers of Europe*. Academic Press, ISBN-13:978-0-12-369449-2
- Rice, K.C., Jastram, J.D. 2015. Rising air and stream-water temperatures in Chesapeake Bay region, USA. *Climatic Change* 128: 127–138.
- Roth, T.R., Westhoff, M.C., Huwald, H., Huff, J.A., Rubin, J.F., Barrenetxea, G., Vetterli, G., Parriaux, A., Selker, J.S., Parlange, M.B. 2010. Stream temperature response to three riparian planting scenarios by use of a distributed temperature validated model. *Environ. Sci. Technology* 44: 2072–2078
- Somers, K.A., Bernhardt, E.S., Grace, J.B., Hassett, B.A., Sudduth, E.B., Wang, S., Urban, D.L. 2013. Streams in the urban heat island: spatial and temporal variability in temperature. *Freshw Sci* 32(1), 309–326.
- Sun, N., Yearsley, J., Voisin, N. and Lettenmaier, D.P., 2015. A spatially distributed model for the assessment of land use impacts on stream temperature in small urban watersheds. *Hydrol. Process.* 29(10), 2331–2345.
- Toffolon, M., Piccolroaz, S. 2015. A hybrid model for river water temperature as a function of air temperature and discharge. *Environ Res Lett* 10(11), 114011.

Toffolon, M., Piccolroaz, S., Majone, B., Soja, A.M., Peeters, F., Schmid, M., Wüest, A. 2014. Prediction of surface temperature in lakes with different morphology using air temperature. *Limnol Oceanogr* 59(6), 2182-2202.

van Vliet, M.T., Franssen, W.H., Yearsley, J.R., Ludwig, F., Haddeland, I., Lettenmaier, D.P., Kabat, P. 2013. Global river discharge and water temperature under climate change. *Global Environ Chang* 23(2): 450-464.

van Vliet, M.T.H., Ludwig, F., Zwolsman, J.J.G., Weedon, G.P., Kabat, P. 2011. Global river temperatures and sensitivity to atmospheric warming and changes in river flow. *Water Resour Res* 47, W02544.

Vannote, R.L., G.W. Minshall, K.W. Cummins, J.R. Sedell, and C.E. Cushing, 1980. The River Continuum Concept. *Can J Fish Aquat Sci* 37(1):130-137.

Webb, B.W., Hannah, D.M., Moore, R.D., Brown, L.E., Nobilis, F. 2008. Recent advances in stream and river temperature research. *Hydrol. Process.* 22, 902-918.

Webb, B.W. 1996. Trends in stream and river temperature. *Hydrol. Process.* 10(1), 205-226

APPENDIX I: Heat Fluxes

The net thermal energy (E_{atm} , W m⁻²) exchanged through the surface of a water body can be expressed as:

$$E_{atm} = E_s + E_h - E_b - E_e - E_c , \quad (1)$$

where E_s is the shortwave radiation absorbed, E_h the atmospheric longwave back radiation, E_b the back radiation from water surface, E_e the heat loss due to evaporation, E_c the net heat flux due to sensible heat transfer.

The following relationships were derived from Martin & McCutcheon (1998), where not otherwise specified. Typical values adopted in the analysis are reported within parentheses.

E_s was calculated as (Imboden and Wüest, 1995):

$$E_s = (1 - r) H_s (1 - 0.65 C^2) , \quad (2)$$

where $r = 0.2$, H_s is clear sky solar radiation (W m⁻²), and C is cloud fraction (-).

E_h was calculated as:

$$E_h = \alpha 0.97 \sigma (T_a + 273.16)^6 (1 + 0.17C) , \quad (3)$$

where α is a proportionality constant (0.937×10^{-5}), σ is the Stefan-Boltzmann constant (5.67×10^{-8} W m⁻² K⁻⁴) and T_a is the air temperature (°C).

E_b was calculated as:

$$E_b = 0.97 \sigma (T_w + 273.16)^4 , \quad (4)$$

where T_w is the water temperature ($^{\circ}\text{C}$).

E_e was calculated as:

$$E_e = \rho L_w E , \quad (5)$$

where

$$E = (a + b W)(e_s - e_a)E_s = (1 - r) H_s (1 - 0.65 C^2) , \quad (6)$$

$$e_s = 2.171 \times 10^8 e^{(-4157/T_w + 239.09)} , \quad (7)$$

$$e_a = 2.171 \times 10^8 e^{(-4157/T_d + 239.09)} , \quad (8)$$

$$T_d = T_a - (100 - rh)/5 , \quad (9)$$

Here, a ($1 \times 10^{-10} \text{ mbar}^{-1} \text{ m s}^{-1}$) and b ($1 \times 10^{-9} \text{ mbar}^{-1}$) are wind coefficients, W is the wind speed (m s^{-1}), E is the rate of evaporation (m s^{-1}), e_s is the saturated vapour pressure at the water surface temperature (mbar), e_a is the vapour pressure at the air temperature (mbar), L_w is the latent heat of evaporation ($2.4 \times 10^6 \text{ J kg}^{-1}$), ρ is the density of water (997 kg m^{-3}), T_d is the dew point temperature ($^{\circ}\text{C}$), and rh is the relative humidity (%).

E_c can be calculated as:

$$E_c = \rho L_w (a + b W) C_b (P_a/P) (T_w - T_a) , \quad (10)$$

where C_b is the Bowen's ratio ($0.61 \text{ mbar } ^{\circ}\text{C}^{-1}$), P_a is the atmospheric pressure (mbar), and P is the reference pressure at mean sea level (1005 mbar).

Figure 1. Location of the study area, stream temperature (ST) measuring locations, and thermally homogeneous sections (identified by different colours) along the main stem of the River Spree. Stream temperature measuring locations are numbered corresponding to their IDs (Table 2). (Note: white regions in the main map mostly constitute of agricultural lands)

Figure 2. Thermal heterogeneity in the study reach shown by plotting daily means for three random days in a month [4th (circular points), 10th (triangular points) and 15th (squared points)], plotted for the 20 sites on River Spree for all months during the study period. Vertical dashed lines indicate the section-wise subdivision (Table 2).

Figure 3. Boxplots showing E_r values estimated via the heat budget model for the entire study period (a), for the summer months (b; June-Sep) and for the winter months (c; Jan-May) at all reaches on River Spree. Mean values are represented by the central blue points. Boxes around the median line show the 25th and 75th percentiles with whiskers representing the 5th and 95th percentiles and each cross representing the upper and lower outliers.

Figure 4. Simulations of ST at site S9 (downstream) using ST at S6 as input under the Lagrangian (dotted line; LAGR) and “local” Eulerian (LOC) framework (dashed line). The simulation was done for two solar radiation conditions: best fit (~70%; a) and null (0%; b), signifying actual and complete riparian shading, respectively. The solid line denotes the observed ST values at site S9.

Figure 5. Spatial variation of the *air2stream* parameters across the study reach. Plots show the ratios of the main model parameters to a_3 (C_1 , C_2 , C_3 , C_4 ; see equation 7). Vertical dashed lines indicate the section-wise subdivision of the river course.

Figure 6. Root Mean Square Errors (RMSE) and Nash-Sutcliffe Efficiency index (NSE) for the three models (linear and logistic regressions, *air2stream*; applied at a daily scale) for all sites on River Spree.

Figure 1

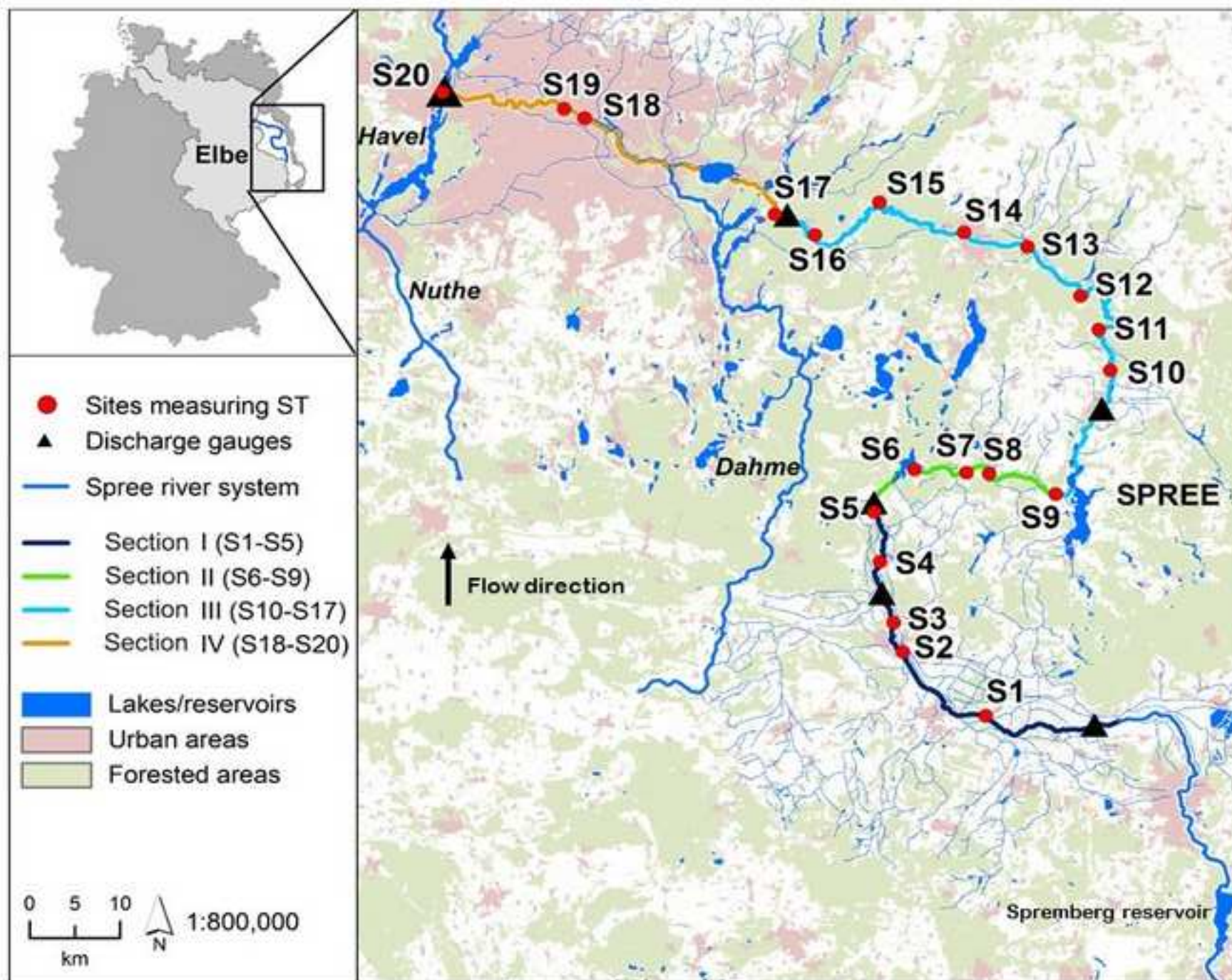


Figure 2

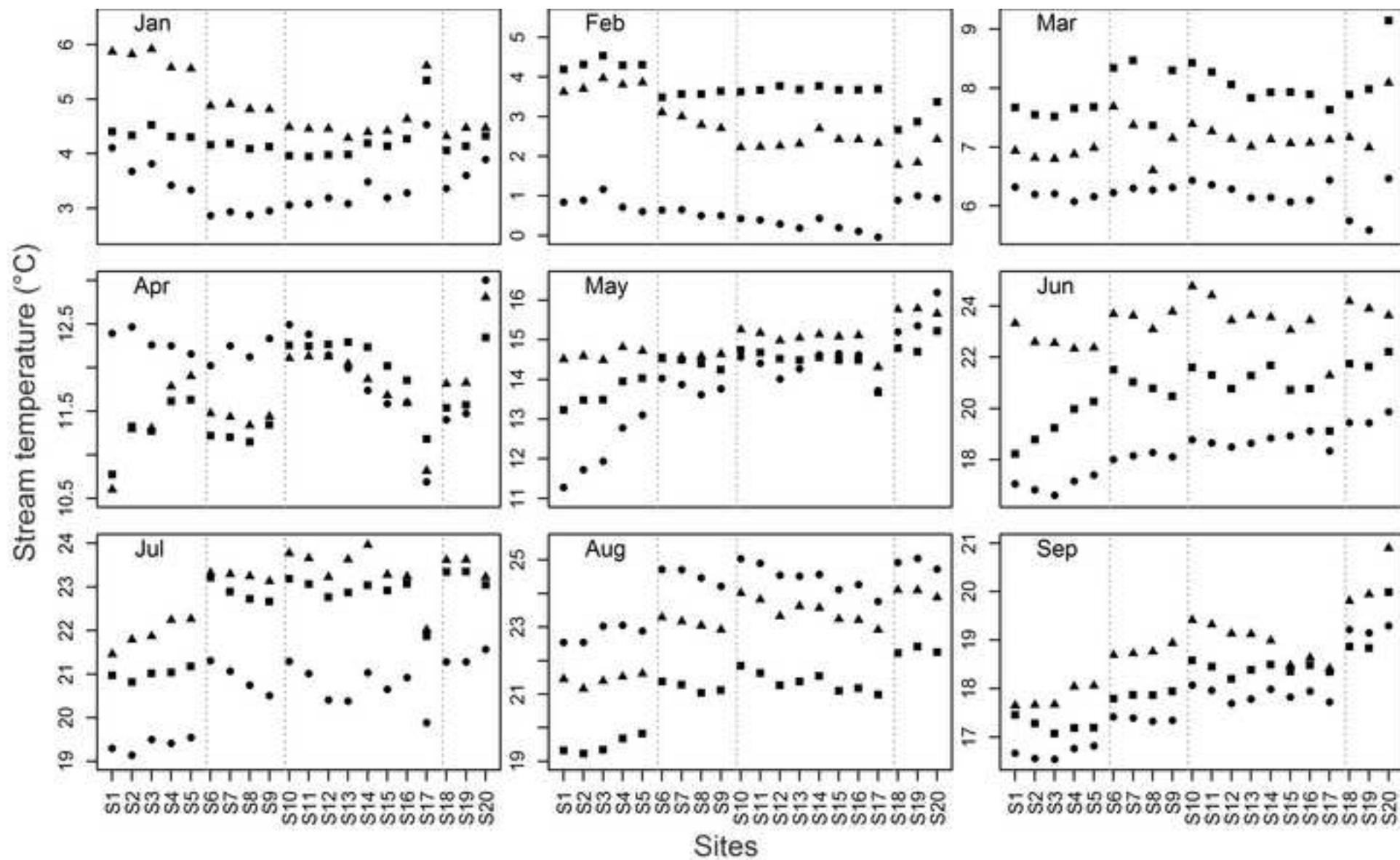


Figure 3

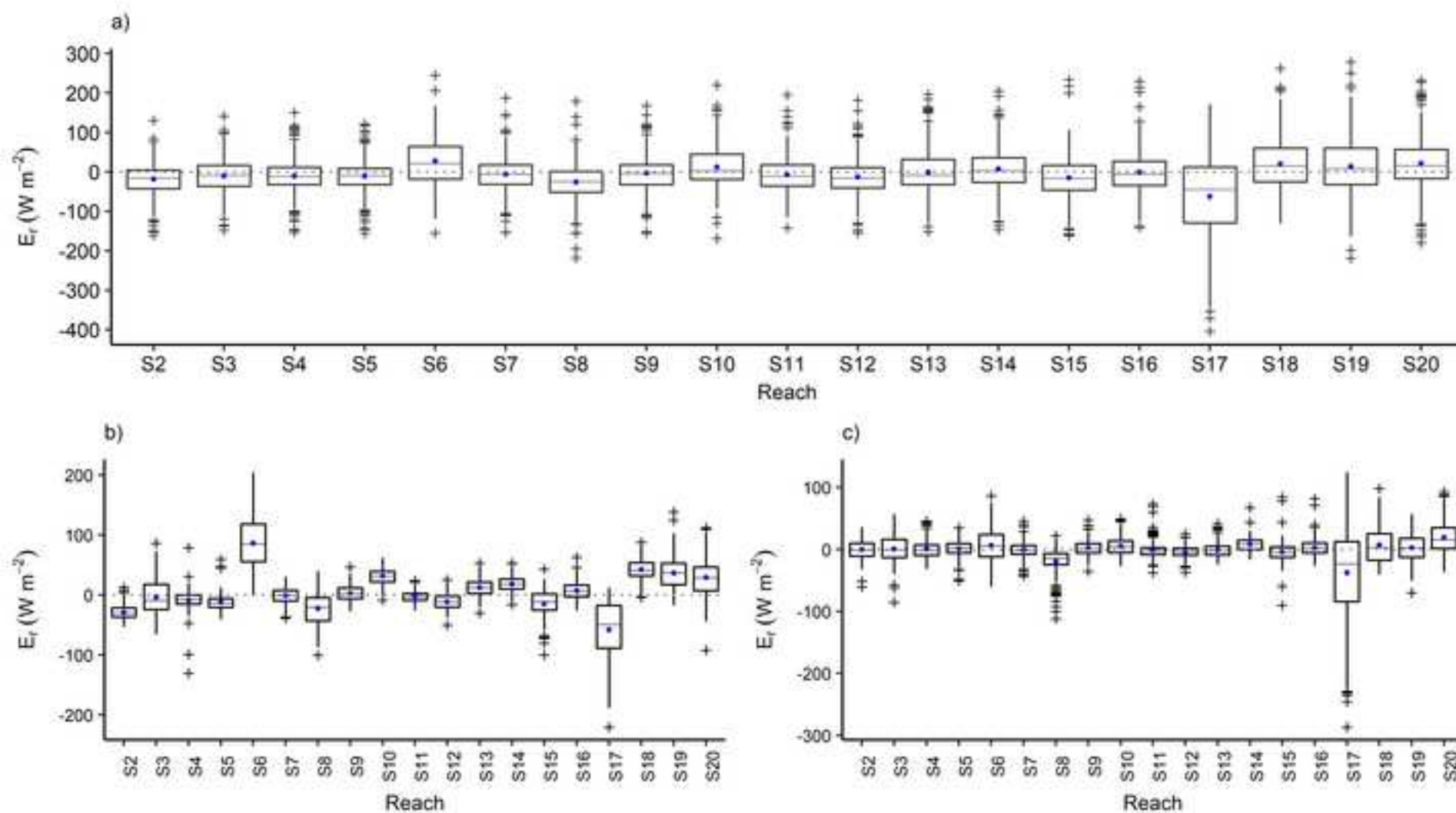


Figure 4

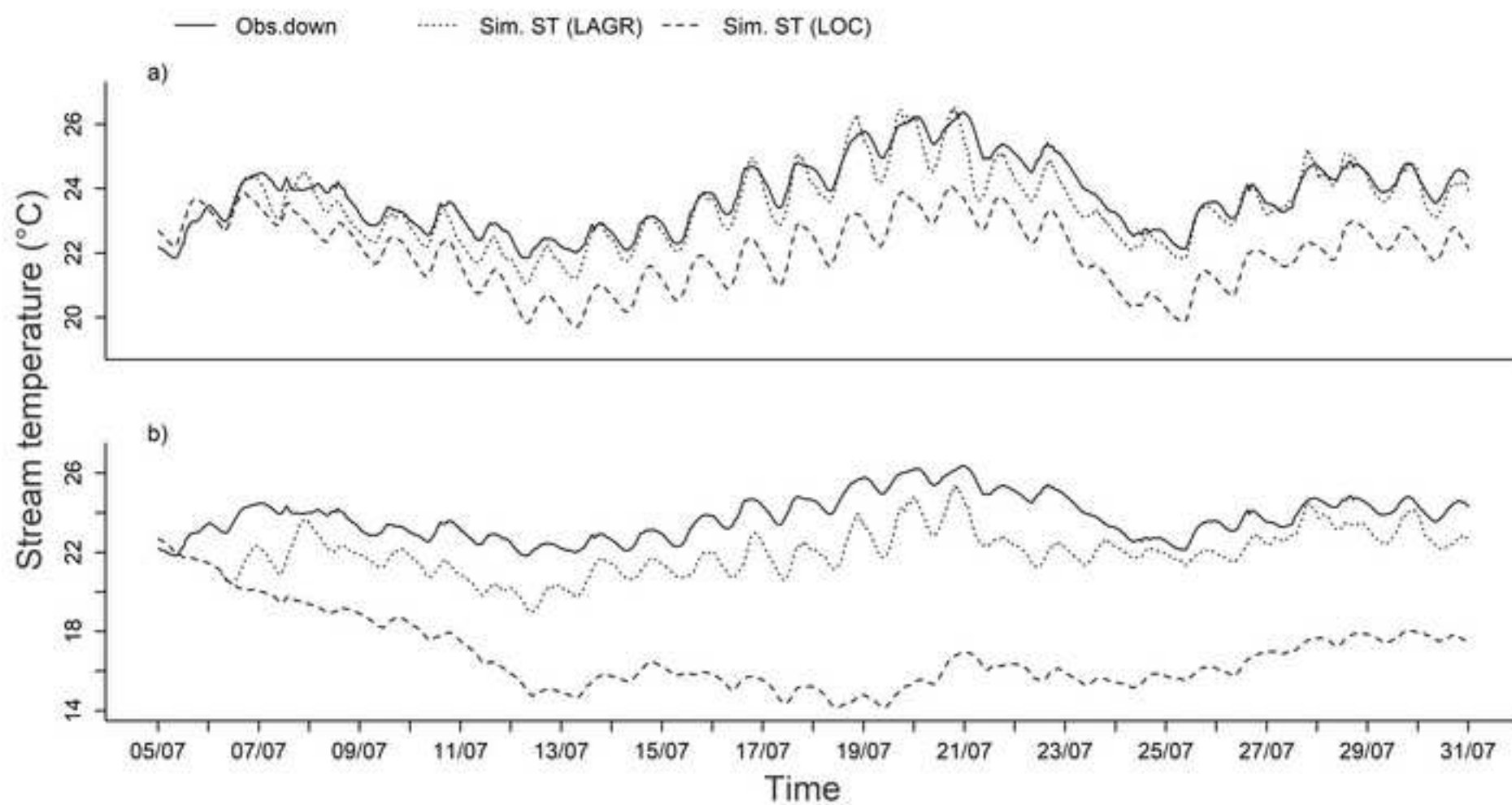


Figure 5

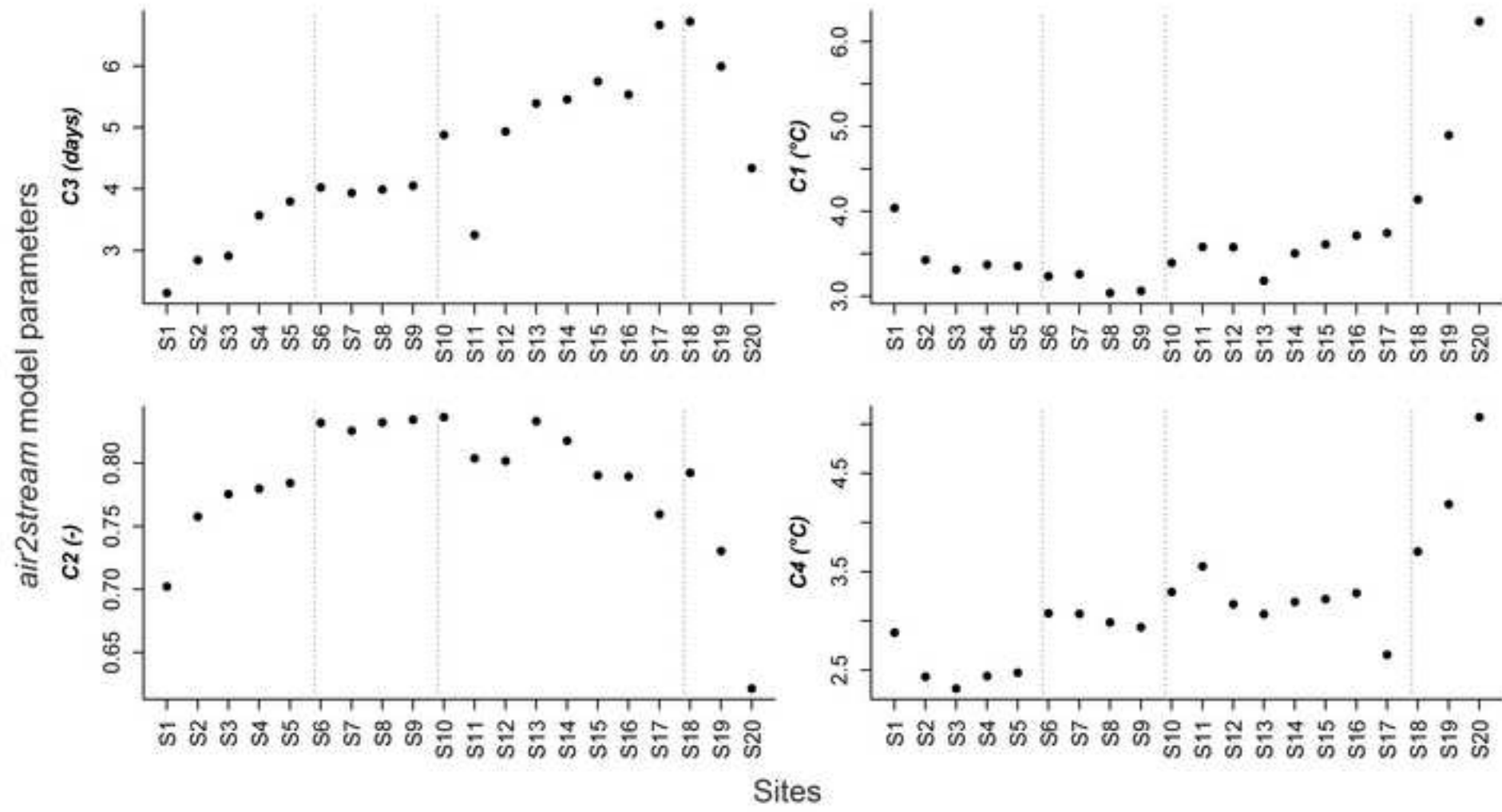
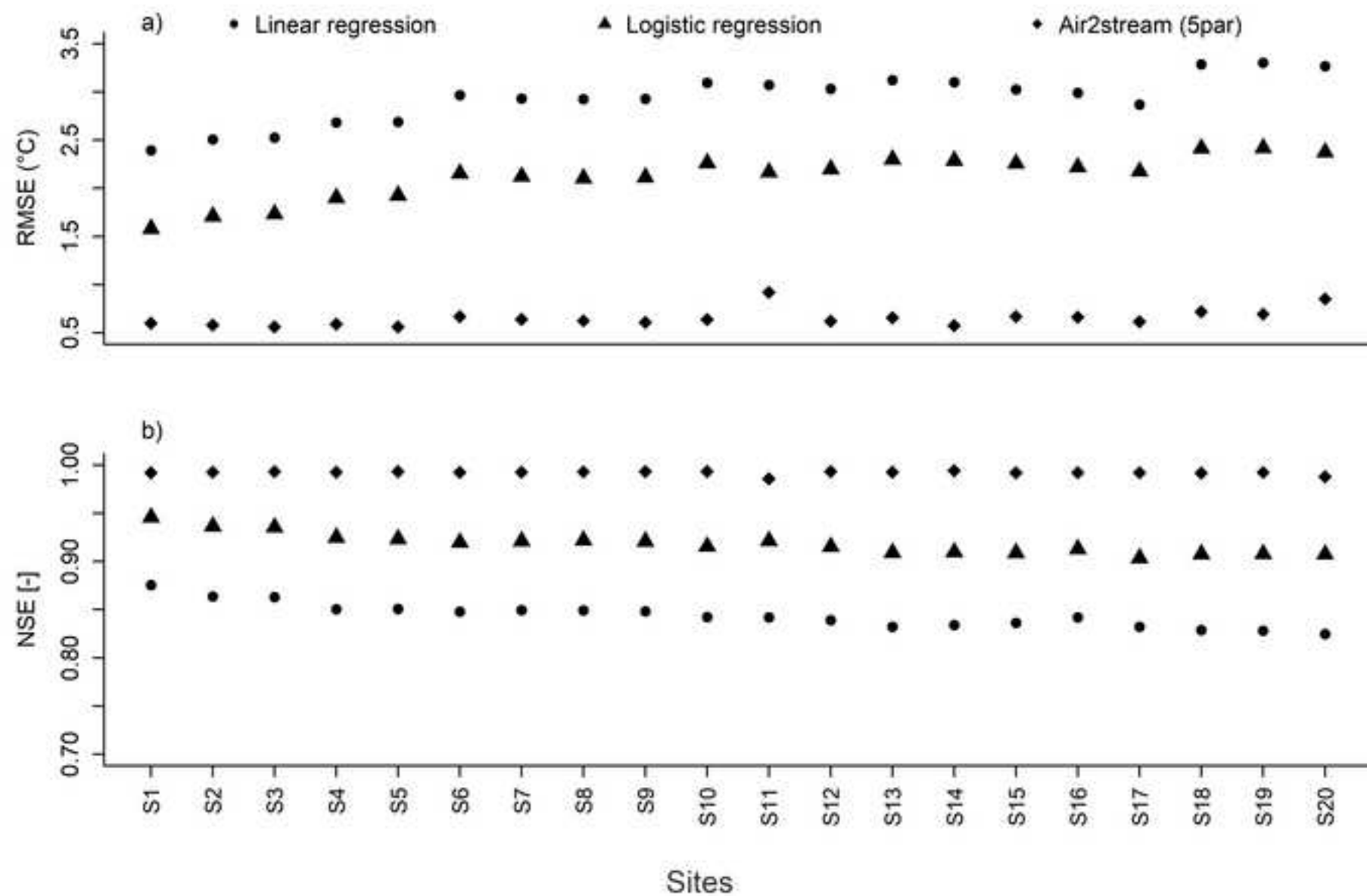


Figure 6



TABLES

Table 1. Hydro-climatological and landscape variables considered in the analysis.

Hydro-climatological variables	Landscape variables
Air temperature [$^{\circ}\text{C}$]	Forest area ($F_{_}$) in 50 m, 100 m, 500 m, 1000 m buffers (%)
Solar radiation [J cm^{-2}]	Agricultural area ($A_{_}$) in 50 m, 100 m, 500 m, 1000 m buffers (%)
Relative humidity [%]	Urban area ($U_{_}$) in 50 m, 100 m, 500 m, 1000 m buffers (%)
Wind velocity [m s^{-1}]	Lake distance [m]
Atmospheric pressure [mbar]	Stream azimuth [$^{\circ}$]
Cloud cover [okta]	
Discharge [m s^{-3}]	

4 **Table 2.** Description of the stream temperature observation sites on River Spree. Three major lakes and a major urban area along the river identify
 5 four thermal sections.

Thermally different sections	Site ID	Name	Distance (km)	Mean ST for entire period	Maximum ST (sub-daily; 15 min)	Time at maximum ST	Forest Area (% of total in the reach; 50 m wide buffer)	Urban Area (% of total in the reach; 50 m wide buffer)	Distance from the closest lake (km)	Conductivity ($\mu\text{S cm}^{-1}$; based on daily mean value on 14 Jan 2008)
Section I	S1	Leipe	0	13.04	24.25	21-07 17:15	30	16	51	947
	S2	Lubben	14	13.06	24.87	21-07 17:30	62	17	65	857
	S3	Hartmannsdorf	18	13.14	25.26	21-07 17:00	32	50	69	822
	S4	Schlepzig	27	13.25	25.30	22-07 18:00	92	2	78	NA
	S5	Leibsch	33	13.32	25.26	22-07 18:15	33	5	84	815
Neuendorfer See (surface: 3.3 km ² ; max depth: 4.5 m)										
Section II	S6	Altschadow	42	13.95	27.78	20-07 15:00	13	10	0.5	893
	S7	Werder	49	13.90	26.83	21-07 02:15	19	1	8	NA
	S8	Kosenblatt	52	13.73	27.08	21-07 15:00	23	6	11	NA
	S9	Trebatsch	62	13.77	26.37	21-07 23:15	22	7	21	0.88
Glower See (surface: 1.2 km ² ; max depth: 3.6 m)										
Section III	S10	Radinkendorf	81	14.13	26.88	21-07 16:15	41	13	2	823
	S11	Rassmansdorf	87	14.03	26.41	21-07 16:30	25	2	8	0.84
	S12	Drahendorf	99	13.80	25.77	20-07 16:15	35	3	10	837
	S13	Berkenbrücke	108	13.84	26.59	22-07 11:30	52	5	19	NA
	S14	Furstenwalde	116	13.97	26.79	20-07 15:00	35	65	27	836
	S15	Hangelsberg	129	13.73	26.34	22-07 13:15	38	7	40	NA
	S16	Freienbrink	141	13.81	26.42	20-07 19:00	21	3	52	NA
	S17	Neu zittau	148	13.24	24.79	20-07 18:00	15	9	59	832
Müggelsee (surface: 7.7 km ² ; max depth: 8 m); enters Berlin city										
Section IV	S18	Warschauer str	176	14.14	26.59	20-07 18:00	33	53	16	NA
	S19	Jannowitz	179	14.18	26.63	20-07 15:00	0	100	19	824
	S20	Spandau	195	14.52	26.61	20-07 14:45	7	93	35	835

6 **Table 3.** Pearson's coefficients for significant correlations of mean stream temperature (for the entire period), mean E_r (for the entire period) with
 7 landscape variables (LV). "Not significant" ($p > 0.05$) correlations are not shown and are denoted by NS. p -values for significant correlations are
 8 provided within the brackets.

LV	ST	E_r
Forest area_in 50 m buffer (F_50)	-0.52 (0.02)	NS
F_100	-0.49 (0.03)	NS
F_500	NS	NS
F_1000	NS	NS
Agricultural area_in 50 m buffer (A_50)	NS	NS
A_100	NS	NS
A_500	NS	NS
A_1000	NS	NS
Urban area_in 50 m buffer (U_50)	NS	0.47 (0.04)
U_100	0.49 (0.03)	0.49 (0.04)
U_500	0.52 (0.02)	0.50 (0.03)
U_1000	0.47 (0.04)	0.47 (0.04)
Lake distance	-0.74 (<0.01)	NS
Stream azimuth	NS	NS

Table 5. Pearson's coefficients for significant correlations between landscape variables (LV, see Table 1) and mean monthly E_r for all sites. "Not significant" ($p > 0.05$) correlations are not shown and are denoted by NS. p -values for significant correlations are provided within the brackets.

LV/Month	Jan	Feb	Mar	Apr	May	Jun	Jul	Aug	Sep
F_50	NS	NS	NS	NS	NS	NS	NS	NS	NS
F_100	NS	NS	NS	NS	NS	NS	NS	NS	NS
F_500	NS	NS	NS	NS	NS	NS	NS	-0.53 (0.02)	-0.51 (0.02)
F_1000	NS	NS	NS	NS	NS	NS	NS	-0.51 (0.02)	-0.51 (0.03)
A_50	NS	NS	NS	NS	NS	NS	NS	NS	NS
A_100	NS	NS	NS	NS	NS	NS	NS	NS	NS
A_500	NS	NS	NS	NS	NS	NS	NS	NS	NS
A_1000	NS	NS	NS	NS	NS	NS	NS	NS	NS
U_50	NS	NS	NS	NS	NS	NS	NS	0.53 (0.02)	0.50 (0.03)
U_100	NS	NS	NS	NS	NS	NS	NS	0.56 (0.01)	0.55 (0.02)
U_500	NS	NS	NS	NS	NS	NS	NS	0.61 (0.01)	0.60 (0.01)
U_1000	NS	NS	NS	NS	NS	NS	NS	0.57 (0.01)	0.55 (0.01)
Lake distance	NS	0.54 (0.02)	NS	NS	NS	-0.47 (0.04)	-0.49 (0.03)	-0.57 (0.01)	-0.46 (0.05)
Stream azimuth	NS	NS	NS	NS	NS	NS	NS	NS	NS