



Flow injection analysis of ethyl xanthate by gas diffusion and UV detection as CS₂ for process monitoring of sulfide ore flotation

Thiago G. Cordeiro^a, Pilar Hidalgo^b, Ivano G.R. Gutz^b, Jairo J. Pedrotti^{a,*}

^a Centro de Ciências e Humanidades Universidade Presbiteriana Mackenzie, Rua da Consolação, 896 – 01302-907 São Paulo, Brazil

^b Instituto de Química – Universidade de São Paulo, São Paulo, Brazil

ARTICLE INFO

Article history:

Received 5 February 2010

Received in revised form 25 May 2010

Accepted 26 May 2010

Available online 1 June 2010

Keywords:

Ethyl xanthate

Flow analysis

Gas-diffusion

Spectrophotometry

Flotation process

Mining industry

ABSTRACT

A sensitive and robust analytical method for spectrophotometric determination of ethyl xanthate, CH₃CH₂OCS₂[−] at trace concentrations in pulp solutions from froth flotation process is proposed. The analytical method is based on the decomposition of ethyl xanthate, EtX[−], with 2.0 mol L^{−1} HCl generating ethanol and carbon disulfide, CS₂. A gas diffusion cell assures that only the volatile compounds diffuse through a PTFE membrane towards an acceptor stream of deionized water, thus avoiding the interferences of non-volatile compounds and suspended particles. The CS₂ is selectively detected by UV absorbance at 206 nm ($\epsilon = 65,000 \text{ L mol}^{-1} \text{ cm}^{-1}$). The measured absorbance is directly proportional to EtX[−] concentration present in the sample solutions. The Beer's law is obeyed in a 1×10^{-6} to $2 \times 10^{-4} \text{ mol L}^{-1}$ concentration range of ethyl xanthate in the pulp with an excellent correlation coefficient ($r = 0.999$) and a detection limit of $3.1 \times 10^{-7} \text{ mol L}^{-1}$, corresponding to $38 \mu\text{g L}^{-1}$. At flow rates of $200 \mu\text{L min}^{-1}$ of the donor stream and $100 \mu\text{L min}^{-1}$ of the acceptor channel a sampling rate of 15 injections per hour could be achieved with RSD < 2.3% ($n = 10$, 300 μL injections of $1 \times 10^{-5} \text{ mol L}^{-1}$ EtX[−]). Two practical applications demonstrate the versatility of the FIA method: (i) evaluation the free EtX[−] concentration during a laboratory study of the EtX[−] adsorption capacity on pulverized sulfide ore (pyrite) and (ii) monitoring of EtX[−] at different stages (from starting load to washing effluents) of a flotation pilot plant processing a Cu–Zn sulfide ore.

© 2010 Elsevier B.V. All rights reserved.

1. Introduction

Flotation is an important industrial process commonly used to separate minerals from ores. The process consists in addition of the crushed ores dispersed in an aqueous solution of organic reagents known as flotation collectors that modify the surface of the ore particle, which confers a more hydrophobic character to this surface, while the gangue remains hydrophilic. Air bubbles insufflated in the flotation cell adhere preferentially to the hydrophobic particles, carrying them to the surface as froth that is skimmed off for further purification.

Potassium and sodium ethyl xanthates (C₂H₅–O–CS₂[−]K⁺ or C₂H₅–O–CS₂[−]Na⁺) are organic salts highly soluble in water and widely used in the mining industry as flotation agents for the separation of sulfide minerals. The wide use of these organic salts as mineral collectors in the mining industry results from their relatively low cost and the high selectivity to metal sulfides. In order to ensure an efficient adsorption of the anionic collector on the

ore surface and avoid wasting, the concentration of ethyl xanthate anion in flotation cells is typically maintained at 10^{-5} to $10^{-4} \text{ mol L}^{-1}$ range.

From a practical point of view, the optimization of the collector concentration is usually made by laboratory scale experimental tests, which require frequent EtX[−] analyses. Another parameter that requires monitoring is the residual EtX[−] concentration in liquors from flotation process because EtX[−] along with its decomposition products, particularly carbon disulfide, are highly toxic to aquatic fauna and flora, representing a risk to the environment if they are discharged in water streams without previous treatment. In order to check the EtX[−] concentration in liquors from flotation cells, iodometric titration and spectrophotometric [1] methods have been traditionally used. Potentiometric [2], polarographic [3], voltammetric [4,5], electrophoretic and chromatographic [6–8] methods have also been proposed. Flow injection methods with amperometric EtX[−] determination on carbon-paste electrodes modified with silica-gel [9] and on static mercury drop electrode [10] have been suggested to increase the analytical throughput in routine analysis. A flow injection analysis of EtX[−] in NaOH 50 mmol L^{−1} with UV spectrophotometric detection at 301 nm was previously described by some authors of this work [11]. In order to remove the interference of the suspended matter in pulp sam-

* Corresponding author. Tel.: +55 11 21148145; fax: +55 11 21148754.

E-mail addresses: jpedrotti@mackenzie.br, jpedrotti@mackenzie.com.br (J.J. Pedrotti).

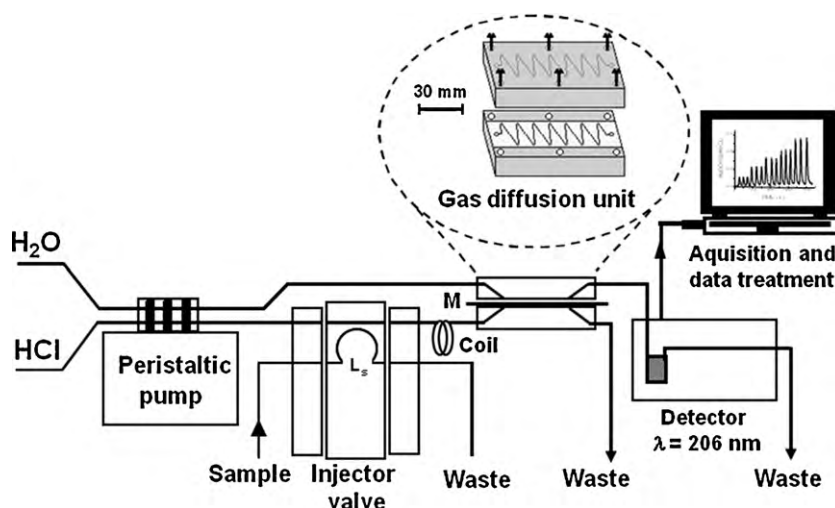


Fig. 1. Schematic diagram of the FIA system used for EtX^- determination with CS_2 spectrophotometric detection. L_s , sample loop; M, PTFE membrane.

ples from flotation plants a tangential dialysis cell was inserted between the injector valve and the spectrophotometric detector. This FIA design yielded a detection limit of $2 \mu\text{mol L}^{-1}$ and an analytical frequency of 25 determinations to be performed per hour. More recently, an online analytical system with UV detection at 301 nm was proposed for continuous xanthate determinations in laboratory flotation pulps [12]. The filter membrane overcomes interference of larger particles, but not the light dispersion effect of nanoparticles. Soluble species other than EtX^- in the dialysate or the filtrate might interfere if capable of absorbing light at 301 nm.

In this paper, a new approach to determine lower EtX^- concentration with UV spectrophotometric detection is proposed and evaluated. The FIA procedure is based on ethyl xanthate decomposition in acidic medium followed by diffusion of carbon disulfide – one of the decomposition products – across a PTFE membrane towards a receptor stream of deionized water. The dissolved CS_2 is detected at 206 nm in a flow cell. A highly sensitive and selective method was obtained, as will be shown.

2. Experimental

2.1. Reagents and solutions

The potassium salt of the ethyl xanthate was synthesized in the laboratory from ethanol and carbon disulfide, according to a method described in the literature [13]; the product was characterized by FTIR spectrophotometry and the purity was determined by iodometric titration. All reagents used were of analytical grade. The solutions were prepared with distilled, deionized water (resistivity $> 18 \text{ M}\Omega \text{ cm}^{-1}$), obtained with a Barnsted Nanopure system. The stock solution of the potassium salt containing $1.0 \times 10^{-2} \text{ mol L}^{-1}$ of EtX^- was prepared at weekly intervals by dissolution of a required mass in deionized water. Analytical solutions of EtX^- were prepared by dilution of the EtX^- stock solution on a daily basis. Pyrite ore was obtained from mines located in Brazil's southeastern region (Espírito Santo State). Samples of the ore were milled in a mortar and sieved. The fraction with average particle size of $100 \mu\text{m}$, determined by a particle size analyzer (Marven) was used for simulated flotation experiments.

2.2. Flotation experiments

The flotation process was simulated in the laboratory by loading a 100 mL beaker with 15 g of pyrite ore and deionized water up to 50 mL (30% ore, w/v). A 3 cm long magnetic stirring was used

to vigorously stir the suspension under insufflation of synthetic air ($80\% \text{N}_2 + 20\% \text{O}_2$) at flow rate of 300 mL min^{-1} . Aliquots of an EtX^- solution were added stepwise with a micropipette in a procedure similar to titration. For each addition, after 15 min stirring, the suspension was allowed to rest for 5 min, for decantation and a sample of 2 mL of supernatant was collected for evaluation by the proposed FIA-spectrophotometric method. The original liquid volume in the flotation cell was obtained again by adding 2 mL of water.

Solid and liquid samples representative of all steps of the flotation process were obtained from a pilot plant operating with a sulfide ore rich in copper and zinc at the Universidad Nacional Mayor de San Marcos (UNMSM), Lima, Peru.

2.3. Instrumentation

A Hewlett-Packard 8452A diode-array spectrophotometer was used to obtain the absorption spectra of the potassium ethyl xanthate and of its decomposition products. Fluid propulsion was promoted with an Ismatec pump model REGLO. A 0.5 mm i.d. PTFE tubing was used throughout the FIA circuit except for the Tygon® pump tubing. Samples and reference solutions were injected in the FIA system with a manually operated, rotary injector valve provided with replaceable loops of 50–600 μL . The system was operated with an in-line gas diffusion unit, GDU made in the laboratory (Fig. 1).

The gas diffusion unit consisted of a 15 mm wide Teflon® tape inserted between two $90 \text{ mm} \times 18 \text{ mm} \times 40 \text{ mm}$ blocks made of metacrylate polymer, held tightly together by six 3/16" brass screws, as it can be seen in Fig. 1. The 1 mm wide and 0.2 mm deep channels engraved on each block on the surface in contact with the membrane have a triangle waveform of about 10 mm amplitude, starting and ending in orifices in the block for entrance and exit of the solutions.

The spectrophotometric detection of ethyl xanthate was made with a Femto UV–visible spectrophotometer model 700 provided with a Hellma model 178.710 micro flow-through cell of 80 μL internal volume and 10 mm light path. The absorbance signals were acquired with a PCL 711 DAQ (Advantech, USA) stored on a Pentium III 450 MHz microcomputer by using a data acquisition/processing software written in Object Pascal. All measurements were made at room temperature ($25 \pm 2^\circ\text{C}$).

3. Result and discussion

The characteristic absorption bands of the ethyl xanthate anion in the UV spectral region reported [14] were experimentally

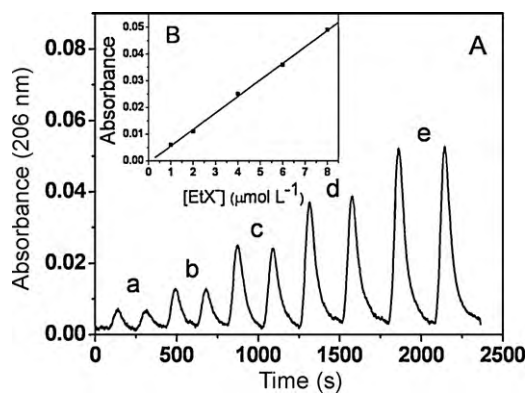


Fig. 4. (A) Absorbance signals as a function of ethyl xanthate concentration in the $1\text{--}8 \times 10^{-6} \text{ mol L}^{-1}$ range (a–e), for $300 \mu\text{L}$ injections. The peak heights correspond to the absorbance values in (B), the calibration curve, where the concentrations of the respective peaks can be readout.

sensitivity. However, for too large sample volumes, in the single flow line configuration, the central region of the plug lacks the acidity for reaction completion and the broadened peak height is reduced. The peak lowering for higher sample loops was overcome by configuring a merging zone flow circuit where the channel with continuously pumped acid merges with the sample injected in a separate channel with water as the carrier. However, the limited gain in sensitivity at sample volumes of $500 \mu\text{L}$ and higher did not pay-back for the peak broadening and lengthening of the procedure to over 8 min per determination – a disadvantage for high demand routine work. Therefore, the single line circuit with a sample injection of $300 \mu\text{L}$ was chosen as a compromise condition between sensitivity and analytical throughput.

The influence of the reaction coil length on the analytical signal was found insignificant. By shortening the coil length from 50 to 5 cm, the signal decreased by only 5%. This occurred because at the low flow rate of 0.1 mL min^{-1} , the average residence time in the GDU, of about 10 s, added to displacement time through connectors, short coil and cuvette entrance tubing, suffices for the completion of the fast reaction in the highly acidic medium.

The effect of the hydrochloric acid concentration was examined over the range of $0.1\text{--}2.5 \text{ mol L}^{-1}$ in the donor channel for samples of $300 \mu\text{L}$ of $1.0 \times 10^{-5} \text{ mol L}^{-1}$ EtX^- standard solution at 0.2 mL min^{-1} flow rate. As it can be seen in Fig. 3(B), the absorbance signal curve grows with the acid concentration but with a slope that decreases continuously, approaching a plateau at hydrochloric acid concentrations above 2.0 mol L^{-1} , suggesting that a nearly quantitative formation of CS_2 is reached in the donor channel. For this reason, a 2.0 mol L^{-1} HCl solution was adopted in the method. This high electrolyte concentration also exerts a salting-out effect on the CS_2 , improving the L/G/L transference to the H_2O acceptor stream. Addition of an extra electrolyte, like NaCl did improve the salting-out effect at the lowest examined HCl concentration ($1 \times 10^{-1} \text{ mol L}^{-1}$), but not noticeably at the already high ionic strength of the 2.0 mol L^{-1} HCl solution.

3.2. Analytical characteristics

Fig. 4 shows the UV spectrophotometric response for duplicate injections of $300 \mu\text{L}$ ethyl xanthate in the $1.0\text{--}8.0 \mu\text{mol L}^{-1}$ range. The proportionality between the absorbance and the EtX^- concentrations was confirmed from the calibration plot shown in the inset. The evaluation of this data by linear regression showed a slope of 0.0062 ($s = 1.3 \times 10^{-4}$) $\text{LA} \mu\text{mol}^{-1}$ and a nearly null intercept of -5.4×10^{-4} ($s = 6.6 \times 10^{-4}$) with a correlation coefficient of 0.999. The estimated detection limit, LOD, at the

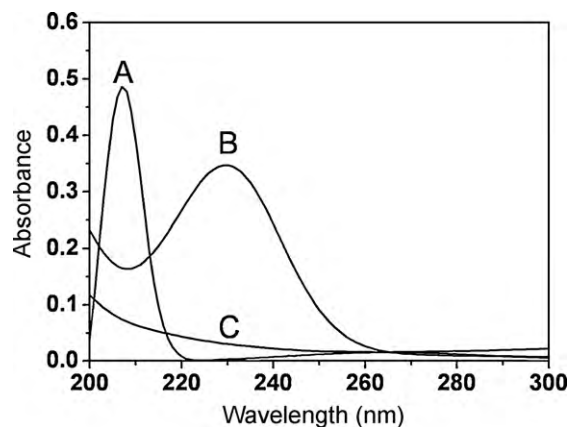


Fig. 5. UV absorption spectra of CS_2 and HS^- . (A) Aqueous $7.5 \times 10^{-6} \text{ mol L}^{-1}$ CS_2 solution; (B) aqueous $5.0 \times 10^{-5} \text{ mol L}^{-1}$ Na_2S solution, with pH adjusted to 8.3 to displace equilibrium to HS^- ; (C) same as (B), pH adjusted to 5.6 with acetic acid, to simulate the pH of the acceptor stream.

adopted conditions was $3.1 \times 10^{-7} \text{ mol L}^{-1}$ (3 s/slope criteria), and the LOQ, about $1.0 \times 10^{-6} \text{ mol L}^{-1}$, corresponding to 36 ng of EtX^- in $300 \mu\text{L}$ the injected. The range of linear response is, however, much wider than that shown in Fig. 4, extending to $2.0 \times 10^{-4} \text{ mol L}^{-1}$. The repeatability of the measurements was evaluated at the $8.0 \times 10^{-6} \text{ mol L}^{-1}$ EtX^- concentration, yielding a RSD of 2.3% ($n = 10$). For $300 \mu\text{L}$ injections at $200/100 \mu\text{L min}^{-1}$ flow rates in the donor/acceptor channels an analytical frequency of 15 injections per hour was attained. In applications where such a low LOD is not required, sample throughput can be doubled by reducing the sample loop and increasing the flow rates.

3.3. Interferences

A study of some potential interferences of the method was carried out under the above-established conditions. Particulate matter in suspension usually provides optical interferences in analytical methods with spectrophotometric detection. The suspended matter in solution scatters the incident radiation and introduces an error in the absorbance measurement. Pretreatments like decantation or filtration of the suspended particulate matter of the flotation pulp samples are time consuming and do not completely remove this interference. On line filtering of the pulp has been demonstrated in laboratory scale for speeding-up particle removal. Although no blockage was observed for 50 min periods of continuous UV spectrophotometric monitoring of xanthate [12], this approach does not remove light dispersing nanoparticles, avoidable by dialysis, as shown for ethyl xanthate determination in pulp by FIA with a tangential dialytic flow cell [11]. However, any small molecule can cross both the filter and the dialysis membrane, while the GDU with hydrophobic Teflon® semipermeable membrane used in this work guarantees that only volatile compounds in the acidified sample stream are transferred to the acceptor channel, improving the selectivity.

Suspended particles of sulfured ores in the pulp flotation process, if not completely removed (by dialysis), react with the acidic medium releasing volatile hydrogen sulfide, that can be partially transferred to the acceptor channel with the use of the proposed method. By examining the absorption spectra of CS_2 , H_2S and HS^- in Fig. 5, it becomes clear that displacing the $\text{H}_2\text{S}/\text{HS}^-$ equilibrium to the more protonated form minimizes interference [15]. The slightly acidic character of the acceptor solution (pH ~ 5.6) caused by absorption of CO_2 from the air by the deionized water suits this purpose, while the addition of 1 mmol L^{-1} of acetic acid displaces the pH to a safer value around 3.9.

The extent of this potential interference was evaluated by adding S^{2-} to the EtX^- standard solutions. For example, addition of $1.0 \times 10^{-4} \text{ mol L}^{-1}$ sulfide to a $1.0 \times 10^{-5} \text{ mol L}^{-1}$ EtX^- solution causes a 22% increase of the absorbance peaks recorded at 206 nm. In order to perform a more realistic assessment of the matrix effect, injections of an aqueous supernatant solution from flotation pulp of pyrite ore (30%, w/v) free from EtX^- were made. These tests revealed peaks of the “blank” with absorbances of 0.003 above baseline; this would cause a positive error of only about $5.0 \times 10^{-7} \text{ mol L}^{-1}$ in the determined EtX^- concentration. Thus, corrections for the interference of H_2S are only recommended for determinations near the LOQ for EtX^- . For the slightly acidic acceptor (pH 5.6) where H_2S widely predominates (>96%), the molar absorptivities of the H_2S are 1500 and $600 \text{ L mol}^{-1} \text{ cm}^{-1}$ at 206 and 230 nm, respectively, defining a 2.50 ratio, while for CS_2 the corresponding absorptivities are $65,000 \text{ L mol}^{-1} \text{ cm}^{-1}$ and zero. Therefore, the blank correction to be applied to the EtX^- determination for a given ore being processed can be obtained by simply subtracting 2.50 times the absorbance measured at 230 nm from the total absorbance at 206 nm. When a multiwavelength spectrophotometer (e.g., diode array) is available, accurate correction can be obtained for every sample. Since little correction is required measurements at 230 nm for single wavelength photometers may occur at longer intervals of time, especially for a continuously running process with low variability of conditions.

Flotation plants use a frothing agent to control the size of the air bubbles as well as to stabilize the froth in the process. Terpenoid alcohols like methyl isobutyl carbinol (MIBC) (4-methyl-2-pentanol) are widely used, being effective in low dosage, for example, 20–53 g for a ton of ore [16]. The effect of MIBC on the analytical method was examined to evaluate possible interference on the hydrophobic properties of the PTFE membrane which could affect the diffusion of CS_2 to the acceptor channel. For this purpose, six different concentrations of MIBC ranging from 5 to 90 mg L^{-1} were mixed with an aqueous solution containing $8.0 \times 10^{-5} \text{ mol L}^{-1}$ of EtX^- and injected in the FI system. No noticeable difference between the absorbance peak heights was observed after twenty injections, indicating that the performance of the transference of CS_2 through the PTFE membrane is not affected by the presence of MIBC even at concentrations above the ones used in practice.

3.4. Application to the evaluation of the adsorption of EtX^- on pyrite

To evaluate the performance of the proposed FIA system, an adsorption study of EtX^- on the ore particles was carried out by experiments, which are similar to titration of the ore surface by incremental addition of EtX^- . In a 100 mL beaker, 15.0 g of pyrite powder were added to 50 mL of water containing 10 mg L^{-1} of MICB as frothing agent. Convection of the pulp was applied by a magnetic stirrer and by aeration with synthetic air under 300 mL min^{-1} flow rate. Additions of $1 \times 10^{-6} \text{ mol}$ of EtX^- at a time were made with the aid of a manual micropipette. After each addition, both the stirring and the aeration were activated for 15 min and turned off for 5 min, for settling of the pyrite. A 2.0 mL aliquot of the supernatant solution was filtered through a $0.45 \mu\text{m}$ pore size disposable syringe filter unit and injected into the FIA system for EtX^- determination. The flotation was restarted after addition of 2 mL of water and $1 \times 10^{-6} \text{ mol}$ of EtX^- .

A “titration plot” resulting from these measurements is illustrated in Fig. 6, showing that EtX^- is first detected in the solution after the addition of $10.0 \mu\text{mol}$ of EtX^- to 15 g of ore, indicating that the surface is getting saturated with adsorbate. In the present study, no sample pretreatment was required. However, for a continuously running flotation process, rather than waiting the sedimentation

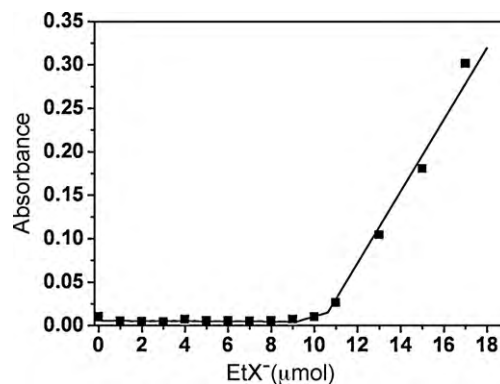


Fig. 6. Monitoring of the EtX^- adsorption capacity on powdered pyrite. Additions of EtX^- to 15.0 g of pyrite powder suspended in 50 mL of water.

Table 1

Examples of EtX^- monitoring in various stages of the flotation process of Cu–Zn sulfide ore.

Sample	EtX^- concentration ($\mu\text{mol L}^{-1} \pm \text{SD}$, $n = 3$)
Ore feed liquor (before EtX^- addition)	<LOD
Flotation liquor in the cell	162.0 ± 5.0
Flotation liquor accompanying the separated tailing rock	204.0 ± 6.5
Flotation liquor accompanying the collected froth with concentrated ore	171.0 ± 2.6
Effluent (wastewater from ore washout)	1.78 ± 0.09

of the particles of the samples, it may be more advantageous to apply a filtration step with the help of disposable syringe filters. This method was found to be effective in avoiding tubing clogging and/or deposition of particles inside the donor channel of the gas diffusion unit, in the long term.

3.5. Monitoring EtX^- in flotation liquors of a pilot plant

The proposed FIA method was applied to samples collected at all stages of the flotation process of a pilot plant (UNMSM, Peru) running with a sulfide ore rich in copper and zinc. Some results are presented in Table 1. In the liquor of the wetted grinded starting sulfide ore before addition of flotation agent, as expected, no EtX^- was detected. The correction of the minimum interference of HS^- was evaluated for this sample (as explained in Section 3.3). It remained nearly constant throughout the monitoring and was neglectable for all but the first and last entries of Table 1, respectively, the starting liquor and the effluent.

Table 1 shows that all liquor samples during the flotation operation present ethyl xanthate concentrations far above the region covered in Fig. 4, but still linear. For the monitoring of processes operating at higher EtX^- concentrations, instead of diluting the sample or shortening the sample loop, the most practical approach is to increase the flow rate and the HCl concentration, with gain in analytical frequency.

4. Conclusions

The new flow method for ethyl xanthate determination presented here is simple, robust, sensitive and selective, suitable for direct application to flotation liquor after filtration or some minutes of decantation, to avoid massive introduction of ore particles. The decomposition of the analyte into CS_2 and ethanol in acidic medium followed by gas diffusion through a PTFE membrane and measurement of the intense absorbance of CS_2 at 206 nm grants high selectivity to the method against colloidal matter in the flota-

tion liquor and/or non-volatile chemicals. The only interference found stems from H_2S evolution at sulfured ore particles during the acidification step. Correction is needed only at EtX^- concentrations near the LOQ and can be easily done by direct evaluation of the HS^- concentration at 230 nm and subtraction of its corresponding absorbance at 206 nm. The quickness and wide linear dynamic response of the method, spanning from the LOQ of $97 \mu\text{g L}^{-1}$ up to 24 mg L^{-1} , favors its direct application to EtX^- determination not only in samples from the flotation process itself, but to evaluate the residual EtX^- in liquid effluents as well, as demonstrated.

Acknowledgements

The authors wish to thank Fundo Mackenzie de Pesquisa (Mack-pesquisa) for providing financial support and a fellowship and to the CNPq (Conselho Nacional de Desenvolvimento Científico e Tecnológico) for a grant. We are also grateful to Eng. Daniel Lovera and its group from the Universidad Nacional Mayor de San Marcos

(UNMSM), Peru for providing samples of all steps of an ore flotation process.

References

- [1] M. Rahmam, Anal. Chem. 43 (1971) 1614.
- [2] W.H. Chan, A.W.M. Lee, K.T. Fung, Talanta 35 (1988) 807.
- [3] A.M. Bond, Z. Sztajer, G. Winter, Anal. Chim. Acta 84 (1976) 31.
- [4] A. Ivaska, J. Leppinen, Talanta 33 (1986) 801.
- [5] O.M. Zakharova, M.S. Zakharov, J. Anal. Chem. 58 (2003) 573.
- [6] A.K. Malik, W. Faubel, Fresenius J. Anal. Chem. 367 (2000) 211.
- [7] F. Hissner, B. Daus, J. Mattusch, K. Heinig, J. Chromatogr. A 853 (1999) 497.
- [8] F.P. Hao, E. Silvester, G.D. Senior, Anal. Chem. 72 (2000) 4836.
- [9] M. Kopanica, V. Stara, A. Trojanek, Talanta 37 (1990) 1067.
- [10] P. Hidalgo, I.G.R. Gutz, Talanta 54 (2001) 403.
- [11] R.S. Fontenele, P. Hidalgo, I.G.R. Gutz, J.J. Pedrotti, Talanta 72 (2007) 1017.
- [12] F. Hao, K.J. Davey, W.J. Bruckard, J.T. Woodcock, Int. J. Miner. Process. 89 (2008) 71.
- [13] E.C. Horning, Organic Synthesis, vol. 3, Wiley, New York, 1958, p. 741.
- [14] A. Pomianowski, J. Leja, Can. J. Chem. 41 (1963) 2219.
- [15] P. Zuman, W. Szafranski, Anal. Chem. 48 (1976) 2162.
- [16] M.C. Fuerstenau, G.J. Jameson, R.-H. Yoon (Eds.), Froth Flotation: A Century of Innovation, SME, Denver, USA, 2007, p. 794.