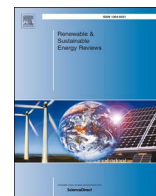




Contents lists available at ScienceDirect

## Renewable and Sustainable Energy Reviews

journal homepage: [www.elsevier.com/locate/rser](http://www.elsevier.com/locate/rser)

## Remodelling façade design for improving daylighting and the thermal environment in Abuja's low-income housing

Mahmood Abdulkareem<sup>a</sup>, Sura Al-Maiyah<sup>b,\*</sup>, Malcolm Cook<sup>c</sup><sup>a</sup> Portsmouth School of Architecture, University of Portsmouth, Portsmouth PO1 2DJ, United Kingdom<sup>b</sup> School of the Built Environment, University of Salford, Salford M5 4WT, United Kingdom<sup>c</sup> School of Architecture, Building & Civil Engineering, Loughborough University, Leicestershire LE11 3TU, United Kingdom

## ARTICLE INFO

## Keywords:

Thermal comfort  
Visual comfort  
Overheating  
Passive solutions  
Low-income housing  
Nigeria

## ABSTRACT

The housing typologies that were developed as part of Abuja's master plan over 30 years ago are still in use today as prototypes for low-income housing developments. The value of the local climate received only cursory consideration in the early developments; as the process was mainly focused on the delivery of units needed to accommodate those involved in the construction of the city. More detailed records of the climate have become available since the mid-1990s. Yet, despite the availability of such data and the global interest in eco-friendly architecture, energy use per household has increased in Abuja over the last two decades. Nigeria is already struggling to meet its current energy demands; therefore, it is important to examine whether improvements made to future housing design can assist in reducing their energy use.

This paper evaluates the performance of four of Abuja's common housing types and examines the impact of changing their fenestration design on occupants' comfort, using validated simulation. Assessing the performance of the buildings in their existing state revealed clear overheating problems and excessive natural lighting. However, the investigation indicated a 4–6% reduction in the frequency of thermal discomfort and a 4–29% reduction in visual discomfort by adjusting the orientation of the facades. Integrating external shading components can also reduce thermal and visual discomfort by up to 4% and 29%, respectively.

## 1. Introduction

Nigeria has the largest population in Africa with over 186 million people, of which 47.8% live in urban areas. The country has been experiencing a relatively high population growth and rate of urbanisation estimated in 2014 at 2.7% and 4.7% respectively [1]. Due to such rapid rates of urban population growth, concerns over the deficiency in the housing quality across the region and the lack in housing availability to accommodate the urban residents have been repeatedly reported in previous studies [2–4]. Nigeria's current housing deficit was recently projected at over 17 million units [5]. Along with the ongoing housing shortage, there is also limited access to electricity in the country, primarily a consequence of a rapid increase in population without a corresponding increase in the production of electricity [6]. 55% of the existing households, equivalent to over 90 million people, lack access to grid supply of electricity and the supply to those connected to the grid is unreliable [7]. As a result, the use of back-up power generators to mitigate poor grid-based supply has become increasingly common in Nigeria over recent decades. A survey of over 1000 households located in Lagos [8] revealed that between 60–92% of the examined sample use

private back-up generators frequently.

Like many other countries in Sub-Saharan Africa the housing sector in Nigeria has been a main contributor to the total energy use in buildings [9]. Over 57% of the electrical energy consumed in Nigeria is used in housing [10], mainly in cooling and lighting. An investigation of electricity use in residential units in Gusau (North of Nigeria) [11] revealed that on average 78% of the annual electrical energy consumed in the units was dedicated to running air conditioning systems and 1% for artificial lighting. However, in a study on energy consumption pattern of dwellings in Kaduna and Kano, (also North of Nigeria) the authors reported that on average 62.7% of the annual electrical energy consumed was used for lighting while 23.6% was used to run air conditioning systems [12]. These findings suggest that the ability to minimise the use of mechanical cooling and artificial lighting in providing the level of comfort desired by the occupants in Nigeria's housing is key for reducing the overall energy use in the region.

Notwithstanding the above, the contemporary architectural practice that emerged in the 1970s has contributed to inefficient energy use in the housing sector (through the reliance on mechanical solutions) and is still prevalent today. Over the years, this has led to increasing demand

\* Correspondence to: University of Salford, Room 5.40, New Adelphi Building, Salford M5 4WT, United Kingdom.  
E-mail address: [S.A.M.Al-Maiyah@salford.ac.uk](mailto:S.A.M.Al-Maiyah@salford.ac.uk) (S. Al-Maiyah).

<http://dx.doi.org/10.1016/j.rser.2017.10.010>

Received 18 November 2016; Received in revised form 23 June 2017; Accepted 3 October 2017  
1364-0321/ Crown Copyright © 2017 Published by Elsevier Ltd. All rights reserved.

for active energy through various devices for both cooling and lighting [13]. With such dependency on artificial solutions and the rapid increase in population, some believe that the energy consumption in Nigeria might become impossible to sustain in the future [14].

Several technical studies have been undertaken to examine energy use and occupants' sensation of comfort in Nigeria's housing across different cities. For example, Adaji et al. [15] have recently investigated urban residents' perception of thermal comfort in four low-income residential buildings in Abuja using occupant comfort survey and environmental monitoring. Similarly, Adunola and Ajibola [16] examined the relationship between the quality of the residential indoor thermal environment and the pattern of use of spaces among residents of over 500 dwellings situated in different areas in Ibadan metropolis. In a follow up study published in 2014, Adunola [17] further reported the results of the thermal comfort survey of the same sample. The main objective of this (later) phase of evaluation was to examine the indoor thermal experience of the residents in relation to the outside air temperature across the various neighbourhoods. Likewise, Akande and Adebamowo [18] reported the findings of a comfort field study of residential properties in Bauchi in northern Nigeria. Akinwolemiwa and Gwilliam [19], on the other hand, have explored low energy and passive cooling opportunities to improve thermal comfort in low-income residences in Lagos through the use of financially affordable living walls (vertical green systems). As informative as these studies are, providing an insight into the thermal behaviour of Nigeria's housing, surprisingly only a few (studies) examined the environmental performance of the residential architecture of Abuja, where one of the most extensive public housing development programmes in the country's history has been implemented [20,21]. In addition, most publications on comfort and the housing sector in Nigeria tend to focus on the thermal aspect of the housing units, while little attention is given to the visual aspect of the design. Of the few published daylight-related studies in Nigeria's urban context and climatic zone is a study by Atolagbe [22]. The paper examined residents' satisfaction with natural light availability in different house types across three residential zones in Ogbomoso using questionnaire survey.

As improving the thermal performance of residential dwellings could positively contribute to the thermal residential environment, providing an acceptable level of daylight indoors is equally essential for improving occupants' visual comfort. Effective utilisation of passive design measures has long been proven to help greatly in improving residential occupants' comfort while reducing energy bills cost [23–26]. Yet, despite its tropical location and the abundance of solar radiation all year round little is known about the effectiveness of applying passive principles to residential buildings design in Nigeria's climate zone [27]. Hence, this paper assesses the performance (of four) of Abuja's common low-income housing types and examines the impact changing their fenestration components have on thermal comfort and daylighting. The paper aims at exploring whether the integration of passive design principles that were not considered in the early generation of housing schemes built in the city can assist in improving their occupants' sensation of comfort. The sample selected as a basis for the evaluation is among the early housing typologies developed by the government as part of mass housing schemes. The purpose of the investigation is to propose recommendations to improve occupants' comfort in future public housing schemes for the low-income group through the integration of low-energy passive design methods.

## 2. Abuja's housing sector: an opportunity for improvement

The architectural landscape in many cities throughout Nigeria has changed since the 1970s, largely dominated by mass housing production schemes implemented by the public sector [21,28]. The oil boom in the mid-70s boosted the country's economy and in turn the government, for the first time, participated actively in the provision of housing for all income groups. This led to the housing sector becoming more



Fig. 1. Location of Abuja, Nigeria.

involved in turn-key projects built on the premise that energy was cheap and as a result form became more important than performance in the building design [28].

Abuja, the capital city of Nigeria, was also conceived in the mid-1970s, when the government introduced the most extensive public housing development programme in Nigeria's history. At the early stage of development, the designers involved in the process were mainly focused on providing the required quantity of dwellings to accommodate those involved in the construction of the city [29]. This is clearly reflected in the master-plan stating that *"the architectural and engineering aspects of housing are perhaps the least complicated or problematic aspects of housing"* [30]. With this mind-set, thousands of residential buildings in Abuja were originally designed and eventually constructed without proper regard for the climatic context of the region [31] (Fig. 1).

Since the mid-1990s more records of the climatic conditions have become available as the city has become one of the largest urban areas in Nigeria. However, despite the availability of such records and the global interest in climate conscious architecture, the prototypes for low-income housing in the schemes that were developed as part of Abuja's master plan over 30 years ago are still in use today as a blueprint for housing developments [28]. Thus, the homogeneous nature of public housing design has partially negated the possibility of improvements towards more energy efficient dwellings. Nevertheless, only about half the area allocated for residential building construction in the city is fully developed (Fig. 2). With the government seeking to complete the remaining phases of development, there is a real opportunity to influence the architectural practice in the city by examining the performance of this early generation of housing which is still in use today, providing guidelines for future development.

### 2.1. Location and climate of Abuja

Located in the central region of Nigeria (at latitude 9°06'N and longitude 7°49'E), Abuja has a tropical Savannah climate where two pronounced seasons prevail, namely the dry season and the rainy season. The dry season starts in November and ends in April, while the rainy season occurs from May to October.

The dry season is characterised by very little cloud cover and intense solar radiation (5.9–6.3 kWh/m<sup>2</sup>/day), as a result daytime temperatures can be as high as 37 °C. During the rainy season the combination of solar radiation (4.2–5.6 kWh/m<sup>2</sup>/day) and the humidity of the air mass forms dense clouds and leads to the occurrence of torrential rain, which has a cooling effect. Nevertheless, daytime temperatures can still rise above 29 °C [32,33]. The findings reported in this paper focused on the dry season because of the relatively high temperatures that occur during this time of year in Abuja and the negative effect it





Fig. 2. Illustration of the developed area of Abuja (highlighted in red) on the master plan drawing. (For interpretation of the references to color in this figure legend, the reader is referred to the web version of this article.)

has on occupants' comfort.

## 2.2. Case study buildings

Four case study buildings situated in three districts of Abuja (Wuse I, Garki II, Gaduwa) were selected for the evaluation (Figs. 3 and 4). The first building (B1) is a two-bedroom block of flats in Wuse I constructed in 1983. The second building (B2) is a mixed-use detached duplex in Garki II that was built in 1995. The third case study building

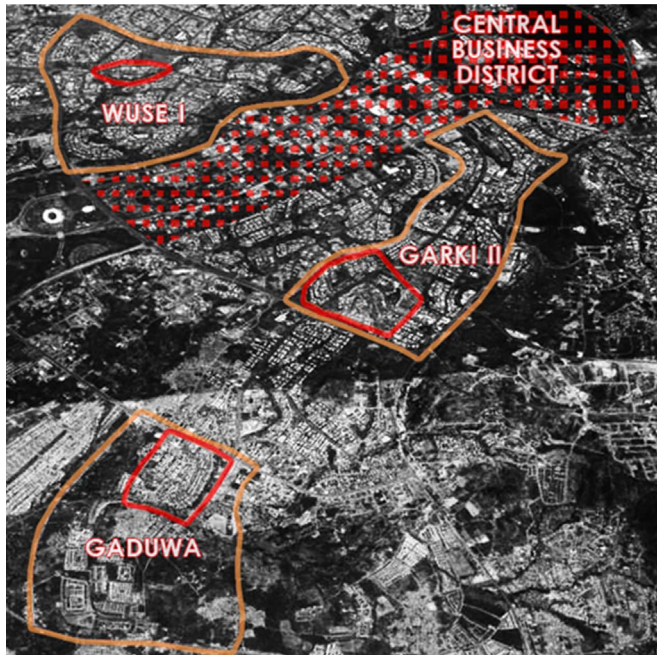


Fig. 3. Satellite photograph of Abuja, with selected neighbourhoods outlined in red and districts outlined in orange. (For interpretation of the references to color in this figure legend, the reader is referred to the web version of this article.)

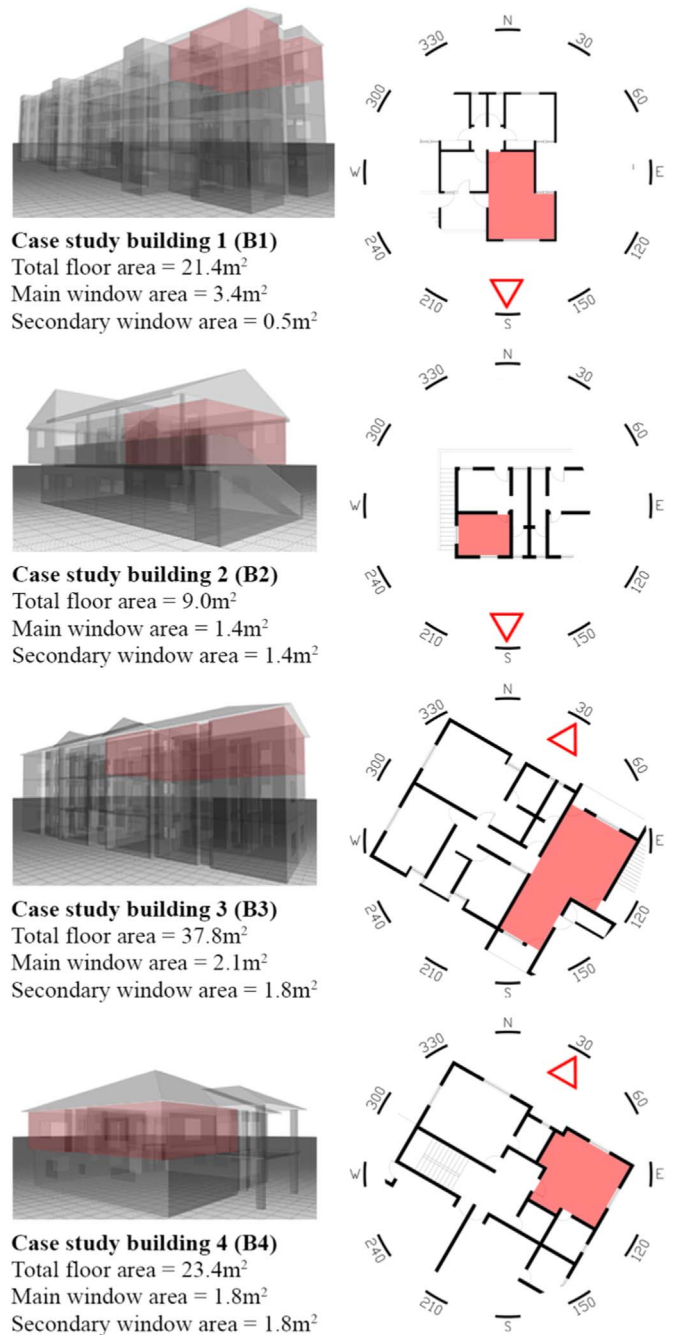


Fig. 4. IES-VE models and floor plans of case study buildings with the rooms selected for evaluation highlighted in red. (For interpretation of the references to color in this figure legend, the reader is referred to the web version of this article.)

(B3) is a three-storey building in Gaduwa, constructed in 2003 that consists of six three-bedroom flats. The fourth building (B4) is part of the same housing development project as B3 in Gaduwa. It was initially designed as a four-bedroom house, but was later converted into a multi-dwelling residential building with shared facilities. Apart from B2, the other three buildings are prototypes that have been reproduced multiple times as part of government housing schemes in Abuja. As a result, collectively the selected dwellings have geometric characteristics and building materials that are comparable to over 450 other dwellings in the chosen neighbourhoods.

A room from each case study building (the living rooms in B1 and B3, and the bedrooms in B2 and B4) was selected as a basis for the evaluation. The overall layout and geometry of each room as well as

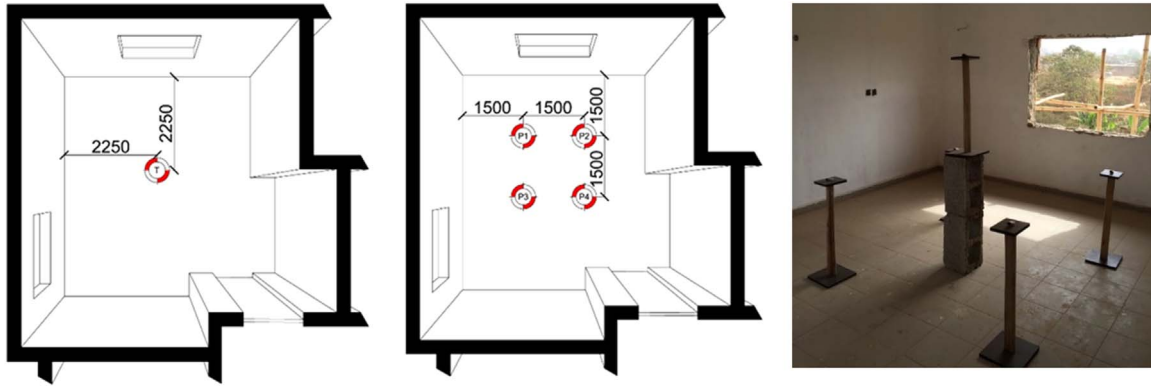


Fig. 5. Position of temperature (left) and illuminance data loggers (middle) in the test room.

information on the total floor area, dimensions of the openings, orientation and shading components (if any) are shown in Fig. 4.

### 3. Methodology

The building modelling software Integrated Environmental Simulation (IES-VE) [34] was used to examine the performance of the case study buildings during the dry season (November to April). For each case a 3D digital model was constructed based on the actual building form and information on building materials collected during the fieldwork. The simulation was set up for full-time occupancy with the maximum dwelling occupancy rate specified by the Nigerian government [35]. It was assumed that occupants will always take effective steps to improve the indoor conditions. Hence, during the simulations the windows are opened if the indoor operative temperature exceeds the acceptable limits for comfort and the outdoor dry-bulb temperature is below the indoor operative temperature.

#### 3.1. Validation

Case study building 4 was empty at the time the fieldwork was carried out due to renovation, and thus it was chosen for the simulation model validation since there was no problem of occupants interfering with logging devices. The validation was implemented by statistically comparing the air temperatures and illuminance levels recorded in the bedroom with the simulated values. Two monitoring programmes were planned and executed; one during the rainy season between June 1st and June 30th and the second during the dry season between December 1st and December 21st, 2015. However, being under renovation meant that some additional adjustments needed to be applied to the 3D digital model of the building/room as both the glazing and window frames were removed from the external openings in the model to reflect the actual situation (see Fig. 5\_ right image).

The procedural method adopted in performing the in-situ monitoring carried out over the dry season is explained below.

The room was monitored in a passive mode where electrical appliances were switched off during the monitoring period. Temperature and illuminance readings were logged hourly using 5 HOBO pendant temperature and light data loggers located at a height of 1.6 m and 0.75 m (Fig. 5\_ left & middle). An additional data logger was placed outside the room in the shaded porch area to record the external air temperature. Illuminance readings were also recorded outside at a point with minimal physical obstructions.

In addition, the area of the wall, floor and ceiling surfaces were divided into different zones, as illustrated in Fig. 6, to establish their reflection properties (which again was made possible because of the construction works). A luminance meter and illuminance meter were then used to measure the luminance (L) and illuminance (E) of a point within each zone. The values collected at each surface were subsequently used to calculate the average reflectance of these areas using the following equation [36]:

$$\rho = (L/E) \times \pi \quad (1)$$

Where:

$\rho$  = Reflectance (%)

L = Luminance (candela per square meter (cd/m<sup>2</sup>))

E = Illuminance (lux)

The reflectance values calculated for the internal walls, floor and ceiling in the test room were 90%, 36% and 89% respectively. These values were then applied to the simulation tool and a correlation analysis was subsequently conducted between the simulation and the recorded data using Pearson's correlation coefficient.

The results indicated a significant positive correlation between the values for air temperature in the test room and the external

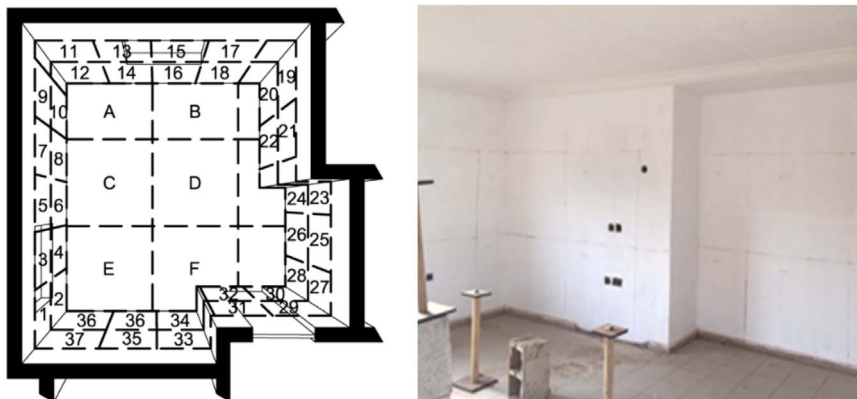


Fig. 6. Illustration of the different reflectance zones on the walls and floor of B4.

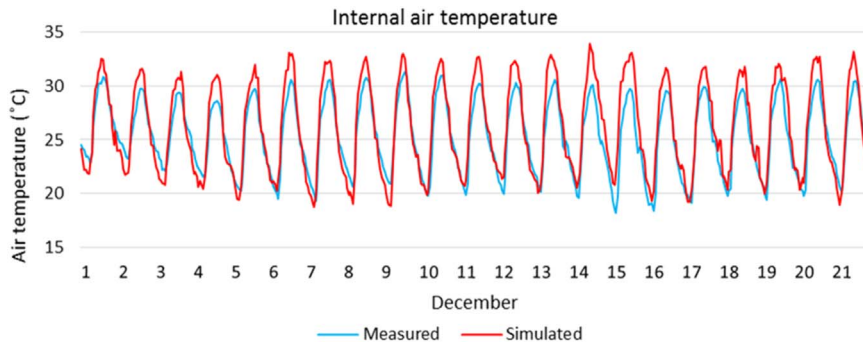


Fig. 7. Measured and simulated internal air temperature in the test room in B4.

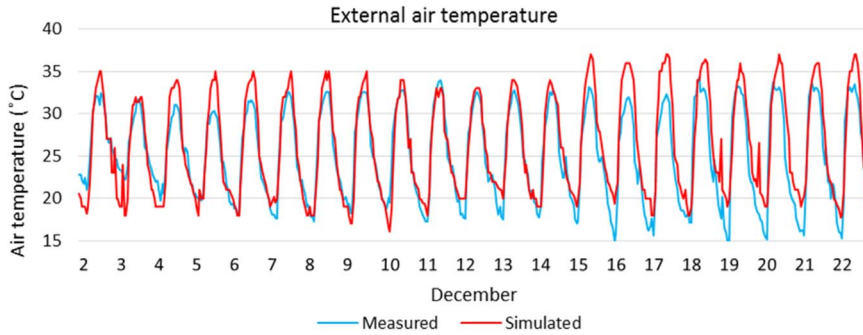


Fig. 8. Measured and simulated external air temperature in the test room in B4.

temperature. Over the three weeks examined, the correlation between the measured and simulated internal air temperature ranged between 0.9625 and 0.9521. Similarly, the correlation between the measured and simulated external air temperature ranged between 0.9557 and 0.9316. Furthermore, the average errors calculated between the two values were only between 5% and 9% (Figs. 7 and 8), confirming the accuracy of the software in predicting the thermal environment. However, the accuracy of the predictions is dependent on the accuracy of the weather file available for the location.

The correlation between the measured and simulated internal illuminance levels was also significant at the reference points ranging between 0.9981 and 0.9025. Yet, the highest average relative error was 32% during the first week of December, and the lowest value was 28% during the second week. As shown in Fig. 9 there is consistent similarity in the pattern of daylighting in the room, nevertheless, the maximum levels of illuminance measured were about 1000lux above the simulated illuminance levels, for about 20% of the time over the days examined.

It was observed that sky conditions in Abuja remained constantly clear and sunny throughout the measurement period in December, yet the results showed notable differences between the maximum measured illuminance values and the maximum values predicted by IES Radiance. The external illuminance level and sky luminance were measured on the site of B4 at 1 pm on December 15th, using the illuminance and

luminance meters.

The actual illuminance and luminance values recorded at site were around 82klux and 250,900 cd/m<sup>2</sup>, respectively, while the maximum external illuminance levels predicted by Radiance using sunny sky conditions were only about 73klux on each day during the examined period.

In Abuja's sunny sky conditions, a 30% error is significant and could be misleading. Hence a correction factor was used to recalculate the average illuminance levels in the test room on the 1st and 15th of December. The corrected values were calculated using an equation adapted from a previous study carried out by [35]:

$$CS = (Sv \times CF) + Sv \quad (2)$$

Where;

CS = corrected simulation

Sv = simulated value

CF = the average value of the relative error/ correction factor

Comparing the corrected simulations with the measurement values showed a minimum relative error of 11% and a maximum error of 15%. These values are in agreement with those reported by Kim and Chung [37], and Al-Maiyah and Elkadi [38] and much lower than the average errors reported by Mantzouratos et al. [39]. The validation process

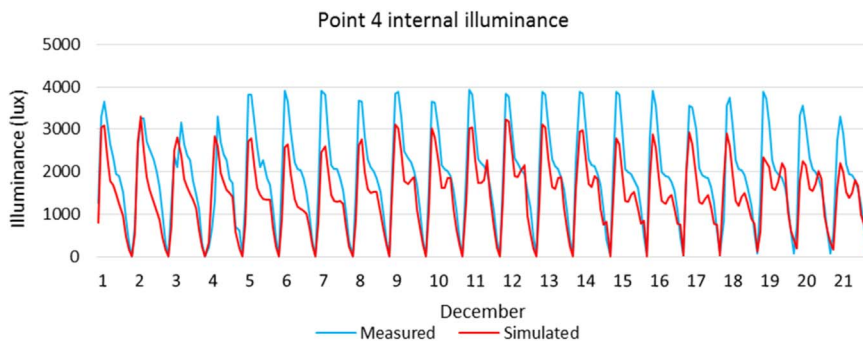


Fig. 9. Measured and simulated internal illuminance levels at point 4 in the test room in B4.



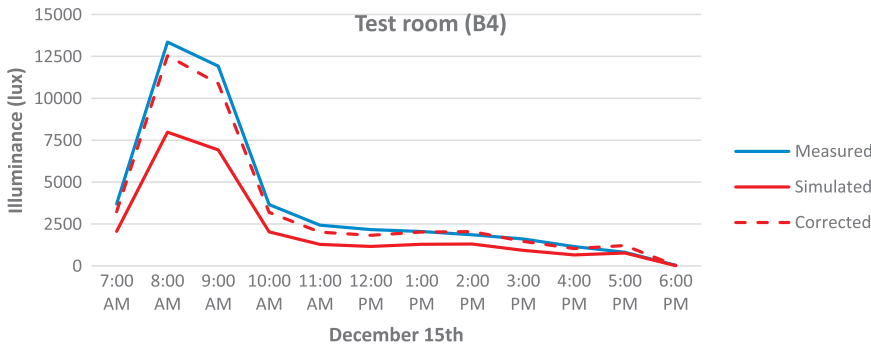


Fig. 10. Measured, simulated and corrected results for test room on December 15th.

Table 1

Acceptability limits for indoor operative temperatures and hours of thermal discomfort in B1 during the dry season (note: the values highlighted in red are the highest calculated on the examined days).

	Acceptability limits		B1			
	$T_{ovr}$	$T_{unr}$	$T_{omn}$	$T_{omax}$	$T_{omin}$	HTD
NOV	29.6	22.6	29.5	33.3	26.9	10
DEC	29.3	22.3	30.1	34.6	26.6	13
JAN	29.6	22.6	30.8	35.2	27.9	13
FEB	30.5	23.5	32.1	35.5	29.4	15
MAR	31.1	24.1	33.4	36.6	30.7	21
APR	30.6	23.6	32.3	35.7	29.9	20

Note: all values except HTD (hours) in °C

presented above was also used in establishing the discrepancy between the measured and simulated daylight levels during the rainy season (June 1st to June 30th). The correction factor representative of each season was then used to amend the values simulated in the selected cases (see Fig. 10).

### 3.2. Evaluation criteria

The 2003 national energy policy of Nigeria [40] proposes the development of building codes to encourage designers to adapt their buildings to the local climate in order to reduce energy consumption. However, neither the national energy policy nor the national building code published in 2006, provide guidelines specifically for Nigeria on thermal comfort that can assist designers in improving the environmental performance of their schemes [35,40,41]. Therefore, the ASHRAE standard 55–2010 adaptive model for thermal comfort in naturally ventilated buildings [42], which is applicable in tropical regions [18], was used to define the thermal comfort requirements in this study. The model is primarily based on the correlation between the operative temperature and the running mean outdoor temperature measured over no less than 7 days before the day in question. The upper ( $T_{over}$ ) and lower ( $T_{under}$ ) limits of the temperature range acceptable for

80% of occupants in the case study buildings are determined using the following equations [42]:

$$(1) \text{ Upper 80\% acceptability limit } (^{\circ}\text{C}) = 0.31x T_{pma} + 21.3$$

$$(2) \text{ Lower 80\% acceptability limit } (^{\circ}\text{C}) = 0.31x T_{pma} + 14.3$$

Where,  $T_{pma}$  is the prevailing mean outdoor air temperature which is the arithmetic mean of all mean daily outdoor air temperatures for 14 sequential days prior to the day in question.

An example of the acceptable indoor operative temperature limits along with hours of thermal discomfort calculated in B1 on the 15th day of each month in the dry season is shown in Table 1. The table shows the predicted mean ( $T_{omean}$ ), maximum ( $T_{omax}$ ) and minimum ( $T_{omin}$ ) operative temperatures in B1, in relation to the upper and lower limits of the acceptable temperature range for the 15th day of each month.

The models for assessing visual comfort are less standardised than that of thermal comfort. An approach similar to Sicurella et al.'s method [43] is adapted in this study for evaluating the Frequency of Visual Comfort (FVC), in which illuminance values across the working plane are predicted using grid points 0.5 m apart. The upper limit for preferred daylight illuminance used is 500 lx and the lower limit is 100 lx. These limits were established based on the Illuminating Engineering Society of North America (IESNA) lighting handbook [44]. However, it

Table 2

The mean, maximum, minimum illuminance levels and hours of visual discomfort in B1 on the 15 day of each month during the dry season [mentioned red highlighted values].

	Acceptability limits		B1			
	$E_{ovr}$	$E_{unr}$	$E_{imn}$	$E_{imax}$	$E_{imin}$	HVD
NOV	500	100	3219	5300	340	10
DEC	500	100	4320	7204	468	11
JAN	500	100	3826	6328	421	10
FEB	50	100	1926	3062	263	10
MAR	500	100	561	812	194	8
APR	500	100	445	772	189	3

Note: all values except HVD (hours) in Lux

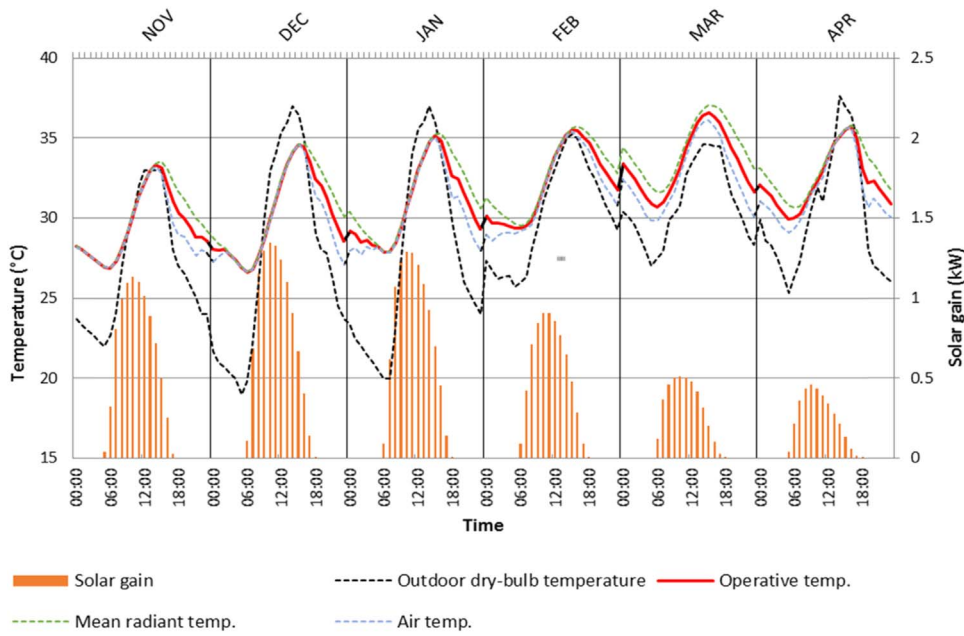


Fig. 11. The level of solar gain, the operative, mean radiant and air temperatures in B1 in comparison to the outdoor dry-bulb temperatures on the 15th of each month in the dry season.

is important to note that the upper limits of acceptability can be adjusted to a higher value depending on the actual use and type of activities taking place in a particular room. The conditions in the living/bedrooms in the selected dwellings were investigated for the 15th day of each month in terms of the *operative temperature*, the *average illuminance*, and the *number of hours* when the operative temperature/ illuminance were *below the lower limit or above the upper limit of the acceptability*.

Hours of visual discomfort calculated for example in B1 on the 15th day of each month in the dry season are shown in Table 2. The table shows the mean ( $E_{i\text{mean}}$ ), maximum ( $E_{i\text{max}}$ ), and minimum ( $E_{i\text{min}}$ ) illuminance levels predicted across the working plane in the room, as well as the calculated hours of visual discomfort (HVD) on the 15th of each month.

#### 4. Thermal performance analysis

The predicted hourly outdoor and indoor temperatures as well as

the hourly levels of solar gain received in the rooms on the days assessed are illustrated in Figs. 11–14. The results showed that the room in B1 will be thermally uncomfortable for an average of over 15 h a day (Table 1). On March 15th, when the outdoor dry-bulb temperature in Abuja is at its peak, the maximum operative temperature in the room could be as high as 36.6 °C exceeding the acceptable range by 5.5 °C and causing 21 h of thermal discomfort. A similar trend is seen on April 15th. The amount of solar radiation the room receives could exceed 1 kW on midday due to the southern orientation of the large window area (3.4 m<sup>2</sup>) and the lack of shading. Such high level of solar gain is the cause of overheating over the first four months of the dry season (Fig. 11). On the other hand, the higher altitude angles of the sun (78–89°) during March and April, leads to the ground and air above the ground being intensely heated as less sunlight is being dissipated by the atmosphere. Thus, despite the reduction in the levels of solar gain, the high outdoor temperatures around this period are mainly responsible for the high level of thermal discomfort predicted in the room towards the end of the season. Given that the outdoor temperature can be as low

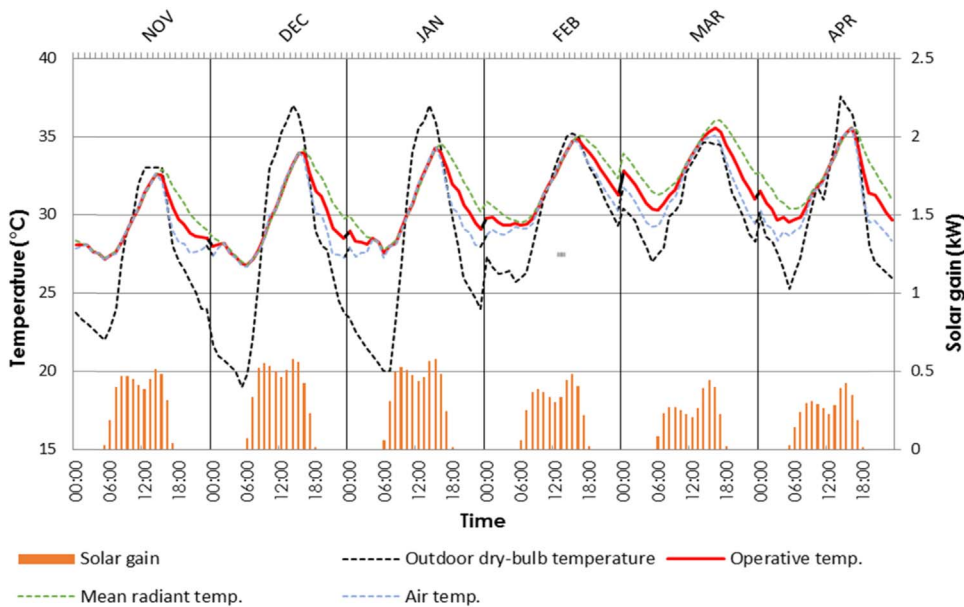


Fig. 12. The level of solar gain, the operative, mean radiant and air temperatures in B2 in comparison to the outdoor dry-bulb temperatures on the 15th of each month in the dry season.

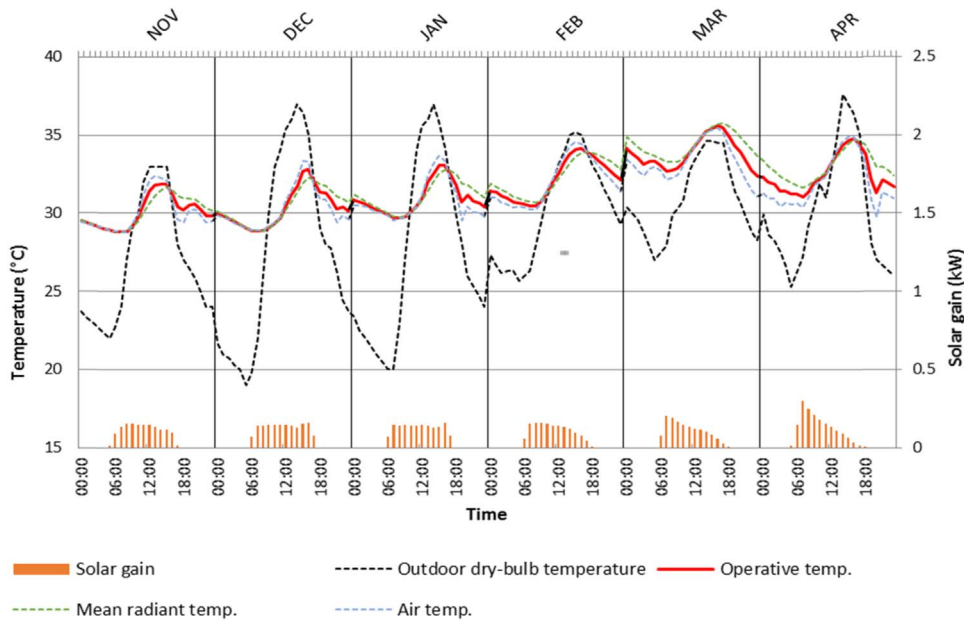


Fig. 13. The level of solar gain, the operative, mean radiant and air temperatures in B3 in comparison to the outdoor dry-bulb temperatures on the 15th of each month in the dry season.

as 19 °C during the early mornings, it would be beneficial to adopt a better night time cooling approach during this time of the year.

It is anticipated that the room in B2 will also be thermally uncomfortable for more than half of the time assessed. Yet, in comparison to the first case, there are on average two fewer hours of thermal discomfort calculated for the room in B2, including March 15th when the maximum operative temperature is also 1 °C lower. The relatively lower frequency of thermal discomfort in this case can be attributed to the lower levels of solar radiation reaching the room (Fig. 12) as compared to the B1 case. The room in B2 has a smaller total window area (2.6 m<sup>2</sup>) than the room in B1 (3.8 m<sup>2</sup>), thus it receives less sunlight even though one of the windows faces south. Also, the floor area of the room in B2 (9 m<sup>2</sup>) is much smaller than the B1 case (21 m<sup>2</sup>) hence the room in B2 has a larger window to floor area ratio. During the last two months of the dry season the cooling by cross ventilation (especially in the morning), which is made possible by the size, the position of the openings and the compact form of the room (Fig. 4), seems to be

advantageous for limiting thermal discomfort.

According to the results, the room in B3 will be thermally uncomfortable for an average of over 21 h on the days assessed. On March 15th the maximum operative temperature in the room is 1 °C lower than that of the room in B1 and the same as the B2 case, yet the room is expected to be thermally uncomfortable throughout the whole day. A similar trend is also predicted for January 15th and April 15th. As shown in Fig. 4, both external facades in the room in B3 are shaded by balconies that are over 1.3 m deep, thus the amount of solar radiation received through the windows is much lower (Fig. 13) than the amount received by the other two rooms. The average hourly levels of solar gain in the room are below 0.25 kW as compared to 0.55 kW in B1 and 0.33 kW in B2. However, the room is 9.5 m deep and the total openable window area is less than 5% of the total floor area, hence the cross ventilation is inadequate for achieving cooling in the room. This can be particularly problematic during the last half of the dry season when more cross ventilation is required to counter-act the overheating effect

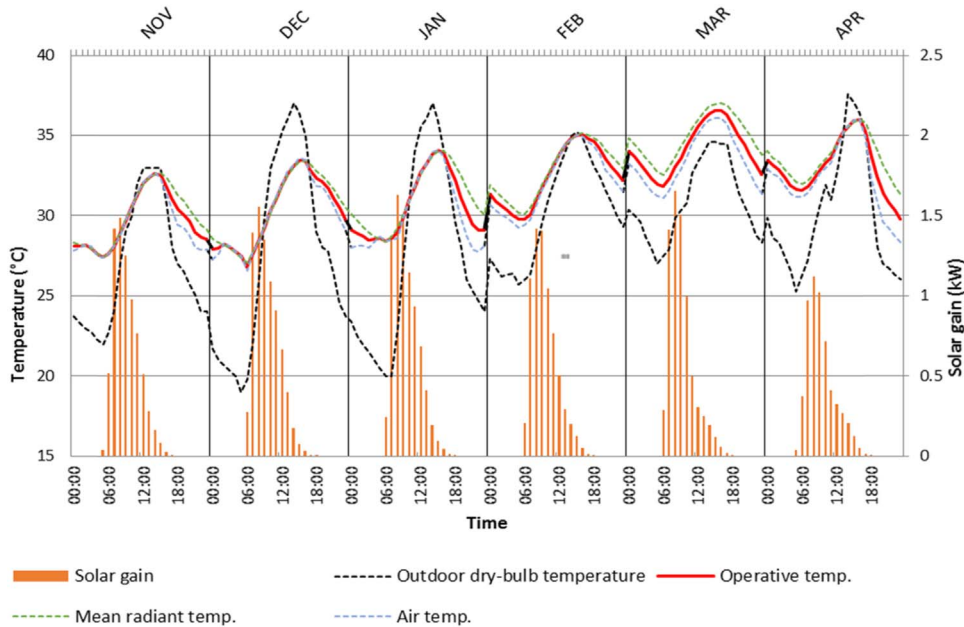


Fig. 14. The level of solar gain, the operative, mean radiant and air temperatures in B4 in comparison to the outdoor dry-bulb temperatures on the 15th of each month in the dry season.



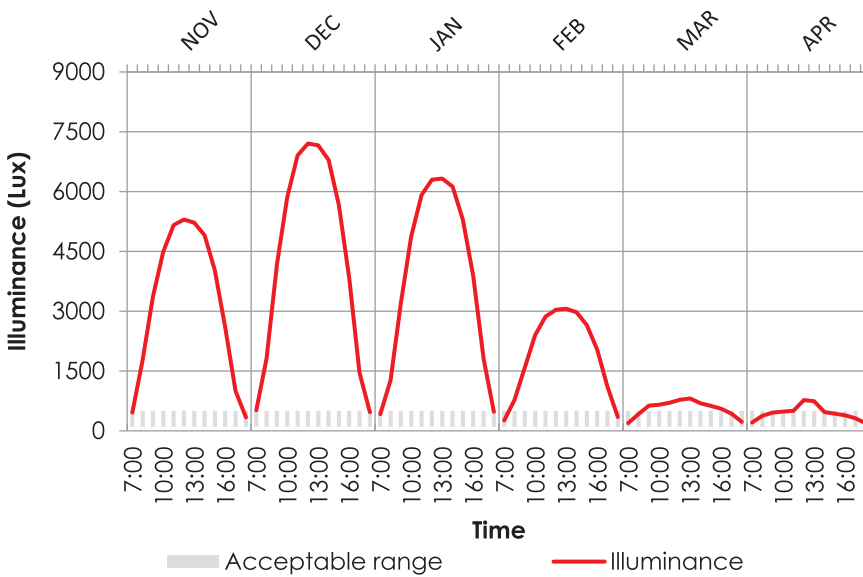


Fig. 15. The average daylight illuminance levels in B1 on the 15th of each month in the dry season.

of the outdoor air temperature.

The results also indicated that the room in B4 will be thermally uncomfortable for an average of 17 h during the examined season. Similar to the B3 case the room is thermally uncomfortable throughout March and April with a maximum operative temperature exceeding the acceptable range by 5 °C. Due to the easterly orientation of the main window area and in the absence of shading, the hourly levels of solar gain in the room are over 1.5 kW in the morning, causing the prediction of high frequency of thermal discomfort.

Overall the results indicated that the rooms in B1 and B2 are thermally uncomfortable for 64% and 56% of the period assessed, while the rooms in B3 and B4 are thermally uncomfortable for 88% and 72% of the same period. With the exception of the third case and the lack of sufficient ventilation (see discussion above), these figures suggested that occupants of the rooms are likely to experience constant levels of discomfort due to overheating caused by high amounts of direct solar gain and radiation for half of the year.

## 5. Visual performance analysis

Values of daylight illuminance predicted in the rooms on the 15th

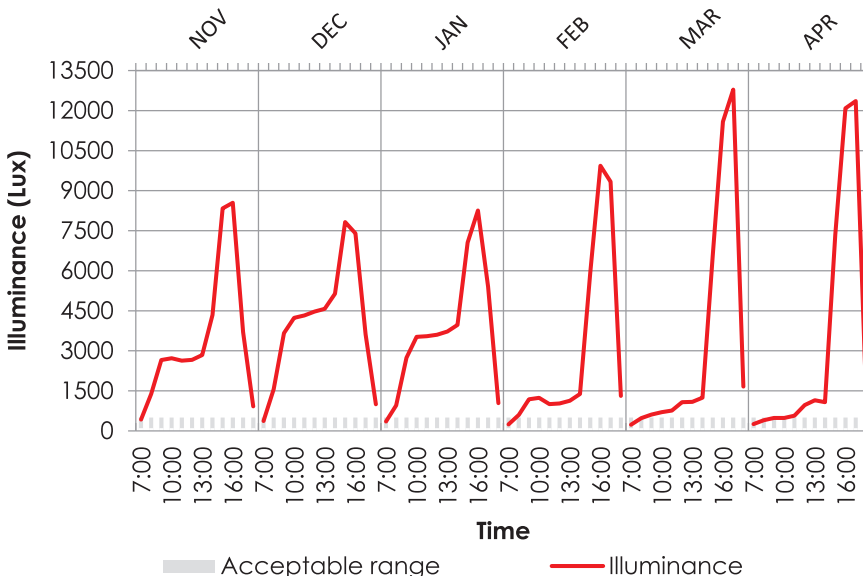


Fig. 16. The average daylight illuminance in B2 on the 15th of each month in the dry season.

day of each month in the dry season are illustrated in Figs. 15–18. Apart from April 15th, the results showed that the room in B1 will be visually uncomfortable for over 8 h on all the days assessed (Table 2). On December 15th the maximum average illuminance level predicted across the room is over 7200lux adding another 3 h of visual discomfort. This additional increase in the level of discomfort is the result of the southerly orientation of the main window area and the low angle of the sun (57°) around midday on December 15th (Fig. 15). On all the days assessed the illuminance level in the room is consistently above 1000lux around midday (Fig. 19), yet the level of illuminance predicted in the half of the room further away from the main window remains between 100-500lux all day long. Such contrast between the distribution of illuminance at the front and the rear can cause the occupants to perceive the areas further away from the window as insufficiently daylight. Hence, despite the high levels of daylight illuminance in the room, the occupants might still be inclined to waste energy to run artificial lighting.

Because of its compact configuration and the relatively larger fenestration ratio (as explained above) the visual performance of the room in B2 is more problematic than the first case. Based on the results, the room will be visually uncomfortable during most of the daytime

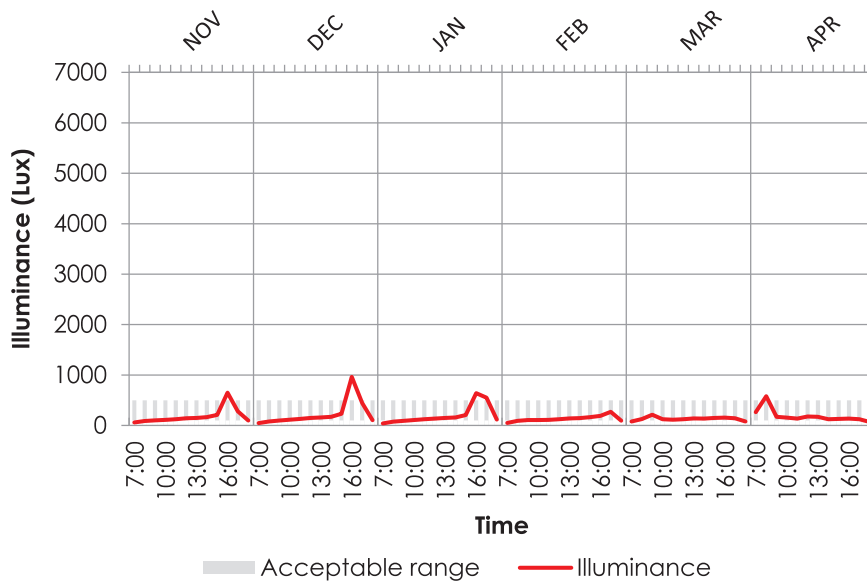


Fig. 17. The average daylight illuminance levels in B3 on the 15th of each month in the dry season.

hours (11 h of discomfort) during the first four months of the dry season. Only 3 fewer hours of visual discomfort are predicted on April 15th (due to the change in the altitude angle of the sun at the end of the season) and as with the previous case December 15th produces the maximum illuminance level received in the room (7280lux). The high amount of sunlight received in the room all day long is a result of the position of unshaded windows on the southern and western façade. The levels of illuminance in the room are greater when the sun is at a low angle in the west around sunset (Fig. 16). Whereas the occupants in the room are likely to experience discomfort due to such high illuminance levels, especially around sunset, this can be easily adjusted with the use of *affordable* simple internal shading devices. However, the addition of solar shading, which is usually more expensive, such as shutters, or louvres could be an attractive option here not only to limit the amount of sunlight in the afternoon, but also to improve the thermal environment in the room.

Unlike the other two rooms, the room in B3 will be visually uncomfortable for an average of about 3 h on the days assessed (Fig. 17). Although the highest illuminance level predicted (964lux) occurs on December 15th, the highest frequency of visual discomfort (5 h) occurs on January 15th. Nevertheless, these values are much lower than those

predicted for the previous two cases. In fact, unlike the previous cases, 1–2 h of visual discomfort predicted in the room are due to insufficient illuminance levels (Fig. 17). As with the thermal conditions, the room's depth, window sizes and shading influence the level of daylight available indoors. Only the areas by the window receive sufficient lighting even around midday (Fig. 19). This suggests that even when there is ample daylight outdoors, the room's occupants might require artificial lighting to carry out basic daily visual tasks.

Of the four cases examined, the room in B4 provides an interesting clear illustration of the impact of orientation on the quality of daylight indoors. According to Fig. 18 there is a constant variation in the illuminance levels received in the room throughout the course of each of the examined days. On all the days assessed, the difference in the average illuminance levels received in the first half of the day, and those received in the afternoon hours is over 5500 lx. Whereas the high amount of sunlight received in the room from the early morning until around midday is the results of the north-easterly and south-easterly orientation of its windows, the sun's movement towards the south and west in the afternoon significantly lowers the amount of radiation received indoors. Therefore, the average 6–7 h of visual discomfort predicted on the examined days occur in the morning. Since the internal

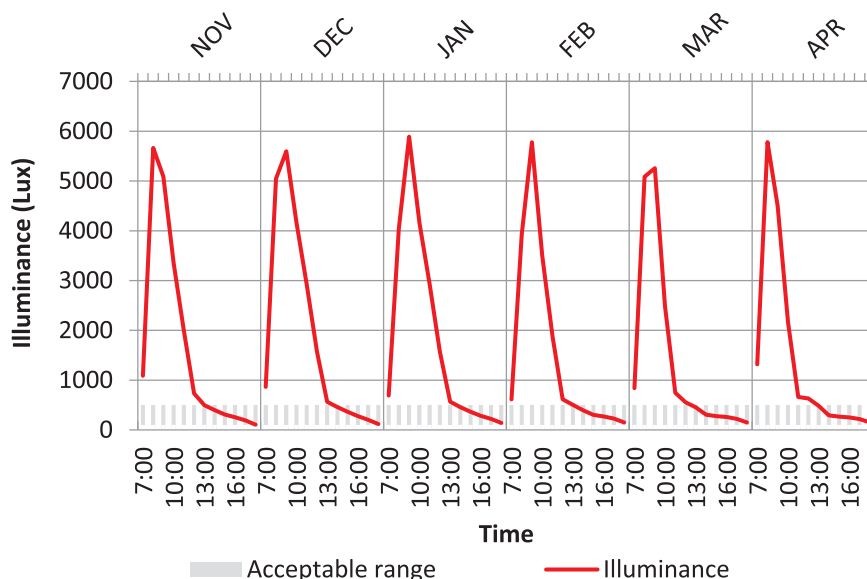


Fig. 18. The average daylight illuminance levels in B4 on the 15th of each month in the dry season.

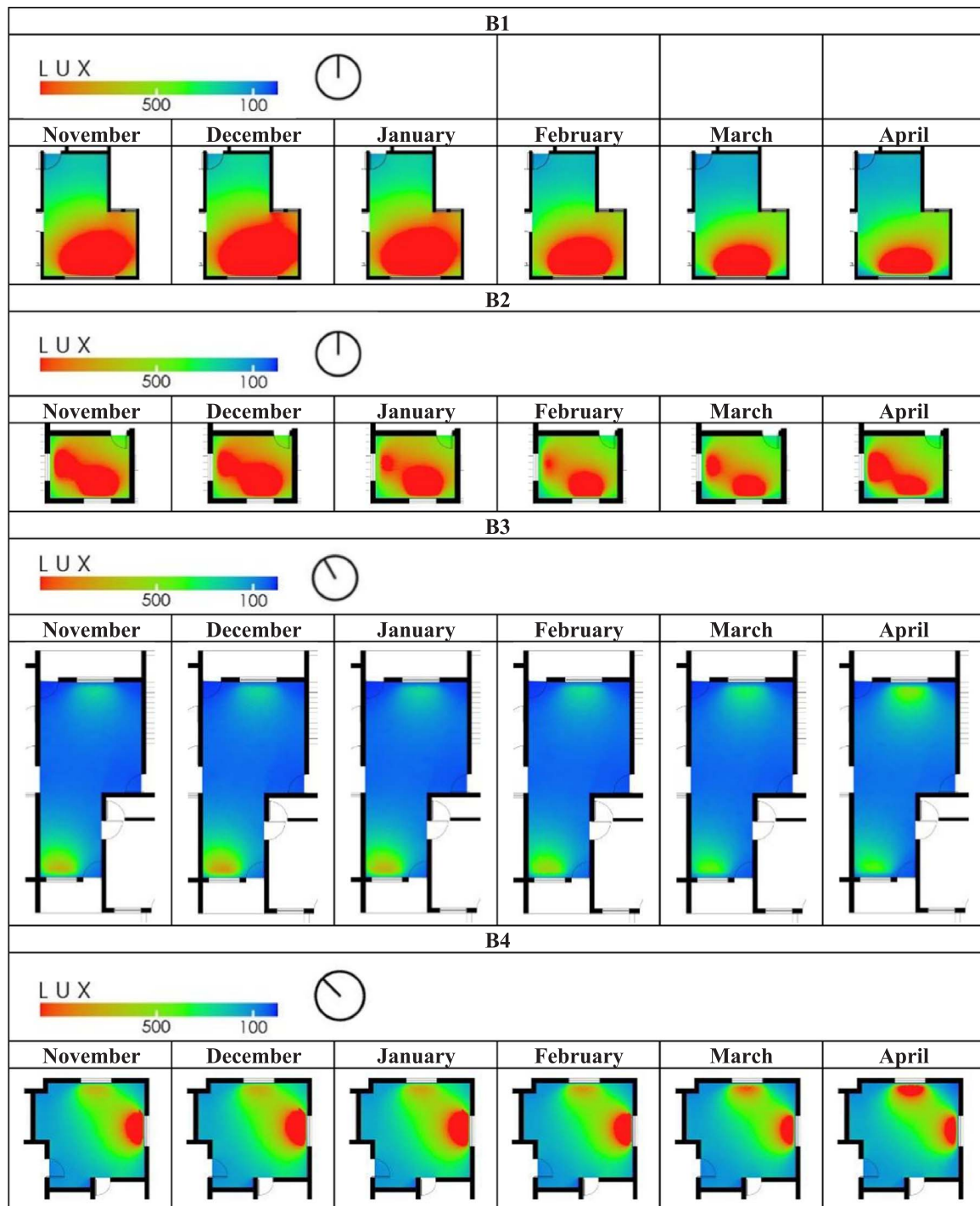


Fig. 19. Images of illuminance levels on working plane in the four rooms at 1 p.m. on the 15th of each month in the dry season.

visual conditions in the room are constantly uncomfortable in the early part of the day but well within the acceptable range in the afternoon hours, a combination of fixed external rigid screen(s) on the south-eastern orientation and movable internal shading devices seems necessary here to limit the unwanted direct radiation in the morning while allowing the occupants to adjust the diffuse radiation in the afternoon.

Overall the results suggested that the rooms in B1 and B2 are visually uncomfortable for about 72% and 86% of the period assessed, while the rooms in B3 and B4 are visually uncomfortable for 3% and 54% respectively. Once again, and with the exception of the room in B3, the occupants of these rooms are likely to experience high levels of

discomfort due to high illuminance. As expected, the more solar radiation reaching the main window areas, the higher the frequency of visual discomfort. Yet shading devices are not well utilised in most of the housing types in Abuja. Fig. 20 shows examples of residents' response to the high level of discomfort in their dwellings by either retrofitting simple shading elements over the windows or replacing the original glazing with tinted glass to reduce the visual transmittance of the windows by reflecting sunlight.

## 6. Analysis of impact of parametric variables

Evaluating the performance of the case studies in their current state





Fig. 20. Residential buildings in Abuja with improvised egg-crate shading, retrofitted overhangs and reflective glazing (2014).

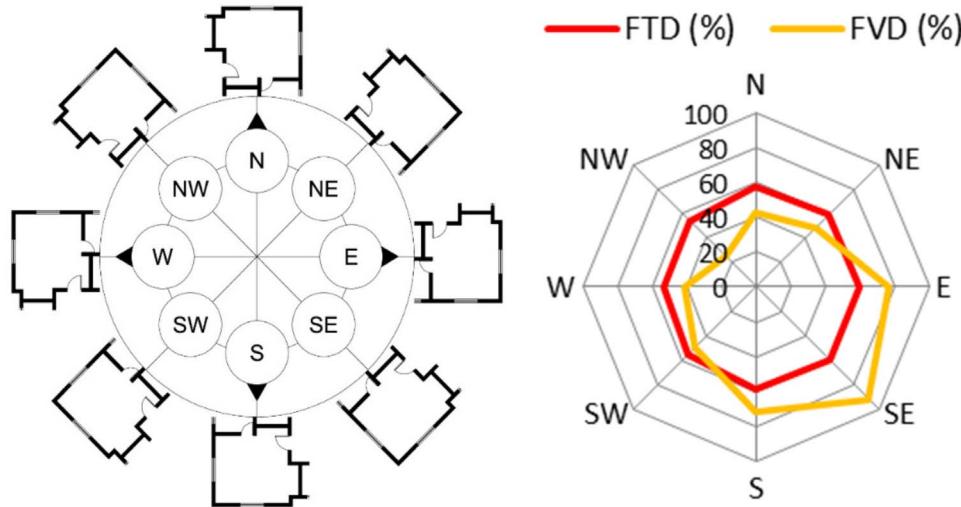


Fig. 21. (a\_left) Alternative orientations simulated for the room in B4, (b\_right) Impact of orientation on the average FTD and FVD in the room in B4 during the dry season.

has identified several design variables that could potentially improve the quality of the internal environment in Abuja's houses. Further analysis was carried out to examine whether the internal conditions of the room in B4 can be improved by adjusting its orientation and shading the windows.

### 6.1. Orientation

In the simulation tests for orientation reported in this section, the main window wall in the room in B4 was orientated north. The angles of rotation for the building were subsequently re-calibrated at 45° increments clockwise until a full circle was completed. Hence, 0°, 90°, 180° and 270° represent north, east, south and west respectively (Fig. 21\_a).

Fig. 21(b) illustrates the impact of the varying orientations on the frequency of thermal discomfort in the room. The results suggested that the room in B4 will have the lowest average FTD (53%) during the dry season if the room's main window wall area is orientated west (270°) or north-west (315°). Less solar radiation will reach the room with these two orientations reducing the frequency of thermal discomfort estimated. Similarly, adjusting the main façade to the south-west leads to the second lowest average FTD (55.6%). On the contrary, orientating

the room south-east (135°) and east (90°) will lead to the highest average FTD (59.7%), due to the increase in the level of solar radiation received indoors throughout the day. The average hourly level of solar gain in the room is almost doubled to 0.59 kW after changing the orientation from west to east. On average the results showed that adjusting the room orientation can result in 6.6% reduction in the frequency of thermal discomfort during the warmest period of the year.

Similarly, Fig. 21(b) shows that over the days assessed during the dry season, the room in B4 will have the lowest average FVD (25%) when the room is orientated north-west. Considering the above figures, these results suggested that orientating the room's primary window wall area north-west is likely to improve the thermal, as well as the visual performance of the room. Also, as with the thermal performance, orientating the room south-east increases the average FVD to 91.7%. Such high frequency value of discomfort occurs due to the *multilateral* fenestration design of the room with the main window facing south-east and the window on the adjacent side facing south-west. Thus, a high amount of direct sunlight reaches the room in the morning and afternoon on the days assessed. In addition, the results also suggested that orientating the room north-west could enhance the quality of the visual environment by improving daylight distribution indoors. The uniformity ratio, representing the minimum to the average illuminance,

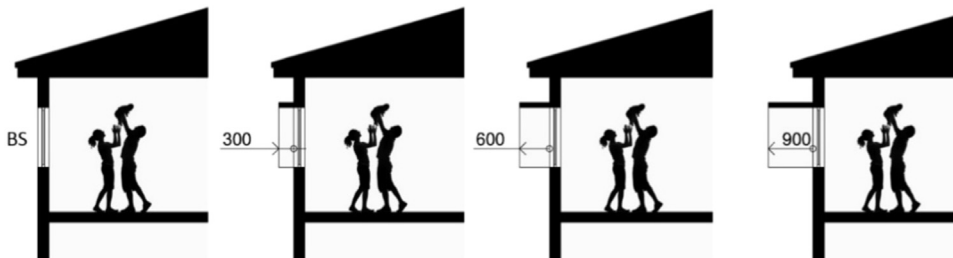


Fig. 22. Illustration of the existing façade design, as well as alternative designs with three different window shading sizes.

indicated a more even distribution of daylight for 20 additional hours during the dry season if the room faces north-west as opposed to the south-east.

## 6.2. Shading performance analysis

Rigid window shading elements, including fins, overhangs and egg-crates are among the main features in Nigerian contemporary architecture which emerged in the mid-twentieth century, known as tropical or African modernism [45]. However, as stated before, external fixed shading elements, which are essential for limiting the amount of solar radiation indoors, are not common in most of the housing prototypes surveyed in the city. As exemplified in B3, the appropriate configuration and size required for these types of shading elements to be effective thermally as well as visually ought to be considered. The room in B4 was therefore utilised to examine the impact of window shading. The geometry of the composite shading devices tested, which was partially based on residents' response illustrated in Fig. 20, consists of an overhang above the window and fins on either side of the window as shown in Fig. 22.

The results showed that during the dry season, the predicted FTD in the room is about 1%, 3% and 4% lower (approximately 156 h), with the 0.3 m (S1), 0.6 m (S2), and 0.9 m (S3) shading projections respectively. As shown in Fig. 23, strong negative correlations between the shading depth and the FTD ( $R = -0.9978$ ,  $p = 0.0022$  =  $-0.9978$ ,  $p = 0.0022$ ) were found, indicating that increasing the shading projection reduces the frequency of thermal discomfort. Despite the north-east and south-east orientation of the window walls in the room, the shading elements sufficiently limit the amount of solar radiation reaching the room in the morning. The average hourly levels of solar gain on the days assessed during the dry season is 0.34 kW lower in the room with S3. Furthermore, the predicted operative temperatures in the room with the addition of S3 are 0.5 °C to 0.8 °C lower compared to the base case (the room without shading).

Similarly, the addition of shading or screening elements S1, S2 and S3 reduced the average FVD in the room by about 14%, 19% and 29%, as compared to the base case, representing about one to three fewer hours of visual discomfort on the days assessed. Moreover, the uniformity ratio of natural light distribution in the room with S3 is above 0.3 for 84% of the time assessed, as opposite to 22% of the time without shading. These findings, and those obtained from the thermal analysis indicate that the presence of S3 is the most beneficial for reducing the frequency of thermal discomfort, as well as improving the quality of

daylighting in the room. However, given that the thermal performance of S2 and S3 are similar and S3 is slightly more effective than S2 in improving the quality of the visual environment indoors (Fig. 23), it seems sensible to say that S2 is the most cost-effective option of the three types examined.

## 7. Conclusions

Providing quality homes for low income groups is one of the key challenges facing Abuja today. Housing has been among the top priorities of the government's agenda, but the focus on mass production over the recent decades has negatively affected the quality of the dwellings in the city. The fact that residents living in houses constructed a few decades ago have resorted to retrofit with shading devices, tinted glass, and air-conditioning units suggests that there is a need to rethink the design of future housing rather than re-using what is already proven to be problematic. Another challenge facing Abuja today is its poor energy supply. Housing is already responsible for over half of all energy use in Nigeria and with the current increase in population, meeting occupants' needs may become even more difficult in the future. Despite these problems, there is a unique opportunity for Abuja to improve the standard of its housing development given that only about half of the original development scheme has been fully implemented.

The work reported here attempted to evaluate the environmental performance of four of Abuja's common housing types and examine opportunities for improving their occupants' comfort by optimising orientation and solar shading.

All of the rooms are expected to be thermally uncomfortable for more than half of the period assessed. The level of discomfort in the rooms can be attributed to a number of factors including, orientation, inadequate window sizing for cross ventilation and a lack of shading elements to limit overheating. Similarly, all the rooms with the exception of one are expected to experience several hours of high illuminance levels because of the exposure of openings to direct sunlight. The frequency of visual discomfort across the rooms examined ranged between 3% and 86%.

Examining the effects of orientation and window shading on the level of dis/comfort in one of the studied rooms suggested the following

- A 5% reduction in the frequency of thermal discomfort is possible by changing the room's orientation from north-east to north-west.
- Changing the orientation of the room to south-west could provide a 4% reduction in the frequency of visual discomfort, however orienting it north-west could yield a 29% reduction.
- The use of shading components can help reduce the frequency of thermal discomfort by up to 4% and visual discomfort by 29%.

Since orientating a building is mainly a design decision and has no financial implications on the occupants, early design choices made with regards to building orientation and performance ought to be considered in future housing developments. The current increase in the development of gated residential estates in the city has once again shifted designers' focus toward organising dwellings in ways that make optimum use of the land within the estate rather than investing in environmental improvement measures. In line with the above findings, designers should be encouraged to consider the layout of spaces within dwellings to limit the amount of solar radiation reaching the rooms that are frequently occupied. Also, given the shortage of housing supply in the region more analysis is needed to examine the possibility of maximizing the use of land while improving the quality of the housing indoors by optimising passive mode options.

Although the focus of this paper is not directly related to the financial benefits associated with effective utilisation of passive measures, the reader may find information concerning potential savings from adapting such approaches informative. As of 2017 the cost of 1 kilowatt hour of electricity for residential properties in Abuja ranges

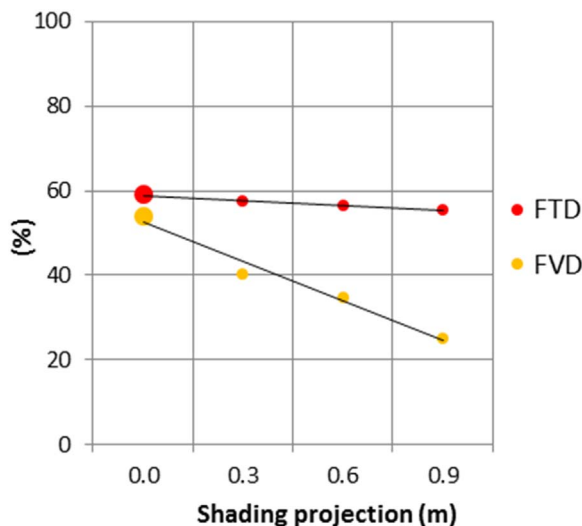


Fig. 23. Impact of window shading on the average FTD and FVD in the room in B4 during the dry season.

between ₦24.30–₦47.90 [46]. The energy consumption of air-conditioning units commonly used in Abuja's dwellings was estimated in 2007 at 0.078–0.16 kW per hour [47]. Thus, the cost of using one air conditioning unit for an hour is about ₦2–8. If the use of a shading element can help reduce the hours of thermal discomfort in a room during the warmest period in the city by nearly 13 days (156 h/12 h cooling a day), thereby negating the use of an air-conditioning unit can potentially save up to ₦1793. In addition, the initial cost of an air-conditioning unit in Nigeria could be as high as ₦205, 000, while a concrete fixed shading element with vertical and horizontal components around a 1.2 m × 1.2 m window could be built for less than ₦10000. Thus optimising shading to reduce the number and the frequency of using air-conditioning units in a household can contribute to a considerable amount of savings over time. Once again, more analysis is needed to quantify the impact of using different shading forms on both occupants' comfort and energy use.

On a more technical note, a Typical Meteorological Year (TMY) weather data from 2008 to 2011 for Abuja was compiled and utilised in performing the modelling reported in this paper. In some instances, the weather file does not accurately represent the conditions observed during the fieldwork, due to the lack of recorded data. The need for a more accurate metrological data is an important point to be considered in future research work concerning building performance in Nigeria.

## References

- [1] United Nations Department of Economic and Social Affairs, Statistics Division. World statistics pocketbook 2016 edition. New York: United Nations Publications; 2016.
- [2] Festus IA, Amos IO. Housing policy in Nigeria: an overview. *American International J Contemp Res* 2015;5(2):53–9.
- [3] Ezema IC, Opoko AP, Oluwatayo AA. De-carbonizing the Nigerian housing sector: the role of life cycle CO<sub>2</sub> assessment. *Int J Appl Environ Sci* 2016;11(1):325–49.
- [4] Morenikeji W, Umaru E, Pai H, Jiya S, Idowu O, Adeleye BM. Spatial analysis of housing quality in Nigeria. *Int J Sustain Built Environ* 2017.
- [5] Ojoko EO, Abubakar HO, Ojoko O, Ikpe EO. Sustainable housing development in Nigeria: prospects and challenges. *J Multidiscip Eng Sci Technol* 2016;3(5):4851–60.
- [6] Olugbenga TK, Jumah AA, Philips DA. The current and future challenges of electricity market in Nigeria in the face of deregulation process. *Afr J Eng Res* 2013;1(2):33–9.
- [7] International Energy Agency. Africa energy outlook – a focus on energy prospects in sub-Saharan Africa. Paris: International Energy Agency; 2014.
- [8] Otegbulu A. Economics of green design and environmental sustainability. *J Sustain Dev* 2011;4(2):240–8.
- [9] Climate change. mitigation of climate change. Contribution of working group III to the fifth assessment report of the Intergovernmental Panel on Climate Change. Cambridge: Cambridge University Press; 2014. p. 2014.
- [10] Nigerian Energy Support Programme [NESP]. The Nigerian energy sector: an overview with a special emphasis on renewable energy, energy efficiency and rural electrification. Abuja 2015<<https://www.giz.de/en/downloads/giz2015-en-nigerian-energy-sector.pdf>> [Accessed 21 March 2016].
- [11] Enaburekhan JS. An energy audit of purpose-built government housing units in Nigeria. *Cont J Eng Sci* 2007;1:1–6.
- [12] Irimiya Y, Humphrey IA, Aondover II. assessment of energy use pattern in residential buildings of Kano and Kaduna northern Nigeria. *Am J Eng Res* 2013;2(10):271–5.
- [13] Hussaini IU, Abdul Majid NH. Energy development in Nigeria and the need for strategic energy efficiency practice scheme for the residential building sector. *Manag Environ Qual: Int J* 2015;26(1):21–36.
- [14] Otegbulu AC, Osagie JU, Afe YO. The built environment perspective of climate change-A focus on household activities in Lagos Metropolis. *Sustain Dev* 2011;4(5):174–87.
- [15] Adaji MU, Watkins R, Adler G. Thermal comfort of occupants during the dry and rainy seasons in Abuja, Nigeria. In: Proceedings of 9th windsor conference: making comfort relevant, Cumberland Lodge, Windsor, UK.
- [16] Adunola AO, Ajibola K. Thermal comfort considerations and space use within residential buildings in Ibadan, Nigeria. In: Proceedings of the 7th windsor conference: the changing context of comfort in an unpredictable world, Windsor, UK; 2012.
- [17] Adunola AO. Evaluation of urban residential thermal comfort in relation to indoor and outdoor air temperatures in Ibadan, Nigeria. *Build Environ* 2014;75:190–205.
- [18] Akande OK, Adebamowo MA. Indoor thermal comfort for residential buildings in hot-dry climate of Nigeria. In: Proceedings of Conference: Adapting to Change: New Thinking on Comfort, Windsor, UK; 2010.
- [19] Akinwolemiwa O, Gwilliam J. Evaluating the Impact of vertical greening systems on thermal comfort in low income residences in Lagos, Nigeria. *Procedia Eng* 2015;118:420–33.
- [20] Suleiman ID. Housing issues in the context of the Abuja master plan review. In: Kalgo MSU, Ayileka O, editors. The review of the Abuja master plan. Ibadan: Fountain publications; 2001. p. 151–61.
- [21] Muhammad Z, Johar F, Sabri S, Jonathan ZU. A review of housing provision and the challenges of sustainable housing delivery in the federal capital territory Abuja, Nigeria. *J Teknol* 2015;77(14):23–31.
- [22] Atolagbe AMO. House-form and day-lighting: a spatial evaluation of residents' satisfaction in Ogbomoso, Nigeria. *J Geogr Reg Plan* 2013;6(4):103–9.
- [23] Koenigsberger OH, Ingersoll TG, Mayhew A, Szokolay SV. Manual of tropical housing and building. Harlow: Longman; 1974.
- [24] Agboola OP. Importance of climate to architectural designs in Nigeria. *J Environ Issues Agric Dev Ctries* 2011;3(1):15–28.
- [25] Ajibola K. Design for comfort in Nigeria—a bioclimatic approach. *Renew Energy* 2001;23(1):57–76.
- [26] Lawal AF, Akinbami JF, Akinpade JA. Assessing effectiveness of utilization of passive design parameters on active energy consumption in public buildings in warm-humid climate. *J Civil Eng Constr Technol* 2012;3(4):140–7.
- [27] Ochedi ET, Taki A, Painter B. Low Cost Approach to energy efficient buildings in Nigeria: a review of passive design options. In: Proceedings of Joint International Conference; 2015.
- [28] Isah AD, Khan TH, Ahmed AS. Discovering design implications of public housing adjustment benefits in Nigeria. Paper presented at the 3rd International Congress on Interdisciplinary Behavior and Social Sciences, Bali; 2014.
- [29] Ademiluyi IA. Public housing delivery strategies in Nigeria: a historical perspective of policies and programmes. *J Sustain Dev Afr* 2010;12(6):153–61.
- [30] Federal Capital Development Authority [FCDA]. The master plan for Abuja: the new federal capital of Nigeria. Lagos: FCDA; 1979.
- [31] Ukoha OM, Beamish JO. Predictors of housing satisfaction in Abuja, Nigeria. *Hous Soc* 1996;23(3):24–46.
- [32] Eludoyin OM. Some aspects of physical climatology in Nigeria. *Interdiscip Environ Rev* 2013;14(2):150–85.
- [33] Osuke CO, Uzendu P, Ogbonna ID. Study and evaluation of solar energy variation in Nigeria. *Int J Emerg Technol Adv Eng* 2013;3(6):501–5.
- [34] Kim G, Lim HS, Lim TS, Schaefer L, Kim JT. Comparative advantage of an exterior shading device in thermal performance for residential buildings. *Energy Build* 2012;46:105–11.
- [35] Federal Republic of Nigeria. National building code. Durban: LexisNexis; 2006.
- [36] Hiscock PD. Measuring reflectance; 2011. <<http://www.ee.ryerson.ca/~phiscock/astronomy/light-pollution/reflectance-apparatus.pdf>>. [Accessed 9 November 2015].
- [37] Kim S, Chung S. Daylighting simulation as an architectural design process in museums installed with toplights. *Build Environ* 2011;46:210–22.
- [38] Al-Maiyah S, Elkadi H. Study on the visual performance of a traditional residential neighborhood in old Cairo. *J Urban Technol* 2012;19(4):59–86.
- [39] Mantzouratos N, Gardiklis D, Dedoussis V, Kerhoulas P. Concise exterior lighting simulation methodology. *Build Res Inf* 2004;32(1):42–7.
- [40] Energy Commission of Nigeria. National energy policy. Abuja: Energy Commission of Nigeria; 2003.
- [41] Oyedepo SO. Towards achieving energy for sustainable development in Nigeria. *Renew Sustain Energy Rev* 2014;34:255–72.
- [42] American Society of Heating Refrigerating and Air Conditioning Engineers. Thermal environmental conditions for human occupancy. Atlanta: American Society of Heating, Refrigerating and Air Conditioning Engineers; 2013.
- [43] Sicurella F, Evola G, Wurtz E. A statistical approach for the evaluation of thermal and visual comfort in free-running buildings. *Energy Build* 2012;47:402–10.
- [44] Rea MS, (Ed.), The IESNA Lighting Handbook: Reference & Application, Illuminating Engineering Society of North America, New York, 2000.
- [45] Uduku O. Modernist architecture and 'the tropical' in West Africa: the tropical architecture movement in West Africa, 1948–1970. *Habitat Int* 2006;30(3):396–411.
- [46] Nigerian Electricity Regulation Commission. Abuja DISCO tariffs N/kWh <<http://www.nercng.org/nercdocs/tariffs/abuja-tariff.pdf>> [Accessed 10 June 2017].
- [47] Enaburekhan JS. An energy audit of purpose-built government housing units in Nigeria. *Cont J Eng Sci* 2007;1:1–6.