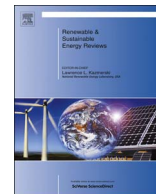




Contents lists available at ScienceDirect

## Renewable and Sustainable Energy Reviews

journal homepage: [www.elsevier.com/locate/rser](http://www.elsevier.com/locate/rser)The effects of electricity consumption, economic growth, financial development and foreign direct investment on CO<sub>2</sub> emissions in KuwaitMohammad Salahuddin<sup>a,b,\*</sup>, Khorshed Alam<sup>b</sup>, Ilhan Ozturk<sup>c</sup>, Kazi Sohag<sup>d</sup><sup>a</sup> Balsillie School of International Affairs, Wilfrid Laurier University, Waterloo, ON, Canada N2L 6C2<sup>b</sup> School of Commerce, University of Southern Queensland, Toowoomba QLD 4350, Australia<sup>c</sup> Faculty of Economics and Administrative Sciences, Cag University, Mersin, Turkey<sup>d</sup> Institute of Climate Change (IPCI), Faculty of Social Science and Humanities, Universiti Kebangsaan Malaysia, Malaysia

## ARTICLE INFO

## JEL codes:

Q32

Q43

## Keywords:

Cointegration

CO<sub>2</sub> emissions

Economic growth

Energy consumption

GCC countries

Granger causality

## ABSTRACT

This study examined the empirical effects of economic growth, electricity consumption, foreign direct investment (FDI), and financial development on carbon dioxide (CO<sub>2</sub>) emissions in Kuwait using time series data for the period 1980–2013. To achieve this goal, we applied the autoregressive distributed lag (ARDL) bounds testing approach and found that cointegration exists among the series. Findings indicate that economic growth, electricity consumption, and FDI stimulate CO<sub>2</sub> emissions in both the short and long run. The VECM Granger causality analysis revealed that FDI, economic growth, and electricity consumption strongly Granger-cause CO<sub>2</sub> emissions. Based on these findings, the study recommends that Kuwait reduce emissions by expanding its existing Carbon Capture, Utilization, and Storage plants; capitalizing on its vast solar and wind energy; reducing high subsidies of the residential electricity scheme; and aggressively investing in energy research to build expertise for achieving electricity generation efficiency.

## 1. Introduction

Kuwait is a small open economy, rich in hydrocarbon resources with 9% of the world's reserves of oil and gas. Because of a growing economy, it has huge energy demands and energy requirements, mostly for electricity generation. Total electricity consumption has increased significantly over the past decade, from 17.66 TWh in 1995–32.94 TWh in 2005–50.57 TWh in 2015 [20]. The increasing domestic demand for energy, especially for electricity, may jeopardize Kuwait in terms of its future energy security. At 69.5 Mt of carbon dioxide (CO<sub>2</sub>) emissions per capita, Kuwait is considered one of the largest per capita CO<sub>2</sub> emitters in the world [28]. A growing economy along with an increasingly wealthy population and harsh weather conditions are driving domestic electricity demand. As such, the sustainability of the energy systems in Kuwait is likely to be vulnerable if the anticipated energy crisis – in particular, the electricity crisis and CO<sub>2</sub> emissions issues – are not addressed appropriately.

Kuwait's primary energy demand has been growing at an annual average rate of 5–7% [51]. Although economic growth is always accompanied by increasing domestic demand for energy, this is not the case with Kuwait. The country has experienced very high rates of per capita electricity consumption, which has already surpassed the

average level of major industrial countries [28]. The most important reason for this staggering increase is the government's electricity and water subsidy program [19]. The government has been providing subsidies of more than 95% on electricity costs since 1996, leading to fast-growing and wasteful consumption. In addition, lack of administrative efficiency is responsible for failure to reach electricity bill collection targets, resulting in irresponsible consumption of electricity. Although the public policy aims to maximize social welfare by providing huge subsidies, such policy is not supported by energy conservation efforts, causing inefficient allocation of natural resources. The recent growth in energy demand, and electricity demand in particular, has generated significant environmental concerns, particularly CO<sub>2</sub> emissions [15].

In light of the above environmental adversity, this study investigates the long-run effects of electricity consumption, economic growth, foreign direct investment (FDI), and financial development on CO<sub>2</sub> emissions for Kuwait for the period 1980–2013. Although numerous time series and panel studies have examined such associations (e.g., [13,32,36,39,54]), to the best of the authors' knowledge, no study has yet been undertaken to determine such causal relationships in the context of Kuwait, which is potentially a very important country for such investigation. The current study is an attempt to fill this gap.

\* Correspondence to: 1810-10 Teesdale Place, Scarborough, Toronto, ON, Canada M1L 1K9.

E-mail addresses: [salahuddin.mohammad@usq.edu.au](mailto:salahuddin.mohammad@usq.edu.au), [msalahuddin@wlu.ca](mailto:msalahuddin@wlu.ca) (M. Salahuddin), [Khorshed.Alam@usq.edu.au](mailto:Khorshed.Alam@usq.edu.au) (K. Alam), [ilhanozturk@cag.edu.tr](mailto:ilhanozturk@cag.edu.tr) (I. Ozturk), [sohagkaziewu@gmail.com](mailto:sohagkaziewu@gmail.com) (K. Sohag).<http://dx.doi.org/10.1016/j.rser.2017.06.009>

Received 28 March 2016; Received in revised form 10 February 2017; Accepted 1 June 2017

1364-0321/ © 2017 Elsevier Ltd. All rights reserved.

The rest of this paper is structured as follows: [Section 2](#) discusses the empirical evidence from the literature; [Section 3](#) is devoted to methodology and data; [Section 4](#) discusses the results; and conclusions and policy implications are covered in [Section 5](#).

## 2. Literature review

### 2.1. CO<sub>2</sub> emissions, energy consumption, and economic growth

To date, a significant volume of literature has evolved regarding the association between economic growth, energy consumption, and environmental pollution. Numerous time series and panel data studies have examined their relationship, and some have examined the validity of the environmental Kuznet curve (EKC) hypothesis. Ouyang and Lin [38] analyzed the factors responsible for CO<sub>2</sub> emissions in China and Japan using cointegration analysis. Their findings indicated that China and Japan differ significantly in terms of per capita CO<sub>2</sub> emissions, energy structure, and energy intensity, although they experienced similar characteristics of stable growth during their urbanization process. The future CO<sub>2</sub> emissions reduction potential of China is determined through scenario analysis. The authors concluded that China can take lessons from Japan's experiences in reducing energy intensity for its low-carbon planning and transition.

Behera and Dash [14] estimated two models for a panel of 17 South and South-East Asian countries (SSEA) for the period 1980–2012. The first panel examined the empirical association between primary energy consumption, urbanization, FDI, and CO<sub>2</sub> emissions, and the second panel examined the empirical association between fossil fuel consumption, urbanization, FDI, and CO<sub>2</sub> emissions. The authors subsampled these countries into three income categories: low-, middle- and high-income countries. The study found a cointegrating relationship among the variables for all countries for the first panel, while such association existed only for the middle-income countries for the second panel.

Ouyang and Lin [37], in another investigation, found that industrial activity causes a rise in CO<sub>2</sub> emissions while carbon mix and carbon intensity reduce CO<sub>2</sub> emissions. They found that long-run significant relationships exist between CO<sub>2</sub> emissions and energy consumption, industrial value added, labor productivity and fossil fuel consumption. Saboori et al. [52] investigated the bidirectional long-term relationship between energy consumption, CO<sub>2</sub> emissions, and economic growth in the road transport sector of Organization of Economic Cooperation and Development (OECD) countries. Using the Fully Modified Ordinary Least Squares (FMOLS) method, the study confirmed that there are positive significant bidirectional relationships between CO<sub>2</sub> emissions and economic growth, road sector energy consumption and economic growth, and CO<sub>2</sub> emissions and road sector energy consumption. Their findings further indicated that most of these CO<sub>2</sub> emissions occur due to energy consumption. The study emphasized the need for long-term policies aimed at enhancing energy efficiency and shifting to alternative energy options such as biofuel, renewable sources, and nuclear.

Lin and Ouyang [31] examined the determinants of energy demand in China using panel cointegration modeling. The authors also applied scenario analysis to forecast China's energy demand. China and the USA were found to go through similar characteristics during their rapid urbanization process. The study concluded that China's energy sustainability largely depends on energy price reforms. In another study, [32] applied the Log Mean Divisia Index (LMDI) method to assess the emissions reduction potential in the non-metallic mineral products industry of China. The study found that industrial activity contributes most towards CO<sub>2</sub> emissions in China, while energy intensity reduces it. Ouyang and Lin [36], in a further empirical exercise, projected the future electricity intensity and conservation potential in the building materials industry of China. They estimated the long-run equilibrium relationship between electricity intensity and factors including technology, power tariff, enterprise scale, and value added per worker. Findings

indicated that aggressive energy conservation policy would potentially reduce CO<sub>2</sub> emissions caused by huge electricity consumption.

Al-Mulali [6] conducted a study involving seven regions: East Asia–Pacific, Eastern Europe–Central Asia, Latin America–Caribbean, Middle East–North Africa, South Asia, Sub-Saharan Africa, and Western Europe. They estimated the relationship between urbanization, energy consumption, and CO<sub>2</sub> emissions. The results provided support for a positive long-run relationship between the variables in 84% of the countries. The findings for the other 16% of the countries were mixed: some demonstrated a negative relationship while others did not demonstrate any relationship.

Stable long-term relationships were found for France [7] and Malaysia [8]. In the former, a unidirectional causality was observed running from economic growth to energy consumption and CO<sub>2</sub> emissions in the long run. In the latter, GDP per capita stimulates CO<sub>2</sub> emissions and energy consumption. Ozturk and Acaravci (2010) studied the relationship between income, energy consumption, CO<sub>2</sub> emissions, and employment in Turkey. The application of the Toda–Yamamoto (TY) Granger causality test showed that neither CO<sub>2</sub> emissions per capita nor energy consumption per capita cause real GDP growth per capita. Ghosh [22] confirmed the absence of any causal association between CO<sub>2</sub> emissions and economic growth in India in the long run. Pao and Tsai [46] examined the dynamic relationship between pollutant emissions, energy consumption, and energy output for Brazil. They found that in the long run, emissions appear to be output-inelastic and energy-elastic. Pao et al. (2011) applied the cointegration technique and conducted a causality test to examine the dynamic relationships between CO<sub>2</sub> emissions, energy use, and real output for Russia for the period 1990–2007. They did not find any support in favor of the EKC hypothesis; another more recent study [40] also did not find any support in favor of this hypothesis.

Adom et al. [1] investigated the short- and long-term equilibrium relationship between CO<sub>2</sub> emissions, economic growth, technical efficiency, and industrial structure for Ghana, Senegal, and Morocco. Their findings suggested a multiple long-term relationship between the variables for Ghana and Senegal but only a one-way long-term relationship for Morocco. The TY Granger causality test showed that CO<sub>2</sub> emissions did not Granger-cause in Senegal but they were a limiting factor for Ghana and Morocco.

Begum et al. [13] investigated the dynamic impacts of GDP growth, energy consumption, and population growth on CO<sub>2</sub> emissions for Malaysia for the period 1970–2009. The results from this empirical analysis indicated that CO<sub>2</sub> emissions per capita declined with increased GDP growth per capita in the 1970–1980 period, but for the 1980–2009 period, an increase in GDP per capita led to a rise in CO<sub>2</sub> emissions.

Ghosh and Kanjilal [23] conducted an empirical analysis for India using data for the period 1971–2008. They employed threshold cointegration tests complemented by the Autoregressive Distributed Lag (ARDL) model and the Johansen and Juselius maximum likelihood procedures. The results indicated a long-run cointegrating relationship between the variables in the presence of structural breaks. A unidirectional causal link running from energy consumption to economic activity and from economic activity to urbanization was also observed. Salahuddin et al. [57] tested the robustness of the association between electricity consumption, CO<sub>2</sub> emissions, economic growth, and financial development for a panel of Gulf Cooperation Council (GCC) countries. A battery of econometric techniques to assess the robustness found the long-term association among the variables to be robust across different econometric specifications. They concluded that electricity consumption and economic growth stimulate CO<sub>2</sub> emissions but financial development reduces it.

Salahuddin and Gow [56] examined the association between economic growth, energy consumption, and CO<sub>2</sub> emissions using panel data for GCC countries for the period 1980–2012. They also calculated the decoupling trend for these countries. Their findings indicated that

despite some relative decoupling, energy consumption stimulates CO<sub>2</sub> emissions while economic growth increases energy consumption. Also, a bidirectional causal link was observed between energy consumption and CO<sub>2</sub> emissions. The study further noted a unidirectional causality running from economic growth to energy consumption.

Al-Mamun et al. [5] estimated the relationship between economic growth and CO<sub>2</sub> emissions using panel data for 136 countries for the period 1980–2009. Following World Bank country classifications, they divided the sample countries into five distinct groups: lower-income countries; lower middle-income countries; upper middle-income countries; high-income OECD countries; and high-income non-OECD countries. The study found the presence of EKC across all regions except for high-income OECD countries. The research also found that high-income OECD countries cause more CO<sub>2</sub> emissions than other countries, which was in contrast to general expectations. The authors also noted that industrial value addition contributes to increased pollution; and it was observed across all regions in the study that population growth increases CO<sub>2</sub> emissions and economic liberalization reduces CO<sub>2</sub> emissions.

Saboori and Sulaiman [53] examined the empirical link between energy consumption, CO<sub>2</sub> emissions, and economic growth for selected South-East Asian nations. They found a significant positive relationship between CO<sub>2</sub> emissions and energy consumption, both in the short and long run. Further, the study found evidence in support of the EKC hypothesis for Singapore and Thailand, and also a long-run bidirectional causal link between CO<sub>2</sub> emissions and economic growth in these countries. Wang et al. (2012) examined the relationship between CO<sub>2</sub> emissions and economic growth for a panel of 98 countries to find a threshold effect. The results did not corroborate the EKC hypothesis.

Sahzabi et al. [54] investigated the relationship between energy consumption and CO<sub>2</sub> emissions for Iran and found a strong positive correlation. Belke et al. [16] found that financial development dominates the long-run relationship between energy consumption and real GDP in OECD countries. Pao et al. [45], in a study on BRICS (Brazil, Russia, India, China, and South Africa) countries, recommended managing both energy demand and FDI and increasing investment in energy supply and energy efficiency to reduce CO<sub>2</sub> emissions.

Apergis and Payne [9] investigated six Central American economies. It was evident that energy consumption is positively linked with CO<sub>2</sub> emissions. Lean and Smyth (2010) concluded similarly for ASEAN countries. Empirical evidence from Narayan and Narayan [34] also supported the EKC hypothesis for 43 low-income countries. In addition, Lean and Smyth (2010) noted long-term causality running from energy consumption and CO<sub>2</sub> emissions to economic growth in ASEAN countries. However, Apergis and Payne (2010a,b) found that energy consumption and economic growth cause CO<sub>2</sub> emissions, while energy consumption and economic growth also cause each other.

Salahuddin and Alam [55] examined the effects of Internet usage and economic growth on electricity consumption for Australia for the period 1985–2012. The results indicated a significant positive association of Internet use and economic growth with electricity consumption in the long term. However, the short-term relationship among these variables was not found to be significant. Ozturk and Al-Mulali [41] used a multivariate framework to analyze panel data to determine the effect of natural gas consumption on economic growth for GCC countries for the period 1980–2012. They found a cointegrating relationship between natural gas consumption and economic growth for these countries. They also found a significant long-term association between natural gas consumption and GDP growth in the region.

Sohag et al. [61] assessed the effects of technological innovation on energy use in Malaysia. They analyzed annual data for the period 1985–2012 and concluded that an increase in GDP causes an increase in energy demand, and trade openness increases domestic energy use in the long term. The empirical findings indicated that technological innovation contributes significantly towards reduced energy use and improved energy efficiency. Hasanov et al. [27] reviewed the energy–

growth nexus for 10 oil-exporting countries. The findings indicated that a growth hypothesis dominates in the primary energy consumption–growth nexus while a neutrality hypothesis dominates in the residential electricity consumption–growth nexus for these countries.

Ozturk and Acaravci [42] examined the long-run causal association between economic growth, CO<sub>2</sub> emissions, energy consumption, the foreign trade ratio, and the employment ratio for Cyprus and Malta for the period 1980–2006. They found a long-run relationship and a subsequent causal link for Malta only. Furuoka [21] investigated the empirical association between renewable and non-renewable electricity consumption and economic development for three transition economies – Estonia, Latvia, and Lithuania – for the period 1992–2011. They found support for the conservation hypothesis, which means that economic development causes increased use of renewable electricity, but not vice versa. Ozturk and Acaravci [43] addressed short- and long-term causality issues between electricity consumption and economic growth in 11 Middle East and North African (MENA) countries using annual data for the period 1971–2006. They did not find any positive association between electricity consumption and economic growth for most of these countries.

The results achieved by Cowan et al. [18] supported the neutrality hypothesis for Brazil, India, and China, indicating no link between electricity consumption and economic growth. However, regarding a GDP–CO<sub>2</sub> emissions nexus, a feedback hypothesis was found for Russia. Also, a one-way Granger causality test running from GDP to CO<sub>2</sub> emissions and a reverse relationship were found for Brazil. Sbia et al. [58] found a positive relationship between economic growth and energy consumption. The authors also determined that CO<sub>2</sub> emissions have a negative impact on energy demand in a time series study involving the United Arab Emirates (UAE). Alkhatlan and Javid [4] found a positive relationship between CO<sub>2</sub> emissions and economic growth in the case of Saudi Arabia.

Solarin and Shahbaz et al. [60] found a bidirectional causal link between electricity consumption and economic growth in Angola. Burnett et al. [17] concluded that economic growth drives the intensity of CO<sub>2</sub> emissions in the USA rather than the CO<sub>2</sub> emissions themselves. Alves and Moutinho (2013) examined the intensity of CO<sub>2</sub> emissions in Portugal using a ‘complete decomposition’ technique. Results showed that the intensity declined significantly during the 1996–2009 period. It is argued that the replacement of fossil fuels with lower-polluting fuels was the key reason for this success.

Acaravci and Ozturk (2012) investigated the short- and long-run causality between electricity consumption and economic growth in Turkey for the period 1968–2006. They found that electricity consumption stimulates economic growth in Turkey. The role of electricity in enhancing economic growth was highlighted in the study. Pao et al. [44] undertook an empirical exercise to forecast CO<sub>2</sub> emissions, energy consumption, and economic growth in China. A long-run relationship between the variables was observed. CO<sub>2</sub> emissions were found to be output-inelastic, while energy consumption is output-elastic.

He et al. used a scenario analysis approach and projected China's possible CO<sub>2</sub> emissions for the period 2010–2020. Lotfalipour et al. [33] investigated the causal link among economic growth, CO<sub>2</sub> emissions, and fossil fuel consumption in Iran. Their empirical findings supported unidirectional causal linkages running from GDP and energy consumption to CO<sub>2</sub> emissions. No causal link was found between fossil fuel consumption and CO<sub>2</sub> emissions in the long run. The results further indicated that gas consumption rather than CO<sub>2</sub> emissions, energy consumption, and fossil fuel consumption lead to economic growth. Based on the findings, they recommended China should pursue a low-carbon industrialization model for the sustainability of its economy. Soytaş and Sari (2009) investigated the relationship between CO<sub>2</sub> emissions, income, energy, and total employment in five OPEC countries, including Saudi Arabia. They found a cointegrating relationship between the variables.

Arouri et al. [10], in a study of 12 MENA countries, showed that energy consumption has a positive significant impact on CO<sub>2</sub> emissions and that real GDP demonstrates a quadratic relationship with CO<sub>2</sub> emissions. Omri et al. [35] resolved that there is a bidirectional causal link between energy consumption and economic growth in MENA countries. Li et al. [30] showed that there is a positive long-term relationship between real GDP per capita and energy consumption variables. Liao and Cao (2013), for a panel study of 132 countries, found that factors like urbanization, population density, trade, energy mix, and the economic environment impact on the absolute level of CO<sub>2</sub> emissions. Al-Mulali et al. determined that 60% of Latin American and Caribbean countries have a positive bidirectional long-run relationship between energy consumption, CO<sub>2</sub> emissions, and economic growth. Chang (2013) found a bidirectional causal link between GDP and energy consumption, and GDP and CO<sub>2</sub> emissions. They suggested that increased energy consumption will stimulate CO<sub>2</sub> emissions. The EKC hypothesis was recently tested by Apergis and Ozturk (2015), Shahbaz et al. [59], and Al-Mulali et al. (2015b) with various datasets and econometric approaches. The findings of these studies were mixed and inconclusive.

## 2.2. CO<sub>2</sub> emissions, FDI, and financial development

Literature investigating the relationship between CO<sub>2</sub> emissions and FDI is relatively scarce, although FDI has been found to be an important variable affecting emissions [3]. A significant chunk of available literature has addressed the one-way causal relationship between FDI and CO<sub>2</sub> emissions, however, only a few studies have focused on the bi-directional link between FDI and CO<sub>2</sub> emissions. The impact of FDI on CO<sub>2</sub> emissions is mixed in the literature. Some studies found a positive relationship between FDI and CO<sub>2</sub> emissions, lending support to the pollution haven hypothesis (Cole et al., 2006; Wang et al., 2012), while others found a negative relationship, supporting the pollution haven hypothesis [3,11]. From this brief discussion, it is evident that there is no consensus as yet on the validity of the pollution haven hypothesis. Nevertheless, the relationship between CO<sub>2</sub> emissions and FDI has important implications for energy policy, especially for a country like Kuwait. Therefore, this study includes FDI as an explanatory variable in the model.

The effect of financial development on emissions has also been examined in the literature. Tamazian et al. [62] found that a high degree of financial development improves environmental conditions. Jalil and Feridun [29] reported that financial development has a negative effect of on CO<sub>2</sub> emissions in China. Zhang [65] found that financial development is one of the factors responsible for the increase in the level of CO<sub>2</sub> emissions. Financial development also contributes towards a rise in energy consumption and CO<sub>2</sub> emissions in Sub-Saharan African countries [2]. Ozturk and Acaravci (2013) reported that the association between financial development and CO<sub>2</sub> emissions is insignificant in the long run for Turkey. Overall, literature on the financial development–emissions nexus provides mixed results; therefore, further investigation of this relationship seems to be worthy.

## 3. Empirical model and econometric methods

An econometric model of the following form was estimated in the current study.

$$C_t = \beta_0 + \beta_1 FDI_t + \beta_2 GDPPC_t + \beta_3 EC_t + \beta_4 FD_t + \varepsilon_t \quad (1)$$

The coefficients  $\beta_1$ ,  $\beta_2$ ,  $\beta_3$ , and  $\beta_4$  represent the long-run elasticity estimates of CO<sub>2</sub> emissions with respect to FDI, real GDP per capita, energy consumption, and financial development proxied by private sector credit as a share of GDP, respectively.

To investigate the relationships, data for the following variables were sourced:

- Per capita CO<sub>2</sub> emissions (C)
- Per capita energy consumption (EC)
- Per capita real GDP (GDPPC)
- Financial development (FD), i.e., domestic credit available to the private sector as share of GDP
- FDI as share of GDP

The World Development Indicators database 2014 was the source of the data for all these variables [64]. Real GDP per capita (Y), which is measured at constant 2000 US\$, was used; per capita energy consumption (kWh) and per capita CO<sub>2</sub> emissions were estimated by dividing total energy consumption and CO<sub>2</sub> emissions by the mid-year population. The variables were then transformed into natural logs. This transformation was intended to overcome the problem of heteroscedasticity between the variables.

### 3.1. Estimation procedures

#### 3.1.1. Unit root tests

Since all the conventional unit root tests fail to identify the presence of structural break, if any, in the series [12], we conducted the Zivot and Andrews [66] unit root test, which accommodates a single structural break point in the level. If we consider our series as X, the structural tests take the following form;

$$\Delta X_t = a + aX_{t-1} + bT + cD_t \quad (2)$$

$$\Delta X_t = \beta + \beta X_{t-1} + ct + bDT_t + \sum_{j=1}^k d_j \Delta X_{t-j} + \varepsilon_t \quad (3)$$

$$\Delta X_t = \gamma + \gamma X_{t-1} + ct + dDT_t + \sum_{j=1}^k d_j \Delta X_{t-j} + \varepsilon_t \quad (4)$$

$$\Delta X_t = \Omega + \Omega X_{t-1} + ct + dD_t + dDT_t + \sum_{j=1}^k d_j \Delta X_{t-j} + \varepsilon_t \quad (5)$$

where D is a dummy variable and shows the mean shift at each point, and DT<sub>t</sub> is a trend shift variable. The null hypothesis in Zivot and Andrews [66] is c = 0 implies the presence of unit root in the absence of a structural break in the data, against the alternative that the series is trend stationary with an unknown time break. Then, this unit root test selects that time break which reduces the one-sided t-statistic to test c (= c-1) = 1.

#### 3.1.2. ARDL bounds testing approach

Uddin et al. [63] suggested that conventional cointegration techniques do not provide reliable results when data are plagued with structural breaks. Therefore, this study employed the Autoregressive Distributed Lag (ARDL) bounds testing approach developed by Pesaran [47] and Pesaran et al. [48] to estimate the cointegrating or long-run relationship between the variables. The ARDL technique has already proved to be efficient in cases of small sample size [48] and potentially removes the problems of omission bias and autocorrelation. In addition, the technique generally provides unbiased estimates of the long-run model and valid t-statistics, even in the presence of the problem of endogeneity [26]. The empirical formulation of the ARDL equation for our study was specified as follows:



$$\begin{aligned} \Delta C_t + \beta_0 + \beta_1 T + \beta_2 D + \beta_3 C_{t-1} + \beta_4 FDI_{t-1} + \beta_5 NET_{t-1} + \beta_6 FDI_{t-1} \\ + \beta_7 GDPPC_{t-1} + \beta_8 EC_{t-1} \\ + \sum_{i=1}^p \beta_9 \Delta C_{t-i} + \sum_{j=0}^q \beta_{10} \Delta GDPPC_{t-k} + \sum_{k=1}^r \beta_{11} \Delta FDI_{t-l} \\ + \sum_{l=0}^s \beta_{12} \Delta NET_{t-m} + \sum_{m=0}^t \beta_{13} \Delta FDI_{t-m} + \sum_{n=0}^u \beta_{14} \Delta EC_{t-n} + \varepsilon_t, \dots \end{aligned} \quad (6)$$

$$\begin{aligned} \Delta NET_t + \beta_0 + \beta_1 T + \beta_2 D + \beta_3 NET_{t-1} + \beta_4 FDI_{t-1} + \beta_5 C_{t-1} + \beta_6 FDI_{t-1} \\ + \beta_7 GDPPC_{t-1} + \beta_8 EC_{t-1} \\ + \sum_{i=1}^p \beta_9 \Delta NET_{t-j} + \sum_{j=0}^q \beta_{10} \Delta GDPPC_{t-k} + \sum_{k=1}^r \beta_{11} \Delta FDI_{t-l} \\ + \sum_{l=0}^s \beta_{12} \Delta C_{t-m} + \sum_{m=0}^t \beta_{13} \Delta FDI_{t-m} + \sum_{n=0}^u \beta_{14} \Delta EC_{t-n} + \varepsilon_t, \dots \end{aligned} \quad (7)$$

$$\begin{aligned} \Delta FDI_t + \beta_0 + \beta_1 T + \beta_2 D + \beta_3 FDI_{t-1} + \beta_4 NET_{t-1} + \beta_5 C_{t-1} + \beta_6 FDI_{t-1} \\ + \beta_7 GDPPC_{t-1} + \beta_8 EC_{t-1} \\ + \sum_{i=1}^p \beta_9 \Delta FDI_{t-j} + \sum_{j=0}^q \beta_{10} \Delta NET_{t-k} + \sum_{k=1}^r \beta_{11} \Delta C_{t-l} \\ + \sum_{l=0}^s \beta_{12} \Delta FDI_{t-m} + \sum_{m=0}^t \beta_{13} \Delta GDPPC_{t-m} + \sum_{n=0}^u \beta_{14} \Delta EC_{t-n} + \varepsilon_t, \dots \end{aligned} \quad (8)$$

$$\begin{aligned} \Delta FDI_t + \beta_0 + \beta_1 T + \beta_2 D + \beta_3 FDI_{t-1} + \beta_4 NET_{t-1} + \beta_5 C_{t-1} + \beta_6 FDI_{t-1} \\ + \beta_7 GDPPC_{t-1} + \beta_8 EC_{t-1} \\ + \sum_{i=1}^p \beta_9 \Delta FDI_{t-j} + \sum_{j=0}^q \beta_{10} \Delta GDPPC_{t-k} + \sum_{k=1}^r \beta_{11} \Delta NET_{t-l} \\ + \sum_{l=0}^s \beta_{12} \Delta C_{t-m} + \sum_{m=0}^t \beta_{13} \Delta FDI_{t-m} + \sum_{n=0}^u \beta_{14} \Delta EC_{t-n} + \varepsilon_t, \dots \end{aligned} \quad (9)$$

$$\begin{aligned} \Delta GDPPC_t + \beta_0 + \beta_1 T + \beta_2 D + \beta_3 GDPPC_{t-1} + \beta_4 NET_{t-1} + \beta_5 C_{t-1} \\ + \beta_6 FDI_{t-1} + \beta_7 FDI_{t-1} + \beta_8 EC_{t-1} \\ + \sum_{i=1}^p \beta_9 \Delta GDPPC_{t-j} + \sum_{j=0}^q \beta_{10} \Delta NET_{t-k} + \sum_{k=1}^r \beta_{11} \Delta C_{t-l} \\ + \sum_{l=0}^s \beta_{12} \Delta FDI_{t-m} + \sum_{m=0}^t \beta_{13} \Delta FDI_{t-m} + \sum_{n=0}^u \beta_{14} \Delta EC_{t-n} + \varepsilon_t, \dots \end{aligned} \quad (10)$$

$$\begin{aligned} \Delta EC_t + \beta_0 + \beta_1 T + \beta_2 D + \beta_3 EC_{t-1} + \beta_4 NET_{t-1} + \beta_5 C_{t-1} + \beta_6 FDI_{t-1} \\ + \beta_7 FDI_{t-1} + \beta_8 GDPPC_{t-1} \\ + \sum_{i=1}^p \beta_9 \Delta EC_{t-j} + \sum_{j=0}^q \beta_{10} \Delta NET_{t-k} + \sum_{k=1}^r \beta_{11} \Delta C_{t-l} \\ + \sum_{l=0}^s \beta_{12} \Delta FDI_{t-m} + \sum_{m=0}^t \beta_{13} \Delta FDI_{t-m} + \sum_{n=0}^u \beta_{14} \Delta GDPPC_{t-n} \\ + \varepsilon_t, \dots \end{aligned} \quad (11)$$

### 3.1.3. Gregory and Hansen cointegration test and ARDL estimation

To check whether the cointegrating relationship between the variables from the ARDL bounds test is robust, we employed the Gregory and Hansen [25] residual-based test of cointegration, which allows for a single change in the cointegrating parameters. The Gregory and Hansen test involves the testing of four models – level, trend, intercept or shifts in the intercept, and slope. Once the cointegrating relationship is confirmed, long-run and short-run coefficients are estimated with the application of ARDL. The short-run estimation also involves an error correction term, which reflects the speed of convergence of short-run disequilibrium towards the long-run equilibrium.

**Table 1**  
Summary statistics.

Variable	Obs	Mean	Std. Dev.	Min	Max
LCO2C	33	3.104	0.412	1.628	3.542
LGDPC	33	10.088	0.426	9.193	10.492
LFD	33	3.997	0.458	2.842	4.570
LFDI	33	-2.639	3.229	-10.120	6.958
LEU	33	9.039	0.396	7.204	9.349

### 3.1.4. Diagnostic tests

A number of diagnostic tests such as the Lagrange Multiplier (LM) test for serial correlation, the Ramsey RESET test for model specification, the normality test for heteroscedasticity, and model stability graphical plot tests (e.g. CUSUM and CUSUMS) were conducted.

### 3.1.5. The VECM Granger causality test

According to Granger [24], once the variables are integrated of the same order, the vector error correction model (VECM) short-run Granger causality test is appropriate to estimate their causal link. Since all the variables in this study are first difference stationary [I(1)], we proceeded further to determine the short-run and long-run causal directions between them. The exact direction of the causal link helps with better policy implications of the findings [60]. The potential causality pattern for this study was represented by the following VECM specification in a multivariate framework:

$$\Delta \ln Y_t = \beta_0 + \sum_{i=1}^p \beta_{1i} \Delta \ln Y_{t-i} + \sum_{i=0}^p \beta_{2i} \Delta NET_{t-i} + \sum_{i=0}^p \beta_{3i} \Delta FDI_{t-i} + \varepsilon_t \quad (12)$$

## 4. Empirical results and analysis

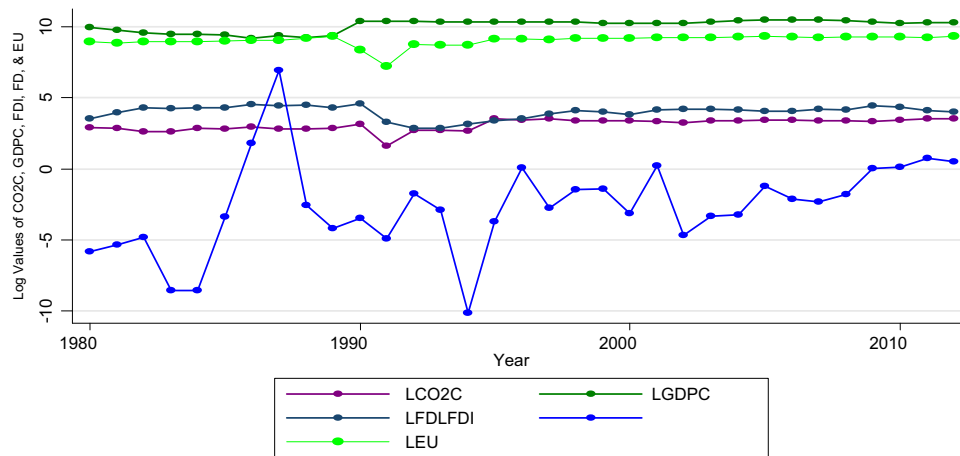
Table 1 reports summary statistics for all the variables in order to determine the nature of the data distribution. The data of all the series are nearly normally distributed, as the values of the standard deviations of these distributions are within a reasonable range, which imply that application of standard estimation techniques is not likely to provide spurious findings. Nevertheless, the data are free from the threat of multicollinearity, as evidenced from the Variance Inflation Factor (VIF) results depicted in Table 2. Fig. 1 depicts the logarithmic trend of all the variables for the sample period, which is more or less stable for all the variables.

The results of the Zivot and Andrews [66] unit root structural break test are presented in Table 3, and detect a number of break points in 1987, 1991, 1992, and 1996. The results further confirm that all the series are first difference stationary, i.e., I (1) in the presence of single structural breaks in the series. The structural break in 1987 implies that the Kuwait economy slowed down a little bit during the late 1980s, while it was aggravated further with the gulf war in the early 1990s. This is evident from the existence of structural breaks in 1992 and 1996.

Results from the Gregory-Hansen tests with change in level, in regime, and in both regime and trend are reported in Tables 4A, 4B, and 4C, respectively. All these tests indicate a cointegrating relationship among the variables, as the null hypothesis of no cointegration is rejected in all cases at

**Table 2**  
Variance inflation factors.

	Coefficient	Centered
Variable	Variance	VIF
LEU	0.010321	1.320708
LFD	0.009861	1.632587
LFDI	0.000139	1.144816
LGDPC	0.008999	1.331181
C	1.747027	NA



**Fig. 1.** Logarithmic trends in GDP per capita, CO<sub>2</sub> emissions, electricity consumption, and financial development in Kuwait for the period 1980–2012.

Source: World Bank Development Indicators database, The World Bank

**Table 3**

Zivot–Andrews structural break unit root test.

Variable	Z & A test for level			Z & A test for 1st difference		
	T-Statistic	TB	Outcome	T-Statistic	TB	Outcome
LGDPC	−3.192	1994	Unit Root	−5.607***	1991	Stationary
LFD	−3.299	1993	Unit Root	−4.869***	1992	Stationary
LFDI	−3.970	1987	Unit Root	−5.448***	1987	Stationary
LCO <sub>2</sub>	−4.421**	1992	Stationary	−9.172***	1996	Stationary
LEU	−4.026	1992	Unit Root	−5.993***	1996	Stationary

Note: \*\* and \*\*\* denote 5% and 1% levels of significance, respectively.

**Table 4A**

Gregory–Hansen test for cointegration with regime shifts (model: change in level).

Test statistic	Statistic	Breakpoint	Date	Asymptotic critical values		
				1%	5%	10%
ADF	−5.37	21	2000	−6.05	−5.56	−5.31
Zt	−4.99	15	1994	−6.05	−5.56	−5.31
Za	−28.86	15	1994	−70.18	−59.40	−54.38

**Table 4B**

Gregory–Hansen test for cointegration with regime shifts (model: change in regime).

Test statistic	Statistic	Breakpoint	Date	Asymptotic critical values		
				1%	5%	10%
ADF	−5.62	16	1995	−6.92	−6.41	−6.17
Zt	−5.71	16	1995	−6.92	−6.41	−6.17
Za	−33.25	16	1995	−90.35	−78.52	−75.56

**Table 4C**

Gregory–Hansen test for cointegration with regime shifts (model: change in regime and trend).

Test Statistic	Statistic	Breakpoint	Date	Asymptotic Critical Values		
				1%	5%	10%
ADF	−5.96	15	1994	−7.31	−6.84	−6.58
Zt	−6.00	14	1993	−7.31	−6.84	−6.58
Za	−34.86	14	1993	−100.69	−88.47	−82.30

**Table 5**

Estimated long-run coefficients using the ARDL (1,1,1,1,0) selected based on AIC.

Regressor	Coefficient	Standard error		T-ratio [Prob]	
LGDPC	0.431	0.092		4.650	[.000]
LFD	0.013	0.115		0.120	[.905]
LFDI	0.001	0.012		0.127	[.010]
LEU	0.875	0.153		5.695	[.000]
C	−9.222	1.207		−7.636	[.000]
		95% LB	UB	90% LB	UB
F Statistic	6.998	3.285	4.689	2.731	3.9919

the 5% level of significance. This indicates the potential of a long-run relationship among the variables. The findings of the cointegrating association are also expected for an oil-based economy like Kuwait, which is characterized by high electricity consumption. In addition, infrastructure investment, GDP growth and foreign direct investment in Kuwait have been steady during the last decade.

Table 5 provides long-run coefficients from ARDL estimates. The reported results indicate that there is a highly significant (at the 1% level of significance) long-run relationship between FDI and CO<sub>2</sub> emissions, which supports the pollution haven hypothesis for Kuwait. A 1% increase in FDI causes a 0.001% rise in CO<sub>2</sub> emissions. Despite the fact that the coefficient is still small, such an effect must not be undermined as Kuwait is likely to require FDI with favorable terms of trade due to the expected shrinkage in the economy in the near future as a consequence of continuously depleting oil resources accompanied by a subsequent decline in oil prices. Economic growth and electricity consumption also have a positive significant association with CO<sub>2</sub> emissions. A 1% increase in economic growth and electricity consumption leads to a 0.66% and 0.71% rise in CO<sub>2</sub> emissions, respectively. The magnitude of these coefficients reveals that despite efforts for increased use of renewable resources in the energy sector, especially in electricity generation, a significant reduction in emissions is still far

**Table 6**

Error correction representation for the selected ARDL (1,1,1,1,0) selected based on AIC.

Regressor	Coefficient	Standard error		T-ratio [Prob]	
dLGDPC	0.666	0.122		5.448	[.000]
dLFD	0.195	0.131		1.489	[.148]
dLFDI	0.017	0.008		2.111	[.044]
dLEU	0.713	0.085		8.330	[.000]
ecm(−1)	−0.814	0.095		−8.537	[.000]

**Table 7**  
Diagnostic tests.

Test	Statistic	Test	Statistic
R Square	0.93	Adjusted R Square	0.90
Serial Correlation	1.070 [0.301]	Normality	1.735 [0.420]
Functional Form	0.246 [0.619]	Heteroscedasticity	0.037 [.846]

from reality. The estimation results find no significant long-run relationship between financial development and CO<sub>2</sub> emissions. The key potential reason for such an outcome is that Kuwait has been a financially developed market for a while.

Table 6 reports the short-term effects of the independent variables on CO<sub>2</sub> emissions. The findings indicate that FDI causes CO<sub>2</sub> emissions to rise in the short run and the coefficient of this effect is stronger. The variables of economic growth and electricity consumption also stimulate CO<sub>2</sub> emissions. Financial development has no significant effect on CO<sub>2</sub> emissions in the short run. The coefficient of the error correction term,  $ECT_{t-1}$ , is  $-0.814$  and has the expected sign. It also implies a very speedy convergence (the short-term deviations being corrected at the speed of 81% towards the long-term equilibrium each year).

Table 7 displays the results of the diagnostic tests carried out from the ARDL estimates. The LM test confirms no serial correlation, while Ramsey's RESET test suggests that the model (Equation 1) has the correct functional form. The normality test reveals that the disturbance terms are normally distributed and are homoscedastic, as supported by the heteroscedasticity test. The stability of the short- and long-run estimates over time is justified

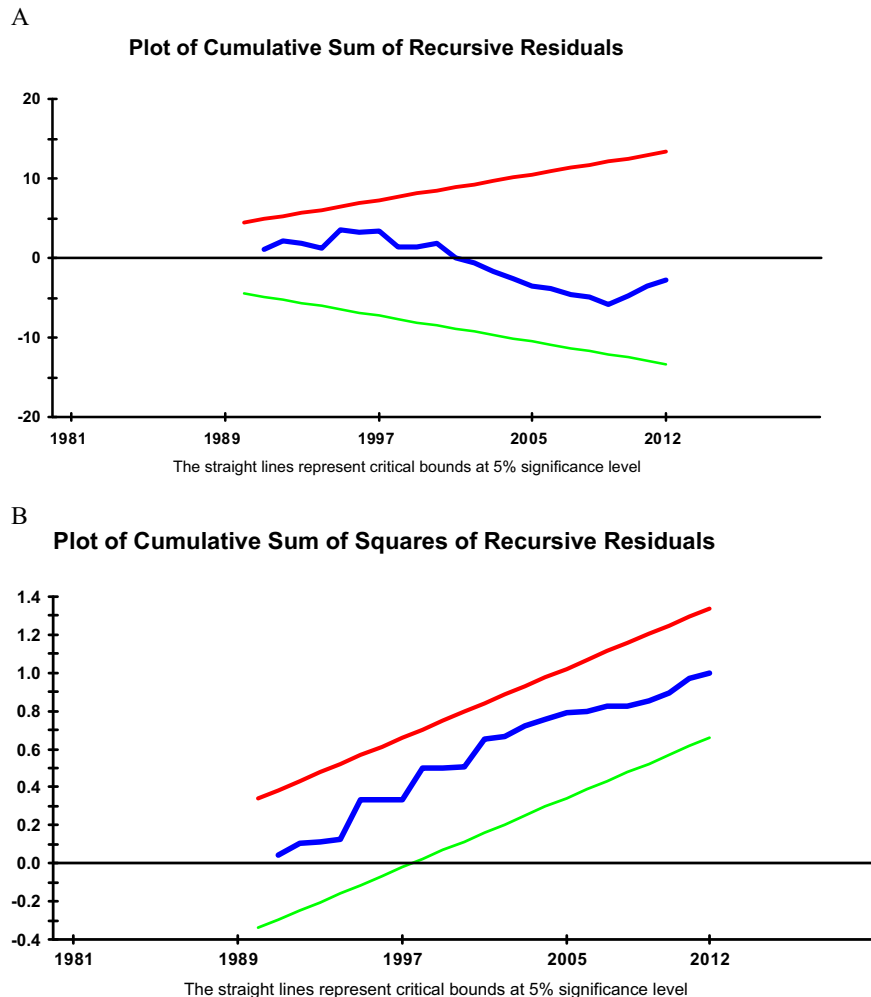
**Table 8**  
Results from DOLS estimation.

Variables:	LCO2C
LGDP	0.167*** (0.0606)
LFD	-0.469*** (0.0987)
LFDI	0.0214** (0.0102)
LEU	1.310*** (0.135)
Constant	-8.482*** (0.840)
Observations	30
R-squared	0.969

Notes: \*, \*\*, and \*\*\* denote 10%, 5%, and 1% levels of significance, respectively. Corresponding p values are in parentheses.

by the graphical plots of CUSUM and CUSUM of Squares (Figs. 2A and 2B). It shows that estimated coefficients lie between the upper and lower critical bounds (blue lines in the figure) at the 5% significance level.

The results from the Dynamic Ordinary Least Squares (DOLS) estimation are reported in Table 8. Although the coefficients vary, the DOLS estimation produces similar results, confirming that our long-run



**Fig. 2.** A: Plot of the cumulative sum of recursive residuals B: Plot of the cumulative sum of squares of recursive residuals.

**Table 9**  
VECM short-run and long-run Granger causality results.

Dependent variable	Short run					Long-run ECT (–1)
	$\Delta\text{LCO}_2$	$\Delta\text{LFD}$	$\Delta\text{LFDI}$	$\Delta\text{LEU}$	$\Delta\text{LGDP}$	
$\Delta\text{LCO}_2$	–	4.037 (0.253)	0.001 (0.051)**	1.244 (0.023)*	0.397 (0.013)**	–2.12147**
$\Delta\text{LFD}$	0.324 (0.573)	–	0.001 (0.974)	16.37 (0.897)	3.229 (0.048)**	–5.44048
$\Delta\text{LFDI}$	1.976 (0.020)	0.806 (0.036)*	–	0.127 (0.723)	0.002 (0.147)	–4.71230
$\Delta\text{LEU}$	0.001 (0.973)	1.336 (0.257)	–	0.204 (0.654)	0.322 (0.004)*	–5.02545**
$\Delta\text{LGDP}$	0.994 (0.2627)	0.072 (0.789)	0.018 (0.892)	0.779 (0.384)**	–	–5.88687**

Notes: \*, \*\*, and \*\*\* denote 10%, 5%, and 1% levels of significance, respectively. Corresponding p values are in parentheses.

findings are robust across different methods of estimation.

Table 9 presents the values of the VECM short-run and long-run Granger causality F-test statistics. It is evident from the table that the coefficients of the error correction term (ECT) and FDI are significant in the CO<sub>2</sub> emissions equation, which indicates that long-run and short-run causality run from FDI to CO<sub>2</sub> emissions. It further shows that FDI strongly Granger-causes CO<sub>2</sub> emissions, but there is no reverse causality between them. There is also a strong unidirectional causal linkage running from electricity consumption to CO<sub>2</sub> emissions and from economic growth to CO<sub>2</sub> emissions. A weak causality running from economic growth to financial development is also observed. A bidirectional causal association exists between economic growth and electricity consumption both in the short and long run. The effects of CO<sub>2</sub> emissions, FDI, and electricity consumption on financial development and the effects of CO<sub>2</sub> emissions, electricity consumption, and economic growth on FDI are neutral.

Thus, the short-run and long-run Granger causality results support in favor of the proposition that FDI, electricity consumption, and economic growth strongly cause CO<sub>2</sub> emissions in Kuwait. While electricity consumption causes emissions to rise, Kuwait's economic growth also depends on electricity consumption.

## 5. Conclusions and policy implications

This study investigated the effects of economic growth, electricity consumption, FDI, and financial development on CO<sub>2</sub> emissions using time series data for Kuwait for the period 1980–2013. Results from the ARDL estimates indicate that the variables FDI, economic growth, financial development, and electricity consumption have a positive and significant relationship with CO<sub>2</sub> emissions for Kuwait, both in the short and long run. However, both the short-run and the long-run relationships between financial development and CO<sub>2</sub> emissions are insignificant. The robustness of the long-run relationship between the variables was checked by the application of the DOLS estimation method, which produced similar results. The VECM Granger causality test reveals that FDI, electricity consumption, and economic growth strongly Granger-cause CO<sub>2</sub> emissions. A unidirectional weak causality running from economic growth to financial development is also observed. There is also a bidirectional causal association between economic growth and electricity consumption.

Based on the findings of this study, it is obvious that in the face of enormously growing energy demand, it would be very challenging for Kuwait to pursue an energy conservation policy. To meet the growing energy demand, electricity is mostly generated from fossil fuel sources, therefore, Kuwait is in dire need of seeking alternative sources of power generation along with other potential measures to reduce CO<sub>2</sub> emissions. As such, it should channel more resources and logistics into minimizing its CO<sub>2</sub> emissions. Kuwait also has the potential to reduce CO<sub>2</sub> emissions through a variety of measures, especially by improving electricity generation

efficiency. To achieve this goal, Kuwait needs to continue expanding its existing Carbon Capture, Utilization, and Storage (CCUS) facilities, as such actions have already proved to be an effective method for combatting CO<sub>2</sub> emissions in all GCC countries, including Kuwait itself [5]. Two other measures – post-combustion capture [49] and carbon pricing (emissions trading) – may also be cost-effective methods to reduce emissions. Without a price signal, consumers cannot be expected to rationalize their behavior. From a policy perspective, the government needs to ensure a more conducive regulatory framework for promoting CCUS-based activities and a reform of energy price to reduce the growth in electricity consumption.

In addition, like other GCC countries, Kuwait is very rich in renewable resources such as wind and solar. Kuwait is rated as excellent in terms of its potential for solar energy due to its very high average daily irradiation and ambient temperatures. Use of solar energy to produce electricity is perhaps the ideal renewable source of energy for Kuwait [50]. Therefore, the government must invest more to promote the use of solar energy. Wind is another potential renewable energy source that should be considered as a priority alternative for electricity generation.

Kuwait should reduce unexpected wastage of electricity use. Given that it has a highly subsidized electricity program that encourages massive and sprawling consumption of electricity, it is very important that its efforts to rationalize electricity consumption are given priority as this would reduce the social and environmental costs of such a highly subsidized project of the government. Since the success of electricity bill collection is very disappointing in Kuwait, which in turn results in significant wastage of this resource, it is time to rethink whether Kuwait is able to afford this kind of flexibility anymore. Also, due to population growth and rapid urbanization, the transport sector has expanded at phenomenal speed in Kuwait over the last two decades. It is argued that the transport sector is also responsible for a significant proportion of emissions – a possibility that cannot be ruled out for a country like Kuwait. Therefore, due attention must also be given to reducing emissions from this sector. Achieving electricity use efficiency is also important to reduce its consumption. Key measures may include encouraging technological development and innovation, and incentivizing consumers to replace inefficient appliances and build more energy-efficient homes.

Despite the drastic recent fall in global oil prices, the economy of Kuwait is still characterized by relatively large liquid balances. This study strongly recommends that Kuwait undertake aggressive investment in building energy expertise and promoting energy research in order to achieve technological breakthroughs that will potentially enable it to produce more output with fewer emissions. Any technology that is able to recycle billions of tons of CO<sub>2</sub> emissions into renewable energy is likely to be a catalyst for a country like Kuwait to combat emissions. Therefore, additional investment in research and development on developing low-carbon technologies and renewable sources of energy could be useful in reducing CO<sub>2</sub> emissions without any detrimental effects on Kuwait's economic growth.

## Acknowledgements

The authors are very grateful to the editor and the anonymous referees whose comments have significantly improved this work. All remaining errors are ours.

## Appendix A. Supplementary material

Supplementary data associated with this article can be found in the online version at <http://doi:10.1016/j.rser.2017.06.009>.

## References

- [1] Adom PK, Bekoe W, Amuakwa-Menash F, Mensah JT, Botchway E. Carbon dioxide emissions, economic growth, industrial structure and technical efficiency: empirical evidence from Ghana, Senegal and Morocco on the causal dynamics. *Energy* 2012;47:314–25.



- [2] Al-Mulali U. Exploring the bi-directional long run relationship between urbanization, energy consumption and carbon dioxide emission. *Energy* 2012;46:156–67.
- [3] Al-Mulali U, Tang CF. Investigating the validity of pollution haven hypothesis in the Gulf Cooperation Council countries. *Energy Policy* 2013;60:813–9.
- [4] Alkhathlan K, Javid M. Energy consumption, carbon emissions and economic growth in Saudi Arabia: an aggregate and disaggregate analysis. *Energy Policy* 2013;62:1525–32.
- [5] Al-Mamun Md, Sohag K, Mia MAH, Salahuddin G, Ozturk I. Regional differences in the dynamic linkage between CO<sub>2</sub> emissions, sectoral output and economic growth. *Renew Sustain Energy Rev* 2014;38:1–11.
- [6] Al-Mulali U. Exploring the bi-directional long run relationship between urbanization, energy consumption and carbon dioxide emission. *Energy* 2012;46:156–67.
- [7] Al-Saleh YM, Vidican G, Natarajan L, Theeyattuparampil VV. Carbon capture, utilization and storage scenarios for the Gulf Cooperation Council region: a Delphi-based foresight study. *Futures* 2012;44:105–15.
- [8] Ang A. 'Workers' remittances and economic growth in the Philippines. Social Research Center, University of Santo Tomas; 2007 ([http://www.degit.ifw-kiel.de/papers/degint\\_12/CO12\\_029.pdf](http://www.degit.ifw-kiel.de/papers/degint_12/CO12_029.pdf)).
- [9] Ang JB. Economic development, pollutant emissions and energy consumption in Malaysia. *Journal of Policy Modeling* 2008;30:271–8.
- [10] Apergis N, Payne JE. A dynamic panel study of economic development and the electricity consumption-growth nexus. *Energy Econ* 2011;33:770–81.
- [11] Arouri MEH, Youssef AB, Mhenni H, Rault C. Energy consumption, economic growth and CO<sub>2</sub> emissions in Middle East and North African countries. *Energy Policy* 2012;45:342–9.
- [12] Atici C. Carbon emissions in Central and Eastern Europe: Environmental Kuznets curve and implications for sustainable development. *Sustain. Dev.* 2009;17:155–60.
- [13] Baum CF. A review of Stata 8.1 and its time series capabilities. *Int J Forecast* 2004;20:151–61.
- [14] Begum RA, Sohag K, Abdullah SMS, Jafar M. CO<sub>2</sub> emissions, energy consumption, economic and population growth in Malaysia. *Renew Sustain Energy Rev* 2015;41:594–601.
- [15] Behera SR, Dash DP. The effect of urbanization, energy consumption and foreign direct investment on the carbon dioxide emission in the SSEA (South and Southeast Asian) region. *Renew Sustain Energy Rev* 2017;70:96–106.
- [16] Bekhet HA, Matar A, Yasmin T. CO<sub>2</sub> emissions, energy consumption, economic growth, and financial development in GCC countries: dynamic simultaneous equation models. *Renew Sustain Energy Rev* 2017;70:117–32.
- [17] Belke A, Dreger C, Haan F. Energy consumption and economic growth: new insights into the cointegrating relationship. *Energy Econ* 2011;33(5):782–9.
- [18] Burnett WJ, Bergstrom CJ, Wetzstein EM. Carbon dioxide emissions and economic growth in the U.S. *Journal of Policy Modeling* 2013;35:1014–28.
- [19] Cowan WN, Chang T, Inglesi-Lotz R, Gupta R. The nexus of electricity consumption, economic growth and CO<sub>2</sub> emissions in the BRICS countries. *Energy Policy* 2014;66:359–68.
- [20] El-Katiri L, Fattouh B, Segal P. Anatomy of an oil-based welfare state: Rent distribution in Kuwait, Centre for the Study of Global Governance, London School of Economics, London, 2011.
- [21] Enerdata. Global Energy Statistical Yearbook 2016, France (<https://www.enerdata.net>); 2016.
- [22] Furuoka F. Renewable electricity consumption and economic development: new findings from the Baltic countries. *Renew Sustain Energy Rev* 2017. <http://dx.doi.org/10.1016/j.rser.2016.12.074>.
- [23] Ghosh S. Examining carbon emissions-economic growth nexus for India: a multi-variate cointegration approach. *Energy Policy* 2010;38:2613–3130.
- [24] Ghosh S, Kanjilal K. Long-term equilibrium relationship between urbanization, energy consumption and economic activity: empirical evidence from India. *Energy* 2014;66:324–31.
- [25] Granger CWJ. Investigating causal relations by econometric models and cross-spectral methods. *Econometrica* 1969;37:424–38.
- [26] Gregory AW, Hansen BE. Residual-based tests for cointegration in models with regime shifts. *J Econ* 1996;70:99–126.
- [27] Harris R, Sollis R. Applied time series modelling and forecasting. Oxford: Wiley; 2003.
- [28] Hasanov F, Bulut C, Suleymanov E. Review of energy-growth nexus: a panel analysis for ten Eurasian oil exporting countries. *Renew Sustain Energy Rev* 2017;73:369–86.
- [29] Hertog S, Luciani G. Energy and Sustainability policies in the GCC, The Center for the Study of Global Governance, Kuwait Program on Development, Governance and Globalization in the Gulf States, November 2009; 2009.
- [30] Jalil A, Feridun M. The impact of growth, energy and financial development on the environment in China: a cointegration analysis. *Energy Econ* 2011;33:284–91.
- [31] Li F, Dong S, Li X, Li Q, Yang W. Energy consumption-economic growth relationship and carbon dioxide emissions in China. *Energy Policy* 2011;39:568–74.
- [32] Lin B, Ouyang X. Analysis of energy related CO<sub>2</sub> (carbon dioxide) emissions and reduction potential in the Chinese non-metallic industrial products industry. *Energy* 2014;68:688–97.
- [33] Lin B, Ouyang X. Energy demand in China: comparison of characteristics between the US and China in rapid urbanization stage. *Energy Convers Manag* 2014;79:128–39.
- [34] Lotfalipour MR, Falahi MA, Ashena M. Economic growth, CO<sub>2</sub> emissions and fossil fuels consumption in Iran. *Energy* 2010;35:5115–20.
- [35] Narayan PK, Narayan S. Carbon dioxide emissions and economic growth: panel data evidence from developing countries. *Energy Policy* 2010;38:661–6.
- [36] Omri A, Nguyen DK, Rault C. Causal interactions between CO<sub>2</sub> emissions, FDI, and economic growth: evidence from dynamic simultaneous-equation models. *Econ Model* 2014;42:382–9.
- [37] Ouyang X, Lin B. A projection of future electricity intensity and conservation potential in the Chinese building materials industry. *Energy Build* 2014;84:268–76.
- [38] Ouyang X, Lin B. An analysis of the driving forces of energy-related carbon dioxide emissions in China's industrial sector. *Renew Sustain Energy Rev* 2015;45:838–49.
- [39] Ouyang X, Lin B. Carbon dioxide (CO<sub>2</sub>) emissions during urbanization: a comparative study between China and Japan. *J Clean Prod* 2017;143:356–68.
- [40] Ozcan B. The nexus between carbon emissions, energy consumption and economic growth in Middle East countries: a panel data analysis. *Energy Policy* 2013;62:1138–47.
- [41] Ozokcu S, Ozdemir O. Economic growth, energy and environmental Kuznets curve. *Renew Sustain Energy Rev* 2017;72:639–47.
- [42] Ozturk I, Al-Mulali U. Natural gas consumption and economic growth nexus: panel data analysis for GCC countries. *Renew Sustain Energy Rev* 2015;51:998–1003.
- [43] Ozturk I, Acaravci A. Energy consumption, CO<sub>2</sub> emissions, economic growth and foreign trade relationship in Cyprus and Malta. *Energy Sources, Part B: Econ, Plan, Policy* 2016;11(4):321–7.
- [44] Ozturk I, Acaravci A. Electricity consumption and real GDP causality nexus: evidence from ARDL bounds testing approach for 11 MENA countries. *Appl Energy* 2011;88:2885–92.
- [45] Pao H, Fu H, Tseng C. Forecasting of CO<sub>2</sub> emissions, energy consumption and economic growth in China using an improved grey model. *Energy* 2012;40:400–9.
- [46] Pao H, Yu H, Yang Y. Modeling the CO<sub>2</sub> emissions, energy use and economic growth in Russia. *Energy* 2011;36:5094–100.
- [47] Pao HT, Tsai CM. Modeling and forecasting the CO<sub>2</sub> emissions, energy consumption and economic growth in Brazil. *Energy* 2011;36:2450–8.
- [48] Pesaran H. The role of econometric theory in modeling the long run. *Econom J* 1997;107(440):178–91.
- [49] Pesaran H, Shin Y, Smith R. Bounds testing approaches to the analysis of level relationships. *J Appl Econ* 2001;16(3):289–326.
- [50] Qadir A, Mokhtar M, Khalipour R, Milani D, Vassallo A. Potential for solar-assisted post-combustion carbon capture in Australia. *Appl Energy* 2013;111:175–85.
- [51] Ramadan M, Naseeb A. The cost-benefit analysis of implementing photovoltaic solar system in the state of Kuwait. *Renew Energy* 2011;36:1272–6.
- [52] REEEP. Policy and regulatory reviews: Clean energy information portal, Renewable Energy & Energy Efficiency Partnership, Vienna, 2 017. (<http://www.reeep.org/kuwait-2012>).
- [53] Saboori B, Sapri M, Baba M. Economic growth, energy consumption and CO<sub>2</sub> emissions in OECD (Organization of Economic Co-operation and Development)'s transport sector: A fully modified bi-directional relationship approach. *Energy* 2014. <http://dx.doi.org/10.1016/j.energy.2013.12.048>, (2014).
- [54] Saboori B, Sulaiman J. CO<sub>2</sub> emissions, energy consumption and economic growth in Association of Southeast Asian Nations (ASEAN) countries: a cointegration approach. *Energy* 2013;55:813–22.
- [55] Sahzabi A, Saaki K, Yousefi H, Sugai Y. CO<sub>2</sub> emission and economic growth of Iran. *Mitig Adapt Strateg Glob Change* 2011;16(1):63–82.
- [56] Salahuddin M, Alam K. Internet usage, electricity consumption and economic growth in Australia: a time series evidence. *Telemat Inform* 2015;32:862–78.
- [57] Salahuddin M, Gow J. Economic growth, energy consumption and CO<sub>2</sub> emissions in Gulf Cooperation Council countries. *Energy* 2014;73:44–58.
- [58] Salahuddin M, Gow J, Ozturk I. Is the long-run relationship between economic growth, electricity consumption, carbon dioxide emissions and financial development in Gulf Cooperation Council Countries robust?. *Renew Sustain Energy Rev* 2015;51:317–26.
- [59] Shiba R, Shahbaz M, Hamdi H. A contribution of foreign direct investment, clean energy, trade openness, carbon emissions and economic growth to energy demand in UAE. *Economic Modelling* 2013;36:191–7.
- [60] Shahbaz M, Dube S, Ozturk I, Jalil A. Testing the Environmental Kuznets Curve Hypothesis in Portugal. *International Journal of Energy Economics and Policy* 2015;5(2):475–81.
- [61] Shahbaz M, Khan S, Tahir MI. The dynamic links between energy consumption, financial development and trade in China: fresh evidence from multivariate framework analysis. *Energy Econ* 2013;40:8–21.
- [62] Sohag K, Begum RA, Abdullah SMS, Jafar M. Dynamics of energy use, technological innovation, economic growth and trade openness in Malaysia. *Energy* 2015;90(2):1497–507.
- [63] Tamazian A, Peneiro J, Vadlamannati KC. Does higher economic and financial development lead to environmental degradation: evidence from BRIC countries. *Energy Policy* 2009;37:246–53.
- [64] Uddin S, Sjo B, Shahbaz M. The causal nexus between financial development and economic growth in Kenya. *Econ Model* 2013;35:701–7.
- [65] World Bank. World Development Indicators. Washington DC, USA: The World Bank; 2015, [available from] (<http://data.worldbank.org/data-catalog/world-development-indicators>), [accessed on 03.08.2015].
- [66] Zhang YJ. The impact of financial growth on carbon emissions: an empirical analysis in China. *Energy Policy* 2011;39:2197–203.
- [67] Zivot E, Andrews D. Further evidence of great crash, the oil price shock and unit root hypothesis. *J Bus Econ Stat* 1992;10:251–70.