

POSTER PRESENTATION

Open Access

# Improved image quality in GRAPPA-accelerated coronary MRA using an outer volume suppressing 2D-T<sub>2</sub>-Prep

Andrew J Coristine<sup>1,2\*</sup>, Jerome Yerly<sup>1,2</sup>, Matthias Stuber<sup>1,2</sup>

From 18th Annual SCMR Scientific Sessions  
Nice, France. 4-7 February 2015

## Background

Two-dimensional (2D) spatially selective radiofrequency (RF) pulses may be used to excite a restricted volume of tissue. By incorporating a “pencil beam” 2D pulse into a T<sub>2</sub>-Prep module, one may create a “2D-T<sub>2</sub>-Prep” that combines T<sub>2</sub>-weighting with outer volume suppression. This may be of particular benefit to parallel imaging techniques, where artefacts typically originate from residual foldover signal. By suppressing signal from outside the targeted region of interest (ROI), image quality may thus improve. We present numerical simulations, phantom validation, and *in vivo* MRA of the right coronary artery to test this hypothesis.

## Methods

The first RF pulse of an adiabatic T<sub>2</sub>-Prep was replaced with a jinc pulse and spiral gradients. This excites a cylindrical volume. Meanwhile, the final RF pulse remains non-selective; it thus restores the cylinder of T<sub>2</sub>-prepared magnetization, but also rotates outer magnetization into the transverse plane, where it is spoiled. This “2D-T<sub>2</sub>-Prep”, and its conventional counterpart, were used prior to normal and GRAPPA-accelerated MRI.

First, a numerical phantom, based on real image data (see below), was used to simulate acceleration factors of R=1.6 with random coil noise. Through repeated simulations, per pixel maps of SNR, noise, and G-factor were predicted for both T<sub>2</sub>-Preps.

Next, the actual phantom, with compartments doped to mimic blood, myocardium, and fat, was scanned 50 times for each acceleration and T<sub>2</sub>-Prep (50x6x2=600

total scans), on a 1.5T Siemens Aera using a gated, 2D gradient echo, 16 channel chest coil, FoV 384x384 (matrix 384x384), 4.0mm slices, TE T<sub>2</sub>-Prep = 40ms, RF angle 20°, and TE/TR/T<sub>acq</sub>=3.4/8.7/69 ms. For each “tissue”, an ROI was chosen and the mean SNR<sub>multi</sub> was calculated.

For *in vivo* experiments, the RCA was imaged in 10 healthy adults, using accelerations of R=1,3, and 6. Parameters were as above, though a volume-targeted 3D sequence was used with 1.5mm reconstructed slices, 24mm volume thickness, water-selective RF excitation pulses of 20°, and TE/TR/T<sub>acq</sub>=5.2/11.6/93.0 ms. Both T<sub>2</sub>-Preps were compared using Soap-Bubble vessel sharpness measurements for each acceleration, and the % differences were calculated.

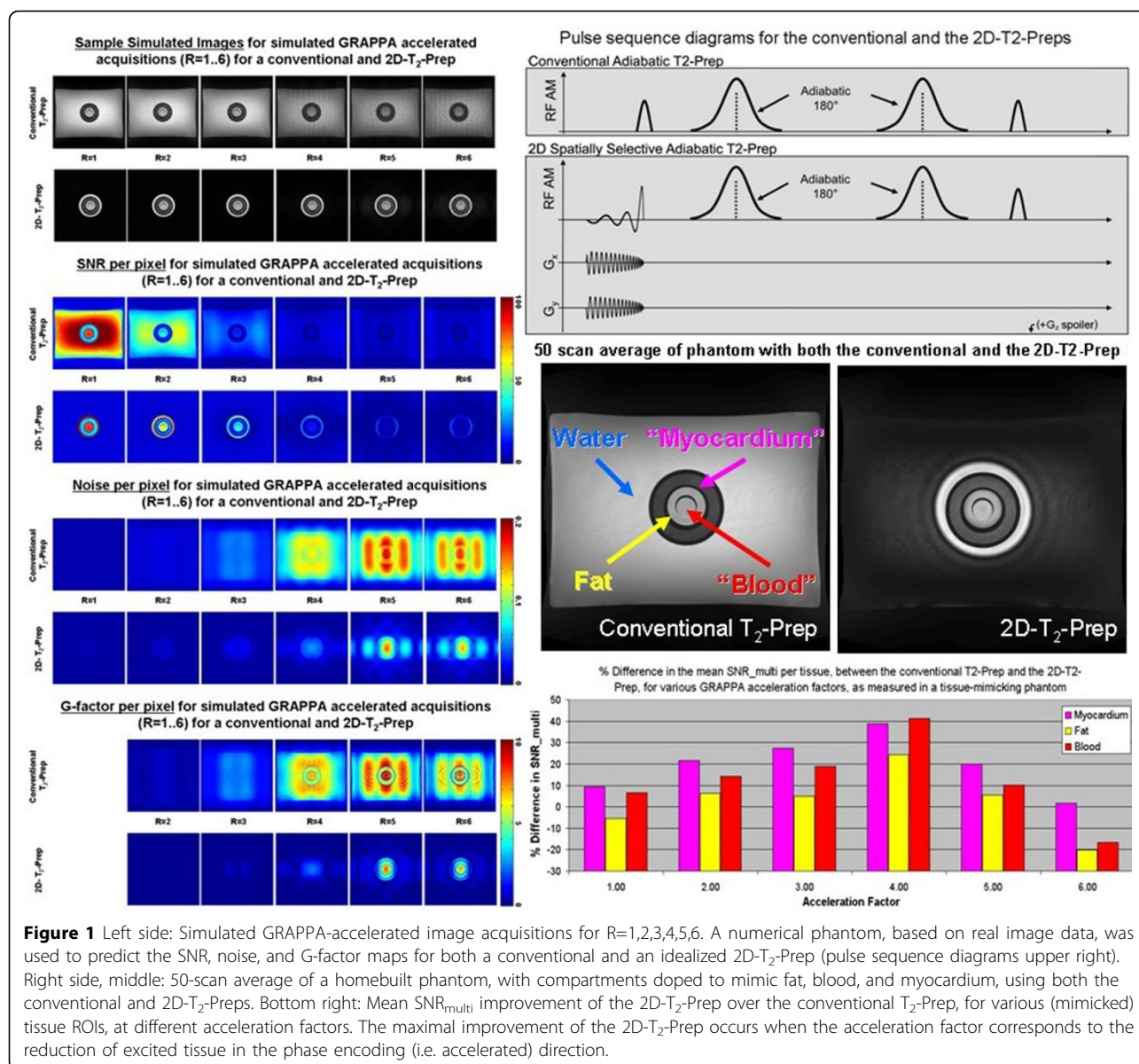
## Results

In simulations, the 2D-T<sub>2</sub>-Prep significantly improved SNR for accelerated imaging, peaking at a value of R=4. Phantoms also predicted a peak improvement at R=4 (Figure 1, chart). This corresponds to the degree of outer volume suppression of the 2D-T<sub>2</sub>-Prep, specifically the reduction of excited tissue in the phase encoding (i. e. accelerated) direction. For *in vivo* images of the RCA (Figure 2), vessel sharpness improved by a greater % for higher acceleration factors, demonstrating that the 2D-T<sub>2</sub>-Prep especially benefits accelerated coronary MRA.

## Conclusions

Suppressing outer volume signal with a 2D-T<sub>2</sub>-Prep improves image quality particularly well in GRAPPA-accelerated acquisitions in simulations, phantoms, and volunteers, demonstrating that it should be considered when performing accelerated coronary MRA.

<sup>1</sup>Department of Radiology, University Hospital (CHUV) / University of Lausanne (UNIL), Lausanne, Switzerland  
Full list of author information is available at the end of the article



## Funding

This work is supported in part by the grant 320030-143923 of the Swiss National Science Foundation.

## Authors' details

<sup>1</sup>Department of Radiology, University Hospital (CHUV) / University of Lausanne (UNIL), Lausanne, Switzerland. <sup>2</sup>CardioVascular Magnetic Resonance (CVMR), Centre for Biomedical Imaging (CIBM), Lausanne, Switzerland.

Published: 3 February 2015

doi:10.1186/1532-429X-17-S1-P382

**Cite this article as:** Coristine et al.: Improved image quality in GRAPPA-accelerated coronary MRA using an outer volume suppressing 2D- $T_2$ -Prep. *Journal of Cardiovascular Magnetic Resonance* 2015 **17**(Suppl 1):P382.

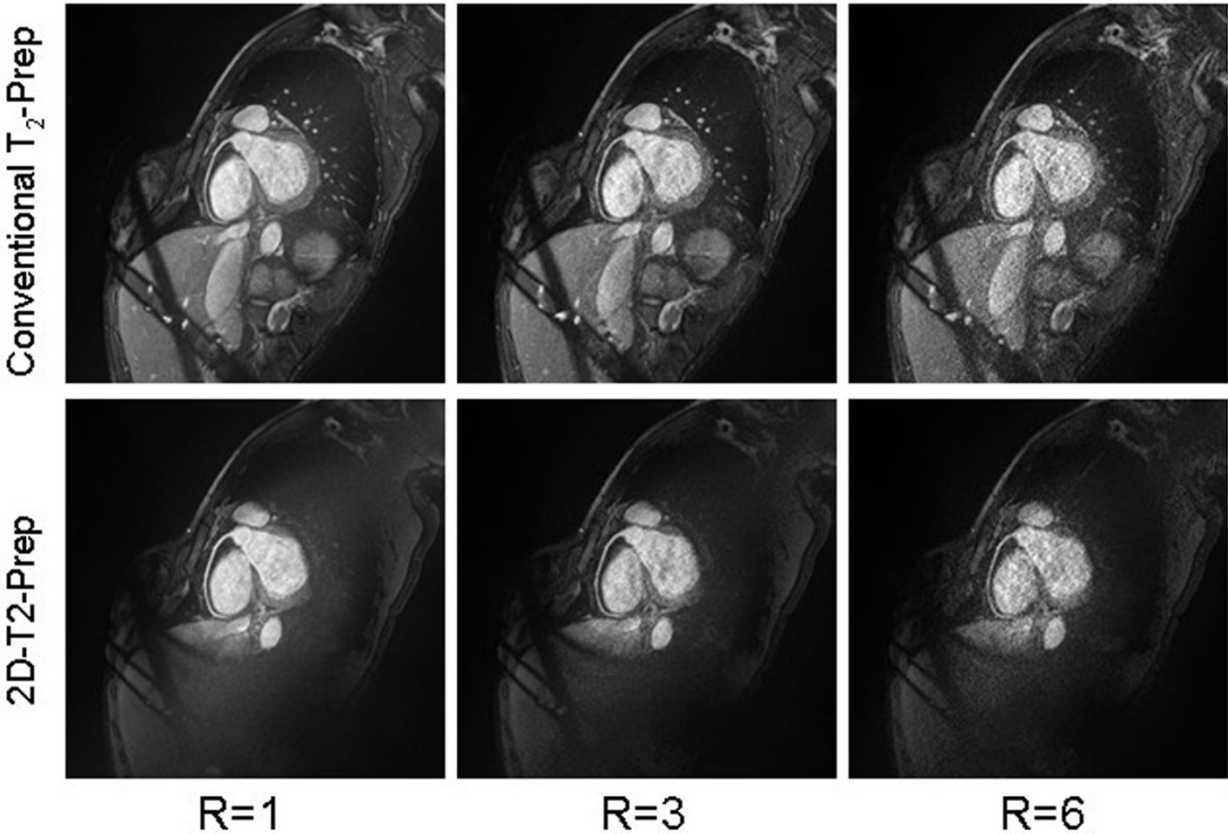
**Submit your next manuscript to BioMed Central and take full advantage of:**

- Convenient online submission
- Thorough peer review
- No space constraints or color figure charges
- Immediate publication on acceptance
- Inclusion in PubMed, CAS, Scopus and Google Scholar
- Research which is freely available for redistribution

Submit your manuscript at  
www.biomedcentral.com/submit



Comparison of conventional and 2D-T<sub>2</sub>-Preps in accelerated MRA of the RCA



Vessel sharpness % of the RCA in healthy volunteers, using either a conventional T <sub>2</sub> -Prep or a 2D-T <sub>2</sub> -Prep, for GRAPPA acceleration factors of 1, 3, and 6.						
Acceleration Factor	1.00		3.00		6.00	
T <sub>2</sub> -Prep Type	Conv.	2D	Conv.	2D	Conv.	2D
Mean Vessel Sharpness %	57.35	60.13	57.93	62.02	54.27	60.72
% Difference	4.86		7.07		11.88	
p-value	0.013		0.001		0.000	

**Figure 2** Sample *in vivo* image acquisitions of the right coronary artery (RCA), using either a conventional or 2D-T<sub>2</sub>-Prep, for GRAPPA acceleration factors of 1,3, and 6. The mean vessel sharpness improves proportionally more at higher acceleration factors, demonstrating the additional benefit of a 2D-T<sub>2</sub>-Prep.