

RESEARCH

Open Access



Incidence of postoperative opioid-induced respiratory depression episodes in patients on room air or supplemental oxygen: a post-hoc analysis of the PRODIGY trial

Anthony G. Doufas^{1*}, Mariana L. Laporta², C. Noelle Driver², Fabio Di Piazza³, Marco Scardapane³, Sergio D. Bergese⁴, Richard D. Urman⁵, Ashish K. Khanna^{6,7}, Toby N. Weingarten² and The Prediction of Opioid-induced respiratory Depression In patients monitored by capnoGraphY (PRODIGY) Group Investigators

Abstract

Background Supplemental oxygen (SO) potentiates opioid-induced respiratory depression (OIRD) in experiments on healthy volunteers. Our objective was to examine the relationship between SO and OIRD in patients on surgical units.

Methods This post-hoc analysis utilized a portion of the observational PRediction of Opioid-induced respiratory Depression In patients monitored by capnoGraphY (PRODIGY) trial dataset (202 patients, two trial sites), which involved blinded continuous pulse oximetry and capnography monitoring of postsurgical patients on surgical units. OIRD incidence was determined for patients receiving room air (RA), intermittent SO, or continuous SO. Generalized estimating equation (GEE) models, with a Poisson distribution, a log-link function and time of exposure as offset, were used to compare the incidence of OIRD when patients were receiving SO vs RA.

Results Within the analysis cohort, 74 patients were always on RA, 88 on intermittent and 40 on continuous SO. Compared with when on RA, when receiving SO patients had a higher risk for all OIRD episodes (incidence rate ratio [IRR] 2.7, 95% confidence interval [CI] 1.4–5.1), apnea episodes (IRR 2.8, 95% CI 1.5–5.2), and bradypnea episodes (IRR 3.0, 95% CI 1.2–7.9). Patients with high or intermediate PRODIGY scores had higher IRRs of OIRD episodes when receiving SO, compared with RA (IRR 4.5, 95% CI 2.2–9.6 and IRR 2.3, 95% CI 1.1–4.9, for high and intermediate scores, respectively).

Conclusions Despite oxygen desaturation events not differing between SO and RA, SO may clinically promote OIRD. Clinicians should be aware that postoperative patients receiving SO therapy remain at increased risk for apnea and bradypnea.

Trial registration Clinicaltrials.gov: NCT02811302, registered June 23, 2016.

Prior Presentation A portion of this work was presented as a poster presentation at the 2023 International Anesthesia Research Society (IARS) annual meeting (Denver, CO).

*Correspondence:

Anthony G. Doufas
agdoufas@stanford.edu

Full list of author information is available at the end of the article



© The Author(s) 2023. **Open Access** This article is licensed under a Creative Commons Attribution 4.0 International License, which permits use, sharing, adaptation, distribution and reproduction in any medium or format, as long as you give appropriate credit to the original author(s) and the source, provide a link to the Creative Commons licence, and indicate if changes were made. The images or other third party material in this article are included in the article's Creative Commons licence, unless indicated otherwise in a credit line to the material. If material is not included in the article's Creative Commons licence and your intended use is not permitted by statutory regulation or exceeds the permitted use, you will need to obtain permission directly from the copyright holder. To view a copy of this licence, visit <http://creativecommons.org/licenses/by/4.0/>. The Creative Commons Public Domain Dedication waiver (<http://creativecommons.org/publicdomain/zero/1.0/>) applies to the data made available in this article, unless otherwise stated in a credit line to the data.

Keywords Respiratory depression, Apnea, Supplemental oxygen, Room air, Capnography, Pulse oximetry, Continuous monitoring, Spot check monitoring

Background

Fatal or seriously debilitating consequences of postoperative opioid-induced respiratory depression (OIRD) [1] are rare, however, a large fraction of surgical patients experience prolonged and persistent hypoxemia [2]. Importantly, these patients might be at risk for major postoperative pulmonary complications [3], despite the use of supplemental oxygen (SO) [1, 2, 4].

Oxygen (O₂) is a drug with powerful actions on several aspects of ventilatory control [5]. Through its effect on the peripheral chemoreceptors at the carotid body, O₂ directly suppresses ventilatory drive [6], and decreases the sensitivity of central chemoreceptors to carbon dioxide [7]. In addition, at high inspired fractions, O₂ reduces cerebral blood flow and may thus increase the apparent potency of opioids [8], by raising their concentration at the effect site [9]. If applicable, these effects of SO would tend to enhance hypoventilation to a clinical setting. On the other hand, although SO is necessary to increase oxyhemoglobin saturation in postoperative patients [10], it doesn't seem to affect the number of episodic desaturations [11]. This indicates that when continuous oximetry is the only available monitor, an increase in oxygenation by SO might conceal and potentially delay the detection of severe respiratory depression [12, 13], which, thus, might quickly precipitate to frank apnea and hypoxemia. Expectedly, the situation may become even more critical when during SO, oxygenation is not monitored continuously, but intermittently assessed by nurses, since spot-checks of oxygenation might miss up to 90% of clinical hypoxemia episodes [2].

The purpose of this post-hoc analysis of PRODIGY (PRediction of Opioid-induced respiratory Depression In patients monitored by capnoGraphY) observational trial was to examine the association between oxygen supplementation and the incidence and pattern of OIRD in patients admitted to surgical hospital wards. This is an environment where standard of care monitoring usually consists of spot-checks of oxygenation, respiratory rate, and hemodynamic parameters.

Methods

The PRODIGY trial (registered prior to patient enrollment at clinicaltrials.gov: NCT02811302, principal investigator: Frank J. Overdyk, <https://clinicaltrials.gov/ct2/show/NCT02811302>, date of registration: June 23, 2016) was a prospective, observational trial conducted between

April 2017 and May 2018 in the United States, Europe, and Asia. The trial was approved by each institutional review board or ethics committee, and all patients provided written informed consent before enrollment. This analysis included data from 2 United States trial sites (Brigham & Women's Hospital, Boston, MA and The Ohio State University Wexner Medical Center, Columbus, OH). This manuscript adheres to the applicable Strengthening the Reporting of OBservational studies in Epidemiology (STROBE) guidelines.

Initial trial design

The objective of the original PRODIGY trial was to develop a risk prediction tool to identify patients at risk of OIRD on the medical/surgical unit [14]. Eligible patients included adult patients who were expected to receive parenteral opioids in the medical/surgical unit after a procedure or surgery. Exclusion criteria were: 1) Patients whose hospital stay was anticipated to be < 24 h; 2) Patients who received intrathecal opioids; 3) Patients with American Society of Anesthesiology (ASA) physical status V or higher; 4) Patients with an active Do Not Resuscitate status; 5) Patients who were expected to be ventilated or intubated; 6) Patients unwilling or unable to comply with monitoring procedures; 7) Patients who were part of a vulnerable population; and 8) Patients who were participating in a confounding clinical trial [14]. After arrival on the medical/surgical unit, enrolled patients underwent blinded, continuous pulse oximetry and capnography monitoring (Capnostream™ 20p or 35 portable respiratory monitor, Medtronic, Boulder, CO). The median length of continuous monitoring was 24h (interquartile range 17-26h), during which standard of care spot-check monitoring was performed per site protocol [1]. Supplemental oxygen (SO) was provided based on local site practices.

Definition criteria for OIRD

An OIRD episode was pre-defined as: respiratory rate ≤ 5 breaths/min (bpm), oxygen saturation ≤ 85%, or end-tidal carbon dioxide ≤ 15 or ≥ 60 mm Hg for ≥ 3 min; apnea episode lasting > 30 s; or any respiratory opioid-related adverse event [1]. Potential OIRD episodes were identified by monitor algorithms and independently assessed by a panel of capnography experts, blinded to patient medical history, including SO use, to categorize patients as having either ≥ 1 OIRD episode or no OIRD [1, 15]. Patients with > 1 potential OIRD episode underwent

OIRD adjudication only until the first OIRD episode was confirmed. This adjudicated data was then used to develop the PRODIGY risk prediction tool, which assesses 5 patient characteristics (age > 60 in decades, male sex, sleep-disordered breathing, opioid naivety, and chronic heart failure) to determine whether a patient has low, intermediate, or high risk for OIRD [1].

Objectives

The objective of this post-hoc analysis was to determine whether patients on room air (RA) experience more OIRD episodes, compared with when receiving intermittent or continuous SO. Secondary objectives were to assess the type of OIRD episodes occurring in patients receiving intermittent or continuous SO or on RA, evaluate the association between OIRD episodes during intermittent or continuous SO or on RA as a function of PRODIGY score and finally, examine the frequency of OIRD episodes as a function of the time after the end of surgery.

OIRD episode assessment

This analysis included data from surgical patients enrolled at 2 United States trial sites and utilized the OIRD episode dataset from a previous post-hoc analysis, in which all potential OIRD episodes were adjudicated, including each potential OIRD episode in patients who had > 1 OIRD episode [15]. The incidence of OIRD episode was compared among 3 groups of patients: those always on RA, those with intermittent SO use, and those always receiving SO during continuous monitoring. The subgroup analysis on data from 88 patients with intermittent SO use, was performed to mitigate potential confounding factors that may exist between patients who always received SO and those breathing RA during continuous monitoring.

Statistical analysis

This was a post-hoc analysis, and therefore the sample size was determined by data availability. Patients without complete SO records during the continuous monitoring period were excluded from the analysis. Descriptive and baseline characteristics were reported using mean and standard deviation (SD) or frequencies and percentages for continuous and categorical variables, respectively. The incidence of OIRD episodes was modeled using generalized estimating equation (GEE) models, with a Poisson distribution, a log-link function and time of exposure as offset. Estimated differences between groups were reported as incidence rate ratios (IRR), along with their 95% CI. Subtypes of OIRD, including low respiratory rate, low arterial blood oxygen saturation (SpO₂), and apnea episodes, were also assessed separately using

GEE models. A GEE model was also used to evaluate the incidence of OIRD episodes stratifying the analysis by patient PRODIGY score. All tests were two-sided and p -values < 0.05 were considered statistically significant. Analyses were performed using SAS® Version 9.4 (SAS Institute Inc., Cary, NC).

Results

Participants

Among 258 patients enrolled at 2 United States trial sites in this post-hoc analysis, 56 patients had incomplete SO data records and were excluded from the analysis (Fig. 1). Of the 202 patients in the analysis cohort, 74 remained on RA throughout continuous monitoring on the surgical unit. Forty patients received SO for the entirety of the continuous monitoring period, and 88 patients received intermittent supplemental oxygen during continuous monitoring (Fig. 1). Within these 88 patients, 54 patients started continuous monitoring with SO and discontinued SO later during the monitoring period, and 34 patients started continuous monitoring on RA and received SO later during the monitoring period.

Demographics and medical history

Among 74, 88, and 40 patients on RA, intermittent, or continuous SO during continuous monitoring on the surgical unit, the average age was 49 ± 16 , 53 ± 13 , and 56 ± 14 years, respectively ($p = 0.053$), (Table 1). Most patients were ASA class III, independent of SO use. Patient PRODIGY score, which was retrospectively calculated and represents the risk of OIRD, was high (Additional File 1) for 19% of patients always on RA, 26% of patients intermittently receiving SO, and 33% of patients always on SO. Between 81 and 85% of patients were opioid naïve, and > 98% received multiple opioids or concurrent central nervous system (CNS)/sedating medication, regardless of SO use. Postoperative morphine milligram equivalents did not differ significantly among groups (Table 1).

Respiratory depression occurrence

At least one OIRD episode occurred in 54% ($N = 40/74$), 60% ($N = 53/88$), and 63% ($N = 25/40$) of patients always on RA, intermittently receiving SO, and always on SO, respectively (Table 2). Compared with patients always on RA or receiving intermittent SO, the number of OIRD episodes per patient per monitored hour was significantly higher in patients always on SO ($p = 0.017$). Patients always on SO also had a significantly higher number of apnea episodes per hour, compared to patients always on RA or receiving intermittent SO ($p = 0.005$). The occurrence of respiratory rate and SpO₂ episodes did not differ between the 3 groups (Table 2).

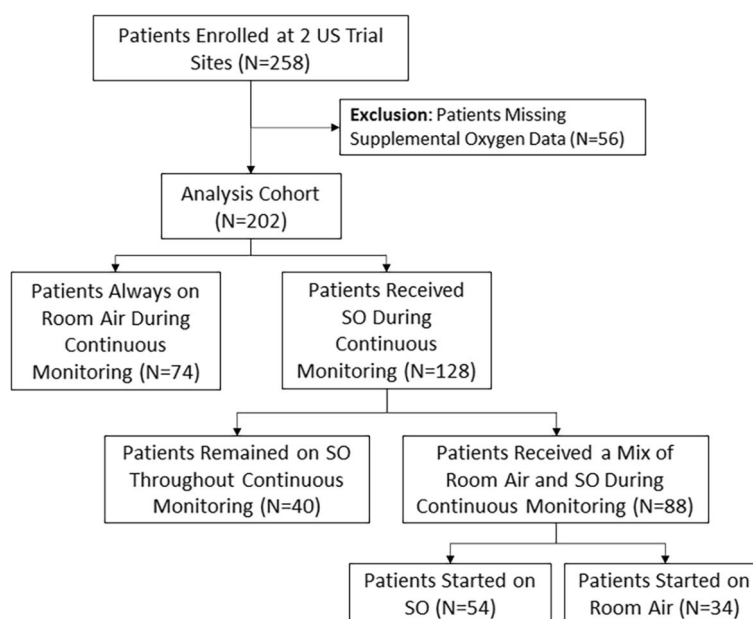


Fig. 1 Flow chart of PRODIGY patients from 2 trial sites receiving supplemental oxygen during continuous monitoring. Abbreviations: PRODIGY = PRediction of Opioid-induced respiratory Depression In patients monitored by capnoGraphY; SO = Supplemental oxygen

To account for internal correlation within patients between the time on RA and SO, a GEE model was used. Based on this analysis, the incidence rate ratio for OIRD episodes was 2.7 (95% CI 1.4–5.1, $p=0.0021$), and the incidence rate ratios for apnea episodes or respiratory rate episodes were 2.8 (95% CI 1.5–5.2, $p=0.0011$) and 3.0 (95% CI 1.2–7.9, $p=0.0233$), respectively, when receiving SO (Fig. 2A). These results were confirmed by a subgroup analysis using the 88 patients who received intermittent SO, to control for potential differences between patients always on SO and patients always on RA (Additional File 2). The incidence rate ratio for OIRD episodes was also significantly higher among patients with a high or intermediate PRODIGY score when they were receiving SO (IRR 4.5, 95% CI 2.2–9.6, $p<0.0001$ and IRR 2.3, 95% CI 1.1–4.9, $p=0.0247$, respectively), (Fig. 2B). In contrast, patients with a low PRODIGY score did not have a significantly different incidence rate ratio for OIRD episodes between when receiving RA and SO (IRR 0.5, 95% CI 0.2–1.0, $p=0.0594$), (Fig. 2B). Similar results were obtained using a GEE model to determine the IRR for OIRD episodes in the 88 patients who received intermittent SO (Additional File 2).

Timing of OIRD episodes

The timing of when OIRD episodes occurred in relation to the start of SO was assessed. Sixty-three percent of patients who started continuous monitoring

on SO experienced ≥ 1 OIRD episode ($N=34/54$), compared to 56% of patients who started continuous monitoring on RA ($N=19/34$), (Table 3). Of the 34 patients who started continuous monitoring on SO, 77% ($N=26/34$) experienced ≥ 1 OIRD episode before switching to RA. Among the patients who started continuous monitoring on RA, 47% ($N=9/19$) experienced ≥ 1 OIRD episode before SO began, and 53% ($N=10/19$) experienced ≥ 1 OIRD episode after SO began (Table 3).

The frequency of patients with ≥ 1 OIRD episode was also assessed as a function of the number of hours after surgery, comparing 40 patients who received SO throughout continuous monitoring, 74 patients always on RA, and 88 patients who received a mix of RA and SO during continuous monitoring. In the first 8–16h after surgery, there was a higher incidence of OIRD among patients who were always receiving SO (Fig. 3A, red line). In contrast, the patients receiving a mix of RA and SO, or who were always on RA, had a lower incidence of OIRD in the first 16h after surgery, and an increased incidence of OIRD 16–24h after surgery (Fig. 3A, blue line). The incidence of apnea events followed a similar trend, with a higher incidence of OIRD among patients always receiving SO in the first 8–16h after surgery, and a higher incidence of OIRD among patients receiving RA or SO 16–24h after surgery (Fig. 3B).

Table 1 Characteristics of patients breathing room air, intermittently receiving SO, or always receiving SO

Patient Characteristics	Always Room Air (n = 74)	Intermittent SO (n = 88)	Always SO (n = 40)	p-value
Age (yrs) (Mean ± SD)	49.4 ± 15.5	52.6 ± 12.9	56.0 ± 13.9	0.053
Body Mass Index (kg/m²) (Mean ± SD)	36.6 ± 12.3	36.2 ± 11.1	34.5 ± 12.6	0.440
Current Smoker	8.1% (6/74)	8.0% (7/88)	5.0% (2/40)	0.807
Oxygen Use at Home	0.0% (0/74)	1.1% (1/88)	2.5% (1/40)	1.0
ASA Physical Status				
ASA I	0.0% (0/74)	0.0% (0/88)	0.0% (0/40)	0.603
ASA II	28.4% (21/74)	22.7% (20/88)	30.0% (12/40)	
ASA III	71.6% (53/74)	76.1% (67/88)	67.5% (27/40)	
ASA IV	0.0% (0/74)	1.1% (1/88)	2.5% (1/40)	
PRODIGY Score				
Low (< 8)	53.4% (39/73)	43.2% (38/88)	27.5% (11/40)	0.123
Intermediate (8–14)	27.4% (20/73)	30.7% (27/88)	40.0% (16/40)	
High (≥ 15)	19.2% (14/73)	26.1% (23/88)	32.5% (13/40)	
SO Flow Rate (L/min) (Mean ± SD)	NA	2.1 ± 0.7	1.9 ± 0.7	0.538
Surgical Demographics				
High-Risk Surgery ^a	6.8% (5/74)	11.4% (10/88)	17.5% (7/40)	0.210
Open Surgery	12.2% (9/74)	17.0% (15/88)	10.0% (4/40)	0.490
Opioid Demographics				
Opioid Naive	81.1% (60/74)	84.1% (74/88)	85.0% (34/40)	0.827
Multiple Opioids or concurrent CNS/Sedating Medication	100.0% (74/74)	97.7% (86/88)	100.0% (40/40)	0.270
Opioid Morphine Milligram Equivalents (post-surgery) (Median, IQR)	26.9 (7.6– 90.0)	27.1 (15.3– 60.2)	21.5 (12.4– 76.6)	0.798
Medical History				
Cardiac Disorders				
Aortic Aneurysm	0.0% (0/74)	2.3% (2/88)	0.0% (0/40)	0.679
Aortic Valve Disease	0.0% (0/74)	3.4% (3/88)	0.0% (0/40)	0.309
Chronic Heart Failure	1.4% (1/73)	2.3% (2/88)	0.0% (0/40)	1.000
Coronary Artery Disease	4.1% (3/73)	1.1% (1/88)	5.0% (2/40)	0.353
Hypertension	43.2% (32/74)	56.8% (50/88)	47.5% (19/40)	0.214
Mitral Valve Disease	1.4% (1/74)	1.1% (1/88)	0.0% (0/40)	1.000
Myocardial Infarction	0.0% (0/73)	2.3% (2/88)	0.0% (0/40)	0.680
Sepsis	1.4% (1/74)	1.1% (1/88)	0.0% (0/40)	1.000
Metabolism and Nutrition Disorders				
Diabetes—Type I	1.4% (1/74)	3.4% (3/88)	0.0% (0/40)	0.537
Diabetes—Type II	21.6% (16/74)	14.8% (13/88)	15.0% (6/40)	0.471
Kidney Failure	1.4% (1/74)	2.3% (2/88)	2.5% (1/40)	1.000
Respiratory Disorders				
Acute Bronchitis	0.0% (0/74)	1.1% (1/88)	5.0% (2/40)	0.149
Asthma	23.0% (17/74)	21.6% (19/88)	7.5% (3/40)	0.105
Chronic Bronchitis	0.0% (0/74)	1.1% (1/88)	0.0% (0/40)	1.000
Chronic Obstructive Pulmonary	5.4% (4/74)	4.5% (4/88)	5.0% (2/40)	1.000
Pneumonia	0.0% (0/74)	2.3% (2/88)	5.0% (2/40)	0.191
Sleep Disordered Breathing^b	14.9% (11/74)	20.5% (18/88)	25.0% (10/40)	0.398
Vascular Disorders				
Cerebral Aneurysm	2.7% (2/74)	4.5% (4/88)	0.0% (0/40)	0.427
Peripheral Vascular Disease	1.4% (1/74)	2.3% (2/88)	2.5% (1/40)	1.000
Stroke	4.1% (3/73)	3.4% (3/88)	2.5% (1/40)	1.000
Transient Ischemic Attack	2.7% (2/73)	1.1% (1/88)	2.5% (1/40)	0.678

Abbreviations SO Supplemental oxygen, SD Standard deviation, ASA American Society of Anesthesiologists, PRODIGY Prediction of Opioid-induced respiratory Depression In patients monitored by capnography, CNS Central nervous system, IQR Interquartile range, NA Not applicable, L Liters, min, Minute, ESC/ESA European Society of Cardiology/European Society of Anaesthesiology

^a High-risk surgery was defined using the revised ESC/ESA guidelines on non-cardiac surgery

^b Known or suspected sleep-disordered breathing included medical history of obstructive sleep apnea, the use of continuous positive airway pressure (CPAP), or confirmation of the Snoring, Tiredness, Observed apnea, blood Pressure (STOP) questions in the Snoring, Tiredness, Observed apnea, blood Pressure, Body mass index, Age, Neck circumference and Gender (STOP-BANG) questionnaire

Table 2 Respiratory depression occurrence when patients were breathing room air, intermittently receiving SO, or always receiving SO

Respiratory Depression Episode	Always Room Air (n = 74)	Intermittent SO (n = 88)	Always SO (n = 40)	p-value
≥ 1 OIRD Episode				
Percent of patients with ≥ 1 OIRD episode (n/N)	54.1% (40/74)	60.2% (53/88)	62.5% (25/40)	0.615
Number of OIRD episodes per patient (Median, IQR)	4.5 (2.0- 9.5)	6.0 (2.0- 18.0)	8.0 (2.0- 20.0)	0.420
Number of OIRD episodes per patient per monitored hour (Median, IQR)	0.3 (0.1- 0.4)	0.3 (0.1- 0.6)	0.9 (0.2- 1.3)	0.017
Respiratory Depression Episode Subtype				
≥ 1 Apnea Episode				
Percent of patients with ≥ 1 apnea episode	48.6% (36/74)	56.8% (50/88)	60.0% (24/40)	0.427
Number of apnea episodes per patient (Median, IQR)	4.0 (2.0- 9.0)	5.0 (2.0- 17.0)	8.0 (2.5- 18.5)	0.238
Number of apnea episodes per patient per monitored hour (Median, IQR)	0.2 (0.1- 0.4)	0.3 (0.1- 0.6)	0.7 (0.3- 1.3)	0.005
≥ 1 Respiratory Rate Episode				
Percent of patients with ≥ 1 respiratory rate episodes	13.5% (10/74)	19.3% (17/88)	12.5% (5/40)	0.488
Number of respiratory rate episodes per patient (Median, IQR)	1.0 (1.0- 1.0)	1.0 (1.0- 2.0)	3.0 (2.0- 3.0)	0.096
Number of RR episodes per patient per monitored hour (Median, IQR)	0.1 (0.0- 0.1)	0.1 (0.0- 0.1)	0.1 (0.1- 0.1)	0.108
≥ 1 SpO₂ Episode				
Percent of patients with ≥ 1 SpO ₂ episodes	9.5% (7/74)	9.1% (8/88)	12.5% (5/40)	0.825
Number of SpO ₂ episodes per patient (Median, IQR)	3.0 (1.0- 9.0)	1.0 (1.0- 2.5)	1.0 (1.0- 3.0)	0.157
Number of SpO ₂ episodes per patient per monitored hour (Median, IQR)	0.1 (0.1- 0.5)	0.1 (0.0- 0.1)	0.0 (0.0- 0.1)	0.241

Abbreviations SO, Supplemental oxygen, OIRD Opioid-induced respiratory depression, IQR Interquartile range

Discussion

This post-hoc analysis estimated that compared with when patients were on RA, SO was associated with a 2- to threefold increase in the rates of apnea and respiratory rate depression episodes. The design of PRODIGY trial, as well as the lack of strict protocolized criteria for the initiation of SO, do not allow for any safe conclusions regarding the nature of the association between SO and respiratory depression. Even though we cannot exclude a potential role for SO in promoting respiratory

depression, the most parsimonious explanation for the observed association is that patients who were at higher risk for respiratory depression were also more likely to receive SO. According to this explanation, the decision of healthcare providers for SO treatment is primarily based on diagnoses and patient-related factors that are widely perceived to heighten the risk for postoperative respiratory depression. However, this is not supported by our findings, since, as shown in Table 1, the most important of these OIRD risk markers, as well as

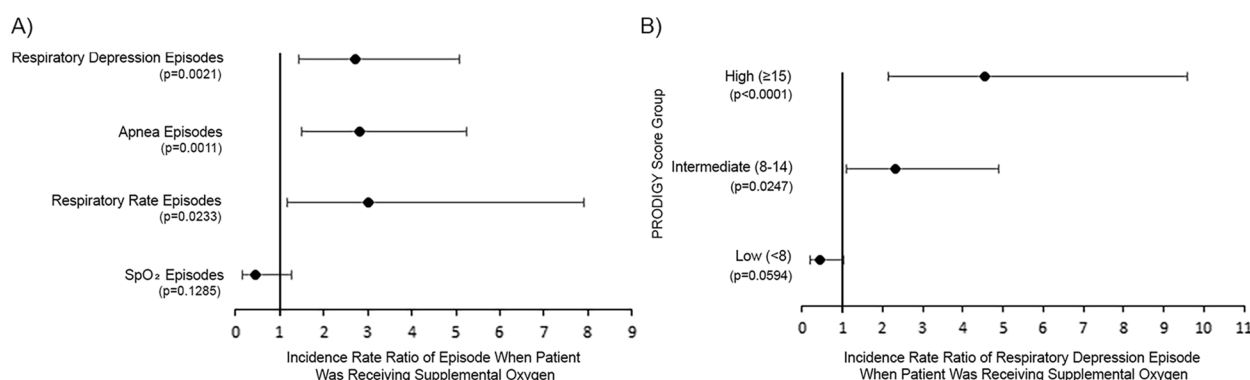


Fig. 2 Generalized estimating equation model for **A** the incidence rate ratio of respiratory depression episodes in patients during times of supplemental oxygen, compared with breathing room air, and **B** the incidence rate ratio of respiratory depression episodes in patients on supplemental oxygen, compared with breathing room air, as a function of PRODIGY score. Analysis includes full dataset (N=202)

Table 3 Incidence of OIRD and timing of SO initiation in patients intermittently receiving SO

Supplemental Oxygen Therapy	Percentage of Patients with ≥ 1 Respiratory Depression Episode
Patient started on supplemental oxygen	63.0% (34/54)
OIRD occurred before room air	76.5% (26/34)
OIRD occurred after room air	23.5% (8/34)
Patient started on room air	55.9% (19/34)
OIRD occurred before supplemental oxygen	47.4% (9/19)
OIRD occurred after supplemental oxygen	52.6% (10/19)

Abbreviations OIRD Opioid-induced respiratory depression

the use of postoperative opioids and sedatives, did not differ among patients on RA, and intermittent or continuous SO. Furthermore, the fraction of patients with a high risk for postoperative respiratory depression, as estimated by the PRODIGY score, did not differ among

the groups. The PRODIGY score was devised retrospectively from data obtained via continuous oximetry and capnography monitoring of this same patient cohort. While the healthcare providers who initiated SO were blinded to these data and based their decision

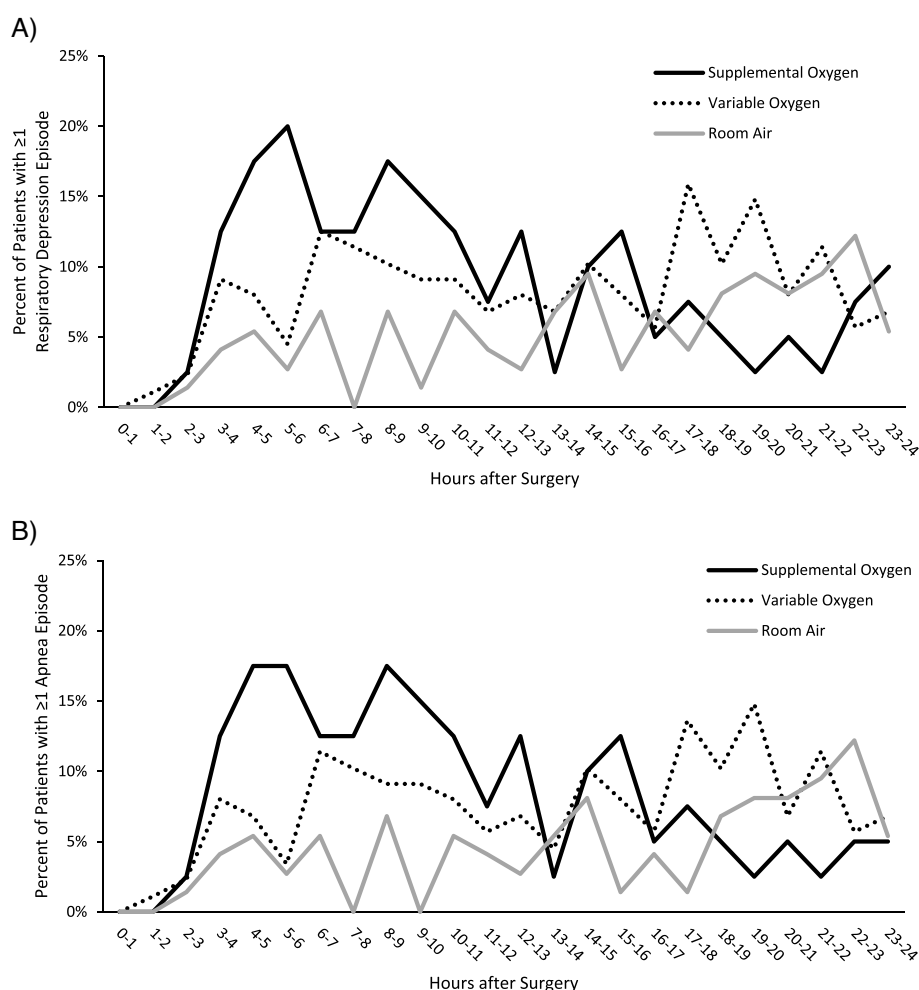


Fig. 3 Percentage of patients with **A** ≥ 1 respiratory depression episode and **B** ≥ 1 apnea episode as a function of the length of time after surgery. The percent of patients is a population average and does not account for times when continuous monitoring transiently paused

on generally accepted patient risk profiles for OIRD, we cannot exclude the possibility that their SO (and/or other) treatment decisions, might have influenced the development of PRODIGY score.

Most observational studies that have examined the use of SO in postoperative patients have focused on its efficacy in preventing or treating hypoxemia and provided variable results, with some supporting a beneficial effect [16–18] and others underlining the ineffectiveness of SO to abolish episodic arterial desaturations that are mainly associated with sleep- or sedation-induced ventilatory disturbances [4, 10, 19]. The use of continuous pulse oximetry monitoring, on the other hand, in contrast to the intermittent SpO₂ spot-checks [2], has been shown to increase the detection of hypoxemia, and therefore the associated use of SO and/ or naloxone, compared with a group of patients without pulse oximetry monitoring [20]. This is in support of the evidence that the use of continuous pulse oximetry as a sole respiratory monitor in patients on SO might mask the development of hypoventilation [12, 13, 21], potentially precipitating a critical OIRD event in an otherwise well-oxygenated patient.

We postulate that in our cohort, although healthcare providers might have initiated SO based on the criteria discussed above, SO maintenance and intermittent monitoring of oxygenation via pulse oximetry spot-checks, may have precipitated apnea and respiratory depression by concealing hypoventilation in well-saturated patients. Importantly, the majority of the overall 46% incidence of OIRD was determined by capnography, and only a small portion (8%) of it constituted arterial desaturation episodes (i.e., SpO₂ ≤ 85% for ≥ 3 min), reflecting the fact that a large fraction (62%) of the PRODIGY patients received SO during the monitoring period. Although we cannot exclude a physiological effect of SO on the development of OIRD, our findings support the hypothesis that patients at high risk for OIRD, or those with borderline oxygenation, might have been started on SO, which in turn could have masked a state of escalating hypoventilation, eventually leading to OIRD.

Decreased wakefulness is an important contributory characteristic of pharmacologically induced respiratory depression in postoperative patients [22]. Opioids and residual anesthetics, both directly and via reducing the cortical input to central respiratory control, increase ventilatory instability, promoting the recurrence of apneas/hypopnea episodes that may lead to hypoxemia, even in the presence of SO [19, 23, 24]. Furthermore, both hypoxemia [25] and the transition between sleep and wakefulness, have been shown to exacerbate ventilatory instability, whereas hyperoxia

during sleep was found to promote stable breathing [26–28]. In our cohort, patients who were treated with SO throughout the monitoring period showed a peak OIRD rate in the early evening hours (8–16h after surgery), whereas those treated with a mix of RA and SO, or on RA only, experienced a higher incidence of OIRD between 16 and 24h after surgery (Fig. 3). This is an interesting finding, because, according to a previous analysis of the same patient cohort, the rate of *initial* OIRD episodes peaked in the afternoon to early evening hours while the peak rate of *all* OIRD episodes occurred in early morning [15], and might indicate that applying (and maintaining) SO early in the postoperative period may be associated with better stabilization of breathing later during the night and early morning hours when ventilatory instability and higher number of recurring arterial desaturation events have been associated with increased risk of OIRD [29]. In contrast, the application of SO on an “if needed” basis (i.e., mix of SO and RA) on patients who have already developed signs of OIRD and/or hypoxemia, does not seem to affect the natural course of postoperative respiratory depression.

Limitations

The findings of this post-hoc analysis need to be seen under the light of existing limitations. The use of SO in our cohort was neither randomized, nor dictated by any protocolized criteria, but was determined by local hospital policies and healthcare providers’ judgement. Supplemental O₂ is not a baseline variable, but it is a time-varying variable, and could be continuous during the entire monitoring period or discontinued once or several times. In this setting, OIRD episodes occurring on SO could be subsequent to episodes occurring on RA. The incidence and frequency of respiratory rate and SpO₂ episodes were very low and statistical models based on these values could be affected by sample size.

Conclusions

Although in general oxygen supplementation improves oxygenation in postoperative patients, its presence does not prevent pharmacologically or opioid-induced respiratory depression. Clinicians should practice caution when providing oxygen therapy in that setting and ensure that patients are monitored sufficiently to confirm proper ventilation and intervene before patient deterioration. This post-hoc analysis does not provide a definite answer to the examined relationship between supplemental oxygen therapy and postoperative monitoring of respiration and should be seen as an evidence source for generating future hypotheses.

Abbreviations

ASA	American Society of Anesthesiologists
CI	Confidence interval
CNS	Central nervous system
GEE	Generalized Estimating Equation
IRR	Incidence rate ratio
O ₂	Oxygen
OIRD	Opioid-induced respiratory depression
OSA	Obstructive sleep apnea
PRODIGY	Prediction of Opioid-induced respiratory Depression In patients monitored by capnoGraphY
RA	Room air
SD	Standard deviation
SO	Supplemental oxygen
SpO ₂	Arterial blood oxygen saturation
STROBE	Strengthening the Reporting of Observational studies in Epidemiology guideline

Supplementary Information

The online version contains supplementary material available at <https://doi.org/10.1186/s12871-023-02291-x>.

Additional file 1. PRODIGY score. Patient characteristics are assigned a point value, the sum of which determines the patient PRODIGY score (<8 points = low risk; ≥8 and <15 points = intermediate risk; ≥15 points = high risk for opioid-induced respiratory depression).

Additional file 2. Generalized estimating equation model for A) the incidence rate ratio of respiratory depression episodes in patients during supplemental oxygen, compared with when on room air, and B) the incidence rate ratio of respiratory depression episodes in patients on intermittent SO (N=88).

Acknowledgements

Statistical support was provided in part by Ivan Merlo, MS of Medtronic (Rome, Italy). Medical writing support was provided by Katherine E. Liu, PhD of Medtronic (Minneapolis, MN).

PRODIGY GROUP INVESTIGATORS

Ashish K. Khanna, MD^{6,7}; Sergio D. Bergese, MD⁴; Carla R. Jungquist, NP, PhD⁸; Hiroshi Morimatsu, MD, PhD⁹; Shoichi Uezono, MD¹⁰; Simon Lee, MD¹¹; Lian Kah Ti, MBBS, MMed¹²; Richard D. Urman, MD⁵; Robert McIntyre Jr, MD¹³; Carlos Tornero, MD, PhD¹⁴; Albert Dahan, MD, PhD¹⁵; Leif Saager, MD, MMM^{16,17}; Toby N. Weingarten, MD²; Maria Wittmann, MD¹⁸; Dennis Auckley, MD¹⁹; Luca Brazzi, MD, PhD²⁰; Morgan Le Guen, MD, PhD²¹; Roy Soto, MD²²; Frank Schramm, MD²³; Wolfgang Buhre, MD²⁴; Frank J. Overdyk, MD²⁵

⁶Section on Critical Care Medicine, Department of Anesthesiology, Wake Forest Center for Biomedical Informatics, Perioperative Outcomes and Informatics Collaborative (POIC), Wake Forest University School of Medicine, Winston-Salem, North Carolina

⁷Outcomes Research Consortium, Cleveland, Ohio

⁴Department of Anesthesiology and Neurological Surgery, Stony Brook University School of Medicine, Stony Brook, New York

⁸University at Buffalo School of Nursing, Buffalo, New York

⁹Department of Anesthesiology and Resuscitology, Okayama University Hospital, Okayama, Japan

¹⁰Jikei University School of Medicine, Tokyo, Japan

¹¹Department of Anesthesiology, Emory University, Atlanta, Georgia

¹²Department of Anaesthesia, National University of Singapore, Singapore

⁵Department of Anesthesiology, The Ohio State University and Wexner Medical Center, Columbus, Ohio

¹³Department of Surgery, University of Colorado School of Medicine, Aurora, Colorado

¹⁴Department of Anesthesiology, Resuscitation and Pain Therapeutics, Hospital Clínico Universitario de Valencia, Valencia, Spain

¹⁵Department of Anesthesiology, Leiden University Medical Center, Leiden, the Netherlands

¹⁶Department of Anesthesiology, University of Michigan Medical School, Ann Arbor, Michigan

¹⁷Klinik für Anästhesiologie, Universitätsmedizin Göttingen, Göttingen, Germany

²Department of Anesthesiology and Perioperative Medicine, Mayo Clinic, Rochester, Minnesota

¹⁸Department of Anaesthesiology, University Hospital Bonn, Bonn, Germany

¹⁹Division of Pulmonary, Critical Care, and Sleep Medicine, MetroHealth Medical Center, Case Western Reserve University, Cleveland, Ohio

²⁰Department of Anesthesia, Intensive Care and Emergency, University of Turin, Turin, Italy

²¹Department of Anaesthesiology, Hôpital Foch, Suresnes, France

²²Department of Anesthesiology, Beaumont Hospital, Royal Oak, Michigan

²³Department of Anesthesiology, Providence Regional Medical Center, Everett, Washington

²⁴Department of Anesthesiology, University Medical Center, Maastricht, the Netherlands

²⁵Trident Anesthesia Group, LLC, Charleston, South Carolina.

Authors' contributions

AGD, FDP, MS, and TNW helped design the analysis. MLL, CND, AKK, SDB, RDU, and TNW helped acquire the data and FDP and MS helped analyze the data. AGD drafted the manuscript. All authors helped interpret data, revise the manuscript, and read and approved the final manuscript.

Funding

The trial was sponsored by Medtronic, which contributed to the original trial design, data collection and analysis. The authors had full access to trial data and final responsibility for the decision to submit for publication. The authors were not paid to write this article by the sponsor or any other agency.

Availability of data and materials

The data that support the findings of this study were made available from Medtronic. Restrictions apply to the availability of these data, which are not publicly available. Data are however available from the corresponding author (Anthony Doufas, agdoufas@stanford.edu) upon reasonable request and with permission of Medtronic.

Declarations

Ethics approval and consent to participate

Ethics approval was collected for each trial site (Partners Human Research Committee, Protocol # 2017P000196/PHS, Brigham & Women's Hospital, Boston, MA and Western Institutional Review Board, Protocol # COVMO0560-PRODIGY, The Ohio State University Wexner Medical Center, Columbus, OH). Written informed consent was required before a patient was enrolled in the trial. All methods were carried out in accordance with relevant guidelines and regulations (Declaration of Helsinki).

Consent for publication

Not applicable.

Competing interests

TNW, AKK, SDB, and RDU or their institutions received financial support from Medtronic to fund the original trial. In addition, TNW reports personal fees from Merck; RDU reports funding and/or personal fees from Merck, Medtronic, AcelRx, and Pfizer; AKK reports consulting fees from Medtronic, Edwards Lifesciences, Philips Research North America, GE Healthcare, Baxter, Retia Medical, Caretaker Medical, Trevena Pharmaceuticals, Renibus Therapeutics and support via an NIH/NCATS KL2 award for a trial of continuous portable monitoring on hospital general care floors. FDP and MS report full time employment with Medtronic during the time of the work. MLL, CND, and AGD declare that they have no competing interests.

Author details

¹Department of Anesthesiology, Perioperative and Pain Medicine, Center for Sleep and Circadian Sciences, Stanford University School of Medicine, 300 Pasteur Drive, H3580, Stanford, San Francisco, CA 94305-5640, USA. ²Department of Anesthesiology and Perioperative Medicine, Mayo Clinic, Rochester, MN, USA. ³Medtronic Core Clinical Solutions, Global Clinical Data Solutions, Rome, Italy. ⁴Department of Anesthesiology and Neurological Surgery, Stony

Brook University School of Medicine, Stony Brook, New York, USA. ⁵Department of Anesthesiology, The Ohio State University and Wexner Medical Center, Columbus, OH, USA. ⁶Section On Critical Care Medicine, Department of Anesthesiology, Wake Forest Center for Biomedical Informatics, Perioperative Outcomes and Informatics Collaborative (POIC), Wake Forest University School of Medicine, Winston-Salem, North Carolina, USA. ⁷Outcomes Research Consortium, Cleveland, OH, USA.

Received: 20 June 2023 Accepted: 22 September 2023

Published online: 04 October 2023

References

1. Khanna AK, Bergese SD, Jungquist CR, Morimatsu H, Uezono S, Lee S, et al. Prediction of opioid-induced respiratory depression on inpatient wards using continuous capnography and oximetry: an international prospective. *Observ Trial Anesth Analg*. 2020;131(4):1012–24.
2. Sun Z, Sessler DI, Dalton JE, Devereaux PJ, Shahinyan A, Naylor AJ, et al. Postoperative hypoxemia is common and persistent: a prospective blinded observational study. *Anesth Analg*. 2015;121(3):709–15.
3. Ramachandran SK, Thompson A, Pandit JJ, Devine S, Shanks AM. Retrospective observational evaluation of postoperative oxygen saturation levels and associated postoperative respiratory complications and hospital resource utilization. *PLoS ONE*. 2017;12(5): e0175408.
4. Catley DM, Thornton C, Jordan C, Lehane JR, Royston D, Jones JG. Pronounced, episodic oxygen desaturation in the postoperative period: its association with ventilatory pattern and analgesic regimen. *Anesthesiology*. 1985;63(1):20–8.
5. Dempsey TM, Lapinsky SC, Melnychuk E, Lapinsky SE, Reed MJ, Niven AS. Special populations: disaster care considerations in chronically ill, pregnant, and morbidly obese patients. *Crit Care Clin*. 2019;35(4):677–95.
6. Blain GM, Smith CA, Henderson KS, Dempsey JA. Contribution of the carotid body chemoreceptors to eupneic ventilation in the intact, unanesthetized dog. *J Appl Physiol (Bethesda, Md : 1985)*. 2009;106(5):1564–73.
7. Blain GM, Smith CA, Henderson KS, Dempsey JA. Peripheral chemoreceptors determine the respiratory sensitivity of central chemoreceptors to CO₂. *J Physiol*. 2010;588(Pt 13):2455–71.
8. Niesters M, Mahajan RP, Aarts L, Dahan A. High-inspired oxygen concentration further impairs opioid-induced respiratory depression. *Br J Anaesth*. 2013;110(5):837–41.
9. Dahan A, Douma M, Olofsen E, Niesters M. High inspired oxygen concentration increases the speed of onset of remifentanyl-induced respiratory depression. *Br J Anaesth*. 2016;116(6):879–80.
10. Jones JG, Jordan C, Scudder C, Locke DA, Barrowcliffe M. Episodic postoperative oxygen desaturation: the value of added oxygen. *J R Soc Med*. 1985;78(12):1019–22.
11. Rosenberg J, Pedersen MH, Gebuhr P, Kehlet H. Effect of oxygen therapy on late postoperative episodic and constant hypoxaemia. *Br J Anaesth*. 1992;68(1):18–22.
12. Fu ES, Downs JB, Schweiger JW, Miguel RV, Smith RA. Supplemental oxygen impairs detection of hypoventilation by pulse oximetry. *Chest*. 2004;126(5):1552–8.
13. Lam T, Nagappa M, Wong J, Singh M, Wong D, Chung F. Continuous pulse oximetry and capnography monitoring for postoperative respiratory depression and adverse events: a systematic review and meta-analysis. *Anesth Analg*. 2017;125(6):2019–29.
14. Khanna AK, Overdyk FJ, Greening C, Di Stefano P, Buhre WF. Respiratory depression in low acuity hospital settings-Seeking answers from the PRODIGY trial. *J Crit Care*. 2018;47:80–7.
15. Driver CN, Laporta ML, Bergese SD, Urman RD, Di Piazza F, Overdyk FJ, et al. Frequency and temporal distribution of postoperative respiratory depressive events. *Anesth Analg*. 2021;132(5):1206–14.
16. Canet J, Ricos M, Vidal F. Early postoperative arterial oxygen desaturation. Determining factors and response to oxygen therapy. *Anesth Analg*. 1989;69(2):207–12.
17. Daley MD, Norman PH, Colmenares ME, Sandler AN. Hypoxaemia in adults in the post-anaesthesia care unit. *Can J Anaesth*. 1991;38(6):740–6.
18. Stone JG, Cozine KA, Wald A. Nocturnal oxygenation during patient-controlled analgesia. *Anesth Analg*. 1999;89(1):104–10.
19. Drummond GB, Stedul K, Kingshott R, Rees K, Nimmo AF, Wraith P, et al. Automatic CPAP compared with conventional treatment for episodic hypoxemia and sleep disturbance after major abdominal surgery. *Anesthesiology*. 2002;96(4):817–26.
20. Moller JT, Johannessen NW, Espersen K, Ravlo O, Pedersen BD, Jensen PF, et al. Randomized evaluation of pulse oximetry in 20,802 patients: II Perioperative events and postoperative complications. *Anesthesiology*. 1993;78(3):445–53.
21. Overdyk FJ, Carter R, Maddox RR, Callura J, Herrin AE, Henriquez C. Continuous oximetry/capnometry monitoring reveals frequent desaturation and bradypnea during patient-controlled analgesia. *Anesth Analg*. 2007;105(2):412–8.
22. Doufas AG, Weingarten TN. Pharmacologically induced ventilatory depression in the postoperative patient: a sleep-wake state-dependent perspective. *Anesth Analg*. 2021;132(5):1274–86.
23. Chung F, Abdullah HR, Liao P. STOP-bang questionnaire: a practical approach to screen for obstructive sleep apnea. *Chest*. 2016;149(3):631–8.
24. Chung F, Liao P, Yegneswaran B, Shapiro CM, Kang W. Postoperative changes in sleep-disordered breathing and sleep architecture in patients with obstructive sleep apnea. *Anesthesiology*. 2014;120(2):287–98.
25. Chowdhuri S, Shanidze I, Pierchala L, Belen D, Mateika JH, Badr MS. Effect of episodic hypoxia on the susceptibility to hypocapnic central apnea during NREM sleep. *J Appl Physiol (Bethesda, Md : 1985)*. 2010;108(2):369–77.
26. Chowdhuri S, Sinha P, Pranathigeswaran S, Badr MS. Sustained hyperoxia stabilizes breathing in healthy individuals during NREM sleep. *J Appl Physiol (Bethesda, Md : 1985)*. 2010;109(5):1378–83.
27. Edwards BA, Sands SA, Owens RL, White DP, Genta PR, Butler JP, et al. Effects of hyperoxia and hypoxia on the physiological traits responsible for obstructive sleep apnoea. *J Physiol*. 2014;592(20):4523–35.
28. Liao P, Wong J, Singh M, Wong DT, Islam S, Andrawes M, et al. Postoperative oxygen therapy in patients with OSA: a randomized controlled trial. *Chest*. 2017;151(3):597–611.
29. Liew LQN, Law LSC, Seet E, Di Piazza F, Liu KE, Sim MA, et al. Nocturnal oxygen desaturation index correlates with respiratory depression in post-surgical patients receiving opioids - a post-Hoc analysis from the prediction of opioid-induced respiratory depression in patients monitored by capnography (PRODIGY) Study. *Nat Sci Sleep*. 2022;14:805–17.

Publisher's Note

Springer Nature remains neutral with regard to jurisdictional claims in published maps and institutional affiliations.

Ready to submit your research? Choose BMC and benefit from:

- fast, convenient online submission
- thorough peer review by experienced researchers in your field
- rapid publication on acceptance
- support for research data, including large and complex data types
- gold Open Access which fosters wider collaboration and increased citations
- maximum visibility for your research: over 100M website views per year

At BMC, research is always in progress.

Learn more biomedcentral.com/submissions

