

RESEARCH ARTICLE

Open Access

The genomic basis for the evolution of a novel form of cellular reproduction in the bacterium *Epulopiscium*

David A Miller¹, Garret Suen², Kendall D Clements³ and Esther R Angert^{1*}

Abstract

Background: *Epulopiscium* sp. type B, a large intestinal bacterial symbiont of the surgeonfish *Naso tonganus*, does not reproduce by binary fission. Instead, it forms multiple intracellular offspring using a process with morphological features similar to the survival strategy of endospore formation in other Firmicutes. We hypothesize that intracellular offspring formation in *Epulopiscium* evolved from endospore formation and these two developmental programs share molecular mechanisms that are responsible for the observed morphological similarities.

Results: To test this, we sequenced the genome of *Epulopiscium* sp. type B to draft quality. Comparative analysis with the complete genome of its close, endospore-forming relative, *Cellulosilyticum lentocellum*, identified homologs of well-known sporulation genes characterized in *Bacillus subtilis*. Of the 147 highly conserved *B. subtilis* sporulation genes used in this analysis, we found 57 homologs in the *Epulopiscium* genome and 87 homologs in the *C. lentocellum* genome.

Conclusions: Genes coding for components of the central regulatory network which govern the expression of forespore and mother-cell-specific sporulation genes and the machinery used for engulfment appear best conserved. Low conservation of genes expressed late in endospore formation, particularly those that confer resistance properties and encode germinant receptors, suggest that *Epulopiscium* has lost the ability to form a mature spore. Our findings provide a framework for understanding the evolution of a novel form of cellular reproduction.

Keywords: Developmental process, Endospore, Sporulation, Spore, Endospore-forming bacteria, Binary fission, Intracellular offspring

Background

Endospore formation is an ancient and complex developmental process exclusive to certain bacteria within the Firmicutes [1,2]. Endospores endure environmental conditions that would kill most other bacterial cells, including prolonged periods of insufficient nutrients, moderate levels of organic solvents, exposure to phage, extremes in pH, proteases and cell wall degrading enzymes, freezing, desiccation and excessive heat or radiation [3,4]. This form of sporulation preserves the genome in a remarkably dispersible and dormant cell type that can resume vegetative growth when the environment improves.

While most sporulating species of Firmicutes produce a single endospore, some have the ability to produce multiple endospores [5]. For example, *Clostridium oceanicum* regularly forms two endospores, one at each end of the mother cell [6]. Others include the Segmented Filamentous Bacteria, a group of uncultivated inhabitants of the intestinal tract of animals [7]. These multicellular filaments live attached to the lining of the small intestine, and to disperse or reposition itself in the gut, each cell in a filament forms either an endospore containing two cells or two non-dormant intracellular offspring [7,8].

Other lineages within the Firmicutes use multiple endospore formation as a reproductive strategy. The guinea pig intestinal symbiont *Metabacterium polyspora* may undergo binary fission but the regular formation of multiple endospores, up to nine from a single mother

* Correspondence: era23@cornell.edu

¹Department of Microbiology, Cornell University, Ithaca, NY 14853, USA
Full list of author information is available at the end of the article

cell, is a significant form of reproduction [9,10]. The life history of *M. polyspora* may be selecting for this unusual mode of reproduction, which could improve survival as the bacteria cycle in and out of the host gastrointestinal tract [10]. A large and diverse group of surgeonfish intestinal symbionts related to *M. polyspora* display an array of reproductive modes that involve binary fission and/or sporulation [11]. Like *M. polyspora*, the identified morphotypes and phylotypes of these surgeonfish symbionts show host-specific distributions, and an individual fish acquires the symbionts by the ingestion of feces or detritus [11,12]. The type C *Epulopiscium*-like fish intestinal symbionts, rely solely on the formation of two endospores for reproduction and appear to have abandoned binary fission altogether [12]. The largest members of this group of symbionts, *Epulopiscium* spp. type A and type B, are phylogenetically distinct from the smaller endospore-forming C morphotypes. *Epulopiscium* spp. type A and B appear to have taken the developmental process one step further and reproduce by the daily production of two or more intracellular offspring that are not dormant [11,13]. The phylogenetic relationship between multiple endospore formers and lineages that produce non-dormant intracellular offspring, and the morphological changes shared between these processes, suggest that the latter developmental process is related to endospore formation [13].

The stages of endospore formation (Figure 1) are described in the model organism *Bacillus subtilis* [14,15] and these morphological transitions appear conserved in other endospore formers [16]. Cells that exhibit no overt signs of sporulation are defined as stage 0. After initiation of sporulation, the chromosome replicates and replication origins become tethered to opposite poles of the cell. This unusual nucleoid conformation is called the axial filament and these cells are said to be in stage I [17]. Instead of dividing at the midcell, the sporulating cell divides near one pole, producing the forespore and larger mother cell, which marks stage II. Division traps approximately one-third of one of the chromosomes in the forespore [18]. The rest of the chromosome, still within the mother cell, is translocated into the forespore so that the spore contains a complete genome [19]. Enzymatic degradation of peptidoglycan between the mother cell and forespore results in curvature of the septum [20,21]. The mother-cell membrane then wraps around the forespore to completely engulf the forespore, which marks stage III [22]. In stage IV, a modified peptidoglycan called the cortex is synthesized in the space between the mother-cell and forespore membranes. In stage V, a complex proteinaceous coat is applied to the developing spore [23,24]. Stage VI is defined as endospore maturation, when the spore gains many of its

resistance traits [3]. Lastly, the mother cell lyses to release the mature spore, in stage VII.

The sequential activation of stage-specific transcription factors controls the proper timing and location of gene expression to ensure the progression of cell-specific developmental events. In *B. subtilis*, a network of kinases and phosphatases conveys information about intracellular and extracellular conditions to the phosphorelay, which ultimately determines the phosphorylation state of the transcription factor Spo0A [25-27]. While Spo0A is considered the master regulator of sporulation, it also regulates a number of alternative cellular reactions to environmental change [28]. In its active form, Spo0A~P either directly or indirectly affects the transcription of more than 500 genes [29]. Spo0A activation is essential for entry into sporulation.

After asymmetric division, gene expression is regulated by four sporulation-specific sigma factors: σ^F , σ^E , σ^G , and σ^K (Figure 1) [30,31]. σ^F and σ^G are activated only in the forespore while σ^E and σ^K are activated only in the mother cell. Both σ^F and σ^E are expressed prior to asymmetric division [32], but σ^F is held inactive in a complex with two peptides of its anti-sigma factor SpoIIAB [33] and σ^E is synthesized as an inactive pro-peptide [34]. The forespore sigma, σ^F , is the first to be activated. SpoIIIE phosphorylates SpoIIAA (the σ^F anti-anti-sigma factor), which binds SpoIIAB leading to the release of σ^F [35-37]. SpoIIR, part of the σ^F regulon [38], is produced in the forespore and inserted into the sporulation septum, where it activates SpoIIGA in the mother cell [39]. SpoIIGA then cleaves pro- σ^E thus releasing mature σ^E to the cytoplasm [40]. Likewise, the late-sporulation sigma factors, σ^G and σ^K , are not immediately functional when expressed and activation of each entails factor-specific intracellular signaling cascades and release mechanisms [41-48].

Tighter control of particular genes in each regulon is provided by additional transcription factors [49-53] that form both coherent and incoherent feed-forward loops with their associated sigma factor [1]. Coherent feed-forward loops occur when a sigma factor regulates expression of a gene and then combines with that gene product to up-regulate more genes. Incoherent feed-forward loops come about when such a combination leads to the down-regulation of additional genes [1,53]. For example, *rsfA* and *spoIIR* are both expressed from σ^F promoters [38,49]. However, RsfA combined with σ^F turns off transcription of *spoIIR*, so only a brief burst of *spoIIR* expression is seen immediately following asymmetric division. Such feed-forward loops allow the cell to modulate the timing, duration and location of expression of subsets of genes within a regulon. The combination of all central transcriptional regulatory

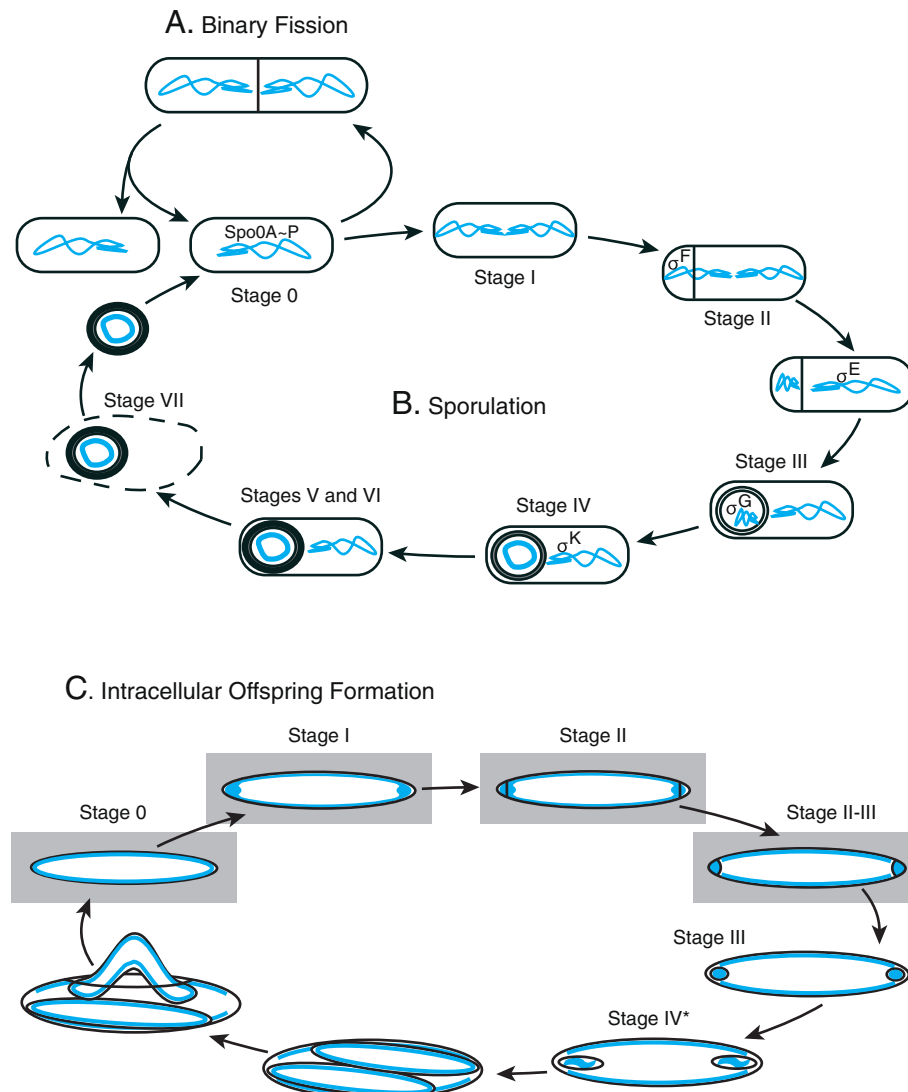


Figure 1 The life cycles of *B. subtilis* and *Epulopiscium* sp. type B. **A)** In a favorable environment, *B. subtilis* undergoes growth and division. **B)** When nutrient limitations become critical, the cell may develop an endospore. Shown here are the morphological stages described for sporulation. The temporal and spatial activation of Spo0A and the four sporulation-specific sigma factors are shown. The grey circle around the forespore indicates the cortex. The thick black circle around the forespore at stage V and beyond represents the spore coat. **C)** Earliest stages of offspring development in *Epulopiscium* sp. type B are based on the similar morphological transitions described for sporulation in *B. subtilis*. See text for a detailed explanation of the process. Offspring frequently initiate the next round of reproduction prior to exiting the mother cell. Those stages that are seen in offspring still within their mother cell are highlighted with grey boxes. For all diagrams, DNA is shown in blue.

mechanisms modulates the expression of more than 700 genes during sporulation.

The *B. subtilis* model can serve as a foundation for exploring mechanistic modifications required to support the formation of multiple endospores or intracellular offspring [13]. For example, *Epulopiscium* sp. type B are intestinal symbionts of the unicornfish *Naso tonganus* and can reach lengths of 200–300 μm and widths of 50–60 μm [11,54]. While the production of endospores has been observed in related morphotypes [12], *Epulopiscium* sp. type B does not produce endospores and does

not reproduce by binary fission (Figure 1). Instead, each cell forms two or more intracellular offspring in a process that repeats daily [54–56].

The formation of these offspring has been described in stages that parallel stages of endospore formation [54–56]. Stage 0 mother cells contain large offspring (daughter cells) that show no signs of the initiation of the next generation of offspring (i.e. granddaughter cells). Stage I is defined as offspring cells that have coalesced DNA at the poles. Stage II cells have straight polar septa, but not all polar DNA is inside the newly formed offspring.

Stage II-III includes cells with curved polar septa, indicating the start of polar cell engulfment, and all polar DNA has been translocated into the offspring. Stage III cells contain small, fully engulfed offspring, with a length-to-width ratio of less than 2:1 while the offspring in stage IV* cells have a ratio greater than 2:1. After engulfment, the two processes diverge and changes occurring in *Epulopiscium* are not well understood so later stages are not indicated in this model. Offspring continue to grow until they fill the mother-cell cytoplasm. In time, the mother-cell envelope splits open and the offspring are released.

Previous work has shown that the division protein FtsZ localizes to the poles of an *Epulopiscium* cell in a similar way to FtsZ in *B. subtilis* during endospore formation [54]. In *B. subtilis*, both potential division sites appear fully functional and a second, partial polar septum occasionally forms at the forespore-distal pole although the second septum eventually regresses [57,58]. With *Epulopiscium*, rapid sequential or simultaneous bipolar division occurs [54]. Putative homologs for SpoIIE, SpoIIAA, SpoIIAB and σ^F also have been identified in the *Epulopiscium* genome [55]. Moreover, the expression pattern of *spoIIE* in *Epulopiscium* during offspring formation [55] is very similar to that seen in sporulating *B. subtilis* [59]. These results suggest that *Epulopiscium* uses cell-specific activation of alternative sigma factors in offspring development.

Here we sequenced and examined the draft genome of *Epulopiscium* sp. type B to determine the extent of conservation of the sporulation genetic program. A list of conserved “core” sporulation genes was assembled and used to determine which of the core sporulation genes are conserved in the *Epulopiscium* genome and its spore-forming relative *Cellulosilyticum lentocellum* DSM 5427. As predicted, we found a number of homologs to genes with sporulation-specific functions in *Epulopiscium* and even more of the core genes conserved in *C. lentocellum*. These results begin to define the genetic mechanisms that may be used for offspring production and development in *Epulopiscium*.

Results and discussion

Epulopiscium sp. type B draft genome

The draft genome of *Epulopiscium* sp. type B was used to assess the conservation of sporulation gene homologs in this bacterium. *Epulopiscium* sp. type B has become our model for genome studies because *N. tonganus* harbors morphologically and genetically homogenous populations of these *Epulopiscium* cells. Clone libraries of 16S rRNA gene fragments generated from amplified DNA using primers (27F and 1492R) to conserved regions of the gene consistently yield a single phylotype [60,61]. Although the genome was not assembled completely, the

project produced approximately 2.7 Mbp of sequence in 92 large contigs ranging from 12 – 119 kb in length. The remaining data, consisting of small contigs less than 12 kb and well-represented single reads (singletons), comprise another 13.7 Mbp. This data set likely represents the *Epulopiscium* genome and may contain some highly repetitive DNA from the fish host or other abundant inhabitants of the *N. tonganus* intestinal tract that may have been carried along during *Epulopiscium* cell isolation.

To determine the completeness of the *Epulopiscium* draft genome, we analyzed the 92 large contigs using two approaches. First, we identified the total number of rRNAs and tRNAs encoded by the genome. We found four 5S, four 23S, and three 16S rRNA genes in addition to 31 tRNAs covering all amino acids except histidine, phenylalanine, and serine. These values are about one-third less the rRNAs and tRNAs encoded by *C. lentocellum* DSM 5427, the closest relative with a complete genome sequence [62]. We also analyzed the small contigs and singletons in the *Epulopiscium* draft genome and found additional functional RNAs. This resulted in a grand total of nine 5S, five 16S and five 23S rRNAs, as well as 66 tRNAs covering all amino acids for the *Epulopiscium* draft genome. These numbers should be viewed with caution as some copies may represent overlapping contigs that did not assemble. Second, we performed a clusters of orthologous genes (COG) analysis using the predicted proteome from the 92 large contigs of the *Epulopiscium* draft genome and compared the percent proteins encoded in each category against a similar analysis of all completely sequenced genomes in either the phylum Firmicutes or the genus *Clostridium* (Table 1). We found that the percentage of proteins in each COG category in the *Epulopiscium* draft genome was comparable to the percentages of either the Firmicutes or the Clostridia. One noteworthy difference was seen in the category of carbohydrate transport and metabolism, which was exceptionally high in *Epulopiscium*, compared to the other Firmicutes groups. Taken together, these data indicate that this draft is somewhat incomplete, although it is difficult to say with absolute certainty the level of completeness.

For the identification of potential sporulation gene homologs in *Epulopiscium*, contigs and singletons were concatenated into a single pseudomolecule. The position of each junction between adjacent fragments was noted so that any chimeric open reading frames formed during pseudomolecule assembly could be identified.

The core sporulation gene list

As a starting point, a comprehensive list of sporulation genes was compiled based on previous studies of *B. subtilis* 168 and its derivatives, since this is by far the most

Table 1 COG analysis of the *Epulopiscium* sp. type B genome

COG Category	Code	<i>Epulopiscium</i> sp. type B	<i>Clostridium</i>	Firmicutes
Information storage and processing				
Translation, ribosomal structure and biogenesis	J	7.57%	5.91%	6.95%
RNA processing and modification	A	0.00%	0.00%	0.00%
Transcription	K	5.35%	9.19%	8.05%
Replication, recombination and repair	L	4.17%	5.43%	6.20%
Chromatin structure and dynamics	B	0.00%	0.03%	0.03%
Cellular processes and signaling				
Cell cycle control, cell division, chromosome partitioning	D	1.94%	1.24%	1.29%
Nuclear structure	Y	0.00%	0.00%	0.00%
Defense mechanisms	V	1.60%	2.81%	2.39%
Signal transduction mechanisms	T	5.42%	6.92%	4.89%
Cell wall/membrane/envelope biogenesis	M	5.49%	5.60%	5.36%
Cell motility	N	4.31%	2.73%	1.51%
Cytoskeleton	Z	0.00%	0.01%	0.01%
Extracellular structures	W	0.00%	0.00%	0.00%
Intracellular trafficking, secretion, and vesicular transport	U	1.74%	1.44%	1.53%
Posttranslational modification, protein turnover, chaperones	O	3.13%	2.76%	2.99%
Metabolism				
Energy production and conversion	C	5.97%	5.94%	5.17%
Carbohydrate transport and metabolism	G	16.60%	7.26%	8.09%
Amino acid transport and metabolism	E	10.56%	8.42%	8.86%
Nucleotide transport and metabolism	F	2.78%	2.84%	3.33%
Coenzyme transport and metabolism	H	5.00%	4.13%	4.10%
Lipid transport and metabolism	I	2.22%	1.97%	2.36%
Inorganic ion transport and metabolism	P	5.28%	4.87%	5.22%
Secondary metabolites biosynthesis, transport and catabolism	Q	0.49%	1.03%	1.10%
Poorly characterized				
General function prediction only	R	11.46%	11.09%	11.20%
Function unknown	S	6.53%	8.36%	9.39%
Total Genomes Analyzed		1	32	300

thoroughly characterized sporulation program for any member of the Firmicutes. The initial list of 732 genes included those described using classic genetic approaches as well as putative sporulation genes uncovered in transcriptional array analyses of sporulation regulons [29,53,63-65]. BLAST searches refined the list, narrowing it to genes that are conserved in both endospore-forming Bacilli and Clostridia. Further refinement of the list eliminated genes with homologs in non-spore-forming Firmicutes.

Several notable genes that were eliminated are essential in the *B. subtilis* model of sporulation, including the phosphorelay protein Spo0B, and associated histidine kinases, transcription factors RsfA, GerR and GerE, and the intercellular signal transduction proteins SpoIIQ and SpoIVFA. Our inability to identify a SpoIIQ homolog

agrees with the results of a previous study [1]. Likewise, the limited distribution of *B. subtilis* phosphorelay homologs among endospore-forming bacteria has been noted previously [66,67] and it is likely that clostridia use a different set of kinases for activation of Spo0A [68,69]. For example, recent genetic studies demonstrated phosphorylation of Spo0A in *C. acetobutylicum* by novel orphan histidine kinases [68,69].

A few key early sporulation proteins (Spo0A, Spo0J, Soj, SpoIIIE and SpoIIJ), known to function during normal growth in *B. subtilis*, were placed back on the core list. All of these are part of the σ^A regulon and were first identified as essential for efficient sporulation. Spo0A determines entry into sporulation. Soj and Spo0J are members of the ParA/B family of partitioning proteins that regulate transcription of early sporulation genes and

assist in maintaining chromosome architecture [31]. The FtsK homolog SpoIIIE aids in chromosome separation during binary fission [70], and during sporulation it is responsible for chromosome translocation into the developing forespore [18,19]. The location of genes on the chromosome and timing of translocation affects cell-specific expression of genes, which impacts key molecular events such as the activation of sporulation sigma factors [71-73]. SpoIIJ is a membrane protein translocase that, in addition to its vegetative growth function, appears to play a key role in the activation of σ^G during sporulation [41,74]. In the end, our core list included 147 genes (Table 2).

An overview of the core sporulation genes found in *Epulopiscium* and *C. lentocellum*

We were concerned that the phylogenetic distance between *B. subtilis* and *Epulopiscium* may bias the distribution of conserved genes we would be able to identify. To gauge how much evolutionary divergence is impacting the recovery of homologs in *Epulopiscium*, we compared our core list of sporulation genes to the *C. lentocellum* genome as well. *Cellulosilyticum lentocellum* DSM 5427 is the closest endospore-forming relative of *Epulopiscium* with an available completely sequenced genome [62]. *Epulopiscium* sp. type B and *C. lentocellum* are members of the family Lachnospiraceae and the two share 91% 16S rRNA sequence identity. Of the 4,185 predicted protein-coding genes in the *C. lentocellum* genome, an *Epulopiscium* sp. type B gene is the top BLAST hit for 546 of these genes (data not shown).

Of the 147 core sporulation genes, we found 87 homologs in the *C. lentocellum* genome and 57 putative homologs in the *Epulopiscium* sp. type B genome (Table 3). All of the sporulation genes found in the *Epulopiscium* genome were also found in the *C. lentocellum* genome. In the list of conserved genes, two code for members of a family of functionally redundant small acid-soluble proteins (SASPs) that bind to and protect spore DNA from damage [4,75]. One of the SASPs is similar to two paralogs of this family from *B. subtilis* and is represented as *sspC/F*. In both *Epulopiscium* and *C. lentocellum*, at least five genes are represented from each of the four sporulation sigma factor regulons, as well as genes in the Spo0A regulon with σ^H and σ^A promoters. Of the *C. lentocellum* homologs not seen in the *Epulopiscium* genome, 14 code for “y” genes that are expressed during sporulation, although their roles have yet to be characterized. These genes are equally distributed between pre- and post-engulfment regulons, but only two are expressed in the forespore in *B. subtilis*.

Conservation of the master regulator Spo0A in *Epulopiscium*

Although clostridia do not have a phosphorelay system homologous to that used by *B. subtilis*, Spo0A is conserved in the genomes of all known endospore-forming bacteria. The *Epulopiscium* sp. type B genome contains an unambiguous Spo0A homolog (Figure 2). The *Epulopiscium* Spo0A homolog is 51% identical to Spo0A of *B. subtilis*. Conserved residues in both phospho-acceptor and DNA binding domains [76] are located in the putative *Epulopiscium* Spo0A homolog as well. This suggests that although offspring production seems hard-wired in *Epulopiscium* and there is no obvious need to adapt the timing of entry into offspring production to environmental conditions, Spo0A is still important for initiating this process or possibly other metabolic transitions. *Bacillus* spp. use the phosphorylation state and abundance of Spo0A to engage in activities, such as cannibalism, to maintain a growing population for as long as possible prior to resorting to sporulation [26]. In clostridia, Spo0A also dictates metabolic transitions [77]. For example, in *Clostridium acetobutylicum*, Spo0A activation shifts the cell from acid production during exponential phase growth to solvent production during stationary phase in addition to entry into sporulation [78]. We searched the *Epulopiscium* genome for homologs of the newly discovered *C. acetobutylicum* Spo0A kinases that are important for developmental and metabolic transitions [69], however none of these appear to be conserved in the *Epulopiscium* genome. The future identification and characterization of kinases or phosphatases in *Epulopiscium* that interact with Spo0A may provide information about the environmental and cellular cues that regulate population level developmental or physiological transitions.

The central regulatory network conserved in endospore-forming bacteria appears conserved in *Epulopiscium*

In *B. subtilis*, the sequential activation of cell-specific sigma factors directs compartmentalized gene expression that determines the different fates of the mother cell and forespore [1]. The presence of homologous genes suggests a similar system likely also functions in *Epulopiscium* developmental progression (Figure 3). In a previous publication, we described the σ^F homolog of *Epulopiscium* and a structural analysis of the proteins required for σ^F activation: SpoIIIE, SpoIIAA, and SpoIIAB [55]. In the present study, we uncovered genes coding for all additional sporulation sigma factors (σ^E , σ^G and σ^K) and homologs for the intercellular signal transduction proteins responsible for the activation of σ^E (SpoIIR and SpoIIGA) and σ^G (SpoIIIAA-AH and SpoIIJ). In *B. subtilis*, SpoIIQ interacts with SpoIIIAA-AH in an intracellular signaling system required for the

Table 2 Core sporulation genes identified in the *B. subtilis* 168 genome

GENE	REG	FUNCTION
<i>aprX</i>	K	alkaline serine protease
<i>bofA</i>	E	inhibitor of the pro- σ^K processing machinery
<i>cotI</i>	K	spore coat protein
<i>cotJB</i>	E	component of the inner spore coat
<i>cotJC</i>	E	component of the inner spore coat
<i>cotS</i>	K	spore coat protein
<i>csfB</i>	F	anti- σ^G factor
<i>cwlD</i>	E, G	N-acetylmuramoyl-L-alanine amidase/germination
<i>cwlJ</i>	E	cell wall hydrolase/germination, cortex lytic
<i>dacB</i>	E	D-alanyl-D-alanine carboxypeptidase (penicillin-binding protein 5)
<i>dacF</i>	F, G	D-alanyl-D-alanine carboxypeptidase (penicillin-binding protein)
<i>gerAA</i>	F, G	component of the germination receptor GerA
<i>gerAB</i>	F, G	component of the germination receptor GerA
<i>gerAC</i>	F, G	component of the germination receptor GerA
<i>gerBA</i>	G	component of germinant receptor B
<i>gerBB</i>	G	component of germinant receptor B
<i>gerBC</i>	G	lipoprotein component of the germination receptor B
<i>gerKA</i>	G	spore germination receptor subunit
<i>gerKB</i>	G	spore germination receptor subunit
<i>gerKC</i>	G	spore germination receptor subunit
<i>gpr</i>	F, G	germination protease
<i>jag</i>	A	SpolIII-associated RNA/ssDNA-binding protein
<i>kamA</i>	E	lysine 2,3-aminomutase
<i>kapD</i>	E, K	inhibitor of the KinA pathway to sporulation
<i>lonB</i>	F	ATP-dependent protease/forespore-specific
<i>mmgC</i>	E	short chain acyl-CoA dehydrogenase
<i>ntdA</i>	E	biosynthesis of neotrehalosadiamine (amino-sugar antibiotic)/aminotransferase
<i>pbpG</i>	F, G	penicillin-binding protein (also known as <i>ywhE</i>)
<i>pbpI</i>	E, F	penicillin-binding protein PBP4B/mother cell specific
<i>pdaA</i>	G	exported N-acetylmuramic acid deacetylase/cortex lysis
<i>prkA</i>	E	serine protein kinase/not well characterized
<i>sigE</i>	A, OA	sporulation sigma factor/mother cell only
<i>sigF</i>	H, OA	sporulation sigma factor/forespore only
<i>sigG</i>	F, G	sporulation sigma factor/forespore only
<i>sigK</i>	E, K	sporulation sigma factor/mother cell only
<i>sleB</i>	G	spore cortex-lytic enzyme
<i>soj</i>	A, OA	chromosome partitioning protein/transcriptional regulator/negative regulation of sporulation initiation
<i>spIB</i>	G	spore photoproduct (thymine dimer) lyase
<i>spmA</i>	E	spore maturation protein/spore dehydration

Table 2 Core sporulation genes identified in the *B. subtilis* 168 genome (Continued)

<i>spmB</i>	E	spore maturation protein/spore dehydration
<i>spo0A</i>	A, H, OA	two-component response regulator central for the initiation of sporulation/"master regulator"
<i>spo0F</i>	H, OA	two-component response regulator involved pathway leading to phosphorylation of Spo0A
<i>spo0J</i>	A	site-specific DNA-binding protein/chromosome positioning near the pole and transport through the polar septum/antagonist of Soj-dependent inhibition of sporulation initiation
<i>spolIIA</i>	H, OA	anti-anti-sigma factor (antagonist of SpolIAB)
<i>spolIAB</i>	H, OA	anti- σ^F factor
<i>spolID</i>	E	autolysin required for complete dissolution of the sporulation septum
<i>spolIE</i>	A, OA	serine phosphatase (σ^F activation)/polar septum formation
<i>spolIGA</i>	A, OA	protease processing pro- σ^F
<i>spolIIIA</i>	E	ATP-binding stage III sporulation protein/mother cell signalling for σ^G activation
<i>spolIIAB</i>	E	stage III sporulation protein/mother cell signalling for σ^G activation
<i>spolIIAC</i>	E	stage III sporulation protein/mother cell signalling for σ^G activation
<i>spolIIAD</i>	E	stage III sporulation protein/mother cell signalling for σ^G activation
<i>spolIIAE</i>	E	stage III sporulation protein/mother cell signalling for σ^G activation
<i>spolIIAF</i>	E	stage III sporulation protein/mother cell signalling for σ^G activation
<i>spolIIAG</i>	E	stage III sporulation engulfment assembly protein/mother cell signalling for σ^G activation
<i>spolIIAH</i>	E	stage III sporulation ratchet engulfment protein/mother cell signalling for σ^G activation
<i>spolIID</i>	E	transcriptional regulator of σ^E and σ^K -dependent genes
<i>spolIIE</i>	A	spore DNA translocase
<i>spolIJI</i>	A	protein translocase/essential for activation of σ^G
<i>spolIIM</i>	E	autolysin for dissolution of the septal cell wall
<i>spolIIP</i>	E, F, G	spore autolysin
<i>spolIIR</i>	F	endopeptidase/activation of σ^F
<i>spolIVA</i>	E	morphogenetic protein required for proper spore cortex formation and coat assembly
<i>spolIVB</i>	F, G, OA	regulatory membrane-associated serine protease/intercompartmental signalling of pro- σ^K processing and activation in the mother-cell
<i>spolIVFB</i>	E	membrane metalloprotease required for the processing of pro- σ^K
<i>spovAA</i>	G	dipicolinic acid uptake by the developing spore
<i>spovAB</i>	G	dipicolinic acid uptake by the developing spore
<i>spovAC</i>	G	dipicolinic acid uptake by the developing spore
<i>spovAD</i>	G	dipicolinic acid uptake by the developing spore
<i>spovAEB</i>	G	dipicolinic acid uptake by the developing spore

Table 2 Core sporulation genes identified in the *B. subtilis* 168 genome (Continued)

<i>spoVAF</i>	G	dipicolinic acid uptake by the developing spore
<i>spoVB</i>	E	spore cortex synthesis
<i>spoVD</i>	E	penicillin-binding protein
<i>spoVE</i>	E	spore cortex peptidoglycan synthesis
<i>spoVFA</i>	K	spore dipicolinate synthase subunit A
<i>spoVFB</i>	K	spore dipicolinate synthase subunit B
<i>spoVR</i>	E	spore cortex synthesis
<i>spoVS</i>	H	regulator required for dehydration of the spore core and assembly of the coat
<i>spoVT</i>	F, G	transcriptional regulator of σ^G -dependent genes
<i>spsF</i>	K	putative glycosyltransferase/spore coat polysaccharide synthesis
<i>spsG</i>	E, K	putative glycosyltransferase/spore coat polysaccharide synthesis
<i>spsJ</i>	E, K	putative dTDP-glucose 4,6-dehydratase/spore coat polysaccharide synthesis
<i>sspA</i>	G	small acid-soluble spore protein (alpha-type SASP)
<i>sspB</i>	G	small acid-soluble spore protein (beta-type SASP)
<i>sspC</i>	G	small acid-soluble spore protein (alpha/beta-type SASP)/SP β phage protein
<i>sspD</i>	G	small acid-soluble spore protein (alpha/beta-type SASP)
<i>sspF</i>	G	small acid-soluble spore protein (alpha/beta-type SASP)
<i>tlp</i>	F, G	small acid-soluble spore protein
<i>yaaH</i>	E	spore peptidoglycan hydrolase
<i>yabG</i>	K	sporulation-specific protease
<i>yabP</i>	E	spore protein involved in the shaping of the spore coat
<i>yabQ</i>	E	membrane protein of the forespore/essential for spore cortex
<i>ybaN</i>	E	polysaccharide deacetylase involved in sporulation
<i>ybdM</i>	G	putative protein kinase
<i>ycgF</i>	E	putative amino acid export permease
<i>ydfS</i>	K, G	hypothetical protein
<i>ydH</i>	E	spore cortex lytic enzyme
<i>yerB</i>	OA	putative lipoprotein
<i>yfkQ</i>	G	putative spore germination protein
<i>yfkR</i>	G	putative spore germination protein
<i>yfkT</i>	G	putative spore germination integral inner membrane protein
<i>yfnG</i>	K	putative sugar-phosphate cytidyltransferase
<i>yfnH</i>	K	putative FAD-dependent oxido-reductase
<i>ygaK</i>	K	putative FAD-dependent oxido-reductase
<i>yhbH</i>	E	hypothetical protein
<i>yhcB</i>	G	putative oxidoreductase associated
<i>yhcV</i>	G	putative oxidoreductase

Table 2 Core sporulation genes identified in the *B. subtilis* 168 genome (Continued)

<i>yhfW</i>	F	putative Rieske [2Fe-2S] oxygenase
<i>yisY</i>	E	putative hydrolase
<i>ykuD</i>	K	murein transglycosylase
<i>ykuS</i>	F	hypothetical protein
<i>ykvU</i>	E	spore membrane protein involved in germination
<i>ylaK</i>	E	putative phosphate starvation inducible protein
<i>ylbB</i>	F	putative oxidoreductase
<i>ylbJ</i>	E	putative factor required for spore cortex formation
<i>ymxH</i>	E	hypothetical protein
<i>yndD</i>	G	putative spore germination protein
<i>yndE</i>	G	putative spore germination integral inner membrane protein
<i>yndF</i>	G	putative spore germination lipoprotein
<i>yngE</i>	E	putative propionyl-CoA carboxylase
<i>yngI</i>	E	AMP-binding domain protein
<i>yngJ</i>	E	acyl-CoA dehydrogenase, short-chain specific
<i>yoaR</i>	G	putative factor for cell wall maintenance or synthesis
<i>yobN</i>	E	putative amine oxidase
<i>ypeB</i>	G	spore membrane component
<i>yqfC</i>	E	hypothetical protein
<i>yqfD</i>	E	stage IV sporulation protein
<i>yqgT</i>	E	putative gamma-D-glutamyl-L-diamino acid endopeptidase
<i>yqhO</i>	E	hypothetical protein
<i>yraD</i>	G	putative spore coat protein
<i>yrbG</i>	E, G	hypothetical protein
<i>yrkC</i>	K	putative dioxygenase; cupin family
<i>ytCA</i>	K	putative UDP-glucose dehydrogenase
<i>ytCC</i>	K	putative glucosyltransferase
<i>ytfJ</i>	F	hypothetical protein
<i>ytIA</i>	K	putative ABC transporter component
<i>ytIC</i>	K	putative ABC transporter component, ATP-binding
<i>ytID</i>	K	putative permease of ABC transporter
<i>ytlI</i>	E	putative permease
<i>ytXC</i>	E	hypothetical protein
<i>yunB</i>	E, K	putative protein involved in spore formation
<i>yutH</i>	F	spore coat-associated protein
<i>ywjD</i>	G	putative UV damage endonuclease
<i>yyaC</i>	F	hypothetical protein
<i>yyaE</i>	E	putative oxidoreductase
<i>yyaO</i>	K	hypothetical protein
<i>yyBI</i>	E	inner spore coat protein

Table 3 Genes conserved in *Epulopiscium* and *C. lentocellum*

GENE	PROMOTER(S)	<i>Epulopiscium</i>	<i>C. lentocellum</i>
σ^A regulon			
<i>jag</i>			X
<i>sigE</i>		X	X
<i>soj</i>		X	X
<i>spo0A</i>		X	X
<i>spo0J</i>		X	X
<i>spolIE</i>		X	X
<i>spolIGA</i>		X	X
<i>spolIE</i>	σ^A	X	X
<i>spolIJ</i>		X	X
σ^H regulon			
<i>sigF</i>		X	X
<i>spolIAA</i>		X	X
<i>spolIAB</i>		X	X
σ^F regulon			
<i>dacF</i>	σ^G	X	X
<i>gpr</i>	σ^G	X	X
<i>lonB</i>		X	X
<i>sigG</i>	σ^F, σ^G	X	X
<i>spolIR</i>		X	X
<i>spolVB</i>	σ^F, σ^G	X	X
<i>spoVT</i>	σ^G	X	X
<i>yhfW</i>			X
<i>ytfJ</i>			X
<i>yyaC</i>		X	X
σ^E regulon			
<i>bofA</i>			X
<i>cotJB</i>			X
<i>cotJC</i>			X
<i>cwlD</i>	σ^G	X	X
<i>dacB</i>		X	X
<i>kamA</i>			X
<i>prkA</i>		X	X
<i>sigK</i>		X	X
<i>spmA</i>		X	X
<i>spmB</i>		X	X
<i>spolID</i>	σ^E	X	X
<i>spolIIAA</i>	σ^E	X	X
<i>spolIIAB</i>	σ^E	X	X
<i>spolIIAC</i>	σ^E	X	X
<i>spolIIAD</i>	σ^E	X	X
<i>spolIIAE</i>	σ^E	X	X
<i>spolIIAF</i>	σ^E	X	X

Table 3 Genes conserved in *Epulopiscium* and *C. lentocellum* (Continued)

<i>spolIAG</i>	σ^E	X	X
<i>spolIIAH</i>	σ^E	X	X
<i>spolIID</i>	σ^E	X	X
<i>spolIP</i>	σ^G	X	X
<i>spolVA</i>	σ^E	X	X
<i>spoVB</i>		X	X
<i>spoVD</i>		X	X
<i>spoVE</i>		X	X
<i>spoVR</i>		X	X
<i>spsJ</i>			X
<i>yaaH</i>			X
<i>yabP</i>	σ^E	X	X
<i>yabQ</i>	σ^E	X	X
<i>yhbH</i>		X	X
<i>yIbJ</i>			X
<i>yngI</i>			X
<i>yqfC</i>	σ^E	X	X
<i>yqfD</i>	σ^E	X	X
<i>yqgT</i>			X
<i>yqhO</i>			X
<i>ytlI</i>		X	X
σ^G regulon			
<i>gerKA</i>			X
<i>gerKB</i>			X
<i>gerKC</i>			X
<i>pdaA</i>		X	X
<i>spIB</i>			X
<i>spoVAA</i>			X
<i>spoVAB</i>			X
<i>spoVAC</i>			X
<i>spoVAD</i>			X
<i>spoVAEB</i>			X
<i>spoVAF</i>		X	X
<i>sspB</i>		X	X
<i>sspC/F</i>		X	X
<i>ybdM</i>		X	X
<i>ydfS</i>			X
σ^K regulon			
<i>cotS</i>		X	X
<i>spoVFA</i>			X
<i>spoVFB</i>	σ^K	X	X
<i>yabG</i>		X	X
<i>yfnG</i>		X	X
<i>yfnH</i>		X	X

Table 3 Genes conserved in *Epulopiscium* and *C. lentocellum* (Continued)

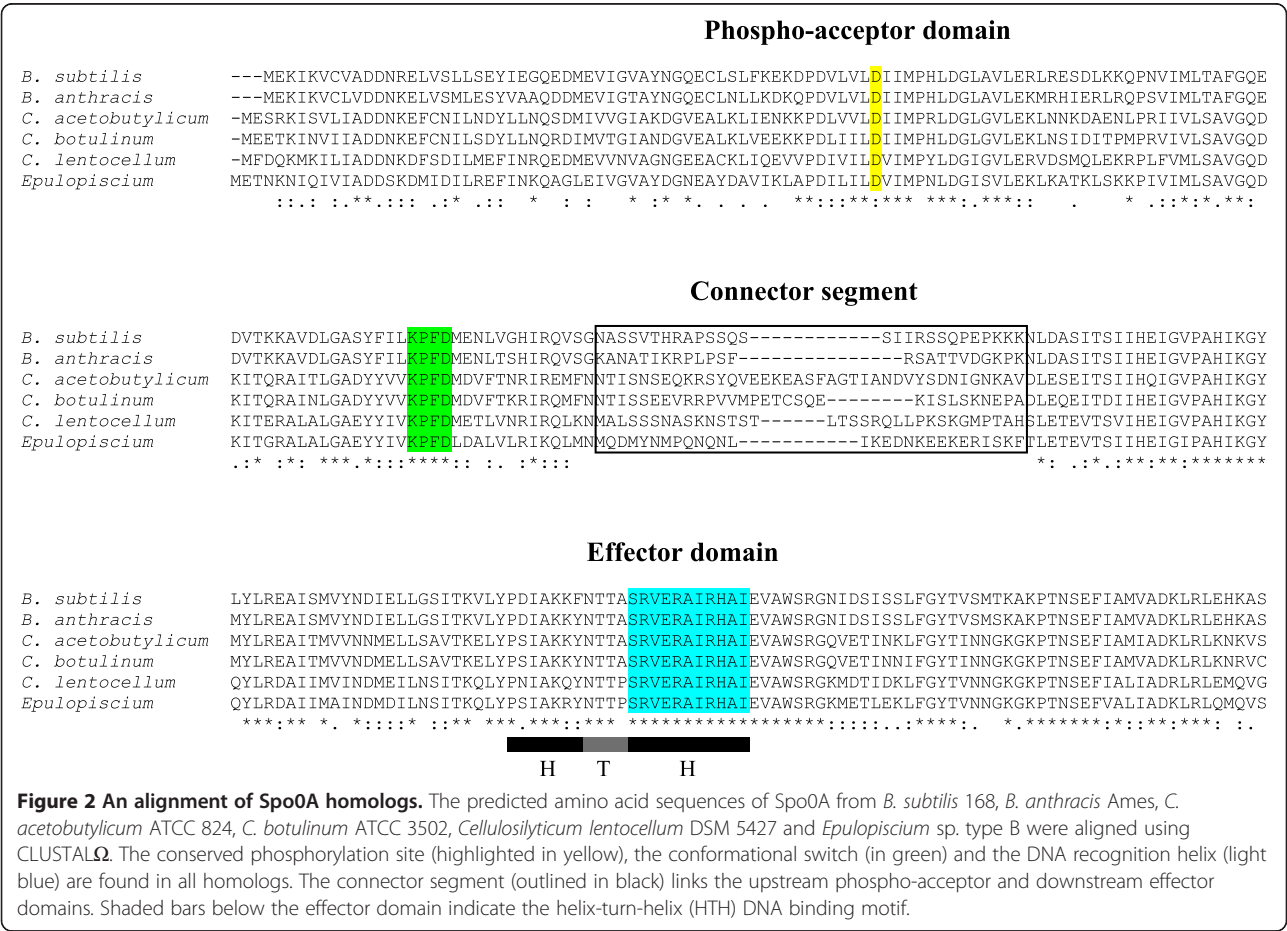
<i>ygaK</i>	X
<i>yrcC</i>	X
<i>ytC</i>	X
<i>ytIA</i>	X
<i>ytIC</i>	X
<i>ytID</i>	X

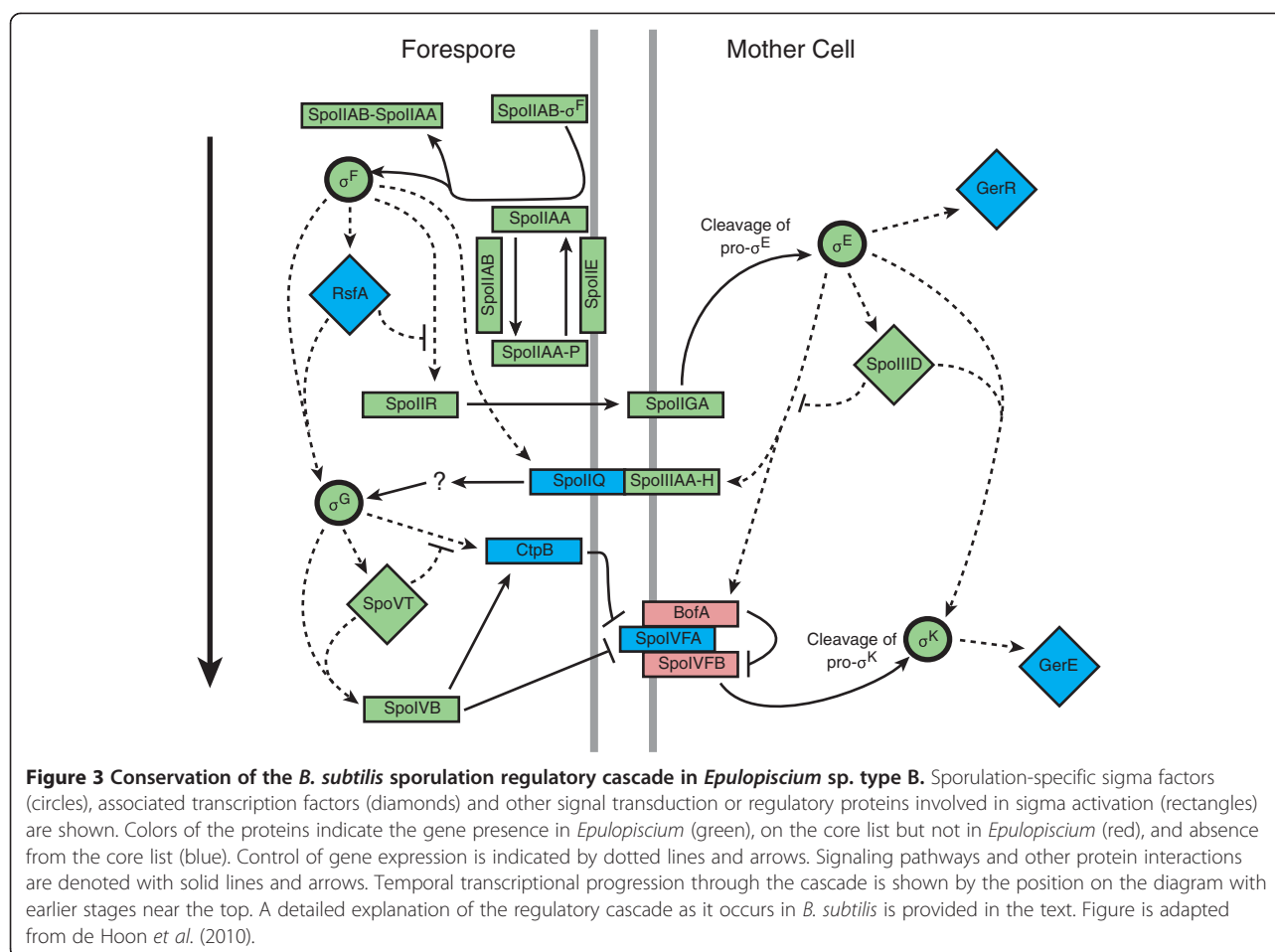
activation of σ^G [45]. The gene coding for SpoIIQ is absent in clostridia [1] therefore involvement of SpoIIQ is a *Bacillus*-specific innovation that likely does not represent the ancestral mode of cell-cell communication used to trigger late forespore sigma factor activation.

Mechanisms to activate the late mother-cell sigma factor, σ^K , are apparently the most specialized of the sporulation sigma factors. In *B. subtilis*, the gene encoding σ^K contains a 48 kb insertion sequence called the *skin* (sigma K intervening) element that must first be excised from the mother-cell chromosome by the

recombinase SpoIVCA [79,80]. The reconstituted gene produces an inactive pro-protein which must be processed by SpoIVFB but BofA and SpoIVFA inhibit SpoIVFB activity [47,48]. These three proteins are transcribed by σ^E in the mother cell and localize to the outer forespore membrane. SpoIVB and CtpB, regulated by σ^G in the forespore, inhibit the actions of BofA and SpoIVFA allowing cleavage of pro- σ^K [44,81]. In this way, σ^K operates in the mother cell only after σ^G has been activated in the forespore. Only homologs for *spoIVB* and *ctpB* were found in *Epulopiscium*. Note that *ctpB* homologs are found in many non-spore-forming bacteria, which is why it is not included in the core list. The gene coding for SpoIVFA is absent in clostridia and although *spoIVFB* and *bofA* met the requirements to be included on the core list, neither is conserved in many clostridia and only *bofA* was found in the *C. lentocellum* genome. The weak conservation of these proteins outside of the Bacilli indicates that the intricate mechanism of σ^K activation described in *B. subtilis* is a recent innovation.

In addition to conservation of sporulation sigma factors and many of the proteins responsible for regulating





their activation, we found homologs of transcription factors SpoIID and SpoVT. These proteins work together with their associated sigma factor (σ^E and σ^G , respectively) to modulate transcription of genes downstream in the process. Other transcription factors that function during sporulation in *B. subtilis* (RsfA, GerR and GerE) are not conserved in the clostridia. These feed-forward loops appear to be a Bacilli-specific amendment. Based on these results, we conclude that gene regulation by sporulation-specific sigma factors and their associated transcription factors is highly conserved in *Epulopiscium*. With the exception of *bofA*, all of the core sporulation genes coding for components of the central regulatory cascade that are conserved in the *C. lentocellum* genome are also conserved in *Epulopiscium*.

Engulfment genes are highly conserved in *Epulopiscium*

SpoIID, SpoIIP and SpoIIM are required for degradation of septal peptidoglycan and progression toward forespore engulfment in *B. subtilis* [21]. We found *Epulopiscium* genes that code for homologs of SpoIID and SpoIIP but could not identify a SpoIIM homolog. SpoIIM appears highly conserved in spore-forming bacteria but is

curiously absent from the Lachnospiraceae, as the genome of *C. lentocellum* also lacks an apparent homolog of *spoIIM* (Table 3). The *Epulopiscium* *spoIIP* initially retrieved from the pseudomolecule did not meet the requirements to be considered a homolog in this analysis, as it appeared to be missing its 5' end. In *B. subtilis*, *spoIIP* has its own σ^E promoter [82] but is also the second gene in an operon with *gpr* [63], and this operon structure is widely conserved in *Bacillus* and *Clostridium* spp. A truncated *gpr* homolog was identified in the *Epulopiscium* draft genome. Based on this information, PCR and sequence analysis was used to recover the complete *Epulopiscium* *gpr* - *spoIIP* operon.

Other proteins that function during engulfment in *B. subtilis* are SpoIIB, SpoIIIE, SpoIIIAH and SpoIIQ. SpoIIB likely plays a role in the localization of the SpoIIDMP complex in *B. subtilis* [20] but it is not conserved in the clostridia. Null mutants of *spoIIB* in *B. subtilis* are oligosporogenous, and this sporulation defect becomes more pronounced when combined with a *spoVG* mutation [83]. In addition to its DNA translocase activity, SpoIIIE has been implicated in the fusion of the leading edge of the mother-cell membrane after

migrating around the forespore [84,85]. We identified homologs of SpoIIIE in both *Epulopiscium* and *C. lentocellum*. Beyond the role of the SpoIIAH - SpoIIQ complex in σ^G activation, these two proteins may perform an important role during engulfment. It has been suggested that as the mother-cell membrane migrates around the forespore, these proteins bind to one another near the leading edge of the mother-cell membrane to prevent it from retreating back toward the midcell [22]. Homologs of the *spoIIA* operon were identified in *C. lentocellum* and *Epulopiscium*. With the exception of SpoIIM and SpoIIQ, all of the known proteins required for engulfment in *B. subtilis* are coded for in the *Epulopiscium* genome (Figure 4). Neither SpoIIM nor SpoIIQ are coded for in the *C. lentocellum* genome.

Late stage sporulation proteins in the *Epulopiscium* genome

A small number of late sporulation genes were identified in the *Epulopiscium* sp. type B genome. This may be an underestimate as many of the proteins in this category are very small and functionally redundant. For example, it is possible that some coat proteins have diverged to a degree that they could not be detected by our methods. Regardless, *B. subtilis* uses more than 75 proteins for cortex and coat formation, spore maturation and germination of which *Epulopiscium* has retained 17 possible homologs. In comparison, the *C. lentocellum* genome has 31. The genes retained in *Epulopiscium* may perform novel functions, or are relics of its spore-forming ancestry. Previous studies have identified sporulation homologs in the genomes of non-sporulating members of the Firmicutes [2]. Additionally, many surgeonfish intestinal symbionts that are close relatives of *Epulopiscium* sp. type B form endospores [12], and would likely need late sporulation proteins similar to those in *B. subtilis* and

the clostridia for the formation of cortex and coat as well as spore maturation and germination.

Based on their functions in *B. subtilis*, we classified the late sporulation genes located in *C. lentocellum* and/or *Epulopiscium*. With the notable exception of genes coding for SASPs (*sspB*, *sspC/F*) or SASP degradation (*gpr*), genes involved in resistance properties of a mature spore and germination signal receptors (*gerK* operon) are more highly conserved in *C. lentocellum*. Specifically, *C. lentocellum* has the nine genes required for the synthesis and forespore-uptake of dipicolinic acid (DPA) while *Epulopiscium* has only one of these genes. Likewise, only *C. lentocellum* has *splB*, which codes for the DNA repair enzyme spore-photoproduct lyase. Surprisingly, all of the ten genes on the list involved in cortex biosynthesis or other cortex-associated properties that are conserved in *C. lentocellum* are also found in *Epulopiscium*. In addition, *spoIVA*, *yabP* and *yabQ*, which encode scaffolding proteins important for cortex and coat morphogenesis [86-88], were found in both *C. lentocellum* and *Epulopiscium*. We speculate that the synthesis of a cortex-like peptidoglycan may accommodate several *Epulopiscium* characteristics including rapid offspring growth, emergence of offspring from the mother cell or other functions that support a large bacterial cell. Four coat protein genes were found in *C. lentocellum* but only one of these appears conserved in *Epulopiscium*. The biased distribution of functional categories represented in *Epulopiscium* suggests that cortex biosynthetic machinery has been retained, as well as the DNA-protective SASPs, and these proteins may still serve some function. Overall, the pattern of conserved genes in *C. lentocellum* compared with *Epulopiscium* (Figure 5) supports our hypothesis that there is a strong selection to retain early stage sporulation gene homologs in *Epulopiscium* such as those necessary for compartmentalized gene expression, engulfment and developmental progression.

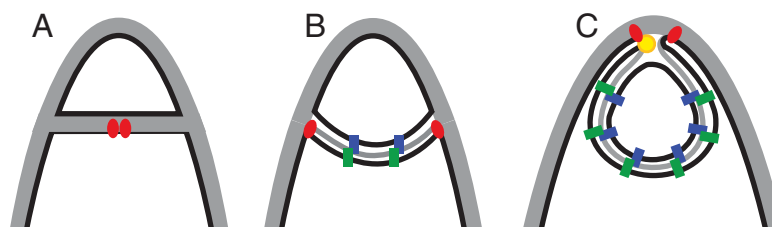
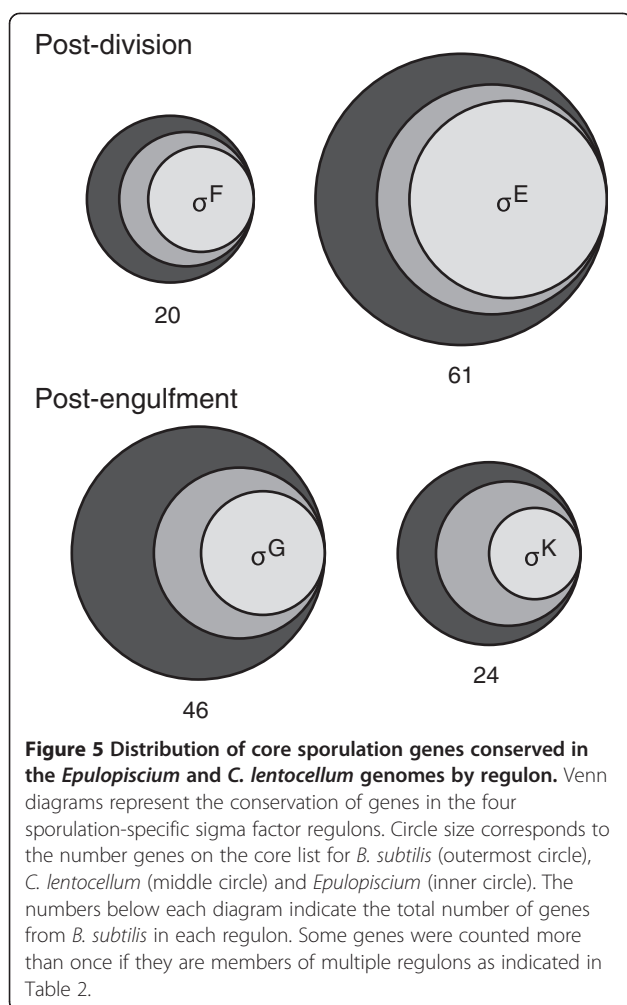


Figure 4 *Epulopiscium* engulfment model. The *Epulopiscium* genome codes for all of the genes known to be essential for engulfment in *B. subtilis*, except *spoIIM* and *spoIIQ* which are also absent in *C. lentocellum*. **A)** SpoIID and SpoIIP assemble into a complex (red ovals) at the division septum and degrade the septal peptidoglycan. **B)** As the mother-cell membrane wraps around the offspring, the IIDP complex tracks along the leading edge where it is involved in interactions with the mother-cell peptidoglycan and synthesis of offspring cell wall. **C)** When it reaches the cell tip, membrane fusion is mediated by SpoIIIE (yellow circle). During engulfment, SpoIIAH (green rectangles) produced in the mother cell and a hypothetical protein (blue rectangles) from the offspring cell bind and prevent backward movement of the mother-cell membrane. In this diagram, black lines indicate membranes and grey peptidoglycan.



Promoter analysis of putative developmentally regulated genes

For each of the sporulation genes found in the *Epulopiscium* genome, the region immediately upstream of the predicted start codon (~300 bp) was visually scanned for potential promoter sequences (Table 4). While this analysis is not definitive, we reasoned that identifiable promoters that match their predicted *B. subtilis* counterparts would reinforce the predictions placing genes in particular regulons. Consensus of the -10 and -35 promoter sequences from *B. subtilis* promoters were used [53,63,89]. We were able to identify σ^F promoters upstream of *sigG* and *spoIVB*, and σ^E promoters upstream of *spoIID*, the *spoIIIA* operon, *spoIIID*, the *yabPQ* operon and the *yqfCD* operon. σ^G promoters were found upstream of *dacF*, *cwlD*, *sigG*, *spoIVB*, *spoVT* and the *gpr* - *spoIIP* operon. Only one gene, *spoVFB*, was found to have a σ^K promoter. Our analysis of the putative *dacF* homolog indicated that approximately 50% of the 5' end of the gene was present in the pseudomolecule, however, we were unable to obtain a full-length gene by PCR. The

gene *spoVFB* codes for the β -subunit of DPA synthase and is usually located in a bicistronic operon downstream of *spoVFA*, the gene for the α -subunit of the DPA synthase [90]. DPA is found in abundance only in mature endospores [91] and is a distinct feature of the phase-bright spores of the *Epulopiscium*-like symbionts of *Naso lituratus* [12]. Although we were unable to recover *spoVFA* from *Epulopiscium*, we did find homologs of *spoVFA* and *spoVFB* adjacent to each other in the *C. lentocellum* genome.

Conclusions

The comparative analysis of the draft *Epulopiscium* sp. type B genome with the complete *C. lentocellum* genome substantiates our hypothesis that the production of intracellular offspring in *Epulopiscium* evolved from endospore formation. All of the genes identified in *C. lentocellum* that function in engulfment as well as the core transcriptional regulatory cascade, and the associated intracellular communication network that coordinates sigma factor activation, were found in the *Epulopiscium* genome. While we could identify homologs of late sporulation genes, a large proportion of these were not recovered from *Epulopiscium*. Since we used a draft genome to explore the conservation of sporulation genes in *Epulopiscium*, it is possible that we did not recover all of the sporulation genes retained in this genome, however, we would not expect a functional bias in the distribution of genes recovered. Therefore the fewer late genes recovered in *Epulopiscium* probably reflect the reduction of this class of genes in the evolution of its genome.

Although *Epulopiscium* sp. type B is closely related to surgeonfish intestinal symbionts that form multiple endospores to reproduce [12], it appears that type B cells may no longer have the genetic capacity to form a dormant and fully resistant endospore. Many intestinal anaerobes, from harmful pathogens to benign commensals, use endospores for effective dispersal between vertebrate hosts [8,10,92]. The ability of an intestinal bacterium to produce an endospore should be valuable to survival. Why then would *Epulopiscium* sp. type B lose this trait? We speculate that the perpetuation of large cell size and the ability to maintain a longer residence in an individual host may be factors that contributed to the loss of dormancy and associated resistance traits in offspring development in this lineage. The large size of *Epulopiscium* sp. type B cells may be important to maintain their position in the gut and to avoid predation by the ciliate predators that cohabitate the *N. tonganus* intestinal tract [61]. The growth and development of offspring within a metabolically active mother cell may be essential for maintaining these benefits throughout the life cycle of an individual. It is also possible that the

Table 4 Promoters found upstream of sporulation gene homologs in the *Epulopiscium* genome

GENE/OPERON	PROMOTER							
	σ^F		σ^E		σ^G		σ^K	
	-35	-10	-35	-10	-35	-10	-35	-10
<i>sigG</i>	GTATA	GGGTATCCTA			GTATA	TATCCTA		
<i>spoIVB</i>	GTATA	GGCAATTTTA			GTATA	AATTTTA		
<i>spoIID</i>			TTATAAGT	TCATATAATT				
<i>spoIIIA</i>			TAATGATT	GCATATACTG				
<i>spoIIID</i>			TAATATAT	GCATATTATT				
<i>spoIVA</i>			TCATATCC	ACATATAGTT				
<i>yabPQ</i>			GAATAATT	AAATATAAAT				
<i>yqfCD</i>			GAATACTT	GCATAATATG				
<i>dacF</i>					GTATA	AATAATA		
<i>cwlD</i>					GAATT	GATAATA		
<i>gpr-spoIIP</i>					GATTA	TATATTA		
<i>spoVT</i>					GCATA	CATAATA		
<i>spoVFB</i>							TCACA	TCATATTATA
<i>B. subtilis</i> consensus ^a	GTATA	GGNAANAMTR	TYATATTT	KCATANANTN	GNATA	CAWAMTA	KCACM	GCATANNNNTA

^a Consensus sequences from *B. subtilis* were based on Wang et al. (2006) and Eichenberger et al. (2004). Bold indicates a highly conserved base. N = A, T, G, C; R = A, G; Y = C, T; K = T, G; M = A, C; W = A, T.

manifestation of some resistance traits may simply be impossible for a cell as large as an *Epulopiscium* sp. type B offspring. For example, the formation of a flawless spore coat may be physically impossible for this size of cell.

In the study outlined here, we generated the first genome sequence for any *Epulopiscium* species and use it to provide insight into the evolution of a novel form of cellular reproduction in the *Epulopiscium* lineage. Based on its phylogenetic position among endospore-forming lineages, we reason that formation of active intracellular offspring in *Epulopiscium* sp. type B is a recent modification of the sporulation program. Given the number of sporulation gene homologs found in the *Epulopiscium* genome, we consider it highly unlikely that the developmental program was assembled through multiple horizontal transfer events. Our comparative study reveals that genes essential for physical (e.g. engulfment of the offspring cell) and regulatory mechanisms (e.g. alternative sigma factors and intracellular communication) have been maintained in a live-offspring-bearing cell. We also found that genes involved in the synthesis of a modified form of peptidoglycan have been conserved. These may be important for offspring growth and intracellular development. Clearly further functional studies are required to test the above models and identify additional mechanisms acquired or modified during evolution of offspring formation in *Epulopiscium*. The findings presented here will provide a framework to begin to assess genetic programs expressed during development in *Epulopiscium*.

Methods

Epulopiscium sample collection and DNA extraction

Naso tonganus were collected by spear on outer reefs in the vicinity of Lizard Island, Great Barrier Reef, Australia. Sections of the gut were removed and the contents were fixed in 80% ethanol. Samples were stored at -20 °C upon arrival at the laboratory.

Epulopiscium cells were manually selected from fixed intestinal contents, using a standard Gilson pipettor and a Nikon SMZ-U dissecting microscope. Cell lysis and DNA extraction were performed as previously described [61]. Briefly, *Epulopiscium* type B cells were incubated with 100 µg/ml Proteinase K for one hour at 50 °C. DNA was extracted with phenol:chloroform and precipitated. After rinsing with 70% ethanol, the DNA was resuspended in TE (10 mM Tris, 1 mM EDTA, pH 8) buffer.

Genome sequencing and analysis

A draft genome sequence was generated using a random shotgun approach and paired-end Sanger sequencing. Sequence reads, providing approximately 8-fold coverage of the estimated 4 Mbp genome were assembled using a combination of the Celera Assembler [93] and TIGR Assembler [94]. To improve assembly, reads were first sorted based on G + C content and only reads that had 23 – 53% G + C were retained. The resulting reads were assembled again and open reading frames (ORFs) predicted using GLIMMER [95]. A BLAST [96] analysis of predicted ORFs against the National Center for Biotechnological Information (NCBI) non-redundant protein (nr)

database was used to remove non-bacterial sequences. This strategy yielded 92 large contigs 12 kb to 119 kb in length. These contigs are deposited in GenBank under the accession number NZ_ABEQ01000000.

Draft genome assessment of the 92 large contigs was performed using two approaches. First, the total number of rRNA and tRNA genes were predicted using RNAmmer [97] and tRNAscan-SE [98], respectively. This analysis was also performed on the small contigs and singletons in the *Epulopiscium* draft genome. Second, a clusters of orthologous genes (COG) analysis [99] was performed using the *Epulopiscium* predicted proteome. Each protein was compared against a local COG database obtained from NCBI (<ftp://ftp.ncbi.nih.gov/pub/mmdb/cdd/>, accessed: 06/23/2011) using RPSBLAST [100] and the total number of proteins in each COG category was tabulated and represented as a percent of the number of COG-annotated proteins in the genome. This analysis was also performed for all sequenced genomes belonging to the phylum Firmicutes and genus *Clostridium* using the complete sequenced microbial genome collection from the NCBI (<http://www.ncbi.nlm.nih.gov/genomes/lproks.cgi>, accessed: 06/23/2011).

Generation of a core sporulation gene list

An initial list of sporulation genes was created based on four studies describing the regulons of the four sporulation-specific sigma factors and the transcription factor Spo0A from *B. subtilis* [29,53,63,64]. Other genes reported in the GenoList Comparative Microbial Genome Browser [65] with putative sporulation functions in *B. subtilis* 168 were added to this list. Any gene coding for a protein with a known vegetative growth function was removed. This list was refined further by BLASTP (<http://blast.ncbi.nlm.nih.gov/Blast.cgi>) searches to determine the distribution of similar proteins in the NCBI nr database. Multiple searches were performed and limited to the phylum Firmicutes, class Clostridia, and if necessary *Clostridium* spp. and *Bacillus* spp. Proteins represented in 15 strains of endospore-forming bacteria in both class Bacilli and class Clostridia with greater than or equal to 70% query coverage and 20% identity were retained on the list. Proteins with top hits for putative homologs in two or more species within the non-spore-forming genera *Listeria*, *Streptococcus*, *Lactobacillus*, *Staphylococcus*, *Enterococcus*, and *Peptostreptococcus*, indicating a vegetative function, were removed. Several key proteins that were first identified as essential to sporulation (Spo0A, Spo0J, Soj, SpoIIIE and SpoIIIB) were added back to the list.

Search for core proteins coded for in the *Epulopiscium* and *C. lentocellum* genomes

All contigs and well-represented single reads from the *Epulopiscium* sp. type B draft genome were concatenated

to form a pseudomolecule. Coordinates for all junctions between contigs and single reads were entered into an Excel file for easy reference. The pseudomolecule and the complete *C. lentocellum* DSM 5427 genome [62] were searched for homologs of core proteins using TBLASTN and BLASTP, respectively. For each query, the top hits in the *Epulopiscium* or *C. lentocellum* genome were compared to *Bacillus* and *Clostridium* sequences in the NCBI nr database using BLASTP. If reverse-BLAST searches recovered a top hit that was different from the *B. subtilis* core protein used in the initial BLAST analysis, the protein was eliminated from the list. By this method, additional putative homologs with weak hits (below the original cutoff values) were identified. Operon structure was an additional criterion used to identify homologs. Core sporulation protein homologs identified in *C. lentocellum* were then used to search the *Epulopiscium* genome using TBLASTN. Multiple sequence alignments were performed using ClustalΩ [101].

Confirmation of *dacF*, *gpr-spolIP*, *spoVT*, *sspC/F*, *ybdM* and *yycA*

Primers were developed to amplify sporulation genes identified in the *Epulopiscium* genome that were located in small contigs or singletons or to link genes in operons predicted from synteny in the genomes of other spore formers (Table 5). PCR was performed using standard reaction conditions, and products were cloned into the pCR 2.1 TOPO vector (Invitrogen) following the protocol provided by the manufacturer. Sequences of the

Table 5 Primers used in this study

DESIGNATION	SEQUENCE (5' TO 3')
GprendF	ATAGACGCATTAGGAGCACG
SpolIPbegR	GCTTAGCGGACTTTGTATCACC
EpuloGprF	GAGAACATTGGTATTACAGGCG
EpuloGprR	GCTTGCATATATCACCTCCTTG
EpuloSpolIPF	CATTGCTGTTACCCAGGTA
EpuloSpolIP859R	GCAGTAACCTTAGACGCA
EpuloSpolIP684F	CAAAGTATGGGCTAAATGTATTGC
EpuloSpolIPR	CAAAACAACAGACATCACCG
EpuloDacFF	GAGCCCCGATTGTAACATT
EpuloDacFR1	GGTTAATCCAAATTCACCTTCGCC
EpuloSpoVTF	TTTAGTATTATCAAGAGAAAAACAGCAT
EpuloSpoVTR	TGAACATTTGTCAAGATATAAATGCAA
EpuloSspC/FF	CTCCAAAATAATTTAGGAATATTGTCC
EpuloSspC/FR	TACACAGAAGTACCCCTTTGC
EpuloYbdMF	GAGTGTTCTTTTAGTGGCTCTG
EpuloYbdMR	AACATGACCTCACACTGGCA
EpuloYyaCF	GCGGTGTTGTTGTAAGTGC
EpuloYyaCR	TACACCGAAGAATTAAGCA

clones were determined using Big Dye Terminator chemistry and an Applied Biosystems Automated 3730 DNA analyzer, performed at the Cornell Life Sciences Core Laboratories Center and analyzed with Geneious Pro 5.4.2 (Biomatters). The sequences for the *gpr-spolIP* operon [accession number JN402987], *dacF* [JN402985], *spoVT* [JN402986], *sspC/F* [JN402984], *ybdM* [JN402982], and *yycC* [JN402983] are available from GenBank.

Competing interests

The author(s) declare that they have no competing interests.

Acknowledgements

We thank the staff and directors of the Lizard Island Research Station and Howard Choat for advice and assistance in the field. We also thank Ian Hewson for advice with batch BLAST analyses and John Helmann for help with promoter identification and analysis, and three anonymous reviewers for their comments and suggestions. This research was funded by the National Science Foundation grant 0721583. Collections were carried out under GBRMPA Permit number G03/3871.1 and James Cook University Ethics Approval No. A503.

Author details

¹Department of Microbiology, Cornell University, Ithaca, NY 14853, USA.

²Department of Bacteriology, University of Wisconsin-Madison, Madison, WI 53706, USA. ³School of Biological Sciences, University of Auckland, Auckland 1142, New Zealand.

Authors' contributions

ERA and DAM designed the study and wrote the initial manuscript draft. KDC and ERA collected samples. DAM and GS designed and performed the computational analyses. DAM and ERA interpreted results. All authors contributed to writing the manuscript and approved the final draft.

Received: 3 December 2011 Accepted: 21 June 2012

Published: 21 June 2012

References

- de Hoon MJ, Eichenberger P, Vitkup D: Hierarchical evolution of the bacterial sporulation network. *Curr Biol* 2010, **20**(17):R735–R745.
- Onyenwoke RU, Brill JA, Farahi K, Wiegell J: Sporulation genes in members of the low G + C Gram-type-positive phylogenetic branch (Firmicutes). *Arch Microbiol* 2004, **182**(2–3):182–192.
- Nicholson WL, Munakata N, Horneck G, Melosh HJ, Setlow P: Resistance of *Bacillus* endospores to extreme terrestrial and extraterrestrial environments. *Microbiol Mol Biol Rev* 2000, **64**(3):548–572.
- Setlow P: I will survive: DNA protection in bacterial spores. *Trends Microbiol* 2007, **15**(4):172–180.
- Angert ER: Alternatives to binary fission in bacteria. *Nat Rev Microbiol* 2005, **3**(3):214–224.
- Smith LD: *Clostridium oceanicum*, sp. n., a sporeforming anaerobe isolated from marine sediments. *J Bacteriol* 1970, **103**(3):811–813.
- Klaassen HL, Koopman JP, Van den Brink ME, Bakker MH, Poelma FG, Beynen AC: Intestinal, segmented, filamentous bacteria in a wide range of vertebrate species. *Lab Anim* 1993, **27**(2):141–150.
- Chase DG, Erlandsen SL: Evidence for a complex life cycle and endospore formation in the attached, filamentous, segmented bacterium from murine ileum. *J Bacteriol* 1976, **127**(1):572–583.
- Robinow CF: Observations on the structure of *Bacillus* spores. *J Gen Microbiol* 1951, **5**(3):439–457.
- Angert ER, Losick RM: Propagation by sporulation in the guinea pig symbiont *Metabacterium polyspora*. *Proc Natl Acad Sci U S A* 1998, **95**(17):10218–10223.
- Clements KD, Sutton DC, Choat JH: Occurrence and characteristics of unusual protistan symbionts from surgeonfishes (Acanthuridae) of the Great Barrier Reef, Australia. *Marine Biol* 1989, **102**:403–412.
- Flint JF, Drzymalski D, Montgomery WL, Southam G, Angert ER: Nocturnal production of endospores in natural populations of *Epulopiscium*-like surgeonfish symbionts. *J Bacteriol* 2005, **187**(21):7460–7470.
- Angert ER, Brooks AE, Pace NR: Phylogenetic analysis of *Metabacterium polyspora*: clues to the evolutionary origin of daughter cell production in *Epulopiscium* species, the largest bacteria. *J Bacteriol* 1996, **178**(5):1451–1456.
- Ryter A: Etude morphologique de la sporulation de *Bacillus subtilis*. *Ann Inst Pasteur* 1965, **108**:40–60.
- Kay D, Warren SC: Sporulation in *Bacillus subtilis*. Morphological changes. *Biochem J* 1968, **109**(5):819–824.
- Fitz-James PC, Young IE: Morphology of sporulation. In *The bacterial spore*. Edited by Gould GW, Hurst A. New York, N.Y.: Academic; 1969:39–72.
- Bylund JE, Haines MA, Piggot PJ, Higgins ML: Axial filament formation in *Bacillus subtilis*: induction of nucleoids of increasing length after addition of chloramphenicol to exponential-phase cultures approaching stationary phase. *J Bacteriol* 1993, **175**(7):1886–1890.
- Wu LJ, Errington J: *Bacillus subtilis* SpoIIIE protein required for DNA segregation during asymmetric cell division. *Science* 1994, **264**(5158):572–575.
- Bath J, Wu LJ, Errington J, Wang JC: Role of *Bacillus subtilis* SpoIIIE in DNA transport across the mother cell-prespore division septum. *Science* 2000, **290**(5493):995–997.
- Aung S, Shum J, Abanes-De Mello A, Broder DH, Fredlund-Gutierrez J, Chiba S, Pogliano K: Dual localization pathways for the engulfment proteins during *Bacillus subtilis* sporulation. *Mol Microbiol* 2007, **65**(6):1534–1546.
- Chastanet A, Losick R: Engulfment during sporulation in *Bacillus subtilis* is governed by a multi-protein complex containing tandemly acting autolysins. *Mol Microbiol* 2007, **64**(1):139–152.
- Broder DH, Pogliano K: Forespore engulfment mediated by a ratchet-like mechanism. *Cell* 2006, **126**(5):917–928.
- Ellar DJ: Spore specific structures and their function. *Symp Soc Gen Microbiol* 1978, **28**:295–325.
- Henriques AO, Moran CP Jr: Structure and assembly of the bacterial endospore coat. *Methods* 2000, **20**(1):95–110.
- Burbulys D, Trach KA, Hoch JA: Initiation of sporulation in *B. subtilis* is controlled by a multicomponent phosphorelay. *Cell* 1991, **64**(3):545–552.
- Fujita M, Losick R: Evidence that entry into sporulation in *Bacillus subtilis* is governed by a gradual increase in the level and activity of the master regulator Spo0A. *Genes Dev* 2005, **19**(18):2236–2244.
- Veening JW, Hamoen LW, Kuipers OP: Phosphatases modulate the bistable sporulation gene expression pattern in *Bacillus subtilis*. *Mol Microbiol* 2005, **56**(6):1481–1494.
- Lopez D, Kolter R: Extracellular signals that define distinct and coexisting cell fates in *Bacillus subtilis*. *FEMS Microbiol Rev* 2010, **34**(2):134–149.
- Molle V, Fujita M, Jensen ST, Eichenberger P, Gonzalez-Pastor JE, Liu JS, Losick R: The Spo0A regulon of *Bacillus subtilis*. *Mol Microbiol* 2003, **50**(5):1683–1701.
- Losick R, Stragier P: Crisscross regulation of cell-type-specific gene expression during development in *B. subtilis*. *Nature* 1992, **355**(6361):601–604.
- Hilbert DW, Piggot PJ: Compartmentalization of gene expression during *Bacillus subtilis* spore formation. *Microbiol Mol Biol Rev* 2004, **68**(2):234–262.
- Gholamhosseini A, Piggot PJ: Timing of *spoII* gene expression relative to septum formation during sporulation of *Bacillus subtilis*. *J Bacteriol* 1989, **171**(10):5747–5749.
- Duncan L, Losick R: SpoIIAB is an anti-sigma factor that binds to and inhibits transcription by regulatory protein σ^F from *Bacillus subtilis*. *Proc Natl Acad Sci U S A* 1993, **90**(6):2325–2329.
- LaBell TL, Trempe JE, Haldenwang WG: Sporulation-specific sigma factor σ^{29} of *Bacillus subtilis* is synthesized from a precursor protein, P^{31} . *Proc Natl Acad Sci U S A* 1987, **84**(7):1784–1788.
- Duncan L, Alper S, Losick R: SpoIIAA governs the release of the cell-type specific transcription factor σ^F from its anti-sigma factor SpoIIAB. *J Mol Biol* 1996, **260**(2):147–164.
- Clarkson J, Campbell ID, Yudkin MD: Physical evidence for the induced release of the *Bacillus subtilis* transcription factor, σ^F , from its inhibitory complex. *J Mol Biol* 2004, **340**(2):203–209.
- Arigoni F, Duncan L, Alper S, Losick R, Stragier P: SpoIIIE governs the phosphorylation state of a protein regulating transcription factor σ^F

- during sporulation in *Bacillus subtilis*. *Proc Natl Acad Sci U S A* 1996, **93**(8):3238–3242.
38. Karow ML, Glaser P, Piggot PJ: Identification of a gene, *spolIR*, that links the activation of σ^E to the transcriptional activity of σ^E during sporulation in *Bacillus subtilis*. *Proc Natl Acad Sci U S A* 1995, **92**(6):2012–2016.
39. Hofmeister AE, Londono-Vallejo A, Harry E, Stragier P, Losick R: Extracellular signal protein triggering the proteolytic activation of a developmental transcription factor in *B. subtilis*. *Cell* 1995, **83**(2):219–226.
40. Jonas RM, Weaver EA, Kenney TJ, Moran CP Jr, Haldenwang WG: The *Bacillus subtilis* *spolIG* operon encodes both σ^E and a gene necessary for σ^E activation. *J Bacteriol* 1988, **170**(2):507–511.
41. Errington J, Appleby L, Daniel RA, Goodfellow H, Partridge SR, Yudkin MD: Structure and function of the *spolIJ* gene of *Bacillus subtilis*: a vegetatively expressed gene that is essential for σ^G activity at an intermediate stage of sporulation. *J Gen Microbiol* 1992, **138**(12):2609–2618.
42. Partridge SR, Errington J: The importance of morphological events and intercellular interactions in the regulation of prespore-specific gene expression during sporulation in *Bacillus subtilis*. *Mol Microbiol* 1993, **8**(5):945–955.
43. Camp AH, Losick R: A novel pathway of intercellular signalling in *Bacillus subtilis* involves a protein with similarity to a component of type III secretion channels. *Mol Microbiol* 2008, **69**(2):402–417.
44. Campo N, Rudner DZ: SpoIVB and CtpB are both forespore signals in the activation of the sporulation transcription factor σ^K in *Bacillus subtilis*. *J Bacteriol* 2007, **189**(16):6021–6027.
45. Meisner J, Wang X, Serrano M, Henriques AO, Moran CP Jr: A channel connecting the mother cell and forespore during bacterial endospore formation. *Proc Natl Acad Sci U S A* 2008, **105**(39):15100–15105.
46. Kroos L, Kunkel B, Losick R: Switch protein alters specificity of RNA polymerase containing a compartment-specific sigma factor. *Science* 1989, **243**(4890):526–529.
47. Ricca E, Cutting S, Losick R: Characterization of *bofA*, a gene involved in intercompartmental regulation of pro- σ^K processing during sporulation in *Bacillus subtilis*. *J Bacteriol* 1992, **174**(10):3177–3184.
48. Cutting S, Roels S, Losick R: Sporulation operon *spolVF* and the characterization of mutations that uncouple mother-cell from forespore gene expression in *Bacillus subtilis*. *J Mol Biol* 1991, **221**(4):1237–1256.
49. Juan Wu L, Errington J: Identification and characterization of a new prespore-specific regulatory gene, *rsfA*, of *Bacillus subtilis*. *J Bacteriol* 2000, **182**(2):418–424.
50. Zheng L, Halberg R, Roels S, Ichikawa H, Kroos L, Losick R: Sporulation regulatory protein GerE from *Bacillus subtilis* binds to and can activate or repress transcription from promoters for mother-cell-specific genes. *J Mol Biol* 1992, **226**(4):1037–1050.
51. Bagyan I, Hobot J, Cutting S: A compartmentalized regulator of developmental gene expression in *Bacillus subtilis*. *J Bacteriol* 1996, **178**(15):4500–4507.
52. Halberg R, Kroos L: Sporulation regulatory protein SpoIID from *Bacillus subtilis* activates and represses transcription by both mother-cell-specific forms of RNA polymerase. *J Mol Biol* 1994, **243**(3):425–436.
53. Eichenberger P, Fujita M, Jensen ST, Conlon EM, Rudner DZ, Wang ST, Ferguson C, Haga K, Sato T, Liu JS, et al: The program of gene transcription for a single differentiating cell type during sporulation in *Bacillus subtilis*. *PLoS Biol* 2004, **2**(10):e328.
54. Angert ER, Clements KD: Initiation of intracellular offspring in *Epulopiscium*. *Mol Microbiol* 2004, **51**(3):827–835.
55. Miller DA, Choat JH, Clements KD, Angert ER: The *spolIE* homolog of *Epulopiscium* sp. type B is expressed early in intracellular offspring development. *J Bacteriol* 2011, **193**(10):2642–2646.
56. Ward RJ, Clements KD, Choat JH, Angert ER: Cytology of terminally differentiated *Epulopiscium* mother cells. *DNA Cell Biol* 2009, **28**(2):57–64.
57. Ryter A, Schaeffer P, Ionesco H: Classification cytologique, par leur stade blocage, des mutants de sporulation de *Bacillus subtilis* Marburg. *Ann Inst Pasteur* 1966, **110**:305–315.
58. Pogliano J, Osborne N, Sharp MD, Abanes-De Mello A, Perez A, Sun YL, Pogliano K: A vital stain for studying membrane dynamics in bacteria: a novel mechanism controlling septation during *Bacillus subtilis* sporulation. *Mol Microbiol* 1999, **31**(4):1149–1159.
59. Guzman P, Westpheling J, Youngman P: Characterization of the promoter region of the *Bacillus subtilis* *spolIE* operon. *J Bacteriol* 1988, **170**(4):1598–1609.
60. Angert ER, Clements KD, Pace NR: The largest bacterium. *Nature* 1993, **362**(6417):239–241.
61. Mendell JE, Clements KD, Choat JH, Angert ER: Extreme polyploidy in a large bacterium. *Proc Natl Acad Sci U S A* 2008, **105**(18):6730–6734.
62. Miller DA, Suen G, Bruce D, Copeland A, Cheng JF, Dettler C, Goodwin LA, Han CS, Hauser LJ, Land ML, et al: Complete genome sequence of the cellulose-degrading bacterium *Cellulosilyticum lentocellum*. *J Bacteriol* 2011, **193**(9):2357–2358.
63. Wang ST, Setlow B, Conlon EM, Lyon JL, Imamura D, Sato T, Setlow P, Losick R, Eichenberger P: The forespore line of gene expression in *Bacillus subtilis*. *J Mol Biol* 2006, **358**(1):16–37.
64. Steil L, Serrano M, Henriques AO, Volker U: Genome-wide analysis of temporally regulated and compartment-specific gene expression in sporulating cells of *Bacillus subtilis*. *Microbiology* 2005, **151**(Pt 2):399–420.
65. Lechat P, Hummel L, Rousseau S, Moszer I: GenoList: an integrated environment for comparative analysis of microbial genomes. *Nucleic Acids Res* 2008, **36**(Database issue):D469–D474.
66. Stephenson K, Hoch JA: Evolution of signalling in the sporulation phosphorelay. *Mol Microbiol* 2002, **46**(2):297–304.
67. Stragier P: A gene odyssey: exploring the genomes of endospore-forming bacteria. In *Bacillus subtilis and its closest relatives*. Edited by Sonenshein AL, Hoch JA, Losick R. Washington D.C.: ASM Press; 2002:519–525.
68. Paredes CJ, Alsaker KV, Papoutsakis ET: A comparative genomic view of clostridial sporulation and physiology. *Nat Rev Microbiol* 2005, **3**(12):969–978.
69. Steiner E, Dago AE, Young DI, Heap JT, Minton NP, Hoch JA, Young M: Multiple orphan histidine kinases interact directly with Spo0A to control the initiation of endospore formation in *Clostridium acetobutylicum*. *Mol Microbiol* 2011, **80**(3):641–654.
70. Sharpe ME, Errington J: Postseptational chromosome partitioning in bacteria. *Proc Natl Acad Sci U S A* 1995, **92**(19):8630–8634.
71. McBride SM, Rubio A, Wang L, Haldenwang WG: Contributions of protein structure and gene position to the compartmentalization of the regulatory proteins σ^E and SpoII in sporulating *Bacillus subtilis*. *Mol Microbiol* 2005, **57**(2):434–451.
72. Chary VK, Xenopoulos P, Piggot PJ: Blocking chromosome translocation during sporulation of *Bacillus subtilis* can result in prespore-specific activation of σ^G that is independent of σ^E and of engulfment. *J Bacteriol* 2006, **188**(20):7267–7273.
73. Eldar A, Chary VK, Xenopoulos P, Fontes ME, Loson OC, Dworkin J, Piggot PJ, Elowitz MB: Partial penetrance facilitates developmental evolution in bacteria. *Nature* 2009, **460**(7254):510–514.
74. Saller MJ, Fusetti F, Driessen AJ: *Bacillus subtilis* SpoIIJ and YqjG function in membrane protein biogenesis. *J Bacteriol* 2009, **191**(21):6749–6757.
75. Setlow B, McGinnis KA, Ragkousi K, Setlow P: Effects of major spore-specific DNA binding proteins on *Bacillus subtilis* sporulation and spore properties. *J Bacteriol* 2000, **182**(24):6906–6912.
76. Brown DP, Ganova-Raeva L, Green BD, Wilkinson SR, Young M, Youngman P: Characterization of *spo0A* homologues in diverse *Bacillus* and *Clostridium* species identifies a probable DNA-binding domain. *Mol Microbiol* 1994, **14**(3):411–426.
77. Dürre P: Ancestral sporulation initiation. *Mol Microbiol* 2011, **80**(3):584–587.
78. Ravagnani A, Jennert KC, Steiner E, Grunberg R, Jefferies JR, Wilkinson SR, Young DI, Tidswell EC, Brown DP, Youngman P, et al: Spo0A directly controls the switch from acid to solvent production in solvent-forming clostridia. *Mol Microbiol* 2000, **37**(5):1172–1185.
79. Popham DL, Stragier P: Binding of the *Bacillus subtilis* *spolVCA* product to the recombination sites of the element interrupting the σ^E -encoding gene. *Proc Natl Acad Sci U S A* 1992, **89**(13):5991–5995.
80. Stragier P, Kunkel B, Kroos L, Losick R: Chromosomal rearrangement generating a composite gene for a developmental transcription factor. *Science* 1989, **243**(4890):507–512.
81. Cutting S, Driks A, Schmidt R, Kunkel B, Losick R: Forespore-specific transcription of a gene in the signal transduction pathway that governs Pro- σ^K processing in *Bacillus subtilis*. *Genes Dev* 1991, **5**(3):456–466.
82. Frandsen N, Stragier P: Identification and characterization of the *Bacillus subtilis* *spolIP* locus. *J Bacteriol* 1995, **177**(3):716–722.

83. Margolis PS, Driks A, Losick R: **Sporulation gene *spoII*B from *Bacillus subtilis*.** *J Bacteriol* 1993, **175**(2):528–540.
84. Liu NJ, Dutton RJ, Pogliano K: **Evidence that the SpoIIIE DNA translocase participates in membrane fusion during cytokinesis and engulfment.** *Mol Microbiol* 2006, **59**(4):1097–1113.
85. Sharp MD, Pogliano K: **The membrane domain of SpoIIIE is required for membrane fusion during *Bacillus subtilis* sporulation.** *J Bacteriol* 2003, **185**(6):2005–2008.
86. Asai K, Takamatsu H, Iwano M, Kodama T, Watabe K, Ogasawara N: **The *Bacillus subtilis* *yabQ* gene is essential for formation of the spore cortex.** *Microbiology* 2001, **147**(Pt 4):919–927.
87. van Ooij C, Eichenberger P, Losick R: **Dynamic patterns of subcellular protein localization during spore coat morphogenesis in *Bacillus subtilis*.** *J Bacteriol* 2004, **186**(14):4441–4448.
88. Piggot PJ, Coote JG: **Genetic aspects of bacterial endospore formation.** *Bacteriol Rev* 1976, **40**(4):908–962.
89. Amaya E, Khvorovova A, Piggot PJ: **Analysis of promoter recognition *in vivo* directed by σ^F of *Bacillus subtilis* by using random-sequence oligonucleotides.** *J Bacteriol* 2001, **183**(12):3623–3630.
90. Daniel RA, Errington J: **Cloning, DNA sequence, functional analysis and transcriptional regulation of the genes encoding dipicolinic acid synthetase required for sporulation in *Bacillus subtilis*.** *J Mol Biol* 1993, **232**(2):468–483.
91. Errington J: ***Bacillus subtilis* sporulation: regulation of gene expression and control of morphogenesis.** *Microbiol Rev* 1993, **57**(1):1–33.
92. Alvarez Z, Abel-Santos E: **Potential use of inhibitors of bacteria spore germination in the prophylactic treatment of anthrax and *Clostridium difficile*-associated disease.** *Expert Rev Anti Infect Ther* 2007, **5**(5):783–792.
93. Myers EW, Sutton GG, Delcher AL, Dew IM, Fasulo DP, Flanigan MJ, Kravitz SA, Mobarry CM, Reinert KH, Remington KA, et al: **A whole-genome assembly of *Drosophila*.** *Science* 2000, **287**(5461):2196–2204.
94. Sutton GG, White O, Adams MD, Kerlavage AR: **TIGR Assembler: A new tool for assembling large shotgun sequencing projects.** *Genome Sequencing Tech* 1995, **1**:9–19.
95. Delcher AL, Bratke KA, Powers EC, Salzberg SL: **Identifying bacterial genes and endosymbiont DNA with Glimmer.** *Bioinformatics* 2007, **23**(6):673–679.
96. Altschul SF, Madden TL, Schaffer AA, Zhang J, Zhang Z, Miller W, Lipman DJ: **Gapped BLAST and PSI-BLAST: a new generation of protein database search programs.** *Nucleic Acids Res* 1997, **25**(17):3389–3402.
97. Lagesen K, Hallin P, Rodland EA, Staerfeldt HH, Rognes T, Ussery DW: **RNAmmer: consistent and rapid annotation of ribosomal RNA genes.** *Nucleic Acids Res* 2007, **35**(9):3100–3108.
98. Lowe TM, Eddy SR: **tRNAscan-SE: a program for improved detection of transfer RNA genes in genomic sequence.** *Nucleic Acids Res* 1997, **25**(5):955–964.
99. Tatusov RL, Galperin MY, Natale DA, Koonin EV: **The COG database: a tool for genome-scale analysis of protein functions and evolution.** *Nucleic Acids Res* 2000, **28**(1):33–36.
100. Marchler-Bauer A, Anderson JB, Derbyshire MK, DeWeese-Scott C, Gonzales NR, Gwadz M, Hao L, He S, Hurwitz DI, Jackson JD, et al: **CDD: a conserved domain database for interactive domain family analysis.** *Nucleic Acids Res* 2007, **35**(Database issue):D237–D240.
101. Sievers F, Wilm A, Dineen D, Gibson TJ, Karplus K, Li W, Lopez R, McWilliam H, Remmert M, Soding J, et al: **Fast, scalable generation of high-quality protein multiple sequence alignments using Clustal Omega.** *Mol Syst Biol* 2011, **7**:539.

doi:10.1186/1471-2164-13-265

Cite this article as: Miller et al.: The genomic basis for the evolution of a novel form of cellular reproduction in the bacterium *Epulopiscium*. *BMC Genomics* 2012 **13**:265.

Submit your next manuscript to BioMed Central and take full advantage of:

- Convenient online submission
- Thorough peer review
- No space constraints or color figure charges
- Immediate publication on acceptance
- Inclusion in PubMed, CAS, Scopus and Google Scholar
- Research which is freely available for redistribution

Submit your manuscript at
www.biomedcentral.com/submit

