

ORIGINAL ARTICLE

Open Access



# Comparison of sound touch elastography and quantification for assessing the renal pathologic changes in patients with proteinuria

Zhengmin Ruan<sup>1</sup>, Zhiying Xiao<sup>2</sup>, Xue Shi<sup>1</sup>, Yu Liang<sup>1</sup>, Liang Hou<sup>1</sup>, Tao Wu<sup>3</sup> and Mei Wu<sup>1\*</sup>

## Abstract

**Objective** Sound touch elastography (STE) and sound touch quantification (STQ) are novel imaging methods to evaluate tissue stiffness. This study aims to investigate renal stiffness in patients with chronic kidney disease (CKD) by STE and STQ, using renal biopsy as 'gold standard'.

**Methods** Between 2019 January and 2022 June, 60 patients who underwent renal biopsy for proteinuria (cases) and 45 healthy volunteers (controls) at our hospital were included in this study. The maximum and mean elastic modulus (E<sub>max</sub>, E<sub>mean</sub>) of region of interest in right kidney were measured by STE and STQ techniques. Biochemical profiles and renal biopsy findings were recorded.

**Results** Both E<sub>max</sub> and E<sub>mean</sub> measured by STE were significantly different between cases and controls. ROC analysis of STE measurements revealed using a cutoff of 13.53 kPa for E<sub>max</sub> and 10.16 kPa for E<sub>mean</sub>, the area under the curve (AUC) to distinguish nephropathy from healthy was 0.718 and 0.744. Analysis of ROC for STQ measurements showed that using a cutoff value of 15.87 kPa for E<sub>max</sub> and 9.95 kPa for E<sub>mean</sub>, the AUC for the nephropathy was 0.612 and 0.569. E<sub>max</sub> and E<sub>mean</sub> values were significantly different among CKD patients with mild, moderate and severe pathological stage. The E<sub>max</sub> value for STE was positively related to Scr,  $\beta$ 2-MG ( $r=0.257, 0.292, p<0.05$ ).

**Conclusion** Both STE and STQ are non-invasive, feasible methods to quantitatively evaluate renal stiffness. STE is more effective than STQ in the diagnosis of CKD patients with proteinuria.

**Critical relevance statement** Sound touch elastography is more effective than sound touch quantification in the diagnosis of chronic kidney disease patients with proteinuria.

## Key points

- E<sub>max</sub> and E<sub>mean</sub> measured by STE were different between cases and controls.
- E<sub>max</sub> and E<sub>mean</sub> were different among CKD patients with different pathological stages.
- The E<sub>max</sub> value for STE was positively related to serum creatinine,  $\beta$ 2-microglobulin

**Keywords** Sound touch elastography, Sound touch quantification, Shear wave, Ultrasonography, Chronic kidney disease

\*Correspondence:

Mei Wu

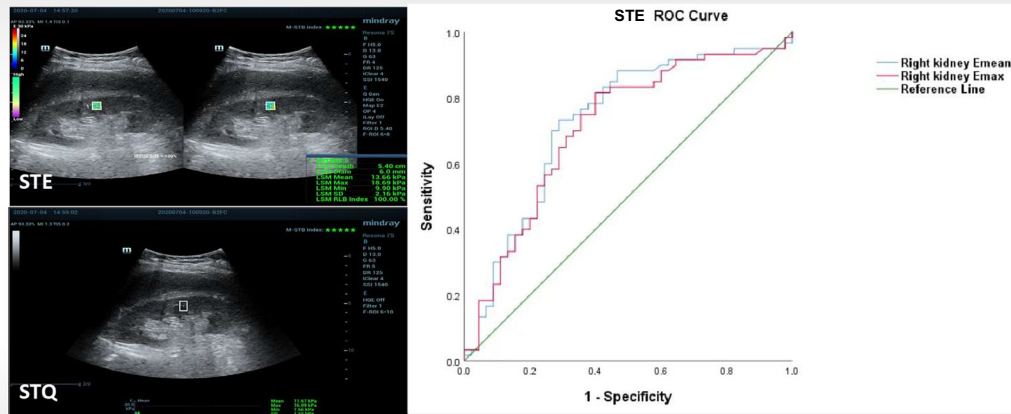
wumei8077@163.com

Full list of author information is available at the end of the article

## Graphical Abstract

## Comparison of sound touch elastography and quantification for assessing the renal pathologic changes in patients with proteinuria

Insights into Imaging  
 ESRF EUROPEAN SOCIETY  
 OF RADIOLOGY



Sound touch elastography is more effective than sound touch quantification in the diagnosis of chronic kidney disease patients with proteinuria.

Insights Imaging (2023) Ruan Z, Xiao Z, Shi X et al. DOI: 10.1186/s13244-023-01476-9

## Introduction

Chronic kidney disease (CKD) is defined as structural or functional abnormalities of the kidney for  $\geq 3$  months [1]. It is a global health problem, affecting 10.6–13.4% adults [2]. The clinical presentations can vary from asymptomatic or non-specific symptoms such as nausea, fatigue, to edema, proteinuria or even death. Proteinuria can serve as an indicator of early renal disease, and has been used along with the estimated glomerular filtration rate (eGFR) in the classification of CKD. Proteins in the urine can cause glomerulosclerosis and lead to tubulointerstitial disease [3].

The progression of CKD is characterized histologically by glomerulosclerosis, tubulointerstitial fibrosis, and vascular sclerosis [4, 5]. Renal biopsy is currently the gold standard for assessing renal fibrosis and CKD diagnosis. However, even it is a minimally invasive procedure, there are risks of complications with vascular complications. It is believed the risk of bleeding during renal biopsy increased with the severity of renal failure [6]. Therefore, a non-invasive method instead of repeated biopsy is essential in active monitoring of CKD.

Ultrasonography (US) is a safe, affordable and non-invasive procedure to examine the kidneys. Renal length, cortical thickness and echogenicity measured by

ultrasound could help to assess renal function impairment in CKD patients [7, 8]. However, US is a highly examiner-dependent, non-quantitative imaging technique. Abnormal US findings usually represent advanced rather than early stage of renal dysfunction [9]. Previous studies have reported that routine US had limited diagnostic utility in CKD classification [10–12].

Ultrasonic shear wave elastography (SWE) is a non-invasive ultrasound elastography technique that uses shear waves to quantitatively measure tissue stiffness and it has been used to determine the stiffness of liver, kidney, thyroid and muscles [13–16]. A recent study reported that SWE was an effective way to evaluate the changes in the stiffness and elasticity of the renal parenchyma in diabetic nephropathy [17]. However, the relationship between renal fibrosis and stiffness still remains uncertain in various studies [18, 19].

Sound touch elastography (STE) and sound touch quantification (STQ) are two modified shear wave elastography methods to evaluate tissue stiffness [13]. STE/STQ use acoustic radiation force impulse (ARFI) elastography techniques to generate shear waves, then tracks the propagation of the shear waves and continuously detects and records the displacement of tissue in the region of interest (ROI) by ultra-wide beam tracking imaging

technology. STQ is a point SWE method that uses ARFI to aim for one small ROI to generate a quantitative reading. A larger shear wave velocity (SWV) means a higher stiffness of the tissue. It usually indicates the average rather than maximum elastic modulus of the ROI [20]. In contrast, STE is a bi-dimensional SWE (2D-SWE) method that uses multiple ARFI to target an extended ROI to display a real-time colored stiffness map [21]. It can calculate the SWV and derives the corresponding and maximum elastic modulus [20]. The STE/STQ technology ensures that the shear wave can be recorded more rapidly, accurately, and completely than conventional SWE. There are few studies evaluating renal stiffness using STE or STQ.

The present study aimed to quantitatively analyze renal fibrosis in those patients with unexplained proteinuria using STE and STQ.

## Patients and methods

### Patient population

A prospective study was conducted on consecutive patients admitted to the Department of Nephrology in our hospital between 2019 January and 2022 June. Patients with unexplained proteinuria who underwent kidney biopsy were recruited. Those patients with proteinuria who had preexisting hypertension, diabetes, nephrotic syndrome or immunologic nephritis also met inclusion criteria. Patients were excluded if they were not able to attend kidney biopsy or kidney ultrasound elastography; if infection, stone or tumor induced proteinuria; in case the patients had renal replacement

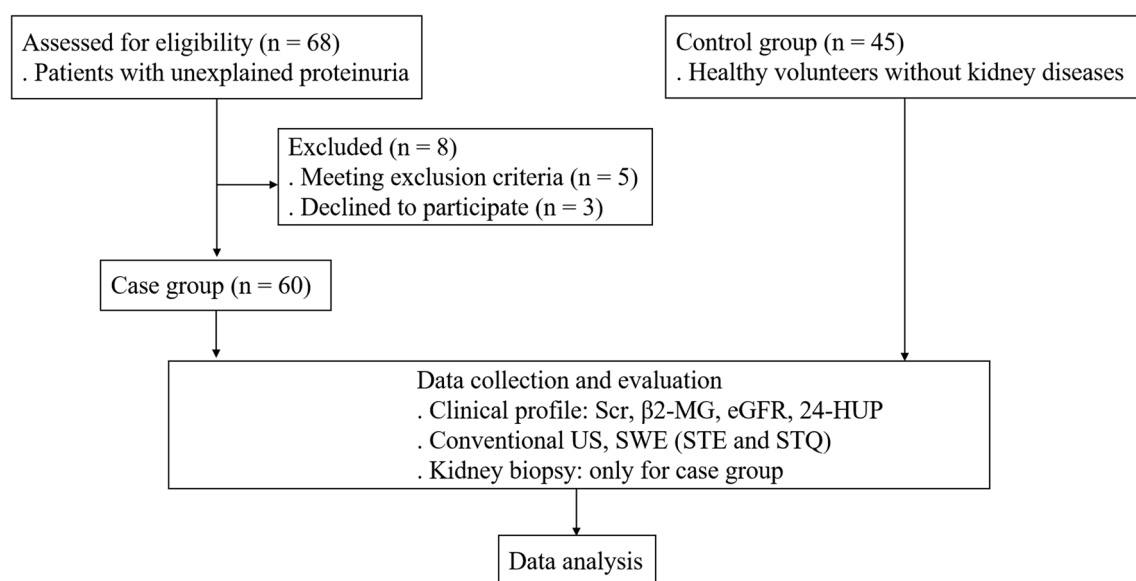
therapy, kidney transplant, hydronephrosis, renal calculus or tumor. One hundred and five subjects were finally enrolled and analyzed, which included 60 patients with proteinuria (“cases”) and 45 healthy volunteers (“controls”) from the Physical Examination Center in our hospital. Those individuals with abnormal urinalysis, kidney US or renal function were not eligible in the control group (Fig. 1).

This study was approved by the ethics committee of our hospital and was performed in accordance with the ethical guidelines of the Helsinki Declaration and its later amendments. Written informed consent was obtained from all participants.

Demographic data including age, sex, height, weight and body mass index (BMI) were collected. The clinical profile including kidney biopsy, serum creatinine (Scr),  $\beta$ 2-microglobulin ( $\beta$ 2-MG), glomerular filtration rate (eGFR) and 24-h urine protein (24-HUP) were recorded.

### Conventional renal ultrasonography and shear wave elastography

Both conventional US and SWE were performed with the convex SC6-1U probe (3.5–5 MHz) on the Mindray ultrasound system (Resona 7s, Shenzhen, China). All sonographic procedures were performed by a senior sonographer who was unaware of group assignments. After emptying bladder participants were scanned in the lateral recumbent position. STE and STQ measurements were obtained in a single region of interest (8×6 mm for STE, 6×10 mm for STQ), the middle area of right renal parenchyma with specific avoidance of renal pyramids.



**Fig. 1** Flow chart of the study. Scr serum creatinine,  $\beta$ 2-MG  $\beta$ 2-microglobulin, eGFR estimated glomerular filtration rate, 24-HUP 24-h urine protein, US ultrasonography, SWE shear wave elastography, STE sound touch elastography, STQ sound touch quantification

Three readings were taken per participant and maximum, and mean elastic values ( $E_{max}$ ,  $E_{mean}$ ) were recorded as Young's modulus in kPa (Fig. 2).

### Kidney biopsy

The percutaneous biopsy was performed under real-time ultrasound guidance, aimed to the lower pole of the right kidney (Fig. 2). The severity of renal impairment was categorized as mild ( $\leq 9$ ), moderate (10–18), or severe ( $\geq 19$ ) according to a previously published pathology scoring system [22].

### Statistical analysis

Categorical variables were expressed as numbers and percentages. The K–S test was performed to test the normality distribution for continuous data. For normally distributed data, variables were summarized as means (standard deviation, SD); while non-normally distributed, median and (interquartile range, IQR) was reported. Student's *t* test or One-Way ANOVA was used to determine whether or not there is a statistically significant difference between the means of two or more groups. Mann–Whitney *U* test or Wilcoxon rank-sum test was used to compare the differences between two or more groups if variables are not normally distributed. Pearson correlation analysis was used to analyze the relationship

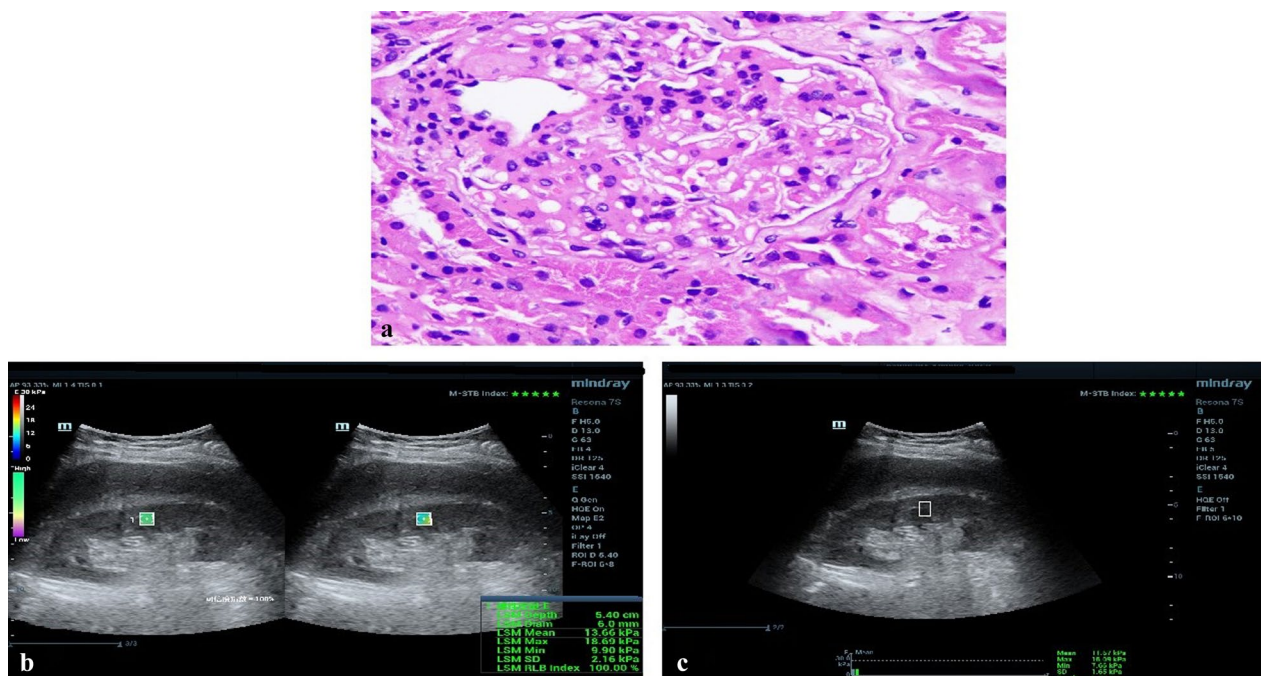
between two normally distributed variables, while Spearman's correlation was performed on two non-normally distributed variables. The receiver operating characteristic (ROC) curve, and area under the ROC curve (AUC) were calculated to determine the cutoff values for differentiating normal and renal pathologies. Statistical analyses were conducted using SPSS version 26.0 (SPSS Inc, Chicago, IL, USA), setting the statistical significance as a *p* value  $< 0.05$ .

## Results

### Patients' characteristics

In this study, there were 60 cases, 37 were male and 23 were female. The mean age was  $40.85 \pm 15.06$  years (range, 8–75 years). Forty-five healthy subjects were included as controls (10 males and 35 females). The mean age was  $39.29 \pm 15.36$  years (range, 23–72 years). Mean height, weight and BMI were  $1.68 \pm 0.09$  m,  $71.50 \pm 15.00$  kg,  $25.21 \pm 3.99$  kg/m<sup>2</sup> for cases, and  $1.65 \pm 0.06$  m,  $65.93 \pm 11.20$  kg,  $24.15 \pm 3.46$  kg/m<sup>2</sup> for controls. There were no significant differences between cases and controls in terms of age, height or BMI. The body weight was significantly higher for cases than controls ( $p < 0.05$ ) (Table 1).

Kidney biopsy findings revealed membranous nephropathy in 19 cases, IgA nephropathy in ten, minimal change



**Fig. 2** A 58-year-old man underwent renal biopsy and shear wave elastography of his right kidney. **a** The pathological examination revealed IgA nephropathy (H&E staining); **b** STE examination tested his  $E_{max}$  (18.69 kPa) and  $E_{mean}$  (13.66 kPa) values; **c** STQ examination tested his  $E_{max}$  (16.09 kPa) and  $E_{mean}$  (11.67 kPa) values. STE sound touch elastography, STQ sound touch quantification,  $E_{max}$  maximum elastic value,  $E_{mean}$  mean elastic value

**Table 1** Demographics of patients with proteinuria and control subjects

	Control group (n = 45)	Case group (n = 60)	T value	p value
Gender			–	0.000**
Female, n (%)	35 (77.78)	23 (38.33)		
Male, n (%)	10 (22.22)	37 (61.67)		
Age (year)	39.29 ± 15.36	40.85 ± 15.06	– 0.521	0.603
Height (m)	1.65 ± 0.06	1.68 ± 0.09	– 1.705	0.091
Weight (kg)	65.93 ± 11.20	71.50 ± 15.00	– 2.089	0.039*
BMI (kg/m <sup>2</sup> )	24.15 ± 3.46	25.21 ± 3.99	– 1.431	0.156

BMI body mass index

\* $p < 0.05$ ; \*\* $p < 0.01$ **Table 2** Comparison of Emax and Emean values measured by STE and STQ between cases and controls

	Control group (n = 45)	Case group (n = 60)	T value	p
STE (kPa)				
Emean	9.83 ± 3.21	12.14 ± 3.84	– 3.271	0.001**
Emax	14.70 ± 4.61	17.81 ± 5.64	– 3.020	0.003**
STQ (kPa)				
Emean	10.65 ± 2.86	11.47 ± 3.36	– 1.303	0.196
Emax	17.19 ± 4.98	19.10 ± 5.75	– 1.784	0.077

STE sound touch elastography, STQ sound touch quantification, Emax maximum elastic value, Emean mean elastic value

\* $p < 0.05$ ; \*\* $p < 0.01$ 

nephropathy in eight, allergic interstitial nephritis in six, allergic purpura nephritis in six, focal segmental glomerulosclerosis in three, systemic lupus erythematosus with nephritis in two and other pathological types in six.

#### Maximum and minimum elastic modulus

STE and STQ findings of right kidney were listed in Table 2. It was demonstrated that Emax and Emean were significantly different between cases and controls for STE, but not for STQ.

#### ROC curve analysis

ROC analysis of STE measurements revealed that using a cutoff of 13.53 kPa for Emax, the AUC to distinguish nephropathy from healthy was 0.718 (95% confidence interval [CI]: 0.615–0.821), with a sensitivity and specificity of 82.76%, 59.09%, respectively (Table 3; Fig. 3). The Youden index was 0.418. While using a cutoff of 10.16 kPa for Emean, a value of 0.744 (95% CI: 0.643–0.846) for AUC diagnose nephropathy from healthy with a sensitivity and specificity of 75.86%, 70.45%, respectively (Table 3; Fig. 3). The Youden index was 0.463.

**Table 3** The optimal diagnostic cut-off values of Emax and Emean measured by STE to diagnose nephropathy

	Cut-off value	Sensitivity (%)	Specificity (%)	Youden index
STE (kPa)				
Emean	10.16	75.86	70.45	0.463
Emax	13.53	82.76	59.09	0.418

STE sound touch elastography, Emax maximum elastic value, Emean mean elastic value

#### Renal pathological features

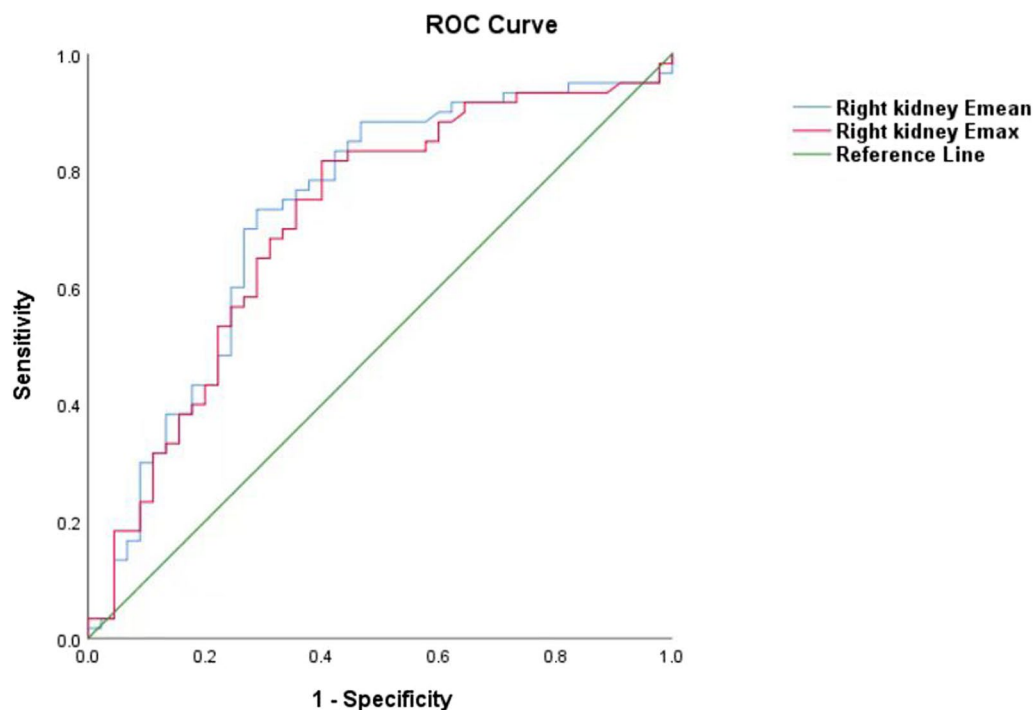
The kidney biopsy findings showed that 24 patients had mild renal impairment, 27 had moderate and 9 severe. STE measurements of three renal impairment levels demonstrated significantly different Emean and Emax values for right kidney (Table 4); In addition, no significant difference of Emean or Emax values measured by STQ for right kidney was found among those different renal impairment levels.

#### Relationship between SWE values and clinical parameters in proteinuria cases

There was a significantly positive correlation between Emax value for STE and Scr,  $\beta$ 2-MG ( $r = 0.257$ ,  $0.292$ ,  $p < 0.05$ ) (Fig. 4). The correlation between Emax value for STE and eGFR ( $r = -0.135$ ,  $p = 0.304$ ) or 24-HUP ( $r = -0.05$ ,  $p = 0.703$ ) was negative, not significant. Furthermore, a positive insignificant correlation was observed between Emean values for STE and Scr,  $\beta$ 2-MG ( $r = 0.128$ ,  $0.240$ ,  $p = 0.328$ ,  $0.065$ ), and a negative insignificant correlation between Emean for STE and eGFR, 24-HUP ( $r = -0.054$ ,  $-0.117$ ,  $p = 0.683$ ,  $0.374$ ).

No correlations between Emean value for STQ and Scr,  $\beta$ 2-MG, eGFR or 24-HUP. Meanwhile, there was no relationship between Emax values for STQ and Scr,  $\beta$ 2-MG, eGFR or 24-HUP.





**Fig. 3** ROC curve of STE measurements for Emax (AUC= 0.718) and Emean (AUC= 0.744) values to diagnose nephropathy. *STE* sound touch elastography, *ROC* receiver operating characteristic, *Emax* maximum elastic value, *Emean* mean elastic value

**Table 4** Comparison of Emax and Emean values measured by STE and STQ in patients with different pathological stages of nephropathy

Group	STE (kPa)		STQ (kPa)	
	Emean	Emax	Emean	Emax
Control group (n = 45)	9.83 ± 3.21	14.70 ± 4.61	10.65 ± 2.86	17.19 ± 4.98
Renal pathological stage (n = 60)				
Mild (n = 24)	11.65 ± 2.36	16.79 ± 3.74	10.84 ± 2.44	19.21 ± 4.76
Moderate (n = 27)	12.39 ± 3.35	18.47 ± 4.97	11.85 ± 3.64	18.88 ± 4.99
Severe (n = 9)	12.69 ± 7.43	18.58 ± 10.45	11.98 ± 4.55	19.45 ± 9.85
F value	3.779	3.535	1.077	1.071
p	0.013*	0.017*	0.362	0.365

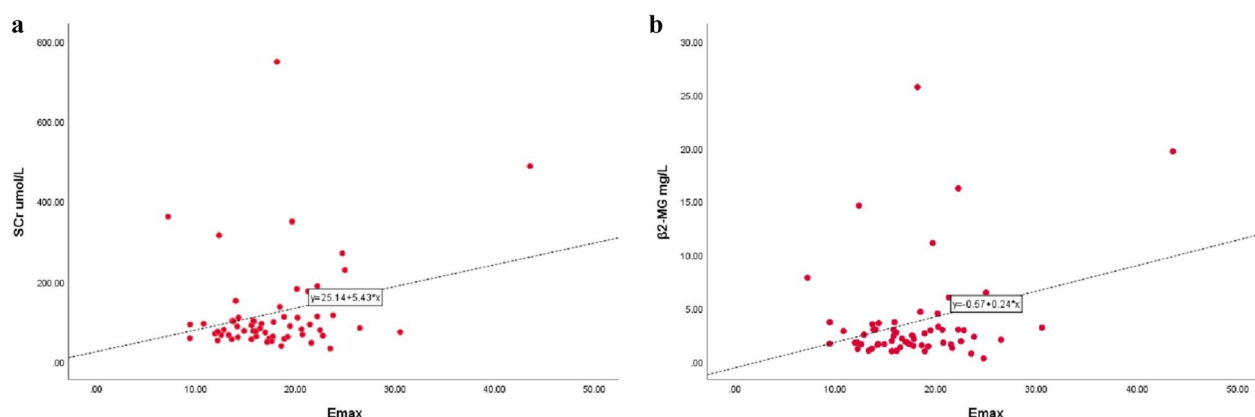
## Discussion and conclusions

In the present study, we found Emax and Emean measured by STE were significantly different between cases and controls. Additionally, both Emax and Emean values gradually increased as the renal impairment progressed from mild, moderate to severe. Our findings are consistent with another study which investigated 75 CKD patients undergoing renal biopsy and SWE [23].

It revealed Young's modulus was associated with the patient's renal pathological scores, particularly with tubulointerstitial score ( $\rho=0.442$ ,  $p<0.001$ ) and glomerular score ( $\rho=0.375$ ,  $p=0.001$ ). The relationship between renal fibrosis and stiffness is still unclear. One study confirmed a positive relationship between renal fibrosis score and SWV [19], while another study showed no association existed [24]. It is likely the decline of renal blood perfusion played a stronger role than tissue fibrosis in renal stiffness [25]. Controversially, another study concluded that there was no relationship between SWV and renal fibrosis or blood perfusion [24].

Unlike the STE findings, Emax and Emean measured by STQ were not significantly different between cases and controls in this study. We speculated this discrepancy was due to different STE and STQ mechanisms. Compared with STE, STQ usually indicates the average rather than maximum elastic modulus of the ROI. Conversely, STE provides the maximum elastic modulus of ROI, displays a real-time colored stiffness map and reduces the influence of reverberation artifact [20, 21]. Thus STE is superior to STQ in reflecting renal stiffness.

Elasticity can be measured from an ROI and can be displayed as the maximum (Emax), and mean (Emean) of Young's modulus elasticity measurements. One study found that both Emax and Emean were effective to investigate breast lesions. Two other studies demonstrated



**Fig. 4** The Emax value for STE was positively related to Scr,  $\beta$ 2-MG in the case group ( $r=0.257, 0.292, p<0.05$ ). STE sound touch elastography, Emax maximum elastic value, SCr blood creatinine,  $\beta$ 2-MG  $\beta$ 2-microglobulin

that Emax was a better SWE parameter than Emean to distinguish benign from malignant breast lesions [26, 27]. To the best of our knowledge, this is the first study to compare STE performance with that of STQ for renal stiffness. We performed STE measurements and found Emax had a higher sensitivity than Emean (STE: 82.76 vs. 75.86%). However, the Youden index was low (STE: 0.418). The Emax cut-off value (STE: 13.53 kPa) suggested a considerable diagnostic accuracy and high false negative rate.

In this study, the association between elastic and clinical parameters was complicated, making it difficult to draw a definitive conclusion. Similarly, both positive and negative relationship between SWV and eGFR was found in various papers [28, 14]. It is reasonable to assume that renal stiffness is not dramatically correlated with Scr,  $\beta$ 2-MG, eGFR, or 24hUP, which probably results from diverse pathological changes. Thus it's essential to subgroup pathological types in further research.

There are some limitations to this study. Breathing and excess belly fat might affect the reliability of SWE results; we didn't analyze the impact of age, blood perfusion and pressure or cardiovascular diseases on renal stiffness; the sample size is small. It is necessary to compare different pathological types in a larger population in future work.

In conclusion, both STE and STQ are promising, non-invasive, feasible methods to quantitatively evaluate renal stiffness for CKD patients with proteinuria. STE is more effective than STQ to assess renal stiffness.

#### Abbreviations

ARFI	Acoustic radiation force impulse
AUC	Area under the receiver operating characteristic curve
BMI	Body mass index
CI	Confidence interval
CKD	Chronic kidney disease
eGFR	Estimated glomerular filtration rate
Emax	Maximum elastic modulus

Emean	Mean elastic modulus
24-HUP	24-Hour urine protein
IQR	Interquartile range
ROC	Receiver operating characteristic curves
ROI	Region of interest
SCr	Serum creatinine
SD	Standard deviation
STE	Sound touch elastography
STQ	Sound touch quantification
SWE	Shear wave elastography
SWV	Shear wave velocity
US	Ultrasonography
$\beta$ 2-MG	$\beta$ 2-Microglobulin

#### Author contributions

RZ and WM conceived the study and designed the experimental process. RZ, XZ, SX and WT carried out sample collection. RZ, HL and LY carried out data analysis and supervised this study. RZ and WM wrote the manuscript and interpretation of data.

#### Funding

This work was financially supported by the Clinical Medical Science and Technology Innovation Plan of Jinan Municipal Bureau of Science and Technology (202019042).

#### Availability of data and materials

The datasets used and/or analyzed during the current study are available from the corresponding author on reasonable request.

#### Declarations

##### Ethics approval and consent participate

This study was approved by the Ethics Committee of Second Hospital of Shandong University. Informed consent was obtained from each participant or guardian.

##### Consent for publication

A consent to publication form has been signed by each participant or guardian.

##### Competing interests

The authors declare that they have no competing interests.

##### Author details

<sup>1</sup>Department of Ultrasound, The Second Hospital of Shandong University, No 247, Beiyuan Street, Jinan 250033, Shandong, China. <sup>2</sup>Department of Urology, The Second Hospital of Shandong University, Jinan, Shandong, China. <sup>3</sup>Department of Nephrology, The Second Hospital of Shandong University, Jinan, Shandong, China.

Received: 23 March 2023 Accepted: 3 July 2023

Published online: 04 August 2023

## References

- Kipp R, Kellerman PS (2009) Chronic kidney disease. In: Moorthy AV (ed) Pathophysiol Kidney dis hypertens. Elsevier, Philadelphia, pp 145–157
- Hill NR, Fatoba ST, Oke JL et al (2016) Global prevalence of chronic kidney disease: a systematic review and meta-analysis. *PLoS One* 11(7):e0158765
- Keane WF, Eknoyan G (1999) Proteinuria, albuminuria, risk, assessment, detection, elimination (PARADE): a position paper of the National Kidney Foundation. *Am J Kidney Dis* 33:1004–1010
- Fogo AB, Kon V (2001) Pathophysiology of progressive renal diseases—an overview. In: Immunologic renal diseases, 2nd edn. LippincottWilliams & Wilkins, pp 55–72
- López-Novoa JM, Rodríguez-Peña AB, Ortiz A et al (2011) Etiopathology of chronic tubular, glomerular and renovascular nephropathies: clinical implications. *J Transl Med* 9(1):13
- Christensen J, Lindequist S, Knudsen DU et al (1995) Ultrasound-guided renal biopsy with biopsy gun technique—efficacy and complications. *Acta Radiol* 36(3):276–279
- Tuma J (2013) The focal renal lesions. *Praxis* 102(12):731–740
- Yamashita SR, von Atzingen AC, Iared W et al (2015) Value of renal cortical thickness as a predictor of renal function impairment in chronic renal disease patients. *Radiol Bras* 48:12–16
- Lin HY, Lee YL, Lin KD et al (2017) Association of renal elasticity and renal function progression in patients with chronic kidney disease evaluated by real-time ultrasound elastography. *Sci Rep* 7:43303
- Sicari R, Gargani L, Wiecek A et al (2013) The use of echocardiography in observational clinical trials: the EURECA-m registry. *Nephrol Dial Transplant* 28(1):19–23
- Gross JL, de Azevedo MJ, Silveiro SP et al (2005) Diabetic nephropathy: diagnosis, prevention, and treatment. *Diabetes Care* 28:164–176
- KDOQI (2007) Clinical practice guidelines and clinical practice recommendations for diabetes and chronic kidney disease. *Am J Kidney Dis* 49(2 Suppl 2):S12–S154
- Xia SJ, Ren XP, Ni ZX et al (2019) A noninvasive method-shear-wave elastography compared with transient elastography in evaluation of liver fibrosis in patients with chronic hepatitis B. *Ultrasound Q* 35:147–152
- Leong SS, Wong JHD, Md Shah MN et al (2018) Shear wave elastography in the evaluation of renal parenchymal stiffness in patients with chronic kidney disease. *Br J Radiol* 91(1089):20180235
- Sebag F, Vaillant-Lombard J, Berbis J et al (2010) Shear wave elastography: a new ultrasound imaging mode for the differential diagnosis of benign and malignant thyroid nodules. *J Clin Endocrinol Metab* 95:5281–5288
- Zhou WC, Ma XJ, Pan L et al (2020) Application of conventional ultrasound coupled with virtual touch tissue imaging and quantification in the assessment of muscle strength. *Ann Palliat Med* 9:3402–3409
- Hassan K, Loberant N, Abbas N et al (2016) Shear wave elastography imaging for assessing the chronic pathologic changes in advanced diabetic kidney disease. *Ther Clin Risk Manag* 12:1615–1622
- Cui G, Yang Z, Zhang W et al (2014) Evaluation of acoustic radiation force impulse imaging for the clinicopathological typing of renal fibrosis. *Exp Ther Med* 71:233–235
- Hu Q, Wang XY, He HG et al (2014) Acoustic radiation force impulse imaging for noninvasive assessment of renal histopathology in chronic kidney disease. *PLoS One* 912:e115051
- Song P, Zhao H, Manduca A et al (2012) Comb-push ultrasound shear elastography (CUSE): a novel method for two-dimensional shear elasticity imaging of soft tissues. *IEEE Trans Med Imaging* 31(9):1821–1832
- Sigrist R, Liao J, Kaffas AE et al (2017) Ultrasound elastography: review of techniques and clinical applications. *Theranostics* 7(5):1303–1329
- Katafuchi R, Kiyoshi Y, Oh Y et al (1998) Glomerular score as a prognosticator in IgA nephropathy: its usefulness and limitation. *Clin Nephrol* 49:1–8
- Leong SS, Wong J, Md SM et al (2021) Shear wave elastography accurately detects chronic changes in renal histopathology. *Nephrology (Carlton)* 26(1):38–45
- Wang L, Xia P, Lv K et al (2014) Assessment of renal tissue elasticity by acoustic radiation force impulse quantification with histopathological correlation: preliminary experience in chronic kidney disease. *Eur Radiol* 24(7):1694–1699
- Asano K, Ogata A, Tanaka K et al (2014) Acoustic radiation force impulse elastography of the kidneys: is shear wave velocity affected by tissue fibrosis or renal blood flow? *J Ultrasound Med* 33(5):793–801
- Shi XQ, Li JL, Li QY et al (2015) Performance of ultrasonic shear wave elastography in assessing benign and malignant breast lesions. *Zhongguo Yi Xue Ke Xue Yuan Xue Bao* 37:294–299
- Berg WA, Cosgrove DO, Dore CJ et al (2012) BE1 Investigators. Shear-wave elastography improves the specificity of breast US: the BE1 multinational study of 939 masses. *Radiology* 262:435–449
- Grosu I, Bob F, Sporea I et al (2018) Correlation of point shear wave velocity and kidney function in chronic kidney disease. *J Ultrasound Med* 37(11):2613–2620

## Publisher's Note

Springer Nature remains neutral with regard to jurisdictional claims in published maps and institutional affiliations.

**Submit your manuscript to a SpringerOpen<sup>®</sup> journal and benefit from:**

- Convenient online submission
- Rigorous peer review
- Open access: articles freely available online
- High visibility within the field
- Retaining the copyright to your article

Submit your next manuscript at ► [springeropen.com](https://www.springeropen.com)