

RESEARCH

Open Access



Trajectories and determinants of ageing in Portugal: insights from EpiDoC, a nationwide population-based cohort

David G. Lopes^{1*†}, Nuno Mendonça^{1†}, Ana Rita Henriques¹, Jaime Branco^{1,2}, Helena Canhão^{1,2} and Ana M Rodrigues^{1,3}

Abstract

Introduction The population in Portugal is ageing due to increased life expectancy and reduced fertility rates. We aimed to estimate the health trajectories of Portuguese older adults (60+ years old) in a 10-year period and to assess associated sociodemographic, lifestyle factors and multimorbidity status.

Methods Using the population-based EpiDoC cohort, we estimated the trajectories of health-related quality of life and physical function of 4135 Portuguese older adults over 10 years using linear mixed models. Factors associated to health-related quality of life and physical function were assessed using linear mixed models and random intercept tobit regression, respectively.

Results The physical disability of participants increased by 0.263 (0.240, 0.286), and health-related quality of life declined by 0.074 (-0.084, -0.063), over 10 years. With advancing age, older adults reported a faster reduction in health-related quality of life and faster increase in physical disability. In general, women were in worse health than men at baseline, albeit with a similar rate of change throughout the follow-up. Higher education and regular exercise were associated with better health-related quality of life and physical function while multimorbidity and excess weight were associated with worse reporting of these outcomes.

Conclusions These findings, based on longitudinal data with 10 years of follow-up, are essential to effectively plan resource allocation, plan better healthcare and design informed public health policies in Portugal.

Brief summary This study characterizes ageing in Portugal showing increased physical disability and decreased health-related quality of life with advancing age older adults, helping to develop public health policies.

Key points

- Increased life expectancy and lower fertility rates are causing the Portuguese population to age rapidly.
- The results of this long-term follow-up study show increased physical disability and decreased health-related quality of life with advancing age in older adults, and a faster worsening of these outcomes at older ages. Older

[†]David G. Lopes and Nuno Mendonça these authors have contributed equally to this work and share first authorship.

*Correspondence:
David G. Lopes
davidglopes@nms.unl.pt

Full list of author information is available at the end of the article



© The Author(s) 2023. **Open Access** This article is licensed under a Creative Commons Attribution 4.0 International License, which permits use, sharing, adaptation, distribution and reproduction in any medium or format, as long as you give appropriate credit to the original author(s) and the source, provide a link to the Creative Commons licence, and indicate if changes were made. The images or other third party material in this article are included in the article's Creative Commons licence, unless indicated otherwise in a credit line to the material. If material is not included in the article's Creative Commons licence and your intended use is not permitted by statutory regulation or exceeds the permitted use, you will need to obtain permission directly from the copyright holder. To view a copy of this licence, visit <http://creativecommons.org/licenses/by/4.0/>. The Creative Commons Public Domain Dedication waiver (<http://creativecommons.org/publicdomain/zero/1.0/>) applies to the data made available in this article, unless otherwise stated in a credit line to the data.

adults with higher education and regular exercise had better health-related quality of life and physical function while multimorbidity and excess weight were associated with worse reporting of these outcomes.

• This study characterizes ageing in Portugal which is essential to develop evidence-based public health policies.

Keywords Disability, Health-related quality of life, Older adults, Trajectories, Longitudinal

Introduction

In 2021, older adults (60+ years) comprised 27.4% of Europeans, an increase of 3.6% from 23.8% a decade earlier [1]. Portugal has one of the oldest populations in Europe due to an increase in life expectancy and reduced fertility rates. In that same year, older adults comprised 29.1% of the population, an increase of 4.5% from 24.6% 10 years before [1]. Regarding general life expectancy in Portugal, a person with 60+ years in 2010 should expect to live on average 23.1 years, and in 2019 that average expectancy increased to 24.3 years [2]. However, healthy life expectancy (HALE) in Portugal, the number of years an individual can expect to live in good health or disability-free, has not kept pace. HALE at age 60 was estimated to be 16.3 years for men and 18.8 years for women in 2010, and 17.3 years for men and 19.8 years for women in 2019 [2]. These estimates are considerably lower than the European Union's (EU) average and the gap has been widening [2].

The increase in the number of older adults, years spent in bad health and lower fertility rates present new challenges to Portuguese governments. To this end, having up to date and robust estimates of the ageing trajectories of Portuguese older adults is essential for decision-makers to design informed public health policies, and effectively plan budgetary and human resource allocation to long-term care and healthcare, targeting those that need it the most, as well as ensuring availability of carers and supporting informal carers. However, there is a scarcity of population-based health data in Portugal, especially for older adults and that prospectively follows individuals for extended periods of time. We previously showed that Portuguese older adults had a high prevalence of multimorbidity (78%) and unhealthy lifestyles which further increase the vulnerability of this group and the need for dedicated interventions [3].

Following from previous results and to provide a more informed picture of the health of Portuguese older adults (60+ years old), we aimed to estimate the trajectories of older men and women, over 10 years in relation to health-related quality of life and physical function as well as to assess associated sociodemographic, lifestyle and health factors.

Methods

Study population

The EpiDoC cohort is composed of a nationally representative sample of the adult Portuguese population

(≥ 18 years old) living in private households of mainland Portugal and Islands (Madeira and Azores). Details on recruitment and sampling are described elsewhere [4]. Briefly, at baseline (wave 1 - September 2011 to December 2013), 10,661 participants were visited in their homes by a team of trained research assistants where a structured questionnaire on sociodemographics, lifestyles and health was used. Subsequent follow-up waves (wave 2 - March 2013 to July 2015, wave 3 - September 2015 to July 2016, wave 4 - March to August 2021) were conducted through phone call interviews by trained research assistants, using the same core questionnaire. This study included 4135 participants aged 60 or older at baseline (EpiDoC 1) that were followed throughout subsequent waves, i.e., EpiDoC 2 ($n=2907$), EpiDoC 3 ($n=2152$) and the final wave, EpiDoC 4 ($n=1237$). The most common reasons for non-participation in follow-up waves were being unable to interview the eligible participant, invalid contacts, wishing to leave the study, or death (Fig. 1).

Physical function (disability index and domains)

Physical function was assessed using the European-Portuguese version of the Health Assessment Questionnaire (HAQ) that evaluates the difficulty performing 20 common daily activities over the previous week with four possible answers each (without difficulty, some difficulty, with much difficulty, unable to do). These were classified into 8 domains: dressing and grooming; arising; eating; walking; hygiene; reach; grip; and common daily activities (e.g., running errands and shopping, getting in and out of a car and doing chores). A disability index was computed for HAQ ranging from 0 (no disabilities) to 3 (complete disability) [5]. A higher disability index can be interpreted as less functional ability.

Health-related quality of life

Health-related quality of life (HRQoL) was measured using the European-Portuguese validated version of the EuroQol 5-dimensions questionnaire (EQ-5D), comprised of five dimensions (mobility, self-care, usual activities, pain/discomfort, and anxiety/depression) with three possible responses each (without problems, some problems, extreme problems). The descriptive system was converted into a summary index score ranging from -1 (states worse than death, with 0 equivalent to death) to 1 (full health) [6]. A lower EQ-5D score can be interpreted as lower HRQoL.

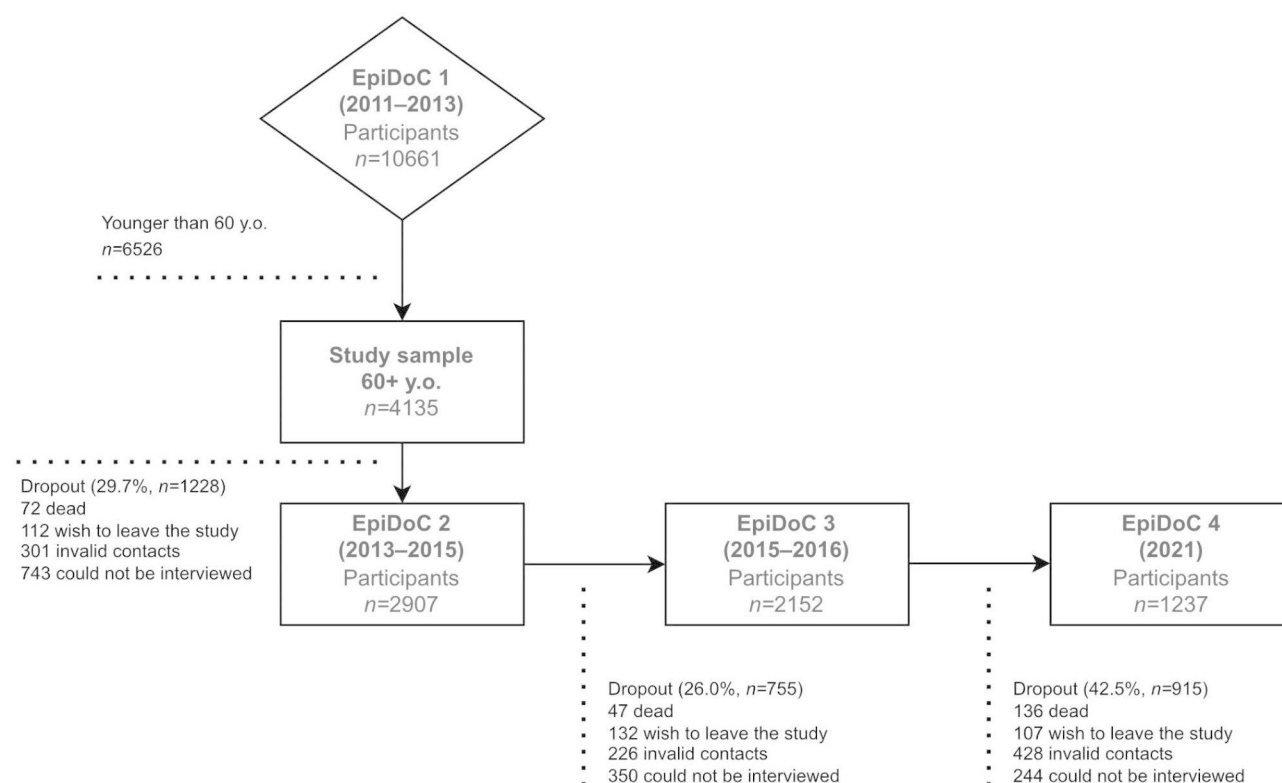


Fig. 1 EpiDoC cohort's profile for participants 60 years or older at baseline

Health and lifestyle variables

Self-reported chronic non-communicable diseases at baseline (wave 1), and at wave 3 and wave 4 were assessed through the question: “Has a doctor ever told you that you suffer from the following chronic diseases?”. At wave 2 it was assessed through the report of new diagnosis since the previous contact. Variables were cleaned and harmonized across waves, and multimorbidity was defined as self-reporting two or more diseases from the following list of chronic non-communicable diseases: high blood pressure, high cholesterol, cardiac disease, diabetes mellitus, chronic lung disease, problems in the digestive tract, neurological disease, mental disease, cancer, and hyperuricemia.

Regular exercise was assessed in all waves through the question “Do you practice regular exercise/sports (yes, no, doesn't know/doesn't answer)” and the frequency of exercise per week considered as the number of days of regular exercise per week. Regular exercise was then recategorized into three strata: no regular exercise, frequent (1 or 2 times per week) or very frequent (at least 3 times per week). Frequencies of exercise reported as occasionally or rarely were excluded.

Self-reported weight and height were used to calculate body mass index (BMI) (weight in kg/height in m²) which was categorized as underweight (<18.5 kg/m²), Normal weight (18.5–24.99 kg/m²), overweight (25–29.99 kg/m²)

and obese (≥30 kg/m²). Other lifestyle variables included smoking habits (“never”, “in the past”, “active smokers”) and alcohol drinking as “no” and “yes” (recoded from occasional or daily alcohol consumption).

Sociodemographic variables

Sociodemographic variables were collected at baseline: sex, age, NUTS II region (Lisbon, North, Centre, Algarve, Alentejo, Madeira and Azores), marital status, and education level. Marital status was categorized as “single”, “married or partnership”, “divorced” and “widow”. Education level was categorized as: “<4 years” (unfinished 1st cycle/primary education), “4–9 years” (finished primary education/1st cycle or 2nd or 3rd cycle), “10–12 years” (secondary education) and “>12 years” (university education).

Statistical analysis

Baseline participant characteristics are shown as frequency (percentage) for categorical variables and mean (standard deviation) for continuous variables. Participants were described by baseline age group (Table 1) and by sex (e-Table 1). All variables were cleaned and harmonized prior to restructuring for longitudinal analysis.

Ageing trajectories for continuous outcomes (disability index, HRQoL) were estimated with linear mixed models, considering age as a fixed effect and individuals as

Table 1 Baseline sociodemographic and lifestyle characteristics of older adults from the EpiDoC cohort by age group

	All n = 4135	60-64y n = 966	65-69y n = 943	70-74y n = 819	75-79y n = 737	80-84y n = 437	85+y n = 233
Sociodemographic							
Sex							
Men	1510 (36.5%)	372 (38.5%)	359 (38.1%)	300 (36.6%)	260 (35.3%)	140 (32.0%)	79 (33.9%)
Women	2625 (63.5%)	594 (61.5%)	584 (61.9%)	519 (63.4%)	477 (64.7%)	297 (68.0%)	154 (66.1%)
Age (years)							
Mean (SD)	71.7 (7.8)	62.4 (1.5)	67.4 (1.5)	72.3 (1.4)	77.4 (1.4)	82.1 (1.5)	88.7 (3.7)
Region (NUTS II)							
North	1168 (28.2%)	286 (29.6%)	283 (30.0%)	227 (27.7%)	206 (28.0%)	112 (25.6%)	54 (23.2%)
Centre	898 (21.7%)	201 (20.8%)	166 (17.6%)	192 (23.4%)	182 (24.7%)	102 (23.3%)	55 (23.6%)
Lisbon	869 (21.0%)	202 (20.9%)	216 (22.9%)	168 (20.5%)	142 (19.3%)	93 (21.3%)	48 (20.6%)
Alentejo	319 (7.7%)	64 (6.5%)	72 (7.6%)	53 (6.5%)	70 (9.5%)	35 (8.0%)	26 (11.2%)
Algarve	165 (4.0%)	32 (3.3%)	31 (3.3%)	39 (4.8%)	31 (4.2%)	21 (4.8%)	11 (4.7%)
Azores	328 (7.9%)	83 (8.6%)	91 (9.7%)	51 (6.2%)	52 (7.1%)	31 (7.1%)	20 (8.6%)
Madeira	388 (9.4%)	99 (10.2%)	84 (8.9%)	89 (10.9%)	54 (7.3%)	43 (9.8%)	19 (8.2%)
Marital status							
Single	190 (4.6%)	57 (5.9%)	48 (5.1%)	30 (3.7%)	16 (2.2%)	25 (5.7%)	14 (6.0%)
Married/Partnership	2491 (60.3%)	686 (71.1%)	620 (65.9%)	539 (65.8%)	396 (53.7%)	178 (40.7%)	72 (30.9%)
Divorced	211 (5.1%)	89 (9.2%)	65 (6.9%)	18 (2.2%)	21 (2.8%)	13 (3.0%)	5 (2.1%)
Widowed	1240 (30.0%)	133 (13.8%)	208 (22.1%)	232 (28.3%)	304 (41.2%)	221 (50.6%)	142 (60.9%)
Education level							
< 4 years	1201 (29.2%)	83 (8.6%)	198 (21.2%)	252 (31.0%)	330 (44.9%)	206 (47.7%)	132 (56.9%)
4–9 years	2460 (59.8%)	719 (74.5%)	628 (66.9%)	485 (59.7%)	354 (48.2%)	197 (45.6%)	77 (33.2%)
10–12 years	229 (5.6%)	92 (9.5%)	49 (5.2%)	41 (5.0%)	25 (3.4%)	11 (2.5%)	11 (4.7%)
> 12 years	226 (5.5%)	71 (7.4%)	64 (6.8%)	35 (4.3%)	26 (3.5%)	18 (4.2%)	12 (5.2%)
Lifestyle							
Body mass index (kg/m²)							
Mean (SD)	27.6 (4.6)	27.9 (4.9)	28.1 (4.7)	27.7 (4.5)	27.3 (4.1)	26.7 (4.3)	25.4 (4.1)
Underweight (< 18.5)	38 (1.0%)	13 (1.4%)	4 (0.4%)	8 (1.1%)	2 (0.3%)	7 (1.9%)	4 (2.4%)
Normal weight (18.5–24.9)	1114 (29.8%)	247 (26.8%)	236 (26.2%)	218 (29.3%)	190 (29.5%)	139 (38.5%)	84 (50.6%)
Overweight (25–29.9)	1589 (42.5%)	395 (42.9%)	397 (44.1%)	313 (42.1%)	296 (46.0%)	132 (36.6%)	56 (33.7%)
Obese (≥ 30)	994 (26.6%)	265 (28.8%)	263 (29.2%)	205 (27.6%)	156 (24.2%)	83 (23.0%)	22 (13.3%)
Smoking habits							
Never	2980 (72.2%)	610 (63.2%)	667 (70.7%)	604 (73.8%)	571 (77.5%)	339 (77.9%)	189 (81.5%)
In the past	878 (21.3%)	229 (23.7%)	208 (22.1%)	175 (21.4%)	142 (19.3%)	86 (19.8%)	38 (16.4%)
Active smokers	272 (6.6%)	126 (13.1%)	68 (7.2%)	39 (4.8%)	24 (3.3%)	10 (2.3%)	5 (2.2%)
Alcohol drinking							
No	2803 (50.4%)	431 (44.7%)	438 (46.4%)	409 (49.9%)	407 (55.2%)	253 (58.2%)	145 (62.8%)
Yes	2046 (49.6%)	533 (55.3%)	505 (53.6%)	410 (50.1%)	330 (44.8%)	182 (41.8%)	86 (37.2%)

All values are n (%) unless otherwise mentioned. Sample size is not constant due to missing values in some variables: All – Marital status (n = 4132), Education level (n = 3735), Body mass index (n = 3735), Smoking habits (n = 4130), Alcohol drinking (n = 4129); 60-64y – Marital status (n = 965), Education level (n = 965), Body mass index (n = 920), Smoking habits (n = 965), Alcohol drinking (n = 964); 65-69y – Marital status (n = 941), Education level (n = 943), Body mass index (n = 900); 70-74y – Education level (n = 813), Body mass index (n = 744), Smoking habits (n = 818); 75-79y – Education level (n = 735), Body mass index (n = 644); 80-84y – Education level (n = 432), Body mass index (n = 361), Smoking habits (n = 435), Alcohol drinking (n = 435); 85+y – Education level (n = 232), Body mass index (n = 166), Smoking habits (n = 232), Alcohol drinking (n = 231); NUTS II, Nomenclature of territorial units for statistics II; SD, standard deviation

the random intercept. These linear trajectories were then plotted by baseline age group (60-64y, 65-69y, 70-74y, 75-79y, 80-84y, 85+y) and sex. For physical function domains, the proportion of people with at least some

difficulty was represented across age. The associated factors to HRQoL were assessed considering a single linear model for participants 60+ years-old following a selection in two steps. Univariate models were computed first to

test the significance of potential predictors, with $p < 0.25$ as the selection criterion. Significant variables were then subsequently added and kept in the multivariate model if they achieved statistical significance of $p < 0.05$. Models were compared through likelihood ratio tests until the fully adjusted model was reached. The disability index showed non-normality of residuals when a linear model was applied. Therefore, associated factors were estimated through a left-censored tobit regression model with a specified random intercept. Body mass index's underweight and normal weight categories were combined in the models due to sample size constraints.

All analysis and plots were computed using R Software version 4.1.1 [7], linear mixed models were computed using the *lmer* function from the *lme4* package [8] and the tobit model computed using the *censReg* package [9].

Results

The analytic sample consisted of 4135 participants with a mean age of 71.7 ± 7.8 years (Fig. 1). The majority of participants were women (63.5%), lived in the North (28.2%) and were married or were in a partnership (60.3%). Most participants had 4 to 9 years of full-time education (59.8%) and most participants had a BMI between 25 and 29.9 kg/m^2 (42.5%). More than two-thirds never smoked (76.7%) and close to half reported alcohol intake (either daily or occasionally) (49.6%) – Table 1, e-Table 1. Participants were followed for a mean period of 3.6 ± 3.4 years with a maximum of 9.8 years.

Physical function (disability index and domains)

At baseline, 24.8% of older Portuguese adults reported a lot of difficulty or were unable to perform activities in the same domains (dressing, arising, eating, and bathing or showering). On average, physical disability of Portuguese older adults increased with age (Fig. 2a), resulting in an increase in 0.26 (0.24, 0.29) points over 10 years (e-Table 2). For example, at baseline on average, those aged 60–64 had a disability index of 0.40 ± 0.58 while those aged 70–74 had an index of 0.66 ± 0.70 . Older men and women also had a faster increase of disability. For example, those aged 60–64 reported an increase of 0.014 points per year in the disability index, those aged 70–74 a 0.033-point increase per year, and those 80–84 a 0.059 point increase per year (e-Table 2). This would correspond to an increase of 0.14, 0.33 and 0.56 over 10 years, respectively. Combining age groups 80–84y and 85+y into an 80+y group shows a statistically significant increase in disability with each year by 0.0455 points (e-Table 2).

Overall, women had higher disability than men at baseline, but the rate of increase was similar between sexes (Fig. 2a, e-Table 2). For example, women aged 65–69 had, on average, a disability index of 0.62 ± 0.66 at baseline

and were expected to increase to 0.76 by the time they were 75–79y. Men of the same age had, on average, a disability index of 0.29 ± 0.52 at baseline and were expected to increase to 0.52 over 10 years.

Similarly, grouping the disability index into domains showed that the proportion of men and women who had at least some difficulty in one of the activities of daily living (dressing, arising, eating, walking, hygiene, reach, grip and activities) increased with age, albeit with some fluctuations), e.g., 12%, 31%, 51% of men and 30%, 47%, 66% of women at 60, 70 and 80 years old, respectively, had at least one difficulty in the walking domain. In particular, reach and common activities (e.g., run errands and shop) were the domains where most people reported difficulties in, e.g., 24% and 52% of men and women aged 60y, respectively, and 58% of men and 67% of women aged 90+, respectively, reported having at least one difficulty reaching. Grip and eating domains seemed to be better conserved, ranging from only 3% in younger to 37% in older men, and 23% in younger to 54% in older women (Fig. 2b). Overall, there were more women than men with at least some difficulty in any domain at most ages, but women had difficulties in similar domains as men. However, there were slight differences, such as that for women, dressing does not appear to be as difficult as walking or arising while for men these domains show similar degrees of difficulty.

Being older, being a woman, having multimorbidity, and being overweight or obese was associated with a higher score in the disability index or lower physical function. Higher education, exercising frequently, and being an alcohol drinker (any quantity vs. non-drinkers) were associated with a lower score in the disability index or higher physical function (Table 2).

Health-related quality of life

On average, the HRQoL of Portuguese older adults declined by 0.074 (–0.084, –0.063), over 10 years. There was a general decrease in the mean HRQoL of older adults across age (Fig. 3, e-Table 2). For example, baseline 60–64 year-olds had an average HRQoL score of 0.76 ± 0.25 , decreasing to 0.69 ± 0.29 for 70–74y and 0.60 ± 0.31 at 80–85y. This decrease was generally higher the older the baseline age group, e.g., 65–69 year-olds had a decrease of HRQoL of 0.004 points each year, 70–74 year-olds decreased by 0.005 points each year, 75–79 year-olds decreased by 0.010 points, and 80–84 year-olds decreased by 0.012 points each year (Fig. 3, e-Table 2). This is the equivalent of 0.04, 0.05, 0.10 and 0.12 points over the course of 10 years, respectively. When participants from age groups 80–84y and 85+y are combined into an 80+y group, we see that their HRQoL significantly decreases with age by 0.0135 points each year (e-Table 2).

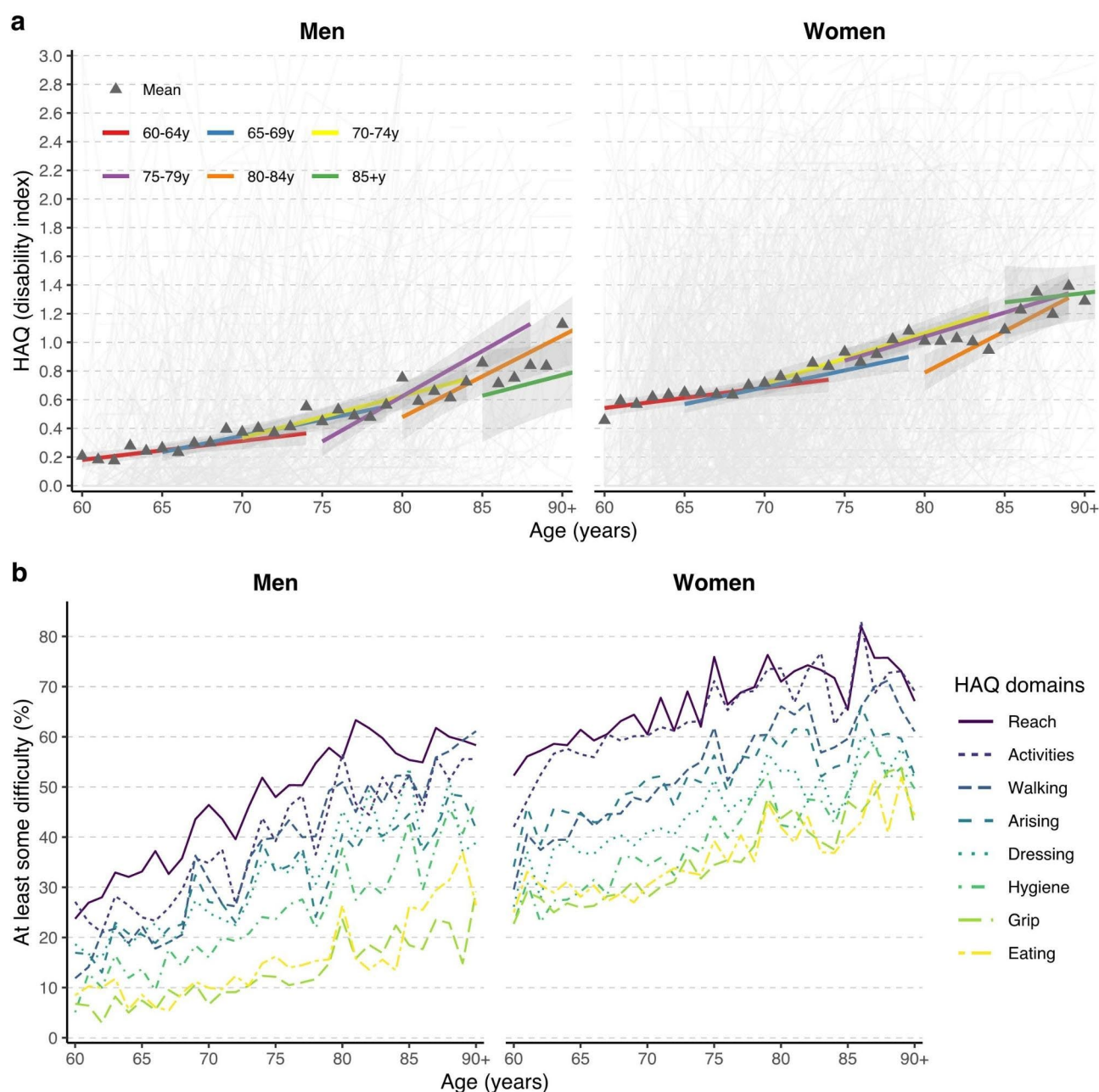


Fig. 2 Trajectories of disability for the disability index **(a)** of the health assessment questionnaire (HAQ) in older adults by baseline age group over 10 years. Triangles are the means for each age and are not the individual points used for plotting the trajectories. HAQ, health assessment questionnaire. Models sample size: Men – 60–64 ($n=865$), 65–69 ($n=817$), 70–74 ($n=668$), 75–79 ($n=566$), 80–84 ($n=275$), 85+ ($n=112$); Women – 60–64 ($n=339$), 65–69 ($n=324$), 70–74 ($n=259$), 75–79 ($n=210$), 80–84 ($n=93$), 85+ ($n=40$). Trajectories of the percentage of people with at least some difficulty in disability domains **(b)** of the health assessment questionnaire by years of age over 10 years

On average, women tended to have lower HRQoL than men for all age groups but with an overall slower decrease across most age groups (Fig. 3, e-Table 2). For example, men aged 65–69 years declined by 0.007 points per year while women of the same age declined 0.002 points per year. The highest decrease found was for men in the 80–84y range, worsening their HRQoL 0.17 points over 10 years.

Similarly, to physical function, being older, being a woman, having multimorbidity, and being obese were associated with lower HRQoL. Higher education, frequent exercise and being an alcohol drinker (any quantity vs. non-drinkers) were associated with higher HRQoL (Table 3).

Table 2 Estimates and 95% confidence intervals (95% CIs) of the factors associated with physical function (HAQ disability index)

	β	95% CI
Age (years)	0.031	(0.027, 0.035)
Sex		
Men	ref.	ref.
Women	0.461	(0.398, 0.523)
Education (years)	-0.038	(-0.047, -0.029)
Exercise		
Non-frequent	ref.	ref.
Frequent	-0.077	(-0.155, 0.000)
Very frequent	-0.165	(-0.216, -0.114)
Alcohol drinking		
No	ref.	ref.
Yes	-0.083	(-0.126, -0.041)
Multimorbidity (yes)	0.446	(0.384, 0.507)
Body mass index (kg/m ²)		
Underweight/Normal weight (< 25)	ref.	ref.
Overweight (25–29.9)	0.081	(0.025, 0.137)
Obese (≥ 30)	0.232	(0.162, 0.301)

HAQ: health assessment questionnaire; β : coefficient estimates; ref: reference class; multivariate model adjusted for age, sex, education, exercise, alcohol, multimorbidity and body mass index; model sample size ($n = 2840$)

Discussion

To the best of our knowledge, this is the first study to offer a broad picture of the ageing trajectories of older

Table 3 Estimates and 95% confidence intervals (95% CIs) of the factors associated with health-related quality of life

	β	95% CI
Age (years)	-0.007	(-0.008, -0.006)
Sex		
Men	ref.	ref.
Women	-0.097	(-0.1170, -0.078)
Education (years)	0.012	(0.0092, 0.015)
Exercise		
Non-frequent	ref.	ref.
Frequent	0.054	(0.027, 0.082)
Very frequent	0.071	(0.052, 0.090)
Alcohol drinking		
No	ref.	ref.
Yes	0.039	(0.024, 0.054)
Multimorbidity (yes)	-0.131	(-0.151, -0.110)
Body mass index (kg/m ²)		
Underweight/Normal weight (< 25)	ref.	ref.
Overweight (25–29.9)	-0.007	(-0.026, 0.012)
Obese (≥ 30)	-0.048	(-0.071, -0.025)

β : coefficient estimates; ref: reference class; multivariate model adjusted for age, sex, education, exercise, alcohol, multimorbidity and body mass index; model sample size ($n = 2467$)

adults in Portugal over 10 years. The study examined the progression of HRQoL and physical function of more than 4100 adults aged 60+ over the course of 10 years (mean follow-up 3.6 ± 3.4 years). With advancing age, older adults reported reduced HRQoL and increased

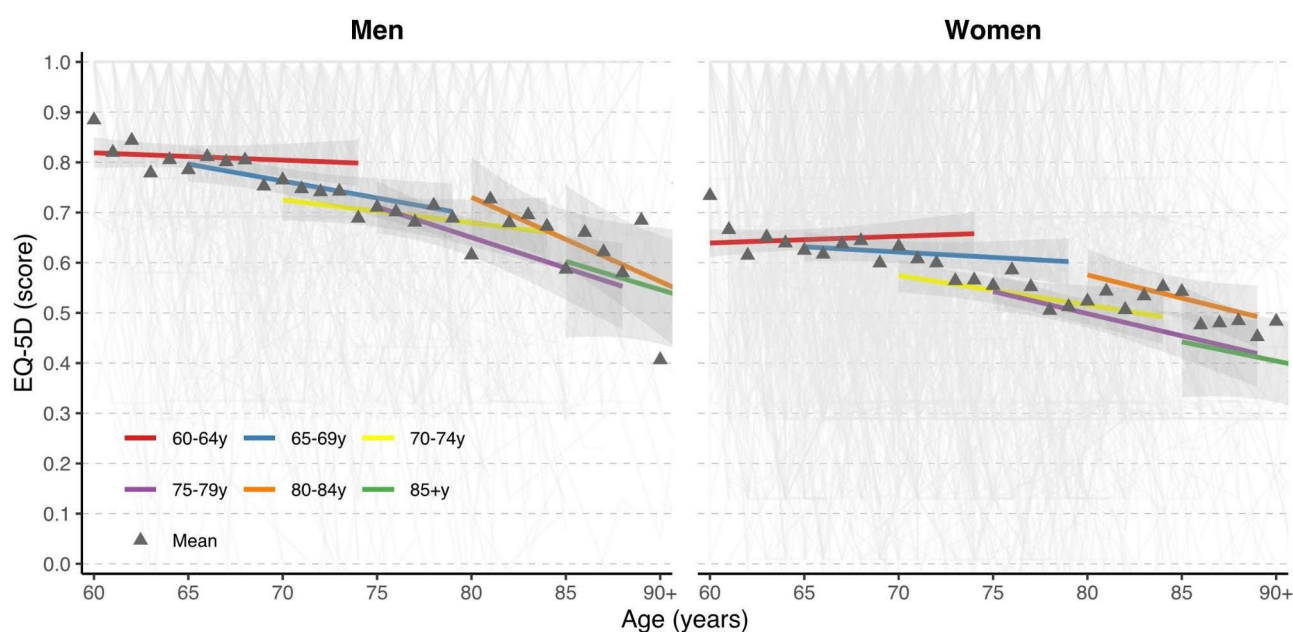


Fig. 3 Trajectories of health-related quality of life (EQ-5D score) in older adults by baseline age group over 10 years. Triangles are the means for each age and are not the individual points used for plotting the trajectories. EQ-5D, EuroQol 5-dimensions. Models sample size: Men – 60–64 ($n = 280$), 65–69 ($n = 251$), 70–74 ($n = 213$), 75–79 ($n = 166$), 80–84 ($n = 73$), 85+ ($n = 28$); Women – 60–64 ($n = 471$), 65–69 ($n = 454$), 70–74 ($n = 371$), 75–79 ($n = 325$), 80–84 ($n = 159$), 85+ ($n = 60$)

physical disability. Moreover, decline in health tended to be faster for older age groups. Women were, in general, in worse health at baseline than men but the rate of change was similar. Regarding associated factors, results suggest that higher education and practicing regular exercise may be protective for physical function and HRQoL while having multimorbidity and excess weight seem to be detrimental.

Decline in health was faster for older age groups up until 80–84y. We believe these are the effects of having a smaller sample size in the age group 85+y, since when looking at the combined 80+y group, we see a faster decline in HRQoL from the 75–79y group.

In our study, women had a higher disability index and more had multimorbidity than men at baseline but the rate of change was similar between sexes, which is in line with most ageing studies [10, 11]. These findings are probably partly due to survival bias as men who have been selected and were able to participate in the study were in better health than women who have, on average, higher life expectancies. Studies with middle-aged adults do not report a similar gender paradox and have found that morbidity is not consistently higher in women than in men [12]. Furthermore, increased physical disability with age is closely related with reduced HRQoL [13]. These results are in line with data from Ireland, Scotland and the Study on global AGEing and adult health, where HRQoL decreased with age in older adults, markedly more so in women [14–16]. This decrease in HRQoL in later years was associated with lower education, higher food insecurity, loneliness, poverty, and mental health [14, 15, 17].

We found that reach and common activities (e.g., running errands, shopping, cleaning the house) were the domains where participants had, overall, the most difficulty with and, grip and eating were the domains where the least difficulty was observed. Similarly, a study with a population from Newcastle and North Tyneside found that very old adults (85 years and older) had more difficulty shopping, using steps, walking and washing all over, and less difficulty eating, transferring from bed and dressing, with women also having a higher prevalence of difficulty in all items relative to men [18]. Previous longitudinal studies have also reported an increase in the difficulty performing activities of daily living with older age, particularly an increased difficulty in eating, in walking, bathing and transferring [19–21]. Across all EU member states (2013–15) 8.4% of older adults reported having a lot of difficulty performing at least one of five activities of daily living (eating and drinking, getting in or out of a bed or chair, dressing and undressing, using the toilet, and bathing or showering) with Portugal being slightly above the European average [22]. In this study, 24.8% of older Portuguese adults reported a lot of difficulty or were

unable to perform activities in the same domains (dressing, arising, eating, and bathing or showering).

Being an alcohol drinker vs. not drinking showed an apparent beneficial effect on physical function and HRQoL of older adults. This effect is predominant in our cohort across a variety of subpopulations, even in younger ages [23, 24]. The most likely explanation is that alcohol drinking's (vs. non-drinkers) positive effects are largely due to reverse causation and the "sick quitter" hypothesis, which states that a considerable proportion of those that do not drink quit drinking in the past for health reasons [25]. Another much less likely explanation is that although excessive alcohol consumption is associated with worse HRQoL and physical function [26], higher rates of moderate alcohol consumption may also be associated with higher socioeconomic status [27], which in turn is a determinant of HRQoL and physical function.

An increase in multimorbidity comes with a huge cost for the HRQoL of older adults, and for healthcare systems worldwide [28]. Previously, we showed that Portuguese older adults had a high prevalence of multimorbidity (78%), which increased across age strata, and unhealthy lifestyles [3]. In the present study, physical disability increased with age and the rate of change was, generally, faster in those who were older, which is also when the prevalence of multimorbidity is the highest. Apart from the ageing process and its consequences, Portuguese older adults have poor socioeconomic conditions and unhealthier lifestyles which make them an especially vulnerable group to multimorbidity [3]. Low education level and obesity have been linked with multimorbidity. In our sample, a third of older adults had only four or fewer years of education with the majority having 5–9 years, and over 60% were overweight or obese [29].

Physical activity, including regular exercise practice, is extensively reported to have health benefits. Importantly, it is associated with lower risk for all-cause mortality, cardiovascular diseases and cancer [30–32], as well as improved HRQoL [33]. With age, particularly after 60 the proportion of people that perform regular exercise tends to decrease [34]. Furthermore, despite the COVID-19 pandemic lockdowns from March to August 2021, which affected the usual exercise routines of people who were physically active before, and also the fact that participants were much older at the end of the study, there was an overall beneficial effect of exercise over the 10 years of follow-up.

These estimations may help the Portuguese government and other decision-makers to effectively plan budget and human resource allocation to long term care and healthcare, targeting those that need it the most, as well as ensuring availability of carers and supporting informal carers.

Strengths and limitations

This study has important limitations and strengths that should be taken into consideration when interpreting the results. As all data were self-reported, the probability of recall bias was high. However, for outcomes such as HRQoL, participants were asked about the current health status and were, therefore, less prone to recall bias. Over 60% of the Portuguese population have a low level of health literacy which may have resulted in misclassification of the self-reported number of chronic diseases diagnosed [35]. There were slight differences between questionnaires in each wave that had to be harmonized, e.g., previous (any period) diagnosis of chronic diseases was asked at baseline and wave 4, but for waves 2 and 3 it was asked as diagnosis since the previous contact. Similarly, a more informative definition of regular exercise frequency could not be derived.

It is important to note that the estimations for the prevalence and rate of progression of HRQoL and physical function are, in all likelihood, small to moderate underestimations since there was a 30, 26 and 43% of dropout between EpiDoC 1 and 2, EpiDoC 2 and 3, and EpiDoC 3 and 4, respectively. A more detailed collection of the dropout reasons would be important to further quantify the follow-up bias. For example, mortality is essential to accurately determine the trajectories of older adults and the causes of dropout. However, because mortality was only ascertained through successful contacts with a family member/acquaintance and no linkage with the national mortality database was possible, the number (and timing) of deaths was severely underestimated and not included in the analysis. Stratification of results by sex and age group limited sample size, especially in the 85+y where sample size was below 100 individuals. However, results in an 80+y group provided robust estimates in line with the expected aggravating effects of age. We also note that due to limited sample size, analysis was not stratified by NUTS II region, and only a general description was presented.

A considerable strength is that the EpiDoC cohort was representative of the adult Portuguese population with over 4100 older adults who were followed up to 10 years. Moreover, all questionnaires were validated for the Portuguese population which better captures the health perceptions.

Conclusions

Using data from a large population-based prospective cohort study we were able to estimate the health trajectories of Portuguese older adults over 10 years and evaluate associated factors with physical function and HRQoL. With advancing age, older adults reported increased physical disability and reduced health-related quality of life. Higher education and regular exercise seemed to be protective for physical function and HRQoL, while multimorbidity and excess weight were associated with poor physical function

and HRQoL over time. These findings are essential to effectively plan resource allocation, plan better healthcare and design informed public health policies focusing on health promotion and bridging the gap between life expectancy and healthy life expectancy in Portugal.

Supplementary Information

The online version contains supplementary material available at <https://doi.org/10.1186/s12889-023-16370-8>.

Supplementary Material 1

Acknowledgements

Not applicable.

Authors' contributions

AR and NM conceived the study. DL and NM wrote the manuscript. DL and NM cleaned the data and were responsible for the data management. DL and NM designed, and DL performed the statistical analyses. AR, DL, AH, HC and JB collected the data. All authors contributed to the interpretation of the findings, read, critically reviewed the paper, commented, and approved the final manuscript. DL, NM and AR have primary responsibility for the final content.

Funding

The present study was funded by Fundação para a Ciência e Tecnologia, IP national support through CHRC (UIDP/04923/2020).

Data Availability

The codebook and analytic code are available pending request from the authors while the dataset is available pending application and approval by the EpiDoC Coordinator - Ana Rodrigues (ana.m.rodrigues@nms.unl.pt).

Declarations

Ethics approval and consent to participate

The studies involving human participants were reviewed and approved by the Ethics Committee of NOVA Medical School and Portuguese Data Protection Authority (Comissão Nacional de Proteção de Dados). The patients/participants provided their written informed consent to participate in this study. All methods were carried out in accordance with relevant guidelines and regulations.

Consent for publication

Not applicable.

Competing interests

All authors declare no competing interests.

Author details

¹EpiDoC Unit, NOVA Medical School, CHRC, Universidade NOVA de Lisboa, Rua do Instituto Bacteriológico, nº5, Lisboa 1150-082, Portugal

²Centro Hospitalar Lisboa Ocidental (CHLO-E.PE.), Serviço de Reumatologia do Hospital Egas Moniz, Lisboa, Portugal

³Rheumatology Unit, Hospital dos Lusíadas, Lisboa, Portugal

Received: 15 March 2023 / Accepted: 24 July 2023

Published online: 17 August 2023

References

1. Eurostat. Population structure indicators at national level. 2023 [cited 2023 Jul 11]. Proportion of population aged 60 years and more. Available from: https://ec.europa.eu/eurostat/databrowser/view/DEMO_PJANIND_custom_6853095/default/table?lang=en.
2. World Health Organization. Life expectancy and Healthy life expectancy Data by country. World Health Organization; 2023 [cited 2023 Jul 11]. Global

- Health Observatory data repository. Available from: <https://apps.who.int/gho/data/view.main.SDG2016LEXv>.
3. Rodrigues AM, Gregório MJ, Sousa RD, Dias SS, Santos MJ, Mendes JM et al. Challenges of Ageing in Portugal: Data from the EpiDoC Cohort. *Acta Médica Port*. 2018 [cited 2022 Jun 27]; 31(2):80–93. Available from: <https://www.actamedicaportuguesa.com/revista/index.php/amp/article/view/9817>.
 4. Dias SS, Rodrigues AM, Gregório MJ, de Sousa RD, Branco JC, Canhão H. Cohort Profile: The Epidemiology of Chronic Diseases Cohort (EpiDoC). *Int J Epidemiol*. 2018 [cited 2021 Sep 29]; 47(6):1741–1742j. Available from: <https://doi.org/10.1093/ije/dyy185>.
 5. Santos RA, Reis P, Rebelo L, Dias FC, Rosa CM, Queiroz MV, de. "Health assessment questionnaire" (versão curta): adaptação para língua Portuguesa e estudo da sua aplicabilidade. *Acta Reumatológica Portuguesa. Acta Reuma Port* 19967615-20. 1996. Available from: http://www.actareumatologica.pt/repositorio/pdf/1996_Vol%20XXI_n%2076_Jan-Mar.pdf.
 6. Ferreira LN, Ferreira PL, Pereira LN, Oppe M. The valuation of the EQ-5D in Portugal. *Qual Life Res*. 2014 [cited 2022 Jun 27]; 23(2):413–23. Available from: <https://doi.org/10.1007/s11136-013-0448-z>.
 7. R Core Team. (2021). R: A language and environment for statistical computing. R Foundation for Statistical Computing, Vienna, Austria. Available from: <https://www.R-project.org/>.
 8. Bates D, Mächler M, Bolker B, Walker S. Fitting Linear Mixed-Effects Models Using lme4. *J Stat Softw*. 2015 [cited 2022 Jun 27]; 67:1–48. Available from: <https://doi.org/10.18637/jss.v067.i01>.
 9. Henningsen A. Estimating censored regression models in R using the censReg Package. *R Package Vignettes Collect*. 2010;5(12).
 10. Alimohammadian M, Majidi A, Yaseri M, Ahmadi B, Islami F, Derakhshan M et al. Multimorbidity as an important issue among women: results of a gender difference investigation in a large population-based cross-sectional study in West Asia. *BMJ Open*. 2017 [cited 2022 Jun 27]; 7(5):e013548. Available from: <https://bmjopen.bmj.com/content/7/5/e013548>.
 11. Murtagh KN, Hubert HB. Gender differences in physical disability among an elderly cohort. *Am J Public Health*. 2004;94(8):1406–11.
 12. Singh-Manoux A, Guéguen A, Ferrie J, Shipley M, Martikainen P, Bonenfant S et al. Gender Differences in the Association Between Morbidity and Mortality Among Middle-Aged Men and Women. *Am J Public Health*. 2008 [cited 2022 Jul 4]; 98(12):2251–7. Available from: <https://www.ncbi.nlm.nih.gov/pmc/articles/PMC2636514/>.
 13. Rajati F, Ashtarian H, Salari N, Ghanbari M, Naghibifar Z, Hosseini SY. Quality of life predictors in physically disabled people. *J Educ Health Promot*. 2018 [cited 2023 Feb 28]; 7:61. Available from: <https://www.ncbi.nlm.nih.gov/pmc/articles/PMC5963207/>.
 14. Layte R, Sexton E, Savva G. Quality of Life in Older Age: Evidence from an Irish Cohort Study. *J Am Geriatr Soc*. 2013 [cited 2022 Jul 5]; 61(s2):S299–305. Available from: <https://onlinelibrary.wiley.com/doi/abs/https://doi.org/10.1111/jgs.12198>.
 15. Brett C, Dykier D, Starr J, Deary I. Predicting change in quality of life from age 79 to 90 in the Lothian Birth Cohort 1921. *Qual Life Res*. 2019;28.
 16. Lee KH, Xu H, Wu B. Gender differences in quality of life among community-dwelling older adults in low- and middle-income countries: results from the Study on global AGEing and adult health (SAGE). *BMC Public Health*. 2020 [cited 2022 Jul 5]; 20(1):114. Available from: <https://doi.org/10.1186/s12889-020-8212-0>.
 17. Baptista FM, Rodrigues AM, Gregório MJ, de Sousa R, Cruz E, Canhão H. Functional Status and Quality of Life Determinants of a Group of Elderly People With Food Insecurity. *Front Nutr*. 2018 [cited 2023 Jan 16]; 5. Available from: <https://www.frontiersin.org/articles/https://doi.org/10.3389/fnut.2018.00099>.
 18. Kingston A, Collerton J, Davies K, Bond J, Robinson L, Jagger C. Losing the Ability in Activities of Daily Living in the Oldest Old: A Hierarchic Disability Scale from the Newcastle 85+ Study. *PLOS ONE*. 2012 Feb 15 [cited 2022 Jul 4]; 7(2):e31665. Available from: <https://journals.plos.org/plosone/article?id=10.1371/journal.pone.0031665>.
 19. Dunlop DD, Hughes SL, Manheim LM. Disability in activities of daily living: patterns of change and a hierarchy of disability. *Am J Public Health*. 1997 [cited 2022 Jul 4]; 87(3):378–83. Available from: <https://www.ncbi.nlm.nih.gov/pmc/articles/PMC1381008/>.
 20. Jagger C, Arthur AJ, Spiers NA, Clarke M. Patterns of onset of disability in activities of daily living with age. *J Am Geriatr Soc*. 2001;49(4):404–9.
 21. Nguyen TV, Dang HT, Burns MJ, Dao HH, Nguyen TN. Impairment in activities of daily living and readmission in older patients with heart failure: a cohort study. *BMJ Open*. 2021 [cited 2022 Jul 5]; 11(2):e044416. Available from: <https://bmjopen.bmj.com/content/11/2/e044416>.
 22. Koch-Institut R. Limitations in activities of daily living in old age in Germany and the EU – Results from the European Health Interview Survey (EHIS) 2. 2019 [cited 2022 Jul 5]; Available from: <https://edoc.rki.de/handle/176904/6247.2>.
 23. Branco JC, Rodrigues AM, Gouveia N, Eusébio M, Ramiro S, Machado PM et al. Prevalence of rheumatic and musculoskeletal diseases and their impact on health-related quality of life, physical function and mental health in Portugal: results from EpiReumaPt– a national health survey. *RMD Open*. 2016 [cited 2022 Jul 6]; 2(1):e000166. Available from: <https://rmdopen.bmj.com/lookup/doi/https://doi.org/10.1136/rmdopen-2015-000166>.
 24. Santos H, Henriques AR, Branco J, Machado PM, Canhão H, Pimentel-Santos FM et al. Health-related quality of life among spondyloarthritis and chronic low back pain patients: results from a nationwide population-based survey. *Qual Life Res*. 2023 [cited 2023 Feb 23]; 32(2):383–99. Available from: <https://doi.org/10.1007/s11136-022-03274-0>.
 25. Sallis HM, Palmer T, Tilling K, Davey Smith G, Munafò MR. Using allele scores to identify confounding by reverse causation: studies of alcohol consumption as an exemplar. *Int J Epidemiol*. 2022 [cited 2023 Jan 16]; dyac165. Available from: <https://doi.org/10.1093/ije/dyac165>.
 26. Ugochukwu C, Bagot KS, Delaloye S, Pi S, Vien L, Garvey T et al. The Importance of Quality of Life in Patients with Alcohol Abuse and Dependence. *Harv Rev Psychiatry*. 2013 [cited 2022 Dec 29]; 21(1):1. Available from: https://journals.lww.com/hrpjournal/Fulltext/2013/01000/The_Importance_of_Quality_of_Life_in_Patients_with_1.aspx.
 27. Bonevski B, Regan T, Paul C, Baker AL, Bisquera A. Associations between alcohol, smoking, socioeconomic status and comorbidities: Evidence from the 45 and Up Study. *Drug Alcohol Rev*. 2014 [cited 2022 Dec 29]; 33(2):169–76. Available from: <https://onlinelibrary.wiley.com/doi/abs/https://doi.org/10.1111/dar.12104>.
 28. Lunenfeld B, Stratton P. The clinical consequences of an ageing world and preventive strategies. *Best Pract Res Clin Obstet Gynaecol*. 2013;27(5):643–59.
 29. Souza DLB, Oliveras-Fabregas A, Minobes-Molina E, de Camargo Canela M, Galbany-Estragués P, Jerez-Roig J. Trends of multimorbidity in 15 European countries: a population-based study in community-dwelling adults aged 50 and over. *BMC Public Health*. 2021 [cited 2022 Jul 4]; 21(1):76. Available from: <https://bmcpubhealth.biomedcentral.com/articles/https://doi.org/10.1186/s12889-020-10084-x>.
 30. Mok A, Khaw KT, Luben R, Wareham N, Brage S. Physical activity trajectories and mortality: population based cohort study. *BMJ*. 2019 [cited 2022 Jun 27]; 365:l2323. Available from: <https://www.bmj.com/content/365/bmj.l2323>.
 31. Physical Activity and Cardiovascular Health: NIH Consensus Development Panel on Physical Activity and Cardiovascular Health. *JAMA*. 1996 [cited 2022 Jun 27]; 276(3):241–6. Available from: <https://doi.org/10.1001/jama.1996.03540030075036>.
 32. Gonçalves AK, Florêncio GLD, Silva MJM, de Cobucci A, Giraldo RN, Cote PC. NM. Effects of Physical Activity on Breast Cancer Prevention: A Systematic Review. *J Phys Act Health*. 2014 [cited 2022 Jun 27]; 11(2):445–54. Available from: <https://journals.humankinetics.com/view/journals/jpah/11/2/article-p445.xml>.
 33. Chang HC, Liang J, Hsu HC, Lin SK, Chang TH, Liu SH. Regular exercise and the trajectory of health-related quality of life among Taiwanese adults: a cohort study analysis 2006–2014. *BMC Public Health*. 2019 [cited 2022 Jun 27]; 19(1):1352. Available from: <https://doi.org/10.1186/s12889-019-7662-8>.
 34. Regular exercise, anxiety, depression and personality: A population-based study - ScienceDirect. [cited 2022 Jun 27]. Available from: <https://www.sciencedirect.com/science/article/pii/S0091743505002331?via%3Dihub>.
 35. Literacia em saúde, dos dados à ação: tradução, validação e aplicação do European Health Literacy Survey em Portugal - ScienceDirect. [cited 2022 Jun 27]. Available from: <https://www.sciencedirect.com/science/article/pii/S0870902516300311?via%3Dihub>.

Publisher's Note

Springer Nature remains neutral with regard to jurisdictional claims in published maps and institutional affiliations.