

1-1-2022

The effect of ontogenetic diet shifts on sagittal otolith shape of European perch, *Perca fluviatilis* (Actinopterygii: Percidae) from Lake Ladik, Turkey

OĞUZ ÇÖL

SAVAŞ YILMAZ

Follow this and additional works at: <https://journals.tubitak.gov.tr/zoology>



Part of the [Zoology Commons](#)

Recommended Citation

ÇÖL, OĞUZ and YILMAZ, SAVAŞ (2022) "The effect of ontogenetic diet shifts on sagittal otolith shape of European perch, *Perca fluviatilis* (Actinopterygii: Percidae) from Lake Ladik, Turkey," *Turkish Journal of Zoology*. Vol. 46: No. 4, Article 6. <https://doi.org/10.55730/1300-0179.3090>
Available at: <https://journals.tubitak.gov.tr/zoology/vol46/iss4/6>

This Article is brought to you for free and open access by TÜBİTAK Academic Journals. It has been accepted for inclusion in Turkish Journal of Zoology by an authorized editor of TÜBİTAK Academic Journals. For more information, please contact academic.publications@tubitak.gov.tr.

The effect of ontogenetic diet shifts on sagittal otolith shape of European perch, *Perca fluviatilis* (Actinopterygii: Percidae) from Lake Ladik, Turkey

Oğuz ÇÖL^{ORCID}, Savaş YILMAZ^{ORCID}

Department of Biology, Faculty of Arts and Science, Ondokuz Mayıs University, Atakum, Samsun, Turkey

Received: 01.02.2022 • Accepted/Published Online: 21.05.2022 • Final Version: 06.07.2022

Abstract: European perch undergoes several ontogenetic dietary shifts during its lifetime. The present study focused on the variability in otolith shape caused by ontogenetic dietary changes in this species. A total of 172 specimens (7.5 to 27.5 cm TL) were caught by local fishermen in Lake Ladik from April to November 2019. Shape indices (SIs) and elliptic Fourier coefficients (EFCs) were calculated for each otolith. To detect ontogenetic changes in otolith shape, SIs and EFCs were compared among the three defined size classes (I, II, and III). Size-related groups were distinguished by both SIs and EFCs. Otolith shape analysis was more effective than morphometric analysis in distinguishing ontogenetic groups. Simultaneous use of both methods improved the classification success of each method alone. This study demonstrated that otolith shape of European perch is influenced by ontogenetic changes in diet. However, sexual maturity of the fish is also responsible for these variations in otolith shape.

Key words: *Perca fluviatilis*, otolith shape, morphometry, Fourier analysis, ontogenetic diet shift

1. Introduction

Otoliths are paired calcified structures in the skull of bony fishes that support hearing and balance. There are three pairs of otoliths called sagittae, lapilli, and asterisci (Quist et al., 2012). The shape and size of otoliths are primarily determined by genetic factors. However, there is also considerable variability caused by environmental conditions. Therefore, otoliths exhibit considerable intra and interspecific variations (Wright et al., 2002; Vignon and Morat, 2010). Due to the interspecific differences in otolith shape, these calcified structures have been used in fish taxonomy (Davoodi and Rahimian, 2016; Lin and Al-Abdulkader, 2019), in distinguishing populations or stocks (Vasconcelos et al., 2018; Wiff et al., 2020), in trophic ecology studies to determine the diet of piscivorous animals (Carvalho et al., 2019; Byrd et al., 2020), ecomorphological studies (Jaramillo et al., 2014; Assis et al., 2020), paleontological and paleo-ecological studies (Reichenbacher et al., 2007; Reichenbacher and Kowalke, 2009), age and growth analyses (Khan et al., 2019; Heral and Bayhan, 2020).

Although otoliths have a species-specific morphological structure, they may also exhibit intraspecific changes in shape and size due to the effects of internal (physiological) and external (environmental) factors (Mille et al., 2015). Otolith morphology can vary between populations (Morat

et al., 2012; Ozpicak et al., 2018) or stocks (Paul et al., 2013; Zhao et al., 2018) of the same species, and within a species depending on sex (Yılmaz et al., 2014; Başusta and Khan, 2021), diet (Gagliano and McCormick, 2004; Mille et al., 2016), and ontogeny (Campana, 2004). In addition, morphological differences (asymmetry) can be observed between the right and left otoliths of the same fish (Motamedi et al., 2021; Teimori et al., 2021). On the other hand, environmental factors such as water temperature (Hüssy, 2008; Mahé et al., 2019), depth (Tuset et al., 2003; Assis et al., 2020), substrate type (Volpedo and Fuchs, 2010; Jaramillo et al., 2014) and salinity (Capoccioni et al., 2011; Avigliano et al., 2014), as well as extreme habitat conditions (Schulz-Mirbach et al., 2011; Deng et al., 2011) can cause morphological variation in otoliths.

Ontogenetic allometry is a critical component in defining otolith shape (Monteiro et al., 2005; Xiong et al., 2015). Therefore, it is important to understand and describe the variability of otolith shape during ontogeny (Vignon, 2012). The literature reports that otolith morphology varies to some degree depending on the ontogenetic stage, which is determined by age (Ye et al., 2015; Villegas-Hernández et al., 2018), size (Gonzales Naya et al., 2012; Motamedi et al., 2021), year class (Bolles and Begg, 2000; Gonzales-Salas and Lenfant, 2007), sexual maturity status (Montanini et al., 2017; Cerna et al., 2019)

* Correspondence: savas.yilmaz@omu.edu.tr

or early life stages (larva to juvenile) (Yan et al., 2017; Coelho et al., 2019). In addition, Vignon (2012) found that otolith shape changed in a coral reef fish (*Lutjanus kasmira*) as it evolved from juveniles in the estuary to adults occupying either the channel or the outer reef off the coast of French Polynesia. Therefore, the researcher emphasized that otolith morphology is synergistically influenced by both ontogeny and environmental conditions. Similarly, Curcio et al. (2014) attributed differences in otolith shape between juvenile and adult *Lepidonotothen larseni* to different habitat preferences (pelagic and epibenthic) and ontogenetic shifts in feeding habits. In addition, Morat et al. (2012) demonstrated that ontogenetic shifts in feeding habits of red mullet populations in the northwestern Mediterranean affect otolith morphology.

The European perch (*Perca fluviatilis* L., 1758) is a carnivorous perch that is widely distributed throughout Eurasia but has also been successfully introduced into South Africa, Australia and New Zealand (Craig, 2000). Its size varies greatly depending on the water body in which it grows (Ceccuzzi et al., 2011). The diet of the European perch consists of zooplankton, benthic invertebrates and fish, and this species undergoes ontogenetic dietary changes (Persson et al., 1991, Yazıcıoğlu et al., 2016). Juveniles feed on pelagic zooplankton, then transition to

benthic resources with age, and finally prey on fish when they are large enough (Hjelm et al., 2000). Although it is known that otolith shape and morphometry can change with fish ontogeny (Campana, 2004), little information is available on changes in otolith morphology during ontogeny for *P. fluviatilis* (Souza et al., 2020). Moreover, there is no study on the detection of the otolith morphological and morphometric changes based on ontogenetic diet differences in this species. Therefore, the main objective of our work is to assess the effects of the size-related ontogenetic shifts in feeding habits on the sagittal otolith shape of the European perch from Lake Ladik, Turkey. This research is a valuable contribution to studies on the biology of the species and the trophic ecology of its potential predators.

2. Materials and methods

2.1. Study area and sample collection

Lake Ladik (35° 40'–36° 05' E and 40° 50'–41° 00' N) is located on the borders of Ladik district, south of Samsun province, northern Anatolia (Figure 1). It is 10 km away from Ladik district. This lake has a tectonic character in terms of formation, an area of 1000 ha and a maximum depth of 6 m (Yılmaz et al., 2015). It was classified as a eutrophic and shallow lake (Apaydın Yağcı et al., 2015).

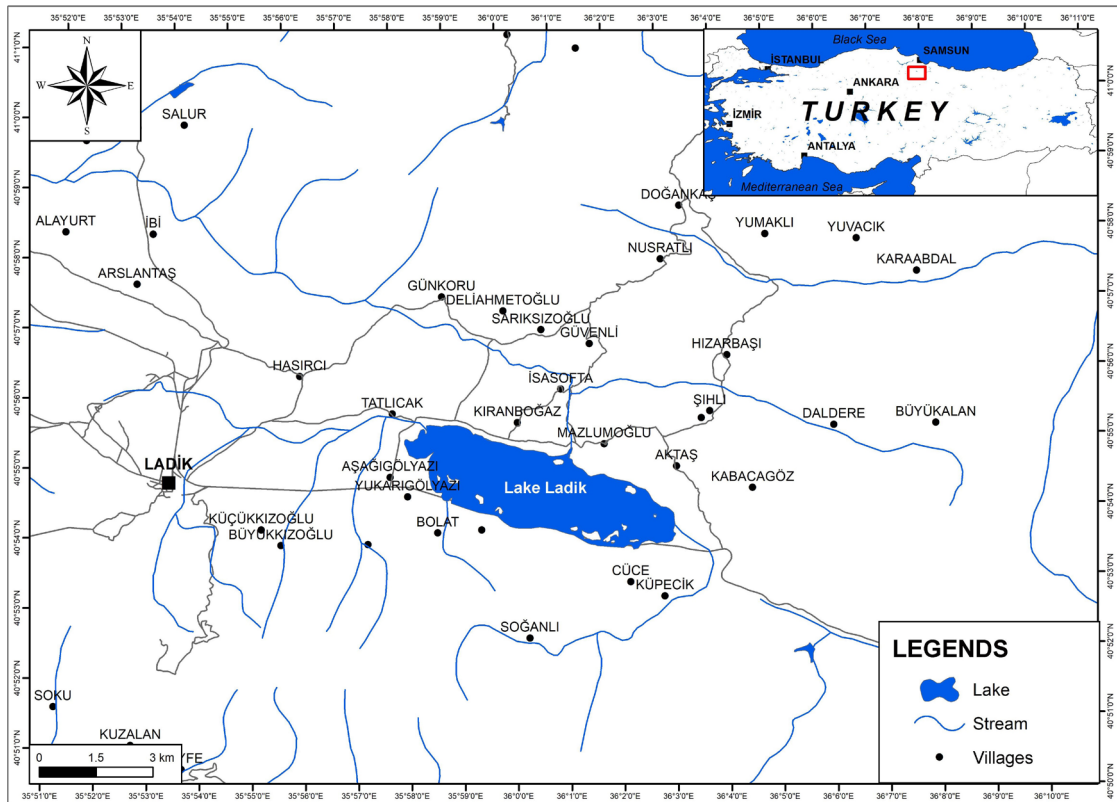


Figure 1. Map of the study area.

Sampling was conducted during the period April–November 2019. European perch samples were collected from commercial fishermen in Lake Ladik. A total of 172 specimens (90 females and 82 males) were collected, stored in a cooler, and brought to the laboratory.

2.2. Laboratory analysis

The total length (TL in cm) and sex of each fish were recorded. The studied specimens were divided into three size classes (Table 1): small (< 14 cm TL, N = 60), medium (14–20.9 cm TL, N = 60), and large fish (> 21 cm TL, N = 52). The boundaries of these size classes were established as a consequence of a diet analysis study that revealed the main shifts in feeding habits of the European perch individuals in Lake Ladik (Yazıcıoğlu et al., 2016). The sagittal otolith (sagitta) pairs were removed, washed, dried and stored in labeled plastic vials. All analyses were performed using only the right otoliths, as no significant morphometric difference between the left and right otoliths of the European perch was found in previous works (Yılmaz et al., 2014; Şimşek et al., 2019). Otoliths were viewed under a binocular microscope (Leica S8APO) at 10× magnification. Each otolith was systematically positioned with the *sulcus acusticus* facing upward and the rostrum facing left. Two-dimensional digital images of the otoliths were taken with a digital camera (Leica DFC295). Reflected light was used to obtain high-contrast digital images. Otoliths were photographed as white silhouettes on a black background.

The following morphometric variables were measured using image analysis software (Leica Application Suit ver. 3.8): otolith length (OL, mm), otolith height (OH, mm), otolith perimeter (OP, mm) and otolith area (OA, mm²) (Figure 2). Then, six shape indices (SIs) such as shape factor, aspect ratio, circularity, roundness, rectangularity, and ellipticity were calculated based on these measurements. The formulae and biological meanings of these indices are given in Table 2 (Tuset et al., 2021).

The shape of each otolith was evaluated with the elliptic Fourier analysis. This method represents the outline using several components known as harmonics. Each harmonic has four coefficients (a, b, c, d), which are the result of projecting each point of the contour onto the (x) and (y) axes. The precision of the outline description improves as the number of harmonics increases (Kuhl and Giardina, 1982). Shape 1.3 software (Iwata and Ukai, 2002) was used to calculate the elliptic Fourier coefficients (EFCs). A total of 80 coefficients were obtained for the maximum of 20 harmonics. The EFCs were normalized according to the first harmonic in the shape program and were thus made invariant against the differences in the otolith size, its orientation and the starting point of the outline. In addition, the number of harmonics required to adequately describe the otolith outline was determined using the

Table 1. Number of specimens (N) and fish size composition for each ontogenetic group of European perch from Lake Ladik.

Ontogenetic groups	Sex	N	Total length (cm)	
			Mean ± SD	Range
I	F	30	11.03 ± 1.90	7.5–13.9
	M	30	10.32 ± 1.63	8.0–13.9
II	F	30	17.38 ± 1.57	14.2–20.8
	M	30	17.15 ± 1.76	14.3–20.8
III	F	30	23.54 ± 1.76	21.3–27.5
	M	22	23.38 ± 1.63	21.1–26.5

F, female; M, male; SD, standard deviation.

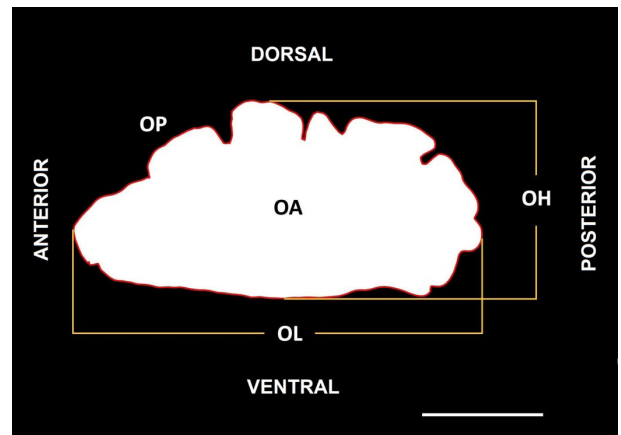


Figure 2. Proximal photograph and measurements of the right sagittal otolith of European perch from Lake Ladik. OL: otolith length, OH: otolith height, OP: otolith perimeter (red line), OA: otolith area, scale bar = 2 mm.

Fourier power spectrum (Crampton, 1995). For the n th harmonic, the Fourier power (FP_n) is given by expression:

$$FP_n = \frac{a_n^2 + b_n^2 + c_n^2 + d_n^2}{2},$$

where a_n , b_n , c_n and d_n are the Fourier coefficients of the n th harmonic. Then, the percentage Fourier power ($FP_n\%$) and the cumulative percentage of the Fourier power ($CFP_n\%$) were calculated by the following formulas:

$$FP_n\% = \left(\frac{FP_n}{\sum_1^n FP_n} \right) \times 100$$

$$CFP_n\% = \sum_1^n FP_n\%.$$

Table 2. Otolith shape indices calculated from morphometric measurements.

Shape indices	Equation	Explanation
Form factor	$(4\pi \times OA) / OP^2$	It estimates the irregularity of the otolith surface area, and takes a value of 1.0 for a perfect circle.
Aspect ratio	OL / OH	It refers to the degree of otolith elongation.
Circularity	OP^2 / OA	It compares the otolith shape to a perfect circle.
Roundness	$(4 \times OA) / (\pi \times OL^2)$	It compares the otolith shape to a perfect circle.
Rectangularity	$OA / (OL \times OH)$	It describes the variations in length and height with respect to the otolith area, and 1.0 corresponds to the perfect square.
Ellipticity	$(OL - OH) / (OL + OH)$	It gives information about whether the change in axes is proportional or not.

OL, otolith length; OH, otolith height; OP, otolith perimeter; OA, otolith area.

As 99.99% of the cumulative power was described by the first nine harmonics, the otolith shape of the European perch was summarized by 36 Fourier coefficients. However, the first three coefficients (a_1 , b_1 , c_1) derived from the 1st harmonic were not included because they degenerated during the normalization process. Therefore, the total number of EFCs for each otolith was determined as 33 ($4 \times 9 - 3$). Each of the EFCs was treated as an independent variable.

2.3. Data analysis

Before each analysis, the data were subjected to a normality and homogeneity tests, i.e. the Kolmogorov–Smirnov test (or Shapiro–Wilk test) and Levene’s test, respectively. The independent two-sample t -test or Mann–Whitney U test was used to compare the fish size of females and males in each ontogenetic group. The Kruskal–Wallis test was used to examine the distribution of fish size between ontogenetic groups.

The sex effect (female-male) on the otolith variables (SIs and EFCs) in each of the ontogenetic groups was controlled with the analysis of covariance (ANCOVA), using sex as the main factor and fish size as a covariate (Song et al., 2019). If the interaction “sex \times TL” was found to be significant in the ANCOVA, the corresponding variable was not included in subsequent analyzes because it could not be accurately standardized.

The effects of fish size on otolith parameters (SIs and EFCs) need to be examined to allow valid comparisons between ontogenetic groups. To this end, the ANCOVA test was performed by using group as the main factor and fish size as a covariate (Song et al., 2019). If the interaction “group \times TL” was significant in the ANCOVA, the parameter in question was excluded from further analyses because it could not be precisely adjusted. If it was not, this variable was standardized according to the allometric growth model (Lleonart et al., 2000):

$$M_s = M_o \left(\frac{\bar{x}}{x} \right)^b,$$

where M_s is the standardized variable; M_o is the original variable; \bar{x} is the mean fish size (16.85 cm) for all specimens from three ontogenetic groups; x is the fish size; b is a parameter calculated for each variable as the slope of the regression between $\log M_o$ and $\log x$ for each variable. However, the EFCs were not subjected to the fitting process because they were already generated in a standardized way in the Shape software (Agüera and Brophy, 2011). The standardized values of the different otolith variables (SIs and EFCs) were compared between ontogenetic groups using one-way ANOVA or the Kruskal–Wallis test by choosing an appropriate pairwise comparison test.

Since multicollinearity problem was detected among the otolith variables, a principal component analysis (PCA) based on the variance-covariance matrix was performed to reduce the dimensionality of the data. Thus, a new set of orthogonal variables, principal component scores (PCs), for the subsequent canonical discrimination analysis (CDA) was obtained to separate ontogenetic groups from each other (Song et al., 2019). The PCA was performed three times with SIs, EFCs and a combination of both variables.

The CDA was performed with the adopted PCs to compare otolith shape variations among the ontogenetic groups. Three CDA were carried out: one using only the selected PCs from SIs, another using only the selected PCs from EFCs and the last one combining both. The quadratic discriminant function analysis was employed because the assumption of the homogeneity of group covariance matrices was not met (Box’s M test, $p < 0.01$). The performance of the discriminant analysis was evaluated with the Wilks’ lambda (λ) values. The classification accuracy was estimated by using leave-one-out cross-

validation by means of the jackknife method. Comparisons among the ontogenetic groups were conducted using a permutational multivariate analysis of variance (one-way PERMANOVA; Anderson, 2001). The one-way PERMANOVA was based on the Euclidean distance and 9999 permutations.

All statistical analyzes were performed using SPSS 21.0, Minitab 17.0, PAST 3.0 (Hammer et al., 2001) and the Microsoft Excel package.

3. Results

3.1. Fish morphometry

There was no significant difference in fish size between the sexes in each group (*t*-test, $p > 0.05$ for group I and II; Mann–Whitney *U* test, $p > 0.05$ for group III). Fish size differed considerably among ontogenetic stages (Kruskal–Wallis test, $p < 0.001$).

3.2. Otolith morphometric analysis

The effect of sex difference on the SIs was not significant (ANCOVA, $p > 0.05$ in all cases). For this reason, the SI values from both sexes were combined for the next analysis. The form factor and circularity indices were omitted from further analyses because of the interaction between group and fish size observed for these parameters (ANCOVA, $p < 0.05$). The remaining four SIs (aspect ratio, roundness, rectangularity and ellipticity) were allometrically standardized with the fish size. All shape indices, except roundness, were significantly different among ontogenetic groups (one-way ANOVA, Table 3). The highest values of the SIs were observed in group II. In the PCA using only SIs, the first two PCs accounted for 100% of the total variance (99.43% for PC1, 0.57% for PC2). PC1 differentiated the groups based on the aspect ratio (correlation coefficient, $R = 0.78$) and roundness ($R = 0.58$). Roundness ($R = -0.76$), aspect ratio ($R = 0.48$) and rectangularity ($R = 0.44$) were responsible for the variation in the PC2. The results of the CDA performed using the SIs are presented in Table 4 and shown in Figure 3. The first two canonical discriminant functions were used in the CDA ($\lambda = 0.887$ for function 1–2, $p = 0.000$; $\lambda = 1.000$ for function

2, $p = 0.859$). The first function (F1) explained 99.9% of the total variance (eigenvalue, $E = 0.127$) and was closely correlated with PC1 ($R = 0.96$). The F1 distinguished group II from the other groups well. The second function (F2) explained 0.1% of the total variance ($E = 0.00$) and was closely correlated with PC2 ($R = 1.00$). The F2 was unable to separate between ontogenetic groups. The percentages of well-classified individuals obtained with the CDA were very low for group I (38.3%) and group III (30.8%). A moderate classification percentage was obtained for group II (68.3%) using the SIs. The CDA generated a 46.5% overall classification success rate. The nonparametric multivariate analysis verified the CDA results. The one-way PERMANOVA did not show significant differences among ontogenetic groups ($F = 1.82$, $p = 0.139$).

3.3. Fourier shape analysis

In the analysis of the sex effect on the EFCs, the ANCOVA test showed that seven EFCs (a2, b3, b5, b7, b8, a9, b9) differed between females and males ($p < 0.05$). Therefore, these coefficients were removed from the subsequent analysis. Regarding the effects of the fish size on the EFCs, it was determined that four EFCs (c2, d3, c4, a7) differed among ontogenetic groups (ANCOVA, $p < 0.05$). Thus, they were not included in the further analysis. According to statistical tests, four of the remaining 22 EFCs were significantly different among groups (One-way ANOVA, c3, $F = 3.36$, $p = 0.03$; d8, $F = 3.54$, $p = 0.03$; Kruskal–Wallis test, d1, $H = 105.17$, $p = 0.00$; a3, $H = 9.42$, $p = 0.01$). In the PCA using only EFCs, the first two PCs described 100% of the total variance (98.999% for PC1, 1.001% for PC2). PC1 differentiated the groups based on the coefficient d1 ($R = 0.99$). The coefficients b2 ($R = 0.58$) and c3 ($R = -0.54$) were responsible for the variation in the PC2. The first two canonical discriminant functions were used in the CDA ($\lambda = 0.409$ for function 1–2, $p = 0.000$; $\lambda = 0.955$ for function 2, $p = 0.005$). The F1 explained 96.6% of the total variance ($E = 1.333$) and was closely correlated with PC1 ($R = 0.99$). The F1 distinguished group I from the other two groups well. The F2 explained 3.4% of the total variance ($E = 0.047$) and was closely correlated with PC2 ($R = 1.00$).

Table 3. Standardized values (mean \pm SD) of the shape indices for the three size classes of European perch, and their statistical comparisons among the ontogenetic groups.

Shape indices	Group I	Group II	Group III	F	p
Aspect ratio	1.95 \pm 0.07 ^b	1.98 \pm 0.08 ^a	1.94 \pm 0.12 ^{ab}	3.68	0.03
Roundness	2.67 \pm 0.15	2.70 \pm 0.12	2.66 \pm 0.14	0.91	0.40
Rectangularity	0.69 \pm 0.02 ^b	0.70 \pm 0.02 ^a	0.69 \pm 0.02 ^b	3.58	0.03
Ellipticity	0.32 \pm 0.02 ^b	0.33 \pm 0.02 ^a	0.32 \pm 0.02 ^b	4.28	0.02

Means with different lowercase letters are significantly different. F, ANOVA test statistic; p, significance.

Table 4. Leave-one-out cross-validation matrix of the quadratic discriminant function analysis for the three ontogenetic groups of European perch, based on different variables of the otolith.

Variable	Group	Predicted group membership			Total	Overall
		I	II	III		
SIs	I	38.3	40.0	21.7	100.0	46.5
	II	20.0	68.3	11.7	100.0	
	III	32.7	36.5	30.8	100.0	
EFCs	I	88.3	10.0	1.7	100.0	69.9
	II	18.3	56.7	25.0	100.0	
	III	3.8	32.7	63.5	100.0	
SIs + EFCs	I	88.3	8.3	3.4	100.0	73.3
	II	16.7	66.6	16.7	100.0	
	III	5.8	30.7	63.5	100.0	

Correct classifications are in bold.

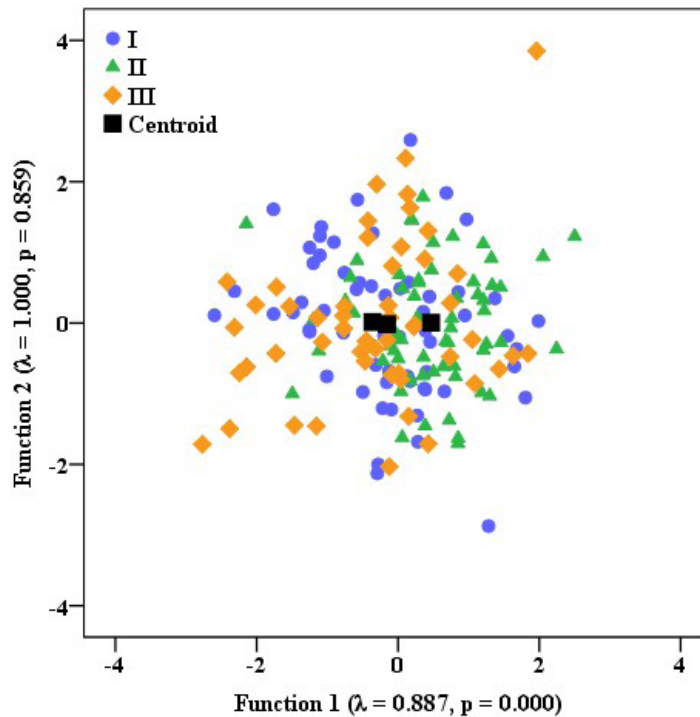


Figure 3. Quadratic discriminant function analysis plot indicating separation of the three ontogenetic groups (I, II, III) of European perch using the SIs.

The F2 separated group II from group III (Figure 4). The CDA generated an overall classification success rate of 69.9% (Table 4). The highest rate was obtained for group I (88.3%), followed by group III (63.5%) and group II (56.7%). The nonparametric multivariate analysis verified the CDA results. The one-way PERMANOVA yielded

significant differences among the three ontogenetic groups ($F = 37.79$, $p = 0.0001$). Pairwise comparison detected considerable differences between groups I and II ($p < 0.0002$), groups I and III ($p < 0.0002$), and groups II and III ($p < 0.0002$). The reconstruction of the otolith shape outline from the average EFCs for each ontogenetic group

is shown in Figure 5. The main shape differences appeared on the dorsal margin, and also the posterior-dorsal and posterior-ventral regions of the otolith.

3.4. Combination of the two methods

In PCA with a combination of SIs and EFCs, the first two PCs accounted for 100% of the total variance (72.05% for PC1, 27.95% for PC2). The coefficient d1 ($R = 0.98$) was responsible for the major variation in the PC1. The second component (PC2) was defined by aspect ratio ($R = 0.77$) and roundness ($R = 0.56$). The first two canonical discriminant functions were used in the CDA ($\lambda = 0.385$ for function 1-2, $p = 0.000$; $\lambda = 0.892$ for function 2, $p = 0.000$). The F1 ($E = 1.317$) was strongly related to PC1 ($R = 0.96$) and explained 91.6% of the total variance, distinguishing group I well from the other two groups. The F2 ($E = 0.121$) was strongly correlated with PC2 ($R = 0.99$) and explained 8.4% of the total variance, separating groups II and III (Figure 6). The CDA achieved an overall classification success rate of 73.3% (Table 4). The highest rate was obtained for group I (88.3%), followed by group II (66.6%) and group III (63.5%). These results were also confirmed by the one-way PERMANOVA which showed a significant difference among groups ($F = 5.67$, $p < 0.001$).

4. Discussion

The results of this study indicated the presence of ontogenetic variations in the sagittal otolith shape of

European perch captured from Lake Ladik. In many studies carried out with different fish species, it has been reported that otolith morphology varies according to ontogenetic stages represented by size groups (Xiong et al., 2015; Montanini et al., 2017; Cerna et al., 2019; Motamedi et al., 2021; Teimori et al., 2021). Traditional morphometry analysis based on different shape indices showed that the sagittal otolith of the species is elongated and oval-shaped. The same observation was also reported by some researchers who have studied the otolith morphometry of European perch (Yilmaz et al., 2014; Sapota and Dabrowska, 2019). However, Sapota and Dabrowska (2019) reported that there was no change in European perch otolith shape during fish growth. Contrary to Sapota and Dabrowska (2019), we detected some differences in aspect ratio, rectangularity, and ellipticity indices according to fish size classes. While the highest values of shape indices were obtained for the fish in the medium-sized group, the lowest values were calculated for the individuals in the large-sized group. This finding indicates that the otoliths of medium-sized specimens are more elongated and have a more oval shape. Similar to our results, Biolé et al. (2019) reported that medium-sized individuals of *Odontesthes argentinensis* have a higher aspect ratio and rectangularity values than small- and large-sized ones. Callicó Fortunato et al. (2017) found that the smaller individuals of *Mugil liza* have a lower aspect ratio and therefore a more rectangular

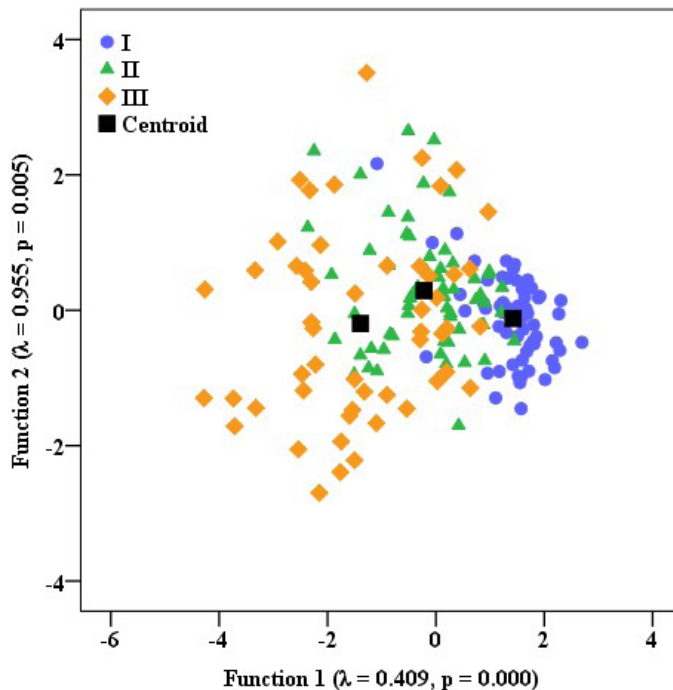


Figure 4. Quadratic discriminant function analysis plot indicating separation of the three ontogenetic groups (I, II, III) of European perch using the EFCs.

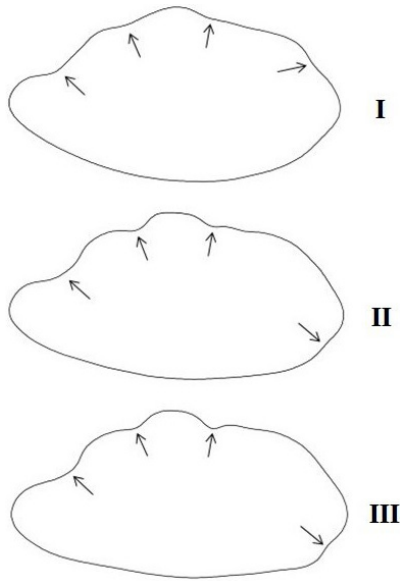


Figure 5. Average shapes of the otoliths of European perch in the three ontogenetic groups, based on the mean EFCs. Arrows show the main shape differences.

otolith shape, while larger specimens tend to have a more circular otolith. Bostanci et al. (2015) determined that the ellipticity index increased with total length in *Alburnus mossulensis*, while it decreased in *Alburnus tarichi*. Tuset et al. (2003) observed that the otoliths turned into a more oval shape with the increased length in *Serranus scriba*.

Our work showed that the aspect ratio, roundness, and rectangularity indices are more effective in discriminating the ontogenetic stages. However, we were able to achieve a low overall classification success of 46.5% for the ontogenetic group discrimination of European perch, with otolith shape indices mentioned above. The failure of shape indices in the differentiation of ontogenetic groups may be associated with the lack of sufficient and independent morphometric variables. Recently, the insufficiency of classical indices in identifying fish species has been documented, and their routine usage is no longer recommended (Tuset et al., 2021). Although the biological interpretation of elliptic Fourier analysis is more complex than linear morphometry (Stransky and MacLellan, 2005), it is considered the most objective and powerful shape analysis technique to capture all shape variations and small-scale individual differences in otolith outlines (Campana and Casselman, 1993). In the present study, three ontogenetic groups of European perch were classified with an accuracy of 69.9% using elliptical Fourier coefficients. Similarly, Biolé et al. (2019) achieved a high overall classification success of 98.4% in separating the three ontogenetic developmental stages of *Odontesthes argentinensis* using elliptical Fourier descriptors. Our study

also disclosed that using elliptical Fourier coefficients alone or combining them with morphometric variables in describing ontogenetic changes in sagittal otoliths of European perch provides higher classification success than using shape indices alone. Similar findings have been obtained in other species, such as *Sebastes spp.* (Zhuang et al., 2015), *Astyanax spp.* (Avigliano et al., 2018), and *Nibea albiflora* (Song et al., 2019).

Otolith morphology is regulated by a complex combination of physiological (sexual maturity, growth, etc.) and environmental (temperature, salinity, depth, diet, etc.) factors (Vignon and Morat, 2010; Mille et al., 2015). The effects of these factors on the otolith shape may be more or less depending on the fish species and otolith type (Bounket et al., 2019). Hüsey (2008) suggested that the general shape of the otolith is an ontogenetic process and that finer details can be changed by environmental conditions, particularly feeding level (Gagliano and McCormick, 2004) and nutrient availability (Cardinale et al., 2004). On the other hand, it has been reported that diet composition may be a source of otolith shape variation through direct and/or indirect (otolith growth) processes (Mille et al., 2016). Moreover, ontogenetic changes in diet composition may contribute to the differentiation of otolith morphology (Morat et al., 2012; Biolé et al., 2019). The diet of European perch inhabiting Lake Ladik displays marked changes according to size classes. The small-sized fish (<14 cm TL) fed only on macroinvertebrates, while large-sized individuals (>21 cm TL) only consume prey fish. The diet of medium-sized specimens (14-20.9 cm TL) is composed of more prey fish and fewer macroinvertebrates (Yazıcıoğlu et al., 2016). These ontogenetic shifts in diet were reflected in the otolith shape, and the three size groups were correctly classified with a ratio of 73.3%. However, the most marked differences were observed in otoliths of the small-sized fish, with a classification accuracy of 88.3%. The classification accuracies were 66.6% and 63.5%, respectively, for medium- and large-sized fish. This case indicates that the otolith shape does not change much after the European perch reaches 14 cm in length. According to some authors, the most visible change in otolith shape occurs in a size corresponding to the onset of sexual maturity (Tuset et al., 2003; Gonzalez Naya et al., 2012; Xiong et al., 2015). This is the size in which metabolism is markedly altered, sexual maturation affects fish growth and thus has an impact on otolith shape (Morat et al., 2012). Therefore, in addition to the morphological differences between juvenile and adult fish, it is also possible to identify variations in otolith growth rates before and after first reproduction (Carvalho et al., 2015). The size of the first sexual maturity of the European perch specimens in Lake Ladik is unknown. However, Kottelat and Freyhof (2007) reported that sexual maturity of this species was reached in the size range

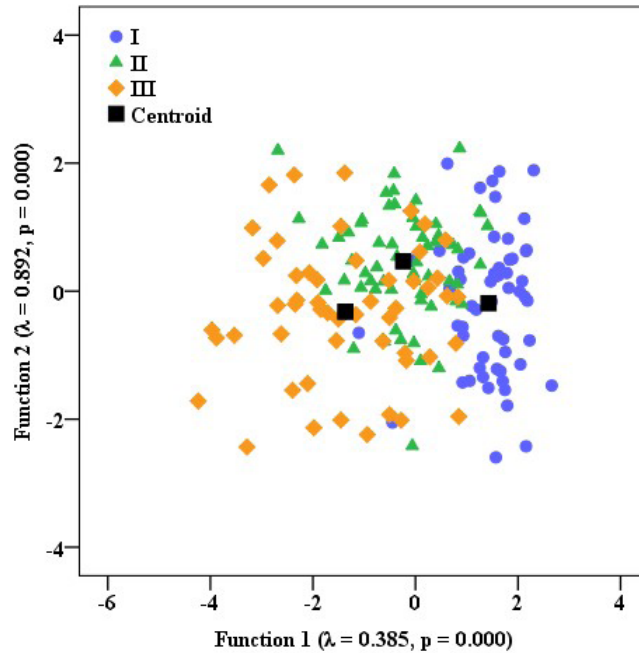


Figure 6. Quadratic discriminant function analysis plot indicating separation of the three ontogenetic groups (I, II, III) of European perch using the SIs plus EFCs.

corresponding to 1–2 years of age in males and 2–4 years of age in females. When these age ranges are accepted for the European perch specimens in the study area, the first maturity corresponds to 11.9 cm TL (8.7–14 cm) in males and 15.7 cm TL (11–21.5 cm) in females (Saygin et al., 2016). In this case, group I, which contains 80% of the immature fish, represents the juvenile stage of the species, while group II and III, which contains 97% of the mature individuals, corresponds to the adult stage. Discrimination analyses revealed the morphological differences in the otoliths of fish belonging to the two stages.

In conclusion, this study showed that there is clear ontogenetic variation in the otolith shape, which could be valuable to characterize different life stages of European perch. In distinguishing the ontogenetic stages represented by size groups, otolith shape analysis was more effective than morphometric analysis. Simultaneous use of both methods strengthened the analysis. The observed changes in sagittal otolith shape throughout the ontogeny of European perch living in Lake Ladik were associated with

both dietary shifts and sexual maturity. The outcomes of the present work can be used in future studies on the trophic ecology of European perch predators and in population studies based on the contour of otoliths of this species.

Acknowledgments

The authors would like to thank all local fishermen for fish sampling. This study was produced from the master thesis of the first author.

Conflict of interest

The authors declare that they have no conflict of interest.

Ethical statement

Ethical approval was not required for the animal study because fish samples were obtained from the local fishermen. The present work did not conduct any type of experiments on living animals.

References

- Agüera A, Brophy D (2011). Use of sagittal otolith shape analysis to discriminate Northeast Atlantic and Western Mediterranean stocks of Atlantic saury, *Scomberesox saurus saurus* (Walbaum). Fisheries Research 110: 465-471. doi: 10.1016/j.fishres.2011.06.003
- Anderson MJ (2001). A new method for non-parametric multivariate analysis of variance. Austral Ecology 26: 32-46. doi: 10.1111/j.1442-9993.2001.01070.pp.x

- Apaydın Yağcı M, Yılmaz S, Yazıcıoğlu O, Polat N (2015). The zooplankton composition of Lake Ladik (Samsun, Turkey). *Turkish Journal of Zoology* 39: 652-659. doi:10.3906/zoo-1312-54
- Assis IO, da Silva VE, Souto-Vieira D, Lozano AP, Volpedo AV et al. (2020). Ecomorphological patterns in otoliths of tropical fishes: assessing trophic groups and depth strata preference by shape. *Environmental Biology of Fishes* 103: 349-361. doi: 10.1007/s10641-020-00961-0
- Avigliano E, Martinez CFR, Volpedo AV (2014). Combined use of otolith microchemistry and morphometry as indicators of the habitat of the silverside (*Odontesthes bonariensis*) in a freshwater-estuarine environment. *Fisheries Research* 149: 55-60. doi:10.1016/j.fishres.2013.09.013
- Avigliano E, Rolón ME, Rosso JJ, Mabragaña E, Volpedo AV (2018). Using otolith morphometry for the identification of three sympatric and morphologically similar species of *Astyanax* from the Atlantic Rain Forest (Argentina). *Environmental Biology of Fishes*, 101: 1319-1328. doi: 10.1007/s10641-018-0779-2
- Başusta N, Khan U (2021). Sexual dimorphism in the otolith shape of shi drum, *Umbrina cirrosa* (L.), in the eastern Mediterranean Sea: Fish size-otolith size relationships. *Journal of Fish Biology* 99: 164-174. doi: 10.1111/jfb.14708
- Biolé FG, Fortunato RC, Thompson GA, Volpedo AV (2019). Application of otolith morphometry for the study of ontogenetic variations of *Odontesthes argentinensis*. *Environmental Biology of Fishes* 102: 1301-1310. doi: 10.1007/s10641-019-00908-0
- Bolles KL, Begg GA (2000). Distinction between silver hake (*Merluccius bilinearis*) stocks in US waters of the northwest Atlantic based on whole otolith morphometrics. *Fishery Bulletin* 98: 451-451.
- Bostanci D, Polat N, Kurucu G, Yedier S, Konaş S et al. (2015). Using otolith shape and morphometry to identify four *Alburnus* species (*A. chalcoides*, *A. escherichii*, *A. mossulensis* and *A. tarichi*) in Turkish inland waters. *Journal of Applied Ichthyology*, 31: 1013-1022. doi: 10.1111/jai.12860
- Bounket B, Gibert P, Gennotte V, Argillier C, Carrel G et al. (2019). Otolith shape analysis and daily increment validation during ontogeny of larval and juvenile European chub *Squalius cephalus*. *Journal of Fish Biology* 95: 444-452. doi: 10.1111/jfb.13976
- Byrd BL, Hohn AA, Krause JR (2020). Using the otolith sulcus to aid in prey identification and improve estimates of prey size in diet studies of a piscivorous predator. *Ecology and Evolution* 10: 3584-3604. doi: 10.1002/ece3.6085
- Callicó Fortunato R, Benedito Durà V, González-Castro M, Volpedo A (2017). Morphological and morphometric changes of sagittae otoliths related to fish growth in three Mugilidae species. *Journal of Applied Ichthyology* 33: 1137-1145. doi: 10.1111/jai.13479
- Campana SE (2004). *Photographic atlas of fish otoliths of the Northwest Atlantic Ocean*. Ottawa: NRC Research Press.
- Campana SE, Casselman JM (1993). Stock discrimination using otolith shape analysis. *Canadian Journal of Fisheries and Aquatic Sciences* 50: 1062-1083. doi: 10.1139/f93-123
- Capoccioni F, Costa C, Aguzzi J, Menesatti P, Lombarte A et al. (2011). Ontogenetic and environmental effects on otolith shape variability in three Mediterranean European eel (*Anguilla anguilla*, L.) local stocks. *Journal of Experimental Marine Biology and Ecology* 397: 1-7. doi: 10.1016/j.jembe.2010.11.011
- Cardinale M, Doering-Arjes P, Kastowsky M, Mosegaard H (2004). Effects of sex, stock, and environment on the shape of known-age Atlantic cod (*Gadus morhua*) otoliths. *Canadian Journal of Fisheries and Aquatic Sciences* 61: 158-167. doi: 10.1139/f03-151
- Carvalho BM, Spach H, Vaz-Dos-Santos A, Volpedo AV (2019). Otolith shape index: Is it a tool for trophic ecology studies? *Journal of the Marine Biological Association of the United Kingdom* 99: 1675-1682. doi:10.1017/S0025315419000729
- Carvalho BM, Vaz-dos-Santos AM, Spach HL, Volpedo AV (2015). Ontogenetic development of the sagittal otolith of the anchovy, *Anchoa tricolor*, in a subtropical estuary. *Scientia Marina* 79: 409-418. doi: 10.3989/scimar.04218.31A
- Ceccuzzi P, Terova G, Brambilla F, Antonini M, Saroglia M (2011). Growth, diet, and reproduction of Eurasian perch *Perca fluviatilis* L. in Lake Varese, northwestern Italy. *Fisheries Science*, 77(4), 533-545. doi: 10.1007/s12562-011-0353-8
- Cerna F, Saavedra-Nievas JC, Plaza-Pasten G, Niklitschek E, Morales-Nin B (2019). Ontogenetic and intraspecific variability in otolith shape of anchoveta (*Engraulis ringens*) used to identify demographic units in the Pacific Southeast off Chile. *Marine and Freshwater Research* 70: 1794-1804. doi: 10.1071/MF18278
- Coelho GCZ, da Silva Costa R, Bashioy-Silva C, Silva de Souza FM, de Castro Ribeiro D et al. (2019). Characterization of the initial ontogeny of *Leiarius marmoratus* (Gill, 1870): larvae to juvenile. *Journal of Applied Ichthyology* 35: 719-727. doi: 10.1111/jai.13830
- Craig JF (2000). *Percid fishes: systematics, ecology, and exploitation*. Blackwell Science Ltd., Oxford.
- Crampton JS (1995). Elliptic Fourier shape analysis of fossil bivalves, practical consideration. *Lethaia* 28: 179-186. doi:10.1111/j.1502-3931.1995.tb01611.x
- Curcio N, Tombari A, Capitano F (2014). Otolith morphology and feeding ecology of an Antarctic nototheniid, *Lepidonotothen larseni*. *Antarctic Science* 26: 124-132. doi: 10.1017/S0954102013000394
- Davoodi P, Rahimian H (2016). Identifying *Neogobius* species from the southern Caspian Sea by otolith shape (Teleostei: Gobiidae). *Zootaxa* 4205: 81-86. doi: 10.11646/zootaxa.4205.1.7
- Deng X, Wagner HJ, Popper AN (2011). The inner ear and its coupling to the swim bladder in the deep-sea fish *Antimora rostrata* (Teleostei: Moridae). *Deep Sea Research Part I: Oceanographic Research Papers* 58: 27-37. doi: 10.1016/j.dsr.2010.11.001
- Gagliano M, McCormick MI (2004). Feeding history influences otolith shape in tropical fish. *Marine Ecology Progress Series* 278: 291-296. doi:10.3354/meps278291

- Gonzalez Naya MJ, Tombari A, Volpedo A, Gómez SE (2012). Size related changes in sagitta otoliths of *Australoheros facetus* (Pisces; Cichlidae) from South America. *Journal of Applied Ichthyology* 28: 752-755. doi: 10.1111/j.1439-0426.2012.02006.x
- Gonzalez-Salas C, Lenfant P (2007). Interannual variability and intraannual stability of the otolith shape in European anchovy *Engraulis encrasicolus* (L.) in the Bay of Biscay. *Journal of Fish Biology* 70: 35-49. doi: 10.1111/j.1095-8649.2006.01243.x
- Hammer Ø, Harper DA, Ryan PD (2001). PAST: paleontological statistics software package for education and data analysis. *Palaeontologia Electronica* 4: 1-9.
- Heral O, Bayhan B (2020). Age and growth of Morocco dentex *Dentex maroccanus* Valenciennes, 1830 (Actinopterygii: Sparidae) in Izmir Bay, Central Aegean Sea, Turkey. *Acta Zoologica Bulgarica* 72: 149-154.
- Hjelm J, Persson L, Christensen B (2000). Growth, morphological variation and ontogenetic niche shifts in perch (*Perca fluviatilis*) in relation to resource availability. *Oecologia* 122: 190-199.
- Hüssy K (2008). Otolith shape in juvenile cod (*Gadus morhua*): Ontogenetic and environmental effects. *Journal of Experimental Marine Biology and Ecology* 364: 35-41. doi: 10.1016/j.jembe.2008.06.026
- Iwata H, Ukai Y (2002). SHAPE: a computer program package for quantitative evaluation of biological shapes based on elliptic Fourier descriptors. *Journal of Heredity* 93: 384-385. doi:10.1093/jhered/93.5.384
- Jaramillo AM, Tombari AD, Benedito Dura V, Santamalia R, Eugenia M et al. (2014). Otolith eco-morphological patterns of benthic fishes from the coast of Valencia (Spain). *Thalassas*, 30: 57-66.
- Khan MA, Khan S, Ahmed I, Nadeem M (2019). Age and growth of spotted snakehead, *Channa punctata* from the Ganga River. *Journal of Ichthyology* 59: 197-204. doi: 10.1134/S0032945219020103
- Kottelat M, Freyhof J (2007). Handbook of European freshwater fishes. Kottelat, Cornol, Switzerland and Freyhof, Berlin, Germany
- Kuhl FP, Giardina CR (1982). Elliptic Fourier features of a closed contour. *Computer Graphics and Image Processing* 18: 236-258. doi: 10.1016/0146-664X(82)90034-X
- Lin YJ, Al-Abdulkader K (2019). Identification of fish families and species from the western Arabian Gulf by otolith shape analysis and factors affecting the identification process. *Marine and Freshwater Research* 70: 1818-1827. doi: 10.1071/MF18282
- Lleonart J, Salat J, Torres GJ (2000). Removing allometric effects of body size in morphological analysis. *Journal of Theoretical Biology* 205: 85-93. doi: 10.1006/jtbi.2000.2043
- Mahé K, Gourtay C, Defruit GB, Chantre C, de Pontual H et al. (2019). Do environmental conditions (temperature and food composition) affect otolith shape during fish early-juvenile phase? An experimental approach applied to European Seabass (*Dicentrarchus labrax*). *Journal of Experimental Marine Biology and Ecology* 521: 151239. doi: 10.1016/j.jembe.2019.151239
- Mille T, Mahé K, Cachera M, Villanueva MC, De Pontual H et al. (2016). Diet is correlated with otolith shape in marine fish. *Marine Ecology Progress Series* 555: 167-184. doi.org/10.3354/meps11784
- Mille T, Mahé K, Villanueva MC, de Pontual H, Ernande B (2015). Sagittal otolith morphogenesis asymmetry in marine fishes. *Journal of Fish Biology* 87: 646-663. doi: 10.1111/jfb.12746
- Montanini S, Stagioni M, Benni E, Vallisneri M (2017). Ontogenetic changes in otolith morphology and shape analyses in *Chelidonichthys cuculus* (Linnaeus, 1758) and *Chelidonichthys lucerna* (L., 1758). *Journal of Applied Ichthyology* 33: 217-220. doi: 10.1111/jai.13299
- Monteiro LR, Di Beneditto APM, Guillermo LH, Rivera LA (2005). Allometric changes and shape differentiation of sagitta otoliths in sciaenid fishes. *Fisheries Research* 74: 288-299. doi: 10.1016/j.fishres.2005.03.002
- Morat F, Letourneur Y, Nérini D, Banaru D, Batjakas IE (2012). Discrimination of red mullet populations (Teleostean, Mullidae) along multi-spatial and ontogenetic scales within the Mediterranean basin on the basis of otolith shape analysis. *Aquatic Living Resources* 25: 27-39. doi: 10.1051/alr/2011151
- Motamedi M, Teimori A, Iranmanesh A (2021). Ontogenetic pattern, morphological sexual and side dimorphism in the saccular otolith of a scaleless killifish *Aphanius furcatus* (Teleostei: Aphaniidae). *Acta Zoologica* 102: 38-50. doi: 10.1111/azo.12313
- Ozpicak M, Saygin S, Aydın A, Hancer E, Yilmaz S et al. (2018). Otolith shape analyses of *Squalius cephalus* (Linnaeus, 1758) (Actinopterygii: Cyprinidae) inhabiting four inland water bodies of the middle Black Sea region, Turkey. *Iranian Journal of Ichthyology* 5: 293-302. doi: 10.22034/iji.v5i4.311
- Paul K, Oeberst R, Hammer C (2013). Evaluation of otolith shape analysis as a tool for discriminating adults of Baltic cod stocks. *Journal of Applied Ichthyology* 29: 743-750. doi: 10.1111/jai.12145
- Persson L, Diehl S, Johansson L, Andersson G, Hamrin SF (1991). Shifts in fish communities along the productivity gradient of temperate lakes—patterns and the importance of size-structured interactions. *Journal of Fish Biology* 38: 281-293. doi: 10.1111/j.1095-8649.1991.tb03114.x
- Quist MC, Pegg MA, DeVries DR (2012): Age and growth. In: Zale A, Parrish D, Sutton T. (editors). *Fisheries Techniques*. American Fisheries Society, Bethesda, Maryland, USA, pp. 677-731.
- Reichenbacher B, Kowalke T (2009). Neogene and present-day zoogeography of killifishes (*Aphanius* and *Aphanolebias*) in the Mediterranean and Paratethys areas. *Palaeogeography, Palaeoclimatology, Palaeoecology* 281: 43-56. doi: 10.1016/j.palaeo.2009.07.008
- Reichenbacher B, Sienknecht U, Küchenhoff H, Fenske N. (2007). Combined otolith morphology and morphometry for assessing taxonomy and diversity in fossil and extant killifish (*Aphanius*,† *Prolebias*). *Journal of Morphology* 268: 898-915. doi: 10.1002/jmor.10561

- Sapota MR, Dąbrowska V (2019). Shapes of otoliths in some Baltic fish and their proportions. *Oceanological and Hydrobiological Studies* 48: 296-304. doi: 10.2478/ohs-2019-0027
- Saygin S, Yilmaz S, Yazicioglu O, Polat N (2016). Biological characteristics of European perch (*Perca fluviatilis* L., 1758) inhabiting Lake Ladik (Samsun, Turkey). *Croatian Journal of Fisheries* 74: 141-148. doi: 10.1515/cjf-2016-0017
- Schulz-Mirbach T, Riesch R, de León FJG, Plath M (2011). Effects of extreme habitat conditions on otolith morphology—a case study on extremophile livebearing fishes (*Poecilia mexicana*, *P. sulphuraria*). *Zoology* 114: 321-334. doi: 10.1016/j.zool.2011.07.004
- Şimşek C, Polat N, Özpiçak M, Saygin S, Yilmaz S (2019). The relationships between otolith dimensions-total length and otolith features of European Perch (*Perca fluviatilis* L., 1758) sampled from Yedikır Dam Lake (Turkey). *Journal of Anatolian Environmental and Animal Sciences* 4: 348-353. doi: 10.35229/jaes.594985
- Song J, Zhao B, Liu J, Cao L, Dou S (2019). Comparative study of otolith and sulcus morphology for stock discrimination of yellow drum along the Chinese coast. *Journal of Oceanology and Limnology* 37: 1430-1439. doi: 10.1007/s00343-019-8056-6
- Souza AT, Soukalová K, Děd V, Šmejkal M, Blabolil P et al. (2020). Ontogenetic and interpopulation differences in otolith shape of the European perch (*Perca fluviatilis*). *Fisheries Research* 230: 105673. doi: 10.1016/j.fishres.2020.105673
- Stransky C, MacLellan SE (2005). Species separation and zoogeography of redfish and rockfish (genus *Sebastes*) by otolith shape analysis. *Canadian Journal of Fisheries and Aquatic Sciences* 62: 2265-2276. doi: 10.1139/f05-143
- Teimori A, Motamedi M, Zeinali F (2021). Intrapopulation variation of otolith associated with ontogeny and morphological dimorphism in Hormuz tooth-carp *Aphanius hormuzensis* (Teleostei: Aphaniidae). *Acta Zoologica* 102: 250-264. doi: 10.1111/azo.12332
- Tuset VM, Lombarte A, González JA, Pertusa JF, Lorente M (2003). Comparative morphology of the sagittal otolith in *Serranus* spp. *Journal of Fish Biology* 63: 1491-1504. doi: 10.1111/j.1095-8649.2003.00262.x
- Tuset VM, Otero-Ferrer JL, Siliprandi C, Manjabacas A, Marti-Puig P et al. (2021). Paradox of otolith shape indices: routine but overestimated use. *Canadian Journal of Fisheries and Aquatic Sciences* 78: 681-692. doi: 10.1139/cjfas-2020-0369
- Vasconcelos J, Vieira AR, Sequeira V, Gonzalez JA, Kaufmann M et al. (2018). Identifying populations of the blue jack mackerel (*Trachurus picturatus*) in the Northeast Atlantic by using geometric morphometrics and otolith shape analysis. *Fishery Bulletin* 116: 81-92. doi: 10.7755/FB.116.1.9
- Vignon M (2012). Ontogenetic trajectories of otolith shape during shift in habitat use: Interaction between otolith growth and environment. *Journal of Experimental Marine Biology and Ecology* 420-421: 26-32. doi: 10.1016/j.jembe.2012.03.021
- Vignon M, Morat F (2010). Environmental and genetic determinant of otolith shape revealed by a non-indigenous tropical fish. *Marine Ecology Progress Series* 411: 231-241. doi: 10.3354/meps08651
- Villegas-Hernández H, Lloret J, Muñoz M, Poot-López GR, Guillén-Hernández S et al. (2018). Age-specific environmental differences on the otolith shape of the bastard grunt (*Pomadourus incisus*) in the north-western Mediterranean. *Environmental Biology of Fishes* 101: 775-789. doi: 10.1007/s10641-018-0737-z
- Volpedo AV, Fuchs DV (2010). Ecomorphological patterns of the lapilli of Paranoplatense Siluriforms (South America). *Fisheries Research* 102: 160-165. doi: 10.1016/j.fishres.2009.11.007
- Wiff R, Flores A, Segura AM, Barrientos MA, Ojeda V (2020). Otolith shape as a stock discrimination tool for ling (*Genypterus blacodes*) in the fjords of Chilean Patagonia. *New Zealand Journal of Marine and Freshwater Research* 54: 218-232. doi: 10.1080/00288330.2019.1701047
- Wright PJ, Panfili J, Morales-Nin B, Geffen AJ (2002). Types of calcified structures. In: Panfili J, Pontual H (de), Troadec H, Wright PJ (editors). *Manual of Fish Sclerochronology*. Ifremer-IRD Coedition. Brest, France, pp. 31-57.
- Xiong Y, Yang J, Zhang ZH, Liu HB, Jiang T et al. (2015). Factors affecting morphological development of the sagittal otolith in juvenile and adult small yellow croaker (*Larimichthys polyactis* Bleeker, 1877). *Journal of Applied Ichthyology* 31: 1023-1028. doi: 10.1111/jai.12914
- Yan T, Hu J, Cai Y, Xiong S, Yang S et al. (2017). Otolith development in larval and juvenile *Schizothorax davidi*: ontogeny and growth increment characteristics. *Chinese Journal of Oceanology and Limnology* 35: 1197-1204. doi: 10.1007/s00343-017-6138-x
- Yazıcıoğlu O, Yılmaz S, Yazıcı R, Erbaşaran M, Polat N (2016). Feeding ecology and prey selection of European perch, *Perca fluviatilis* inhabiting a eutrophic lake in northern Turkey. *Journal of Freshwater Ecology* 31: 641-651. doi: 10.1080/02705060.2016.1220432
- Ye ZJ, Zhang C, Panhwar SK, Li ZG, Wan R (2015). Ageing Belanger's croaker, *Johnius belangerii* (Cuvier, 1830), based on otolith shape analysis. *Journal of Applied Ichthyology* 31: 27-31. doi: 10.1111/jai.12451
- Yilmaz S, Yazicioglu O, Saygin S (A), Polat N (2014). Relationships of otolith dimensions with body length of European perch, *Perca fluviatilis* L., 1758 from Lake Ladik, Turkey. *Pakistan Journal of Zoology* 46: 1231-1238.
- Yilmaz S, Yazıcıoğlu O, Yazıcı R, Polat N (2015). Relationships between fish length and otolith size for five cyprinid species from Lake Ladik, Samsun, Turkey. *Turkish Journal of Zoology* 39: 438-446. doi:10.3906/zoo-1403-58
- Zhao B, Liu J, Song J, Cao L, Dou S (2018). Otolith shape analysis for stock discrimination of two *Collichthys* genus croaker (Pisces: Sciaenidae,) from the northern Chinese coast. *Journal of Oceanology and Limnology* 36: 981-989. doi: 10.1007/s00343-018-7082-0
- Zhuang L, Ye Z, Zhang C (2015). Application of otolith shape analysis to species separation in *Sebastes* spp. from the Bohai Sea and the Yellow Sea, northwest Pacific. *Environmental Biology of Fishes* 98: 547-558. doi: 10.1007/s10641-014-0286-z