

STUDY PROTOCOL

Open Access



Effects of Kami Guibi-tang in patients with mild cognitive impairment: study protocol for a phase III, randomized, double-blind, and placebo-controlled trial

Hee-Yeon Shin^{1,2}, Tae-Bin Yim^{2,3}, Hye-Min Heo^{2,3}, Geon-Ho Jahng⁴, Seungwon Kwon⁵, Seung-Yeon Cho^{3,5}, Seong-Uk Park^{3,5}, Woo-Sang Jung⁵, Sang-Kwan Moon⁵, Chang-Nam Ko^{3,5} and Jung-Mi Park^{3,5*}

Abstract

Background: Amnesic mild cognitive impairment (aMCI) is often considered a precursor to Alzheimer's disease (AD) and represents a key therapeutic target for early intervention of AD. However, no treatments have been approved for MCI at present. Our previous pilot study has shown that Kami Guibi-tang (KGT), a traditional herbal prescription widely used in Korean medicine for treating amnesia, might be beneficial for improving general cognitive function of aMCI patients. We will conduct a larger-scale clinical trial to validate the findings of our pilot study and further examine the efficacy and safety of KGT in aMCI.

Methods: This trial is designed as a randomized, double-blind, placebo-controlled clinical trial. A total of 84 aMCI patients will be recruited and randomized into the treatment and control groups. Participants will be administered either KGT or placebo granules for 24 weeks, with a follow-up period of 12 weeks after the last treatment. Primary outcomes will include changes in cognitive performance assessed using a neuropsychological test battery, called the Seoul Neuropsychological Screening Battery, between the baseline, post-intervention visit, and follow-up visit (24th and 36th week, respectively). Secondary outcomes will involve the rate of progression to AD, changes in neuroimaging signals assessed using structural magnetic resonance imaging (MRI), resting-state functional MRI (rs-fMRI), and task-based fMRI, and changes in blood biomarkers measured by the ratio of plasma amyloid- β 42/40 levels (A β 42/A β 40) between the baseline and post-intervention visit (24th week). For safety assessments, blood chemistry tests and electrocardiograms (ECG) will also be performed.

Discussion: This study aims to provide confirmatory evidence of the effect of the Korean herbal medicine, KGT, on improving cognitive function in patients with aMCI. We will identify the possible mechanisms underlying the effects of KGT using neuroimaging signals and blood biomarkers.

Trial registration: Korean Clinical Trial Registry (<https://cris.nih.go.kr/cris/search/detailSearch.do/16918>; Registration number: KCT0007039; Date of registration: February 24, 2022).

*Correspondence: pajama@khu.ac.kr

⁵ Department of Cardiology and Neurology, College of Korean Medicine, Kyung Hee University, 26 Kyunghedae-ro, Dongdaemun-gu, Seoul 02447, Republic of Korea

Full list of author information is available at the end of the article



© The Author(s) 2022. **Open Access** This article is licensed under a Creative Commons Attribution 4.0 International License, which permits use, sharing, adaptation, distribution and reproduction in any medium or format, as long as you give appropriate credit to the original author(s) and the source, provide a link to the Creative Commons licence, and indicate if changes were made. The images or other third party material in this article are included in the article's Creative Commons licence, unless indicated otherwise in a credit line to the material. If material is not included in the article's Creative Commons licence and your intended use is not permitted by statutory regulation or exceeds the permitted use, you will need to obtain permission directly from the copyright holder. To view a copy of this licence, visit <http://creativecommons.org/licenses/by/4.0/>. The Creative Commons Public Domain Dedication waiver (<http://creativecommons.org/publicdomain/zero/1.0/>) applies to the data made available in this article, unless otherwise stated in a credit line to the data.

Keywords: Mild cognitive impairment (MCI), Amnesic mild cognitive impairment (aMCI), Kami Guibi-tang, Herbal medicine, Herbal formula, Korean medicine, Neuropsychological test, Functional magnetic resonance imaging (fMRI)

Background

Mild cognitive impairment (MCI) is a transitional stage between the cognitive changes in normal aging and those found in dementia. It is characterized by self- or informant-reported cognitive complaints and objective cognitive decline with preserved independence in daily abilities [1]. Up to 60% of patients with MCI develop dementia within a 10-year period [2]. The amnesic form of MCI, in which memory loss is the predominant symptom, is associated with the pathology of Alzheimer's disease (AD) and is often a prodromal stage of AD [3]. About 10–15% of patients with amnesic mild cognitive impairment (aMCI) progress to AD every year, and almost 50% of these patients convert to AD after 3 years [4]. Early intervention at the MCI stage may delay the progression to AD [5]. However, there are currently no effective pharmacological interventions for MCI [6].

Kami Guibi-tang (KGT) (*Kamikihito* in Japanese) and Guibi-tang (*Kihito* in Japanese) are traditional herbal formulae commonly used in Kampo and Korean medicine for the treatment of amnesia, loss of appetite, depression, and insomnia. A few experiments and clinical studies have examined how KGT may affect cognitive function, especially in mild AD. KGT improved learning performance in senescence-accelerated mice model [7] and ameliorated impairment of spatial memory induced by scopolamine [8]. It also improved deficits in object recognition memory in 5XFAD AD transgenic mice model [9]. A cross-over clinical trial showed that the Mini-Mental State Examination (MMSE) scores of patients with AD increased significantly during kihito intake period [10].

Since there was no previous data for patients with MCI, we conducted a pilot trial to explore the potential effect of KGT in aMCI patients and examined the feasibility of performing a large-scale trial [11]. Thirty-three aMCI patients took either KGT or placebo granules for 24 weeks, and the general cognition as measured by the Clinical Dementia Rating-Sum of Boxes (CDR-SB) was significantly improved in KGT group compared to the placebo group. The intervention was well tolerated with no severe adverse events. We designed a larger scale randomized clinical trial to validate the findings of our pilot study and further investigate the efficacy and safety of KGT for enhancing cognitive function, including memory performance of aMCI patients. We will also examine the effect of KGT on the progression to AD and investigate the possible underlying mechanisms using neuroimaging modalities, including resting-state functional

magnetic resonance imaging (rs-fMRI) and task-based fMRI, and amyloid blood biomarkers.

Methods

Study design

This trial was designed based on our previous pilot study [11]. It will be a single-center, randomized, double-blind, placebo-controlled clinical trial with a 24-week intervention and a 36th week follow-up examination. It has been initiated at the Kyung Hee University Hospital at Gangdong, Seoul, Korea, in December 2021 and will be continued till May 2025. A flowchart of this trial is shown in Fig. 1. The schedules for enrollment, interventions, and assessments are presented in Table 1.

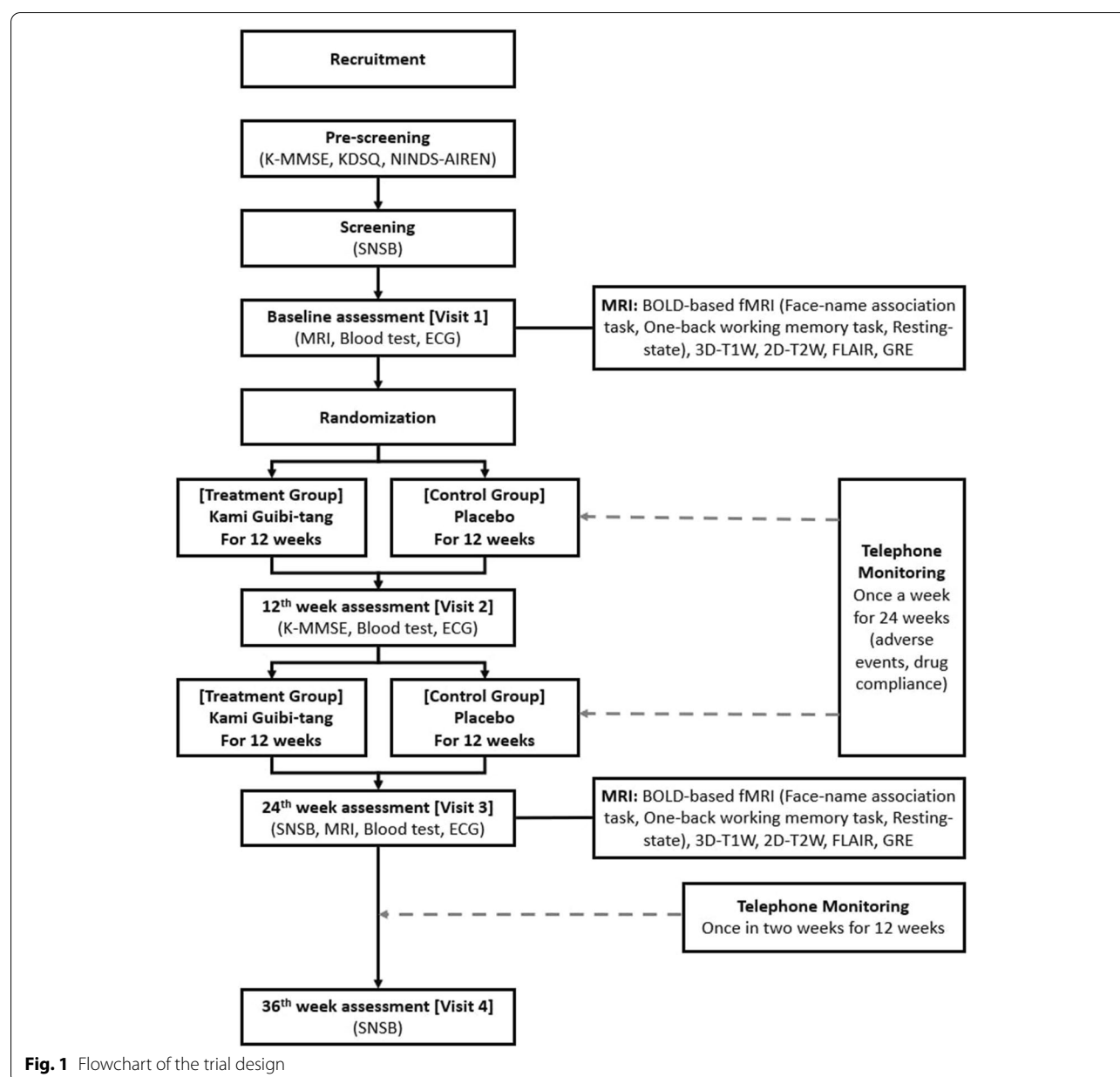
Participants

Inclusion criteria

Participants who meet the following criteria will be included: (1) adults aged 55–90 years, with complaints of impaired memory; (2) objective cognitive decline as measured using the Seoul Neuropsychological Screening Battery (SNSB), with a score of 0.5 on the Clinical Dementia Rating (CDR), 3 on the Global Deterioration Scale (GDS), and a normal score on the Korean MMSE (K-MMSE); (3) diagnosed with amnesic MCI by a neurologist; (4) not taking any medication that could affect cognitive function (e.g., gliatilin, gliatamine, ginexin, tannin, or other psychoactive drugs) within 2 weeks; (5) no change in medication for underlying diseases within 2 weeks, and no expected change in medication during the trial; (6) no difficulty in communication.

Exclusion criteria

Participants who meet any of the following criteria will be excluded: (1) diagnosed with AD according to the criteria of the National Institute of Neurological and Communicative Disorders and Stroke-Alzheimer's Disease and Related Disorders Association (NINCDS-ADRDA); (2) diagnosed with vascular dementia according to the criteria of the National Institute of Neurological Disorders and Stroke-Association Internationale pour la Recherche et l'Enseignement en Neurosciences (NINDS-AIREN); (3) with brain disorders that cause neurologic symptoms, other than cognitive impairment; (4) with other neurodegenerative disorders (e.g., Huntington's disease, Parkinson's disease, Creutzfeldt-Jakob disease and Down's syndrome); (5) cognitive decline due to other diseases (e.g., vitamin deficiency, brain tumor, head






trauma, encephalitis, hypoxic brain damage, neurosyphilis); (6) with history of major depressive disorder; (7) with psychiatric disorders or behavioral problems requiring antipsychotic medication; (8) with history of convulsive disorder, except for febrile convulsions during childhood; (9) with life-threatening or unstable medical conditions; (10) uncontrolled hypertension; (11) with heart or renal diseases; (12) with edema; (13) gastrointestinal symptoms (e.g., diarrhea, nausea, anorexia, abdominal pain); (14) use of medication that may induce myopathy or hypokalemia; (15) with hypersensitivity to ingredients in study medication; (16) abnormal range of liver and

kidney function (serum aspartate aminotransferase/alanine aminotransferase (AST/ALT) levels more than two-fold the upper reference limit, or serum creatinine (Cr) levels more than 10% of the upper reference limit); (17) participating in other clinical trials within 4 weeks; (18) with illiteracy; (19) those who are contraindicated for Brain MRI; (20) any other possible conditions considered inappropriate to participate in the trial.

Drop-out criteria

Participants will be withdrawn from the trial if they meet the following criteria: (1) occurrence of any severe

Table 1 Schedule of enrollment, interventions, and assessments

TIMEPOINT(weeks)	STUDY PERIOD					
	Pre-screening	Screening	Treatment period			Follow-up period
	-2	0	1	12	24	36
ENROLLMENT:						
Eligibility screen	X	X				
K-MMSE only	X			X		
KDSQ	X					
Informed consent		X				
SNSB (including K-MMSE)		X			X	X
NINCDS-ADRDA		X				
NINDS-AIREN		X				
Allocation		X				
INTERVENTION:						
<i>Kami Guibi-tang granules</i>						
<i>Placebo granules</i>						
ASSESSMENT:						
Brain MRI			X		X	
Blood test (HDL, LDL, TG, TFT, VDRL, ammonia)			X			
Blood test (Amyloid-β, CBC D/C, folate, Vitamin B12)			X		X	
Blood test (safety)			X	X	X	
ECG			X		X	
Monitoring of adverse events						

adverse events; (2) voluntary withdrawal from the trial; (3) not following the study protocol (i.e., drug compliance below 80%); (4) use of additional medication to improve cognitive function during the trial; (5) considered unsuitable by the principal investigator; (6) loss of ability to communicate and express their opinions.

Enrollment

We plan to recruit a total of 84 amnesic MCI patients through physician referrals and newspaper

advertisements. Candidates with memory complaints will be screened using the eligibility criteria, and the screening tools including the Korean Dementia Screening Questionnaire (KDSQ) and K-MMSE. SNSB will be conducted for potentially eligible participants, and those who are diagnosed with amnesic MCI will be enrolled. A clinical research coordinator and investigators will provide the participants with a detailed explanation of the study procedures, potential benefits and risks of participation.

Informed consent will be obtained from all participants prior to enrollment.

Allocation and blinding

An independent statistician will generate a random sequence using R Software version 4.1.3. All individuals will be randomly assigned to either KGT or placebo group, in a ratio of 1:1 using a block randomization with a block size of four. The random sequence will be sent to the pharmaceutical company as an encoded file, which will label and package the investigational drugs. Participants will be sequentially assigned and provided with the drug according to the randomization code in the order of enrollment. The participants, clinical psychologists, neuroimaging specialists, a clinical pharmacist, clinical research coordinator (CRC), clinical research associates (CRA), project manager (PM) of contract research organization (CRO), and study investigators will be blinded to treatment allocation until the completion of the study. Only if serious adverse events (SAEs) occur, the cases will be unblinded and the participants will be taken off trial.

Intervention

The participants assigned to intervention group will take KGT granules (3g /1pack) and those assigned to control group will take placebo granules (3g /1pack). KGT is an herbal formula composed of 15 medicinal herbs. The amount and composition of each compound are presented in Table 2. *Dimocarpus Longan*, one of the herbal drugs of KGT, is a subtropical and tropical fruit of the Sapindaceae family. *D. longan* used in this trial was cultivated for medicinal purposes, not harvested from the wild. It is imported for medicinal use, and standardized,

regulated, and quality controlled by the Korean Ministry of Food and Drug Safety (KMFDS) guidelines such as Korean Pharmacopoeia (KP) and Korean Herbal Pharmacopoeia (KHP). KGT will be manufactured by Han Poong Pharmaceutical Co., Ltd. (Jeonju, Korea), certified for Good Manufacturing Practices (GMP). Placebo drugs will be produced by the same manufacturer using the standard method of placebo manufacturing according to the Korean GMP guidelines. Their taste, color, shape, smell, and package will be made similar to KGT granules.

An independent clinical pharmacist will distribute the granules to participants in each group. Participants will be instructed to dissolve the granules in a glass of warm water and take the solution 30 minutes before or between meals, thrice daily. The investigators and CRC will make weekly reminder phone calls to the participants during the intervention period, in order to help them adhere to medication schedule. Participants will be allowed to take drugs for underlying medical conditions during the study period; however, they will not be allowed to take any medicine that may affect cognitive function. They will be required to report all the drugs taken during the study period. The name and dosage of the medication will be recorded in the case report form (CRF). Participants will be asked to return the leftover drugs at each study visit, and the number of returned drugs will be counted for assessing drug compliance. Those who take less than 80% of study medication will be withdrawn from the study.

Outcome

The primary outcome includes changes in cognitive performance after the administration of KGT or placebo granules. SNSB, which is composed of various cognitive

Table 2 Composition of Kami Guibi-tang

Scientific name	Latin name	Amount (g)
<i>Panax ginseng</i> C.A. Meyer	Ginseng Radix	1
<i>Atractylodes macrocephala</i> Koidzumi	Atractylodis Rhizoma Alba	1
<i>Poria cocos</i> Wolf	Poria Sclerotium	1
<i>Astragalus membranaceus</i> Bunge	Astragali Radix	1
<i>Dimocarpus longan</i> Loureiro	Longanae Arillus	1
<i>Zizyphus jujuba</i> Miller var. <i>spinosa</i> Hu ex H.F. Chou	Zizyphi Semen	1
<i>Bupleurum falcatum</i> Linné	Bupleuri Radix	1
<i>Angelica gigas</i> Nakai	Angelicae Gigantis Radix	0.67
<i>Polygala tenuifolia</i> Willdenow	Polygalae Radix	0.67
<i>Gardenia jasminoides</i> Ellis	Gardeniae Fructus	0.67
<i>Paeonia suffruticosa</i> Andrews	Moutan Cortex	0.67
<i>Zizyphus jujuba</i> Miller var. <i>inermis</i> Rehder	Zizyphi Fructus	0.67
<i>Aucklandia lappa</i> Decne.	Aucklandiae Radix	0.33
<i>Glycyrrhiza uralensis</i> Fischer	Glycyrrhizae Radix et Rhizoma	0.33
<i>Zingiber officinale</i> Roscoe	Zingiberis Rhizoma Recens	0.33

tests such as CDR, GDS, and MMSE will be conducted to assess the cognitive function, and changes in SNSB results will be analyzed. The secondary outcomes include the rate of progression to AD at the endpoint, according to NINCDS-ADRDA and CDR-GS score ≥ 1 . In addition, we will measure neuroimaging signals and blood-based biomarkers. Structural MRI and functional MRI (fMRI) will be adopted to observe neuroimaging signal changes. The changes in gray matter volume will be measured using structural MRI. Also, Rs-fMRI and task-based fMRI will be performed to compare the changes in functional connectivity among working memory and default mode networks and to measure the changes in brain activation during the face–name association task and one-back working memory task. Levels of plasma A β 42 and A β 40 will be measured as blood-based biomarkers. The safety outcomes include electrocardiogram (ECG) and blood chemistry (Na, K, Cl, AST, ALT, BUN, Cr, glucose, LDH, CPK).

Assessment

K-MMSE and SNSB

K-MMSE will be performed at the screening visit and at 12th week for evaluating the general cognitive status. It is one of the most widely used screening tests to estimate the cognitive functioning [12]. SNSB-II will be conducted at baseline, 24th week, and 36th week, to measure the effect of KGT on cognitive function. Changes in the mean SNSB scores will be analyzed as a primary outcome. SNSB is a neuropsychological test battery most commonly used in South Korea to estimate global cognitive function. The test is composed of various cognitive subtests that assess five domains: memory, attention, language, visuospatial function, and executive function. It also includes other related tests including CDR, K-MMSE, Korean-Instrumental Activities of Daily Living (K-IADL), Barthel-Activities of Daily Living (BADL), and Short-form Geriatric Depression Scale (SGDS) [13]. We will use a modified version of SNSB for dementia (SNSB-D), to obtain a global cognitive function (GCF) score, which is the sum of all the test scores of five domains. The maximum GCF score is 300 points: 150/300 (50%) for memory, 17/300 (6%) for attention, 27/300 (9%) for language, 36/300 (12%) for visuospatial function, and 70/300 (23%) for frontal/executive function [14]. The detailed contents of SNSB-D are presented in Table 3.

MRI

Brain MRI scans will be conducted at baseline and 24th week using a 3.0T MRI system (Philips Ingenia, Best, The Netherlands) to observe the neurophysiological changes. During the resting acquisition, participants will be asked to be in a supine position, with their head

Table 3 Contents of Seoul Neuropsychological Battery for dementia (SNSB-D)

Domains (total score)	Subtests	Maximum points
Attention (17)	Digit span forward	9
	Digit span backward	8
Language & related function (27)	K-BNT	15
	Calculation	12
Visuospatial function (36)	RCFT copy	36
Memory (150)	Orientation	6
	SVLT free/delayed recall	48
	SVLT recognition	12
	RCFT free/delayed recall	72
	RCFT recognition	12
Frontal/Executive function (70)	Motor impersistence	3
	Contrasting program	3
	Go-no-go test	3
	Fist-edge-palm	3
	Luria loop	3
	Categoric word generation	20
	Phonemic word generation	15
	Stroop test-color reading	20
GCF score		300

K-BNT Korean short version of the Boston Naming Test, RCFT Rey Complex Figure Test, SVLT Seoul Verbal Learning Test, GCF Global cognitive function

positioned in the 32-channel head coil, fixed by soft foam pads to minimize the head movement, and to remain awake with their eyes closed. Task-based fMRI data will be obtained while participants perform a face–name association task and one-back working memory task. Blood oxygenation level-dependent (BOLD) data will be acquired using a T2-weighted gradient echo, echo-planar imaging (EPI) sequence with the following acquisition parameters: repetition time (T_R) = 2000 ms; echo time (T_E) = 30 ms; flip angle (FA) = 70°; field of view (FOV) = 210 × 210 × 96 mm, matrix = 70 × 70; number of slices = 32; slice thickness = 3 mm; slice gap = 0 mm; multi-band factor = 2; SENSE factor = 2; voxels = 3 × 3 × 4 mm³. A sagittal structural 3D T1-weighted (3D T1W) image will be acquired before and after contrast injection with a turbo fast field echo sequence, similar to the magnetization-prepared rapid acquisition of the gradient echo (MPRAGE) sequence with the following acquisition parameters: repetition time (T_R) = 8.1 ms, echo time (T_E) = 3.7 ms, flip angle (FA) = 8°, field-of-view (FOV) = 236 × 236 mm², and voxel size = 1 × 1 × 1 mm³.

Blood testing

Plasma A β 42 and A β 40 levels will be measured at baseline and at 24th week to examine the disease-modifying effects, since the ratio of A β 42/A β 40 reflects the AD

pathology [15, 16] and associated neurodegeneration, and is related to cognitive impairment [17]. Changes in the ratio of plasma A β 42/A β 40 will be compared between the groups. A ratio less than 0.1218 is defined as positive amyloidosis; therefore, the conversion rate to a positive A β 42/A β 40 ratio will also be compared. CBC D/C, folate, and vitamin B12 levels will be measured at baseline and 24th week. HDL, LDL, TG, TFT, VDRL, and ammonia levels will be assessed at 1st week.

Safety assessment

ECG and blood tests will be conducted to examine the safety outcomes. ECG will be conducted at baseline and 24th week. Blood levels of Na, K, Cl, AST, ALT, BUN, Cr, glucose, LDH, CPK will be measured at baseline, 12th, and 24th week. Vital signs will be checked at each visit. We will closely monitor any abnormal findings in vital signs, blood tests, and ECG.

Adverse events (AEs)

Adverse events will be monitored at each visit, and by telephone, weekly during the intervention and biweekly for 12 weeks after the intervention. All AEs will be assessed for causality and severity, and the details of each AE will be recorded in CRF. If a serious adverse event (SAE) occurs, the participation will be terminated, and the institutional review board (IRB) will be reported as soon as possible. All AEs will be monitored until they stabilize.

Data management and monitoring

Data will be entered into the electronic case record form (eCRF) by CRC and the investigators. The entered data will be monitored by CRAs, through the process of source data validation (SDV). Only the monitoring agent and the investigators will have access to the dataset. The eCRF files will be stored in the password-secured database called MyTrial. All procedures will comply with the confidentiality standards for medical data. All documents and collected data will be kept for 3 years after completion of the study, after which they will be destroyed. The data will be managed by a data management project manager (DMPM) and a data management associate (DMA), according to standard operating procedures (SOPs). The trial will be monitored by a monitoring committee which is composed of PM, CRA and clinical research manager (CRM). Auditing will be conducted by the Korean Ministry of Food and Drug Safety and IRB.

Statistics

Sample size calculation

The primary outcome of interest in this study is the change in the total SNSB-D score between baseline and post-intervention. The calculation of sample size is based

on a superiority test, as the aim of this study is to show that KGT is superior to placebo. Our pilot study of aMCI patients treated with KGT showed that the change in the total SNSB-D score was +22.47, compared to +8.36 in the placebo group. The calculated effect size (Cohen's *d*) was 0.70. Using G*Power software with a power of 0.80 and a two-sided type I error of 0.05, the calculated total sample size for the current study involves 66 participants, with 33 in each group. The dropout rate was 10% (3 of 33 participants) in the previous study; however, since the current study will take a longer follow-up period, we expect the dropout rate to be 20%. We plan to recruit a total of 84 participants for this RCT (42 participants in each group).

Data analyses

An independent professional statistician, who will also be blinded to the allocation, will perform data analyses using SPSS 20.0 software (IBM, Armonk, NY, USA). Efficacy analyses will be performed using the modified intention-to-treat (mITT) and per-protocol (PP) principles. The mITT population will include participants who have completed at least one examination since the beginning of the intervention. The PP population will include participants who will adhere to the trial protocol and undergo all examinations. Missing data will be adjusted using the last-observation-carried-forward (LOCF) imputation method. A safety test will be performed using the ITT principle. The ITT population will include any participants who will take at least one pack of drugs after randomization. To analyze the efficacy outcome and continuous demographic variables, we will perform the Shapiro-Wilk test to confirm the normality of the data distribution. To analyze the fMRI measures and plasma amyloid beta levels, the paired *t*-test will be used for intra-group comparisons and an independent *t*-test will be used for intergroup comparisons, for normally distributed data. Wilcoxon's signed rank test will be used for intra-group comparisons and the Mann-Whitney U test for intergroup comparisons of non-normally distributed data. To analyze the scores of the neuropsychological test battery, repeated measures of analysis of variance will be used for parametric data, and the Friedman test for non-parametric data. Categorical demographic variables, conversion to normal cognition or dementia, conversion to positive plasma A β 42/A β 40 ratio (<0.1218), and the incidence of AEs between the groups will be analyzed using the Pearson's chi-square (χ^2) test or Fisher's exact test. Continuous demographic variables will be analyzed using the *t*-test or Wilcoxon signed-rank test. All statistical analyses will be two-tailed, and the significance level will be set at $p < 0.05$.

Discussion

This trial was designed based on our previous pilot study. To the best of our knowledge, it is the first confirmatory randomized clinical trial to evaluate the effect of KGT on cognitive function in aMCI patients.

We examined the feasibility of the trial process and the acceptability of KGT treatment in our previous study. Since the results showed a significant improvement in the CDR-SB score in the KGT group, the same neuropsychological test battery, including CDR, was selected as the primary outcome. Moreover, we observed high adherence and drug compliance, with 10% dropout rate. No serious safety concerns were reported.

Several improvements were considered in the planning of the current trial. First, as with most pilot studies, the relatively small sample size limited the statistical power and generalizability. Therefore, we will include a larger sample size in this trial, as calculated based on the results of our pilot trial. Second, there was no follow-up examination of cognitive function after completing the intervention in our previous trial, so the long-term effects of KGT could not be examined. Therefore, we will conduct a follow-up neuropsychological test 12 weeks after completing the treatment and observe any occurrence of AEs for 12 weeks after the treatment, compared to 4 weeks of post-intervention monitoring in the prior study.

The advantages of this trial include using extensive assessment tools to evaluate the outcomes. First, as in the pilot study, we will use SNSB, which is the full neuropsychological battery, which is composed of comprehensive and diverse cognitive tests, in order to sensitively capture the changes in cognitive function [13]. This is because the instruments frequently used in previous studies, such as MMSE and Alzheimer's Disease Assessment Scale-Cognitive subscale, lack sensitivity in detecting mild degrees of cognitive decline, which lead to ceiling effects [18].

Next, we will perform multimodal MRI scans in this study, including structural MRI and resting-state and task-evoked functional MRIs. Structural MRI scan of brain atrophy are the most widely accepted markers of AD progression [19]. A decline in hippocampal volume has consistently been related to memory loss in the AD continuum [20]. Since fMRI, which is an indirect measure of brain activity, is useful in the detecting early alterations in brain function, it might be valuable for evaluating the physiological changes over a short time interval [21]. We will investigate the effects of KGT on brain function using both task-based and task-free (resting-state) approaches. Rs-fMRI studies have shown that the progression of memory decline in aMCI is associated with a decline in functional connectivity in DMN regions, which include brain regions related to cognitive function, such as the hippocampus and medial frontal

lobe [22]. For task-based fMRI, we will adopt two types of memory paradigms: the face-name association task and the one-back working memory task. By employing cognitive tasks, the fMRI measure will provide information on the changes in brain activity while performing specific activities that mimic the actual difficulties occurring in daily life [21]. Various neuroimaging modalities will be helpful for evaluating the neural underpinning of the effect of KGT.

We will also observe changes in blood-based neuro-pathological biomarkers, including the plasma levels of A β 42, which are proposed to reflect the AD pathology and associated neurodegeneration [15–17]. Plasma A β levels are correlated with the cerebrospinal fluid (CSF) A β levels and A β deposition in the brain [23]. Low plasma A β 42/40 ratios are associated with an increased risk of dementia [24] and greater cognitive decline [25]. We will investigate whether KGT shows any disease-modifying effect via the plasma A β 42/40 ratio, instead of using CSF biomarkers, which is a costly and invasive process. In addition, plasma A β protein levels may provide information about the etiology of MCI.

Despite the strengths of our study, there are some limitations to our protocol. Although we plan to conduct follow-up examinations at the 36th week, the treatment and follow-up periods are relatively short considering the nature of the disease, which is inevitable due to the limited study period. Nevertheless, the 24-week intervention indicated an improvement in cognitive function in our pilot study, and this issue could be resolved by incorporating fMRI measures that can help detect even subtle changes over a short period of treatment. Next, the signals that will be used in this trial, especially fMRI, do not yet provide a reliable AD biomarker or tracking tool due to inconsistent findings of previous studies. However, we anticipate that using a combination of multimodal MRI scans, blood biomarkers, and extensive neuropsychological tests may aid in the better understanding of the effects of treatment.

In summary, the findings of this trial will provide confirmatory evidence for the therapeutic effects of KGT in patients with aMCI. This study will also give insights into the mechanisms underlying the effects of KGT via various biomarkers.

Trial status

This study began patient recruitment on February 4th, 2022.

Abbreviations

aMCI: Amnesic mild cognitive impairment; AD: Alzheimer's disease; KGT: Kami Guibi-tang; SNSB: Seoul Neuropsychological Screening Battery; MRI: Magnetic resonance imaging; rs-fMRI: Resting-state functional MRI; A β : Amyloid- β ; ECG:

Electrocardiogram; MMSE: Mini-Mental State Examination; CDR-SB: Clinical Dementia Rating-Sum of Boxes; GDS: Global Deterioration Scale; CDR: Clinical Dementia Rating; K-MMSE: Korean Version of Mini-Mental State Examination; NINCDS-ADRDA: National Institute of Neurological and Communicative Disorders and Stroke-Alzheimer's Disease and Related Disorders Association; NINDS-AIREN: National Institute of Neurological Disorders and Stroke-Association Internationale pour la Recherche et l'Enseignement en Neurosciences; AST: Aspartate aminotransferase; ALT: Alanine aminotransferase; Cr: Creatinine; KDSQ: Korean Dementia Screening Questionnaire; SAE: Serious adverse event; GMP: Good Manufacturing Practice; CRF: Case record form; CDR-GS: Clinical Dementia Rating-Global Score; fMRI: Functional MRI; BUN: Blood urea nitrogen; Na: Sodium; K: Potassium; Cl: Chloride; LDH: Lactate dehydrogenase; CPK: Creatine phosphokinase; BADL: Barthel-Activities of Daily Living; SGDS: Short-form Geriatric Depression Scale; SNSB-D: SNSB for dementia; GCF: Global cognitive function; BOLD: Blood oxygenation level-dependent; EPI: Echo-planar imaging; T_R: Repetition time; T_E: Echo time; FA: Flip angle; FOV: Field of view; 3D T1W: Structural 3D T1-weighted; MPRAGE: Magnetization-prepared rapid acquisition of the gradient echo; CBC D/C: Complete blood count & differential count; HDL: High-density lipoprotein; LDL: Low-density lipoprotein; TG: Triglyceride; TFT: Thyroid Function Test; VDRL: Venereal Disease Research Laboratory; AE: Adverse event; IRB: Institutional review board; mITT: Modified intention-to-treat; PP: Per-protocol; LOCF: Last-observation-carried-forward; ITT: Intention-to-treat; ADAS-cog: Alzheimer's Disease Assessment Scale-Cognitive subscale; CSF: Cerebrospinal fluid.

Supplementary Information

The online version contains supplementary material available at <https://doi.org/10.1186/s12906-022-03805-9>.

Additional file 1. The SPIRIT 2013 checklist.

Additional file 2. Consent Form (English version).

Acknowledgements

This study was supported by the Convergence of Conventional Medicine and Traditional Korean Medicine R&D program.

Authors' contributions

JMP, GHJ and SWK conceived and designed the study. SUP, WSJ, SKM, and CNK have drafted and revised the protocol, and HYS wrote the final manuscript. TBY and HMH will participate in recruitment and enrollment as well as data acquisition. GHJ created fMRI processing software and will monitor the acquisition of MRI data. HYS and SYC will analyze and interpret the data. JMP will supervise the overall trial process. All authors have read the manuscript and approved the publication of this protocol.

Funding

This research was supported by a grant from the Korea Health Technology R&D Project through the Korea Health Industry Development Institute (KHIDI), funded by the Ministry of Health & Welfare, Republic of Korea (grant number: HI21C2516). The funder had no role in study design, data collection and analysis, interpretation, writing or decision to submit for publication.

Availability of data and materials

Not applicable.

Declarations

Ethics approval and consent to participate

This trial will be performed in accordance with the Declaration of Helsinki and Korean Good Clinical Practice Guidelines. The protocol of this trial was approved by the Institutional Review Board of Kyung Hee University Hospital at Gangdong (KHNM-C-OH-IRB 2021-12-004) and the Korean Ministry of Food and Drug Safety (32756) and is registered at the Korean Clinical Trial Registry (<http://cris.nih.go.kr/KCT0007039>). The current protocol version (3.1) was approved on March 29th, 2022 and developed according to the Standard Protocol Items: Recommendations for Interventional Trials (SPIRIT) Statement (see Additional file 1). All items were drawn from the World Health Organization

Trial Registration Dataset. All modifications to the protocol will be approved by the institutional review board before implementation. Signed informed consent will be obtained from all qualified participants by a clinical research coordinator and/or study investigators. Participation in this study is voluntary, and participants can withdraw from the study at any given point.

Consent for publication

Not applicable.

Competing interests

The authors have no competing interests to declare.

Author details

¹Department of Internal Korean Medicine, Korean Medicine Center, CHA University Bundang Medical Center, 59, Yatap-ro, Bundang-gu, Seongnam-si, Gyeonggi-do 13496, Republic of Korea. ²Department of Clinical Korean Medicine, Graduate School, Kyung Hee University, 26 Kyungheeda-ro, Dongdaemun-gu, Seoul 02447, Republic of Korea. ³Stroke and Neurological Disorders Center, Kyung Hee University Hospital at Gangdong, 892, Dongnam-ro, Gangdong-gu, Seoul 05278, Republic of Korea. ⁴Department of Radiology, Kyung Hee University Hospital at Gangdong, College of Medicine, Kyung Hee University, 892, Dongnam-ro, Gangdong-gu, Seoul 05278, Republic of Korea. ⁵Department of Cardiology and Neurology, College of Korean Medicine, Kyung Hee University, 26 Kyungheeda-ro, Dongdaemun-gu, Seoul 02447, Republic of Korea.

Received: 25 April 2022 Accepted: 21 November 2022

Published online: 02 December 2022

References

- Petersen RC, Caracciolo B, Brayne C, et al. Mild cognitive impairment: a concept in evolution. *J Intern Med*. 2014;275(3):214–28.
- Mitchell AJ, Shiri-Feshki M. Rate of progression of mild cognitive impairment to dementia—meta-analysis of 41 robust inception cohort studies. *Acta Psychiatr Scand*. 2009;119:252–65.
- Hughes TF, Snitz BE, Ganguli M. Should mild cognitive impairment be subtyped? *Curr Opin Psychiatry*. 2011;24(3):237–42.
- Fischer P, Jungwirth S, Zehetmayer S, et al. Conversion from subtypes of mild cognitive impairment. *Neurology*. 2007;23:288–91.
- A. s. Association. Alzheimer's disease facts and figures; 2017. p. 2017.
- Kasper S, Bancher C, Eckert A, et al. Management of mild cognitive impairment (MCI): the need for national and international guidelines. *World J Biol Psychiatry*. 2020;21(8):579–94.
- Nishizawa K, Saito H, Nishiyama N. Effects of Kamikihito, a traditional Chinese medicine, on passive and conditioned avoidance performance impairment in senescence accelerated mouse (SAM). *Jpn J Pharmacol*. 1990;54:375–82.
- Egashira N, Manome N, Kurauchi K, et al. Kamikihito, a Kampo medicine, ameliorates impairment of spatial memory in rats. *Phytother Res*. 2007;21:126–9.
- Tohda C, Nakada R, Urano T, et al. Kamikihito (KKT) rescues axonal and synaptic degeneration associated with memory impairment in a mouse model of Alzheimer's disease, 5XFAD. *Int J Neurosci*. 2011;121:641–8.
- Higashi K, Rakugi H, Yu H, et al. Effect of kihito extract granules on cognitive function in patients with Alzheimer's-type dementia. *Geriatr Gerontol Int*. 2007;7:245–51.
- Shin HY, Kim HR, Jahng GH, et al. Efficacy and safety of Kami-guibitang for mild cognitive impairment: a pilot, randomized, double-blind, placebo-controlled trial. *BMC Complement Med Ther*. 2021;21(1):251.
- Folstein MF, Folstein SE, McHugh PR. "Mini-mental state": a practical method for grading the cognitive state of patients for the clinician. *J Psychiatr Res*. 1975;12:189–98.
- Kang Y, Na DL. Seoul neuropsychological screening battery (SNSB). Seoul: Human Brain Research & Consulting Co; 2003.
- Ahn H-J, Chin J, Park A, et al. Seoul neuropsychological screening battery-dementia version (SNSB-D): a useful tool for assessing and monitoring cognitive impairments in dementia Patients. *J Korean Med Sci*. 2010;25:1071–6.

15. Ovod V, Ramsey KN, Mawuenyega KG, et al. Amyloid beta concentrations and stable isotope labeling kinetics of human plasma specific to central nervous system amyloidosis. *Alzheimers Dement*. 2017;13(8):841–9.
16. Nakamura A, Kaneko N, Villemagne VL, et al. High performance plasma amyloid-beta biomarkers for Alzheimer's disease. *Nature*. 2018;554(7691):249–54.
17. Janelidze S, Stomrud E, Palmqvist S, et al. Plasma beta-amyloid in Alzheimer's disease and vascular disease. *Sci Rep*. 2016;6(26801):26801.
18. Kim J, Na HK, Byun J, et al. Tracking cognitive decline in amnesic mild cognitive impairment and early-stage Alzheimer dementia: Mini-mental state examination versus neuropsychological battery. *Dement Geriatr Cogn Disord*. 2017;44:1–2.
19. Kantarci K, Jack C Jr. Quantitative magnetic resonance techniques as surrogate markers in Alzheimer's disease. *NeuroRx J Am Soc Exp Neurotherap*. 2004;1:196–205.
20. Bayram E, Caldwell JZK, Banks SJ. Current understanding of magnetic resonance imaging biomarkers and memory in Alzheimer's disease. *Alzheimers Dement (N Y)*. 2018;4:395–413.
21. Canu E, Sarasso E, Filippi M, et al. Effects of pharmacological and non-pharmacological treatments on brain functional magnetic resonance imaging in Alzheimer's disease and mild cognitive impairment: a critical review. *Alzheimers Res Ther*. 2018;10(1):21.
22. Bai F, Watson DR, Shi Y, et al. Specifically progressive deficits of brain functional marker in amnesic type mild cognitive impairment. *PLoS One*. 2011;6(9).
23. Verberk IMW, Slot RE, Verfaillie SCJ, et al. Plasma amyloid as Pre-screener for the earliest Alzheimer pathological changes. *Ann Neurol*. 2018;84(5):648–58.
24. Chouraki V, Beiser A, Younkin L, et al. Plasma amyloid-beta and risk of Alzheimer's disease in the Framingham heart study. *Alzheimers Dement*. 2015;11:249–57.
25. Yaffe K, Weston A, Graff-Radford NR, et al. Association of plasma beta-amyloid level and cognitive reserve with subsequent cognitive decline. *JAMA*. 2011;305(3):261–6.

Publisher's Note

Springer Nature remains neutral with regard to jurisdictional claims in published maps and institutional affiliations.

Ready to submit your research? Choose BMC and benefit from:

- fast, convenient online submission
- thorough peer review by experienced researchers in your field
- rapid publication on acceptance
- support for research data, including large and complex data types
- gold Open Access which fosters wider collaboration and increased citations
- maximum visibility for your research: over 100M website views per year

At BMC, research is always in progress.

Learn more biomedcentral.com/submissions

