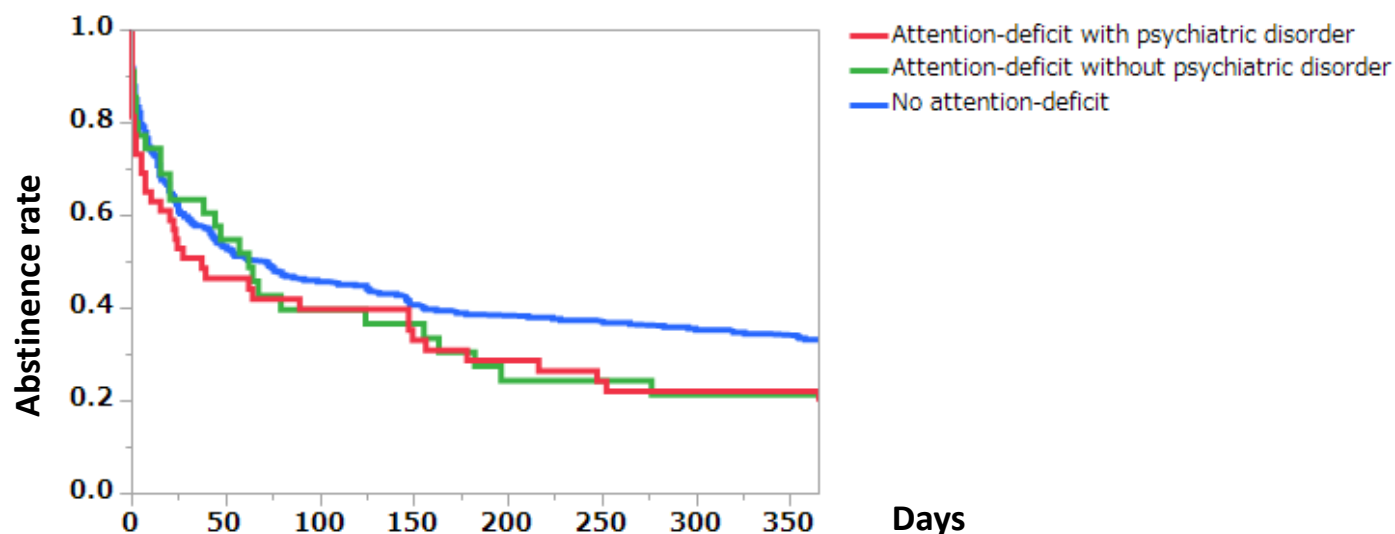
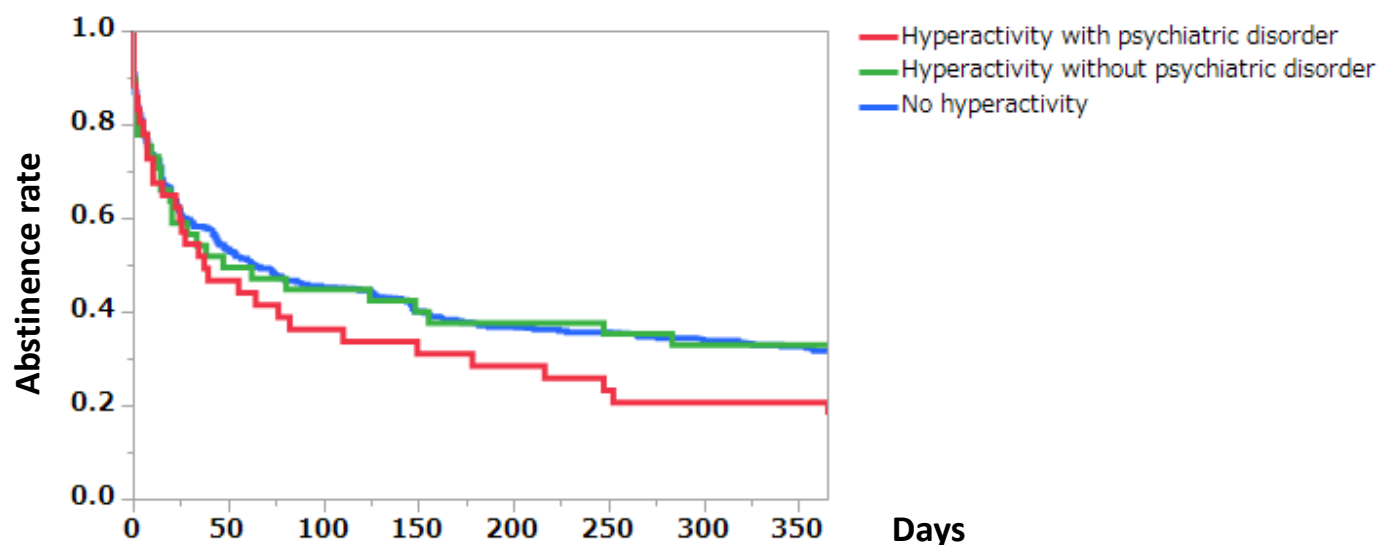


## A Attention-deficit with or without any psychiatric disorder



## B Hyperactivity / impulsivity with or without any psychiatric disorder



Supplementary Figure 2.

Effects of any comorbid psychiatric disorder on the abstinence rates of the subjects with ADHD characteristics assessed using the SSAGA-II

Graph A: The three groups were compared by the presence or absence of attention-deficit and comorbid psychiatric disorder ( $p = 0.0830$ , log-rank test;  $p = 0.0661$ , Wilcoxon test). The numbers of subjects with attention-deficit according to the presence and the absence of comorbid psychiatric disorders were 70 and 45, while the number of subjects without attention-deficit was 430.

Graph B: The three groups were compared by the presence or absence of hyperactivity / impulsivity and comorbid psychiatric disorder ( $p = 0.3222$ , log-rank test;  $p = 0.5659$ , Wilcoxon test). The numbers of subjects with hyperactivity / impulsivity according to the presence and the absence of comorbid psychiatric disorders were 52 and 49, while the number of subjects without hyperactivity / impulsivity was 441.