

REGULATION OF ERA-DEPENDENT BREAST CANCER METASTASIS BY A MIR-29A SIGNALING

Jinhui Lü^{1†}, Qian Zhao^{1†}, Yuefan Guo¹, Danni Li¹, Heying Xie^{1,2}, Cuicui Liu³, Xin Hu³, Suling Liu³, Zhaoyuan Hou⁴, Xunbin wei⁴, Deyou Zheng⁵, Richard G. Pestell^{6,7} and Zuoren Yu^{1*}

Supplemental Figure Legends

Figure S1: Quantitative validation of miR-29a knockdown in MDA-MB-231 (A) and MCF-10A-SRC (B) cells. Data are presented as the mean \pm SEM (n=3). **p<0.01.

Figure S2: Overexpression of miR-29a promoted cell migration and invasion, and induced EMT in MDA-MB-231 cells. A: Quantitative validation of miR-29a overexpression in MDA-MB-231 cells. B, C: Wound healing assay (B) and Transwell assay (C) indicated promotion of cell migration and invasion in miR-29a-overexpressing MDA-MB-231 cells. D: Induced expression of EMT marker genes vimentin, fibronectin and snail in miR-29a-overexpressing MDA-MB-231 cells. Data are presented as the mean \pm SEM (n=3). **p<0.01.

Figure S3: Overexpression of miR-29a promoted cell migration and invasion, and induced EMT in MCF-10A-SRC cells. A: Quantitative validation of miR-29a overexpression in MCF-10A-SRC cells. B, C: Wound healing assay (B) and Transwell assay (C) indicated promotion of cell migration and invasion in miR-29a-overexpressing MCF-10A-SRC cells. D: Induced expression of EMT marker genes vimentin, fibronectin and snail in miR-29a-overexpressing MCF-10A-SRC cells. Data are presented as the mean \pm SEM (n=3). **p<0.01.

Figure S4: Quantitative validation of miR-29a overexpression in MCF-7 cells. Data are presented as the mean \pm SEM (n=3). **p<0.01.

Figure S5: Image and weight of the mammary tumors derived from mice transplanted with MCF-10A-SRC cells with or without overexpression of miR-29a.

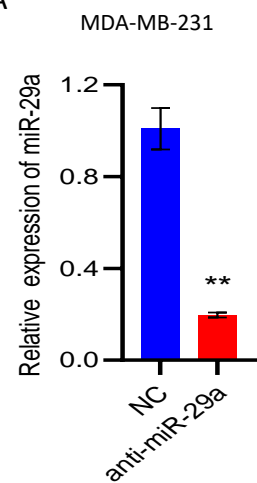
Figure S6: Higher levels of pten in ER α + breast cancer tumors (n=808) than that in ER α - ones (n=238).

Figure S7: Correlations between miR-29a, pten and ER α in different stages of breast cancer patients. A: Increasing trend of miR-29a in expression in ER α - breast cancer patients while decreasing trend in ER α + patients from early stage to late stage. B: Pten showed opposite trends with miR-29a.

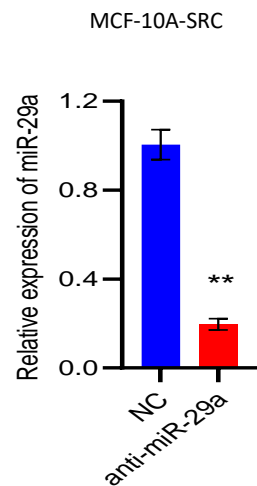
Figure S8: Image and weight of the mammary tumors from the mice treated with miR-29a inhibitor or control.

Supplemental Figure S1

A

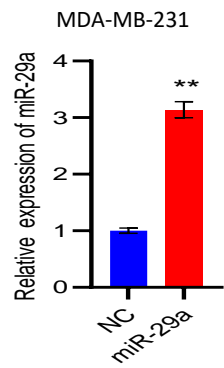


B

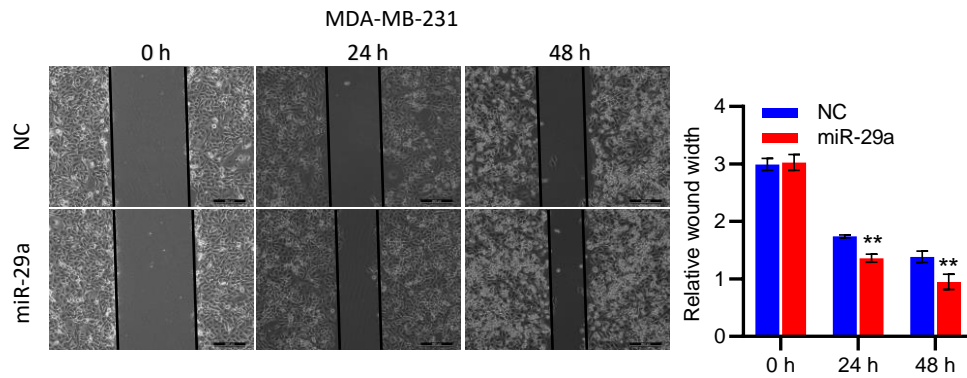


Supplemental Figure S2

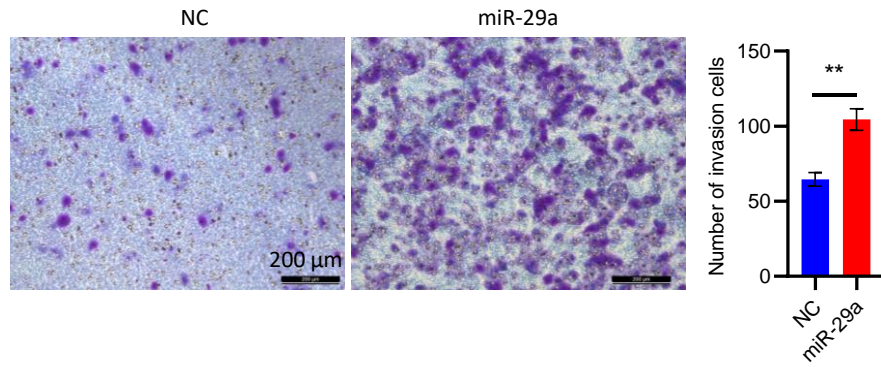
A



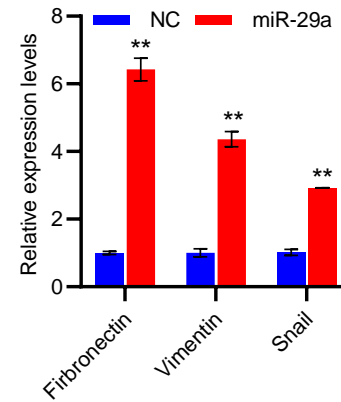
B



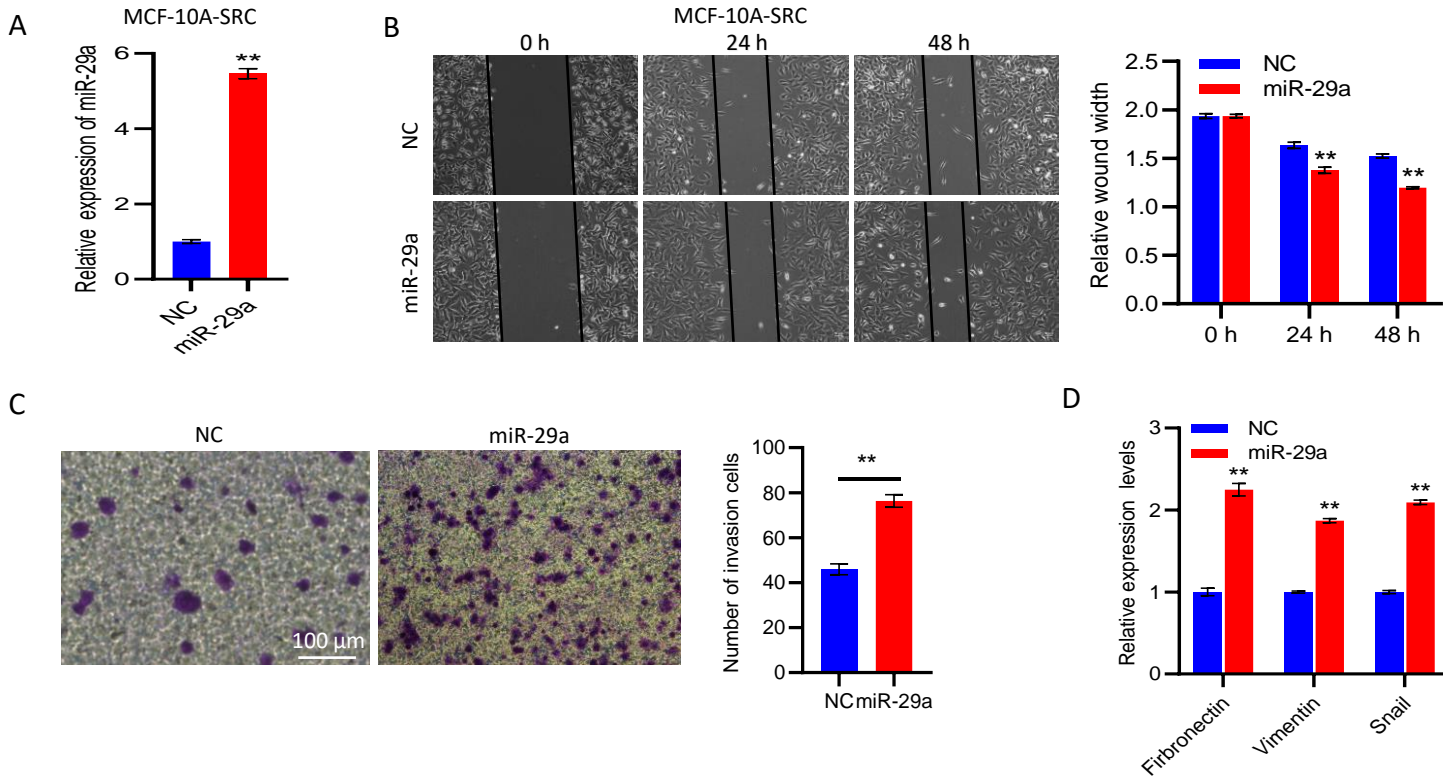
C



D

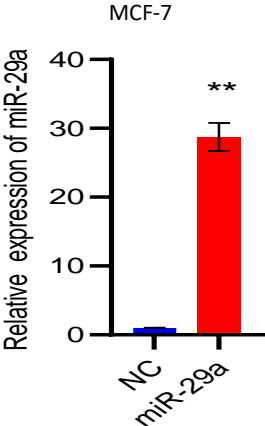


Supplemental Figure S3



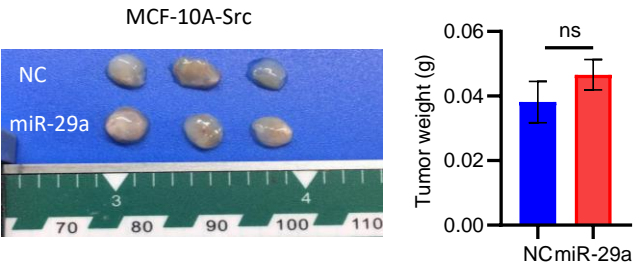
Supplemental Figure S4

A

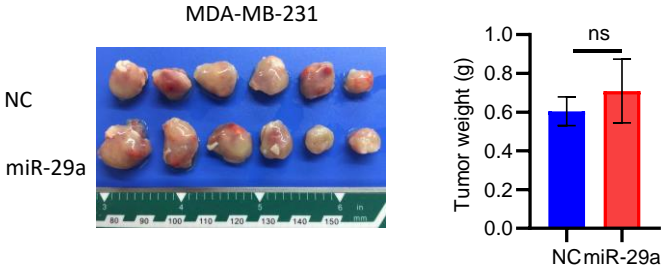


Supplemental Figure S5

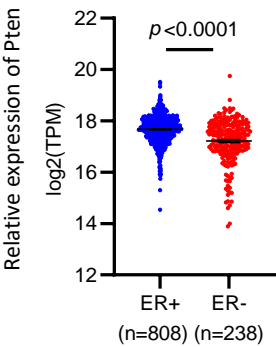
A



B

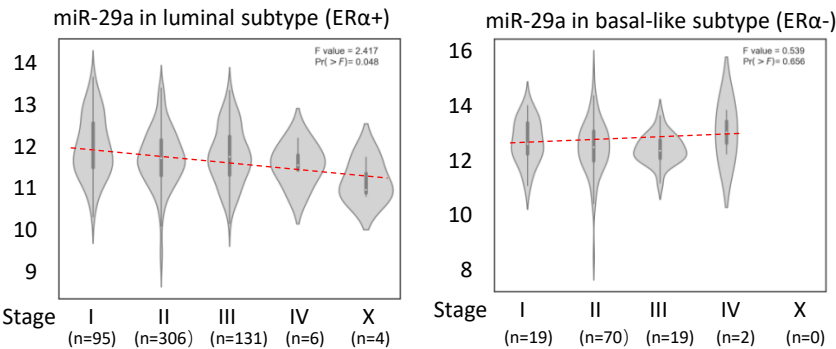


Supplemental Figure S6

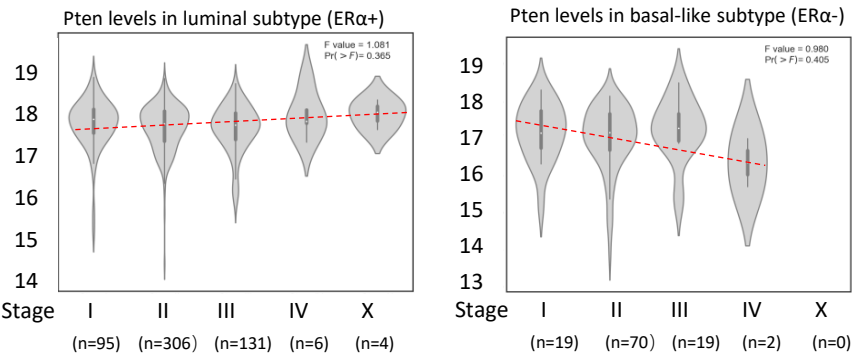


Supplemental Figure S7

A



B



Supplemental Figure S8

