

## BRIEF CONCLUSIVE REPORT

# TRB sequences targeting ORF1a/b are associated with disease severity in hospitalized COVID-19 patients

Jorn L.J.C. Assmann<sup>1,??</sup> | P. Martijn Koliijn<sup>1,??</sup> | Benjamin Schrijver<sup>1,??</sup> | Adriaan J. van Gammeren<sup>2</sup> | Daan W. Loth<sup>3</sup> | Ton A.A.M. Ermens<sup>2</sup> | Willem A. Dik<sup>1</sup> | Vincent H.J. van der Velden<sup>1</sup> | Anton W. Langerak<sup>1</sup>

<sup>1</sup> Department of Immunology, Laboratory Medical Immunology, Erasmus MC University Medical Center, Rotterdam, The Netherlands

<sup>2</sup> Department of Clinical Chemistry and Hematology, Amphia Hospital, Breda, The Netherlands

<sup>3</sup> Department of Pulmonology, Amphia Hospital, Breda, The Netherlands

## Correspondence

Anton W. Langerak, Department of Immunology, Laboratory Medical Immunology, Erasmus MC University Medical Center, PO Box 2040, 3000 CA, Rotterdam, The Netherlands.  
Email: [a.langerak@erasmusmc.nl](mailto:a.langerak@erasmusmc.nl)

Jorn L.J.C. Assmann, P. Martijn Koliijn and Benjamin Schrijver are co-first author

Anton W. Langerak and Vincent H.J. van der Velden are co-last author

## Abstract

The potential protective or pathogenic role of the adaptive immune response to SARS-CoV-2 infection has been vigorously debated. While COVID-19 patients consistently generate a T lymphocyte response to SARS-CoV-2 antigens, evidence of significant immune dysregulation in these patients continues to accumulate. In this study, next generation sequencing of the T cell receptor beta chain (TRB) repertoire was conducted in hospitalized COVID-19 patients to determine if immunogenetic differences of the TRB repertoire contribute to disease course severity. Clustering of highly similar TRB CDR3 amino acid sequences across COVID-19 patients yielded 781 shared TRB sequences. The TRB sequences were then filtered for known associations with common diseases such as EBV and CMV. The remaining sequences were cross-referenced to a publicly accessible dataset that mapped COVID-19 specific TCRs to the SARS-CoV-2 genome. We identified 158 SARS-CoV-2 specific TRB sequences belonging to 134 clusters in our COVID-19 patients. Next, we investigated 113 SARS-CoV-2 specific clusters binding only one peptide target in relation to disease course. Distinct skewing of SARS-CoV-2 specific TRB sequences toward the nonstructural proteins (NSPs) encoded within ORF1a/b of the SARS-CoV-2 genome was observed in clusters associated with critical disease course when compared to COVID-19 clusters associated with a severe disease course. These data imply that T-lymphocyte reactivity towards peptides from NSPs of SARS-CoV-2 may not constitute an effective adaptive immune response and thus may negatively affect disease severity.

## KEYWORDS

COVID-19, immunogenetics, SARS-CoV-2, TCR sequencing

## 1 | INTRODUCTION

Clinical features of Coronavirus disease 2019 (COVID-19),<sup>1</sup> caused by SARS-CoV-2 infection, can range from mild disease to severe illness with acute hypoxemic respiratory failure requiring intensive care unit treatment,<sup>2,3</sup> and potentially mechanical ventilation.<sup>4</sup>

The potential protective or pathogenic role of the adaptive immune response to SARS-CoV-2 has been vigorously debated. COVID-19 patients have been reported to consistently generate a substantial T lymphocyte response against antigens derived from various SARS-CoV-2 proteins.<sup>5</sup> Nevertheless, evidence of immune dysregulation in COVID-19 is accumulating, including

This is an open access article under the terms of the [Creative Commons Attribution-NonCommercial-NoDerivs](https://creativecommons.org/licenses/by-nc-nd/4.0/) License, which permits use and distribution in any medium, provided the original work is properly cited, the use is non-commercial and no modifications or adaptations are made.

© 2021 The Authors. *Journal of Leukocyte Biology* published by Wiley Periodicals LLC on behalf of Society for Leukocyte Biology

reduced peripheral T-lymphocyte numbers, an exaggerated and/or prolonged inflammatory response, and T-lymphocytes displaying characteristics of exhaustion.<sup>6,7,8</sup> The complexity of the growing evidence underlines the importance of the cellular immune response in COVID-19, alongside the established role of the humoral response.<sup>9,10,11,12</sup>

The T-cell receptor beta (TRB) repertoire is tremendously diverse. V-D-J recombination can theoretically result in the formation of  $10^{12}$  TCRs, allowing recognition of essentially all peptide antigens presented by human leukocyte antigen (HLA) molecules.<sup>13</sup> The TRB chain is most important in determining TCR diversity, the CDR3 region in particular is highly variable and heavily involved in binding to peptide HLA complexes. Accordingly, the CDR3 region of TRB sequences can be considered a unique barcode for T-lymphocytes targeting a particular antigen.<sup>14</sup>

Upon initiating a cellular immune response, T-lymphocytes undergo clonal expansion,<sup>15</sup> which might be represented through a decreased diversity of the TRB gene repertoire and/or appearance of epitope-specific (e.g., COVID-19 specific) clonotypes.<sup>16</sup> Clonotypes are mostly defined as sequences acquired by usage of the same V-, D-, and J-gene and identical CDR3 region, and can be readily identified by next-generation sequencing (NGS). However, it has been shown that epitope-specific TRBs often share conserved CDR3 features, without being fully identical. To this extent, epitope-specific TRBs often form clusters of clonotypes that share similar sequence features and therefore CDR3 regions.<sup>2</sup>

Until now, studies regarding the TRB repertoire in COVID-19 patients were largely descriptive<sup>17,18</sup> and a detailed analysis of the dynamics of the TRB repertoire in relation to disease course (i.e., severe vs. critical disease) has, to our knowledge, not been performed. We hypothesize that immunogenetic differences in the TRB repertoire may contribute to a severe (hospitalized) vs critical (ICU and/or death) disease course and that SARS-CoV-2 epitope-specific TRBs directed towards peptides from nonstructural proteins might be involved in the defective immune response that might lead to critical disease outcome. To test this hypothesis, we employed NGS of the TRB repertoire and characterized TRB sequences of interest which have highly similar TRB CDR3 amino acid sequences derived from TRB sequences enhanced in COVID-19 patients. These sequences were clustered using the TEIRESIAS algorithm. To determine which of the enhanced sequences in COVID-19 patients were SARS-CoV-2 epitope-specific, we utilized publicly available datasets of TRB-antigen associations.<sup>19,20</sup>

## 2 | RESULTS AND DISCUSSION

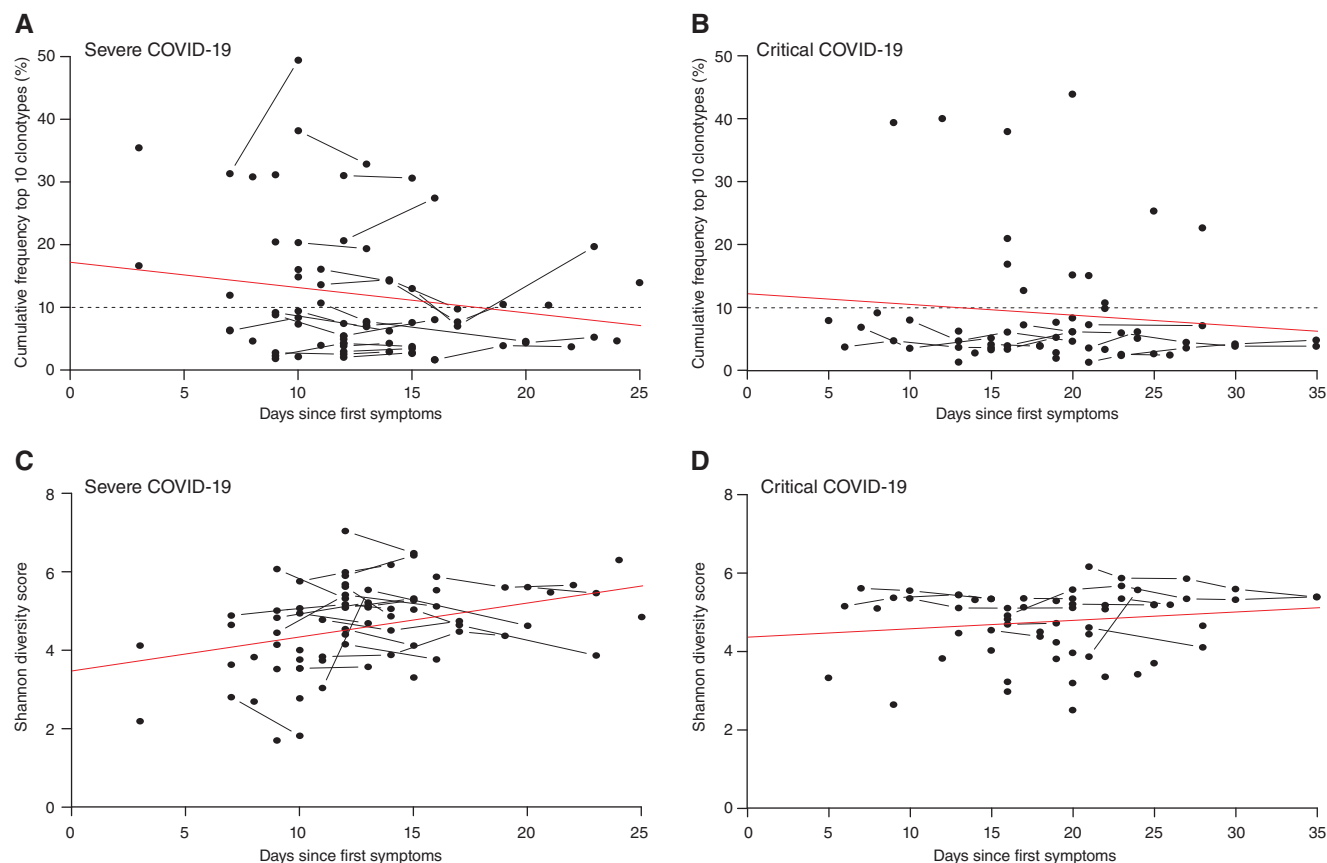
We determined the temporal dynamics of the TRB repertoire in a total of 87 COVID-19 patients of whom 46 had a severe and 41 a critical disease course. No significant differences were observed in the cumulative frequency of the top 10 clonotypes (i.e., sum of frequencies of 10 most abundant clonotypes) in severe and critical COVID-19 patients at baseline and longitudinally (Figure 1A and B). Furthermore, the TRB Shannon diversity score did not differ between the severe and critical outcome groups (Figure 1C and D). Given the lack of overt dif-

ferences in TRB repertoire between severe and critical COVID-19, we postulate that the T-lymphocyte response to COVID-19 may be mediated by several low frequency clonotypes, rather than by a single immuno-dominant clonotype. This idea is supported by other studies, where multiple smaller COVID-19 specific clonotypes were found in individual patients.<sup>20</sup> Formally, we cannot entirely exclude that clonal T-lymphocytes have homed to the lungs and therefore may be under-represented in the peripheral blood, as has been described in studies exploring paired TCR sequencing of bronchial alveolar lavage fluid and peripheral blood.<sup>21</sup>

The key to new insights based on the current dataset would be to establish which of the TRB clonotypes identified are specific for SARS-CoV-2. Public clonotypes, identical clonotypes shared across individuals, are a well-described phenomenon in both healthy and diseased subjects. In fact, mechanisms such as convergent recombination result in a far more limited TCR repertoire as theoretically possible. T-lymphocyte responses towards the same pathogen are often driven through the same antigens across individuals, resulting in epitope-specific clonotypes (enhanced sequences) which have been described for several viral diseases, including influenza, EBV, and CMV.<sup>2,22</sup> Therefore, we (and others) postulated that such enhanced sequences could be found in COVID-19 patients as well.<sup>23,24</sup> Sequences identified across individuals were considered shared if their CDR3 amino acid (AA) regions were at least 80% identical and 100% similar, meaning amino acids substitutions may only comprise of substitutions belonging to the same class. A cluster was defined as a collection of shared sequences that adhere to the aforementioned restrictions. The decision to study highly similar sequences rather than identical sequences was based on the assumption that CDR3 regions with only minor differences would still recognize the same antigen, especially when taking differences in HLA background into account, as previously reported.<sup>2,25,26</sup>

In our cohort, we identified 781 highly similar TRB CDR3 amino acid sequences representing 483 clusters in the 87 patients (Figure 2A). Most of the clusters (443) consisted of TRB sequences shared in 2 or 3 patients, with a minority (41) shared by  $\geq 4$  patients (Supplementary Table 1). We defined a cluster as "severe" or "critical" if all TRB sequences within that cluster were derived from patients with the same disease course. In total, we observed 96 severe clusters and 117 critical clusters, while the remaining 268 clusters were not associated with a particular outcome (Supplementary Table 1). To filter out shared public TRB sequences targeting common diseases such as EBV and CMV, we queried the VDJ database (VDJdb), an online repository for known TCR-antigen interactions.<sup>19</sup> We discovered 54 of the 781 shared TRB sequences had previously been associated with an antigen from a disease other than COVID-19 in the VDJdb, suggesting that the prevalence of these TRB sequences was likely not related to COVID-19, albeit the potential for cross-reactivity cannot be completely excluded (Figure 2A).<sup>19</sup>

As the remaining 727 shared TRB sequences were not associated with any antigens from previously studied diseases in the VDJdb, the prevalence of these TRB sequences in COVID-19 patients may be the result of stimulation by SARS-CoV-2 peptides. To further explore this, we utilized a dataset from a recently published study



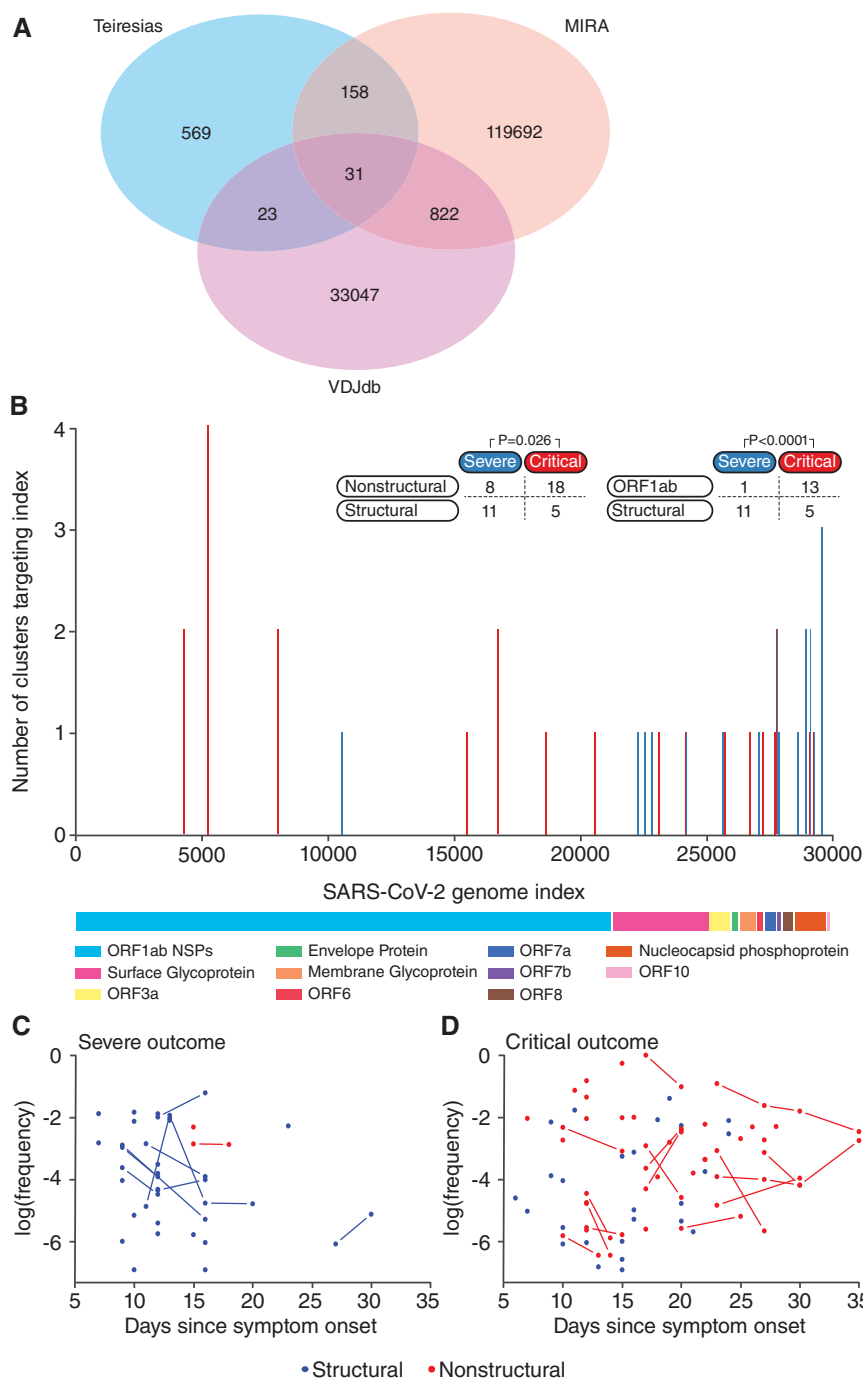
**FIGURE 1** Temporal dynamics of the top 10 clonotypes and Shannon diversity index in severe and critical COVID-19 patients. No significant differences were observed in the cumulative frequency of the top 10 clonotypes over time between patients with severe (A) and critical (B) disease course. Also, no significant differences were observed in Shannon diversity index of severe (C) and critical (D) COVID-19 patients. Red lines, derived from linear regression, represent the overall increasing or decreasing trend. The horizontal dashed lines represent the mean cumulative frequency of the top 10 clonotypes in 11 healthy controls, included as a reference. Severe group  $n = 46$ , Critical group  $n = 41$ .

available through *medRxiv* that described the TRB repertoire of over 1500 COVID-19 patients and 3500 controls.<sup>20</sup> The authors stimulated memory cells of 3 infected and 58 convalescent COVID-19 patients with SARS-CoV-2 specific peptide pools and sequenced SARS-CoV-2 specific CD8 T-lymphocytes through Multiplex Identification of T-cell Receptor Antigen Specificity (MIRA), thus generating a publicly accessible dataset with COVID-19 specific TCRs mapped to the SARS-CoV-2 genome.<sup>20,27</sup> Cross analysis of the TRB CDR3 amino acid sequences of our clusters with SARS-CoV-2 specific sequences from the MIRA-dataset revealed a match for 158 SARS-CoV-2 specific TRB sequences belonging to 134 clusters (Figure 2A; Supplementary Table 2a). These data indicate that our approach indeed identified SARS-CoV-2 specific TRB sequences and furthermore that there is overlap in the CD8 T-lymphocyte response to COVID-19 between Dutch, North-American and Italian patients. Until now, it remains unclear if any of the additional 569 highly similar TRB sequences, uniquely present in our dataset, are SARS-CoV-2 specific (Figure 2A).

Next, we selected the 113 SARS-CoV-2 specific clusters that exclusively targeted peptides from either structural or nonstructural proteins (NSPs) and screened for potential associations of clusters with disease course. We identified 19 clusters that were exclusively found in patients with a severe disease course, while 23 clusters were exclu-

sively found in patients with a critical disease course (Supplementary Table 2b). Analysis of these clusters revealed a distinct skewing towards NSPs and accessory proteins of the SARS-CoV-2 genome for clusters associated with a critical disease course, while SARS-CoV-2 specific TRB sequences in clusters associated with severe disease course target peptides from structural proteins such as nucleocapsid phosphoprotein (N) and surface glycoprotein (S) ( $P = 0.026$ ; Figure 2B). Upon further review, the skewing of the clusters associated with a critical disease course towards NSPs and accessory proteins appeared primarily mediated by the NSPs of ORF1a/b of the SARS-CoV-2 genome ( $P < 0.001$ ) (Figure 2B; Supplementary Table 2b).

The observed skewing is interesting as multiple studies regarding SARS-CoV-1 have previously indicated that peptides from N and S proteins can induce strong SARS-CoV-1 specific T-lymphocyte responses.<sup>28–30</sup> Additionally, the memory response to SARS-CoV-1 is almost exclusively directed towards peptides from N proteins.<sup>31</sup> Furthermore, all candidate SARS-CoV-2 vaccines of major pharmaceutical companies are also primarily based on S proteins.<sup>32–34</sup> Another study revealed that the vast majority of memory cells present in convalescent COVID-19 patients are directed toward peptides of the N protein, whereas almost none are directed toward peptides of NSPs.<sup>31</sup> Even though peptides from NSP3 and NSP4 could induce a CD4



**FIGURE 2** Mapping of shared highly similar TRB CDR3 amino acid sequences to the SARS-CoV-2 genome. A Venn diagram of shared sequences between highly similar sequences identified in our cohort (TEIRESIAS), TRB sequences stored in the VDJ database of known antigen-TCR associations (VDJdb) and TRB sequences previously associated with SARS-CoV-2 antigens (MIRA) (A). Clusters associated with a critical disease course ((B),  $P < 0.001$ ) target peptides from nonstructural proteins (NSPs) significantly ( $P = 0.026$ ), or NSPs encoded in ORF1a/b significantly ( $P < 0.0001$ ) more frequently compared to clusters associated with a severe disease course, for a detailed overview of the clusters see **Supplementary Table 2b**. Temporal dynamics of SARS-CoV-2-specific TRB sequences directed towards peptides from structural and nonstructural proteins in patients with severe (C) or critical (D) COVID-19 disease course. Severe group  $n = 46$ , Critical group  $n = 41$ .  $P$ -values are calculated using Fisher's Exact Test

T-lymphocyte response in convalescent COVID-19 patients, these responses were an order of magnitude lower than responses towards peptides from N and S proteins.<sup>5</sup> Furthermore, a recent publication reported that early induction of SARS-CoV-2-specific T-lymphocytes is present in patients with mild disease and accelerated viral clearance. The T-lymphocytes targeted primarily the N and S proteins, as well as the accessory proteins of ORF7/8.<sup>35</sup> Altogether, our data indicate that an immune response to the nonstructural proteins of ORF1a/b of SARS-CoV-2 may be associated with an inability to sufficiently combat SARS-CoV-2 infection and consequently lead to a critical disease course.

We investigated the relationship between disease duration and the antigenic targets of the TRB repertoire (structural vs. NSPs of ORF1a/b). In the first 16 days after symptom onset, a consistent low frequency response of  $< 1\%$  of the total TRB repertoire could be observed in 37 of 46 patients in the severe outcome group, primarily targeted at peptides derived from structural proteins (Figure 2C). For the patients with a critical outcome, a longer follow up was available, both due to closer monitoring in the ICU and due to prolonged hospital stay. We observed that clonotypes targeting peptides from nonstructural proteins of ORF1a/b are already present early during COVID-19 infection in patients with a critical outcome, in sharp

contrast to the severe outcome group (Figure 2C and D). While clonotypes targeting structural antigens could be detected up to 24 days after symptom onset, all clonotypes detected after that point targeted peptides of NSPs of ORF1a/b (Figure 2D). Based on these observations, we hypothesize there may be some potential for clonotypes specific for peptides from nonstructural proteins of ORF1a/b in COVID-19 as a marker for critical disease.

Collectively our data illustrate a clear role for the T-lymphocyte response in COVID-19. Epitope-specific highly similar clonotypes can be found in the TRB repertoire of COVID-19 patients with both severe and critical disease course. We observed that SARS-CoV-2 specific TRB sequences in clusters associated with a critical disease course, targeted the nonstructural proteins of SARS-CoV-2 significantly more frequently than clusters associated with a severe disease course, which tended to target structural proteins. Therefore, T-lymphocyte reactivity towards peptides from NSPs of ORF1a/b may be related to a critical disease course. These results may be the first step towards new insights into the mechanisms behind COVID-19 disease severity, although our data need to be validated in larger cohorts that also include non-hospitalized COVID-19 patients with a mild disease course.

### 3 | EXTENDED MATERIAL AND METHODS

#### 3.1 | Patients

Eighty-seven patients with a positive SARS-CoV-2 PCR test and a clinically established COVID-19 diagnosis were included between March 24 and April 14, 2020, at the peripheral hospital Amphia Breda, the Netherlands. A detailed description of all individual patient characteristics is provided in **Supplementary Table 3**. Thirty-five patients (mean age 67, SD 8.6; mean BMI 28.5, SD 4.8) were admitted to the intensive care unit (ICU). Twenty of these patients were directly admitted to the ICU, while 15 were initially located at the inpatient clinic but were relocated to the ICU after a median admission time of two days (range 1–6). The other 52 patients (mean age 71, SD 10.7;  $n = 50$  mean BMI 27.3, SD 4.9) were solely treated at the inpatient clinic. Six out of 35 ICU admitted patients (mean age 75, SD 7.1; mean BMI 27.1, SD 2.9) eventually succumbed after a median hospital admission period of 13 days (range 4–20) and a median ICU stay of 9.5 days (range 1.4–20.0). Four out of 6 of these patients (patients 5, 7, 8, and 16; **Supplementary Table 3**) had a history of underlying medical conditions while two (patients 4 and 13; **Supplementary Table 3**) did not suffer from any previous medical issues. Of note, however, 24 of 35 patients were still admitted to either the ICU ( $n = 21$ ) or the inpatient clinic ( $n = 3$ ) at the end of our study on May 19, 2020 (mean age 67, SD 8.2; mean BMI 29.0, SD 5.1). The other 5 patients (mean age 60, SD 6.7; mean BMI 27.9, SD 5.1) treated at the ICU recovered after a median ICU stay of 6.5 days (range 4.3–9.0) and a median post ICU stay at the inpatient clinic of 8 days (range 4–9). Six (mean age 82, SD 5.4;  $n = 5$  mean BMI 24.9, SD 5.5) out of 52 non-ICU patients succumbed after a median hospital admission period of 7 days (range 4–10; patients 41, 55, 74, 77, 83,

and 87; **Supplementary Table 3**) all these patients had signed an agreement stating that they did not wish to be transferred to the ICU or receive ventilation, which is a common procedure in the Netherlands. Forty-two patients recovered without ICU treatment (mean age 69, SD 10.0; BMI 27.6, SD 4.7) after a median hospital admission period of 7 days (range 2.0–13.0). Four of 52 patients solely treated at the inpatient clinic were still admitted at May 19, 2020, after a median hospitalization period of 47 days (range 46–52). Patients were divided into patients with a severe disease course ( $n = 46$ ; i.e., patients admitted to the inpatient clinic) or critical disease course ( $n = 41$ ; i.e., patients admitted to the ICU department and/or who succumbed to disease). Group averages are presented in **Supplementary Table 4**.

EDTA blood samples were collected from patients at multiple instances during the entire hospitalization period and occasionally after hospital discharge. See **Supplementary Figure 1** for an overview of symptom onset, patient admission, discharge, disease course and sample collection. To study T-lymphocyte clonal expansion and repertoire during COVID-19, DNA was isolated from collected frozen peripheral EDTA blood samples and subsequently used for TRB repertoire analysis.

The study was performed in accordance with the guidelines for sharing of patient data of observational scientific research in case of exceptional health situations, as issued by the Commission on Codes of Conduct of the Foundation Federation of Dutch Medical Scientific Societies (<https://www.federa.org/federa-english>).

#### 3.2 | PCR amplification of TRBV-TRBD-TRBJ gene rearrangements and library preparation

Total cellular DNA was isolated from whole blood and 1000 ng was amplified through multiplex PCR of TRBV-TRBD-TRBJ gene rearrangements following the BIOMED-2 protocol.<sup>36</sup> PCR products were gel-purified (QIAGEN, Hilden, Germany) and library preparation was performed according to the manufacturer's instructions (NEBNext® Ultra™ II DNA Library Prep Kit for Illumina®, NEB, Ipswich, MA, USA). The purity and size estimation of the libraries was assessed on an Agilent Bioanalyzer using the Agilent High Sensitivity DNA kit (Agilent Technologies, Lexington, MA, USA). The dsDNA HS Assay Kit was employed for quantification of the sequencing libraries on a Qubit 3.0 fluorometer (ThermoFisher Scientific, Waltham, MA, USA). Paired-end sequencing was performed using the MiSeq Reagent Kit v2 ( $2 \times 250$  bp) on the MiSeq Benchtop Sequencer (Illumina, San Diego, CA, USA). PhiX was spiked-in at a 20% concentration to increase library diversity.

#### 3.3 | NGS data bioinformatics analysis

Raw FASTQ files were uploaded to the ARResT/Interrogate immunoprofiler for annotation and initial exploratory analysis.<sup>37</sup> The full productive TRB repertoire for each sample was downloaded in .csv format and processed in R (R Core Team, 2020) during further analysis.<sup>38</sup> Shannon diversity index was calculated using the vegan package.<sup>39</sup> A



summary of relevant QC metrics is depicted in **Supplementary Table 5**. For more details please refer to our entry in the GEO database under accession number GSE161810.

Clonotypes below 50 reads were excluded from clustering to reduce the influence of technical sequencing errors. Clustering was performed using the TEIRESIAS algorithm,<sup>24</sup> a commonly used algorithm for pattern recognition in biological studies. The TEIRESIAS algorithm was initially developed by the Bioinformatics and Pattern Discovery group at the IBM Computational Biology Center<sup>23</sup> and later adapted for CDR3 amino-acid sequences in chronic lymphocytic leukemia.<sup>24</sup> We in turn adapted the identity and similarity thresholds to 80% and 100% respectively, to accommodate for the use of TCR data and to increase the likelihood that the identified highly similar TCRs indeed target the same epitope. Clustering was performed based on CDR3 amino acid sequence alone, TRBV and TRBJ gene identity was not taken into account for clustering.

The MIRA dataset was obtained from the ImmuneCODE data release.<sup>20</sup> However, in this raw dataset of the MIRA results, 3178 out of 120,703 unique CDR3 amino acid TRB sequences targeted more than one peptide from the COVID-19 genome, with some TRB targeting as many as 15. As we deemed it unlikely that such promiscuous binding was entirely accurate, we applied an additional filtering step to these 3178 TRB sequences. In this filtering step, we discarded all peptide-TRB sequence associations that were reported in only one patient, while keeping the peptide-TRB associations reported in multiple patients, reducing this subset to 2647 TRB sequences with robust antigen associations. While this conservative approach certainly risks filtering out some true-positive hits, we considered it more important to prevent any doubts introduced by the potential false-positives in the MIRA-dataset. The 2647 TRB sequences and their peptide associations were merged back into the original MIRA dataset.

Both the MIRA dataset and our own clusters were screened for known TCR-antigen associations through the VDJdatabase (VDJdb) and matches were tagged.

The CDR3 amino acid sequences for each entry in the MIRA dataset were compared with the CDR3 amino acid sequences identified during clustering. All matches can be found in **Supplementary Table 2a**. For downstream analysis clusters matching with both the MIRA dataset and an unrelated target (autoantigen, other pathogen) in the VDJdb were filtered. Clusters with multiple targets within the same class (structural proteins vs nonstructural proteins) were grouped and labeled as targeting that class. Clusters not exclusively associated with an outcome or targeting peptides from both nonstructural and structural proteins were filtered.

### 3.4 | Statistical analysis

Frequency of a clonotype indicates the % reads of the total TRB repertoire in the patient sample. Cumulative frequency was calculated by summing the frequency of the 10 largest productive clonotypes in the repertoire. Cumulative frequency of the top 10 clonotypes and Shannon diversity score between outcome groups was compared through

Wilcoxon signed-rank test. For the comparison of peptide targets between outcome groups, Fisher's Exact tests were applied on  $2 \times 2$  contingency tables. All statistical analysis was performed in R (R Core Team, 2020).

### ACKNOWLEDGEMENTS

We gratefully acknowledge Mr. P.J. Hengeveld for constructive discussion.

### AUTHOR CONTRIBUTIONS

**B.S.** and **J.L.J.C.** performed the experiments, interpreted results and wrote the manuscript; **P.M.K.** analyzed the data, interpreted results and wrote the manuscript; **A.J.G.**, **D.L.** and **T.A.A.M.E.** collected the samples, interpreted results and helped write the manuscript; **A.W.L.**, **W.A.D.** and **V.H.J.V.** designed and supervised the study, interpreted results and helped write the manuscript.

### DISCLOSURE

The authors declare no conflict of interest.

Shared first author

Shared last author;

### DATA SHARING STATEMENT

The data that support the findings of this study are available from the corresponding author upon reasonable request. TRB NGS data are uploaded in the GEO database and are available under accession number GSE161810.

### ETHICAL STATEMENT

The study was performed in accordance with the guidelines for sharing of patient data of observational scientific research in case of exceptional health situations, as issued by the Commission on Codes of Conduct of the Foundation Federation of Dutch Medical Scientific Societies (<https://www.federa.org/federa-english>).

### REFERENCES

1. World Health O. Coronavirus disease 2019 (COVID-19): situation report, 72. 2020.
2. Dash P, Fiore-Gartland AJ, Hertz T, et al. Quantifiable predictive features define epitope-specific T cell receptor repertoires. *Nature*. 2017;547:89-93.
3. Nishiura H, Kobayashi T, Miyama T, et al. Estimation of the asymptomatic ratio of novel coronavirus infections (COVID-19). *International journal of infectious diseases*. 2020;94:154.
4. Murthy S, Gomersall CD, Fowler RA. Care for critically ill patients with COVID-19. *Jama*. 2020;323:1499-1500.
5. Grifoni A, Weiskopf D, Ramirez SI, et al. Targets of T cell responses to SARS-CoV-2 coronavirus in humans with COVID-19 disease and unexposed individuals. *Cell*. 2020.
6. Qin C, Zhou L, Hu Z, et al. Dysregulation of immune response in patients with COVID-19 in Wuhan, China. *Clinical Infectious Diseases*. 2020.
7. Zheng M, Gao Y, Wang G, et al. Functional exhaustion of antiviral lymphocytes in COVID-19 patients. *Cellular & molecular immunology*. 2020;17:533-535.
8. Schrijver, B., Assmann, J. L., Van Gammeren, A. J., Vermeulen, R. C., Portengen, L., Heukels, P., ... & Ermens, T. A. (2020). Extensive

- longitudinal immune profiling reveals sustained innate immune activation in COVID-19 patients with unfavorable outcome. *European Cytokine Network*. 31(4), 154-167.
9. Ng O-W, Chia A, Tan AT, et al. Memory T cell responses targeting the SARS coronavirus persist up to 11 years post-infection. *Vaccine*. 2016;34:2008-2014.
  10. Parker DC. T cell-dependent B cell activation. *Annual review of immunology*. 1993;11:331-360.
  11. Ni L, Ye F, Cheng M-L, et al. Detection of SARS-CoV-2-specific humoral and cellular immunity in COVID-19 convalescent individuals. *Immunity*. 2020.
  12. Wen W, Su W, Tang H, et al. Immune cell profiling of COVID-19 patients in the recovery stage by single-cell sequencing. *Cell discovery*. 2020;6:1-18.
  13. Nikolich-Zugich J, Slifka MK, Messaoudi I. The many important facets of T-cell repertoire diversity. *Nature Reviews Immunology*. 2004;4:123-132.
  14. Rudolph MG, Stanfield RL, Wilson IA. How TCRs bind MHCs, peptides, and coreceptors. *Annu Rev Immunol*. 2006;24:419-466.
  15. Khoruts A, Mondino A, Pape KA, Reiner SL, Jenkins MK. A natural immunological adjuvant enhances T cell clonal expansion through a CD28-dependent, interleukin (IL)-2-independent mechanism. *The Journal of experimental medicine*. 1998;187:225-236.
  16. Schwanninger A, Weinberger B, Weiskopf D, et al. Age-related appearance of a CMV-specific high-avidity CD8+ T cell clonotype which does not occur in young adults. *Immunity & Ageing*. 2008;5:1-9.
  17. Schultheiß C, Paschold L, Simnica D, et al. Next-generation sequencing of T and B cell receptor repertoires from COVID-19 patients showed signatures associated with severity of disease. *Immunity*. 2020;53:442-455.e444.
  18. Minervina, A. A., Komech, E. A., Titov, A., Koraichi, M. B., Rosati, E., Rosati, E., Mamedov, I. Z. ... & Pogorelyy, M. V. (2020). Longitudinal high-throughput TCR repertoire profiling reveals the dynamics of T-cell memory formation after mild COVID-19 infection. *Elife*, 10, e63502.
  19. Shugay M, Bagaev DV, Zvyagin IV, et al. VDJdb: a curated database of T-cell receptor sequences with known antigen specificity. *Nucleic acids research*. 2018;46:D419-D427.
  20. Snyder TM, Gittelman RM, Klinger M, et al. Magnitude and dynamics of the T-cell response to SARS-CoV-2 infection at both individual and population levels. *medRxiv*. 2020.
  21. Xu G, Qi F, Li H, et al. The differential immune responses to COVID-19 in peripheral and lung revealed by single-cell RNA sequencing. *medRxiv*. 2020.
  22. Glanville J, Huang H, Nau A, et al. Identifying specificity groups in the T cell receptor repertoire. *Nature*. 2017;547:94-98.
  23. Rigoutsos I, Floratos A. Combinatorial pattern discovery in biological sequences: the TEIRESIAS algorithm. *Bioinformatics (Oxford, England)*. 1998;14:55-67.
  24. Darzentas N, Hadzidimitriou A, Murray F, et al. A different ontogenesis for chronic lymphocytic leukemia cases carrying stereotyped antigen receptors: molecular and computational evidence. *Leukemia*. 2010;24:125-132.
  25. Klinger M, Pepin F, Wilkins J, et al. Multiplex identification of antigen-specific T cell receptors using a combination of immune assays and immune receptor sequencing. *PLoS One*. 2015;10:e0141561.
  26. Huang H, Wang C, Rubelt F, Scriba TJ, Davis MM. Analyzing the Mycobacterium tuberculosis immune response by T-cell receptor clustering with GLIPH2 and genome-wide antigen screening. *Nature biotechnology*. 2020;1-9.
  27. Nolan S, Vignali M, Klinger M, et al. A large-scale database of T-cell receptor beta (TCR $\beta$ ) sequences and binding associations from natural and synthetic exposure to SARS-CoV-2. 2020.
  28. Yang Z-y, Kong W-p, Huang Y, et al. A DNA vaccine induces SARS coronavirus neutralization and protective immunity in mice. *Nature*. 2004;428:561-564.
  29. Gao W, Tamin A, Soloff A, et al. Effects of a SARS-associated coronavirus vaccine in monkeys. *The Lancet*. 2003;362:1895-1896.
  30. Kim TW, Lee JH, Hung C-F, et al. Generation and characterization of DNA vaccines targeting the nucleocapsid protein of severe acute respiratory syndrome coronavirus. *Journal of virology*. 2004;78:4638-4645.
  31. Le Bert N, Tan AT, Kunasegaran K, et al. SARS-CoV-2-specific T cell immunity in cases of COVID-19 and SARS, and uninfected controls. *Nature*. 2020;584:457-462.
  32. Folegatti PM, Ewer KJ, Aley PK, et al. Safety and immunogenicity of the ChAdOx1 nCoV-19 vaccine against SARS-CoV-2: a preliminary report of a phase 1/2, single-blind, randomised controlled trial. *The Lancet*. 2020;396:467-478.
  33. Mercado NB, Zahn R, Wegmann F, et al. Single-shot Ad26 vaccine protects against SARS-CoV-2 in rhesus macaques. *Nature*. 2020;1-6.
  34. Sahin U, Muik A, Derhovanessian E, et al. COVID-19 vaccine BNT162b1 elicits human antibody and TH 1 T-cell responses. *Nature*. 2020;1-9.
  35. Tan AT, Linster M, Tan CW, et al. Early induction of functional SARS-CoV-2 specific T cells associates with rapid viral clearance and mild disease in COVID-19 patients. *Cell Reports*. 2021;108728.
  36. Van Dongen JJM, Langerak AW, Brüggemann M, et al. Design and standardization of PCR primers and protocols for detection of clonal immunoglobulin and T-cell receptor gene recombinations in suspect lymphoproliferations: report of the BIOMED-2 Concerted Action BMH4-CT98-3936. *Leukemia*. 2003;17:2257-2317.
  37. Bystry V, Reigl T, Krejci A, et al. ARResT/Interrogate: an interactive immunoprofiler for IG/TR NGS data. *Bioinformatics*. 2017;33:435-437.
  38. R Core Team. *R: A language and environment for statistical computing*. Vienna, Austria; 2020.
  39. Jari Oksanen FGB, Friendly M, Kindt R, et al. Vegan: community ecology package. *R package version*. 2018;2.

## SUPPORTING INFORMATION

Additional supporting information may be found online in the Supporting Information section at the end of the article.

**How to cite this article:** Assmann JLC, Kolijn PM, Schrijver B, et al. TRB sequences targeting ORF1a/b are associated with disease severity in hospitalized COVID-19 patients. *J Leukoc Biol*. 2022;111:283-289.

<https://doi.org/10.1002/JLB.6COVCRA1120-762R>.