

ORIGINAL ARTICLE

CXC chemokine ligand-13 promotes metastasis via CXCR5-dependent signaling pathway in non-small cell lung cancer

Chia-Chia Chao¹ | Wei-Fang Lee² | Shih-Wei Wang^{3,4,5} | Po-Chun Chen^{6,7,8}  | Ayaho Yamamoto⁹ | Tsung-Ming Chang¹⁰ | Shun-Long Weng^{4,11} | Ju-Fang Liu^{6,8,12} 

¹Department of Respiratory Therapy, Fu Jen Catholic University, New Taipei City, Taiwan

²School of Dental Technology, College of Oral Medicine, Taipei Medical University, Taipei, Taiwan

³Institute of Biomedical Sciences, MacKay Medical College, New Taipei City, Taiwan

⁴Department of Medicine, MacKay Medical College, New Taipei City, Taiwan

⁵Graduate Institute of Natural Products, College of Pharmacy, Kaohsiung Medical University, Kaohsiung, Taiwan

⁶Translational Medicine Center, Shin-Kong Wu Ho-Su Memorial Hospital, Taipei City, Taiwan

⁷Department of Biotechnology, College of Medical and Health Science, Asia University, Taichung, Taiwan

⁸Department of Medical Research, China Medical University Hospital, China Medical University, Taichung, Taiwan

⁹Child Health Research Centre, The University of Queensland, South Brisbane, Qld, Australia

¹⁰Institute of Physiology, School of Medicine, National Yang Ming Chiao Tung University, Taipei City, Taiwan

¹¹Department of Obstetrics and Gynecology, Hsinchu MacKay Memorial Hospital, Hsinchu City, Taiwan

¹²School of Oral Hygiene, College of Oral Medicine, Taipei Medical University, Taipei City, Taiwan

Correspondence

Shun-Long Weng, Department of Medicine, MacKay Medical College, No.46, Sec. 3, Zhongzheng Rd, New Taipei City, Sanzhi Dist. 252, Taiwan.

Email: 4467@mmh.org.tw

Ju-Fang Liu, School of Oral Hygiene, College of Oral Medicine, Taipei Medical University, No. 250, Wuxing Street, Taipei 11031, Taiwan.

Email: jufangliu@tmu.edu.tw

Funding information

This work was supported by grants from The Ministry of science and technology (MOST-106-2314-B-038-099-MY3) and Taipei Medical University (TMU108-AE1-B47). Shin Kong Wu Ho-Su Memorial Hospital (108-SKH-FJU-06 and SKH-8302-106-0402). Hsinchu MacKay Memorial Hospital (MMH-HB-10804; MMH-HB-10905).

Abstract

The CXC chemokine ligand-13 (CXCL13) is a chemoattractant of B cells and has been implicated in the progression of many cancers. So far, CXCL13 and its related receptor CXCR5 have been proved to regulate cancer cell migration as well as tumour metastasis. However, the role of CXCL13-CXCR5 axis in metastasis of lung cancer is still poorly understood. In this study, we found that CXCL13 and CXCR5 were commonly up-regulated in lung cancer specimens compared with normal tissues among different cohorts. Our evidence showed that CXCL13 obviously promoted migration of lung cancer cells, and this effect was mediated by vascular cell adhesion molecule-1 (VCAM-1) expression. We also confirmed that CXCR5, the major receptor responsible for CXCL13 function, was required for CXCL13-promoted cell migration. We also test the candidate components which are activated after CXCL13 treatment and found that phospholipase C- β (PLC β), protein kinase C- α (PKC α) and c-Src signalling pathways were involved in CXCL13-promoted cell migration and VCAM-1 expression in lung cancer cells. Finally, CXCL13 stimulated NF- κ B transcription factor in lung cancer cells, contributing to VCAM-1 expression in translational level. These evidences propose a novel insight into lung cancer metastasis which is regulated by CXCL13.

This is an open access article under the terms of the Creative Commons Attribution License, which permits use, distribution and reproduction in any medium, provided the original work is properly cited.

© 2021 The Authors. *Journal of Cellular and Molecular Medicine* published by John Wiley & Sons Ltd and Foundation for Cellular and Molecular Medicine.

KEYWORDS

CXCL13, CXCR5, lung cancer, metastasis, VCAM-1

1 | INTRODUCTION

Lung cancer is the major cause responsible for cancer death worldwide. Most of lung cancer patients are diagnosed as non-small cell lung cancer (NSCLC), including lung adenocarcinoma (LUAD) and lung squamous-cell carcinoma (LUSC).¹ The golden treatment regimens such as chemotherapy and radiotherapy have improved prognosis of lung cancer over the past decades, survival rate remains low; the 5-year survival rate is about 15% while the patients are diagnosed with lung cancer. The low survival rate of lung cancer is caused by distant metastasis occurred in late-stage. However, the mechanisms of metastasis in NSCLC have not yet been fully illustrated. Cancer metastasis is a complex, multi-step process, in which cells escape from the primary origin and form metastases at a distant site.² Primary cancer cells loss their cell adhesion phenotype, polarity, rearrange cytoskeleton and adjacent extracellular matrix (ECM) to invade the surrounding stroma.³

Primary tumour release cancer cells into the circulation long before diagnosis. To establish disseminated cancer cells that may finally progress to metastases, circulating cancer cells must first transmigrate endothelial capillary walls and successfully adapt to the new environmental stress.⁴ Transendothelial migration (TEM) of monocytes is the process by which monocytes or leukocytes leave the circulatory system and extravasate through the endothelial lining of the blood vessel wall, then enter the underlying tissue.⁵ Similar to leukocyte extravasation, lung metastasis requires cancer cells to cross the lung endothelium.⁶ Vascular cell adhesion molecule 1 (VCAM-1) has been implicated in early leukocyte transmigration.⁵ More and more is being learnt about the key role played by VCAM-1 in tumorigenesis and metastasis.⁷ VCAM-1 expression correlates with glioblastoma grade,⁸ as well as with poor survival in lung cancer⁹ and epithelial ovarian cancer.¹⁰ Previous research has indicated that VCAM-1 contributes to breast cancer cells metastasizing to lung.¹¹ Moreover, VCAM-1 overexpression in breast cancer promotes bone metastasis by activating osteoclastogenesis and subsequent early relapse.¹² These findings establish VCAM-1 as a promising target for the prevention and inhibition of metastasis.

Several studies have reported that chemokines have a key role in regulating the homing of leukocytes as well as cancer cells.¹³ We found that expression levels of CXCL13 and CXCR5 were highly correlated with lung cancer progression.¹⁴ Chemokines have revealed that they have crucial roles in the metastasis and progression of different cancers. In breast cancer, the CXCL12/CXCR4 axis has been extensively investigated in regard to the homing of cancer cells to metastatic sites and promoting metastasis.^{15,16} Metastatic breast cancer cells express high levels of CXCR4; its ligand CXCL12 is highly secreted by stromal cells within these tissues.¹⁷ CXCL13, also known as B-cell-attracting chemokine 1 (BCA-1), and its receptor

CXCR5 help to regulate lymphocyte migration and promote inflammation.^{18,19} The binding of CXCL13 to CXCR5 elicits the activation of PI3K/Akt, MAPK, integrin- β 3/Src/FAK and the DOCK2/Rac/JNK pathways, which regulate cell survival, invasion, and proliferation, respectively.²⁰

Recently, the CXCL13-CXCR5 axis has been implicated in the progression of various tumours, including colon cancer,²¹ hepatocellular carcinoma,²² chronic lymphocytic leukaemia,²³ breast cancer,²³ neuroblastoma²⁴ and prostate cancer.²⁵ Much clinical evidence highlights the crucial roles of the CXCL13-CXCR5 axis in the regulation of tumour growth, progression and metastasis in the tumour microenvironment.²⁶ However, the role of the CXCL13-CXCR5 axis in lung cancer is poorly discussed.

Here, we found that expression levels of CXCL13 and CXCR5 were highly correlated with lung cancer progression. Also, CXCL13/CXCR5 axis contributed to cell motility in lung cancer cells, which was caused by VCAM-1 expression. Finally, PLC β , PKC α and c-Src signalling pathways were involved in CXCL13-promoted cell migration and VCAM-1 expression in lung cancer cells. Our present work provides novel application of CXCL13/CXCR5 axis in lung cancer therapeutic strategy.

2 | MATERIALS AND METHODS

2.1 | Meta-analysis of associations between CXCL13, CXCR5 and VCAM-1 expression in NSCLC

The data sets used in meta-analysis were selected from Lung Cancer Explorer (LCE; <http://qbrc.swmed.edu/lce/>), which contains data sets of gene profiling of tumour patients and healthy subjects obtained from Gene Expression Omnibus (GEO), The Cancer Genomics Atlas (TCGA) and other published literatures. Data sets of lung cancer tissues containing adenocarcinoma (LUAD) and squamous-cell carcinoma (LUSC) were selected from LCE. For the meta-analysis of CXCL13 and CXCR5 expression levels in selected data sets, the sample size of each group (ADC, SCC, normal) more than 20 was required to assure robust analysis results. The correlation analysis of CXCL13, CXCR5 and VCAM-1 were performed with Gene Expression Profiling Interactive Analysis (GEPIA; <http://gepia.cancer-pku.cn/>) web-based tool.²⁷ The RNA profiling data of CXCL13, CXCR5 and VCAM-1 were performed with Correlation Analysis provided by GEPIA.

2.2 | Materials

Anti-mouse and anti-rabbit IgG-conjugated horseradish peroxidase, rabbit polyclonal antibodies specific for PLC β 3 (Santa Cruz,

sc-403), PKC α (Santa Cruz, sc-208), c-Src (cell signaling, #2109s), p65 (Santa Cruz, sc-109), I κ B α (Santa Cruz, sc-1643), p-PLC β (cell signaling, #2481s), p-PKC α (cell signaling, #9375), p-c-Src (cell signaling, #5473), p-p65 (cell signaling, #3033), p-IKK α / β (cell signaling, #2694), IKK α / β (Santa Cruz, sc-7218), p-I κ B α (cell signaling, #9246), CXCL13 (GeneTex, GTX108471), CXCR5 (GeneTex, GTX100351), VCAM-1 (GeneTex, GTX110684) and β -Actin (GeneTex, GTX109639) were purchased from Cell Signaling Technology, Inc, Santa Cruz Biotechnology, Inc and GeneTex Inc. All other chemicals were obtained from Sigma-Aldrich. The CXCL13 shRNA plasmid was purchased from RNAiCore (Clone ID: TRCN0000057983). All siRNAs were purchased from Sigma-Aldrich (Mission[®] siRNA).

2.3 | Cell culture

CL1-0 lung cancer cell line was provided by Dr Shun-Fa Yang (Institute of Medicine, Chung Shan Medical University). The cells will be cultured in α -MEM medium supplemented with 20 mmol/L HEPES, 10% FBS, 2 mmol/L glutamine, penicillin and streptomycin (Invitrogen) and maintained at 37°C in a 5% CO₂ atmosphere.

2.4 | Cell viability assays

Cells (7×10^3) were seeded in 96-well plates prior to the indicated treatment. Cell viability was assayed using CCK8 reagent as described²⁸ and was determined as the percentage of the control. Samples were protected from light during the assays, and the incubation time for CCK8 was set to 4 hours. Each condition was performed in eight replicate wells, and the data present were from at least three independent experiments.

2.5 | Transwell migration and invasion assay

All cell migration and invasion assays were performed using Transwell inserts (8- μ m pore size; Costar) in 24-well plates. Lung cancer cells were pre-treated for 30 minutes with the indicated concentrations of inhibitors or vehicle (0.1% DMSO). Cells (3×10^4 in 200 μ L of serum-free medium) were then seeded in the upper chamber of the Transwell chamber, and 300 μ L of the same medium containing varying concentrations of CXCL13 (R&D Systems) was placed in the lower chamber. After 24 hours, the migrated cells were fixed in 3.7% formaldehyde for 15 minutes and stained with 0.05% crystal violet in PBS for 15 minutes. The cells beneath the filters were removed and rinsed by PBS. The migrated cells on the underside of the filters were examined and counted by using light microscopy. For the invasion assay, Transwell inserts were coated with BD Matrigel (BD Biosciences) before use. The experimental protocol for the invasion assay was as described above for the cell migration assay. Each experiment was performed with triplicate wells and was repeated at least three times.

2.6 | Western blot analysis

The cellular lysates collected from lung cancer cells were resolved on SDS-PAGE and transferred to Immobilon polyvinylidene difluoride (PVDF) membranes. The blots were blocked with NAP-BLOCKER[™] in TBS [2X] (G-Biosciences) for 1 hour at room temperature and then probed with rabbit anti-human antibodies against (1:1000) for 1 hour at room temperature. After three washes, the blots were subsequently incubated with a donkey anti-rabbit peroxidase-conjugated secondary antibody (1:5000) for 1 hour at room temperature. The blots were visualized with enhanced chemiluminescence substrate and photographed using a charge-coupled device camera-based detection system (UVP Inc). Quantitative data were obtained using ImageJ software (National Institutes of Health).

2.7 | Quantitative real-time PCR

qPCR analysis was carried out using TaqMan[®] one-step PCR Master Mix (Applied Biosystems). One hundred ng of total cDNA was added per 25- μ L reaction with sequence-specific primers and TaqMan[®] probes. Sequences for all target gene primers and probes were purchased commercially (β -actin was used as internal control; Applied Biosystems). Quantitative RT-PCR assays were carried out in triplicate on StepOnePlus sequence detection system. The cycling conditions were 10-minutes polymerase activation at 95°C followed by 40 cycles at 95°C for 15 s and 60°C for 60 s. The threshold was set above the non-template control background and within the linear phase of target gene amplification to calculate the cycle number at which the transcript was detected (denoted as C_T).

2.8 | Immunofluorescence

Cells were seeded on chamber slides before immunofluorescence staining. After treatment with indicated condition as described in figure legends, the cells were washed with PBS and fixed in 3.7% formaldehyde for 10 minutes at room temperature. Cells were washed three times with PBS and blocked with 4% BSA for 15 minutes. Cells were then incubated with the p65 primary antibody (1:100) for 1 hour at room temperature, washed again and incubated with FITC-conjugated secondary antibody (1:100) for 1 hour. Finally, cells were washed, mounted with DAPI containing solution, and photographed with a Nikon Ti2 microscopy System (Nikon).

2.9 | Transfection of shRNAs and siRNAs

The lung cancer cells were transfected with shRNAs or siRNAs using Lipofectamine 3000 (Invitrogen) according to the manufacturer's recommendations. After 24 hours post-transfection, the cells were performed with cell migration, qPCR, Western blot,

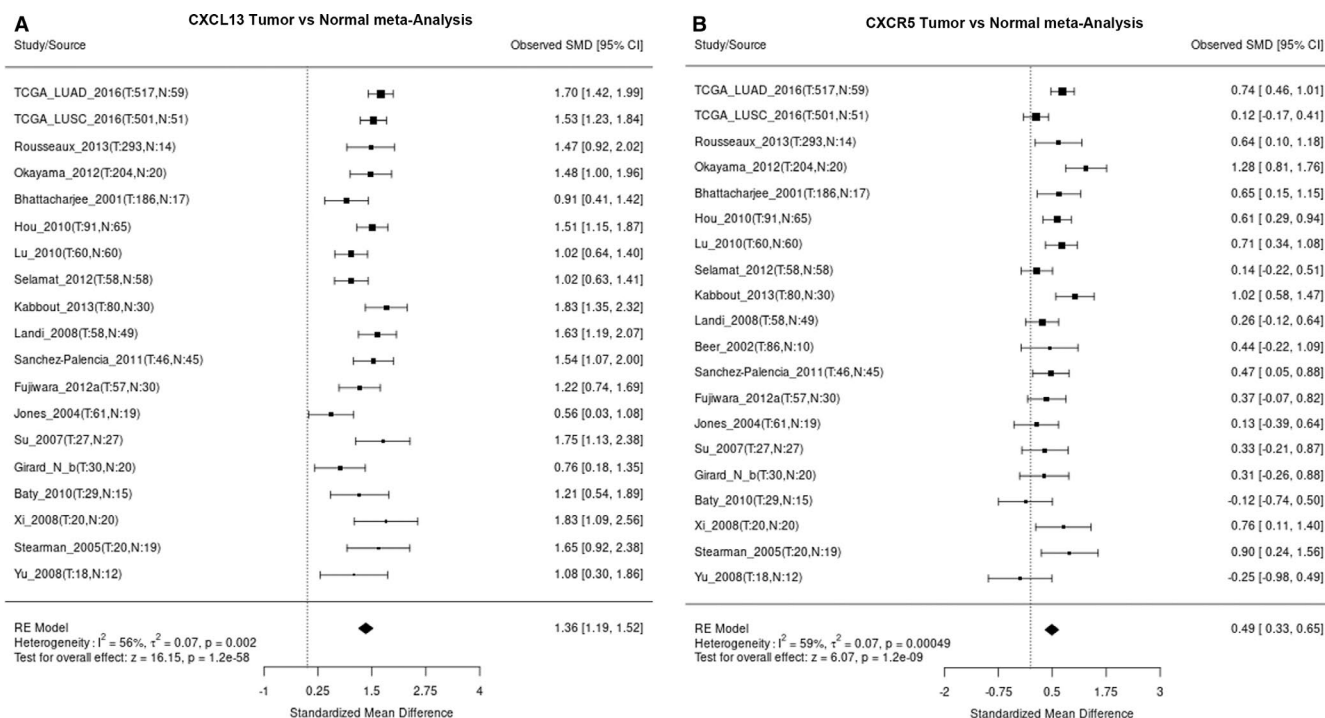


FIGURE 1 Tumour versus normal expression difference of CXCL13 and CXCR5 in LUAD and LUSC. A and B, Expression patterns of CXCL13 and CXCR5 in all lung cancer tissues containing LUAD and LUSC were analysed by using LCE tool and showed by forest plot. SMD: standardized mean difference

Immunofluorescence or luciferase reporter assays as described in Figure Legends section.

2.10 | Luciferase reporter assay

The luciferase activity in the transfected cells was measured using a Luciferase Reporter Assay System (Promega) according to the manufacturer's instructions. Lung cancer cells were transfected with NF- κ B vectors using Lipofectamine 3000 (Invitrogen) for 24 hours, the cells were treated with inhibitors or vehicle control for 30 minutes and then exposed to CXCL13 (30 ng/mL) for 24 hours. Transactivation was determined by monitoring the firefly luciferase levels in the pGL2 vector. The luciferase assay was performed by adding lysis buffer (100 μ L) and harvesting the cells through centrifugation (16200 g for 5 minutes). The supernatant was transferred to fresh tubes, and 20 μ L of cell lysate was added to 80 μ L of fresh luciferase assay buffer in an assay tube. The luciferase activity was measured using a microplate luminometer. Luciferase activity was normalized to transfection efficiency based on the cotransfected β -galactosidase expression vector.

2.11 | Statistics

The values given will be the means \pm SD. The significance of difference between two experimental groups was analysed by Student's *t* test, and multiple group comparisons were performed using one-way analysis of variance (one-way ANOVA) with Fisher LSD post

hoc tests. Between-group differences will be considered significant if the *P* value is <0.05 .

3 | RESULTS

3.1 | CXC chemokine ligand-13 and CXCR5 is highly expressed in lung cancer specimens

CXC chemokine ligand-13 has been implicated in the progression of various cancers.²⁶ The evidence also shows that the CXCL13-CXCR5 pathway is important in prostate cancer cell invasion and migration.²⁵ However, little is known about the CXCL13-CXCR5 axis and its roles in lung cancer. We first examined the expression profile of CXCL13 and CXCR5 in lung cancer tissues by using on-line lung cancer-specific database-the Lung Cancer Explorer (LCE).²⁹ Surprisingly, with meta-analysis in all lung cancer tissues containing adenocarcinoma (LUAD) and squamous-cell carcinoma (LUSC), we found consistent up-regulation of CXCL13 and CXCR5 in multiple lung cancer studies (Figure 1A,B), suggesting the impact of CXCL13-CXCR5 axis in lung cancer progression.

3.2 | CXC chemokine ligand-13 promotes cell mobility in lung cancer cells

To determine whether CXCL13 affected migration of lung cancer cells, a Transwell migration and invasion assays were used. The

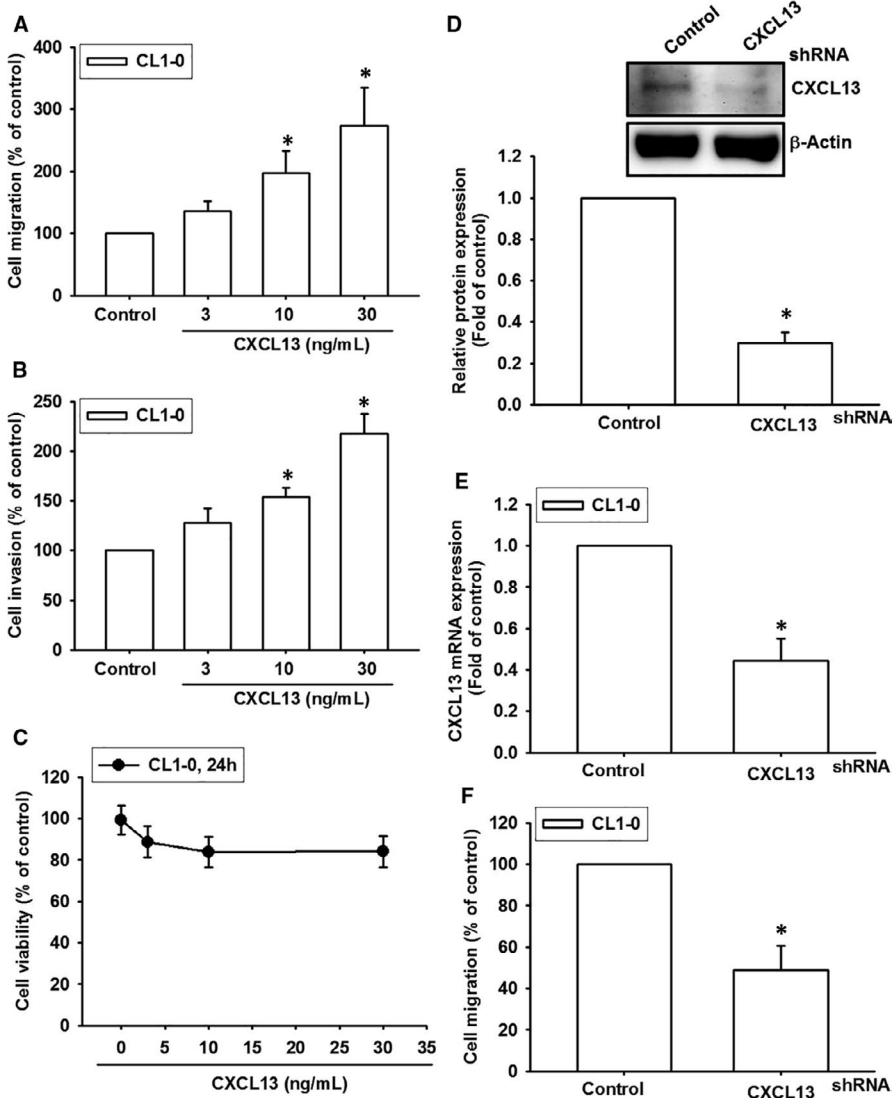


FIGURE 2 CXCL13 promotes cell mobility in lung cancer cells. (A-C) The CL1-0 lung cancer cells were incubated with various concentrations (0, 3, 10 and 30 ng/mL) of human recombinant CXCL13 for 24 h, and the migration A, or invasion assay B, were performed by using Transwell. The migrating and invading cells were counted by microscope. C, The cell viability of CL1-0 cells in response to CXCL13 incubation was assessed by CCK8 reagent. D and E, The CL1-0 cells were transfected with CXCL13 shRNA for 24 h, and the knockdown efficiency of CXCL13 was confirmed by Western blot and qPCR. F, The CL1-0 transfected with CXCL13 shRNA was subjected to cell migration assay. Results are expressed as the mean \pm SD of triplicate samples. * $P < .05$ compared to the control group

results indicated treatment with recombinant CXCL13 dramatically increased migration and invasion of CL1-0 lung cancer cells (Figure 2A,B). The cell viability assay showed no statistical significance after CXCL13 incubation in lung cancer cells (Figure 2C). With the gene knockdown by CXCL13 shRNA in lung cancer cells, we confirmed that expression of CXCL13 was contributed to cell migratory ability in lung cancer cells (Figure 2D-F).

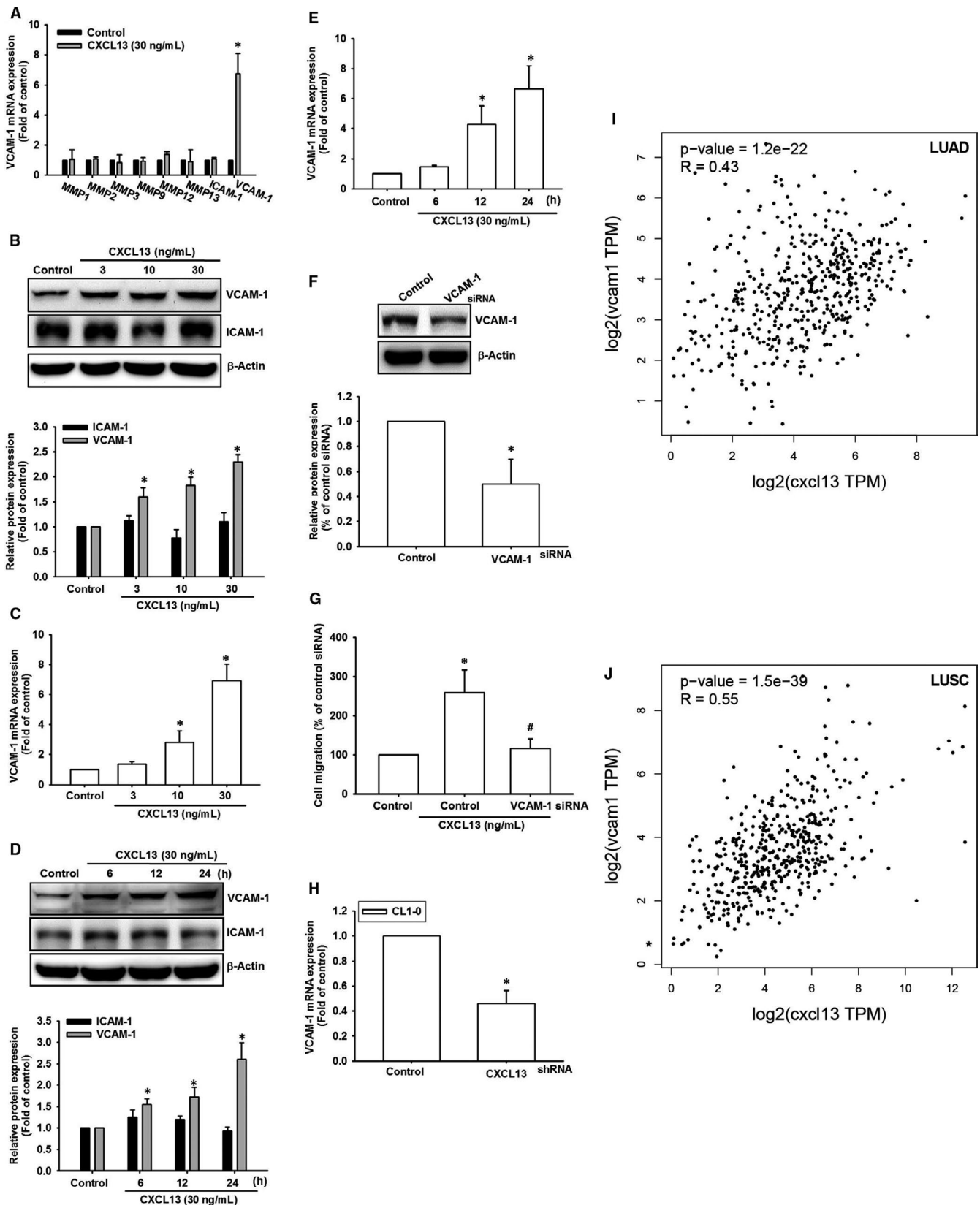
3.3 | Vascular cell adhesion molecule-1 expression contributes to CXCL13-induced cell migration in lung cancer cells

We next explored the candidate molecules that regulated cell migration in lung cancer cells. The data showed that VCAM-1 was obviously induced after incubation with CXCL13 (Figure 3A). Furthermore, CXCL13-promoted VCAM-1 expression in lung cancer cells in a dose- and time-dependent manners (Figure 3B-E). Knockdown of VCAM-1 expression in lung cancer cells confirmed

that CXCL13-promoted cell migration was mediated through VCAM-1 (Figure 3F-H). Finally, we manipulated online gene expression profiling tool GEPIA²⁷ to assess the correlation between CXCL13 and VCAM-1 in lung cancer tissues. The data indicated that VCAM-1 expression levels were highly correlated with CXCL13 in specimens of LUAD and LUSC (Figure 3I,J). In summary, these evidences propose that VCAM-1 is required for cell migratory potential in response to CXCL13 incubation.

3.4 | CXCR5 mediates cell migration and VCAM-1 expression in response to CXCL13 incubation in lung cancer cells

CXCR5, a member of the G-protein coupled receptors (GPCR) family, is required for CXCL13 biological functions.³⁰ The CXCL13-CXCR5 axis is implicated in regulating lymphocyte migration and promoting inflammation.^{18,19} Therefore, we hypothesized that CXCL13-induced lung cancer cell migration may be regulated by CXCR5. Lung



cancer cells transfected with a CXCR5 siRNA markedly abolished CXCL13-induced cell migration and VCAM-1 expression (Figure 4A-C). Meanwhile, CXCR5 neutralized antibody also dose-dependently

reversed cell migration and VCAM-1 expression in CXCL13-treated lung cancer cells (Figure 4D,E). Conclusively, these results identify the crucial role of CXCR5 receptor in regulating cell migration and

FIGURE 3 Vascular cell adhesion molecule-1 expression is responsible for CXCL13-promoted cell migration in lung cancer. A, The screening of candidate molecules associated with cell migration ability. The CL1-0 lung cancer cells were incubated with CXCL13 (30 ng/mL) for 24 h, follow by collecting RNA sample, then subjected to qPCR analysis to validate gene expression of candidate molecules which associated with cell migration ability. B and C, The CL1-0 lung cancer cells were incubated with different concentrations (0, 3, 10 and 30 ng/mL) of CXCL13 for 24 h, the RNA or cell lysate were collected, then subjected to analyse gene expression level of VCAM-1 by qPCR and Western blot. D and E, The CL1-0 lung cancer cells were treated with CXCL13 (30 ng/mL) for different time interval (0, 6, 12 and 24 h), the RNA or cell lysate were collected and then subjected to analyse gene expression level of VCAM-1 by qPCR and Western blot. F, The CL1-0 lung cancer cells were transfected with VCAM-1 siRNA for 24 h, and then, the expression level of VCAM-1 was confirmed by Western blot. G, The CL1-0 lung cancer cells transfected with VCAM-1 siRNA were subjected to analyse cell mobility in the presence of CXCL13 (30 ng/mL) by Transwell migration assay. H, The CL1-0 lung cancer cells transfected with CXCL13 shRNA were performed with qPCR to detect VCAM-1 expression level. I and J, The correlation analysis data of CXCL13 and VCAM-1 by using GEPIA bioinformatics tool. The boxplot analysis used \log_2 (TPM + 1) for log-scale. Results are expressed as the mean \pm SD of triplicate samples. * P < .05 compared to the control group. # P < .05 compared to the CXCL13-treated group

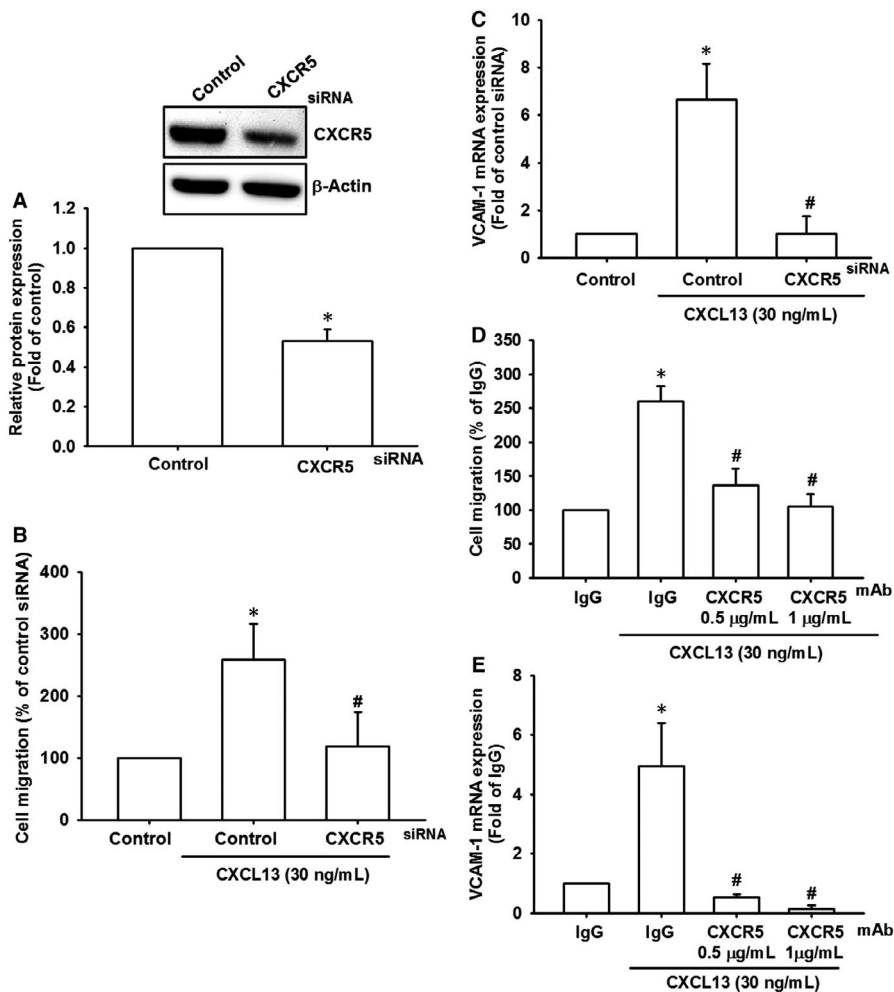


FIGURE 4 CXCR5 mediates the VCAM-1 expression and cell migration in response to CXCL13 incubation. A, The CL1-0 lung cancer cells were transfected with CXCR5 siRNA for 24 h, and the knockdown efficiency of CXCR5 was confirmed by Western blot. B and C, The CL1-0 lung cancer cells transfected with CXCR5 siRNA were further performed with cell migration assay B, in the presence of CXCL13 (30 ng/mL) for 24 h, as well as qPCR C, to detect VCAM-1 expression. D and E, The CL1-0 lung cancer cells were pre-incubated with CXCR5 neutralized antibody (0.5 and 1 μ g/mL) for 1 h and then performed with cell migration assay D, and qPCR E, in the presence of CXCL13 (30 ng/mL) for 24 h to evaluate cell migratory ability and VCAM-1 expression, respectively. Results are expressed as the mean \pm SD of triplicate samples. * P < .05 compared to the control group. # P < .05 compared to the CXCL13-treated group

VCAM-1 expression, which caused by CXCL13 incubation in lung cancer cells.

3.5 | Phospholipase C- β /PKC α /c-Src signalling pathways are required for CXCL13-promoted cell migration and VCAM-1 in lung cancer cells

The intracellular signalling pathways that activate transcription factors, and subsequently up-regulate gene expression, are crucial for cellular

biological functions. The chemokine receptor elicits multiple signalling pathways including the PLC/PKC, c-Src, JAK/STAT, PI $_3$ K/Akt and MAPK pathways.³¹ Here, we investigated whether CXCL13 activated these signalling pathways in lung cancer cells. The results indicated that pre-treatment with PLC β , PKC α and c-Src inhibitors (U73122, GF109203X and PP2) reversed CXCL13-promoted cell migration and VCAM-1 in lung cancer cells (Figure 5A,B). Moreover, incubation with CXCL13 obviously induced phosphorylation of PLC β , PKC α and c-Src (Figure 5C). Finally, we certified our finding by using siRNA to suppress these pathways activation, and the data showed that transfection with

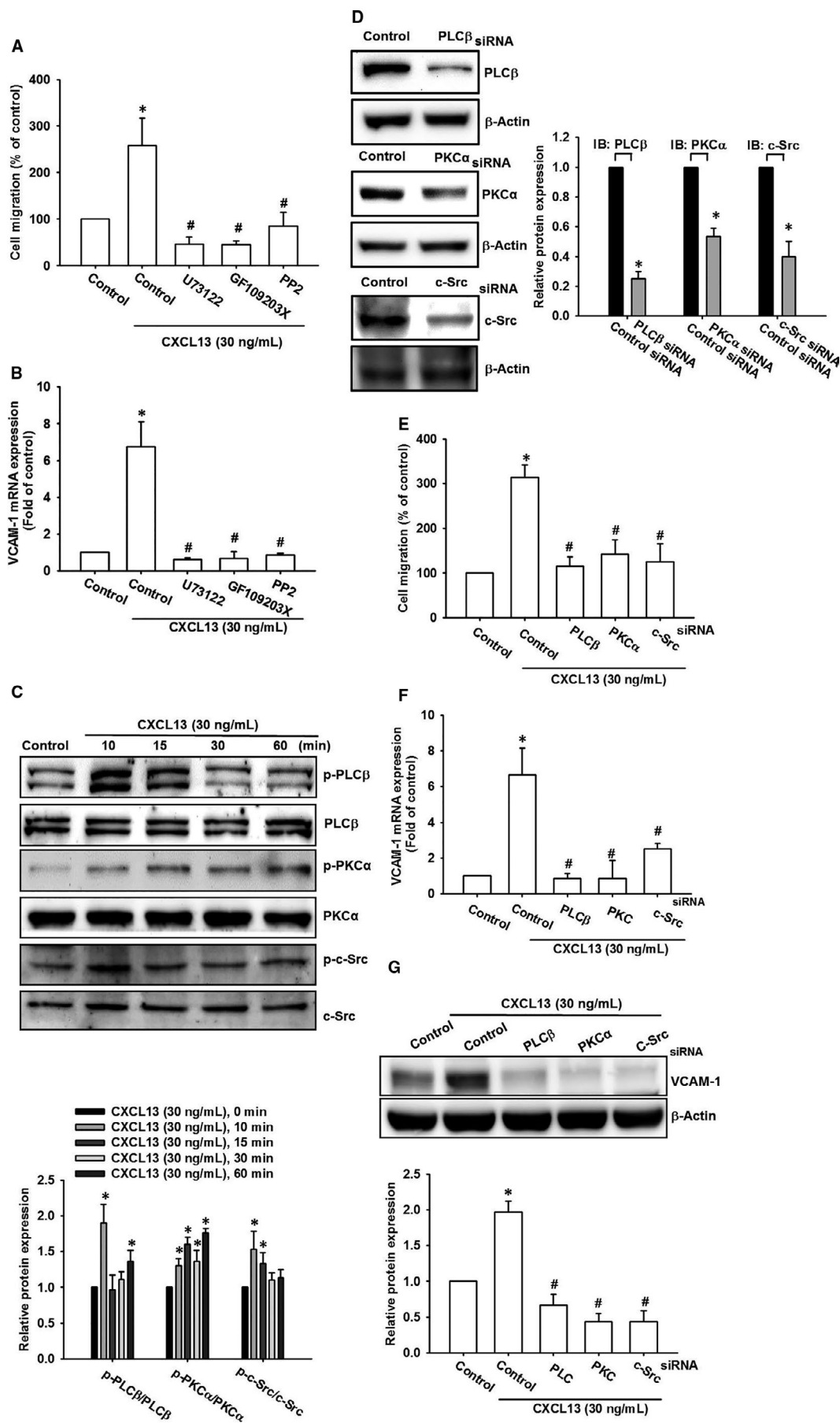


FIGURE 5 Phospholipase C- β /PKC α /c-Src signalling pathways are required for CXCL13-promoted cell migration and VCAM-1 in lung cancer cells. A and B, The CL1-0 lung cancer cells were pre-treatment with pathway inhibitors of PLC β , PKC α or c-Src (U73122, 0.5 μ mol/L; GF109203X, 3 μ mol/L; PP2, 5 μ mol/L) for 1 h and then performed with cell migration assay A, and qPCR B, in the presence of CXCL13 (30 ng/mL) for 24 h to evaluate cell migratory ability and VCAM-1 expression, respectively. C, The CL1-0 lung cancer cells were incubated with CXCL13 (30 ng/mL) for different time course (0, 10, 15, 30 and 60 min), the cell lysates were collected, and activation of PLC β , PKC α and c-Src signalling pathways was evaluated by monitoring phosphorylation of these proteins. The total proteins were used as internal control. D, The CL1-0 lung cancer cells were transfected with PLC β , PKC α or c-Src siRNAs for 24 h, and the knockdown efficiency was confirmed by using Western blot. E, The CL1-0 lung cancer cells transfected with PLC β , PKC α or c-Src siRNAs were further evaluated cell migration ability E, and VCAM-1 expression F and G, by using Transwell migration assay, qPCR and Western blot, respectively, in the presence of CXCL13 (30 ng/mL) for 24 h. Results are expressed as the mean \pm SD of triplicate samples. * P < .05 compared to the control group. # P < .05 compared to the CXCL13-treated group

PLC β , PKC α and c-Src siRNA apparently reversed cell migration and VCAM-1 expression after CXCL13 incubation (Figure 5D-G). These results suggest that the PLC β /PKC α /c-Src signalling pathways contribute to CXCL13-promoted cell migration in lung cancer cells.

3.6 | NF- κ B transcription factor is responsible for CXCL13-induced cell migration in lung cancer cells

NF- κ B is a crucial transcription factor and its activation is correlated with cancer cell migration and invasion.^{32,33} It is also a key downstream effector of chemokine receptor signalling.³¹ Therefore, we confirmed the activation of NF- κ B components after CXCL13 treatment in lung cancer cells. With pre-treatment of NF- κ B inhibitors PDTC and TPCK, cell migration and VCAM-1 were significantly abolished in CXCL13-incubated lung cancer cells (Figure 6A-C). Meanwhile, our results also showed that levels of phosphorylated p65, IKK α / β and I κ B α were up-regulated after 15-60 minutes of CXCL13 treatment (Figure 6D). Inhibition of NF- κ B signal activation by dominant negative mutants of IKK α and IKK β also decreased CXCL13-promoted cell migration and VCAM-1 expression (Figure 6E,F). We also checked whether CXCR5, PLC β , PKC α and c-Src were the upstream regulator of NF- κ B, with pre-treatment of CXCR5 neutralized antibody, PLC β , PKC α or c-Src inhibitors, the CXCL13-induced p65 nuclear translocation, representing for NF- κ B activation, was reversed by pre-treatment with CXCR5 neutralized antibody, PLC β , PKC α and c-Src inhibitors (Figure 7A), as well as p65 phosphorylation (Figure 7B). Finally, to further examine the transcriptional activation of NF- κ B is responsible for CXCL13 effects, the luciferase reporter assay was performed. The NF- κ B activity was significantly increased after CXCL13 treatment (Figure 7C). However, in the presence with pathway inhibitors or siRNAs of CXCR5, PLC β , PKC α and c-Src, the NF- κ B activity was reversed after CXCL13 treatment (Figure 7D,E). In conclusion, these evidences suggest that the CXCR5, PLC β , PKC α and c-Src signalling pathways mediate NF- κ B activation in lung cancer cells treated with CXCL13.

4 | DISCUSSION

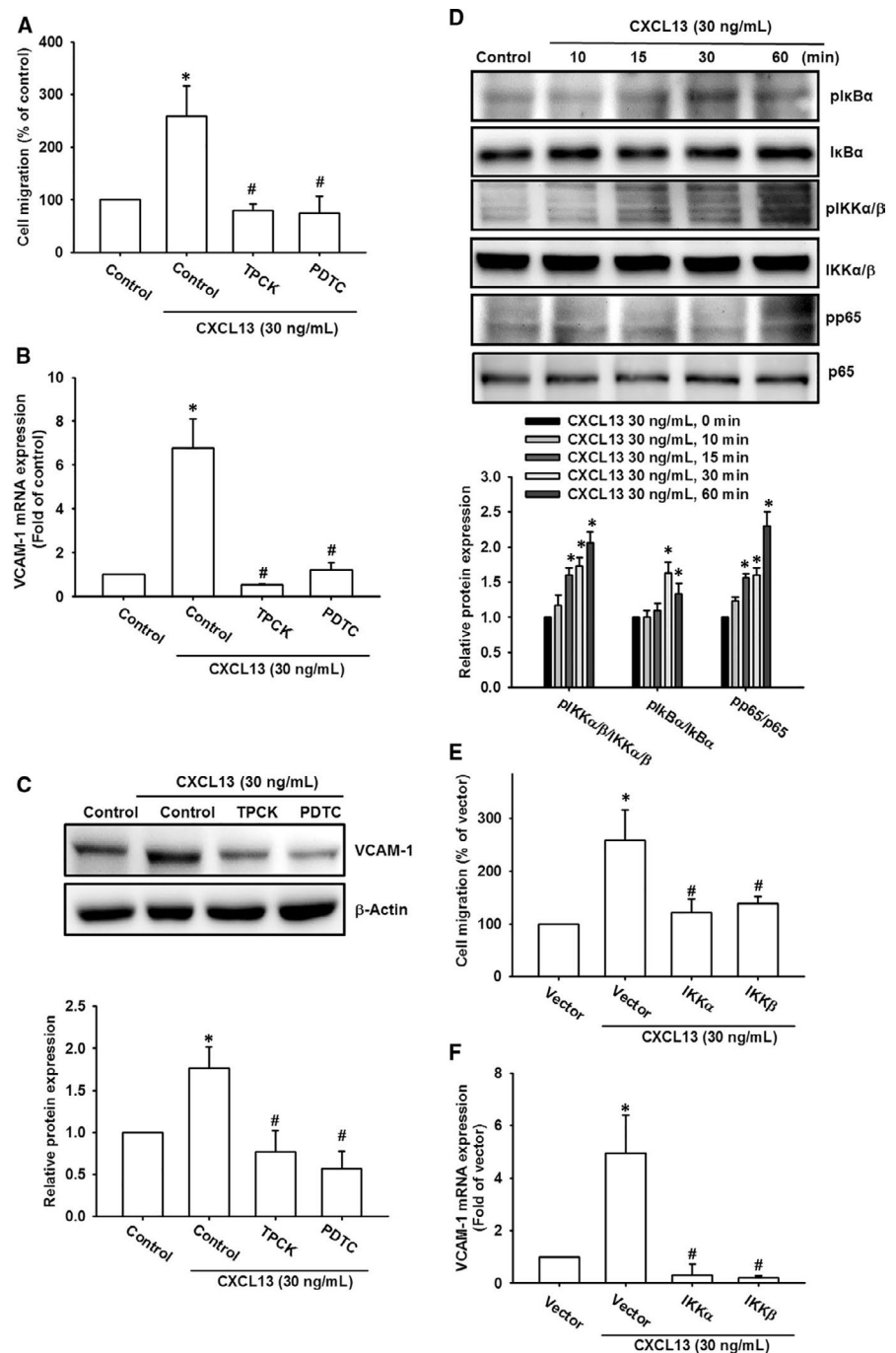
CXC chemokine ligand-13 and its corresponding receptor CXCR5 have been widely reported in various cancers.³⁴ However, the

prognostic value and pathological role of CXCL13/CXCR5 in lung cancer is still in its infancy. Here, we report the prognostic relevance of CXCL13/CXCR5 and found that they are commonly overexpressed among different subtypes of lung cancer. Previous report showed that high levels of CXCR5 and CXCL13 were up-regulated in tissues and sera of lung cancer patients respectively.³⁵ Here, we used online database to perform meta-analysis, and results indicated CXCL13 and CXCR5 were highly expressed in different data sets. This evidence suggests that CXCL13/CXCR5 axis activation is common feature in lung cancer progression. Recently, the therapeutic applications by targeting CXCL13/ CXCR5 axis have been summarized.³⁴ The strategies by using RNA interference and pharmacological intervention have been investigated in several studies and showed promising effects. Our present work reveals that CXCL13/CXCR5 axis could be a novel therapeutic target against lung cancer.

CXC chemokine ligand-13, first identified as BLC (B-lymphocyte chemoattractant) or BCA-1 (B cell-attracting chemokine 1), a homeostatic chemokine which attracting B lymphocytes while exhibiting a minor effect on T cells and macrophages.³⁶ Previous studies have proved that CXCL13 promotes cancer cells migration via different biological molecules, for example matrix metalloproteinase-9 (MMP9)³⁷ and MMP13.³⁸ Here, we found that VCAM-1, a cell adhesion molecule associated with metastasis, which was up-regulated in response to CXCL13 in lung cancer cells. VCAM-1 expression is reported to be closely implicated in the metastasis of many cancer cells. In breast cancer cells, VCAM-1 expression was up-regulated in the selected cancer cells which metastasized to lung.³⁹ In glioblastoma, VCAM-1 expression correlated with the clinicopathological grade of cancer.⁸ VCAM-1 expression was also found to be up-regulated in lung cancers.⁹ Here, we also investigated the correlation between CXCL13 and VCAM-1 in tissues of lung cancer patients. The highly correlation between CXCL13 and VCAM-1 supports our finding in vitro experiments. As previous study, the indication of VCAM-1 is a critical component requiring for lung cancer invasion and further metastasis.⁹ Our finding here supposes that CXCL13/CXCR5 axis is a major regulator of VCAM-1 up-regulation in lung cancer.

The signal activation downstream of CXCL13/CXCR5 axis has been discussed in several reports, and however, the whole scenario of CXCL13/CXCR5 is still poorly understood. In this study, we found PLC β /PKC α /c-Src signal cascade was activated after CXCL13 treatment in lung cancer cells. Furthermore, this activation was required for VCAM-1 expression and then cell migration. As the G

FIGURE 6 NF- κ B activation is responsible for CXCL13-induced cell migration and VCAM-1 expression in lung cancer cells. A–C, The CL1-0 lung cancer cells were pre-treatment with pathway inhibitors of NF- κ B (PDTC, 5 μ mol/L; TPCK, 5 μ mol/L) for 1 h and then performed with cell migration assay A, qPCR B, and Western blot C, in the presence of CXCL13 (30 ng/mL) for 24 h to evaluate cell migratory ability and VCAM-1 expression, respectively. D, The CL1-0 lung cancer cells were incubated with CXCL13 (30 ng/mL) for different time course (0, 10, 15, 30 and 60 min), the cell lysates were collected, and activation of NF- κ B signalling cascade was evaluated by monitoring phosphorylation of IKK α / β , I κ B α and p65 proteins. The total proteins were used as internal control. E and F, The CL1-0 lung cancer cells were transfected with dominant mutants of IKK α and IKK β for 24 h and then performed with cell migration assay E, and qPCR F, in the presence of CXCL13 (30 ng/mL) for 24 h to evaluate cell migratory ability and VCAM-1 expression, respectively. Results are expressed as the mean \pm SD of triplicate samples. * P < .05 compared to the control group. # P < .05 compared to the CXCL13-treated group



protein-coupled receptors (GPCRs), which forming chemokine ligand/receptor pair axes, commonly activates PLC/diacylglycerol (DAG)/PKC signal transduction.⁴⁰ PLC and PKC are important components of the phosphoinositide (PI) signalling system. The ability of PLC to produce DAG and IP₃, and its proven capacity to activate classical PKCs in some cell types.^{41,42} The PLC or PKC activation in response to CXCL13/CXCR5 axis has not been reported yet. This study first reports that CXCL13 stimulates PLC β and PKC α which participating cell migration effect. Mountain of evidence has indicated Src as a critical molecule in cancer progression including cell survival, angiogenesis, migration, invasion and metastasis.⁴³

Therefore, inhibition of Src activity provides potential strategy against tumour progression. Here, we found that Src was activated by CXCL13/CXCR5 axis and subsequently regulated cell migration in lung cancer cells. In accordance with Haibi et al⁴⁴ reported in prostate cancer, CXCL13/CXCR5-promoted cell migration and invasion was regulated by Src activation. In regard to the key role of Src in tumour progression, combination therapy of CXCL13/CXCR5 axis and Src inhibitors may provide clinical benefits in lung cancer treatment.

The transcription factor NF- κ B has been widely discussed in cancer progression and targeting NF- κ B as a therapeutic strategy has been explored extensively in the past decades. NF- κ B has been

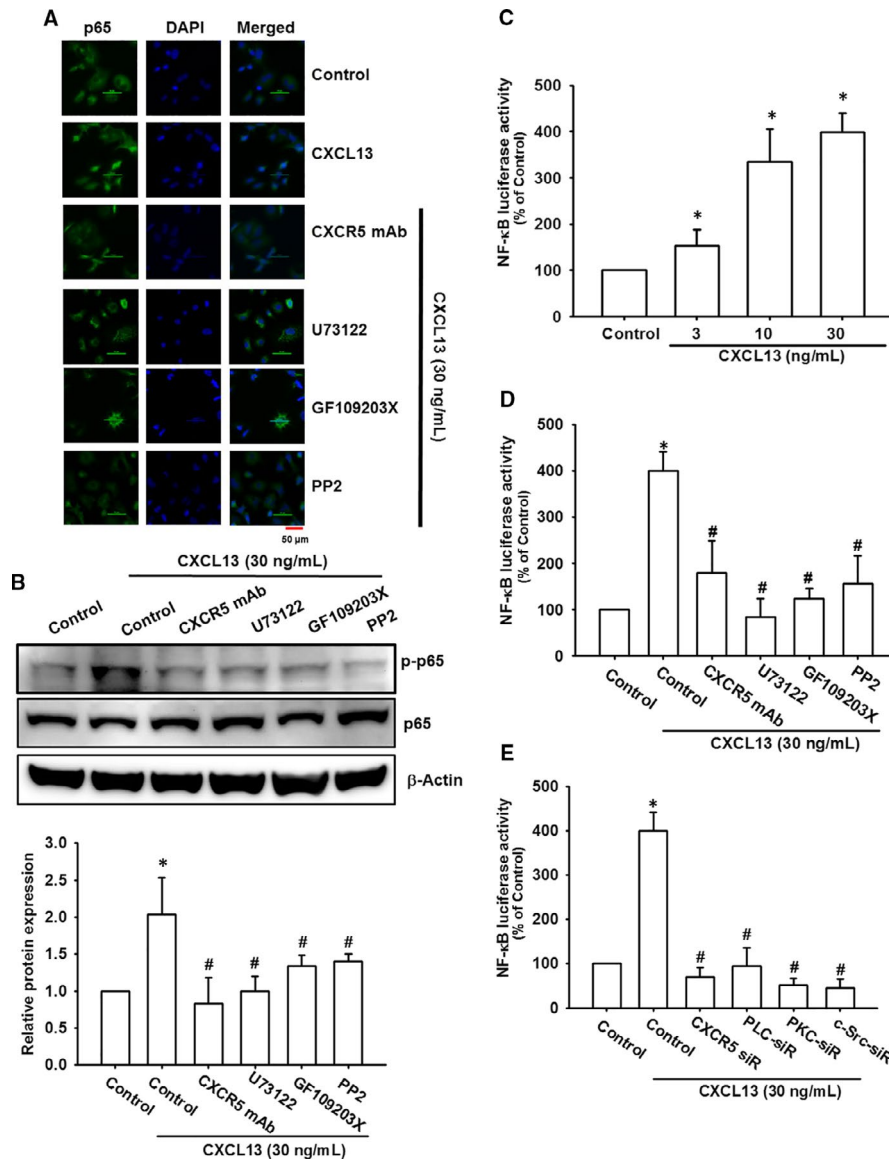


FIGURE 7 NF- κ B activation is downstream effector of CXCR5/PLC β /PKC α /c-Src signal cascade which contributes to VCAM-1 expression and cell migration in lung cancer cells. (A and B) The CL1-0 lung cancer cells were pre-incubated with CXCR5 neutralized antibody (1 μ g/mL), U73122 (0.5 μ mol/L), GF109230X (3 μ mol/L) or PP2 (5 μ mol/L) for 1 h, follow by incubated with CXCL13 (30 ng/mL) for 24 h. Then, immunofluorescence staining was performed with anti-p65 antibody. Nuclei were counterstained with DAPI. Representative microscopy images were shown A. The NF- κ B activation was monitored by phosphorylation of p65. The p65 and β -Actin were used as internal control B. C, The CL1-0 lung cancer cells were transfected with NF- κ B luciferase reporter vector for 24 h, follow by incubated with CXCL13 (30 ng/mL) for further 24 h. Then, luciferase activity assay was performed to examine NF- κ B activation. D, The CL1-0 lung cancer cells were transfected with NF- κ B luciferase reporter vector for 24 h, follow by incubated with CXCR5 neutralized antibody (1 μ g/mL), U73122 (0.5 μ mol/L), GF109230X (3 μ mol/L) or PP2 (5 μ mol/L) for 1 h, then exposed to CXCL13 (30 ng/mL) for further 24 h. Finally, the luciferase activity was performed to examine NF- κ B activation. E, The CL1-0 lung cancer cells were cotransfected with NF- κ B luciferase reporter vector in the presence of CXCR5, PLC β , PKC α or c-Src siRNAs for 24 h, follow by incubated with CXCL13 (30 ng/mL) for further 24 h. Then, luciferase activity assay was performed to examine NF- κ B activation. Results are expressed as the mean \pm SD of triplicate samples. * P < .05 compared to the control group. # P < .05 compared to the CXCL13-treated group

implicated in various cellular functions such as cell proliferation, apoptosis, angiogenesis, cell migration and invasion.⁴⁵ Previous review has summarized that NF- κ B is a downstream signalling effector of G protein-coupled receptor (GPCR), which is regulated by affecting upstream signal components or other transcription factors that coordinate with NF- κ B.⁴⁶ However, the activation of NF- κ B by

CXCR5, a member of GPCR super family, has never been reported yet. Our results indicated that NF- κ B signal pathway was activated by CXCL13/CXCR5 axis. Interestingly, previous reports have provided evidence that NF- κ B transcriptional activation was required for CXCL13 release or CXCR5 expression,^{47,48} revealing the pivotal role of NF- κ B in CXCL13/CXCR5 axis activation. Combined with our

finding here, the autocrine loop mediated by CXCL13/CXCR5 and NF- κ B may contribute to enhancement of cell migration effect.

In conclusion, our present study suggests that CXCL13/CXCR5 axis is up-regulated in lung cancer cells, which promotes VCAM-1 expression and further cell migration. We also decipher the molecular mechanism involved in regulation of this effect, which is achieved by PLC β /PKC α /c-Src signal cascade and NF- κ B transcription factor. Based on our finding here, the clinical relevance of CXCL13/CXCR5 in lung cancer progression and development of novel therapeutic targets should be addressed in the future.

CONFLICT OF INTEREST

The authors declare no competing interests.

AUTHOR CONTRIBUTIONS

Chia-Chia Chao: Investigation (lead); Project administration (lead); Writing-original draft (lead). **Wei-Fang Lee:** Investigation (supporting); Project administration (supporting). **Shih-Wei Wang:** Methodology (lead). **Po-Chun Chen:** Methodology (lead). **Ayaho Yamamoto:** Methodology (lead); Writing-original draft (lead). **Tsung-Ming Chang:** Investigation (lead). **Shun-Long Weng:** Funding acquisition (lead); Investigation (lead); Methodology (lead); Writing-original draft (lead); Writing-review & editing (lead). **Ju-Fang Liu:** Project administration (lead); Supervision (lead); Validation (lead); Writing-original draft (lead); Writing-review & editing (lead).

DATA AVAILABILITY STATEMENT

The data sets used and analysed during the current study are available from the corresponding author on reasonable request.

ORCID

Po-Chun Chen  <https://orcid.org/0000-0002-6325-3668>

Ju-Fang Liu  <https://orcid.org/0000-0002-0887-6096>

REFERENCES

- Jemal A, Siegel R, Ward E, Murray T, Xu J, Thun MJ. Cancer statistics, 2007. *CA: Cancer J Clin*. 2007;57:43-66.
- Fidler IJ. The pathogenesis of cancer metastasis: the 'seed and soil' hypothesis revisited. *Nat Rev Cancer*. 2003;3:453-458.
- Gupta GP, Massague J. Cancer metastasis: building a framework. *Cell*. 2006;127:679-695.
- Husemann Y, Geigl JB, Schubert F, et al. Systemic spread is an early step in breast cancer. *Cancer Cell*. 2008;13:58-68.
- Muller WA. Mechanisms of leukocyte transendothelial migration. *Annu Rev Pathol*. 2011;6:323-344.
- el-Sabban ME, Pauli BU. Adhesion-mediated gap junctional communication between lung-metastatic cancer cells and endothelium. *Invasion Metastasis*. 1994;14:164-176.
- Schlesinger M, Bendas G. Vascular cell adhesion molecule-1 (VCAM-1)—an increasing insight into its role in tumorigenicity and metastasis. *Int J Cancer*. 2015;136:2504-2514.
- Liu YS, Lin HY, Lai SW, et al. MiR-181b modulates EGFR-dependent VCAM-1 expression and monocyte adhesion in glioblastoma. *Oncogene*. 2017;36:5006-5022.
- Kim MR, Jang JH, Park CS, et al. A human antibody that binds to the sixth Ig-like domain of VCAM-1 blocks lung cancer cell migration in vitro. *Int J Mol Sci*. 2017;18:566.
- Scalici JM, Arapovic S, Saks EJ, et al. Mesothelium expression of vascular cell adhesion molecule-1 (VCAM-1) is associated with an unfavorable prognosis in epithelial ovarian cancer (EOC). *Cancer*. 2017;123:977-984.
- Taiwan Cancer Registry Annual Report: Department of Health and Welfare, Taiwan. 2014. <https://www.nhi.gov.tw>
- Lu X, Mu E, Wei Y, et al. VCAM-1 promotes osteolytic expansion of indolent bone micrometastasis of breast cancer by engaging alpha4beta1-positive osteoclast progenitors. *Cancer Cell*. 2011;20:701-714.
- Strieter RM. Chemokines: not just leukocyte chemoattractants in the promotion of cancer. *Nat Immunol*. 2001;2:285-286.
- Vandercappellen J, Van Damme J, Struyf S. The role of CXC chemokines and their receptors in cancer. *Cancer Lett*. 2008;267:226-244.
- Burger JA, Kipps TJ. CXCR4: a key receptor in the crosstalk between tumor cells and their microenvironment. *Blood*. 2006;107:1761-1767.
- Sun X, Cheng G, Hao M, et al. CXCL12/CXCR4/CXCR7 chemokine axis and cancer progression. *Cancer Metastasis Rev*. 2010;29:709-722.
- Muller A, Homey B, Soto H, et al. Involvement of chemokine receptors in breast cancer metastasis. *Nature*. 2001;410:50-56.
- Baay-Guzman GJ, Huerta-Yepez S, Vega MI, et al. Role of CXCL13 in asthma: novel therapeutic target. *Chest*. 2012;141:886-894.
- Rupprecht TA, Plate A, Adam M, et al. The chemokine CXCL13 is a key regulator of B cell recruitment to the cerebrospinal fluid in acute Lyme neuroborreliosis. *J Neuroinflammation*. 2009;6:42.
- El-Haibi CP, Singh R, Gupta P, et al. Antibody microarray analysis of signaling networks regulated by Cxcl13 and Cxcr5 in prostate cancer. *J Proteomics Bioinform*. 2012;5:177-184.
- Meijer J, Zeelenberg IS, Sipos B, Roos E. The CXCR5 chemokine receptor is expressed by carcinoma cells and promotes growth of colon carcinoma in the liver. *Cancer Res*. 2006;66:9576-9582.
- Li C, Kang D, Sun X, Liu Y, Wang J, Gao P. The Effect of C-X-C motif chemokine 13 on hepatocellular carcinoma associates with wnt signaling. *Biomed Res Int*. 2015;2015:345413.
- Burkle A, Niedermeier M, Schmitt-Graff A, Wierda WG, Keating MJ, Burger JA. Overexpression of the CXCR5 chemokine receptor, and its ligand, CXCL13 in B-cell chronic lymphocytic leukemia. *Blood*. 2007;110:3316-3325.
- Airoldi I, Cocco C, Morandi F, Prigione I, Pistoia V. CXCR5 may be involved in the attraction of human metastatic neuroblastoma cells to the bone marrow. *Cancer Immunol Immunother*. 2008;57:541-548.
- Tang D, Tao D, Fang Y, Deng C, Xu Q, Zhou J. TNF-alpha promotes invasion and metastasis via NF-kappa B pathway in oral squamous cell carcinoma. *Med Sci Monit Basic Res*. 2017;23:141-149.
- Tan P, Shi M, Lai L, et al. Regulative role of the CXCL13-CXCR5 axis in the tumor microenvironment. *Precis Clin Med*. 2018;1:49-56.
- Tang Z, Li C, Kang B, Gao G, Li C, Zhang Z. GEPIA: a web server for cancer and normal gene expression profiling and interactive analyses. *Nucleic Acids Res*. 2017;45:W98-W102.
- Lin JF, Tsai TF, Liao PC, et al. Benzyl isothiocyanate induces protective autophagy in human prostate cancer cells via inhibition of mTOR signaling. *Carcinogenesis*. 2013;34:406-414.
- Cai L, Lin S, Girard L, et al. LCE: an open web portal to explore gene expression and clinical associations in lung cancer. *Oncogene*. 2019;38:2551-2564.
- Pevzner V, Wolf I, Burgstahler R, Forster R, Lipp M. Regulation of expression of chemokine receptor BLR1/CXCR5 during B cell maturation. *Curr Top Microbiol Immunol*. 1999;246:79-84; discussion 5.
- Cojoc M, Peitzsch C, Trautmann F, Polishchuk L, Telegeev GD, Dubrovskaya A. Emerging targets in cancer management: role of the CXCL12/CXCR4 axis. *Onco Targets Ther*. 2013;6:1347-1361.
- Tang CH, Lu ME. Adiponectin increases motility of human prostate cancer cells via adipoR, p38, AMPK, and NF-kappaB pathways. *Prostate*. 2009;69:1781-1789.

33. Tang CH, Tan TW, Fu WM, Yang RS. Involvement of matrix metalloproteinase-9 in stromal cell-derived factor-1/CXCR4 pathway of lung cancer metastasis. *Carcinogenesis*. 2008;29:35-43.
34. Hussain M, Adah D, Tariq M, Lu Y, Zhang J, Liu J. CXCL13/CXCR5 signaling axis in cancer. *Life Sci*. 2019;227:175-186.
35. Singh R, Gupta P, Kloecker GH, Singh S, Lillard JW Jr. Expression and clinical significance of CXCR5/CXCL13 in human nonsmall cell lung carcinoma. *Int J Oncol*. 2014;45:2232-2240.
36. Gunn MD, Ngo VN, Ansel KM, Ekland EH, Cyster JG, Williams LT. A B-cell-homing chemokine made in lymphoid follicles activates Burkitt's lymphoma receptor-1. *Nature*. 1998;391:799-803.
37. Biswas S, Sengupta S, Roy Chowdhury S, et al. CXCL13-CXCR5 co-expression regulates epithelial to mesenchymal transition of breast cancer cells during lymph node metastasis. *Breast Cancer Res Treat*. 2014;143:265-276.
38. Zhu Z, Zhang X, Guo H, Fu L, Pan G, Sun Y. CXCL13-CXCR5 axis promotes the growth and invasion of colon cancer cells via PI3K/AKT pathway. *Mol Cell Biochem*. 2015;400:287-295.
39. Minn AJ, Gupta GP, Siegel PM, et al. Genes that mediate breast cancer metastasis to lung. *Nature*. 2005;436:518-524.
40. Rozengurt E. Mitogenic signaling pathways induced by G protein-coupled receptors. *J Cell Physiol*. 2007;213:589-602.
41. Poli A, Ramazzotti G, Matteucci A, et al. A novel DAG-dependent mechanism links PKCa and cyclin B1 regulating cell cycle progression. *Oncotarget*. 2014;5:11526-11540.
42. Dajani OF, Sandnes D, Melien O, et al. Role of diacylglycerol (DAG) in hormonal induction of S phase in hepatocytes: the DAG-dependent protein kinase C pathway is not activated by epidermal growth factor (EGF), but is involved in mediating the enhancement of responsiveness to EGF by vasopressin, angiotensin II, and norepinephrine. *J Cell Physiol*. 1999;180:203-214.
43. Summy JM, Gallick GE. Src family kinases in tumor progression and metastasis. *Cancer Metastasis Rev*. 2003;22:337-358.
44. El Haibi CP, Sharma PK, Singh R, et al. PI3Kp110-, Src-, FAK-dependent and DOCK2-independent migration and invasion of CXCL13-stimulated prostate cancer cells. *Mol Cancer*. 2010;9:85.
45. Xia Y, Shen S, Verma IM. NF-kappaB, an active player in human cancers. *Cancer Immunol Res*. 2014;2:823-830.
46. Fraser CC. G protein-coupled receptor connectivity to NF-kappaB in inflammation and cancer. *Int Rev Immunol*. 2008;27:320-350.
47. Garg R, Blando JM, Perez CJ, Abba MC, Benavides F, Kazanietz MG. Protein kinase C epsilon cooperates with PTEN loss for prostate tumorigenesis through the CXCL13-CXCR5 pathway. *Cell Rep*. 2017;19:375-388.
48. Mitkin NA, Hook CD, Schwartz AM, et al. p53-dependent expression of CXCR5 chemokine receptor in MCF-7 breast cancer cells. *Sci Rep*. 2015;5:9330.

How to cite this article: Chao C-C, Lee W-F, Wang S-W, et al. CXC chemokine ligand-13 promotes metastasis via CXCR5-dependent signalling pathway in non-small cell lung cancer. *J Cell Mol Med*. 2021;25:9128-9140. <https://doi.org/10.1111/jcmm.16743>