

Prevalence of Peri-Implantitis in Implants with Turned and Rough Surfaces: a Systematic Review

Nikola Saulacic¹, Benoit Schaller¹

¹Department of Cranio-Maxillofacial Surgery, Faculty of Medicine, University of Bern, Bern, Switzerland.

Corresponding Author:

Nikola Saulacic

Department of Cranio-Maxillofacial Surgery

Faculty of Medicine, University of Bern

Freiburgstrasse 10, CH-3010 Bern

Switzerland

Phone: +41 31 632 35 63

Fax: +41 31 382 02 79

E-mail: nikola.saulacic@insel.ch

ABSTRACT

Objectives: Moderately-rough implant surface may improve implant therapy in terms of bone integration, but the increased surface roughness might affect the initiation and development of peri-implantitis. The aim of the present review was to compare the prevalence of peri-implantitis in implants with rough and turned (machined) implant surfaces.

Material and Methods: An electronic literature search was conducted of the MEDLINE and EMBASE databases for articles published between 1 January 1990 and 1 March 2018. Clinical human studies in the English language that had reported on prevalence of peri-implantitis in turned and rough surface implants were searched. The initial search resulted in 690 articles.

Results: Eight articles with 2992 implants were included in the systematic review. The incidence of peri-implantitis for two implant surfaces varied between studies. A meta-analysis was not feasible due to the heterogeneity among studies. Implant with rough surfaces were more favourable for plaque accumulation during short-term follow-up. On a long-term, turned implants surfaces were associated with more plaque and higher peri-implant bone loss. Peri-implant clinical parameters and survival rate for two implant surfaces was similar.

Conclusions: Within the limitations of the present study, rough implant surface does not seem to increase the incidence of peri-implantitis in comparison to turned implants surface.

Keywords: dental implant; osseointegrated dental implantation; peri-implantitis; systematic review; titanium.

Accepted for publication: 12 March 2019

To cite this article:

Saulacic N, Schaller B.

Prevalence of Peri-Implantitis in Implants with Turned and Rough Surfaces: a Systematic Review

J Oral Maxillofac Res 2019;10(1):e1

URL: <http://www.ejomr.org/JOMR/archives/2019/1/e1/v10n1e1.pdf>

doi: [10.5037/jomr.2019.10101](https://doi.org/10.5037/jomr.2019.10101)

INTRODUCTION

Dental implant rehabilitation has become a standard procedure to replace the missing or hopeless teeth. Several longitudinal studies have reported high survival rates on a long-term of the implants over a period up to 10 years [1,2]. Different risk factors have been identified since first implants with turned, minimally rough surface (Sa 0.5 to 1 µm) were placed, including location and length of < 10 mm [3,4]. Many techniques have been developed including titanium plasma spraying, acid etching or grit blasting, with the aim of improving the osseointegration and decrease the possibility of early implant failure [5-7]. The introduction of new, moderately rough implant surface (Sa 1 to 2 µm) enhanced strongest bone response and are currently the most used [8,9]. Despite of these encouraging data, clinicians had to consider several types of complications that may be encountered. Marginal bone loss (MBL) around moderately rough implants was higher as compared to turned surface implant, without being significant [6,10-12].

Plaque-induced peri-implantitis is one of the most common late biological complication in dental implantology [13]. It can be defined as a site-specific condition characterized by an inflammatory reaction that involves the hard and soft tissue, with loss of supporting bone around osseointegrated dental implants [14-16]. Peri-implantitis is often associated with bleeding at the peri-implant margin after the insertion of a periodontal probe into the peri-implant space, increased peri-implant pocket-probing depth, mucosal recession, and/or suppuration [17]. Actually, the differential diagnosis between peri-mucositis and peri-implantitis relay on the supportive bone loss in addition to the inflammatory process around an implant [18]. The incidence of peri-implant mucositis ranged from 30.7 to 50% and for peri-implantitis from 9.6 to 40% of sites [19,20]. Numerous etiological factors play a role for the prevalence and progression of infection; micro and macro design of the implant, the abutment connection, the passivation of the prosthesis and excessive mechanical load were all related with the disease [21]. Furthermore, periodontitis and smoking are considered the two most common patient-related risk factors for biological problems [22-24]. If only one of these could starts a chain reaction leading to lesions, then they generally play the role of worsening factors each for the others [25]. Nevertheless, bacterial adhesion and biofilm formation on the implant surface is often an initial step in peri-implantitis.

Moderately-rough implant surface may improve implant therapy, but the increased surface roughness might affect the initiation and development of peri-implantitis [26]. When exposed to the oral environment, implants with rough surface may facilitate the accumulation of plaque [27,28], affecting the equilibrium with the host [29,30]. Consequently, implants with rough implant surface might lose more bone due to the peri-implantitis compared to implants with turned surfaces [6,31,32]. On the other hand, Pongnarisorn et al. [33] found that the development of the inflammation was associated with the presence of plaque, independent on the surface roughness. Quirynen et al. [34] analysed the biofilm from the subgingival area and showed no difference in the microbiota of turned and moderately rough, anodized implant surfaces. Furthermore, other authors found similar clinical outcome for implants with turned and moderately rough surfaces [7,11,35]. The currently available evidence does not provide any firm, specific confirmation that the incidence of peri-implantitis is related to the implant surface roughness [23,36,37]. Present review aimed to reveal if modern, rough surface implants display more peri-implantitis than older implants with turned surface. Patients' characteristics were considered as possible risk indicators for peri-implantitis, as assessed by clinical and radiographic parameters.

MATERIAL AND METHODS

Protocol and registration

The methods of the analysis and inclusion criteria were specified in advance and documented in a protocol. The review was registered in PROSPERO, an international prospective register of systematic reviews. The protocol can be accessed at:

<http://www.crd.york.ac.uk/PROSPERO/displayrecord.asp?ID=CRD42016051996>;

registration number: CRD42016051996.

The reporting of this systematic analysis adhered to the Preferred Reporting Items for Systematic Review and Meta-Analyses (PRISMA) Statement [38].

Focus question

The following focus question was developed according to the population, intervention, comparison, and outcome (PICO) study design.

PICOS guidelines

- Population: patients exhibiting at least one

osseointegrated solid screw-type implant diagnosed with peri-implantitis. All definitions of peri-implantitis were included.

- Interventions: dental implants with rough surface characteristics;
- Comparative: turned (machined) surface implants;
- Outcome: primary - occurrence of peri-implantitis; secondary - clinical parameters, bleeding on probing (BOP), suppuration (SUP), plaque accumulation and probing pocket depth (PD).

Question

Does the prevalence of peri-implantitis and the infection indicating clinical parameters like BOP, SUP, plaque accumulation, PD, is increased around implants with rough surfaces ($Sa > 1 \mu m$) as compared to implants with turned, minimally rough surface?

Information sources

A search was conducted on the National Library of Medicine database (MEDLINE) through its online site (PubMed) and EMBASE databases.

Literature search strategy

The search strategy incorporated the examination of electronic databases, supplemented by hand searches for articles published in English between 1 January 1990, and 1 March 2018. The following keywords were used: “periimplantitis” OR “peri-implantitis” OR “periimplant” OR “peri-implant” AND “prevalence” OR “incidence” OR “surface characteristics” OR “surface roughness” OR “implant surface” OR “turned” OR “machined”. Hand search was conducted in the following journals: Clinical Oral Implants Research, Clinical Implant Dentistry and Related Research, European Journal of Oral Implantology, Implant Dentistry, International Journal of Oral & Maxillofacial Implants, International Journal of Periodontics and Restorative Dentistry, Journal of Clinical Periodontology, Journal of Oral Implantology, International Journal of Oral and Maxillofacial Surgery, Journal of Periodontology, and Journal of Prosthetic Dentistry. The references of each relevant study were screened to discover additional relevant publications and to improve the sensitivity of the search.

Inclusion and exclusion criteria

The applied inclusion criteria for the studies were as follows:

- Human prospective and retrospective observational and controlled clinical studies evaluating prevalence of peri-implantitis in patients with osseointegrated rough-surface and turned (machined) surface solid screw-type type implants;
- Implants functioning of at least 1 year;
- At least 10 implants included;
- Studies from which smokers were not excluded;
- All peri-implantitis definitions were accepted;
- Studies reporting on peri-implantitis prevalence and/or plaque accumulation, BOP, SUP and PD.

The following types of articles were excluded as follows:

- *In vitro* and animal studies; studies based on charts or questionnaires;
- Studies of patients with only machined and only rough surface implants, or ceramic implants;
- Studies not focused specifically on the selected topic or that included unclear data;
- Literature reviews, case reports and editorials were not included.

Sequential search strategy

Titles and abstracts from this search were screened by reviewers based on the inclusion criteria. Two independent reviewers screened all selected abstracts for possible inclusion and determined the selection of full-text articles. Any disagreement was resolved through discussion, consulting a third part when consensus could not be reached.

Assessment of methodologic quality and synthesis of results

The quality of all included studies was assessed during the data extraction process. The quality appraisal involved evaluating the methodologic elements that might influence the outcomes of each study. The Cochrane Collaboration's two-part tool for assessing risk of bias [39] was used to assess bias across the studies and identify papers with intrinsic methodologic and design flaws. Relevant data of interest regarding the previously stated variables were collected and organized into tables.

Statistical analysis

A meta-analysis integrates the quantitative findings from separate but similar studies and provides a numerical estimate of the overall effect of interest. All analyses were performed on studies that reported the clinical and/or radiologic outcomes of different

peri-implantitis treatment methods. Thus, each study provided estimates of outcome measures (e.g., odds ratio [OR], relative risk). The goal was to obtain global estimates of these measures and to test whether they differed significantly. Global estimates of a proportion can be obtained by simply pooling together the data from each study. However, a test for significance cannot be applied to such pooled data, as these studies were heterogeneous with respect to study population and treatment protocol. This assumption was tested by the heterogeneity test using the Cochran Q statistics. The random-effects model (the Der Simonian and

Liard method [40]) was more appropriate to use since it took into account both the random variation within the studies and the variation among different studies, especially because in some cases the heterogeneity test yielded a low P value. Later findings indicated the fixed-effects model might be invalid.

RESULTS

Article review and data extraction were performed according to the PRISMA flow diagram (Figure 1).

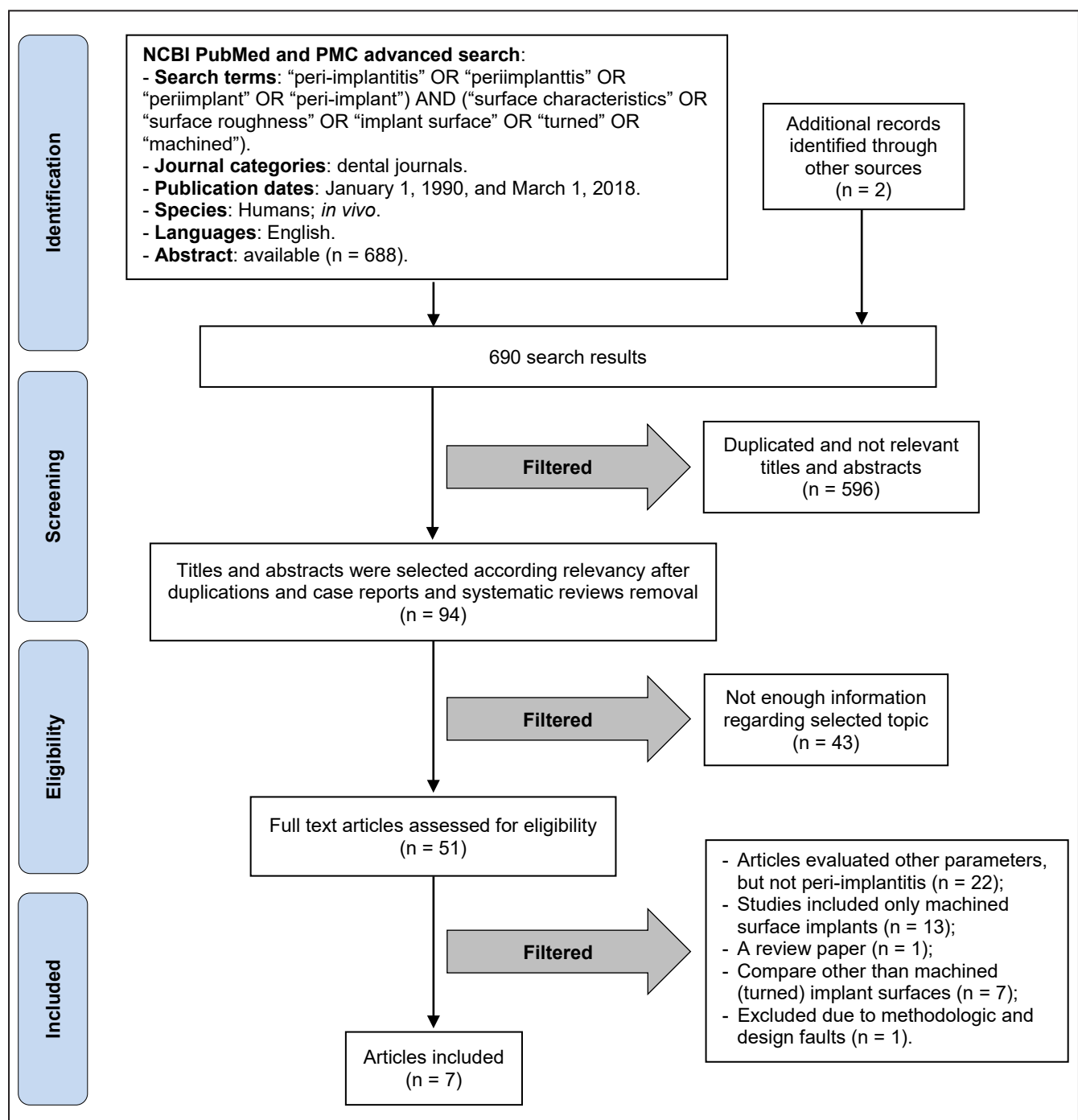


Figure 1. PRISMA flow diagram.

The initial search displayed 688 results from the MEDLINE (NCBI PubMed and PMC) and EMBASE databases and two results from other sources. A total of 690 search results were initially screened. The inclusion and exclusion criteria were applied to 51 full-text articles. Finally, seven articles were included in the review. A total of 2992 implants were included, 1083 having turned and 1909 having rough surface. From 331 implants diagnosed with peri-implantitis, 97 were with turned and 234 with rough surface (Table 1). The reasons for excluding studies after full-text assessment were as follows:

- articles evaluated other parameters, but not prevalence of peri-implantitis (n = 22);
- studies included only machined surface implants (n = 13); a review paper (n = 1);
- compare other than machined (turned) and rough implant surfaces (n = 7);
- methodologic and design faults (n = 1).

Data extraction

Out of the 8 included studies, information on the study type, follow-up period, number of patients and implants, implant type, prevalence of peri-implantitis and definition of the disease were retrieved (Table 1).

Information on the clinical parameters (i.e. BOP, plaque, SUP, PD) around rough and turned (machined) surface implants was extracted and presented in Table 2. Mean values and standard deviations, where available, were retrieved.

Patient related factors, including smoking habits, history of periodontitis, preoperative systemic antibiotics, rheumatologic conditions, diabetes, osteoporosis, immunosuppressive therapy are presented in Table 3.

Study characteristics

Four of the included studies were prospective [41-44], two retrospective [45,46] and one case - control study [47]. Half of the included studies evaluated implants that were in function more than 10 years [43-46]. Turned (minimally rough) implant surface was compared to rough, titanium-plasma sprayed [41-45] and moderately rough, sandblasted surfaces and oxidized [44,45,47] and sandblasted and chemically cleaned surfaces [46]. The definition of peri-implantitis greatly differed among the included studies (Table 1).

Quality assessment

Summarizing the risk of bias for each study, all studies were classified as unclear risk of bias for one or more key domains (Table 4). There was a significant heterogeneity among studies ($Q = 14.2447$; degrees of freedom [df] = 6; $P = 0.0270$; OR = 0.697; 95% confidence interval [CI] = 0.546 to 0.888).

Results of individual studies

Clinical parameters

Survival rate of implants was the same in most of the studies [41-44]. Only Polizzi et al. [45] found significantly more implant failures with turned surfaces ($P = 0.005$). Higher incidence of peri-implantitis was observed on rough surfaces [45], as well as on turned implant surfaces, with ($P = 0.015$) [47] and without statistical significant difference ($P > 0.05$) [44]. Vandeweghe et al. [46] observed no difference in incidence of peri-implantitis between two surfaces.

Five studies compared accumulation of plaque implants with turned and rough surfaces [41-45]. Turned implants surfaces were in favour of lower plaque accumulation at the prosthesis delivery [41,42], after 1 [41] and 13 years of loading [44]. Nevertheless, more plaque was found on turned from 6 to 10 years [45], at 7 years [44] and from 12 to 15 years following loading [43]. None of these differences was statistically significant.

A study by Moberg et al. [42] found significantly deeper probing PD in the turned surface implant group ($P < 0.05$), whereas Polizzi et al. [45] found significantly deeper probing pocket depths on palatal/lingual sites on rough surfaces ($P = 0.015$). Nevertheless, Polizzi et al. [45] detected also no difference on vestibular surfaces ($P = 0.373$) (Table 2). The frequency of implants with BOP was higher on turned implant surfaces during first 3 years ($P > 0.05$) [42] as well as at 7-year ($P = 0.01$) [44] and 13-year follow-up ($P > 0.05$) [44]. More BOP was also found on rough implant surfaces ($P > 0.05$) [43], but depended also on the time-point of observation [41] or a jaw [43]. Suppuration was more frequently detected on rough surfaces from 6 to 10 years follow up ($P > 0.05$) [44,45] and on turned surfaces at 13 years ($P > 0.05$) [44].

Two studies reported increased MBL on rough implant surfaces [42,43]. Interestingly, Vandeweghe et al. [46] found increased MBL by rough implant surfaces by multivariate ($P = 0.016$), but not by univariate analysis. Higher MBL on turned implant surface was found at base-line,

Table 1. Included studies

Study	Year of publication	Study design	Follow-up (years)	Number of implants/number of patients		Prevalence of peri-implantitis		Significance	Peri-implantitis definition
				Turned implants	Rough surface implants	Turned implants	Rough surface implants		
Astrand et al. [41]	2004	Continuity of the study Astrand et al. [41]. Prospective randomized study, split-mouth design	3	73 (Brånemark System®; Nobel Biocare AB, Goteborg, Sweden)/ 28 patients	77 (TPS®; Straumann AG, Waldenburg, Switzerland)/ 28 patients	0 implants	7 implants (9.1%)	The difference statistically significant	Infection including purulent discharge and bone loss
Moberg et al. [42]	2001	Prospective randomized study	3	102 (Brånemark System®;Nobel Biocare AB, Goteborg, Sweden)/ 20 patients	106 (TPS®; Straumann AG, Waldenburg, Switzerland)/ 20 patients	1 implants	3 implants	Not indicated	Peri-implant infection with bone reduction
Ravald et al. [43]	2012	Prospective randomized controlled study	12 - 15	177 (Brånemark System®; Nobel Biocare AB, Goteborg, Sweden)	176 (TPS®; Straumann AG, Waldenburg, Switzerland)	9 implants (5%)	10 implants (6%)	NR	Bone loss ≥ 2 mm and bleeding or pus on probing
Renvert et al. [44]	2012	Prospective clinical trial	13	102/22 patients machine-etched (Brånemark System®; Nobel Biocare AB, Goteborg, Sweden)	132 implants/19 patients (TiOblast™ implants; Astra Tech AB, Mölndal, Sweden)	12 implants (11.5%)	9 implants (7.1%)	No difference in the incidence of peri-implantitis over a period of 13 years as an effect implant surface and design was found.	Peri-implantitis incidence was defined as bone loss ≥ 1 mm after 1 year, and with BOP or suppuration
Polizzi et al. [45]	2013	Retrospective study (both types of implants in the same patient)	10	257 (Brånemark System®; Nobel Biocare AB, Goteborg, Sweden)/ 96 patients	243 moderately rough oxidized surfaced (TiUnite®; Nobel Biocare AB, Goteborg, Sweden)/ 96 patients	1 implant	9 implants	Peri-implantitis diagnosed in 4 patients (4.2%) and 10 implants (2%), 9 being TiUnite® implants and 1 turned (significance not indicated)	Mucosal lesion associated with suppuration and deepened pockets but always accompanied by loss of supporting marginal bone (Lindhe and Meyle [20])
Vandeweghe et al. [46]	2016	Retrospective study	At least 10 years in function (mean 172 [SD 42] months; range 120 to 252)	76 (Southern Implant System®; Southern Implants, Irene, South Africa)/ NR	121 moderately rough surface, obtained by sandblasting and chemical cleaning (Southern Implant System®; Southern Implants, Irene, South Africa)/ NR	NR	NR	Prevalence of peri-implantitis 4.1% in turned and moderately rough implants, with no significant difference between (P = 0.7)	PD > 6 mm in combination with BOP/ suppuration and attachment loss/bone loss of 2.5 mm
de Araújo Nobre and Malo [47]	2014	Case-control study	At least 1 year in function	296 (Brånemark System®; Nobel Biocare AB, Goteborg, Sweden)/ NR	1054 moderately rough oxidized surfaced (TiUnite®; Nobel Biocare AB, Goteborg, Sweden)/ NR	74 (5.5%)	196 (14.5%)	Machined implant surface identified as a risk factor for peri-implant pathology (P = 0.015; OR = 1.46)	Peri-implant pathology was diagnosed through: peri-implant pockets ≥ 5 mm diagnosed through probing of the peri-implant sulcus/pocket using a probe calibrated to 0.25 N, bleeding on probing; bone loss visible to X-ray; and attachment loss equal to or greater than 2 mm

TPS = titanium plasma sprayed; BOP = bleeding on probing; PD = probing depth; NR = not reported.

Table 2. Clinical parameters

Study	Plaque		Bleeding on probing		Suppuration		Pocket probing depth	
	Turned	Rough	Turned	Rough	Turned	Rough	Turned	Rough
Astrand et al. [41]	7.9%	9.1%	11.9%	7.5%	Not reported	Not reported	Not reported	Not reported
Moberg et al. [42]	37%	36%	14%	20%	Not reported	Not reported	≤ 3 mm: 96 % 3 to 5 mm: 4 %	≤ 3 mm: 97.5%; 3 to 5 mm: 2.5% (P < 0.05)
Ravald et al. [43]	Maxilla: 28 (31)%; mandible: 44 (40)%	Maxilla: 18 (22)%; mandible: 35 (32)%	Maxilla: 54 (18)%; mandible: 39 (17)%	Maxilla: 45 (12)%; mandible: 36 (16)%	Not reported	Not reported	1 to 3 mm: maxilla 47%, mandible 70%; 4 to 5 mm: maxilla 50%, mandible 26%; ≥ 6 mm: maxilla 3%, mandible 4%	1 to 3 mm: maxilla 49%, mandible 66%; 4 to 5 mm: maxilla 32%, mandible 23%; ≥ 6 mm: maxilla 19%, mandible 11%
Renvert et al. [44]	61.5%	64.3%	89.7%	82.1%	3.8%	1.2%	3.1 (2.2) mm	2.6 (2.3) mm
Polizzi et al. [45]	29 (29.2)%	14 (14.9)%	Not reported	Not reported	1 (1.1)%	4 (4.3)%	Verstibular: 2.51 (0.97) mm; palatal/lingual: 2.59 (0.82) mm	Verstibular: 2.53 (0.82) mm; palatal/lingual: 2.79 (0.97) mm (P = 0.015)
Vandeweghe et al. [46]	Not reported	Not reported	47.2% for all implants	Not reported	Not reported	Not reported	3.64 (0.96) mm (range 1.25 to 7.25 mm) for all implants	
de Araújo Nobre and Malo [47]	Not reported	Not reported	Not reported	Not reported	Not reported	Not reported	Not reported	Not reported

Table 3. Patient related factors

Author	Smoking	Periodontitis	Preoperative antibiotics	Rheumatologic condition	Diabetes	Osteoporosis	Immunosuppressive therapy
Astrand et al. [41]	Excluded > 20/day (7 patients < 20/day)	Excluded	Yes	Excluded	Excluded	Excluded	Excluded
Moberg et al. [42]	Excluded	Excluded	Not specified	Excluded	Excluded	Excluded	Excluded
Ravald et al. [43]	8 patients	Apparently excluded	Not specified	9 patients	5 patients	No	8 patients
Renvert et al. [44]	16 patients current and past	Included	Not specified	0 patients	0 patients	3 patients	Asthma 3, bronchitis 1, allergy 2 patients
Polizzi et al. [45]	Included 55.2%; previous 7.3%	1%	Not specified	Excluded	2.1%	1%	1%
Vandeweghe et al. [46]	5 patients	Excluded	Not specified	Excluded	Excluded	Excluded	Excluded
de Araújo Nobre and Malo [47]	Smoker 1.1%; ex-smoker 71.9%	60.5%	Not specified	10.7%	9.7%	0 %	2%

Table 4. Assessment of the risk of bias

Author	Random sequence generation	Allocation concealment	Blinding	Incomplete outcome data	Selective reporting	Other bias
Astrand et al. [41]	+	?	?	+	+	+
Moberg et al. [42]	?	?	?	+	?	+
Ravald et al. [43]	?	-	-	+	+	?
Renvert et al. [44]	?	?	?	+	+	+
Polizzi et al. [45]	?	?	?	+	+	?
Vandeweghe et al. [46]	?	?	?	+	+	+
de Araújo Nobre and Malo [47]	?	?	?	-	-	+

+ = low risk of bias; ? = unclear risk of bias; - = high risk of bias.

1 and 3 years ($P > 0.05$) [41,44], at 7-year ($P = 0.003$) [44], from 6 to 10 years ($P = 0.006$) [45] and at 13-year following loading ($P = 0.015$) [44]. Cumulative success rate was higher for turned than rough implant surfaces ($P > 0.05$) [42].

Patient related factors

Three studies included chronic periodontitis patients [44,45,47]. Renvert et al. [44] identify this patient related factor to statistically significantly influence peri-implantitis prevalence ($P < 0.001$). Furthermore, the likelihood of having MBL > 1 mm for patients with history of periodontitis was of 2.1 if having a systemic disease, independent on smoking status [44]. Smoking was reported in most of the studies. Ravald et al. [43] found increased MBL by smokers, whereas Vandeweghe et al. [46] couldn't confirm this relation neither by univariate ($P = 0.408$) nor multivariate analysis ($P = 0.259$).

Four studies involved patients having medical problems taking some kind of medication.

Nevertheless, rheumatologic condition [43,47], diabetes [43,45,47] or osteoporosis [44,45] *per se* were not related to the prevalence of peri-implantitis. Three investigations included also patients undergoing immunosuppressive therapy [43-45]. In line with the previously mentioned conditions, immunosuppressive therapy did not show to have a significant influence on peri-implantitis prevalence.

DISCUSSION

The aim of the present review was to assess if rough implant surface may be more prone to peri-implantitis as compared to the implants with older, turned surface [6,31,32]. The clinical parameters were similar for both implant surfaces, whereas implants with turned surfaces demonstrated higher MBL. Studies included in this review varied in the definition and incidence of peri-implantitis.

Turned implants surface seems to be less favourable for plaque accumulation during short-term follow-up

periods, but more favourable during later periods of follow-up. The smoothness of the implant surface is considered crucial determinant for biofilm formation [29,48], with a clinically confirmed threshold roughness (Ra 0.2 μm) [49,50]. Influence of surface roughness on the adhesion of microorganisms may be, however, compensated by the proceeding maturation of the oral biofilm [51] and rapid re-growth by multiplication of the remaining species rather than by recolonization [52]. As observed for plaque accumulation, most of the studies included in the present review revealed no significant difference in other clinical parameters around implants with rough as compared with the minimally rough surfaces. This corroborates previous findings on different transmucosal implant surfaces [33] and abutments [53] that failed to establish different inflammatory cell lesions despite of the various topographies. Nevertheless, a meta-analysis of the included studies was not feasible due to the significant heterogeneity among studies.

With eight different diagnostic criteria, peri-implantitis is still not a clearly defined condition [13]. Although “*itis*” stands for inflammation [18], the diagnosis of peri-implantitis may be quite challenging for the clinician. PD and BOP allows the ability to investigate the clinical conditions, but both parameters are considered weak indicators of ongoing breakdown of the peri-implant tissues [36,54,55]. Steady radiographic marginal bone level can occur in spite of the clinical symptoms of peri-implantitis [43,56]. PD levels of up to 9 mm may coincide with clinical success [57]. Roos-Jansåker et al. [5] found even increased BOP and suppuration around implants with bone gain than with bone loss. Nonetheless, peri-implantitis is considered a late complication and needs some time before it develops [58]. With a plethora of diagnostic criteria, it would be more appropriate to re-define the peri-implantitis by selecting an ongoing MBL truly threatening implant survival [36]. Significantly different MBL reached on a long-term follow-up in the included studies indicates that implants with turned surfaces may be more prone to peri-implantitis. Hence, modern oral implants are generally preferred over the old implant systems due to the stronger bone response [9].

Except plaque accumulation, the triggering mechanism behind bone loss may include foreign body reaction to cement and loading conditions [54]. Furthermore, the progressive MBL may be also triggered by the metal particles and metal ions resulting in an immune-osteolytic reaction [59]. An ongoing MBL related to immunological reaction mechanism result in cellular reactions, generating a

shift in the delicate balance between osteoblasts and the osteoclasts [36]. MBL associated with cement rests may be further coupled to the leakage of the Ti around dental implants [60,61]. Immunological problems may be further complicated by problems related to the patient. Still, these conditions seem to play no major impact on the incidence of peri-implantitis in the present review.

A history of periodontitis was identified as a risk factor for the survival and success rate of implants with rough surface [62,63]. Present review seems to confirm the previous findings that placement of implants with rough surface in the patients prone to peri-implantitis was not disadvantageous compared to implants with turned surface [35,64]. In a 10-year retrospective study Aglietta et al. [24] found lower implants survival rate and higher bone loss in periodontally compromised than periodontally healthy tobacco smokers, regardless of the implant system used. While smoking was initially related to the early healing events on implants with turned surface [65,66], later studies confirmed its impact irrespective of the type of implant surface [67,68]. Relation between smoking and the type of implant surface cannot be confirmed from the present review, as the analysed studies varied in defining the criteria for smokers (i.e. number of cigarettes a day).

According to the present review, it does not seem that the use of minimally instead of moderately rough surfaces would help to prevent peri-implantitis. Nevertheless, this assumption is limited by the quality of included studies. As previously quoted [37], there is still a lack of adequate studies on the impact of implant surface on the development of peri-implantitis. It might be expected that the patients included in the present review were closely monitored by the research teams. The status of oral hygiene might influence the presence of pathogens more than the surface characteristics [28]. Low incidence of peri-implantitis (1.9%) on a long-term was demonstrated for implants with oxidized surfaces when the patients with acceptable hygiene were scheduled for regular professional cleaning [69]. Supportive therapy was found essential for the long-term success of implant placed in periodontitis-susceptible patients [11,70]. Thus, the oral hygiene instructions and the importance of plaque control shall be consequently stressed to patients before and after implant placement [71,72]. Several concepts are presently under investigation aiming to combat the bacterial infection, including functional implant surfaces less prone to bacterial colonisation [73] and a more robust peri-implant functional seal [74].

Limitations

The evidence of this systematic review was limited to randomized, controlled clinical studies. Half of the studies included implants that were in function less than 10 years and evaluated presence of peri-implantitis as a secondary outcome. The definition of peri-implantitis varied significantly in included studies. Implants with rough surface ($Sa > 1 \mu m$) were pooled together and compared to implant with turned, minimally rough surface. All studies included in this review revealed an unclear or high risk of bias. The proportion of information from studies with unclear or high risk of bias may be sufficient to affect the interpretation of results.

CONCLUSIONS

The present systematic review revealed that only a few studies provide sufficient data for assessing peri-implantitis prevalence based on the implant surface characteristics (turned vs. rough surface). A meta-analysis was thus not feasible within the frames of the present study. The limited evidence suggests no strong correlation between rough surface implants and incidence of peri-implantitis when compared to turned implant surfaces.

ACKNOWLEDGMENTS AND DISCLOSURE STATEMENTS

The authors report no conflicts of interest related to this study.

REFERENCES

1. Lang NP, Berglundh T, Heitz-Mayfield LJ, Pjetursson BE, Salvi GE, Sanz M. Consensus statements and recommended clinical procedures regarding implant survival and complications. *Int J Oral Maxillofac Implants*. 2004;19 Suppl:150-4. [Medline: [15635955](#)]
2. Pjetursson BE, Tan K, Lang NP, Brägger U, Egger M, Zwahlen M. A systematic review of the survival and complication rates of fixed partial dentures (FPDs) after an observation period of at least 5 years. *Clin Oral Implants Res*. 2004 Dec;15(6):667-76. [Medline: [15533127](#)] [doi: [10.1111/j.1600-0501.2004.01120.x](#)]
3. Balshe AA, Assad DA, Eckert SE, Koka S, Weaver AL. A retrospective study of the survival of smooth- and rough-surface dental implants. *Int J Oral Maxillofac Implants*. 2009 Nov-Dec;24(6):1113-8. [Medline: [20162117](#)]
4. Friberg B, Jemt T. Clinical experience of TiUnite implants: a 5-year cross-sectional, retrospective follow-up study. *Clin Implant Dent Relat Res*. 2010 May;12 Suppl 1:e95-103. [Medline: [19673919](#)] [doi: [10.1111/j.1708-8208.2009.00222.x](#)]
5. Roos-Jansåker AM, Lindahl C, Renvert H, Renvert S. Nine- to fourteen-year follow-up of implant treatment. Part II: presence of peri-implant lesions. *J Clin Periodontol*. 2006 Apr;33(4):290-5. [Medline: [16553638](#)] [doi: [10.1111/j.1600-051X.2006.00906.x](#)]
6. Jemt T, Stenport V, Friberg B. Implant treatment with fixed prostheses in the edentulous maxilla. Part 1: implants and biologic response in two patient cohorts restored between 1986 and 1987 and 15 years later. *Int J Prosthodont*. 2011 Jul-Aug;24(4):345-55. [Medline: [21716973](#)]
7. Jungner M, Lundqvist P, Lundgren S. A retrospective comparison of oxidized and turned implants with respect to implant survival, marginal bone level and peri-implant soft tissue conditions after at least 5 years in function. *Clin Implant Dent Relat Res*. 2014 Apr;16(2):230-7. [Medline: [22727027](#)] [doi: [10.1111/j.1708-8208.2012.00473.x](#)]
8. Albrektsson T, Wennerberg A. Oral implant surfaces: Part 2--review focusing on clinical knowledge of different surfaces. *Int J Prosthodont*. 2004 Sep-Oct;17(5):544-64. [Medline: [15543911](#)]
9. Lang NP, Jepsen S; Working Group 4. Implant surfaces and design (Working Group 4). *Clin Oral Implants Res*. 2009 Sep;20 Suppl 4:228-31. [Medline: [19663968](#)] [doi: [10.1111/j.1600-0501.2009.01771.x](#)]
10. Gotfredsen K, Karlsson U. A prospective 5-year study of fixed partial prostheses supported by implants with machined and TiO₂-blasted surface. *J Prosthodont*. 2001 Mar;10(1):2-7. [Medline: [11406789](#)] [doi: [10.1111/j.1532-849X.2001.00002.x](#)]
11. Wennström JL, Ekstubb A, Gröndahl K, Karlsson S, Lindhe J. Oral rehabilitation with implant-supported fixed partial dentures in periodontitis-susceptible subjects. A 5-year prospective study. *J Clin Periodontol*. 2004 Sep;31(9):713-24. [Medline: [15312092](#)] [doi: [10.1111/j.1600-051X.2004.00568.x](#)]
12. Jacobs R, Pittayapat P, van Steenberghe D, De Mars G, Gijbels F, Van Der Donck A, Li L, Liang X, Van Assche N, Quirynen M, Naert I. A split-mouth comparative study up to 16 years of two screw-shaped titanium implant systems. *J Clin Periodontol*. 2010 Dec;37(12):1119-27. [Medline: [20874829](#)] [doi: [10.1111/j.1600-051X.2010.01626.x](#)]
13. Rosen P, Clem D, Cochran D, Froum S, McAllister B, Renvert S, Wang HL. Peri-implant mucositis and peri-implantitis: a current understanding of their diagnoses and clinical implications. *J Periodontol*. 2013 Apr;84(4):436-43. [Medline: [23537178](#)] [doi: [10.1902/jop.2013.134001](#)]

14. van Steenberghe D, Naert I, Jacobs R, Quirynen M. Influence of inflammatory reactions vs. occlusal loading on peri-implant marginal bone level. *Adv Dent Res*. 1999 Jun;13:130-5. [Medline: [11276735](#)] [doi: [10.1177/08959374990130010201](#)]
15. Esposito M, Thomsen P, Ericson LE, Lekholm U. Histopathologic observations on early oral implant failures. *Int J Oral Maxillofac Implants*. 1999 Nov-Dec;14(6):798-810. [Medline: [10612916](#)]
16. Quirynen M, Peeters W, Naert I, Coucke W, van Steenberghe D. Peri-implant health around screw-shaped c.p. titanium machined implants in partially edentulous patients with or without ongoing periodontitis. *Clin Oral Implants Res*. 2001 Dec;12(6):589-94. [Medline: [11737102](#)] [doi: [10.1034/j.1600-0501.2001.120606.x](#)]
17. Fransson C, Wennström J, Berglundh T. Clinical characteristics at implants with a history of progressive bone loss. *Clin Oral Implants Res*. 2008 Feb;19(2):142-7. [Medline: [18184340](#)] [doi: [10.1111/j.1600-0501.2007.01448.x](#)]
18. Zitzmann NU, Berglundh T. Definition and prevalence of peri-implant diseases. *J Clin Periodontol*. 2008 Sep;35(8 Suppl):286-91. [Medline: [18724856](#)] [doi: [10.1111/j.1600-051X.2008.01274.x](#)]
19. Atieh MA, Alsabeeha NH, Faggion CM Jr, Duncan WJ. The frequency of peri-implant diseases: a systematic review and meta-analysis. *J Periodontol*. 2013 Nov;84(11):1586-98. [Medline: [23237585](#)]
20. Lindhe J, Meyle J; Group D of European Workshop on Periodontology. Peri-implant diseases: Consensus Report of the Sixth European Workshop on Periodontology. *J Clin Periodontol*. 2008 Sep;35(8 Suppl):282-5. [Medline: [18724855](#)] [doi: [10.1111/j.1600-051X.2008.01283.x](#)]
21. Lang NP, Wilson TG, Corbet EF. Biological complications with dental implants: their prevention, diagnosis and treatment. *Clin Oral Implants Res*. 2000;11 Suppl 1:146-55. [Medline: [11168263](#)] [doi: [10.1034/j.1600-0501.2000.011S1146.x](#)]
22. Vervaeke S, Collaert B, Cosyn J, De Bruyn H. A 9-Year Prospective Case Series Using Multivariate Analyses to Identify Predictors of Early and Late Peri-Implant Bone Loss. *Clin Implant Dent Relat Res*. 2016 Feb;18(1):30-9. [Medline: [24995626](#)] [doi: [10.1111/cid.12255](#)]
23. Heitz-Mayfield LJ. Peri-implant diseases: diagnosis and risk indicators. *J Clin Periodontol*. 2008 Sep;35(8 Suppl):292-304. [Medline: [18724857](#)] [doi: [10.1111/j.1600-051X.2008.01275.x](#)]
24. Aglietta M, Siciliano VI, Rasperini G, Cafiero C, Lang NP, Salvi GE. A 10-year retrospective analysis of marginal bone-level changes around implants in periodontally healthy and periodontally compromised tobacco smokers. *Clin Oral Implants Res*. 2011 Jan;22(1):47-53. [Medline: [20831754](#)] [doi: [10.1111/j.1600-0501.2010.01977.x](#)]
25. Tonetti MS. Risk factors for osseodisintegration. *Periodontol* 2000. 1998 Jun;17:55-62. [Medline: [10337313](#)] [doi: [10.1111/j.1600-0757.1998.tb00123.x](#)]
26. Berglundh T, Gotfredsen K, Zitzmann NU, Lang NP, Lindhe J. Spontaneous progression of ligature induced peri-implantitis at implants with different surface roughness: an experimental study in dogs. *Clin Oral Implants Res*. 2007 Oct;18(5):655-61. [Medline: [17608738](#)] [doi: [10.1111/j.1600-0501.2007.01397.x](#)]
27. Mouhyi J, Dohan Ehrenfest DM, Albrektsson T. The peri-implantitis: implant surfaces, microstructure, and physicochemical aspects. *Clin Implant Dent Relat Res*. 2012 Apr;14(2):170-83. [Medline: [19843108](#)] [doi: [10.1111/j.1708-8208.2009.00244.x](#)]
28. Quirynen M, van der Mei HC, Bollen CM, Schotte A, Marechal M, Doornbusch GI, Naert I, Busscher HJ, van Steenberghe D. An in vivo study of the influence of the surface roughness of implants on the microbiology of supra- and subgingival plaque. *J Dent Res*. 1993 ep;72(9):1304-9. [Medline: [8395545](#)] [doi: [10.1177/00220345930720090801](#)]
29. Subramani K, Jung RE, Molenberg A, Hammerle CH. Biofilm on dental implants: a review of the literature. *Int J Oral Maxillofac Implants*. 2009 Jul-Aug;24(4):616-26. [Medline: [19885401](#)]
30. Teughels W, Van Assche N, Sliepen I, Quirynen M. Effect of material characteristics and/or surface topography on biofilm development. *Clin Oral Implants Res*. 2006 Oct;17 Suppl 2:68-81. [Medline: [16968383](#)] [doi: [10.1111/j.1600-0501.2006.01353.x](#)]
31. Esposito M, Ardebili Y, Worthington HV. Interventions for replacing missing teeth: different types of dental implants. *Cochrane Database Syst Rev*. 2014 Jul 22;(7):CD003815. [Medline: [25048469](#)] [doi: [10.1002/14651858.CD003815.pub4](#)]
32. Marrone A, Lasserre J, Bercy P, Brex MC. Prevalence and risk factors for peri-implant disease in Belgian adults. *Clin Oral Implants Res*. 2013 Aug;24(8):934-40. [Medline: [22551347](#)] [doi: [10.1111/j.1600-0501.2012.02476.x](#)]
33. Pongnarisorn NJ, Gemmell E, Tan AE, Henry PJ, Marshall RI, Seymour GJ. Inflammation associated with implants with different surface types. *Clin Oral Implants Res*. 2007 Feb;18(1):114-25. [Medline: [17224032](#)] [doi: [10.1111/j.1600-0501.2006.01304.x](#)]
34. Quirynen M, Van Assche N. RCT comparing minimally with moderately rough implants. Part 2: microbial observations. *Clin Oral Implants Res*. 2012 May;23(5):625-34. [Medline: [22093076](#)] [doi: [10.1111/j.1600-0501.2011.02255.x](#)]
35. Van Assche N, Coucke W, Teughels W, Naert I, Cardoso MV, Quirynen M. RCT comparing minimally with moderately rough implants. Part 1: clinical observations. *Clin Oral Implants Res*. 2012 May;23(5):617-24. [Medline: [22117732](#)] [doi: [10.1111/j.1600-0501.2011.02256.x](#)]
36. Albrektsson T, Canullo L, Cochran D, De Bruyn H. "Peri-Implantitis": A Complication of a Foreign Body or a Man-Made "Disease". Facts and Fiction. *Clin Implant Dent Relat Res*. 2016 Aug;18(4):840-9. [Medline: [27238274](#)] [doi: [10.1111/cid.12427](#)]
37. Renvert S, Polyzois I, Claffey N. How do implant surface characteristics influence peri-implant disease? *J Clin Periodontol*. 2011 Mar;38 Suppl 11:214-22. [Medline: [21323717](#)] [doi: [10.1111/j.1600-051X.2010.01661.x](#)]

38. Moher D, Liberati A, Tetzlaff J, Altman DG; PRISMA Group. Preferred reporting items for systematic reviews and meta-analyses: the PRISMA statement. *J Clin Epidemiol*. 2009 Oct;62(10):1006-12. [Medline: [19631508](#)] [doi: [10.1016/j.jclinepi.2009.06.005](#)]
39. Higgins JPT, Green S. *Cochrane Handbook for Systematic Reviews of Interventions* version 5.1.0. The Cochrane Collaboration, 2011. [URL: <http://training.cochrane.org/handbook>]
40. DerSimonian R, Kacker R. Random-effects model for meta-analysis of clinical trials: an update. *Contemp Clin Trials*. 2007 Feb;28(2):105-14. [Medline: [16807131](#)] [doi: [10.1016/j.cct.2006.04.004](#)]
41. Astrand P, Engquist B, Anzén B, Bergendal T, Hallman M, Karlsson U, Kvint S, Lysell L, Rundcranz T. A three-year follow-up report of a comparative study of ITI Dental Implants and Brånemark System implants in the treatment of the partially edentulous maxilla. *Clin Implant Dent Relat Res*. 2004;6(3):130-41. [Medline: [15726847](#)] [doi: [10.1111/j.1708-8208.2004.tb00213.x](#)]
42. Moberg LE, Köndell PA, Sagulin GB, Bolin A, Heimdahl A, Gynther GW. Brånemark System and ITI Dental Implant System for treatment of mandibular edentulism. A comparative randomized study: 3-year follow-up. *Clin Oral Implants Res*. 2001 Oct;12(5):450-61. [Medline: [11564104](#)] [doi: [10.1034/j.1600-0501.2001.120504.x](#)]
43. Ravald N, Dahlgren S, Teiwik A, Gröndahl K. Long-term evaluation of Astra Tech and Brånemark implants in patients treated with full-arch bridges. Results after 12-15 years. *Clin Oral Implants Res*. 2013 Oct;24(10):1144-51. [Medline: [22762251](#)] [doi: [10.1111/j.1600-0501.2012.02524.x](#)]
44. Renvert S, Lindahl C, Rutger Persson G. The incidence of peri-implantitis for two different implant systems over a period of thirteen years. *J Clin Periodontol*. 2012 Dec;39(12):1191-7. [Medline: [23151295](#)] [doi: [10.1111/jcpe.12017](#)]
45. Polizzi G, Gualini F, Friberg B. A two-center retrospective analysis of long-term clinical and radiologic data of TiUnite and turned implants placed in the same mouth. *Int J Prosthodont*. 2013 Jul-Aug;26(4):350-8. [Medline: [23837166](#)] [doi: [10.11607/ijp.3386](#)]
46. Vandeweghe S, Ferreira D, Vermeersch L, Mariën M, De Bruyn H. Long-term retrospective follow-up of turned and moderately rough implants in the edentulous jaw. *Clin Oral Implants Res*. 2016 Apr;27(4):421-6. [Medline: [25856319](#)] [doi: [10.1111/clr.12602](#)]
47. de Araújo Nobre MA, Maló P. The influence of rehabilitation characteristics in the incidence of peri-implant pathology: a case-control study. *J Prosthodont*. 2014 Jan;23(1):21-30. [Medline: [24383537](#)] [doi: [10.1111/jopr.12114](#)]
48. Yeo IS, Kim HY, Lim KS, Han JS. Implant surface factors and bacterial adhesion: a review of the literature. *Int J Artif Organs*. 2012 Oct;35(10):762-72. [Medline: [23138699](#)] [doi: [10.5301/ijao.5000154](#)]
49. Bollen CM, Papaioanno W, Van Eldere J, Schepers E, Quirynen M, van Steenberghe D. The influence of abutment surface roughness on plaque accumulation and peri-implant mucositis. *Clin Oral Implants Res*. 1996 Sep;7(3):201-11. [Medline: [9151584](#)] [doi: [10.1034/j.1600-0501.1996.070302.x](#)]
50. Quirynen M, Bollen CM, Papaioannou W, Van Eldere J, van Steenberghe D. The influence of titanium abutment surface roughness on plaque accumulation and gingivitis: short-term observations. *Int J Oral Maxillofac Implants*. 1996 Mar-Apr;11(2):169-78. [Medline: [8666447](#)]
51. Al-Ahmad A, Wiedmann-Al-Ahmad M, Faust J, Bächle M, Follo M, Wolkewitz M, Hannig C, Hellwig E, Carvalho C, Kohal R. Biofilm formation and composition on different implant materials in vivo. *J Biomed Mater Res B Appl Biomater*. 2010 Oct;95(1):101-9. [Medline: [20725954](#)] [doi: [10.1002/jbm.b.31688](#)]
52. Quirynen M, Bollen CM. The influence of surface roughness and surface-free energy on supra- and subgingival plaque formation in man. A review of the literature. *J Clin Periodontol*. 1995 Jan;22(1):1-14. [Medline: [7706534](#)] [doi: [10.1111/j.1600-051X.1995.tb01765.x](#)]
53. Zitzmann NU, Abrahamsson I, Berglundh T, Lindhe J. Soft tissue reactions to plaque formation at implant abutments with different surface topography. An experimental study in dogs. *J Clin Periodontol*. 2002 May;29(5):456-61. [Medline: [12060429](#)] [doi: [10.1034/j.1600-051X.2002.290511.x](#)]
54. De Bruyn H, Vandeweghe S, Ruyffelaert C, Cosyn J, Sennerby L. Radiographic evaluation of modern oral implants with emphasis on crestal bone level and relevance to peri-implant health. *Periodontol* 2000. 2013 Jun;62(1):256-70. [Medline: [23574471](#)] [doi: [10.1111/prd.12004](#)]
55. Smeets R, Henningsen A, Jung O, Heiland M, Hammächer C, Stein JM. Definition, etiology, prevention and treatment of peri-implantitis--a review. *Head Face Med*. 2014 Sep 3;10:34. [Medline: [25185675](#)] [PMC free article: [4164121](#)] [doi: [10.1186/1746-160X-10-34](#)]
56. Dierens M, Vandeweghe S, Kisch J, Nilner K, De Bruyn H. Long-term follow-up of turned single implants placed in periodontally healthy patients after 16-22 years: radiographic and peri-implant outcome. *Clin Oral Implants Res*. 2012 Feb;23(2):197-204. [Medline: [21732984](#)] [doi: [10.1111/j.1600-0501.2011.02212.x](#)]
57. Bergenblock S, Andersson B, Fürst B, Jemt T. Long-term follow-up of CeraOne™ single-implant restorations: an 18-year follow-up study based on a prospective patient cohort. *Clin Implant Dent Relat Res*. 2012 Aug;14(4):471-9. [Medline: [20586784](#)] [doi: [10.1111/j.1708-8208.2010.00290.x](#)]
58. Fransson C, Wennström J, Tomasi C, Berglundh T. Extent of peri-implantitis-associated bone loss. *J Clin Periodontol*. 2009 Apr;36(4):357-63. [Medline: [19426183](#)] [doi: [10.1111/j.1600-051X.2009.01375.x](#)]
59. Vasconcelos DM, Santos SG, Lamghari M, Barbosa MA. The two faces of metal ions: From implants rejection to tissue repair/regeneration. *Biomaterials*. 2016 Apr;84:262-275. [Medline: [26851391](#)] [doi: [10.1016/j.biomaterials.2016.01.046](#)]

60. Wilson TG Jr, Valderrama P, Burbano M, Blansett J, Levine R, Kessler H, Rodrigues DC. Foreign bodies associated with peri-implantitis human biopsies. *J Periodontol*. 2015 Jan;86(1):9-15. [Medline: [25224174](#)] [doi: [10.1902/jop.2014.140363](#)]
61. Wennerberg A, Ide-Ektessabi A, Hatkamata S, Sawase T, Johansson C, Albrektsson T, Martinelli A, Södervall U, Odelius H. Titanium release from implants prepared with different surface roughness. *Clin Oral Implants Res*. 2004 Oct;15(5):505-12. [Medline: [15355391](#)] [doi: [10.1111/j.1600-0501.2004.01053.x](#)]
62. Mengel R, Flores-de-Jacoby L. Implants in regenerated bone in patients treated for generalized aggressive periodontitis: a prospective longitudinal study. *Int J Periodontics Restorative Dent*. 2005 Aug;25(4):331-41. [Medline: [16089041](#)]
63. De Boever AL, Quirynen M, Coucke W, Theuniers G, De Boever JA. Clinical and radiographic study of implant treatment outcome in periodontally susceptible and non-susceptible patients: a prospective long-term study. *Clin Oral Implants Res*. 2009 Dec;20(12):1341-50. [Medline: [19793321](#)] [doi: [10.1111/j.1600-0501.2009.01750.x](#)]
64. Nicu EA, Van Assche N, Coucke W, Teughels W, Quirynen M. RCT comparing implants with turned and anodically oxidized surfaces: a pilot study, a 3-year follow-up. *J Clin Periodontol*. 2012 Dec;39(12):1183-90. [Medline: [23151294](#)] [doi: [10.1111/jcpe.12022](#)]
65. Watzak G, Zechner W, Busenlechner D, Arnhart C, Gruber R, Watzek G. Radiological and clinical follow-up of machined- and anodized-surface implants after mean functional loading for 33 months. *Clin Oral Implants Res*. 2006 Dec;17(6):651-7. [Medline: [17092223](#)] [doi: [10.1111/j.1600-0501.2006.01275.x](#)]
66. Balshe AA, Eckert SE, Koka S, Assad DA, Weaver AL. The effects of smoking on the survival of smooth- and rough-surface dental implants. *Int J Oral Maxillofac Implants*. 2008 Nov-Dec;23(6):1117-22. [Medline: [19216282](#)]
67. Stoker G, van Waas R, Wismeijer D. Long-term outcomes of three types of implant-supported mandibular overdentures in smokers. *Clin Oral Implants Res*. 2012 Aug;23(8):925-9. [Medline: [21722193](#)] [doi: [10.1111/j.1600-0501.2011.02237.x](#)]
68. Arnhart C, Dvorak G, Trefil C, Huber C, Watzek G, Zechner W. Impact of implant surface topography: a clinical study with a mean functional loading time of 85 months. *Clin Oral Implants Res*. 2013 Sep;24(9):1049-54. [Medline: [22591462](#)]
69. Östman PO, Hellman M, Sennerby L. Ten years later. Results from a prospective single-centre clinical study on 121 oxidized (TiUnite™) Brånemark implants in 46 patients. *Clin Implant Dent Relat Res*. 2012 Dec;14(6):852-60. [Medline: [22642261](#)] [doi: [10.1111/j.1708-8208.2012.00453.x](#)]
70. Hardt CR, Gröndahl K, Lekholm U, Wennström JL. Outcome of implant therapy in relation to experienced loss of periodontal bone support: a retrospective 5- year study. *Clin Oral Implants Res*. 2002 Oct;13(5):488-94. [Medline: [12453125](#)] [doi: [10.1034/j.1600-0501.2002.130507.x](#)]
71. Lindquist LW, Carlsson GE, Jemt T. A prospective 15-year follow-up study of mandibular fixed prostheses supported by osseointegrated implants. Clinical results and marginal bone loss. *Clin Oral Implants Res*. 1996 Dec;7(4):329-36. Erratum in: *Clin Oral Implants Res* 1997 Aug;8(4):342. [Medline: [9151599](#)] [doi: [10.1034/j.1600-0501.1996.070405.x](#)]
72. Serino G, Ström C. Peri-implantitis in partially edentulous patients: association with inadequate plaque control. *Clin Oral Implants Res*. 2009 Feb;20(2):169-74. [Medline: [19077152](#)] [doi: [10.1111/j.1600-0501.2008.01627.x](#)]
73. Cucchi A, Molè F, Rinaldi L, Marchetti C, Corinaldesi G. The Efficacy of an Anatase-Coated Collar Surface in Inhibiting the Bacterial Colonization of Oral Implants: A Pilot Prospective Study in Humans. *Int J Oral Maxillofac Implants*. 2018 Mar/Apr;33(2):395-404. [Medline: [29534128](#)] [doi: [10.11607/jomi.5880](#)]
74. Maeno M, Lee C, Kim DM, Da Silva J, Nagai S, Sugawara S, Nara Y, Kihara H, Nagai M. Function of Platelet-Induced Epithelial Attachment at Titanium Surfaces Inhibits Microbial Colonization. *J Dent Res*. 2017 Jun;96(6):633-639. [Medline: [28086031](#)] [doi: [10.1177/0022034516688888](#)]

To cite this article:

Saulacic N, Schaller B.

Prevalence of Peri-Implantitis in Implants with Turned and Rough Surfaces: a Systematic Review

J Oral Maxillofac Res 2019;10(1):e1URL: <http://www.ejomr.org/JOMR/archives/2019/1/e1/v10n1e1.pdf>doi: [10.5037/jomr.2019.10101](#)

Copyright © Saulacic N, Schaller B. Published in the JOURNAL OF ORAL & MAXILLOFACIAL RESEARCH (<http://www.ejomr.org>), 31 March 2019.

This is an open-access article, first published in the JOURNAL OF ORAL & MAXILLOFACIAL RESEARCH, distributed under the terms of the [Creative Commons Attribution-Noncommercial-No Derivative Works 3.0 Unported License](#), which permits unrestricted non-commercial use, distribution, and reproduction in any medium, provided the original work and is properly cited. The copyright, license information and link to the original publication on (<http://www.ejomr.org>) must be included.