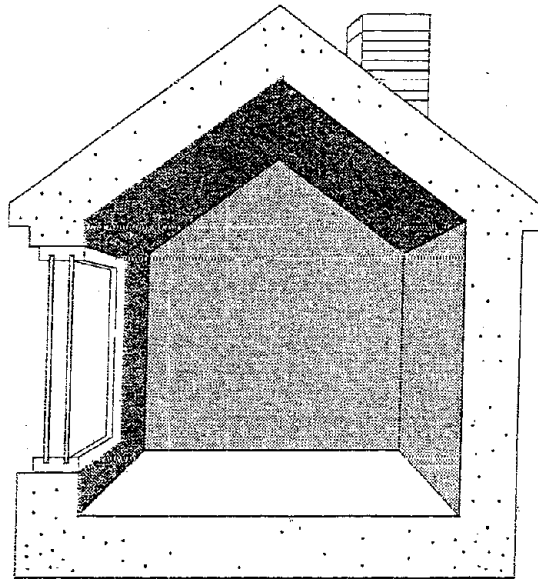


**State of Maine
Residential Heating Oil Survey
2001-02 Season Summary**



Submitted to the U.S. Department of Energy
May 2002 by the
Maine State Planning Office
Betsy Elder

DISCLAIMER

This report was prepared as an account of work sponsored by an agency of the United States Government. Neither the United States Government nor any agency thereof, nor any of their employees, make any warranty, express or implied, or assumes any legal liability or responsibility for the accuracy, completeness, or usefulness of any information, apparatus, product, or process disclosed, or represents that its use would not infringe privately owned rights. Reference herein to any specific commercial product, process, or service by trade name, trademark, manufacturer, or otherwise does not necessarily constitute or imply its endorsement, recommendation, or favoring by the United States Government or any agency thereof. The views and opinions of authors expressed herein do not necessarily state or reflect those of the United States Government or any agency thereof.

DISCLAIMER

Portions of this document may be illegible in electronic image products. Images are produced from the best available original document.

State of Maine Residential Heating Oil Survey 2001-02 Season Summary

Table of Contents

	Page Number
2001-02 Maine Price Trends for No. 2 Heating Oil	1
2001-02 Heating Oil Season Summary.....	3
Maine No. 2 Heating Oil Regional Price Survey.....	4
Maine Heating Oil Inventories 2001-02	6
Kerosene	8
Maine Kerosene Inventories 2001-02	9
Propane	10
State Interagency Energy Planning Team.....	12
Acknowledgements.....	12
Appendices.....	13
DOE/EIA 2001-02 Heating Oil and Propane Price Survey Spreadsheet.....	14
2001-02 Residential Heating Oil/Kerosene Price Survey Spreadsheet	16

Graphs/Charts

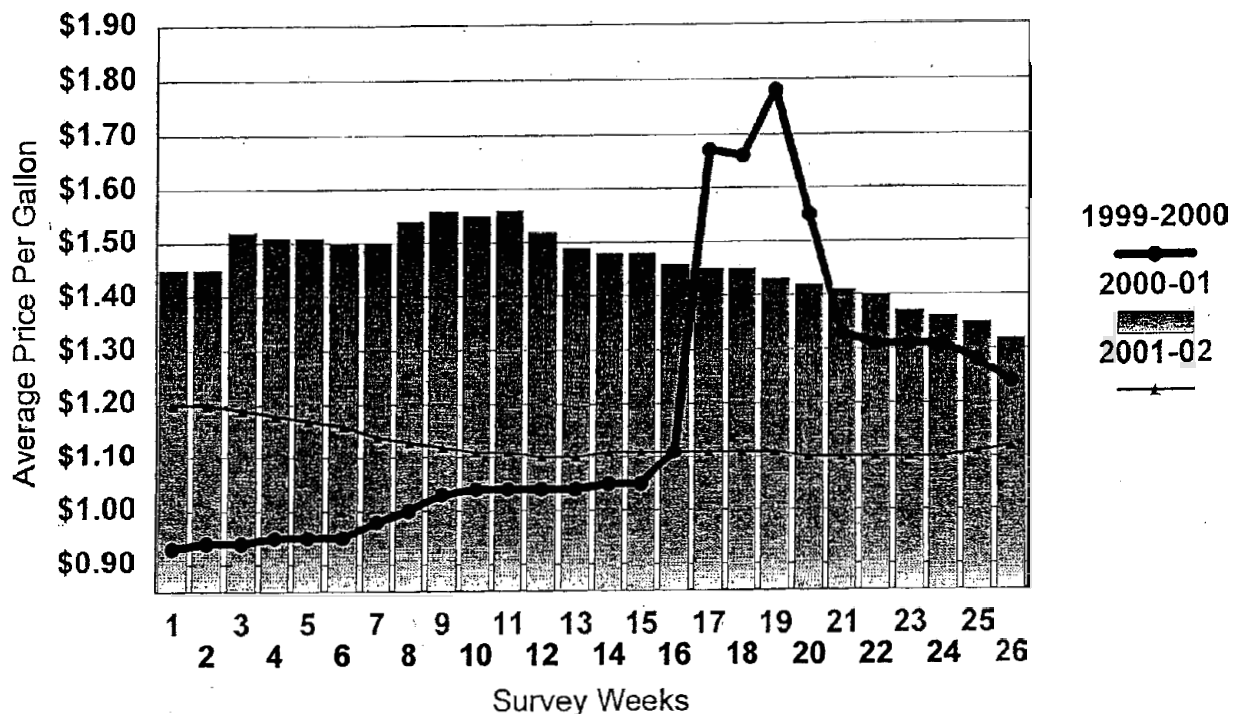
Maine Statewide Average Cash Price for No. 2 Heating Oil	1
Eight-year Comparison of Maine Statewide Average Cash Prices for No. 2	2
No.2 Heating Oil Prices- Last Eight Heating Seasons (Joyce Benson).....	2
Maine Regional Comparison - Cash Price for No. 2 Heating Oil	5
Maine Heating Oil Inventories 1999-2002	7
Kerosene Price Comparison 1999-2002	8
Maine Kerosene Inventories 1999-2002.....	9
Maine Propane Prices 2000-02	10

2001-02 Maine Price Trends for No. 2 Heating Oil

Maine price trends for No. 2 were flat and lower than last year as you can see on the graph below. Heating oil price averages stayed within a ten cent range of the starting price of \$1.20 per gallon for the whole season. The statewide average price for heating oil for the 2001-2002 heating season was \$1.13 per gallon which is roughly thirty-three cents lower than last year's annual average of \$1.46 per gallon. During most of the mid-winter prices hovered at \$1.10 or \$1.11/gallon for weeks at a time. The annual price average for 2001-2002 is much more in line with the price average of \$1.17/gallon experienced during the 1999- 2000 season.

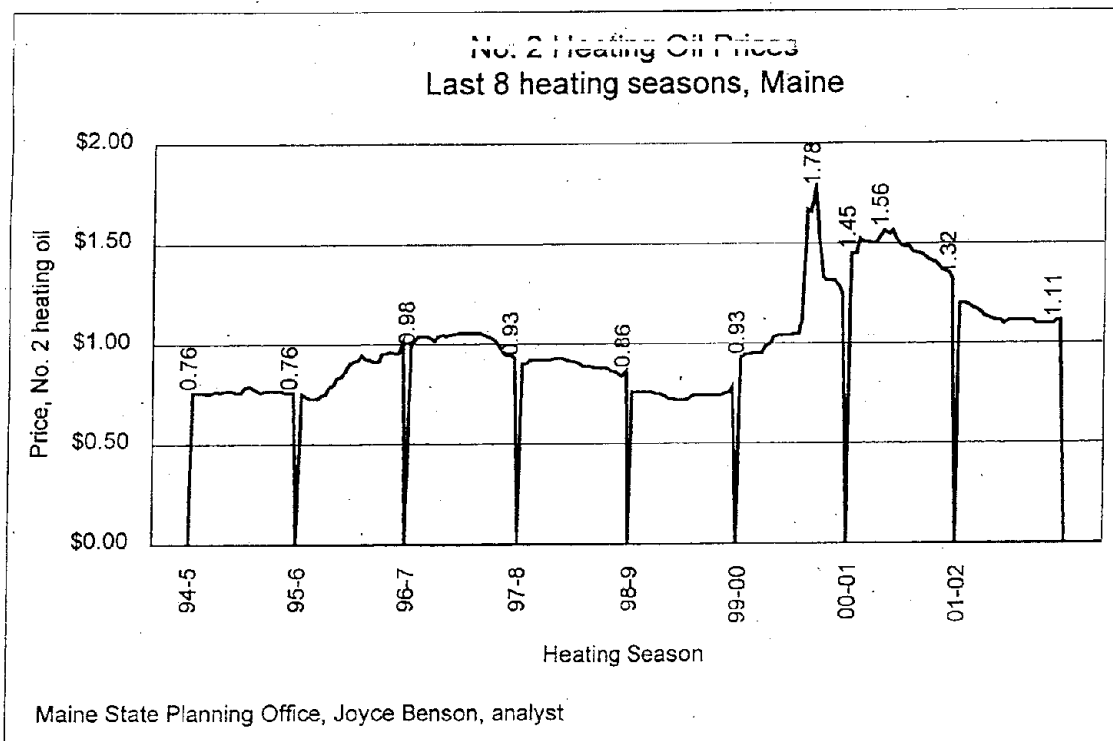
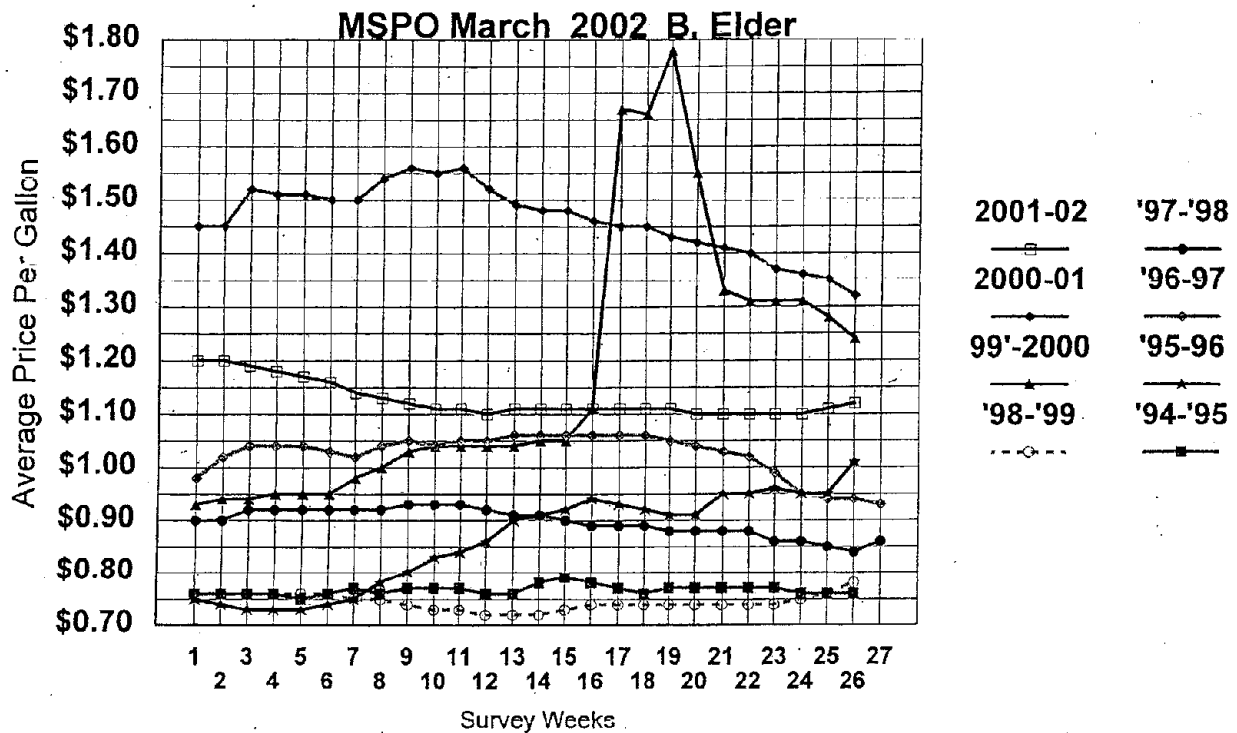
Maine Statewide Average Cash Price for No.2 Heating Oil

MSPO B. Elder March 2002



The price fluctuation for heating oil over the course of any given heating season is typically about ten cents per gallon. This year was no exception with a range from \$1.2 to 1.10. As one might note from the following graphs, compared to the past two years, the average prices were lower this year. Compared to the first five years (1994-1999) in the recent history displayed in the graph, prices were higher than previous trends.

Eight-year Comparison of Maine Statewide Average Cash Prices for No.2 Heating Oil



2001-02 Heating Oil Season Summary

Market stability characterized most this year and all of this heating season. The season's first survey of home heating oil prices on October first 2001 revealed the statewide average to be \$1.20 per gallon, down twelve cents from our last report in March and twenty-five cents lower than the previous year. After the terrorist attacks on New York and Washington D.C. on September 11th, several U.S. refineries and pipelines increased security measures but production was not affected significantly. Prior to the attacks, OPEC had stated that it was unlikely to increase oil production in the 4th quarter. Spot and futures prices were depressed as falling consumer confidence applied downward pressure on prices and fueled concerns about a global recession. Crude spot and futures prices were mixed in response to the U.S. bombing campaign in Afghanistan. Crude markets ignored bullish signals, such as OPEC's consideration of production cuts and industry data showing hefty stockdraws, in favor of bearish demand figures offered by the International Energy Agency. A strong distillate stockbuild in September grew U.S. inventories to above the normal season range by late October.

By early November, Maine's statewide average for No. 2 heating oil had declined to \$1.16 per gallon and OPEC had virtually agreed to cut production by one million barrels per day. Speculation on how much of an impact this would have was rampant as several member countries were producing over the quota. By mid-November, DOE/EIA reported that New England heating oil stocks had built to a robust 8.4 million barrels of supply compared with the previous years 3.9 MMB. After nearly two months of overall declines in U.S. crude oil and petroleum product spot and futures prices, attributed to economic weakness exacerbated by the aftermath of the 9/11 attacks, OPEC finally established a degree of credibility for proposed reductions in oil output by its members and other exporters, in order to tighten global supply balance. A decision to cut production by 1.5 million barrels per day (MMBD) on the stipulation that non-OPEC producers agree to cut their output by 0.5 MMBD contributed to this effect. Although Norway and Mexico were willing to cooperate with OPEC, Russia took its time in evaluating the extent to which it would collaborate.

Meanwhile, with the shift in month to December, Maine's statewide heating oil average continued its decline to \$1.11/gallon which was forty-four cents lower than the previous years price. Ongoing mild weather slowed heating oil demand, tightening the spread between heating oil and gasoline. Release of a government forecast predicting low U.S. petroleum growth demand continued to affect a decline in crude oil spot and futures prices. Just after Christmas, prices for crude oil recorded their largest incline of the year on the New York Mercantile Exchange as traders became convinced that oil producing nations would cut production in January. Indeed OPEC officials announced on the first of the year that they had received pledges from major non-OPEC producers, led by Russia, Mexico and Norway, to cooperate by cutting their production by another 500,000 barrels per day. The belated arrival of cold weather in January to the northeast United States and the attendant demand that accompanies winter was also a contributing factor to the price increase. East coast heating oil inventories were 15% higher than last year.

Initially the market seemed to take support from pledges to cut production. Petroleum product prices were pushed higher by this and cold weather in New England, but the statewide average in Maine stayed steady at \$1.11/gallon for six weeks through all of January and half of February. Ample and growing inventories and shrinking demand were the prevailing conditions in January. Skepticism about the effectiveness of OPEC's production cuts pervaded the marketplace stemming in part from news that Russian ports in the Baltic and Black Sea were exporting fuel oil. With weather in New England about 17% warmer than normal, soft demand continued to be the dominant market influence as we entered the month of February. Refinery production remained low as a result of lower crude throughput. Regional distillate inventories on the East Coast were 38% higher than the previous year and 19% higher than the five-year average.

By mid-February, the decline in crude oil inputs shifted reliance off of refinery production onto product inventories to supply product demand. Stock levels for both distillate and gasoline were in the normal range and New England distillate inventories were ample. Maine's statewide average for heating oil fluctuated downward a penny to \$1.10/gallon and was still thirty-two cents lower than the previous year. In late February, for the first time in twenty-three weeks, U.S. crude oil, distillate and motor gasoline inventories all fell in unison. While declines in distillate and gasoline stocks are not unusual at this time of the year, the decline in crude oil was somewhat unusual. Mild weather and subsequent low demand on the East Coast contributed to the stability in residential prices here in Maine, which stayed at \$1.10/gallon for five weeks.

With the onset of March, mild weather and subsequent low demand on the East Coast continued to contribute to the stability in residential prices here in Maine. Total U.S. commercial petroleum inventories (excluding the SPR) fell nearly 16 million barrels in three weeks. Such a steep decline in total petroleum inventories hadn't occurred since 1996, when they dropped 26.4 million barrels over three weeks. OPEC production cuts and reduced Iraqi exports had an impact on available crude supplies resulting in reduced crude exports. With less crude oil available worldwide, inputs to refineries fell putting increased reliance on product inventories to supply market demand. March 2002 came and went with very little drama or fanfare and wrapped up a heating season with one of the mildest winters on record.

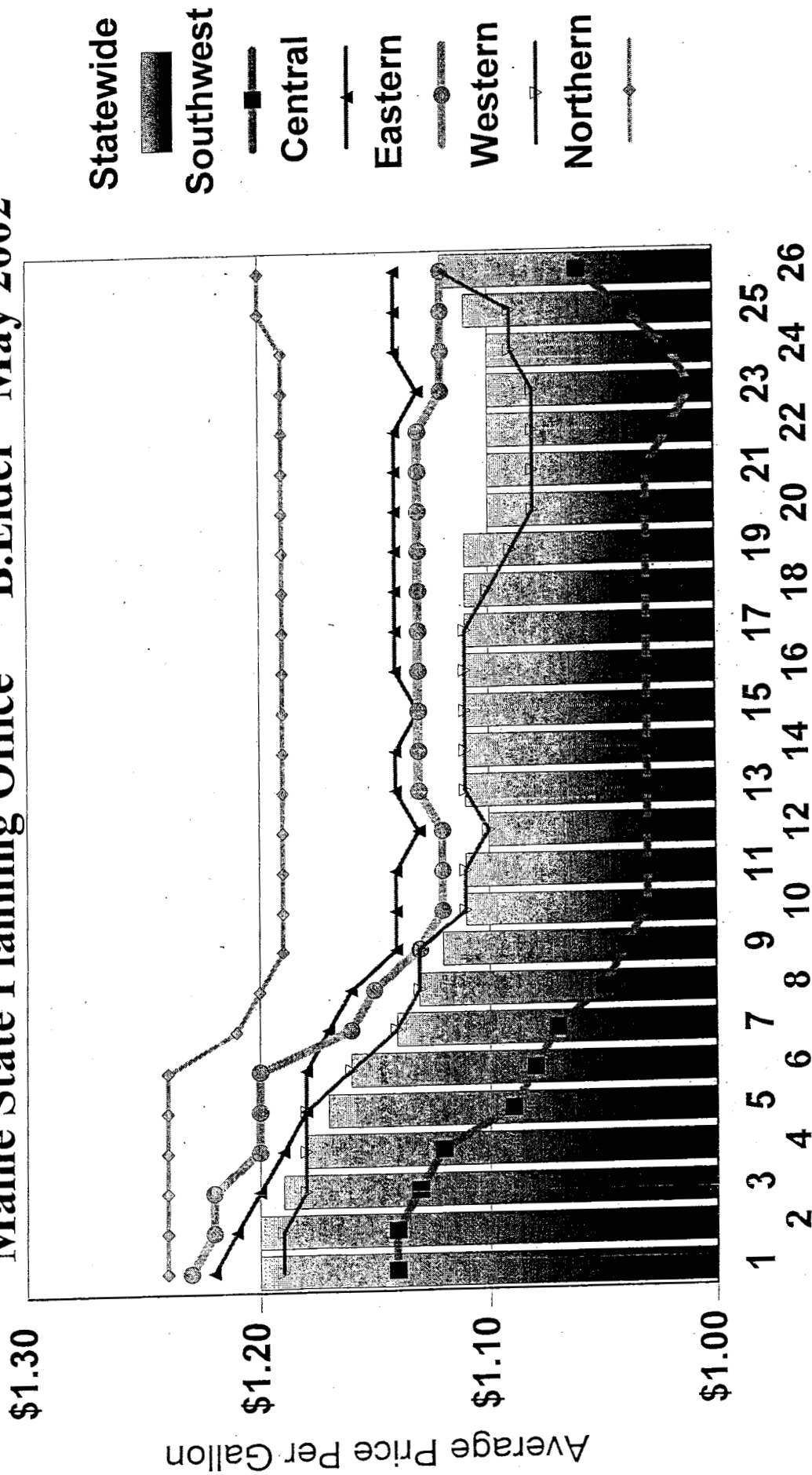
Maine No. 2 Heating Oil Regional Price Survey

In addition to the SHOPP (State Heating Oil and Propane Program) survey, which Maine SPO conducts for the DOE/EIA, SPO conducts a heating oil and kerosene regional survey simultaneously. This year the north had the highest heating oil prices which consistently exceeded the statewide average. The northern region sample includes the towns of Fort Kent, Millinocket, Houlton, Caribou and Presque Isle. The prices in the southwest region were consistently lower than other regions of the state. The lowest *actual* heating oil prices were also found in the southwest, which includes Portland, Brunswick, Gorham, Saco, South Berwick and Biddeford. The western region had prices which were most consistent with the statewide average.

Maine Regional Comparison

Cash Price for No.2 Heating Oil

Maine State Planning Office B.Elder May 2002



Survey Weeks during 2001-02 Heating Season

Maine Heating Oil Inventories 2001-02

Maine is energy dependent on oil supplies stored south of us in the rest of New England. When the flawless delivery systems are disrupted, petroleum supplies have a harder time getting to points north, including Maine. With only a five to six day storage capacity in the event of a supply disruption, does Maine ever have enough oil inventory?

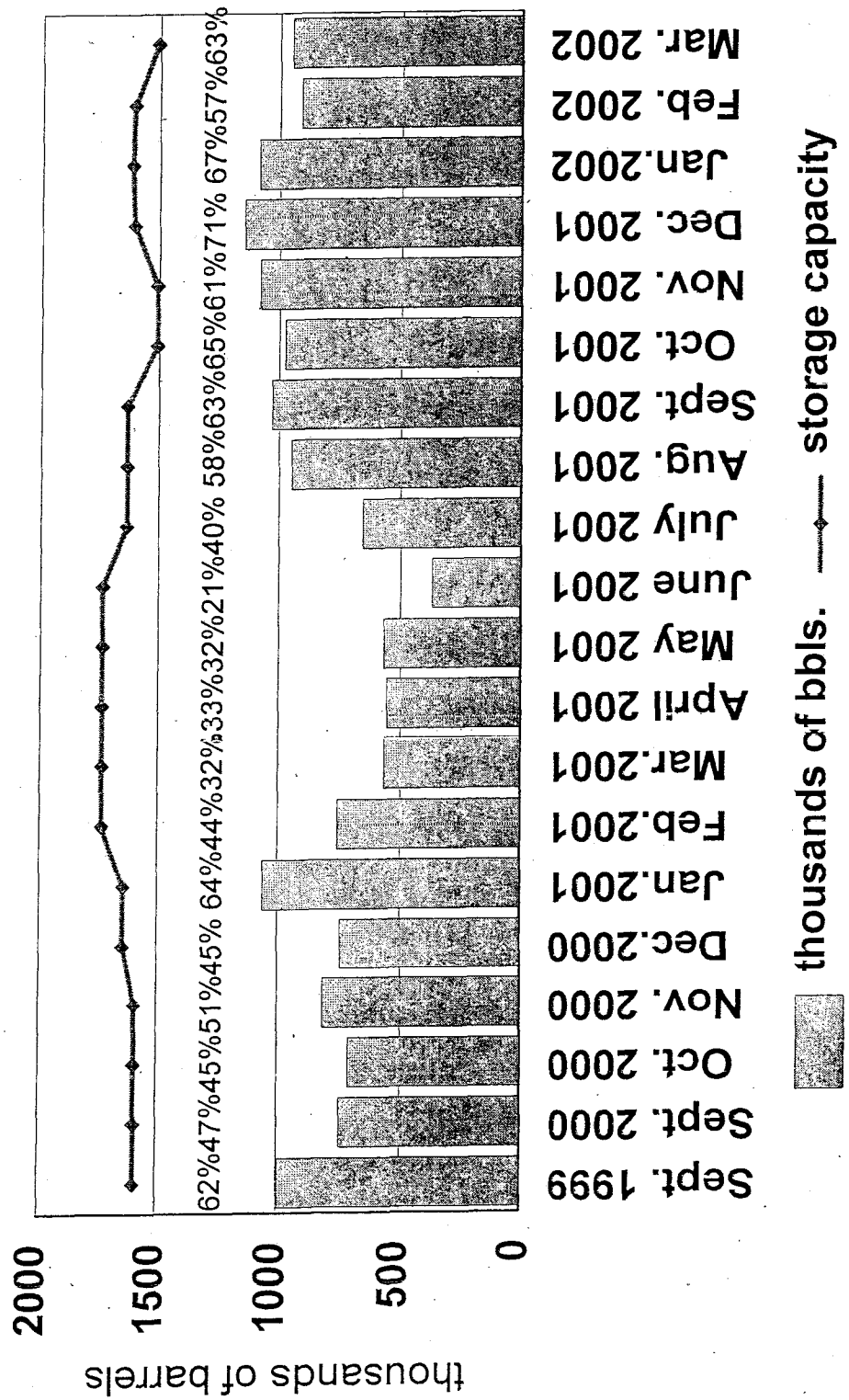
Any inventory of oil supply conducted in Maine can only give a snapshot of a very dynamic situation which can change radically overnight. The *just-in-time* inventories, which are risk averse for the industry, cause Maine consumers to absorb the brunt of price volatility in the current marketplace. Plentiful supplies in the morning can be gone by nightfall with the onset of a cold snap incentivizing consumers to fill their tanks. For these reasons, any report on current Maine heating oil inventories may be irrelevant because conditions can change rapidly which resupply or deplete regional supplies. It is these regional inventories which offer a more meaningful indicator of the health or robustness of Maine's supplies.

In its December 2001 report to the Maine legislature, entitled Maine Heating Fuels Inventory 2001, SPO stated some very basic things. Based on information received from Primary Terminal Operators, Maine inventories of heating oil were more voluminous this fall prior to the onset of the heating season. In October 2000 Maine heating oil stood at 45% of possible storage capacity. This past October 2001 we were 20% higher at 65% of storage capacity filled with 975,702bbl.. That we were in a state of readiness for winter was confirmed by the fact that in January 2001, at the height of winter demand, we filled storage to 64% of capacity which corresponds with what we had going into the heating season in October 2001. In December, national heating oil inventories were 125% higher than last year but 18% lower than the five-year average. New England heating oil inventories were also within the seasonal range in December and prices were in a downward spiral. Adequate inventories in New England bode well for Maine consumers as local prices reflect the scarcity of supply. When supplies are robust, prices are usually in decline, which is good news for 273,430 households or 57.3% of the Maine population which heats with No. 2 heating oil.

As you can see in the following graph showing Maine Heating Oil Inventories, this year Maine inventories were much higher than last year, corresponding with a similar increase in supplies in New England. One can also observe the seasonal cycle of supply build-up. Generally, heating oil supplies are at a high point in December and January and supply volumes are lowest in June.

Maine Heating Oil Inventories

Based on Bi-Weekly Reports of Primary Terminals to the MSPO
May 17, 2002 B.Elder



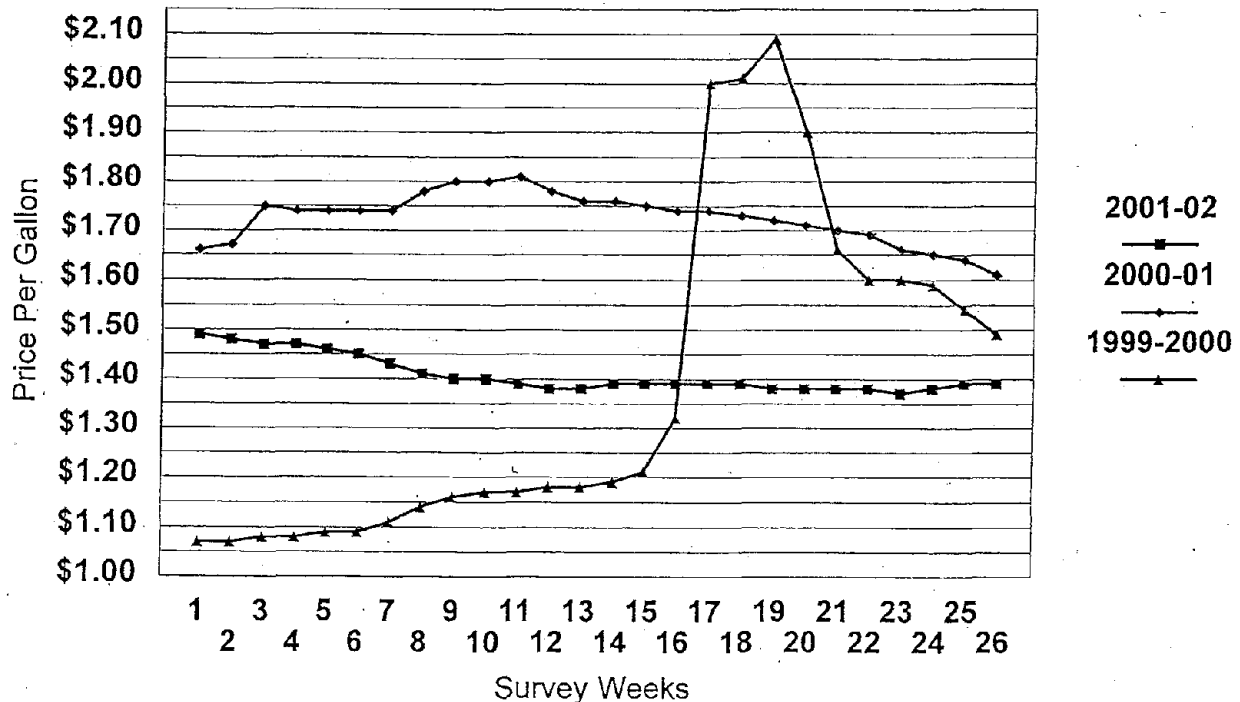
Kerosene

In Maine, kerosene, or No.1 heating oil, is popular for use in space heating applications and monitor heaters. The statewide average price for kerosene for the 2001-2002 heating season was \$1.41 per gallon which is roughly thirty-two cents lower than last year's annual average of \$1.73 per gallon. This year's average is more comparable with the 1999-2000 season average of \$1.38 per gallon. Like heating oil, kerosene prices were flatter and lower this year than last. This was good news for the roughly 39,607 households in Maine which heat primarily with kerosene. This represents 8.3% of the total population and typically this segment of the population can be characterized as low-income, elderly, rural and fiercely independent. Because the kerosene market has shrunk in Maine the sector which relies on kerosene as its primary heating fuel is the most vulnerable of any Maine heating population. Kerosene users may be well advised to have back-up systems which are not subject to kerosene re-supply disruptions. Kerosene was subject to the same market forces described in the heating oil season summary. As you can see from the graph below, all this season kerosene prices only fluctuated within a ten cent range of the October first 2001 starting price of \$1.49 per gallon.

Kerosene Price Comparison

Statewide Average Cash Prices 1999-2002

MSPO B. Elder May 2002



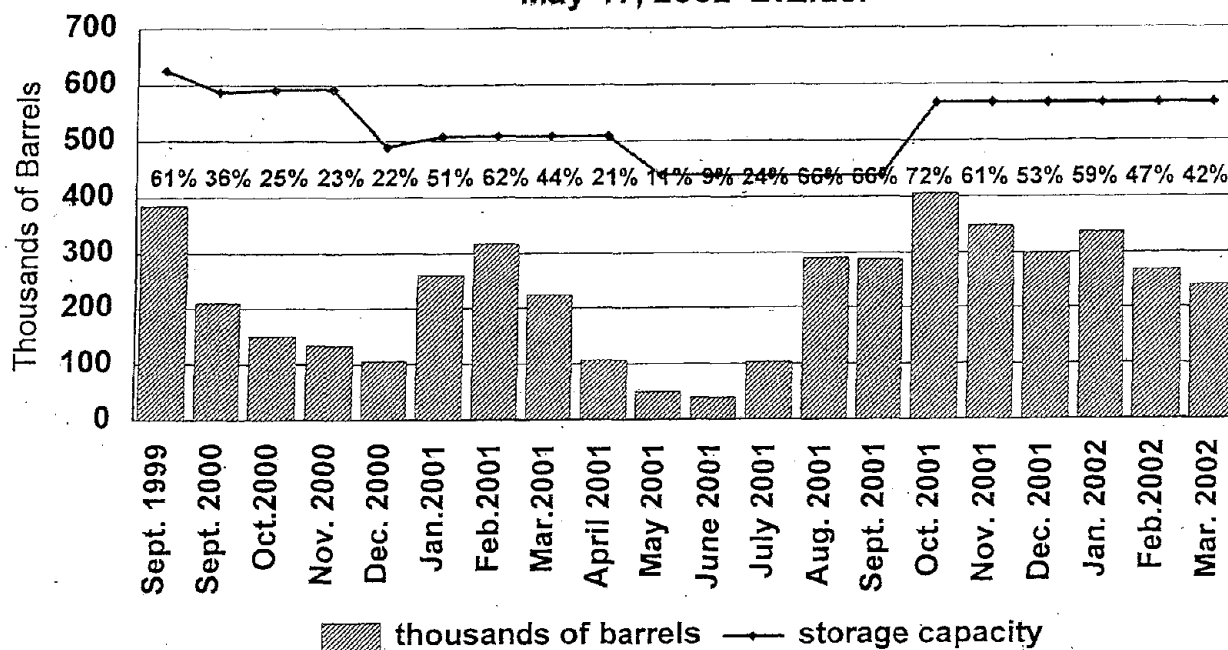
Maine Kerosene Inventories 2001-02

Based on information that SPO received from Primary Terminal Operators this year, Maine kerosene inventories also started the 2001 heating season more robust than the previous year. In its December 2001 report to the legislature entitled, Maine Heating Fuels Inventory 2001, SPO stated that kerosene supply trends are very cyclical. Stored supplies decline in summer and start to build in Maine during September and October and peak in January, February and March. In September 1999 Maine kerosene inventories filled to 61% of storage capacity with 384,223bbl.. In September 2000, Maine only filled to 36% of its kerosene storage capacity with 209,688bbl. and this year in September 2001, Maine filled to 66% of its storage capacity with 288,880bbl.. As of October 2001, kerosene inventories were filled to 72% of storage capacity, indicating a healthy if not robust supply level at the onset of the heating season.

Maine Kerosene Inventories

Based on Bi-weekly reports of Primary Terminals to the MSPO

May 17, 2002 B.Elder



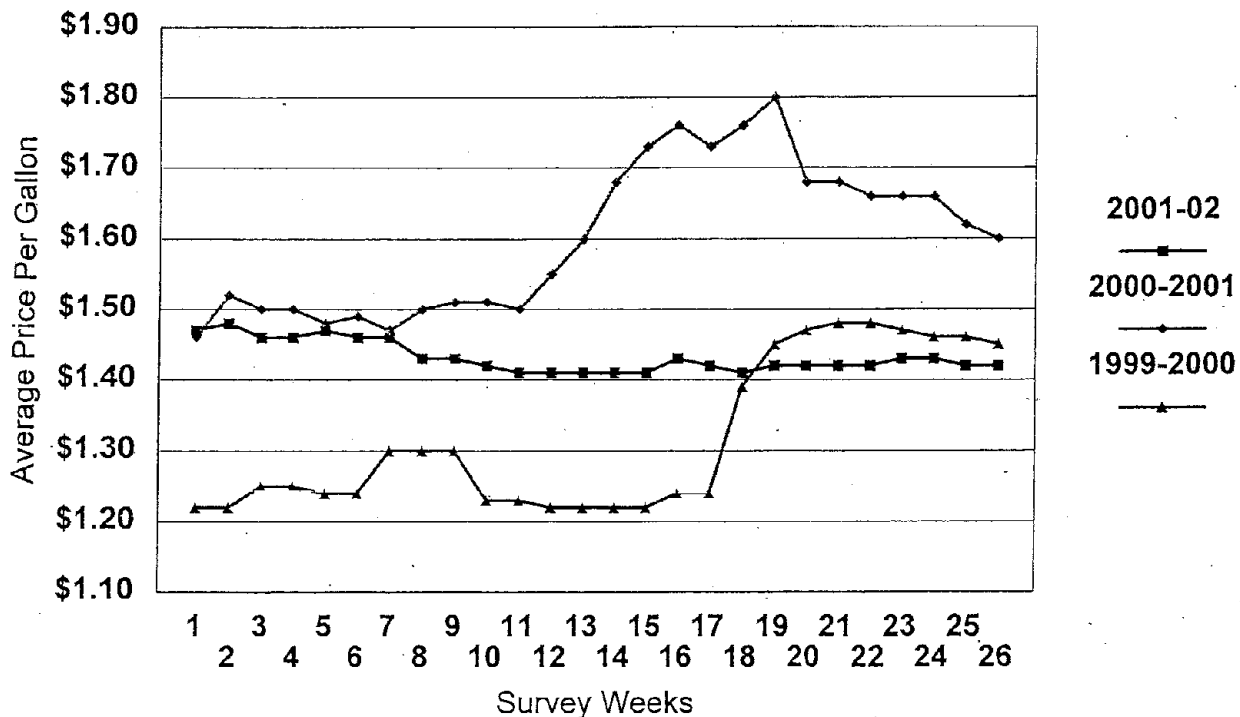
As with heating oil, kerosene supply inventories start to drop off in February and March and are lowest in the summer months.

Propane

The statewide average price for propane for the 2001-2002 heating season was \$1.43 per gallon which is roughly seventeen cents lower than last year's annual average of \$1.60 per gallon and only eight cents higher than the 1999-2000 season average of \$1.35/gallon. As you can see from the chart below, propane prices this year were low and flat compared to last year. Because propane is composed of crude oil and natural gas additives, propane prices tracked the unusually high natural gas prices experienced in December through March 2000-01. This year however, like other petroleum products already discussed, propane prices were more in line with those of the 1999-2000 season. This was good news for roughly 26,245 Maine households, or 5.5% of the population, which use propane as their primary heating fuel. Also, like other products, propane prices only fluctuated this year within a ten cent range of their October first starting price of \$1.47 per gallon. This was down thirteen cents from our last report in March 2001 and only a penny higher than the previous year.

Maine Propane Prices 2000-02

Maine State Planning Office May 2002 B. Elder



Propane demand is highly seasonal but fresh supply is not. Forty percent of the natural gas stream is propane, which is extracted during production. It is very expensive to store because it is under pressure. There are three ways that New England receives propane. Algerian and Middle Eastern propane comes via sea-going terminals in Providence, R.I. and Portsmouth, N.H.. The TEPPCO (Texas Eastern Products Pipeline Company) pipeline from Texas to Albany, N.Y. provides more supply and outsourced Canadian propane arrives in Maine via railroad. Seventy percent of Maine's propane arrives by rail to a depot in Auburn, Maine. The product comes from refineries in Canada and is provided by an affiliate of Duke Energy Field Services (DEFS). The affiliate of Duke Energy, Duke Energy NGL Services, acquired Gas Supply Resources (GSR) last May 2001 and integrated GSR's propane terminal operation into its existing import facility in Providence, R.I..

Duke Energy is the largest supplier of propane in New England. It is also a diversified multinational energy company with an integrated network of energy assets and expertise. Duke Energy manages a dynamic portfolio of natural gas and electric supply, delivery and trading businesses generating revenues of more than \$49 billion in year 2000. Duke Energy is a Fortune 100 Company. DEFS was formed by combining Duke Energy and Phillips Petroleum natural gas gathering and processing operations. It is a premier North American midstream energy company that is among the nation's leaders in gathering, processing, transporting, marketing and storing natural gas and natural gas liquids (NGLs). The Denver-based company is also a general partner of the TEPPCO pipeline. In mid-October 2001, DEFS opened its sixth New England propane terminal in Montpelier, Vermont. This additional terminal contributes to New England supply along with Duke's existing northeast network in other locations, including; Albany, N.Y., Westfield, Mass., York, P.A. and two in Maine in Auburn and Bangor. The Auburn facility has an on-site storage capacity of 120,000 gallons and Duke operates a joint venture with R.H. Foster Company in Bangor with a storage capacity of 60,000 gallons. At first blush, one might surmise that Auburn provides 2/3's and Bangor 1/3 of Maine's supply. However, due to the significant capabilities for rail delivery in Auburn, it actually is the distribution source of 75% of Maine's propane supply.

It is the Company's intention to optimize propane distribution in New England. According to Bill Waldheim, President of Duke Energy NGL Services, "Expanding our propane supply locations further enhances our position as a leading marketer of propane and paves the way for growth. This transaction will further establish (Duke Energy) as a prominent purchaser and seller of propane in the Northeast. Our ability to offer customers multiple propane supply locations should reduce transportation costs and enhance value to the customers at these facilities."(1) Duke has flexibility in how they can supply. They have a dedicated railfleet, not a paper transfer company, to bring the product to New England. They have firm, guaranteed, long-term *take or pay* contracts with major producers and because Duke is a neutral wholesaler, which distributes broadly across the market, they offer stability and reliability.

(1) press release, Duke Energy Field Services Affiliate to Acquire Propane Wholesaler in Northeast. May 1, 2001, Tom Long

State Interagency Energy Planning Team

During the crucial period of 2000-01 when oil supplies were low and prices were volatile, Maine formed a coordinated team called the State Interagency Energy Planning Team, to insure preparedness in the event of a supply crisis. This group has continued to meet this year, although not with the same level of urgency required last year. The primary focus of the group this year has been to review and comment on the, Maine Energy Emergency Plan, prepared by staff at the Maine Emergency Management Agency and the Maine SPO. The Bundle Me Up Web Site (www.bundlemeup.org) and Program was designed in 2000 to inform and educate consumers about energy options and conservation tips. The Maine State Housing Authority has maintained the site and has continued to update it this year. A toll free help line, (1-866-HEATTIP), a Maine State Housing Authority hotline housed at the Maine Department of Economic and Community Development (1-800-452-4668) and Attorney General Consumer Mediation Hotline (207-626-8849) have all been available to assist the consumer. These services were made available without expending any tax dollars.

This year Maine State Government launched it's own *in-house* Bundle Me Up campaign to raise awareness and reduce energy consumption in the workplace. An internet website at the following address, <http://inet.state.me.us/bundlemeup/> is available for State employees with energy-saving tips for the work-place including ideas for reducing gas consumption while commuting, fun facts and inter-departmental competitions. This year energy conservation projects were launched in Maine State government at the Ray and Greenlaw buildings as well as Maine Department of Transportation. The Department of Human Services is working with an engineer and applying a million dollars towards energy and electricity rehabilitation in order to accomplish increased energy savings.

SHOPP Survey Acknowledgements

This summary report is submitted by the Maine State Planning Office to fulfill the requirements of the State Heating Oil and Propane Program survey grant to the State of Maine by the Energy Information Agency of the U. S. Department of Energy. The State Planning Office is directed by Evan D. Richert, AICP. The survey is conducted within the State of Maine by the SPO Environment and Economics Division; Betsy Elder, Senior Planner. Most of the phone contacts made with the oil companies during 2001-02 were made by Donna Bradstreet of the SPO.

APPENDICES

[illegible]

-14-

MAINE State Planning Office

DOE OIL	Survey	2002	Jan. 7 2002	Jan. 14 2000	Jan. 21 2000	Jan. 28 2000	Feb. 4 2002	Feb. 11 2000	Feb. 25 2000	Mar. 4 2002	Mar. 11 2000	Mar. 18 2002
DOE Code	Dealer	Location	Heating Oil									
ME03000	Bob Cash Full	Madison	1.139	1.159	1.159	1.139	1.089	1.089	1.069	1.069	1.069	1.069
ME03001	C.N. Brown	South Paris	1.109	1.129	1.099	1.099	1.089	1.069	1.069	1.089	1.089	1.089
ME03002	Dead River	Bangor	1.159	1.159	1.159	1.159	1.159	1.159	1.159	1.159	1.159	1.159
ME03003	Down East Energy	Brunswick	1.139	1.139	1.139	1.139	1.139	1.139	1.139	1.139	1.139	1.139
ME03004	Earles Heating O	Mechanics Falls	1.029	1.049	0.999	0.999	0.989	0.989	0.989	0.989	0.989	0.989
ME03005	Fieldings Oil Co	Scarborough	0.989	0.939	0.999	0.999	0.939	0.939	0.939	0.939	0.939	0.939
ME03006	Gary's Fuel Serv	Penobscot	1.069	1.069	1.069	1.069	1.069	1.069	1.069	1.069	1.069	1.069
ME03007	H.A. Mapes Inc.	Springvale	1.039	1.039	1.049	1.049	1.049	1.049	0.999	0.999	0.999	0.999
ME03008	Irving Oil Co.	Bangor	1.158	1.158	1.51	1.51	1.147	1.147	1.147	1.147	1.145	1.145
ME03009	KingfieldCashFu	Kingfield	1.169	1.169	1.169	1.169	1.129	1.129	1.129	1.129	1.129	1.129
ME03010	Dead River	Southwest Harbor	1.069	1.089	1.079	1.079	1.079	1.079	1.079	1.079	1.079	1.079
ME03011	Monmouth Oil Co	Monmouth	1.00	1.00	1.00	1.00	1.00	1.00	1.00	1.00	1.00	1.00
ME03012	P.G. Willey & Co.	Camden	1.159	1.159	1.159	1.159	1.159	1.159	1.139	1.139	1.139	1.139
ME03013	Springbrook & Co.	Waterville	1.159	1.159	1.159	1.159	1.159	1.159	1.139	1.139	1.139	1.139
ME03014	Union Oil Co. Me.	South Portland	1.029	1.029	1.029	1.029	1.029	1.029	1.029	1.029	1.029	1.029
ME03015	Wadleighs Inc.	Hallowell	1.139	1.139	1.139	1.139	1.129	1.129	1.129	1.129	1.129	1.129
ME03016	Waldo Co. Oil Inc	Troy	1.139	1.139	1.139	1.139	1.099	1.099	1.099	1.059	1.059	1.059
ME03017	Weber Energy	Farmington	1.179	1.179	1.179	1.159	1.159	1.159	1.159	1.159	1.159	1.139
Propane												
ME00093	Colby & Gale	Damariscotta	1.4	1.52	1.52	1.52	1.52	1.52	1.52	1.52	1.52	1.52
ME00221	Northeastern Sup	Caribou	1.69	1.69	1.69	1.69	1.69	1.69	1.69	1.69	1.69	1.69
ME02075	Eastern Propane	Danvers, MA.	1.32	1.32	1.32	1.32	1.32	1.32	1.32	1.32	1.32	1.32
ME02078	Maingas	Windham	1.36	1.36	1.36	1.36	1.36	1.36	1.36	1.36	1.36	1.36
ME02081	Suburban Propa	Augusta	1.399	1.399	1.399	1.399	1.399	1.399	1.399	1.399	1.399	1.399
ME05001	Dead River Co.	Boothbay	1.35	1.35	1.359	1.359	1.35	1.35	1.35	1.35	1.35	1.35
ME05002	Dead River	Houlton	1.29	1.29	1.299	1.299	1.29	1.299	1.299	1.299	1.299	1.299
ME05003	Irving Oil/Mainwa	Bangor	1.353	1.353	1.407	1.357	1.376	1.386	1.452	1.391	1.422	1.422
ME05004	Suburban Propa	Heron Center	1.549	1.569	1.569	1.569	1.569	1.569	1.569	1.569	1.569	1.569
ME05005	WebberOilDBAK	Rockland	1.399	1.399	1.399	1.399	1.399	1.399	1.399	1.399	1.399	1.399
ME05006	Carver Oil	Jonesport	NA	NA	NA	NA	NA	NA	NA	NA	NA	NA
ME05007	Community Ener	Rumford	1.24	1.24	1.24	1.24	1.24	1.24	1.24	1.24	1.24	1.24
ME05008	Community Fuel	Belfast	1.45	1.45	1.45	1.45	1.45	1.45	1.45	1.45	1.45	1.45
ME05010	Country Gas Inc.	Denmark	1.3	1.3	1.3	1.3	1.3	1.3	1.3	1.3	1.3	1.3
ME05011	Emery Mills Oil C	Acton	1.4	1.4	1.4	1.4	1.38	1.38	1.38	1.38	1.38	1.38
ME05014	Gould & Son Inc.	Searsport	1.8	1.8	1.8	1.8	1.8	1.8	1.8	1.8	1.8	1.8
ME05015	Graves Serv Stal	Brownville, N.J.	1.32	1.35	1.34	1.34	1.34	1.34	1.34	1.34	1.34	1.34
ME05016	Guyettes LPG G	Sorrento	1.33	1.33	1.33	1.33	1.33	1.33	1.33	1.33	1.33	1.33
ME05018	Main Street Fuel	Richmond	1.06	1.06	1.06	1.06	1.06	1.06	1.089	1.089	1.129	1.129
ME05020	Norton Hardware	Kezar Falls	1.619	1.619	1.509	1.619	1.509	1.619	1.619	1.509	1.509	1.509
ME05021	Pearson Oil	Bangor	1.299	1.299	1.299	1.299	1.299	1.299	1.299	1.299	1.299	1.299
ME05022	Penobscot Bayic	Rockport	1.45	1.45	1.4	1.4	1.45	1.45	1.45	1.45	1.45	1.45
ME05023	RW Matthews & S	Cherryfield	1.46	1.51	1.46	1.46	1.51	1.46	1.46	1.51	1.46	1.46
ME05024	Thompsons Oil C	Belfast	1.3	1.3	1.3	1.3	1.3	1.3	1.3	1.3	1.3	1.3
ME05025	Valley Gas Co.	Kingfield	1.34	1.34	1.34	1.34	1.34	1.34	1.34	1.34	1.34	1.34
ME05026	Whittemt Oil Co. In	North Conway, NH	1.429	1.369	1.369	1.369	1.369	1.369	1.369	1.369	1.369	1.369
ME05028	WebberOilDBAK	Hollis	1.509	1.509	1.509	1.509	1.509	1.509	1.509	1.509	1.509	1.509
ME05030	WebberOilDBAH	Elsworth	1.509	1.509	1.509	1.509	1.509	1.509	1.509	1.509	1.509	1.509
ME05031	WebberOilDBAD	Gorham	1.509	1.509	1.509	1.509	1.509	1.509	1.509	1.509	1.509	1.509
ME05032	WebberOilDBAC	Dover-Foxcroft	1.569	1.669	1.669	1.669	1.669	1.669	1.669	1.669	1.669	1.669

2001-02 Residential Heating Oil/Kerosene Price Survey Spreadsheet

Maine State Planning Office

October 1, 2001

October 8, 2001

Averages	No #2		K - 1/Kerosene		No #2		K - 1/Kerosene	
	Retail	Cash	Retail	Cash	Retail	Cash	Retail	Cash
Southwestern	1.232	1.141	1.542	1.450	1.232	1.141	1.564	1.464
change since last week					0.000	0.000	0.022	0.014
Central	1.308	1.219	1.600	1.511	1.299	1.211	1.592	1.503
change since last week					(0.009)	(0.008)	(0.008)	(0.008)
Eastern	1.317	1.233	1.574	1.500	1.310	1.216	1.568	1.484
change since last week					(0.007)	(0.017)	(0.006)	(0.016)
Western	1.293	1.192	1.600	1.499	1.293	1.192	1.600	1.499
change since last week					0.000	0.000	0.000	0.000
Northern	1.259	1.245	1.493	1.479	1.259	1.245	1.493	1.479
changesince last week								
Statewide	1.280	1.201	1.563	1.486	1.277	1.196	1.566	1.484

October 15, 2001

October 22, 2001

Averages	No #2		K - 1/Kerosene		No #2		K - 1/Kerosene	
	Retail	Cash	Retail	Cash	Retail	Cash	Retail	Cash
Southwestern	1.222	1.132	1.526	1.439	1.212	1.121	1.519	1.428
change since last	(0.010)	(0.009)	(0.038)	(0.025)	(0.011)	(0.011)	(0.007)	(0.011)
Central	1.261	1.197	1.557	1.492	1.240	1.192	1.535	1.487
change since last	(0.038)	(0.014)	(0.036)	(0.011)	(0.021)	(0.004)	(0.022)	(0.006)
Eastern	1.280	1.216	1.537	1.483	1.267	1.203	1.539	1.475
change since last	(0.030)	0.000	(0.031)	(0.001)	(0.013)	(0.013)	0.002	(0.008)
Western	1.268	1.179	1.588	1.487	1.279	1.178	1.587	1.485
change since last	(0.025)	(0.012)	(0.012)	(0.013)	0.011	(0.001)	(0.001)	(0.001)
Northern	1.259	1.245	1.493	1.479	1.259	1.245	1.508	1.479
changesince last week								
Statewide	1.256	1.188	1.540	1.473	1.248	1.181	1.536	1.467

October 29, 2001

November 5, 2001

Averages	No #2		K - 1/Kerosene		No #2		K - 1/Kerosene	
	Retail	Cash	Retail	Cash	Retail	Cash	Retail	Cash
Southwestern	1.177	1.091	1.484	1.397	1.168	1.082	1.471	1.384
change since last	(0.034)	(0.030)	(0.035)	(0.032)	(0.009)	(0.009)	(0.013)	(0.012)
Central	1.232	1.183	1.535	1.476	1.222	1.180	1.526	1.472
change since last	(0.008)	(0.009)	0.000	(0.011)	(0.010)	(0.003)	(0.009)	(0.003)
Eastern	1.274	1.200	1.528	1.464	1.272	1.198	1.534	1.470
change since last	0.007	(0.003)	(0.011)	(0.011)	(0.002)	(0.002)	0.006	0.006
Western	1.285	1.184	1.593	1.492	1.263	1.163	1.560	1.460
change since last	0.006	0.006	0.006	0.006	(0.022)	(0.021)	(0.033)	(0.031)
Northern	1.273	1.245	1.508	1.479	1.273	1.245	1.508	1.479
changesince last week								
Statewide	1.242	1.172	1.526	1.456	1.234	1.165	1.516	1.448

2001-02 Residential Heating Oil/Kerosene Price Survey Spreadsheet
Maine State Planning Office

Nov. 12, 2001					Nov. 19, 2001			
Averages	No #2		K - 1/Kerosene		No #2		K - 1/Kerosene	
	Retail	Cash	Retail	Cash	Retail	Cash	Retail	Cash
Southwestern	1.156	1.069	1.467	1.378	1.137	1.047	1.451	1.362
change since last	(0.013)	(0.012)	(0.003)	(0.006)	(0.019)	(0.022)	(0.017)	(0.017)
Central	1.209	1.167	1.455	1.459	1.206	1.162	1.498	1.456
change since last	(0.013)	(0.013)	(0.071)	(0.013)	(0.003)	(0.004)	0.043	(0.003)
Eastern	1.235	1.165	1.497	1.437	1.222	1.152	1.489	1.419
change since last	(0.037)	(0.033)	(0.037)	(0.033)	(0.013)	(0.013)	(0.008)	(0.018)
Western	1.245	1.145	1.543	1.443	1.253	1.132	1.520	1.428
change since last	(0.018)	(0.017)	(0.017)	(0.018)	0.008	(0.014)	(0.022)	(0.015)
Northern	1.252	1.209	1.473	1.445	1.229	1.200	1.465	1.436
changesince lastweek								
Statewide	1.214	1.144	1.485	1.428	1.203	1.131	1.482	1.415

Nov. 26, 2001					December 3, 2001			
Averages	No #2		K - 1/Kerosene		No #2		K - 1/Kerosene	
	Retail	Cash	Retail	Cash	Retail	Cash	Retail	Cash
Southwestern	1.130	1.041	1.440	1.351	1.120	1.033	1.432	1.346
change since last	(0.007)	(0.007)	(0.011)	(0.011)	(0.010)	(0.008)	(0.008)	(0.005)
Central	1.187	1.145	1.483	1.441	1.183	1.141	1.476	1.433
change since last	(0.019)	(0.018)	(0.014)	(0.014)	(0.003)	(0.003)	(0.008)	(0.008)
Eastern	1.196	1.126	1.462	1.392	1.184	1.124	1.452	1.392
change since last	(0.026)	(0.026)	(0.027)	(0.027)	(0.012)	(0.002)	(0.010)	0.000
Western	1.228	1.128	1.517	1.417	1.212	1.112	1.508	1.408
change since last	(0.025)	(0.004)	(0.004)	(0.011)	(0.016)	(0.016)	(0.009)	(0.009)
Northern	1.218	1.189	1.453	1.425	1.218	1.189	1.439	1.425
changesince lastweek								
Statewide	1.186	1.117	1.469	1.400	1.177	1.111	1.459	1.396

Dec. 10, 2001					Dec. 17, 2001			
Averages	No #2		K - 1/Kerosene		No #2		K - 1/Kerosene	
	Retail	Cash	Retail	Cash	Retail	Cash	Retail	Cash
Southwestern	1.116	1.029	1.419	1.332	1.100	1.013	1.389	1.302
change since last	(0.004)	(0.004)	(0.013)	(0.013)	(0.016)	(0.016)	(0.030)	(0.030)
Central	1.168	1.137	1.457	1.429	1.165	1.131	1.455	1.421
change since last	(0.016)	(0.004)	(0.019)	(0.004)	(0.003)	(0.006)	(0.002)	(0.008)
Eastern	1.178	1.118	1.427	1.377	1.192	1.122	1.454	1.384
change since last	(0.006)	(0.006)	(0.025)	(0.015)	0.014	0.004	0.027	0.007
Western	1.209	1.109	1.510	1.410	1.204	1.104	1.504	1.402
change since last	(0.002)	(0.002)	0.002	0.002	(0.005)	(0.005)	(0.006)	(0.009)
Northern	1.218	1.189	1.453	1.425	1.218	1.189	1.453	1.425
changesince lastweek								
Statewide	1.171	1.108	1.449	1.389	1.169	1.102	1.446	1.379

2001-02 Residential Heating Oil/Kerosene Price Survey Spreadsheet Maine State Planning Office

Dec. 24, 2001

Dec. 31, 2001

Averages	No #2		K - 1/Kerosene		Averages	No #2		K - 1/Kerosene	
	Retail	Cash	Retail	Cash		Retail	Cash	Retail	Cash
Southwestern	1.200	1.013	1.515	1.302	1.115	1.027	1.409	1.326	
change since last	0.100	0.000	0.126	0.000	(0.085)	0.014	(0.106)	0.023	
Central	1.310	1.131	1.636	1.421	1.172	1.139	1.455	1.421	
change since last	0.146	0.000	0.182	0.000	(0.138)	0.008	(0.182)	0.000	
Eastern	1.703	1.122	2.077	1.384	1.197	1.127	1.465	1.395	
change since last	0.511	0.000	0.623	0.000	(0.506)	0.005	(0.612)	0.011	
Western	1.204	1.104	1.504	1.402	1.207	1.107	1.504	1.404	
change since last	0.000	0.000	0.000	0.000	0.003	0.002	0.000	0.002	
Northern	1.262	1.189	1.587	1.425	1.230	1.188	1.453	1.425	
changesince last week									
Statewide	1.493	1.102	1.847	1.379	1.177	1.109	1.453	1.388	

Jan. 7, 2002

Jan. 14, 2002

Averages	No #2		K - 1/Kerosene		Averages	No #2		K - 1/Kerosene	
	Retail	Cash	Retail	Cash		Retail	Cash	Retail	Cash
Southwestern	1.115	1.032	1.411	1.327	1.117	1.034	1.415	1.332	
change since last	0.000	0.004	0.002	0.002	0.002	0.002	0.004	0.005	
Central	1.168	1.135	1.455	1.421	1.182	1.140	1.459	1.426	
change since last	(0.004)	(0.004)	0.000	0.000	0.014	0.006	0.004	0.004	
Eastern	1.200	1.130	1.462	1.392	1.203	1.133	1.466	1.396	
change since last	0.003	0.003	(0.003)	(0.003)	0.003	0.003	0.004	0.004	
Western	1.207	1.107	1.504	1.404	1.208	1.114	1.512	1.412	
change since last	0.000	0.000	0.000	0.000	0.001	0.007	0.008	0.008	
Northern	1.230	1.188	1.453	1.425	1.230	1.188	1.453	1.425	
changesince last week									
Statewide	1.177	1.110	1.453	1.388	1.182	1.114	1.457	1.392	

Jan 22, 2002

Jan. 28, 2002

Averages	No #2		K - 1/Kerosene		Averages	No #2		K - 1/Kerosene	
	Retail	Cash	Retail	Cash		Retail	Cash	Retail	Cash
Southwestern	1.118	1.035	1.417	1.335	1.118	1.035	1.417	1.335	
change since last	0.001	0.001	0.003	0.002	0.000	0.000	0.000	0.000	
Central	1.182	1.138	1.459	1.426	1.181	1.137	1.460	1.416	
change since last	0.000	(0.002)	0.000	0.000	(0.001)	(0.001)	0.001	(0.010)	
Eastern	1.200	1.130	1.463	1.393	1.190	1.130	1.453	1.393	
change since last	(0.003)	(0.003)	(0.003)	(0.003)	(0.010)	0.000	(0.010)	0.000	
Western	1.200	1.107	1.508	1.404	1.209	1.104	1.508	1.404	
change since last	(0.008)	(0.007)	(0.004)	(0.008)	0.009	(0.002)	0.000	0.000	
Northern	1.216	1.188	1.453	1.425	1.216	1.188	1.453	1.425	
changesince last week									
Statewide	1.178	1.111	1.457	1.391	1.177	1.111	1.455	1.389	

2001-02 Residential Heating Oil/Kerosene Price Survey Spreadsheet Maine State Planning Office

Feb. 4, 2002					Feb. 11, 2002				
	No #2		K - 1/Kerosene			No #2		K - 1/Kerosene	
Averages	Retail	Cash	Retail	Cash	Retail	Cash	Retail	Cash	
Southwestern	1.115	1.032	1.410	1.327	1.123	1.032	1.406	1.322	
change since last	(0.003)	(0.003)	(0.008)	(0.008)	0.008	0.000	(0.004)	(0.004)	
Central	1.181	1.137	1.451	1.407	1.181	1.137	1.449	1.405	
change since last	0.000	0.000	(0.009)	(0.009)	0.000	0.000	(0.002)	(0.002)	
Eastern	1.180	1.130	1.443	1.393	1.177	1.127	1.432	1.382	
change since last	(0.010)	0.000	(0.010)	0.000	(0.003)	(0.003)	(0.011)	(0.011)	
Western	1.193	1.088	1.497	1.393	1.187	1.082	1.492	1.387	
change since last	(0.016)	(0.016)	(0.011)	(0.011)	(0.006)	(0.006)	(0.005)	(0.006)	
Northern	1.216	1.188	1.453	1.425	1.216	1.188	1.453	1.425	
changesince last	0.000	0.000	0.000	0.000	0.000	0.000	0.000	0.000	
Statewide	1.171	1.107	1.447	1.383	1.171	1.105	1.442	1.378	

Feb. 18, 2002					Feb. 25, 2002				
	No #2		K - 1/Kerosene			No #2		K - 1/Kerosene	
Averages	Retail	Cash	Retail	Cash	Retail	Cash	Retail	Cash	
Southwestern	1.122	1.030	1.399	1.316	1.125	1.025	1.412	1.312	
change since last	(0.002)	(0.002)	(0.007)	(0.007)	0.003	(0.005)	0.013	(0.003)	
Central	1.180	1.136	1.447	1.402	1.180	1.136	1.436	1.402	
change since last	(0.001)	(0.001)	(0.002)	(0.002)	0.000	0.000	(0.011)	0.000	
Eastern	1.187	1.127	1.450	1.390	1.187	1.127	1.450	1.390	
change since last	0.010	0.000	0.018	0.008	0.000	0.000	0.000	0.000	
Western	1.189	1.084	1.494	1.389	1.187	1.082	1.492	1.387	
change since last	0.002	0.003	0.002	0.002	(0.002)	(0.003)	(0.002)	(0.002)	
Northern	1.216	1.188	1.453	1.425	1.216	1.188	1.453	1.425	
changesince last	0.000	0.000	0.000	0.000	0.000	0.000	0.000	0.000	
Statewide	1.173	1.105	1.444	1.378	1.174	1.103	1.445	1.377	

March 4, 2002					March 11, 2002			
	No #2		K - 1/Kerosene		No #2		K - 1/Kerosene	
Averages	Retail	Cash	Retail	Cash	Retail	Cash	Retail	Cash
Southwestern	1.114	1.014	1.405	1.305	1.122	1.022	1.413	1.313
change since last	(0.011)	(0.011)	(0.008)	(0.008)	0.008	0.008	0.008	0.008
Central	1.167	1.133	1.432	1.400	1.170	1.137	1.442	1.409
change since last	(0.013)	(0.002)	(0.003)	(0.002)	0.003	0.003	0.010	0.009
Eastern	1.170	1.120	1.438	1.378	1.170	1.122	1.433	1.383
change since last	(0.017)	(0.007)	(0.012)	(0.012)	0.000	0.002	(0.005)	0.005
Western	1.189	1.084	1.494	1.389	1.192	1.087	1.497	1.392
change since last	0.002	0.003	0.002	0.002	0.002	0.002	0.003	0.002
Northern	1.216	1.188	1.453	1.425	1.216	1.188	1.453	1.425
changesince last	0.000	0.000	0.000	0.000	0.000	0.000	0.000	0.000
Statewide	1.165	1.099	1.440	1.372	1.168	1.103	1.444	1.378

**2001-02 Residential Heating Oil/Kerosene Price Survey Spreadsheet
Maine State Planning Office**

March 18, 2002					March 25, 2002			
Averages	No #2		K - 1/Kerosene		No #2		K - 1/Kerosene	
	Retail	Cash	Retail	Cash	Retail	Cash	Retail	Cash
Southwestern	1.139	1.039	1.432	1.332	1.156	1.056	1.446	1.346
change since last	0.017	0.017	0.018	0.018	0.017	0.017	0.014	0.014
Central	1.173	1.140	1.456	1.422	1.175	1.141	1.449	1.416
change since last	0.003	0.003	0.013	0.013	0.001	0.001	(0.007)	(0.007)
Eastern	1.174	1.124	1.433	1.383	1.174	1.124	1.430	1.380
change since last	0.004	0.002	0.000	0.000	0.000	0.000	(0.003)	(0.003)
Western	1.200	1.095	1.504	1.399	1.210	1.118	1.505	1.413
change since last	0.009	0.009	0.007	0.008	0.010	0.022	0.001	0.014
Northern	1.228	1.199	1.465	1.436	1.236	1.205	1.470	1.442
changesince last	0.011	0.011	0.011	0.011	0.009	0.006	0.006	0.006
Statewide	1.177	1.111	1.454	1.388	1.185	1.121	1.457	1.393