

Brookhaven National Laboratory (BNL)
Proton Beam Characteristics and Dynamics:
A First Look

Los Alamos
NATIONAL LABORATORY

*Los Alamos National Laboratory is operated by the University of California
for the United States Department of Energy under contract W-7405-ENG-36.*

Edited by Patricia W. Mendijs, Group CIC-1

An Affirmative Action/Equal Opportunity Employer

This report was prepared as an account of work sponsored by an agency of the United States Government. Neither The Regents of the University of California, the United States Government nor any agency thereof, nor any of their employees, makes any warranty, express or implied, or assumes any legal liability or responsibility for the accuracy, completeness, or usefulness of any information, apparatus, product, or process disclosed, or represents that its use would not infringe privately owned rights. Reference herein to any specific commercial product, process, or service by trade name, trademark, manufacturer, or otherwise, does not necessarily constitute or imply its endorsement, recommendation, or favoring by The Regents of the University of California, the United States Government, or any agency thereof. The views and opinions of authors expressed herein do not necessarily state or reflect those of The Regents of the University of California, the United States Government, or any agency thereof. Los Alamos National Laboratory strongly supports academic freedom and a researcher's right to publish; as an institution, however, the Laboratory does not endorse the viewpoint of a publication or guarantee its technical correctness.

Brookhaven National Laboratory (BNL)
Proton Beam Characteristics and Dynamics:
A First Look

Kevin R. Vixie
Gary L. Sandine

Brookhaven National Laboratory (BNL) Proton Beam Characteristics and Dynamics: A First Look

by
Kevin R. Vixie and Gary Sandine
Los Alamos National Laboratory

Abstract

This report is the first in a series addressing issues that affect the quantitative conclusions of proton radiographic analysis. In this paper we begin studying the dynamics and measurement of the proton beam profile. We conclude with a plan for further study.

1 Introduction

This report is the first in a series addressing issues that arise in the analysis of data collected in the proton radiography experiments. The ultimate goal of these experiments is to determine object density and material identification (ID) as a function of location. Part of this goal, necessary for the analysis to be useful, is the determination of error bars for the reconstructed densities. Integral to this is a sensitivity analysis of the whole experiment and analysis method that will rigorously tell us where improvements need to be made and what practical limits there are to the usefulness of the data.

Remark on terminology: Throughout this report, we will refer to the output of the reconstruction analysis and algorithms as “final numbers” and the error bounds as “error bars”. By error bound I mean an upper bound on the maximum difference between the true quantity and the predicted quantity using some specified norm. BNL is Brookhaven National Laboratory.

In this report we address the issue of beam variability and measurement uncertainties. More specifically, we take a preliminary look at the variation of the impinging proton beam and the size of the measurement errors. The beam is recorded at several locations. (See Fig. 1 below.) The first such record is

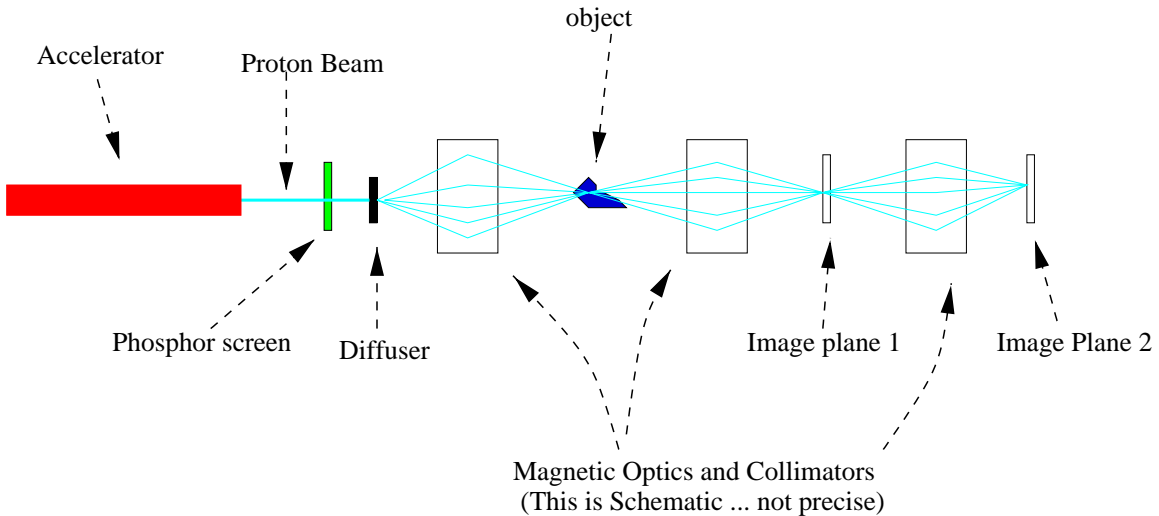


Fig. 1: Schematic of the beam, object, and image planes

obtained as the beam passes through a phosphor screen in front of the diffuser plate. A later report will address this beam profile and its relation to the beam profile that hits the experimental object. Next the beam hits the diffuser and spreads to an approximately Gaussian profile before heading into the magnetic lenses which eventually deliver it to the object plane. After being attenuated by the object, further lenses deliver the image to an image plane in which 4 plates are located. These 4 plates record the same image (modulo variations in plate sensitivities). The beam then is delivered by magnetic lenses to another image plane where 4 additional plates again record the attenuated beam. There are also collimators along the way that permit material ID to be done with the images from image planes 1 and 2.

To obtain beam profiles which are subsequently used in the radiographic reconstruction process, radiographs are made with no object in the object plane. The resulting radiograph of the post-diffuser beam profile is used to adjust for the nonuniformity of the beam profile in radiographs where objects are in place. If the beam profile is not a function of time and there are no measurement errors, this adjustment works perfectly. In reality, neither of these conditions are met.

The phosphor recording plates are made by Fuji for medical radiography. The phosphor in the plate is moved to an excited state by ionizing radiation. Exposure to light prompts the decay through the release of red light to the non-excited state. In this way, excitation can be measured by collecting the red light that is stimulated by a laser beam scanned across the plate. Exposure to bright light for a few minutes completely “erases” the excitation, whereupon the plate can be used again.

The plates themselves appear to be an important source of variability. In fact, previous studies [1] seem to indicate that the plates vary in sensitivity across their extent by as much as 10%. There is also a mysterious variation in plate response from experiment to experiment that has been identified but not explained (to date). The plates have a slow and fast time governing the decay of excitation. Some of these issues have already been studied by Alexander Saunders [1]. All these issues will be examined more closely in coming reports. What can be stated unequivocally though is that the final word on beam variability can only be achieved when the plates are completely characterized. In

2 DESCRIPTION OF DATA

this report we examine what can be understood of the beam variability without first settling these plate issues.

2 Description of data

The Brookhaven experiments included eleven beam shots. Of these, nine were good, meaning that some of the plates recorded the event. There was one record of the beam without the diffuser in place. Of the remaining eight shots with the diffuser in place, five had less than the full number of eight plates recording the event. The good data were composed of forty plates, representing the eight beam shots over a span of five days; we give the dates and times of the shots in Table 1 (or as a graph for visually oriented readers in Fig. 2). The diffuser for all these experiments was a half-inch thick sheet of Tantalum.

run	when
6986	8/19 10:51 hrs
7000	8/20 00:10 hrs
7050	8/20 20:45 hrs
7061	8/20 23:00 hrs
7066	8/21 02:50 hrs
7072	8/21 06:00 hrs
7130	8/22 05:50 hrs
7209	8/23 05:00 hrs

Table 1: Time information

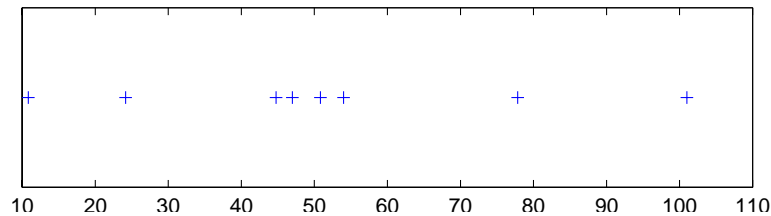


Fig. 2: Time line showing times of beam shots in hours from 00:00 of 8/19/1999

3 ANALYSIS AND RESULTS

After exposure to the beam, the plates were removed from the image planes and placed two at a time on a drum scanner. The plates were then scanned, generating several TIFF files, each looking like the image (minus the black squares) in Fig. 3 below. From each raw data file, we extracted the left and

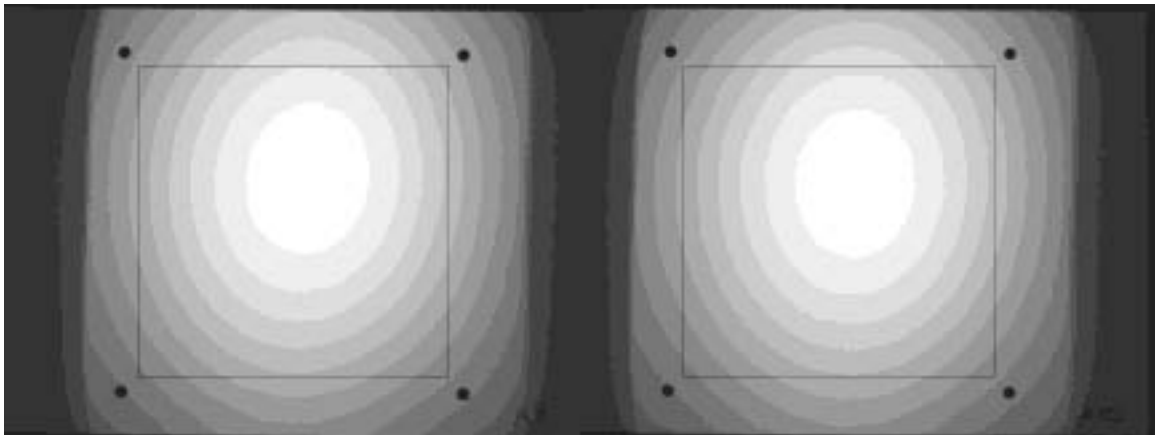


Fig. 3: (Run 6986) Portion of data used for fit

right images, and from those we extracted square sections represented by the black squares in Fig. 3. The resulting chunks of raw data were 540×540 pixels. The size and location of those chunks were chosen so as to exclude the dark registration circles, to include the centers of the beam profiles, and to do so without change from TIFF file to TIFF file (i.e. without changing coordinates for the box). It is important to note that the TIFF files were generated by first hand-placing the plates on a drum which then was automatically scanned, the results of which were the TIFF files. This process led to visible variation in the position and rotation of the plates insofar as their TIFF file coordinates are concerned. The log books can be obtained at [2] and the data can be found at [3].

3 Analysis and Results

As a first step, we simply fit 7-parameter, 2-d Gaussians to the measured profiles. To do this, we used IDL (Interactive Data Language, by Research

3 ANALYSIS AND RESULTS

Systems, Inc.) and its `gauss2dfit` function. The function fits a model of the form

$$f(x, y) = s + h \exp \left(-\frac{1}{2}((x'/\sigma_x)^2 + (y'/\sigma_y)^2) \right),$$

where

$$\begin{aligned} x' &= (x - \mu_x) \cos \theta - (y - \mu_y) \sin \theta \\ y' &= (x - \mu_x) \sin \theta + (y - \mu_y) \cos \theta. \end{aligned}$$

The parameter s is a vertical shift, h is the height of the Gaussian, σ_x and σ_y represent the spread in the x and y directions, (μ_x, μ_y) represents the center, and θ allows for a rotation.

The results from the beam shot analysis are contained in Table 2, which appears on the next page. We now list specific, significant observations.

- **Variation in plate responses.** The data from plates A21 and A22 from runs 7061 (8/20 23:00), 7066 (8/21 02:50), and 7072 (8/21 06:00) shows that the plates themselves affect the parameter values. In run 7066, the σ_x and σ_y values from plate A21 are 1% and 0.3% lower, respectively, than those from plate A22, whereas in run 7072, they are 2% and 0.7% lower. However, in run 7061, the σ -values from data on plate A22 were lower than those from plate A21 (σ_x was 2% lower, and σ_y was 0.2% lower). Another example of response variation can be seen in the results from run 7061. The σ_x values corresponding to run 7061, image location 1 in Table 2 (page 7) are reasonably consistent, except the value computed from the measurement on plate A25 is over 5.5 pixels larger than the others. This difference is observed in spite of the fact that these plates were stacked together at image location 1.
- **Warping.** In Fig. 4 (on page 8), we show the data from plates A26 and A25 corresponding to run 7061. The four black “holes” which mark the position of the registration posts in the data were in a square pattern of approximately 590 pixels per side. Close examination of the plates with superimposed squares shows that the registration marks are not in a square pattern. This result probably stems from errors in the hand placement of the plate in the scanning process. (The four holes in left side of Fig. 4 are very close to square, but the holes in the right side are not – some are as many as five pixels from where they “should” be).

3 ANALYSIS AND RESULTS

run	il	plate	s	h	μ_x (p)	μ_y (p)	σ_x (p)	σ_y (p)	θ (rad)
6986	i12	A9	1.654e+05	1.377e+08	293.213	343.396	160.904	199.616	0.117
		A10	2.260e+06	1.358e+08	295.806	335.227	156.040	193.040	0.059
7000	i11	A4	7.791e+06	8.727e+07	282.690	78.959	153.406	174.728	0.081
		A3	7.624e+06	9.032e+07	282.057	80.662	155.166	174.664	0.056
7050	i11	A7	5.154e+06	2.585e+08	244.090	248.979	154.063	191.132	0.017
		A8	5.419e+06	2.497e+08	247.479	251.732	152.639	189.797	-0.003
	i12	A18	3.705e+06	2.505e+08	283.588	292.148	157.703	190.497	0.031
		A17	5.154e+06	2.555e+08	289.156	292.127	154.663	188.757	-0.011
7061	i11	A26	4.242e+06	3.888e+08	258.619	250.715	156.771	183.441	0.018
		A25	2.318e+06	4.026e+08	268.837	256.619	162.319	183.262	0.072
		A23	6.181e+06	4.123e+08	260.917	254.392	156.646	181.396	0.018
		A24	6.874e+06	4.100e+08	255.307	251.184	156.206	181.055	-0.009
	i12	A1	4.504e+06	3.678e+08	280.815	293.170	158.505	181.034	0.029
		A2	7.061e+06	4.025e+08	286.462	299.012	157.593	181.638	0.143
		A22	6.520e+06	4.126e+08	277.470	292.172	157.764	179.844	0.025
		A21	6.106e+06	4.267e+08	284.114	282.636	160.987	180.139	-0.050
7066	i11	A21	1.158e+07	6.406e+08	285.243	239.980	155.414	185.424	0.006
		A22	1.098e+07	6.806e+08	282.580	238.941	157.059	186.093	0.006
		A26	1.503e+07	6.816e+08	284.644	240.219	156.490	186.976	0.029
		A25	1.418e+07	6.928e+08	289.110	238.502	155.255	185.690	-0.013
	i12	A9	7.543e+06	6.102e+08	244.686	303.342	156.920	188.508	0.047
		A10	1.202e+07	6.560e+08	251.192	305.774	156.005	184.933	-0.009
		A24	1.105e+07	7.020e+08	250.207	298.301	157.420	185.643	0.034
		A23	1.302e+07	6.683e+08	249.343	306.203	156.469	184.862	0.015
7072	i11	A22	5.642e+06	4.777e+08	281.502	262.112	160.577	185.648	0.029
		A21	8.228e+07	4.761e+08	286.732	260.207	157.230	184.295	-0.023
		A2	8.639e+06	4.157e+08	280.448	258.338	156.920	184.623	0.048
		A4	1.063e+07	4.524e+08	287.645	259.231	154.947	183.115	-0.024
	i12	A28	6.738e+07	4.601e+08	254.371	296.208	159.158	185.606	0.019
		A29	4.978e+06	4.427e+08	259.120	300.104	161.769	186.055	-0.003
		A31	6.917e+06	4.088e+08	255.663	295.880	159.528	183.678	0.019
		A30	4.368e+06	4.356e+08	255.846	292.942	163.746	185.637	-0.052
7130	i11	A9	1.248e+07	5.766e+08	315.618	253.233	154.448	191.508	0.020
		A10	1.140e+07	5.879e+08	316.443	257.476	157.409	190.006	-0.001
		A34	8.896e+06	5.119e+08	312.565	257.819	157.020	194.261	0.031
		A33	9.530e+06	5.737e+08	312.926	255.098	156.608	190.561	-0.020
7209	i11	A29	2.625e+06	1.558e+08	283.047	256.653	153.212	191.656	0.009
		A30	3.677e+06	1.444e+08	286.984	258.138	152.339	188.120	-0.003
		A9	2.668e+06	1.463e+08	282.241	255.786	152.708	190.008	0.022
		A10	2.675e+06	1.294e+08	288.425	252.069	151.583	191.562	-0.005

Table 2: Parameter values for the beam shots

3 ANALYSIS AND RESULTS

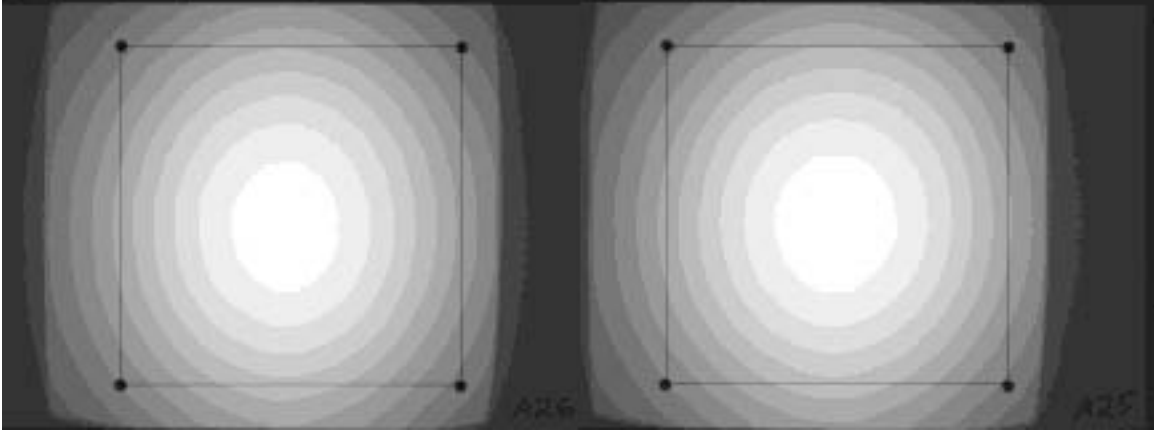
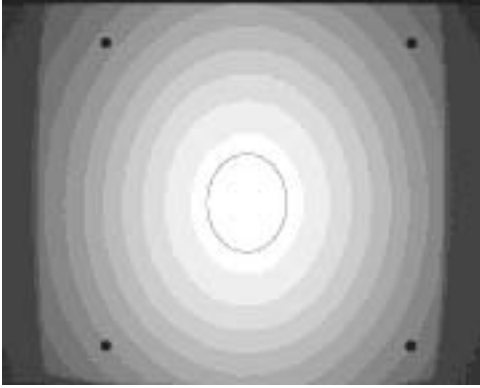


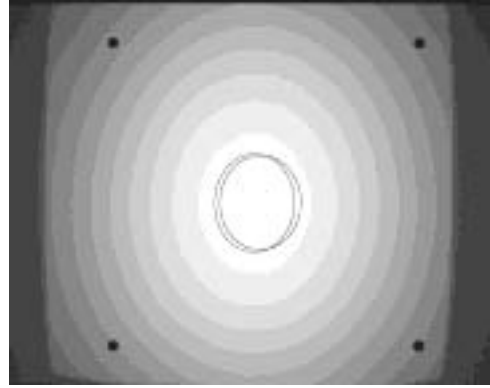
Fig. 4: (Run 7061) Data is “warped”

- **Non-stationarity of beam profile.** Using the data on plate A4 at run 7000 (8/20 00:10) resulted in $\sigma_x = 153.406$ and $\sigma_y = 174.728$, whereas the same plate at run 7072 (8/20 06:00) gives $\sigma_x = 154.947$ and $\sigma_y = 183.115$. These are changes of 1% and 4.8% respectively.
- **Unobscured Shots and the Inadequacy of Gaussian Model.** To simulate the process of fitting a Gaussian to the blank (unobscured) spots in step wedge shots, we chopped the squares of data (within the holes, pictured in Fig. 3 on page 5) into vertical slices and attempted to fit a Gaussian to those slices using IDL’s `gauss2dfit`. We chopped the data from run 7061, plates A25 and A26 into six strips, and found that the resulting σ_x values varied (relatively) by 8.0% and 6.8% respectively, and the σ_y values by 4.0% and 2.8%. This result indicates that our model is not rich enough to capture the RECORDED images. “Recorded” is emphasized, because the record is a combination of beam and plate response. (At more than six slices, the IDL function failed to converge to a solution.)
- **Figures 5 and 6 :** Fig. 5 (on the next page) shows the last six good beam shots as a function of time. Each frame superimposes one new beam contour. The contour chosen was the $\exp(-.125) * \{\text{Max}\}$ (maximum of Gaussian) level curve. Fig. 6 (on page 10) shows the variation of the σ'_x s

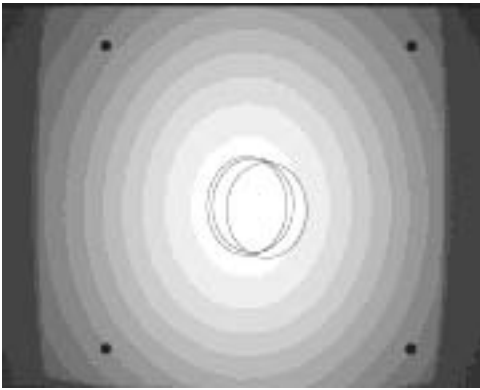
3 ANALYSIS AND RESULTS



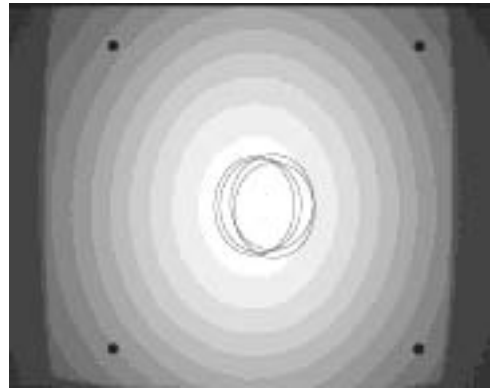
(a) run 7050, 8/20 20:45



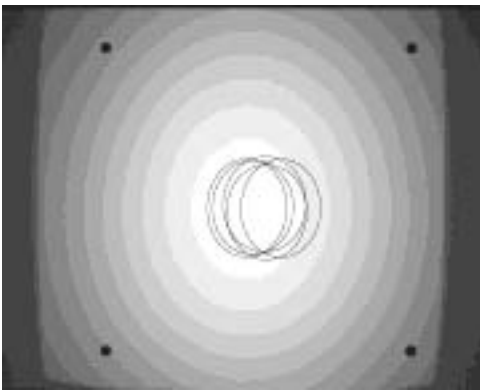
(b) run 7061, 8/20 23:00



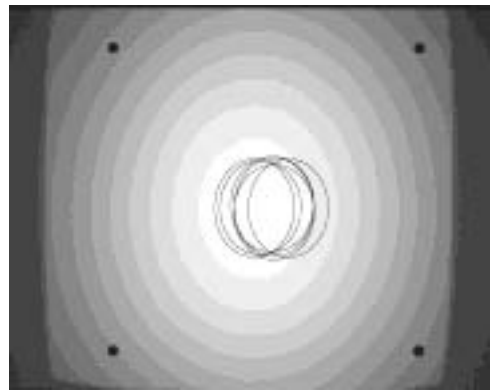
(c) run 7066, 8/21 02:50



(d) run 7072, 8/21 06:00



(e) run 7130, 8/22 05:50



(f) run 7209, 8/23 05:00

Fig. 5: Location of beam over time

4 NEXT STEPS

and the σ'_y s as a function of time. This plot includes all the data from measurements made at image plane 1.

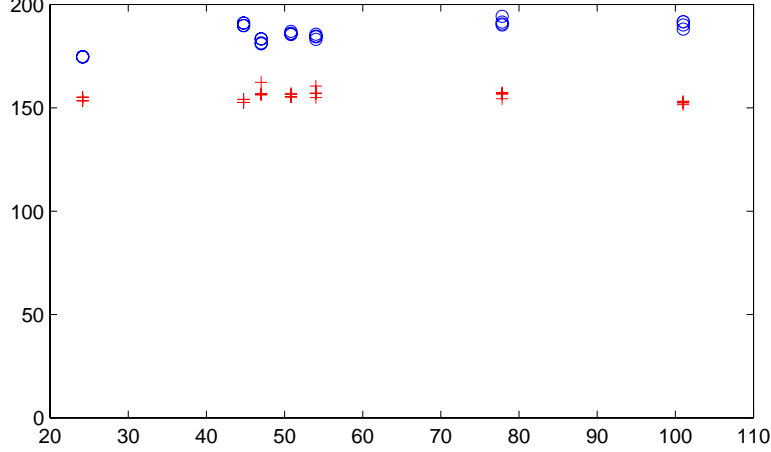


Fig. 6: Variation of σ_x (+’s) and σ_y (circles)

Remark: One can expect the values to change slightly due to measurement noise, but the effect of noise is very small. For example, the σ_y numbers differ (relatively) by about 4.5%, whereas if we add 1% random noise to data and fit a Gaussian, the σ -values change (relatively) by about 0.1%.

Remark: In order to overlay the measurements from multiple plates (taken at the same time), there is a substantial amount of preprocessing required. This requirement is caused by the variability between the plates themselves (for example, the difference between plates A21 and A22 as described on page 6), and by the varying dimensions within the TIFF files as illustrated in Fig. 4.

4 Next Steps

The results in the previous section reveal multiple sources of uncertainty that must be characterized or eliminated in order to obtain tightly constrained final numbers. The next steps or tasks are clearly indicated by the above results. Ultimately these tasks, which are outlined below, will generate

recommendations and new analysis algorithms. It may be the case that this work will result in recommendations of radical changes to the experimental procedure. More optimistically, our recommendations will entail only low-cost experimental modifications and innovative analysis procedures.

We now turn to a list of tasks to be completed next.

- Analysis Tasks:
 - A rigorous sensitivity analysis of the step wedge reconstruction will be carried out. Observed variations – for example, beam profiles variations – will then be propagated forward to see the effect of those variations on the final numbers of interest.
 - A careful study of the flatness or non-flatness of the plate-response will be done next. This work will be done by studying the change of response ratios of pairs of plates from shot to shot (beam and non-beam alike). There will also be carefully designed beam profile experiments at LANSCE (more on this below).
 - Once the variability is in hand and we have rigorous error bars on our estimates of the beam profile and plate sensitivities, we can ask what effect these error bars have on the reconstructed densities. This effect can be calculated by propagating the error bars forward through a magnification factor determined by the inversion method.
 - The response variations will be studied to see if they correlate with overall plate record shape changes. (A higher response due to buckling away from drum should lead to a shorter image in the TIFF file.)
 - A valid model for the beam must be identified because masked (partly obscured) shots depend on the quality of this model for the purposes of beam profile estimation from the intensities at unobscured portions of the radiograph.
- Experimental tasks:
 - We will design and carry out a sequence of experiments at LANSCE using a combination of cameras and plates in an attempt to completely characterize the plate responses. The studies goal is the

5 SUMMARY AND OUTLOOK

successful characterization of the plate responses for each plate. Success means that whatever uncertainties remain will be parameterized in such a way that they can be estimated accurately from experimental shots. It appears we will have to include the design of new procedures to eliminate some of the variability that enters now in the scanning of the plates.

- Fuji will be contacted about the fabrication process of the plates to see if the phosphor concentration is tightly controlled and the distribution is always even across each plate.
- Beam data from Ed Hartouni at Lawrence Livermore will be obtained. We will look into the possibility of doing an experiment to characterize the transfer function that converts a beam spot profile into a post-diffuser profile.
- The entire process, starting with the plate exposure and ending with the drum scanning and plate erasure will be reviewed in an attempt to pin down the anomalous variation in plate response (total response).

5 Summary and outlook

In this preliminary study we found significant variation in the measured beam profiles collected at BNL. Not only was there a drift in the beam centers, there were also significant variations in the beam shape (σ_x and σ_y). What must be kept in mind is that the variations observed so far are a combination of beam variation, plate response variations and scanning inaccuracies. These effects will only be untangled by the more extensive in-depth study we have suggested and are in fact carrying out.

The observed variations and the known coupling of factors contributing to those variations clearly indicates the need for further in-depth study. We give specific guidelines as to what steps should be taken. The first step is a detailed, rigorous sensitivity analysis of the step wedge reconstruction process. This step will permit us to propagate observed variations and uncertainties forward to obtain error bars on the final numbers. In turn, this result will permit us to find improvements in parameterizations, experimental procedure, etc., that will result in smaller error bars.

5 SUMMARY AND OUTLOOK

An accurate parameterized beam model, a precise understanding of the relationship between the pre- and post-diffuser beam profiles, and a record of the post-diffuser beam profile each potentially permit the beam profile to be subtracted from the recorded object radiographs. Each of these will be pursued since it is not clear which will lead to the desired result.

Finally, almost as a side effect of these studies and experiments, we will be in a position to generate definitive reconstructions of the experimental objects studied at BNL in August of 1999. These reconstructions will include tight, rigorous error bars.

REFERENCES

References

- [1] Alexander Saunders. A study of plate response and variability. P-25, Los Alamos National Laboratory.
- [2] BNL E933 unclassified log books. Available online at <https://pcprad9.lanl.gov/RunLogs/Runs1999/LogBooks/>.
- [3] BNL E933 unclassified data. Available online at <https://pcprad9.lanl.gov/RunLogs/praddataags1999/>.

Copies are available for sale to the public from—

National Technical Information Service
U.S. Department of Commerce
5285 Port Royal Road
Springfield, VA 22616
(800) 553-6847