

LA-UR- 99 - 4522

Approved for public release;
distribution is unlimited.

Title: THE EFFECTIVE USE OF ENVIRONMENTAL IMPACT
ASSESSMENTS (EIAs) FOR GEOTHERMAL
DEVELOPMENT PROJECTS

Author(s): Sue Goff, CIT-PO

Submitted to: WORLD GEOTHERMAL CONGRESS 2000
Kyushu - Tohoku, Japan

RECEIVED
SEP 01 1999
OSTI

Los Alamos

NATIONAL LABORATORY

Los Alamos National Laboratory, an affirmative action/equal opportunity employer, is operated by the University of California for the U.S. Department of Energy under contract W-7405-ENG-36. By acceptance of this article, the publisher recognizes that the U.S. Government retains a nonexclusive, royalty-free license to publish or reproduce the published form of this contribution, or to allow others to do so, for U.S. Government purposes. Los Alamos National Laboratory requests that the publisher identify this article as work performed under the auspices of the U.S. Department of Energy. Los Alamos National Laboratory strongly supports academic freedom and a researcher's right to publish; as an institution, however, the Laboratory does not endorse the viewpoint of a publication or guarantee its technical correctness.

DISCLAIMER

This report was prepared as an account of work sponsored by an agency of the United States Government. Neither the United States Government nor any agency thereof, nor any of their employees, make any warranty, express or implied, or assumes any legal liability or responsibility for the accuracy, completeness, or usefulness of any information, apparatus, product, or process disclosed, or represents that its use would not infringe privately owned rights. Reference herein to any specific commercial product, process, or service by trade name, trademark, manufacturer, or otherwise does not necessarily constitute or imply its endorsement, recommendation, or favoring by the United States Government or any agency thereof. The views and opinions of authors expressed herein do not necessarily state or reflect those of the United States Government or any agency thereof.

DISCLAIMER

Portions of this document may be illegible in electronic image products. Images are produced from the best available original document.

THE EFFECTIVE USE OF ENVIRONMENTAL IMPACT ASSESSMENTS (EIAs) FOR GEOTHERMAL DEVELOPMENT PROJECTS

Sue Goff

Los Alamos National Laboratory, Los Alamos, New Mexico, USA 87545

Key Words: environmental impacts, environmental assessments

and Public Participation plans should also be included as part of the environmental analysis process

ABSTRACT

Both the developed and developing nations of the world would like to move toward a position of sustainable development while paying attention to the restoration of natural resources, improving the environment, and improving the quality of life. The impacts of geothermal development projects are generally positive. It is important, however, that the environmental issues associated with development be addressed in a systematic fashion. Drafted early in the project planning stage, a well-prepared Environmental Impact Assessment (EIA) can significantly add to the quality of the overall project. An EIA customarily ends with the decision to proceed with the project. The environmental analysis process could be more effective if regular monitoring, detailed in the EIA, continues during project implementation. Geothermal development EIAs should to be analytic rather than encyclopedic, emphasizing the impacts most closely associated with energy sector development. Air quality, water resources and quality, geologic factors, and socioeconomic issues will invariably be the most important factors. The purpose of an EIA should not be to generate paperwork, but to enable superb response. The EIA should be intended to help public officials make decisions that are based on an understanding of environmental consequences and take proper actions. The EIA process has been defined in different ways throughout the world. In fact, it appears that no two countries have defined it in exactly the same way. Going hand in hand with the different approaches to the process is the wide variety of formats available. It is recommended that the world geothermal community work towards the adoption of a standard. The Latin America Energy Organization (OLADE) and the Inter-American Development Bank (IDB)(OLADE, 1993) prepared a guide that presents a comprehensive discussion of the environmental impacts and suggested mitigation alternatives associated with geothermal development projects. The OLADE guide is a good start for providing the geothermal community a standard EIA format. As decision makers may only read the Executive Summary of the EIA, this summary should be well written and present the significant impacts (in order of importance), clarifying which are unavoidable and which are irreversible; the measures which can be taken to mitigate them; the cumulative effect of impacts; and the requirements for monitoring and supervision. Quality plans

1. INTRODUCTION

Geothermal power is a relatively benign source of energy. There are, however, certain negative impacts that this development could have if there are not appropriate mitigation actions and monitoring plans in place. With the imminent passage of environmental laws and the strengthening of environmental agencies worldwide, it is becoming increasingly important that countries prepare to address environmental issues in a systematic manner.

The environmental assessment process has been defined differently everywhere. In fact, it appears that no two countries have defined it in exactly the same way. General blanket statements are often made that the developing countries are all behind the industrial countries in terms of environmental issues. It is interesting to note that the Philippines has required EIAs for certain projects since 1977. The Federal Republic of Germany started to do so nearly a decade later (Biawas, 1991). In addition to the different approaches to the process are the wide variety of formats for EIAs that are available. This paper presents the elements that should be included as part of a comprehensive geothermal development project EIA. The goal is the establishment of an international standard.

2. ENVIRONMENTAL IMPACT ASSESSMENTS (EIAs)

2.1 Purpose and Scope

The purpose of an EIA is to help public officials make decisions that are based on an understanding of environmental consequences and take proper actions. The intent should not be to generate paperwork, but to enable superb response. This requires that an EIA be analytic rather than encyclopedic. Not only should significant environmental issues deserving of study be identified, insignificant issues should be de-emphasized, narrowing the scope of the environmental impact assessment process accordingly (Shipley Associates, 1993).

The quality of EIAs could be improved with some relatively simple measures. There are many examples of EIAs in

which massive amounts of money and effort were expended in collecting and reporting data on every aspect of the environment and producing voluminous reports in which there was a lot of insignificant and irrelevant information than there were findings of significance. A first step in quality improvement is to be sure that EIA specifications are extremely clear as to the format and content of the expected document.

2.2 Quality EIAs

The EIA is commonly carried out fairly late in the project planning process. This often means that only single alternative impacts are identified. The EIA process mostly ends after the decision to proceed with the project has been taken. The environmental assessment process will only be effective if there is regular monitoring during project implementation and operation so that appropriate environmental impacts can be identified and measured. Unfortunately the EIA is often undertaken to satisfy the requirements of banks and donor agencies. Thus, the EIA gets done, but has only a minor role in improving environmental conditions of projects.

The US National Environmental Policy Act Regulations (DOE, 1986; EPA, 1985) state that procedures must insure that environmental information is available to public officials and citizens before decisions are made and before actions are taken. The information must be of high quality. Most important, documents must concentrate on issues that are truly significant to the action in question, rather than amassing needless detail. This requires that an analytic rather than encyclopedic environmental impact statement be prepared. Ultimately, of course, it is not better documents, but better decisions that count.

EIAs should be prepared using an inter-disciplinary approach to insure the integrated use of the natural and social sciences and the environmental design arts. The disciplines of the preparers must be appropriate to the scope and the issues identified in the scoping process. The EIA should list the names, together with their qualifications of the persons who were primarily responsible for preparing the EIA or significant background papers, including basic components of the document. Where possible the persons who are responsible for a particular analysis, including analyses in background papers, are to be identified. Following these guidelines will insure that appropriate standards will be applied and carried out with reasonable safeguards. This is particularly important to ensure quality, especially when consultants and contractors subcontract out the work.

Another quality improvement for EIA preparation is that any methodologies used should be referenced, by explicit reference, to the scientific and other sources relied upon for conclusions in the EIA. Discussions of the methodology should appear in the appendix. Failure to do so reflects poorly on scientific integrity.

In addition, the EIA should contain an executive summary which adequately and accurately summarizes the EIA. Often decisions makers may read only this summary, therefore it must present the significant impacts (in order of importance), clarifying which are unavoidable and which are irreversible; the measures which can be taken to mitigate them; the cumulative effect of the impacts; and the requirements for monitoring and supervision.

2.3 Transmission Lines and Substations

Because of increasing public awareness of possible health concerns, potential problems with public acceptance and environmental incompatibilities related to transmission lines and substations should be identified and addressed early in the development process. The present heightened public concern about living near high-voltage transmission lines stems mostly from questions about possible health effects from long-term exposure to the electromagnetic fields (EMF) which they produce. Both fields always occur together when they originate from sources of electrical power. There is no clear-cut public policy on EMF issues. With or without solid evidence, some communities are setting standards limiting the magnitude of electromagnetic fields at the edge of the Right-Of-Way. Although significant health effects cannot be established for electromagnetic exposure from the available information, the present California Energy Commission approach to 60-Hz field control is to ensure that public exposures to fields from future transmission lines do not exceed those associated with the presence of existing lines (California Energy Commission, 1992). Many public commissions have endorsed a concept called "prudent avoidance" which means that exposure to magnetic fields should be reduced as much as possible.

2.4 Public Participation

Public opinion is a powerful force and, if unanticipated and unchecked, can delay or cancel otherwise sound projects. Meaningful public participation requires that information be available to every group that wants it or has an interest in a project. This kind of participation has not been found to hurt projects. In fact, excluding the public may actually cause more frequent delays. It can also result in poorer quality projects.

EIAs provide numerous opportunities for coordinating environmental work in a country, and should be linked to other environmental strategies, action plans, and freestanding projects. EIAs provide a formal mechanism for interagency coordination and for addressing the concerns of affected groups and local nongovernmental organizations (NGOs). The concerns of communities affected by the project and of local NGOs with environmental issues also should be covered in the EIA. These groups can provide information useful for the EIA. In fact, sometimes they are the only source of detailed knowledge about the local study area.

After initial scoping of the environmental assessment, a summary or outline should be circulated to known concerned groups and individuals for comment to "flesh out" concerns. It is better to uncover concerns and potential problems early in the project development than to prepare detailed analyses on non-critical issues or to omit key areas from the analysis.

2.5 Community Relations Program Plan.

A Community Relations Program plan is also useful. The plan can include a brief description of the energy project; a background on the developer and its environmental programs; description of the affected community; and concerns about environmental issues.

Designated Coordinator

It is a good idea to have a designated coordinator to assist the public in locating the information it needs on the EIA and the EIA process. This person could also act as the primary contact for the public on a number of other issues.

Public Participation Scheme

A scheme for public participation opportunities in the EIA process is presented in Figure 1. It provides for public comment during the preparation of the final draft of the EIA, and during the preparation of the monitoring and mitigation work plan and final report.

Quality Plan

Quality assurance serves as both a guideline and a management tool to ensure that all activities are performed under a program plan in an appropriate, well-regulated manner that generates reliable, scientifically valid, and thoroughly documented data. It is largely an institutional concern. Quality control is a technical concern. It is a process for measuring the actual quality performance of a product against an applicable standard or specifications. The ability to provide data whose quality is sufficient to meet program goals is a concern that falls within quality control. Both quality assurance and quality control are important parts of a "Quality Plan."

The Quality Plan implementation method is like the scientific method and comprises certain basic steps that include: Plan what you do; Do what you plan; Document what you do; Assess the results; Improve the process.

These steps are all essential to the good management and effective conduct of operations, processes and activities in industry, business and science. The plan is a documented description of the environmental and monitoring activities and how they are to be conducted. The Quality Plan and accompanying procedures describe what is actually done, or what is intended to be done. Figure 2 presents a sample "Quality Program Plan Outline."

3. OLADE GUIDE REVIEW

OLADE and the IDB (OLADE, 1993) prepared a guide whose purpose is to provide tools for integrating environmental factors into the plan, design and operation of energy projects. The guide presents comprehensive discussions of the environmental impacts associated with geothermal development projects and suggested mitigation alternatives. The guide is more useful to geothermal professionals than to environmental scientists and regulators. There are some improvements that could be made to the guide to make it a more valuable tool. For example, discussions of environmental successes and failures associated with geothermal development projects would improve the guide's effectiveness in training and extension activities. Details for formulating an effective Executive Summary would also improve the usefulness of the guide as a training manual.

From a technical perspective, the OLADE guide does not adequately address landslide hazards. Geothermal sites and volcanic regions often exhibit significant landslide hazard. Such sites are typically characterized by sloping, hydrothermally-weakened, saturated ground, and substantial volcanic activity. Engineering works associated with geothermal sites, including wells, pipeline networks, and modification of ground by cuts and fills, may also contribute to landsliding. Significant hazard is not restricted to extreme events. Fatalities and damage can occur with landslides of modest size, as illustrated by slump-and-debris flow of ordinary proportions that in 1991 caused 23 fatalities at the Zunil geothermal field in Guatemala (Flynn et al, 1991) (Figure 3). For most geothermal areas it is the small or moderate-sized landslide that is of most influence, providing the higher-probability hazard (Voight, 1992). It is imperative that a standard EIA format include some discussion of the impacts of landslides and suggested mitigation options for landslide hazards.

4. RECOMMENDATIONS

A standard EIA format for geothermal development projects would greatly assist the international geothermal community. A well-prepared EIA can add significantly to the quality of the overall project. This standard format should be a required part of an energy development bid package.

Utility company (or appropriate governmental personnel) should spend the time understanding the essence of an EIA. This requires learning how to do a solid review; insisting that whoever the team putting the EIA together spend adequate time in the field assessing the environmental conditions at the development project; knowing who will be preparing the document, the disciplines that will be represented, and the qualifications of the team; insisting that the team all be in the field; spending time with the team preparing the EIA; and requiring monthly reports as part of the overall bid specifications.

Countries should consider assembling a local team to write EIAs by "twinning" or "teaming" with other organizations such as universities, other ministries, and private companies. It might also make sense to consider the possibility of teaming with the electric utilities of neighboring countries to achieve the same effect. Environmental issues seldom have borders. (The Río Paz for example is on the border with Guatemala and there is a water quality treaty in place between El Salvador and Guatemala.)

The "standard" should allow for EIAs that are analytic not encyclopedic. The EIAs should concentrate on impacts most closely associated with energy sector development. Air quality, water resources and quality, geologic factors, and socioeconomic issues will be consistently the most important factors. If working near protected areas, biological/ecological factors will increase in importance. The positive impacts that energy development projects could have on ecological issues could be stressed by including a reforestation, revegetation program affiliated with the development component. This will not necessarily be costly and will add to the overall improvement of environmental quality in the country.

In countries with no formal regulations for either air emission and quality standards or water quality standards, the utility or other government agency should adopt as quickly as possible its own "Energy Sector Guidelines" for air emissions, air quality, and water quality. This will make monitoring programs more meaningful and address the issue of not doing anything because there are no standards in place. It is also essential to establish environmental control procedures and standards to ensure that program activities are carried out with reasonable environmental safeguards. To accomplish this a Quality Plan must be developed. Environmental problem definitions and mitigation plans rely heavily on the physical and more quantitative sciences of chemistry, geology, and engineering. Data interpretation requires more than just knowing which endangered species are affected.

The purpose of an EIA should be not to generate paperwork, but to foster excellent action. The process should be intended to help public officials make decisions that are based on understanding of environmental consequences and take proper actions.

The inception of a meaningful public participation plan should be part of an energy sector development program. For the plan to be meaningful, information must reach the widest audience possible. It is important that governments

not be secretive with the details of its project plans, potential environmental impacts, and mitigation alternatives. Of supreme importance is to never assume the public is ignorant. The US nuclear power industry is a prime example of what can happen when the public isn't consulted or taken seriously during large energy development projects.

ACKNOWLEDGEMENTS

I am grateful to Fraser and Daniel Goff, Karon Stine and Anthony Mancino.

REFERENCES

- Biawas, A. K. (1991). Environmental Assessment: A View from the South. In *International Society for Ecological Modeling, Abstract in Technology and Environmental*. University of Illinois at Urbana-Champaign, USA, pp 22.
- California Energy Commission. (1982). *High-voltage transmission lines, summary of health effects studies*. Sacramento. 27p
- DOE (US Department of Energy). (1986). *Quality Assurance*. DOE Order 5700.6B, Washington, D.C.
- EPA (US Environmental Protection Agency). (1985). *Regional Assistance for Preparing Quality Assurance Project Plans*. ROQA-005/85, Washington, D.C.
- Flynn, T., Goff, F., Van Eeckhout, E., Goff, S., Ballinger, J., and Suyama, J. (1991) Catastrophic Landslide at Zunil I Geothermal Field, Guatemala, January 5, 1991. *Geothermal Resources Council Transactions*. Vol. 15, pp 425-431.
- Olade. (1993). *Guía para la evaluación de impacto ambiental de explotaciones geotérmicas con fines energéticos*. Quito, Ecuador. 161 p.
- Shipley Associates. (1993). *How to Write Quality EISs and EASs*. Bountiful, Utah, 84 p. and annexes.
- Voight, B. (1992). Causes of Landslides: Conventional Factors and Special Consideration For Geothermal Sites and Volcanic Regions. *Geothermal Resources Council Transactions*. Vol. 16, pp 529-533.

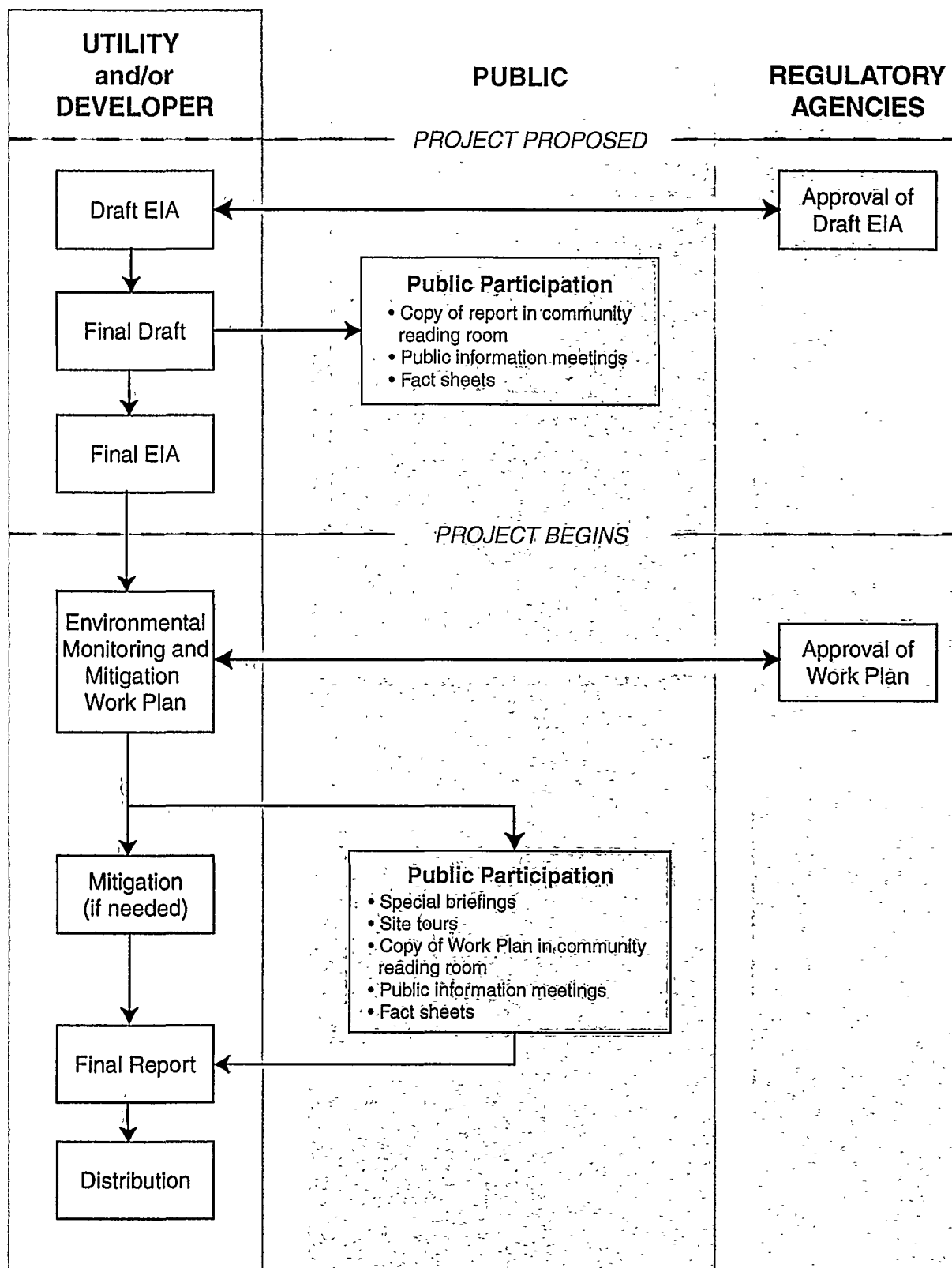


Figure 1. Suggested scheme for public participation opportunities.

QUALITY PROGRAM PLAN

Outline

1. INTRODUCTION

1.1 Scope

1.2 Policy Statement

2. ORGANIZATION

2.1 Responsibilities

3. QUALITY ASSURANCE PROGRAM

3.1 Personnel Qualifications and Training

3.2 Data Quality Objectives

3.3 Assessment of Data Quality

3.3.1 Precision

3.3.1.1 Standard Reference Materials

3.3.1.2 Instrument Checks

3.3.2 Accuracy

3.3.2.1 Traceability of Instruments

3.3.2.2 Traceability of Standards

3.3.2.3 Traceability of Samples

3.3.2.4 Traceability of Data

3.3.2.5 Reference, Spiked, or Blind Samples

4. CONTROL OF PURCHASED ITEMS AND SERVICES

5. STANDARD OPERATING PROCEDURES

6. DOCUMENT CONTROL

7. CONTROL OF MEASURING AND TEST EQUIPMENT

7.1 Identification of Equipment

7.2 Maintenance and Calibration of Measuring and Test Equipment

8. CORRECTIVE ACTION

9. RECORDS

10. QUALITY IMPROVEMENT

Figure 2. Quality Program Plan Outline

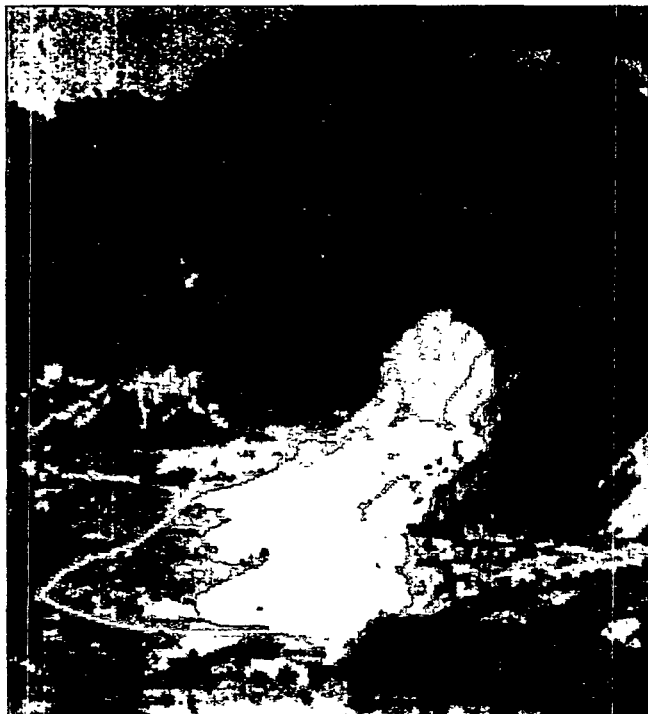


Figure 3. Photo looking west at catastrophic landslide that killed 23 people on January 5, 1991 at the Zunil I geothermal field, Guatemala. The area is heavily cultivated from terraced fields. Because of its fluidized character, many local inhabitants mistakenly thought the slide was a white lava flow. Note the steam near the headwall of the slide from damaged well ZCQ-4.