



## Revista Brasileira de Hematologia e Hemoterapia Brazilian Journal of Hematology and Hemotherapy

[www.rbhh.org](http://www.rbhh.org)



### Review article

# Klotho: its various functions and association with sickle cell disease subphenotypes



Ana Paula Almeida de Souza Pacheco<sup>a</sup>, Marilda Goncalves<sup>a,b,\*</sup>

<sup>a</sup> Fundação Oswaldo Cruz (FIOCRUZ), Salvador, BA, Brazil

<sup>b</sup> Universidade Federal da Bahia (UFBA), Salvador, BA, Brazil

#### ARTICLE INFO

##### Article history:

Received 19 March 2014

Accepted 21 July 2014

Available online 5 October 2014

##### Keywords:

Vitamin D

Oxidative stress

Sickle cell disease

Endothelium

Gene polymorphism

#### ABSTRACT

The Klotho protein, whose gene has predominant renal expression, acts in the control of serum phosphorus and 1,25-dihydroxyvitamin D3 and regulates the function of ion channels. It also participates in the mechanism of protection against oxidative stress and acts on the vascular endothelium by inducing the production of nitric oxide. Mutations that reflect defects in the Klotho gene expression may be implicated in the onset of osteonecrosis, priapism, and leg ulcers in patients with sickle cell disease, as a result of oxidative stress and endothelial impairment, important factors in the development and severity of this disease. Previous reports regarding the association of Klotho single nucleotide polymorphisms with sickle cell disease subphenotypes have found that these polymorphisms are important to identify genetic markers of risk in these individuals and allow early and more effective therapeutic intervention.

© 2014 Associação Brasileira de Hematologia, Hemoterapia e Terapia Celular. Published by Elsevier Editora Ltda. All rights reserved.

## Introduction

Klotho is a gene that consists of five exons and is located on chromosome 13q12 in humans. Its expression occurs predominantly in the kidney distal convoluted tubules and the choroid plexus of the brain. Endocrine organs (pituitary gland, parathyroid gland, pancreas, ovary, testis and placenta), the heart and pancreatic  $\beta$  cells also express Klotho.<sup>1–7</sup>

Klotho generates two transcripts, a transmembrane protein and a secreted protein, resulting from alternative splicing to the third exon. Additionally, the transmembrane protein

can be cleaved by  $\alpha$ - and  $\beta$ -secretases to generate a secreted protein, which is, two-times longer than the alternatively spliced transcript.<sup>4,6,8–11</sup> So, the effects of the Klotho protein extend beyond the tissues that express the gene because of its humoral factor function. Klotho reaches the systemic circulation by secreted fractions, and is released into the extracellular space and subsequently into circulation; it is found in blood, urine and cerebrospinal fluid (Figure 1).<sup>11–13</sup>

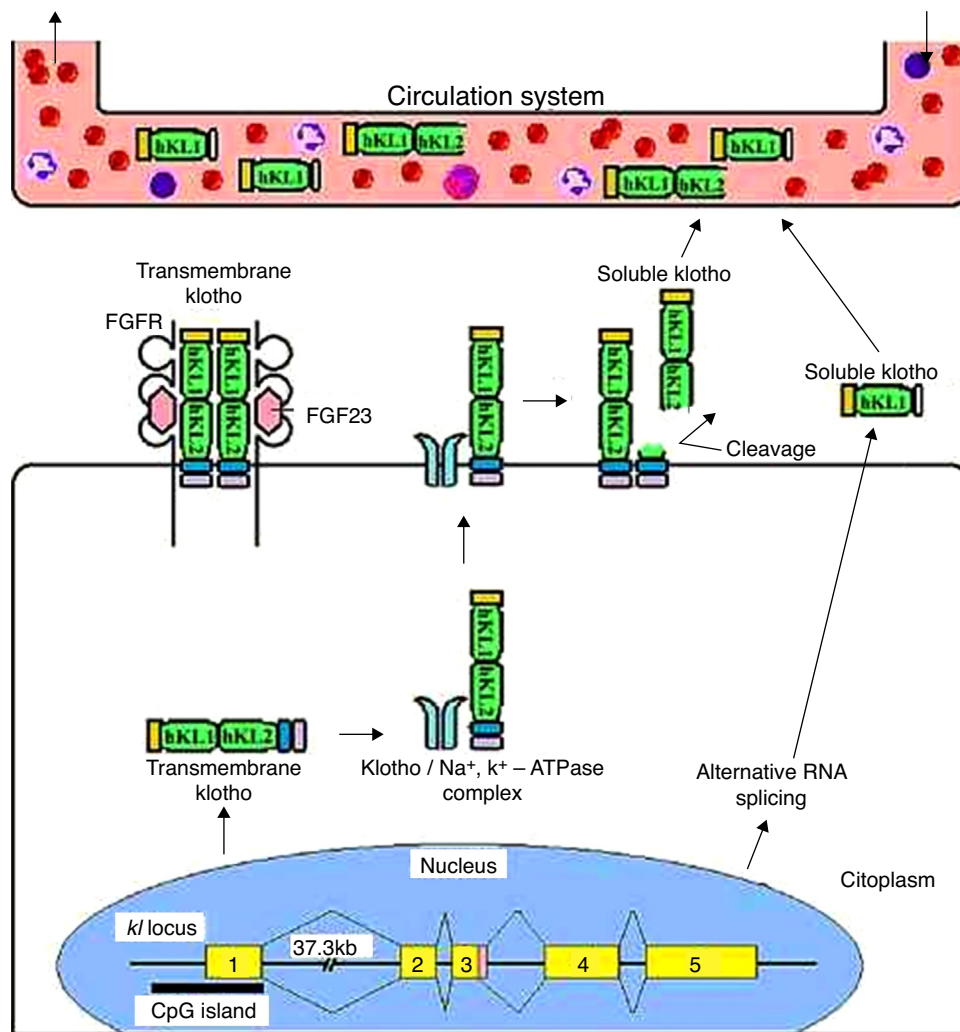
Multiple aging phenotypes result from defects in gene expression of Klotho,<sup>11</sup> such as growth retardation, hyperphosphatemia, moderate hypercalcemia, vascular and soft tissue calcification, and high levels of 1,25-dihydroxyvitamin

\* Corresponding author at: Centro de Pesquisas Gonçalo Moniz, Fundação Oswaldo Cruz (FIOCRUZ), Rua Waldemar Falcão, 121, Candeal, 40296-710 Salvador, BA, Brazil.

E-mail address: [mari@bahia.fiocruz.br](mailto:mari@bahia.fiocruz.br) (M. Goncalves).

<http://dx.doi.org/10.1016/j.bjhh.2014.07.022>

1516-8484/© 2014 Associação Brasileira de Hematologia, Hemoterapia e Terapia Celular. Published by Elsevier Editora Ltda. All rights reserved.



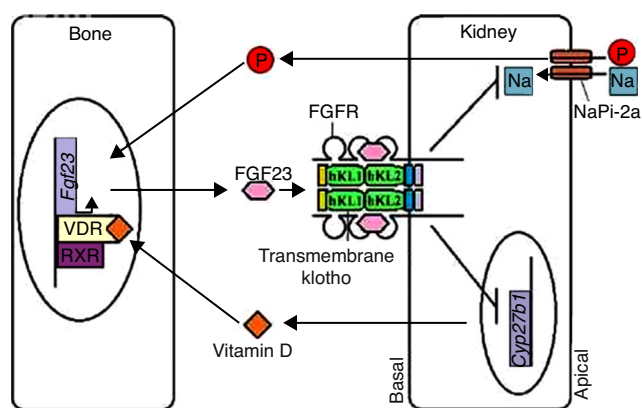
**Figure 1 – Transmembrane and secreted Klotho protein processing.** The transmembrane Klotho protein acts as a co-receptor for fibroblast growth factor 23 signaling. This transmembrane protein forms complexes with Na<sup>+</sup>/K<sup>+</sup>-ATPase channels and is recruited to the cell surface. Once on the surface, the Klotho protein is cleaved by secretases forming a soluble form of Klotho. This form enters the circulatory system similar to the form produced by alternative splicing, and acts on other organs as a humoral factor.

D<sub>3</sub> (1.25(OH)<sub>2</sub>D<sub>3</sub>) and fibroblast growth factor 23 (FGF23). These defects in animals result in a shortened life expectancy when compared to wild-type phenotypes. Additionally, the *kl*<sup>-/-</sup> animal exhibits hypokinesia, gait changes, and atrophy of the genitals, skin and thymus.<sup>3,14</sup> Klotho single nucleotide polymorphisms (SNPs) have been associated with subphenotypes of sickle cell disease (SCA),<sup>15-19</sup> a monogenic autosomal recessive disorder, characterized by a  $\beta$ -globin gene (*HBB*) mutation which results in the formation of the S variant hemoglobin (Hb S).

Given the possible role of Klotho as one of the genes responsible for the phenotypic variability between patients with sickle cell disease (SCD), the aim of this paper is to review the various features of the Klotho protein, as well as discuss current literature about the association between Klotho polymorphisms and SCD subphenotypes.

### Klotho participates in the regulation of the bone-kidney endocrine axis

The phenotypic similarity between *kl*<sup>-/-</sup> mice and mice with reduced *Fgf23* expression (*Fgf23*<sup>-/-</sup> mice) suggests a functional relationship between Klotho and FGF23. The Klotho transmembrane protein is a required co-factor/co-receptor for FGF23 signaling (Figure 1), and the inactivation of the Klotho-FGF23 axis in *kl*<sup>-/-</sup>/*Fgf23*<sup>-/-</sup> mice results in increased expression of co-transporter sodium-phosphate type-2a (NaPi-2a).<sup>14</sup> FGF23, in turn, is a bone-derived hormone that acts by inhibiting kidney phosphate reabsorption and vitamin D biosynthesis. FGF23, incorporated into the ternary complex of FGF23-FGFR-Klotho, inhibits NaPi-2a activity, increasing phosphaturic activity. Therefore, FGF23 and



**Figure 2 – Phosphate and vitamin D homeostasis regulation.** Vitamin D upon binding to its vitamin D receptor (VDR) in osteocytes induces VDR-retinoid X receptor (RXR) heterodimer binding, which activates *Fgf23* expression. Phosphate also induces a similar reaction. *FGF23* then binds to the FGFR-Klotho complex in renal tubular cells, blocking phosphate reabsorption by NaPi-2a transporters and vitamin D synthesis by suppressing the *Cyp27b1* expression and upregulating *Cyp24* expression. This mechanism controls the phosphate and vitamin D levels in the body; the *Fgf23* expression increases when the levels of these two factors are elevated. After re-establishing normal levels, *Fgf23* expression is downregulated and maintains phosphate reabsorption and vitamin D synthesis.

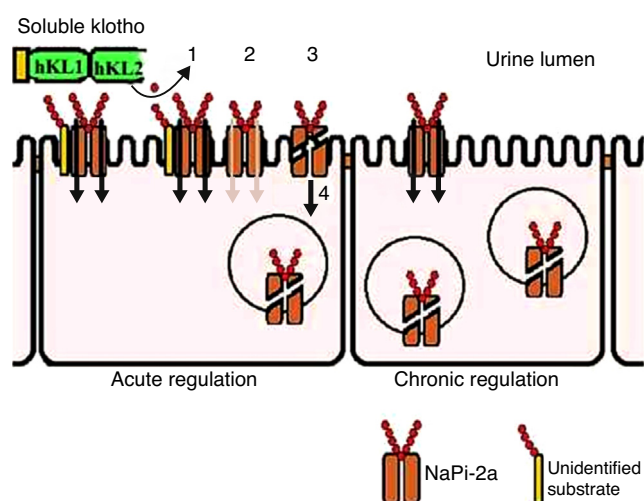
Klotho act on the bone-kidney endocrine axis to maintain phosphate homeostasis (Figure 2).<sup>4,14,20,21</sup>

This bone-kidney endocrine axis also regulates vitamin D levels. High serum phosphate levels increase *Fgf23* expression in the bone. *FGF23* represses *Cyp27b1* expression and increases *Cyp24* expression, reducing  $1\alpha$ -hydroxylase levels. The end result is the reduction of  $1.25(\text{OH})_2\text{D}_3$  serum synthesis (Figure 2). These mechanisms are essential for vitamin D homeostasis, preventing hypervitaminosis D. It has also been found that the administration of  $1.25(\text{OH})_2\text{D}_3$  induces the expression of Klotho in the kidney, which reinforces the integrated mechanism between *FGF23* and Klotho in this axis.<sup>4,22</sup>

Disturbances of these negative feedback loops can also lead to a hypercalcemic state because vitamin D also promotes gut calcium absorption.<sup>4,23,24</sup>

From observations of *Fgf23*<sup>-/-</sup> mice, there is additional phosphaturic activity from secreted Klotho protein that is *FGF23* independent. The Klotho glycosidase activity acts on an unknown substrate that is present in the brush border of kidney proximal tubular cells. This modification is accompanied by proteolytic cleavage (this step occurs, but it is not required to inactivate the transporter) and NaPi-2a co-transporter internalization (Figure 3).<sup>2</sup>

Klotho can also inhibit phosphate transport in vascular smooth muscle cells through NaPi class 3 transporters, Pit-1 and Pit-2, preventing vascular calcification events, because excessive phosphate influx in these cells promotes a cascade of events responsible for the calcium and phosphate mineralization in their interior.<sup>25</sup>



**Figure 3 – Soluble Klotho protein acts on phosphate transport in the proximal tubules.** In acute regulatory conditions, Klotho modifies an unknown substrate, glycan (1), reducing the phosphate transporter coupled to sodium (2). Additionally, the carrier undergoes proteolytic cleavage (3) and subsequent endocytosis (4). Upon sustained elevated soluble Klotho levels or chronic regulation conditions, there is ongoing reduction of these transporters at the cell surface. Adapted from Hu et al.<sup>2</sup>

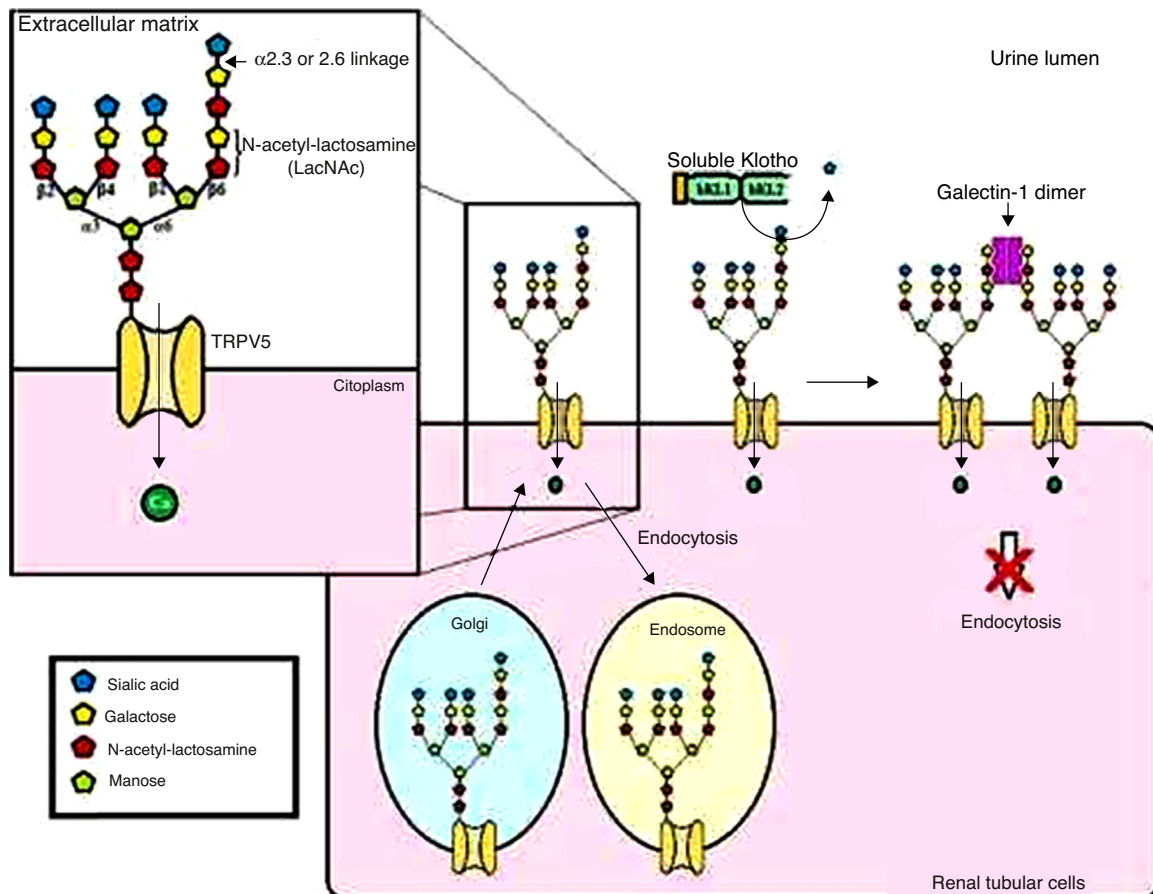
### Effect of the Klotho protein on ion channel regulation

The secreted Klotho protein regulates other ion channels, such as the transient receptor potential cation channel, member 5 of subfamily V (TRPV5), which is primarily responsible for  $\text{Ca}^{2+}$  entry during kidney transepithelial reabsorption. Secreted Klotho protein inhibits TRPV5 internalization through its sialidase activity on this ion channel, increasing TRPV5 cell surface levels and with this the  $\text{Ca}^{2+}$  inflow and kidney reabsorption (Figure 4).<sup>4,26,27</sup>

The retaining mechanism of the cell surface ion channel occurs during the regulation of potassium channels in the kidney outer medulla (ROMK1), resulting in an increase in ROMK1 in the plasma membrane of renal tubular cells, with increased potassium secretion in urine.<sup>28</sup>

### Klotho as an insulin/growth factor insulin-like 1 signaling mechanism regulator

Klotho protein is associated with insulin/growth factor insulin-like 1 (IGF-1) signaling pathway regulation, which results in oxidative stress suppression. Transcription factors known as nuclear mammalian forkhead box O (FOXO) are factors that directly bind to antioxidant enzyme promoters, such as catalase and mitochondrial manganese-superoxide dismutase (SOD2), inducing enzyme expression. As a result, there is increased removal of reactive oxygen species (ROS), conferring oxidative stress resistance. These FOXOs are negatively



**Figure 4 – General model for TRPV5 regulation by Klotho.** Soluble Klotho removes the sialic acid residue attached by  $\alpha 2.6$  bonding in the N-acetyl-lactosamine (LacNAc) repeats of the TRPV5 N-glycans. The LacNAc, when exposed, can bind to its ligand, the galectin-1 dimer, in the extracellular matrix. This mechanism reduces carrier internalization.

regulated by enabling insulin/IGF-1 signaling, which promotes the serine-threonine kinase Akt phosphorylation. The Akt has the ability to phosphorylate FOXO, resulting in its exclusion from the nucleus and inactivation. Klotho protein acts by inhibiting insulin/IGF-1 signaling, decreasing FOXO phosphorylation and increasing SOD2 expression and minimizing oxidative stress.<sup>11,29</sup>

### Effect of Klotho protein on the vascular endothelium

Both secreted Klotho proteins have anti-apoptotic and anti-aging activity on vascular endothelial cells. These cells are continuously exposed to Klotho. The vascular endothelium, due to the release of nitric oxide (NO) in response to specific agonists such as acetylcholine, plays an important role in vascular tone maintenance. It has been shown that mutations in the Klotho gene significantly attenuate endothelium-dependent vasodilation of the aorta and arterioles in response to acetylcholine.<sup>30,31</sup> There is evidence that Klotho in the secreted and membrane bound forms can up-regulate NO production, although the mechanisms are still unknown.<sup>4,11</sup> It is believed that defects in the Klotho gene

down-regulate endothelium NO synthase (eNOS). The effects of Klotho on the vascular endothelium are protective against endothelial dysfunction.

KL<sup>-/-</sup> mice subjected to the induction of lower limb ischemia exhibited persistent blood flow loss and decreased capillary capacity, in contrast to the high perfusion observed in heterozygous Klotho animals (kl<sup>+/-</sup>) and wild-type animals. KL<sup>-/-</sup> animals present with deficient angiogenesis and reduced levels of urinary NO and tissue cyclic guanosine monophosphate (cGMP), with high rates of progression to spontaneous amputation.<sup>32</sup> Moreover, the Klotho protein is capable of increasing angiotensin-converting enzyme-I activity in endothelial cells by the activation of the cyclic adenosine monophosphate (cAMP)-protein kinase A (PKA) pathway,<sup>33</sup> suggesting involvement of the renin-angiotensin system and NO in vascular tone maintenance.

The Klotho protein has an anti-apoptotic effect on human umbilical vein endothelial cells, with decreased caspase-3 and caspase-9 activity, therefore acting as a humoral factor. It retards cellular aging by mechanisms involving p53/p21.<sup>34</sup> Furthermore, from its ability to bind several members of the Wnt family, Klotho can suppress biological activity, working as an antagonist to prevent accelerated cellular aging.<sup>13</sup>



**Table 1 – A list of Klotho SNPs significantly associated with sickle cell disease subphenotypes.**

SNP	Subphenotypes	References
rs211234	Osteonecrosis	Baldwin et al. <sup>15</sup>
rs211235	Osteonecrosis	Baldwin et al. <sup>15</sup>
rs211239	Osteonecrosis	Baldwin et al. <sup>15</sup>
rs211239	Priapism	Nolan et al. <sup>17</sup>
rs2149860	Osteonecrosis	Baldwin et al. <sup>15</sup>
rs2149860	Leg ulcers	Nolan et al. <sup>18</sup>
rs2249358	Priapism	Nolan et al. <sup>17</sup>
rs480780	Osteonecrosis	Baldwin et al. <sup>15</sup>
rs499091	Osteonecrosis	Baldwin et al. <sup>15</sup>
rs516306	Osteonecrosis	Baldwin et al. <sup>15</sup>
rs516306	Leg ulcers	Nolan et al. <sup>18</sup>
rs565587	Osteonecrosis	Baldwin et al. <sup>15</sup>
rs576404	Osteonecrosis	Baldwin et al. <sup>15</sup>
rs685417	Osteonecrosis	Baldwin et al. <sup>15</sup>
rs685417	Leg ulcers	Nolan et al. <sup>18</sup>

The Klotho protein has been assessed as a therapeutic tool in particular in respect to preventing activity of age-related phenotypes.<sup>30,35,36</sup> The main aim of this review is to describe the possible role of the Klotho protein as a biomarker in sickle cell disease.

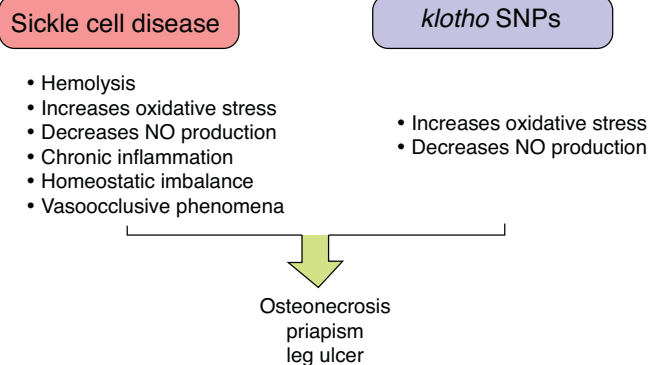
### Klotho protein in sickle cell disease

Some studies have evaluated the association of Klotho SNPs with subphenotypes of individuals with SCA, one type of SCD.<sup>15-19</sup> It is a disorder of monogenic autosomal recessive inheritance, characterized by a mutation in the *HBB* gene, where valine replaces glutamic acid in the  $\beta$ -globin polypeptide chain. This mutation results in the variant hemoglobin named S (Hb S), which, under deoxygenated conditions, tends to polymerize inside the red blood cell conferring a sickle shape.

These individuals exhibit a chronic inflammatory and hemolytic state, with significant production of ROS, increased molecule adhesion of endothelial cells and blood cells, and reduced NO production resulting in vaso-occlusive phenomena; all of these are important events that trigger the varied subphenotypes of the disease.<sup>37</sup> The large phenotypic variability observed in SCD (including pain crises, stroke, priapism, osteonecrosis, leg ulcers, bacteremia, pulmonary hypertension, acute chest syndrome, and gallstones) demonstrates gene interactions in subphenotype development.<sup>38</sup>

Individuals with SCA and osteonecrosis of the hip or shoulder, with or without  $\alpha$ -thalassemia, showed that 10 Klotho SNPs were significantly associated with these subphenotypes.<sup>15</sup> Additionally, two SNPs have been associated with priapism<sup>17</sup> and three with leg ulcers<sup>18</sup> (Table 1). These associations may be underestimated, given that control group individuals could develop such subphenotypes in the future.

However, other studies have not succeeded in replicating these results. Ulug et al.<sup>19</sup> tested Klotho SNPs in 39 SCD patients who had femoral and humeral head avascular necrosis, evidenced by symptoms and imaging studies. The controls were 205 individuals with SCD without symptoms of this subphenotype. There was no reproduction of the association

**Figure 5 – Summary of the role of Klotho SNPs to establish SCD subphenotypes.**

found by Baldwin et al.<sup>15</sup> which may be explained by the inadequate sample size and by the absence of any radiological investigation of controls as it is not possible to ensure that the control individuals were not asymptomatic patients in early stages of avascular necrosis. Elliotte et al.<sup>16</sup> tested the association of Klotho SNPs and priapism in SCD patients, but were unsuccessful in finding the association between SNPs and subphenotypes reported by Nolan et al.<sup>17</sup> probably due to differences in the definition of priapism, the patients' ages and adjustments made in the tests.

Osteonecrosis, associated with vaso-occlusive events and increased blood viscosity, is a common clinical manifestation of SCD. Bone microcirculation is a favorable environment for sickled red blood cells, leukocytes, and platelet deposition, leading to infarction and necrosis of bone tissue.<sup>38,39</sup> So, despite the methodological differences that did not allow reproducibility of the results of Baldwin et al.<sup>15</sup> it may be that endothelial dysfunction is exacerbated in individuals with SCD and Klotho SNPs due to the loss of the protective effect against oxidative stress as well as reductions in the production of NO that affect vascular tone.

Priapism is a prolonged penile erection irrespective of sexual interest, and has a direct relation with intravascular hemolysis.<sup>38</sup> Normal erection is dependent on the activation of guanylate cyclase by NO for the synthesis of cGMP, which generates the rapid relaxation of penile smooth muscle. Erection regulation is driven by phosphodiesterase type 5, which controls the production of cGMP.<sup>40,41</sup> However, the expression of phosphodiesterase type 5 is reduced when there is NO depletion. Both hemolysis and genetic alterations in Klotho expression contribute to the reduction in NO synthesis, which affects the erection control mechanisms by phosphodiesterase type 5, thereby prolonging erection.

Similar to priapism, leg ulcers are related to the severity of hemolysis, and both NO depletion and oxidative stress appear to play a role in the development of ulcers.<sup>18,38</sup> However, the pathophysiology of this clinical event still needs to be elucidated in order to clarify whether these mechanisms cause leg ulcers when Klotho SNPs are present.

Figure 5 summarizes the role of Klotho SNPs to establish the SCD subphenotypes.

## Conclusion

The *Klotho* gene has a wide range of functions in several structures of the body, increasing phosphaturic activity and reducing  $1.25(\text{OH})_2\text{D}_3$  synthesis, regulating ion channel levels on the cell surface with anti-aging and anti-apoptotic effects, reducing oxidative stress and inducing the production of NO. SNPs in this gene have reportedly been associated with subphenotypes of SCD, however this data was not reproduced probably due to methodological differences. Given the endothelial involvement of the *Klotho* protein and knowledge about SCD pathophysiology (markedly centered around hemolysis and vaso-occlusive phenomena), it is essential to conduct further studies with the power needed to test the associations between the *Klotho* gene and SCD, in order to identify genetic markers of risk in these individuals and allow earlier and more effective therapeutic interventions.

## Conflicts of interest

The authors declare no conflicts of interest.

## Acknowledgments

This work was supported by grants from the Brazilian National Council of Research (CNPq) (311888/2013-5) (M.S.G.); the Foundation of Research and Extension of Bahia (FAPESB) (3626/2013) (M.S.G.); PPSUS/FAPESB (020/2013 EFP.00007295), (M.S.G.), and CNPq (402022/2010-6) (coordinated by F.F.C.). The sponsors of this study are public or nonprofit organizations that support science in general, and they had no role in gathering, analyzing, or interpreting the data.

## REFERENCES

- Ben-Dov IZ, Galitzer H, Lavi-Moshayoff V, Goetz R, Kuro-o M, Mohammadi M, et al. The parathyroid is a target organ for FGF23 in rats. *J Clin Invest*. 2007;117(12):4003-8.
- Hu MC, Shi M, Zhang J, Pastor J, Nakatani T, Lanske B, et al. *Klotho*: a novel phosphaturic substance acting as an autocrine enzyme in the renal proximal tubule. *FASEB J*. 2010;24(9):3438-50.
- Kuro-o M, Matsumura Y, Aizawa H, Kawaguchi H, Suga T, Utsugi T, et al. Mutation of the mouse *klotho* gene leads to a syndrome resembling ageing. *Nature*. 1997;390(6655):45-51.
- Kuro-o M. *Klotho*. *Pflugers Arch*. 2010;459(2):333-43.
- Li SA, Watanabe M, Yamada H, Nagai A, Kinuta M, Takei K. Immunohistochemical localization of *Klotho* protein in brain, kidney, and reproductive organs of mice. *Cell Struct Funct*. 2004;29(4):91-9.
- Matsumura Y, Aizawa H, Shiraki-Iida T, Nagai R, Kuro-o M, Nabeshima Y. Identification of the human *klotho* gene and its two transcripts encoding membrane and secreted *klotho* protein. *Biochem Biophys Res Commun*. 1998;242(3):626-30.
- Takeshita K, Fujimori T, Kurotaki Y, Honjo H, Tsujikawa H, Yasui K, et al. Sinoatrial node dysfunction and early unexpected death of mice with a defect of *klotho* gene expression. *Circulation*. 2004;109(14):1776-82.
- Bloch L, Sineshchekova O, Reichenbach D, Reiss K, Saftig P, Kuro-o M, et al. *Klotho* is a substrate for alpha-, beta- and gamma-secretase. *FEBS Lett*. 2009;583(19):3221-4.
- Chen CD, Podvin S, Gillespie E, Leeman SE, Abraham CR. Insulin stimulates the cleavage and release of the extracellular domain of *Klotho* by ADAM10 and ADAM17. *Proc Natl Acad Sci USA*. 2007;104(50):19796-801.
- Shiraki-Iida T, Aizawa H, Matsumura Y, Sekine S, Iida A, Anazawa H, et al. Structure of the mouse *klotho* gene and its two transcripts encoding membrane and secreted protein. *FEBS Lett*. 1998;424(1-2):6-10.
- Wang Y, Sun Z. Current understanding of *klotho*. *Ageing Res Rev*. 2009;8(1):43-51.
- Imura A, Iwano A, Tohyama O, Tsuji Y, Nozaki K, Hashimoto N, et al. Secreted *Klotho* protein in sera and CSF: implication for post-translational cleavage in release of *Klotho* protein from cell membrane. *FEBS Lett*. 2004;565(1-3):143-7.
- Liu H, Fergusson MM, Castilho RM, Liu J, Cao L, Chen J, et al. Augmented Wnt signaling in a mammalian model of accelerated aging. *Science*. 2007;317(5839):803-6.
- Nakatani T, Sarraj B, Ohnishi M, Densmore MJ, Taguchi T, Goetz R, et al. In vivo genetic evidence for *klotho*-dependent, fibroblast growth factor 23 (Fgf23)-mediated regulation of systemic phosphate homeostasis. *FASEB J*. 2009;23(2):433-41.
- Baldwin C, Nolan VG, Wyszynski DF, Ma QL, Sebastiani P, Embury SH, et al. Association of *klotho*, bone morphogenic protein 6, and annexin A2 polymorphisms with sickle cell osteonecrosis. *Blood*. 2005;106(1):372-5.
- Elliott L, Ashley-Koch AE, De Castro L, Jonassaint J, Price J, Ataga KI, et al. Genetic polymorphisms associated with priapism in sickle cell disease. *Br J Haematol*. 2007;137(3):262-7.
- Nolan VG, Baldwin C, Ma Q, Wyszynski DF, Amirault Y, Farrell JJ, et al. Association of single nucleotide polymorphisms in *klotho* with priapism in sickle cell anaemia. *Br J Haematol*. 2005;128(2):266-72.
- Nolan VG, Adewoye A, Baldwin C, Wang L, Ma Q, Wyszynski DF, et al. Sickle cell leg ulcers: associations with haemolysis and SNPs in *Klotho* TEK and genes of the TGF-beta/BMP pathway. *Br J Haematol*. 2006;133(5):570-8.
- Ulug P, Vasavda N, Awogbade M, Cunningham J, Menzel S, Thein SL. Association of sickle avascular necrosis with bone morphogenic protein 6. *Ann Hematol*. 2009;88(8):803-5.
- Kurosu H, Ogawa Y, Miyoshi M, Yamamoto M, Nandi A, Rosenblatt KP, et al. Regulation of fibroblast growth factor-23 signaling by *klotho*. *J Biol Chem*. 2006;281(10):6120-3.
- Urakawa I, Yamazaki Y, Shimada T, Iijima K, Hasegawa H, Okawa K, et al. *Klotho* converts canonical FGF receptor into a specific receptor for FGF23. *Nature*. 2006;444(7120):770-4.
- Tsujikawa H, Kurotaki Y, Fujimori T, Fukuda K, Nabeshima Y. *Klotho*, a gene related to a syndrome resembling human premature aging, functions in a negative regulatory circuit of vitamin D endocrine system. *Mol Endocrinol*. 2003;17(12):2393-403.
- Huang CL, Moe OW. *Klotho*: a novel regulator of calcium and phosphorus homeostasis. *Pflugers Arch*. 2011;462(2):185-93.
- Yoshida T, Fujimori T, Nabeshima Y. Mediation of unusually high concentrations of 1,25-dihydroxyvitamin D in homozygous *klotho* mutant mice by increased expression of renal 1alpha-hydroxylase gene. *Endocrinology*. 2002;143(2):683-9.
- Lau WL, Festing MH, Giachelli CM. Phosphate and vascular calcification: emerging role of the sodium-dependent phosphate co-transporter PiT-1. *Thromb Haemost*. 2010;104(3):464-70.
- Cha SK, Ortega B, Kurosu H, Rosenblatt KP, Kuro-o M, Huang CL. Removal of sialic acid involving *Klotho* causes cell-surface retention of TRPV5 channel via binding to galectin-1. *Proc Natl Acad Sci USA*. 2008;105(28):9805-10.

27. Chang Q, Hoefs S, van der Kemp AW, Topala CN, Bindels RJ, Hoenderop JG. The beta-glucuronidase klotho hydrolyzes and activates the TRPV5 channel. *Science*. 2005;310(5747):490-3.
28. Cha SK, Hu MC, Kurosu H, Kuro-o M, Moe O, Huang CL. Regulation of renal outer medullary potassium channel and renal K(+) excretion by Klotho. *Mol Pharmacol*. 2009;76(1):38-46.
29. Yamamoto M, Clark JD, Pastor JV, Gurnani P, Nandi A, Kurosu H, et al. Regulation of oxidative stress by the anti-aging hormone klotho. *J Biol Chem*. 2005;280(45):38029-34.
30. Nagai R, Saito Y, Ohyama Y, Aizawa H, Suga T, Nakamura T, et al. Endothelial dysfunction in the klotho mouse and downregulation of klotho gene expression in various animal models of vascular and metabolic diseases. *Cell Mol Life Sci*. 2000;57(5):738-46.
31. Saito Y, Yamagishi T, Nakamura T, Ohyama Y, Aizawa H, Suga T, et al. Klotho protein protects against endothelial dysfunction. *Biochem Biophys Res Commun*. 1998;248(2):324-9.
32. Shimada T, Takeshita Y, Murohara T, Sasaki K, Egami K, Shintani S, et al. Angiogenesis and vasculogenesis are impaired in the precocious-aging klotho mouse. *Circulation*. 2004;110(9):1148-55.
33. Yang J, Matsukawa N, Rakugi H, Imai M, Kida I, Nagai M, et al. Upregulation of cAMP is a new functional signal pathway of Klotho in endothelial cells. *Biochem Biophys Res Commun*. 2003;301(2):424-9.
34. Ikushima M, Rakugi H, Ishikawa K, Maekawa Y, Yamamoto K, Ohta J, et al. Anti-apoptotic and anti-senescence effects of Klotho on vascular endothelial cells. *Biochem Biophys Res Commun*. 2006;339(3):827-32.
35. Masuda H, Chikuda H, Suga T, Kawaguchi H, Kuro-o M. Regulation of multiple ageing-like phenotypes by inducible klotho gene expression in klotho mutant mice. *Mech Ageing Dev*. 2005;126(12):1274-83.
36. Saito Y, Nakamura T, Ohyama Y, Suzuki T, Iida A, Shiraki-Iida T, et al. In vivo klotho gene delivery protects against endothelial dysfunction in multiple risk factor syndrome. *Biochem Biophys Res Commun*. 2000;276(2):767-72.
37. Morris CR, Kato GJ, Poljakovic M, Wang X, Blackwelder WC, Sachdev V, et al. Dysregulated arginine metabolism, hemolysis-associated pulmonary hypertension, and mortality in sickle cell disease. *JAMA*. 2005;294(1):81-90.
38. Steinberg MH. Genetic etiologies for phenotypic diversity in sickle cell anemia. *ScientificWorldJournal*. 2009;9:46-67.
39. Bennett OM, Namnyak SS. Bone and joint manifestations of sickle cell anaemia. *J Bone Joint Surg Br*. 1990;72(3):494-9.
40. Champion HC, Bivalacqua TJ, Takimoto E, Kass DA, Burnett AL. Phosphodiesterase-5A dysregulation in penile erectile tissue is a mechanism of priapism. *Proc Natl Acad Sci USA*. 2005;102(5):1661-6.
41. Nolan VG, Wyszynski DF, Farrer LA, Steinberg MH. Hemolysis-associated priapism in sickle cell disease. *Blood*. 2005;106(9):3264-7.