

Balance, gait, functionality and strength: comparison between elderly fallers and non-fallers

Elaine C. Cebolla, André L. F. Rodacki, Paulo C. B. Bento

ABSTRACT | Background: Accidental falls are a major health problem related to aging and affect one in every three elderly individuals over the age of sixty. **Objective:** To evaluate and compare the muscle strength, gait kinematics parameters, and performance in functional tests between elderly subjects with and without a prior history of falls. In addition, the association between the history of falls and the variables that demonstrated differences between groups were tested. **Method:** 62 elderly subjects participated in the study and were allocated to the group with falls history (FG; $n=20$; 68.0 ± 6.9 years old) or the group without falls history (CG; $n=42$; 65.5 ± 4.1 years old). Maximal strength, gait kinematics parameters, and functional tests were tested. **Results:** The FG showed lower muscle strength in the knee flexors (51.45 ± 8.6 vs. 62.09 ± 19 Kg), lower average toe clearance during the swing phase (0.04 ± 0.006 vs. 0.043 ± 0.005 m), and lower performance in the “8-foot up-and-go” test (5.3 ± 0.7 vs. 5.8 ± 0.7 s) ($p<0.05$). There were no associations between any variables and falls, but the increased time in the “8-foot up-and-go” test may double the likelihood of a fall occurring. **Conclusion:** Fallers have reduced lower limb strength, gait alterations, the worst performance in the dynamic balance test, and an increased risk of falls.

Keywords: falls; aging; gait; functionality; muscular strength; movement.

HOW TO CITE THIS ARTICLE

Cebolla EC, Rodacki ALF, Bento PCB. Balance, gait, functionality and strength: comparison between elderly fallers and non-fallers. *Braz J Phys Ther.* 2015 Mar-Apr; 19(2):146-151. <http://dx.doi.org/10.1590/bjpt-rbf.2014.0085>

● Introduction

Accidental falls are a major health problem and affect one in every three elderly individuals over the age of 60. The rate of occurrence of falls increases with age and may affect 45% of the elderly population over the age of 75¹. The consequences are functionality reduction, loss of independence and, in some cases, may result in death. Moreover, falls lead to increased healthcare costs and social problems^{2,3}.

The occurrence of falls depends on extrinsic factors (related to the environment) and intrinsic factors (related to the subject). Strength and power reduction, postural control and gait parameter alterations, as well as visual, functional, and cognitive deficits¹⁻⁵ have been listed as the main intrinsic factors.

Elderly subjects sustaining one fall⁶ during the last year showed a greater center of pressure displacement in the medial lateral direction than non-fallers⁷. The drop in muscle strength due to aging is closely related to falls during locomotion^{8,9}. In addition, a lower rate of torque development in the knee flexor muscles has been reported among fallers¹⁰, which indicates that muscle force-generating properties

are relevant. Indeed, the peak hip, knee, and ankle torques reported for a single-step balance recovery from a lean angle of 10 degrees were approximately 150, 75 and 50 Nm, respectively, while peak torques required for the successful recovery after a trip range from 50 to 200 Nm¹¹. These peak forces and torques may be difficult for some older adults to achieve¹². A worse performance in the functional tests has been also reported¹³. However, studies that evaluated muscle strength, gait, and functionality did not assess the contribution of all these variables to fall occurrence in the same investigation. Differences in these parameters between samples may lead to discrepant results when considered together as they may influence each other.

The purpose of this study was to determine and compare the dynamic strength of lower limb, kinematic gait parameters, and functional test performance among elderly subjects with and without fall history. Furthermore, the association between fall history and the variables that showed significant differences between fallers and non-fallers was tested.

● Method

Sample

A power analysis was calculated retrospectively and showed that, with 20 subjects in the fall group and 42 subjects in the control group for the 8-foot up-and-go test and considering an alpha level of 0.05, the power was 65% and the effect size was 0.5. Although most studies have been conducted with a similar sample size, it may be viewed as a limitation of the present study. We chose the 8-foot up-and-go test to calculate the sample size based on previous studies that revealed the sensibility of this test to discriminate elderly fallers¹⁴. The power analysis was calculated using the software Statistica (Statsoft, version 7.0).

Sixty-two elderly subjects (13 men and 49 women) recruited from local community volunteered to participate in the study. The inclusion criteria were: aged 60 years old or above, able to perform the activities of daily living and to walk independently, free from recent orthopedic problems such as surgery, fractures or other health problems that would prevent them from performing the physical tests. All procedures were approved by the Ethics Committee of Universidade Federal do Paraná (UFPR), Curitiba, PR, Brazil, under number 0835.0.000.091-10, and all subjects signed a consent form before participating, according to National Health Council Resolution 196/96.

The subjects attended six laboratory sessions to perform all evaluations. Initially, all subjects underwent a clinical examination and answered a customized questionnaire before performing the physical tests. The questionnaire was designed to identify whether the subjects had experienced a fall during the last 12 months. A fall was defined as unintentionally coming to rest on the ground, floor or other lower level, whether or not it produced an injury¹⁵. According to the questionnaire outcomes, subjects were allocated into one of two groups: fallers (FG; n=20) and non-fallers (CG; n=42).

Dynamic strength measurements

After two familiarization sessions, one maximal repetition test (1RM) was performed to assess the dynamic strength of the lower limbs. The exercises were performed on three different exercise machines: leg-press, knee extensor, and flexor (Nakagym®, Brazil). Tests were executed in a random order and included concomitant movements of both lower segments. These exercises are chosen based on the relevance of the respective muscle groups during the

performance of daily life activities such as climbing stairs and standing up from a chair¹⁶.

After a 10 min warm-up period on the treadmill at 5 Km/h, participants performed five trials to determine the maximal load. Verbal encouragement was provided during the tests and a 2 to 5 min resting period was imposed between trials.

Gait evaluation

The kinematics analysis was conducted to determine the spatial and temporal gait parameters related to falls¹⁷. Gait assessment was performed on a level surface in the laboratory's data collection area. A motion capturing system (Vicon Peak, Oxford, UK), consisting of six MX13 infrared cameras sampling at 100 Hz, identified the position with a set of markers placed over the skin and clothes (Lycra shorts). The coordinates of these markers were filtered (quantic spline) and used to reconstruct the movement in 3D by applying the biomechanical model (Figure 1). The subjects were instructed to perform ten trials, walking at volitional speed along an 8 m long and 2 m wide walkway. An intermediate gait cycle record was selected for analysis purposes. The calibration was performed according to manufacturer recommendations and yielded a volume of 3.0 m long, 1.5 m wide, and 1.7 m height. Three valid cycles were selected for digitizing purposes and a gait cycle was defined as two consecutive heel strikes. The gait cycle was time-normalized (0–100%) and the ensemble average of three valid trials was calculated. The variables analyzed were: mean speed ($\text{m}\cdot\text{s}^{-1}$), i.e. the product of stride length and cadence; stride time (s) - time from initial to final foot strike of the right foot; stride length (m) - the distance between initial and final foot strike of the right foot; cadence ($\text{stride}\cdot\text{s}^{-1}$) - number of strides per minute; speed of heel contact ($\text{m}\cdot\text{s}^{-1}$) - the vertical velocity of the heel marker in the vertical direction during the contact instant; and toe clearance - the smallest distance between the base of the 5th metatarsal phalange and the ground during the mid-swing phase.

Functional testing

The participants attended one session to perform a series of functional tests that included the 6-min walk (6MW) test, the sit-and-reach test, the 8-foot-up-and-go test, and the 30-s chair-stand test¹⁸.

The test sequence was performed in the following order: 1st day - fall questionnaire; 2nd and 3rd days - strength test familiarization (1RM) and functional tests; 4th and 5th days - strength test (1 RM - 2 exercises in the 4th day and 1 on the 5th day); 6th day - gait evaluation.

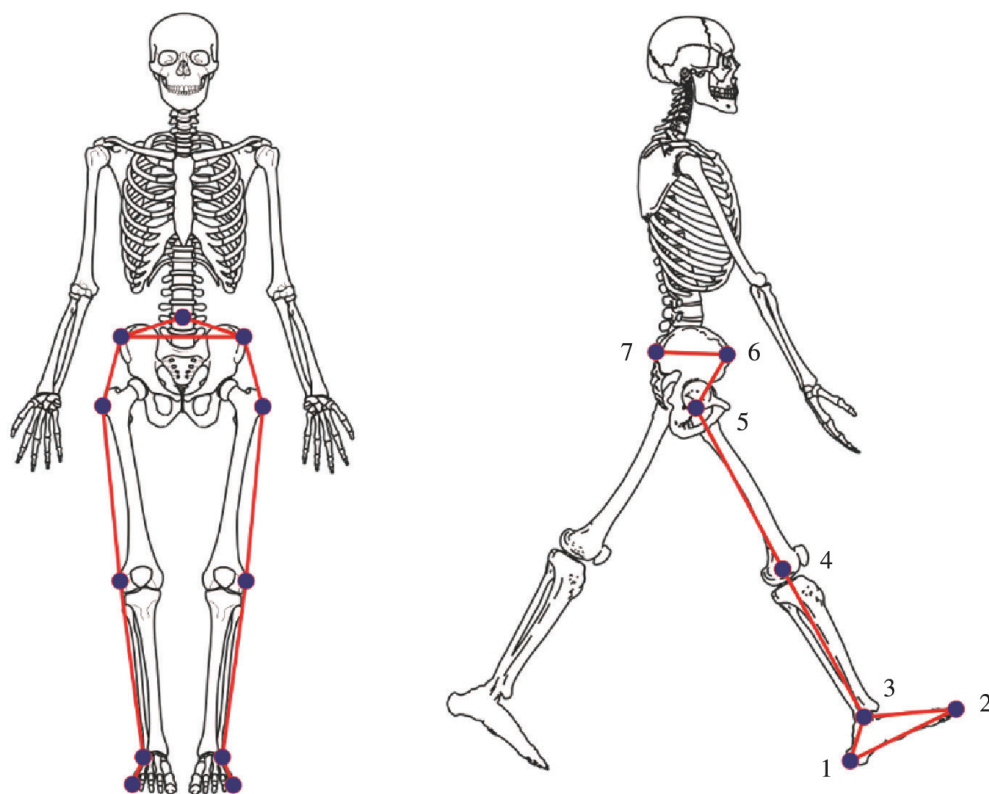


Figure 1. Biomechanical model to gait analysis. 1 - Calcaneus; 2 - Base of the 5th metatarsal; 3 - Malleolus side; 4 - Epicondyle of the femur; 5 - Greater trochanter; 6 - Anterior superior iliac spine; 7- 5th Lumbar vertebra.

Statistics

Data normality and group homogeneity were confirmed using the Kolmogorov–Smirnov and Levene tests, respectively, and the groups were compared using an independent “t” test. The data that did not present normal distribution were tested using non-parametric tests (the Mann–Whitney U test). A multivariate logistic linear regression was used to verify the association between falls and all variables that presented statistical differences between fallers and non-fallers. Variables highly correlated were determined and only one was included as input in the regression analysis. All statistical analyses were performed using Statistical Software (StatSoft, version 7, USA), and the level of significance was set at $p < 0.05$.

Results

No differences were found in age and physical characteristics between the CG and FG (Table 1).

The FG showed lower dynamic strength in the knee flexor muscle than the CG ($p < 0.01$). No differences

were found between groups for knee extensor ($p = 0.06$) and leg-press exercise ($p = 0.30$) (Table 2).

The spatial and temporal gait parameters are shown in Table 3. The FG showed lower minimum toe clearance during the gait swing phase than the CG ($p = 0.04$), and no further differences were found in other kinematic variables.

The FG had a worse performance in the 8-foot up-and-go test when compared to the CG ($p = 0.02$). There were no differences between groups for the 30-s chair-stand, sit-and-reach, and 6MW tests ($p > 0.05$) (Table 4).

The logistic regression analysis was performed to assess whether knee strength flexors, minimum toe clearance or performance in the 8-foot up-and-go test were associated with falls. The results showed no association between knee flexor strength and falls (β , -0.02 , $p = 0.20$, odds ratio 0.97, CI 0.93-1.02) or between minimum toe clearance and falls (β , -88.5 , $p = 0.09$, odds ratio 0.00, CI 0.00–infinity). Falls and the time to perform the 8-foot up-and-go test presented a non-significant, but borderline trend between groups (β , 0.83 , $p = 0.06$, odds ratio 2.30, CI 0.95-5.59).

Table 1. Physical characteristics of the participants (mean \pm standard deviation).

Variable	CG (42)	FG (20)	P
Age (y)	65.5 \pm 4.10	68.0 \pm 6.90	0.18
Body mass (Kg)	75.1 \pm 14.30	77.1 \pm 11.70	0.58
Height (cm)	160.1 \pm 9.40	155.9 \pm 4.60	0.20

CG: control (non-fallers); FG: fallers; (p>0.05).

Table 2. Dynamic strength of the lower limb (mean \pm standard deviation).

	Exercises	CG	FG	P	ES
1 RM	Knee extensor	65.64 \pm 19.77	58.15 \pm 11.28	0.06	0.42
	Knee flexor	62.09 \pm 19.33	51.45 \pm 8.65	<0.01*	0.63
	Leg-press	67.15 \pm 17.31	64.3 \pm 8.71	0.30	0.20

ES: effect size; 1 RM: one-repetition maximal; *(p<0.05).

Table 3. Spatial and temporal gait parameters (mean \pm standard deviation).

Variables	CG	FG	P	ES
Stride length (m)	1.17 \pm 0.17	1.11 \pm 0.12	0.1	0.38
Stride time (s)	1.08 \pm 0.09	1.07 \pm 0.08	0.7	0.11
Cadence (strides/s)	0.93 \pm 0.08	0.93 \pm 0.06	0.8	0
Gait speed (m/s)	1.08 \pm 0.18	1.04 \pm 0.16	0.3	0.23
Toe clearance(m)	0.043 \pm 0.001	0.040 \pm 0.001	0.04*	0.003
Heel contact (m/s)	0.76 \pm 0.36	0.70 \pm 0.31	0.4	0.17

ES: effect size; *(p>0.05).

Table 4. Functional tests (mean \pm standard deviation) of the faller (FG) and non-faller group (CG).

Variables	CG	FG	P	ES
30-s chair-stand (rep)	13.14 \pm 2.48	12.35 \pm 2.34	0.2	-0.32
Sit-and-reach (cm)	-3.39 \pm 12.22	-2.28 \pm 9.33	0.7	0.09
8-foot up-and-go (s)	5.37 \pm 0.75	5.84 \pm 0.73	0.02*	0.63
Six minute walk (m)	571.53 \pm 67.51	542.93 \pm 66.69	0.1	-0.42

ES: effect size; *(p>0.05).

● Discussion

The similar anthropometric characteristics between groups allowed comparisons without confounding factors. Lower limb strength has been associated with an increased risk of falls among the elderly^{1,10,19}. Some studies have reported that fallers showed only 37% of knee extensor strength when compared to age-matched normative values²⁰. In the present study, the dynamic strength of knee extensor muscles did not differ between groups (p=0.06). The lower strength observed around the knee flexor muscles in the FG is in agreement with other studies that applied dynamic maximal strength¹⁹ and peak isometric torque tests¹⁰.

Reduced capacity to produce strength in the lower limbs is an important fall predictor among older adults because the capacity to recover balance depends on the magnitude and rate of joint torques that are produced. Furthermore, the moderate effect size observed for the group differences in the present study reinforces the relevance of the results.

The elderly subjects with fall history demonstrated lower minimum toe clearance during the swing phase. Reduced minimum toe clearance is an age-related gait alteration²¹ and may expose the elderly to a trip and consequently to increased risk of falling²². Although statistical differences were observed in the present study, the effect size magnitude was very small.

The lack of differences between groups in stride length and frequency may be explained by the low gait speed presented in this study. In fact, differences between fallers and non-fallers for stride length and frequency have been observed only at high gait velocities²³. At high velocities, some adjustments in the gait cycle are required, resulting in reduced double support time and a greater gait instability, which may increase risk for falls²⁴.

The increased time by fallers to perform the 8-foot up-and-go test may indicate dynamic balance and mobility problems. In addition, an increased time to perform the 8-foot up-and-go test was associated with greater chances of falling. Our results are in agreement with others that have demonstrated an association between poor performance in these tests and increased risk of falls^{14,25}. The other functional tests did not demonstrate enough specificity to discriminate fallers and non-fallers (30-s chair-to-stand, sit-and-reach, and 6MW tests).

Although the knee extensor strength and the minimum toe clearance have been smaller in fallers than in non-fallers, these isolated parameters are not related to falls. The maintenance of balance does not depend only on the neuromuscular system, but on the integrity and interaction of several systems involved in postural control (e.g., visual and vestibular systems)²⁶. Thus, the 8-foot up-and-go test requires several components such as strength to stand and sit and agility to displace and change direction and seems to reproduce better the complexity of real world conditions, where the risk of falls is greater.

A possible limitation of the present study was the classification of fallers as those who had fallen in the last 12 months, which can result in memory bias. However, the rate of fall occurrence was approximately 30% and is in agreement with the literature¹. In addition, the loss of proprioception that occurs with aging was not assessed and may have influenced the data²⁷.

● Conclusion

The present study confirmed previous findings that lower limb strength, especially knee flexor strength, is lower in the groups that experienced at least one episode of falling during the last 12 months. The lack of association between strength and falls may indicate that other aspects, such as balance and agility to recover balance and avoid a fall, may be involved.

The elderly subjects showed less minimum toe clearance, which can result in a trip and subsequent

accidental fall. The data suggests that the 8-foot up-and-go test may be appropriate to identify elderly individuals with an increased risk of falling. In addition, those with a poorer performance in this test have more chances of falling. Experimental studies are required to determine other factors that could be potentially related to falls, such as strength, balance, and functionality, and that could to provide a protective effect and reduce the risk of falling.

● References

1. Rubenstein LZ. Falls in older people: epidemiology, risk factors and strategies for prevention. *Age Ageing*. 2006;35(Suppl 2):ii37-41. <http://dx.doi.org/10.1093/ageing/af1084>. PMID:16926202
2. Gazzola JM, Perracini MR, Ganança MM, Ganança FF. Functional balance associated factors in the elderly with chronic vestibular disorder. *Braz J Otorhinolaryngol*. 2006;72(5):683-90. Available from: <http://www.ncbi.nlm.nih.gov/pubmed/17221062>.
3. Masud T, Morris RO. Epidemiology of falls. *Age Ageing*. 2001;30(Suppl 4):3-7. http://dx.doi.org/10.1093/ageing/30.suppl_4.3. PMID:11769786
4. American Geriatrics Society, British Geriatrics Society, American Academy of Orthopaedic Surgeons Panel on Falls Prevention. Guideline for the prevention of falls in older persons. *J Am Geriatr Soc*. 2001;49(5):664-72. <http://dx.doi.org/10.1046/j.1532-5415.2001.49115.x>. PMID:11380764
5. Hill K, Schwarz J. Assessment and management of falls in older people. *Intern Med J*. 2004;34(9-10):557-64. <http://dx.doi.org/10.1111/j.1445-5994.2004.00668.x>. PMID:15482269
6. Frontera WR, Reid KF, Phillips EM, Krivickas LS, Hughes VA, Roubenoff R, et al. Muscle fiber size and function in elderly humans: a longitudinal study. *J Appl Physiol*. 2008;105(2):637-42. <http://dx.doi.org/10.1152/jappphysiol.90332.2008>. PMID:18556434
7. Melzer I, Benjuya N, Kaplanski J. Postural stability in the elderly: a comparison between fallers and non-fallers. *Age Ageing*. 2004;33(6):602-7. <http://dx.doi.org/10.1093/ageing/afh218>. PMID:15501837
8. Kerrigan DC, Lee LW, Collins JJ, Riley PO, Lipsitz LA. Reduced hip extension during walking: healthy elderly and fallers versus young adults. *Arch Phys Med Rehabil*. 2001;82(1):26-30. <http://dx.doi.org/10.1053/apmr.2001.18584>. PMID:11239282
9. Kwon IS, Oldaker S, Schrager M, Talbot LA, Fozard JL, Metter EJ. Relationship between muscle strength and the time taken to complete a standardized walk-turn-walk test. *J Gerontol A Biol Sci Med Sci*. 2001;56(9):B398-404. <http://dx.doi.org/10.1093/gerona/56.9.B398>. PMID:11524441
10. Bento PCB, Pereira G, Ugrinowitsch C, Rodacki ALF. Peak torque and rate of torque development in elderly with and without fall history. *Clin Biomech*. 2010;25(5):450-4. <http://dx.doi.org/10.1016/j.clinbiomech.2010.02.002>. PMID:20350773
11. Pijnappels M, Bobbert MF, Van Dieën JH. How early reactions in the support limb contribute to balance recovery

- after tripping. *J Biomech.* 2005;38(3):627-34. <http://dx.doi.org/10.1016/j.jbiomech.2004.03.029>. PMID:15652564
12. Sturnieks DL, St George R, Lord SR. Balance disorders in the elderly. *Neurophysiol Clin.* 2008;38(6):467-78. <http://dx.doi.org/10.1016/j.neucli.2008.09.001>. PMID:19026966
 13. Gai J, Gomes L, Nóbrega O, Rodrigues M. Fatores associados a quedas em mulheres idosas residentes na comunidade. *Rev Assoc Med Bras.* 2010;56(3):327-32. <http://dx.doi.org/10.1590/S0104-42302010000300019>. PMID:20676542
 14. Bardin MG, Dourado VZ. Association between the occurrence of falls and the performance on the Incremental Shuttle Walk Test in elderly women. *Rev Bras Fisioter.* 2012;16(4):275-80. <http://dx.doi.org/10.1590/S1413-35552012005000033>. PMID: 22801451.
 15. Buchner DM, Cress ME, Lateur BJ, Esselman PC, Margherita AJ, Price R, et al. The effect of strength and endurance training on gait, balance, fall risk, and health services use in community-living older adults. *J Gerontol A Biol Sci Med Sci.* 1997;52(4):M218-24. <http://dx.doi.org/10.1093/gerona/52A.4.M218>. PMID:9224433
 16. Hortobágyi T, Mizelle C, Beam S, DeVita P. Old adults perform activities of daily living near their maximal capabilities. *J Gerontol A Biol Sci Med Sci.* 2003;58(5):M453-60. <http://dx.doi.org/10.1093/gerona/58.5.M453>. PMID:12730256
 17. Persch LN, Ugrinowitsch C, Pereira G, Rodacki ALF. Strength training improves fall-related gait kinematics in the elderly: a randomized controlled trial. *Clin Biomech.* 2009;24(10):819-25. <http://dx.doi.org/10.1016/j.clinbiomech.2009.07.012>. PMID:19716637
 18. Rikli R, Jones J. Development and validation of a functional fitness test for community-residing older adults. *J Aging Phys Act.* 1999;7(1):129-61.
 19. Yau DTY, Chung RCK, Pang MYC. Knee muscle strength and visual acuity are the most important modifiable predictors of falls in patients after hip fracture surgery: a prospective study. *Calcif Tissue Int.* 2013;92(3):287-95. <http://dx.doi.org/10.1007/s00223-012-9681-7>. PMID:23239261
 20. Whipple RH, Wolfson LI, Amerman PM. The relationship of knee and ankle weakness to falls in nursing home residents: an isokinetic study. *J Am Geriatr Soc.* 1987;35(1):13-20. PMID:3794141.
 21. Van Dieën JH, Pijnappels M, Bobbert MF. Age-related intrinsic limitations in preventing a trip and regaining balance after a trip. *Saf Sci.* 2005;43(7):437-53. <http://dx.doi.org/10.1016/j.ssci.2005.08.008>.
 22. Pijnappels M, Reeves ND, Maganaris CN, Van Dieën JH. Tripping without falling; lower limb strength, a limitation for balance recovery and a target for training in the elderly. *J Electromyogr Kinesiol.* 2008;18(2):188-96. <http://dx.doi.org/10.1016/j.jelekin.2007.06.004>. PMID:17761436
 23. Barak Y, Wagenaar RC, Holt KG. Gait characteristics of elderly people with a history of falls: a dynamic approach. *Phys Ther.* 2006;86(11):1501-10. <http://dx.doi.org/10.2522/ptj.20050387>. PMID:17079750
 24. Mbourou GA, Lajoie Y, Teasdale N. Step length variability at gait initiation in elderly fallers and non-fallers, and young adults. *Gerontology.* 2003;49(1):21-6. <http://dx.doi.org/10.1159/000066506>. PMID:12457046
 25. Thrane G, Joakimsen RM, Thornquist E. The association between timed up and go test and history of falls: the Tromsø study. *BMC Geriatr.* 2007;7(1):1. <http://dx.doi.org/10.1186/1471-2318-7-1>. PMID:17222340
 26. Horak FB, Macpherson JM. Postural orientation and equilibrium. In: Rowell LB, Shepherd JT. *Handbook of physiology: a critical, comprehensive presentation of physiological knowledge and concepts.* New York: Oxford American Physiological Society; 1996. p. 255-92.
 27. Adamo DE, Alexander NB, Brown SH. The influence of age and physical activity on upper limb proprioceptive ability. *J Aging Phys Act.* 2009;17(3):272-93. PMID:19799100

Correspondence

Paulo Cesar Barauce Bento

Avenida República Argentina, 5535, Ap. 71, Novo Mundo
CEP 81050-001, Curitiba, PR, Brasil
email: p.bento@yahoo.com.br