

Effect of remote ischemic postconditioning in inflammatory changes of the lung parenchyma of rats submitted to ischemia and reperfusion

Efeito do pós-condicionamento isquêmico remoto nas alterações inflamatórias do parênquima pulmonar de ratos submetidos à isquemia e reperfusão

Rafael Cantero Dorsa¹, MD, MSc; José Carlos Dorsa Vieira Pontes², MD, PhD; Andréia Conceição Brochado Antonioli¹, MD, PhD; Guilherme Viotto Rodrigues da Silva¹, MD; Ricardo Adala Benfatti³, MD, PhD; Carlos Henrique Marques dos Santos¹, MD, PhD; Elenir Rose Cury Pontes¹, MD, PhD; José Anderson Souza Goldiano⁴, MD

DOI 10.5935/1678-9741.20150005

RBCCV 44205-1651

Abstract

Objective: To assess the effects of postconditioning remote in ischemia-reperfusion injury in rat lungs.

Methods: Wistar rats (n=24) divided into 3 groups: GA (I/R) n=8, GB (R-Po) n=8, CG (control) n=8, underwent ischemia for 30 minutes artery occlusion abdominal aorta, followed by reperfusion for 60 minutes. Resected lungs and performed histological analysis and classification of morphological findings in accordance with the degree of tissue injury. Statistical analysis of the mean rating of the degree of tissue injury.

Results: GA (3.6), GB (1.3) and CG (1.0). (GA GB X P<0.05).

Conclusion: The remote postconditioning was able to minimize the inflammatory lesion of the lung parenchyma of rats undergoing ischemia and reperfusion process.

Descriptors: Ischemia. Reperfusion. Ischemic Postconditioning. Lung Injury.

Resumo

Objetivo: Avaliar os efeitos do pós-condicionamento remoto no fenômeno de isquemia e reperfusão nos pulmões de ratos.

Métodos: Ratos Wistar (n=24) divididos em 3 grupos: GA (I/R) n=8, GB pós-condicionamento remoto n=8, GC (controle) n=8, submetidos à isquemia de 30 minutos por oclusão da artéria aorta abdominal, seguida de reperfusão de 60 minutos. Ressecados os pulmões e realizada a análise histológica e classificação dos achados morfológicos de acordo com o grau de lesão tecidual. Análise estatística das médias da classificação do grau de lesão tecidual.

Resultados: GA (3,6); GB (1,3) e GC (1,0). (GA X GB P<0,05).

Conclusão: O pós-condicionamento remoto foi capaz de minimizar a lesão inflamatória do parênquima pulmonar de ratos submetidos ao processo de isquemia e reperfusão.

Descritores: Isquemia. Reperfusão. Pós-Condicionamento Isquêmico. Lesão Pulmonar.

¹Federal University of Mato Grosso do Sul (UFMS), Campo Grande, MS, Brazil.

²General Director of the Nucleus of the University Hospital of the Federal University of Mato Grosso do Sul (UFMS), Campo Grande, MS, Brazil.

³Assistant Professor in Cardiovascular Surgery at the Federal University of Mato Grosso do Sul (UFMS), Campo Grande, MS, Brazil.

⁴Specialist in Cardiopulmonary Bypass of the Federal University of Mato Grosso do Sul (UFMS), Campo Grande, MS, Brazil.

This study was carried out at Federal University of Mato Grosso do Sul (UFMS), MS, Brazil.

No financial support.

Correspondence address:

Jose Carlos Dorsa Vieira Pontes
Hospital Universitário da Universidade Federal de Mato Grosso do Sul
Serviço de Cirurgia Cardiovascular
Av. Senador Filinto Muller, S/N Jardim Ipiranga - Campo Grande, MS, Brazil
Zip code: 79090-900
E-mail: carlosdorsa@uol.com.br

Article received on April 28th, 2013
Article accepted on January 26th, 2015

Abbreviations, acronyms & symbols

AMP	Adenosine monophosphate
ATP	Adenosine triphosphate
COBEA	Brazilian College of Animal Experimentation
IPoC	Ischemic postconditioning
IPreC	Ischemic preconditioning
R-PosC	Remote postconditioning
TROS	Toxic reactive oxygen species

INTRODUCTION

Ischemia is a condition of interruption of the supply of oxygen and nutrients for a given area during a period, due to deficiency of arterial blood supply, and is known to be cause of dysfunction and subsequent death of tissues in many clinical situations, e.g., in acute myocardial infarction, pulmonary infarction, mesenteric infarction, ischemic stroke and limb ischemia^[1].

Reperfusion of ischemic organ is essential to its viability and functional recovery. However, the arrival of the blood will cause a number of lesions that were called ischemia-reperfusion injury, this term refers to a variety of changes at the time of restoration of blood flow and the impairment of function until the cell death^[2].

In addition to the lesions which occur in the tissues which pass through the ischemia and reperfusion process, it is known that distant organs also suffer damage caused by this process^[1].

A classic example is the ischemic preconditioning (IPreC), which initially proved to be effective in treating the target organ of the ischemic process, and later studies have also shown its protective effect at a distance, the called remote ischemic preconditioning^[3].

In the last decade, there have been studies demonstrating the efficacy of ischemic post-conditioning in various organs when subjected to ischemia and reperfusion^[4]. Clearly, then came the questions about its protective effect also at a distance, the remote ischemic postconditioning (R-IPo).

In 2005, Kerendi et al.^[5] were the first to introduce the R-IPo strategy, which consisted of brief period of ischemia and reperfusion, which reduced the size of the infarcted area in the heart of rats.

Despite this and other studies^[6,7] that assessed the effect of R-IPoC, the literature is still scarce on this topic, especially on the effect in the lung parenchyma, which is considered of great interest, given the importance of the integrity of lungs in patients who undergo ischemia and reperfusion processes for their establishment.

The aim of this study is to assess the ability of R-IPo to minimize injury in the process of ischemia and reperfusion in the lungs of rats subjected to ischemia and systemic reperfusion.

METHODS

This study was approved by the Research Ethics Committee of the Federal University of Mato Grosso do Sul under No. 296 ratified by the Ethics Committee on the use of animals/CEUA/UFMS on September 12, 2011.

24 Wistar adult male rats (*Rattus norvegicus albinos*, Rodentia, Mammalia) were used, weighing between 250-350 grams, with an average of 310 grams, raised in the conventional-controlled vivarium of Mato Grosso do Sul Federal University. The animals were kept in controlled conditions of light (light cycle from 7 am to 19 pm), temperature (22°C-24°C) and receiving standardized ration and water *ad libitum*, attending to the observations advocated by the Brazilian College of Animal Experimentation (COBEA).

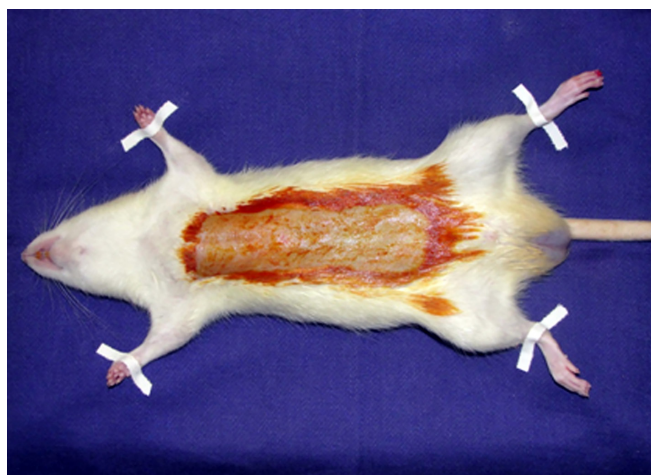


Fig. 1 - Rat positioned on the operating table with four limbs abducted and antisepsis with iodine performed.

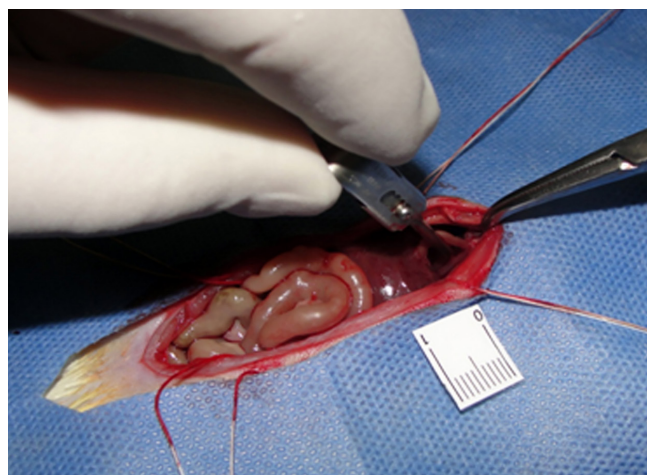


Fig. 2 - Clamp in the abdominal aorta.

The animals were divided into three groups:

Group A - Ischemia and reperfusion (I/R): Eight rats subjected to ischemia for 30 minutes by occlusion of the abdominal aorta just below the diaphragm, with vascular clamp (Clamp Bulldog De Bakey, gentle, curve, 5cm, EDLO®) followed by reperfusion for 60 minutes for removal of the clamp.

Group B - Remote ischemic postconditioning (R-IPo): Eight rats subjected to ischemia and reperfusion procedure as described above. Among ischemia and reperfusion, there was R-IPo reperfusion for three cycles (two minutes each) interleaved with three cycles of ischemia (two minutes each), respectively, by removal and repositioning of the clamp. Group C - Control: Eight rats subjected to aortic dissection and handling in a manner similar to the groups A and B, but without applying vascular clamp.

The animals were weighed on an electronic precision balance (Callmex® - model Q510) and anesthetized with an intramuscular injection in the right posterior limb, of solution of 2:1 of Ketamine hydrochloride (Cetamin®), 50 mg/ml, and Xylazine hydrochloride (Xilazin®), 20 mg/ml, respectively, at a dose of 8 mg/100 g associated with 1 mg/100 g.

After verified the anesthesia, the rats underwent abdominal trichotomy, positioned at the operating table with four abducted limbs and performed topical antisepsis (Figure 1). After placement of surgical fields, the rats underwent median laparotomy of four centimeters, dissection and identification of the abdominal aorta.

In group A, the abdominal aortic artery was occluded with atraumatic vascular clamp which remained for thirty minutes (ischemic phase) (Figure 2). In all three groups the wound was covered with gauze moistened with saline solution at 0.9%. After the stage of ischemia, vascular clamp was removed, beginning the reperfusion phase, lasting 60 minutes. In all three groups, the surgical wound was closed during the reperfusion sutured by simple running suture using 3-0 mononylon.

In group B, ischemia phase (30 minutes) and reperfusion were performed (60 minutes). When preceding the reperfusion the PosC was performed through three cycles of reperfusion (removal of atraumatic vascular clamp from the abdominal aortic artery) lasting two minutes each, interspersed with three

cycles of ischemia (occlusion of the abdominal aorta artery by atraumatic vascular clamp), also lasting two minutes each.

In group C, the position at the table of the rats, laparotomy of four centimeters, dissection and identification of the artery abdominal aorta were performed. The atraumatic vascular clamp was positioned for a few seconds in the artery but not applied.

Immediately at the end of the reperfusion phase in groups A and B, the abdominal wall was opened again by removing the suture and the lungs were excised (Figure 3), washed with saline 0.9% solution and placed in 10% formaldehyde for later histological analysis.

In all three groups, the animals were euthanized by overdose of those same anesthetic intramuscularly into the right hind limb (100 mg/kg).

For histological analysis of the lungs we used the hematoxylin-eosin and the reading of the slides was performed by the same pathologist, who was blinded to the study, which considered for description of morphological findings, the classification according to the degree of tissue injury described by Greca et al.^[8] (Table 1 and Figure 4). We selected three random locations on each lung for analysis: apex, middle third and base, being observed five fields of each slides, resulting in the predominant lesion.

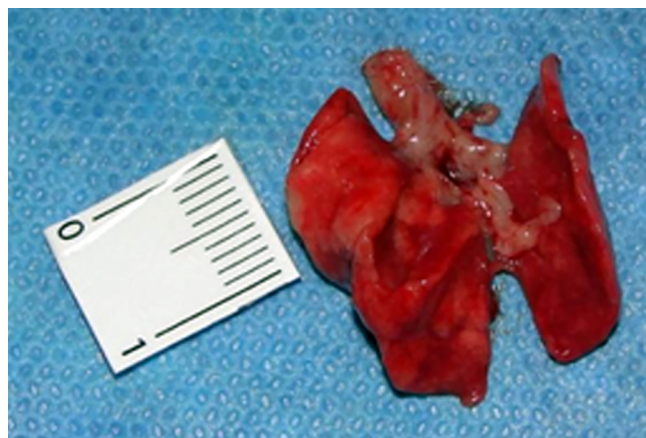


Fig. 3 - Dried lungs.

Table 1. Classification described by Greca et al.^[8].

Grade 1 Normal	Grade 2 Mild	Grade 3 Moderate	Grade 4 Severe
Normal parenchyma on optical microscopy	Focal edema in few alveolar septa, mild congestion, neutrophils in alveolar septa less than 50 per high-power field	Moderate edema in the alveolar septa or mild edema in several septa, moderate congestion, neutrophils in alveolar septa between 50 and 100 per high-power field	Severe edema in the alveolar septa or mild edema in several septa, moderate congestion, neutrophils in alveolar septa more than 100 per high-power field

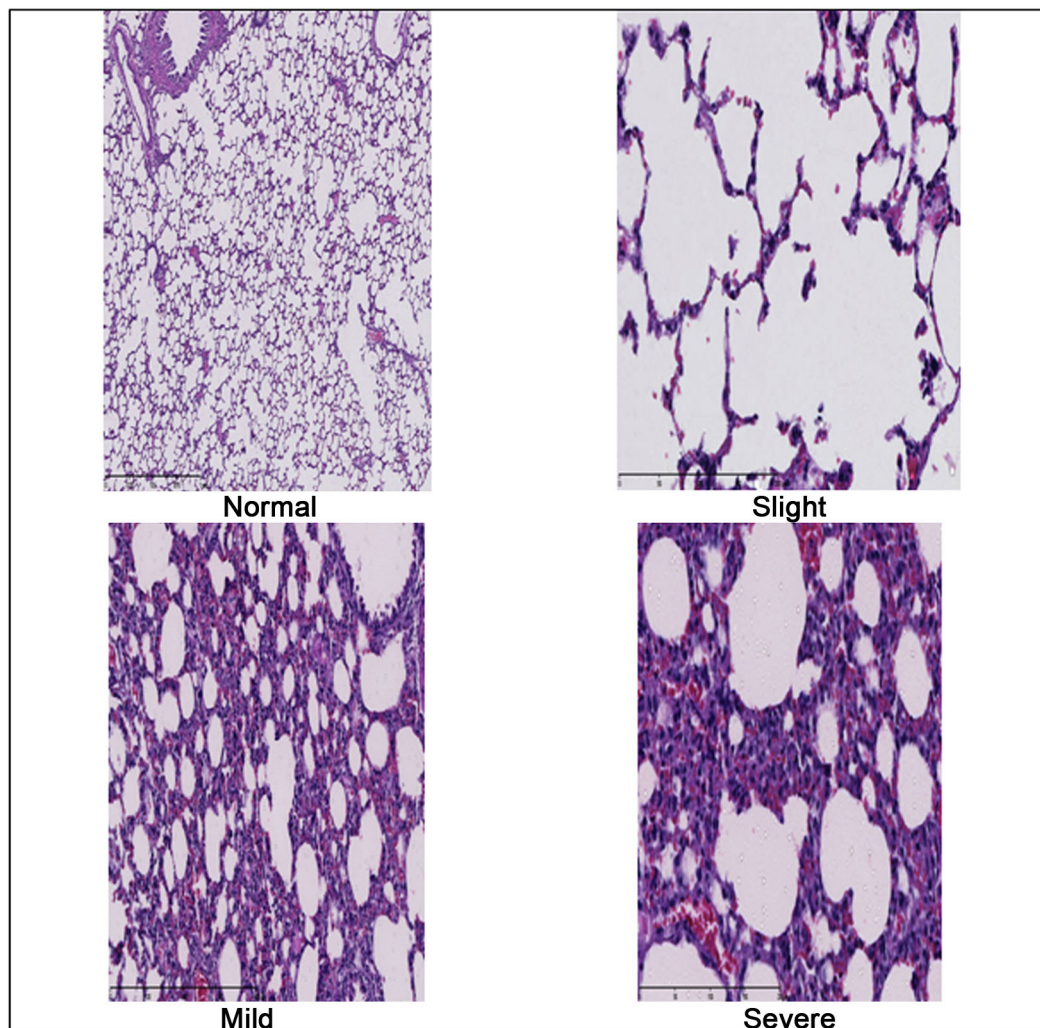


Fig. 4 - Photograph of histological changes of the lung parenchyma at regular, mild, moderate and intense degrees according Greca et al.^[8] classification. (40X optical microscopy - hematoxylin-eosin staining).

The values obtained during the study were compared using the Kruskal Wallis test followed by Student-Newman-Keuls. The significance level was 5%. We used the statistical software BioStat version 5.0.

RESULTS

The search program was accomplished using 24 rats. The results of the histological analysis are shown in Table 2.

After histological examination of the degree of inflammation of the lung parenchyma, it was observed that the group C (control)

had grade 1 rating according Greca et al.^[8] in the eight mice. In Group A (ischemia and reperfusion - I/R) were observed three rats with classification grade 3 and 5 rats with classification grade 4.

In group B (remote ischemic post-conditioning - R-IP-oSC) were observed six rats with classification grade 1 and two rats with classification grade 2.

The mean degree of histological classification of Greca et al.^[8] of groups I/R and R-PosC were subjected to statistical analysis by Kruskal Wallis test where it was found a *P* value of 0.002 showing that the difference between groups was statistically significant (Figure 5).

Table 2 - Number of rats according to the focal edema scores at histological examination in groups: A (ischemia and reperfusion), B (remote post conditioning) and C (control).

Focal edema	A	B	C
1 (normal)	0	6	8
2 (slight)	0	2	0
3 (mild)	3	0	0
4 (severe)	5	0	0
Total of animals	8	8	8
Average scores \pm standard deviation	^A 3.6 \pm 0.5	^B 1.3 \pm 0.5	^B 1.0 \pm 0.0
Median of scores	4	1	1

Note: Kruskal Wallis test followed by Student-Newman – Keuls test. Equal letters indicate statistically significant difference. Different letters indicate statistically significant difference.

A x B x C: P-value=<0.001

A x B: P-value=0.002

A x C: P-value=<0.001

B x C: P-value=0.572

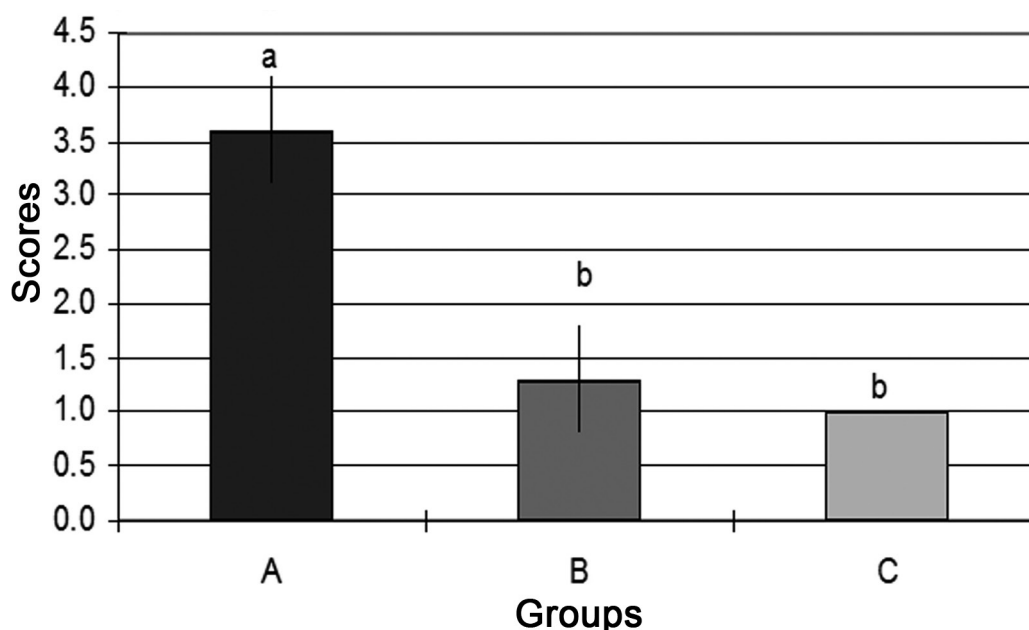


Fig. 5 - Mean and standard deviation scores of the focal edema at histological examination in groups: A (ischemia and reperfusion), B (remote postconditioning) and C (control).

Note: Kruskal Wallis followed by Student-Newman – Keuls test. Equal lowercase letters indicate statistically significant difference. Different lowercase letters indicate statistically significant difference. P-value=<0.001;

A x B: P-value=0.002; A x C: P-value=<0.001; B x C: P-value=0.572.

DISCUSSION

According to Pinheiro et al.^[9] the main mediators and effectors involved in the PosC mechanisms are: adenosine, nitric oxide, the K ATP-dependent channel, the pro-survival kinase and the mitochondrial permeability transition pore.

The biological expression of these mediators seems to de-

pend on the time of reperfusion/ischemia and animal species. Therefore, it has been suggested that the duration of ischemia and reperfusion protocol in PosC is species dependent and the number of cycles of ischemia and reperfusion seems to be less important than its duration^[9]. Thus, we observed in this study that with three cycles of two minutes interspersed of ischemia and reperfusion in rats we obtained cellular pro-

tection similar to other literature studies with different cycles and times, but always brief periods, non-lethal, of ischemia and reperfusion applied in an organ or tissue.

According Minamino^[10] transient limb ischemia is a simple non-invasive stimulation with significant clinical potential and high performance. In addition, the R-PosC procedure can be applied before or during sustained ischemia and/or during reperfusion. The R-PosC could be the most effective way to protect a noble organ such as the heart, brain, lungs and kidneys without applying the method directly on them. It is still uncertain how the R-PosC exerts cardioprotection. However, two main hypotheses are proposed. The neural hypothesis suggests that autocoid released from remote ischemic organ influence the afferent neural pathway, which in turn activates the neural efferent pathways to trigger organ protection. According humoral hypothesis, autocoid released from the remote ischemic tissue are transported to the end-organ, resulting in the activation of kinase signaling pathways in the end body^[10].

Loukogeorgakis et al.^[11] were the first to assess the effect of R-PosC in humans, demonstrating that it may be induced by limb transient ischemia. The protection offered by the R-PosC was assigned in this research to the activation of K_{ATP} channels.

This study demonstrated that the R-PosC has the ability to mitigate reperfusion injury distant from the model used. Thus, it opens up numerous possibilities of research to study the lung parenchyma protection in the microcirculation stress situations: shock, cardiopulmonary bypass, organ transplantation, acute organ ischemia, compartment syndrome and sepsis.

Considering that the PrC has a protective effect similar to PoC, as demonstrated by Santos et al.^[12] in an experimental study of mesenteric ischemia and reperfusion, one would assume that the remote preconditioning (R-PrC) also offers protection similar to R-PosC. However, when confirming this hypothesis, a number of advantages favor the latter, since the most frequent clinical situation is that of establishing the treatment when the process of ischemia has already been occurred and not otherwise.

When confirming the effectiveness of the R-PosC in humans in a manner similar to that observed in the present study, it is believed that there will be great importance in clinical practice, like provoking ischemia and reperfusion cycles in a lower limb, in order to protect the heart in the presence of many conditions such as acute myocardial infarction, shock, pulmonary embolism, etc.

Thus, this research opens new questions that allow extensive research in order to seek ways to promote cellular protection, using the R-PosC, since it has been shown important protection to the lung parenchyma of rats subjected to ischemia and systemic reperfusion process.

CONCLUSION

The remote ischemic postconditioning was able to minimize the inflammatory lesions of the lung parenchyma of rats subjected to ischemia and systemic reperfusion process.

Authors' roles & responsibilities

RCD	Writing; bibliographic survey
JCDVP	Review
ACBA	Guidance
GVR	Bibliographic survey
RAB	Review
CHMS	Guidance
ERCP	Statistical analysis
JASG	Experimental Surgery

REFERENCES

1. Santos CHM, Pontes JCVD, Gomes OM. Terapêutica medicamentosa na isquemia e reperfusão mesentérica: revisão da literatura. *Rev Bras Coloproctol.* 2006;26(1):28-33.
2. Xiong J, Liao X, Xue FS, Yuan YJ, Wang Q, Liu JH. Remote ischemia conditioning-an endogenous cardioprotective strategy from outside the heart. *Chin Med J (Engl).* 2011;124(14):2209-15.
3. Przyklenk K, Bauer B, Ovize M, Kloner RA, Whittaker P. Regional ischemic 'preconditioning' protects remote virgin myocardium from subsequent sustained coronary occlusion. *Circulation.* 1993;87(3):893-9.
4. Santos CHM, Pontes JCVD, Gomes OM, Mijji LNO, Bispo MAF. Avaliação do pós-condicionamento isquêmico no tratamento da isquemia mesentérica: estudo experimental em ratos. *Rev Bras Cir Cardiovasc.* 2009;24(2):150-6.
5. Kerendi F, Kin H, Halkos ME, Jiang R, Zatta AJ, Zhao ZQ, et al. Remote postconditioning. Brief renal ischemia and reperfusion applied before coronary artery reperfusion reduces myocardial infarct size via endogenous activation of adenosine receptors. *Basic Res Cardiol.* 2005;100(5):404-12.
6. Andreka G, Vertesaljai M, Szantho G, Font G, Piroth Z, Fontos G, et al. Remote ischaemic postconditioning protects the heart during acute myocardial infarction in pigs. *Heart.* 2007;93(6):749-52.
7. Gritsopoulos G, Iliodromitis EK, Zoga A, Farmakis D, Demerouti E, Papalois A, et al. Remote postconditioning is more potent than classic postconditioning in reducing the infarct size in anesthetized rabbits. *Cardiovasc Drugs Ther.* 2009;23(3):193-8.
8. Greca FH, Gonçalves NMFM, Souza Filho ZA, Noronha L, Silva RFKC, Rubin MR. The protective effect of methylene blue in lungs, small bowel and kidney after intestinal ischemia and reperfusion. *Acta Cir Bras.* 2008;23(2):149-56.

-
9. Pinheiro BV, Holanda MA, Araujo FG, Romaldini H. Lesão pulmonar de reperfusão. *J Pneumol.* 1999;25(2):124-36.
 10. Minamino T. Cardioprotection from ischemia/reperfusion injury: basic and translational research. *Circ J.* 2012;76(5):1074-82.
 11. Loukogeorgakis SP, Williams R, Panagiotidou AT, Kolvekar SK, Donald A, Cole TJ. Transient limb ischemia induces remote preconditioning and remote postconditioning in humans by ATP channel-dependent mechanism. *Circulation.* 2007;116(12):1386-95.
 12. Santos CH, Gomes OM, Pontes JC, Mijji LN, Bispo MA. The ischemic preconditioning and postconditioning effect on the intestinal mucosa of rats undergoing mesenteric ischemia/reperfusion procedure. *Acta Cir Bras.* 2008;23(1):22-8.