

Article

## Three Continents Claiming an Archipelago: The Evolution of Aegean's Herpetofaunal Diversity

Petros Lymberakis <sup>1,\*</sup> and Nikos Poulakakis <sup>1,2</sup>

<sup>1</sup> Natural History Museum of Crete, University of Crete, Knossou Ave. 71409, Irakleio, Crete, Greece; E-Mail: poulakakis@nhmc.uoc.gr

<sup>2</sup> Department of Biology, University of Crete, Vassilika Vouton, 71003, Irakleio, Crete, Greece

\* Author to whom correspondence should be addressed; E-Mail: lyberis@nhmc.uoc.gr; Tel.: +30-2810-393-266; Fax: +30-2810-324-366.

Received: 24 November 2009 / Accepted: 5 February 2010 / Published: 16 February 2010

---

**Abstract:** The area of the Aegean can be described as one of nature's most active laboratories. The contemporary geomorphology of the Aegean is a result of diverse and still ongoing geological events, which coupled with climate changes, have created mountains and thousands of islands. The Aegean bridges three continents, where human activity has been recorded for at least 10,000 years. Herpetofauna diversity offered early researchers the possibility of describing patterns in the Aegean, especially as the distributional limit for several species and faunal elements. The patterns initially described at a rather coarse scale formed the frame on which the application of new techniques opened new views and permitted finer analyses. Here, we assess recent works on the Aegean's herpetofauna, outlining the role of sea barriers, especially the Mid Aegean Trench (MAT). We propose four basic patterns (pre-MAT, post-MAT, newcomers, and that of an outlier) and discuss exceptions to these patterns, to interpret the diversity recorded. The interdisciplinary study of taxonomy helps explaining the observed diversity and provides powerful arguments for how exploring diversity can be used to explain more than biological processes.

**Keywords:** Aegean; Greece; reptiles; amphibians; patterns

---

## 1. Introduction

### 1.1. The Geological Background

The common perception of the Aegean is that of the Greek islands. Here we discuss the entire area of the Aegean sea including the adjacent landmasses of Greece and Turkey. Even though today the maritime element is predominant, the history of the Aegean begins with a continuous landmass (Ägäis), which appeared at the northern coast of the Tethys Ocean during the early Miocene ~23 MYA.

The tectonic events that caused this landmass to emerge and continue to change its morphology are: (1) The northward movement of the African tectonic plate and (2) The eastward displacement of the Anatolian microplate (driven from the northward displacement of the Arabian plate) causing in turn a fan-like expansion of the Aegean southward. Africa's movement to the north is also responsible for the appearance of a series of volcanic arcs north of the subduction zone, which is situated between Crete and Africa; The contemporary manifestation of the latter is mostly known from the volcanoes of Santorini, Milos and Nisyros. A note should be made in the case of Nisyros, since it is the only Aegean oceanic island in biogeographical terms, *i.e.*, it has never been connected to a continental area [1].

From another point, the true effects of volcanism on biodiversity have not been studied. A typical example is the herpetofauna of the two island groups (Milos and Skyros) of volcanic origin. We know of the biological peculiarities of the two groups, but cannot answer how and when, let alone why these faunas originated.

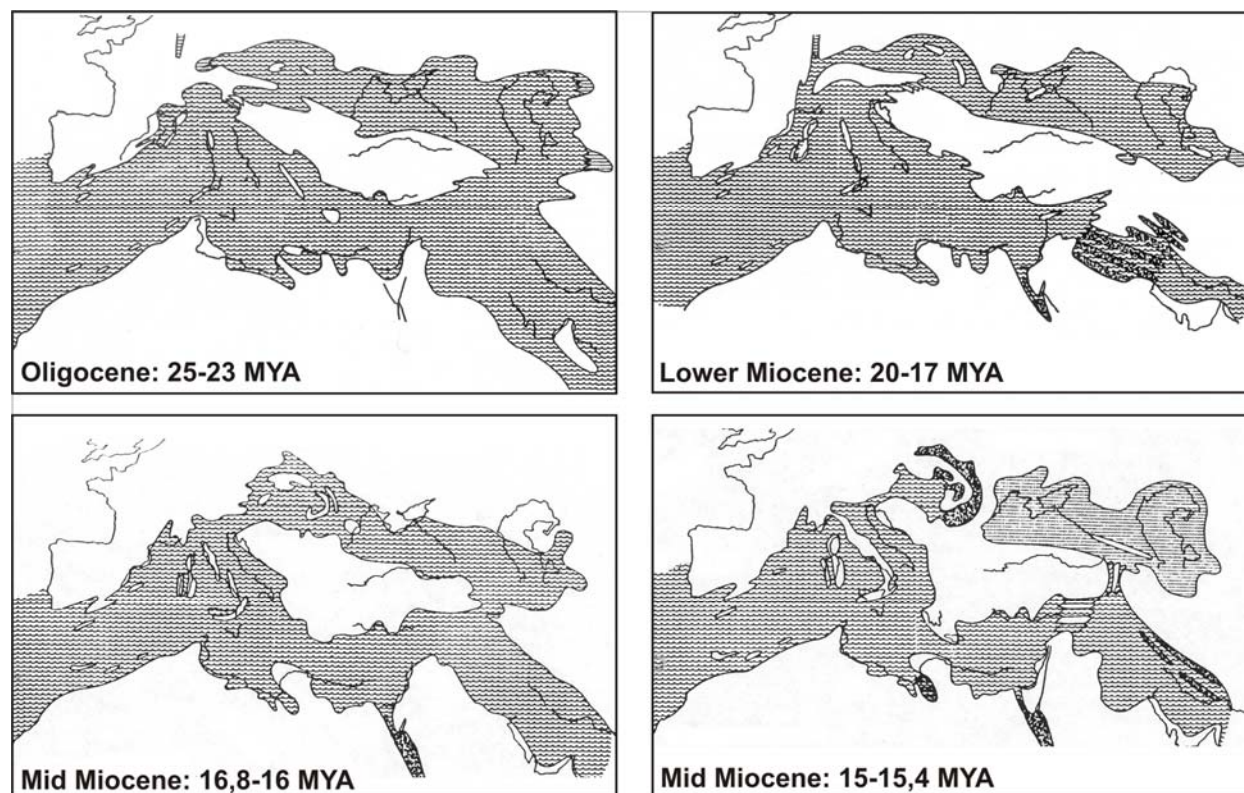
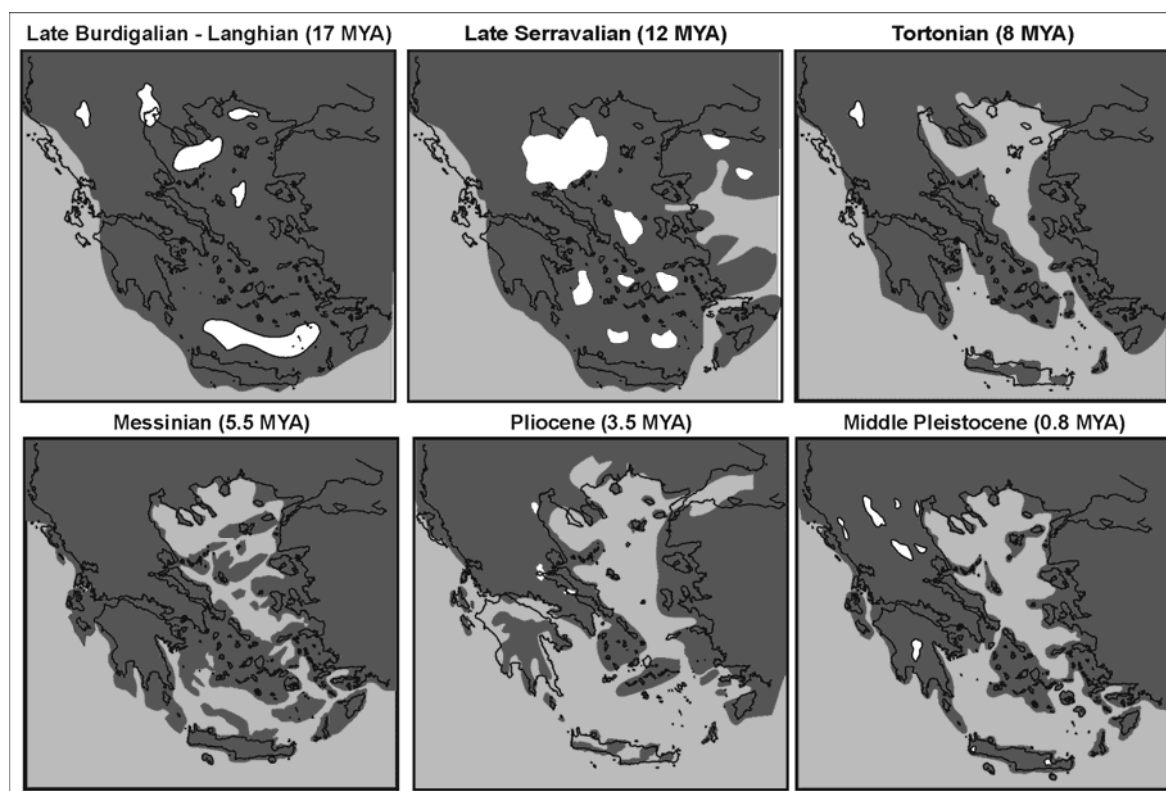
Global climatic changes (influenced by tectonics as well) caused the sea level to change in several instances. The most dramatic of the sea level changes occurred during the Messinian ~5 MYA during which the closing of the Gibraltar straits led to an almost complete desiccation of the Mediterranean [2]. The process was reversed only a few hundred-thousand years later *i.e.*, “seconds” in geological and evolutionary time.

Less accentuated eustatic movements of the sea level, but by no means unimportant for biological processes, were driven by climate change through the glacial/interglacial periods of the Pleistocene.

An overview of palaeogeographic reconstructions of the area are presented in Figures 1 and 2.

The development of the area's climate during the last 23 MY is too complex an issue to describe in a brief introduction. Only as an outline, it may be said that it began with a warm early Miocene, cooling until the Pleistocene where the typical Mediterranean climate prevailed, however see [5].

On a finer scale, orogenetic phenomena shaped the Greek mountain ranges. Crete has the most outstanding position among the islands, with more than 50 peaks over 2,000 m above sea level. Of the other islands, only Samothrace and Evvoia have peaks over 1,500 m and less than 10 islands have altitudes over 1,000 m. On the continental area, three mountain ranges appear to have played an important role in the shaping of the contemporary herpetofauna: the Pindos mountain range crossing continental Greece from north to south creating an east-west barrier; the Rhodope mountain range between Greece and Bulgaria often delimiting the southernmost distribution of northern taxa and the Taurus and Antitaurus mountain ranges in Turkey filtering organisms dispersal.

**Figure 1.** Palaeogeographic reconstruction of the Mediterranean until the Mid Miocene after [3].**Figure 2.** Palaeogeographic reconstruction of the Aegean area from the late Burdigaldian until the mid Pleistocene. For details and references see [4].

The forming of the contemporary geomorphology is a result of diverse, still ongoing, geological events, which coupled with climate changes, have uplifted, flooded, joined, separated, rejoined and re-separated landmasses, creating high mountains and thousands of islands.

### 1.2. The Biological Background

Elements from three different continents and their biogeographical subdivisions compose the Aegean flora and fauna, which combined with the diverse geomorphology, have resulted in a high species richness and endemism.

Intense human activities have been documented for at least 10,000 years, leaving their conspicuous mark on the forming of the landscape [6]. The oldest record of human settlement in the Mediterranean dates as far back as the lower Pleistocene *circa* 1.5 MYA [7].

The Aegean herpetofauna had drawn the attention of specialists since the 19th century e.g., [8-11] while sporadic reports are even older. References during the 20th century increased manifold. The first synthetic work appeared by a dedicated student of the Greek herpetofauna, F. Werner [12]. Soon he was followed by another important contribution [13] with even a wider geographic view. A first circle of studies on the Aegean's herpetofauna closed with [14], a seminal work, which in addition to the author's detailed data on the area's herpetofauna, includes a first attempt to interpret the observed diversity. The ideas of the previous workers set a frame on which a new generation of herpetologists elaborated working on specific topics (faunistic and/or geographical) of this complex environment. Greek researchers, with very few exceptions, appear in the literature in the late 1960s, but systematically only after the 1970s.

A true renaissance in reptile systematics and taxonomy dawned some two decades ago as technological advances offered the possibility for exploring and comparing on wide scale datasets (*i.e.*, DNA sequences) inaccessible to previous authors.

Here we attempt to outline patterns of Aegean's herpetofauna diversity as the complex outcome of the direct and indirect effects of the aforementioned processes on the species' evolution, as revealed by a diversity of methodological approaches.

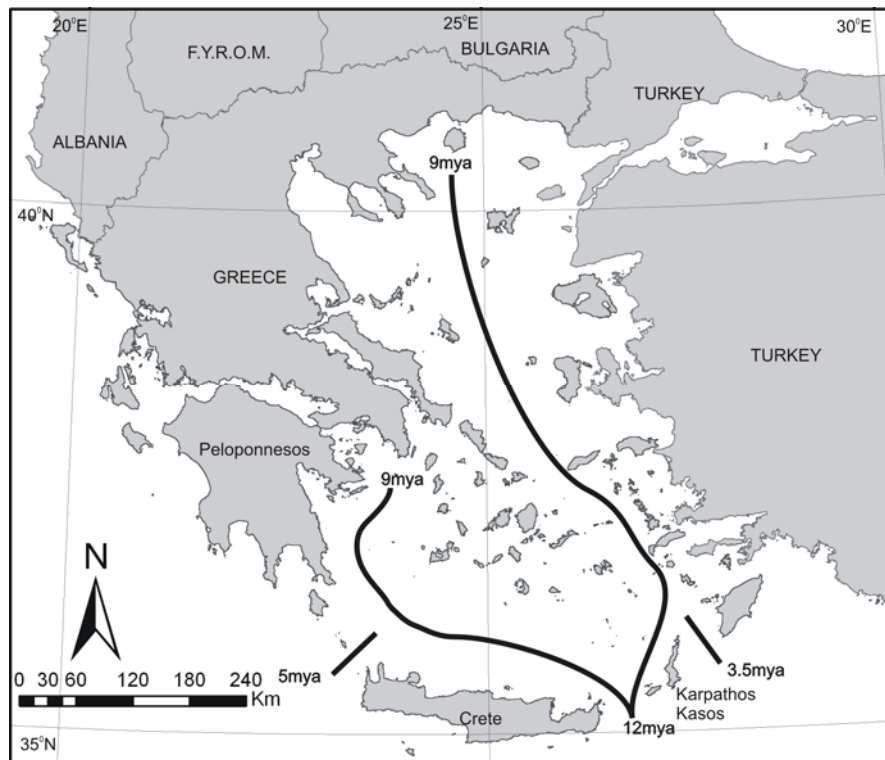
### 1.3. Approach and Scope

Here we use the most recent data on several Aegean herpetofaunal species and in each case try to distinguish patterns that may be attributed to the context of the frame presented. The basic feature of reference will regard the main barriers of geological origin as presented in Figure 3.

These include: (A) the opening of the Mid-Aegean Trench (MAT hereafter), which initiated by the splitting of Crete from Kasos-Karpathos and Asia Minor. This initial split bifurcated, forming the MAT at a north south axis and a second split in a SE-NW axis separating Crete and Peloponnesos from the Cyclades islands. (B) The separation of Crete from Peloponnesos after the Messinian crisis and (C) the separation of Kasos-Karpathos from Rhodes (and Asia Minor) during the Pliocene. We examine if and how the species' contemporary distributions fit this frame and propose alternative hypotheses if not. Moreover, we examine the causal factors, *i.e.*, vicariance or dispersal, which may account for the observed distribution. Finally, where possible, we fit a time scale to our explanations,

in search of possible historical events that may have affected the evolution of more species simultaneously.

**Figure 3.** Basic barriers of geological origin in the Aegean. The exact depiction of the Mid-Aegean Trench's position (especially in its southern third) reflects the authors' synthesis of extant biological and geological data.



## 2. The Data

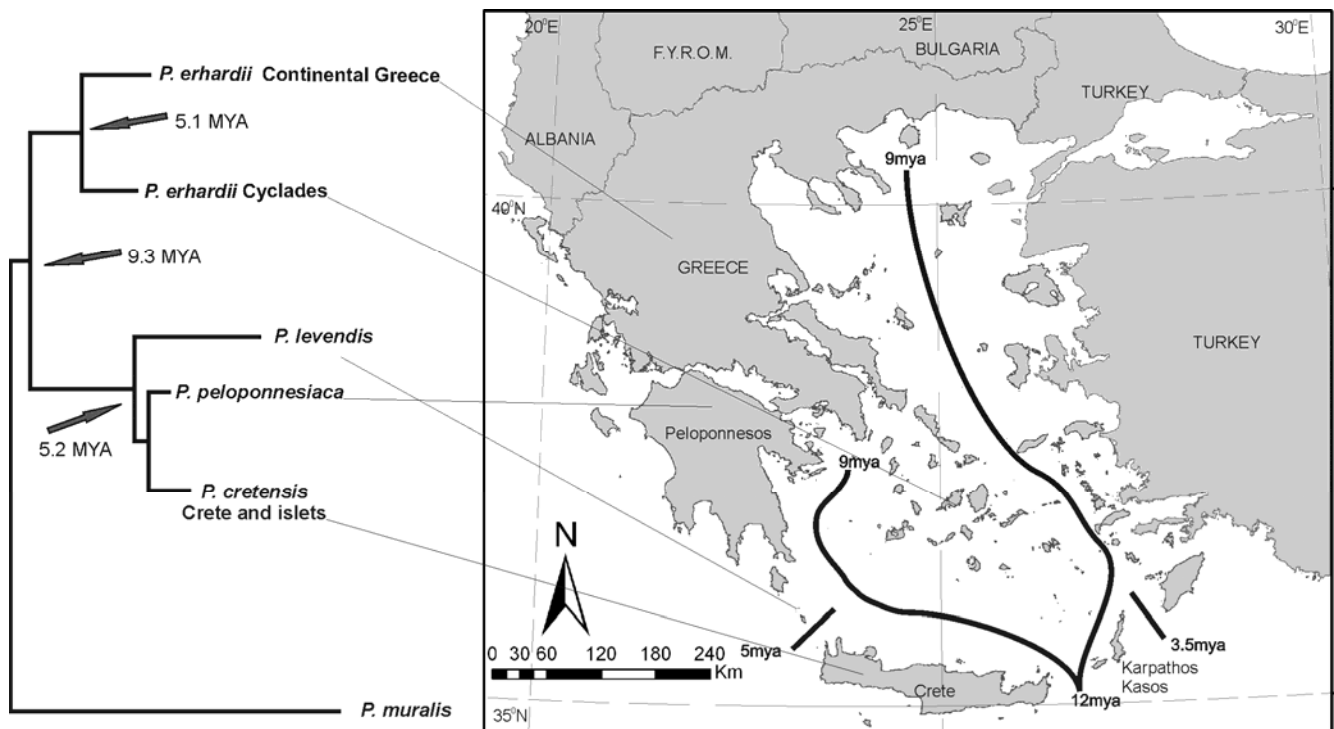
There are eight species of the genus *Podarcis* distributed in Greece, of which five are endemic to islands and Peloponnesos. According to their phylogenetic relationships, they can be divided into three groups: The *P. erhardii* group (*P. erhardii*, *P. peloponnesiaca*, *P. cretensis*, *P. levendis*), the *P. taurica* group (*P. taurica*, *P. milensis*, *P. gaigeae*) and a last group with a single representative *P. muralis*.

Phylogenetic relationships among the major lineages of *Podarcis* and consequently among the groups are not clear.

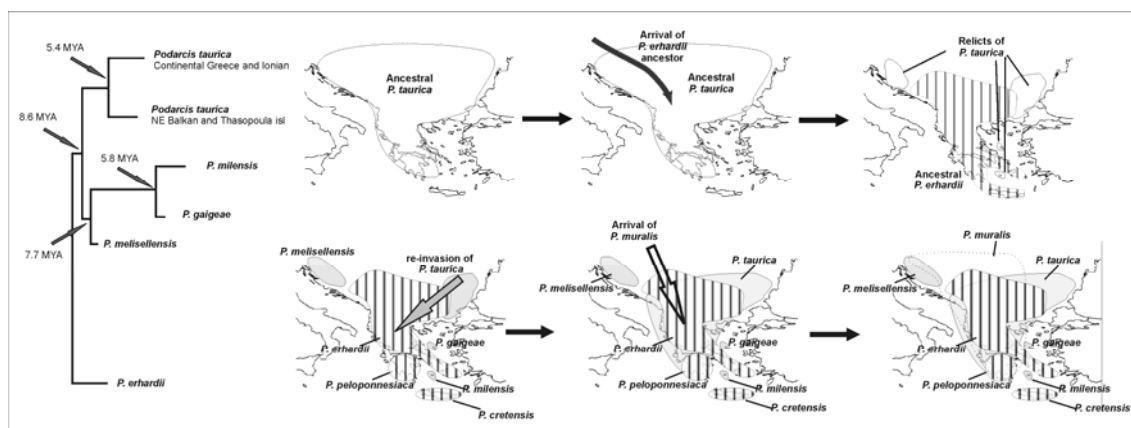
The study of the *P. erhardii*'s group [15,16] revealed hidden diversity and concluded with a plausible biogeographic scenario. In brief, the group's ancestral form appears to have reached Greece from the north and initially split in two lineages. Consequent vicariant events formed the distinct taxa we now recognize (Figure 4).

The second group (*P. taurica*), largely overlapping with the previous one in time and space, has a similar history in the area [4]. The interaction of the two species groups appears as another factor that influenced present day distributions (Figure 5).

**Figure 4.** Phylogenetic relationships of *P. erhardii* group. Note that the taxa respect the 12-9 MYA boundaries and that contemporary species differentiate around 5 MYA, *i.e.*, near the Messinian crisis.



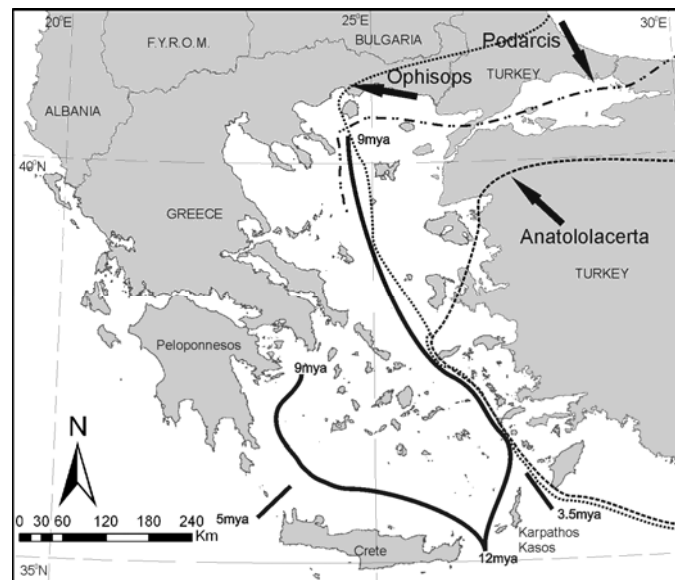
**Figure 5.** Phylogenetic relationships of *P. taurica* group and the proposed interaction with the *P. erhardii* group after [17]. Taxa respect the 12-9 MYA boundaries and contemporary species, such as *P. erhardii*, differentiate near the Messinian crisis. Dotted line depicts proposed dispersal route. Grey arrow suggests a second invasion from the north-east.



The genus *Podarcis* is considered to have evolved in south-west Europe and expanded eastwards [18]. However, it never made it into Asia, blocked at least in its southern range by the forming of the MAT. A different lacertid, *Ophisops elegans*, which arrived in the area from Asia Minor, hardly made it to Europe in Thrace, NE Greece [19]. It is possible that *O. elegans* arrived in the area later than 3.5 MYA since it is “unexpectedly absent from Kasos and Karpachos” as observed in [14].

A different pattern is shown by another lacertid genus, *Anatololacerta*. The genus is distributed in west and south Turkey, but only on some south eastern Aegean islands and not the ones in the north (Figure 6). A possible explanation is a very recent northwards dispersal of *Anatololacerta*, after the splitting of e.g., Lesvos and Khios, which split from Anatolia after the last ice age *circa* 12 KYA [20]. The relative distribution of the three genera is shown in Figure 6.

**Figure 6.** Relative position of the distribution limits of three lacertid genera in the Aegean.

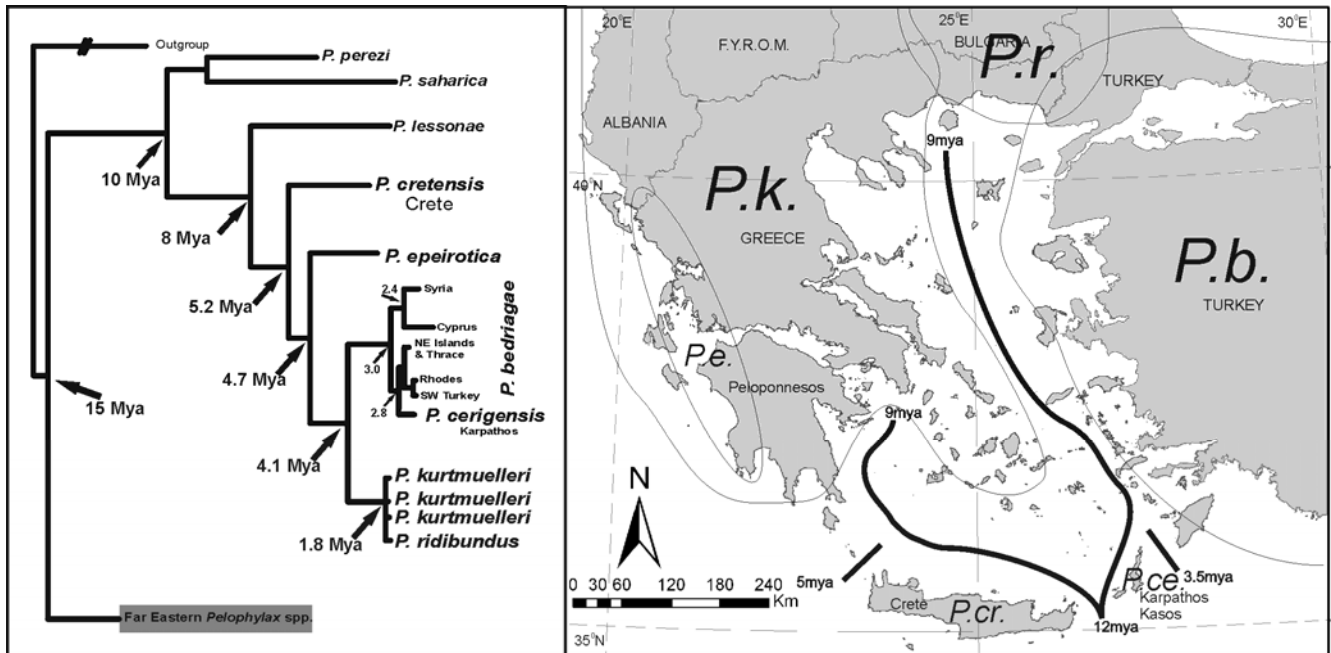


The case of *Pelophylax spp.* in the area is more complex, involving several refugia, recolonizations and in some cases possible overseas dispersal. The taxonomy of the group remains uncertain despite the plethora of morphological, bioacoustic, protein and DNA data analyzed in several works. A tentative explanation of the observed pattern is proposed in Figure 7.

The splitting of southern European taxa of the *Bufo viridis* group occurred between Lower and Middle Pliocene, *i.e.*, after the Messinian crisis [24], a pattern similar to the one described for *Pelophylax* (Figure 7). Later retreats and recolonizations have occurred in a different manner in *Bufo* than the one proposed for *Pelophylax*, in which a northern refuge is proposed to have played an important role. The broader biogeographic pattern, which describes the evolution of both groups however is similar to the one showed for many Palearctic animal and plant species: extinction and recolonization in higher latitudes and altitudinal shifts and complex refugia nearer the tropics [25]. A third group of anuran amphibians, belonging to the genus *Hyla*, was until now considered uniform in the area, as in the case of *Bufo* toads. *Hyla spp.* have been found to have a similar pattern with the two previous groups, *i.e.*, different taxa on the two sides of the MAT, without however having the split between the two taxa dated yet [26].



**Figure 7.** Phylogenetic relationships and distribution of *Pelophylax* spp. in the area after [21]. Despite the complex relationships, taxa still respect the 12-9 MYA boundaries. The differentiation of contemporary species once again begins near the Messinian crisis, but several later speciation incidents follow. Vicariant events followed by recolonization episodes appear as the prevailing scenario for the pattern observed. The case of *Pelophylax* supports the hypothesis of refugia within refugia [22,23] (and references therein).



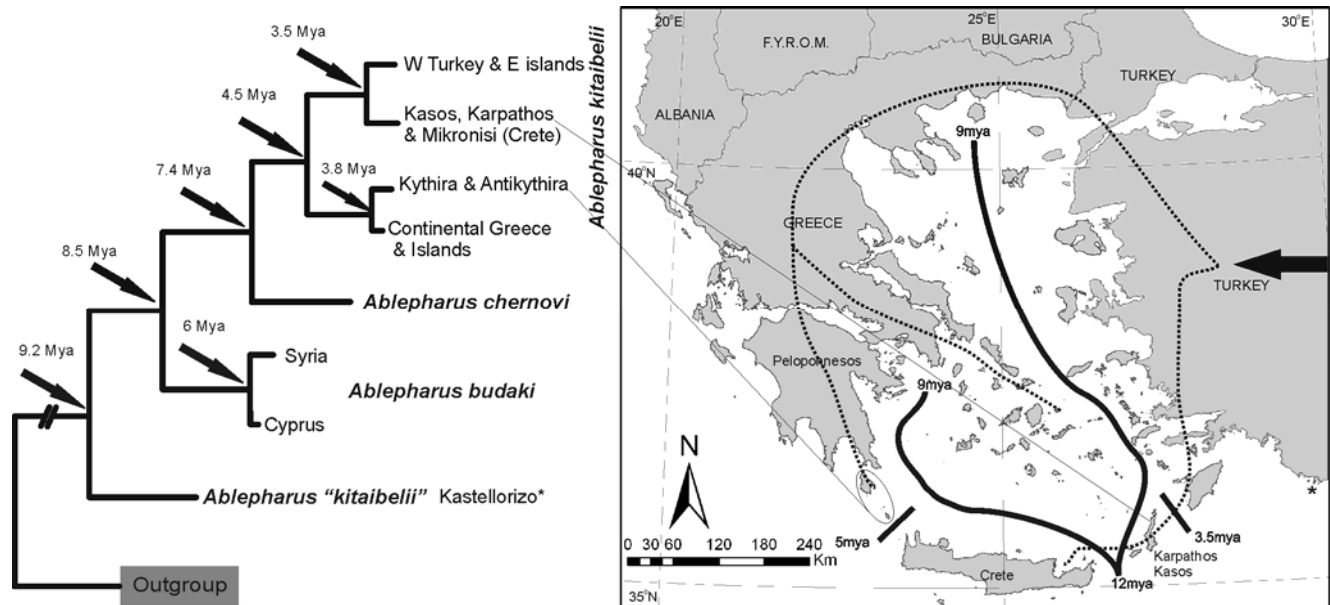
Another amphibian group, Salamanders, of the genera *Salamandra*, *Mertensiella* and *Lyciasalamandra*, exhibit a pattern predominantly formed by vicariant events. Weisrock [27] suggested an initial vicariant event split *Salamandra* from *Mertensiella* (the latter at the time of the publication contained the genus *Lyciasalamandra*) at circa 12MYA, a date which corresponds to the opening of the MAT. A little earlier, i.e., 13MYA, is the time European *Salamandra* spp. split with *S. infraimmaculata* [28].

The differentiation within *Lyciasalamandra* (*Mertensiella luschani* group at the time) is estimated to have begun at 5.8 MYA and the authors contribute it to the intense folding of the Anatolian plateau, which in turn caused rapid isolations among populations. The latter appears as a polytomy in phylogenetic trees [29]. However, a simple vicariant event may not explain this situation when regarded in further detail [30]: The species from Kasos and Karpachos in the Aegean appears to have sister species relationships (in regards to mt DNA) with the easternmost species in the Beydaglari Mountains some 300 km to the east, and crossing the distributions of all the remaining congeneric species. Veith and coworkers [29] propose dispersal events (namely rafting) to explain the discordance between mt DNA relationships and geography.

The snake-eyed skink, *Ablepharus kitaibelii*, is considered to have arrived in the area from the east and is distributed throughout Greece with the exception of Crete, reaching as far north as the northern Balkans. The uniformity of the nominal subspecies distribution over a vast area was challenged [31]. Phylogeographic relationships and the biogeographical scenario for its distribution in the Aegean are shown in Figure 8.



**Figure 8.** Phylogenetic relationships and distribution of *Ablepharus* taxa in the area. The results suggest a dispersal (dotted lines) *versus* a vicariant pattern of distribution. Taxa respect the 12-9 MYA boundaries.



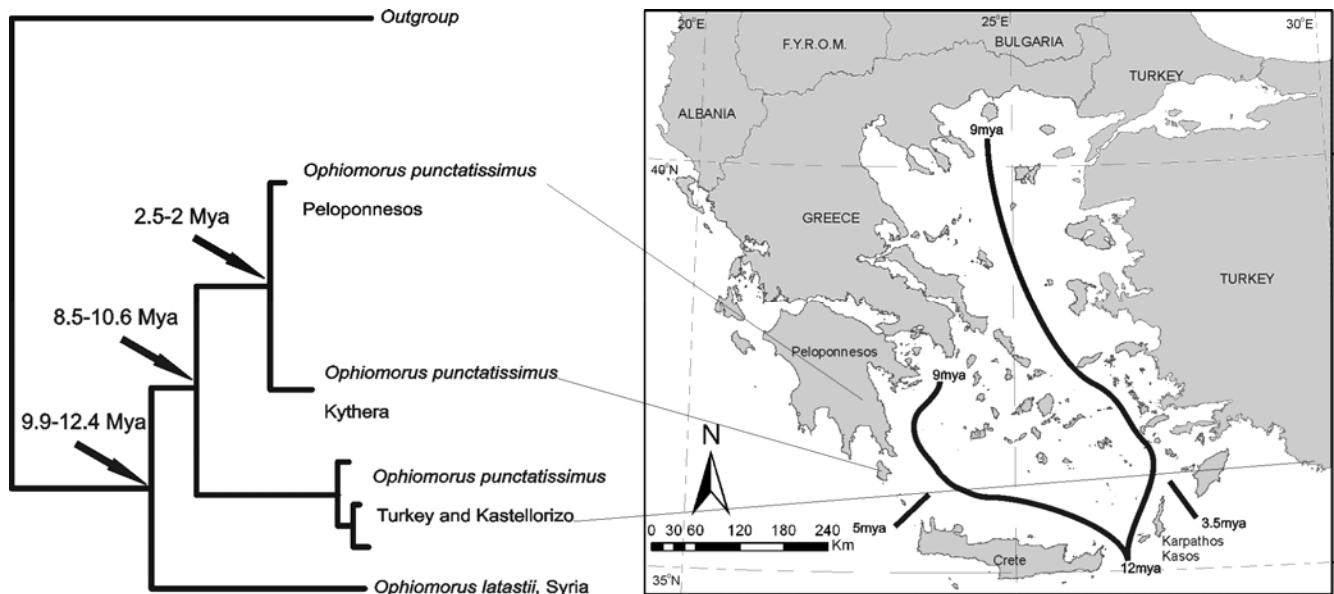
The differentiation of Aegean populations of *Ablepharus* once again begins soon after the Messinian crisis and two isolation episodes follow during the Pliocene. The population of Kastellorizo (\*), presumably related to populations of south-west Turkey, render *A. kitaibellii* paraphyletic. Detailed sampling in that area may reveal further hidden diversity.

A species with a disjunct distribution, *Ophiomorus punctatissimus*, was examined [32] to explore its phylogeographic relationships. Populations are restricted to Peloponnesos, the island of Kythera, a single spot in the south-east of continental Greece, a small area in southwest Turkey and the nearby Greek island of Kastellorizo (Figure 9).

Another species, *Cyrtopodion kotschy*, appears to have an equally long history in the area [33]. Unlike *Ophiomorus*, which remained restricted locally, *C. kotschy* is widespread throughout the area. It has dense populations on small islands and islets and is restricted on continental areas and big islands (e.g., Crete). The authors find a high intraspecific variation in CO1 (ranging from 1.2–21.6%) and no geographic coherence of the major clades. This result possibly indicates the need for more samples and more molecular markers to better understand the animal's history in the area, as in the case of yet another pre-Messinian occupant of the area, the dice snake (*Natrix tessellata*). An elaborate explanation of the dice snake's history, involving Asian origin, several refugia and instances of recession and recolonization has been proposed [34].

Two cases of human introductions have been described recently. The first regards the Moorish gecko, *Tarentola mauritanica* [35]. The authors found mt DNA fragments of all European populations to be identical to the animals from Tunisia. The species originates from Northern Africa where mt DNA is differentiated in a geographically structured pattern.

**Figure 9.** Phylogenetic relationships and distribution of *Ophiomorus* taxa in the area. The most plausible scenario is that the species existed in the area that was separated into two with the 12-9 MYA splitting of the Aegean. If this hypothesis is correct, fossils of the species are expected to be found in Cyclades—possibly even Crete.



The Mediterranean distribution of another gecko, *Hemidactylus turcicus*, which originates from the Near East (Jordan), has been shown to be the result of human introductions [36].

Apart from their biological interest, the two latter cases bring history in to play: which trade and at what time in each case, caused such an extensive, human induced, dispersal? Corti and coworkers [37] have presented a preliminary approach to this issue.

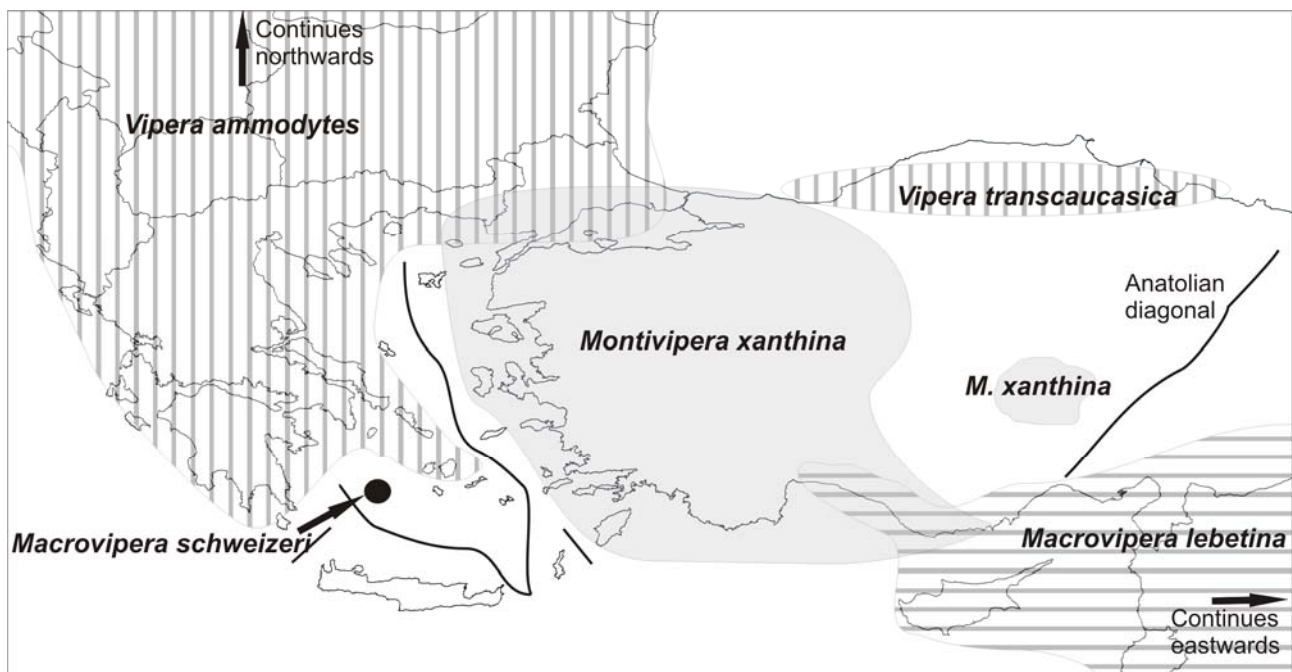
The Ocellated skink, *Chalcides ocellatus*, is a somewhat different case from the two geckos as both dispersal and human introductions appear to be responsible for its present distribution [38]. The species originated in Morocco from where during Early Pliocene it expanded eastwards. However mt DNA relationships appear having a geographical structure up to Cyrenaica in Libya. From there and eastwards, population relationships do not seem to follow any geographic pattern indicating possible involuntary human introductions.

A much more peculiar case of possible human introduction regards *Hierophis viridiflavus*, a species grossly distributed from the Pyrenees through France and Italy to the Northern Dalmatian coast. The long discussed *Coluber gyarusensis*, a snake found exclusively on the non inhabited island of Gyarus in the Cyclades, cannot be distinguished, in regards to CO1 and 12s rRNA genes as well as morphological characters, from *H. viridiflavus* [39]. Our hypothesis is that there is little chance that the species was involuntarily introduced to Gyarus as it is possible for the two geckos and the skink species. Snake rituals were common during the antiquity; even today there are snake rituals connected to Greek orthodox ceremonies in the island of Kephallonia involving *Telescopus fallax*, hence the case of *H. viridiflavus* represents yet another riddle for archaeologists and historians to solve.

Eurasian Vipers of the genera *Montivipera* and *Macrovipera* from the one side and *Vipera* and *Daboia* from the other appear to have split earlier than 20 MYA [40-42]. In what concerns *Vipera ammodytes*, a post Messinian differentiation in four distinct groups within the Balkans is

proposed [41], further supporting the idea of “refugia within refugia”. It is interesting to compare this with the proposed phylogeny of the second clade (*Montivipera*/*Macrovipera*). *Macrovipera* is currently considered to contain two species: *M. schweizeri* and *M. lebetina*. These have split during the Messinian crisis ca 5MYA [40,43], leaving today a restricted population on the Aegean island group of Milos (*M. schweizeri*) and *M. lebetina* with a wide distribution to the east of the Anatolian Diagonal [44] in Turkey, with a wide gap void of the genus in Greek islands and western Turkey (Figure 10). This void may have left space for (or may have in part been caused by) the invasion and further differentiation of *V. ammodytes* in the area. Moreover, a third species is distributed in western Turkey and in particular west of the Anatolian Diagonal reaching Eastern Greece: *Montivipera xanthina* [44]. The authors suggest a vicariant differentiation of *Montivipera* beginning in the early Pliocene to the widespread *M. xanthina* and four more species with restricted distributions along the mountains forming the Anatolian diagonal. Once more we may see this event coupled with the earlier splitting of *Macrovipera* and to its extinction from east of Milos until the Anatolian diagonal.

**Figure 10.** Approximate distributions of certain vipers in the Aegean area. Not mentioned in the text but shown here is *V. transcaucasica*, until recently considered a subspecies of *V. ammodytes*. Another isolated population of the species (not shown) occurs east of the Anatolian diagonal. A vicariant event and/or competition with *M. xanthina* may have been responsible for the gap in *V. ammodytes* distribution. Note that despite their long history in the area, vipers respect the MAT as well as the Anatolian Diagonal and they appear to have never reached the southern Aegean.



A case of another snake, *Malpolon insignitus* [45] is one of impressive long distance dispersal. Ancestral populations of the species in the Maghreb (NW Africa) dispersed both westwards and eastwards during late Miocene. The east-moving clade traveled through northern Africa and from there continued to the east and north reaching the Caspian Sea to the north-east and the Dalmatian coast to the north-west. The later clade invaded Greece, but did not make it to the Cyclades or Crete.

A unique pattern is observed in a freshwater terrapin, *Mauremys rivulata*. Mantziou and coworkers [46] compared partial mt DNA sequences of animals from Greece, Cyprus, and Jordan finding as little as 0.7% mean genetic difference with no geographic structure. The terrapin appears to have dispersed erratically. This pattern may be explained since the species abounds in fresh and brackish waters and at least for short periods is tolerant of salt water.

### 3. Discussion

#### 3.1. Sources of Diversity

The sheer amount of diversity studied renders the separation of the effect of each of the aforementioned phenomena difficult to account for. On the other hand “given the plethora of species it is easy to find distributional patterns which may fit the craziest hypothesis” [47]. The same author however notes that one should not close the eyes before patterns which have not been expected and are repeatedly found. Before approaching the herpetofaunal diversity addressed here we consider that we should recapitulate the diversity of factors which influence it.

##### *Abiotic diversity*

Geological events in the area account for the diversity in geomorphological features as well as for various substrates (sedimentary, volcanic, metamorphic or combinations of the three). Both factors, but mainly geomorphology, influence geographic diversity by hindering or bringing in contact faunal elements from different origins. At the same time geological events have impact on the climate. The above change in unpredictable combinations with time.

##### *Biological diversity A: non human induced*

Biological processes generate diversity, which is indispensable for providing material for natural selection to process. The means of producing this diversity are interactions among the faunal elements as well as between the later and the environment both submitting to its changes and causing it to change [48]. Diversity increases in a positive feedback loop [49,50]. In the words of Benton and Emerson [49], “Ironically, high species diversity may lead to more speciation, not, as had been assumed, less: more species create more opportunities and selective pressures for other species to respond to, rather than capping diversity at a fixed equilibrium level.”

A more specific point regarding the area in question lays in its role as a refugium in several instances during the quaternary, where the genetic information already present is redistributed, increasing diversity [22,51].

The meeting of faunal elements of different origins may initially have a negative impact on overall diversity by mutual exclusion of species with the same or similar niches. However, in the long term they will follow the flow of the positive feedback described, increasing diversity.

### *Biological diversity B: human induced*

Humans act upon biological diversity in practically all conceivable manners: voluntary and involuntary introductions as well as extinctions of species (e.g., hunting, poisoning, polluting, clearing forests for cultivation or drying up wetlands), which may occur in various scales (local to global), and overall, lead to homogenization processes (see also [52] and references therein). Even though there are indications showing that human practices in the area have covered the entire spectrum described, it is difficult, if at all possible, to assess in details their impact on the herpetofauna.

The interaction of the described sources of diversity has resulted in the high biodiversity we record today.

### *3.2. Three Basic Patterns, an Outlier and Exceptions*

#### *The “Ancients”*

The first regards animals present in the area before the opening of the Mid Aegean Trench (MAT). Four of the described cases (*Samalamandra/Mertensiella-Lyciasalamandra*), *Ophiomorus*, *C. kotschyi*, *N. tessellata*) may be included in this group. It is highly probable that two more groups, *Pelophylax* and *Bufo* may be as well included in this category, but this hypothesis may not be supported until more data become available. Another uncertain case is the one of *Macrovipera*, which has been assumed to have split during the Messinian crisis [43]. However, *M. schweizeri* shares the Milos island group with *Podarcis milensis* which has been suggested to have split from mainland populations circa 8 MYA [4], a time compatible with the opening of the MAT. The opening of the MAT resulted in a vicariant splitting of populations, which may or may not be evident today. It is still obvious in the distance between *Ophiomorus* populations from Peloponnesos and SW Turkey and the couple *Salamandra/Lyciasalamandra*. In the case of the dice snake, events which occurred in later instances dominate present day distributions possibly blurring older effects.

All cases presented regard Palaearctic taxa. African animals have not yet come in to play.

#### *Post MAT*

The second basic pattern regards animals which arrived in the area after the formation of the MAT. *Podarcis*, *Ablepharus*, *Ophisops*, *Malpolon* as well as possibly *Bufo* and *Pelophylax*.

Beginning by the “ancients”, *Ophiomorus* remains restricted on the two sides of the MAT. *Lyciasalamandra* does not cross the MAT westwards even though it remained on Kasos/Karpathos islands. Asian and European species of *Salamandra* remained in their respective continents.

The anurans *Pelophylax spp.*, *Bufo spp.* and *Hyla spp.*, which evolved West and East of the MAT never crossed it, even though dispersal events occurred and in some cases brought distinct lineages into contact but only if the MAT was circumvented from the north.

Similarly, all taxa which arrived after the forming of the MAT appear bound by it. *Ophisops*, *Podarcis*, *Ablepharus*, *Anatololacerta*, *Malpolon*, *Vipera* and *Montivipera* are taxa of various origins (European, Asian, African) which fall in this case (but see paragraph on exceptions below). However, bounded by the MAT does not mean uniformity in pattern. Each taxon, restricted by its niche's

requirements and time, reacts differently to the same challenge. This is obvious comparing the cases of the three Asian lizards (*Ablepharus*, *Anatololacerta*, *Ophisops*).

#### *The newcomers*

The third category regards recent arrivals via human induced (voluntary or not) introductions. These animals (*Tarentola*, *Hemidactylus*, *Chalcides*, *H. viridiflavus*, *Chamaeleo africanus*) originate from all three continents and their distributions in the Aegean are random. Only as an observation, not yet deserving the “status” of a pattern, we notice that these species are found only in the southern part of the Aegean except for the anthropophilic *H. turcicus*, which marginally occupies coastal areas of the N Aegean. There may be an explanation for this observation, namely the turbulent geological history of the area, which resulted in severe fragmentation of landmasses and/or long periods of isolation (e.g., the island of Crete) which possibly decimated extant faunas. Crete in particular hosts all three lizard species of this category and has a recorded fossil herpetofauna, which includes animals presently not found on the island such as *Discoglossus* sp., *Testudo* sp., and *Agama* sp. [53]. Extant herpetofauna on Crete is considered as poor (14 species compared to more than 20 on the much smaller island of Rhodes) rendering it susceptible to host newcomers. Actually three alien taxa have arrived within the past decades (*Testudo* spp., *Trachemys scripta*, *Lithobates catesbeianus*), the two latter having established viable populations. Finally, the randomness mentioned, reflects an amalgam of ecological requirements with specific commercial routes and destinations. Answers to this problem may be sought in a historical/archaeological rather than a biological quest.

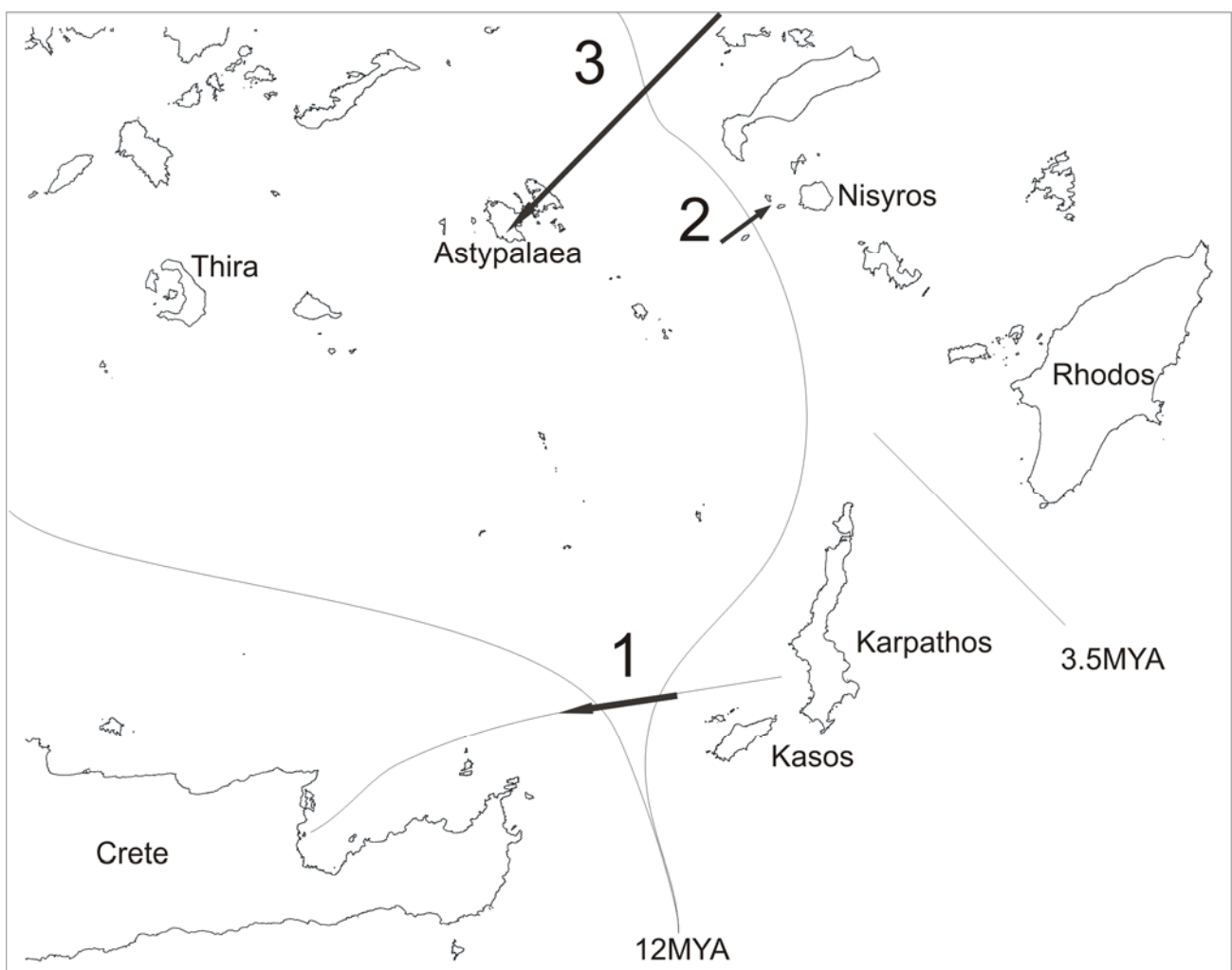
#### *The outlier*

The last category includes a single animal, *Mauremys rivulata*, for which the MAT is practically non-existent. This is an indirect indication of the efficiency of sea as a barrier for land taxa, whereas a reptile not strictly bounded by sea water barriers apparently ignores it. It is worth noting the difference of the pattern exhibited by *M. rivulata* with the one of another terrapin, *Emys orbicularis*. The phylogenetic relationships of the latter appear geographically structured with higher diversity in south areas of its distribution [54]. Unlike *Mauremys*, which is commonly found in marginal and often temporary wetlands, *Emys* (although tolerant of brackish waters) prefers large permanent water bodies. This point is supported by the difference in the two species’ distributions: *Mauremys* is “restricted” to coastal east Mediterranean areas whereas *Emys* is widely distributed throughout Europe, excluding small islands and even some big ones as Crete. In other words, being a terrapin is not sufficient to overlook the sea as a barrier. The pattern of *Emys* is more similar to the case of *Pelophylax* than to its more closely related *Mauremys*.

#### *Exceptions*

There are three well documented cases of species that have crossed the MAT by dispersal, most probably not human induced (Figure 11).

**Figure 11.** Three cases of documented MAT crossings. 1. *Ablepharus* crossed from the Kasos–Karpathos complex to a tiny (4.4 ha) islet in the bay of Ag. Nikolaos, Crete. Although an explanation involving rafting appears to be most probable, it is strange how the rafts “missed” Crete or other larger islets. It is equally difficult to explain how another islet in the same bay with an area of 35 ha, less than 50m from the first, has not been invaded. 2. *Podarcis erhardii* crossed the MAT towards a couple of volcanic islets west of Nisyros, most probably from an equally small nearby islet west of the trench. 3. One of the few remaining small wetlands in the Cyclades is located on the south part of Astypalaea. It is inhabited by a population of *Pelophylax bedriagae* with phylogenetic affiliation to populations found in the northern Aegean and northern Turkey [21] and not as one intuitively would have thought from nearby central-western Turkey or Rhodos.



All three successful crossings of the MAT have been realized in the southern Aegean. In cases 1 and 2 the host-islands had a single lizard (*C. kotschyi*) prior to the newcomers. Astypalaea’s only Anuran inhabitant is *P. bedriagae*. The islands, being void from potential competitors, renders them susceptible to successful invasions. This point is most obvious in the second case described. The two potential invaders do not coexist on any island: *Podarcis erhardii* is largely distributed west of the MAT and *Ophisops elegans* on practically all eastern Aegean islands. It was only a matter of luck that *Podarcis* made it first to the two small islets. In any case, we consider these cases as true exceptions



regarding single crossings of the MAT as opposed to the erratic dispersal of *M. rivulata* an animal less hindered by sea.

One more point worth noting from the examples of exceptions is the effect that random events may have a significant impact, especially for smaller islands and islets. Islands and islets may have several species or their entire faunas wiped out by extreme conditions (e.g., storms or tsunamis); the forming of the new ecosystem is often defined by who makes it there first (see also [55]).

### 3.3. What about Other Organisms?

In all cases studied with one exception (see below), animals and plants appear to follow the patterns described above. Specifically, land snails of the genus *Mastus* [56] scorpions of the genus *Mesobuthus* [57] terrestrial isopoda of the genera *Ligidium* [58] and *Orthometopon* [59] cave crickets of the genus *Dolichopoda* [60] as well as *Nigella arvensis* of the plant family Ranunculaceae [61] are shown to have populations geographically structured and differentiated in concordance with the barriers discussed, falling into one of the three basic patterns described (see also [62]).

The exception mentioned is described in the work of Papadopoulou and coworkers [63]. One of the points made regard the darkling beetle *Eutagenia smyrnensis*. Phylogenetic analyses of Aegean populations of this species produce two distinct mt DNA lineages. The latter suggests need for taxonomic revision, hence the authors refer to the species as the “species complex *E. smyrnensis sensu lato*”. What is interesting is that the two lineages correspond to animals with clearly distinct ecological preferences: one group includes animals found on stable soil and the other to animals found on sandy beaches. Going one step further into the two phylogenetic clades, the stable surface group appears geographically structured, and similarly to the other cases discussed, restricted by the barriers shown in Figure 3. The second (sand dwelling) clade, however, has a feeble geographical structure where populations east and west of the MAT appear together in some subclades. The authors suggest that dispersal rates and hence gene flow among populations are lower in the more stable compared to the less stable habitats. Therefore, sand-inhabiting darkling beetles are subject to selection for a higher migration rate.

From the patterns proposed, the case sand of dwelling *Eutagenia* is similar to the ones regarding animals which cross the MAT, namely *M. rivulata* (random crossings) and the “exceptions” (single crossings). Despite being a terrestrial animal, sand dwelling *Eutagenia*’s pattern resembles the one of *M. rivulata* i.e., not bounded by sea.

### 3.4. Vicariance vs. Dispersal

In the cases discussed, one may find typical examples of vicariance (e.g., *Ophiomorus*) or dispersal (e.g., *Malpolon*) as the causal factor for the distribution observed. However, in most cases both factors come in play. We consider that the extent that the one or the other will dominate is not genetically or otherwise inherent but largely dependent on the physical and biological background of the time it occurs.

### 3.5. Pre vs. Post Quaternary Differentiation and Quaternary Refugia

In reality this is not a true dilemma. Organisms “carry” their history, which in some cases may be reconstructed. In several cases discussed we may discern pre-Quaternary events, most prominent of which is the Messinian crisis, as the time of differentiation of several taxa recognized today at the species level. However we do not treat this simplistically as a case of “biogeographical provensialism” (see discussion in [64]). We usually regard the Messinian crisis as a phenomenon which desiccated the Mediterranean and associate it to tectonics. The events during this period were much more complex involving successive flooding and desiccation as well as climatic changes [2,65]. The triggering of speciation via joining of landmasses or vicariant events may have been enhanced by the coupling with these phenomena.

However, contemporary distributions have largely been shaped during the Quaternary, and more specifically, may be attributed to the climatic oscillations that occurred throughout its duration [66,67]. The changes in distributions due to climate changes have also caused, or at least triggered, speciation events, as well through repeated allopatry [25] after periods of redistribution of the genetic information already present among populations in refugia [22,51]. These speciation events are at various phases *i.e.*, from clear-cut, to incipient species and finally to marginal populations which have initiated divergence (morphological and/or molecular) from their “maternal” one. A similar situation is found in central European taxa [22].

Many authors *e.g.*, [25,51] as well as the cases presented, warn against a simplistic consideration of refugia. Their locations are determined by complex historical and environmental factors, the cumulative effects of which need to be considered because they have occurred since the Tertiary, rather than solely during the last glacial period [68]. Moreover, we should keep an open mind about the role of refugia apart from on the Mediterranean peninsulas or near the sea as discussed in *e.g.*, [25,69] and suggested in other works [4,21]. Additionally, proposed refugia should be critically and case-by-case assessed as what is a refuge for one species is not necessarily for another. Finally, however scarce [37], the fossil evidence is an irreplaceable failsafe for controlling proposed phylogenetic histories.

### 3.6. General Trends

The main distribution patterns in the Aegean are related to geological time. The “ancients” group consists only of Palaearctic animals, whereas in the other cases African animals are involved as well. Nevertheless, the general patterns are general insofar as we observe them at a broad scale. Each group studied has its peculiarities in what regards the routes followed, refugia (and microrefugia) they originated from, mechanisms involved (*i.e.*, vicariant, dispersal) and degree of differentiation. This view appears consistent with the perspective given by Benton [70] *i.e.*, predominance of abiotic factors at large temporal and geographical scales whereas at smaller scales biotic interactions may be more important.

Key dates appear to be the initiation of the MAT split (12 MYA), as well as its ending (9 MYA), the Messinian crisis (5 MYA), climate oscillations during the Pleistocene (where however the last glacial maximum has been disproportionately better investigated) and finally the Holocene when

modern humans came into the picture, causing massive ecosystem alterations, voluntary and involuntary animal introductions.

Pre-Quaternary geomorphological rearrangements at the respective times (MAT, separation of Crete) efficiently blocked dispersal in most cases of terrestrial herpetofauna. During the Quaternary, climate alterations caused consecutive distributional rearrangements, but species still remained within the boundaries created earlier by tectonics. The efficiency of the barriers may have been enhanced by the differentiation and organization of local faunal communities in the “host” areas. Some species, however, when carried by humans much later did not appear to have problems with the crossing of local or much larger barriers (e.g., from Africa to Europe). Last but not least, stochastic events may have a significant impact especially on smaller islands and islets. A general view on Aegean’s biodiversity, largely consistent with the major points made here is supported in [62].

### 3.7. Diversity

The backbone of the present work is nothing else than a list of taxa. This first level of diversity (taxonomic) may be unfolded and expanded in several dimensions revealing sources of diversity and interactions among them: Diversity in geological processes, geomorphology, faunal origins, climate, biological assemblages including their interactions and a special case of the latter, human activities.

We approach all the above parameters and many more in the search of causal factors that may explain the taxonomic diversity. Our quest focuses on which evolutionary mechanisms are affected by each of the factors mentioned above. When discussing here for example vicariance *versus* dispersal, or pre *versus* post quaternary differentiation, we invoke different evolutionary mechanisms to account for the diversity observed. But we have not directly discussed the relation of evolution and diversity.

Even though rarely stated explicitly, the prevailing view on the relation between evolution and diversity is that “Evolution begets Diversity”. But could it be the other way around? After all, there is no evolution without diversity. Is it legitimate to say that diversity begets evolution? Or could it be that both statements are true, simultaneously bonding Evolution and Diversity in a dialectical relationship? And if this is true, how would it alter our approaches in biology? For example, how would a conservationist define biodiversity? Or on a completely different line, how would it affect the study of artificial intelligence or other complex (=diverse?) systems such as economy? Moreover, what would be the impact on broader biological manifestations, e.g., science, art or politics? This is not a paper on philosophy, and in any case is not here to deal with such questions. However, intrigued by the biodiversity described, we wondered about Diversity as a broader quality, in line with the very need that led to a dedicated publication [52]. We include this last paragraph to highlight the lack of theoretical exploration of this notion, which we believe is important to address.

### Acknowledgements

We wish to thank K. Triantis for his kind invitation to contribute to this special issue. We wish to thank four anonymous reviewers whose comments and ideas greatly improved the initial text. We also thank G. Iliopoulos for checking sections on geology and T. Pinou for reviewing English.

## References

1. Tibaldi, A.; Pasquare, F.A.; Papanikolaou, D.; Nomikou, P. Tectonics of Nisyros Island, Greece, by field and offshore data, and analogue modelling. *J. Struct. Geol.* **2008**, *30*, 1489-1506.
2. Krijgsman, W.; Hilgen, F.J.; Raffi, I.; Sierro, F.J.; Wilson, D.S. Chronology, causes and progression of the Messinian salinity crisis. *Nature* **1999**, *400*, 652-655.
3. Steininger, F.F.; Rögl, F. Paleogeography and palinspastic reconstruction of the Neogene of the Mediterranean and Paratethys. In *The Geological Evolution of the Eastern Mediterranean*; Dixon, J. E., Robertson, A.H.F., Eds.; Blackwell Scientific Publications: Malden, MA, USA, 1984; pp. 659-668.
4. Poulakakis, N.; Lymberakis, P.; Valakos, E.; Pafilis, P.; Zouros, E.; Mylonas, M. Phylogeography of Balkan wall lizard (*Podarcis taurica*) and its relatives inferred from mitochondrial DNA sequences. *Mol. Ecol.* **2005**, *14*, 2433-2443.
5. Tzedakis, P.C. Seven ambiguities in the Mediterranean palaeoenvironmental narrative. *Quaternary Sci. Rev.* **2007**, *26*, 2042-2066.
6. Knapp, A.B.; Blake, E. Prehistory in the Mediterranean: The connecting and corrupting sea. In *The Archaeology of Mediterranean Prehistory*; Blake, E., Knapp, A.B., Eds.; Blackwell: Malden, MA, USA, 2005; pp. 7-22.
7. Carbonell, E.; Rodríguez, X.P. The first human settlement of Mediterranean Europe. *C.R. Palevol.* **2006**, *5*, 291-298.
8. De Betta, E. I Rettili ed Anfibi della Grecia. *Morelli, operette* **1868**, *1*, 876-963.
9. Bedriaga, V.J. Die Amphibien und Reptilien Griechenlands (Amphibia). *Bul. Soc. Imp. Nat. Mos.* **1882**, *56*, 243-310.
10. Bedriaga, V.J. Die Amphibien und Reptilien Griechenlands (Ophidia, Chelonia). *Bul. Soc. Imp. Nat. Mos.* **1882**, *56*, 278-344.
11. Bedriaga, V.J. Die Amphibien und Reptilien Griechenlands (Reptilia, Sauria). *Bul. Soc. Imp. Nat. Mos.* **1882**, *56*, 43-103.
12. Werner, F. Contribution to the knowledge of the Reptiles and Amphibians of Greece, especially the Aegean islands. *Occ. Pap. Mus. Zool. Univ. Michigan, Ann Arbor* **1930**, *211*, 1-47.
13. Cyren, O. Zur Herpetologie der Balkanhalbinsel. *Mit. Kgl. naturw. Inst. Sofia* **1941**, *14*, 36-152.
14. Wettstein, O.V. Herpetologia Aegaea. *Sber. Österr. Akad. Wiss., math.-naturw. Kl., Wien* **1953**, *162*, 651-833.
15. Lymberakis, P.; Poulakakis, N.; Kaliontzopotilou, A.; Valakos, E.; Mylonas, M. Two new species of *Podarcis* (Squamata: Lacertidae) from Greece. *Syst. Biodivers.* **2008**, *6*, 307-318.
16. Poulakakis, N.; Lymberakis, P.; Antoniou, A.; Chalkia, D.; Zouros, E.; Mylonas, M.; Valakos, E. Molecular phylogeny and biogeography of the wall-lizard *Podarcis erhardii* (Squamata: Lacertidae). *Mol. Phylogenet. Evol.* **2003**, *28*, 38-46.
17. Poulakakis, N.; Lymberakis, P.; Valakos, E.; Zouros, E.; Mylonas, M. Phylogenetic relationships and biogeography of *Podarcis* species from the Balkan Peninsula, by Bayesian and maximum likelihood analyses of mitochondrial DNA sequences. *Mol. Phylogenet. Evol.* **2005**, *37*, 845-857.

18. Arnold, E.N.; Arribas, O.; Carranza, S. Systematics of the Palearctic and Oriental lizard tribe Lacertini (Squamata: Lacertidae: Lacertinae), with descriptions of eight new genera. *Zootaxa* **2007**, *1430*, 3-86.
19. Kyriazi, P.; Poulakakis, N.; Parmakelis, A.; Crochet, P.A.; Moravec, J.; Rastegar-Pouyani, N.; Tsigenopoulos, C.S.; Magoulas, A.; Mylonas, M.; Lymberakis, P. Mitochondrial DNA reveals the genealogical history of the snake-eyed lizards (*Ophisops elegans* and *O. occidentalis*) (Sauria: Lacertidae). *Mol. Phylogenet. Evol.* **2008**, *49*, 795-805.
20. Perissoratis, C.; Conispoliatis, N. The impacts of sea-level changes during latest Pleistocene and Holocene times on the morphology of the Ionian and Aegean seas (SE Alpine Europe). *Mar. Geol.* **2003**, *196*, 145-156.
21. Lymberakis, P.; Poulakakis, N.; Manthalou, G.; Tsigenopoulos, C.S.; Magoulas, A.; Mylonas, M. Mitochondrial phylogeography of *Rana* (*Pelophylax*) populations in the Eastern Mediterranean region. *Mol. Phylogenet. Evol.* **2007**, *44*, 115-125.
22. Joger, U.; Fritz, U.; Guicking, D.; Kalyabina-Hauf, S.; Nagy, Z.T.; Wink, M. Phylogeography of western Palearctic reptiles—Spatial and temporal speciation patterns. *Zool. Anz.* **2007**, *246*, 293-313.
23. Sotiropoulos, K.; Eleftherakos, K.; Dzukic, G.; Kalezic, M.L.; Legakis, A.; Polymeni, R.M. Phylogeny and biogeography of the alpine newt *Mesotriton alpestris* (Salamandridae, Caudata), inferred from mtDNA sequences. *Mol. Phylogenet. Evol.* **2007**, *45*, 211-226.
24. Stoek, M.; Moritz, C.; Hickerson, M.; Frynta, D.; Dujsebayeva, T.; Eremchenko, V.; Macey, J.R.; Papenfuss, T.J.; Wake, D.B. Evolution of mitochondrial relationships and biogeography of Palearctic green toads (*Bufo viridis* subgroup) with insights in their genomic plasticity. *Mol. Phylogenet. Evol.* **2006**, *41*, 663-689.
25. Hewitt, G.M. Genetic consequences of climatic oscillations in the Quaternary. *Philos. T. Roy. Soc. B* **2004**, *359*, 183-195.
26. Stoek, M.; Dubey, S.; Klutsch, C.; Litvinchuk, S.N.; Scheidt, U.; Perrin, N. Mitochondrial and nuclear phylogeny of circum-Mediterranean tree frogs from the *Hyla arborea* group. *Mol. Phylogenet. Evol.* **2008**, *49*, 1019-1024.
27. Weisrock, D.W.; Macey, J.R.; Ugurtas, I.H.; Larson, A.; Papenfuss, T.J. Molecular phylogenetics and historical biogeography among salamandrids of the "true" salamander clade: Rapid branching of numerous highly divergent lineages in *Mertensiella luschni* associated with the rise of Anatolia. *Mol. Phylogenet. Evol.* **2001**, *18*, 434-448.
28. Steinfartz, S.; Veith, M.; Tautz, D. Mitochondrial sequence analysis of *Salamandra* taxa suggests old splits of major lineages and postglacial recolonizations of Central Europe from distinct source populations of *Salamandra salamandra*. *Mol. Ecol.* **2000**, *9*, 397-410.
29. Veith, M.; Lipscher, E.; Oz, M.; Kiefer, A.; Baran, I.; Polymeni, R.M.; Steinfartz, S. Cracking the nut: Geographical adjacency of sister taxa supports vicariance in a polytomic salamander clade in the absence of node support. *Mol. Phylogenet. Evol.* **2008**, *47*, 916-931.
30. Weisrock, D.W.; Papenfuss, T.J.; Macey, J.R.; Litvinchuk, S.N.; Polymeni, R.; Ugurtas, I.H.; Zhao, E.; Jowkar, H.; Larson, A. A molecular assessment of phylogenetic relationships and lineage accumulation rates within the family Salamandridae (Amphibia, Caudata). *Mol. Phylogenet. Evol.* **2006**, *41*, 368-383.

31. Poulakakis, N.; Lymberakis, P.; Tsigenopoulos, C.S.; Magoulas, A.; Mylonas, M. Phylogenetic relationships and evolutionary history of snake-eyed skink *Ablepharus kitaibelii* (Sauria: Scincidae). *Mol. Phylogenet. Evol.* **2005**, *34*, 245-256.
32. Poulakakis, N.; Pakaki, V.; Mylonas, M.; Lymberakis, P. Molecular phylogeny of the Greek legless skink *Ophiomorus punctatissimus* (Squamata: Scincidae): The impact of the Mid-Aegean trench in its phylogeography. *Mol. Phylogenet. Evol.* **2008**, *47*, 396-402.
33. Kasapidis, P.; Magoulas, A.; Mylonas, M.; Zouros, E. The phylogeography of the gecko *Cyrtopodion kotschy* (Reptilia: Gekkonidae) in the Aegean archipelago. *Mol. Phylogenet. Evol.* **2005**, *35*, 612-623.
34. Guicking, D.; Joger, U.; Wink, M. Cryptic diversity in a Eurasian water snake (*Natrix tessellata*, Serpentes: Colubridae): Evidence from mitochondrial sequence data and nuclear ISSR-PCR fingerprinting. *Org. Divers. Evol.* **2009**, *9*, 201-214.
35. Harris, D.J.; Batista, V.; Lymberakis, P.; Carretero, M.A. Complex estimates of evolutionary relationships in *Tarentola mauritanica* (Reptilia: Gekkonidae) derived from mitochondrial DNA sequences. *Mol. Phylogenet. Evol.* **2004**, *30*, 855-859.
36. Carranza, S.; Arnold, E.N. Systematics, biogeography, and evolution of *Hemidactylus* geckos (Reptilia: Gekkonidae) elucidated using mitochondrial DNA sequences. *Mol. Phylogenet. Evol.* **2006**, *38*, 531-545.
37. Corti, C.; Masseti, M.; Delfino, M.; Perez-Mellado, V. Man and herpetofauna of the mediterranean islands. *Rev. Esp. Herp.* **1999**, *13*, 83-100.
38. Kornilios, P.; Kyriazi, P.; Poulakakis, N.; Kumlutas, Y.; Ilgaz, H.; Mylonas, M.; Lymberakis, P. Phylogeography of the ocellated skink *Chalcides ocellatus* (Squamata, Scincidae), with the use of mtDNA sequences: A hitch-hiker's guide to the Mediterranean. *Mol. Phylogenet. Evol.* **2010**, *54*, 445-456.
39. Utiger, U.; Schatti, B. Morphology and phylogenetic relationships of the Cyprus racer, *Hierophis cypriensis*, and the systematic status of *Coluber gemonensis gyarosensis* Mertens (Reptilia: Squamata: Colubrinae). *Rev. Suisse Zool.* **2004**, *111*, 225-238.
40. Lenk, P.; Kalyabina, S.; Wink, M.; Joger, U. Evolutionary relationships among the true vipers (Reptilia: viperidae) inferred from mitochondrial DNA sequences. *Mol. Phylogenet. Evol.* **2001**, *19*, 94-104.
41. Ursenbacher, S.; Schweiger, S.; Tomovic, L.; Crnobrnja-Isailovic, J.; Fumagalli, L.; Mayer, W. Molecular phylogeography of the nose-horned viper (*Vipera ammodytes*, Linnaeus (1758)): Evidence for high genetic diversity and multiple refugia in the Balkan peninsula. *Mol. Phylogenet. Evol.* **2008**, *46*, 1116-1128.
42. Wuster, W.; Peppin, L.; Pook, C.E.; Walker, D.E. A nesting of vipers: Phylogeny and historical biogeography of the Viperidae (Squamata: Serpentes). *Mol. Phylogenet. Evol.* **2008**, *49*, 445-459.
43. Herremann, W.-H.; Joger, U.; Nilson, G. Phylogeny and systematics of viperine snakes. III: resurrection of the genus *Macrovipera* (Reuss, 1927) as suggested by biochemical evidence. *Amphibia-Reptilia* **1992**, *13*, 375-392.
44. Nilson, G.; Andren, C.; Flaerdh, B. *Vipera albizona*, an new mountain viper from central Turkey, with comments on isolating effects of the Anatolian "Diagonal". *Amphibia-Reptilia* **1990**, *11*, 285-294.

45. Carranza, S.; Arnold, E.N.; Pleguezuelos, J.M. Phylogeny, biogeography, and evolution of two Mediterranean snakes, *Malpolon monspessulanus* and *Hemorrhois hippocrepis* (Squamata, Colubridae), using mtDNA sequences. *Mol. Phylogenet. Evol.* **2006**, *40*, 532-546.
46. Mantziou, G.; Poulakakis, N.; Lymberakis, P.; Valakos, E.; Mylonas, M. The inter- and intraspecific status of Aegean *Mauremys rivulata* (Chelonia, Bataguridae) as inferred by mitochondrial DNA sequences. *Herpetol. J.* **2004**, *14*, 35-45.
47. Kuehnelt, W. Characteristic distribution patterns of Greek animals. *Biol. Gallo-Hellenica* **1978**, *8*, 17-22.
48. Odling-Smee, F.J.; Laland, K.N.; Feldman, M.W. *Niche Construction: The Neglected Process in Evolution*; Princeton University Press: Princeton, NJ, USA, 2003.
49. Benton, M.J.; Emerson, B.C. How did life become so diverse? The dynamics of diversification according to the fossil record and molecular phylogenetics. *Palaeontology* **2007**, *50*, 23-40.
50. Darwin, C. Natural Selection. In *The Origin of Species by Means of Natural Selection*; 6th ed.; Murray: London, UK, 1859; pp. 62-105.
51. Petit, R.J.; Aguinalalde, I.; de Beaulieu, J.L.; Bittkau, C.; Brewer, S.; Cheddadi, R.; Ennos, R.; Fineschi, S.; Grivet, D.; Lascoux, M.; Mohanty, A.; Muller-Starck, G.M.; Demesure-Musch, B.; Palme, A.; Martin, J.P.; Rendell, S.; Vendramin, G.G. Glacial refugia: Hotspots but not melting pots of genetic diversity. *Science* **2003**, *300*, 1563-1565.
52. Wink, M. Towards a better understanding of diversity. *Diversity* **2009**, *1*, 1-4.
53. Caloi, P.L.; Kotsakis, A.; Palombo, M.R. La fauna a vertebrati terrestri del Pleistocene delle isole del Mediterraneo. *B. Ecol.* **1988**, *19*, 131-151.
54. Fritz, U.; Guicking, D.; Kami, H.; Arakelyan, M.; Auer, M.; Ayaz, D.; Fernandez, C.A.; Bakiev, A.G.; Celani, A.; Dzukic, G.; Falid, S.; Havas, P.; Joger, U.; Khabibullin, V.F.; Mazanaeva, L.F.; Siroky, P.; Tripepi, S.; Velez, A.V.; Anton, G.V.; Wink, M. Mitochondrial phylogeography of European pond turtles (*Emys orbicularis*, *Emys trinacris*)—an update. *Amphibia-Reptilia* **2007**, *28*, 418-426.
55. Panitsa, M.; Tzanoudakis, D.; Triantis, K.A.; Sfenthourakis, S. Patterns of species richness on very small islands: the plants of the Aegean archipelago. *J. Biogeogr.* **2006**, *33*, 1223-1234.
56. Parmakelis, A.; Pfenninger, M.; Spanos, L.; Papagiannakis, G.; Louis, C.; Mylonas, M. Inference of a radiation in *Mastus* (gastropoda, pulmonata, enidae) on the island of Crete. *Evolution* **2005**, *59*, 991-1005.
57. Parmakelis, A.; Stathi, I.; Chatzaki, M.; Simaiakis, S.; Spanos, L.; Louis, C.; Mylonas, M. Evolution of *Mesobuthus gibbosus* (Brulle, 1832) (Scorpiones: Buthidae) in the northeastern Mediterranean region. *Mol. Ecol.* **2006**, *15*, 2883-2894.
58. Klossa-Kilia, E.; Kiliak, G.; Tryfonopoulos, G.; Koukou, K.; Spyros, S.; Parmakelis, A. Molecular phylogeny of the Greek populations of the genus *Ligidium* (Isopoda, Oniscidea) using three mtDNA gene segments. *Zool. Scr.* **2006**, *35*, 459-472.
59. Poulakakis, N.; Sfenthourakis, S. Molecular phylogeny and phylogeography of the Greek populations of the genus *Orthometopon* (Isopoda, Oniscidea) based on mitochondrial DNA sequences. *Zool. J. Linn. Soc.-Lond.* **2008**, *152*, 707-715.



60. Allegrucci, G.; Rampini, M.; Gratton, P.; Todisco, V.; Sbordoni, V. Testing phylogenetic hypotheses for reconstructing the evolutionary history of *Dolichopoda* cave crickets in the eastern Mediterranean. *J. Biogeogr.* **2009**, *36*, 1785-1797.
61. Bittkau, C.; Comes, H.P. Evolutionary processes in a continental island system: molecular phylogeography of the Aegean *Nigella arvensis* alliance (Ranunculaceae) inferred from chloroplast DNA. *Mol. Ecol.* **2005**, *14*, 4065-4083.
62. Triantis, K.; Mylonas, M. Greek Islands, Biology. In *Encyclopedia of Islands*; Gillespie, R., Glague, D.A., Eds.; University of California Press: Berkeley, CA, USA, 2009; pp. 388-392.
63. Papadopoulou, A.; Anastasiou, I.; Keskin, B.; Vogler, A.P. Comparative phylogeography of tenebrionid beetles in the Aegean archipelago: the effect of dispersal ability and habitat preference. *Mol. Ecol.* **2009**, *18*, 2503-2517.
64. Standish, R.K. Diversity Evolution. In *Proceedings of the Eighth International Conference on Artificial Life*; Standish, R.K., Bedau, M.A., Abbass, H.A., Eds.; MIT press: Cambridge, MA, USA, 2002; pp. 131-137.
65. Hsu, K.J.; Montadert, L.; Bernoulli, D.; Biancacita, M.; Erickson, A.; Garrison, R.E.; Kidd, R.B.; Melieres, F.; Muller, C.; Wright, R. History of Mediterranean salinity crisis. *Nature* **1977**, *267*, 399-403.
66. Araujo, M.B.; Nogues-Bravo, D.; Diniz-Filho, J.A.F.; Haywood, A.M.; Valdes, P.J.; Rahbek, C. Quaternary climate changes explain diversity among reptiles and amphibians. *Ecography* **2008**, *31*, 8-15.
67. Taberlet, P.; Fumagalli, L.; Wust-Saucy, A.G.; Cosson, J.F. Comparative phylogeography and postglacial colonization routes in Europe. *Mol. Ecol.* **1998**, *7*, 453-464.
68. Medail, F.; Diadema, K. Glacial refugia influence plant diversity patterns in the Mediterranean Basin. *J. Biogeogr.* **2009**, *36*, 1333-1345.
69. Kotlik, P.; Deffontaine, V.; Mascheretti, S.; Zima, J.; Michaux, J.R.; Searle, J.B. A northern glacial refugium for bank voles (*Clethrionomys glareolus*). *P. Nat. Acad. Sci. USA* **2006**, *103*, 14860-14864.
70. Benton, M.J. The Red Queen and the Court Jester: Species Diversity and the Role of Biotic and Abiotic Factors Through Time. *Science* **2009**, *323*, 728-732.