

Article

New Programmable CMOS Fuzzifier and C2V Circuits Applicable in FLC Chip for Signal Processing of MEMS Glucose Sensors

Ghader Yosefi ^{1,†}, Sattar Mirzakuchaki ^{2,*} and Farshid Raissi ^{3,†}

¹ Department of Electrical Electronics Engineering, Science and Research Branch, Islamic Azad University, Tehran 14778-93855, Iran; E-Mail: gh.yosefi@srbiau.ac.ir

² Department of Electrical Electronics Engineering, Iran University of Science and Technology, Tehran 16846, Iran

³ Department of Electrical Electronics Engineering, Khaje Nasir Toosi University of Technology, Tehran 19991-43344, Iran; E-Mail: raissi@kntu.ac.ir

[†] These authors contributed equally to this work.

* Author to whom correspondence should be addressed; E-Mail: m_kuchaki@iust.ac.ir; Tel.: +98-912-340-5024; Fax: +98-21-7724-0487.

Academic Editor: Hung-Yu Wang

Received: 15 June 2015 / Accepted: 11 August 2015 / Published: 18 August 2015

Abstract: This paper presents the design and simulation of improved circuits of Fuzzifier and capacitance to voltage (C2V) converter. The Fuzzifier circuit is designed based on analog advantages such as low die area, high accuracy, and simplicity which are added to the fuzzy system advantages. For implementing this idea, a programmable Membership Function Generator (MFG) including differential pair circuit as a Fuzzifier is proposed. The MFG generates arbitrary forms of Gaussian, Trapezoidal, and Triangular shapes. The shape types are achieved using control switches and different reference voltages. This structure is also general purpose in tuning the slope of Membership Functions (MFs) using scaled transistors with different W/L ratios. With a specific purpose in mind, we used it here to generate fuzzy language terms from sensed classic data of a blood glucose microsensor. Thus we proposed a C2V circuit to convert capacitance variations (from MEMS glucose microsensor) to voltage values as classic data. The proposed mentioned circuits can be applicable in design of Fuzzy Logic Controller (FLC) chips to detect blood glucose, process its data in Fuzzy environment, and control insulin injection of diabetic patients by MEMS micropumps. The simulation results are achieved by MATLAB and

Hspice software in 0.35 μm CMOS standard technology.

Keywords: fuzzifier; membership function; differential pair; C2V; MEMS glucose microsensor; CMOS FLC chip

1. Introduction

The input data of fuzzy logic controllers (FLC) are usually crisp values that come from different nonlinear physical systems such as Micro Electro Mechanical system (MEMS) glucose microsensors. Therefore a relation is needed to calculate measure inputs or create membership function generators (MFGs). There are many MFGs in forms of voltage to voltage [1], current to current [2,3], voltage to current [4], and other methods. There are other approaches which used two sources or emitter coupled differential pairs for single membership function in bipolar or MOS technology [5,6]. However, the fuzzifier circuit presented by Wilamowski [7] is simpler and uses one differential pair per membership function, but there is a limitation to adjust the slope of MFs by changing W/L ratios manually [6,7]. So this is a fundamental problem for an architecture which is aimed to be a programmable FLC chip.

Contrary to conventional structures, our design is capable of tuning the slope of MFs and generating the Gaussian, Trapezoidal, and Triangular forms. These are achieved by changing W/L ratios of scaled transistors and choosing different reference voltages using control switches. There are 2^n states to choose arbitrary slopes and type of shapes. This architecture is general purpose for fuzzifier circuits. With a specific purpose, we applied output data of MEMS glucose microsensor to it to introduce fuzzy language terms. Obtained fuzzy data can be processed in fuzzy logic environment using fuzzy rules. Thus a suitable defuzzy (or crisp) output will be obtained to active MEMS micropumps for insulin injection [8]. Our discussion in this paper will be based on designing new and improved Fuzzifier and C2V convertor circuits. Simulation results are obtained using Hspice and Matlab software.

2. Proposed Fuzzifier Circuit

2.1. Basic Consideration

Before analyzing proposed work, let us consider a differential pair and working region to obtain suitable currents. As shown in Figure 1 and according to the [6,7], output currents for introducing MFs in midrange are given by Equation (1):

$$I_i = I_o \left[1 + \frac{1}{2} \left(\alpha_i \sqrt{2\beta_i - \alpha_i^2 \beta_i^2} - \alpha_{i+1} \sqrt{2\beta_{i+1} - \alpha_{i+1}^2 \beta_{i+2}^2} \right) \right] \quad (1)$$

While on the ends of the input range, the above equation becomes to Equation (2):

$$I_i = \frac{1}{2} I_o \left[1 + \alpha_i \sqrt{2\beta_i - \alpha_i^2 \beta_i^2} \right] \quad (2)$$

where

$$\alpha_i = \frac{V_{in} - V_{REFi}}{V_{TH}}$$

$$\beta_i = \mu C_{ox} \frac{W_i V_{TH}}{2 I_o L_i}$$

V_{in} is the input voltage, V_{REFi} 's are the reference voltages, V_{TH} is the MOS transistor threshold voltage, μC_{ox} , W_i/L_i are the parameter and size of transistors, and I_o is the constant current source.

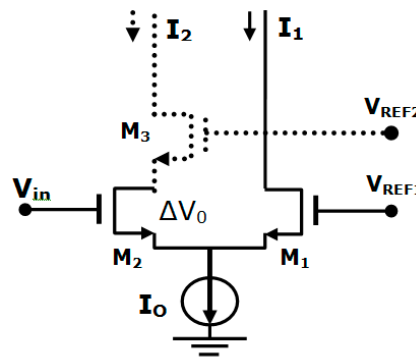


Figure 1. Differential pair circuit.

On the ends of the input range [9], this relation can be simplified without V_{TH} as Equation (3):

$$I_i = \frac{1}{2} I_o \times \left[1 + (V_{in} - V_{REFi}) \sqrt{\frac{\kappa}{I_o} - \left(\frac{\kappa}{2 I_o} \right)^2} (V_{in} - V_{REFi})^2 \right] \quad (3)$$

where

$$\kappa = \mu C_{ox} \frac{W_i}{L_i}$$

When V_{in} increases, two currents I_1 and I_2 start to descend and ascend for obtaining membership functions. According to Equation (3) and at the point where $V_{in} = V_{REFi}$, each current becomes as Equation (4):

$$I_i = I_{i+1} = \frac{1}{2} I_o \quad (4)$$

If V_{in} continues to increase then transistors M_1 and M_2 enter the cutoff and linear regions respectively. Choosing different reference voltages using control switches cause a change on currents I_1 and I_2 . Also, using different W/L ratios results in changing shape and slope of membership functions.

According to the [9] and first differential pair of Figure 1 and then using Equation (3), we can calculate the maximum of $(V_{in} - V_{REFi})$ as Equation (5):

$$\frac{\partial (V_{in} - V_{REFi})}{\partial I_i} = 0$$

$$\Rightarrow (V_{in} - V_{REFi})_{\max} = 2\sqrt{\frac{I_0}{\kappa}} = 2\sqrt{\frac{\mu C_{ox} W_i (\Delta V_0)^2}{2 \kappa L_i}} = \sqrt{2} V_0 \quad (5)$$

where:

$$\kappa = \mu C_{ox} \frac{W_i}{L_i}, \quad \Delta V_0 = V_{GS} - V_{TH}$$

Therefore the difference $\sqrt{2}\Delta V_0$ between V_{in} and V_{REFi} is needed for I_1 and I_2 to be in opposite directions, *i.e.*, if one of them is max, the other one should be minimum quantity (Figure 2). According to Figure 1, if we add transistor M_3 then the voltage of $2\sqrt{2}\Delta V_0$ is needed to have one current in maximum and the other one in minimum quantities, *i.e.*, this difference voltage is necessary between V_{REFi} and V_{REFi+1} so that: (1) transistor M_1 be in cutoff region to obtain minimum current I_1 and (2) transistor M_2 be in linear region to achieve maximum current I_2 .

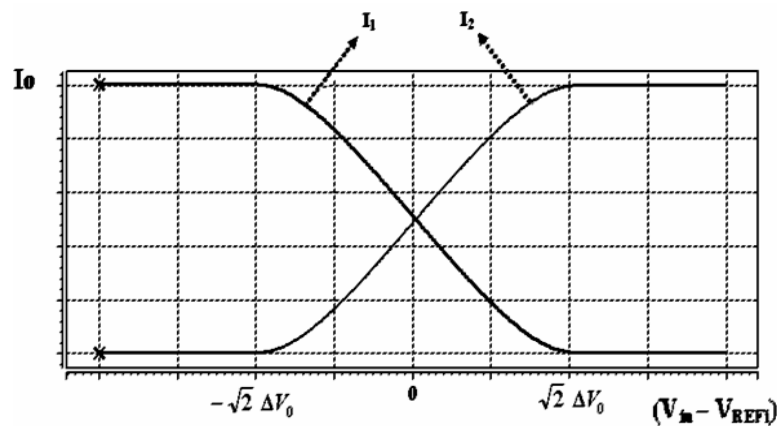


Figure 2. Drain current variation of differential pair *versus* input voltage ($V_{in} - V_{REFi}$).

The circuit of this basic approach is very flexible and includes equally spaced symmetrical and asymmetrical MFs which can be used in VLSI implementations. For these reasons made some improvements by adding scaled transistors and changing ΔV_0 's in constant current. So reduction of ΔV_0 causes the enhancement of the number of MFs which will be discussed in the next section.

2.2. Main Blocks and Circuits

The systematic blocks of proposed Fuzzifier for this purpose are shown in Figure 3. The improved work is done using differential blocks which consist of transistors that are scaled with a different coefficient of W/L 's. In the left column circuit of differential block (Figure 4) the gates of transistors are connected to (V_{in}) either together or alone via control switches. In the same manner, Figure 4 (right) shows the right circuit of differential block. The scaled transistors in any column of right blocks can be connected to the reference voltage (V_{REF}) through control switches.

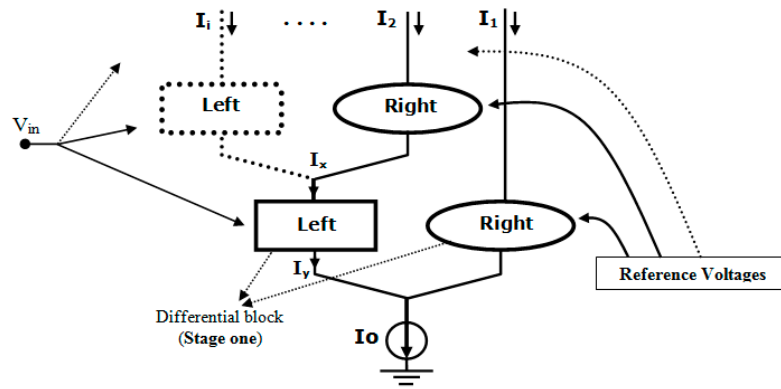


Figure 3. Main blocks.

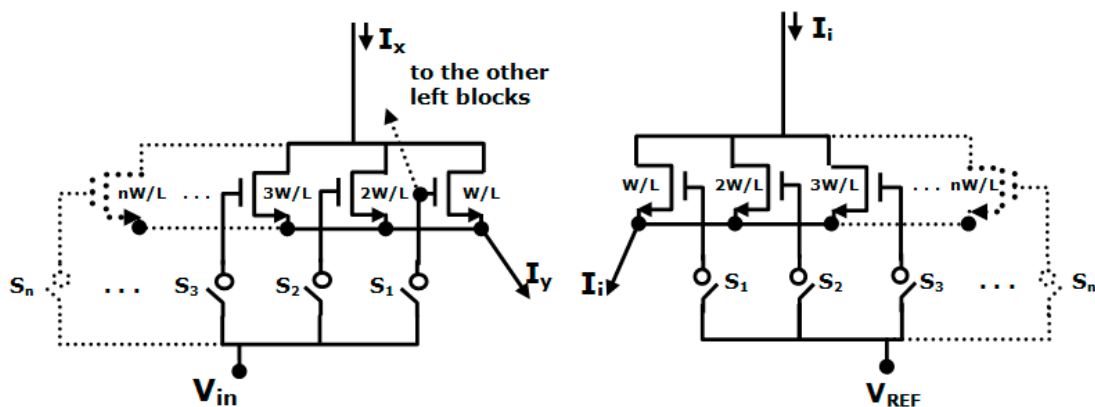


Figure 4. Left and right circuits for a differential block of fuzzifier stages.

The proposed design has basically a similar operation discussed previously. As we mentioned, increasing W/L ratio of scaled transistors cause to decrease ΔV_0 in current constant [9]. For these reasons the difference voltage of $2\sqrt{2}\Delta V_0$ between two right block_(i) and block_(i+1) would be minimal. This benefit makes it possible to use a lower power supply, high swing, and consequently more stages and numbers of MFs.

With these results and using the basic of differential pair circuit of Figures 1 and 4, the proposed Fuzzifier circuit is completed as shown in Figure 5. This circuit is capable of obtaining Gaussian membership function shapes with tuning reference voltages in least quantity ($V_{REF2} - V_{REF1} = 2\sqrt{2}\Delta V_0$).

Increasing different reference voltages and distancing them from each other, cause to have Trapezoidal shapes. Different MFs slopes can be achieved by changing transistor sizes in 1, 2, 4, and 8 W/L ratios using control switches. The Triangular membership functions are also resulted with setting different reference voltages in least quantity and using high control switches.

In contrast to conventional works [1,10–13], the proposed circuit is very simple and flexible in designing Layout (Figures 6 and 7) and processing fuzzy data, respectively. It can also generate three different shape types of equally spaced symmetrical membership functions. This work is applicable in VLSI implementations without any complexity and extra hardware.

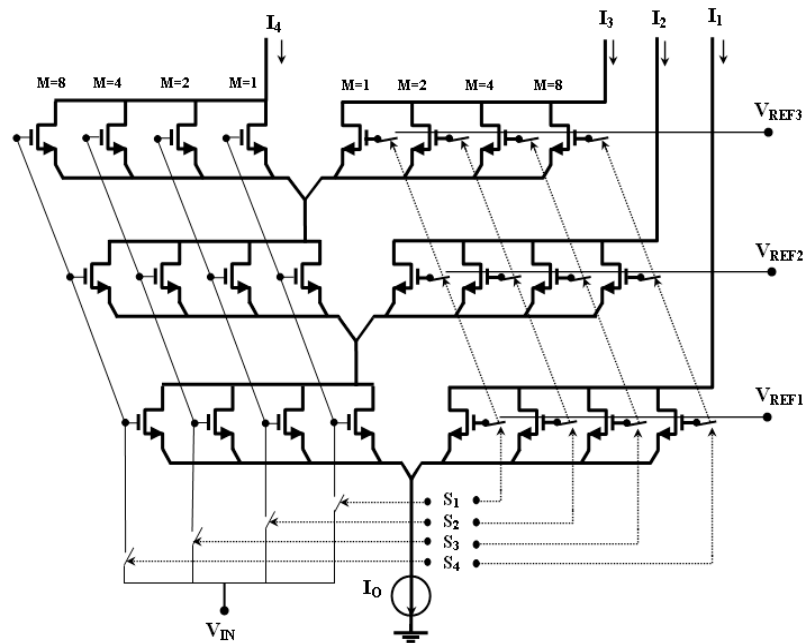


Figure 5. Proposed Fuzzifier circuit with input crisp voltage of V_{in} , reference voltages, control switches, and output fuzzy currents of I_1 to I_4 .

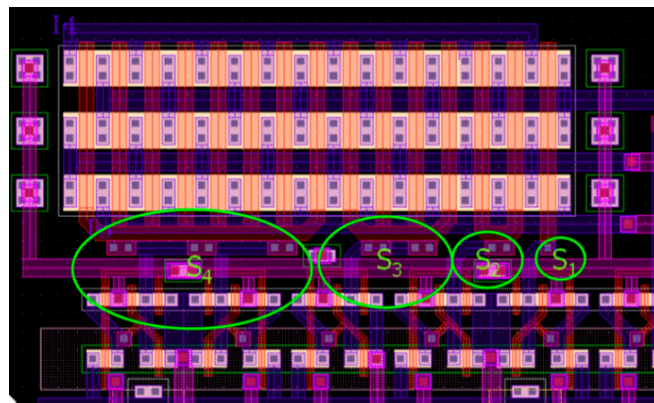


Figure 6. Layout of Fuzzifier circuit (of Figure 5 Left).

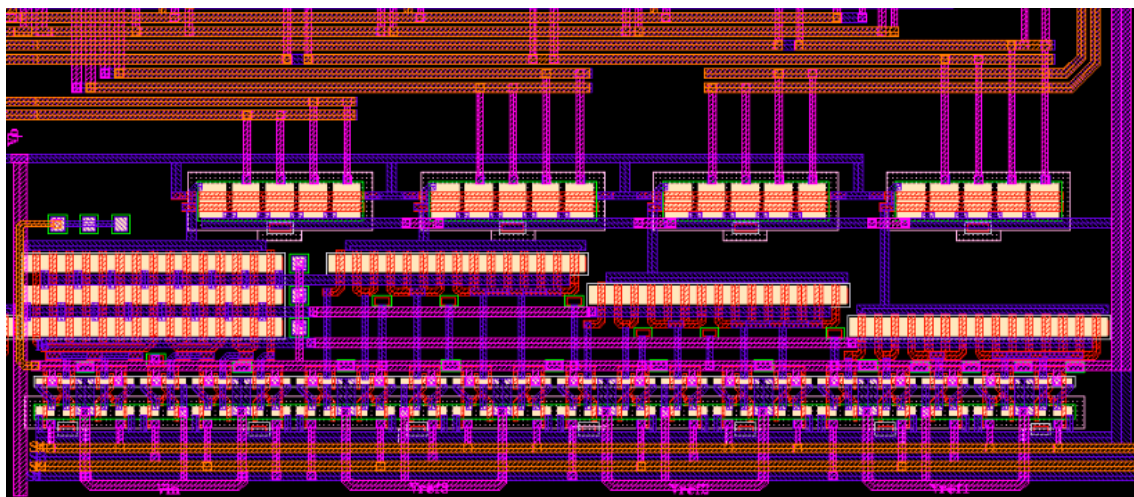


Figure 7. Layout of proposed Fuzzifier circuit (from Figure 5).

3. Simulation Results

We simulated the extracted file of circuit layout in 0.35 μm CMOS standard technology using Hspice software. The simulation results of generating Gaussian MF's and changing slopes are shown in Figures 8 and 9 respectively (For more descriptions see the figure captions). According to the previous section the Trapezoidal MFs are obtained with distancing reference voltages from each other (Figure 10). The Triangular MFs are also achieved with setting reference voltages in least quantity and using high digital data of $S_4S_3S_2S_1$ (Figure 11).

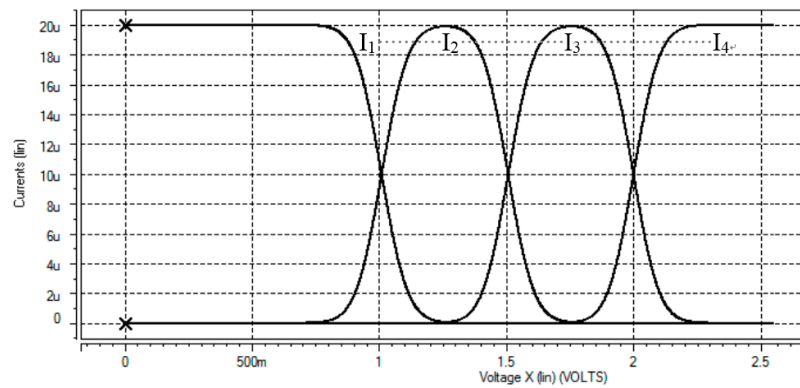


Figure 8. Gaussian membership functions with $W/L = 2/0.8$, digital data of $S_4S_3S_2S_1 = 0011$, $I_o = 21 \mu\text{A}$ and $\Delta V_o = 175 \text{ mV}$ from Figure 5.

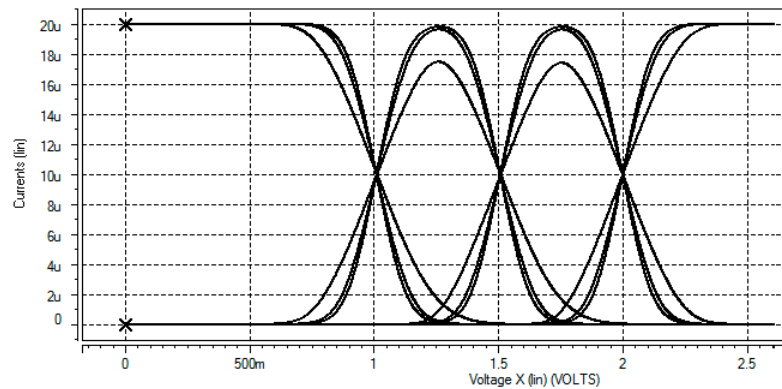


Figure 9. Changeable and increasing slope of membership functions with setting digital data of $S_4S_3S_2S_1$ in 0001, 0011, 0101 from Figure 5.

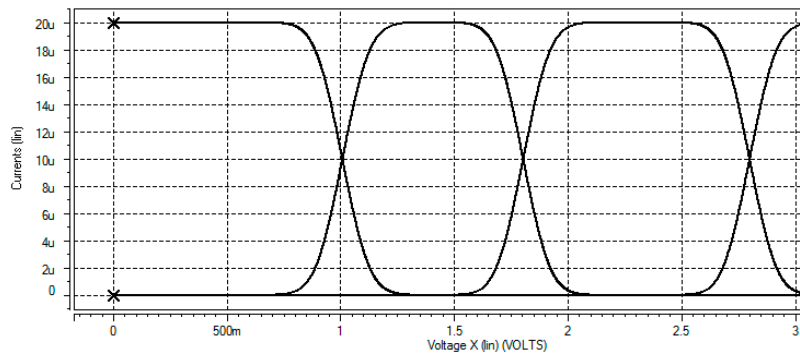


Figure 10. Trapezoidal membership functions with setting in higher voltage references and suitable digital data.

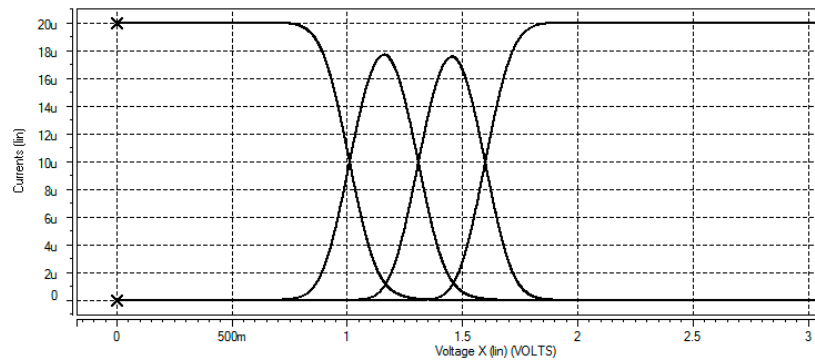


Figure 11. Triangular membership functions with setting minimum voltage reference and high digital data.

4. Proposed C2V with Application of Fuzzifier Circuit

As we know in the Fuzzifier part of the FLC, the Fuzzifier circuit is used to make the antecedents as Fuzzy currents. Hence we used the proposed Fuzzifier circuit here to convert the output signal of sensed blood glucose data to Fuzzy language terms. According to Figure 12, we previously worked on a MEMS glucose microsensor [8] which sensed the blood glucose in milli mole to capacitance variations. Thus we proposed a new circuit of capacitance to voltage (C2V) convertor as a bridge between MEMS microsensor and Fuzzifier circuit. The proposed C2V circuit is shown in Figure 13 with the following details:

- C_x is the variable capacitor which is achieved (in range of 62~380 fF) using MEMS glucose microsensor [8] with taking a sample of blood glucose (of 1~20 mM).
- C_{in} is the parasitic and Op-Amp input transistor ($W/L = 10/2$) capacitor which is equal to ~40 fF.
- C_f is the feedback capacitor with size of transistor $W/L = 25/10$ which is equal ~ 1pF (Figure 13b).
- C_L is the load capacitor plus C_{gs} of next stage transistors (Fuzzifier input).

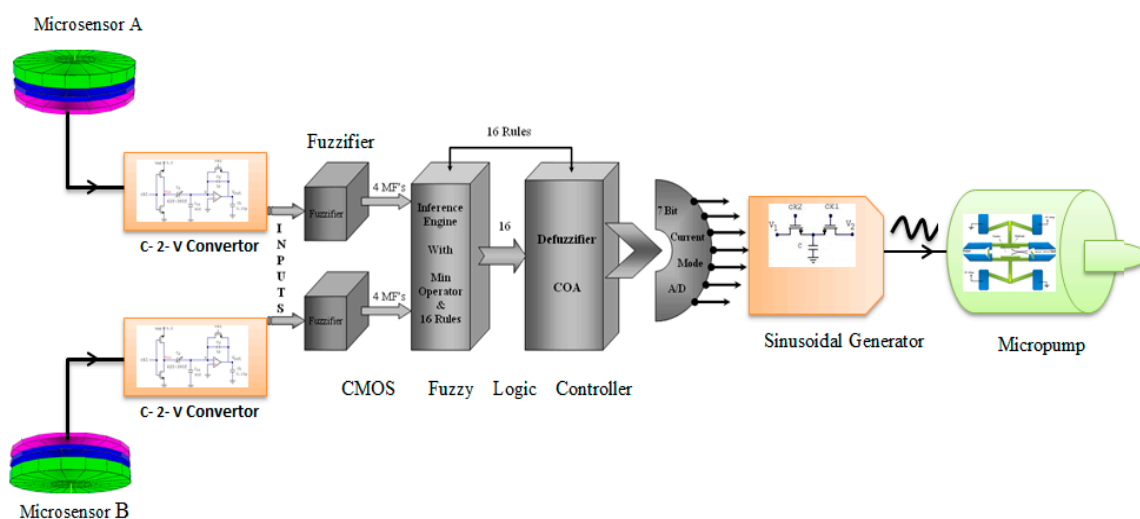


Figure 12. Intelligent sensing blood glucose and insulin injection system using MEMS Microsensor, CMOS FLC and MEMS micropump or (Sensing, Fuzzy Processing and Injecting system) [8].

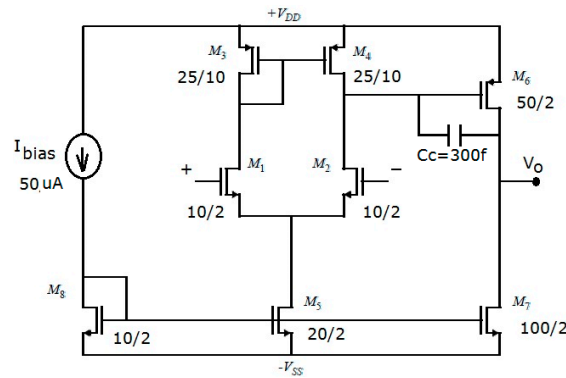


Figure 14. Two stage op-amp which designed and used in C2V circuit of Figure 13.

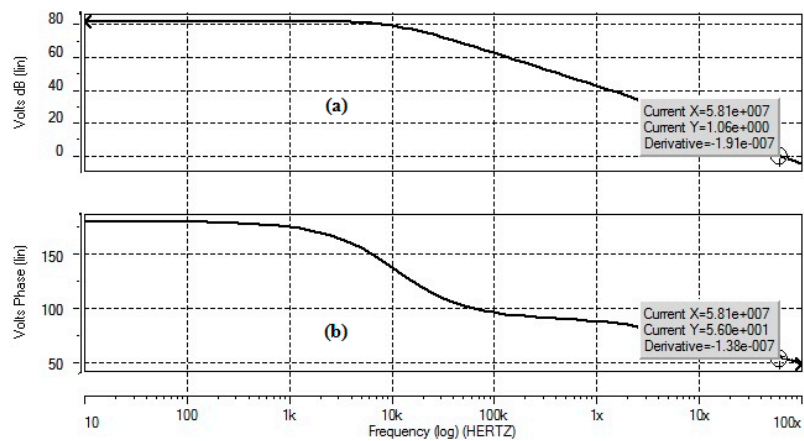


Figure 15. Simulation results of two-stage op-amp: (a) DC gain of ~83 dB; (b) phase margin of 56°.

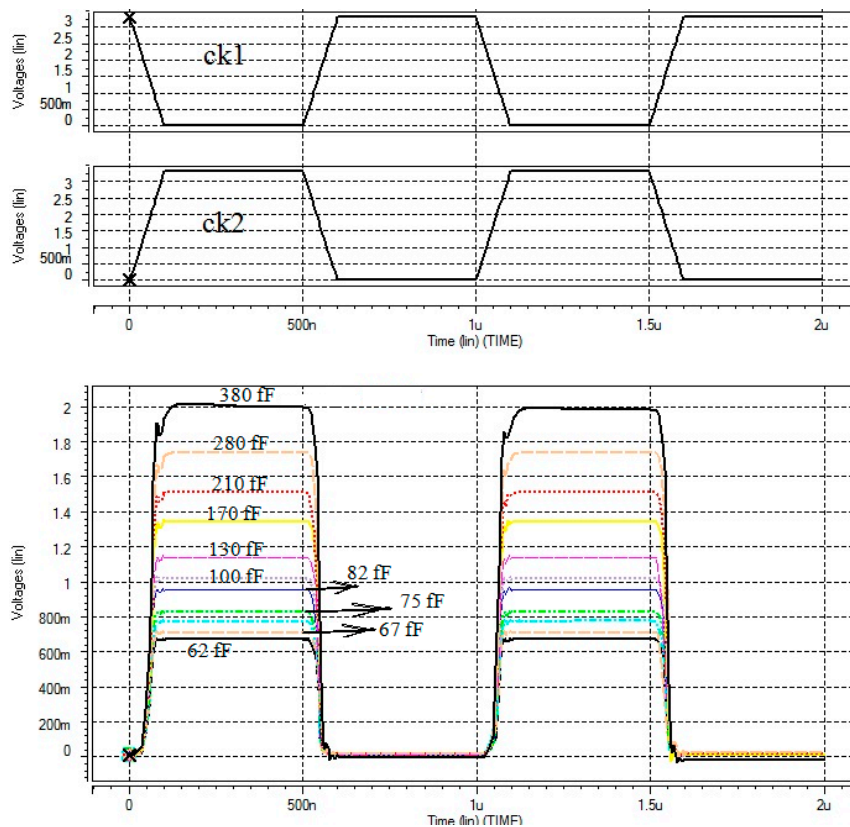


Figure 16. Simulation results of C2V convertor (blood glucose data (capacitance) to voltage of 0.6~2 V).

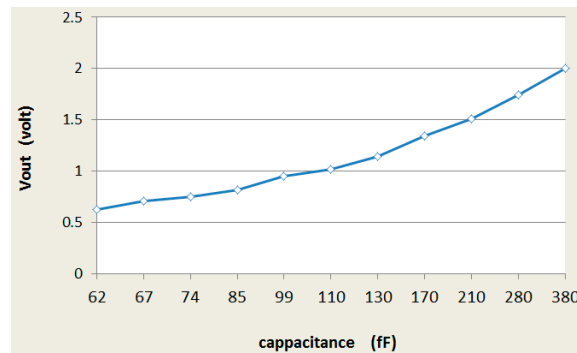


Figure 17. Obtained voltage *versus* capacitance of MEMS glucose microsensor.

The systematic model of Fuzzifier (from Figure 12) is evaluated with applying an input which obtained four Fuzzy language terms using Matlab software (Figure 18). Thus in circuitry, we implemented it with applying output voltage of C2V to the proposed Fuzzifier circuit of Figure 5, regulating it with digital data, our Fuzzy language terms are obtained using Hspice software (Figure 19). It shows that there is a good compatibility with the systematic results of Figure 18.

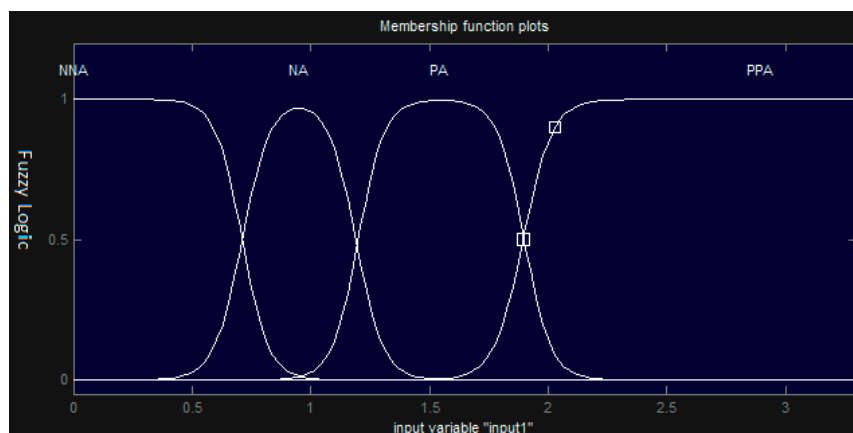


Figure 18. Systematic model language terms of Fuzzifier using MATLAB software.

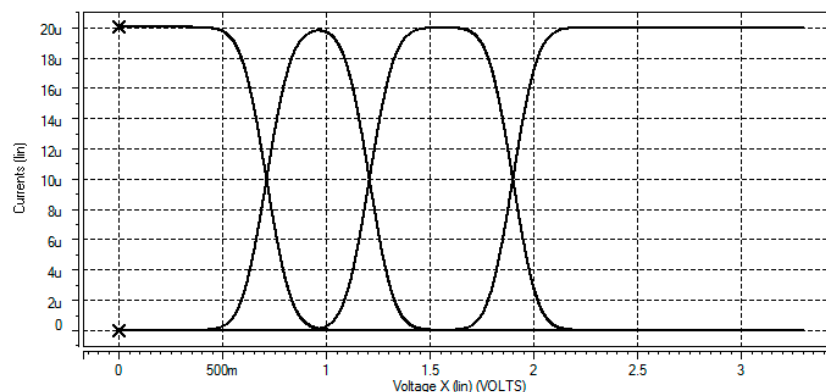


Figure 19. Simulation results of obtaining Fuzzy MFs according systematic regulation of Figure 18 and applying output voltage of C2V (0.6~2 V) to the Fuzzifier circuit (of Figure 5) using Hspice software.

As mentioned before and according to Figure 12, the proposed Fuzzifier and C2V circuits can be applicable in designing FLC chip to detect blood glucose, process its data in fuzzy logic environment, and then control micropumps [16] for Insulin injections.

5. Conclusions

A new Fuzzy general purpose MFG has been proposed. This structure uses differential blocks in circuitry to improve the type of MFs. We achieved this by scaled transistors that are controlled with switches instead of changing W/L ratios manually. Arbitrary slope and type shape of MFs (Gaussian, Trapezoidal and Triangular) obtained with 2^n selection states and enhancing numbers of them, respectively. The proposed structure has high accuracy, high resolution, and also has more application for fuzzy controller chips in VLSI implementations. With a specific purpose we used it here for obtaining fuzzy language terms from blood glucose MEMS microsensor. Thus we proposed a capacitance to voltage (C2V) circuit to convert capacitance variations of MEMS glucose microsensor to voltage values. Consequently the proposed Fuzzifier and C2V circuits can be applicable to detect the glucose data variations, process them in fuzzy environment, and finally control insulin injection in diabetic patients by MEMS micropumps.

Acknowledgments

The authors would like to thank M. Mottaghi, M. Mosazadeh, A. Khoei, and Kh. Hadidi.

Author Contributions

Ghader Yosefi designed concept and organized the study and then did analysis and simulations. Sattar Mirzakuchaki suggested proportional subject and suitable references. He also edited the study specially and technically. Farshid Raissi suggested the special methods in the structure to have the best operations and high accuracy.

Conflicts of Interest

The authors declare no conflict of interest.

References

1. Bouras, S.; Kotronakis, M.; Suyama, K. Mixed Analog-Digital Fuzzy Logic Controller with Continues-Amplitude Fuzzy Inferences and Defuzzification. *IEEE Trans. Fuzzy Syst.* **1998**, *6*, 205–215.
2. Baturone, I.; Sanchez-Solano, S.; Barriga, A.; Huertas, J.L. Integrated Circuit Implementation of Fuzzy Controllers. *IEEE Trans. J. Solid State Circuits* **1996**, *31*, 1051–1058.
3. Mesgarzadeh, B. A CMOS Implementation of Current-Mode Min-Max Circuits and A Sample Fuzzy Application. In Proceedings of the 2004 IEEE International Conference on Fuzzy Systems, Budapest, Hungary, 25–29 July 2004; pp. 941–946.
4. Choi, J.; Sheu, B.J.; Chang, J.C.-F. A Gaussian Synapse Circuit for Analog VLSI Neural Networks. *IEEE Trans. Very Larg. Scale Integr. (VLSI) Syst.* **1994**, *2*, 129–133.

5. Ramirez-Angulo, J. A BiCMOS universal membership function circuit with fully independent, adjustable parameters. *IEEE Int. Symp. Circuits Syst.* **1995**, *1*, 275–278.
6. Ota, Y.; Wilamowski, B. Current-mode CMOS implementation of a fuzzy Min-Max network. *World Congr. Neural Netw.* **1995**, *2*, 480–483.
7. Wilamowski, B.M.; Jaeger, R.C. Neuro-Fuzzy Architecture for CMOS Implementation. *IEEE Trans. Ind. Electron.* **1999**, *46*, 1132–1136.
8. Yosefi, G. Design a Novel Structure of Bio MEMS Micro Sensor and Micro Pump for Diagnosis Blood Glucose Level and Suitable Insulin Injection. Ph.D. Thesis, Islamic Azad University, Tehran, Iran, 2014.
9. Razavi, B. *Design of Analog CMOS Integrated Circuits*; Mc. Graw.-Hill: New York, NY, USA, 2001.
10. Khoei, A.; Hadidi, K.; Khorasani, M.R.; Amirkhanzadeh, R. Fuzzy level control of a tank with optimum valve movement. *Fuzzy Sets Syst.* **2005**, *150*, 507–523.
11. Amirkhanzadeh, R.; Khoei, A.; Hadidi, K. A mixed-signal current-mode fuzzy logic controller. *AEU Int. J. Electron. Commun.* **2005**, *59*, 177–184.
12. Aminifar, S.; Khoei, A.; Hadidi, K.; Yosefi, G. A digital CMOS fuzzy logic controller chip using new fuzzifier and max circuit. *AEU Int. J. Electron. Commun.* **2006**, *60*, 557–566.
13. Mokarram, M.; Khoei, A.; Hadidi, K. CMOS fuzzy logic controller supporting fractional polynomial membership functions. *Fuzzy Sets Syst.* **2015**, *263*, 112–126.
14. Tsai, H.C.; Wu, T.K.; Tsai, T. A CMOS Micromachined Capacitive Tactile Sensor with Compensation of Process Variations. In Proceedings of the IEEE Biomedical Circuits and Systems Conference (BioCAS), Rotterdam, The Netherlands, 31 October–2 November 2013; pp. 342–345.
15. Arfah, N.; Zahirul Alam, A.H.M.; Khan, S. Capacitance-to-Voltage Converter for Capacitance Measuring System. In Proceedings of the 4th IEEE International Conference on Mechatronics (ICOM), Kuala Lumpur, Malaysia, 17–19 May 2011; pp. 1–4.
16. Yosefi, G.; Mirzakuchaki, S.; Raissi, F.; Afrang, S. Design and Analysis of a High Force, Low Voltage and High Flow Rate Electro-Thermal Micropump. *Micromachines* **2014**, *5*, 1323–1341.