

Article

Estimation of Canopy Water Content by Means of Hyperspectral Indices Based on Drought Stress Gradient Experiments of Maize in the North Plain China

Feng Zhang ¹ and Guangsheng Zhou ^{2,*}

¹ State Key Laboratory of Vegetation and Environmental Change, Institute of Botany, Chinese Academy of Sciences, Beijing 100093, China; E-Mail: zhangfeng@ibcas.ac.cn

² Chinese Academy of Meteorological Sciences, Beijing 100081, China

* Author to whom correspondence should be addressed; E-Mail: gszhou@cma.gov.cn; Tel.: +86-10-6840-9148; Fax: +86-10-6217-5931.

Academic Editors: Pablo J. Zarco-Tejada, Clement Atzberger and Prasad S. Thenkabail

Received: 17 August 2015 / Accepted: 3 November 2015 / Published: 12 November 2015

Abstract: Here, we conducted drought stress gradient experiments of maize, and used ten water content related vegetation indices (VIs) to estimate widely variable canopy water content (*CWC*) and mean leaf equivalent water thickness at canopy level (\overline{EWT}) based on *in situ* measurements of Lambertian equivalent reflectance and important biological and environmental factors during the 2013–2014 growing seasons in the North China Plain. Among ten VIs, the performances of green chlorophyll index (CI_{green}), red edge chlorophyll index ($CI_{red\ edge}$), and the red edge normalized ratio ($NR_{red\ edge}$) were most sensitive to the variations of *CWC* and \overline{EWT} . Simulated drought in two differently managed irrigation years did not affect the sensitivities of VIs to the variations in *CWC* and \overline{EWT} . However, the relationships between *CWC* and VIs were more noticeable in 2014 than in 2013. In contrast, \overline{EWT} and VIs were more closely related in 2013 than in 2014. *CWC* and relative soil water content (*RSWC*) obviously exhibited a two-dimensional trapezoid space, which illustrated that *CWC* was determined not only by soil water status but also by crop growth and stage of development. This study demonstrated that nearly half of the variation in *CWC* explained by spectral information was derived from the variation in leaf area index (*LAI*).

Keywords: canopy water content; drought stress gradients; hyperspectral remote sensing; maize canopy; spectral vegetation indices

1. Introduction

Vegetation water content serves as an important biophysical characteristic of terrestrial vegetation. Knowledge related to vegetation water conditions and how it varies can contribute to accurately detecting the physiological status of vegetation [1–3]. It can also provide useful information for making sound decisions related to agriculture irrigation and assist with drought monitoring assessment [2,4,5]. Generally, canopy water content (CWC) and the mean leaf equivalent water thickness at the canopy level (\overline{EWT}) are widely used for describing the vegetation water status [6,7]. Since many biogeochemical processes including photosynthesis, evapotranspiration and net primary production are closely related to vegetation CWC and \overline{EWT} [8–10], therefore, gaining a thorough and better understanding of vegetation CWC and \overline{EWT} will play an important role in mapping and monitoring the conditions of terrestrial ecosystems such as environmental stress [11], wildfire potential [12] or soil moisture retrieval [13].

Remote sensing techniques provide a non-destructive, effective, and reliable method for assessing canopy biophysical variables [5]. Hyperspectral remote sensing has been widely used especially to estimate leaf area index (LAI) [14–16], fraction of absorbed photosynthetically active radiation ($fAPAR$) [17,18], chlorophyll content [19–22], photosynthetic parameters [23], biomass [14], and gross primary production [21,22]. In recent years, studies of vegetation water content using remote sensing techniques have received widespread attention, and have become a focus point during vegetation monitoring and parameter inversion. Currently, a few studies have been conducted on the estimation of vegetation water content using hyperspectral data [5–7,10,24,25]. In these studies, two major approaches, physically-based radiative transfer models [5,6,10,24,25] and statistical models mainly including the first derivative reflectance spectra [6,7,25], spectral reflectance indices [5,7,10,24,26], continuum removed spectra analysis [6,10], and full spectrum methods [26] were used.

Radiative transfer models, being functions of canopy, leaf, and soil background characteristics, had theoretically physical foundations, but they had the ill-posed nature of model inversion [27,28]. Statistical approaches, being sensor-specific and dependent on site and sampling conditions, are easy to implement [28,29]. In addition, the full spectrum methods, such as partial least squares regression, had better predictive powers for biophysical variables [30], but it suffers from the problem of over fitting [31]. Moreover, Mirzaie *et al.* [26] also estimated vegetation water content by using all possible band combinations of vegetation indices (VIs) and obtained satisfactory results. Here, in the present study, the performances of the most widely used VIs were evaluated to predict CWC and \overline{EWT} so that these standard VIs could be linked with satellite data for applications at broader temporal and spatial scales.

Drought stress gradient experiments are effective platforms for constructing a universal algorithm for accurately estimating a wide dynamic range of CWC . This algorithm needs to consider both the saturation of VIs at moderate to high vegetation conditions and the adaptation of estimation models using VIs in cases of sparse canopies. This study used spectral reflectance and important biological and environmental measurements from maize drought stress gradient experiments conducted during the growing seasons in 2013–2014. The goals were to: (i) compare and evaluate the accuracy of ten VIs in estimating CWC and \overline{EWT} along soil moisture gradients during the entire growing season for maize; (ii) test whether two years of different irrigation management techniques can significantly affect the relationships between VIs and CWC and \overline{EWT} ; (iii) determine whether a robust algorithm for widely variable CWC and \overline{EWT} can be devised; and (iv) to assess the performance of hyperspectral remote

sensing data for monitoring the seasonal variations of CWC and \overline{EWT} . This study was conducted to select the most sensitive VIs to the variations of CWC and \overline{EWT} , to construct a universal algorithm for the accurate estimations of CWC and \overline{EWT} , and ultimately to evaluate the performances of VIs for monitoring crop canopy water status for maize.

2. Materials and Methods

2.1. Study Area

Experiments on responses of maize to drought stress gradients were conducted during 2013–2014 in a large water-controlled experimental field at Gucheng Ecological and Agricultural Research Station (39°08'N, 115°40'E, 15.2 m a.s.l.), Chinese Academy of Meteorological Sciences, in Dingxing County, Hebei Province, China. The warm-temperate continental monsoon climate provides a mean annual air temperature and precipitation of 11.7 °C and 551.5 mm, respectively. The typical brown soil had an organic matter content of 12.1 g·kg⁻¹ and total nitrogen of 0.56 g·kg⁻¹ [32]. This study area is located in a typical irrigation agriculture region in the North China Plain. The dominant cropping system in this region is a double cropping system of winter wheat and especially maize. The selected crop type was maize and the maize hybrid was Zheng Dan 958, sown in late June and harvested in early October. This study employed 2 × 4 m experimental plots with natural field soil; each plot was equipped with a 3 m deep concrete wall to avoid horizontal water exchange, and also a buffer at a depth of 3 m to avoid vertical water exchange (Figure 1). Large electric rain-out shelters were used to exclude rainfall, so that the water supply could be artificially controlled for crop growth and development [33].

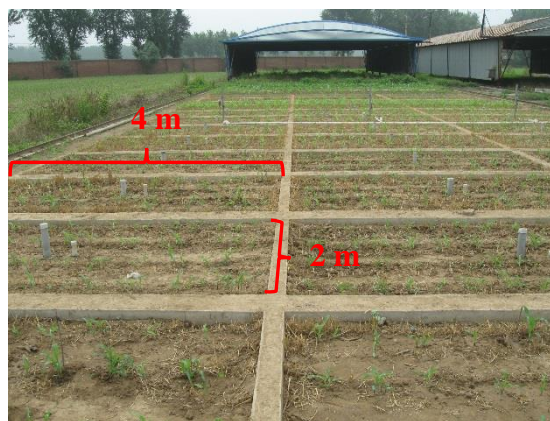


Figure 1. Photo 2 × 4 m experimental plots and large electric precipitation control shelters at Gucheng Ecological and Agricultural Research Station, Chinese Academy of Meteorological Sciences, Dingxing County, Hebei Province, China.

2.2. Experimental Design and Treatments

Prior to the irrigation treatments using water gradients, a small amount of appropriate irrigation was conducted to maintain a consistent background level of soil water in all plots; after this initial irrigation, aside from the irrigation methods described below, the maize was never irrigated. In 2013, seven different amounts were applied to various plots for water irrigation treatments numbered 1 to 7 (120, 100, 80, 60, 40, 25, and 15 mm). This was completed on 24 July 2013 at the seven-leaf stage of maize

after observations on 23 July 2013. In addition, corresponding rainfed plot controls with no irrigation and a rainfed field control were designed. The first measurements after irrigation were conducted on 29 July 2013, and only in irrigation treatments 1 (120 mm) and 2 (120 mm) were re-wetted with the amounts of 80 mm and 40 mm on 26 August 2013 after field measurements on 25 August 2013 at the flowering stage in maize, respectively (Table 1). In 2014, seven water treatments from 1 to 7 were conducted with each treatment to simulate different irrigation amounts (225, 150, 120, 90, 60, 30, and 10 mm) and the corresponding rainfed plot control with no irrigation was also designed on 1 July 2014; in this case, no field control was employed (Table 1). Three replicates were conducted during the experiments, with each plot being one replicate in both 2013 and 2014. In total, 24 experimental plots were constructed: seven with water gradients for 21 plots plus three control plots as well as a field control in 2013. Similarly, 24 experimental plots were also constructed in 2014 but without a field control.

Table 1. Experimental design and irrigation amounts (mm) in 2013 and 2014.

Year	Control Plot	Treat. 1	Treat. 2	Treat. 3	Treat. 4	Treat. 5	Treat. 6	Treat. 7	Field Control
2013	0	120 + 80	100 + 40	80	60	40	25	15	0
2014	0	225	150	120	90	60	30	10	-

Treat. is the abbreviation for treatment and “+” indicates rewetting irrigation.

2.3. Field Measurements

2.3.1. Canopy Spectral Reflectance

A total of sixteen sets of field reflectance spectra measurements were made on a nearly weekly basis during July–October as follows: 23 and 30 July, 8, 18 and 25 August, 5 and 20 September, and 8 October in 2013, and 10 and 18 July, 1, 7 and 19 August, 3, 16 and 27 September in 2014 (Table 2). An ASD FieldSpec3 spectroradiometer (Analytical Spectral Devices, Boulder, CO, USA) was used to measure spectral reflectance (details in [18]). Spectral measurements were made on days with clear skies between 11 h and 14 h. The fiber optics, with a field of view of 25°, were handheld approximately 1–1.3 m above the undisturbed maize canopy at the nadir position at each experimental plot for every observation during the growing seasons of 2013–2014 as well as for the field control in 2013. Each water treatment was replicated three times and with 20 spectral readings for each spectral measurement above the maize canopy per experimental plot. The mean value of spectral reflectance averaged over these 20 spectral measurements was used as the spectral reflectance of each experimental plot. During spectral measurements, a standard white spectralon target with a reflectance of 0.99 was placed on the ground next to the experimental plots and was used as a reference against which the target objects could be calibrated. Thus, the reflectance values became dimensionless.

Table 2. Field reflectance spectra measurement dates in 2013 and 2014.

Year	NO. 1	NO. 2	NO. 3	NO. 4	NO. 5	NO. 6	NO. 7	NO. 8
2013	23 July	30 July	8 August	18 August	25 August	5 September	20 September	8 October
2014	10 July	18 July	1 August	7 August	19 August	3 September	16 September	27 September

2.3.2. CWC

We made three replicates for each irrigation treatment, and used one standard maize plant per experimental plot as well as 3–4 standard plants for the field control, and harvested these plants to measure fresh weight (FW , $\text{g}\cdot\text{m}^{-2}$) and dry weight (DW , $\text{g}\cdot\text{m}^{-2}$) for leaves, stems, and fruit. The area-coefficient method was used to measure LAI [18]. In this study, only one standard plant per plot was harvested, and its individual lengths and widths were measured on each sampling date. Observation dates of biomass and LAI were the same as for the spectral reflectance measurements. Using the dates listed above, eight data collection campaigns per year were conducted, with sixteen campaigns in total.

At the canopy level, CWC can be defined as the quantity of water per unit area of ground surface ($\text{g}\cdot\text{m}^{-2}$) [34]. CWC is calculated by \overline{EWT} , defined as quantity of water per unit leaf area ($\text{g}\cdot\text{cm}^{-2}$) [35], multiplied by the canopy LAI or the difference between FW and DW . In this study, CWC was the quantity of canopy leaf water in maize per unit area of ground surface calculated by Equation (1). Additionally, the canopy level reflectance is usually affected by LAI and a large variability in LAI will enhance water content related features in spectral reflectance, and thus improve the estimation accuracy of CWC . Therefore, to evaluate the effects of LAI on water content related VIs for the estimation of CWC , we also calculated \overline{EWT} by Equation (2):

$$CWC = FW - DW \quad (1)$$

$$\overline{EWT} = CWC/LAI \quad (2)$$

2.3.3. Soil Water Content

After the spectral measurements, gravimetric soil moisture (θ_m , %) was measured by oven-drying soil samples at 105°C for 24 h for controlled-gradient plots, as well as for the corresponding plot and field controls. Every 10 cm soil layer was sampled for 0–50 cm soil profiles in 2013 and 0–90 cm in 2014, with three replicates for one water treatment and one sampling per plot. In addition, four observation sites were used for the field control with one replicate for each observation site in 2013. Relative soil water content ($RSWC$, %) was the ratio of θ_m and field capacity (F_c ; Equation (3)):

$$RSWC = (\theta_m/F_c) \times 100\% \quad (3)$$

In this study, the roots of maize penetrated about 30 cm. Therefore, the mean values of $RSWC$ were averaged over three values at 10, 20 and 30 cm soil depth represented the $RSWC$ value of each experimental plot.

2.4. Vegetation Indices Used in This Analysis

We describe ten water content related VIs with the goal of examining their potential of estimating widely variable CWC and \overline{EWT} (Table 3 [4,19,36–41]).

Table 3. Vegetation indices (VIs) used in the study and related source references.

Index	Equation	Reference
Normalized difference vegetation index (NDVI)	$(\rho_{nir} - \rho_{red})/(\rho_{nir} + \rho_{red})$	[36]
Red edge normalized ratio (NR _{red edge})	$(\rho_{750} - \rho_{710})/(\rho_{750} + \rho_{710})$	[37]
Water index (WI)	ρ_{900}/ρ_{970}	[4]
Normalized difference water index (NDWI)	$(\rho_{860} - \rho_{1240})/(\rho_{860} + \rho_{1240})$	[38]
Land surface water index (LSWI)	$(\rho_{nir} - \rho_{swir})/(\rho_{nir} + \rho_{swir})$	[39,40]
Green chlorophyll index (CI _{green})	$(\rho_{750}/\rho_{550}) - 1$	[19]
Red edge chlorophyll index (CI _{red edge})	$(\rho_{750}/\rho_{710}) - 1$	[19]
Normalized red edge reflectance curve area (680–780nm; Area _{680–780})	$\sum_{i=680}^{780} \left(\frac{\rho_{\lambda(i)}}{\rho_{780}} \right)$	[41]
Normalized reflectance curve area (1015–1050nm; Area _{1015–1050})	$\sum_{i=1015}^{1050} \left(\frac{\rho_{\lambda(i)}}{\rho_{1050}} \right)$	This study
Normalized reflectance curve area (1110–1170nm; Area _{1110–1170})	$\sum_{i=1110}^{1170} \left(\frac{\rho_{\lambda(i)}}{\rho_{1170}} \right)$	This study

Notes: ρ_{nir} , ρ_{red} , and ρ_{swir} are the averaged reflectance among the waveband range to match MODIS data in the near-infrared (841–876 nm), red (620–670 nm), and shortwave infrared (SWIR1: 1628–1652 nm) wavelengths, respectively.

2.4.1. Normalized Indices

The normalized difference vegetation index (NDVI) is the most commonly used vegetation index. It is based on the contrast between the maximum absorption in the red due to chlorophyll pigments and the maximum reflectance in the infrared caused by leaf cellular structure and LAI [30]. In addition, a red edge normalized ratio (NR_{red edge}) uses the same NDVI formulation but with the red edge (around 700 nm) bands. NR_{red edge} is also a good predictor of green vegetation information [42]. Viña and Gitelson [17] used it to estimate *fAPAR*, and Wu *et al.* [36] tested NR_{red edge} in the remote estimation of canopy chlorophyll content.

2.4.2. Water-Related Indices

Studies have been conducted on VIs closely related to canopy water status. The land surface water index (LSWI) was calculated as the normalized difference between the near-infrared (NIR; 780–890 nm) and the shortwave-infrared (SWIR; 1580 nm–1750 nm) wavelengths [39,40]. The water band index (WI) is the ratio between the reflectance at 900 and 970 nm [4]. In addition, the normalized difference water index (NDWI) used reflectance values in the 860 nm in the NIR region and 1240 nm in the SWIR1 region spectral bands of hyperspectral data [38].

2.4.3. Chlorophyll Indices

Vegetation water content was not only related with water information, but also had quite a close relationship with crop greenness (chlorophyll). Gitelson *et al.* [19] proposed the chlorophyll index of red edge (CI_{red edge}) model using a stepwise technique based on a linear regression of the model vs. total chlorophyll content in the canopy. They found a close relationship between CI_{red edge} and canopy chlorophyll content in maize and soybean. A further application of CI_{red edge} was for remote sensing of gross primary production [19,21,22,43]. In this study, we used both of the CI_{red edge} and the green chlorophyll index (CI_{green}).

2.4.4. Normalized Reflectance Curve Area Indices

Ren *et al.* [41] showed that the performance of the red-edge reflectance curve area between the normalized reflectance curve and wavelength in 680–780 nm region was better than that of traditional VIs and the red-edge position when used to estimate green aboveground biomass in arid and semi-arid areas. Studies showed that two water absorption features exist at approximately 970 nm and 1200 nm that were caused by the absorption by O-H bonds in liquid canopy water [44]. Moreover, studies demonstrated that derivative spectra at the right slope of the 970 nm absorption feature and at the left slope of the 1200 nm feature had potential as predictors of CWC [6]. Therefore, we not only introduced the normalized red edge reflectance curve area (680–780 nm; $\text{Area}_{680-780}$), but also constructed the normalized reflectance curve area (1015–1050 nm; $\text{Area}_{1015-1050}$) and the normalized reflectance curve area (1110–1170 nm; $\text{Area}_{1110-1170}$). Our goal was to explore their sensitivities to the variations of CWC and \overline{EWT} . Here, the reflectance curve area refers to an area between the reflectance curve and the horizontal coordinate axis (wavelength) in the three regions of 680–780 nm, 1015–1050 nm and 1110–1170 nm, respectively.

All statistical analyses were performed with SPSS 17.0 software (SPSS, Chicago, IL, USA), and SigmaPlot 10.0 software (Systat, San Jose, CA, USA) was used to draw the figures.

3. Results

3.1. Temporal Variations of Soil Moisture, CWC and \overline{EWT}

The RSWC and CWC varied seasonally under different water treatments for maize during the growing seasons in 2013–2014 (Figure 2). In both years, different irrigation treatments led to significant differences of soil water status. In 2013, controlled-irrigation started on 24 July at the seven-leaf stage after observations on 23 July 2013 and RSWC gradients were observed from 29 July 2013. In 2014, early soil water control was conducted on 1 July 2014 at the three-leaf stage, and RSWC gradients were observed from 10 July 2014. In addition, the rewetting treatments with 40 and 80 mm were made only for treatments 1 and 2 on 26 August 2013. These rewetting treatments induced a sudden increase of RSWC for these two treatments on 5 September 2014 (the first measurements after rewetting treatments), which gradually decreased later in the experiment. The status of soil water in 2013 and 2014 was similar in that a significant difference was observed among the drought-treated plots at the early stage of irrigation treatment, although these differences gradually declined over time and into the late stage of maize growth. Except for the observation dates of 23 July and 25 August for the field control in 2013, other values of RSWC were basically maintained at a level above the saturated water content. Thus, it was demonstrated that different irrigation gradient treatments resulted in RSWC gradients with different degrees of drought for each experimental plot. In total, compared with the soil water conditions in 2013, 2014 tended to be drier with RSWC values below 40% during the middle-late stages of growth in maize. Therefore, each treatment plot basically maintained consistent and extremely dry conditions.

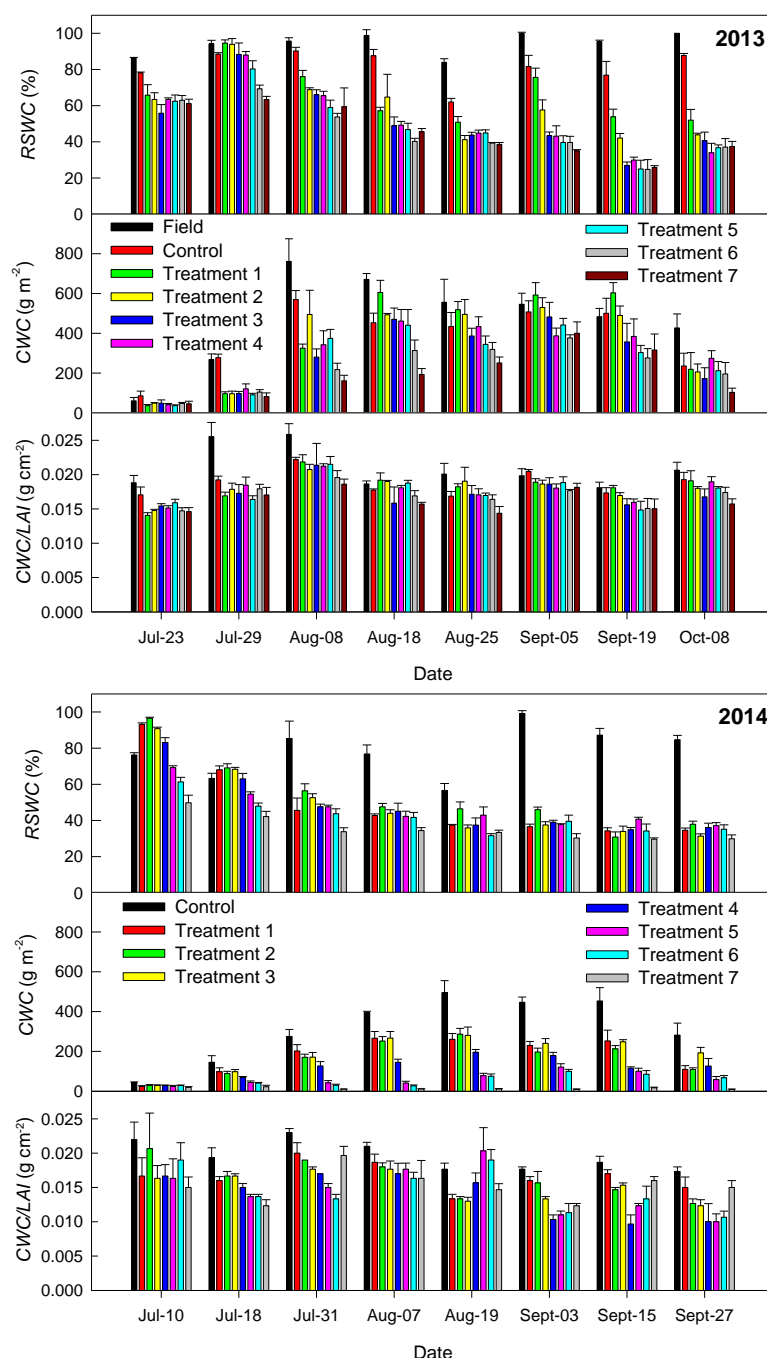


Figure 2. Variations in relative soil water content (RSWC, %), canopy water content (CWC, $\text{g} \cdot \text{m}^{-2}$) and mean leaf equivalent water thickness at the canopy level (\overline{EWT} , i.e., $\text{CWC}/\text{leaf area index (LAI)}$, $\text{g} \cdot \text{cm}^{-2}$) during the growing seasons of 2013 and 2014. Error bars indicate the mean standard errors of three replicates. For 2013, treatments 1–7 indicate seven different irrigation amounts, 120, 100, 80, 60, 40, 25, and 15 mm, as well as a rainfed plot control with no irrigation (Control) and a rainfed field control (Field); for 2014, treatments 1–7 indicate different irrigation amounts of 225, 150, 120, 90, 60, 30, and 10 mm and the rainfed plot control with no irrigation (Control).

Compared with CWC and RSWC, the seasonal trend of \overline{EWT} was not obvious. However, the differences caused by the drought gradient were remarkable (Figure 2). In 2013, after the irrigation treatment on 24 July, improved soil water status resulted in a higher value of \overline{EWT} . In 2014, it followed

this pattern during the early stage of growth in maize, but when entering into the middle-late stages, the \overline{EWT} values declined with experimental plots well-supplied with water entering into the reproductive stage. For the experimental treatments of moderate or severe drought, the delayed phenological phases or not entering into the reproductive stage resulted in that \overline{EWT} did not always decrease and finally reached its minimum value for each plot at the end of the 2014 growing season (Figure 2).

Obvious differences were observed among each water treatment, between 2013 and 2014, and in the seasonal variations in *CWC*. Based on measurements of *CWC*, the differences among the drought-treated plots and corresponding control plots were amplified. This not only reflected the difference of soil water background, but also illustrated the differences in plant development that resulted from differences in soil water content during the entire growing season. Although different degrees of drought-stress existed, *CWC* showed a single peak seasonal trend, with the peak occurring around 20 August. Periods with superior soil water conditions had a more obvious single peak seasonal trend. In contrast, during drought stress the seasonal trend was less obvious and the peak values decreased or the date of the peak values was delayed (Figure 2). At an inter-annual scale, the seasonal trend of *CWC* was consistent with *RSWC*, and crops obviously grew better in 2013 than in 2014. The overall values of *CWC* were higher in 2013 than in 2014.

Table 4 presents the descriptive statistics of canopy biophysical characteristics. As expected, the irrigation treatments induced a wide variation in *LAI*, *FW*, *DW*, *CWC*, and \overline{EWT} . In addition, the two differently managed irrigation methods occurring at different stages for maize significantly affected maize growth and development. *LAI* in 2013 varied and this variation was obviously higher than the variation in 2014 (Table 4). The values of leaf *FW/DW*, *CWC*, and \overline{EWT} were all higher in 2013 than in 2014 (Table 4). In general, compared with 2013, drought affected crop growth more in 2014.

Table 4. Summary statistics of canopy biophysical characteristics of maize acquired *in situ* under different irrigation treatments during the 2013 ($n = 72$) and 2014 ($n = 64$) growing seasons.

Canopy Biophysical Characteristics	Year	Range (Min–Max)	Mean	Median	SEM	Std. Deviation	CV
<i>LAI</i> (leaf area index)	2013	0.23–3.60	1.75	1.89	0.11	0.95	0.54
	2014	0.06–2.78	0.89	0.75	0.09	0.71	0.80
<i>FW</i> (fresh weight, $\text{g}\cdot\text{m}^{-2}$)	2013	44.3–917.2	412.2	414.8	27.9	236.5	0.57
	2014	12.7–668.7	186.0	143.8	20.0	160.3	0.86
<i>DW</i> (dry weight, $\text{g}\cdot\text{m}^{-2}$)	2013	7.2–206.8	91.2	95.7	6.5	55.3	0.61
	2014	3.3–174.3	46.5	35.6	5.2	41.3	0.89
\overline{EWT} (mean leaf equivalent water thickness at canopy level, $\text{g}\cdot\text{cm}^{-2}$)	2013	0.014–0.026	0.018	0.018	0.00028	0.0024	0.13
	2014	0.010–0.023	0.016	0.016	0.00039	0.0032	0.20
<i>CWC</i> (canopy water content, $\text{g}\cdot\text{m}^{-2}$)	2013	36.9–761.4	320.9	322.2	21.7	183.7	0.58
	2014	9.4–494.4	139.5	105.3	15.0	119.7	0.86

SEM is the standard error of mean and CV is coefficient of variation.

3.2. Relationships between *CWC*, \overline{EWT} and Biophysical Properties and *RSWC*

Table 5 summarizes the correlated relationships between *CWC* and \overline{EWT} with *LAI*, *FW*, *DW*, and *RSWC* for 2013 and 2014. In 2013, *CWC* showed an extremely significant linear correlation with *FW*, *LAI*, and *DW*. Significant linear relationships were also observed between *CWC* and \overline{EWT} as well as

\overline{EWT} and $RSWC$. Similarly, CWC had extremely significant linear relationships with FW , DW , and LAI in 2014. However, the position of the relative importance between the relationships of CWC and DW and LAI changed. In comparison, the relationship between CWC and DW in the drier year was slightly closer than that of CWC and LAI . In addition, significant linear relationships existed between \overline{EWT} and $RSWC$, but not between CWC and \overline{EWT} . Comprehensively considering the data sets in 2013 and 2014, CWC had extremely significant linear relationships with FW , LAI , DW , and \overline{EWT} ; and \overline{EWT} also had a significant linear relationship with $RSWC$. Although there were better water conditions in 2013 and it was relatively drier in 2014, CWC was always closely correlated with FW , LAI , and DW . However, it was never significantly linearly correlated with $RSWC$. Furthermore, it is important to note that the relationship between CWC and \overline{EWT} varied with inter-annual eco-hydrological status. That is, CWC had significant linear relationship with \overline{EWT} in 2013, although it was never significantly linear correlated with \overline{EWT} in 2014.

Table 5. Spearman's rank correlation coefficients between CWC , \overline{EWT} and canopy biophysical variables and soil moisture during the 2013 and 2014 growing seasons.

	$RSWC$ (Relative Soil Water Content, %)	\overline{EWT}	LAI	FW	DW
2013 ($n = 72$)					
\overline{EWT} (mean leaf equivalent water thickness at canopy level, $g\ cm^{-2}$)	0.441 ***				
LAI (leaf area index)	−0.054	0.360 **			
FW (fresh weight, $g\ m^{-2}$)	0.027	0.472 ***	0.984 ***		
DW (dry weight, $g\ m^{-2}$)	−0.078	0.347 **	0.962 ***	0.963 ***	
CWC (canopy water content, $g\ m^{-2}$)	0.046	0.514 ***	0.977 ***	0.997 ***	0.944 ***
2014 ($n = 64$)					
\overline{EWT} (mean leaf equivalent water thickness at canopy level, $g\ cm^{-2}$)	0.513 ***				
LAI (leaf area index)	0.030	−0.048			
FW (fresh weight, $g\ m^{-2}$)	0.113	0.126	0.977 ***		
DW (dry weight, $g\ m^{-2}$)	0.015	0.027	0.988 ***	0.987 ***	
CWC (canopy water content, $g\ m^{-2}$)	0.143	0.156	0.970 ***	0.998 ***	0.978 ***
Total ($n = 136$)					
\overline{EWT} (mean leaf equivalent water thickness at canopy level, $g\ cm^{-2}$)	0.525 ***				
LAI (leaf area index)	0.054	0.317 ***			
FW (fresh weight, $g\ m^{-2}$)	0.126	0.438 ***	0.987 ***		
DW (dry weight, $g\ m^{-2}$)	0.027	0.333 ***	0.981 ***	0.980 ***	
CWC (canopy water content, $g\ m^{-2}$)	0.153	0.466 ***	0.981 ***	0.998 ***	0.969 ***

All correlations are significant at * $p < 0.05$, ** $p < 0.01$ level, or *** $p < 0.001$.

3.3. Relationships between CWC , \overline{EWT} and VIs

The linear/logarithmic relationships were constructed between CWC and ten VIs including the normalized indices ($NDVI$, $NR_{red\ edge}$), water-related indices (WI , $NDWI$, $LSWI$), chlorophyll indices (CI_{green} , $CI_{red\ edge}$), and the normalized reflectance curve area indices ($Area_{680-780}$, $Area_{1015-1050}$, and

Area_{1110–1170}; Figure 3). Among them, CI_{green}, NR_{red edge}, Area_{680–780}, and CI_{red edge} increased significantly with increasing CWC, and showed better sensitivities to the variation of CWC. The relationships between CWC and Area_{680–780}, NDVI, and LSWI could be described well by logarithmic equations. In addition, significantly linear relationships were also found between CWC and WI, LSWI, Area_{1015–1050}, NDWI, and Area_{1110–1170} (Figure 3).

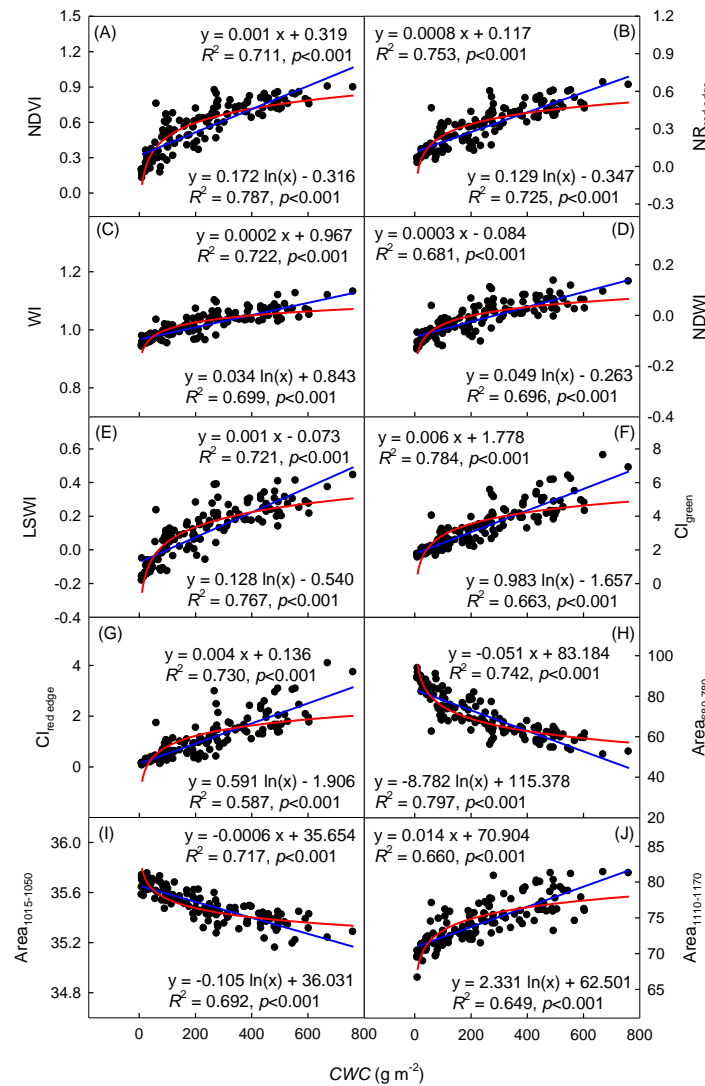


Figure 3. Relationships between (A) normalized difference vegetation index (NDVI), (B) red edge normalized ratio (NR_{red edge}), (C) water index (WI), (D) normalized difference water index (NDWI), (E) land surface water index (LSWI), (F) green chlorophyll index (CI_{green}), (G) red edge chlorophyll index (CI_{red edge}), (H) normalized red edge reflectance curve area (680–780 nm; Area_{680–780}), (I) normalized reflectance curve area (1015–1050 nm; Area_{1015–1050}), and (J) normalized reflectance curve area (1110–1170 nm; Area_{1110–1170}) vs. canopy water content (CWC) for maize during the growing seasons of 2013–2014.

Thus, based on the relationships between VIs and CWC, the ten VIs that were related to water content and tested in this study were split into three categories. The first VI type had significant linear relationships with CWC instead of logarithmic ones, including CI_{green}, NR_{red edge}, and CI_{red edge}. To some degree, they could effectively overcome the saturation effects at moderate to high CWC values. The

second VI type had predominantly logarithmic relationships with CWC , rather than linear relationships, such as $Area_{680-780}$, $NDVI$, and $LSWI$. This type of VI inevitably had saturation effects to high CWC values, which were difficult to overcome. For the third VI type, the linear/logarithmic relationships had equal regression effects, and they also tended to saturate with increasing CWC , and included WI , $Area_{1015-1050}$, $NDWI$, and $Area_{1110-1170}$.

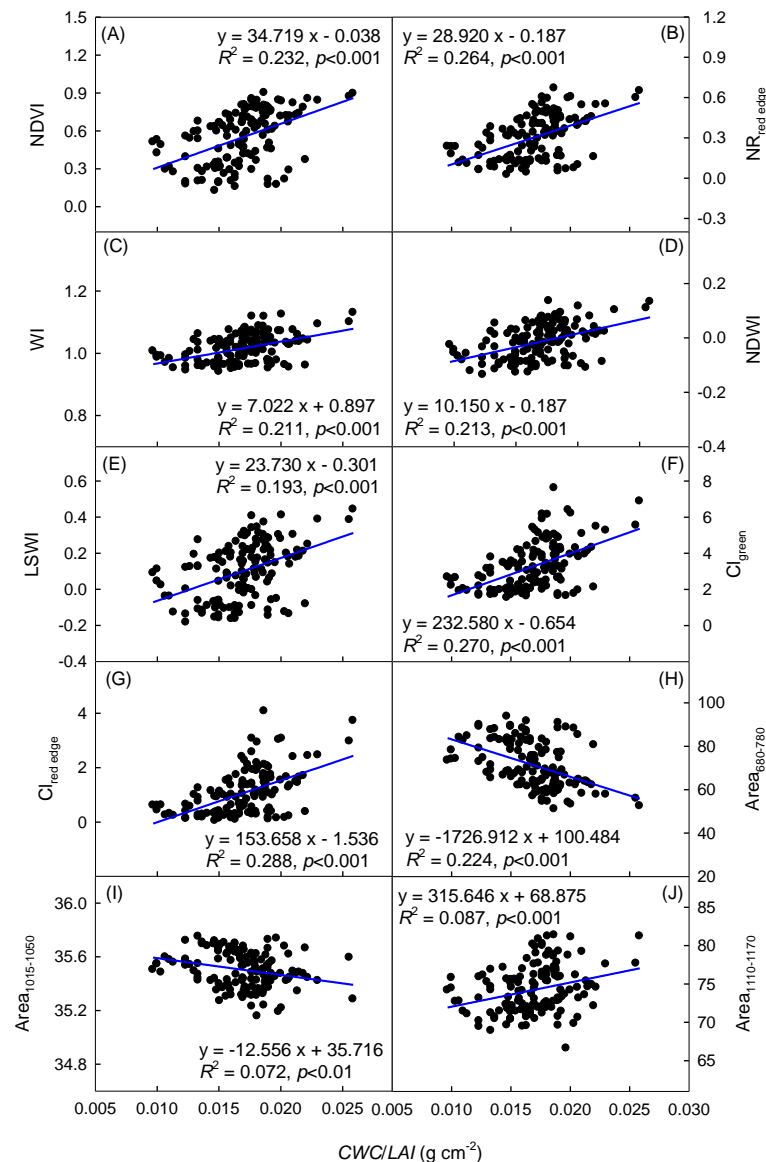


Figure 4. Relationships between (A) $NDVI$, (B) $NR_{red\ edge}$, (C) WI , (D) $NDWI$, (E) $LSWI$, (F) CI_{green} , (G) $CI_{red\ edge}$, (H) $Area_{680-780}$, (I) $Area_{1015-1050}$, and (J) $Area_{1110-1170}$ vs. \overline{EWT} (CWC/LAI) for maize during the growing seasons of 2013–2014. Figures 2 and 3 provide the definitions of acronyms.

CWC reflects not only the magnitude of the difference between FW and DW , but also the information related to canopy architecture, *i.e.*, LAI . To evaluate the effects of LAI on water content related VIs, the linear relationships between \overline{EWT} (*i.e.*, CWC/LAI) and ten VIs were also constructed, respectively (Figure 4). Among them, $CI_{red\ edge}$, CI_{green} and $NR_{red\ edge}$ showed the most sensitivity to the variation of \overline{EWT} . In addition, significantly linear relationships were also found between \overline{EWT} and $NDVI$, $Area_{680-780}$,

NDWI, WI, and LSWI (Figure 4). Figure 4 also shows that VIs had no saturation effects with increasing \overline{EWT} .

4. Discussion

4.1. Relationships between CWC and \overline{EWT} and Soil Moisture

Figure 5 shows relationships between CWC with \overline{EWT} and RSWC during the growing seasons of 2013 and 2014. These reflected the transfer of water stress between the soil and crop canopy, and the sensitivity of the soil and crop canopy to the variations in soil moisture when soil water conditions exhibited drought stress. Soil water was the main source of water needed for crop growth and development. No direct relationship was evident between CWC and RSWC (Table 5). However, soil moisture status, especially during the early stage of maize growth, is clearly a critical factor affecting the magnitude of CWC, which determines crop growth and development in the entire growing season. CWC presented a single peak seasonal trend in 2013 and 2014; however, the overall average level in 2013 was obviously higher than the same period in 2014. This occurred because 2013 had better soil water conditions than 2014. In addition, the starting dates of irrigation gradients was later in 2013 (24 July occurred at the seven-leaf stage) than in 2014 (1 July at the three-leaf period stage). Therefore, to explore the relationship between CWC and RSWC, not only soil moisture level, but also the starting dates of irrigation and its control levels should be comprehensively considered. When irrigation was initiated later, fewer effects were produced for crop growth and development.

\overline{EWT} (CWC/LAI) could reflect available leaf water conditions at the canopy level and was closely related to plant photosynthesis and the transfer of photosynthetic matter. Figure 5 shows that \overline{EWT} and RSWC were significantly related in both 2013 and 2014, although the relationship between CWC and RSWC was not significant in both 2013 and 2014. However, when comprehensively considering the data sets of these two years, the relationship between CWC and RSWC was significant, but RSWC could explain only 4.2% of the variation in CWC. However, RSWC determined 28.9% of the variation in \overline{EWT} and \overline{EWT} explained 21.7% of CWC. CWC-RSWC obviously exhibited a two-dimensional trapezoid space (Figure 5). This indicated that the pixels of crops that had been well-supplied with water and well-developed could reach the upper-right positions of this space. Although the maize plants were at the peak of growth, the plants were restricted by water deficiency. That is, CWC was also affected by crop developmental stages if crops were well-supplied with water (Figure 5). CWC was affected by both the stage of crop growth and development as well as by soil water conditions, and was located in the two dimensional coordinates of CWC-RSWC. In the CWC-RSWC two-dimensional trapezoidal space, the 2013 data sets with plants that were well-supplied with water and were well-developed lay in the upper-right of that space. The 2014 data sets had relatively less water and were more poorly-developed; these were located in the lower-left of the trapezoidal space (Figure 5). The sensitivity of CWC to the variation of soil water conditions was weakened because of the regulation of crop growth and development. In fact, the variation information related to CWC was an important biophysical property and was relatively easy to be monitored by remote sensing information. This study showed that the relationship between \overline{EWT} and RSWC was relatively stable, and RSWC could explain 23.5%–28.9% of the variation in \overline{EWT} , although the CWC- \overline{EWT} relationship varied with inter-annual water condition

status. The $CWC-\overline{EWT}$ relationship was weaker in a drier year, and there was no significantly linear relationship between CWC and \overline{EWT} in the drier year of 2014.

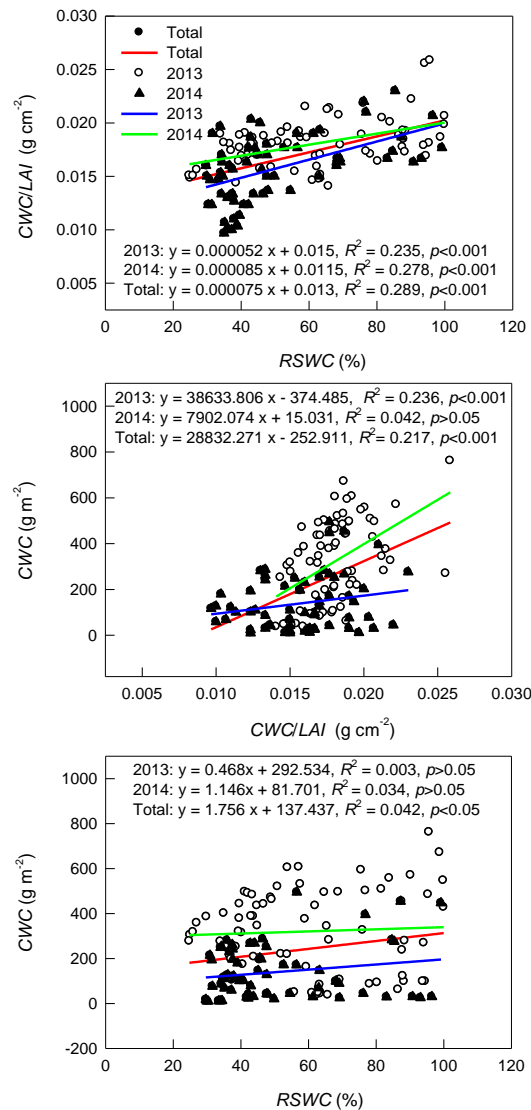


Figure 5. Relationships between CWC , \overline{EWT} (CWC/LAI), and $RSWC$ for maize during the growing seasons of 2013–2014. Figure 2 provides the definitions of acronyms.

4.2. Effects of Different Years on the Relationships between VIs with CWC and \overline{EWT}

Studies of the relationships between VIs with CWC and \overline{EWT} showed that in 2013 the most sensitive VIs were CI_{green} , $NR_{red\ edge}$, $Area_{680-780}$, and $LSWI$ for the variation of CWC and with $CI_{red\ edge}$, CI_{green} , and $NR_{red\ edge}$ for the variation of \overline{EWT} . In 2014, the most sensitive VIs were CI_{green} , $NR_{red\ edge}$, $Area_{680-780}$, and $LSWI$ for CWC and $CI_{red\ edge}$, CI_{green} , and $NR_{red\ edge}$ for \overline{EWT} . In addition, the most sensitive VIs were CI_{green} , $NR_{red\ edge}$, $Area_{680-780}$, and $CI_{red\ edge}$ for CWC and $CI_{red\ edge}$, CI_{green} , and $NR_{red\ edge}$ for \overline{EWT} when comprehensively considering both years. Therefore, at an inter-annual scale, different water control conditions did not affect the sensitivity of VIs to the variations of CWC and \overline{EWT} . Moreover, the differences of crop development resulted in stretching of CWC gradients. Therefore, the VIs- CWC relationships were more closely related. In this study, different irrigation treatments led to a wide range variation of CWC , including not only the well-developed crop canopy in the field control and the plot

control under well-supplied rainfed conditions, but also the less-developed crop canopy with dry and bare soils in drought-simulated conditions. In comparison, the relationships between CWC with CI_{green} , $CI_{\text{red edge}}$ and $NR_{\text{red edge}}$, as well as \overline{EWT} with CI_{green} , $CI_{\text{red edge}}$ and $NR_{\text{red edge}}$ in both 2013 and 2014 showed that the linear relationships in 2013 were more similar to that of 2013 plus 2014. Meanwhile, the CWC - CI_{green} , CWC - $CI_{\text{red edge}}$ and CWC - $NR_{\text{red edge}}$ relationships in 2014 were more notable than that in 2013. In contrast, the \overline{EWT} - CI_{green} , \overline{EWT} - $CI_{\text{red edge}}$ and \overline{EWT} - $NR_{\text{red edge}}$ relationships in 2013 were more closely related than those in 2014 (Figure 6). In addition, to some extent, Figure 6 shows that when CI_{green} was compared with $CI_{\text{red edge}}$ and $NR_{\text{red edge}}$, CI_{green} was not affected by different soil moisture conditions and different crop growth status. These differences resulted from the differences in soil water content, and more stably reflected the variation of CWC . However, $CI_{\text{red edge}}$ was the best sensitivity index for the variation of \overline{EWT} when compared with CI_{green} and $NR_{\text{red edge}}$.

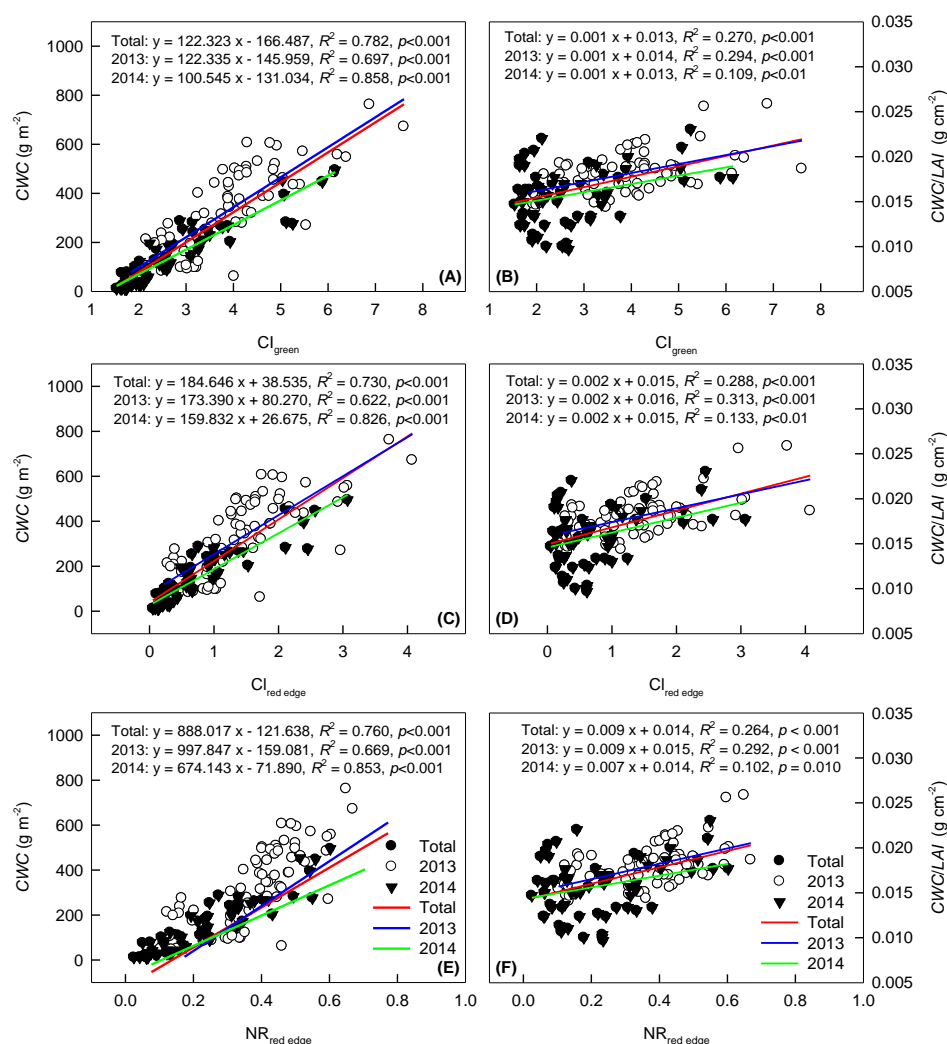


Figure 6. Relationships between CWC and \overline{EWT} (CWC/LAI) vs. CI_{green} , $CI_{\text{red edge}}$, and $NR_{\text{red edge}}$ for maize during the growing seasons of 2013–2014. (A) CWC - CI_{green} , (B) \overline{EWT} - CI_{green} , (C) CWC - $CI_{\text{red edge}}$, (D) \overline{EWT} - $CI_{\text{red edge}}$, (E) CWC - $NR_{\text{red edge}}$, and (F) \overline{EWT} - $NR_{\text{red edge}}$; Figures 2 and 3 provide the definitions of acronyms.

4.3. Performance of Various Indices for Indicating CWC and \overline{EWT}

Based on the wide variation in CWC and \overline{EWT} and the corresponding observational datasets of their canopy reflectance spectra, the present study investigated the sensitivities of VIs to CWC and \overline{EWT} . The results showed that among the ten VIs tested, the most sensitive VIs were: $CI_{\text{green}} > NR_{\text{red edge}} > \text{Area}_{680-780} > CI_{\text{red edge}}$ for CWC. For \overline{EWT} they were: $CI_{\text{red edge}} > CI_{\text{green}} > NR_{\text{red edge}}$. In particular, the chlorophyll index CI_{green} was the best suited for CWC estimation although $CI_{\text{red edge}}$ was the best predictor for \overline{EWT} retrieval. In this study, the $CI_{\text{red edge}}$ was slightly less effective than CI_{green} when estimating CWC. In contrast, it was better than CI_{green} when assessing \overline{EWT} , but their predictive powers were also better. In view of the calculating equation, the algorithm for CI_{green} is retrieved from the contrast of near-infrared and green information, and is calculated by the following equation $(\rho_{750}/\rho_{550}) - 1$. However, the $NR_{\text{red edge}}$ was calculated as $(\rho_{750} - \rho_{710})/(\rho_{750} + \rho_{710})$ and is based on near-infrared and red edge information. In addition, $CI_{\text{red edge}}$ and $NR_{\text{red edge}}$ were actually based on the same spectral information, with a longer spectral domain (750 nm) and shorter range (710 nm) in red edge region; they only had different algorithm formations. Studies have shown that empirical models used for the prediction of chlorophyll content are largely based on the reflectance at near 550 nm or 700 nm where higher chlorophyll content is required to saturate the absorption wavelength. Therefore, indices formulated with these bands had better estimation accuracy [21]. That is, when spectral information around 750 nm remained consistent, reflectance near 550 nm in the green region and red edge region at 710 nm were more difficult to saturate at the absorption wavelength than reflectance around 680 nm. Therefore, VIs based on these spectral data could effectively improve the accuracy for the estimate of chlorophyll, LAI and biomass [21]. Viña *et al.* [15] showed that $CI_{\text{red edge}}$ was the only index that was not sensitive to crop type (maize and soybean) among the indices they tested (CI_{green} , $CI_{\text{red edge}}$, and the MERIS Terrestrial Chlorophyll Index). Therefore, it was a suitable and accurate index for the remote estimation of green LAI. Additionally, studies showed that $NR_{\text{red edge}}$ was the best index for the estimation of $fAPAR$ [17]. In fact, studies usually showed that when estimating vegetation canopy biophysical properties the performances of CI_{green} and $CI_{\text{red edge}}$ were basically consistent. However, in this study the prediction of CI_{green} for CWC was better than that of $CI_{\text{red edge}}$ (Figure 7). Although the sensitivities of R_{710} to the variations of CWC and \overline{EWT} were more obvious than those of R_{550} , CI_{green} was still the most suitable index for estimating CWC (Figure 7). In addition, $CI_{\text{red edge}}$ was the most sensitive index for retrieving \overline{EWT} . This study demonstrated that the chlorophyll indices CI_{green} and $CI_{\text{red edge}}$ and the normalized index ($NR_{\text{red edge}}$) were good predictors of both CWC and \overline{EWT} .

Water exhibits a number of absorption features in the wavelengths of optical radiation, notably around 970, 1200, 1450, and 1950 nm. Among them, the features at 1450 and 1950 nm are the most pronounced. However, strong water vapor absorption in the atmosphere reduces the effectiveness of these spectral information to essentially zero [6,44]. Studies have been conducted on the remote estimation of CWC using first derivative reflectance spectra, spectral reflectance indices, and continuum removed spectra analysis. However, this study tried to concentrate on whether the normalized reflectance curve area index was suitable for estimating CWC and \overline{EWT} . Ren *et al.* [41] showed that the performance of the normalized red-edge reflectance curve area in the 680–780 nm region was better when used to estimate green aboveground biomass in arid and semi-arid areas. In this study, gradient irrigation treatments resulted in different levels of drought stress. The crop canopy appeared to be sparse

and less-developed; therefore, here we introduced $\text{Area}_{680-780}$ and tested its performance for estimating a wide range variation of CWC and \overline{EWT} . Clevers *et al.* [6] showed that the derivative of the reflectance on the right slope of the canopy water absorption feature at 970 nm can best be used for estimating CWC . Furthermore, Clevers *et al.* [25] showed that the first derivative over the 1015–1050 nm interval and the right slope of the 970 nm water-absorption band can be used for estimating CWC . Based on the algorithm method of $\text{Area}_{680-780}$, this study newly constructed $\text{Area}_{1015-1050}$ and $\text{Area}_{1110-1170}$ on the right and left slopes of the canopy water absorption feature at 970 and 1200 nm, respectively. This study showed that the linear relationship between $\text{Area}_{680-780}$ and CWC was the third best, only being inferior to CI_{green} and $\text{NR}_{\text{red edge}}$. However, it had the best logarithmic relationship. In comparison, the prediction ability of the three area-based VIs for the variation of CWC showed that with increasing CWC , the sensitivity was successively greater as expressed best by $\text{Area}_{680-780} > \text{Area}_{1015-1050} > \text{Area}_{1110-1170}$. This result demonstrated that the canopy water information at the red edge of 680–780 nm was more pronounced than that of the right or left slopes of the canopy water absorption feature at 970 nm or 1200 nm, respectively. Certainly, it is worth noticing that $\text{Area}_{680-780}$ still had a saturated inclination at moderate-high vegetation conditions in the actual application. Ren *et al.* [41] provides a good example of the reason this occurs, showing that $\text{Area}_{680-780}$ is better in sparsely vegetated conditions. It was also demonstrated that $\text{Area}_{680-780}$ had better predictive power for the variation in \overline{EWT} compared with $\text{Area}_{1015-1050}$ and $\text{Area}_{1110-1170}$ (Figure 4). However, this study still indicated that the normalized reflectance curve area indices were actually more suited for estimation of biomass or LAI rather than \overline{EWT} .

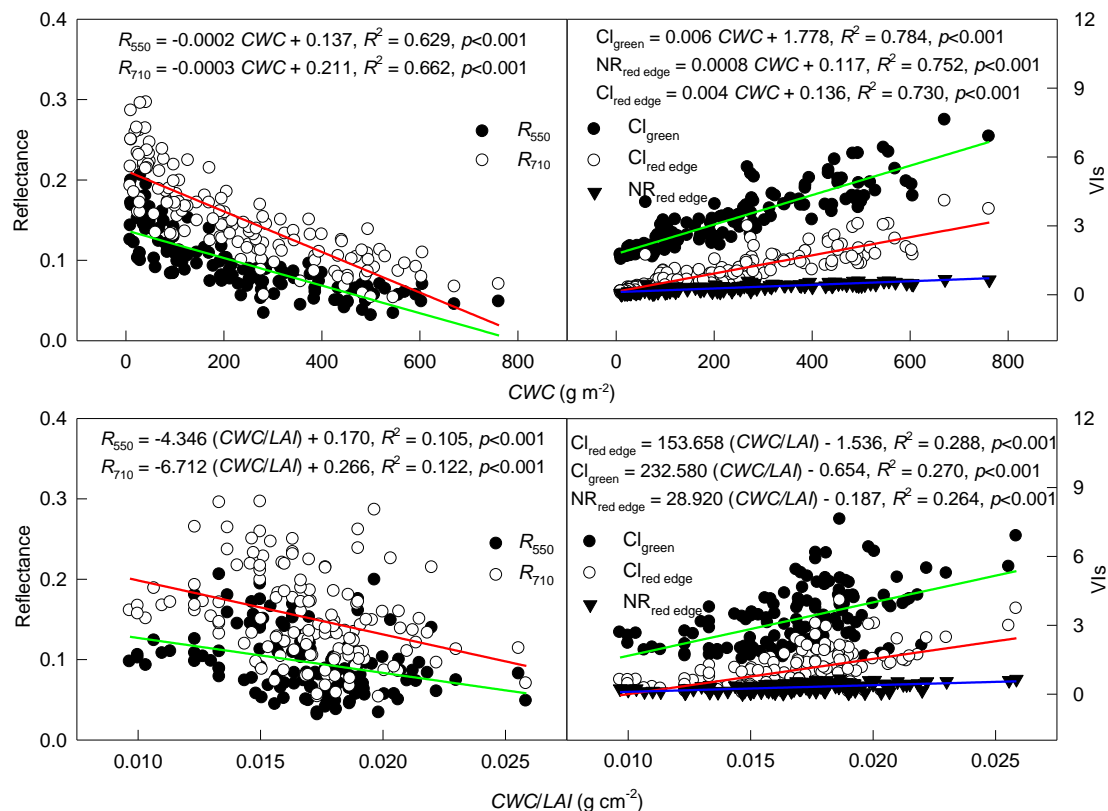


Figure 7. Relationships between CWC and \overline{EWT} (CWC/LAI) vs. reflectance (R_{550} and R_{710}) and CWC and \overline{EWT} (CWC/LAI) vs. VIs (CI_{green} , $\text{CI}_{\text{red edge}}$, and $\text{NR}_{\text{red edge}}$) for maize during the growing seasons of 2013–2014. Figures 2 and 3 provide the definitions of acronyms.

This study was a new exploration of the chlorophyll indices (CI_{green} and $CI_{\text{red edge}}$) and the normalized index ($NR_{\text{red edge}}$). We tested to see whether the chlorophyll indices and $NR_{\text{red edge}}$ that had previously proved to be well suited for monitoring chlorophyll content, LAI , $fAPAR$, and biomass could perform well when monitoring vegetation status and stress, especially in relation to water stress, and allow us to obtain satisfactory results. Eventually, this study revealed that the cause of the saturation effects of VIs in relation to the variation of CWC at middle to high vegetation conditions was the effects of LAI , but not because of the effects of water information. Moreover, this study also showed that CI_{green} could explain 78.4% of the variation in CWC and only 27.0% of variation in \overline{EWT} , *i.e.*, CWC/LAI . In addition, $CI_{\text{red edge}}$ explained 73.0% of the variation in CWC and 28.8% of variation in \overline{EWT} , and $NR_{\text{red edge}}$ explained 75.3% of CWC and 26.4% of \overline{EWT} , which demonstrated that around 44.2%–51.4% of the variation in CWC explained by spectral information was derived from the variation in LAI . It is well known that LAI and CWC are very highly correlated, this study emphasized again that LAI determined most of the variation in CWC .

5. Conclusions

In this study, the performances of ten water content related VIs were examined when used to estimate CWC and \overline{EWT} . We found that: (1) ten VIs showed great sensitivity to a wide range of variation in CWC , and indicated relatively weak sensitivity to the variation in \overline{EWT} ; (2) the chlorophyll indices (CI_{green} and $CI_{\text{red edge}}$) and the normalized index ($NR_{\text{red edge}}$) were the most sensitive VIs to the variations in CWC and \overline{EWT} ; (3) simulated drought under *in situ* conditions in two differently managed irrigation years did not distinctly affect the sensitivity of VIs to the variations of CWC and \overline{EWT} ; however, the degree of correlation for the relationship models changed; and (4) the CWC - $RSWC$ two-dimensional trapezoidal space clearly revealed that CWC was not only closely related with soil water status but also was determined by crop growth and development stages; and (5) nearly half of the variation in CWC explained by spectral information was derived from the variation in LAI .

Inevitably, crop canopy biophysical properties were obviously interrelated. However, estimation of CWC using hyperspectral remote sensing data was determined by spectral information from three aspects of crop growth: crop greenness (chlorophyll), canopy architecture (LAI) and \overline{EWT} . Therefore, in the future, when constructing models for estimating CWC , we should not only take into account spectral information sensitivity to the variation of canopy greenness and \overline{EWT} , but also understand the stages of crop growth and development.

Acknowledgements

This research was supported by National Natural Science Foundation of China (41330531). We acknowledge Gucheng Ecological and Agricultural Meteorology Station, Chinese Academy of Meteorological Sciences for providing convenient experiment facilities. We thank Juntun Zhang from Beijing Normal University for his fruitful discussion and Zhenzhu Xu for his critical suggestions. We also thank Yanling Jiang, Xueyan Ma, Yaohui Shi, Huailin Zhou, Minzheng Wang, Qiuling Wang, Yuhe Ji, Tao Liu, and Jun Tang for their help during field work. We are grateful to the editors and anonymous reviewers for their constructive comments on the earlier version of the manuscript.

Author Contributions

Guangsheng Zhou and Feng Zhang conceived and designed the research; Feng Zhang performed the experiments; Feng Zhang and Guangsheng Zhou analyzed the data and wrote the manuscript.

Conflicts of Interest

The authors declare no conflicts of interest.

References

1. Carter, G.A. Responses of leaf spectral reflectance to plant stress. *Am. J. Bot.* **1993**, *80*, 239–243.
2. Peñuelas, J.; Gamon, J.A.; Fredeen, A.L.; Merino, J.; Field, C.B. Reflectance indices associated with physiological changes in nitrogen and water limited sunflower leaves. *Remote Sens. Environ.* **1994**, *48*, 135–146.
3. Stimson, H.C.; Breshears, D.D.; Ustin, S.L.; Kefauver, S.C. Spectral sensing of foliar water conditions in two co-occurring conifer species: *Pinus edulis* and *Juniperus monosperma*. *Remote Sens. Environ.* **2005**, *96*, 108–118.
4. Peñuelas, J.; Filella, I.; Biel, C.; Serrano, L.; Save, R. The reflectance at the 950–970 nm region as an indicator of plant water status. *Int. J. Remote Sens.* **1993**, *14*, 1887–1905.
5. Yi, Q.; Wang, F.; Bao, A.; Jiapaer, G. Leaf and canopy water content estimation in cotton using hyperspectral indices and radiative transfer models. *Int. J. Appl. Earth Obs.* **2014**, *33*, 67–75.
6. Clevers, J.G.P.W.; Kooistra, L.; Schaepman, M.E. Using spectral information from the NIR water absorption features for the retrieval of canopy water content. *Int. J. Appl. Earth Obs.* **2008**, *10*, 388–397.
7. Rollin, E.M.; Milton, E.J. Processing of high spectral resolution reflectance data for the retrieval of canopy water content information. *Remote Sens. Environ.* **1998**, *65*, 86–92.
8. Running, S.W.; Gower, S.T. Forest-BGC, a general model of forest ecosystem processes for regional applications II. Dynamic carbon allocation and nitrogen budgets. *Tree Physiol.* **1991**, *9*, 147–160.
9. Running, S.W.; Nemani, R.R. Regional hydrologic and carbon balance responses of forests resulting from potential climate change. *Climatic Change* **1991**, *19*, 349–368.
10. De Jong, S.M.; Addink, E.A.; Doelman, J.C. Detecting leaf-water content in Mediterranean trees using high-resolution spectrometry. *Int. J. Appl. Earth Obs.* **2014**, *27*, 128–136.
11. Ustin, S.L.; Roberts, D.A.; Gamon, J.A.; Asner, G.P.; Green, R.O. Using imaging spectroscopy to study ecosystem processes and properties. *BioScience* **2004**, *54*, 523–534.
12. Chuvieco, E.; Riancho, D.; Aguado, I.; Cocero, D. Estimation of fuel moisture content from multi temporal analysis of Landsat Thematic Mapper reflectance data: Applications in fire danger assessment. *Int. J. Remote Sens.* **2002**, *23*, 2145–2162.
13. Yilmaz, M.T.; Hunt, E.R., Jr.; Goins, L.D.; Ustin, S.L.; Vanderbilt, V.C.; Jackson, T.J. Vegetation water content during SMEX04 from ground data and Landsat 5 Thematic Mapper imagery. *Remote Sens. Environ.* **2008**, *112*, 350–362.

14. Gitelson, A.A.; Viña, A.; Arkebauer, T.J.; Rundquist, D.C.; Keydan, G.; Leavitt, B. Remote estimation of leaf area index and green leaf biomass in maize canopies. *Geophys. Res. Lett.* **2003**, *30*, doi:10.1029/2002GL016450.
15. Viña, A.; Gitelson, A.A.; Nguy-Robertson, A.L.; Peng, Y. Comparison of different vegetation indices for the remote assessment of green leaf area index of crops. *Remote Sens. Environ.* **2011**, *115*, 3468–3478.
16. Nguy-Robertson, A.L.; Peng, Y.; Gitelson, A.A.; Arkebauer, T.J.; Pimstein, A.; Herrmann, I.; Karnieli, A.; Rundquist, D.C.; Bonfil, D.J. Estimating green LAI in four crops: Potential of determining optimal spectral bands for a universal algorithm. *Agric. For. Meteorol.* **2014**, *192*, 140–148.
17. Viña, A.; Gitelson, A.A. New developments in the remote estimation of the fraction of absorbed photosynthetically active radiation in crops. *Geophys. Res. Lett.* **2005**, *32*, doi:10.1029/2005GL023647.
18. Zhang, F.; Zhou, G.; Nilsson, C. Remote estimation of the fraction of absorbed photosynthetically active radiation for a maize canopy in Northeast China. *J. Plant Ecol.* **2015**, *8*, 429–435.
19. Gitelson, A.A.; Viña, A.; Ciganda, V.; Rundquist, D.C.; Arkebauer, T.J. Remote estimation of canopy chlorophyll content in crops. *Geophys. Res. Lett.* **2005**, *32*, doi:10.1029/2005GL022688.
20. Wu, C.; Niu, Z.; Tang, Q.; Huang, W. Estimating chlorophyll content from hyperspectral vegetation indices: Modeling and validation. *Agric. For. Meteorol.* **2008**, *148*, 1230–1241.
21. Wu, C.; Niu, Z.; Tang, Q.; Huang, W.; Rivard, B.; Feng, J. Remote estimation of gross primary production in wheat using chlorophyll-related vegetation indices. *Agric. For. Meteorol.* **2009**, *149*, 1015–1021.
22. Peng, Y.; Gitelson, A.A. Application of chlorophyll-related vegetation indices for remote estimation of maize productivity. *Agric. For. Meteorol.* **2011**, *151*, 1267–1276.
23. Zhang, F.; Zhou, G. Estimating canopy photosynthetic parameters in maize field based on multi-spectral remote sensing. *Chin. J. Plant Ecol.* **2014**, *38*, 710–719.
24. Colombo, R.; Meroni, M.; Marchesi, A.; Busetto, L.; Rossini, M.; Giardino, C.; Panigada, C. Estimation of leaf and canopy water content in poplar plantations by means of hyperspectral indices and inverse modeling. *Remote Sens. Environ.* **2008**, *112*, 1820–1834.
25. Clevers, J.G.P.W.; Kooistra, L.; Schaepman, M.E. Estimating canopy water content using hyperspectral remote sensing data. *Int. J. Appl. Earth Obs.* **2010**, *12*, 119–125.
26. Mirzaie, M.; Darvishzadeh, R.; Shakiba, A.; Matkan, A.A.; Atzberger, C.; Skidmore, A. Comparative analysis of different uni- and multi-variate methods for estimation of vegetation water content using hyper-spectral measurements. *Int. J. Appl. Earth Obs.* **2014**, *26*, 1–11.
27. Darvishzadeh, R.; Atzberger, C.; Skidmore, A.; Schlerf, M. Mapping grassland leaf area index with airborne hyperspectral imagery: A comparison study of statistical approaches and inversion of radiative transfer models. *ISPRS J. Photogramm. Remote Sens.* **2011**, *66*, 894–906.
28. Atzberger, C.; Darvishzadeh, R.; Immitzer, M.; Schlerf, M.; Skidmore, A.; Le Maire, G. Comparative analysis of different retrieval methods for mapping grassland leaf area index using airborne imaging spectroscopy. *Int. J. Appl. Earth Obs.* **2015**, *43*, 19–31.
29. Zhang, F.; John, R.; Zhou, G.; Shao, C.; Chen, J. Estimating canopy characteristics of Inner Mongolia's grasslands from field spectrometry. *Remote Sens.* **2014**, *6*, 2239–2254.

30. Atzberger, C.; Guéif, M.; Baret, F.; Werner, W. Comparative analysis of three chemometric techniques for the spectroradiometric assessment of canopy chlorophyll content in winter wheat. *Comput. Electron. Agr.* **2010**, *73*, 165–173.
31. Ren, H.; Zhou, G. Estimating aboveground green biomass in desert steppe using band depth indices. *Biosyst. Eng.* **2014**, *127*, 67–78.
32. Tan, K.; Zhou, G.; Ren, S. Response of leaf dark respiration of winter wheat to changes in CO₂ concentration and temperature. *Chin. Sci. Bull.* **2013**, *58*, doi:10.1007/s11434-012-5605-1.
33. Li, B. Maize Drought Process and Its Dynamics Simulation. Master's Thesis, Chinese Academy of Meteorological Sciences, Beijing, China, 2014.
34. Ceccato, P.; Gobron, N.; Flasse, S.; Pinty, B.; Tarantola, S. Designing a spectral index to estimate vegetation water content from remote sensing data: Part 1—Theoretical approach. *Remote Sens. Environ.* **2002**, *82*, 188–197.
35. Danson, F.M.; Steven, M.D.; Malthus, T.J.; Clark, J.A. High-spectral resolution data for determining leaf water content. *Int. J. Remote Sens.* **1992**, *13*, 461–470.
36. Rouse, J.W.; Haas, R.H., Jr.; Schell, J.A.; Deering, D.W. *Monitoring the Vernal Advancement and Retrogradation (Green Wave Effect) of Natural Vegetation*; Progress Report RSC 1978-1; Remote Sensing Center, Texas A&M University: College Station, TX, USA, 1973.
37. Gitelson, A.A.; Merzlyak, M.N. Signature analysis of leaf reflectance spectra: Algorithm development for remote sensing. *J. Plant Physiol.* **1996**, *148*, 493–500.
38. Gao, B.C. NDWI—A normalized difference water index for remote sensing of vegetation liquid water from space. *Remote Sens. Environ.* **1996**, *58*, 257–266.
39. Jurgens, C. The modified normalized difference vegetation index (mNDVI)—A new index to determine frost damages in agriculture based on Landsat TM data. *Int. J. Remote Sens.* **1997**, *18*, 3583–3594.
40. Xiao, X.; Boles, S.; Liu, J.; Zhuang, D.; Froelking, S.; Li, C.; Salas, W.; Moore, B. Mapping paddy rice agriculture in southern China using multi-temporal MODIS images. *Remote Sens. Environ.* **2005**, *95*, 480–492.
41. Ren, H.; Zhou, G.; Zhang, X. Estimation of green aboveground biomass of desert steppe in Inner Mongolia based on red-edge reflectance curve area method. *Biosyst. Eng.* **2011**, *109*, 385–395.
42. Gitelson, A.A.; Merzlyak, M. Spectral reflectance changes associated with autumn senescence of *Asculus hippocastanum* and *Acer platanoides* leaves: Spectral features and relation to chlorophyll estimation. *J. Plant Physiol.* **1994**, *143*, 286–292.
43. Gitelson, A.A.; Viña, A.; Verma, S.B.; Rundquist, D.C.; Arkebauer, T.J.; Keydan, G.; Leavitt, B.; Ciganda, V.; Burba, G.G.; Suyker, A.E. Relationship between gross primary production and chlorophyll content in crops: Implications for the synoptic monitoring of vegetation productivity. *J. Geophys. Res.* **2006**, *111*, doi:10.1029/2005JD006017.
44. Curran, P.J. Remote sensing of foliar chemistry. *Remote Sens. Environ.* **1989**, *30*, 271–278.