

## NUMERICAL SIMULATION OF TURBULENT STEEL CEM® MOLD UNDER HIGH MASS FLOW CONDITION

J.Y. Hwang<sup>1\*</sup>, M.J. Cho<sup>1</sup>, B.G. Thomas<sup>2</sup> and S.M. Cho<sup>2</sup>

<sup>1</sup> Research Laboratory, POSCO, 20-26, Pokposarang-gil, Kwangyang, Korea

<sup>2</sup> Colorado School of Mines, 1500 Illinois St., Golden, CO 80401, USA

*Corresponding author: jyhwang@posco.com*

### Abstract

The POSCO has invented one of the most innovated steel manufacturing process called CEM® (Compact Endless casting & rolling Mill) which can continuously produce coils without cutting before the finishing mill. In this high throughput process between the casting and rolling processes, a material balance is essential. World-class throughput of CEM® has been achieved with high-speed casting technology (up to 8.0 m/min) and increased slab thickness (up to 100 mm). Many new advanced technologies are required to do this. For instance, instability of the meniscus in the mold is one of the important factors to be solved. Electro Magnetic Braking (EMBr) system has come into the spotlight to control mold surface profile and level fluctuations. Therefore, an accurate evaluation and improvement of EMBr is required. In this work, a numerical and experimental study was carried out to investigate high throughput conditions, to prepare for the next generation of CEM®. In order to effectively stabilize mold flow near the meniscus, a new SEN was designed, combined with a U-shaped EMBr invented by POSCO. The effect of EMBr current on the temperature in the mold is also studied. Numerical results are consistently agreed with plant measurements obtained using nail board tests. Stabilized mold level and temperature are the critical technologies needed to achieve stable casting operation.

### Introduction

A new process, CEM® which can produce ultra-thin hot coils was launched by POSCO in 2009 [1]. As reported by Hwang et al., this process features 80~100 mm thick slabs directly going through a roughing mill located just after the caster, being reduced down to 20mm thickness, and then going into a small scale induction heater and finally being manufactured into ultra-thin coils through the hot finishing mill [1]. The coils are continuously produced without cutting before the finishing mill in this process, so is called endless rolling. Thin-gauge coils can be produced with uniform material quality due to consistent material temperature along the whole length of each strip. The mass balance between the caster and rolling mill is very important. Thus, high-throughput casting technology has to be accomplished because the capability of the hot rolling mill is commonly greater than that of the caster. If casting speed is lower than a critical limit, heat loss during rolling part is increased, which leads to excessive rolling loads. Moreover, sufficient FM (Finishing Mill) coiling temperature has to be achieved for the grain structure of the coils not to become mixed. Therefore, the productivity of the caster in CEM® must be much higher than other casters. As shown in Fig. 1, the throughput per unit width of CEM® casters is the highest of all casting processes, including strip casters, thin slab casters, conventional casters and other ultra-thick slab casters. In addition, many producers desire increased production for other casters. Therefore, the stabilization of mold flow during high-speed casting operation is an important topic to be investigated.

Several investigations regarding this subject have been carried out in previous work. In particular, EMBr control of the flow fluctuations at the meniscus is known to improve the quality of the cast steel by reducing the penetration of non-metallic inclusions [2]. Three different EMBr configurations were studied: Local EMBr, EMBr Ruler, and FC Mold [3]. The nail board test is performed by dipping nails down through the slag layer and measuring the meniscus profile and velocity [3, 4]. The shape of the meniscus surface is also measured from oscillation mark profiles. Water modeling has difficulty to show the real flow of molten metal with EMBr in the mold [5]. Vogl et.al carried out not only numerical simulation but also experiments using the liquid metal GaInSn with a length scale of 1:8. It was reported that meniscus speed can be reduced from 0.2 to 0.09 m/sec with EMBr and a single SEN design combined with the installation of EMBr can offer new possibilities for extending the operational range. The transient fluid flow with argon gas was studied by nail board dipping test and Large Eddy Simulation (LES) coupled with the Lagrangian Discrete Phase Model (DPM) [6]. The dominant frequencies of jet flow were reported to be detected as 0.5-2.0Hz. Cho [7] investigated the effect of double-ruler EMBr on transient flow using a Reynolds Averaged Navier-Stokes (RANS) model coupled with Magnetohydrodynamics (MHD) and plant measurement using nail boards. The dominant frequency was observed at 0.03Hz. EMBr lowers the peaks in the level of power spectrum and decreases the level fluctuations near the SEN by 50%. LES is carried out with FC-Mold EMBr, which enables meniscus velocity to be decreased 0.5 to 0.3 m/sec and meniscus level to be reduced 12 to 1 mm [8]. Potential gradients in the Lorentz force term has to be discretized with great care along the boundary. Cho [9] developed a discretized method with second order accuracy, CIM, and showed



good agreement with the analytical solution for plane channel flow.

In this study, numerical analysis of mold flow was performed for high throughput casting at 8.4-8.7 ton / min. This is 45% larger than that of CEM® currently in operation, 6 ton/min. A new SEN for high throughput was developed and applied to quantitatively evaluate the meniscus level and flow velocity.

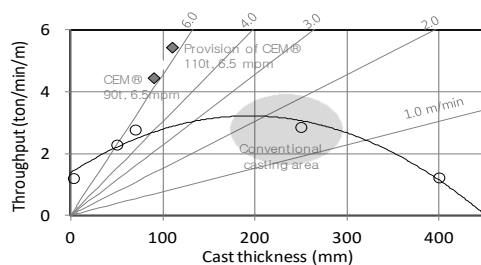


Fig. 1. Productivity related with cast thickness

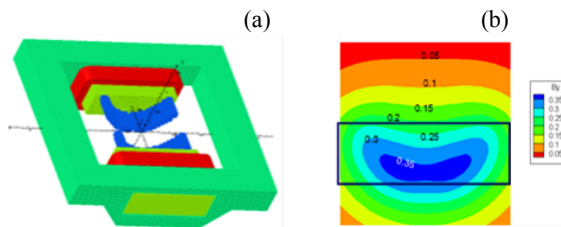


Fig. 2. Geometric configuration of CEM® EMBr, (a) schematic view, (b) magnetic field

### Numerical Method, Flow Evaluation Criteria and the effect of EMBr

The main numerical parameters are grid resolution, calculation domain and turbulence model. These parameters are strongly correlated with computational reliability and cost. For turbulence modelling, the  $k-\epsilon$  model is used with second order accuracy of spatial discretization. Through long experience with CEM® performance, two design criteria were chosen. That is, the maximum difference of meniscus level ( $\Delta H$ ) should be less than 8.8 mm to ensure stable operation and quality. The velocity on the meniscus is also important. If the velocity is too low, the local freezing of the meniscus and hook formation [10] may occur. On the other hand, abnormal high surface velocity leading to vortex formation [11] and instability at the interface between the molten steel and slag [12], could entrain slag into the molten steel pool, resulting in both surface and internal defects in the final steel product. Therefore, maximum velocity ( $V_{\max}$ ) range of 0.1-0.38 m/sec is determined to be an optimal velocity range.

Electromagnetic forces are applied to the flow field using EMBr. In order to effectively control the discharge from the SEN, we developed a U-shaped EMBr core as shown in Fig.2. In order to evaluate the present EMBr performance, calculations were carried out under conditions of a slab thickness of 90 mm, an average slab width of 1200 mm, and a casting speed of 6.5 m / min. This condition is conventional for currently performing endless rolling in CEM®. The magnetic field was set to 0.35T, obtained when the maximum current is applied. Figure 3 shows the computational results of the  $\Delta H$  and  $V_{\max}$  for the cases of with and without EMBr at each casting speed. When the EMBr is applied,  $\Delta H$  and the speed are controlled to about 50% and 65% compared with the case without EMBr, respectively.

Figure 4 shows velocity vectors and contours on the mid-section in the thickness direction when the magnetic field is applied with 0T and 0.35T. The red solid line represents the position of the EMBr core. The left side of the figure is the case without EMBr, where a secondary vortex with a large momentum is clearly observed compared to the right side of the figure with magnetic field 0.35T. One can notice that magnetic field make strong momentum diffusion happen, resulting in decrease of both  $\Delta H$  and  $V_{\max}$ .

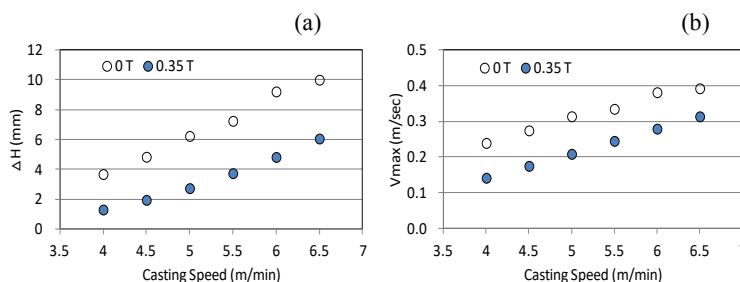


Fig. 3. Effects of casting speed and EMBr on: (a)  $\Delta H$ , (b)  $V_{\max}$

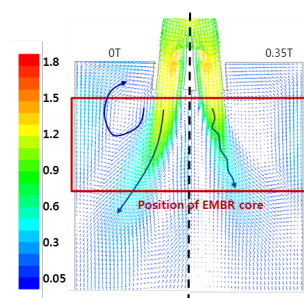


Fig. 4. Velocity vectors and contours

### Development of New SEN for High Throughput Operation

A new SEN was required to be developed for high throughput operation. The key technology is to increase the effective exit area of the SEN in order to decrease the velocity exiting the ports. In this study, we developed the new SEN design,

which widens the cross sectional area by 50% compared with a conventional nozzle. Figure 5 shows the meniscus level profile from the nozzle center to the edge for the existing and new SEN. Here, the dotted line indicates the case in which EMBr is not applied, and the solid line indicates the case with EMBr 0.35 T. In case of new SEN, it is found that the meniscus is controlled more effectively than the case of existing SEN, and EMBr is also a very useful tool for controlling the meniscus flow. Especially, if the new SEN is with EMBr,  $\Delta H$  can be controlled to about 30% of that with the current SEN without EMBr.

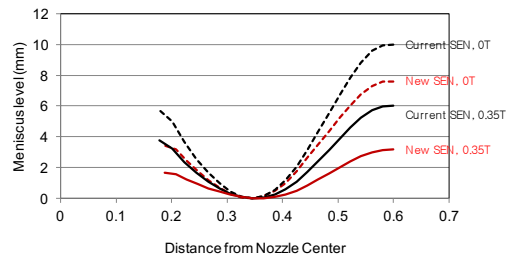


Fig. 5. Meniscus flow level of current SEN compared with new SEN, with and without EMBr

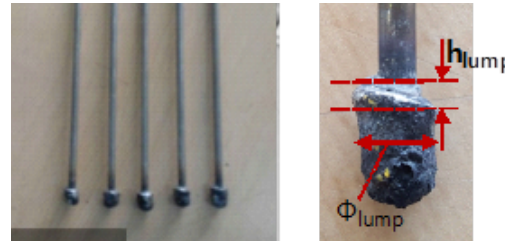


Fig. 6. Photos of the nail board test: overview of nails, lump solidified on a nail

### Plant Measurement

Nail board dipping tests, which are commonly used for convenient plant measurement of the meniscus level and velocity at Posco, were carried out to validate the calculation results in this work. Specifically, two sets of measurements using 5 STS nails with 370 mm length and 5 mm diameter were conducted, as shown in Fig. 6. If the lump height difference ( $h_{\text{lump}}$ ) is measured as shown, surface velocity ( $V_{\text{surface}}$ ) at each nail can be estimated from the following correlation [13] between  $h_{\text{lump}}$  and  $V_{\text{surface}}$  in eq. (1), where  $\Phi_{\text{lump}}$  means lump diameter.

$$V_{\text{surface}} = 0.624 \cdot (\Phi_{\text{lump}})^{-0.696} \cdot (h_{\text{lump}})^{0.567} \quad (1)$$

Figure 7 and 8 show the meniscus level and meniscus velocity distributions along the width direction from the center of SEN, respectively. The casting conditions are thickness 90 mm, width 1200 mm, casting speed 6.5 m/min and magnetic field 0.23 T using the new SEN. Figure 7 shows that the meniscus level is minimized in the middle region of the width direction. This is because the flow velocity of that part is maximized as shown in Fig. 8. Figure 7 represents the results of calculations are very consistent with those of the nail board tests and the averaged measured value of oscillation mark (OSM). The  $\Delta H$  is less than 8mm, indicating a stable meniscus distribution. The meniscus velocity from the nail board tests is obtained using equation (1) and is also in good agreement with the calculated results. Therefore, the numerical analysis used in this study is verified well. In particular,  $V_{\text{max}}$  is 0.35 m/sec, and we can expect stable casting operation.

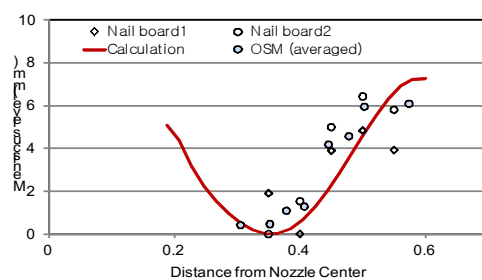


Fig. 7. Comparison of meniscus level : Calculation, nail board test and OSM

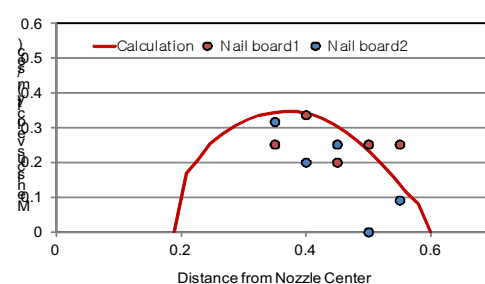
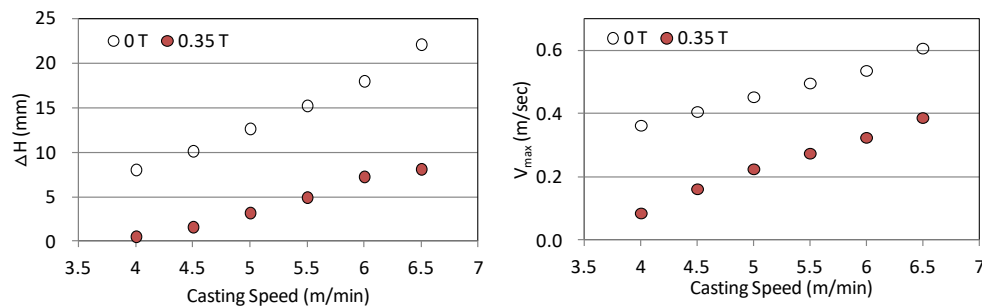


Fig. 8. Comparison of meniscus velocity : Calculation and nail board test

### Numerical Simulation for the High Mass Flow Condition

In this section, numerical simulations with high mass flow conditions are conducted. The new SEN combined with EMBr was applied to satisfy the two flow criteria mentioned in previous section. Figure 9 shows the  $\Delta H$  and  $V_{\text{max}}$  for the highest throughput case of which throughput is 8.7 ton/min, that is slab width of 1,600 mm and thickness of 110 mm with casting speed 6.5 m/min. If the magnetic field is not applied,  $\Delta H$  and  $V_{\text{max}}$  exceed the maximum criteria at 4.5 m/min. The meniscus velocity results are similar to those of  $\Delta H$ . On the other hand, if EMBr is applied, it can be seen that there is no problem in both meniscus level and velocity.

Fig. 9. Meniscus state for high throughput case C, (a)  $\Delta H$ , (b)  $V_{max}$ 

### Effect of EMBr on the Temperature on the Meniscus

The effect of EMBr current on the temperature in the mold is also studied in this section. As an temperature index,  $\Delta T$  was defined as the temperature difference between  $T_{meni}$  and liquidus temperature, where  $T_{meni}$  is average temperature obtained near the corner part on the meniscus. As casting speed and electro magnetic field increase, so does  $\Delta T$ . This can be explained from the fact that magnetic field make strong momentum and heat diffusion happen, resulting in increase of  $\Delta T$  as shown in Fig. 10.

Table 1. Effect of EMBr and Casting Speed on  $\Delta T$ 

Casting speed (m/min)	Electro magnetic field (T)	$\Delta T$ (°C)
4.0	0	+6.5
6.5	0	+7.0
	0.25	+7.6
	0.35	+8.0

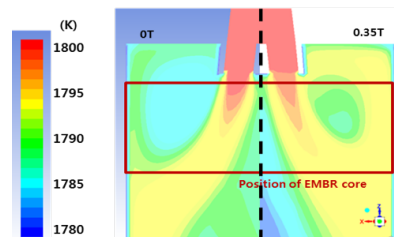


Fig. 10. Temperature Field

### Conclusion

In this study, numerical analysis of mold flow was performed for high throughput conditions, which are 45% larger than that used for the CEM® casting process currently in operation. A new SEN designed for high throughput was evaluated for the meniscus level and velocity combined with EMBr. In order to validate the numerical method and results, nail board dipping tests from plant measurements were carried out. Those tests are in good agreement with the calculated results. If electromagnetic field is increased, the meniscus is dramatically stabilized. With this knowledge, numerical simulations were conducted for shigh mass flow case, and it was found that using the new SEN combined with the current U-shaped EMBr design, stable meniscus level and velocity can be expected without any serious problems. The effect of EMBr current on the temperature in the mold is also studied. It was clearly found that themperature on the meniscus decreases as EMBr current increas.

### References

1. J.-Y. Hwang, S.-H. Lee, S.-Y. Kim and M.-C. Shin, METEC 2015, (2015, Dusseldorf, Germany)
2. A. Lehman, ABB Review 1 (1996), p.4
3. B. G. Thomas and R. Chaudhary, 6<sup>th</sup> Int. Conf. Electromagnetic Processing of Materials EPM (2009)
4. B. Rietow and B. G. Thomas, AISTech 2008, (2008, Pittsburgh, USA)
5. V. Norbert, O. Hans-Jurgen and R. Markus, 8<sup>th</sup> ECCC, Dusseldorf (2014)
6. S.-M. Cho, S.-H. Kim and B. G. Thomas, ISIJ Int. (2014, Vol. 54, No. 4), p. 845
7. S.-M. Cho, S.-H. Kim and B. G. Thomas, ISIJ Int. (2014, Vol. 54, No. 4), p. 855
8. R. Singh, B. G. Thomas and S. P. Vanka, Metallurgical and Materials Trans. B (2014, Vol. 45B), p. 1098
9. M. J. Cho, Numerical Heat Transfer (2006, Part B, 49), p.599
10. J. Sengupta, B. G. Thomas, H. Shin, G. Lee and S. Kim: Metall.Mater. Trans. A, 37A (2006), 1597.
11. S.-M. Cho, G.-G. Lee, S.-H. Kim, R. Chaudhary, O.-D. Kwon and B. G. Thomas: Proc. of TMS 2010, (2010), 71.
12. M. Iguchi, J. Yoshida, T. Shimizu and Y. Mizuno: ISIJ Int., 40 (2000), 685.
13. R. Liu, J. Sengupta, D. Crosbie, S. Chung, M. Trinh and B. Thomas: Proc. of TMS 2011, (2010)