

Mathematical Simulation of Contaminant Flow in Closed Reservoir

V M Agranat¹, A M Goudov², V A Perminov³

¹President, Applied computational fluid dynamics analysis, Thornhill, Ontario, Canada

²Dean of faculty, Kemerovo state university, Kemerovo, Russia

³Professor, Tomsk polytechnic university, Tomsk, Russia

E-mail: perminov@tpu.ru

Abstract. A mathematical model of the propagation in flooded mine lightweight contaminant due to allocation of groundwater is considered. Mathematical model was based on an analysis of experimental data and using concept and methods from reactive media mechanics. The boundary-value problem is solved numerically using the finite volume method. The distribution of fields of velocities and concentration of impurity particles in a flooded mine have been obtained at different times. These results can be used to analyze mining water treatment process due to environment and evaluate its further possible improvements.

1. Introduction

Water body pollution by mining and quarry waters is a typical problem for Kuzbass (Kemerovo region, Russia) and many other mining regions [1–3]. Mining waters usually contain particles of coal dust, clay, calcium compounds, magnesium, oil products, etc. Light substances (which density is less than water density) such as oil products accumulate on water surface while other particles remain suspended or sediment gradually. The problem of mining water treatment by pumping into abandoned mines and further use of it after precipitation of impurities (for heavy particles) or impurity floating up (for light particles) is of great interest. This methodology was presented in [4]. The model in this paper is based on laminar flow. In fact, estimates indicate that for a considered area is turbulent. The model which is being reported here is complex, and includes particles. The paper considers fluid flow containing impurity particles in a flooded mine.

2. Physical and mathematical setting

To analyze float impurities distribution a square form mine is under consideration. It has a ledge at the top (shown in figure 1).



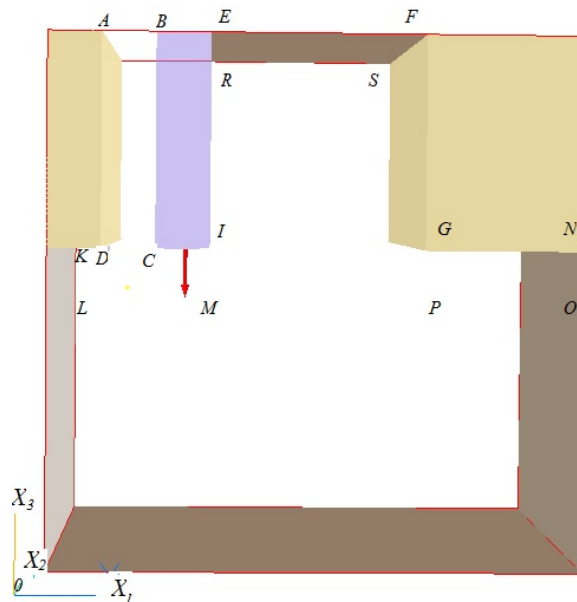


Figure 1. Computational domain scheme.

Mathematically the following differential equation system for turbulent flow should be solved in the following way:

$$\frac{\partial \rho}{\partial t} + \frac{\partial}{\partial x_j}(\rho u_j) = 0 \quad (1)$$

$$\frac{\partial}{\partial t}(\rho u_i) + \frac{\partial}{\partial x_j}(\rho u_i u_j) = -\frac{\partial p}{\partial x_i} + \frac{\partial}{\partial x_j}(-\rho \overline{u'_i u'_j}) - \rho S C_d u_i |\vec{u}| - \rho g_i, \quad (2)$$

$$\rho \left(\frac{\partial Y_k}{\partial t} + u_1 \frac{\partial Y_k}{\partial x_1} + (u_3 - u_{3k}) \frac{\partial Y_k}{\partial x_3} \right) = \frac{\partial}{\partial x_j}(-\rho \overline{Y'_k u'_j}), \quad (3)$$

$$\frac{\partial}{\partial t}(\rho k) + \frac{\partial}{\partial x_i}(u_i \rho k) = \frac{\partial}{\partial x_i} \left[\left(\frac{\mu_t}{\sigma_k} + \mu \right) \frac{\partial k}{\partial x_i} \right] - \mu_t \left(\frac{\partial u_i}{\partial x_j} + \frac{\partial u_j}{\partial x_i} \right) \frac{\partial u_i}{\partial x_j} - \beta \rho g_i \frac{\mu_t}{\text{Pr}} \frac{\partial T}{\partial x_i} - \rho \varepsilon, \quad (4)$$

$$\frac{\partial}{\partial t}(\rho \varepsilon) + \frac{\partial}{\partial x_i}(u_i \rho \varepsilon) = \frac{\partial}{\partial x_i} \left[\left(\frac{\mu_t}{\sigma_\varepsilon} + \mu \right) \frac{\partial \varepsilon}{\partial x_i} \right] + C_1 \frac{\varepsilon}{k} (G_k + G_B) - C_2 \rho \frac{\varepsilon^2}{k}, \quad (5)$$

$$p = \rho R_0 T \sum_k \frac{Y_k}{M_k}, \quad \vec{g} = (0, g), \quad u_{3k} = \frac{g d_k^2}{18\nu} \left(\frac{\rho_k}{\rho} - 1 \right). \quad (6)$$

Here, t , x_i – time and spatial coordinates ($i=1, 3$); u_i – velocity vector projection on the corresponding axis of Cartesian reference system, p – pressure; g – gravitational acceleration, R_0 – absolute gas constant, M_k – molecular weight of k – component, ρ – density of fluid and particles mixture, ν – kinematic viscosity coefficient, D_t – turbulent diffusion coefficient, d_k , ρ_k , u_{3k} – diameter, density and velocity of particle settling [5], Y_k – mass concentrations of k – component ($k=1$ – water, 2 – solid particles); $\mu_t = \rho C_\mu k^2 / \varepsilon$ – coefficient of turbulent viscosity, $k = \overline{u'_i u'_i} / 2$ – turbulent kinetic energy; ε – its dissipation, C_μ , \overline{C}_k , \overline{C}_ε , C_1 , C_2 – empirical constants, and G_k , G_B – turbulence caused by forced convection and natural convection.

3. Numerical solution and results

Based on mathematical formulation of the problems (1) – (6) numerical calculations were made to determine the pattern of float impurity distribution process in a flooded mine with the help of PHOENICS [6–7].

Vector fields of velocity and impurity distribution at different time moments were obtained as the result of numerical integration of equation system (1) - (5). Side walls are considered not to influence the impurity distribution process and fluid flow. Thus the problem is solved in the two-dimensional domain X_1OX_3 . A mine (length –10 meters horizontally, height-3 meters) is under consideration (figure 1.). Underground water without any impurity enters the domain. Impurity concentration equals 1 inside the domain. Particles size is $d_k = 5 \cdot 10^{-5}$ m. Impurity particles density is 500 kgs/m³ that is two times less than water density. The velocity of groundwater inflow from the upper layers is 0.1 m/s. Figure 2 shows the distribution of impurity concentration at different time moments.

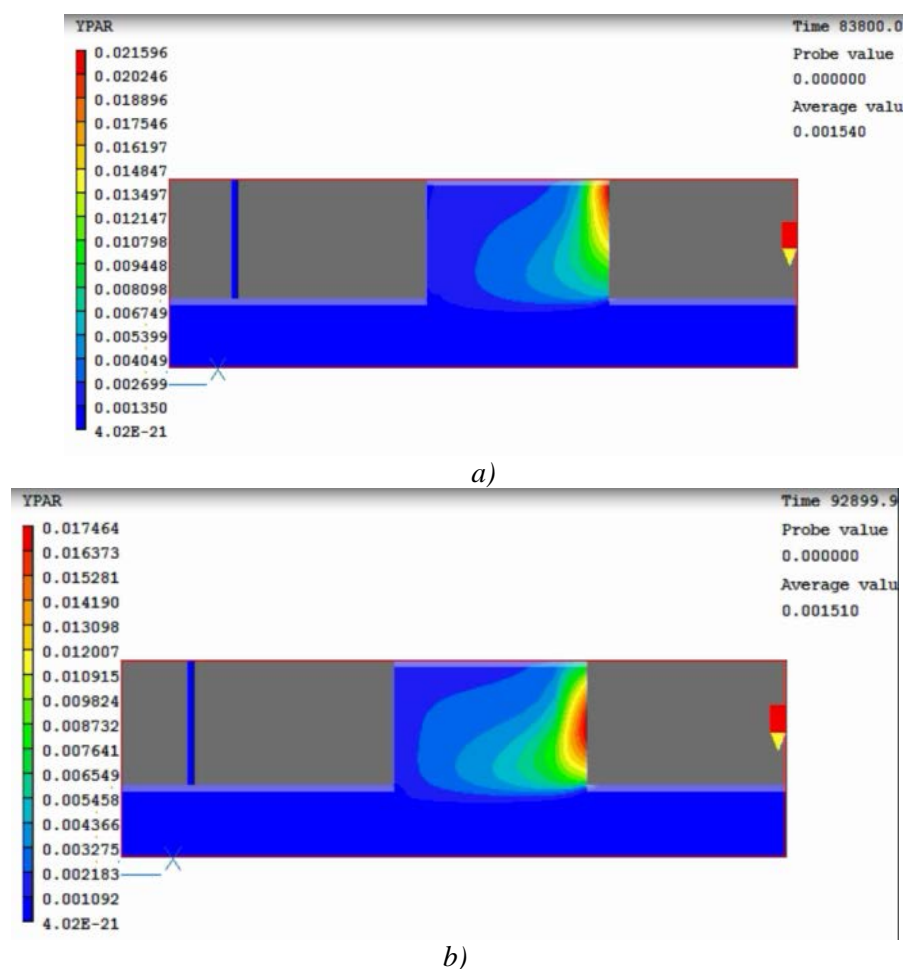


Figure 2. Impurity distribution: a) $t=83800$ sec, b) $t=92899$ sec.

Figure 2 shows, that as time goes some part of the impurities transferred by a flow leaves a mine, while the remaining part is moved to a dirt collector by a vortex. In case impurity particles density is halved (as little as 250 kgs/m³) the distributions of impurity are numerically calculated at different time moments (figures 3–5). These figures show that the flow becomes stable and impurities accumulate in the upper part of the domain as time goes. It happens faster compared with the previous case because the particles density is two times less.

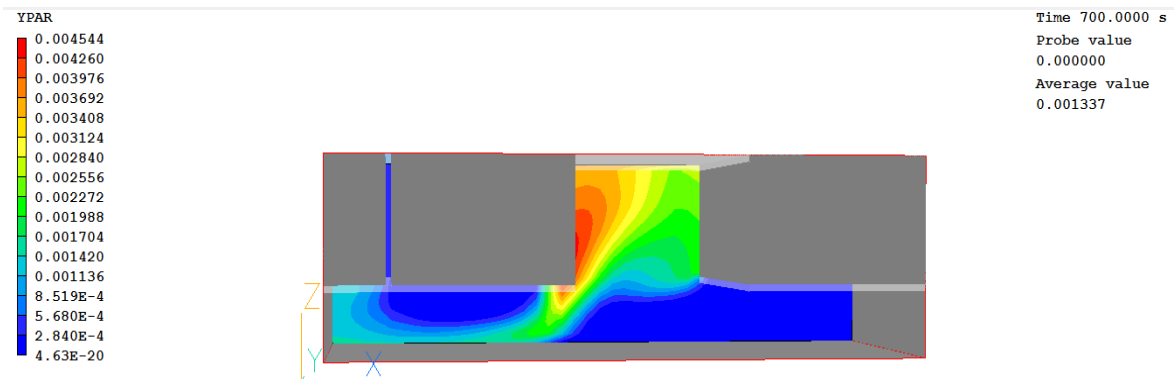


Figure 3. Distribution of impurity which density is 250 kg/m^3 ($t=700 \text{ sec}$).

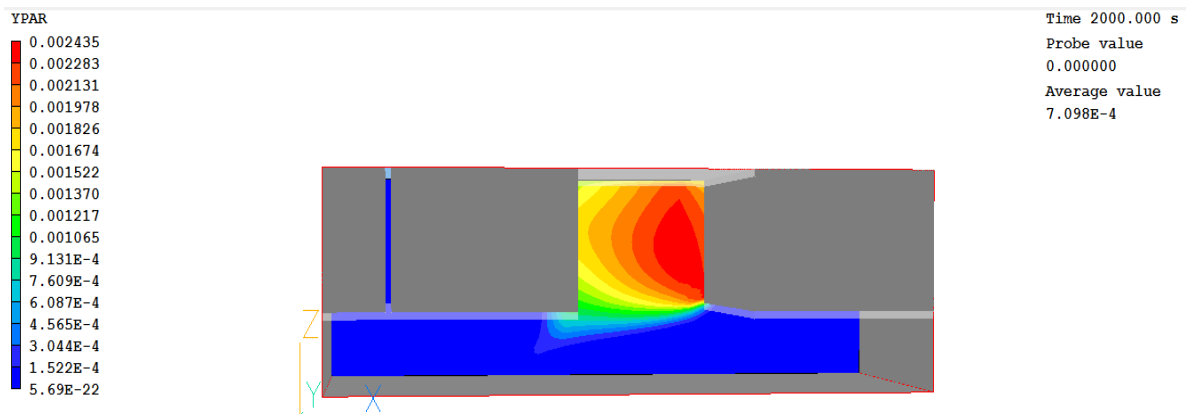


Figure 4. Distribution of impurity which density is 250 kg/m^3 ($t=2000 \text{ sec}$).

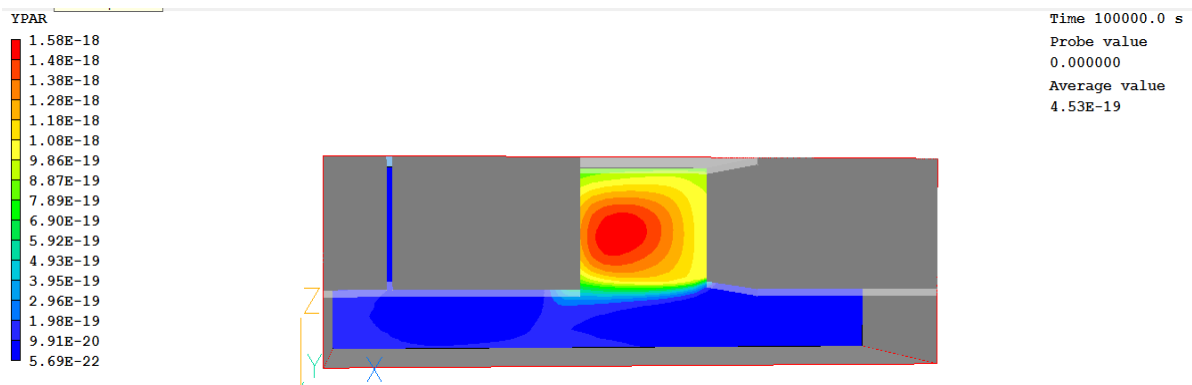


Figure 5. Distribution of impurity which density is 250 kg/m^3 ($t=10000 \text{ sec}$).

Later the inflow velocity was halved as compared with the previous case (0.05 m/s). When compare the results of impurity distribution (figures 6, 7) with the previous case at the same moment of time (figures 4, 5 correspondingly) it is obvious that the flow becomes stable and impurity concentration increases faster in the upper part of the domain.

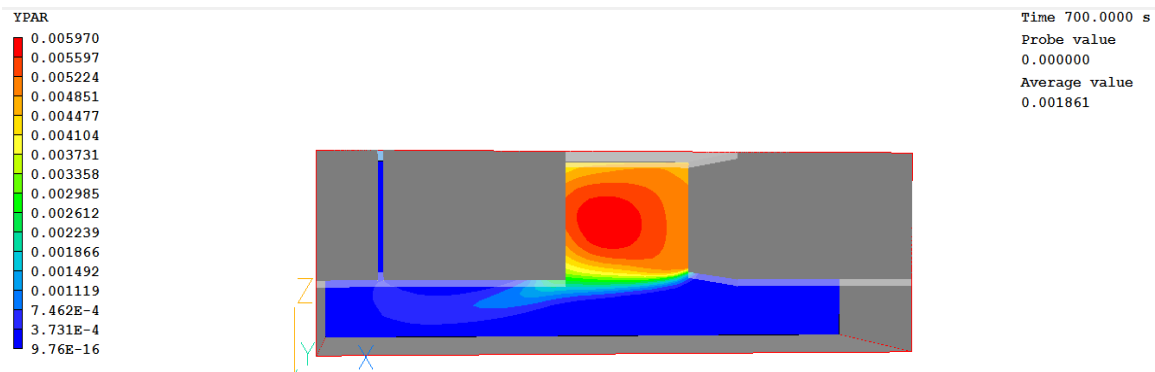


Figure 6. Impurity distribution ($t=700$ sec).

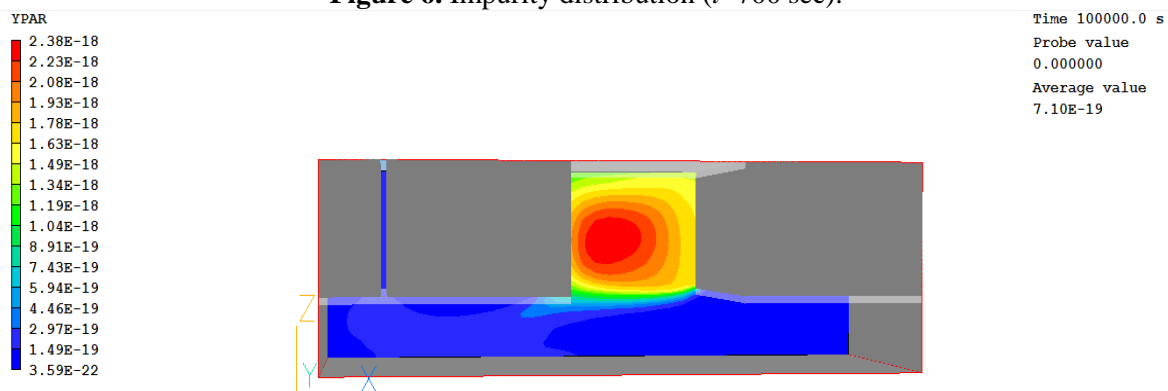


Figure 7. Impurity distribution in a flooded mine ($t=10000$ sec).

Based on the results of the numerical calculations, the way velocity of underground water inflow and parameters of impurity particles influence mining water treatment can be identified. The mathematical model presented in this paper can be used to analyze mining water treatment process due to environment and evaluate its further possible improvements.

The research is based on the state task № 2014/64, the state project “Scientific researches organization”. The results of the numerical calculations and problem formulation will be used by the educational resources information portal that offers students, postgraduate student and academic researches different educational services.

References

- [1] Morris B L, Lawrence A R L, Chilton P J C, Adams B, Calow R C and Klinck B A 2003 *Groundwater and its susceptibility to degradation: a global assessment of the problem and options for management* (United Nations Environment Programme, Nairobi, Kenya)
- [2] Gundula Prokop 2004 *Ground Water Management in Mining Areas 2004 Proceedings of the 2nd IMAGE-TRAIN Advanced Study Course* (Umweltbundesamt)
- [3] Adams R, Younger P L (2001) *Ground Water* 39(2) 249–261
- [4] Zakharov Y N, Potapov V P, Schastlivcev E L and Chiruykina A V (2009) *Vestnik NGU (Seriya “Informacionnye tekhnologii”)* 7(4) 66–72
- [5] Hinderliter P M *et al* 2010 *Particle and Fibre Toxicology* 7 Article number 36
- [6] Patankar S V 1981 *Numerical Heat Transfer and Fluid Flow* (New York: Hemisphere Publishing Corporation)
- [7] PHOENICS On-Line Information System: www.cham.co.uk/ChmSupport/polis.php