

Diagnosis of an actuated seat in a constrained space via Takagi-Sugeno sliding mode observers

Kamel Bouibed^a, Lynda Seddiki^a, Kevin Guelton^b and Herman Akdag^a

^aLIASD, EA 4383, University of Paris 8, Saint-Denis, France

^bCRéSTIC, EA 3804, University of Reims Champagne-Ardenne, Reims, France

E-mail: bouibed@ai.univ-paris8.fr

Abstract. This paper deals with actuator faults detection and isolation for an actuated seat described by Takagi-Sugeno multiple models. The goal is to ensure the comfort and the security of the users in simulator applications. Sliding mode observers based on T-S models are designed to estimate the system state vector. Residuals are generated by the comparison of measured and estimated outputs. In this work, a multi-observers technique is used. It consists of the construction of many observers such that each observer must be robust to noises and to other uncertainties but sensitive to one actuator fault. Simultaneous faults occurring on the actuated seat can be detected and isolated using this method. Simulation results are given to show the effectiveness of this approach.

1. Introduction

Nowadays, multimedia space simulators (flight simulator, automotive, video games ...) overgrown the field of new technologies. Users spend several hours a day on their chairs in front of the screens. For simulators, the user is in general installed on an articulated mobile platform equipped with an instrumented seat, a joystick and one or more wide-screen. For example, to be an efficient racing simulator, the user has to feel every sensation as in real situations, such as acceleration, braking or jumps.

In this study, which is part of an industrial project ¹, we are interested in the diagnostic of the seat for such applications. Indeed, the seat is instrumented in a confined space and it has to ensure the comfort and the security of the users. Such systems integrate actuators, sensors and embedded intelligent systems (control, optimization, supervision, ...) whose aim is to increase their performances. This context is motivating the present diagnostic study with application on an actuated seat which can be seen as a robot with tree structure. Due to high reliability demands of such systems, recent supervision and fault diagnosis concepts are of particular importance [16]. There are three main approaches to deal with fault diagnosis [15], [12], [19], [10], [2]:

- Signal analysis-based approach,
- Knowledge-based approach,

¹ Confidentiality has been contracted with the industrial company, therefore, its name and the studied application can not be provided in this paper. All the parts of this contract has read this paper and agreed to its publication.



- Model-based approach.

Model-based approaches to fault diagnosis in dynamic processes have received considerable attention since the beginning of the 70's, both in the research context and in the domain of application on real processes [16], [9], [14], [11]. These model-based fault diagnosis systems are structured on two levels:

- Residual generation: Its purpose is to generate a residual signal which is sensible to a fault.
- Decision making: The residuals are examined for the likelihood of a fault and a decision rule is then applied to determine if some fault appears.

Most of model-based fault diagnosis methods are based on linear system models. For nonlinear dynamic systems, the fault diagnosis problem has been traditionally analyzed in two steps: First, the model is linearized around an operating point, and second, some techniques are applied to generate signal-residual, e.g. Kalman filter, observers, parity relations, parameter estimation [12]. Among nonlinear observers, T-S fuzzy model-based approaches have become popular, because such models provide universal approximations of nonlinear systems. Therefore in the past few decades, T-S fuzzy models have been the subject of many theoretical studies (e.g. [24] [22]) and applications (e.g. [13], [20], [21]). The major interest of such modelling approaches is that they allow extending some linear observer or controller design methodologies to nonlinear systems. In this work, we consider the model-based approach and the technique used in [1], in order to deal with the fault diagnosis problem. The strategy is based on obtaining a Takagi-Sugeno (T-S) fuzzy model and then using sliding mode observers to estimate the system state vector; the residual signal is then generated by the comparison of the measured and the estimated outputs. Observers based diagnosis is a technique that has been much discussed in the literature [17], [4], [25], [10], [3]. Without the occurrence of a faults, the residuals are close to zero while they deviate significantly from zero upon the occurrence of a faults on the system. The detection of the faults is generally quite easy; however, their localization is more delicate. Therefore, one frequently uses multi-observers to generate the residuals, whose are analysed through logical decision rules to find the location of the faults.

The paper is organized as follows: In section 2, the dynamical model of the seat and the corresponding Takagi-Sugeno fuzzy model are described. In section 3, we design a fuzzy sliding mode observer for the actuator fault detection and isolation. In section 4, simulation results show the effectiveness of the approach.

2. Description and modelling of the actuated seat

In this paper we will consider the diagnostic of an empty actuated seat, depicted in figure 1. That is to say, without considering the interaction with the user, which can be considered as modelling uncertainties and external disturbances. Therefore, in this preliminary study, one assumes that the robustness of the following designed observers will handle such uncertainties. The actuated seat contains three actuated joints r_1 , θ_3 , θ_4 and one unactuated joint θ_2 , whose significations are given in Table 1 (r_1 is a prismatic joint, θ_i ($j = 2,3,4$) are rotary joints).

To synthesize the relevant observers, dynamical model of the seat is required. It is given as the following second order mechanical system :

$$J(q(t))\ddot{q}(t) + D(q(t), \dot{q}(t))\dot{q}(t) + G(q(t)) = u(t) \quad (1)$$

where $q(t) = [r_1 \ \theta_3 \ \theta_4]^T$ is the vector of generalized coordinates, $J(q(t))$ is the inertia matrix (symmetric and positive definite), $D(q(t), \dot{q}(t))$ is the matrix of Coriolis and centrifugal forces, $G(q(t))$ is the vector of gravitation and $u(t)$ is the vector of the generalized forces produced by

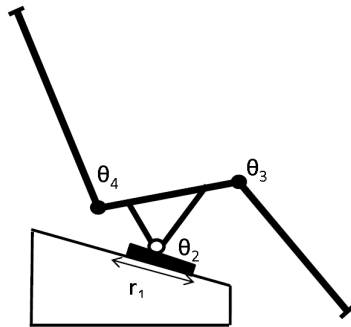


Figure 1. Different joints of the seat.

Table 1. Joints significations

r_1	Tracking position expressed in m
θ_2	Angle of the seating expressed in rad
θ_3	Angle of the legrest expressed in rad
θ_4	Angle of the seat-back expressed in rad

the actuators. The control input u is assumed to be given by some known feedback controllers. For lightening the mathematical expressions, the time t will be committed in the sequel when there is no ambiguity. The matrices of the model, obtained from the Lagrange formalism [18], are detailed as follows:

$$J(q) = \begin{bmatrix} M & (*) & (*) \\ m_3 L_3 \sin(\beta - \theta_{23}) & J_3 & 0 \\ -m_4 L_6 \sin(\beta - \theta_{24}) & 0 & J_4 \end{bmatrix}$$

$$D(q, \dot{q}) = \begin{bmatrix} 0 & -m_4 L_3 \cos(\beta - \theta_{23}) \dot{\theta}_3 & m_6 l_6 \cos(\beta - \theta_{24}) \dot{\theta}_4 \\ 0 & 0 & 0 \\ 0 & 0 & 0 \end{bmatrix}$$

$$G(q) = \begin{bmatrix} -Mg \cos \beta \\ -(gm_3 \frac{L_3}{2}) \sin(\theta_{23}) \\ -(gm_4 \frac{L_4}{2}) \sin(\theta_{24}) \end{bmatrix}$$

where $\theta_{23} = \theta_2 + \theta_3$; $\theta_{24} = \theta_2 + \theta_4$; M is the total mass of the seat; m_3 and m_4 are respectively the masses of the footrest and the headrest of the seat; L_3 and L_4 are respectively the lengths of the footrest and the headrest of the seat; β is the angle between the seat tracking axis and the horizontal plane; g is the gravitational acceleration.

Note that θ_2 is an unactuated joint, which is not considered as a generalized coordinate since it is geometrically linked to the prismatic joint r_1 by means of a guide (constrained regarding to the mechanical design of the seat). Therefore, the nonlinear relation between θ_2 and r_1 has

been approximated from experimental measurements (see Figure 2) as a third order polynomial given by:

$$\theta_2 = ar_1^3 + br_1^2 + cr_1 + e \quad (2)$$

where $a = -36.54$, $b = 1.079$, $c = 1.49$ and $e = 0.1$.

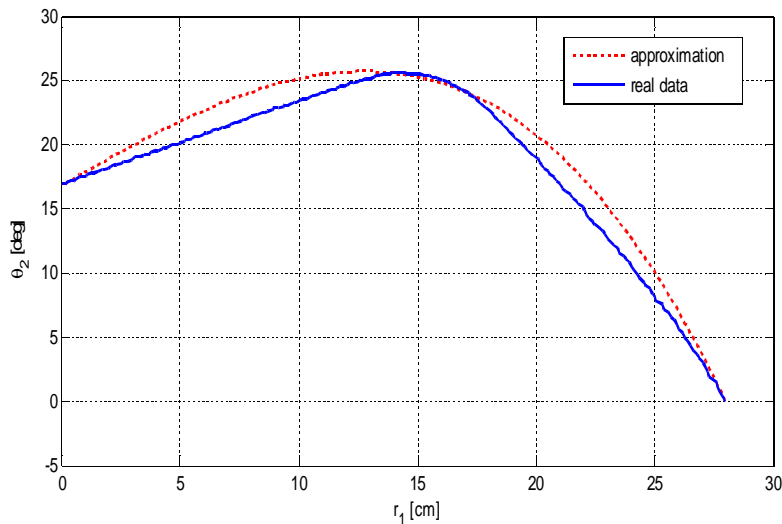


Figure 2. Approximation of θ_2 by a third order polynomial

2.1. State space dynamical model of the seat and Takagi-Sugeno modelling

Let us consider the state vector $x = [q \ \dot{q}]^T$ and the control input $u = [u_1 u_2 u_3]^T$, the model (1) can be rewritten as the following nonlinear state space model:

$$\begin{cases} \dot{x}(t) = A(q, \dot{q})x(t) + B(q)u(t) + Fd(t) \\ y(t) = Cx(t) \end{cases} \quad (3)$$

with

$$A(q, \dot{q}) = \begin{bmatrix} 0_3 & I_3 \\ -J(q)^{-1}\bar{G}(q) & -J^{-1}(q)D(q, \dot{q}) \end{bmatrix}$$

$$B = \begin{bmatrix} 0_3 \\ -J(q)^{-1} \end{bmatrix}$$

where $\bar{G}(q) \in R^{3 \times 3}$ is defined such that $G(q) = \bar{G}(q)q$; F and C are constant matrices of appropriate dimensions and $d(t)$ is an unknown input vector containing external disturbance or faults in the system.

Let us notice that all the nonlinear terms included in the matrices of the state space model (3) are bounded (since r_1 , θ_3 and θ_4 are physically bounded and chosen such that they do not cross zero) and given by: $f_{J_1} = \sin(\beta - \theta_{23})$, $f_{J_2} = \sin(\beta - \theta_{24})$, $f_{G_1} = \frac{1}{r_1}$, $f_{G_2} = \frac{\sin(\theta_{23})}{\theta_3}$, $f_{G_3} = \frac{\sin(\theta_{24})}{\theta_4}$, $f_{D_1} = \cos(\beta - \theta_{23})\dot{\theta}_3$ and $f_{D_2} = \cos(\beta - \theta_{24})\dot{\theta}_4$. Therefore, a Takagi-Sugeno model

(4), which exactly matches the nonlinear model (3), is obtained by applying the well-known sector nonlinearity approach [23].

$$\dot{x}(t) = \sum_{i=1}^r h_i(z(t)) (A_i x(t) + B_i u(t) + F d(t)) \quad (4)$$

where $z(t)$ is the premise vector assumed to depend only on the state variables, r is the number of fuzzy sets for the right-hand side of the system (4), respectively; $h_i(z(t)) \geq 0$ are the membership functions that satisfy the convex sum property: $\sum_{i=1}^r h_i(z(t)) = 1$.

Note that, the above described T-S model contains 64 rules, therefore the matrices constituting the local subsystems and the membership functions are not detailed here for space reason. The reader may refer to [23] for more details on how to apply the well-known sector nonlinearity approach. Nevertheless, to illustrate the effectiveness of proposed T-S modelling approach, simulations of the seat have been performed in Matlab/Simulink to show that the T-S fuzzy model of the seat represents perfectly the nonlinear model, see Figures 3, 4 and 5.

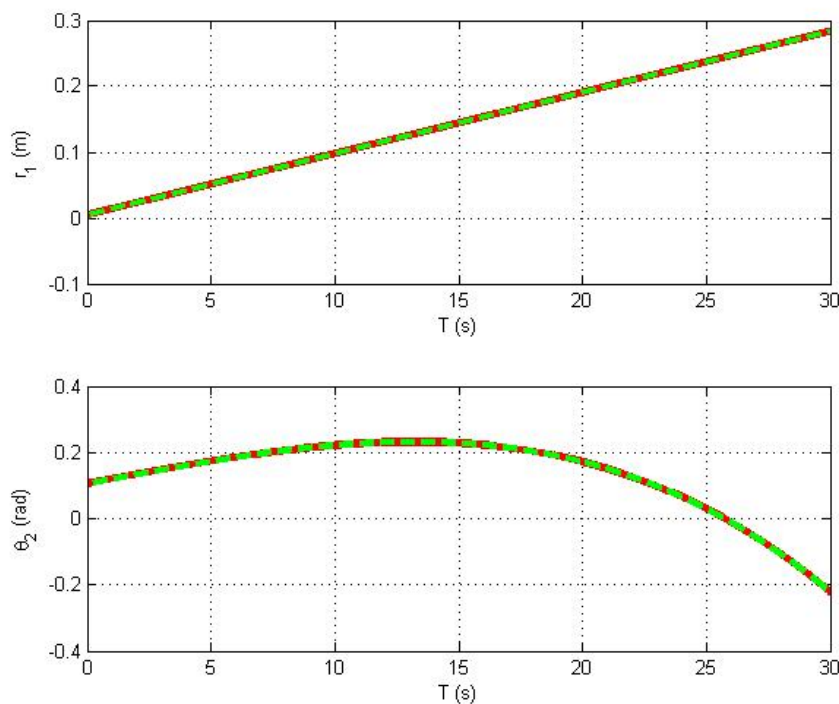


Figure 3. Comparison of the nonlinear model of the seat and its T-S model: tracking and seating position. — — T-S Model, — Nonlinear model

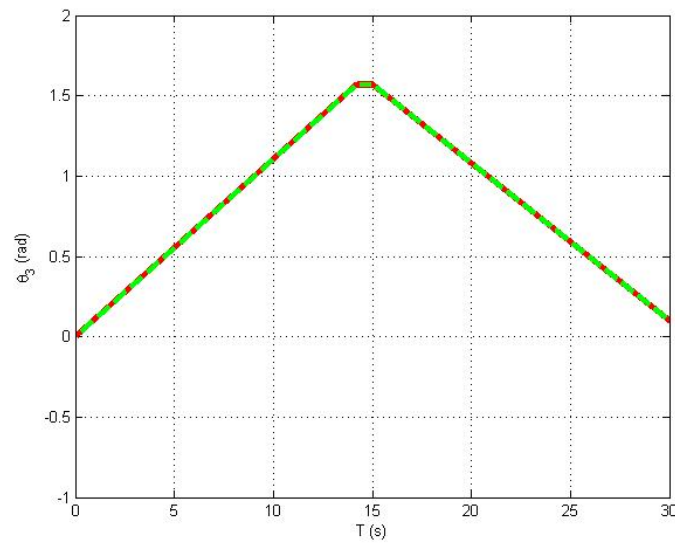


Figure 4. Comparison of the nonlinear model of the seat and its T-S model: legrest position. - - - T-S Model, — Nonlinear model

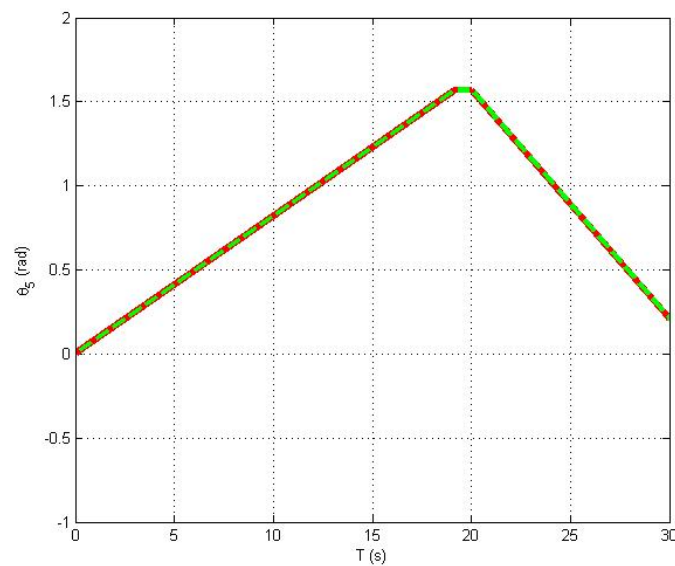


Figure 5. Comparison of the nonlinear model of the seat and its T-S model: seat-back position. - - - T-S Model, — Nonlinear model

3. Synthesis of the sliding mode observer

The goal is now to design convenient observers dedicated to the diagnosis of the seat actuators faults. From the model-based approach, it is necessary to build the mathematical model of the

system that is to be observed. In the general case of nonlinear dynamic systems, the design of observers is not an easy task. Therefore, in this work we consider the Takagi-Sugeno fuzzy model described in (4) and derived from (3).

It is assumed that the T-S fuzzy model (4) is locally observable and our goal is to design an observer such that $x(t) - \hat{x}(t) \rightarrow 0$ as $t \rightarrow \infty$, where $\hat{x}(t)$ denotes the estimated state vector. In this work, one considers an adaptation of the fuzzy sliding mode observer design methodology proposed in [8] to the T-S model of the actuated seat. This method uses a number of local linear time-invariant observers; each local model represented by (4) is associated with a local observer given as follows:

$$\begin{cases} \dot{\hat{x}}(t) = A_i \hat{x}(t) + B_i u(t) + F_i d(t) + L_i (y(t) - \hat{y}(t)) + \phi_i(t) \\ \hat{y}(t) = C_i \hat{x}(t) \end{cases} \quad (5)$$

where L_i is the observer gain and ϕ_i is the discontinuous vector of sliding mode which will be defined later.

By the use of the Parallel Distributed Compensation (PDC) technique [9], the total state estimation is the combination of local observer outputs.

$$\begin{cases} \dot{\hat{x}}(t) = \sum_{i=1}^r h_i(z(t)) \{A_i \hat{x}(t) + B_i u(t) + F_i d(t) + L_i (y(t) - \hat{y}(t)) + \phi_i(t)\} \\ \hat{y}(t) = \sum_{i=1}^r h_i(z(t)) C_i \hat{x}(t) \end{cases} \quad (6)$$

To analyze the convergence of this observer, the state estimation error $e(t) = x(t) - \hat{x}(t)$ dynamics is examined:

$$\dot{e}(t) = \dot{x}(t) - \dot{\hat{x}}(t) \quad (7)$$

Using (4) and (6), one can find:

$$\dot{e}(t) = \sum_{i=1}^r \sum_{j=1}^r h_i(z(t)) h_j(z(t)) [\bar{A}_{ij} e(t) + F_i d(t) - \phi_i(t)] \quad (8)$$

where $\bar{A}_{ij} = A_i - L_i C_j$.

One chooses the following Lyapunov function:

$$v(t) = e^T(t) P e(t) \quad (9)$$

Deriving:

$$\dot{v}(t) = e^T(t) P \dot{e}(t) + \dot{e}^T(t) P e(t) \quad (10)$$

Using (8), one finds:

$$\begin{aligned} \dot{v} &= e^T P \sum_{i=1}^r \sum_{j=1}^r h_i(z(t)) h_j(z(t)) (\bar{A}_{ij} e + F_i d - \phi_i) + \\ &\quad \sum_{i=1}^r \sum_{j=1}^r h_i(z(t)) h_j(z(t)) (\bar{A}_{ij} e + F_i d - \phi_i)^T P e \\ &= \sum_{i=1}^r \sum_{j=1}^r h_i(z(t)) h_j(z(t)) \left\{ e^T (P \bar{A}_{ij} + \bar{A}_{ij}^T P) e + 2e^T P F_i d - 2e^T P \phi_i \right\} \end{aligned} \quad (11)$$

Then:

$$\dot{v}(t) \leq -\gamma \|e(t)\|^2 + \sum_{i=1}^r \{2 \|e^T(t) P\| \|F_i d(t)\| - 2e^T(t) P \phi_i(t)\} \quad (12)$$

In order to have $\dot{v}(t) < 0$, we propose that the discontinuous term has the following form:

$$\phi_i(t) = k_i \text{sign}(e^T(t)P) = k_i \frac{e^T(t)P}{\|e^T(t)P\|} \quad (13)$$

where $k_i > 0$ is constant and $P > 0$ so that the following Lyapunov inequality is satisfied:

$$P\bar{A}_{ij} + \bar{A}_{ij}^T P < 0 \quad (14)$$

From this, $\lim_{t \rightarrow \infty} e(t) = 0$ if (12) and (13) are respected, therefore if:

$$2 \|e^T(t)P\| \sum h_i(z(t)) \{\|F_i d(t)\| - k_i\} < 0 \quad (15)$$

then one obtains the following condition:

$$k_i > \|F_i d(t)\| \quad (16)$$

Furthermore, it should be mentioned that an observer with converging state estimation is considered as a stable observer. Nevertheless, its stability may be checked, for validation purpose, from a well-known bounded real lemma (stability conditions) [23]. These conditions come from the inequalities (14), which can be efficiently solved via convex optimization algorithms within the linear matrix inequalities (LMI) framework [7]. Moreover, from the solution of such LMIs, the observer gains L_i can be obtained as in [1]. Hence, if a positive definite matrix P exists, the sliding mode fuzzy observer (6) is defined.

Finally, once the state or output is estimated, the residual signals are generated by the comparison of the measured and estimated output.

$$r(t) = y(t) - \hat{y}(t) \quad (17)$$

Therefore, analysing the residuals, one may detect and isolate actuator faults. Indeed, to detect and isolate the actuator faults, a set of three observers is used such that each observer is sensitive to one actuator fault [5], [6]. So the i^{th} observer will have as inputs y and \bar{u}_i which is the vector of inputs without the i^{th} input u_i . This structure is presented in Figure 6 for the actuator fault detection and isolation. In the considered seat, a set of three observers for each actuator is sufficient. Each observer generates one residual which is sensitive to only one actuator fault.

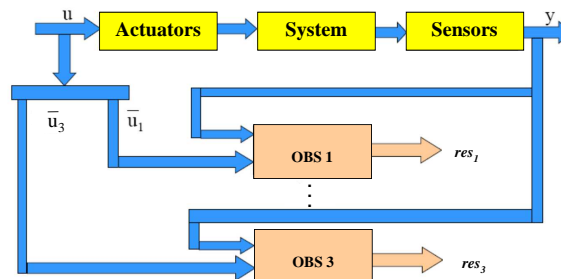


Figure 6. Multi-observers for actuator fault detection and isolation.

4. Simulation results

Simulations trials have been performed in the absence of faults, thresholds can be set on the basis of the maximum absolute values of the residuals. If some faults occur, they will cause deviations from zero of some residuals much greater than the differences caused by uncertainties and measurement noises. Thresholds should be chosen correctly in view to reduce the false alarms and the non detections. In our case, we assume that uncertainties and measurements noises do not have a great influence on the residuals. For our simulations, thresholds are chosen as ± 0.5 meters for the residual res_1 , related to the prismatic joint r_1 , and ± 0.5 radians for the residuals res_2 and res_3 , respectively related to the rotary joints θ_3 and θ_4 .

To show the effectiveness of the approach, some scenarios for some actuator faults are simulated using Matlab/Simulink. Figure 7 shows that the first residual res_1 is sensitive to the prismatic joint actuator fault where the other residuals are not sensitive. Figure 8 shows that the second residual res_2 is sensitive to the seat legrest rotary joint actuator fault while the others are not sensitive to this fault. Residuals res_3 , res_4 and res_5 are sensitive to the seat footrest, the seat-back and the seat headrest actuator faults respectively. Figure 9 shows that we can detect the seat-back and the tracking actuator faults simultaneously.

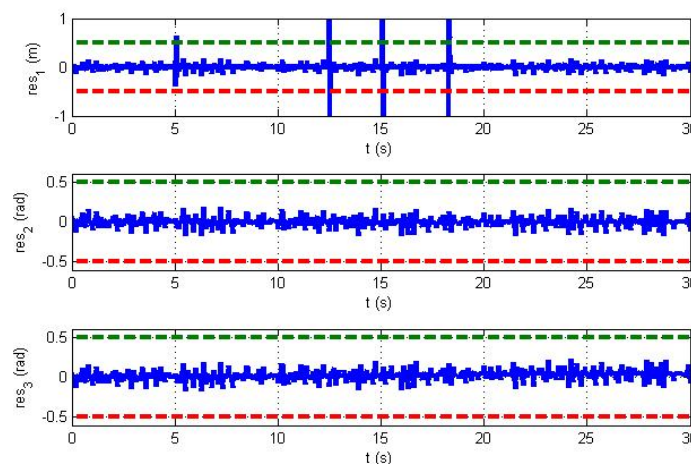


Figure 7. Detection of the tracking actuator fault.
- - - thresholds, — residuals

Figure 7 shows the sensitivity of the first residual to the actuator of the first joint. This fault consists of blocking of the actuator several times at the instants 5s, 12.5s, 15s and 18.2s respectively. Similar fault is simulated for the actuator of the rotary joint 2 and detected by the second residual as it is shown by the Figure 8. Finally, simultaneous faults are simulated for the first and the third actuator and detected by the two residuals res_1 and res_3 as is shown in figure 9.

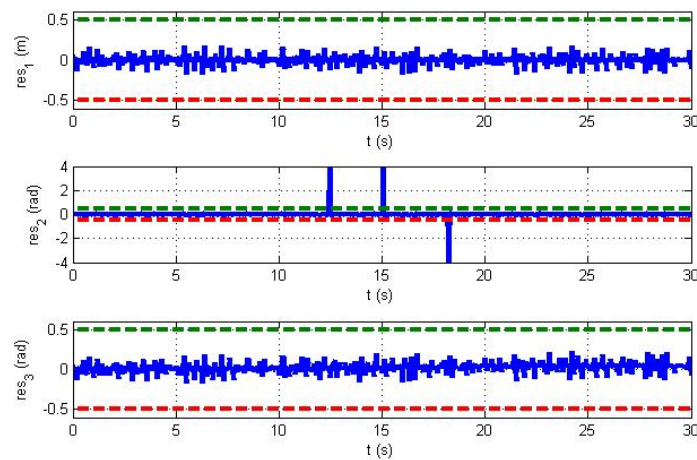


Figure 8. Detection of the legrest actuator fault.
— — thresholds, — residuals

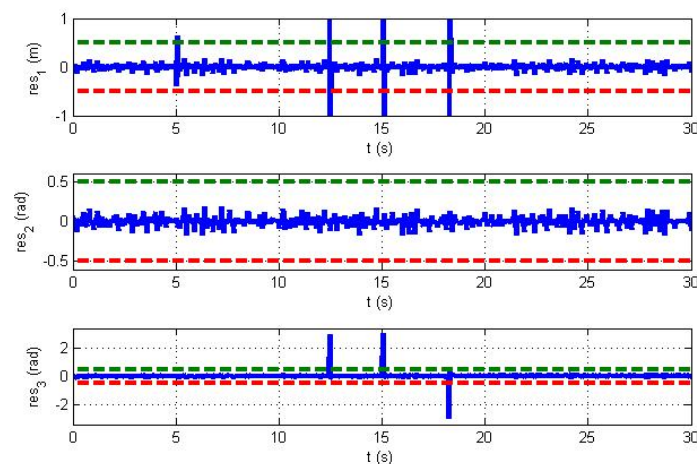


Figure 9. Detection of simultaneous faults : seat-back and tracking actuator. — — thresholds, — residuals

5. Conclusion

In this paper an analysis for fuzzy sliding mode observer based FDI applied to a Takagi-Sugeno fuzzy model of an actuated seat has been presented. A multi-observers approach is used to generate residuals that allow us to detect and to isolate actuator faults. In the actuated seat, considered as a robot with tree structure, it is important to detect the faulty actuator and then to reconfigure the control law. The effectiveness of the approach allows avoiding false alarms and non detections. Because of decentralization of actuators, we notice that each residual is sensitive to only one actuator fault. These residuals are presented as fault signature. Five observers are

used and each of them is dedicated to only one actuator. Therefore, five residuals are obtained and each of them is sensitive to only one actuator fault. Simulation results show that each residual generated by the sliding mode observers is sensitive to only one actuator fault. All real systems have uncertain characteristics, and cannot be modelled perfectly. Therefore, one has considered some bounded modelling uncertainties. In the simulation results we can observe that robustness is achieved under parametric variations of the system. Residual only depend of external inputs or fault in the system. Therefore, the sliding mode technique provides a way to find a possible solution to this problem.

References

- [1] E. Alcorta-Garcia and S. Saucedo-Flores. Fault detection and isolation based on takagi-sugeno modelling. In *IEEE International Symposium on Intelligent Control*, pages 673–678, 2003.
- [2] M. Blanke, M. Kinnaert, J. Lunze, and M. Staroswiecki. *Diagnosis and Fault-Tolerant Control*. Springer, 2006.
- [3] K. Bouibed, A. Aitouche, and M. Bayart. Sensor fault detection by sliding mode observer applied to an autonomous vehicle. In *International Conference on Advances in Computational Tools for Engineering Applications*, pages 621–626, Zouk Mosbeh, Lebanon, July 15-17 2009.
- [4] K. Bouibed, A. Aitouche, and M. Bayart. Sensor and actuator fault detection and isolation using two model based approaches: Application to an autonomous electric vehicle. In *IEEE Mediterranean Conference on Control and Automation*, pages 1290 – 1295, Marrakech, Morocco, June 23-25 2010.
- [5] K. Bouibed, L. Seddiki, K. Guelton, and H. Akdag. Actuator and sensor fault detection and isolation of an actuated seat via nonlinear multi-observers. *Systems Science & Control Engineering*, 2(1):150–160, 2014.
- [6] K. Bouibed, L. Seddiki, K. Guelton, and H. Akdag. Actuator fault detection by nonlinear sliding mode observers: application to an actuated seat. 2nd International Conference on Control and Fault Tolerant Control, 739–743 , 2013.
- [7] S.P. Boyd, L. El Ghaoui, E. Feron, and V. Balakrishnan. *Linear matrix inequalities in system and control theory*, volume 15. SIAM, 1994.
- [8] B. Castillo-Toledo, and J. Anzures-Marin. Model-based fault diagnosis using sliding mode observers to takagi-sugeno fuzzy model. In *IEEE International Symposium on, Mediterrean Conference on Control and Automation*, pages 652–657, Limassol, Cyprus, June 27-29 2005.
- [9] J. Chen and R.J. Patton. *Robust model-based fault diagnosis for dynamic systems*. Kluwer Academic Publishers, Norwell, MA, USA, 1999.
- [10] P.M. Frank, and X. Ding. Survey of robust residual generation and evaluation methods in observer-based fault detection systems. *Journal of Process Control*, 7(6):403 – 424, 1997.
- [11] P. Gerland, D. Gros, H. Schulte, and A. Kroll. Robust adaptive fault detection using global state information and application to mobile working machines. In *Conference on Control and Fault-Tolerant Systems (SysTol)*, pages 813–818, 2010.
- [12] J. Gertler. *Fault detection and diagnosis in engineering systems*. CRC, New York, 1998.
- [13] K. Guelton, S. Delprat, and T.M. Guerra. An alternative to inverse dynamics joint torques estimation in human stance based on a takagi-sugeno unknown-inputs observer in the descriptor form. *Control Engineering Practice*, 16(12):1414–1426, 2008.
- [14] D. Henry, S. Simani, and R.J. Patton. Fault detection and diagnosis for aeronautic and aerospace missions. In *Fault tolerant flight control*, pages 91–128. Springer, 2010.
- [15] R. Isermann. Model-based fault-detection and diagnosis - status and applications. *Annual Reviews in Control*, 29(1):71 – 85, 2005.
- [16] R. Isermann. *Fault-Diagnosis Applications: Model-Based Condition Monitoring: Actuators, drives, machinery, plants, sensors, and fault-tolerant systems*. Springer-Verlag Berlin Heidelberg, 2011.
- [17] B. Jiang, and F.N. Chowdhury. Parameter fault detection and estimation of a class of nonlinear systems using observers. *Journal of the Franklin Institute*, 342(7):725 – 736, 2005.
- [18] W. Khalil, and E. Dombre. *Modeling, identification and control of robots*. Butterworth-Heinemann, 2004.
- [19] R.J. Patton, P.M. Frank, and R.N. Clarke. *Fault diagnosis in dynamic systems: theory and application*. Prentice-Hall, Inderscience Publishers, 1989.
- [20] H. Schulte and K. Guelton. Descriptor modelling towards control of a two link pneumatic robot manipulator: At-s multimodel approach. *Nonlinear Analysis: Hybrid Systems*, 3(2):124–132, 2009.
- [21] L. Seddiki, K. Guelton, and J. Zaytoon. Concept and takagi-sugeno descriptor tracking controller design of a

- closed muscular chain lower-limb rehabilitation device. *IET Control Theory and Applications*, 4(8):1407–1420, 2010.
- [22] K. Tanaka, T. Ikeda, and H.O. Wang. Fuzzy regulators and fuzzy observers: relaxed stability conditions and lmi-based designs. *Fuzzy Systems, IEEE Transactions on*, 6(2):250–265, 1998.
- [23] K. Tanaka and H.O. Wang. *Fuzzy control systems design and analysis: a linear matrix inequality approach*. John Wiley & Sons, 2001.
- [24] L. Xiaodong and Z. Qingling. New approaches to H_∞ controller designs based on fuzzy observers for ts fuzzy systems via lmi. *Automatica*, 39(9):1571–1582, 2003.
- [25] M.H. Yang, S.C. Guo, Z.R. Xing, Y. Li, and J.Q. Qiu. Actuator fault detection and isolation for robot manipulators with the adaptive observer. *Advanced Materials Research*, 482:529–532, 2012.