

Data analysis of the high frequency surface wave radar during typhoon Chan-hom

Cheng Li¹, Hui Wang¹, Jia Gao^{1,4}, Huan Li¹, Guosong Wang¹, Song Pan¹,
Wenjing Fan¹, Kexiu Liu¹, Chen Zhao² and Anxiang Qi³

¹ National Marine Data and Information Service, Tianjin, 300171, China

² Wuhan University, Wuhan, 430070, China

³ East China Sea Branch of S.O.A, Shanghai, 200136, China

E-mail: licheng_ouc@163.com

Abstract. Multi-frequency high frequency radar with small circular array was deployed in Zhujiajian and Shengshan to detect the winds, waves, and currents in the overlapping area operationally in 2007. No. 1509 typhoon Chan-hom landed in the coastal areas of Jujiajian, and then moved north by east, passing the radar detection area. This paper compared the radar observed data to anchored-buoy observed data and ASCAT satellite remote sensing large area wind data respectively. The results of comparison indicated that radar basically reflected the real distribution of wind and current of Zhoushan area during typhoon Chan-hom, showing the radar is qualified to detect the winds and currents under complex marine conditions.

1. Introduction

Multi-frequency high frequency radar with small circular array [1] makes use of the specialty that vertical polarized high frequency electromagnetic wave has a lesser attenuation when spread in ocean surface to detect sea surface dynamic parameters, such as winds and currents, and low velocity moving objects at sea beyond visual range [2]. In contrast to traditional marine detection equipment, radar has the advantage of wide coverage, good real-time character, all-weather and cheap to operate. Radar works at different frequency simultaneously, which greatly increase the sea surface dynamic parameters of one echo and has better inversion results, give consideration to long ranging and high detection accuracy. In addition, variant frequency radar has a strong self-correcting capability, anti-electromagnetic interference, and more stable via data fusion [3].

No. 1509 typhoon Chan-hom, which reached super typhoon grade, was formed at 8 PM on 30 June, 2015, and then moved northwestward. It landed in Zhujiajian Town, Zhoushan City, Zhejiang Province at about 16:40 on 11 June, and moved north by east after its landing, passing by Yellow Sea and close to the Korean Peninsula, with its intensity decreasing. In this case, the typhoon center passed by radar detection area, continuous observation data under extreme marine environment was obtained by the radar. Part of the observation data is displayed in this paper, comparison and analysis of radar observation data to buoy observation data and the first Advanced Scatterometer (ASCAT) satellite remote sensing are carried out to analyze the accuracy of detected hydrologic parameters and evaluate the capability of the radar.

2. Data comparison with buoy data

The small array high frequency conversion radar is formed by two intermediate range high frequency radars, located at Sitiao (122.4275° E, 29.8931° N) and Shenshan (122.8358° E, 30.7019° N)



respectively, with a distance of about 100 km. The radiation angle of each radar is 90° , as the result of terrain limitation. The radar, with a measuring range of 200km and 0.05° (longitudinal and latitudinal), covers the area south by east to Zhoushan Islands and sweeps once per 10 minutes. A 3-meter integrated anchored-buoy, 30km from Shengshan radar station, was placed in the detection area to detect winds, currents, and waves for three month comparing observation. Figure 1 shows the locations of radar, buoy and track of typhoon Chan-hom.

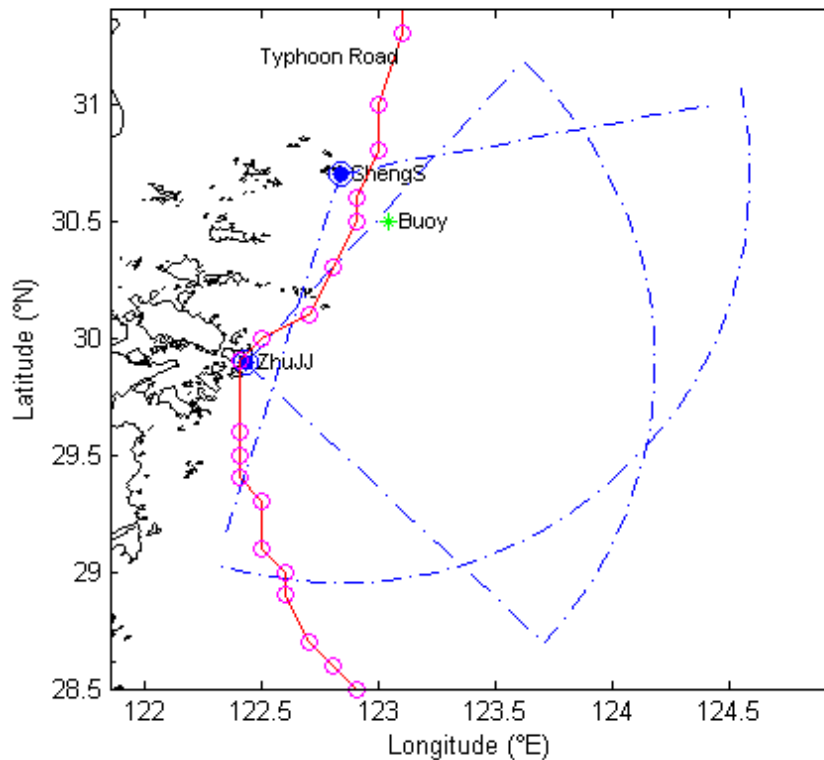


Figure 1. Locations of radar, buoy and track of typhoon Chan-hom

2.1. Current Comparison

An acoustic Doppler current profiler is installed beneath the buoy to observe current profiles, and the 3.1 meter depth current data is compared with radar observation data for a tidal period of 25 hours. Figure 2 shows the comparison results of radar radial flow to ADCP radial current from ADCP. There is a good consistency between the radar radial currents and ADCP radial currents, showing that the radar observation accuracy is qualified. The comparison result of Shengshan radar station is better than that of Zhujiajiao Station, because the buoy is nearer with Shengshan station, and the normal angle is smaller. So you can see that the closer distance from radar, the better the quality of the data, so does the normal angle [4]. The comparison results show that the radar can reflect the real marine dynamics and all of the mean absolute error, root-mean-square error, and coefficient of association are in reasonable range (Table 1). Figure 3 is the comparison result between radar synthetic vector currents and ADCP data. The results show that both the velocity and direction of the currents are of good consistency. The comparison results of flow direction show that the currents are reciprocating, conforms to the characteristic of local flow field.

2.2. Wind Comparison

Wind measuring transducer (YOUNG 05103) is installed on the top of buoy, and starts observe at whole point with a frequency of half-hour. The transducer collects data every 3 seconds as the

instantaneous wind velocity and direction for 10 minutes, and then the mean velocity and direction of the 10 minutes are calculated as the mean velocity and direction at the end of the 10 minutes [5]. The comparison time of data is from 1:30, 16 June to 23:30 11 August. The actual sample number of radar data is 8041, 98.4% for the obtain rate of data, although it should be 8170.

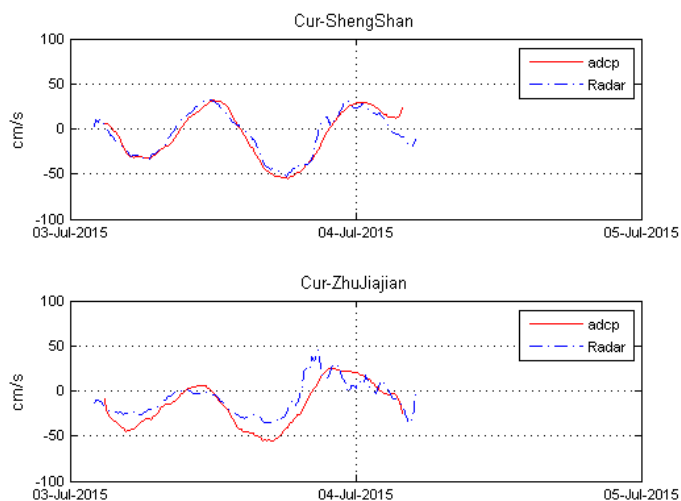


Figure 2. Radial flow comparison

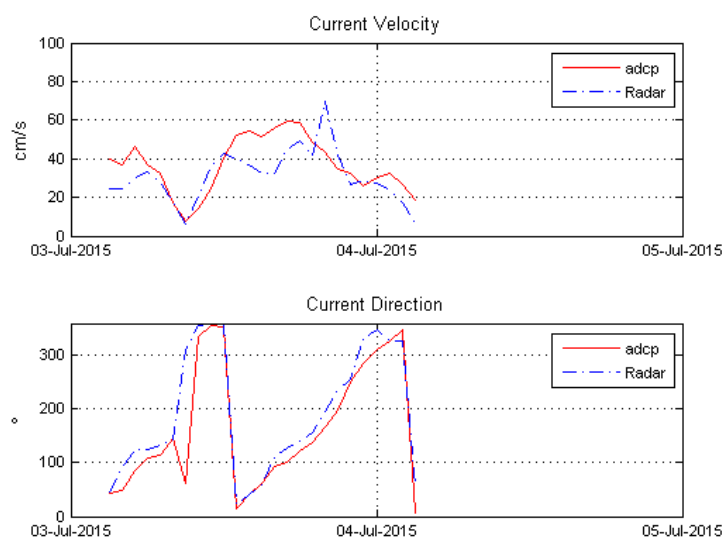


Figure 3. Vector flow comparison

Table 1. Radial flow comparison results

radial flow velocity(cm/s)	mean absolute error	Standard deviation of mean absolute error	root-mean-square error	coefficient of association
Shengshan	2.09	6.55	6.88	0.97
ZhuJiajian	8.24	12.19	13.71	0.89

Figure 4 shows the comparison results for radar observation wind data with buoy observation wind data. The results show that the radar obtained the complete records of wind velocity variation trend during the time that typhoon passing the detection area, especially the wind increase and decrease process from 7:00, 9 July to 2:30 12, July 2015. Among the detection time series, the maximum observation wind velocity is 18.5 m/s, which occurs not much during the detection time series, so the root-mean-square error of 3.26 m/s basically meets the demand of radar. The error indicates the radar has a good capability of wind detection to a certain degree.

Figure 5 shows the comparison results for wind direction. The results indicate that the radar observation wind direction has good coherence to buoy data, especially that the radar data better reflects all the changing process of sea surface direction during the landing of typhoon.

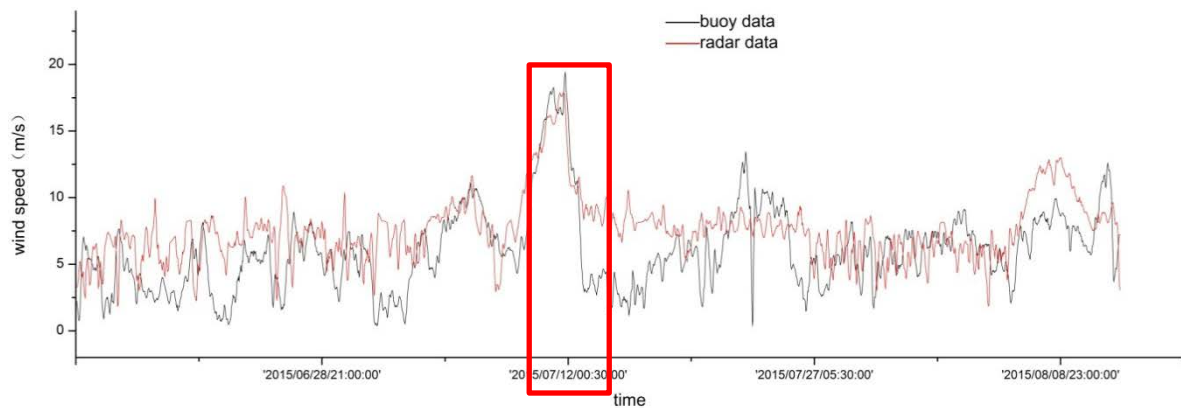


Figure 4. Wind speed comparison

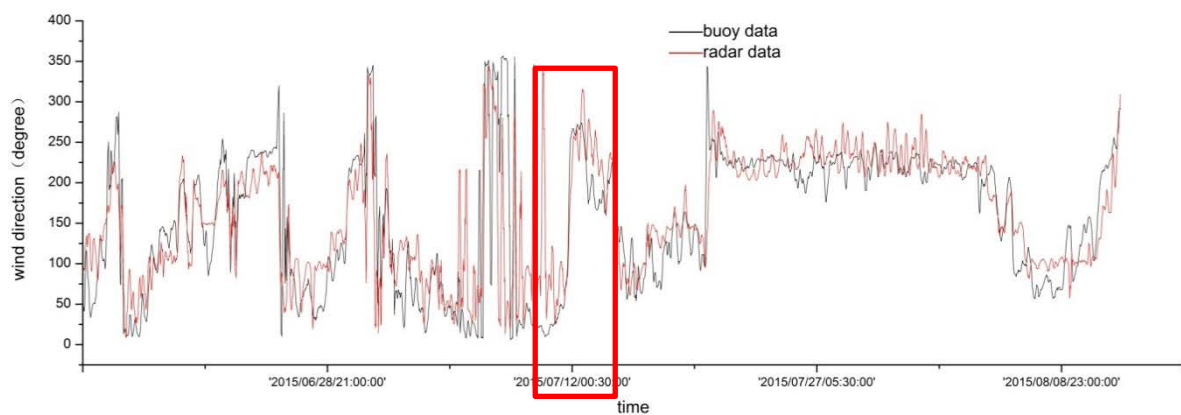


Figure 5. Wind direction comparison

The radar of 7.5~8.5M frequency band is deemed to detect wind field above 5m/s, according to radar detection theory [6]. So the wind data over 5m/s is filtered out to be compared with buoy data. The results (Figure 6) indicate the root-mean-square error is smaller than all the data, showing that the greater the wind speed is, the better radar detection capability. The wind direction is mainly northbound before the arrival of typhoon, while it turned to northwest from west when typhoon passing by, as the buoy was on the eastern way of typhoon. The wind direction observed at the buoy position turned to southeast along with the typhoon heading further north. The observed wind direction is a well matched with the wind shift characteristics of typhoon in northern hemisphere.

In Figure 6, radar observed wind direction changes lags behind the buoy observed wind direction changes, because the buoy directly obtain observed data via transducer, while radar needs to invert ocean scattering echo, which cost some time, to obtain wind direction data.

Overall, radar observed wind speed is greater than buoy observed wind speed, the mean absolute error, root-mean-square error radar are in reasonable range (Table 2). Also the radar can basically reflect the real wind change process and can meet the performance requirements.

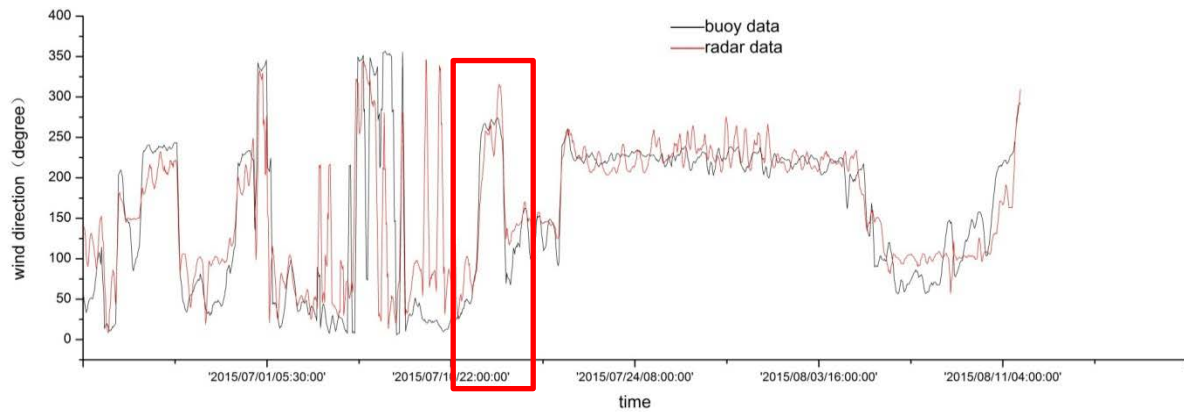


Figure 6. Wind speed comparison (when wind speed greater than 5m/s)

Table2. Wind element errors

Wind element	mean absolute error	Standard deviation of mean absolute error	root-mean-square error	coefficient of association
Wind speed(m/s)	1.60	2.84	3.26	0.53
Wind direction(°) (wind speed 0m/s)	9.36	37.60	38.75	0.66
Wind direction (°) (wind speed >5m/s)	9.43	25.99	27.00	0.66

3. ASCAT satellite wind data comparison

More wind data comparison between radar and satellite is necessary, since the fixed point observation is limited by its small coverage and low spatial resolution.

The first Advanced Scatterometer (ASCAT) was launched on the EUMETSAT MetOp-A satellite in October 2006. It became fully operational in May 2007 and continues to operate today. Scatterometers are essentially radars that transmit microwave pulses down to the Earth's surface and then measure the power that is returned back to the instrument [7]. This "backscattered" power is related to surface roughness. For water surfaces, the surface roughness is highly correlated with the near-surface wind speed and direction. Hence, wind speed and direction are retrieved from measurements of the scatterometer's backscattered power.

Figure 7 and Figure 8 show the large area wind distribution inverted by radar and ASCAT satellite wind data. As can be seen from the charts, radar inverted wind field agrees with ASCAT satellite wind data basically, mirrors the wind field distribution during the typhoon, indicates that the radar is qualified to detect the winds under complex marine conditions and extraordinary weather disasters.

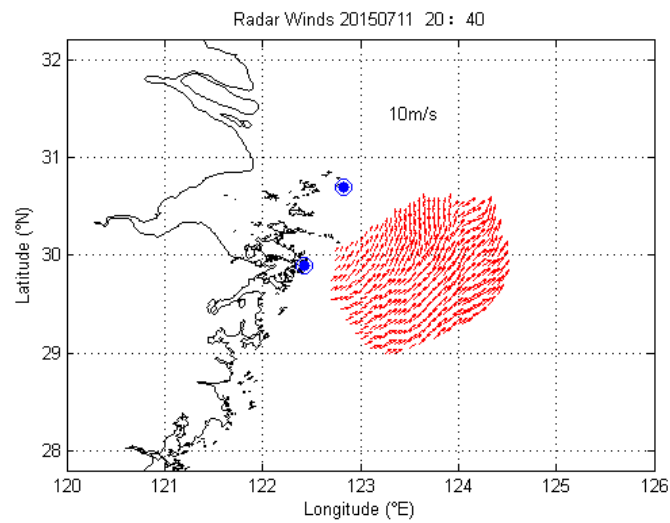


Figure 7. Wind distribution observed by radar

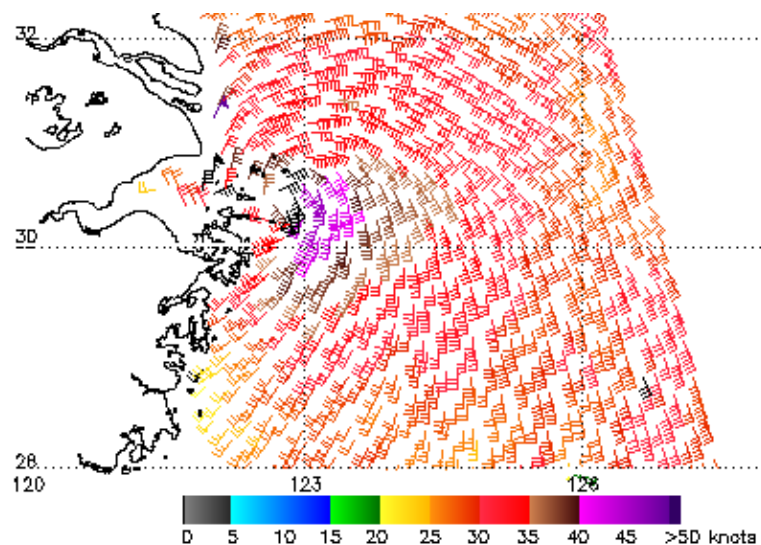


Figure 8. ASCAT wind distribution 20150711-20:40 (NOAA/NMSDIS/Center for Satellite Applications and Research)

4. Conclusions

The winds and currents data obtained by radar during typhoon Chan-hom are analyzed in this paper. In total, radar is qualified to observe winds and currents by the comparison with buoy observed data and ASCAT satellite wind data, proving that radar can detect the winds under complex marine conditions and extraordinary weather disasters.

Three methods of marine surveys are compared in this paper, radar has its advantage over fixed buoy and satellite. Buoy observation is for fixed point, and, cannot meet the demands of mesoscale to small scale marine observation, because it is limited by its small range and weak resistance to destroy. Satellite remote sensing data has the advantage of high sampling rate and wide coverage [8], but there are drawbacks, such as it cannot detect for a continuous long time in a particular area and data loss exists, as a result of the limitation of satellite orbit and period. In addition, satellite observed wind

speed is valid only if the speed is less than 24m/s, or its accuracy decreases when the typhoon is strong enough. High frequency surface wave radar is able to do large area, real-time, long-term marine dynamic parameters detection, it is the foundational tool of realizing marine real-time monitoring plane, can make up the deficiency of the conventional marine monitoring of China, improve abilities of marine environment real-time monitor in China Sea region.

References

- [1] Leigh B 1998 HF Radar-The Key to Efficient Wide Area Maritime Surveillance *EEZ Technology, Edition 3* London: ICG Publishing LTD 115-118.
- [2] Wait J R 1966 Theory of HF ground wave backscatter from sea waves *JGR* **71** 4839-4842.
- [3] Moore R K Fung A K 1979 Radar determination of winds at sea *Proc IEEE* **67** 1504-1521.
- [4] Lipa B, Barrick D 1986 Extraction of sea state from HF radar sea echo: Mathematical theory and modeling *Radio Sci* **21(1)** 81-100.
- [5] Heron M L and Rose R J 1986 On the application of HF ocean radar to the observation of temporal and spatial changes in wind direction *IEEE Journal of Oceanic Engineering* **11(2)** 210-218.
- [6] Wu X B, Li L, Li Y, et al. 2012 Experimental Research on significant wave height detecting with RADAR OSMAR071 *Oceanologia Et Limnologia Sinica* **43(2)** 210-216.
- [7] Bartalis Z, Wagner W, Naeimi V, et al. 2007 Initial soil moisture retrievals from the METOP-A advanced scatterometer (ASCAT) *Geophysical Research Letters* **34(20)** 122-122.
- [8] Figasaldaña J, Wilson J J W, Attema E, et al. 2002 The advanced scatterometer (ASCAT) on the meteorological operational (MetOp) platform: A follow on for European wind scatterometers *Canadian Journal of Remote Sensing* **28(3)** 123-127.