

# Improving Hygienic Characteristics of Coated Electrodes for Welding High-Alloy Steels

D P Il'yaschenko<sup>1,a</sup>, D A Chinakhov<sup>1,b</sup>, K V Ivanov<sup>2</sup>, I D Sadikov<sup>1</sup>

<sup>1</sup>Yurga Institute of Technology, TPU  
Leningradskaya 26, Yurga, Russian Federation, 652055

<sup>2</sup>Institute of Strength Physics and Materials Science SB RAS,  
Academicheskyy pr. 2/4, Tomsk, Russian Federation, 634055

E-mail: <sup>a</sup>mita8@rambler.ru, <sup>b</sup>chinakhov@tpu.ru

**Abstract:** The article presents the results of experimental studies showing that the use of an inverter power supply instead of a diode rectifier provides: fine-droplet electrode metal transfer which reduces generation time by 46% and transfer time by 28%; transfer of alloying elements from welding materials into the weld metal which reduces its loss from the welding line by 6% and the heat affected area by 3%; reducing the emission rate of welding fumes and their components by 23%; reducing specific emission of welding fumes and their components by 23%.

## 1. Introduction

In 2013 the American Conference of Governmental Industrial Hygienists (ACGIH) revised its recommendations on the quantitative composition of welding fumes and proposed to reduce the maximum permissible concentration (MPC). It is obvious that the above changes will become a regulatory standard that will make manufacturers of welding consumables to seek ways of adapting to the new conditions. In many countries and especially in the US, judicial proceedings between welders who suffer from occupational diseases and producers of welding materials take place. Thus, measures aimed at reducing the negative impact of welding fumes on human health are necessary. The above facts show that work at improvement of sanitary and hygienic characteristics of welding is going on at the international level [1].

An analysis of research works [2-4] showed that the quantitative and qualitative composition of welding fumes has a negative impact on human body, especially when welding high-alloy steels.

Arc welding of high-alloy chromium-nickel steels causes air pollution in the working area with welding fumes which contain harmful substances of various hazard categories (State Standard 12.1.005-88): I - hexavalent chromium, and nickel; II - manganese and soluble fluoride; III - trivalent chromium and insoluble fluorides.

Minimizing welding fumes and the most toxic components in their composition is an urgent problem that must be solved.

This paper deals with a hygienic assessment of coated electrodes of CL 11 type intended for welding high-alloy steels and finding ways to reduce the toxicity of welding fumes.

One of the ways to solve this problem is to use power supplies implementing various forms of energy conversion [5-7], which have an impact on the physical and chemical processes in welding.



Work [8] describes MMA model and proves that the amount of welding fumes in the air of the working area is reduced if the amount of alloying elements transiting into the weld and the slag crust is increased. Efficiency of transition of alloying elements from the electrode to the weld can be improved by reducing heat input into an electrode metal drop and minimizing size of droplets in droplet transfer.

## 2 Methods and techniques of experimental research:

Assessment of the stability of the welding process was performed using the statistical analysis of welding current and voltage oscillograms generated by power supplies having different dynamic characteristics. The main power supplies have been chosen: a power supply made as a common welding rectifier, and the power inverter. The study of dynamic characteristics was based on a comparison of current and voltage oscillograms obtained using the following devices: digital storage oscilloscope "AKIP-4122 / 1V"; Differential Probe "Pintek Electronics DP-50"; "current probe PR 1030" puller; OWON\_Oscilloscope\_2.0.8.26 software. The results of the study are presented in Tables 1, 2 and in Figure 1.

Table 1 - Welding modes with CL11 electrodes from various energy supplies

Power supply	Electrode type	Average values of a welding mode parameters	Number of short circuits
Diode rectifier	CL11	Current 86 A Voltage 24.5B Welding speed 0.27 m/min	12
Inverter			24

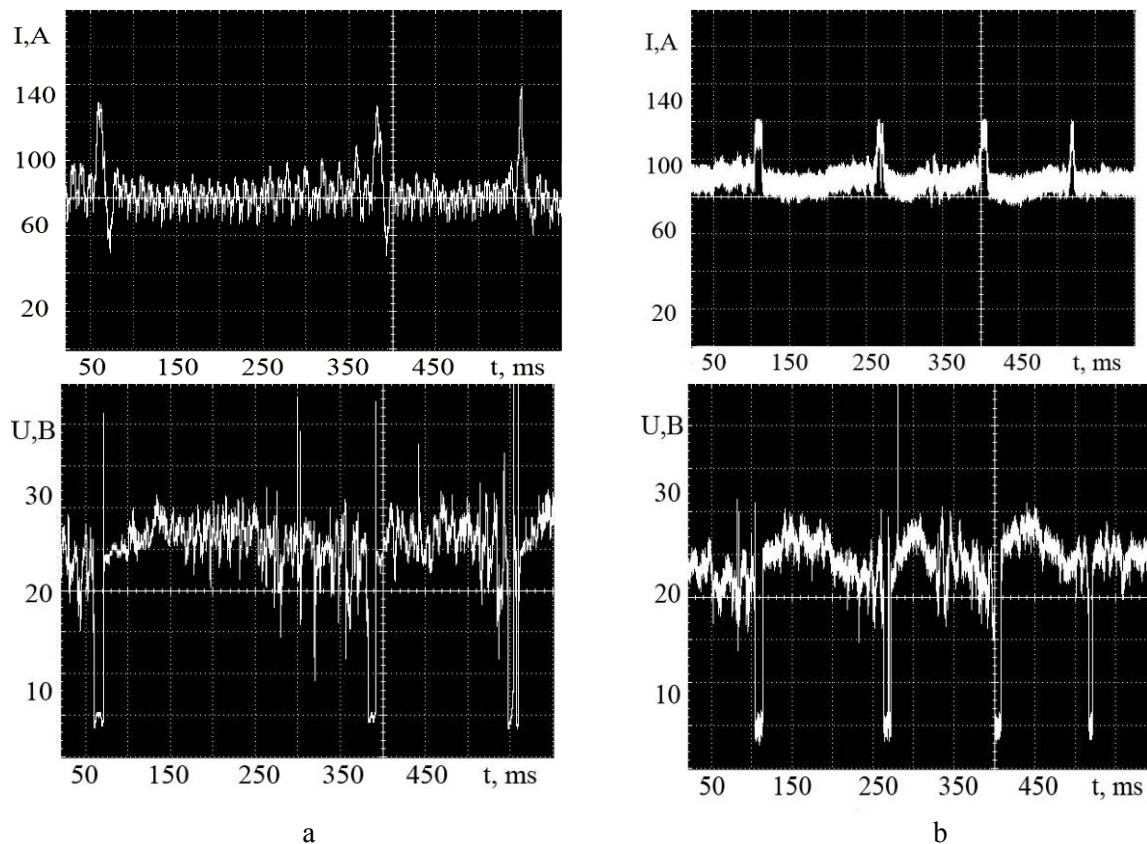


Figure 1. Oscillograms of voltage and current of drop transfer cycle (Type CL 11 electrodes with a diameter of 3 mm): a) - diode rectifier; b) - inverter

### 3. Results

Analysis of the oscillograms shown in Figure 1 (Table 1.2) shows that when a power supply based on high frequency energy conversion (an inverter) is used, the droplet transition time decreases and the quantity of short circuits increases. In this case the droplets in electrode metal transfer are smaller in size which is proved to changes the chemical composition of the weld metal [9, 10]. To confirm this supposition microradiography of chemical composition at areas 1, 2, 3 shown in Fig. 3 and Table 3 was carried out (Fig. 2).

When MMA deoxidation - alloying of the weld metal occurs combined - through electrode coating.

Table 2 - Static analysis of dropt transfer parameters of CL11 coated electrodes metal

Parameters	Power supply	
	Diod rectifier	Inverter
The duration of short-circuit arc gap, m/s	12	8.7
The standard deviation of short-circuit time, m/s	3.76	3.52
The coefficient of time variation, %	31.3	28.9
Time of short-circuit cycle,, m/s	249	140
The standard deviation of short-circuit cycle time $\sigma$ , m/s	76.3	45.8
Variation coefficient of short-circuit time, %	30.6	32.7

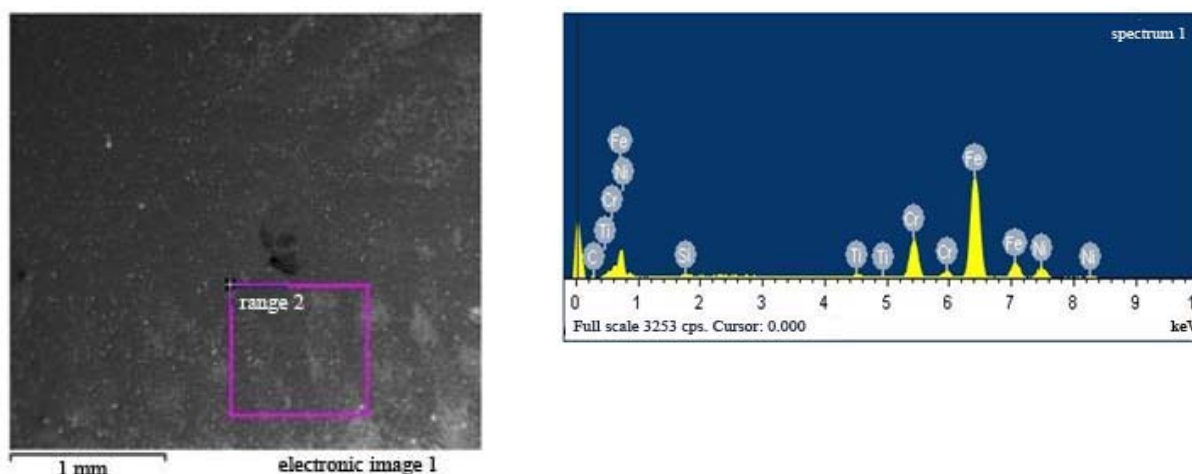


Figure 2. Electron microprobe analysis obtained by INCA consoles (Oxford Instruments)

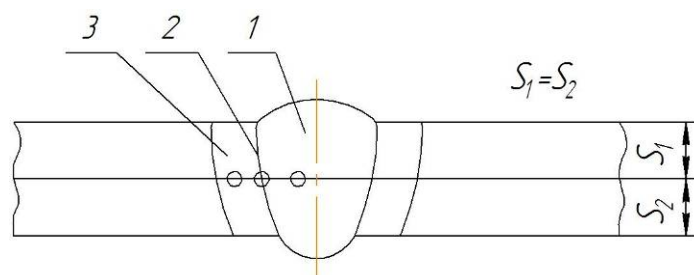


Figure 3. The scheme of electron microradiography: 1 – Weld; 2 – Weld line; 3 – HAZ

Table 3 - Chemical composition of weld metal made of steel H18N10T obtained electrodes brand CL 11

Elements content	Power Supply			
	Diode Rectifier		Invertor	
	Weight %	Atom%	Weight %	Atom%
Weld (1)				
Si K	0.36	0.71	0.38	0.75
Ti K	1.44	1.45	1.90	1.91
Cr K	18.54	19.66	19.21	20.37
Fe K	67.71	66.85	69.45	68.57
Ni K	10.19	9.57	10.81	10.15
Weld line (2)				
Si K	0.50	0.98	0.56	1.10
Ti K	0.60	0.69	0.65	0.75
Cr K	16.45	17.45	17.40	18.42
Fe K	70.52	69.53	71.44	70.77
Ni K	10.87	10.11	11.01	10.20
HAZ (3)				
Si K	0.50	0.97	0.53	1.05
Ti K	0.61	0.70	0.76	0.88
Cr K	17.19	18.21	17.41	18.45
Fe K	70.96	70.00	70.70	69.73
Ni K	10.63	9.98	10.71	10.05

An analysis of data in Table 3 shows an increase of the alloying elements in all the weld areas investigated when an inverter is used, which can be explained by fine-droplet electrode metal transfer (Table 2).

Samples of welding fumes for hygienic assessment of the electrodes were collected in the course of welding beads on plates of H18N10T steel with the electrode being tested. A diode rectifier and an inverter were used as the power supply. Bead welding was carried out with direct reverse polarity current at optimal conditions. Welding fumes were captured by means of a special cover insulating the weld zone.

At the same time, according to instructions [11, 12], welding fumes deposited on the filters of FPP-15-1.5 tissue when assessing the level of emission and on AFA-HA-18 filters when for subsequent chemical analysis of welding fumes samples. The weight of the emitted welding fumes and their components was determined by the gravimetric method. For this purpose, at least five welding fume samples were selected. The research results (Table 4, 5, 6) were subjected to statistical analysis [13].

Table 4 - The emission rate of welding fumes and their components (g/min)

Electrode type (diameter, mm)	Power supply type	CA	CrO <sub>3</sub>	Cr <sub>2</sub> O <sub>3</sub>	Mn	Ni	F soluble	F insoluble
CL-11 (3)	Diode rectifier	0.257	0.012	0.006	0.007	0.006	0.012	0.013
	Inverter	0.2	0.09	0.004	0.005	0.0045	0.01	0.01

Table 5 - Specific emission (g/kg) of welding fumes and their components

Electrode type (diameter, mm)	Power supply type	CA	CrO <sub>3</sub>	Cr <sub>2</sub> O <sub>3</sub>	Mn	Ni	F soluble	F insoluble
CL-11	Diode rectifier	10.48	0.48	0.26	0.31	0.26	0.50	0.51
	Inverter	8.07	0.37	0.20	0.24	0.20	0.42	0.42

Table 6 - Toxic level of TLVf welding fumes and NHL air exchange

Electrode type (diameter, mm)	Power supply type	TLV <sub>f</sub> , mg/g <sup>3</sup>	NHL, m <sup>3</sup> /h
CL-11	Diode rectifier	0.15	1480
	Inverter	0.1	1000

According to the research results (Table 4, 5, 6) it has been found that the use of inverter rectifiers improves working conditions of welders in manual arc welding as compared with diode rectifiers. It reduces: a quantitative component of welding fumes from 0.257 to 0.2 (19%), manganese from 0.007 to 0.005 (23%), chromium oxide from 0.012 to 0.09 (24%).

## Conclusion

The research has shown that the use of an inverter power supply instead of a diode rectifier provides:

- 1) fine-droplet electrode metal transfer which reduces generation time by 46% and transfer time by 28%;
- 2) transfer of alloying elements from welding materials into the weld metal which reduces its loss from the welding line by 6% and the heat affected area by 3%;
- 3) reducing the emission rate of welding fumes and their components by 23%;
- 4) reducing specific emission of welding fumes and their components by 23%.

Work carried out at the expense of the Russian Science Foundation grant, the project №16-19-10010.

## References

- [1] I.P.Gubunya, I.R. Yavdoschin Formation of solid components of welding fumes and the ways of their penetration into the human body/ Automatic Welding. No 1. 2016. 53-54.
- [2] Cardiovascular effects in rats after intratracheal instillation of metal welding particle. Автор: Zheng, Wen; Antonini, James M.; Lin, Yen-Chang;. INHALATION TOXICOLOGY Volume: 27 Issue: P.: 45-53 Published: JAN 2015

- [3] Home cage locomotor changes in non-human primates after prolonged welding-fume exposure  
Автор: Kim, Choong Yong; Sung, Jae Hyuck; Chung, Yong Hyun; INHALATION TOXICOLOGY Volume: 25 Issue: 14 P.: 794-801 Published: DEC 2013
- [4] Chemical composition of welding aerosol in manual coated electrode arc welding. Il'yashchenko, D.P., Zernin, E.A., Shadskii, S.V. 2011 Welding International
- [5] Improved Power-Quality-Based Welding Power Supply With Overcurrent Handling Capability. Narula, Swati; Singh, Bhim; Bhuvaneswari, G. IEEE TRANSACTIONS ON POWER ELECTRONICS Volume: Issue: 4 P.: 2850-2859 Published: APR 2016
- [6] Power Quality Improvement Using Three Phase Modular Converter for Welding PowerSupply. Singh, Bhim; Narula, Swati; Bhuvaneswari, G. Group authors: IEEE. Conference: IEEE 5th Power India Conference Location: Murthal, INDIA публ.: DEC 19-22, 2012. Sponsors: IEEE. 2012 IEEE FIFTH POWER INDIA CONFERENCE Published: 2012
- [7] Load-Resonant Converter with Changing Resonant Tanl Topology for WeldingApplications. Shklovski, Jevgeni; Janson, Kuno; Kallaste, Ants Group authors: IEEE Industrial Electronics Society. Конференция: 38th Annual Conference on IEEE-Industrial-Electronics-Society (IECON )Location: Univ Quebec, Ecole Technologie Superieure Montreal (ETS), Montreal, CANADAпубл.: OCT 25-28, 2012. 38TH ANNUAL CONFERENCE ON IEEE INDUSTRIAL ELECTRONICS SOCIETY (IECON 2012) Series: IEEE Industrial Electronics Society Pp. 518-524 Published: 2012
- [8] MAW productivity development and reduction of its harmful effect on human organisms Ilyashchenko, D.P., Chinakhov, D.A., Gotovshchik, Y.M. Applied Mechanics and Materials 2014.
- [9] Il'yashchenko D. P. , Chinakhov D. A. Investigating the Influence of the Power Supply Type upon the Weld Joints Properties and Health Characteristics of the Manual Arc welding. Materials Science Forum. 2012. Vol. 704. Pp. 608-611.
- [10] Arc welding metallurgy: processes in the arc and electrode melting / Edited by I.K. Pokhodnya. 1990.
- [11] Methodology guidelines 1927–78. Hygienic assessment of welding materials and methods of welding, weld overlay and metal cutting. Ministry of Health of the USSR, 1980.
- [12] Methodology guidelines 4945–88. Determining hazardous substances in welding fumes. Ministry of Health of the USSR, 1990.
- [13] Pollard, J. Reference book on statistical calculations. Russian translation. Moscow, 1982.