

PAPER • OPEN ACCESS

Construction of Corridor of Architectural Heritage Along the Line of ZiJiang River in Hunan Province in the Background of the Tea Road Ceremony

To cite this article: Chen Hui *et al* 2019 *IOP Conf. Ser.: Mater. Sci. Eng.* **471** 082024

View the [article online](#) for updates and enhancements.



IOP | ebooks™

Bringing you innovative digital publishing with leading voices to create your essential collection of books in STEM research.

Start exploring the collection - download the first chapter of every title for free.

Construction of Corridor of Architectural Heritage Along the Line of ZiJiang River in Hunan Province in the Background of the Tea Road Ceremony

Chen Hui, Cao Dong¹, Zou Yuan¹, Meng Sicheng¹

¹ Hunan University, 2 Lushan S Rd, Yuelu Qu, Changsha Shi, Hunan Sheng, China, 410006

chenhui2012@hnu.edu.cn

Abstracts : Heritage corridor originated from the United States, which is a new method for regional protection of linear cultural heritage, the accurate construction of heritage corridor is of great significance to the integrity and authenticity protection of the architectural heritage of the Tea Road. The article intends to build a reasonable corridor of Anhua Section Heritage Building by in-depth analysis of the distribution, heritage relevance and spatial structure of Anhua Tea Ceremony in Hunan Anhua Section, to provide a kind of thinking for the protection of the whole building heritage of The Tea Road, advance the work of application for a world heritage site.

1. Introduction

The Tea road is an important international trade route that has arisen in Eurasia following the decline of the Silk Road. It crossed Mongolia from the southern China tea-producing area to Chkatu which is the treaty port of between China-Russia border, extending to Moscow, finally spreading to Central Asia and other European countries through St. Petersburg. It has become the main passage between the East and the West in the 18th to 19th centuries. The trade way achieves double-way communication with substance and culture exchange, Chinese tea culture and farming civilization spread all over Europe and Western industrial civilization permeated into mainland China, which became another important linear cultural heritage after the ancient Silk Road.

As an important province surrounding Dongting Lake tea production zone of the Tea road, Hunan ranks second in china for tea production, which is known as "tea village". Historically, the development of tea trade in Hunan can be divided into four stages: In the first stage, there was tea area and the custom of tea-drink in Hunan during the bud of China's tea trade. The second stage, because of drinking habits prevails among the kings and the common people in the Tang Dynasty, the demand of tea increased. The amount of natural wild tea is in short supply, so artificial cultivation of tea appears, in Shimen, Hengyang, Hengshan, Chaling, Yiyang, Anhua and other counties earliest appeared. The third stage, during Yuan, Ming Dynasty tea trade has further enriched and developed, planted law enters intensive stage especially in Hunan. Since its spring up in the mid-Qing Dynasty, Hunan has become one of key suppliers. The fourth stage, Tea and tea trade have new development after the creation of the state of China.

In the analysis of the spatial structure of The Tea road's heritage, the concept of heritage corridor was introduced, the resource of isolated tea culture relics was integrated and the whole heritage space open system based on the historical background of The Tea road was established. For the protection of



architectural heritage, the regional culture harmonious development of Hunan in The Tea road has great significance. Based on the analysis of heritage and the construction of heritage corridor, this article combs and integrates the important tea culture nodes in Hunan section of The Tea road from a macroscopic perspective, which provides a reliable basis for establishing the protection strategy of architectural heritage of Hunan section of The Tea road.

2. Hunan Anhua section of architectural heritage distribution

The architectural heritage of Hunan section in The Tea road includes eight categories, such as ancient tea-shops, ancient tea factories, tea pavilions, tea gardens, tea plantation, wharfs, wind-rain bridge, ancient post roads and ancient streets. Hunan has more than 90 Architectural heritages in total, most of them forthcoming or have been declared as national, provincial, municipal or county protection, table 1, 2.

Table 1. Hunan section of The Tea road's architectural heritage distribution ratio graph

Divide by region	Quantity	Proportion %
Changsha	2	2%
Yueyang	25	28%
Yiyang	39	43%
Zhuzhou	3	3%
Loudi	22	24%
Total	91	100%

Table 2. Hunan section of The Tea road's architectural heritage protection level graph

Divide by protection level	Quantity	Proportion %
National protection	8	9%
Provincial protection	10	11%
Municipal protection	5	5%
County protection	11	12%
Have not divide	56	63%
Total	91	100%

Generally speaking, the architectural heritage in this section feature is not well-distributed and diversified species. Therefore, it is necessary to classify the various heritage sites and formulate corresponding value evaluation systems, especially for heritage sites that are not included in the statutory protection system. According to Evaluation Criteria such as current preservation situation, complete pattern of the situation, stable structure situation, Material alter and Post-interference of the existing heritage sites preservation situation, the status quo of the preservation of the heritage sites is classified Four levels of assessment division: "Level I, Level II, Level III, Level IV". Specific reference indicators at all levels and the relevant circumstances follow the following principles:

1. Level 1 heritage site: protection measures have been implemented within 5 years; the site preservation status is good, the pattern is intact, the structure is stable, the materials are not changed much, and there are few post-disturbances.
2. Level 2 heritage site: protection measures without repairing within 5 years; the site preservation status is relatively good, the pattern is relatively intact, the structure is stable, the materials are few changed, and there are some post-disturbances.
3. Level 3 heritage site: Basically not repaired, to maintain be main body of preservation in general, the pattern is relatively intact, the structure is relatively stable, the materials have big changed, and there are much post-disturbances.
4. Level 4 heritage site: The main body of the remains is basically destroyed, and there are much post-disturbances.



Figure 1. Hunan section of The Tea road's heritage point distribution graph

Most of the architectural heritages in Hunan Province, which have been listed in the Catalog of Inscriptions for the Presence of the road tea for the most part, have been completed preservation. A small part has been greatly damaged due to years of changes and economic development. In addition, a small part of Tea factories and tea gardens are still in use and bear the functions of tea production, transportation or trade and so on.

The Tea road not only is a cultural line but also a landscape belt. There is not an isolated individual heritage, but a complete system of tangible and intangible cultural heritage. Its materiality refers to the specific existence of heritage sites, such as Tea garden, Tea factory, Wind-rain bridge group, Wharf, Ancient post road and so on. Immateriality not only refers to the tea-related production process heritages, festivals, ceremonies, art and practical activities, but also includes the heritage space and heritage lines consisting of the heritage sites. In the history of The Tea road, the passage has always been accompanied by changes in the rivers and villages. Influenced by different regions, cultures and histories, the Tea road heritage forms different types and landforms. These abundant culture heritages compose an important material evidence of the historical business practices in Hunan section of the Tea road.

Table 3. Hunan section of The Tea road's heritage point distribution ratio graph

By region	Quantity	Proportion %
Tea-shop	2	2%
Tea factory	3	3%
Tea pavilion	15	16%
Tea garden	5	6%
Tea plantation	1	1%
Wharf	12	13%
Wind-rain bridge	10	11%
Tea trader manor	1	1%
Tea farmer village	8	9%
Ancient post road	18	20%
Ancient street	4	5%
Others	12	13%
Total	91	100%

3. Heritage relevance analysis

The whole line of The Tea Road can be divided into six parts according to its main functions: production, manufacture, transportation, storage, trade and consumption. As an important node of The Tea Road, the Anhua section of Hunan province covers production, manufacture, transportation, trade. The architectural heritage related to "produce" mainly includes ancient tea gardens, ancient tea trees and ancient villages; to "manufacture" mainly includes tea houses, tea factories; to "transport" mainly includes two kinds of transportation modes, such as waterway and land transportation, and its heritage types are mainly wharf, wind and rain bridge, ancient post road and so on. To "trade" mainly includes ancient tea houses, ancient tea markets, ancient town streets. In the construction of the heritage corridor of Anhua Section, it is necessary to take fully into account the related degree of the architectural heritage of different links in the aspects of geographical space, historical background and cultural property, and establish the combination of the value characteristics and relevant heritage elements of this section, and submit the value of the whole architectural heritage space of The Tea Road.

The analysis of the relevance of heritage points should be based on a specific historical period and geographical and cultural background. Based on the tea cultivation, tea making, tea trade, tea transportation and other related behaviors and historical events of The Tea Road, the author consider the intrinsic relationship of the individuals of heritage sites at different levels in space, and judge their value and contribution to the integrity of cultural routes. The "small combination" of heritage is formed through the association of heritage elements to strengthen its value representativeness, to make up for the weak degree of connotation and scale of a single heritage, and to strengthen the presentation of value characteristics and overall relationship. For example, "small combination" can be formed via function types, including "producing area" which is "village+tea garden+ancient road", "facility" which is "ancient road+tea pavilion+bridge", and "product" which is "market+wharf+tea house", etc. These heritages are related to The Tea Road, including functional, historical and spatial, as shown in Table 4.

Table 4. Elements of Cultural Heritage along Zishui River of the Tea Road

Attribute	Types	Correlation with Anhua section of The Tea Road
Material and cultural heritage	Ancient roads, bridges, wharves, ferries	Transport and trade functions directly related to The Tea Road, spatial correlation
	Tea Merchants Guild, temples, monuments	Architectures and sculptures that have a functional and historical relevance to The Tea Road
	storehouses	Architectures that have a storage function associated with The Tea Road
	stages, stations	Have transportation, trade function and spatial correlation with The Tea Road
	administrative, hostels, residences	Modern buildings, structures and related infrastructure related to The Tea Road
	markets, castles	Related to history and function of The Tea Road
Intangible cultural heritage	Dance, drama, literature, sports competition, art, folk custom, etc.	The spread of religious culture as a result of ethnic migration in The Tea Road, forming a rich intangible cultural heritage.

4. Spatial structure analysis

The heritage sites in Hunan Province section of The Tea Road are mainly distributed in Changsha, Yueyang, Yiyang, Changde and other places. Among them, Anhua of Yiyang is an important place of origin and supply place of black tea in The Tea Road. The transportation channel of Mao tea and

finished products is to enter The Dongting Lake northward along Zishui River. Then gathered in Hankou, and the main mode of transport is water. At present, a large number of historical heritage evidences related to the cultivation, production, trade and transportation of black tea have been retained along the river basin along Zishui River, especially the architectural heritages.

4.1 The confirm of “point”

Heritage sites are an important part of the spatial configuration of heritage corridors. We can analyze the spatial characteristics and components of different types of heritage sites (ancient tea gardens, ancient streets, ancient tea kiosk, wind and rain bridges, ancient post roads, etc.) based on tea production. The method of making and transporting tea road is used to distinguish the spatial relationship between density and grade, and the classification of the specific class of heritage is shown in Figure 6. For example, in the transportation route of tea, as the main composing point of the heritage corridor, the historic street occupies the dominant position in the route, and can be regarded as the first constituent element of the heritage corridor; Wind and rain bridges and ancient post roads are divided into the second constituent elements of heritage corridors, which relate the space between the points of the first elements to provide the basis for the construction of the heritage corridor network.

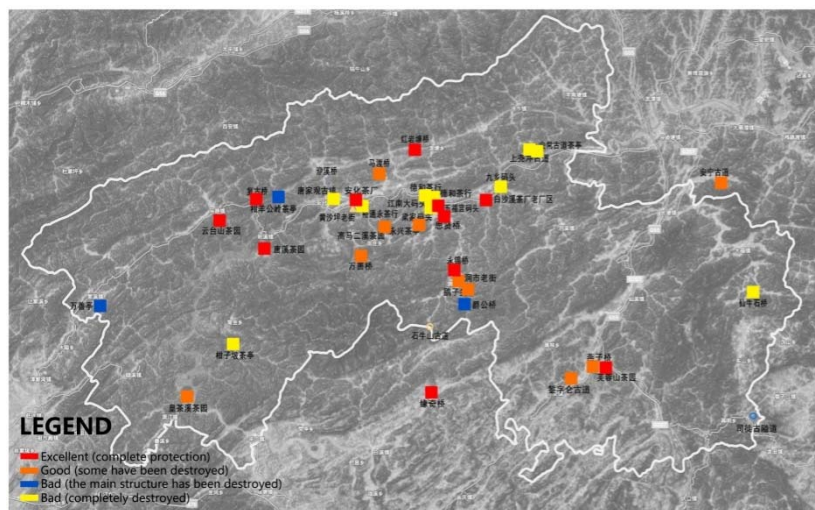


Figure 2. Map of heritage sites and types of protection along Zishui River, Anhua

For the heritage points with the same value characteristics, it is necessary to judge or combine by comparing the value representation, the composition and preservation of the elements, as well as the difficulty of improving the conditions of protection and management, the conditions of social development, and so on.

4.2 The distribute and landform of “point”

Through the screening of different types of heritage sites and the spatial statistical analysis, it can be seen that the heritage sites along Zishui River are mainly concentrated in Anhua County, with a large number and high density, most of which are tea mills or tea shops, and the overall distribution is linear along the river system. As shown in Figure 7, the density of heritage sites in shallow mountain areas is obviously lower than that in low-altitude areas, and the number is also relatively small. The main forms of heritage are wind and rain bridges, ancient tea houses, etc. In high-altitude mountain areas, the main forms of land transportation are mainly by land transportation, and the main forms of heritage are tea kiosks and ancient post roads, etc.

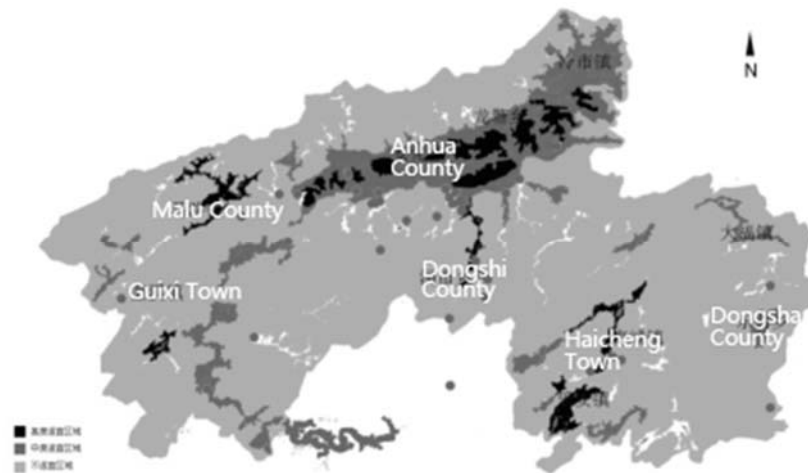


Figure 3. Results of spatial adaptability analysis of heritage along Zishui River, Anhua

As a whole, the spatial distribution of heritage along Zishui River in Hunan Province is linear along the river system due to the limitation of the main transportation modes, and its trend is from southwest to northeast, which has special spatial characteristics and distribution laws. Therefore, the water system becomes the spatial skeleton and natural base of heritage corridor along Zishui River, Hunan Province.

Because the river system is not only the region with dense heritage points, but also the more developed area of urbanization, it is necessary to pay more attention to and coordinate the relationship between the two during the construction of this heritage corridor network. Furthermore, The Tea Road itself has its own unique intangible cultural spatial distribution characteristics, so we should pay attention to and protect these different regional and historical spatial layout while constructing the heritage corridor.

4.3 The constitute of "line"

The heritage corridor is actually proposed on the assumption that there are certain nodes and a network of routes in the process of ethnic migration and cultural exchange, and that these nodes are linked together to form a linear corridor. The Legacy Corridor is a true reflection of the cultural process of history and the spread of tea culture. By maintaining its spatial structure, development process and the integrity of heritage elements, it is helpful to protect these natural and cultural resources system as the integral value of linear cultural heritage. From the view of corridor space, the construction of The Tea Road is mainly based on the linear correlation degree of each heritage. Its main elements include: the related heritage, ecological corridor and recreation system.

The establishment of the "line" is generally considered in two respects:

- **Connection.** Based on the linear correlation of The Tea Road business behavior, the elements are connected together to satisfy the flow, support and operation of the system, so that the recreational function of the system can be realized. For example, in the south section of Anhua ancient tea road, the main clues are production, transportation and consumption, and the transportation route of the tea road and related auxiliary facilities are taken as the basis. Its main route is: Furong Mountain Tea Garden-Harrier Tien Road-Yuan Qiqiao-Dongshi Old Street-Sixian Bridge-Jiangnan Town.
- **Integration.** Each element of the heritage is formed into a corridor in the form of a group, and the spatial relationship of the heritage is simplified as a network corridor relationship. For example, the heritage integration of southern section of Anhua ancient tea road, as a heritage group node, taking Zishui River as the main spatial skeleton, forming a cross-regional network corridor relationship.



Figure 4. Pattern of main Heritage Corridor along Zishui Road of Wanli Tea ceremony

5. Heritage corridor level analysis

Based on the characteristics of the distribution and spatial distribution of the heritage corridor, taking the corridor integrity, the correlation and connectivity of the heritage sites as the principle, careful identification, comparison and judgment make it possible to draw a conclusion that The Tea Road heritage gallery planning. In order to excavate the core values of heritage corridors and implement more precise protection measures for each heritage site, we analyzed the maximum likelihood of the tea ceremony transport routes, the protection level of the heritage sites (state-owned insurance, provincial insurance, municipal insurance, county insurance) and the spatial relationship with the surrounding heritage sites, the heritage gallery network is divided into two levels, namely the main heritage corridor and the secondary heritage corridor.

5.1 Main heritage corridor

The Tea Road along the capital and the water line, the historical route and other linear cultural heritage as the spatial framework, connecting the major heritage sites or heritage areas, including ancient streets, ancient tea gardens, ancient villages, etc., forming a complete heritage corridor. According to the existing literature and research results, the main routes as follow: The western plains area mainly consists of areas along the immediate vicinity of the capital and water resources, such as Anhua County and Lengshi Township; In the south, near the mountainous areas, the heritage corridor is mainly composed of the heritage sites of Dongshi Township and Meicheng Township. As well as the eastern part of Dongshan Township, Dafu Township and other places formed by the high mountain heritage corridor. These three main lines constitute the main heritage corridor of The Tea Road along Zishui River.

The main heritage corridor along Zishui River aims to protect the natural water system and linear cultural heritage, create eco-cultural tourism and tea culture historical experience space, In respect of the authenticity and integrity of the cultural heritage of the tea culture, the original natural and historical cultural pattern will be preserved and restored.

5.2 Secondary heritage corridor

The main heritage corridor as the core, based on the business route of the tea ceremony as the basis, through terrain analysis and on-site research and other methods, the tea ceremony can be minor heritage sites and peripheral heritage sites linked to form a secondary heritage corridor. Its composition elements are ancient tea pavilion, ancient post road, wind and rain bridge, ancient pier, etc., as well as other native landscapes and ancient dwellings villages connected by these elements secondary heritage corridor has the characteristics of short residence time, weak correlation and less surviving resources. It serves the

construction of the main heritage corridor, connecting the various heritage sites with the shortest route and the maximum limit, maintaining the continuity of the entire heritage corridor, and forms a complete legacy corridor space network system.

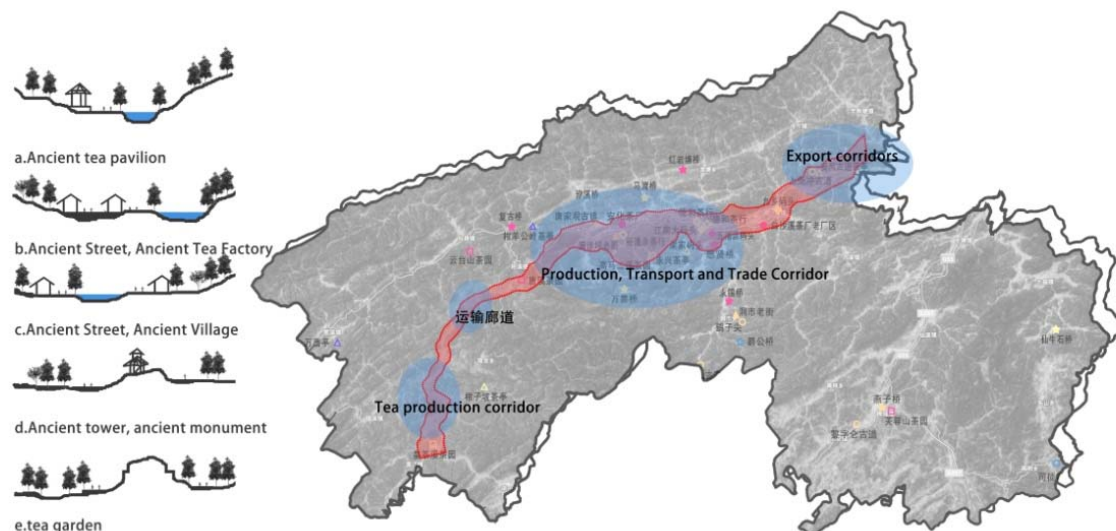


Figure 5. Anhua County Heritage Corridor Network Concept Planning

The network of heritage corridors of The Tea Road along Zuishui Water reflects to some extent the political, economic and cultural activities brought by the Hunan Dark tea culture in a particular historical period. Contact with many historical, cultural and other forms of heritage resources (such as tea plantations, tea houses, ancient streets, etc.) and intangible cultural heritage resources (such as tea trading routes, building space forms, etc.). The Heritage Corridor links the isolated heritage sites of the Tea Road Ceremony to establish a heritage space network. From the aspects of history and spatial correlation, it analyzes the structural relations among the various heritage sites, restores the true value of the heritage and enhances the overall social acceptance of the heritage site.

6. Conclusion

In the process of building the heritage corridor, the most critical is the identification of "points" and the construction of small heritage combinations. The distinction between points not only lies in its own type of function, but more importantly lies in its position and importance throughout the cultural line. Therefore, the content of the heritage has been enriched. Legacy groups break through the value assessment of a single heritage point, heritage points made up of multiple heritage point features are more rich in value than the single heritage point. In order to achieve the "one plus one greater than two" combination effect.

This article analyzes and studies the architectural heritage that has been included in the scope of protection (national security, provincial protection, county insurance, municipal protection, etc.), but only makes a basic description of the spatial structure and intangible cultural heritage of traditional villages. This part will be the focus of follow-up research. The heritage resources of Tea Road Ceremony along Zuishui River are extremely rich. Some of the heritage sites are relatively remote and the research work is very difficult. In addition, due to the lack of historical data related to the tea ceremony, the historical research is not yet comprehensive and in-depth, which is the difficulty of follow-up research where you are.

References

- [1] Yu Kongjian, Zhu Qiang, Li Dihua. Construction of China's Grand Canal Industrial Heritage Corridor: Assumptions and Principles (Part one), Construction Science and Technology, 2007 (11): 28 -31.
- [2] Wang Zhifang, Sun Peng. Heritage Corridor - A Newer Method for the Conservation of American Historical and Cultural Heritage, J. of Chinese Garden, 2001 (5): 85-88.
- [3] Chen Hui. The Tea Road Ceremony (Hunan section) investigation and evaluation report. Hunan: Hunan University, 2016.
- [4] Yu Kong Jian, Xi Xuesong, Li Dihua, and so on. China National Linear Cultural Heritage Network Construction, Hunan Geography, 2009.24 (3): 11-16.
- [5] Qiao Dashan, Feng Bing, Zhai Huimin. A Preliminary Study on the New Method of Heritage Protection Planning in Guilin - Establishing the Lijiang River Heritage Corridor, Tourism Tribune, 200711 (22) .28-31.
- [6] Li Xiaobo, Approaches to Transform the Archaeological Cultural Relics of the Three Gorges and the Space-time Construction of the Three Gorges Heritage Corridor, Tourism Science, 2006,20 (01): 12-17.
- [7] Yuan Yanhua, Xu Jiangang, Zhang Xiang. Study on Construction of Urban Heritage Corridor Network Based on Suitability Analysis - A Case Study of Luoyang in the Ancient Capital. Remote sensing information, 2014 (03): 117-124.
- [8] Banai-Kashani R. A new method for site suitability analysis: The analytic hierarchy process Environ. Manage, 1989(13): 685-693.
- [9] Steiner, F. Resource suitability: Methods for analyses, Environ. Manage, 1983 (11):379-388.
- [10] Dong L.Chen B.Government Guidance and Market Operation of Tianjin Historical Architecture Heritage Preservation. Journal of Shenyang Jianzhu University, 2011.
- [11] Fan H. Branding a place through its historical and cultural heritage: The branding project of Tofu Village in China. Place Branding and Public Diplomacy, 2014, (4):279-287.
- [12] Zhang Song. An Introduction to Conservationism in Historical Cities --A Holistic Approach to Cultural Heritage and Historical Environment. Shanghai: Tongji University Press, 2008.
- [13] Yang Liu, Zhang Ning,Wang Shumei.The Way of Interpreting Cultural Tourism Routes with The tea Road Ceremony as an Example, Fujian Tea, 2016, 38 (10): 124-125.
- [14] Liu Qiuju, Yang Zaotian. Exploring the Protection and Exploitation of the Tea Road Cultural Heritage in China - A Case Study of Hunan Province, J. Hunan Social Sciences, 2015 (4): 203-207.
- [15] Wang Jianbo, Ruan Yisan. Cultural line as a heritage type - interpretation of the cultural line charter, Journal of Urban Planning, 2009,04: 86-92.
- [16] Ding Xiaoli. Study on the Spatial Distribution of the Heritage Corridor of Guyuan Section of Silk Road in Ningxia, J. Xi'an University of Architecture and Technology, 2008.05.