



Dyna

ISSN: 0012-7353

dyna@unalmed.edu.co

Universidad Nacional de Colombia
Colombia

Escobar, Freddy Humberto; Rolanda Meneses, Alba; Losada, Liliana Marcela
Straight-Line Conventional Transient Pressure Analysis for Horizontal Wells with Isolated Zones
Dyna, vol. 81, núm. 185, junio, 2014, pp. 78-85
Universidad Nacional de Colombia
Medellín, Colombia

Available in: <http://www.redalyc.org/articulo.oa?id=49631031012>

- How to cite
- Complete issue
- More information about this article
- Journal's homepage in redalyc.org

redalyc.org

Scientific Information System
Network of Scientific Journals from Latin America, the Caribbean, Spain and Portugal
Non-profit academic project, developed under the open access initiative

Straight-Line Conventional Transient Pressure Analysis for Horizontal Wells with Isolated Zones

Análisis Convencional de Pruebas de Presión en Pozos Horizontales con Zonas Aisladas

Freddy Humberto Escobar ^a, Alba Rolanda Meneses ^b & Liliana Marcela Losada ^c

^a Facultad de Ingeniería, Universidad Surcolombiana/CENIGAA, Colombia, fescobar@usco.edu.co

^b Facultad de Ingeniería, Universidad Surcolombiana/CENIGAA, Colombia, albita_meneses@hotmail.com

^c Facultad de Ingeniería, Universidad Surcolombiana/CENIGAA, lilianalosada@outlook.com

Received: January 22th, 2013. Received in revised form: January 23th, 2014. Accepted: January 30th, 2014

Abstract

It is common in the oil industry to complete horizontal wells selectively. Even, this selection is performed naturally since reservoir heterogeneity may cause segmented well performance. Segmentation may be partially open to flux due to high skin factor or low permeability bands. They can be treated as a nonuniform skin distribution. A few models have been introduced to capture these special details. Existing interpretation methodologies use non-linear regression analysis and the *TDS* technique; but, there is an absence of equations for the conventional technique. In this study, the conventional methodology is developed for the analysis of pressure transient tests in horizontal wells with isolated zones so directional permeabilities and skin factors can be obtained. The developed expressions were tested successfully with several examples reported in the literature and compared to results from other sources.

Key Words: Horizontal well, isolation zones, partial completion, flow regimes.

Resumen

Es común en la industria petrolera completar los pozos en forma selectiva. Incluso, dicha selección se efectúa de forma natural ya que la heterogeneidad del yacimiento podría causar comportamiento segmentado del pozo. La segmentación podría estar parcialmente abierta al flujo en virtud a la alto factor de daño bajas vetas de permeabilidad. Ellas pueden tratarse como una distribución no uniforme del factor de daño. Algunos pocos modelos se han introducido para capturar estos detalles especiales. Las metodologías de interpretación existentes usan análisis de regresión no lineal y la técnica *TDS*; pero, se adolece de ecuaciones para el método convencional. En este estudio se desarrolla la metodología convencional para la interpretación de pruebas de presión en pozos horizontales con zonas aisladas de modo que se puedan estimar las permeabilidades y los factores de daño. Las expresiones desarrolladas se probaron satisfactoriamente con varios problemas encontrados en la literatura y se compararon con los resultados procedentes de otras fuentes.

Palabras clave: Pozo horizontal, zonas aisladas, completamiento parcial, regímenes de flujo.

1. Introduction

Selective completion is a current operation performed on horizontal wells. Reservoir heterogeneity may also cause segmentation due to low permeability bands [1]. As indicated by [1], [2] and [3] the existence of an intermediate late radial or pseudoradial flow regime is the most important feature of the transient-pressure response of segmented horizontal wells. They found that the semilog slope of the late radial flow regime is affected by the number of equal-length segments.

Horizontal wells with isolated areas can be a practical solution for such problems presented in different formations such as gas/water coning, sand production and asphalt production; however, it has a great impact in the skin factor. Currently, the characterization of locations is important since it is a valuable tool which allows for the determination

of the best exploitation scenario.

Recently, [4] introduced a new model for the type of geometry here discussed. They made a detailed discussion of the importance and impact of selective horizontal well completion. Also, they formulated the *TDS* methodology, initially introduced by [5] for horizontal wells, for interpretation of well pressure tests in segmented horizontal wells. In this study, the solution proposed by [4] is used to develop equations to be used in the conventional straight-line methodology and successfully applied to field examples provided by [4] and [6]. The results of the estimated permeabilities in the *x* and *z* directions and skin factors were compared with those from [4] using the *TDS* technique. Escobar et al. [7] have indicated the importance of the traditional-conventional analysis even in transient-rate tests interpretation.

So far, the only available methodology for well test interpretation in the systems under consideration was the one presented by [4] following the philosophy of the TDS technique [8]. However, the importance of its application is based upon some examples recently reported in the literature. For instance, [9] presented some examples for the use of zonal isolations in horizontal well completions in a hydraulic fracturing treatment which was conducted with five packer isolation systems so that five isolated zones were created. On the other hand, [10] introduced some field examples for well testing procedures in multi-zone openhole completion wells in which casing annulus packers, instead of cement, were used to provide the isolations.

2 Formulation

2.1. Mathematical Model

The model developed by [1] corresponds to the dimensionless pressure governing equation based upon the following assumptions: (1) homogeneous reservoir, with constant and uniform thickness with closed top and bottom boundaries. (2) Anisotropic system but with constant porosity and permeability in each direction, (3) negligible frictional and gravitational effects, and (4) the well extends in the midpoint of the formation height.

$$P_D(x_D, y_D, z_D, t_D) = \frac{\sqrt{\pi}}{2nL_{pD}} \int_0^{\frac{y_D^2}{4t_D}} \frac{e^{-\tau}}{\sqrt{\tau}} \times \left[\sum_{n=1}^{\infty} \left[\operatorname{erf} \left(\frac{x_D - nL_{zD} - (n-1)L_{pD}}{2\sqrt{\tau}} \right) + \operatorname{erf} \left(\frac{x_D - n(L_{zD} + L_{pD})}{2\sqrt{\tau}} \right) \right] \right] \times \left[1 + 2 \sum_{N=1}^{\infty} e^{(-N^2\pi^2 L_D^2 \tau_D)} \cos(N\pi z_{wD}) \cos(N\pi(\bar{z}_D + z_{wD})) \right] d\tau_D \quad (1)$$

In which the dimensionless parameters are as follows:

$$x_D = \frac{x - x_w}{L_w} \quad (2)$$

$$y_D = \frac{y - y_w}{L_w} \sqrt{\frac{k_x}{k_y}} = \frac{r_w}{L_w} \sqrt{\frac{k_x}{k_y}} \quad (3)$$

$$z_D = \frac{z - z_w}{L_w} \sqrt{\frac{k_x}{k_z}} \quad (4)$$

$$z_{wD} = \frac{z_w}{h} \quad (5)$$

$$\bar{z}_D = \frac{z - z_w}{h} = z_D L_D \quad (6)$$

$$L_D = \frac{L_w}{h} \sqrt{\frac{k_z}{k_x}} \quad (7)$$

$$L_{zD} = \frac{L_z}{L_w} \quad (8)$$

$$L_{pD} = \frac{L_p}{L_w} \quad (9)$$

$$t_D = \frac{k_x t}{\phi \mu c_t L_w^2} = \frac{\eta_x t}{L_w^2} \quad \text{where: } \eta_x = \frac{k_x}{\phi \mu c_t} \quad (10)$$

$$P_{D(x_D, y_D, z_D, t_D)} = \frac{2\pi \sqrt{k_x k_y} h \Delta P_{i(x, y, z, t)}}{q \mu B} \quad (11)$$

2.2. General equation of horizontal wells with isolated zones

Flow regimes in horizontal wells depend upon several issues mainly related to geometry. When the ratio of the wellbore length to the reservoir thickness, LD, is less than 5 the well acts a single source/sink, then, early spherical flow develops. As example of such case is sketched in Fig. 1. If $5 < LD < 20$ then, vertical early-radial flow takes places, however, if LD becomes larger than 20 then early-radial flow cannot be seen since the formation thickness results too thin compared to the wellbore length and the top and bottom of the formation are quickly reached.

As stated before, radial flow regime develops in short horizontal wells ($L_D=20$) with or without isolated zones. The governing expression presented by [4] is given by:

$$P_D = \frac{1}{4nL_{pD}L_D} \left[\ln \left(\frac{t_D}{y_D^2 + z_D^2} \right) + 0.80907 \right] + \frac{s_m}{nL_{pD}L_D}, \quad (12)$$

$$Ei \left(-\frac{y_D^2 + z_D^2}{4t_D} \right) \leq 0.01$$

When $Z=0$, Equation 12 becomes:

$$P_D = \frac{1}{4nL_{pD}L_D} \left[\ln \left(\frac{t_D}{y_D^2 + z_D^2} \right) + 0.80907 + 4s_m \right] \quad (13)$$

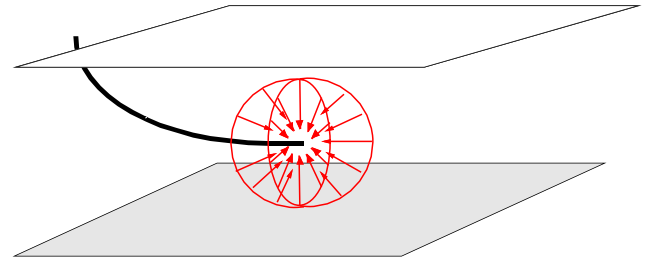


Figure 1. Spherical flow regime in a horizontal well with selective completion

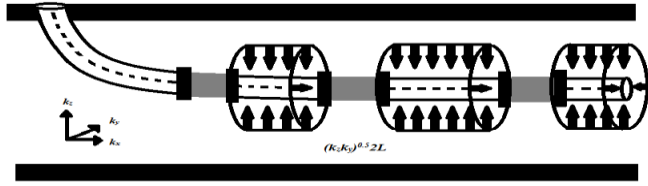


Figure 2. Intermediate radial flow regime, after [6]

Replacing the dimensionless quantities in Equation (13), dividing by the natural log of 10 and solving for the well-flowing pressure, it yields:

$$P_{wf} = P_i - \frac{81.28q\mu B}{nL_p\sqrt{k_y k_z}} \times \left(\log \frac{t}{\phi\mu c_t \left[\left(r_w \sqrt{1/k_y} \right)^2 + \left(z - z_w \sqrt{1/k_z} \right)^2 \right]} - 3.2275 + 4s_m \right) \quad (14)$$

The slope, m_{ER} , from a semilog plot of pressure versus time allows for the estimation of $(k_y k_z)^{0.5}$,

$$\sqrt{k_y k_z} = \frac{81.28q_t \mu B}{nL_p m_{ER}} \quad (15)$$

The sketch of Fig. 2 shows the development of an intermediate radial flow when a horizontal well possesses isolated zones indicating that $5 < L_D < 20$. The governing dimensionless pressure derivative equation for such flow regime is:

$$(t_D * P_D') = \frac{0.5}{n} \quad (16)$$

Since the semilog slope is natural log of 10 times higher than the pressure derivative value, Equation (16) allows one to find an expression to find the horizontal permeability, $(k_x k_y)^{0.5}$ from the semilog slope, m_{ER} , once the dimensionless pressure derivative is placed in oilfield units;

$$\sqrt{k_x k_y} = \frac{162.6q\mu B}{n h m_{ER}} \quad (17)$$

As described by Fig. 3, the pseudo-spherical (or two hemispherical) flow develops when the length of the

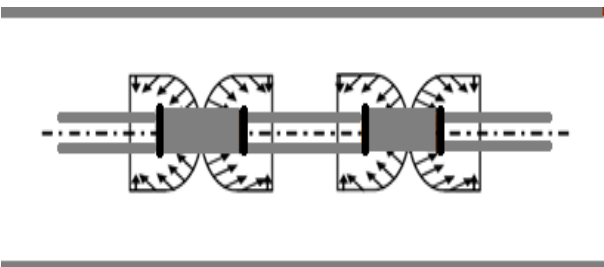


Figure 3. Hemispherical flow regime, after [6]

perforated area is so short compared to the formation thickness forcing the well to act as a single source/sink. The dimensionless pressure derivative governing equation presented by [4] is;

$$(t * P_D')_{sp} = \frac{1}{4\sqrt{\pi t_D}} \quad (18)$$

Integration of the Equation (18) leads us to obtain the dimensionless pressure for such flow regime:

$$P_D = \frac{1}{2\sqrt{\pi t_D}} + s_{ps} \quad (19)$$

Replacing the dimensionless terms, we obtain:

$$\frac{\sqrt{k_x k_y} h \Delta P}{141.2q\mu B} = \frac{1}{2\sqrt{\frac{\pi \times 0.0002637k_x t}{\phi\mu c_t L_w^2}}} + s_{ps} \quad (20)$$

The slope of a Cartesian plot of pressure versus the inverse square root of time, mps, allows one to calculate $(k_x k_y)^{0.5}$, knowing mps of a Cartesian graph.

$$k_x = \frac{2453q\mu B L_w}{h m_{ps}} \sqrt{\frac{\phi\mu c_t}{k_y t}} \quad (21)$$

Needless to say that the pseudo-spherical skin factor can be obtained from the intercept of such a plot.

In long horizontal wells ($L_D > 20$), the early radial flow regime is hardly seen while early linear flow is dominant in the proximities to the well. The governing dimensionless pressure derivative equation for this linear flow is given by [4],

$$(t_D * P_D')_{EL} = \frac{\sqrt{\pi t_D}}{2nL_{pD}} \quad (22)$$

Integration of Equation 22 leads to the dimensionless pressure governing equation;

$$P_D = \frac{\sqrt{\pi t_D}}{nL_{pD}} + s_t \quad (23)$$

After replacing the dimensionless quantities, we obtain:

$$\frac{\sqrt{k_y} h \Delta P_t}{q\mu B} = \frac{4.064 \sqrt{\frac{t}{\phi\mu c_t}}}{nL_p} + s_t \quad (23)$$

Equation (23) suggests that a plot of pressure versus the square root of time provides a straight line whose slope m_{EL} can be used to estimate the square root of k_y ,

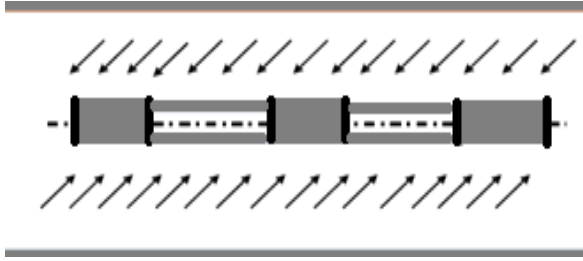


Figure 4. System of early lineal flow for long horizontal wells with a high number of isolated zones, after [6]

$$\sqrt{k_y} = \frac{4.064q\mu B}{nL_p h m_{EL}} \sqrt{\frac{t}{\phi\mu c_t}} \quad (24)$$

Fig. 4 shows that once early-radial flow vanishes, the well acts as a hydraulic fracture, then linear flow develops. A long horizontal well ($L_D > 20$) with a high number of isolated zones also exhibits an early linear flow regime which is effective to the whole wellbore. The dimensionless pressure derivative governing equation was presented by [4] as follows:

$$(t_D * P_D')_{EL} = \frac{\sqrt{\pi t_D}}{2nL_{zD}} \quad (25)$$

After integration of Equation 25, we obtain:

$$P_D = \frac{\sqrt{\pi t_D}}{nL_{zD}} + s_i \quad (26)$$

Once the dimensionless terms are replaced the expression for the dimensionless pressure is presented:

$$\frac{\sqrt{k_y} h \Delta P_i}{q\mu B} = \frac{4.064}{nL_z} \sqrt{\frac{1}{\phi\mu c_t}} + s_i \quad (27)$$

A plot of pressure versus the square root of time should be a straight line which slope, m_{EL} , allows the estimation of $k_y^{0.5}$,

$$\sqrt{k_y} = \frac{4.064q\mu B}{nL_p h m_{EL}} \sqrt{\frac{1}{\phi\mu c_t}} \quad (28)$$

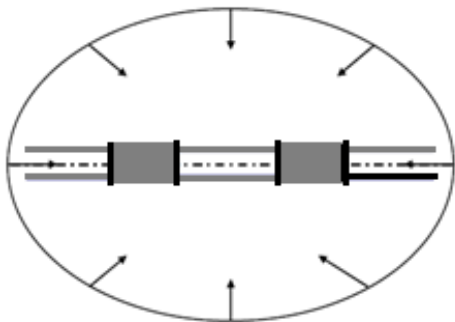


Figure 5. Pseudoradial flow for horizontal wells with isolated areas

At later time, the pseudoradial or late radial flow regime develops in the horizontal plane without any influence of the vertical permeability. See Fig. 5. The dimensionless pressure governing equation was also introduced by [4] as follows:

$$P_D(x_D, y_D, z_D, t_D) = \frac{1}{2} \left[\ln t_D + \frac{2s_i}{L_{pD} L_D} \right] \quad (29)$$

In oilfield units;

$$P_{wf} = P_i - \frac{162.6q_i\mu B}{\sqrt{k_x k_y} h} \left[\log \left(\frac{k_x t}{\phi\mu c_i L_w^2} \right) + \frac{0.8686s_i h}{L_p \sqrt{k_z}} - 3.5789 \right] \quad (30)$$

This flow regime corresponds to the radial flow regime observed in vertical wells. The dimensionless pressure derivative equation is:

$$(t_D * P_D')_{PR} = 0.5 \quad (31)$$

Equation (31) is useful to calculate the horizontal permeability ($k_x k_y$)^{0.5} if the semilog slope of a plot of pressure versus time, m_{PR} , is estimated during this flow regime, as:

$$\sqrt{k_x k_y} = \frac{162.6q\mu B}{h m_{PR}} \quad (32)$$

Such later flow regimes as late linear and pseudosteady state are similar to conventional horizontal wells.

Different expressions to estimate the skin factors are provided in Appendix A.

3. Examples

Example 1 was taken from [4]. Examples 2 and 3 were taken from [6]. In both cases the examples were worked by the TDS technique.

3.1. Example 1

Fig. 6 presents pressure and pressure derivative data for a pressure drawdown test run in a horizontal well having two equal-length isolated zones, each of 400 ft. Other known reservoir and well data are:

$$\begin{aligned} q &= 500 \text{ STB/D} & \phi &= 0.05 & \mu &= 0.5 \text{ cp} \\ c_i &= 1 \times 10^{-6} \text{ psi}^{-1} & h &= 62.5 \text{ ft} & L_w &= 2000 \text{ ft} \\ r_w &= 0.5 \text{ ft} & P_i &= 4000 \text{ psi} & L_z &= 2 \times 400 \text{ ft} \\ L_p &= 2 \times 600 \text{ ft} & B &= 1.2 \text{ bbl/STB} \\ n &= 2 \end{aligned}$$

Estimate formation permeability in all directions using the conventional technique.

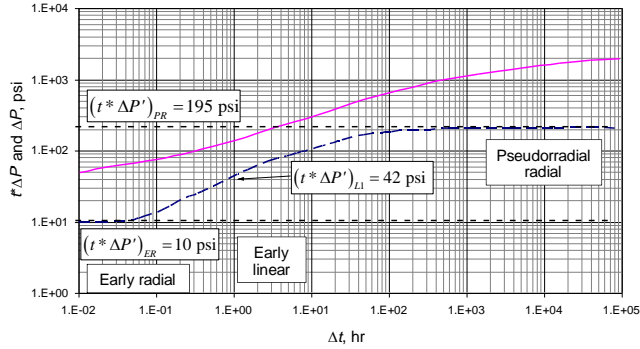


Figure 6. Log-log plot of pressure and pressure derivative vs. time for example 1. After [4]

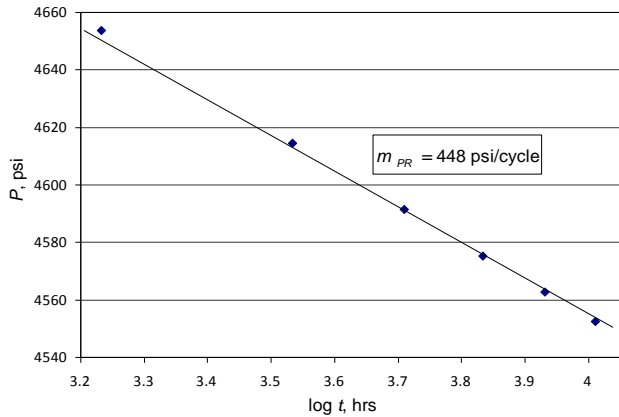


Figure 7. Semilog plot of pressure vs. time during pseudoradial flow regime for example 1

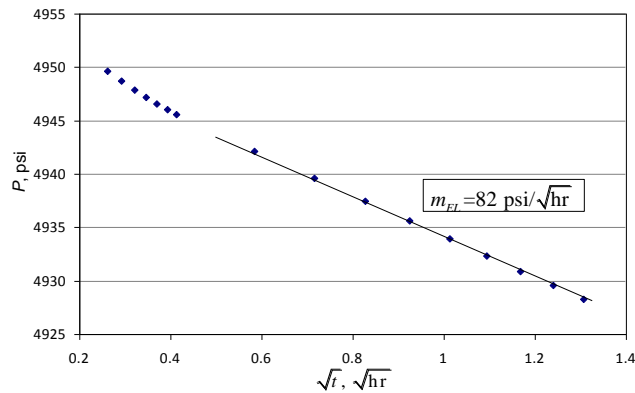


Figure 8. Cartesian plot of pressure vs. the square root of time for example 1 (early linear flow)

Solution. Three flow regimes are clearly seen in Fig. 6: early radial, early linear and pseudoradial. A semilog slope m_{PR} of 448 psi/cycle is found from Fig. 7 during the late radial flow regime. Equation 32 allows estimating a horizontal permeability, $(k_y k_z)^{0.5}$ of 0.87 md. The Cartesian plot of pressure versus the square root of time given in Fig. 8 provides a slope, m_{EL} , of 82 psi/hr^{0.5}. Using Equation 24 a value of k_y of 1.57 md is found. Knowing $(k_x k_y)^{0.5}$ and k_y , a value of k_x of 0.49 md is readily obtained. From Fig. 9, a semilog slope, m_{ER} , of 23 psi/cycle during the early radial flow regime is used to calculate a value of

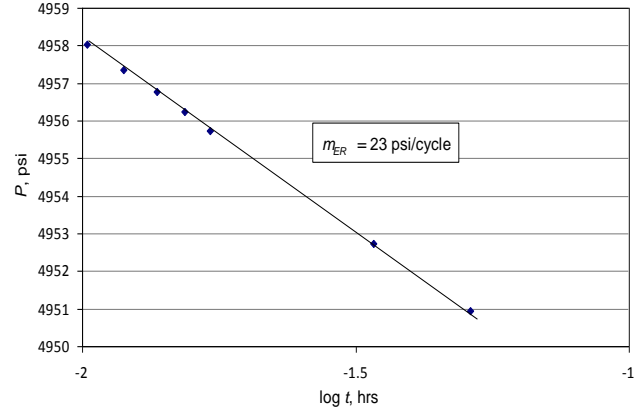


Figure 9. Semilog plot of pressure vs. time during early radial flow regime for example 1

$(k_y k_z)^{0.5}$ of 0.88 md using Equation 17. From this, a value of 0.49 for k_z is then found.

3.2. Example 2

The pressure and pressure derivative data for a drawdown test of a horizontal well are given in Fig. 10. Other relevant data are given as follows:

$q = 4000$ BPD	$P_i = 5000$ psia
$L_w = 4000$ ft	$c_l = 0.000002$ psi ⁻¹
$\phi = 0.1$	$B = 1.125$ rb/STB
$r_w = 0.566$ ft	$h = 125$ ft
$\mu = 1$ cp	$n = 2$
$L_p = 800$ ft	$k_x = 8$ md

Solution. Early radial, early linear, intermediate radial and pseudoradial flow regimes are clearly seen in the pressure derivative curve of Fig. 10. A slope, m_{IR} , of 80.92 psi/cycle is obtained from the semilog plot given in Fig. 11 which allows to estimate a $(k_y k_z)^{0.5}$ value of 2.82 md using Equation 15. Then, using a slope of 100.68 psi/hr^{0.5} read from Fig. 12, a y-direction permeability of 4.12 md is obtained by means of Equation 24. k_z is readily found from $(k_y k_z)^{0.5}$ and k_y to be 1.94 md.

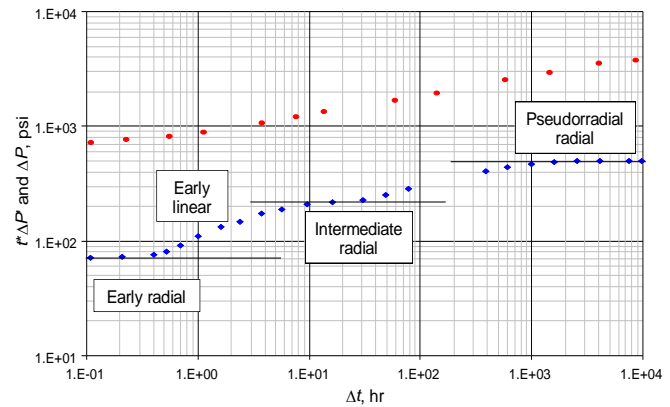


Figure 10. Log-log plot of pressure and pressure derivative vs. time for example 2. After [6]

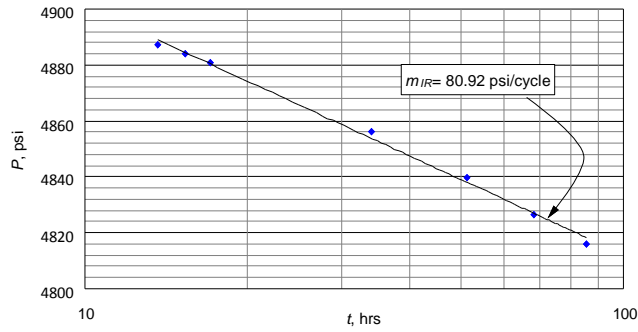


Figure 11. Semilog plot of pressure vs. time for example 2 (intermediate radial flow)

3.3. Example 3

Figure 13 contains the pressure and pressure derivative data from a drawdown test of a horizontal well presented by [6].

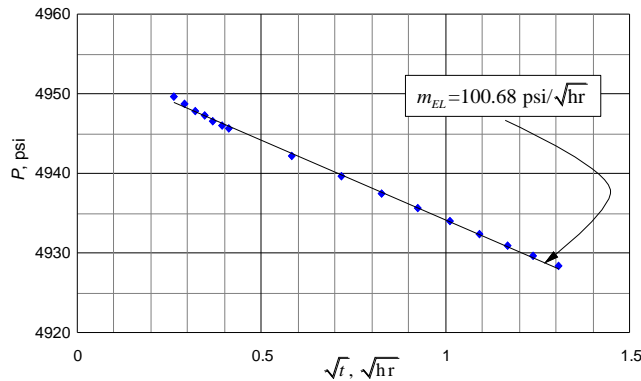


Figure 12. Cartesian plot of pressure vs. the square root of time for example 2 (early linear flow)

Reservoir, fluid and well parameters are given below:

$q = 1000$ BPPD	$P_i = 5000$ psi
$L_w = 6000$ ft	$c_f = 0.000002$ psi ⁻¹
$\phi = 0.1$	$B = 1.25$ bbl/STB
$r_w = 0.7$ ft	$h = 53$ ft
$\mu = 1$ cp	$n = 4$
$L_p = 450$ ft	$k_z = 10$ md

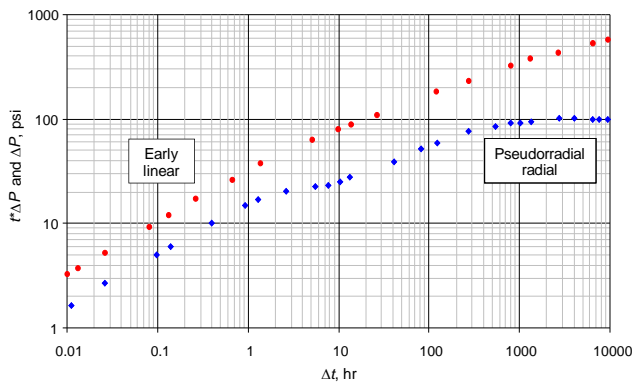


Figure 13. Log-log plot of pressure and pressure derivative vs. time for example 3. After [6]

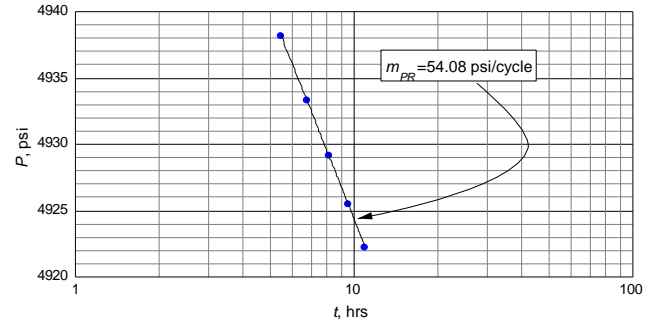


Figure 14. Semilog plot of pressure vs. time during pseudoradial flow regime for example 3

Solution. From the pressure and pressure derivative log-log plot of Fig. 13 the early linear and pseudoradial flow regimes are clearly observed. The semilog slope during the pseudoradial flow regime, Figure 14, $m_{PR} = 54.08$ psi/cycle, leads to the estimation of a horizontal permeability value ($k_x k_y$)_{0.5} of 17.73 md. A Cartesian slope during linear flow, $m_{EL} = 30.71$ psi/hr^{0.5}, obtained from Fig. 15 is used to estimate a $k_y = 15.04$ md from Equation 24. k_x is then estimated to be 20.9 md.

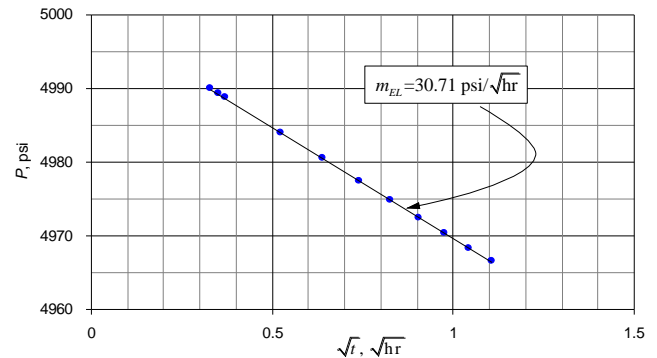


Figure 15. Cartesian plot of pressure vs. the square root of time for example 3 (early linear flow)

4. Comments on the Result

Table 1 presents the results obtained from this work and compared to the values reported by [1] and [2]. Notice that the deviation errors of the results obtained in this work are acceptable indicating that the equations developed work well.

Table 1.
Comparison of results.

Example	Para-meters	This Study	TDS - Reference	% error
1	k_x , md	0.48	0.5 [1]	4.9
	k_y , md	1.57	1.49 [1]	4.2
	k_z , md	0.49	0.52 [1]	4.5
2	k_y , md	4.12	4.02 [2]	2.49
	k_z , md	1.93	1.99 [2]	2.76
3	k_x , md	20.9	19.87 [2]	5.18
	k_y , md	15.04	15.14 [2]	0.66

5. CONCLUSION

The straight-line conventional method for pressure-transient analysis was complemented with new equations for horizontal wells with isolated zones. The equations were successfully applied to examples reported in the literature and provided similar results to the *TDS* technique.

Nomenclature

B	Oil formation factor, rb/STB
b_x	Well position inside the reservoir
c_t	Total system compressibility, 1/psi
h	Formation thickness, ft
k	Permeability, md
L	Total horizontal well length, ft
L_D	Ratio of the horizontal wellbore length to the reservoir thickness L_w/h
L_p	Perforated zones length, ft
L_z	Isolated zones length, ft
m	Slope
N	An integer from 1 to infinite. For practical purposes from 1 to 100
n	Number of horizontal-well sections
P_i	Initial reservoir pressure, psi
P_{wf}	Well-flowing pressure, psi
P	Pressure, psi
s	Skin factor
q	Flow rate, BPD
t	Time, hr
z	Well position along the z -axis
z_D	Dimensionless well position along the z -axis
z_w	Distance from wellbore to formation bottom

Greek

Δ	Change, drop
ϕ	Porosity
μ	Oil viscosity, cp
τ	Integration variable - time

Suffices

D	Dimensionless
EL	Early linear
ER	Early radial
ps	Pseudo-spherical
int	Intercept
IR	Intermediate radial
m	Mechanical
PR	Pseudoradial or late radial
t	Total
x, y, z	Coordinates

Appendix A. Skin factor Equations

The mechanical skin factor from Equation 14 is:

$$s_m = \frac{\Delta P_{int} n L_p \sqrt{k_y k_z}}{325.12 q_i \mu B} + 0.8068 \quad (A.1)$$

The pseudo-spherical skin factor from Equation 20 is:

$$s_{ps} = \frac{141.2 q \mu B}{\sqrt{k_x k_y} h \Delta P_{int}} \quad (A.2)$$

The total skin factor from Equation 23 is:

$$s_t = \frac{\sqrt{k_y} h \Delta P_{int}}{q \mu B} \quad (A.3)$$

The total skin factor from Equation 30 is:

$$s_t = \frac{L_p \sqrt{\frac{k_z}{k_x}} \left(\frac{\Delta P_{int} \sqrt{k_x k_y} h}{162.6 q \mu B} + 3.5789 \right)}{0.8686 h} \quad (A.4)$$

References

- [1] Kamal, M.M., Buhidma, I.M., Smith, S.A., and Jones, W.R., Pressure Transient Analysis for a Well with Multiple Horizontal Sections. Paper SPE 26444, SPE Annual Technical Conference and Exhibition, Houston, 3-6 October. 1993
- [2] Ozkan, E., Analysis of Horizontal Well-Responses: Contemporary vs. Conventional. SPEERE 4 (4), pp. 260-269, 2001.
- [3] Yildiz, T. And Oskan, E., Transient Pressure Behavior of Selectively Completed Horizontal Wells. Paper SPE 28388, SPE Annual Technical Conference and Exhibition, New Orleans, USA, pp. 25-28 Sep., 1994.
- [4] Al Rbeawi, S. And D. Tiab, D., Effect of the Number and Length of Zonal Isolations on Pressure Behavior of Horizontal Wells. Paper SPE 142177, SPE production and operations Symposium held in Oklahoma City, Oklahoma, USA, pp. 27-29 March. 2011.
- [5] Engler, T. W. And Tiab, D., Analysis of Pressure and Pressure Derivatives without Type-Curve Matching. 6- Horizontal Well Tests in Anisotropic Reservoirs. Journal of Petroleum Science and Engineering, 15, pp. 153-168, 1996.
- [6] Al Rbeawi, S., Interpretation of Pressure Transient Tests of Horizontal Wells With Multiple Hydraulic Fractures and Zonal Isolations. [PhD Thesis]. Norman, OK: The University of Oklahoma, 2012.
- [7] Escobar, F.H., Rojas, M.M. and Cantillo, J.H., Straight-Line Conventional Transient Rate Analysis for Long Homogeneous and Heterogeneous Reservoirs. Dyna. year 79, (172), pp. 153-163, 2012
- [8] Tiab, D., 1995, Analysis of Pressure and Pressure Derivative without Type-Curve Matching: 1- Skin and Wellbore Storage". Journal of Petroleum Science and Engineering, Vol 12, pp. 171-181. 1995.
- [9] Maddox, B., Wahrton, M., Hinkie, R., Farabee, M. and Ely, J., Cementless Multi-Zone Horizontal Completion Yields Three-Fold Increase". Paper IADC/SPE 112774 presented at the IADC/SPE Drilling Conference in Orlando, FL. March, pp. 4-6, 2008.
- [10] Brooks, R.T. and Scott, S., Improvement and Testing Multi-Zone Open-Hole Carbonate Formations. Paper SPE 119426 presented at the Middle East Oil and Gas Conference. Bahrain. March, pp. 15-18, 2009.

Freddy Humberto Escobar, received a BSc degree from Universidad de America in 1989, both the MSc received in 1995 and the PhD in 2002 were obtained from the University of Oklahoma. All his degrees are in Petroleum Engineering. Dr. Escobar joined Universidad Surcolombiana in 1996 and is the director of the Research Group on Transient Well Testing and the president of Cenigaa (Research Center for Sciences and geo-agro-environmental resources).

Alba Rolanda Meneses, received her BSc in Petroleum Engineering from Universidad Surcolombiana in 2013. She has recently joined Schlumberger Limited as a field engineer.

Liliana Marcela Losada, received her BSc in Petroleum Engineering from Universidad Surcolombiana in 2013.