

XBP1 is Critical to Protect Cells from Endoplasmic Reticulum Stress: Evidence from Site-2 Protease-deficient Chinese Hamster Ovary Cells

Hiderou Yoshida^{1,2}, Satomi Nadanaka¹, Ryuichiro Sato³, and Kazutoshi Mori^{1*}

¹Department of Biophysics, Graduate School of Science, Kyoto University, Kyoto 606-8502, Japan,

²PRESTO, Japan Science and Technology Corporation, Saitama 332-0012, Japan, and ³Department of Applied Biological Chemistry, Graduate School of Agricultural and Life Sciences, The University of Tokyo, Tokyo 113-8657, Japan

ABSTRACT. XBP1 is a transcription factor downstream of IRE1, a transmembrane protein in the endoplasmic reticulum (ER) which functions as a sensor and transducer of ER stress. XBP1 mRNA is constitutively expressed at a low level as an intron-containing precursor mRNA (unspliced mRNA), which is subject to IRE1-mediated splicing reaction upon ER stress to produce the active form of XBP1, pXBP1(S). Because the XBP1 promoter carries a perfect ER stress-response element, namely, the cis-acting element responsible for the induction of ER chaperones, and XBP1 mRNA is induced in response to ER stress with a time course similar to that of ER chaperone mRNAs, it is conjectured that transcription factor ATF6, activated immediately upon ER stress, induces the transcription of not only ER chaperone genes but also of XBP1 gene, such that pXBP1(S) produced by the splicing of an increased level of XBP1 mRNA escapes from proteasome-mediated degradation. Here, we examined this notion by determining the induction of XBP1 mRNA and pXBP1(S) in mutant Chinese hamster ovary (M19) cells deficient in Site-2 protease, which executes the last step of ER stress-induced activation of ATF6. We found that the induction of XBP1 mRNA and pXBP1(S) was greatly reduced in M19 cells as compared with wild-type cells, leading to a marked reduction in the extent of induction of XBP1-target gene. M19 cells were much more sensitive to ER stress than wild-type cells. Importantly, overexpression of XBP1 unspliced mRNA in M19 cells reversed all of these phenotypes. We concluded that ATF6-mediated induction of XBP1 mRNA is important to the production of pXBP1(S), activation of XBP1-target genes, and protection of cells from ER stress.

Key words: endoplasmic reticulum/protein folding/molecular chaperone/transcription factor/mRNA splicing

Introduction

Under normal conditions, the endoplasmic reticulum (ER) is equipped with two mechanisms to ensure the quality of newly synthesized secretory and transmembrane proteins that pass through it, namely the productive folding mechanism and ER-associated degradation (ERAD) mechanism (Gething and Sambrook, 1992; Helenius *et al.*, 1992; Kopito, 1997). A third mechanism is activated when unfolded proteins accumulate in the ER under ER stress

conditions, a transcriptional program coupled with intracellular signaling from the ER to the nucleus termed the unfolded protein response (UPR) (Harding *et al.*, 2002; Mori, 2000; Patil and Walter, 2001; Schroder and Kaufman, 2005). The main purpose of the UPR is to increase the capacity of both productive folding and ERAD mechanisms by transcriptionally inducing their constituents. Specifically, induced ER-localized molecular chaperones and folding enzymes (hereafter collectively referred to as ER chaperones) refold unfolded proteins accumulated in the ER, whereas induced ERAD components deliver them to the cytoplasm for degradation by the ubiquitin-dependent proteasome system (Tsai *et al.*, 2002; Wilhovsky *et al.*, 2000). Mammalian cells have evolved three signaling pathways for the UPR based on three transmembrane proteins expressed in the ER that sense ER stress and transmit a signal across the ER membrane, namely, the IRE1, PERK and ATF6 pathways. Among them, the IRE1 and ATF6

*To whom correspondence should be addressed: Kazutoshi Mori, Department of Biophysics, Graduate School of Science, Kyoto University, Kitashirakawa-Oiwake, Sakyo-ku, Kyoto 606-8502, Japan.

Tel: +81-75-753-4067, Fax: +81-75-753-3718

E-mail: kazu.mori@bio.mbox.media.kyoto-u.ac.jp

Abbreviations: CHO, Chinese hamster ovary; ER, endoplasmic reticulum; ERSE, ER stress-response element; ERAD, ER-associated degradation; UPR, unfolded protein response; UPR, UPR element; WT, wild-type.

pathways are directly involved in transcriptional induction of ER chaperones and ERAD components (Mori, 2003).

IRE1 is a type I transmembrane protein in the ER which possesses protein kinase and endoribonuclease activity in the cytoplasmic region. It is evolutionarily conserved from yeast to humans. ER stress-induced oligomerization and autophosphorylation results in the initiation of unconventional (frame switch) splicing of mRNA encoding a UPR-specific transcription factor (Mori, 2003). The substrate mRNA in metazoan is XBP1 mRNA (Calton *et al.*, 2002; Yoshida *et al.*, 2001a). As a result of frame switch splicing, the C-terminus of XBP1 is switched without affecting the N-terminal region carrying the DNA binding domain. Thus, XBP1 mRNA is constitutively expressed as unspliced mRNA encoding the unspliced form of XBP1, pXBP1(U), and is converted upon ER stress to spliced mRNA encoding the spliced form of XBP1, pXBP1(S). Because the new C-terminus added to pXBP1(S) functions as an activation domain, pXBP1(S) activates transcription effectively (Yoshida *et al.*, 2001a). In contrast, pXBP1(U), which contains the DNA binding domain but lacks the activation domain, functions as a negative regulator of pXBP1(S) (Yoshida *et al.*, 2006).

ATF6 is a type II transmembrane protein in the ER which carries the transcription factor domain in the cytoplasmic region and is activated by ER stress-induced proteolysis (Haze *et al.*, 2001; Haze *et al.*, 1999). Upon ER stress, ATF6 is transported from the ER to the Golgi apparatus, where it is cleaved by the sequential action of Site-1 and Site-2 proteases (Okada *et al.*, 2003; Shen *et al.*, 2002; Ye *et al.*, 2000). The cytoplasmic transcription factor domain liberated from the Golgi membrane is translocated to the nucleus to activate transcription (Yoshida *et al.*, 2000; Yoshida *et al.*, 2001b). Thus, ATF6 cannot be activated in cells lacking Site-1 or Site-2 protease (Ye *et al.*, 2000). Importantly, because the nuclear and active form of ATF6 is produced by cleavage of the preexisting precursor and membrane-embedded form of ATF6 whereas XBP1 mRNA must be spliced and then translated to produce pXBP1(S), the active form of ATF6 appears earlier than the active form of XBP1 in ER-stressed cells (Yoshida *et al.*, 2001a).

Transcriptional induction of mammalian ER chaperones is mediated by the cis-acting ER stress-response element (ERSE), the consensus of which is CCAAT-N9-CCACG (Yoshida *et al.*, 1998). Both XBP1 and ATF6 bind to the CCACG part of ERSE when the general transcription factor NF-Y occupies the CCAAT part of ERSE (Yoshida *et al.*, 2001a; Yoshida *et al.*, 2000). Thanks to this dual regulation, ER chaperones are fully induced in response to ER stress even in the absence of the IRE1-XBP1 pathway (Lee *et al.*, 2002). In contrast, a cis-acting element responsible for transcriptional induction of mammalian ERAD components has not yet been determined but is thought to be represented by the unfolded protein response element (UPRE), which was identified by polymerase chain reaction-mediated artificial

binding site selection experiments (Wang *et al.*, 2000). This notion is based on the finding that UPRE-mediated transcriptional enhancement depends on the IRE1-XBP1 pathway, and therefore does not occur in the absence of this pathway even though ATF6 is fully activated (Yoshida *et al.*, 2003). This situation is closely similar to the dependence of transcriptional induction of many mammalian ERAD components, such as EDEMs, HRD1, and Derlins (Kaneko *et al.*, 2002; Lilley and Ploegh, 2005; Oda *et al.*, 2006; Olivari *et al.*, 2005; Yoshida *et al.*, 2003). These differences in properties between ERSE and UPRE as well as those between ATF6 and XBP1 have led to the proposal of a time-dependent phase shift in the mammalian UPR, wherein the ATF6-mediated unidirectional phase (refolding only) is shifted to the XBP1-mediated bi-directional phase (refolding plus degradation), depending on the quantity or quality of unfolded proteins accumulated in the ER (Yoshida *et al.*, 2003).

Interestingly, the XBP1 promoter carries a functional ERSE, and XBP1 mRNA is thereby induced in response to ER stress with a time course similar to that of ER chaperone mRNAs (Yoshida *et al.*, 2000). It was shown that overexpression-mediated activation of IRE1 alone was insufficient for the detection of pXBP1(S) in cell lysate; however, pXBP1(S) was successfully detected when overexpression of IRE1 was combined with overexpression of XBP1 unspliced mRNA (Yoshida *et al.*, 2001a). It is therefore thought that pXBP1(S) produced at a low level is rapidly degraded by the proteasome, whereas an increased level of pXBP1(S) allows the escape from degradation and subsequent entrance into the nucleus to activate transcription. Based on these findings, it is considered that the active form of ATF6, produced rapidly in ER-stressed cells, activates the transcription of not only ER chaperone genes but also of XBP1 gene such that pXBP1(S) is produced by IRE1-mediated splicing of transcriptionally induced XBP1 mRNA. The availability of Chinese hamster ovary (CHO) cells unable to activate ATF6 due to the absence of Site-2 protease, M19 cells (Hasan *et al.*, 1994; Rawson *et al.*, 1997), thus provided us the opportunity to check whether this notion is indeed the case and also to determine the consequences of pXBP1(S) production.

Experimental Procedures

Cell culture, transfection and luciferase assay

CHO wild-type and M19 (Hasan *et al.*, 1994) cells were grown in a 1:1 mixture of Ham's F12 and Dulbecco's modified Eagle's medium supplemented with 10% fetal calf serum, 2 mM glutamine and antibiotics (100 U/ml penicillin and 100 µg/ml streptomycin sulfate) in a 5% CO₂, 95% air incubator at 37°C. Transfection was carried out by the standard calcium phosphate method (Sambrook *et al.*, 1989) as described previously (Yoshida *et al.*, 1998).

pcDNA-XBP1(unspliced) to express unspliced XBP1 mRNA was constructed previously (Yoshida *et al.*, 2001a). Luciferase assay was performed according to our published procedures (Yoshida *et al.*, 2000). pGL3-GRP78P(-132)-luc (Yoshida *et al.*, 1998) and p5xATF6-GL3 (Wang *et al.*, 2000) are called the ERSE and UPRE reporters, respectively.

Immunological techniques

Immunoblotting analysis was carried out according to the standard procedure (Sambrook *et al.*, 1989) as described previously (Okada *et al.*, 2002) using Western Blotting Luminol Reagent (Santa Cruz Biotechnology). Chemiluminescence was detected using an LAS-1000plus LuminoImage analyzer (Fuji Film). XBP1 was detected with rabbit anti-XBP1-A polyclonal antibody (Yoshida *et al.*, 2001a) which recognizes both pXBP1(U) and pXBP1(S).

Indirect immunofluorescence was carried out for cells cultured on slide glasses essentially as described previously (Haze *et al.*, 1999).

Northern blot hybridization

Total RNA was isolated from CHO cells by the acid guanidinium-phenol-chloroform method using Isogen (Nippon Gene) and analyzed by standard Northern blot hybridization (Sambrook *et al.*, 1989) using an AlkPhos direct labeling and detection system (GE Healthcare). Chemiluminescence was visualized using an LAS-1000plus LuminoImage analyzer (Fuji Film).

DNA fragmentation assay

Cells cultured in 60-mm dishes were scraped, suspended in 100 μ l of lysis buffer (10 mM Tris/HCl, pH 7.4, containing 10 mM EDTA and 1% Triton-X 100), and stood at 4°C for 10 min. The lysates were centrifuged at 14,000 rpm for 5 min and the resulting supernatants were incubated with 2 μ l of 10 mg/ml RNase (Nippon Gene) at 37°C for 1 h, followed by incubation with 2 μ l of 10 mg/ml proteinase K (Takara) at 50°C for 0.5 h. DNA was then precipitated at room temperature by adding 20 μ l of 5 M NaCl, 120 μ l of isopropanol, and 1 μ l of 10 mg/ml glycogen (Nacalai Tesque). The DNA pellet obtained by centrifugation at 14,000 rpm for 5 min was washed with 70% ethanol, dried and dissolved in 20 μ l of TE. An aliquot of recovered DNA was loaded onto a 2% agarose gel. Gels were stained with SYBR Gold (Invitrogen) and photographed under UV light.

Results

Defective induction of XBP1 and its target in M19 cells

To determine the effect of the absence of Site-2 protease on XBP1 expression, we prepared total RNA and cell lysates from wild-type (WT) and M19 CHO cells which had been treated with thapsigargin or tunicamycin, which causes ER

stress by inhibiting ER Ca²⁺-ATPase or protein N-glycosylation, respectively (Kaufman, 1999). Northern blot hybridization and immunoblotting analysis showed that the induction of XBP1 mRNA (Fig. 1A) and pXBP1(S) (Fig. 1B) in response to ER stress observed in WT cells was greatly mitigated in M19 cells, indicating the importance of ATF6-mediated induction of XBP1 mRNA in producing pXBP1(S). Accordingly, UPRE-mediated transcriptional enhancement (Fig. 1C) as well as induction of EDEM mRNA (Fig. 1D) in response to ER stress, both of which represented targets of pXBP1(S), were greatly mitigated in M19 cells as compared with WT cells.

To determine whether the cellular ability to induce XBP1 mRNA is solely responsible for the above differences between WT and M19 cells, we transfected WT and M19 cells with a plasmid to overexpress XBP1 mRNA (unspliced). As shown in Fig. 2A, pXBP1(S) was not detected in vector-transfected and unstressed WT cells (lane 1). A much higher level of pXBP1(S) was detected after the addition of tunicamycin in vector-transfected WT cells (lane 2) than vector-transfected M19 cells (lane 6), consistent with the result shown in Fig. 1A. Transfection-mediated overexpression of XBP1 unspliced mRNA resulted in the production of similar levels of pXBP1(U) in unstressed WT and M19 cells (lanes 3 and 7, respectively); a large amount of pXBP1(U) directly translated from overexpressed XBP1 unspliced mRNA could escape from proteasome-mediated degradation, although this escaped pXBP1(U) was unable to activate transcription due to the absence of the activation domain. Importantly, comparable levels of pXBP1(S) were produced after the addition of tunicamycin in WT and M19 cells overexpressing XBP1 unspliced mRNA (lanes 4 and 8, respectively), showing that the introduction of a large amount of XBP1 unspliced mRNA into M19 cells restored the ability of these cells to produce pXBP1(S) to a level comparable to that in WT cells. We showed in a preceding paper (Nadanaka *et al.*, 2006) that IRE1 was constitutively activated in M19 cells as judged from almost complete splicing of XBP1 mRNA in the absence of ER stress. This notion was supported by the detection of a small amount of pXBP1(S) in unstressed M19 cells (Fig. 1B, lanes 7 and 18; Fig. 2A, lane 5) but not in unstressed WT cells (Fig. 1B, lanes 1 and 13; Fig. 2A, lane 1). Nonetheless, marked difference in the level of pXBP1(S) detected between unstressed and tunicamycin-treated M19 cells after overexpression of XBP1 unspliced mRNA (Fig. 2A, compare lane 7 with lane 8) indicated that IRE1 was activated very weakly in unstressed M19 cells, similarly to PERK perhaps, only a small portion of which was shown to be phosphorylated and thus activated in unstressed M19 cells (Nadanaka *et al.*, 2006). This extent of activation was enough for splicing of all XBP1 mRNA expressed at a low level but far below for that overexpressed by transfection.

We then determined whether the introduction of a large

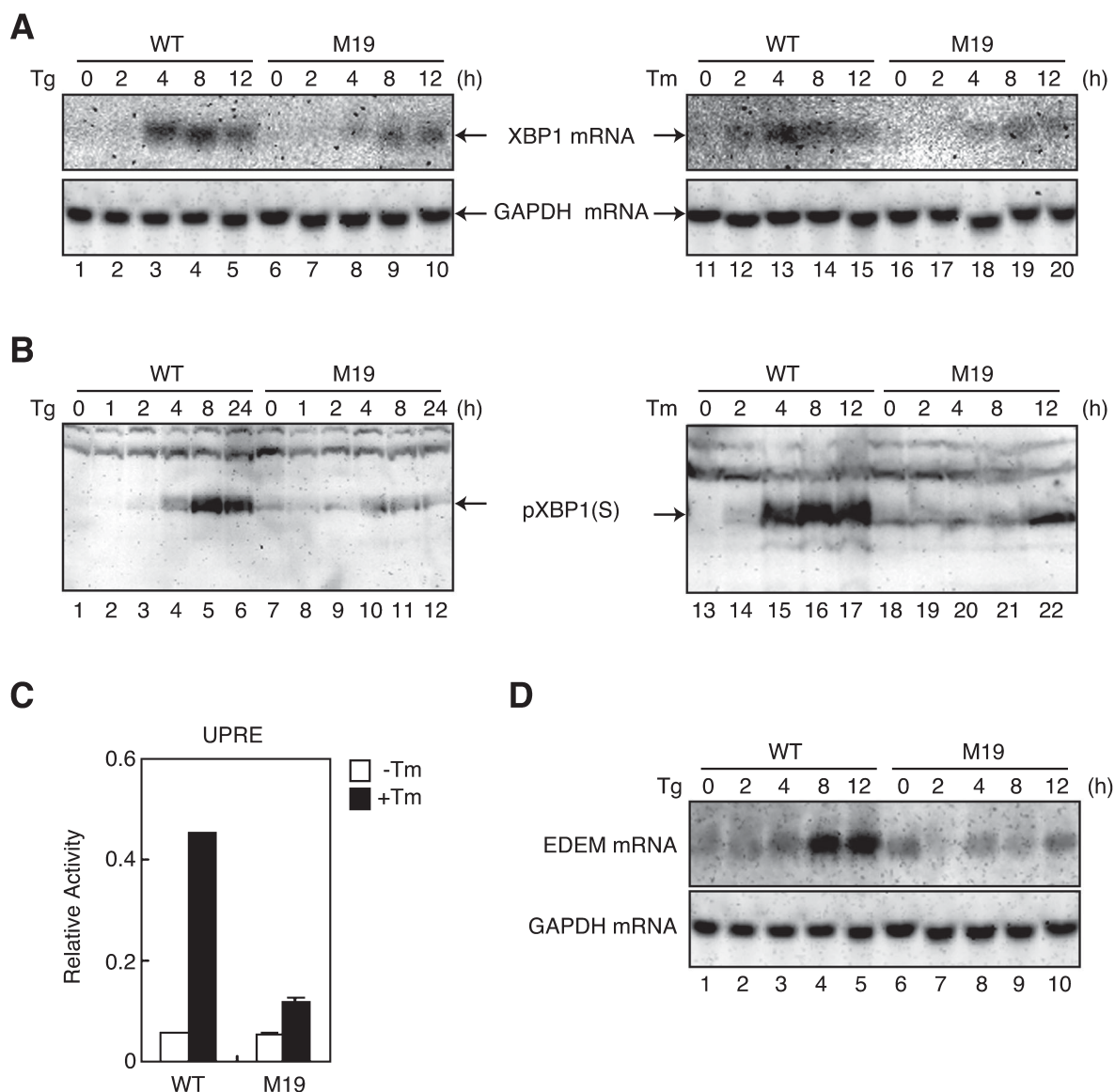


Fig. 1. Comparison of induction of XBP1 mRNA, pXBP1(S) and XBP1 targets in WT and M19 cells. (A) WT and M19 cells were treated with 1 μ M thapsigargin (Tg, lanes 1–10) or 10 μ g/ml tunicamycin (Tm, lanes 11–20) for the indicated periods. Total RNA was isolated and analyzed by Northern blot hybridization using a cDNA probe specific to XBP1 or GAPDH. (B) WT and M19 cells were treated as in (A). Cell lysates were prepared and analyzed by immunoblotting using anti-XBP1 antibody. The migration position of pXBP1(S) is indicated. (C) WT and M19 cells were transfected with the UPRE reporter gene together with reference plasmid. Twelve hours later, transfected cells were incubated in the presence (closed boxes) or absence (open boxes) of 10 μ g/ml tunicamycin (Tm) for 16 h. Luciferase activity was determined and is expressed as relative activity. (D) WT and M19 cells were treated with 1 μ M thapsigargin (Tg) for the indicated periods. Total RNA was isolated and analyzed by Northern blot hybridization using a cDNA probe specific to EDEM or GAPDH.

amount of XBP1 unspliced mRNA into M19 cells restored their ability to activate transcription. We showed in a preceding paper (Nadanaka *et al.*, 2006) that the ERSE-mediated transcriptional enhancement in response to ER stress observed in WT cells was abolished in M19 cells, and here reproduced this result in vector-transfected WT and M19 cells (Fig. 2B). When transfected with plasmid to overex-

press XBP1 unspliced mRNA, M19 cells gained the ability to enhance ERSE-mediated transcription in response to tunicamycin treatment (Fig. 2B). In accordance with this result, M19 cells were unable to induce BiP mRNA encoding a major ER chaperone when transfected with vector but became able to do so as effectively as WT cells when transfected with plasmid to overexpress XBP1 unspliced mRNA

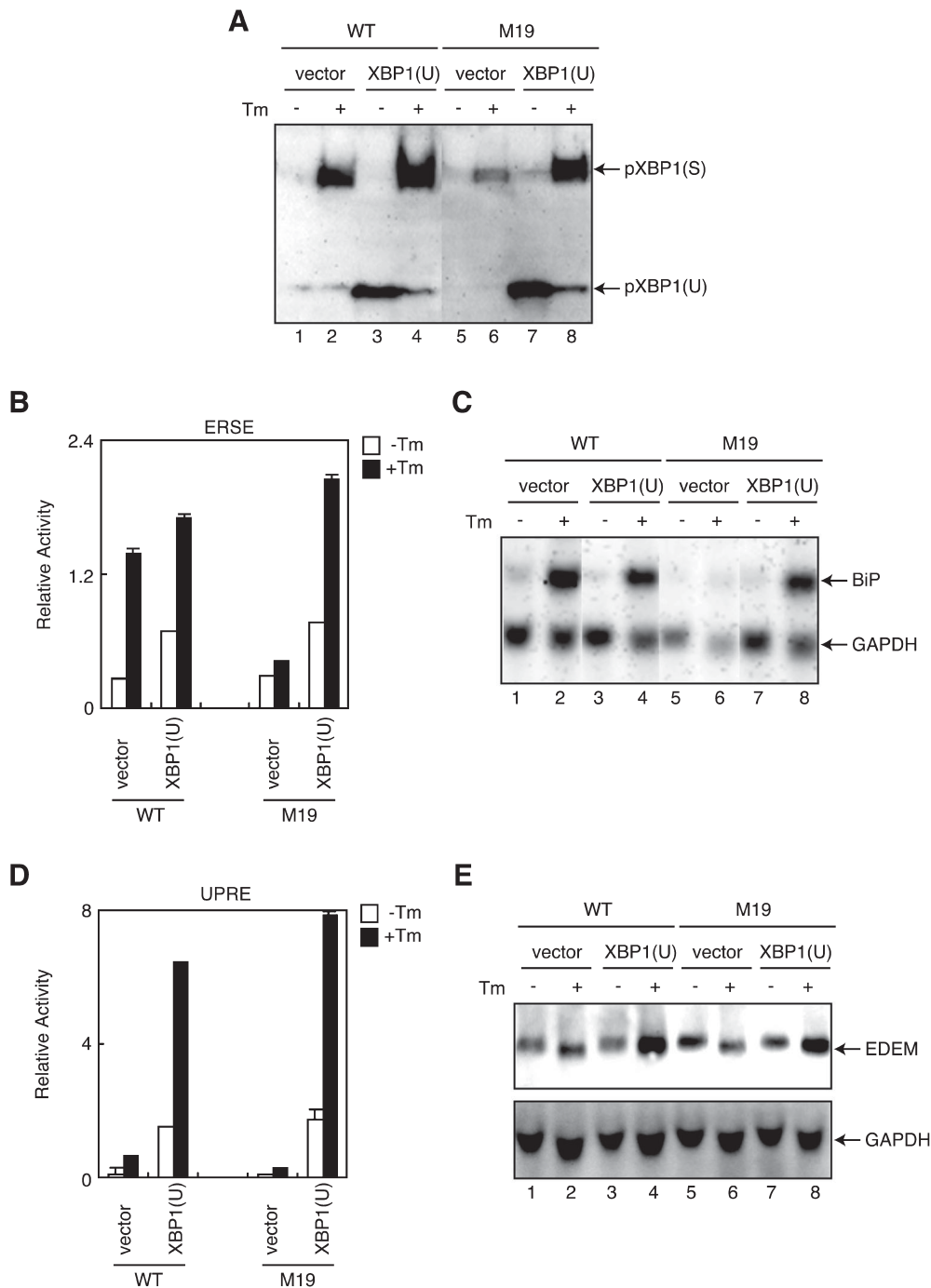


Fig. 2. Effect of overexpression of XBP1 unspliced mRNA on induction of XBP1 protein and XBP1 targets in WT and M19 cells. (A) WT and M19 cells transfected with vector alone (lanes 1, 2, 5 and 6) or pcDNA-XBP1(unspliced) [referred to as XBP1(U)] (lanes 3, 4, 7 and 8) were treated with (+) or without (–) 10 μ g/ml tunicamycin (Tm) for 16 h. Cell lysates were prepared and analyzed by immunoblotting using anti-XBP1 antibody. The migration positions of pXBP1(S) and pXBP1(U) are indicated. (B) WT and M19 cells were transfected with vector alone or pcDNA-XBP1(unspliced) [referred to as XBP1(U)] together with the ERSE reporter gene and reference plasmid as indicated. Luciferase assay was carried out as in Fig. 1C. (C) WT and M19 cells transfected with vector alone (lanes 1, 2, 5 and 6) or pcDNA-XBP1(unspliced) [referred to as XBP1(U)] (lanes 3, 4, 7 and 8) were treated with (+) or without (–) 10 μ g/ml tunicamycin (Tm) for 16 h. Total RNA was isolated and analyzed by Northern blot hybridization using a cDNA probe specific to BiP or GAPDH. (D) WT and M19 cells were transfected with vector alone or pcDNA-XBP1(unspliced) [referred to as XBP1(U)] together with the UPRE reporter gene and reference plasmid as indicated. Luciferase assay was carried out as in Fig. 1C. (E) WT and M19 cells transfected with vector alone (lanes 1, 2, 5 and 6) or pcDNA-XBP1(unspliced) [referred to as XBP1(U)] (lanes 3, 4, 7 and 8) were treated with (+) or without (–) 10 μ g/ml tunicamycin (Tm) for 16 h. Total RNA was isolated and analyzed by Northern blot hybridization using a cDNA probe specific to EDEM or GAPDH.

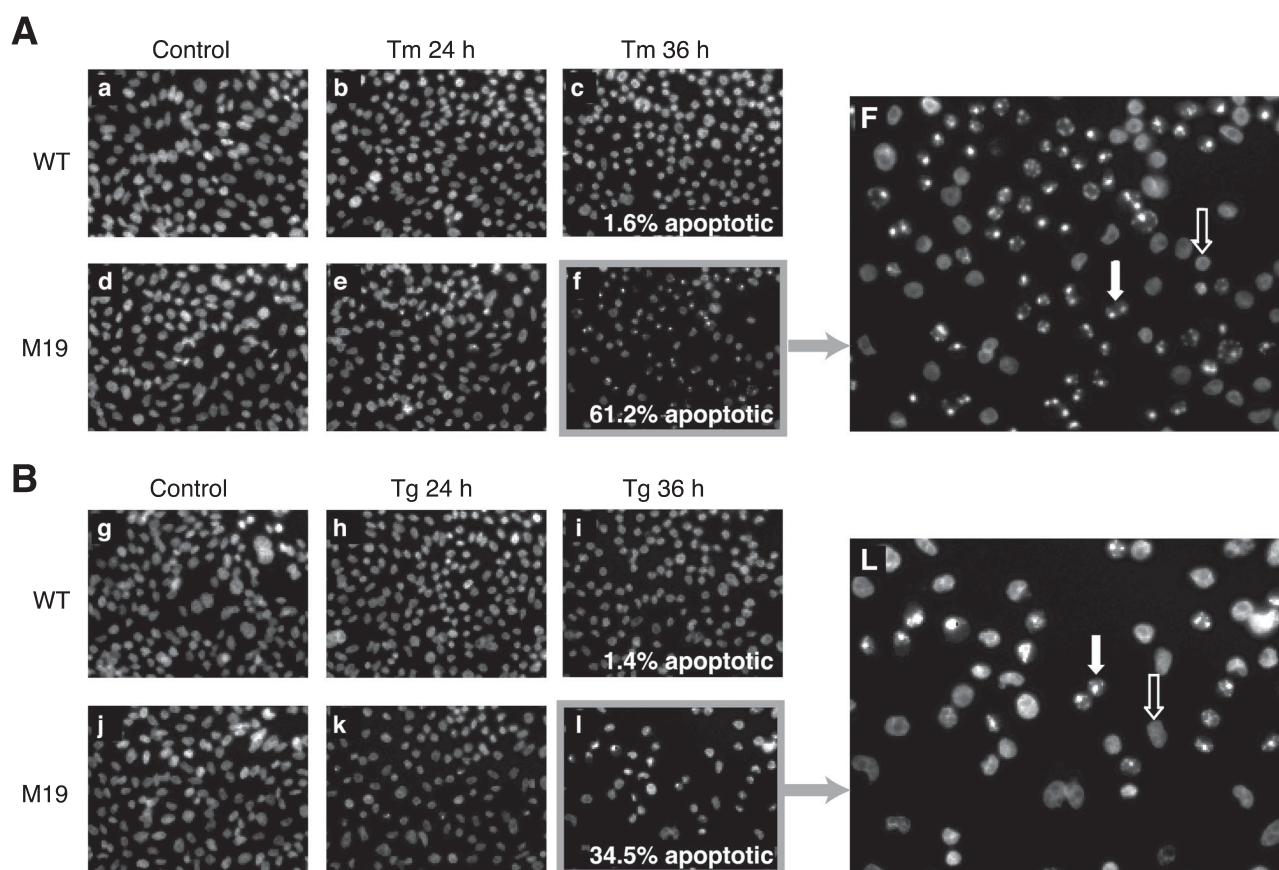


Fig. 3. Comparison of ER stress-induced apoptosis in WT and M19 cells. WT and M19 cells were treated with 10 μ g/ml tunicamycin (Tm) (A) or 1 μ M thapsigargin (Tg) (B) for the indicated periods, and then stained with DAPI. Percentages of apoptotic cells in cells treated for 36 h are indicated in panels c, f, i and l. Panels F and L are magnified versions of panels f and l, respectively. The closed arrow indicates condensed and fragmented nuclei and the open arrow indicates normal nuclei.

(Fig. 2C); this indicated that transcriptional induction of BiP mRNA in response to ER stress depends on three ERSE sequences present in the promoter region to which XBP1 can bind (Yoshida *et al.*, 1998). Similarly, M19 cells were unable to activate UPRE-mediated transcription or induce EDEM mRNA when transfected with vector, but became able to do both as effectively as WT cells when transfected with plasmid to overexpress XBP1 unspliced mRNA (Fig. 2D and 2E). We concluded that Site-2-protease-mediated activation of ATF6 is critical to the expression of pXBP1(S) and the transactivation of its downstream target genes.

Sensitivity of M19 cells to ER stress

We next examined whether M19 cells unable to activate ERSE- and UPRE-mediated transcription are more sensitive to ER stress than WT cells. WT and M19 cells were treated with tunicamycin or thapsigargin and then their nuclei were stained with DAPI after fixation. As shown in Fig. 3, M19 cells exhibited marked sensitivity to ER stress as evidenced

by the high percentage of cells showing condensed and fragmented nuclei, both signs of cells undergoing apoptosis, in 61% and 35% of cells 36 h after the addition of tunicamycin and thapsigargin, respectively. In contrast, less than 2% of WT cells showed condensed and fragmented nuclei under these conditions. We also determined the extent of DNA fragmentation, an early sign of apoptosis, by isolating DNA after the addition of thapsigargin and found that DNA fragmentation occurred much earlier in M19 than WT cells (Fig. 4). This difference in the time course was considered to be significant as M19 cells grew only slightly more slowly than WT cells.

We finally examined whether the introduction of a large amount of XBP1 unspliced mRNA into M19 cells affects their sensitivity to ER stress. M19 cells were transfected with plasmid to overexpress XBP1 unspliced mRNA, fixed, and stained with DAPI and anti-XBP1 antibody. As shown in Fig. 5, 60% of the exogenous XBP1-negative cells exhibited condensed and fragmented nuclei, whereas none of the exogenous XBP1-positive cells did so. We concluded that

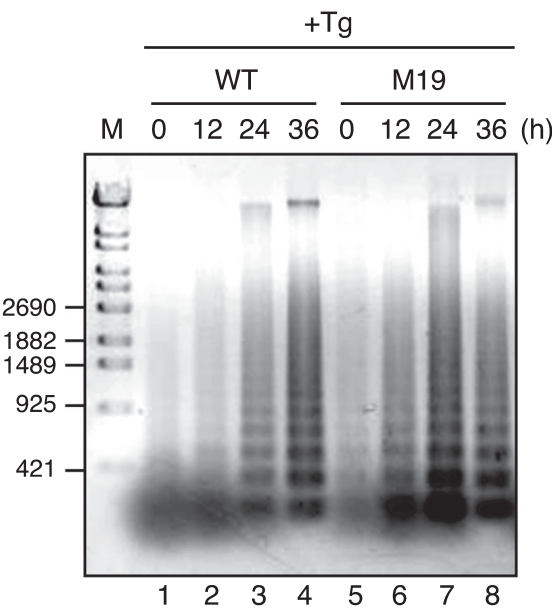


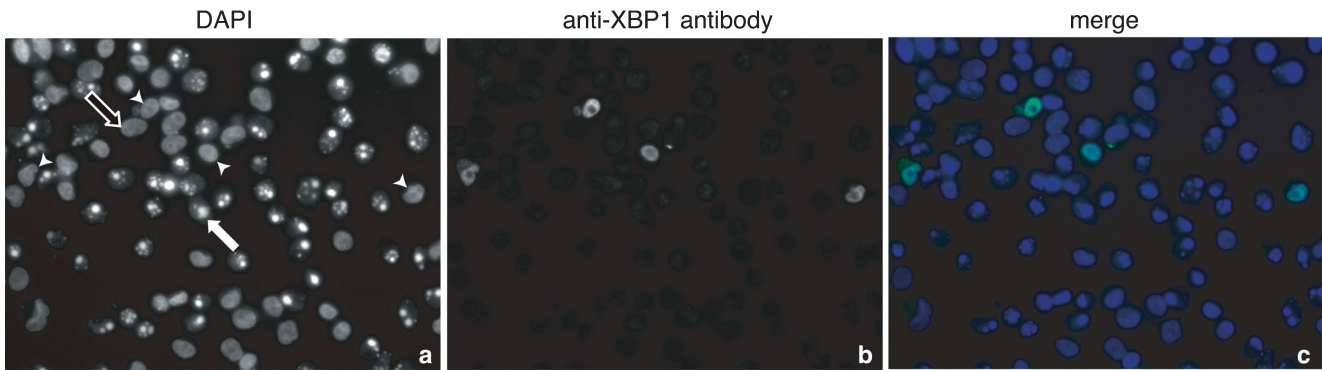
Fig. 4. Comparison of DNA fragmentation in WT and M19 cells. WT and M19 cells were treated with 1 μ M thapsigargin (Tg) for the indicated periods. Chromosomal DNA was extracted, separated on an agarose gel, and then visualized by staining with SYBR Gold. The migration positions of DNA size markers are shown on the left.

the production of pXBP1(S) is critical to the protection of cells from ER stress.

Discussion

Mammalian cells have evolved three types of transmembrane proteins in the ER to counter ER stress: IRE1, PERK, and ATF6. They achieve this through the highly characteristic properties of their cytoplasmic domains, namely, endoribonuclease activity in IRE1, protein kinase activity in PERK, and transcriptional activator activity in ATF6. A comprehensive understanding of the UPR thus requires not only an analysis of the molecular mechanisms of their respective downstream events, but also of the interdependency occurring between them.

The ATF6 pathway is thought to help the production of XBP1, a transcription factor downstream of IRE1 (Yoshida *et al.*, 2001a). Direct examination of this notion must await the construction and characterization of ATF6 knockout mice, which is in progress in our laboratory. In the meantime, the plausibility of this notion can at least be tested using mammalian cells unable to activate ATF6. We showed in a preceding paper (Nadanaka *et al.*, 2006) that, as expected, the M19 cells, a CHO cell mutant deficient in Site-2 protease, are unable to activate ATF6. This cell line therefore afforded us the opportunity to determine the consequences of a lack of ATF6 activation.



Cells not expressing transfected XBP1		Cells expressing transfected XBP1	
apoptotic	survived	apoptotic	survived
477	315	0	39
(60.2%)	(39.8%)	(0%)	(100%)

Fig. 5. Effect of overexpression of XBP1 unspliced mRNA on ER stress-induced apoptosis of M19 cells. M19 cells transfected with pcDNA-XBP1(unspliced) were treated with 1 μ M thapsigargin for 36 h, and then stained with DAPI and anti-XBP1 antibody. The closed arrow indicates condensed and fragmented nuclei and the open arrow indicates normal nuclei. Arrowheads indicate cells expressing transfected XBP1. The number of apoptotic and surviving cells was counted for both cells not expressing transfected XBP1 and those expressing transfected XBP1, and are presented at the bottom.

We found that the induction of XBP1 in response to ER stress in M19 cells was reduced at the level of both mRNA and protein (Fig. 1A and 1B), but that overexpression of XBP1 unspliced mRNA in these cells restored their ability to induce XBP1 protein (Fig. 2A). It should be noted that, consistent with previous results (Lee *et al.*, 2002), the degree of reduction in the induction of XBP1 mRNA was much milder than that in the induction of BiP mRNA (see Fig. 1 of our preceding paper), notwithstanding that the promoters of these two genes carry functional ERSE to which ATF6 binds (Yoshida *et al.*, 2000). This suggests the involvement of a third pathway, the PERK pathway, in the induction of XBP1 mRNA but not in that of BiP mRNA. Indeed, it was previously reported that induction of XBP1 in response to tunicamycin treatment was mitigated at the level of both mRNA and protein in PERK-knockout mouse embryonic fibroblasts as compared with wild-type cells (Calfon *et al.*, 2002). The XBP1 promoter should be re-examined for the presence of a binding site for ATF4, a transcription factor downstream of PERK (Harding *et al.*, 2000a). These results indicate that the full functionality of the IRE1 pathway relies on the other two pathways in the sense that XBP1 mRNA must be induced by them to produce a sufficient amount of active XBP1 to activate transcription. We consider that, owing to this interdependence, the cell can execute a time-dependent phase shift from the refolding-only phase to the refolding plus degradation phase (Yoshida *et al.*, 2001a). While XBP1 mRNA is induced by the PERK and ATF6 pathways in response to ER stress together with the ER chaperone mRNAs, the targets of the ATF6 pathway, PERK-mediated translational control initially helps the pre-existing ER chaperones to deal with the unfolded proteins accumulated in the ER by blocking new protein synthesis. The ER chaperones translated from the induced mRNAs then attempt to refold the unfolded proteins accumulated in the ER. During this refolding-only phase, induced XBP1 mRNA is spliced by activated IRE1 and translated to produce pXBP1(S), leading to the induction of the mRNAs encoding the ER chaperones as well as the ERAD components. Subsequently, the ER chaperones and the ERAD components translated from the induced mRNAs try to refold and degrade, respectively, the unfolded proteins accumulated in the ER. If XBP1 mRNA were constitutively expressed at a high level, IRE1-mediated splicing would produce pXBP1(S) almost as rapidly as the active form of ATF6 is produced after ER stress. In this case, the ER chaperones and the ERAD components are delivered to the ER almost at the same time, ending up with competition for the unfolded proteins, which is an unsophisticated way of coping with ER stress. Further, if XBP1 mRNA were constitutively expressed at a high level, pXBP1(U) would also be constitutively expressed at a high level, which would block transcriptional control during the UPR because pXBP1(U) is a negative regulator of pXBP1(S) (Yoshida *et al.*, 2006). For these reasons we

conjectured that XBP1 mRNA in unstressed cells must be maintained at a low level.

Defective induction of the active form of XBP1 clearly affected downstream events. M19 cells were unable to activate UPRE-mediated transcription and induce EDEM mRNA (Fig. 1C and 1D, respectively). Interestingly, M19 cells were much more sensitive to ER stress than WT cells, as evidenced by their much higher percentages of apoptotic cells (Fig. 3) and by the much earlier fragmentation of DNA (Fig. 4) in M19 than WT cells. Importantly, overexpression of XBP1 unspliced mRNA in M19 cells restored their ability to activate both ERSE- and UPRE-mediated transcription as well as to induce BiP and EDEM mRNA (Fig. 2), and rendered the cells resistant to ER stress (Fig. 5). It was previously shown using PERK knockout cells that PERK-mediated translational control during the UPR is essential for cell survival under ER stress (Harding *et al.*, 2000b). Here, we used M19 cells to show that transcriptional control during the UPR also confers cells resistance to ER stress. We concluded that regulated intramembrane proteolysis-mediated activation of ATF6 is critical to the production of pXBP(S), the subsequent induction of ER chaperones and ERAD components, and the protection of cells from ER stress.

Acknowledgements. We are grateful to Dr. T.Y. Chang (Dartmouth College, Hanover, NH) for providing the M19 cells. We thank Ms. Kaoru Miyagawa for technical and secretarial assistance. This work was supported in part by grants from the Ministry of Education, Culture, Sports, Science and Technology of Japan (17370061, 17026022, and 18050013 to H. Y. and 14037233 and 15GS0310 to K. M.).

References

- Calfon, M., Zeng, H., Urano, F., Till, J.H., Hubbard, S.R., Harding, H.P., Clark, S.G., and Ron, D. 2002. IRE1 couples endoplasmic reticulum load to secretory capacity by processing the *XBP-1* mRNA. *Nature*, **415**: 92–96.
- Gething, M.J. and Sambrook, J. 1992. Protein folding in the cell. *Nature*, **355**: 33–45.
- Harding, H.P., Calfon, M., Urano, F., Novoa, I., and Ron, D. 2002. Transcriptional and translational control in the mammalian unfolded protein response. *Annu. Rev. Cell Dev. Biol.*, **18**: 575–599.
- Harding, H.P., Novoa, I.I., Zhang, Y., Zeng, H., Wek, R., Schapira, M., and Ron, D. 2000a. Regulated translation initiation controls stress-induced gene expression in mammalian cells. *Mol. Cell*, **6**: 1099–1108.
- Harding, H.P., Zhang, Y., Bertolotti, A., Zeng, H., and Ron, D. 2000b. *Perk* is essential for translational regulation and cell survival during the unfolded protein response. *Mol. Cell*, **5**: 897–904.
- Hasan, M.T., Chang, C.C., and Chang, T.Y. 1994. Somatic cell genetic and biochemical characterization of cell lines resulting from human genomic DNA transfections of Chinese hamster ovary cell mutants defective in sterol-dependent activation of sterol synthesis and LDL receptor expression. *Somat. Cell Mol. Genet.*, **20**: 183–194.
- Haze, K., Okada, T., Yoshida, H., Yanagi, H., Yura, T., Negishi, M., and Mori, K. 2001. Identification of the G13 (cAMP-response-element-binding protein-related protein) gene product related to activating transcription factor 6 as a transcriptional activator of the mammalian unfolded protein response. *Biochem. J.*, **355**: 19–28.
- Haze, K., Yoshida, H., Yanagi, H., Yura, T., and Mori, K. 1999. Mamma-

- lian transcription factor ATF6 is synthesized as a transmembrane protein and activated by proteolysis in response to endoplasmic reticulum stress. *Mol. Biol. Cell*, **10**: 3787–3799.
- Helenius, A., Marquardt, T., and Braakman, I. 1992. The endoplasmic reticulum as a protein folding compartment. *Trends Cell Biol.*, **2**: 227–231.
- Kaneko, M., Ishiguro, M., Niinuma, Y., Uesugi, M., and Nomura, Y. 2002. Human HRD1 protects against ER stress-induced apoptosis through ER-associated degradation. *FEBS Lett.*, **532**: 147–152.
- Kaufman, R.J. 1999. Stress signaling from the lumen of the endoplasmic reticulum: coordination of gene transcriptional and translational controls. *Genes Dev.*, **13**: 1211–1233.
- Kopito, R.R. 1997. ER quality control: the cytoplasmic connection. *Cell*, **88**: 427–430.
- Lee, K., Tirasophon, W., Shen, X., Michalak, M., Prywes, R., Okada, T., Yoshida, H., Mori, K., and Kaufman, R.J. 2002. IRE1-mediated unconventional mRNA splicing and S2P-mediated ATF6 cleavage merge to regulate XBP1 in signaling the unfolded protein response. *Genes Dev.*, **16**: 452–466.
- Lilley, B.N. and Ploegh, H.L. 2005. Multiprotein complexes that link dislocation, ubiquitination, and extraction of misfolded proteins from the endoplasmic reticulum membrane. *Proc. Natl. Acad. Sci. USA*, **102**: 14296–14301.
- Mori, K. 2000. Tripartite management of unfolded proteins in the endoplasmic reticulum. *Cell*, **101**: 451–454.
- Mori, K. 2003. Frame switch splicing and regulated intramembrane proteolysis: key words to understand the unfolded protein response. *Traffic*, **4**: 519–528.
- Nadanaka, S., Yoshida, H., Sato, R., and Mori, K. 2006. Analysis of ATF6 activation in site-2 protease-deficient Chinese hamster ovary cells. *Cell Struct. Funct.*, **31**: 109–116.
- Oda, Y., Okada, T., Yoshida, H., Kaufman, R.J., Nagata, K., and Mori, K. 2006. Derlin-2 and Derlin-3 are regulated by the mammalian unfolded protein response and are required for ER-associated degradation. *J. Cell Biol.*, **172**: 383–393.
- Okada, T., Haze, K., Nadanaka, S., Yoshida, H., Seidah, N.G., Hirano, Y., Sato, R., Negishi, M., and Mori, K. 2003. A serine protease inhibitor prevents endoplasmic reticulum stress-induced cleavage but not transport of the membrane-bound transcription factor ATF6. *J. Biol. Chem.*, **278**: 31024–31032.
- Okada, T., Yoshida, H., Akazawa, R., Negishi, M., and Mori, K. 2002. Distinct roles of activating transcription factor 6 (ATF6) and double-stranded RNA-activated protein kinase-like endoplasmic reticulum kinase (PERK) in transcription during the mammalian unfolded protein response. *Biochem. J.*, **366**: 585–594.
- Olivari, S., Galli, C., Alanen, H., Ruddock, L., and Molinari, M. 2005. A novel stress-induced EDEM variant regulating endoplasmic reticulum-associated glycoprotein degradation. *J. Biol. Chem.*, **280**: 2424–2428.
- Patil, C. and Walter, P. 2001. Intracellular signaling from the endoplasmic reticulum to the nucleus: the unfolded protein response in yeast and mammals. *Curr. Opin. Cell Biol.*, **13**: 349–356.
- Rawson, R.B., Zelenski, N.G., Nijhawan, D., Ye, J., Sakai, J., Hasan, M.T., Chang, T.Y., Brown, M.S., and Goldstein, J.L. 1997. Complementation cloning of S2P, a gene encoding a putative metalloprotease required for intramembrane cleavage of SREBPs. *Mol. Cell*, **1**: 47–57.
- Sambrook, J., Fritsch, E.F., and Maniatis, T. 1989. Molecular Cloning: A Laboratory Manual. Cold Spring Harbor Laboratory Press, Cold Spring Harbor, New York.
- Schroder, M. and Kaufman, R.J. 2005. The mammalian unfolded protein response. *Annu. Rev. Biochem.*, **74**: 739–789.
- Shen, J., Chen, X., Hendershot, L., and Prywes, R. 2002. ER stress regulation of ATF6 localization by dissociation of BiP/GRP78 binding and unmasking of Golgi localization signals. *Dev. Cell*, **3**: 99–111.
- Tsai, B., Ye, Y., and Rapoport, T.A. 2002. Retro-translocation of proteins from the endoplasmic reticulum into the cytosol. *Nat. Rev. Mol. Cell Biol.*, **3**: 246–255.
- Wang, Y., Shen, J., Arenzana, N., Tirasophon, W., Kaufman, R.J., and Prywes, R. 2000. Activation of ATF6 and an ATF6 DNA Binding Site by the Endoplasmic Reticulum Stress Response. *J. Biol. Chem.*, **275**: 27013–27020.
- Wilhovsky, S., Gardner, R., and Hampton, R. 2000. HRD gene dependence of endoplasmic reticulum-associated degradation. *Mol. Biol. Cell*, **11**: 1697–1708.
- Ye, J., Rawson, R.B., Komuro, R., Chen, X., Dave, U.P., Prywes, R., Brown, M.S., and Goldstein, J.L. 2000. ER stress induces cleavage of membrane-bound ATF6 by the same proteases that process SREBPs. *Mol. Cell*, **6**: 1355–1364.
- Yoshida, H., Haze, K., Yanagi, H., Yura, T., and Mori, K. 1998. Identification of the *cis*-acting endoplasmic reticulum stress response element responsible for transcriptional induction of mammalian glucose-regulated proteins; involvement of basic-leucine zipper transcription factors. *J. Biol. Chem.*, **273**: 33741–33749.
- Yoshida, H., Matsui, T., Hosokawa, N., Kaufman, R.J., Nagata, K., and Mori, K. 2003. A time-dependent phase shift in the mammalian unfolded protein response. *Dev. Cell*, **4**: 265–271.
- Yoshida, H., Matsui, T., Yamamoto, A., Okada, T., and Mori, K. 2001a. XBP1 mRNA is induced by ATF6 and spliced by IRE1 in response to ER stress to produce a highly active transcription factor. *Cell*, **107**: 881–891.
- Yoshida, H., Okada, T., Haze, K., Yanagi, H., Yura, T., and Mori, K. 2000. ATF6 activated by proteolysis directly binds in the presence of NF-Y (CBF) to the *cis*-acting element responsible for the mammalian unfolded protein response. *Mol. Cell Biol.*, **20**: 6755–6767.
- Yoshida, H., Okada, T., Haze, K., Yanagi, H., Yura, T., Negishi, M., and Mori, K. 2001b. Endoplasmic reticulum stress-induced formation of transcription factor complex ERSF including NF-Y (CBF) and activating transcription factors 6 α and 6 β that activates the mammalian unfolded protein response. *Mol. Cell Biol.*, **21**: 1239–1248.
- Yoshida, H., Oku, M., Suzuki, M., and Mori, K. 2006. pXBP1(U) encoded in XBP1 pre-mRNA negatively regulates unfolded protein response activator pXBP1(S) in mammalian ER stress response. *J. Cell Biol.*, **172**: 565–575.

(Received for publication, July 28, 2006 and accepted, October 9, 2006)