

# Scanning Electron Microscope (SEM) Evaluation of Tooth Surface Irradiated by Different Parameters of Erbium: Yttrium Aluminium Garnet (Er:YAG) Laser

Hanieh Nokhbatolfoghahaie, Nasim Chiniforush, Sima Shahabi, Abbas Monzavi

Laser Research Center of Dentistry (LRCD), School of Dentistry, Tehran University of Medical Sciences, Tehran, Iran

## Abstract:

**Introduction:** The aim of this study was to investigate the Scanning Electron Microscope (SEM) analysis of tooth surface irradiated by different parameters of Er:YAG laser.

**Methods:** 15 caries-free extracted human third molars were used in this study. The teeth were put into 5 groups for laser irradiation as follows: Group 1 (power: 2.5 W, Energy: 250 mJ); Group 2(power: 3 W, Energy: 300 mJ); Group 3 (power: 3.5 W, Energy: 350 mJ); Group 4 (power: 4 W, Energy: 400 mJ); Group 5 (power: 4.5 W, Energy: 450 mJ). All samples were prepared by repetition rate of 10 Hz. Then, the samples were prepared for SEM examination.

**Results:** The SEM images showed cleaned ablated surface and exposed dentinal tubules, without production of smear layer.

**Conclusion:** It can be concluded that Er:YAG laser can be an alternative technique for surface treatment and can be considered as safe as the conventional methods, like turbine and bur.

**Keywords:** dentinal tubules; laser; scanning electron microscopy.

---

Please cite this article as follows:

Nokhbatolfoghahaie H, Chiniforush N, Shahabi S, Monzavi A. Scanning Electron Microscope (SEM) Evaluation of Tooth Surface Irradiated by Different Parameters of Erbium: Yttrium Aluminium Garnet(Er:Yag) Laser: J Lasers Med Sci 2012; 3(2):51-5

\*Corresponding Author: Nasim Chiniforush.DDS; School of Dentistry, Tehran University of Medical Sciences, North Amirabad, Tehran, Iran.Tel:+98-2188015017; Email: n-chiniforush@farabi.tums.ac.ir

## Introduction

The main goal in restorative dentistry is to find the best procedure for caries removal to provide conservative treatments (1, 2).

Presence of pain, vibration, and especially application of local anesthesia account for disadvantages of conventional caries removal methods. To eliminate all unfavorable conditions, new technologies, such as administration of laser is recommended (3).

Among different lasers used in dentistry, Erbium lasers are considered as the best option for caries removal and cavity preparation. This family has two wavelengths including Er:YAG laser (2940 nm)

and Erbium, Chromium doped Yttrium Scandium Gallium Garnet (Er-Cr: YSGG) laser (2780 nm)(4).

The mechanism of dental hard tissue ablation by erbium laser is called water-mediated ablation. Laser energy which is absorbed in water causes vaporization of the water segment and hydrated components leading to explosive destruction of inorganic substances which forms hydrokinetic forces that will result in ablation of dental hard tissue (5, 6).

It is still needed to determine the property of surface prepared by laser in order to use appropriate restorative materials best interacted with this surface (7).

The aim of this study was to evaluate the dentin surface prepared by different parameters of Er:YAG laser.

## Methods

15 extracted human impacted third molars were selected for this study. Teeth showed no caries, restoration and fracture. They were washed under tap water and then stored in distilled water containing 0.4% thymol to prevent microbial growth. Then, the teeth were divided into 5 groups as follows:

Group 1: power: 2.5 W, Energy: 250 mJ,

Group 2: power: 3 W, Energy: 300 mJ,

Group 3: power: 3.5 W, Energy: 350 mJ,

Group 4: power: 4 W, Energy: 400 mJ,

Group 5: power: 4.5 W, Energy: 450 mJ.

All samples were prepared by repetition rate of 10 Hz with pulse duration of 450  $\mu$  sec.

The laser was used in non-contact mode with spot size of 1mm with distance of 5 mm above the tooth surface.

For Scanning Electron Microscope (SEM) analysis, samples were fixed in 2.5% Glutaraldehyde for 12 hours (4°C), and then dehydrated in ascending grades of ethanol (25%, 50%, 75%, 90% and 100%). After that, the samples were dried and sputter-coated with gold. Finally, all 4 surfaces were analyzed with a scanning electron microscope at  $\times 500$ ,  $\times 1000$ ,  $\times 5000$  magnification.

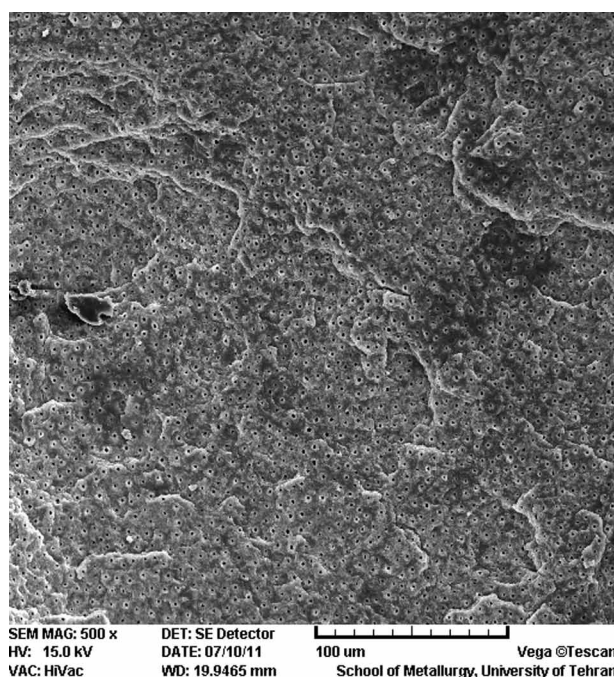
## Results

Under SEM evaluation in the laser group with output power of 2.5, 3 and 3.5 W cleaned ablated surfaced with no smear layer production could be seen. Also, exposed dentinal tubules, scaly and chalky surfaces were shown (Figures 1-6).

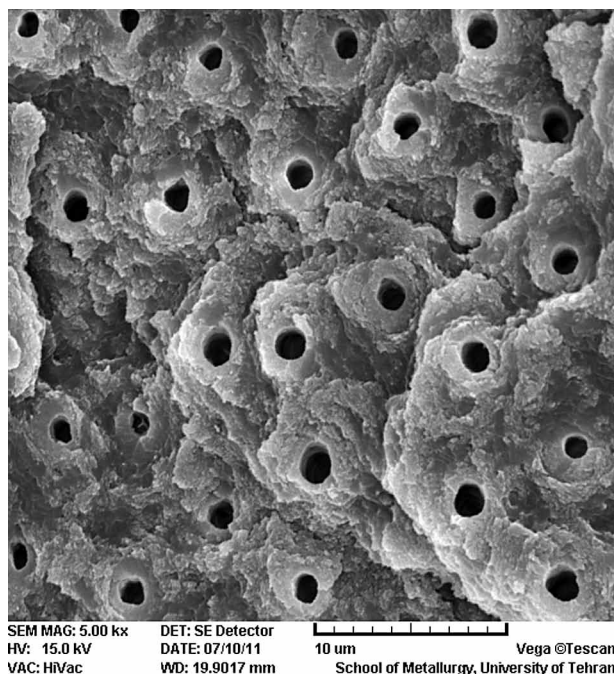
The surface which was prepared by output power of 4 and 4.5W showed some cracks and melting area (Figures 7-9).

## Discussion

In recent years, the application of new technology such as laser has gained special attention for cavity preparation (9). The aim of this study was to compare the surfaces irradiated by Er:YAG laser with different output powers. The result of this



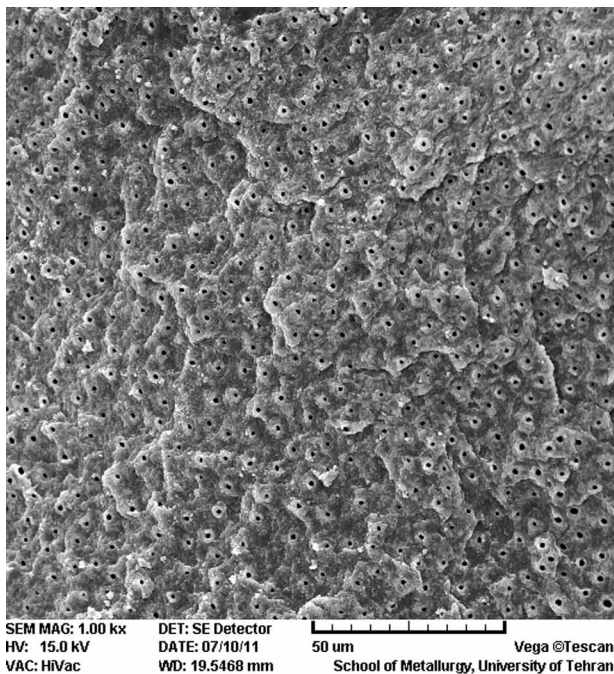
**Figure 1.** Surface treated by Er:YAG with power 2.5 W. Open dentinal tubules, no smear layer, scaly and flake surface (Original magnification  $\times 500$ , bar=100 $\mu$ m)



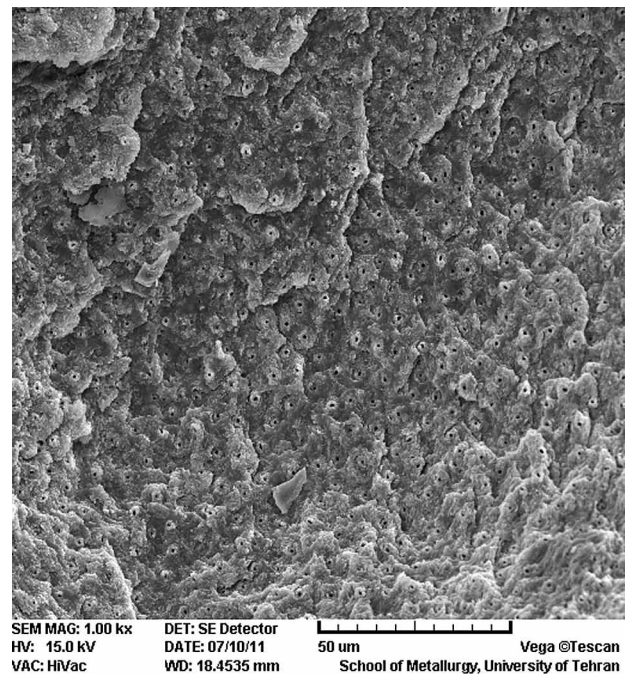
**Figure 2.** Surface treated by Er:YAG with power 2.5 W showing open dentinal tubules (Original magnification  $\times 5000$ , bar=10 $\mu$ m)

study showed that surfaces irradiated by output power below 4 W was free of smear layer with open dentinal tubules, but the surfaces irradiated by output power of 4 and 4.5 W demonstrated

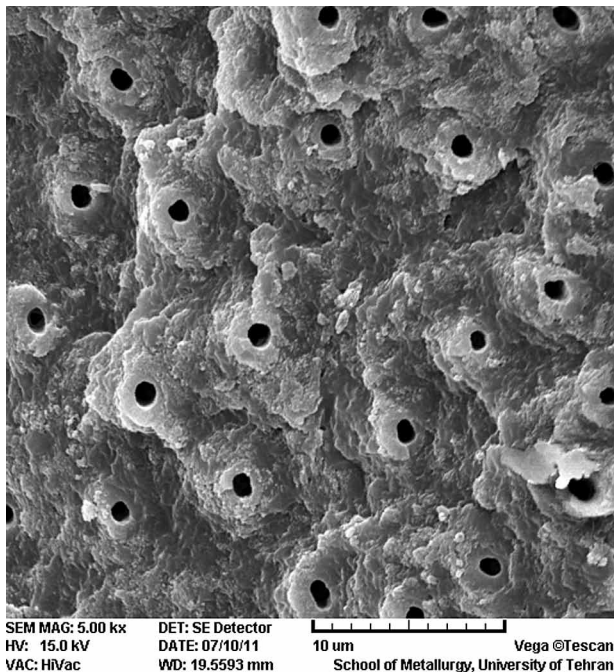




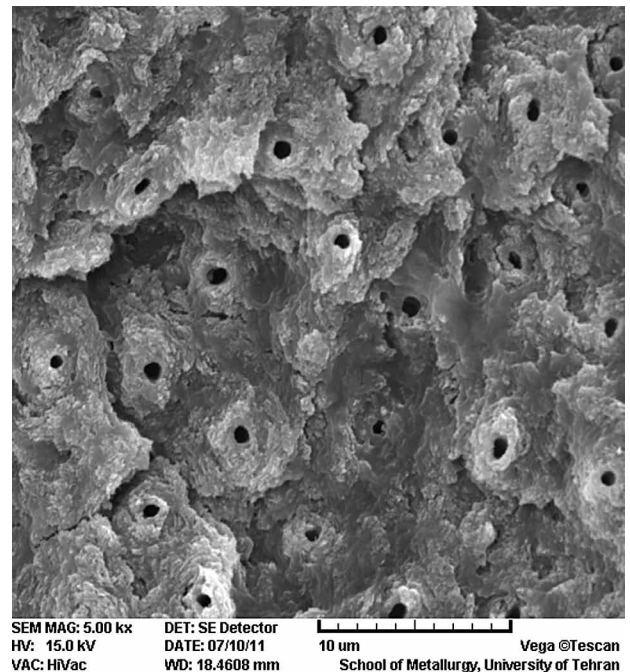
**Figure 3.** Surface treated by Er:YAG with power 3 W. Open dentinal tubules, no smear layer, scaly and flake surface (Original magnification  $\times 1000$ , bar=50 $\mu$ m)



**Figure 5.** Surface treated by Er:YAG with power 3.5 W. open dentinal tubules (Original magnification  $\times 1000$ , bar=50 $\mu$ m)



**Figure 4.** Surface treated by Er:YAG with power 3 W. open dentinal tubules (Original magnification  $\times 5000$ , bar=10 $\mu$ m)



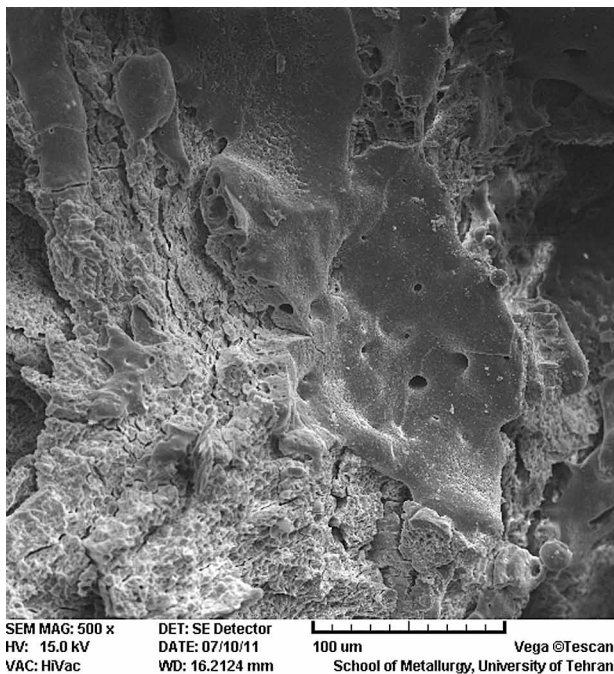
**Figure 6.** Surface treated by Er:YAG with power 3.5 W. protruding area around dentinal tubules. (Original magnification  $\times 5000$ , bar=10 $\mu$ m)

cracks and melting areas.

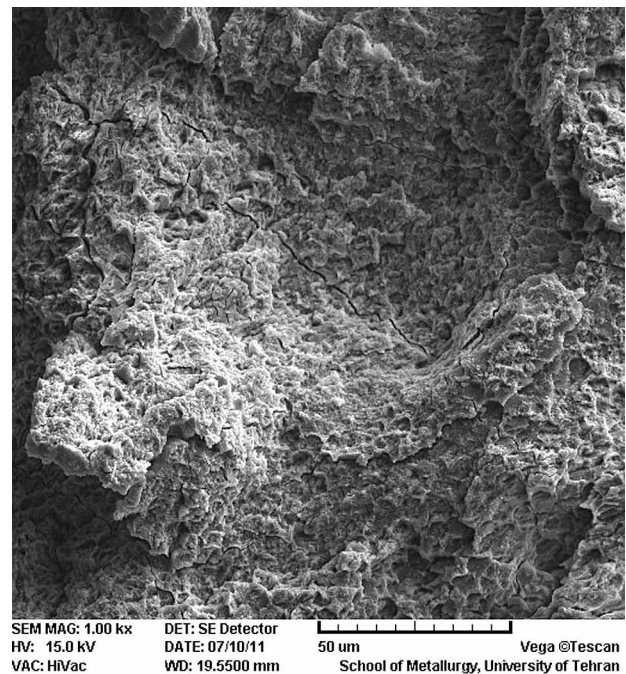
This result was in agreement with Freitas et al who indicated that different parameters of Er:YAG

laser produced irregular and micro-retentive morphological pattern without production of smear layer that makes these surfaces more suitable for

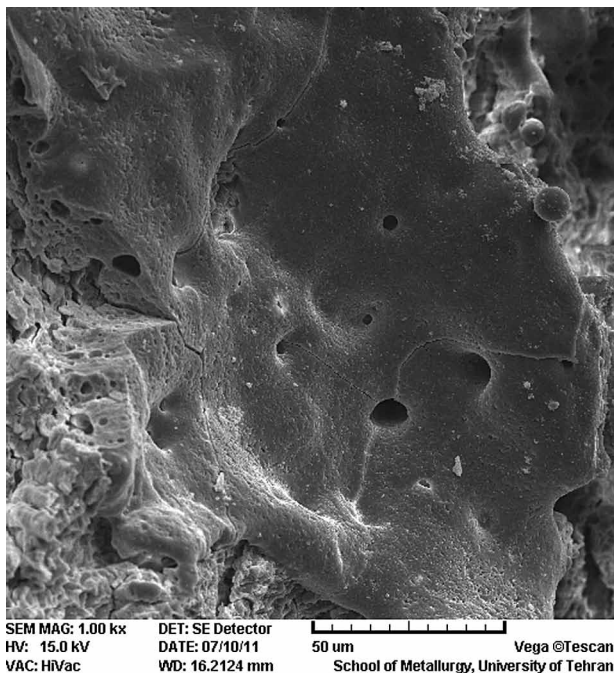




**Figure 7.** Surface treated by Er:YAG with power 4 W. cracks and melting area can be observed (Original magnification  $\times 500$ , bar=100 $\mu$ m)



**Figure 9.** Surface treated by Er:YAG with power 4.5 W. crack can be observed (Original magnification  $\times 1000$ , bar=50 $\mu$ m)



**Figure 8.** Surface treated by Er:YAG with power 4 W. cracks around dentinal tubules can be observed. (Original magnification  $\times 1000$ , bar=50 $\mu$ m)

resin composite restoration(10).

Also, Ceballos et al in analyzing the Er:YAG laser treated surfaces showed open dentinal tubules

which allowed the development of resin tags(11).

The cracks formed by output power above 4 W is related directly to the amount of power used because more cracks and melting areas are produced by application of higher powers (12).

One of the main concerns during the cavity preparation is assessing thermal changes in the pulp. Evaluation of pulpal temperature rise during cavity preparation by Er:YAG laser indicated that the temperature would not rise more than 3° C which is lower than threshold temperature of 5.5° C indicated by Zach and Cohen (13). Since the highest amount of laser energy is used for ablation process, only a small part of energy is used to cause heat in surrounding tissue (14).

While using laser for cavity preparation, it's important to apply the minimum energy to cause the safe ablation of the tissue without unfavorable side effects (15).

The SEM images showed protruding dentinal tubules due to more ablation of inter-tubular dentin compared to peritubular dentin, because inter-tubular dentin is composed of large amount of collagen matrix which mainly contains water which is suitable for Erbium laser absorption (16).

In addition to comfort and reduced noise and vibration, erbium laser can provide other benefits

including reduced hypersensitivity, as well as microbial elimination within the cavity. These advantages make erbium laser popular for cavity preparation (17).

## Conclusion

It can be concluded that Er:YAG laser can be an alternative technique for surface treatment and can be considered as safe as the conventional methods. Also, it's important to select the appropriate parameters for conditioning the surface.

## Reference

1. Anusavice KJ. Efficacy of nonsurgical management of the initial caries lesion. *J Dent Educ* 1997;61:895-905.
2. Gutknecht N, Apel C, Schafer C, Lampert F. Microleakage of composite filling in Er:YSGG laser-prepared class II cavities. *Lasers Surg Med* 2001;28:371-4.
3. Fried D, Ragadio J, Champion A. Residual heat deposition in dental enamel during IR laser ablation at 2.79, 2.94, 9.6 and 10.6  $\mu\text{m}$ . *Lasers Surg Med* 2001;29:221-9.
4. Hibst R. Lasers for caries removal and cavity preparations: State of the art and future directions. *J Oral Laser Applic*, 2002; 2:2-212.
5. Hibst R, Keller U. Experimental studies of the application of Er:YAG laser on dental hard substances: I. Measurement of the ablation rate. *Lasers Surg Med* 1989; 9(4):338-44.
6. Wigdor H, Abt E, Ashrafi S, Walsh JT, Jr. The effect of lasers on dental hard tissues. *J Am Dent Assoc* 1993; 124:65-70.
7. Korkmaz Y, Ozel E, Attar N, Bieer C.O, Firatli E. Microleakage and scanning electron microscopy evaluation of all in one self-etch adhesives and their respective nanocomposite prepared by erbium:yttrium-aluminum-garnet laser and bur. *Lasers Med Sci* 2010;25:493-502.
8. Chinelatti MA, Ramos RP, Chimello DT, Borsatto MC, Pecora JD, Palma-Dibb RG. Influence of the use of Er:YAG laser for cavity preparation and surface treatment in microleakage of resin-modified glass ionomer restorations. *Oper Dent* 2004;29(4):430-6.
9. Roebuck EM, Saunders WP, Whitters CJ. Influence of Erbium:YAG laser energies on the microleakage of class V resin-based composite restorations. *Am J Dent* 2000;13:280-4.
10. Freitas PM, Navarro RS, Barros JA, de Paula Eduardo C.. The use of Er:YAG laser for cavity preparation: An SEM evaluation. *Microsc Res Tech* 2007; 70:803-8
11. Ceballos L, Toledano M, Osorio R, Tay FR, Marshall GW. Bonding to Er:YAG laser-treated dentin. *J Dent Res* 2002; 81: 119-22.
12. Corona SA, Souza-Gabriel AE, Chinelatti MA, Pécora JD, Borsatto MC, Palma-Dibb RG. influence of energy and pulse repetition rate of Er:YAG laser on enamel ablation ability and morphological analysis of the laser irradiated surface. *J Biomed Mater Res A* 2008;84(3):569-75.
13. Zach L, Cohen G. Pulp response to externally applied heat. *Oral Surg Oral Med Oral Pathol* 1965;19:515-30.
14. Schein MT, Bocangel JS, Nogueira GE, Schien PA. SEM evaluation of the interaction pattern between dentin and resin after cavity preparation using Er:YAG laser. *J Dent* 2003; 31:127-35.
15. Ekworapoj P, Sidhu SK, McCabe JF. Effect of different power parameters of Er,Cr:YSGG laser on human dentin. *Lasers Med Sci* 2007;22:175-82.
16. Shahabi S, Chiniforush N, Fekrazad R, Fatemi S.M. Comparison of tensile bond strength of composite to dentine in conventional or lased prepared-cavities(Er,Cr:YSGG). *J Oral Laser Applic* 2010;10:107-10.
17. Carrieri TC, de Freitas PM, Navarro RS, Eduardo Cde P, Mori M. Adhesion of composite luting cement to Er:YAG laser treated dentin. *Lasers Med Sci* 2007; 22:165-70.