

The norepinephrine-sensitive Ca^{2+} -storage site differs from the caffeine-sensitive site in vascular smooth muscle of the rat aorta

Hideo Kanaide, Yoshito Shogakiuchi and Motoomi Nakamura

Research Institute of Angiocardiology and Cardiovascular Clinic, Faculty of Medicine, Kyushu University, 3-1-1 Maidashi, Higashi-ku, Fukuoka 812, Japan

Received 6 February 1987

Using microfluorometry of quin 2, a Ca^{2+} -sensitive dye, we characterized the release and uptake of Ca^{2+} by the norepinephrine-sensitive Ca^{2+} -storage site and the caffeine-sensitive one. The norepinephrine-sensitive Ca^{2+} -storage site was readily depleted in Ca^{2+} -free medium and almost completely replenished by loading with 1.0 mM Ca^{2+} solution for 3 min, whereas the caffeine-sensitive site was scarcely affected. Furthermore, norepinephrine has little effect on the caffeine-sensitive Ca^{2+} -storage site in Ca^{2+} -free medium, and vice versa. We conclude that the location and mechanisms of release and uptake of Ca^{2+} of these two Ca^{2+} -storage sites differ in the case of rat aortic vascular smooth muscle cells in primary culture.

Ca^{2+} store; Norepinephrine; Caffeine; Quin 2; (Vascular smooth muscle cell, Rat aorta)

1. INTRODUCTION

The release of cellular Ca^{2+} plays a major role in contraction of both VSMCs and striated muscles [1-3]. Although NE [4,5] and caffeine [6] will release Ca^{2+} from the intracellular Ca^{2+} -storage sites, the sites sensitive to these two agents have not been clearly identified [7,8]. Using microfluorometry of quin 2, the release and uptake of calcium by the NE-sensitive storage and caffeine-sensitive sites in cultured rat VSMCs were investigated.

Correspondence address: H. Kanaide, Research Institute of Angiocardiology and Cardiovascular Clinic, Faculty of Medicine, Kyushu University, 3-1-1 Maidashi, Higashi-ku, Fukuoka 812, Japan

Abbreviations: $[\text{Ca}^{2+}]_i$, intracellular free calcium concentration; PSS, physiological saline solution; VSMCs, vascular smooth muscle cells; NE, norepinephrine

2. MATERIALS AND METHODS

Quin 2/AM was purchased from Dojindo (Japan). Drugs used were l-norepinephrine hydrochloride (Sigma), caffeine (Sigma) and ionomycin (Calbiochem).

2.1. Cell culture and quin 2 loading of cells

VSMCs were cultured from the rat aortic media as described [9], primary cultures being used for all observations. On days 5-6, just before reaching confluency, the cultured cells on Lux chamber slides were loaded with quin 2 physiologically as the acetoxymethyl ester (quin 2/AM) as in [10,11]. The millimolar composition of the 'normal' PSS (pH 7.4 at 25°C) was: 135 NaCl, 5 KCl, 1 CaCl_2 , 1 MgCl_2 , 5.5 glucose, and 10 Hepes. The composition of Ca^{2+} -free PSS was similar to that of normal PSS, except that it contained 2 mM EGTA instead of 1 mM CaCl_2 .

2.2. Microfluorometry of quin 2

Changes in $[Ca^{2+}]_i$ were estimated by measuring the fluorescence change of the quin 2- Ca^{2+} complex in the cytosol of VSMCs. The fluorescence intensity in a spot ($< 1 \mu m^2$) of the cytosol $3 \mu m$ from the nucleus was recorded using microfluorometry as in [10,11].

3. RESULTS AND DISCUSSION

As shown in fig.1A, marked fluorescence of the quin 2- Ca^{2+} complex was observed almost exclusively in the cytosol. When VSMCs were exposed to Ca^{2+} -free PSS containing 2 mM EGTA, $[Ca^{2+}]_i$ decreased exponentially, reaching a steady-state level within 6 min (fig.1B). This steady-state level was retained for over 60 min. Both NE (10^{-5} M) and caffeine (10^{-2} M) induced a transient $[Ca^{2+}]_i$ elevation in Ca^{2+} -free PSS; there was a

progressive increase in $[Ca^{2+}]_i$, which peaked at 2 or 0.5 min after application of NE or caffeine, respectively. The peak values obtained by application of NE or caffeine after 10 min in Ca^{2+} -free media were dose-dependent. Since both NE and caffeine induced $[Ca^{2+}]_i$ transients in the absence of extracellular Ca^{2+} , the observed $[Ca^{2+}]_i$ elevations were due to the release of Ca^{2+} from the intracellular storage sites. Using the method of Tsien et al. [12], an estimate of $[Ca^{2+}]_i$ was made. The maximum and minimum fluorescence signals were obtained by permeabilizing cells with 10^{-7} M ionomycin in the presence of excess Ca^{2+} (10^{-3} M) or 10 mM EGTA (approx. 10^{-9} M Ca^{2+}), respectively. Using these values, it can be calculated that the $[Ca^{2+}]_i$ of VSMCs in normal PSS, Ca^{2+} -free PSS (2 mM EGTA) for 10 min and the peak value induced by NE (10^{-5} M) in Ca^{2+} -free PSS for 10 min were 105 ± 19 , 48 ± 6 and 403 ± 129 nM,

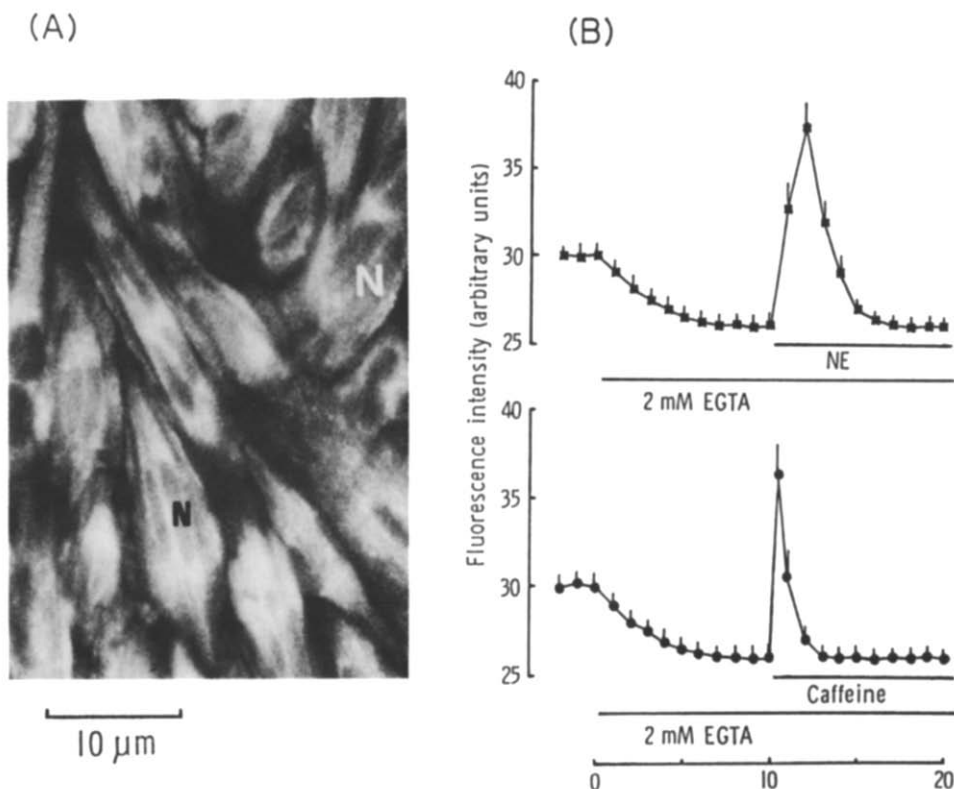


Fig.1. (A) Fluorescence photomicrograph of quin 2-loaded cells 2 min after addition of 10^{-5} M NE in Ca^{2+} -free PSS containing 2 mM EGTA (N, nucleus). (B) Typical time courses of the effects of (■) 10^{-5} M NE (upper), and (●) 10^{-2} M caffeine (lower) on the fluorescence signal in VSMCs in Ca^{2+} -free PSS containing 2 mM EGTA. Data are means \pm SD of 8 cells.

respectively ($n=5$). The resting level of $[Ca^{2+}]_i$ in normal PSS found here is similar to those reported in [13-16].

Fig.2 depicts the effects of the duration of exposure to Ca^{2+} -free medium on the peak levels of the Ca^{2+} transients induced by the first application of NE (10^{-5} M) and caffeine (10^{-2} M) (doses sufficient to exert maximum elevations of $[Ca^{2+}]_i$ [10,17]). After 10 min exposure to Ca^{2+} -free medium, the longer the duration of exposure, the lesser the extent of the NE-induced elevation of $[Ca^{2+}]_i$, while that of caffeine was little affected. The half-times for decay of the peak levels of NE- and caffeine-induced elevations of $[Ca^{2+}]_i$ in Ca^{2+} -free medium were 13 and 190 min, respectively. When VSMCs were incubated with 1.0 mM Ca^{2+} PSS for 3 min, and then incubated again with Ca^{2+} -free media for 1 min prior to the application of NE after 15 min or longer in Ca^{2+} -free media, the extent of peak elevation of $[Ca^{2+}]_i$ by NE was large and independent of the duration of the first exposure to Ca^{2+} -free media. This observation indicates that, although the NE-induced $[Ca^{2+}]_i$ elevation decreases time-dependently, there may be no discernible damage in the Ca^{2+} -release mechanisms

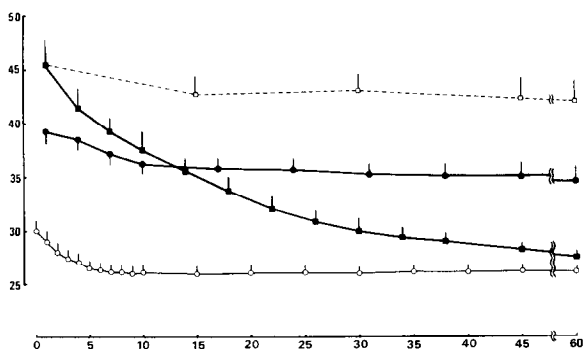


Fig.2. Effects of Ca^{2+} -free medium on peak levels of the fluorescence signal induced by the first application of 10^{-5} M NE (■) and 10^{-2} M caffeine (●). (○) Fluorescence levels of control cells, incubated only in Ca^{2+} -free PSS containing 2 mM EGTA. The NE-induced peak signals recovered to the steady level when Ca^{2+} -depleted cells were loaded with 1.0 mM Ca^{2+} for 3 min, and then incubated again with Ca^{2+} -free media for 1 min prior to application of NE (□---□). Data are means \pm SD of 5 experiments. Ordinate, fluorescence intensity (arbitrary units); abscissa, time (min) in Ca^{2+} -free solution.

mediated by NE in Ca^{2+} -free solution for at least 60 min. The NE-sensitive stored Ca^{2+} is rapidly depleted in Ca^{2+} -free solution and rapidly replenished in 1.0 mM Ca^{2+} PSS.

As shown in fig.3A, when VSMCs were repeatedly exposed to 10^{-5} M NE in Ca^{2+} -free PSS containing 2 mM EGTA for 5 min with an interval of 2 min, the peak level of the fluorescence increase on a second exposure to NE was about 30% of that observed with the first. The fluorescence increase on a third exposure was little, if any. Thus, the NE-sensitive Ca^{2+} -storage site of VSMCs was practically depleted with three applications of 10^{-5} M NE, in Ca^{2+} -free medium. When 10^{-2} M caffeine was subsequently applied to VSMCs in Ca^{2+} -free medium after the third exposure to NE, a transient elevation of $[Ca^{2+}]_i$ occurred, the peak level being neither greater nor smaller than that induced by the same dose of caffeine, for the same

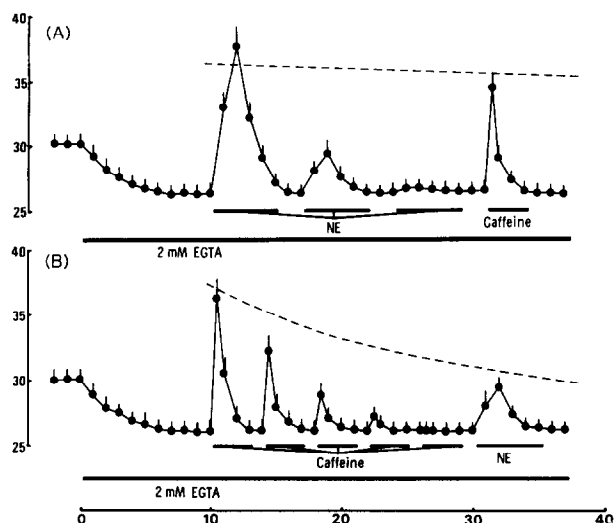


Fig.3. (A) Effect of repetitive application of 10^{-5} M NE on subsequent elevation of cytosolic Ca^{2+} induced by 10^{-2} M caffeine in Ca^{2+} -free PSS containing 2 mM EGTA. Data are means \pm SD of 5 experiments. (B) Effect of repetitive application of 10^{-2} M caffeine on subsequent elevation of cytosolic Ca^{2+} induced by 10^{-5} M NE in Ca^{2+} -free PSS containing 2 mM EGTA. Data are means \pm SD of 5 experiments. (---) Time courses of peak levels of fluorescence induced by the first application of 10^{-2} M caffeine (A) and 10^{-5} M NE (B) in Ca^{2+} -free media; obtained from fig.2. Ordinate, fluorescence intensity (arbitrary units); abscissa, time (min) in Ca^{2+} -free solution.

time of exposure to Ca^{2+} -free medium, without the repetitive application of NE. This observation indicates that the caffeine-sensitive Ca^{2+} -storage site was not affected by prior treatment with NE. Conversely, as shown in fig.3B, when VSMCs were repeatedly exposed to 10^{-2} M caffeine in Ca^{2+} -free PSS containing 2 mM EGTA for 3 min with an interval of 1 min, the peak level of $[\text{Ca}^{2+}]_i$ elevation was reduced gradually with each application, the fifth application producing little or no cellular response. Thus, the caffeine-sensitive Ca^{2+} -storage site was practically depleted after the fifth application of caffeine. When 10^{-5} M NE was subsequently applied after depletion of the caffeine-sensitive Ca^{2+} -storage site, there was an elevation of $[\text{Ca}^{2+}]_i$, the peak level being in good accord with that induced by the same dose of NE for the same duration of exposure to Ca^{2+} -free medium and without the repetitive application of caffeine. These findings indicate that the NE-sensitive Ca^{2+} -storage site differs from the caffeine-sensitive site in VSMCs in primary culture.

The effects of Ca^{2+} loading on the NE- and caffeine-sensitive Ca^{2+} -storage sites in Ca^{2+} -depleted VSMCs are shown in fig.4. When VSMCs were incubated with 1.0 mM Ca^{2+} PSS for 3 min after the depletion of caffeine-sensitive stored Ca^{2+} by a five-step application of caffeine in Ca^{2+} -free PSS, the $[\text{Ca}^{2+}]_i$ transient induced by subsequent application of caffeine was practically negligible (fig.4A). In contrast, the NE-sensitive Ca^{2+} -storage site was almost completely replenished in such cases (fig.4B). Thus, the NE-sensitive Ca^{2+} -storage site once depleted is readily replenished by loading with 1.0 mM Ca^{2+} PSS for 3 min, whereas the caffeine-sensitive Ca^{2+} -storage site is barely affected. The findings that Ca^{2+} in the NE-sensitive storage site is readily depleted and replenished indicate that the site is located in close proximity to the cell membrane. Daniel and co-workers [7,18] demonstrated that Ca^{2+} binds at the cell membrane of the rabbit aortic smooth muscle, and Brockerhoff [19] proposed that cells store calcium in the hydrogen belt of their membranes, on the cytoplasmic side, with the Ca^{2+} captive in cages formed by the phosphate and carbonyl oxygens of two acidic phospholipid molecules, e.g. phosphatidylinositol and phosphatidylserine. As there are differences in the rates of Ca^{2+} depletion and replenishment between the two Ca^{2+} -storage

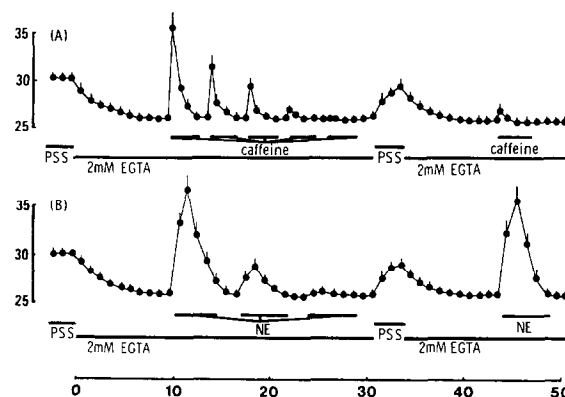


Fig.4. Effects of Ca^{2+} loading on the NE- and caffeine-sensitive Ca^{2+} -storage sites of Ca^{2+} -depleted cells in Ca^{2+} -free medium. (A) Effect of Ca^{2+} loading with 1.0 mM Ca^{2+} PSS for 3 min on the caffeine-induced Ca^{2+} transient after depletion of the caffeine-sensitive Ca^{2+} -storage site by five applications of caffeine in Ca^{2+} -free PSS. (B) Effect of Ca^{2+} loading with 1.0 mM Ca^{2+} PSS for 3 min on the NE-induced Ca^{2+} transient after depletion of the NE-sensitive Ca^{2+} -storage site by three applications of NE in Ca^{2+} -free PSS. Data are means \pm SD of 5 experiments. Ordinate, fluorescence intensity (arbitrary units); abscissa, time sequence (min) in Ca^{2+} -free solution and 1 mM Ca^{2+} -PSS solution.

sites and NE has little effect on the caffeine-sensitive Ca^{2+} -storage site in Ca^{2+} -free medium, and vice versa, we tentatively conclude that the location and mechanisms of release and uptake of Ca^{2+} of these two Ca^{2+} -storage sites in cultured VSMCs differ; at least, the NE-sensitive Ca^{2+} -storage site does not overlap with the caffeine-sensitive site.

ACKNOWLEDGEMENTS

We thank M. Hasegawa for assistance with experiments, N. Hayashi and Y. Matsukuma for secretarial services, and M. Ohara for comments on the manuscript. This work was supported in part by Grants-in-Aid for Scientific Research (no. 61570422) and for Special Project Research (no. 61232016) from the Ministry Education, Science and Culture, Japan, a Research Grant for Cardiovascular Disease (60 C-1 and 61 A-1) from the Ministry of Health and Welfare, Japan, a Research Grant from the Kanoe Foundation of Research for New Medicine (1985), and a Research Grant from the Calcium Signal Workshop on Cardiovascular Systems.

REFERENCES

- [1] Carafoli, E. (1982) *Adv. Exp. Med. Biol.* 151, 461-472.
- [2] Rasmussen, H. and Barrett, P.Q. (1984) *Physiol. Rev.* 64, 938-984.
- [3] Somlyo, A.P. (1985) *Circ. Res.* 57, 497-507.
- [4] Bond, M., Kitazawa, T., Somlyo, A.P. and Somlyo, A.V. (1984) *J. Physiol.* 355, 677-695.
- [5] Kowarski, D., Shuman, H., Somlyo, A.P. and Somlyo, A.V. (1985) *J. Physiol.* 366, 153-175.
- [6] Endo, M., Yagi, S. and Iino, M. (1982) *Fed. Proc.* 41, 2245-2250.
- [7] Daniel, E.E. (1984) *J. Cardiovasc. Pharmacol.* 6, S622-S629.
- [8] Leijten, P., Saida, K. and Van Breemen, C. (1985) *J. Cardiovasc. Pharmacol.* 7 (suppl. 6), S38-S42.
- [9] Yamamoto, H., Kanaide, H. and Nakamura, M. (1983) *Br. J. Exp. Pathol.* 64, 156-165.
- [10] Kobayashi, S., Kanaide, H. and Nakamura, M. (1985) *Biochem. Biophys. Res. Commun.* 129, 877-884.
- [11] Kobayashi, S., Kanaide, H. and Nakamura, M. (1985) *Science* 229, 553-556.
- [12] Tsien, R.Y., Pozzan, T. and Rink, T.J. (1982) *J. Cell Biol.* 94, 325-334.
- [13] Williams, D.A., Fogarty, K.E., Tsien, R.Y. and Fay, F.S. (1985) *Nature* 318, 558-561.
- [14] Capponi, A.M., Lew, P.D. and Vallotton, M.B. (1985) *J. Biol. Chem.* 260, 7836-7842.
- [15] Sumimoto, K. and Kuriyama, H. (1986) *Pflügers Arch. Eur. J. Physiol.* 406, 173-180.
- [16] Williams, D.A. and Fay, F.S. (1986) *Am. J. Physiol.* 250, C779-C791.
- [17] Shogakiuchi, Y., Kanaide, H., Kobayashi, S., Nishimura, J. and Nakamura, M. (1986) *Biochem. Biophys. Res. Commun.* 135, 9-15.
- [18] Grover, A.K., Crankshaw, J., Triggie, C.R. and Daniel, E.E. (1983) *Life Sci.* 32, 1553-1558.
- [19] Brockerhoff, H. (1986) *Chem. Phys. Lipids* 39, 83-92.