

# A new sperm agglutinin factor from marine snail *Telescopium telescopium*: An evaluation with goat (*Capra hircus*) cauda epididymal spermatozoa

Samata Maji M.V.Sc., Uttam Datta Ph.D., Manik Lal Hembram M.V.Sc.

Department of Veterinary Gynaecology and Obstetrics, Faculty of Veterinary and Animal Sciences, West Bengal University of Animal and Fishery Sciences, West Bengal, India.

Received: 20 Jun 2009; accepted: 19 December 2009

## Abstract

**Background:** Lectins, the multivalent carbohydrate binding proteins are also employed to ascertain differentiation and characterization of the specific cell surface carbohydrate ligands/ receptors of different cell types including spermatozoa and posses novel biomedical importance.

**Objective:** SF<sub>50</sub>, the sialic acid specific lectin, was employed on goat cauda epididymal spermatozoa to investigate its effect(s) on the physiology of sperm cells if any.

**Materials and Methods:** A protein factor, SF<sub>50</sub> was obtained from spermatheca/ ovotestis gland of marine snail *Telescopium telescopium* by precipitation with 50% ammonium sulfate. Different concentrations of SF<sub>50</sub> and Bovine serum albumin (BSA) as control were added with washed goat cauda epididymal spermatozoa and observed immediately and after 20 s and 60 s of incubation.

**Results:** SF<sub>50</sub> treated sperm cells exhibited head-to-head type agglutination. The degree of agglutination varied ( $p<0.001$ ) with the concentration of SF<sub>50</sub> used. Agglutinability of spermatozoa were significantly higher ( $p<0.001$ ) with higher concentration of SF<sub>50</sub> as well as incubation period had significant influence ( $p<0.001$ ) on the number of agglutinated spermatozoa. Agglutination and immobilization of spermatozoa occurred instantly with higher doses of SF<sub>50</sub> that of lower doses. Spermatozoan immobilization was irreversible.

**Conclusion:** Experiment demonstrates sperm surface components altered when the cells were incubated with SF<sub>50</sub> and their plasma membrane is heterogeneous in nature. Therefore, it could be that, SF<sub>50</sub> binding protein(s) plausibly remain in the acrosomal region. This observation may prove useful to correlate changes in the sperm surface during their various biological events, moreover, SF<sub>50</sub> as sperm surface biomarker and as local barrier contraceptive could be thought off.

**Key words:** Agglutination, Lectin, Snail, Sperm.

## Introduction

Mammalian spermatozoa emerging from the testis, display a highly organized and differentiated cell surface with membrane components arranged

in discrete domains (1,2). The distinct cell surface topography of glycoprotein and other membrane components modify during passage through the male reproductive tract, plausibly play a crucial role in the physiology of spermatozoa during epididymal maturation (3-5), capacitation and acrosome reaction (6,7) as well as in sperm-egg interaction (8-10). For identification and understanding of the role of sperm surface components involve in maturation and fertilization, lectins (agglutinins) have been used to characterize such components (11- 13). Lectins, are multivalent

## Corresponding Author:

Uttam Datta , Department of Veterinary Gynaecology and Obstetrics, Faculty of Veterinary and Animal Sciences, West Bengal University of Animal and Fishery Sciences, 37 and 68, Kshudiram Bose Sarani, Belgachia, Kolkata-700037 West Bengal, India.

**E-mail:** uttamdt@yahoo.com

high molecular weight glycoproteins with different sugar binding specificity, are able to agglutinate different cell types and bind specific carbohydrate moieties on the cell surface membranes particularly in terminal positions (14, 15). Lectins have been used to study/ characterize the carbohydrate-containing cell surface receptors in numerous biological systems and can be used to analyze variations in the distribution and density of exposed saccharides of the sperm plasmamembrane (SPM) during physiologic maturation and after ejaculation (16, 17).

Lectin-binding has also been studied on spermatozoa of different species since glycoconjugates are believed to be functionally important in sperm-egg recognition and interaction. Hence, lectin-binding may therefore, bear some potential roles for biological in-vitro tests to predict functional activity of spermatozoa (18, 19). Importantly, agglutination assay may prove useful as a direct test for the occurrence of capacitation which could be used to develop/ compare surface properties of uncapacitated and capacitated mammalian sperm. Lectins have been isolated from variety of plants, animals and microbial sources (14, 20, 21). Invertebrates are also rich sources of different types of agglutinins (22) and are found in their haemolymph, albumin gland and in sex organs also. Agglutinins are glycoprotein in nature and play a fundamental role in the innate immune responses in invertebrates (14). Although various activities have been attributed to invertebrate lectins, however, reports on the activities / characters of agglutinin from *Telescopium telescopium* on the sperm cells are very scarce. In this study, a simple assay was developed to quantitate, SF<sub>50</sub>, a sialic acid specific lectin (23) on washed goat cauda epididymal spermatozoa, and at timed intervals during incubation, sperm samples were assessed for pattern and degree of SF<sub>50</sub> induced agglutination, immobilization as well as surface alteration if any, in comparison with BSA treated spermatozoa as control.

## Materials and methods

### Collection of the snail and preparation of SF<sub>50</sub>

The cone snail *Telescopium telescopium* under phylum-mollusca, class-gastropoda, were collected from the estuaries of inter tidal zone during low tide at the Bay of Bengal near Sagar Island (22° 19' N; 80° 03' E) in West Bengal, India. 50 adult snails were collected randomly before the rainy season. The snails were kept in the laboratory at

28°C to 30°C in a tub containing sea water. Before the experiment, snails were allowed to empty their guts for a period of three days. The snails were kept under running tap water to clean the mud from outer surface of the shell and blotted to remove water prior to the experiment. Before being removed from their shells, snails were narcotized in isotonic (7.2%) magnesium chloride solution in a tray for 30 min. the shells were broken very carefully with a hammer. The whole body of each snail was removed and washed thoroughly with normal saline solution and blotted. Spermatheca gland from each snail was dissected out from the body of the snail. The dissected glands were minced carefully in a Petri dish, homogenized at 4°C with 4 volume of 0.15 M phosphate buffer saline (PBS; 8.76 g/L NaCl, 0.3 g/L NaH<sub>2</sub>PO<sub>4</sub>, 1.07 g/L Na<sub>2</sub>HPO<sub>4</sub>), PH 7.2 in a motor driven Teflon Dounce homogenizer. The grinded tissue fragmented further by sonicator (6 μ amplitude) at 0°C with a Brownwill Biosonic IV, VWR sonicator set at 100% output for four 15 s bursts at ≥30 s interval for a total period of 1 hour. The sonicated material was spun in a Beckman SW28 swinging bucket rotor at 15,000g for 30 min at 4°C to discard the cellular debris. Cytosol fraction was aspirated carefully from the centrifuge tubes and ultracentrifuged again at 90,000g for 1 h in a Beckman L265B ultracentrifuge using a fixed angle rotor type 65 at 4°C. The tinged bluish coloured clear cytosol fraction was aspirated carefully by Pasteur pipette and kept in a sterilized glass beaker.

The cytosol fraction was passed through membrane filter (150μ pore size) and transferred in a beaker with magnetic stirrer. Ammonium sulfate solution, 50%, was added drop by drop and allowed to stir overnight at 4°C. The solution was centrifuged again at 10,000 g for 30 min at 4°C. Precipitated protein pellet was collected carefully and dissolved in 2 ml of PBS. Dissolved protein solution was transferred into a dialysis bag (450 Å poracity) and dialyzed against 6 changes of PBS for overnight at 4°C. Dialyzed solution then transferred into sterile glass vials, lyophilized and kept at -20°C till experimentation. The lyophilized fraction was named SF<sub>50</sub> (24).

### Estimation of total protein and PH of SF<sub>50</sub>

Total protein concentration of SF<sub>50</sub> (1 mg/ ml in distilled water) was estimated (25) against standard solutions of BSA (globulin free). The readings were recorded by a spectrophotometer at 280 nm. The PH value of SF<sub>50</sub> solution was estimated by a PH meter.

### **Polyacrylamide gel electrophoresis (SDS-PAGE) of SF<sub>50</sub>**

SDS-PAGE (10%) was performed (26) under reducing condition to identify the individual proteins from prepared SF<sub>50</sub> solution (1 mg/ml in double distilled water).

Approximately 40 µg of protein was loaded in each lane. Molecular weight markers (Bio-Rad) were also run parallelly. After electrophoresis, the separating gel was stained with periodic acid-Schiff stain (27).

### **Isolation and preparation of goat cauda epididymal spermatozoa**

Testes from two Black Bengal bucks were collected from local abattoir immediately after slaughter and were brought to laboratory in thermos flask containing normal saline solution (NSS; 0.9% ) at 37°C. Tunica albuginea were removed from the testes and washed thoroughly with NSS. Fat-pad, blood vessels, adipose and connective tissues were removed carefully. Whole epididymides were dissected out from each testis. As per anatomical position each cauda epididymis was cut and placed into a polystyrene Petri dish containing 5 ml of PBS. Cauda epididymides were minced carefully and allowed to suspend in the medium for 10 min. To obtain sperms, gentle pressures on the excised tissues were given by clean glass rod.

The resultant suspension in the medium was filtered through nitex membrane to free the cellular debris.

The filtrate was collected into a clean glass test tube, centrifuged at 500 g for 10 min and the supernatant was discarded. Finally, 2 ml of PBS was added to sperm pellet, vortexed gently for 3 s and was kept at 37°C into an incubator in humid condition containing 5 % CO<sub>2</sub> in air for 30 min allowing sperm cells to swim-up into the medium. Before the experiment, sperm cells were aspirated carefully from upper layer of the stock medium and resuspended again into PBS to adjust the final concentration of  $2.5 \times 10^7$  cell/ ml, evaluated by Neubauer counting chamber. For in-vitro experiments progressively motile spermatozoa >50% after dilution was considered to avoid non specific agglutination.

Above procedures were performed at room temperature ( $35 \pm 2^\circ\text{C}$ ) and completed within 2 h after slaughter.

### **Preparation of test solutions**

To quantify the sperm agglutinating, immobilizing activities and titer of SF<sub>50</sub>, serial two

fold dilutions of test solutions of different protein concentrations were prepared by dissolving SF<sub>50</sub> with 0.15 PBS, PH 7.2 by double dilution (27) into different sterile screw-capped test tubes. Similarly, BSA solutions were prepared for the control study. Protein concentration for both the SF<sub>50</sub> and BSA were adjusted to 10.95 µg, 5.47 µg, 2.73 µg, 1.36 µg, 0.68 µg, 0.34 µg, 0.17 µg, 0.08 µg, 0.04 µg and 0.02 µg respectively in per ml of PBS for the experiment and kept at 37°C prior to the experiment.

### **Evaluation of spermatozoan agglutinability and motility**

The binding of SF<sub>50</sub> to the sperm membrane thereby its ability to agglutinate spermatozoa were estimated semi quantitatively.

For the evaluation, 20 µl each from prepared test solutions of different protein concentrations were taken into different Eppendorf tubes separately and 100 µl of sperm suspension was added (1:5) individually to each tube. Sperm-protein mixtures were vortexed gently. Observations were made under Leitz phase contrast microscope (x 200, x 400) immediately and after 20 s and 60 s respectively (28), placing 10 µl of each sperm-protein mixture onto microscopic glass slides. Two hundred sperm cells were counted randomly from 10 different microscopic fields to detect the number (%) of agglutinated spermatozoa as well as type of their agglutination. The sperm agglutinating activity of a sample was expressed as the highest fold of dilution that could agglutinate spermatozoa. Agglutination titer of SF<sub>50</sub> on sperm cells was recorded on a quantitative scale from 0 (no agglutination) to 3<sup>+</sup> (maximum to complete agglutination). The intensity (number) of sperm agglutination was calculated by haemocytometer as number of free spermatozoa before incubation (A<sub>0</sub>) and 20 s (A<sub>20</sub>) and 60 s (A<sub>60</sub>) respectively after the treatment. The percentage of agglutinated spermatozoa was calculated from  $100 \times (A_0 - A_{20}) / A_0$  and  $100 \times (A_0 - A_{60}) / A_0$ . For photography, treated sperm suspensions were gently smeared on glass slides, dried up, fixed in formal-buffer solution and stained with PBS buffered solution of 3% Rose-Bengal. Spermatozoan motility was assessed microscopically (29). Two fold serial dilutions of SF<sub>50</sub> solution, 20 µl each, was dispensed serially into different microtiter wells and fixed volume of sperm suspension, 100 µl, was added (1: 5) serially into each well and observed immediately under the phase contrast microscope (x 200, x 400) as above. A total of 100

spermatozoa were counted rapidly from ten different microscopic fields. The highest dilution of SF<sub>50</sub> that displayed complete immobilization of sperm within 20 s was considered as maximum effective dose (28). The percentage of inhibition of spermatozoan motility was calculated by comparing with the BSA control.

### Spermatozoan motility recovery test

Each treated sperm samples were washed and centrifuged twice with PBS at 500 g for 10 min and supernatant was discarded each time to remove the traces of SF<sub>50</sub>. To each sperm pellet buffered-glucose saline (0.2 g NaCl, 0.14 g NaHPO<sub>4</sub>, 0.14 g KH<sub>2</sub>PO<sub>4</sub>, 3 g D-glucose and double distilled water up to 100 ml, PH 7.4), 200µl, was mixed, vortexed gently and incubated in humid condition at 37 °C in a incubator containing 5% CO<sub>2</sub> in air for 30 min. Spermatozoan motility was observed under Leitz phase contrast microscope (x 400) by placing 5 µl of each treated sperm suspension onto clean microscopic glass slides. Even if a single sperm within the 10 fields examined showed any sign of jerking or motility, it was considered as “positive”, and the values were expressed in percentage of motile and/or viable spermatozoa (30). All the experiments were repeated six times including controls and their mean results were considered.

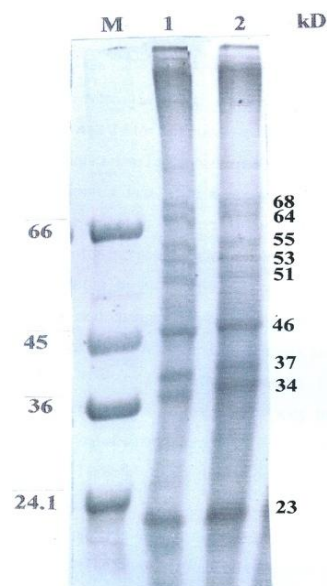
### Statistical analysis

All the data were analyzed by SPSS 10 (Statistical Package for Social Science) (31).

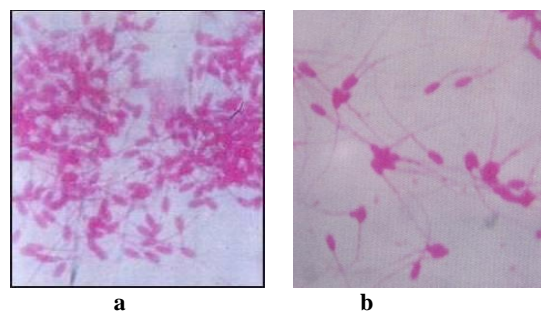
## Results

Total protein content and pH value of SF<sub>50</sub> were 109.5 µg/ ml and 7.4 respectively. SDS-PAGE of SF<sub>50</sub> revealed that nearly 20 polypeptide bands had an estimated molecular weight between 90 kD to 16 kD in which 68, 64, 55, 53, 51, 46, 37, 34 and 23 kD proteins exhibited major bands and 90, 87, 84, 78, 72, 47, 45, 30.5, 28, 26, 28, 18 and 16 kD proteins had minor bands respectively (Figure 1). During observation, sperm samples were assessed for pattern and degree of SF<sub>50</sub> induced agglutination as well as effect of incubation time on sperm agglutinability and motility of treated spermatozoa with different concentration of SF<sub>50</sub> and BSA. Observations revealed nature of sperm agglutination were head-to-head type, i.e. agglutinated cells were adherent to each other mostly at the acrosomal region (Figure 2a and 2b). After supplementation of any concentration of SF<sub>50</sub>, sperm cells were started to agglutinate almost instantly. There was a constant tendency to

enhance sperm agglutination in all the SF<sub>50</sub> medium and the average percentage of head-to-head type agglutinated spermatozoa significantly increased ( $p < 0.001$ ) in a concentration and timed dependant manner. The extent of agglutination was related to protein concentration. In all the cases increased incubation period had more pronounced effect on the number of sperm cells that agglutinated. Higher number of head-to-head agglutinated spermatozoa ( $75.83 \pm 0.55$ ) were found after addition of 10.95 µg of SF<sub>50</sub> within 20 s and increased ( $90.51 \pm 0.4$ ) over the incubation period at 60 s (Figure 2a), and lowest number of agglutinated spermatozoa  $3.66 \pm 0.45$  and  $12.58 \pm 0.4$  were found with 0.02 µg of SF<sub>50</sub> at 20 s and 60 s (Figure 2b) respectively.



**Figure 1.** Electrophoretic analysis (10 % SDS-PAGE) of SF<sub>50</sub> (lane 1 and 2) showing the polypeptides bands. Apparent molecular weights (kD) of the major bands are 68, 64, 55, 53, 51, 46, 37, 34 and 23 kD. Molecular weight markers (M) used BSA (66 kD), Egg Albumin (45 kD), Glyceraldehyde-3-Phosphate Dehydrogenase (36 kD) and Trypsinogen (24.1 kD).



**Figure 2: a.** (2 a) Formation of less number of large clumps with maximum number of agglutinated spermatozoa in the clumps at 60 s treated with 10.95 µg of SF<sub>50</sub>. **b.** (2 b) Formation of maximum number of small clumps with less number of agglutinated spermatozoa in the clumps at 60 s treated with 0.02 µg of SF<sub>50</sub> (Rose Bengal, x 400).

All the values were highly significant ( $p < 0.001$ ) between the treatment and incubation period respectively (Table I). The aggregated sperm cells were not dissociated by agitating the suspensions. Observations also revealed that after supplementation of SF<sub>50</sub>, the pattern of intense forward motility of spermatozoa changed immediately to vigorous and whiplash like movement for a few seconds and sudden attachment of sperm heads occurred. With higher doses of SF<sub>50</sub>, spermatozoa were agglutinated and immobilized instantly. Maximum numbers of sperm cells were immobilized within 20s up to the use of 0.68 µg SF<sub>50</sub>. However, with the other lower

concentrations of SF<sub>50</sub> sperm cells were also exhibited whiplash like movement instantly and after very few seconds sperm cells began to attach each other and clusters were formed, however, a good number of sperm cells exhibited either oscillated flageller movement, circular or irregular movement of the tail where sperm heads remained completely fixed and ultimately immobilized within 60s. No spermatozoan motility was recovered when SF<sub>50</sub> treated samples were incubated in buffered-glucose saline.

The BSA was observed to have no agglutinating or immobilizing effects on the sperm cells (Table I).

**Table I.** Incubation time period changes in the percentage of head-to-head agglutinated spermatozoa, percent inhibition of motility and agglutinating titer with different concentration of SF<sub>50</sub> and BSA on washed goat cauda epididymal spermatozoa.

Treatment/ Doses (µg)	Number of agglutinated spermatozoa (%)		Inhibition of motility (%)		Sperm agglutination titer	
	20 s	60 s	20 s	60 s	20 s	60 s
BSA (10.95)	-	-	-	-	-	-
SF <sub>50</sub>						
10.95	75.83 ± 0.55**	90.51 ± 0.4**	100		+++	+++
5.47	68.52 ± 0.7**	76.33 ± 0.54**	100		+++	+++
2.73	61.51 ± 0.7**	78.85 ± 0.56**	100		+++	+++
1.36	51.66 ± 0.5**	66.75 ± 0.64**	100		++	+++
0.68	43.66 ± 0.56**	58.74 ± 0.56**	100		++	++
0.34	36.00 ± 0.88**	49.66 ± 0.77**	93	100	++	++
0.17	28.66 ± 0.6**	36.27 ± 0.87**	85	100	+	++
0.08	20.51 ± 0.7**	29.05 ± 0.81**	72	100	+	++
0.04	11.83 ± 0.64**	20.16 ± 0.42**	61	92	+	+
0.02	3.66 ± 0.45**	12.58 ± 0.4**	55	84	+	+

n=6 (for each protein concentration and for each time interval); s = second Values expressed as Mean ± SE; - = absent. BSA = Bovine serum albumin - = No agglutination; + = least agglutination; ++ = moderate agglutination; +++ = maximum to complete agglutination; \*\*  $p < 0.001$  (between each treatment and within time interval).

## Discussion

The marine environment is exceptional reservoirs of bio-active natural compounds, many of which exhibit structural features that are not found in terrestrial natural compounds due to synthesize of unique secondary metabolites within the cells of marine organisms (32). Bioactive compounds from marine flora and fauna which contain various types of lectins are used as important tools for examining various modifications in the distributions of cellular glycoconjugates/cell surface receptors and the changes that occur in glycoconjugates during cell differentiation and maturation (33). Specific lectins bind to certain specific sugars. Due to sugar specificity the agglutination response of lectins is highly specific. As lectins possess high specificity to the accessible carbohydrate side chains, therefore, they are widely used as specific probes to investigate the cellular stages of differentiation,

maturation, microenvironments and their architectures, and can reveal heterogeneity in the distribution of glycoconjugates. Moreover, lectin binding proteins exhibit changes during embryonic differentiation, cell maturation, aging, metaplastic alterations, malignant transformations, blood typing, mitogenic stimulation (34, 14).

Present observation revealed that SF<sub>50</sub> was able to agglutinate and immobilize the sperm cells which varied with the concentration of SF<sub>50</sub> as well as influenced by the incubation period also. Probable reasons of these phenomena are not known clearly. However, Lectin induced agglutination is complex (34) and the molecular basis for the increased agglutinability is unknown. It could be that cell surface carbohydrates can act as cell-cell recognition molecules (35, 36) for agglutination of cells. Surface glycoconjugates on one cell may bind to complementary carbohydrate-binding protein (lectin) on another cells resulting in the initiation of a specific interaction. This may

result in the adhesion of the two cells via carbohydrates and specific cell surface receptors. Hence, explanation of goat sperm agglutination might be formation of glycoconjugates with the sialic acid moieties contained in the membrane component of the spermatozoa (37) after addition of SF<sub>50</sub> which is specific for sialic acid (23). Moreover, agglutination phenomenon induced by SF<sub>50</sub> indicted perhaps SF<sub>50</sub> possesses multiple sites or remain in the form of a multimer to bind sperm components resulting lectin-carbohydrate interaction. Furthermore, it was also presumed that SF<sub>50</sub> plausibly capable to recognize specific carbohydrate domains present on the goat acrosomal membrane and are responsible for formation of glycoconjugate which could be an important factor for head-to-head type agglutination of sperm cells.

Observation also revealed number of agglutinated spermatozoa increased over the time of incubation. Changes involved in SPM receptors induced by SF<sub>50</sub> as well as SF<sub>50</sub> binding site mobility of spermatozoa may occur during incubation. Increased agglutinability over the time may also happen due to capacitation of spermatozoa. Changes in lectin-binding or lectin induced agglutination associated with sperm capacitation have been described in model animal systems including mouse (38), hamster (39, 40), rat (41), rabbit (42, 43), guinea pig (6, 44-46) and ram (47). The cross-linked complexes formed between SF<sub>50</sub> and its specific multivalent carbohydrates and glycoconjugates on the sperm surface were thought to be able to modify membrane permeability and to induce capacitation thus responsible for more agglutination.

Observed sperm agglutination particularly in the acrosomal area also indicated that heterogeneous distribution of SF<sub>50</sub>-specific binding saccharide ligands may present only on the acrosomal surface. Heterogeneous distribution of sperm carbohydrate domains are also consistent with the finding of Nicolson *et al* (48) that sperm binding sites with Ferritin-lectin conjugates exhibited differences in the densities of lectin receptors in various sperm regions and changes in the same region occur during epididymal passage and after ejaculation in rabbit. However, it appears that SF<sub>50</sub> receptors are present on the goat head plasma membrane. Therefore, SF<sub>50</sub> induced sperm agglutination and increased agglutinability over the time might be due to changes and / or recognition involving receptors / carbohydrate domains of the sperm cell surfaces thereby formation of glycoconjugates induced by the SF<sub>50</sub>. Furthermore,

it is important to determine whether the agglutination and immobilization of sperm cells are due to specific glycoproteins present on the SPM or of protein glycosylations which are present on the cell surface membrane components. The explanation for sperm immobilization induced by SF<sub>50</sub> could be exocytosis of the SPM which require further study. The biochemical analysis of SF<sub>50</sub> and SPM glycoproteins will help to understand the underlying mechanisms and importance of terminal sugar residues for the study of binding and immobilizing characters of sperm cells.

## Conclusion

Present experiment reveals bio-active compound, SF<sub>50</sub>, isolated from marine cone snail *Telescopium telescopium* could be a novel biomarker to study the sperm surface and may prove an useful tool to differentiate in the structure compositions and for identification and characterization of mechanisms leading to male infertility. Moreover, sperm glycocalyx modification observed in this study could provide insights to the molecular modifications accompanying problems of subfertile goat and males of other species. More detailed pictures could be synthesized also on the sperm surface with the supplementation SF<sub>50</sub> for different biological activities of male gametes during maturation, capacitation, acrosome reaction, fertilization, including sperm surface heterogeneity and for sperm integrity. Moreover, SF<sub>50</sub> as an alternative source as local barrier contraceptive and/ or antifertility agent could be thought off. However, purification and characterization of SF<sub>50</sub> and its application require more scientific approach.

## References

1. Myles DG, Primakoff P. Establishment of sperm surface topography during development analyzed with monoclonal antibodies. In: Andre. J. (ed). *The Sperm Cell*. The Hague, Bostan, London: Martinius Nijhoff Publishers 1983; 127-130.
2. Myles DG, Primakoff P. Localized surface antigens of guinea pig sperm migrate to new regions prior to fertilization. *J Cell Biol* 1984; 99: 1634-1641.
3. Olson GE, Danjo BJ. Surface changes in rat spermatozoa during epididymal transit. *Biol Reprod* 1981; 24: 431-443.
4. Brown CR, Von Glos KI, Jones R. Changes in plasma membrane glycoproteins of rat spermatozoa during maturation in the epididymis. *J Cell Biol* 1983; 96: 256-264.
5. Jones R. Membrane remodeling during sperm maturation in the epididymis. *Oxford Reviews of Reproductive Biology* 1989; 11: 185-337.

6. Schwarz MA, Koehler JK. Alterations in lectin binding to guinea pig spermatozoa accompanying in-vitro capacitation and acrosome reaction. *Biol Reprod* 1979; 21: 1295-1307.
7. Sanz L, Calvete JJ, Mann K, Gabius HJ, Töpfer-Petersen E. Isolation and biochemical characterization of heparin binding proteins from boar seminal plasma: a dual role for sperm adhesions in fertilization. *Mol Reprod Dev* 1993; 35: 37-43.
8. Gwatkin R, Williams D. Receptor activity of the solubilized hamster and mouse zona pellucida before and after the zona reaction. *J Reprod Fertil* 1976; 19: 55-59.
9. Green DP. Mammalian fertilization as a biological machine: a working model for adhesion and fusion of sperm and oocyte. *Human Reprod* 1993; 8: 91-96.
10. Myles DG. Molecular mechanisms of sperm-egg membrane binding and fusion in mammals. *Dev Biol* 1993; 158: 35-45.
11. Kallajoki M, Malmi R, Virtanen I, Souminen J. Glycoconjugates of human sperm surface. A study with fluorescent lectin conjugates and *Lens culinaris* agglutinin affinity chromatography. *Cell Biol Int Rep* 1985; 9: 151-164.
12. Bao SN, de Souza W. Lectin binding sites on head structures of the spermatid and spermatozoon of the mosquito *Culex quinquefasciatus* (Diptera, Culicidae). *Histochemistry* 1992; 98: 365-371.
13. Okamura N, Dacheux F, Venien A, Onoe S, Huet JC, Dacheux JL. Localization of a maturation-dependent epididymal sperm surface antigen recognized by a monoclonal antibody raised against a 135- kilodalton protein in porcine epididymal fluid. *Bio Reprod* 1992 b; 47: 1040-1052.
14. Lis H, Sharon N. Lectins as molecules and as tools. *Annual Review of Biochemistry* 1986; 55: 35-67.
15. Perez-Pe R, Marti JJ, Tejedor A, Muino-Blanco T, Cebrian-Perez JA. Sperm-lectin agglutination combined with swim-up leads to an efficient selection of highly motile, viable and heterogeneous ram spermatozoa. *Theriogenology* 1995; 51 3: 623-636.
16. Sinowatz F, Friess AE. Localization of lectin receptors on bovine epididymal spermatozoa using a colloidal gold technique. *Histochemistry* 1983; 79: 335-344.
17. Sinowatz F, Volgmayr JK, Gabius HJ, Friess AE. Cytochemical analysis of mammalian sperm membranes. *Prog Histoch Cytoch* 1989; 194: 1-74.
18. Cantarelli M, Perishi A, Torelli MG, La SG. In-vitro test to assess human sperm fertilizing ability. *Acta Eur Fertil* 1992; 23: 5-14.
19. Mladenovic I, Hajducovic L, Genbacev O, Cuperlovic M, Movsesijan M. Lectin binding as a biological test in vitro for prediction of functional activity of human spermatozoa. *Gamete Res* 1993; 24: 403-413.
20. Goldstein IJ, Hughes RC, Monsigny A, Osawa T, Sharon N. What should be called lectin? *Nature* 1980; 285: 66-68.
21. Gilboa-Garber N, Susswein AJ, Mizrabi L, Avichezer D. Purification and characterization of the gonad lectin of *Aplysia depilans*. *FEBS Letter* 1985; 181: 260-270.
22. Yeaton RW. Invertebrate lectins. II. Diversity of specificity. Biological synthesis and function in recognition. *Dev Comp Immunol* 1981; 5: 535-545.
23. Pakrashi A, Datta U. in vitro sperm agglutination and spermicidal activity of protein isolated from a marine mollusc *Telescopium telescopim* (gastropoda). *Indian J Mar Sci* 2001; 30: 93-97.
24. Datta U, Pakrashi A. Morphological features of sperm from a marine mollusc (*Telescopium telescopim*), some immunological and physicochemical studies of extract from spermatheca gland. *Proceeding of Zoological Society (Calcutta)*, India 2000; 53 1: 15-23.
25. Lowry OH, Rossebrough NJ, Farr AI, Randall RJ. Protein measurement with the folin-phenol reagent. *Journal of Biochem* 1951; 193: 265-266.
26. Laemmli UK. Cleavage of structural proteins during the assembly at the head of bacteriophage-T-4. *Nature* 1970; 227: 680-685.
27. Hudson L, Hay FC. *Practical Immunology*. 3<sup>rd</sup> ed. Oxford, London: Blackwell Scientific Publication; 1989.
28. Sander FV, Cramer SD. A practical method for the spermicidal action of chemical contraceptive. *Human Fertility* 1941; 6: 134-137.
29. World Health Organization 1999 WHO laboratory manual for the examination of human semen and sperm-cervical mucus interaction. 4<sup>th</sup> ed. Cambridge, UK: Cambridge University Press.
30. Gopalakrishnan K. Current concept in fertility regulation and reproduction. (eds). Puri CP, Vanlook PFA. New Delhi; Wiley-Eastern LTD. 1992; 157-164.
31. Duncan DB. Multiple range and multiple F test. *Biometrics* 1955; 11: 1-42.
32. Ireland CM, Roll DM, Molinski TF, McKee TC, Zarbriske TM, Swersey JC. 1988 Uniqueness of marine environment. Categories of marine natural products from invertebrates. In: Biomedical importance of marine organisms. California, USA: California Academy of Science. 41-47.
33. Spicer SS. Advantages of histochemistry for the study of cell biology. *Histochemical Journal* 1993; 25: 531-547.
34. Nicolson GL. The interaction of lectins with animal cell surfaces. *Rev Cytol* 1974; 39: 89-90.
35. Fraizer W, Glaser L. Surface components and cell recognition. *Rev Biochem* 1979; 48: 491-523.
36. Monsigny M. The roles of carbohydrates in cell recognition, endogenous lectins. *Biol Cell* 1984; 51 (special issue): 113.
37. Peleg BA, Ianconescu M. Sperm agglutination and sperm adsorption due to mixoviruses. *Nature* 1966; 211: 1211-1212.
38. Koehler JK, Sato K. Changes in lectin labeling pattern of mouse spermatozoa accompanying capacitation and acrosome reaction. *J Cell Biol* 1978; 79: 165a.
39. Kinsey WH, Koehler JK. Cell surface changes associated with in vitro capacitation of hamster sperm. *J Ultrastruct Res* 1978; 64: 1-13.
40. Ahuja KK. Lectin-coated agarose beads in the investigation of sperm capacitation in hamster. *Dev Biol* 1984; 104: 131-142.
41. Lewin LM, Weissenberg R, Sobel JS, Marcus Z, Nebel L. Differences in Con A-FITC binding of rat spermatozoa during epididymal maturation and capacitation. *Arch Androl* 1979; 2: 279-281.
42. Gordon M, Dandekar PV, Bartoszewicz W. The surface coat of epididymal, ejaculated and capacitated sperm. *J Ultrastruct Res* 1975; 50: 199-207.
43. O'Rand M. restriction of a sperm surface antigen's mobility during capacitation. *Dev Biol* 1977; 55: 260-270.
44. Talbot P, Franklin LE. Surface modification of guinea pig sperm during in vitro capacitation: An assessment using lectin-induced agglutination of living sperm. *J Exp Zool* 1978; 203: 1-14.
45. Talbot P, Franklin LE. Trypsinization increases lectin-induced agglutinability of uncapacitated guinea pig sperm. *J Exp Zool* 1978 b; 204: 291-297.

46. Talbot P, Chaeon R. Detection of modifications in the tail of capacitated guinea pig sperm using lectins. *J Exp Zool* 1981; 216: 435-444.
47. Courtens JL, Fournier-Delpech S. Modification in the plasmamembranes of epididymal ram spermatozoa during maturation and incubation *in utero*. *J Ultrastruct Res* 1979; 68: 136-148.
48. Nicolson GL, Usui N, Yanagimachi R, Yanagimachi H, Smith JR. Lectin binding sites on the plasmamembranes of rabbit spermatozoa: changes in surface receptors during epididymal maturation and after ejaculation. *The J Cell Biol* 1977; 74: 950-962.