

Initial Metabolic Tumor Volume Measured by ^{18}F -FDG PET/CT Can Predict the Outcome of Osteosarcoma of the Extremities

Byung Hyun Byun¹, Chang-Bae Kong², Jihyun Park¹, Youngseok Seo³, Ilhan Lim¹, Chang Woon Choi¹, Wan Hyeong Cho², Dae-Geun Jeon², Jae-Soo Koh⁴, Soo-Yong Lee², and Sang Moo Lim¹

¹Department of Nuclear Medicine, Korea Cancer Center Hospital, Korea Institute of Radiological and Medical Sciences, Seoul, Republic of Korea; ²Department of Orthopedic Surgery, Korea Cancer Center Hospital, Korea Institute of Radiological and Medical Sciences, Seoul, Republic of Korea; ³Department of Radiation Oncology, Korea Cancer Center Hospital, Korea Institute of Radiological and Medical Sciences, Seoul, Republic of Korea; and ⁴Department of Pathology, Korea Cancer Center Hospital, Korea Institute of Radiological and Medical Sciences, Seoul, Republic of Korea

We evaluated the ability of metabolic and volumetric parameters measured by pretreatment ^{18}F -FDG PET/CT to predict the survival of patients with osteosarcoma of the extremities. **Methods:** The records of 83 patients with American Joint Committee on Cancer stage II extremity osteosarcoma treated with surgery and chemotherapy were retrospectively reviewed. Imaging parameters (maximum standardized uptake value, metabolic tumor volume [MTV], total lesion glycolysis, and tumor volume based on MR images) were measured before treatment, and histologic responses to neoadjuvant chemotherapy were assessed by examination of postsurgical specimens. Receiver-operating-characteristic curve analyses and the Cox proportional hazards model were used to analyze whether imaging and clinicopathologic parameters could predict metastasis-free survival. **Results:** Of the imaging parameters, MTV at the fixed standardized uptake value threshold of 2.0 (MTV(2.0)) most accurately predicted metastasis by receiver-operating-characteristic curve analysis (area under the curve = 0.679, $P = 0.011$). By multivariate analysis, MTV(2.0) > 105 mL (relative risk, 3.93; 95% confidence interval, 1.55–9.92) and poor response to neoadjuvant chemotherapy (relative risk, 4.83; 95% confidence interval, 1.64–14.21) independently shortened metastasis-free survival ($P = 0.004$ for both parameters). The stratification of patients by the combined criteria of MTV(2.0) and histologic response predicted outcome in more detail. **Conclusion:** MTV is an independent predictor of metastasis in patients with osteosarcoma of the extremities. The combination of MTV and histologic response predicts survival more accurately than the chemotherapeutic response alone.

Key Words: ^{18}F -FDG; PET/CT; metabolic tumor volume; osteosarcoma; survival

J Nucl Med 2013; 54:1725–1732

DOI: 10.2967/jnumed.112.117697

Although its absolute incidence (a few cases per year per million persons) is lower than that of other malignant tumors, osteosarcoma is the most common primary bone malignancy (1). The long-term survival of patients with osteosarcoma has improved significantly since the introduction of neoadjuvant and adjuvant chemotherapy (2). However, the clinical behavior of osteosarcoma is highly heterogeneous: although up to 15% of patients with osteosarcoma have been cured by surgery alone (3), a substantial number eventually experience failure of all available treatment modalities, including surgery and chemotherapy. A clinical staging system based on the tumor grade, size, and presence of skip lesions or distant metastases (4,5) and the histologic response to neoadjuvant chemotherapy (6,7) have been reported to be the most important predictors of survival. However, these prognostic factors do not always provide a satisfactory result due to the heterogeneity of the tumor population, because the risk for relapse can differ among patients with the same stage of disease or chemotherapeutic response. Moreover, the histologic response can be assessed only by examination of resected specimens after the completion of neoadjuvant chemotherapy.

^{18}F -FDG PET/CT has been widely used for the staging (8) and therapeutic monitoring (9,10) of osteosarcoma based on the elevated glucose utilization of malignant cells. The degree of ^{18}F -FDG uptake, as expressed by the standardized uptake value (SUV), can be readily measured and quantified by ^{18}F -FDG PET/CT. However, the prognostic value of the SUV for patients with osteosarcoma is not proven (11,12). Metabolic tumor volume (MTV) is defined as the volume of tumor tissue with an SUV above a minimum threshold as measured by ^{18}F -FDG PET/CT. Although MTV has been suggested to be an independent predictor of the clinical outcome of certain cancers (13–16), the prognostic value of MTV for osteosarcoma is unknown. Total lesion glycolysis (TLG), another indicator of tumor metabolism, is defined as the product of the mean SUV and the MTV of tumor tissue above a minimum SUV threshold (17). Recent studies have measured TLG values using ^{18}F -FDG PET/CT and demonstrated their prognostic significance for osteosarcoma (11) and other cancers (16,18).

In the current study, we evaluated the abilities of the maximum standardized uptake value (SUV_{max}) and MTV and TLG values calculated for different SUV thresholds measured by pretreatment ^{18}F -FDG PET/CT to predict the survival of patients with osteosarcoma

Received Nov. 26, 2012; revision accepted Apr. 29, 2013.

For correspondence or reprints contact: Sang Moo Lim, Department of Nuclear Medicine, Korea Cancer Center Hospital, Korea Institute of Radiological and Medical Sciences (KIRAMS), 75 Nowongil, Nowon Gu, Seoul, 139-706, Republic of Korea.

E-mail: smlim328@kcch.re.kr

Published online Aug. 15, 2013.

COPYRIGHT © 2013 by the Society of Nuclear Medicine and Molecular Imaging, Inc.

and investigated whether combining these parameters with the histologic response could improve the prediction of clinical outcome.

MATERIALS AND METHODS

Patients, Treatment, and Clinical Follow-up

One hundred seventy-three consecutive patients with osteosarcoma were registered between June 2006 and August 2010. Eligibility requirements included newly diagnosed, histologically proven high-grade primary intramedullary osteosarcoma; completion of preoperative chemotherapy, surgery, and postoperative chemotherapy; no more than 2 wk elapsed between ^{18}F -FDG PET/CT or MR imaging and the initiation of preoperative chemotherapy; no history of previous treatment except for biopsy; and follow-up for more than 2 y for metastasis-free patients, based on our previous report (19). Patients with histologically low-grade osteosarcoma (American Joint Committee on Cancer [AJCC] stage I), which was associated with a lower likelihood of metastases and treated by surgery only (4,20), were excluded in the current study. Because patients with pelvic and vertebral osteosarcoma (21), age greater than 40 y (22), and skip lesions (AJCC stage III) or distant metastases at initial presentation (AJCC stage IV) have previously been reported to have poor outcomes (4), such patients were excluded from the current study. As a result, patients with nonextremity osteosarcoma ($n = 14$), treatment by chemotherapy ($n = 5$) or surgery ($n = 15$) only, skip lesions or distant metastases at initial presentation ($n = 28$), age greater than 40 y ($n = 13$), and lack of available ^{18}F -FDG PET/CT or MR imaging results ($n = 15$) were excluded, and the remaining 83 patients were retrospectively analyzed in the present study. The institutional review board approved this retrospective study, and the requirement to obtain informed consent was waived.

All patients underwent preoperative chemotherapy, surgery, and postoperative chemotherapy and were followed up as previously described (19). The length of follow-up ranged from 9 to 72 mo, with a median length of follow-up of 43 mo. Two of 83 patients (2.4%) were followed from 6 to 12 mo, 10 patients (12.0%) from 13 to 24 mo, 18 patients (21.7%) from 25 to 36 mo, and 53 patients (63.9%) from 37 mo and over. Metastases were verified by histologic confirmation or follow-up cross-sectional imaging results including ^{18}F -FDG PET/CT, MR imaging, bone scanning, and x-ray for at least 6 mo. The histologic response to neoadjuvant chemotherapy was assessed by examination of postsurgical specimens and was graded on the basis of the percentage of tumor necrosis as grades III and IV ($\geq 90\%$ necrosis), indicating a good response, and grades I and II ($< 90\%$ necrosis), indicating a poor response (23).

^{18}F -FDG PET/CT Imaging

PET/CT data were acquired using a Biograph6 PET/CT scanner (Siemens Medical Solutions). All patients fasted for at least 6 h before the intravenous administration of 7.4 MBq of ^{18}F -FDG per kg of body weight, and all patients' blood glucose levels were less than 7.2 mmol/L at this time. PET/CT imaging from the vertex to the upper thigh (5–6 bed positions) was performed beginning 60 min after ^{18}F -FDG injection, and PET/CT images spanning the sites of tumors located in the extremities (6–7 bed positions) were subsequently acquired. During the PET/CT scans, CT images without intravenous iodinated contrast were obtained using a 6-slice helical CT scanner, and the imaging parameters used for CT scanning were as follows: 130 kVp, 30 mA, 0.6-s/CT rotation, and a pitch of 6. Then, PET emission data were acquired over the corresponding area with a 16.2-cm axial field of view at 3.5 min per bed position. The CT data were used for attenuation correction, and the images were reconstructed using a conventional iterative algorithm (ordered-subsets expectation maximization, 2 iterations and 8 subsets).

MR Imaging

MR imaging was performed using a 1.5-T scanner (Signa Horizon; GE Healthcare). The MR imaging sequences used to obtain the images available for review included a spin-echo T1-weighted sequence (repetition time/echo time, 380–650 ms/10–20 ms) without gadolinium enhancement and a fast spin-echo T2-weighted sequence (1,500–2,500 ms/60–80 ms). T1-weighted images were also acquired, with or without fat suppression, after intravenous injection of gadopentate dimeglumine (0.1 mmol/kg, Magnevist; Schering).

Imaging Analysis

All PET/CT images were reviewed on e-soft workstations (Siemens Medical Systems). An ellipsoid volume of interest was drawn to include the entire primary tumor of the extremity and the SUV_{max} corrected for body weight, and the dose of ^{18}F -FDG injected was measured for each ^{18}F -FDG PET/CT dataset. MTVs were calculated on the basis of the descriptions of Biehl et al. (24) and Costelloe et al. (11). Previous studies of patients with osteosarcoma measured MTVs and TLGs using threshold SUVs of 1.5–3.0 (9) or a relative threshold of 45% of the SUV_{max} of the tumor areas (11). Im et al. reported that an SUV threshold of 1.5 could not clearly discriminate between tumor and neighboring normal tissue and that an SUV threshold of 3 underestimated the tumor area. Therefore, the MTVs in this study were calculated automatically by summing the volumes of voxels with threshold SUVs of 2.0, 2.5, and 45% of the SUV_{max} in the volume of interest, and the results were designated MTV(2.0), MTV(2.5), and MTV(45%), respectively. Similarly, total lesion glycolysis (TLG) was calculated as $(\text{MTV}) \times (\text{mean SUV})$ using threshold SUVs of 2.0, 2.5, and 45% of the SUV_{max} in the volume of interest and the results designated TLG(2.0), TLG(2.5), and TLG(45%), respectively.

Intramedullary tumor lengths were measured from coronal sections of unenhanced T1-weighted sequences, whereas tumor widths and depths were measured from enhanced axial T1-weighted sequences and T2-weighted sequences without fat suppression (10). MR images were independently reviewed by 2 of the authors. When the sizes determined by these 2 reviewers differed by more than 10%, the images were reviewed simultaneously and a decision was made by consensus (25). Then, the tumor volume based on MR images (MRV) was calculated from the tumor length, width, and depth using the ellipsoid formula (26).

Study Design

To evaluate the prognostic value of pretreatment ^{18}F -FDG PET parameters and to assess its additional value over known prognostic factors, we performed a retrospective analysis of 83 patients with osteosarcoma. Because of the nature of the study, we did not plan a sample size. The primary endpoint was metastasis-free survival, a composite endpoint determined by the time from the date of diagnosis to the date of metastasis.

Statistical Analysis

Descriptive statistics were calculated for the baseline characteristics. We presented statistics as the frequencies and percentages for categorical variables or as the mean \pm SD for normally distributed continuous variables or as the median (interquartile range) for nonnormally distributed continuous variables. All continuous variables were tested for normal distribution using the Shapiro–Wilk test. The Pearson correlation coefficient was used for the analyses of the correlations of the MRV with the MTV values for different cutoff values of SUV. The prognostic values of the imaging parameters (SUV_{max} , volume parameters [MRV and MTV values], and TLG values) for metastasis were determined by analysis of the areas under the receiver-operating-characteristic (ROC) curves. Correlations between the most effective prognostic factor among the imaging parameters and various clinicopathologic parameters were assessed using the χ^2 test. The Cox

proportional hazards model with a backward conditional stepwise procedure was used to evaluate prognostic variables, including SUV_{max} , MTV, TLG, age, sex, AJCC stage, tumor location, histologic subtype, and histologic response. We confirmed the proportional hazards assumption using the Schoenfeld test (27) and plotted the Martingale residuals against continuous variables to detect nonlinearity (28). Model calibration was assessed with the Hosmer–Lemeshow statistic (29), and the calibration curve was calculated by bootstrapping 200 samples with replacement from the original patients used to fit the Cox model (30). Model discrimination was assessed with the Harrell concordance index (C-index) (31). The C-index has values from 0 to 1, with 0.5 indicating a random model with no variables and with 1 (or 0) a perfect order concordance. Metastasis-free survival curves were plotted using Kaplan–Meier methods, and differences in survival between groups were assessed by the log-rank test. The statistical tests were performed using SPSS (version 13.0; SPSS, Inc.) and MedCalc (version 12.3; MedCalc Software). All *P* values were 2-sided, and *P* values of less than 0.05 were accepted as indicating statistical significance.

RESULTS

Patient Characteristics

Eighty-three eligible patients (62 men and 21 women; mean age, 16 y; age range, 8–37 y; 34 patients [41%] with AJCC stage IIA and 49 patients [59%] with AJCC stage IIB osteosarcoma) were enrolled in this study. The location of the tumor was the femur in 42 patients (51%), tibia in 28 (34%), humerus in 9 (11%), and elsewhere in 4 (5%). The histologic subtype was osteoblastic in 62 patients (75%), chondroblastic in 13 (16%), fibroblastic in 6 (7%), and other in 2 (2%). The largest dimension of the tumors before neoadjuvant chemotherapy ranged from 2.2 to 21.9 cm (mean, 9.4 cm).

The mean SUV_{max} was 9.5 ± 5.7 , and the mean MRV was 138.6 ± 119.1 mL. The mean MTV(2.0), MTV(2.5), and MTV(45%) values were 138.6 ± 111.3 , 106.3 ± 93.4 , and 51.9 ± 40.8 mL, respectively. The mean TLG(2.0), TLG(2.5), and TLG(45%) values were 596.5 ± 618.2 , 524.6 ± 590.4 , and 304.0 ± 345.7 g, respectively.

Follow-up data were available through August 2012. The metastasis-free interval ranged from 3 to 72 mo, with a median metastasis-free interval of 38 mo. Up to the time of analysis, 24 patients (29%) had experienced distant metastasis, whereas the remainder had not. The estimated 3- and 5-y metastasis-free survival rates were 71.4% (95% confidence interval [CI], 62.1%–81.3%) and 67.2% (95% CI, 54.5%–79.1%), respectively. Metastases were located in the lung in 18 patients, in the bone in 5, and in the chest wall in 1.

Correlations Between MRV and MTV Values

Of the MTV values calculated for various SUV thresholds, MTV(2.0) correlated best with MRV ($r = 0.65$, $P < 0.001$) (Fig. 1). MTV(2.5) ($r = 0.61$, $P < 0.001$) and MTV (45%) ($r = 0.35$, $P = 0.001$) also correlated significantly with MRV.

Comparisons Among Imaging Parameters for Predicting Prognosis

The abilities of the SUV_{max} , MRV, MTV, and TLG values for various SUV thresholds to predict metastasis-free survival were calculated from their ROC curves (Fig. 2). The area under the curve (AUC) of SUV_{max} was 0.550 ($P = 0.476$). Among the volume parameters (MRV and MTVs), MTV(2.0) produced the highest AUC (0.679; $P = 0.011$). The AUC values of MRV, MTV(2.5), and MTV(45%) were 0.652 ($P = 0.031$), 0.676 ($P = 0.012$), and 0.660 ($P = 0.023$), respectively. Among the TLG values,

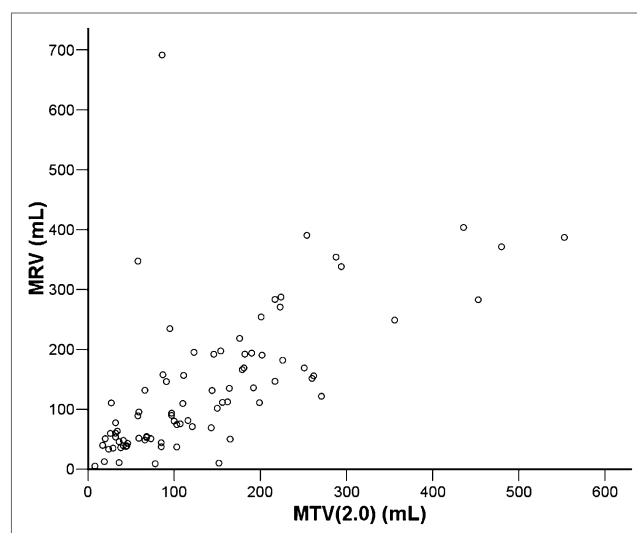


FIGURE 1. MTV(2.0) and MRV before neoadjuvant chemotherapy are significantly correlated ($r = 0.65$, $P < 0.001$).

TLG(45%) produced the highest AUC (0.660; $P = 0.023$). The AUC values of TLG(2.0) and TLG(2.5) were 0.643 ($P = 0.041$) and 0.648 ($P = 0.035$), respectively. These results showed MTV(2.0) to be the most effective parameter from pretreatment MR imaging and PET/CT for predicting metastasis.

Clinicopathologic Characteristics of Patients with Large MTV(2.0) Values

The clinicopathologic characteristics of patients according to their MTV(2.0) values (small [MTV(2.0) ≤ 105 mL] vs. large [MTV(2.0) > 105 mL]) are summarized in Table 1. Age, sex, histologic subtype, and histologic response did not differ significantly between patients with small and large values of MTV(2.0). Large MTV(2.0) values correlated significantly positively with AJCC stage IIB ($P < 0.001$) and negatively with tumor location in the humerus ($P = 0.026$).

Survival Analysis

Among the imaging parameters, we included only MTV(2.0) and TLG(45%) in the survival analysis and presented the survival data according to the clinicopathologic variables (Table 2). Univariate analysis demonstrated MTV(2.0), TLG(45%), AJCC stage, and histologic response to be associated with metastasis-free survival. By multivariate analysis, only an MTV(2.0) > 105 mL (relative risk [RR], 3.93; 95% CI, 1.55–9.92) and poor histologic response (RR, 4.83; 95% CI, 1.64–14.21) independently shortened the metastasis-free survival. The assumption of proportional hazards was not violated for any of the continuous variables included in the final model. The Martingale residual analysis for each prognostic variable showed that the Cox regression model was appropriate for analyzing the metastasis-free survival in the current study. The predictive accuracy of this model correlated well with the observed events (76% of correct classification, Hosmer–Lemeshow goodness-of-fit $P = 0.521$). Calibration curves for 5-y metastasis-free survival predictions are shown in Supplemental Figure 1 (supplemental materials are available at <http://jnm.snmjournals.org>). The Harrell C-index increased when MTV(2.0) was added to a model with the histologic response alone (0.778; 95% CI, 0.673–0.862, vs. 0.688; 95% CI, 0.577–0.785).

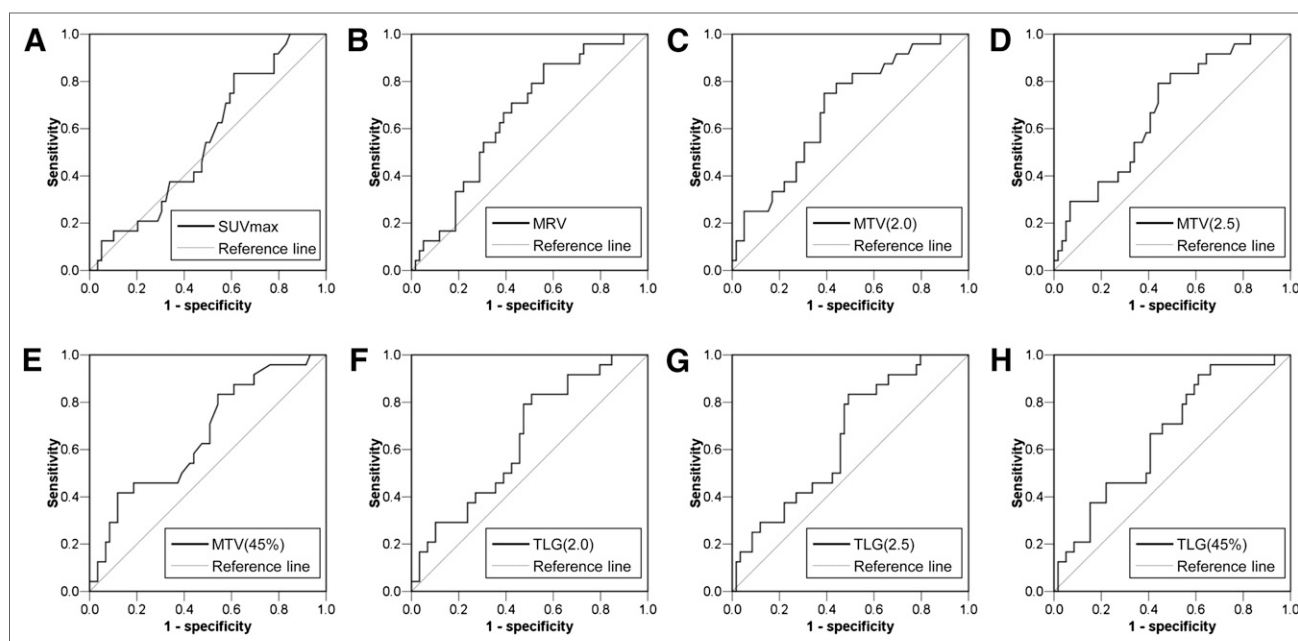


FIGURE 2. ROC curves using SUVmax (A), MRV (B), MTVs at different cutoff SUVs (C–E), and TLGs at different cutoff SUVs (F–H) to predict metastasis. AUCs of SUV_{max} and MRV were 0.550 ($P = 0.476$) (A) and 0.652 ($P = 0.031$) (B), respectively. AUCs of MTV(2.0), MTV(2.5), and MTV(45%) were 0.679 ($P = 0.011$) (C), 0.676 ($P = 0.012$) (D), and 0.660 ($P = 0.023$) (E), respectively. AUCs of TLG(2.0), TLG(2.5), and TLG(45%) were 0.643 ($P = 0.041$) (F), 0.648 ($P = 0.035$) (G), and 0.660 ($P = 0.023$) (H), respectively.

A separate multivariate analysis omitting MTV(2.0) found TLG(45%) (RR, 3.64; 95% CI, 1.53–8.65) and poor histologic response (RR, 6.19; 95% CI, 2.08–18.41) to be independent predictors of shorter metastasis-free survival (Table 3).

Survival Analysis According to MTV(2.0) and Histologic Response

As illustrated in Figure 3, patients ($n = 41$) with tumors with larger MTV(2.0) values (>105 mL) had significantly lower 3-y

TABLE 1
Patient Characteristics for Groups with MTV(2.0) ≤ 105 and > 105 mL

Variable	MTV(2.0) ≤ 105 mL* (n)	MTV(2.0) > 105 mL* (n)	RR	95% CI	P^\dagger
Age (y)					
≤ 15	29 (69.0)	21 (51.2)	1		
> 15	13 (31.0)	20 (48.8)	2.13	0.87–5.21	0.099
Sex					
Male	30 (71.4)	32 (78.0)	1		
Female	12 (28.6)	9 (22.0)	0.70	0.26–1.91	0.489
AJCC stage					
IIA	28 (66.7)	6 (14.6)	1		
IIB	14 (33.3)	35 (85.4)	11.67	3.97–34.28	< 0.001
Location					
Femur	17 (40.5)	25 (61.0)	1		
Tibia	13 (31.0)	15 (36.6)	0.79	0.30–2.06	0.622
Humerus	8 (19.0)	1 (2.4)	0.09	0.01–0.74	0.026
Other	4 (9.5)	0	Not assessed	Not assessed	Not assessed
Subtype					
Osteoblastic	30 (71.4)	32 (78.0)	1		
Chondroblastic	7 (16.7)	6 (14.6)	0.80	0.24–2.67	0.721
Fibroblastic	4 (9.5)	2 (4.9)	0.69	0.28–1.66	0.401
Other	1 (2.4)	1 (2.4)	0.98	0.38–2.50	0.964
Histologic response					
Good	19 (45.2)	17 (41.5)	1		
Poor	23 (54.8)	24 (58.5)	1.17	0.49–2.78	0.729

*Optimal cutoff value for predicting metastasis determined using ROC curve analysis.

$^\dagger P$ values were produced using χ^2 test.

Data in parentheses are percentages.

TABLE 2
Cox Proportional Hazards Models for Metastasis-Free Survival

Characteristic	<i>n</i>	Univariate			Multivariate		
		RR	95% CI	<i>P</i>	RR	95% CI	<i>P</i>
MTV(2.0) (mL)							
≤105	42 (50.6)		1		1		
>105	41 (49.4)	3.80	1.50–9.59	0.002	3.93	1.55–9.92	0.004
TLG(45%) (g)							
≤187	42 (50.6)		1		1		
>187	41 (49.4)	2.47	1.056–5.79	0.037	1.98	0.66–5.93	0.222
Age (y)					Not assessed		
≤15	50 (60.2)	1					
>15	33 (39.8)	1.26	0.56–2.86	0.577			
Sex					Not assessed		
Male	62 (74.7)	1					
Female	21 (25.3)	0.94	0.37–2.36	0.889			
AJCC stage							
IIA	34 (41.0)	1			1		
IIB	49 (59.0)	2.88	1.07–7.71	0.028	1.58	0.50–4.93	0.514
Location					Not assessed		
Femur	42 (50.6)	1					
Tibia	28 (33.7)	1.70	0.65–4.43	0.276			
Humerus	9 (10.8)	0.87	0.26–3.13	0.868			
Other	4 (4.8)	0.73	0.10–5.60	0.762			
Subtype					Not assessed		
Osteoblastic	62 (74.7)	1					
Chondroblastic	13 (15.7)	1.47	0.58–3.72	0.414			
Fibroblastic	6 (7.2)	0.04	0–34.31	0.354			
Other	2 (2.4)	0.05	0–1,621.33	0.565			
Histologic response							
Good	36 (43.4)	1			1		
Poor	47 (56.6)	4.68	1.60–13.74	0.002	4.83	1.64–14.21	0.004

Data in parentheses are percentages.

(57% vs. 85%) and 5-y (47% vs. 85%) metastasis-free survival rates than patients with smaller tumors ($P = 0.002$). Similarly, patients with a poor histologic response had worse 3-y (55% vs. 92%) and 5-y (55% vs. 73%) metastasis-free survival rates than patients who showed a good histologic response ($P = 0.002$).

The entire cohort was classified on the basis of the histologic response and MTV(2.0) into 4 groups: group I, patients with MTV(2.0) ≤ 105 and good histologic response ($n = 19$); group II,

patients with MTV(2.0) ≤ 105 and poor histologic response ($n = 23$); group III, patients with MTV(2.0) > 105 and good histologic response ($n = 17$); and group IV, patients with MTV(2.0) > 105 and poor histologic response ($n = 24$). The 3-y metastasis-free survival rates of groups I, II, III, and IV were 100%, 73%, 82%, and 38%, respectively, whereas the 5-y metastasis-free survival rates of groups I, II, III, and IV were 100%, 73%, 41%, and 38%, respectively. The log-rank test showed significant differences in survival

TABLE 3
Multivariate Cox Model Without Entering Variable MTV(2.0)

Characteristic	<i>n</i>	Univariate			Multivariate		
		RR	95% CI	<i>P</i>	RR	95% CI	<i>P</i>
TLG(45%) (g)							
≤187	42 (50.6)		1		1		
>187	41 (49.4)	2.47	1.056–5.79	0.037	3.64	1.53–8.65	0.003
AJCC stage							
IIA	34 (41.0)	1			1		
IIB	49 (59.0)	2.88	1.07–7.71	0.028	2.00	0.72–5.60	0.184
Histologic response							
Good	36 (43.4)	1			1		
Poor	47 (56.6)	4.68	1.60–13.74	0.002	6.19	2.08–18.41	0.001

Data in parentheses are percentages.

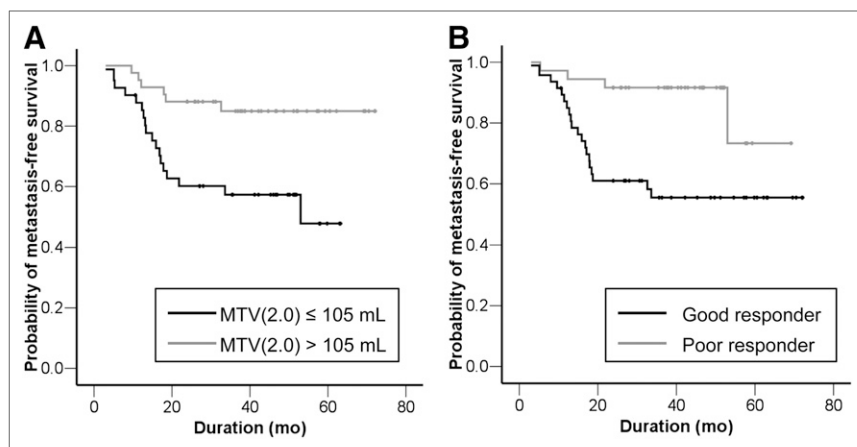


FIGURE 3. Kaplan-Meier estimate of metastasis-free survival by MTV(2.0) (A) and by histologic response (B).

between each group and every other ($P = 0.019$ for group I vs. II, $P = 0.025$ for group I vs. III, $P < 0.001$ for group I vs. IV, $P = 0.016$ for group II vs. IV, and $P = 0.026$ for group III vs. IV, respectively) except for group II versus group III ($P = 0.928$) (Fig. 4). The exemplary images of MRV and MTV at different cutoff SUVs are shown in Figure 5.

DISCUSSION

Most protocols used today use chemotherapy both before and after surgery in patients with osteosarcoma. Delayed removal of tumor after neoadjuvant chemotherapy, however, may compromise clinical outcomes (32), and no convincing survival benefit from neoadjuvant chemotherapy has been proven (21,33). Risk-adapted

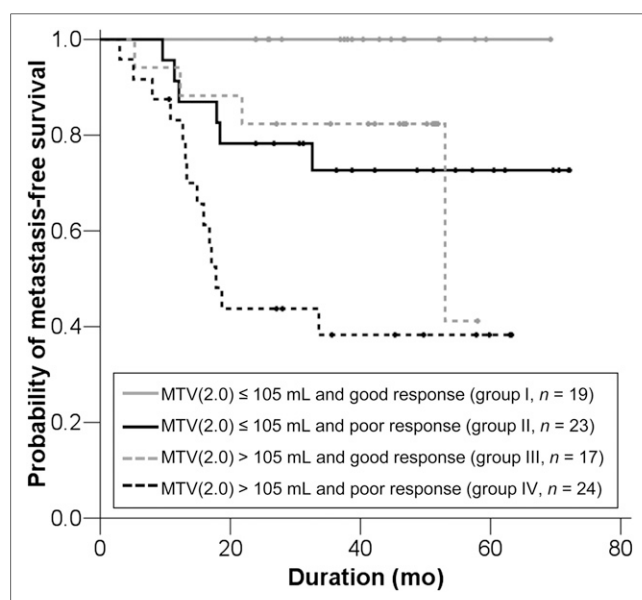


FIGURE 4. Kaplan-Meier metastasis-free survival curves of risk groups defined by MTV(2.0) and histologic response. Five-year metastasis-free survival rates were 100% in group I, 72.6% in group II, 41.1% in group III, and 38.2% in group IV. Log-rank test showed difference in survival among the 4 groups, except for between group II and group III ($P = 0.928$).

therapy based on prognostic factors other than histologic response is hence needed to minimize the ineffective use of neoadjuvant chemotherapy. In the current study, the addition of MTV(2.0), which is available before neoadjuvant chemotherapy, to histologic response provided more detailed prediction of outcome than histologic response alone. This combination may be a useful tool for planning risk-adapted therapy in patients with osteosarcoma.

MTV has some advantages over MRV for use as a prognostic indicator. The MRV calculated from 3 parameters (length, width, and depth) using the ellipsoid equation does not represent the real tumor burden because tumors are not always uniformly shaped and could contain necrotic portions with nonviable tissue (26,34). MTV, in contrast,

is based on the metabolism of the malignant tumor and hence more accurately reflects the real tumor burden. Moreover, MTV can be readily measured by drawing a volume of interest around the tumor, enabling very high intra- and interobserver reproducibility (18). Although previous studies have assessed the prognostic value of tumor size or tumor volume of osteosarcoma using different cutoff values, ranging from 8 to 10 cm (35–37) and 60 to 300 mL (22,26,38), respectively, the present study suggests that MTV is a better predictor of survival than the tumor size or tumor volume measured by MR imaging.

Pretreatment TLG but not SUV_{max} predicted survival in our study, which was in line with a previous report by Costelloe et al. (11). Although we hypothesized that TLG, by combining SUV and MTV, might be a more accurate predictor than either of them alone, TLG had a smaller AUC value and a lower RR in the survival analysis than MTV. The multivariate significance of TLG(45%) changed with the inclusion or omission of MTV(2.0) from the model, which can be explained by the dependence of TLG(45%) on MTV(2.0). From these results, we postulate that MTV is more important than tumor activity for predicting survival of osteosarcoma.

There is as yet no standardized method for evaluating the MTV or TLG. In the current study, however, a fixed SUV threshold of 2.0 could discriminate between the tumor and surrounding normal tissue. Moreover, MTV(2.0) was not only the closest correlate with MRV among the MTV values for different SUV thresholds but also independently predicted survival. The results of this study suggest that a fixed SUV threshold of 2.0 is suitable for measuring MTV, which reflects the biologically active tumor burden in patients with osteosarcoma.

Stratification of patients by the combined criteria of MTV and histologic response could provide more detailed prediction of clinical outcome than MTV or histologic response alone. It is noteworthy that the prognosis of patients with good histologic response and a large MTV is similar to that of patients with a poor histologic response and a small MTV. On the basis of these combined criteria, high-risk patients with osteosarcoma may need to consider more aggressive systemic chemotherapy than low- or intermediate-risk patients because they more easily relapse and develop metastases.

The present study has several limitations. First, we retrospectively analyzed a cohort of consecutively treated patients assembled by including only patients who met the inclusion criteria. Second, we studied a relatively small number of patients treated at

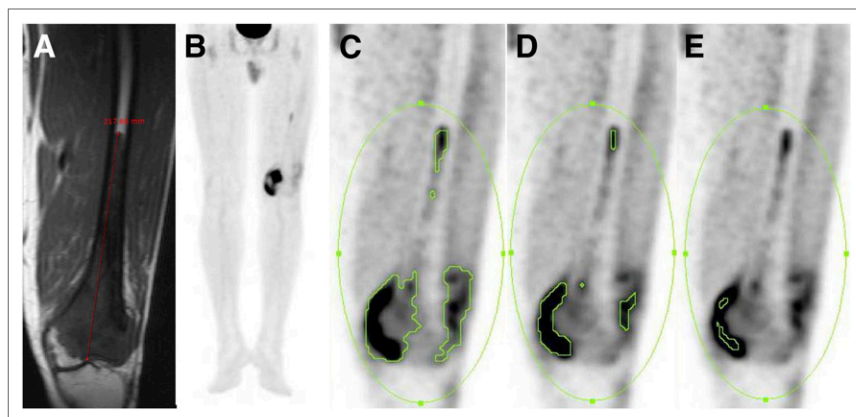


FIGURE 5. Pretreatment coronal unenhanced T1-weighted image (A), maximum-intensity-projection image of ^{18}F -FDG PET (B), and coronal ^{18}F -FDG PET images using different threshold SUVs (C–E) of a 36-y-old male with osteosarcoma of left femur. MRV (A), SUVmax, MTV(2.0) (C), MTV(2.5) (D), and MTV(45%) (E) were 691 mL, 10.6, 86 mL, 53 mL, and 16 mL, respectively. Although patient showed poor histologic response after completing neoadjuvant chemotherapy, he has been alive without recurrence or metastasis for 67 mo after surgery.

a single institution. Third, differences in SUV measurements among different PET scanners could limit the applicability of MTV(2.0) in clinical practice. Finally, not all suspected metastatic lesions were histologically confirmed, because patients with multiple metastases or poor general condition did not undergo surgical resection of suspected lesions. However, all possible clinical assays, including physical examination and imaging studies, were used to confirm the presence of metastatic osteosarcoma. Better-controlled prospective studies in a larger patient population are warranted to validate this promising strategy for improving the prediction of clinical outcomes of patients with osteosarcoma.

CONCLUSION

The MTV before neoadjuvant chemotherapy can accurately predict the clinical outcomes of patients with osteosarcoma. The combination of MTV and histologic response predicts survival more accurately than the histologic response alone. We anticipate that this new prognostic stratification based on MTV and histologic response will be important for guiding treatment decisions.

DISCLOSURE

The costs of publication of this article were defrayed in part by the payment of page charges. Therefore, and solely to indicate this fact, this article is hereby marked “advertisement” in accordance with 18 USC section 1734. This work was supported by Establishment of Center for PET Application Technology Development, Korea Institute of Radiological and Medical Sciences (KIRAMS), and by grants from the Ministry of Education, Science and Technology (50441-2013). No other potential conflict of interest relevant to this article was reported.

REFERENCES

- Ottaviani G, Jaffe N. The epidemiology of osteosarcoma. *Cancer Treat Res*. 2009;152:3–13.
- Bacci G, Picci P, Ferrari S, et al. Primary chemotherapy and delayed surgery for nonmetastatic osteosarcoma of the extremities: results in 164 patients preoperatively treated with high doses of methotrexate followed by cisplatin and doxorubicin. *Cancer*. 1993;72:3227–3238.

- Marcove RC, Mike V, Hajek JV, Levin AG, Hutter RV. Osteogenic sarcoma under the age of twenty-one: a review of one hundred and forty-five operative cases. *J Bone Joint Surg Am*. 1970;52:411–423.
- Greene FL. *AJCC Cancer Staging Manual*. 6th ed. New York, NY: Springer-Verlag; 2002:187–192.
- Enneking WF, Spanier SS, Goodman MA. A system for the surgical staging of musculoskeletal sarcoma. *Clin Orthop Relat Res*. 1980;Nov–Dec:106–120.
- Glasser DB, Lane JM, Huvos AG, Marcove RC, Rosen G. Survival, prognosis, and therapeutic response in osteogenic sarcoma: The Memorial Hospital experience. *Cancer*. 1992;69:698–708.
- Davis AM, Bell RS, Goodwin PJ. Prognostic factors in osteosarcoma: a critical review. *J Clin Oncol*. 1994;12:423–431.
- Franzius C, Sciuk J, Daldrop-Link HE, Jurgens H, Schober O. FDG-PET for detection of osseous metastases from malignant primary bone tumours: comparison with bone scintigraphy. *Eur J Nucl Med*. 2000;27:1305–1311.
- Im HJ, Kim TS, Park SY, et al. Prediction of tumour necrosis fractions using metabolic and volumetric ^{18}F -FDG PET/CT indices, after one course and at the completion of neoadjuvant chemotherapy, in children and young adults with osteosarcoma. *Eur J Nucl Med Mol Imaging*. 2012;39:39–49.
- Cheon GJ, Kim MS, Lee JA, et al. Prediction model of chemotherapy response in osteosarcoma by ^{18}F -FDG PET and MR imaging. *J Nucl Med*. 2009;50:1435–1440.
- Costelloe CM, Macapinlac HA, Madewell JE, et al. ^{18}F -FDG PET/CT as an indicator of progression-free and overall survival in osteosarcoma. *J Nucl Med*. 2009;50:340–347.
- Sato J, Yanagawa T, Dobashi Y, Yamaji T, Takagishi K, Watanabe H. Prognostic significance of ^{18}F -FDG uptake in primary osteosarcoma after but not before chemotherapy: a possible association with autocrine motility factor/phosphoglucose isomerase expression. *Clin Exp Metastasis*. 2008;25:427–435.
- Oh JR, Seo JH, Chong A, et al. Whole-body metabolic tumour volume of ^{18}F -FDG PET/CT improves the prediction of prognosis in small cell lung cancer. *Eur J Nucl Med Mol Imaging*. 2012;39:925–935.
- Yan H, Wang R, Zhao F, et al. Measurement of tumor volume by PET to evaluate prognosis in patients with advanced non-small cell lung cancer treated by non-surgical therapy. *Acta Radiol*. 2011;52:646–650.
- Chung MK, Jeong HS, Park SG, et al. Metabolic tumor volume of [^{18}F]-fluorodeoxyglucose positron emission tomography/computed tomography predicts short-term outcome to radiotherapy with or without chemotherapy in pharyngeal cancer. *Clin Cancer Res*. 2009;15:5861–5868.
- Hyun SH, Choi JY, Kim K, et al. Volume-based parameters of ^{18}F -fluorodeoxyglucose positron emission tomography/computed tomography improve outcome prediction in early-stage non-small cell lung cancer after surgical resection. *Ann Surg*. 2013;257:364–370.
- Larson SM, Erdi Y, Akhurst T, et al. Tumor treatment response based on visual and quantitative changes in global tumor glycolysis using PET-FDG imaging: the visual response score and the change in total lesion glycolysis. *Clin Positron Imaging*. 1999;2:159–171.
- Chen HH, Chiu NT, Su WC, Guo HR, Lee BF. Prognostic value of whole-body total lesion glycolysis at pretreatment FDG PET/CT in non-small cell lung cancer. *Radiology*. 2012;264:559–566.
- Kim MS, Cho WH, Song WS, Lee SY, Jeon DG. Time dependency of prognostic factors in patients with stage II osteosarcomas. *Clin Orthop Relat Res*. 2007;463:157–165.
- Carrle D, Bielack SS. Current strategies of chemotherapy in osteosarcoma. *Int Orthop*. 2006;30:445–451.
- Bielack SS, Kempf-Bielack B, Delling G, et al. Prognostic factors in high-grade osteosarcoma of the extremities or trunk: an analysis of 1,702 patients treated on neoadjuvant cooperative osteosarcoma study group protocols. *J Clin Oncol*. 2002;20:776–790.
- Carsi B, Rock MG. Primary osteosarcoma in adults older than 40 years. *Clin Orthop Relat Res*. 2002;397:53–61.
- Coffin CM, Lowichik A, Zhou H. Treatment effects in pediatric soft tissue and bone tumors: practical considerations for the pathologist. *Am J Clin Pathol*. 2005;123:75–90.

24. Biehl KJ, Kong FM, Dehdashti F, et al. ^{18}F -FDG PET definition of gross tumor volume for radiotherapy of non-small cell lung cancer: is a single standardized uptake value threshold approach appropriate? *J Nucl Med*. 2006;47:1808–1812.
25. Kim MS, Lee SY, Cho WH, et al. Initial tumor size predicts histologic response and survival in localized osteosarcoma patients. *J Surg Oncol*. 2008;97:456–461.
26. Bieling P, Rehan N, Winkler P, et al. Tumor size and prognosis in aggressively treated osteosarcoma. *J Clin Oncol*. 1996;14:848–858.
27. Cain KC, Lange NT. Approximate case influence for the proportional hazards regression model with censored data. *Biometrics*. 1984;40:493–499.
28. Therneau T, Grambsch P, Fleming T. Martingale-based residuals for survival models. *Biometrika*. 1990;77:147–160.
29. Lemeshow S, Hosmer DW Jr. A review of goodness of fit statistics for use in the development of logistic regression models. *Am J Epidemiol*. 1982;115:92–106.
30. Sauerbrei W, Schumacher M. A bootstrap resampling procedure for model building: application to the Cox regression model. *Stat Med*. 1992;11:2093–2109.
31. Harrell FE Jr, Lee KL, Mark DB. Multivariate prognostic models: issues in developing models, evaluating assumptions and adequacy, and measuring and reducing errors. *Stat Med*. 1996;15:361–387.
32. Jeon DG, Song WS. How can survival be improved in localized osteosarcoma? *Expert Rev Anticancer Ther*. 2010;10:1313–1325.
33. Goorin AM, Schwartzentruber DJ, Devidas M, et al. Presurgical chemotherapy compared with immediate surgery and adjuvant chemotherapy for nonmetastatic osteosarcoma: Pediatric Oncology Group Study POG-8651. *J Clin Oncol*. 2003;21:1574–1580.
34. Zhu D, Ma T, Niu Z, et al. Prognostic significance of metabolic parameters measured by ^{18}F -fluorodeoxyglucose positron emission tomography/computed tomography in patients with small cell lung cancer. *Lung Cancer*. 2011;73:332–337.
35. Mankin HJ, Hornicek FJ, Rosenberg AE, Harmon DC, Gebhardt MC. Survival data for 648 patients with osteosarcoma treated at one institution. *Clin Orthop Relat Res*. 2004;429:286–291.
36. Wunder JS, Bull SB, Aneliunas V, et al. MDR1 gene expression and outcome in osteosarcoma: a prospective, multicenter study. *J Clin Oncol*. 2000;18:2685–2694.
37. Broström LA, Strander H, Nilsson U. Survival in osteosarcoma in relation to tumor size and location. *Clin Orthop Relat Res*. 1982;167:250–254.
38. Szendroi M, Papai Z, Koos R, Illes T. Limb-saving surgery, survival, and prognostic factors for osteosarcoma: the Hungarian experience. *J Surg Oncol*. 2000;73:87–94.



The Journal of
NUCLEAR MEDICINE

Initial Metabolic Tumor Volume Measured by ^{18}F -FDG PET/CT Can Predict the Outcome of Osteosarcoma of the Extremities

Byung Hyun Byun, Chang-Bae Kong, Jihyun Park, Youngseok Seo, Ilhan Lim, Chang Woon Choi, Wan Hyeong Cho, Dae-Geun Jeon, Jae-Soo Koh, Soo-Yong Lee and Sang Moo Lim

J Nucl Med. 2013;54:1725-1732.

Published online: August 15, 2013.

Doi: 10.2967/jnumed.112.117697

This article and updated information are available at:

<http://jnm.snmjournals.org/content/54/10/1725>

Information about reproducing figures, tables, or other portions of this article can be found online at:

<http://jnm.snmjournals.org/site/misc/permission.xhtml>

Information about subscriptions to JNM can be found at:

<http://jnm.snmjournals.org/site/subscriptions/online.xhtml>

The Journal of Nuclear Medicine is published monthly.
SNMMI | Society of Nuclear Medicine and Molecular Imaging
1850 Samuel Morse Drive, Reston, VA 20190.
(Print ISSN: 0161-5505, Online ISSN: 2159-662X)

© Copyright 2013 SNMMI; all rights reserved.