

Changes in Radiation Dose with Variations in Human Anatomy: Larger and Smaller Normal-Stature Adults

Patrick M. Marine¹, Michael G. Stabin², Michael J. Fernald³, and Aaron B. Brill²

¹Aberdeen Proving Ground, Aberdeen, Maryland; ²Department of Radiology and Radiological Sciences, Vanderbilt University, Nashville, Tennessee; and ³University of Idaho, Moscow, Idaho

A systematic evaluation has been performed to study how specific absorbed fractions (SAFs) vary with changes in adult body size, for persons of different size but normal body stature.

Methods: A review of the literature was performed to evaluate how individual organ sizes vary with changes in total body weight of normal-stature individuals. On the basis of this literature review, changes were made to our easily deformable reference adult male and female total-body models. Monte Carlo simulations of radiation transport were performed; SAFs for photons were generated for 10th, 25th, 75th, and 90th percentile adults; and comparisons were made to the reference (50th) percentile SAF values. **Results:** Differences in SAFs for organs irradiating themselves were between 0.5% and 1.0%/kg difference in body weight, from 15% to 30% overall, for organs within the trunk. Differences in SAFs for organs outside the trunk were not greater than the uncertainties in the data and will not be important enough to change calculated doses. For organs irradiating other organs within the trunk, differences were significant, between 0.3% and 1.1%/kg, or about 8%–33% overall.

Conclusion: The differences are interesting and can be used to estimate how different patients' dosimetry might vary from values reported in standard dose tables.

Key Words: radiobiology/dosimetry; radiopharmaceuticals; other; anatomy; radiation dosimetry

J Nucl Med 2010; 51:806–811

DOI: 10.2967/jnumed.109.073007

For calculations of radiation dose estimates for radiopharmaceuticals, stylized anatomic models that were developed in the 1960s and 1970s have been used, with tables of specific absorbed fractions (SAFs) (1) and dose factors, perhaps implemented in standardized computer programs such as the MIRDOSE (2) and OLINDA/EXM code (3). The mathematic descriptions of the body and its organs were formulated on the basis of descriptive and schematic materials from general anatomy references. The goal was to

make the mathematic equations simple, thus minimizing computing time. Later improvements led to a family of stylized models, which include individuals of both sexes at several ages (4) and pregnant women (5). For several decades, these simplified models have been used for practical applications with the standard mathematic representations of the reference man (6) and other representative phantoms in radiation protection, nuclear medicine, and medical imaging (7,8). However, this stylized modeling approach has obvious shortcomings. Recently, more realistic models, based on imaging data from human subjects, have replaced the traditional, stylized models (9). The newer models include updated anatomic information from reference data on adults and children (10). These models use nonuniform rational B-splines (NURBS) to define body and organ surfaces, as developed by Dr. Paul Segars of Duke University (11). Figure 1 compares the traditional stylized models with the newer realistic models.

The phantoms used in standardized dose assessment are based on a median (i.e., 50th percentile) individual of a large population, for example, adult men or women or children of a particular age. We have now customized a series of phantoms to represent larger and smaller normal-stature individuals. In a separate investigation, we evaluated the influence of obesity on SAFs and dose factors in adults (results to be published separately). Here we describe phantoms that model different body types in a series of percentile height phantoms (10th, 25th, 75th, and 90th percentile adult men and women) based on a normal body mass index (BMI), to evaluate how SAFs may vary with height and weight differences across the human population. The dose to median individuals will continue to be the most widely used method in standardized dosimetry analyses, but an investigation of the variability in these dose values across typical nuclear medicine (and other) populations is important to an understanding of the uncertainty that may exist in these reported values (12).

MATERIALS AND METHODS

To create this percentile phantom series, we evaluated several literature sources. Dekaban (13) reported on variations in brain

Received Nov. 19, 2009; revision accepted Jan. 26, 2010.

For correspondence or reprints contact: Michael G. Stabin, Department of Radiology and Radiological Sciences, Vanderbilt University, 1161 21st Ave. S., Nashville, TN 37232-2675.

E-mail: michael.g.stabin@vanderbilt.edu

COPYRIGHT © 2010 by the Society of Nuclear Medicine, Inc.

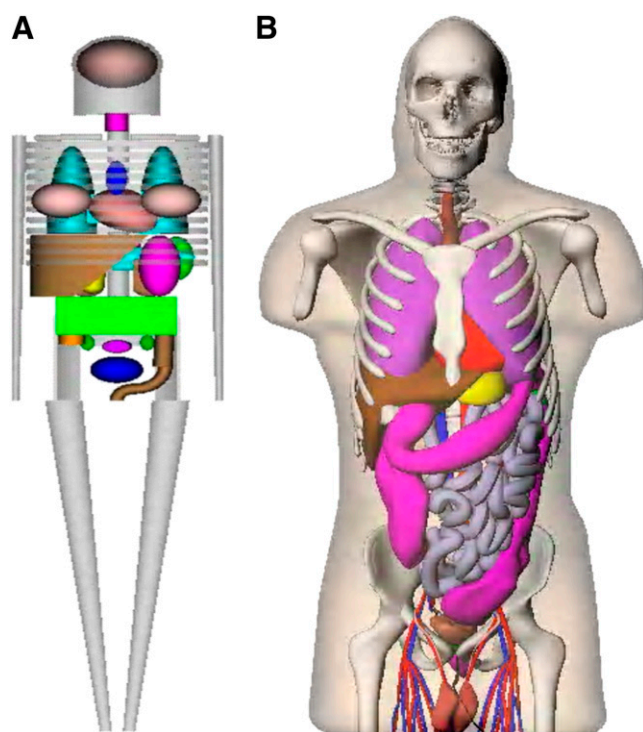


FIGURE 1. Comparison of traditional stylized (A) and realistic human body (B) models used in dose assessment.

weights with human body stature and body weight. Grandmaison et al. (14) provided information on variations in the mass of other body organs in relation to stature and BMI. Anthropometric data from the U.S. Department of Defense (DOD) (15) and Centers for

Disease Control (16,17) were also consulted to evaluate trends in the external measurements of large numbers of adults.

Initially, 50th percentile phantoms were constructed, reflecting the recommended values for organ and body masses (9) of the International Commission on Radiological Protection (ICRP) (10). The male and female adult NURBS phantoms were scaled to represent 25th and 75th percentile height phantoms of normal BMI using the anatomic data discussed earlier. The 3 height groupings of Grandmaison et al. (14) for both men and women approximated the 25th, 50th, and 75th percentile heights listed in the Centers for Disease Control and DOD data. Thus, the organ data were correlated to the height percentiles. Several assumptions were made at this point. Because the autopsy data were from nondiseased individuals, we assumed that the percentage difference in organ masses between the middle-height class of autopsy data and the lower and upper classes of autopsy data would be a true approximation of organ masses for the 25th and 75th percentile phantoms. A scaling factor was determined for each organ from this relative percentage change. For organs not represented in the autopsy data, such as intestines, the volume was approximated by a 5% increase or decrease from the reference values. The eyes and other head organs were scaled $\pm 3\%$ to stay consistent with the brain scaling.

Differences in the skeletal system relative to height were scaled to external reference markers. For example, the chest cavity and rib cage were scaled 3-dimensionally to the percentage difference in chest circumference. Once the 25th and 75th percentile phantoms were completed, additional 10th and 90th percentile phantoms were developed. Fewer autopsy data were available for these models, so a different methodology was used. The heights for the 10th and 90th percentile phantoms were taken from the DOD-HDBK-743A (15), and BMIs of 24 for the men and 23 for the women were assumed. The total mass of the individual phantom was then calculated. Scaling factors were then applied

TABLE 1. Selected Organ Masses (g) for Adult Male Models

Organ	10th percentile	25th percentile	50th ICRP reference	75th percentile	90th percentile
Adrenals	11.88	12.65	14	14.93	15.94
Brain	1,291	1,405	1,450	1,493	1,527
Esophagus	36.17	39.29	40	43.26	46.52
Eyes	13.6	14.82	15	15.16	16.82
Gallbladder	62.54	68.13	68	71.65	79.82
Stomach	341	370.8	400	419.1	443.7
Small intestine	595	648.7	650	682.3	779.4
Right colon	141	154	150	170	186
Left colon	133	146	150	159	174
Rectosigmoid	61.5	66.34	70	75.13	81.78
Heart	740	804.5	840	833	978.3
Kidneys	278.4	302.7	310	322.5	366.4
Liver	1,489	1,621	1,800	1,977	2,206
Lungs	1,068	1,162	1,200	1,344	1,502
Pancreas	127.5	138.2	140	144	161
Prostate	14.94	16.32	17	18	19.49
Salivary glands	76.76	82.63	85	88.11	92.22
Skeleton	8,289	8,990	10,500	10,781	11,800
Spleen	112.3	121.5	150	172	196.1
Testes	30.56	33.16	35	37.28	39.73
Thymus	21.68	23.3	25	26.53	27.76
Thyroid	18.42	19.99	20	20.54	21.04
Urinary bladder	45.05	48.63	50	53.72	59.02
Total body	63,560	69,170	73,000	76,790	91,720

TABLE 2. Selected Organ Masses (g) for Adult Female Models

Organ	10th percentile	25th percentile	50th percentile	75th percentile	90th percentile
Adrenals	11.57	12.51	13	13.7	15.33
Brain	1,150	1,243	1,300	1,317	1,361
Esophagus	32.41	34.7	35	37.75	40.78
Eyes	14.11	15.37	15	15.76	16.7
Gallbladder	50.32	54.63	56	61.66	67.73
Stomach	336.6	363.1	370	400.2	438.4
Small intestine	570.9	615.9	600	671.8	737.6
Right colon	133	142	145	151	164
Left colon	136	145	145	154	174
Rectosigmoid	63.7	69.16	70	76.25	84.52
Heart	546.9	588.8	620	628.6	686.4
Kidneys	229.1	246.7	276	306.8	334.7
Liver	1,150	1,238	1,400	1,556	1,703
Lungs	816.2	880	950	1,011	1,106
Ovaries	7.74	8.12	11	11.45	12.63
Pancreas	103.3	110.6	120	138.6	148.4
Salivary glands	65.27	69.9	70	74.9	78.24
Skeleton	5,849	6,284	7,800	7,470	8,240
Spleen	108.2	116.4	130	152.5	165.6
Thymus	17.37	18.74	20	20.83	22.56
Thyroid	16.27	17.49	17	17.59	18.21
Urinary bladder	36.03	39.5	40	44.5	48.03
Uterus	70.05	75.3	80	88.03	95.35
Total body	50,680	54,620	60,000	65,340	71,420

to increase or decrease each organ and bone so they would sum to the indicated mass of the 10th or 90th percentile phantom of the chosen BMI. Additionally, the thicknesses of the weight-bearing bones for the 90th percentile phantom were increased to compensate for the additional frame mass.

Once the phantoms had been scaled using the NURBS scaling tool, the file was voxelized and introduced into the Geant 4

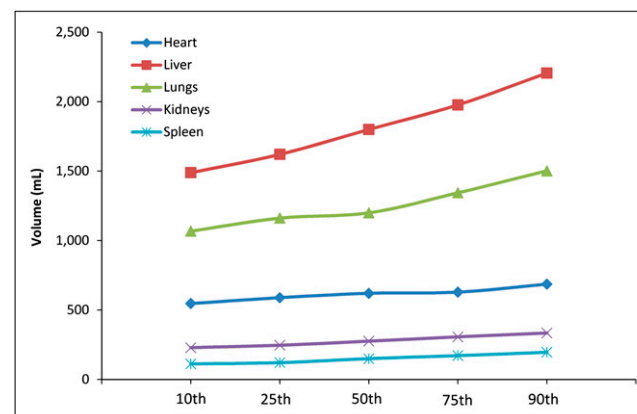
radiation transport code (18). SAFs were generated for most body organs, and comparisons were made to SAFs from both the Cristy–Eckerman phantoms and the 50th percentile NURB ICRP 89 phantoms. Additionally, the SAFs for the 10th, 25th, 75th, and 90th percentile phantoms were plotted together, and the trends were analyzed. Direct comparisons were made with SAF values of the 50th percentile ICRP 89 models (9). The percentage differences in SAF values across the percentiles were estimated for several organ pairs as arithmetic averages across all energies and expressed as absolute percentage differences and percentage differences per kilogram difference in phantom total body mass.

RESULTS

Tables 1 and 2 compare organ masses in the 10th, 25th, 50th, 75th, and 90th percentile adult men and women,

TABLE 3. Organ Density Values Used in Anthropomorphic Models

Organ	Density (g·cm ⁻³)
Adrenals	1.02
Salivary glands	1.045
Esophagus	1.045
Stomach	1.045
Small intestine	1.045
Large intestine	1.045
Rectosigmoid	1.045
Liver	1.045
Gallbladder	1.045
Pancreas	1.045
Brain	1.04
Heart	1.03
Eyes	1.026
Lungs	0.30
Skeleton	1.3
Spleen	1.06
Thymus	1.025
Thyroid	1.05
Kidneys	1.05
Bladder	1.03
Testes	1.04
Prostate	1.03
Ovaries	1.05
Uterus	1.05

**FIGURE 2.** Selected organ masses, adult male models.

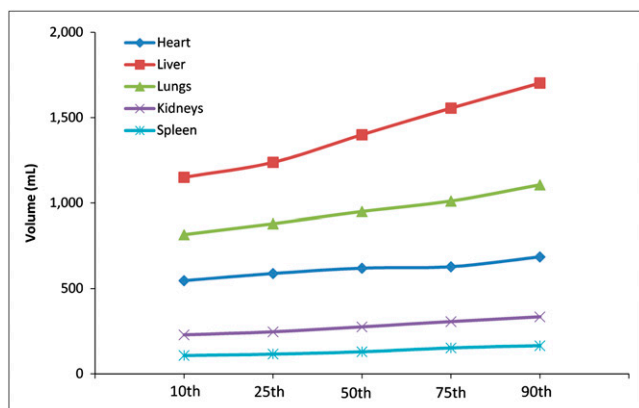


FIGURE 3. Selected organ masses, adult female models.

respectively. Table 3 shows tissue densities assumed in the simulations (10). Figures 2 and 3 show the difference in mass for 5 organs in the adult men and women, respectively, across percentile groups. Figures 4 and 5 show selected SAF plots for the male and female models, respectively, across percentiles. Tables 4–7 show the percentage differences—both absolute and body weight-based—for selected organ pairs from the 10th to the 90th percentile male and female phantoms.

DISCUSSION

The literature surveyed suggested that certain organs vary much more than others with changes in body size.

For example, according to the nondiseased autopsy data from Grandmaison et al. (14), the male spleen varied by about 20% between the 50th percentile height and the 75th percentile height, whereas the heart varied by only 5.8%. This difference may be due to functional reserve capacities, metabolic demands, or other variables. However, the autopsy sample set was relatively small (684 cases), so some statistical uncertainty is clearly associated with the data. In addition, the assignment of the 75th and 25th percentiles to the autopsy data was an approximation; with a larger set of raw nondiseased data, the assigned percentiles could be refined. Grandmaison et al. (14) also noted that although most organs correlate more strongly with height, some correlate more strongly with BMI, as the heart does. Because this effort was focused on normal-BMI individuals of differing heights, it was expected that given a constant BMI some organs would vary more than others with changes in height.

The SAFs generally decrease with increases in percentile size, because the organ masses are larger, and this difference is more important than the small reductions in SAFs that occur because of slightly greater organ separation. Differences in SAFs for an organ irradiating itself were between 0.5% and 1.0%/kg difference in body weight, from 15% to 30% overall, in the organs shown in Tables 4–7. Organs outside the main trunk area showed differences that were not perceptible within the uncertainties of the data; these organs may thus be considered less important than organs in the trunk when one is determining differences in calculated doses that result from the use of SAFs. For

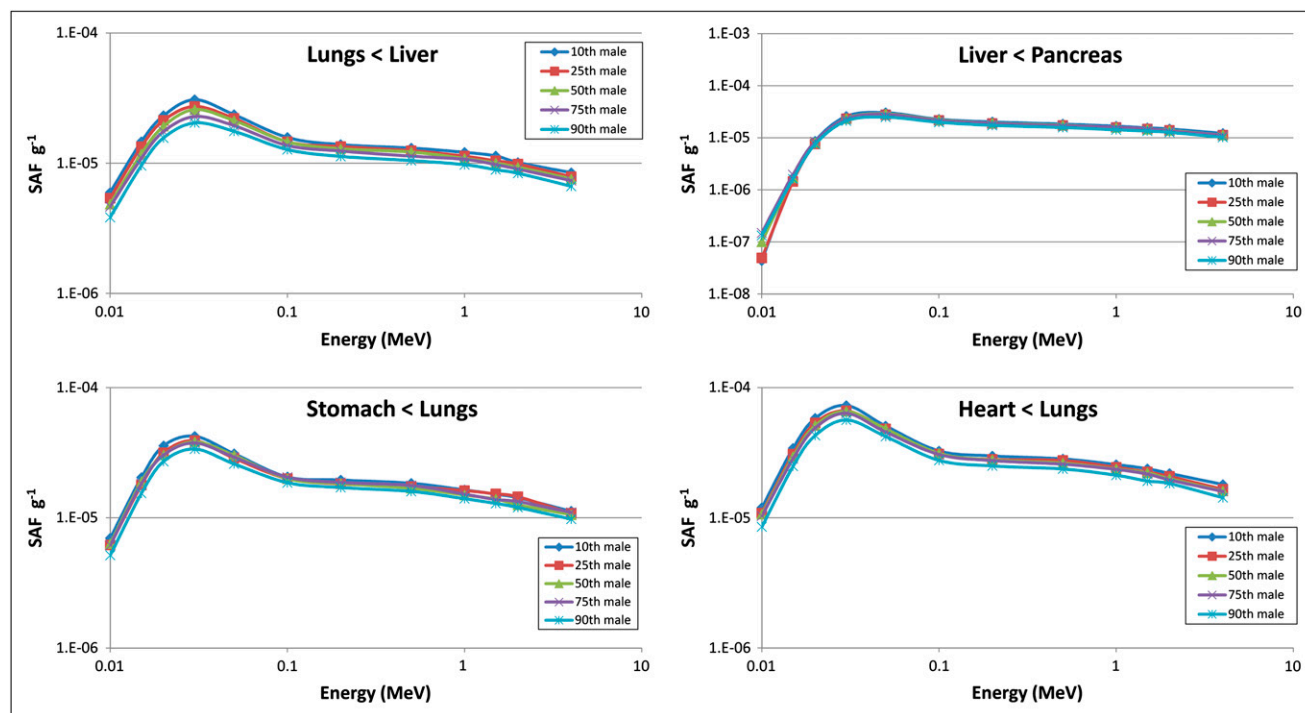


FIGURE 4. Selected SAF plots, adult male.

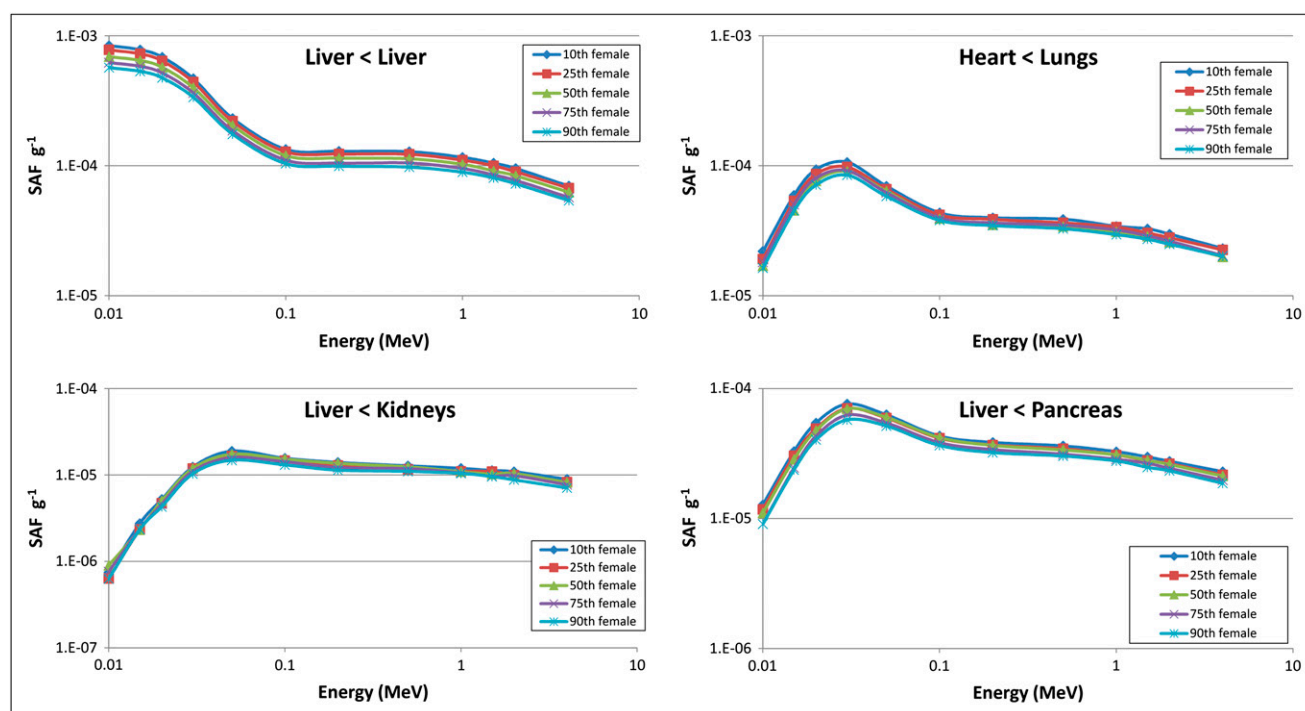


FIGURE 5. Selected SAF plots, adult female.

organs irradiating other organs in the trunk area, differences were between 0.3% and 1.1%/kg, or about 8%–33% overall. Given the uncertainties inherent in the analysis, numbers for all cases are roughly similar, and no significant differences were seen between values for the male and female models.

We also calculated for several cases the variation of the SAFs for each phantom from the 50th percentile numbers in each direction and also the difference between each set of phantom results, in steps from the 10th to the 90th percentile models (data not shown). The results generally varied in an approximately uniform manner from phantom to phantom, suggesting that the absolute difference per kilogram from the 10th to the 90th percentage models is fairly constant as the phantom size varies. This constancy is seen in the plots of the SAFs for the different phantoms and was the basis for our reporting the average difference per kilogram difference in total body mass.

Differences in SAFs with percentile height differences are only one variable contributing to the overall uncertainty in a radiopharmaceutical dose estimate. One of the major uncertainties in the evaluation of radiation doses for radiopharmaceuticals is the biokinetic model used to calculate the dose (12); this analysis suggested that overall uncertainties of up to a factor of 2 or more may be present in reported dose estimates, with a large degree of uncertainty being attributed to variations in individual biokinetics and organ sizes. This present study partially addresses the impact of the latter variable. If careful patient-specific dosimetry is performed, with attention paid to accurate data acquisition, analysis, and measurement of individual organ volumes, many of the biokinetic model uncertainties can be minimized, and the total uncertainty in the individual dose estimate can be reduced to perhaps $\pm 10\%$ – 20% (12). Without individualized dosimetry (which is routine in radiation therapy but not in diagnostic applications of radiopharmaceuticals), the variations shown here in SAFs

TABLE 4. Percentage Difference in SAFs per Kilogram Difference in Total Body Mass from 10th to 90th Percentile Phantoms, Adult Male

Organ	Kidneys	Liver	Lungs	Pancreas	Heart	Spleen
Kidneys	0.59	0.85	0.34	0.63	0.44	0.75
Liver	1.01	0.89	0.91	1.09	0.62	1.02
Lungs	0.46	0.74	0.69	0.52	0.62	0.21
Pancreas	0.47	1.08	0.65	0.52	0.39	0.72
Heart	0.40	0.45	0.66	0.51	0.62	0.39
Spleen	0.62	0.72	0.31	0.70	0.51	1.09

TABLE 5. Absolute Percentage Difference in SAFs from 10th to 90th Percentile Phantoms, Adult Male

Organ	Kidneys	Liver	Lungs	Pancreas	Heart	Spleen
Kidneys	17.7	25.4	10.2	18.9	13.1	22.6
Liver	30.4	26.7	27.4	32.8	18.6	30.7
Lungs	13.7	22.2	20.6	15.6	18.6	6.4
Pancreas	14.0	32.3	19.4	15.5	11.6	21.5
Heart	12.1	13.6	19.8	15.4	18.7	11.7
Spleen	18.7	21.7	9.3	21.1	15.4	32.6

TABLE 6. Percentage Difference in SAFs per Kilogram Difference in Total Body Mass from 10th to 90th Percentile Phantoms, Adult Female

Organ	Kidneys	Liver	Lungs	Pancreas	Heart	Spleen
Kidneys	0.77	0.58	0.37	0.57	0.47	0.50
Liver	0.56	0.86	0.61	0.68	0.26	0.74
Lungs	0.29	0.58	0.62	0.51	0.60	0.45
Pancreas	0.44	0.63	0.42	0.76	0.35	0.48
Heart	0.26	0.32	0.62	0.34	0.52	0.40
Spleen	0.50	0.64	0.48	0.51	0.36	0.87

contribute at most about 30% to the overall possible factor of 2 in uncertainties in the dose values. The changes in SAFs found here will thus be of minor importance to the evaluation of the average radiation doses patients are receiving from diagnostic radiopharmaceuticals, for which standardized dose estimates are applied from resources such as the ICRP Task Group Tables (8) and the RADAR Web site (<http://www.doseinfo-radar.com>) (19).

CONCLUSION

A systematic evaluation has been performed to study how SAF values vary with changes in adult body size, for persons of different sizes but normal stature. We have studied separately the effects of adult obesity on SAF values, and that study, and a paper that evaluates the actual change in dose estimates for several important pharmaceuticals, will be published separately. Within the trunk, differences in SAFs for organs irradiating themselves were between 0.5% and 1.0%/kg difference in body weight, from 15% to 30% overall. Organs outside the trunk showed changes that were not perceptible given the uncertainties of the data and so may be considered to be less important to variations in calculated doses that result from the use of SAFs. For organs irradiating other organs in the trunk, differences were between 0.3% and 1.1%/kg, or about 8%–33% overall. The differences are interesting and can help us understand how a patient's dosimetry might vary from values reported in standard dose tables (8,19).

REFERENCES

1. Snyder WS, Ford MR, Warner GG. *Estimates of Specific Absorbed Fractions for Photon Sources Uniformly Distributed in Various Organs of a Heterogeneous Phantom*. MIRD pamphlet no. 5, revised. New York, NY: Society of Nuclear Medicine; 1978.
2. Stabin MG. MIRDose: the personal computer software for use in internal dose assessment in nuclear medicine. *J Nucl Med*. 1996;37:538–546.

TABLE 7. Absolute Percentage Difference in SAFs from 10th to 90th Percentile Phantoms, Adult Female

Organ	Kidneys	Liver	Lungs	Pancreas	Heart	Spleen
Kidneys	23.0	17.3	11.0	17.0	14.2	14.9
Liver	16.8	25.8	18.3	20.5	7.9	22.1
Lungs	8.8	17.4	18.7	15.2	17.9	13.4
Pancreas	13.2	18.8	12.7	22.9	10.4	14.4
Heart	7.8	9.7	18.5	10.2	15.5	12.1
Spleen	15.1	19.2	14.3	15.2	10.7	26.0

3. Stabin MG, Sparks RB, Crowe E. OLINDA/EXM: the second-generation personal computer software for internal dose assessment in nuclear medicine. *J Nucl Med*. 2005;46:1023–1027.
4. Cristy M, Eckerman K. *Specific Absorbed Fractions of Energy at Various Ages from Internal Photon Sources*. ORNL/TM-8381 V1-V7. Oak Ridge, TN: Oak Ridge National Laboratory; 1987.
5. Stabin M, Watson E, Cristy M, et al. *Mathematical Models and Specific Absorbed Fractions of Photon Energy in the Nonpregnant Adult Female and at the End of Each Trimester of Pregnancy*. ORNL/TM-12907. Oak Ridge, TN: Oak Ridge National Laboratory; 1995.
6. International Commission on Radiological Protection (ICRP). *Report of the Task Group on Reference Man*. ICRP publication 23. Oxford, U.K.: Pergamon Press; 1975.
7. International Commission on Radiation Units and Measurements (ICRU). *Measurement of Dose Equivalents from External Photon and Electron Radiations*. ICRU report 47. Bethesda, MD: ICRU; 1992.
8. International Commission on Radiological Protection (ICRP). *Radiation Dose to Patients from Radiopharmaceuticals: Addendum 2 to ICRP Publication 53, Also Includes Addendum 1 to ICRP Publication 72*. ICRP publication 80. Oxford, U.K.: Pergamon Press; 1998.
9. Stabin MG, Emmons MA, Segars WP, Fernald MJ. The Vanderbilt University reference adult and pediatric phantom series. In: Xu XG, ed. *Handbook of Anatomical Models for Radiation Dosimetry*. Philadelphia, PA: Taylor & Francis, Inc.; 2009:337–346.
10. International Commission on Radiological Protection (ICRP). *Basic Anatomical and Physiological Data for Use in Radiological Protection: Reference Values*. ICRP publication 89. Oxford, U.K.: Elsevier Science, Ltd.; 2003.
11. Segars JP. *Development and Application of the New Dynamic NURBS-Based Cardiac-Torso (NCAT) Phantom* [Ph.D. dissertation]. Chapel Hill, NC: The University of North Carolina; 2001.
12. Stabin MG. Uncertainties in internal dose calculations for radiopharmaceuticals. *J Nucl Med*. 2008;49:853–860.
13. Dekaban AS. Changes in brain weights during the span of human life: relation of brain weights to body heights and body weights. *Ann Neurol*. 1978;4:345–356.
14. Grandmaison GL, Clairand I, Durigon M. Organ weight in 684 adult autopsies: new tables for a Caucasoid population. *Forensic Sci Int*. 2001;119:149–154.
15. U.S. Department of Defense (DOD). *Anthropometry of U.S. Military Personnel*. DOD-HDBK-743A. Washington, D.C.: DOD; 1991.
16. Ogden CL, Fryar CD, Carroll MD, Flegal KM. *Mean Body Weight, Height, and Body Mass Index, United States 1960–2002*. Advance Data from Vital and Health Statistics, no. 347. Hyattsville, MD: National Center for Health Statistics; 2004.
17. McDowell MA, Fryar CD, Hirsch R, Ogden CL. *Anthropometric Reference Data for Children and Adults: U.S. Population, 1999–2002*. Advance Data from Vital and Health Statistics, no. 361. Hyattsville, MD: National Center for Health Statistics; 2005.
18. Agostinelli S, Allison J, Amako K, et al. GEANT 4: a simulation toolkit. *Nucl Instrum Meth A*. 2003;506:250–303.
19. Stabin MG, Siegel JA. Physical models and dose factors for use in internal dose assessment. *Health Phys*. 2003;85:294–310.



The Journal of
NUCLEAR MEDICINE

Changes in Radiation Dose with Variations in Human Anatomy: Larger and Smaller Normal-Stature Adults

Patrick M. Marine, Michael G. Stabin, Michael J. Fernald and Aaron B. Brill

J Nucl Med. 2010;51:806-811.

Published online: April 15, 2010.

Doi: 10.2967/jnumed.109.073007

This article and updated information are available at:

<http://jnm.snmjournals.org/content/51/5/806>

Information about reproducing figures, tables, or other portions of this article can be found online at:

<http://jnm.snmjournals.org/site/misc/permission.xhtml>

Information about subscriptions to JNM can be found at:

<http://jnm.snmjournals.org/site/subscriptions/online.xhtml>

The Journal of Nuclear Medicine is published monthly.
SNMMI | Society of Nuclear Medicine and Molecular Imaging
1850 Samuel Morse Drive, Reston, VA 20190.
(Print ISSN: 0161-5505, Online ISSN: 2159-662X)

© Copyright 2010 SNMMI; all rights reserved.

The logo for the Society of Nuclear Medicine and Molecular Imaging (SNMMI) consists of the letters 'S', 'N', 'M', and 'I' arranged in a 2x2 grid. Each letter is white and set within a red square. To the right of this grid, the full name of the society is written in a smaller, black, sans-serif font.
SOCIETY OF
NUCLEAR MEDICINE
AND MOLECULAR IMAGING