

Deep-Inspiration Breath-Hold PET/CT of Lung Cancer: Maximum Standardized Uptake Value Analysis of 108 Patients

Tsuyoshi Kawano¹, Eiji Ohtake¹, and Tomio Inoue²

¹Division of Nuclear Medicine, Kanagawa Cancer Center, Yokohama, Japan; and ²Department of Radiology, Yokohama City University School of Medicine, Yokohama, Japan

Our aim was to compare the maximum standardized uptake value (SUV_{max}) between breath-hold (BH) PET/CT and free-breathing (FB) PET/CT. **Methods:** The features of phantom data were analyzed, after which a clinical study was performed. A total of 108 consecutive patients with lung cancer were examined using lutetium oxyorthosilicate (LSO)-based PET/CT. The patients were instructed to breathe freely during FB PET/CT. In BH PET/CT, the patients were instructed to hold their breath in the maximal inspiration position during the scout scan, for 10 s of the CT scan, and for as long as possible during the PET scan. BH time was recorded using a respiratory monitoring device. The %BH-index was defined as the percentage difference between SUV_{max} of FB PET and that of BH PET. Statistical analyses were performed using the following factors: %BH-index, age, body mass index, ¹⁸F-FDG dosage, blood glucose, BH time, lesion size, and location. **Results:** The highest %BH-index was 223.2. %BH-index in the lower lung area was significantly higher than that in the upper lung area (51.8 ± 49.5 vs. 16.9 ± 25.6 , respectively). Lesion volume and maximum diameter in the high-%BH-index group were significantly lower than those in the low-%BH-index group, with the use of a %BH-index cutoff value of 37.1. **Conclusion:** SUV_{max} of FB PET should not be taken as accurate, especially in the lower lung area and for small pulmonary lesions. BH PET/CT is expected to enable precise measurement of SUV_{max} and is thus recommended as part of the standard protocol for lung cancer.

Key Words: deep-inspiration breath-hold; PET/CT; maximum SUV; lutetium oxyorthosilicate; lung cancer

J Nucl Med 2008; 49:1223–1231
DOI: 10.2967/jnumed.107.049296

Whole-body ¹⁸F-FDG PET is an important imaging method in modern oncology for the diagnosis of disease in many different malignant tumors. Combined PET/CT systems enable the simultaneous acquisition of morphologic and

functional information. Fusion PET/CT images have affected the diagnosis of disease; however, image misregistration can occur in fusion PET/CT, particularly in the chest and abdomen, because of motion artifacts caused by respiration. CT is fast and enables flexible imaging protocols; many reports describe imaging protocols of the CT component of PET/CT (1–6), but a perfect match between PET and CT is impossible. The standard imaging protocol of the CT component of PET/CT is free breathing (FB) or a breath-hold (BH) in the normal expiratory position. However, the CT component of PET/CT during shallow breathing is reported to be inadequate for lung cancer imaging (7), and chest CT during deep inspiration is recommended for the thorough evaluation of patients for whom the detection of small pulmonary nodules is necessary (8,9). The PET component of PET/CT takes several minutes per bed position, and the resultant image comprises images averaged over many breathing cycles. Changes in the mean and maximum standardized uptake value (SUV_{max}) and mislocalization of lesions have been reported previously during normal respiratory movement (3,4,10). Evaluation of changes in SUV_{max} during respiratory movement is important because SUV_{max} is widely used in differentiating benign from malignant tumors (11), in determining the threshold levels of the gross tumor volume and tumor contour (12,13), and in monitoring of chemoradiation therapy.

The methodology of 4-dimensional PET/CT protocols has been previously reported (14–16), but the consensus on clinical protocols for respiratory-gated PET is not yet clearly defined. The examination is clinically impractical because of patients' breathing irregularities and lengthy acquisition and postprocessing times.

Recent articles refer to the methodology involved in acquiring BH PET/CT data at end inspiration; the practice of deep-inspiration BH PET/CT has been reported as feasible in the clinical setting (17,18). The use of a lutetium oxyorthosilicate (LSO) PET detector and 3-dimensional acquisition technology may enable a reduction in imaging times (19). As the previously described method (17,18) could not be implemented on our PET/CT scanner, the present study proposes an original BH PET/CT technique.

Received Nov. 26, 2007; revision accepted Apr. 24, 2008.

For correspondence or reprints contact: Tsuyoshi Kawano, Division of Nuclear Medicine, Kanagawa Cancer Center Nakao 1-1-2, Asahi-ku, Yokohama, 241-0815, Japan.

E-mail: kawanotsuyoshi@hotmail.com

COPYRIGHT © 2008 by the Society of Nuclear Medicine, Inc.

The features of phantom data were analyzed, after which a clinical study was performed.

The purpose of the present study was to compare the SUVmax of BH (SUVmaxBH) PET/CT with that of conventional FB (SUVmaxFB) PET/CT in 108 cases of lung cancer.

MATERIALS AND METHODS

Phantom Study

We used an International Electrotechnical Commission (IEC) body phantom set corresponding to the NU 2–2001 standard published by National Electrical Manufacturers Association (NEMA) (Fig. 1). The set consisted of a torso cavity, a removable lung insert, and 6 spheres (inner diameter, 10, 13, 17, 22, 28, and 37 mm) that can be filled as required. The torso cavity was filled with water, and the 6 spheres were filled with an ^{18}F -FDG solution in the same concentrations of radioactivity, with the concentrations varying as follows: 53, 13, and 7 kBq/mL. The PET/CT scan was performed using a single bed position. CT was used for CT-based attenuation correction. PET emission data were acquired in consecutive 1-s time frames for 15 min using the list-mode dynamic collection method. A total of 5 image frames ($n = 5$) were extracted from each of the 3-min, 1-min, 30-s, and 15-s acquisition times using the raw datasets from the 15-min scan. The same clinical reconstruction parameters as those described below were used for image reconstruction. Regions of interest (ROIs) were placed around each sphere, and the maximum value in the ROI was defined as the SUVmax. The means and SDs of SUVmax for the 5 images were calculated for all spheres in the various ^{18}F -FDG radioactivity concentrations and the various acquisition times. The coefficient of variation (CV) was defined as follows:

$$\text{CV} = \text{SD}/\text{mean} \times 100.$$

The percentage differences between the mean SUVmax of the 3-min PET scan (SUVmax, 3 min) and the mean SUVmax of the

1-min, 30-s, and 15-s PET scans (SUVmax, 1 min; SUVmax, 30 s; and SUVmax, 15 s, respectively) were defined as follows:

$$\% \text{Dif-index} = (\text{SUVmax 1 min, 30 s, 15 s} - \text{SUVmax 3 min})/\text{SUVmax 3 min} \times 100.$$

Clinical Study

Patients. From August 2006 to October 2007, we examined consecutive patients with a primary lesion of maximum diameter ranging from 10 to 40 mm for staging of lung cancer using clinical whole-body PET/CT. The protocol of this study was approved by the institutional review board, and informed consent was obtained from each patient. Diagnosis of the primary lesion was confirmed histopathologically for all patients. None of the patients had a history of chest surgical treatment. Patients with obvious hilar or pleural invasions were excluded from the study. Patients with lung tumors that showed low ^{18}F -FDG accumulation, as mentioned below, were excluded from the study. Patients who coughed, yawned, or spoke during the procedure; were deaf; or had dementia were excluded from the study. Thus, although 141 patients originally were approached to participate in this study, 33 patients (23%) were subsequently excluded. Among the reasons for exclusion, the most frequent reason was a short BH (lasting fewer than 29 s). Other patients were excluded for being uncooperative or because of an obvious mismatch between BH CT and BH PET. Consequently, 108 patients were evaluated in this study. Patient characteristics are summarized in Table 1.

Respiratory Monitoring Device

A respiratory gating system (AZ-733V; Anzai Medical Co. Ltd.), comprising the following components, was used for all patients. A respiratory sensor (an elasticized belt around the patient's abdomen) provides respiratory information by detecting changes in the patient's abdominal pressure. A sensor port amplifies and transmits analog signals, a wave deck receives and digitizes the signals to be sent to a personal computer, and an outputting gate signals the diagnostic imaging equipment or therapeutic irradiation equipment. Specific applications such as patient files, management of respiratory waves, setting of gate signals, and display of the respiratory waveform are installed on a personal computer. Management of the respiratory wave consists of acquisition, real-time display, storage, and reference.

Data Acquisition

All PET/CT studies were performed using an LSO-based whole-body PET/CT scanner (Biograph 16 HI-REZ; Siemens). The PET component of PET/CT has no septa, thus allowing 3-dimensional-only acquisitions with a field of view (FOV) of 585 mm in the

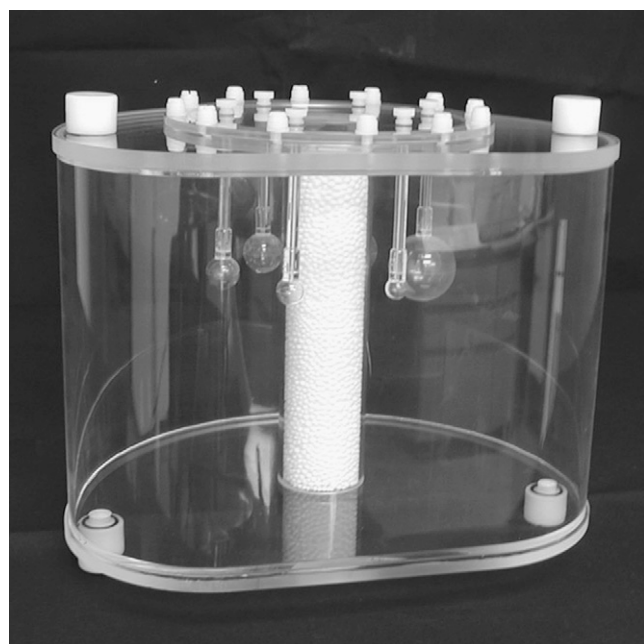


FIGURE 1. NEMA/IEC 2001 PET body phantom.

TABLE 1
Patient Characteristics

Characteristic	Mean \pm SD	Range
Patient age (y)	66.6 \pm 9.7	37–83
Weight (kg)	56.4 \pm 10.0	36–84
Height (cm)	159.5 \pm 8.3	141–174
BMI	22.1 \pm 3.0	15.8–30.9

The study comprised 62 men and 46 women.

transaxial direction and 162 mm in the axial direction. The intrinsic resolution is 4.2-mm full width at half maximum. The CT component of PET/CT corresponds to a 16-slice multi-detector-row spiral CT scanner (Sensation 16; Siemens) with a transverse FOV of 500 mm and an inplane spatial resolution greater than 1 mm. CT scan parameters consisted of the following: collimation, 16×1.5 mm; gantry rotation time, 500 ms; tube voltage, 120 kV; effective tube current, 50 mAs, with online tube current modulation (CARE Dose4D; Siemens); and table feed, 18 mm/rotation.

^{18}F -FDG (FDGscan Injectable; Nihon Medi-Physics Co. Ltd.) was purchased via a delivery system. ^{18}F -FDG dose per body weight cannot be determined under this delivery system because the delivery of ^{18}F -FDG occurs at 3 set times a day and there is decay from calibration time. All patients fasted for at least 6 h before PET/CT. Sixty minutes after intravenous administration of ^{18}F -FDG (mean dosage, 4.64 MBq/kg; range, 2.17–9.53 MBq/kg), all patients were positioned supine on the imaging table with their arms by their sides and were instructed to breathe freely. Whole-body PET/CT was acquired for each patient from the top of the skull to the middle of the thigh, with 3 min per bed position. The conventional whole-body PET/CT scan was then evaluated to determine whether the pulmonary lesion was visible on the PET images. Patients with visible ^{18}F -FDG accumulation in target pulmonary lesions on the whole-body PET scan participated in the present study; patients with pulmonary lesions visualized at either SUVmax of less than 2.0 or ^{18}F -FDG accumulation of less than 5 kBq/mL measured on whole-body PET were excluded.

Both FB PET/CT and BH PET/CT were performed as additional scans 110 min after intravenous administration of ^{18}F -FDG. A conventional FB PET/CT scan with a single bed position was performed with normal respiration during an initial scout scan, CT, and PET. An initial scout scan was performed to determine whether the imaging field included a target pulmonary lesion, after which a 10-s chest CT scan was performed. PET emission data for a single bed position were acquired for at least 3 min using the list-mode dynamic collection method. Three-minute image frames were extracted from the raw sinogram datasets after FB PET.

BH PET/CT was then performed for a single bed position with the patient instructed to hold his or her breath in maximal inspiratory position during both the initial scout and the 10-s CT scans; during the PET scan, patients were asked to hold their breath in maximal inspiratory position motionlessly, as long as possible, with the respiratory monitoring device fixed. After an initial scout scan was taken to determine whether the imaging field included the target pulmonary lesion, a chest CT scan of approximately 10 s was performed. PET emission data for a single bed position were acquired in consecutive 1-s time frames using the list-mode dynamic collection method, until the patient could no longer hold his or her breath. The time from the beginning to the end of steady motionless BH was recorded by referring to the real-time display of the respiratory monitoring device. Image frames corresponding to the recorded BH time were extracted from the raw sinogram datasets after dynamic BH PET. Datasets from early and late periods of recorded BH time were not used (Fig. 2).

Image Reconstruction and Analysis

CT images were used for anatomic landmarking. CT-based attenuation correction used 700-mm extended FOV technology (Auto AC; Siemens). The same clinical reconstruction parameters were used for both the FB PET and BH PET images. All PET images were reconstructed using iterative algorithms (Fourier rebinning

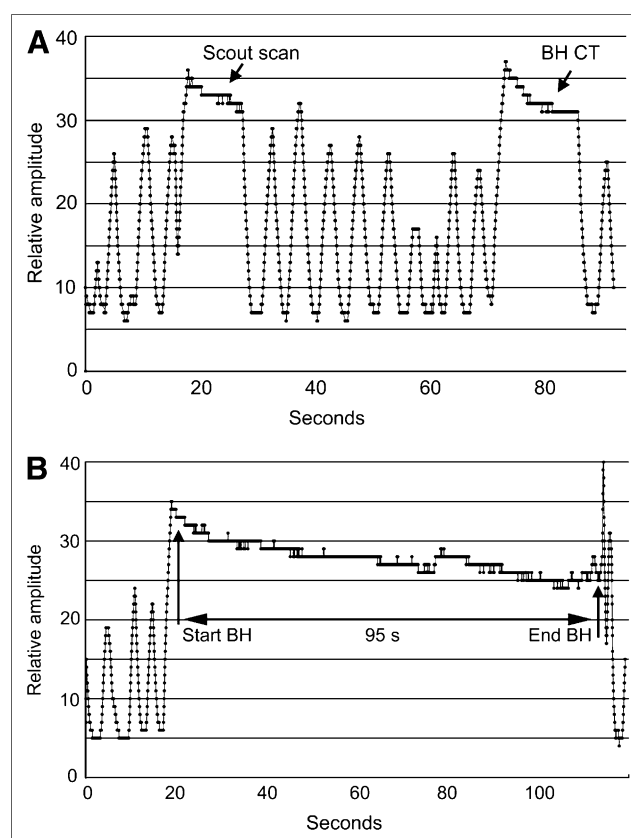


FIGURE 2. (A) Breathing signal of patient during scout scan and BH CT. Patient was instructed to hold breath in maximal inspiratory position during scout scan and for 10 s during BH CT scan. (B) Breathing signal during BH PET scan. Patient was instructed to hold breath in maximal inspiratory position as long as possible during PET scan. Time from beginning to end of steady motionless BH was recorded as 95 s.

plus attenuation-weighted ordered-subset expectation maximization, 2 iterations, 8 subsets, 5-mm gaussian filter) with CT-based attenuation correction. The data were reconstructed with a 168×168 matrix and 2-mm slice thickness. All PET and CT images were transformed to a Leonardo workstation (e-soft; Siemens), from which fusion PET/CT images were constructed.

ROIs were placed around the pulmonary lesions, and the maximum value in the ROI was defined as SUVmax. SUVmax was obtained for all lesions revealed on FB PET and BH PET. If multiple lesions were detected, the lesion with the highest SUVmax was used. The maximum diameters of all lesions were measured from the transaxial BH CT images or multiplanar reconstructed BH CT images. Lesion volumes were obtained by multiplying the area with maximum diameter on the transaxial BH CT image by the z -axis length on the BH CT image.

Data Analysis and Statistical Evaluation

The percentage difference between SUVmaxFB PET and SUVmaxBH PET was defined as follows:

$$\% \text{BH-index} = \frac{(\text{SUVmaxBH} - \text{SUVmaxFB})}{\text{SUVmaxFB} \times 100}.$$

A count recovery coefficient was not applied in the present SUV analysis.

Analyses were performed using statistical analysis software (StatView [Windows; Microsoft]; SAS Institute Inc.). The nonparametric Mann–Whitney *U* test was used to evaluate differences in the following factors: patient age, body mass index (BMI), ^{18}F -FDG dosage, BH time, lesion maximum diameter and %BH-index for each group (upper lung area, segments S1–S6; lower lung area, segments S7–S10; upper lobe, segments S1–S3; and middle-to-lower lobe, segments S4–S10), left versus right lung, and sex. Differences in lesion volume and maximum diameter in the high-%BH-index group and the low-%BH-index group were evaluated using a nonparametric Mann–Whitney *U* test. Correlations among %BH-index, patient age, BMI, ^{18}F -FDG dosage, blood glucose level, BH time, lesion volume, and maximum diameter were assessed using an analysis of correlation coefficients. The correlation between SUVmaxFB and SUVmaxBH was also assessed.

RESULTS

Phantom Study

The results of the phantom study are shown in Tables 2–4. The degree of activity underestimation was higher in smaller spheres, and the degree of activity overestimation was higher in larger spheres, increasing with shorter acquisition times in both cases.

Clinical Study

Data for 108 patients with 108 primary pulmonary lesions were evaluated. The mean radiation effective doses that patients received from whole-body PET/CT, FB CT, and BH CT were 7.66, 1.30, and 1.16 mSv, respectively. All of the pulmonary lesions were clearly visualized in FB PET and BH PET images. The means and SDs for SUVmaxFB and SUVmaxBH were 8.06 ± 5.15 and 9.78 ± 5.76 , respectively. The mean and SD of the maximum diameters

of the lesions was 2.52 ± 0.73 cm, ranging from 1.2 to 4.0 cm. The mean and SD of lesion volume was 14.43 ± 12.33 cm³, ranging from 1.1 to 65.1 cm³. The mean and SD BH time was 54.2 ± 20.8 s, ranging from 30 to 125 s. The mean and SD %BH-index was 26.6 ± 37.2 , ranging from –10.1 to 223.2.

We assigned the %BH-index to 4 groups: upper lung area, lower lung area, upper lobe, and middle-to-lower lobe. For the upper lung area ($n = 78$) and lower lung area ($n = 30$), the %BH-index in the lower lung area was significantly higher than that in the upper lung area ($P < 0.0001$) (Table 5). For the upper lobe ($n = 50$) and middle-to-lower lobe ($n = 58$), the %BH-index in the middle-to-lower lobe was significantly higher than that in the upper lobe ($P < 0.0001$) (Table 6). No significant difference was observed in the %BH-index between the bilateral lungs or sex.

Lesion volume and maximum diameter were assigned to 2 groups, the high-%BH-index group ($n = 24$) and the low-%BH-index group ($n = 84$), using a %BH-index cutoff value of 37.1. Lesion volume and maximum diameter in the high-%BH-index group were significantly lower than those in the low-%BH-index group ($P = 0.0019$ and $P = 0.0032$, respectively) (Table 7).

A weak inverse relationship was observed between patient age and BH time ($r = -0.356$, $P = 0.0001$). A weak inverse relationship was also observed between %BH-index and lesion maximum diameter ($r = -0.229$, $P = 0.0171$) (Fig. 3). A significant relationship was observed between SUVmaxFB and SUVmaxBH ($r = 0.937$, $P < 0.0001$) (Fig. 4); however, the factors of patient age, BMI, ^{18}F -FDG dosage, blood glucose level, and BH time showed no relationship with %BH-index.

TABLE 2
Results of Phantom Study for an ^{18}F -FDG Concentration of 53 kBq/mL ($n = 5$)

Acquisition time	Parameter	Sphere size (mm)					
		10	13	17	22	28	37
15 min		25,405	40,098	50,275	52,466	53,638	53,692
3 min	Mean (Bq/mL)	24,690	40,029	50,169	52,657	54,687	54,788
	SD	777	804	1301	1048	1254	627
	CV	3.15	2.01	2.59	1.99	2.29	1.14
1 min	Mean (Bq/mL)	23,591	38,981	50,515	52,674	55,621	56,965
	SD	1,339	2,207	2,064	687	741	340
	CV	5.68	5.66	4.09	1.30	1.33	0.60
	%Dif-index*	–4.45	–2.62	0.69	0.03	1.71	3.97
30 s	Mean (Bq/mL)	20,859	39,076	50,331	54,196	57,462	59,467
	SD	1,422	2,380	2,165	1,296	1,156	1,264
	CV	6.82	6.09	4.30	2.39	2.01	2.13
	%Dif-index*	–15.52	–2.38	0.32	2.92	5.07	8.54
15 s	Mean (Bq/mL)	16,346	37,668	50,078	55,989	58,993	62,000
	SD	2,900	3,210	4,167	2,930	3,451	2,054
	CV	17.74	8.52	8.32	5.23	5.85	3.31
	%Dif-index*	–33.79	–5.90	–0.18	6.33	7.87	13.16

*%Dif-index = percentage difference compared with 3-min acquisition.

TABLE 3
Results of Phantom Study for an ^{18}F -FDG Concentration of 13 kBq/mL ($n = 5$)

Acquisition time	Parameter	Sphere size (mm)					
		10	13	17	22	28	37
15 min		6,060	10,662	11,873	12,923	12,715	13,041
3 min	Mean (Bq/mL)	5,570	10,477	12,019	13,049	13,275	13,887
	SD	144	402	398	320	312	289
	CV	2.58	3.84	3.31	2.45	2.35	2.08
1 min	Mean (Bq/mL)	4,510	9,855	11,705	13,174	13,993	14,857
	SD	889	512	474	1048	80	428
	CV	19.71	5.20	4.05	7.96	0.57	2.88
	%Dif-index*	-19.03	-5.94	-2.61	0.95	5.41	6.99
30 s	Mean (Bq/mL)	†	9,356	11,947	13,133	14,901	15,822
	SD		1,233	990	1,101	695	475
	CV		13.18	8.29	8.39	4.67	3.00
	%Dif-index*		-10.70	-0.60	0.64	12.25	13.93
15 s	Mean (Bq/mL)	†	6,670	10,507	13,317	16,593	17,737
	SD		609	692	953	1,301	621
	CV		9.13	6.58	7.16	7.84	3.50
	%Dif-index*		-36.33	-12.58	2.05	25.00	27.72

*%Dif-index = percentage difference compared with 3-min acquisition.

†Difficult to distinguish from background noise.

DISCUSSION

The BH technique in CT has been widely investigated for radiotherapy in treatment of the lungs (20,21), and deep-inspiration BH PET/CT has recently been reported to be feasible in the clinical setting (17,18). Because the specifications of the PET/CT system at our institute do not correspond to those of a recently reported protocol (17,18), we focused on the single-BH technique during PET emission to enable a reduction in examination time and to

optimize image fusion and SUV analysis. We propose a BH PET/CT protocol in which the patient is instructed to hold his or her breath in the maximal inspiratory position during the initial scout scan, for 10 s during the CT scan, and during the PET scan for as long as possible. We used a respiratory monitoring device for this study. The advantage of using this system was the ability to monitor the patients' actual breathing conditions and to determine the time from the beginning to the end of motionless breath-holding.

TABLE 4
Results of Phantom Study for an ^{18}F -FDG Concentration of 7 kBq/mL ($n = 5$)

Acquisition time	Parameter	Sphere size (mm)					
		10	13	17	22	28	37
15 min		2,881.29	4,896.79	5,548.12	6,111.37	6,370.27	6,500.82
3 min	Mean (Bq/mL)	†	4,670	5,504	6,297	6,640	7,352
	SD		155	257	448	174	273
	CV		3.32	4.66	7.12	2.62	3.71
1 min	Mean (Bq/mL)	†	4,517	5,547	6,602	7,282	8,240
	SD		428	211	214	704	530
	CV		9.48	3.81	3.25	9.67	6.44
	%Dif-index*		-3.29	0.78	4.85	9.67	12.07
30 s	Mean (Bq/mL)	†	2,501	4,986	6,792	8,486	9,469
	SD		745	761	683	1,232	426
	CV		29.78	15.26	10.06	14.52	4.50
	%Dif-index*		-46.45	-9.43	7.86	27.80	28.79
15 s	Mean (Bq/mL)	†	†	4,384	5,544	7,327	9,275
	SD			630	709	1,208	868
	CV			14.36	12.79	16.49	9.36
	%Dif-index*			-20.35	-11.96	10.34	26.15

*%Dif-index = percentage difference compared with 3-min acquisition.

†Difficult to distinguish from background noise.

TABLE 5

Differences Between Upper Lung Area and Lower Lung Area

Characteristic	Upper lung area (n = 78)*	Lower lung area (n = 30)†	P
Patient age	66.5 ± 9.8	66.9 ± 9.9	NS
BMI	22.2 ± 3.1	21.7 ± 2.5	NS
¹⁸ F-FDG dosage (MBq/kg)	4.66 ± 1.48	4.60 ± 1.45	NS
BH time (s)	56.1 ± 22.2	49.3 ± 15.7	NS
Maximum diameter (cm)	2.61 ± 0.75	2.28 ± 0.63	0.0410
SUVmaxFB	9.12 ± 5.48	5.32 ± 2.74	0.0003
SUVmaxBH	10.52 ± 6.19	7.85 ± 3.91	NS
%BH-index	16.9 ± 25.6	51.8 ± 49.5	<0.0001

*Upper lung area includes S1, S2, S1 + 2, S3, S4, S5, S4 + 5, and S6.

†Lower lung area includes S7, S8, S9, and S10.

NS = not statistically significant ($P > 0.05$).

Data are mean ± SD.

Some patients were unable to produce motionless inspiratory action as instructed because of misunderstanding, strain, laziness, sleepiness, or confusion. We were immediately alerted to breath-holding problems by observing the real-time display of the respiratory monitoring device. This system also enabled us to exclude patients whose data were inadequate for such reasons as having a short BH (lasting fewer than 29 s), being uncooperative, coughing, yawning, speaking, being deaf, and having dementia. The additional time patients are required to spend in the scanner for both FB PET/CT and BH PET/CT was about 10 min, including breathing instruction. The postprocessing time was approximately 5 min because of parallel processing and enabled

TABLE 6

Differences Between Upper Lobe and Middle-to-Lower Lobe

Characteristic	Upper lobe (n = 50)*	Middle-to-lower lobe (n = 58)†	P
Patient age	66.9 ± 10.0	66.4 ± 9.7	NS
BMI	22.3 ± 3.2	21.9 ± 2.8	NS
¹⁸ F-FDG dosage (MBq/kg)	4.67 ± 1.47	4.61 ± 1.47	NS
BH time (s)	59.5 ± 25.0	49.7 ± 15.1	NS
Maximum diameter (cm)	2.56 ± 0.78	2.48 ± 0.69	NS
SUVmaxFB	8.38 ± 5.15	7.79 ± 5.18	NS
SUVmaxBH	9.28 ± 5.56	10.21 ± 5.93	NS
%BH-index	11.4 ± 13.9	39.6 ± 45.3	<0.0001

*Upper lobe area includes S1, S2, S1 + 2, and S3.

†Middle-to-lower lobe area includes S4, S5, S4 + 5, S6, S7, S8, S9, and S10.

NS = not statistically significant ($P > 0.05$).

Data are mean ± SD.

TABLE 7

Differences Between High-%BH-Index Group and Low-%BH-Index Group

Characteristic	High %BH-index group* (n = 24)	Low %BH-index group† (n = 84)	P
Patient age	69.7 ± 6.1	65.7 ± 10.4	NS
BMI	22.5 ± 3.0	22.0 ± 3.0	NS
¹⁸ F-FDG dosage (MBq/kg)	4.66 ± 1.43	4.63 ± 1.48	NS
BH time (s)	51.5 ± 17.6	55.0 ± 21.7	NS
SUVmaxFB	5.39 ± 2.22	8.83 ± 5.50	0.0076
SUVmaxBH	9.51 ± 3.79	9.86 ± 6.22	NS
Volume (cm ³)	7.79 ± 6.13	16.33 ± 13.01	0.0019
Maximum diameter (cm)	2.13 ± 0.57	2.63 ± 0.74	0.0032

*High-%BH-index group: higher than 37.

†Low-%BH-index group: lower than 37.

NS = not statistically significant ($P > 0.05$).

Data are mean ± SD.

the scanner to examine the next patient. The advantages of this proposed protocol were its short acquisition time, high probability of technical success in completing the study in cooperative patients, and simple postprocessing. For radiation dose, the additional effective dose of BH CT was about 15% of whole-body PET/CT, which is considered acceptable for routine clinical examinations.

Our clinical study addressed the %BH-index of consecutive patients with various lung tumors in the entire lung fields bilaterally. The %BH-index showed an unavoidable scatter of values; thus, the %BH-index might have been affected by the following factors: BH time, lesion size, lesion location, ¹⁸F-FDG dosage, patient age, patient sex, and BMI, among others. We observed a significantly high %BH-index in the lower lung

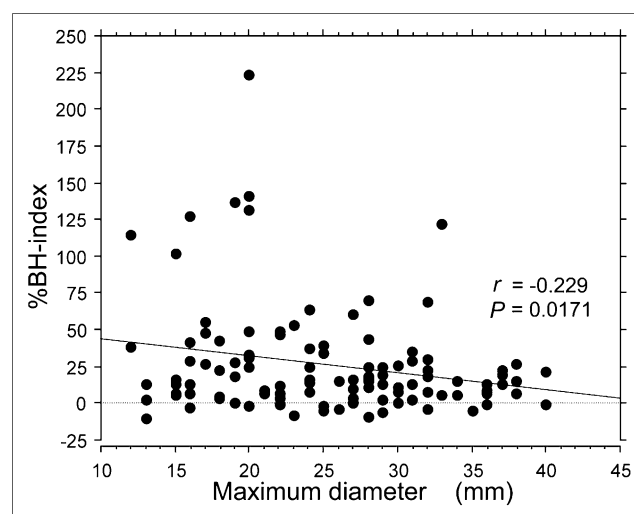


FIGURE 3. Graph of regression analysis between %BH-index and maximum lesion diameter. Weak inverse relationship was observed.

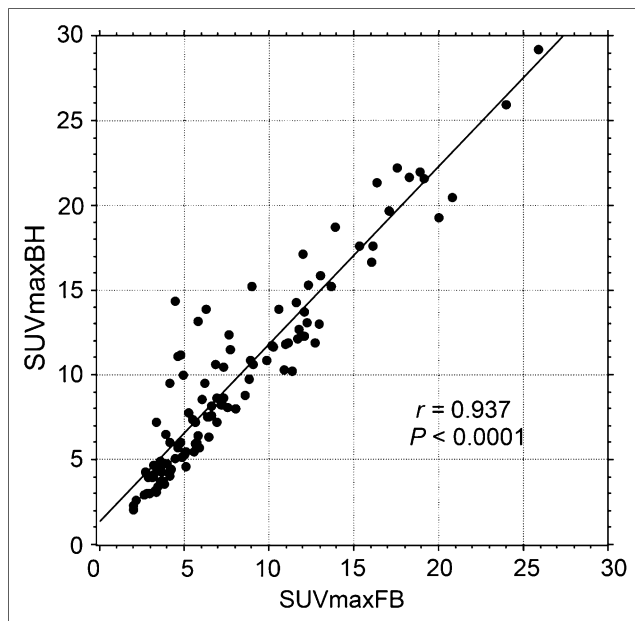


FIGURE 4. Graph of regression analysis between SUVmaxFB and SUVmaxBH. Significant relationship was observed.

area and middle-to-lower lobe (Tables 5 and 6). This result indicates that the movement of the diaphragm synchronously influences pulmonary movement during the breathing cycle; the depth, cycle speed, and waveform of respiratory motion are the factors that lead to a reduction in the SUVmax of FB PET and cause blurring of the PET images.

Although the formula for lesion volume used in this study did not give an accurate volume, the formula was applied as a simple alternative for estimating lesion volume. In the pre-

sent study, lesion volume and maximum diameter in the high-%BH-index group were significantly lower than those in the low-%BH-index group (Table 7). In FB PET images, the area of ^{18}F -FDG accumulation tended to exceed the contour of the lesion on CT images, indicating blurred ^{18}F -FDG accumulation around the lung tumor, especially in small tumors (Fig. 5). However, large lesions do not always show ^{18}F -FDG blurring around the lung tumor. This phenomenon may rely on the uniformity of ^{18}F -FDG accumulation, especially in large tumors, because of factors such as hypoxia, necrosis, and cavitation (Fig. 6). Throughout the duration of the breathing cycle, within areas of heterogeneous ^{18}F -FDG accumulation each pixel with a maximum ^{18}F -FDG accumulation is averaged while moving in a complicated manner. The lesion size, shape, and nonuniform distribution of ^{18}F -FDG activity within the tumor are also factors that reduce the SUVmax of FB PET, particularly in large tumors.

Theoretically, BH PET/CT achieves ideal image fusion; however, clinically, several patients showed misregistration in fusion PET/CT images. The extent of lung inspiration levels differs between BH CT and BH PET. To avoid this misregistration in fusion PET/CT images, it is important that patients hold their breath at the same level of inspiration. A previous report documented that SUV measures are affected by the degree of mismatch between CT and PET datasets (3). In our SUVmax analysis, we eliminated patients with obvious mismatch. As a result, because the depth of inspiration was measured using a respiratory monitoring device, almost all patients showed a perfect match between BH CT and BH PET. However, the mismatch between FB CT and FB PET was disregarded because FB PET/CT was the clinically used standard protocol.

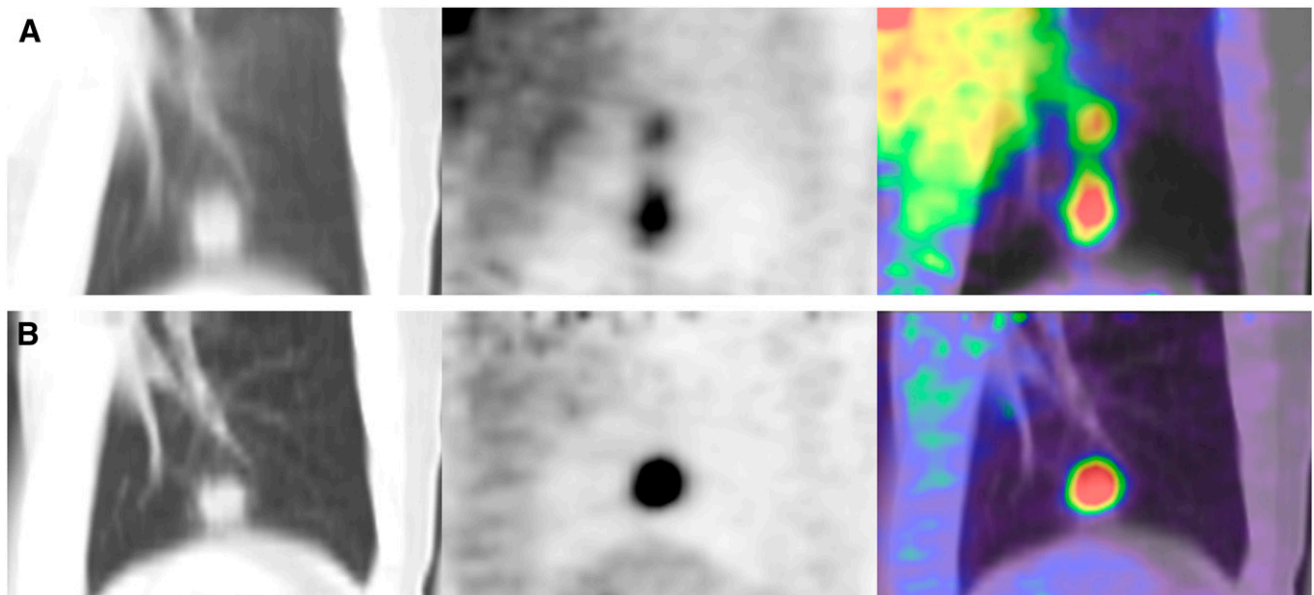


FIGURE 5. Man (63 y) with lung cancer in left lower lobe: coronal FB PET/CT (A) and coronal BH PET/CT (B). Maximum lesion diameter was 20 mm and BH time was 95 s. SUVmax for FB PET and BH PET was 4.44 and 14.35, respectively. %BH-index was 223.2. Blurring of ^{18}F -FDG accumulation was more apparent in fusion FB PET/CT than in fusion BH PET/CT. Complete superimposition was noted in fusion BH PET/CT.

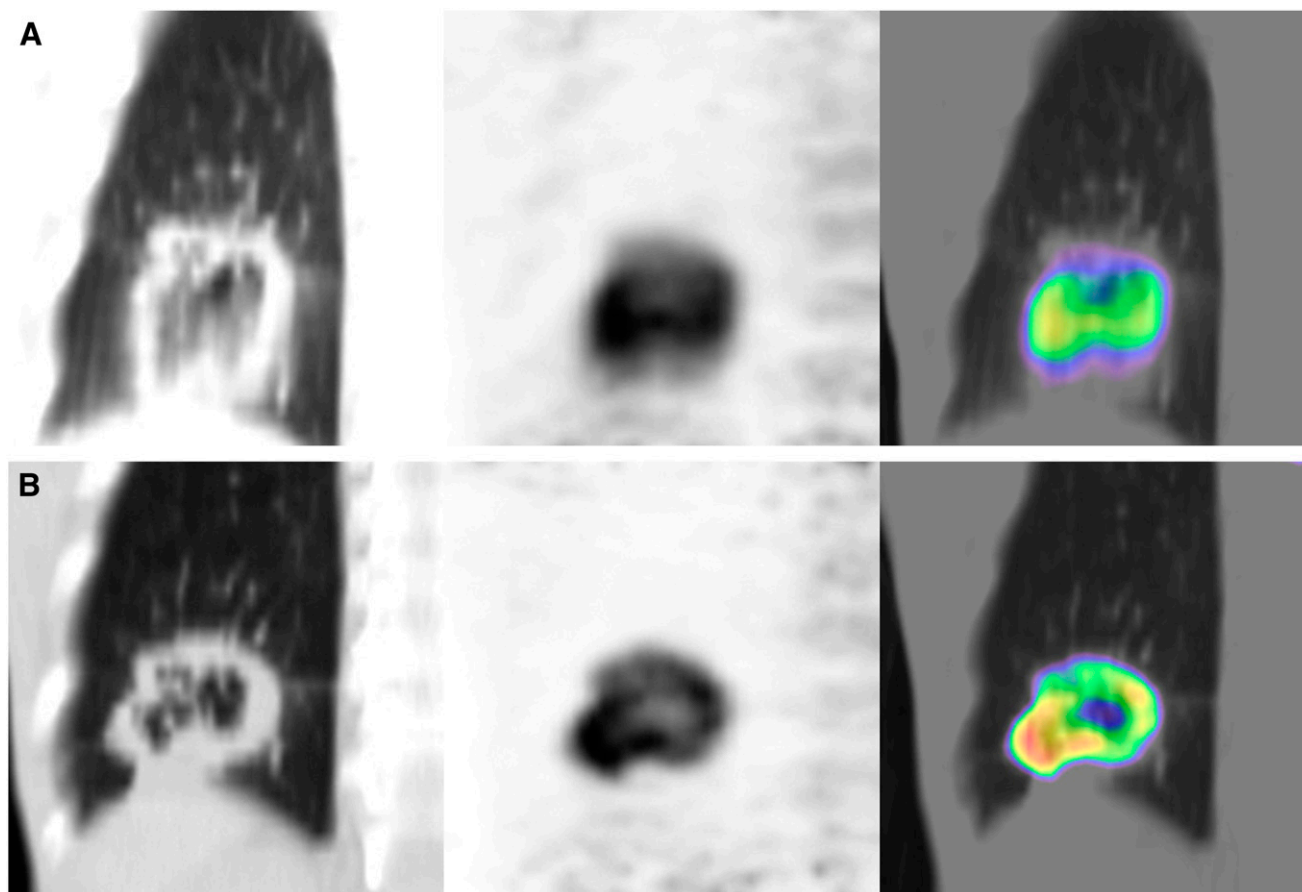


FIGURE 6. Man (70 y) with lung cancer in right lower lobe: coronal FB PET/CT (A) and coronal BH PET/CT (B). Maximum lesion diameter was 58 mm, with cavitation; BH time was 51 s. SUVmax for FB PET and BH PET was 16.71 and 18.84, respectively. %BH-index was 12.7. Respiratory motion artifact was noted in FB CT. Marginal ^{18}F -FDG accumulation in lung lesion with cavitation was clearly visualized on fusion BH PET/CT.

The present study has limitations. BH PET was performed during a short acquisition time; a PET acquisition time of 1 min/bed position was previously reported (19), but an acquisition time of less than 1 min has not been reported in the clinical setting. In our study, the BH time was equivalent to the acquisition time of BH dynamic PET. As both images were reconstructed using the same algorithm, the BH PET images were low-count images compared with the FB PET images acquired in 3 min (Figs. 5 and 6). Strictly speaking, SUVmax comparisons between short and long acquisition times are impossible because SUVmax is inherently influenced by noise, and the SUVmax of a short acquisition is affected by noise to a greater degree than that of a 3-min acquisition. To the best of our knowledge, no study has been conducted that compares the SUVmax of shorter acquisition times with that of longer acquisition times using the same type of PET/CT as the one at our institution. To address this gap in the literature, we performed a phantom study analyzing the features of visual detectability and the tendency of %Dif-index (Tables 2–4). Cases of shorter acquisition time and lower ^{18}F -FDG concentration were insufficient for SUVmax analysis; therefore, in the clinical study we excluded patients with short breath-holding and those in whom

pulmonary lesions showed lower ^{18}F -FDG accumulations on whole-body PET. Clinically, all pulmonary tumors of participating patients were easily distinguished from the pulmonary background activity, and ROIs were easily placed around the pulmonary tumors in BH PET. The target pulmonary lesion appeared to have high signal-to-noise ratio on BH PET; this could be because of the reduced background activity of the expanded lung in deep inspiration. A previous article has also commented on the increased target-to-background ratio in the thorax (17).

In the phantom study, the %Dif-index showed a tendency to be higher in large spheres and lower in small spheres. The %BH-index in the clinical study comprises the features of %Dif-index in the phantom study; however, the tendency in the clinical study of the %BH-index to be higher in small pulmonary lesions conflicts with the results of the phantom study. This conflict also supports the hypothesis that respiratory motion affects the %BH-index more strongly than it affects the %Dif-index of the phantom study, especially in small lesions.

A weak inverse relationship between patient age and BH time indicates that older patients tend to hold their breath for a shorter period than do younger patients. Respiratory function may influence the BH time.

In addition, the mean radiation effective dose of FB CT was slightly higher than that of BH CT. The differences in expanded lung density between FB and deep-inspiration BH may have influenced the auto tube current modulation.

Previous reports show that ^{18}F -FDG dosage and BMI affect the quality of PET images on LSO-based PET (22–24); however, in our results the factors of ^{18}F -FDG dosage, BMI, and BH time were not associated with %BH-index.

To reflect the features of phantom data, we restricted the maximum diameter of lung tumor in the clinical study to a range of 10–40 mm; however, the unexposed results, including large lesions more than 40 mm in diameter, showed the same tendencies as those described earlier and statistical differences (not shown).

The proposed BH PET/CT technique may be one of the feasible methods for SUVmax analysis and tumor registration in clinical PET/CT and is expected to enable precise SUVmax to be obtained in lung cancer. Determining a precise SUVmax can contribute to the reliability of chemoradiation therapy monitoring because BH PET/CT with breathing information provides similar scanning conditions from the baseline scan to follow-up scans. Future advances in detector and acquisition technology will reduce acquisition time and make this proposed BH technique clinically practical for whole-body PET/CT.

CONCLUSION

We described a phantom data analysis and SUVmax analysis of BH PET/CT data in 108 cases of lung cancer. SUVmax of BH PET showed an increase in the lower lung area. Lesions in the high %BH-index group appeared small compared with those in the low %BH-index group. The SUVmax of FB PET should not be accepted as accurate, especially in the lower lung area and for small pulmonary lesions. BH PET/CT realizes a complete match between CT and PET, with the expectation of obtaining precise SUVmax, and is thus recommended as part of the standard protocol for lung cancer.

REFERENCES

- Goerres GW, Kamel E, Heidelberg TN, Schwitter MR, Burger C, von Schulthess GK. PET-CT image coregistration in the thorax: influence of respiration. *Eur J Nucl Med Mol Imaging*. 2002;29:351–360.
- Beyer T, Antoch G, Blodgett T, Freudenberg LF, Akhurst T, Mueller S. Dual-modality PET/CT imaging: the effect of respiratory motion on combined image quality in clinical oncology. *Eur J Nucl Med Mol Imaging*. 2003;30:588–596.
- Erdi YE, Nehmeh SA, Pan T, et al. The CT motion quantitation of lung lesions and its impact on PET-measured SUVs. *J Nucl Med*. 2004;45:1287–1292.
- Pan T, Mawlawi O, Nehmeh SA, et al. Attenuation correction of PET images with respiration-averaged CT images in PET/CT. *J Nucl Med*. 2005;46:1481–1487.
- Beyer T, Rosenbaum S, Veit P, et al. Respiration artifacts in whole-body ^{18}F -FDG PET/CT studies with combined PET/CT tomographs employing spiral CT technology with 1 to 16 detector rows. *Eur J Nucl Med Mol Imaging*. 2005;32:1429–1439.
- Gilman MD, Fischman AJ, Krishnasetty V, Halpern EF, Aquino SL. Optimal CT breathing protocol for combined thoracic PET/CT. *AJR*. 2006;187:1357–1360.
- Allen-Auerbach M, Yeom K, Park J, Phelps M, Czernin J. Standard PET/CT of the chest during shallow breathing is inadequate for comprehensive staging of lung cancer. *J Nucl Med*. 2006;47:298–301.
- Juergens KU, Weckesser M, Stegger L, et al. Tumor staging using whole-body high-resolution 16-channel PET-CT: does additional low-dose chest CT in inspiration improve the detection of solitary pulmonary nodules? *Eur Radiol*. 2006;16:1131–1137.
- Aquino SL, Kuester LB, Muse VV, Halpern EF, Fischman AJ. Accuracy of transmission CT and FDG-PET in the detection of small pulmonary nodules with integrated PET/CT. *Eur J Nucl Med Mol Imaging*. 2006;33:692–696.
- Nehmeh SA, Erdi YE, Ling CC, et al. Effect of respiratory gating on reducing lung motion artifacts in PET imaging of lung cancer. *Med Phys*. 2002;29:366–371.
- Dewan NA, Gupta NC, Redepennig LS, Phalen JJ, Frick MP. Diagnostic efficacy of PET-FDG imaging in solitary pulmonary nodules: potential role in evaluation and management. *Chest*. 1993;104:997–1002.
- Nestle U, Kremp S, Schaefer-Schuler A, et al. Comparison of different methods for delineation of ^{18}F -FDG PET-positive tissue for target volume definition in radiotherapy of patients with non-small cell lung cancer. *J Nucl Med*. 2005;46:1342–1348.
- Biehl KJ, Kong FM, Dehdashti F, et al. ^{18}F -FDG PET definition of gross tumor volume for radiotherapy of non-small cell lung cancer: is a single standardized uptake value threshold approach appropriate? *J Nucl Med*. 2006;47:1808–1812.
- Nehmeh SA, Erdi YE, Ling CC, et al. Effect of respiratory gating on quantifying PET images of lung cancer. *J Nucl Med*. 2002;43:876–881.
- Nehmeh SA, Erdi YE, Rosenzweig KE, et al. Reduction of respiratory motion artifacts in PET imaging of lung cancer by respiratory correlated dynamic PET: methodology and comparison with respiratory gated PET. *J Nucl Med*. 2003;44:1644–1648.
- Nehmeh SA, Erdi YE, Pan T, et al. Four-dimensional (4D) PET/CT imaging of the thorax. *Med Phys*. 2004;31:3179–3186.
- Nehmeh SA, Erdi YE, Meirelles GS, et al. Deep-inspiration breath-hold PET/CT of the thorax. *J Nucl Med*. 2007;48:22–26.
- Meirelles GS, Erdi YE, Nehmeh SA, et al. Deep-inspiration breath-hold PET/CT: clinical findings with a new technique for detection and characterization of thoracic lesions. *J Nucl Med*. 2007;48:712–719.
- Halpern BS, Dahlbom M, Quon A, et al. Impact of patient weight and emission scan duration on PET/CT image quality and lesion detectability. *J Nucl Med*. 2004;45:797–801.
- Hanley J, Debois MM, Mah D, et al. Deep inspiration breath-hold technique for lung tumors: the potential value of target immobilization and reduced lung density in dose escalation. *Int J Radiat Oncol Biol Phys*. 1999;45:603–611.
- Mah D, Hanley J, Rosenzweig KE, et al. Technical aspects of the deep inspiration breath-hold technique in the treatment of thoracic cancer. *Int J Radiat Oncol Biol Phys*. 2000;48:1175–1185.
- Everaert H, Vanhove C, Lahoutte T, et al. Optimal dose of ^{18}F -FDG required for whole-body PET using an LSO PET camera. *Eur J Nucl Med Mol Imaging*. 2003;30:1615–1619.
- Halpern BS, Dahlbom M, Auerbach MA, et al. Optimizing imaging protocols for overweight and obese patients: a lutetium orthosilicate PET/CT study. *J Nucl Med*. 2005;46:603–607.
- Lodge MA, Badawi RD, Gilbert R, Dibos PE, Line BR. Comparison of 2-dimensional and 3-dimensional acquisition for ^{18}F -FDG PET oncology studies performed on an LSO-based scanner. *J Nucl Med*. 2006;47:23–31.



The Journal of
NUCLEAR MEDICINE

Deep-Inspiration Breath-Hold PET/CT of Lung Cancer: Maximum Standardized Uptake Value Analysis of 108 Patients

Tsuyoshi Kawano, Eiji Ohtake and Tomio Inoue

J Nucl Med. 2008;49:1223-1231.

Published online: July 16, 2008.

Doi: 10.2967/jnumed.107.049296

This article and updated information are available at:
<http://jnm.snmjournals.org/content/49/8/1223>

Information about reproducing figures, tables, or other portions of this article can be found online at:
<http://jnm.snmjournals.org/site/misc/permission.xhtml>

Information about subscriptions to JNM can be found at:
<http://jnm.snmjournals.org/site/subscriptions/online.xhtml>

The Journal of Nuclear Medicine is published monthly.
SNMMI | Society of Nuclear Medicine and Molecular Imaging
1850 Samuel Morse Drive, Reston, VA 20190.
(Print ISSN: 0161-5505, Online ISSN: 2159-662X)

© Copyright 2008 SNMMI; all rights reserved.