

# Dosimetry of Radioiodine Therapy in Patients with Nodular Goiter After Pretreatment with a Single, Low Dose of Recombinant Human Thyroid-Stimulating Hormone

Willy-Anne Nieuwlaat, MD<sup>1,2</sup>; Ad R. Hermus, MD, PhD<sup>2</sup>; H. Alec Ross, PhD<sup>3</sup>; Wilhelmina C. Buijs, PhD<sup>4</sup>; Michela A. Edelbroek, MD<sup>1</sup>; Jo W. Bus<sup>1</sup>; Frans H. Corstens, MD, PhD<sup>4</sup>; and Dyde A. Huysmans, MD, PhD<sup>1</sup>

<sup>1</sup>Department of Nuclear Medicine, Catharina Hospital, Eindhoven, The Netherlands; <sup>2</sup>Department of Endocrinology, University Medical Center Nijmegen, Nijmegen, The Netherlands; <sup>3</sup>Department of Chemical Endocrinology, University Medical Center Nijmegen, Nijmegen, The Netherlands; and <sup>4</sup>Department of Nuclear Medicine, University Medical Center Nijmegen, Nijmegen, The Netherlands

A single, low dose of recombinant human thyroid-stimulating hormone (rhTSH) doubles 24-h RAIU and causes a more homogeneous distribution of radioiodine on thyroid scintigrams of patients with nodular goiter. Pretreatment with rhTSH allows the therapeutic dose of <sup>131</sup>I to be reduced by 50%–60% without compromising the result of thyroid volume reduction. The present study focused on the dosimetric aspects of therapy with a reduced dose of <sup>131</sup>I after pretreatment with rhTSH in patients with nodular goiter. **Methods:** Thirty-six patients were treated with <sup>131</sup>I to reduce thyroid volume. Nine patients were pretreated with a single dose of 0.01 mg of rhTSH, and 9 patients, with 0.03 mg of rhTSH. Two control groups of 9 patients, matched for thyroid weight and 24-h radioactive iodide uptake, were not pretreated with rhTSH. The therapeutic dose of <sup>131</sup>I was aimed at being sufficient to result in retention of 3.7 MBq of <sup>131</sup>I per gram of thyroid tissue at 24 h. Thyroid radioactivity after <sup>131</sup>I administration was measured every 24 h for 3 d and on days 7, 10, 14, 21, and 28. A model of iodine biokinetics was used to estimate absorbed doses in organs. Protein-bound <sup>131</sup>I activity was measured at 1, 2, 3, 7, and 10 d and at 2, 3, and 4 wk after <sup>131</sup>I therapy. **Results:** The administered activities were 1.5 times lower in the 0.01-mg rhTSH group and 1.9 times lower in the 0.03-mg rhTSH group than in the control groups. The absorbed dose in the thyroid was similar in the rhTSH-pretreated groups and in the control groups. In the organs of excretion (bladder) and uptake (stomach) of inorganic iodide, the absorbed doses were 2- to 3-fold lower in the pretreated groups than in the control groups. The effective dose equivalent outside the thyroid was considerably lower in the rhTSH-pretreated groups than in their respective control groups (1.6-fold in the 0.01-mg rhTSH group and 2.3-fold in the 0.03-mg rhTSH group). The time course of protein-bound <sup>131</sup>I activity in serum and the cumulated protein-bound <sup>131</sup>I activity in serum did not differ significantly between rhTSH-pretreated and control groups.

**Conclusion:** <sup>131</sup>I therapy after pretreatment with a single, low dose of rhTSH, with the dose reduced according to the rhTSH-induced increase in 24-h radioactive iodide uptake, caused lower radiation-absorbed doses in extrathyroidal organs and tissues, especially bladder and stomach, and no significant increase in the release of <sup>131</sup>I-labeled thyroid hormones into the circulation of patients with nodular goiter. Thus, this mode of therapy can be recommended, especially when the dose of radioiodine to be administered without rhTSH pretreatment is high.

**Key Words:** nodular goiter; recombinant human thyroid-stimulating hormone; radioiodine therapy

**J Nucl Med 2004; 45:626–633**

**R**adioiodine (<sup>131</sup>I) therapy is effective for reduction of thyroid volume in patients with nontoxic, nodular goiter. Several studies have found that <sup>131</sup>I treatment decreased goiter size by approximately 40% after 1 y (1–7) and by 50%–60% after 3–5 y (2,8,9).

In the reported studies, a single dose of approximately 3.7 MBq (100  $\mu$ Ci) of <sup>131</sup>I per gram of thyroid tissue, corrected for thyroid radioactive iodide uptake (RAIU) at 24 h, was given. In patients with nontoxic, nodular goiter, RAIU is usually rather low. As a result, high doses of <sup>131</sup>I are often needed, causing a relatively high radiation burden to extrathyroidal tissues (10). Therefore, exploration of strategies to enhance RAIU in these patients would be of interest. A method to enhance RAIU in patients with nodular goiter is to increase the serum level of thyroid-stimulating hormone, which is often low normal or below normal.

In 2000, we reported that pretreatment with 0.01 or 0.03 mg of recombinant human thyroid-stimulating hormone (rhTSH) doubled 24-h RAIU in patients with nodular goiter (11). We also found that pretreatment with rhTSH caused a more homogeneous distribution of radioiodine on thyroid

Received Nov. 6, 2003; revision accepted Nov. 17, 2003.

For correspondence or reprints contact: Willy-Anne Nieuwlaat, MD, Department of Endocrinology, University Medical Center Nijmegen, P.O. Box 9101, 6500 HB Nijmegen, The Netherlands.

E-mail: [wanieww@knmg.nl](mailto:waniemw@knmg.nl)

scintigrams of nodular goiters (12). Pretreatment with a single, low dose of rhTSH allowed us to reduce the therapeutic dose of radioiodine in patients with nodular goiter by 50%–60% without compromising the result of thyroid volume reduction (13).

The present study focused on the dosimetric aspects of therapy with a reduced dose of radioiodine after rhTSH pretreatment of patients with nodular goiter. We hypothesized that therapy with a reduced dose of  $^{131}\text{I}$  after pretreatment with rhTSH would decrease the radiation burden to extrathyroidal tissues. Absorbed doses in the thyroid and in extrathyroidal organs and tissues were estimated for patients treated with radioiodine with and without rhTSH pretreatment, using thyroid radioactivity measurements and a model of iodine kinetics in the body as described by Robertson and Gorman (14).

Furthermore, we investigated whether pretreatment with rhTSH increased the release of  $^{131}\text{I}$ -labeled thyroid hormones or thyroglobulin into the circulation after radioiodine therapy. If this were the case, the advantage of lowering the amount of free inorganic  $^{131}\text{I}$  in the circulation by using lower therapeutic doses of  $^{131}\text{I}$  after rhTSH pretreatment might be outweighed by an increase in circulating protein-bound  $^{131}\text{I}$  levels ( $\text{PB}^{131}\text{I}$ ).

## MATERIALS AND METHODS

### Patients

Thirty-six patients with nodular goiter, who were referred for radioiodine therapy to reduce thyroid volume, participated in this study. All patients had normal serum levels of free thyroxine (9.0–22.3 pmol/L) and total triiodothyronine (1.0–3.0 nmol/L). Serum thyroid-stimulating hormone levels were normal (0.2–5.5 mU/L) in 24 patients and below normal in 12 patients. The results of careful palpation of the thyroid, followed by fine-needle aspiration biopsy of dominant nodules and of those that had a different consistency from other nodules within the gland gave no suggestion of thyroid malignancy in any of the patients. None of the patients had recently taken medication known to affect thyroid function or RAIU. Patients had not received iodine-containing agents in the last 6 mo. An electrocardiogram, complete blood count, liver enzyme determination, plasma creatinine and glucose measurement, and screening urinalysis did not show abnormalities in any patients.

Twenty-four hours before radioiodine therapy, a first group of 9 consecutive patients received 0.01 mg of rhTSH and a second group of 9 consecutive patients received 0.03 mg of rhTSH. Afterward, 18 consecutive patients were treated with radioiodine without rhTSH pretreatment; from these, 2 control groups of 9 patients each were selected, matching the rhTSH-pretreated groups with respect to thyroid weight and 24-h RAIU.

The institutional human research committee approved the study, and all patients gave written informed consent to participate.

### Diagnostic Investigations Preceding Radioiodine Therapy

A diagnostic dose of 40 MBq of sodium ( $^{123}\text{I}$ ) iodide was administered as an oral solution. RAIU, as a percentage of the administered dose of  $^{123}\text{I}$  corrected for physical decay, was mea-

sured at 24 h using a  $7.62 \times 7.62$  cm ( $3 \times 3$  in.) NaI (TI) detector. Dead-time corrections were made using standard software. Thyroid scintigraphy in the 159-keV window of  $^{123}\text{I}$  was performed 24 h after radioiodine administration. All thyroid scintigrams showed heterogeneous uptake.

In 18 patients, the influence of rhTSH on RAIU was investigated at least 2 wk after radioiodine administration for the baseline investigation. After reconstitution of 0.9 mg of freeze-dried rhTSH (Thyrogen ampules; Genzyme) with 1.2 mL of sterile water, part of the obtained solution was diluted with saline to a final concentration of 0.05 mg/mL. Immediately after dilution, 0.01 mg (0.2 mL;  $n = 9$ ) or 0.03 mg (0.6 mL;  $n = 9$ ) of rhTSH was injected in the quadriceps muscle. Twenty-four hours after the administration of rhTSH, a diagnostic dose of 40 MBq of sodium  $^{123}\text{I}$  was administered as an oral solution. RAIU, as a percentage of the administered dose of  $^{123}\text{I}$  corrected for physical decay, was measured at 24 h.

### Radioiodine Therapy

Twenty-three days (median; range, 5–84 d) after the last diagnostic 24-h RAIU measurement, radioiodine therapy was given as a single oral dose to all 36 patients on an in-patient basis. The therapeutic dose of  $^{131}\text{I}$  was aimed at being sufficient to result in retention of 3.7 MBq (100  $\mu\text{Ci}$ ) of  $^{131}\text{I}$  per gram of thyroid tissue at 24 h, according to the following formula: administered activity (GBq) = [thyroid weight (g)  $\times$  0.37 (GBq/g)]/24-h thyroid RAIU (%) (15). Thyroid weight was estimated from the planimetric surface on the baseline scintigram using the formula of Doering and Kramer (16): thyroid weight (g) =  $0.326 \times \text{surface (cm}^2)^{3/2}$ .

The 18 patients who were treated with rhTSH before radioiodine therapy again received an injection of rhTSH in the quadriceps muscle, using the same rhTSH dose as was given for the diagnostic investigation. The therapeutic dose of radioiodine was given 24 h later. In the rhTSH-pretreated patients, the therapeutic dose of  $^{131}\text{I}$  was adjusted to the 24-h RAIU after rhTSH pretreatment, as determined for the individual patients in the preceding diagnostic investigations. The RAIU ratio is defined as the ratio between the 24-h RAIU after rhTSH pretreatment and the baseline 24-h RAIU (Table 1). Neither group of 9 control patients received rhTSH pretreatment.

### Thyroid Radioactivity Measurements and Dosimetric Calculations

In all 36 patients, thyroid radioactivity was measured every 24 h for 3 d after the administration of the therapeutic dose of radioiodine and on days 7, 10, 14, 21, and 28. A  $7.62 \times 7.62$  cm ( $3 \times 3$  in.) NaI (TI) detector was used, with a lead shield placed in front of it to reduce the counting rate and avoid dead-time effects. Measurements were corrected for a standard with a known activity of  $^{131}\text{I}$ , and all values were corrected for background radioactivity and for physical decay.

Thyroid radioactivity measurements were implemented in a simplified model for iodine biokinetics as described by Robertson and Gorman (14), with some amendments, as previously described by Huysmans et al. (10). Serum creatinine levels were within the reference range in all patients. Therefore, a normal urinary excretion rate of radioiodide was assumed for all patients (17). The rate of uptake of radioiodine into the thyroid was calculated from the radioactivity measurements at 24 h and from the radioiodide excretion rate. The fractional excretion of radioiodinated thyroid hormones from the thyroid into the circulation was calculated from

**TABLE 1**  
Patient Characteristics and Results of Radioactivity Measurements After Radioiodine Treatment With and Without rhTSH Pretreatment of Patients with Nodular Goiter

| Characteristic  | 0.01 mg rhTSH                 |                             |         | 0.03 mg rhTSH                 |                            |         |
|---|-------------------------------|-----------------------------|---------|-------------------------------|----------------------------|---------|
|   | Treatment                     | Control                     | P       | Treatment                     | Control                    | P       |
| No. of patients   | 9                             | 9                           |         | 9                             | 9                          |         |
| Age (y)   | 57 ± 9 (46–71)                | 65 ± 8 (56–82)              | NS      | 62 ± 7 (50–72)                | 64 ± 9 (54–82)             | NS      |
| Female-to-male ratio  | 7:2                           | 9:0                         |         | 7:2                           | 9:0                        |         |
| Baseline serum TSH (mU/L)   | 0.73 ± 0.46 (0.27–1.70)       | 0.45 ± 0.47 (0.03–1.32)     | NS      | 0.55 ± 0.56 (0.03–1.80)       | 0.69 ± 0.84 (0.03–2.44)    | NS      |
| Thyroid weight (g)*   | 166 ± 63 (90–265)             | 161 ± 51 (85–225)           | NS      | 117 ± 33 (70–155)             | 114 ± 59 (45–190)          | NS      |
| 24-h RAIU baseline (%)  | 26 ± 6 (16–34)                | 29 ± 7 (20–43)              | NS      | 23 ± 4 (17–27)                | 26 ± 5 (20–36)             | NS      |
| 24-h RAIU rhTSH (%)   | 47 ± 11 (28–63)               | Not done                    |         | 55 ± 9 (41–69)                | Not done                   |         |
| RAIU ratio  | 1.9 ± 0.4 (1.2–2.5)           | Not done                    |         | 2.4 ± 0.4 (2.0–3.1)           | Not done                   |         |
| Therapeutic dose of <sup>131</sup> I (GBq)                                    | 1.5 ± 0.7 (0.7–2.5)           | 2.2 ± 0.7 (1.1–3.0)         | <0.05   | 0.9 ± 0.2 (0.6–1.1)           | 1.7 ± 0.9 (0.6–3.0)        | <0.05   |
| 24-h RAIU therapeutic dose (%)  | 45 ± 6 (37–54)                | 25 ± 7 (16–39)              | <0.0001 | 49 ± 8 (42–66)                | 22 ± 5 (15–27)             | <0.0001 |
| Effective half-time of <sup>131</sup> I in thyroid (d)                        | 6.4 ± 0.6 (5.2–7.1)           | 6.4 ± 0.3 (6.0–6.7)         | NS      | 6.6 ± 0.5 (5.8–7.2)           | 6.4 ± 0.2 (6.0–6.7)        | NS      |
| Biologic half-time of <sup>131</sup> I in thyroid (d)                         | 36 ± 15 (14–58)               | 32 ± 6 (23–39)              | NS      | 41 ± 18 (21–73)               | 33 ± 6 (23–40)             | NS      |
| Cumulated activity in thyroid (GBq × h)                                       | 145 ± 61 (67–223)             | 126 ± 41 (62–177)           | NS      | 95 ± 20 (63–120)              | 86 ± 37 (35–137)           | NS      |
| Cumulated fractional activity of <sup>131</sup> I in thyroid (h) <sup>†</sup> | 100.18 ± 14.77 (72.28–116.79) | 58.78 ± 13.96 (37.65–83.45) | <0.0001 | 114.18 ± 22.96 (90.68–165.13) | 51.97 ± 9.87 (37.65–63.58) | <0.0001 |
| Stomach (h) <sup>‡</sup>  | 1.11 ± 0.09 (0.97–1.23)       | 1.46 ± 0.13 (1.20–1.63)     | <0.0001 | 1.00 ± 0.15 (0.69–1.14)       | 1.53 ± 0.09 (1.43–1.65)    | <0.0001 |
| Small intestine (h) <sup>‡</sup>  | 1.25 ± 0.11 (1.10–1.39)       | 1.66 ± 0.15 (1.36–1.85)     | <0.0001 | 1.14 ± 0.18 (0.78–1.30)       | 1.73 ± 0.10 (1.62–1.87)    | <0.0001 |
| Liver (h) <sup>‡</sup>  | 0.45 ± 0.14 (0.30–0.70)       | 0.28 ± 0.10 (0.16–0.51)     | <0.01   | 0.45 ± 0.16 (0.29–0.76)       | 0.24 ± 0.06 (0.14–0.31)    | <0.001  |
| Rest of body (h) <sup>‡</sup>   | 5.67 ± 0.46 (5.13–6.52)       | 7.04 ± 0.47 (6.20–7.73)     | <0.0001 | 5.22 ± 0.73 (3.60–5.97)       | 7.27 ± 0.33 (6.89–7.73)    | <0.0001 |
| Urinary bladder (h) <sup>‡</sup>  | 1.31 ± 0.10 (1.20–1.50)       | 1.60 ± 0.09 (1.43–1.74)     | <0.0001 | 1.22 ± 0.16 (0.87–1.38)       | 1.64 ± 0.07 (1.56–1.74)    | <0.0001 |

\*Determined by scintigraphy.

<sup>†</sup>Calculated from thyroid radioactivity measurements.

<sup>‡</sup>Calculated using thyroid radioactivity measurements and the biokinetic model of Robertson and Gorman, with amendments based on *MIRD Pamphlet No. 12* and *MIRD Report No. 5*.

NS = not statistically significant.

Data are mean ± SD, with ranges in parentheses.

thyroid radioactivity measurements from day 2 onward, fitted as a monoexponential function.

Radiation-absorbed doses in organs were calculated using the MIRD method (18). The calculated cumulated fractional activities in the source organs thyroid, urinary bladder, stomach, small intestine, and total body were entered in the MIRDOSE3.1 computer program (Oak Ridge Institute for Science and Education). Absorbed doses in the thyroid were corrected for the ratio of normal thyroid weight (20 g) to individual thyroid weight estimated by thyroid scintigraphy. Tissue weighting factors were used to determine the effective dose equivalent outside the thyroid (19).

### Hormone Assays

Free thyroxine and total triiodothyronine were measured by chemiluminescent immunoassay and serum thyroid-stimulating hormone by 2-site immunochemiluminometric assay using an ACS:180 Automated Chemiluminescence System (Bayer).

### PB<sup>131</sup>I Measurements

Blood samples were drawn from all patients at 1, 2, 3, 7, and 10 d and at 2, 3, and 4 wk after radioiodine administration. From each serum sample, 0.3 mL was taken for measurement of total <sup>131</sup>I activity in the serum and 0.3 mL for measurement of PB<sup>131</sup>I activity. The latter 0.3-mL sample was prediluted with 0.9 mL of a solution of 0.05 mol/L phosphate buffer (pH 7.4) and 0.1 mol/L sodium chloride. Protein-bound iodine was precipitated by addition of 1.5 mL of cold trichloroacetic acid, 20%. The resulting samples were left standing for 10 min at room temperature and then centrifuged for 2 min at 2,000 rpm. The precipitate was washed twice with the trichloroacetic acid solution. By this method, 89% ± 6% of the total serum free thyroxine is precipitated (H.A. Ross, unpublished data, 1999). All samples (total serum and precipitate) were measured in a universal  $\gamma$ -counter (1282 Compugamma CS; Wallac). Radioactivity in all samples was compared with a standard curve of sodium-<sup>131</sup>I with known activity, to calculate the activity in MBq/L.

Time-activity curves were created for total <sup>131</sup>I activity and PB<sup>131</sup>I activity in each individual patient (Fig. 1). The area under each PB<sup>131</sup>I time-activity curve was calculated. This area under the curve represents the cumulated PB<sup>131</sup>I activity in each serum fraction and is expressed in GBq·L<sup>-1</sup>·d. The cumulated total <sup>131</sup>I

activity in the serum was not calculated because, in view of radiation safety regulations in the hospital, measurements on the day of radioiodine therapy had not been performed and because total <sup>131</sup>I activity in the serum is highest in the first hours after radioiodine administration, in contrast to PB<sup>131</sup>I activity, which is low during the first day after radioiodine therapy.

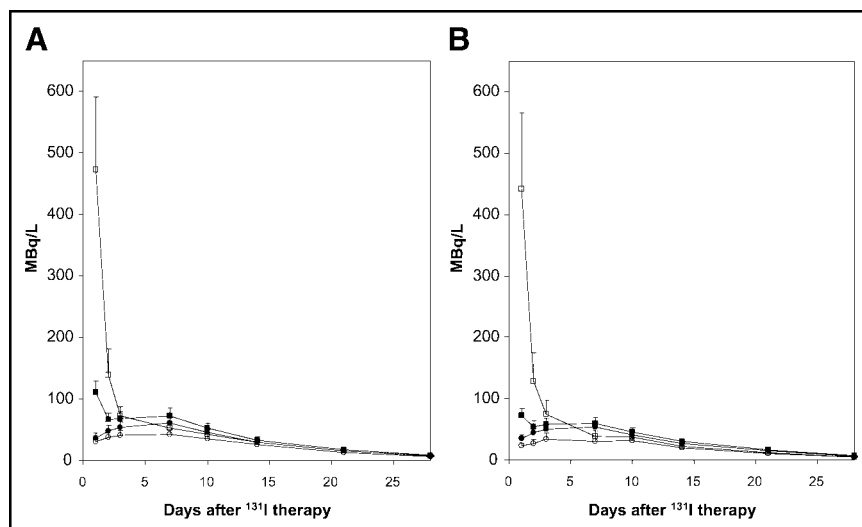
### Statistical Analyses

The mean value ± SD is given, unless otherwise stated. Statistical analyses were done using the Mann-Whitney *U* test (with probability values denoted as *P*) and the Spearman rank correlation test (with probability values denoted as *P*\*). Areas under the time-activity curves obtained from the subjects who received rhTSH were compared with those of the matched controls by means of the Mann-Whitney *U* test. The time-activity curves themselves were compared by repeated-measures ANOVA, with time after <sup>131</sup>I administration as the within-subject factor and rhTSH pretreatment as the between-subjects factor. Probability values < 0.05 were considered to indicate statistical significance.

### RESULTS

Table 1 shows the characteristics of all patients and the data on their thyroid radioactivity measurements. As expected, because rhTSH-pretreated groups and control groups were matched for thyroid weight and thyroid 24-h RAIU, thyroid weight, based on planimetric thyroid scintigrams, and baseline thyroid 24-h RAIU were similar in the rhTSH groups and their respective control groups. rhTSH-stimulated 24-h RAIU in the pretreated groups was considerably higher than baseline RAIU in the control groups. Therefore, the average administered activities in the rhTSH-pretreated groups were considerably lower than those in the control groups (in the 0.01-mg rhTSH group, 67% of that in the control group; in the 0.03-mg rhTSH group, 53% of that in the control group; both *P* < 0.05).

Thyroid radioactivity measurements after radioiodine therapy showed somewhat lower 24-h RAIU of the therapeutic doses when compared with the 24-h RAIU of the



**FIGURE 1.** Total <sup>131</sup>I activity and PB<sup>131</sup>I activity per liter of serum on day 0 after radioiodine therapy in patients with nodular goiter. (A and B) Nine patients were pretreated with 0.01 mg of rhTSH (A), and 9 with 0.03 mg of rhTSH (B). The results for each rhTSH group were compared with those for 9 control patients. Mean value + SEM is given. ■ = total <sup>131</sup>I activity in rhTSH-pretreated patients; □ = total <sup>131</sup>I activity in control patients; ● = PB<sup>131</sup>I activity in rhTSH-pretreated patients; ○ = PB<sup>131</sup>I activity in control patients.



previous diagnostic doses. However, this trend was observed not only in the rhTSH-pretreated groups but also in the control groups (Table 1). The effective half-time of  $^{131}\text{I}$  in the thyroid did not significantly differ between rhTSH-pretreated patients and control patients (Table 1). The cumulated fractional activity (MBq·h/administered MBq) in the thyroid was approximately 1.7 times higher in the 0.01-mg rhTSH-pretreated group and 2.2 times higher in the 0.03-mg rhTSH-pretreated group than in their respective control groups (Table 1). The cumulated fractional activity in the liver, as calculated from thyroid radioactivity measurements and the biokinetic model (14) with modifications (10), was also longer in the pretreated groups, because their higher thyroid RAIU caused the component of radioiodinated thyroid hormones to be larger. Cumulated fractional activities in the other source organs, mainly determined by inorganic iodide (stomach, small intestine, rest of body, urinary bladder), were significantly lower in the rhTSH-pretreated patients (0.01 mg and 0.03 mg rhTSH) than in their controls.

Table 2 shows the calculated absorbed doses in the tissues and organs for which a tissue-weighting factor has been determined (19), expressed as dose per unit of administered radioiodine (in mGy/MBq) and as dose resulting from the total administered activities of radioiodine (in Gy). The absorbed dose in the thyroid per unit of administered activity was higher in the pretreated groups than in the control groups because of the higher cumulated fractional activity in the thyroid of the pretreated groups.

Outside the thyroid gland, the highest absorbed doses calculated per megabecquerel of administered  $^{131}\text{I}$  were in urinary bladder, followed by the stomach. For these organs, the absorbed doses per megabecquerel were significantly higher without than with rhTSH pretreatment ( $P < 0.0001$ ). Absorbed doses per megabecquerel of administered radioiodine inversely correlated with 24-h RAIU for the urinary bladder ( $r = -0.73$ ;  $P^* < 0.0001$ ) and the stomach ( $r = -0.74$ ;  $P^* < 0.0001$ ). Absorbed doses per megabecquerel of administered radioiodine in some of the other target organs (bone surface, breast, lungs, red bone marrow, and skin) were determined predominantly by the cumulated fractional activity in the thyroid and were therefore higher in the pretreated groups than in the control groups.

The absorbed dose in the thyroid resulting from the total administered activity was similar in the pretreated groups and their respective control groups. Outside the thyroid, the highest absorbed doses resulting from the total administered activities were in the urinary bladder and the stomach. In these organs of excretion (bladder) and uptake (stomach) of inorganic iodide, the absorbed doses resulting from the total administered activity were 2- to 3-fold lower in the pretreated groups than in their control groups. In all other extrathyroidal organs and tissues, somewhat lower absorbed doses were found in the pretreated groups than in the control groups, but the differences did not reach significance, except for those in colon and gonads.

The effective dose equivalent for the combined organs and tissues outside the thyroid gland was considerably lower in the rhTSH-pretreated groups than in their control groups (0.01-mg rhTSH group vs. control group,  $0.21 \pm 0.09$  Gy vs.  $0.33 \pm 0.10$  Gy [ $P < 0.05$ ]; 0.03-mg rhTSH group vs. control group,  $0.12 \pm 0.03$  Gy vs.  $0.27 \pm 0.14$  Gy [ $P < 0.05$ ]).

The cumulated  $\text{PB}^{131}\text{I}$  activity in serum did not differ significantly between pretreated groups and their respective control groups. The cumulated  $\text{PB}^{131}\text{I}$  activity in serum was  $0.93 \pm 0.15$  GBq·L $^{-1}$ ·d in the 0.01-mg rhTSH group versus  $0.70 \pm 0.13$  GBq·L $^{-1}$ ·d in the control group and  $0.85 \pm 0.12$  GBq·L $^{-1}$ ·d in the 0.03-mg rhTSH group versus  $0.52 \pm 0.13$  GBq·L $^{-1}$ ·d in the control group (mean value  $\pm$  SEM;  $n = 9$ ). Figure 1 shows the time-activity curves of total  $^{131}\text{I}$  activity and  $\text{PB}^{131}\text{I}$  activity in serum after radioiodine therapy in the 2 groups of rhTSH-pretreated patients and in the 2 control groups. The time course of  $\text{PB}^{131}\text{I}$  activities did not significantly differ between pretreated and control groups.

## DISCUSSION

Our study, based on thyroid radioactivity measurements and the iodine biokinetic model of Robertson and Gorman (14), shows that radioiodine therapy after pretreatment with rhTSH, with the dose of  $^{131}\text{I}$  reduced according to the rhTSH-induced increase in 24-h RAIU, caused a lower radiation burden to the extrathyroidal tissues than did radioiodine therapy without rhTSH pretreatment in patients with nodular goiter. The reduction in radiation burden was largest for the urinary bladder and the stomach. These are the extrathyroidal organs that receive the highest radiation doses from radioiodine therapy.

The therapeutic  $^{131}\text{I}$  doses given to the rhTSH-pretreated patients were reduced according to the individual increases in diagnostic 24-h RAIU after rhTSH administration. RAIU measurements after therapy showed that the 24-h RAIU of the therapeutic dose was somewhat lower than the 24-h RAIU of the preceding diagnostic dose in most patients. However, this occurred in all 4 groups of patients to a similar degree, and the 24-h RAIU of the therapeutic dose was considerably higher in the rhTSH-pretreated groups than in the control groups. The effective half-time of radioiodine in the thyroid did not differ significantly between pretreated and control groups. Therefore, although we calculated increased absorbed doses in the thyroid per unit of administered activity in the pretreated groups, the total absorbed doses in the thyroid were similar in the rhTSH-pretreated groups and their respective control groups. Thyroid volume reduction by radioiodine has been shown to correlate positively with the administered amount of radioiodine per gram of thyroid tissue corrected for 24-h RAIU (5) and consequently with the absorbed dose in the thyroid. Therefore, reducing the therapeutic dose of radioiodine after rhTSH administration is not likely to have negatively influ-

**TABLE 2**  
Radiation-Absorbed Doses in Target Organs After Radioiodine Treatment With and Without rhTSH Pretreatment in Patients with Nodular Goiter

| Target organ             | Absorbed dose per unit administered activity (mGy/MBq) |               |         |                |               |         | Absorbed dose (Gy) |                |         |                |                |        |
|--------------------------|--|---------------|---------|----------------|---------------|---------|--------------------|----------------|---------|----------------|----------------|--------|
|                          | 0.01 mg rhTSH  |               |         | 0.03 mg rhTSH  |               |         | 0.01 mg rhTSH      |                |         | 0.03 mg rhTSH  |                |        |
|                          | Treatment  | Control       | P       | Treatment      | Control       | P       | Treatment          | Control        | P       | Treatment      | Control        | P      |
| Thyroid*                 | 92.60 ± 42.72  | 54.24 ± 19.59 | <0.05   | 139.40 ± 55.76 | 82.60 ± 48.84 | <0.05   | 113.41 ± 16.30     | 107.42 ± 12.69 | NS      | 108.94 ± 15.52 | 109.75 ± 23.25 | NS     |
| Bone surface             | 0.17 ± 0.02  | 0.11 ± 0.02   | <0.0001 | 0.18 ± 0.03    | 0.11 ± 0.01   | <0.0001 | 0.24 ± 0.09        | 0.25 ± 0.08    | NS      | 0.15 ± 0.03    | 0.19 ± 0.10    | NS     |
| Breast                   | 0.06 ± 0.01  | 0.05 ± 0.01   | <0.05   | 0.07 ± 0.01    | 0.05 ± 0.00   | <0.0001 | 0.09 ± 0.04        | 0.11 ± 0.03    | NS      | 0.06 ± 0.01    | 0.09 ± 0.04    | NS     |
| Colon†                   | 0.05 ± 0.01  | 0.06 ± 0.00   | <0.0001 | 0.07 ± 0.09    | 0.06 ± 0.00   | <0.005  | 0.07 ± 0.03        | 0.13 ± 0.04    | <0.0005 | 0.06 ± 0.07    | 0.11 ± 0.06    | <0.05  |
| Liver                    | 0.07 ± 0.02  | 0.05 ± 0.01   | <0.05   | 0.07 ± 0.01    | 0.05 ± 0.01   | <0.0001 | 0.10 ± 0.04        | 0.11 ± 0.03    | NS      | 0.06 ± 0.02    | 0.08 ± 0.04    | NS     |
| Lungs                    | 0.13 ± 0.02  | 0.09 ± 0.01   | <0.001  | 0.15 ± 0.03    | 0.09 ± 0.01   | <0.0001 | 0.19 ± 0.07        | 0.21 ± 0.06    | NS      | 0.12 ± 0.03    | 0.15 ± 0.08    | NS     |
| Ovaries                  | 0.05 ± 0.00  | 0.06 ± 0.00   | <0.0001 | 0.04 ± 0.01    | 0.06 ± 0.00   | <0.0001 | 0.06 ± 0.03        | 0.13 ± 0.04    | <0.01   | 0.04 ± 0.01    | 0.10 ± 0.05    | <0.01  |
| Red bone marrow          | 0.12 ± 0.02  | 0.09 ± 0.01   | <0.0001 | 0.13 ± 0.02    | 0.08 ± 0.01   | <0.0001 | 0.17 ± 0.07        | 0.19 ± 0.06    | NS      | 0.11 ± 0.02    | 0.15 ± 0.08    | NS     |
| Skin                     | 0.12 ± 0.04  | 0.09 ± 0.02   | NS      | 0.13 ± 0.04    | 0.08 ± 0.01   | <0.05   | 0.17 ± 0.07        | 0.20 ± 0.06    | NS      | 0.11 ± 0.03    | 0.15 ± 0.08    | NS     |
| Stomach                  | 0.34 ± 0.03  | 0.45 ± 0.04   | <0.0001 | 0.31 ± 0.05    | 0.47 ± 0.02   | <0.0001 | 0.50 ± 0.24        | 0.99 ± 0.33    | <0.0005 | 0.27 ± 0.09    | 0.81 ± 0.43    | <0.001 |
| Testes                   | 0.02 ± 0.00  |               |         | 0.02 ± 0.00    |               |         | 0.05 ± 0.00        |                |         | 0.02 ± 0.00    |                |        |
| Urinary bladder          | 0.55 ± 0.08  | 0.71 ± 0.04   | <0.0001 | 0.51 ± 0.09    | 0.73 ± 0.03   | <0.0001 | 0.80 ± 0.37        | 1.55 ± 0.50    | <0.0005 | 0.44 ± 0.16    | 1.27 ± 0.66    | <0.005 |
| Remainder†               | 0.10 ± 0.01  | 0.10 ± 0.00   | NS      | 0.11 ± 0.02    | 0.09 ± 0.00   | <0.05   | 0.14 ± 0.06        | 0.21 ± 0.06    | <0.05   | 0.09 ± 0.02    | 0.17 ± 0.09    | NS     |
| EDE outside thyroid (Sv) |  |               |         |                |               |         | 0.21 ± 0.09        | 0.33 ± 0.10    | <0.05   | 0.12 ± 0.03    | 0.27 ± 0.14    | <0.05  |

\*Thyroid absorbed doses as calculated with MIRDSE3.1 are corrected for the ratio of normal thyroid weight (20 g) to measured actual thyroid weight determined by scintigraphy.

†0.57 × dose to upper large intestine + 0.43 × dose to lower large intestine.

‡The absorbed dose in the remainder of the body is the average dose in the following organs and tissues: adrenals, brain, upper large intestine, small intestine, kidney, muscle, pancreas, spleen, thymus, and uterus.

EDE = effective dose equivalent.

Data are mean ± SD (n = 9 patients in each group).

enced thyroid volume reduction. This is in accordance with recently published data by our group (13).

We used the MIRDOSE3.1 program to calculate the doses that extrathyroidal tissues absorbed from the total administered activity of radioiodine. Extrathyroidally absorbed doses after radioiodine therapy were by far highest in the urinary bladder and stomach, as was expected because inorganic iodine is excreted through the bladder and is concentrated (although not made organic) in the stomach. Enhanced uptake of radioiodine in the thyroid of rhTSH-pretreated patients resulted in lower amounts of circulating inorganic radioiodine during the first days after therapy and in lower cumulated fractional activities of radioiodine in the inorganic radioiodine compartment (including the stomach) and the bladder. Therefore, the absorbed doses in urinary bladder and stomach were reduced by a factor of 2 in the 0.01-mg rhTSH group and by a factor of 3 in the 0.03-mg rhTSH group in comparison with their respective control groups. These reductions are important, because the risk of cancer of the stomach has been reported to be slightly increased after radioiodine therapy in patients with toxic, nodular goiter (20,21). In other studies, the incidences of bladder cancer and breast cancer have been reported to be increased in patients with toxic nodular goiter treated with radioiodine (22–24).

The liver is the organ in which  $^{131}\text{I}$  incorporated in thyroid hormones is collected and metabolized. This was accounted for by assigning 40% of the extrathyroidal thyroid hormone compartment to the liver. The amount of  $^{131}\text{I}$ -labeled thyroid hormone per megabecquerel of radioiodine administered was higher in the rhTSH-pretreated groups than in the control groups, resulting in a higher cumulated fractional activity of  $^{131}\text{I}$  in the liver in the rhTSH-pretreated groups. However, the absorbed dose in the liver was similar in rhTSH-pretreated and control groups because of the reduction in administered dose of radioiodine in the rhTSH-pretreated groups.

Absorbed doses in all extrathyroidal organs were lower in the rhTSH-pretreated groups than in the control groups. However, in the organs, in which the absorbed dose is predominantly determined by the cumulated activity in the thyroid, the difference did not reach statistical significance, because the cumulated activity in the thyroid was similar in rhTSH-pretreated and control groups. The effective dose equivalent outside the thyroid was considerably lower in the rhTSH-pretreated groups than in their respective control groups (1.6-fold in the 0.01-mg rhTSH group and 2.3-fold in the 0.03-mg rhTSH group).

Not only thyroid iodine uptake but also thyroid hormone release is stimulated by thyroid-stimulating hormone. Thyroid stimulation predominantly releases thyroid hormones incorporating iodine that was recently taken up, not iodine that was stored for a longer time (last-come, first-served principle of thyroid iodine release) (25). Therefore, it might be that the administration of rhTSH before radioiodine therapy increases the release of radiolabeled thyroid hor-

mones from the thyroid into the circulation. It has been argued that such an increase in radiolabeled thyroid hormones in the serum ( $\text{PB}^{131}\text{I}$ ) might outweigh the advantage of a reduction in radioiodine dose after rhTSH pretreatment (26). Our measurements were reassuring, because no significant difference in the time course of circulating  $\text{PB}^{131}\text{I}$  levels was observed between the rhTSH-pretreated groups and the control groups and because the cumulated  $\text{PB}^{131}\text{I}$  activities did not differ significantly between pretreated and control groups. This is in accordance with our thyroid RAIU measurements after radioiodine therapy, which showed no significant difference in effective half-times of  $^{131}\text{I}$  in the thyroid between rhTSH-pretreated patients and control patients.

During the first days after radioiodine therapy, the amount of  $\text{PB}^{131}\text{I}$  was still low and the total  $^{131}\text{I}$  activity in serum was determined predominantly by the amount of inorganic  $^{131}\text{I}$  in the serum. During these first days, we measured much higher total  $^{131}\text{I}$  activities in the control groups than in the rhTSH-pretreated groups. The difference at 24 h after radioiodine therapy exceeded by far the difference in therapeutic dose of radioiodine between rhTSH-pretreated groups and control groups, because the higher uptake of inorganic  $^{131}\text{I}$  by the thyroid in the pretreated groups increased the removal rate of radioiodine from the circulation into the thyroid, whereas the removal rate to the urinary compartment was the same in both pretreated and control groups. This finding is in accordance with the iodine biokinetic model of Robertson and Gorman (14).

## CONCLUSION

After pretreatment with a single, low dose of rhTSH, radioiodine therapy—of a dose reduced in accord with the rhTSH-induced increase in 24-h RAIU—caused lower radiation-absorbed doses in extrathyroidal organs and tissues, especially in the bladder and stomach, of patients with nodular goiter. No significant increase in the release of  $^{131}\text{I}$ -labeled thyroid hormones from the thyroid into the circulation was observed after radioiodine therapy in rhTSH-pretreated patients. Thus, this mode of therapy can be recommended, especially when the dose of radioiodine to be administered without rhTSH pretreatment is high.

## REFERENCES

- Hegedüs L, Hansen BM, Knudsen N, Hansen JM. Reduction of size of thyroid with radioactive iodine in multinodular non-toxic goitre. *Br Med J*. 1988;297:661–662.
- Nygaard B, Hegedüs L, Gervil M, Hjalgrim H, Soe-Jensen P, Hansen JM. Radioiodine treatment of multinodular non-toxic goitre. *Br Med J*. 1993;307:828–832.
- Huysmans DAKC, Hermus ARMM, Corstens FHM, Barents JO, Kloppenburg PWC. Large, compressive goiters treated with radioiodine. *Ann Intern Med*. 1994;121:757–762.
- Wesche MF, Tiel-v Buul MM, Smits NJ, Wiersinga WM. Reduction in goiter size by  $^{131}\text{I}$  therapy in patients with non-toxic multinodular goiter. *Eur J Endocrinol*. 1995;132:86–87.
- de Klerk JMH, van Isselt JW, van Dijk A, et al. Iodine-131 therapy in sporadic nontoxic goiter. *J Nucl Med*. 1997;38:372–376.
- Bonnema SJ, Bertelsen H, Mortensen J, et al. The feasibility of high dose iodine

- 131 treatment as an alternative to surgery in patients with a very large goiter: effect on thyroid function and size and pulmonary function. *J Clin Endocrinol Metab.* 1999;84:3636–3641.
7. Wesche MFT, Tiel-v Buul MMC, Lips P, Smits NJ, Wiersinga WM. A randomized trial comparing levothyroxine with radioactive iodine in the treatment of sporadic nontoxic goiter. *J Clin Endocrinol Metab.* 2001;86:998–1005.
  8. Huysmans D, Hermus A, Edelbroek M, Barentz J, Corstens F, Kloppenborg P. Radioiodine for nontoxic multinodular goiter. *Thyroid.* 1997;7:235–239.
  9. Hermus AR, Huysmans DA. Treatment of benign nodular thyroid disease. *N Engl J Med.* 1998;338:1438–1447.
  10. Huysmans DAKC, Buijs WCAM, van de Ven MTP, et al. Dosimetry and risk estimates of radioiodine therapy for large, multinodular goiters. *J Nucl Med.* 1996;37:2072–2079.
  11. Huysmans DA, Nieuwlaat W-A, Erdtsieck RJ, et al. Administration of a single low dose of recombinant human thyrotropin significantly enhances thyroid radioiodide uptake in nontoxic nodular goiter. *J Clin Endocrinol Metab.* 2000;85:3592–3596.
  12. Nieuwlaat W-A, Hermus AR, Sivo-Pmdelj F, Corstens FH, Huysmans DA. Pretreatment with recombinant human thyrotropin changes the regional distribution of radioiodine on thyroid scintigrams of nodular goiters. *J Clin Endocrinol Metab.* 2001;86:5330–5336.
  13. Nieuwlaat W-A, Huysmans DA, van den Bosch HC, et al. Pretreatment with a single, low dose of recombinant human thyrotropin allows dose reduction of radioiodine therapy in patients with nodular goiter. *J Clin Endocrinol Metab.* 2003;88:3121–3129.
  14. Robertson JS, Gorman CA. Gonadal radiation dose and its genetic significance in radioiodine therapy in hyperthyroidism. *J Nucl Med.* 1976;17:826–835.
  15. DeGroot LJ. Graves' disease diagnosis and treatment: multinodular goitre. In: DeGroot LJ, Stanbury JB, eds. *The Thyroid and Its Diseases*. 4th ed. New York, NY: Wiley; 1975:314–367, 637–665.
  16. Doering P, Kramer K. The determination of thyroid weight with scintigraphy after administration of radioiodine: a contribution to radionuclide dosing [in German]. *Strahlenther.* 1958;105:245–259.
  17. Keating FR, Power MH, Berkson J, et al. The urinary excretion of radioiodine in various thyroid states. *J Clin Invest.* 1947;26:1138–1151.
  18. Loevinger R, Berman M. A schema for absorbed-dose dose calculation for biologically distributed radionuclides. Medical Internal Radiation Dose Committee (MIRD) Pamphlet No. 1. *J Nucl Med.* 1968;9(suppl 1):7–14.
  19. 1990 Recommendations of the International Commission on Radiological Protection. Oxford, U.K.: Pergamon Press; 1991. ICRP Publication 60.
  20. Holm LE, Hall P, Wiklund K, et al. Cancer risk after iodine-131 therapy for hyperthyroidism. *J Natl Cancer Inst.* 1991;83:1072–1077.
  21. Hall P, Berg G, Bjelkengren G, et al. Cancer mortality after iodine-131 therapy for hyperthyroidism. *Int J Cancer.* 1992;50:886–890.
  22. Hoffman DA, McConahey WM, Fraumeni JF, Kurland LT. Cancer incidence following treatment of hyperthyroidism. *Int J Epidemiol.* 1982;11:218–224.
  23. Hoffman DA, McConahey WM. Breast cancer following iodine-131 therapy for hyperthyroidism. *J Natl Cancer Inst.* 1983;70:63–67.
  24. Goldman MB, Maloof F, Monson RR, et al. Radioactive iodine therapy and breast cancer: follow-up study of hyperthyroid women. *Am J Epidemiol.* 1988;127:969–980.
  25. Taurog AM. Hormone synthesis: thyroid iodine metabolism. In: Braverman LE, Utiger RD, eds. *Werner and Ingbar's The Thyroid*. 8th ed. Philadelphia, PA: Lippincott, Williams & Wilkins; 2000:61–85.
  26. Hennemann G. Report of the 74th annual meeting of the American Thyroid Association. *Thyroid International.* 2003;1:8.







The Journal of  
NUCLEAR MEDICINE

## **Dosimetry of Radioiodine Therapy in Patients with Nodular Goiter After Pretreatment with a Single, Low Dose of Recombinant Human Thyroid-Stimulating Hormone**

Willy-Anne Nieuwlaat, Ad R. Hermus, H. Alec Ross, Wilhelmina C. Buijs, Michela A. Edelbroek, Jo W. Bus, Frans H. Corstens and Dyde A. Huysmans

*J Nucl Med.* 2004;45:626-633.

---

This article and updated information are available at:  
<http://jnm.snmjournals.org/content/45/4/626>


---

Information about reproducing figures, tables, or other portions of this article can be found online at:  
<http://jnm.snmjournals.org/site/misc/permission.xhtml>

Information about subscriptions to JNM can be found at:  
<http://jnm.snmjournals.org/site/subscriptions/online.xhtml>

*The Journal of Nuclear Medicine* is published monthly.  
SNMMI | Society of Nuclear Medicine and Molecular Imaging  
1850 Samuel Morse Drive, Reston, VA 20190.  
(Print ISSN: 0161-5505, Online ISSN: 2159-662X)

© Copyright 2004 SNMMI; all rights reserved.

 SOCIETY OF  
NUCLEAR MEDICINE  
AND MOLECULAR IMAGING