

# PET-Measured Responses of MBF to Cold Pressor Testing Correlate with Indices of Coronary Vasomotion on Quantitative Coronary Angiography

Thomas H. Schindler, MD<sup>1,2</sup>; Egbert U. Nitzsche, MD<sup>2</sup>; Manfred Olschewski, MSc<sup>3</sup>; Ingo Brink, MD<sup>2</sup>; Michael Mix, MSc, PhD<sup>2</sup>; John Prior, MD, PhD<sup>1</sup>; Alvaro Facta, MD<sup>1</sup>; Massayuki Inubushi, MD, PhD<sup>1</sup>; Hanjoerg Just, MD<sup>2</sup>; and Heinrich R. Schelbert, MD, PhD<sup>1</sup>

<sup>1</sup>Department of Molecular and Medical Pharmacology, David Geffen School of Medicine at UCLA, University of California, Los Angeles, California; <sup>2</sup>Division of Cardiology and Nuclear Medicine, Medical Clinic III, University Hospital of Albert Ludwigs University, Freiburg, Germany; and <sup>3</sup>Department of Medical Statistics and Biometry, Albert Ludwigs University, Freiburg, Germany

The aims of this study were to determine whether responses in myocardial blood flow (MBF) to the cold pressor testing (CPT) method noninvasively with PET correlate with an established and validated index of flow-dependent coronary vasomotion on quantitative angiography. **Methods:** Fifty-six patients ( $57 \pm 6$  y; 16 with hypertension, 10 with hypercholesterolemia, 8 smokers, and 22 without coronary risk factors) with normal coronary angiograms were studied. Biplanar end-diastolic images of a selected proximal segment of the left anterior descending artery (LAD) ( $n = 27$ ) or left circumflex artery (LCx) ( $n = 29$ ) were evaluated with quantitative coronary angiography in order to determine the CPT-induced changes of epicardial luminal area (LA, mm<sup>2</sup>). Within 20 d of coronary angiography, MBF in the LAD, LCx, and right coronary artery territory was measured with <sup>13</sup>N-ammonia and PET at baseline and during CPT. **Results:** CPT induced on both study days comparable percent changes in the rate  $\times$  pressure product (% $\Delta$ RPP,  $37\% \pm 13\%$  and  $40\% \pm 17\%$ ;  $P =$  not significant [NS]). For the entire study group, the epicardial LA decreased from  $5.07 \pm 1.02$  to  $4.88 \pm 1.04$  mm<sup>2</sup> ( $\Delta$ LA,  $-0.20 \pm 0.89$  mm<sup>2</sup>) or by  $-2.19\% \pm 17\%$ , while MBF in the corresponding epicardial vessel segment increased from  $0.76 \pm 0.16$  to  $1.03 \pm 0.33$  mL  $\cdot$  min<sup>-1</sup>  $\cdot$  g<sup>-1</sup> ( $\Delta$ MBF,  $0.27 \pm 0.25$  mL  $\cdot$  min<sup>-1</sup>  $\cdot$  g<sup>-1</sup>) or  $36\% \pm 31\%$  ( $P \leq 0.0001$ ). However, in normal controls without coronary risk factors ( $n = 22$ ), the epicardial LA increased from  $5.01 \pm 1.07$  to  $5.88 \pm 0.89$  mm<sup>2</sup> ( $19.06\% \pm 8.9\%$ ) and MBF increased from  $0.77 \pm 0.16$  to  $1.34 \pm 0.34$  mL  $\cdot$  min<sup>-1</sup>  $\cdot$  g<sup>-1</sup> ( $74.08\% \pm 23.5\%$ ) during CPT, whereas patients with coronary risk factors ( $n = 34$ ) revealed a decrease of epicardial LA from  $5.13 \pm 1.48$  to  $4.24 \pm 1.12$  mm<sup>2</sup> ( $-15.94\% \pm 12.2\%$ ) and a diminished MBF increase (from  $0.76 \pm 0.20$  to  $0.83 \pm 0.25$  mL  $\cdot$  min<sup>-1</sup>  $\cdot$  g<sup>-1</sup> or  $10.91\% \pm 19.8\%$ ) as compared with controls ( $P < 0.0001$ , respectively), despite comparable changes in the RPP ( $P =$  NS). In addition, there was a significant correlation ( $r = 0.87$ ;  $P \leq 0.0001$ ) between CPT-

related percent changes in LA on quantitative angiography and in MBF as measured with PET. **Conclusion:** The observed close correlation between an angiographically established parameter of flow-dependent and, most likely, endothelium-mediated coronary vasomotion and PET-measured MBF further supports the validity and value of MBF responses to CPT as a noninvasively available index of coronary circulatory function.

**Key Words:** blood flow; cold pressor test; endothelium, PET; vasoconstriction

**J Nucl Med 2004; 45:419–428**

**T**he vascular endothelium plays an important role in the regulation of coronary circulatory function and in preserving the structural and functional integrity of the vascular wall (1). The antithrombotic and antiatherosclerotic effect of the endothelium is essential for normal function (1,2). An abnormal endothelium-dependent coronary vasomotion has therefore been found to be an independent predictor of coronary artery disease (CAD) and of coronary events (3–5). Several invasive approaches for the evaluation of endothelial function are available (1). They require quantitative angiography and intracoronary flow velocity probes for measuring changes in coronary flow in response to acetylcholine-stimulated endothelial release of nitric oxide (NO) or flow-dependent changes of the lumen of the epicardial conduit vessels (1,6). For the latter approach, changes in coronary blood flow are induced either by intracoronary administration of papavarine or adenosine or by sympathetic stimulation with cold pressor testing (CPT) (1–4,6).

Changes in the luminal area (LA) of the epicardial vessels during CPT were found to significantly correlate with changes in coronary blood flow, suggesting that information on flow-dependent endothelium-mediated coronary vasomotor function can be derived from measurements of cor-

Received Jun. 19, 2003; revision accepted Oct. 29, 2003.

For correspondence or reprints contact: Heinrich R. Schelbert, MD, PhD, Department of Molecular and Medical Pharmacology, David Geffen School of Medicine at UCLA, B2-085J CHS: Box 95648, Los Angeles, CA 90095-6948. E-mail: [hschelbert@mednet.ucla.edu](mailto:hschelbert@mednet.ucla.edu)

onary blood flow (6–8). However, the invasive nature of the measurements precludes a more widespread clinical use (7–10). Measurements of myocardial blood flow (MBF) and its response to sympathetic stimulation with CPT are now possible with PET and may offer a noninvasive means of probing endothelium-dependent coronary vasomotion and thus provide important diagnostic and prognostic information (6,11,12).

The aims of this study were to define (a) the relationship between hemodynamic responses to CPT and LA changes of the epicardial conduit vessels; (b) responses of MBF to increases in the rate  $\times$  pressure product (RPP); and (c) the correlation between responses of the epicardial conduit vessel LA, as a measure of flow-dependent vasomotion, and the responses of MBF as determined with PET.

## MATERIALS AND METHODS

### Study Population and Study Design

Fifty-six patients (mean age,  $57 \pm 6$  y; 33 men, 23 women) referred for diagnostic cardiac catheterization for evaluation of atypical chest pain and with normal coronary angiograms, as defined by the absence of angiographic evidence for CAD, were studied. Each patient underwent quantitative coronary angiography (QCA) at baseline and during CPT for measurement of the epicardial LA (9,10,13) and, within 20 d (mean  $11 \pm 6$  d), PET measurements of MBF at baseline and during CPT (14,15) (Fig. 1). All patients had normal wall motion on left ventriculography ( $n = 45$ ) or on echocardiography ( $n = 11$ ). None had a history of acute coronary syndrome including myocardial infarction or lead hypertrophic obstructive and nonobstructive cardiomyopathy, congestive heart failure, malignant hypertension, valvular heart disease, or significant endocrine, hepatic, renal, or inflammatory disease. Four of 16 hypertensive patients required antihypertensive therapy and none of the hypercholesterolemic patients was on HMG-CoA reductase inhibitor treatment at the time of the study. The study was approved by the Ethics Committee of the University of Freiburg. All participants gave written informed consent.

### Patient Subgroups

Based on changes in epicardial LA with CPT, the study participants were grouped into normal controls and at-risk patients.

**Control Group.** Twenty-two patients (14 men, 8 women; 37–65 y; mean age,  $56 \pm 9$  y) without coronary risk factors including history of hypertension ( $\geq 140/90$  mm Hg), smoking, diabetes, or hypercholesterolemia (total serum cholesterol values,  $\geq 240$  mg/dL) and all with CPT-induced dilation of the epicardial vessels (percent change of LA [ $\Delta$ LA]  $> 0\%$ ) on angiography were defined as normal (9,10). None had a family history for CAD defined by evidence for CAD in a parent or sibling  $< 60$  y of age at the time of diagnosis.

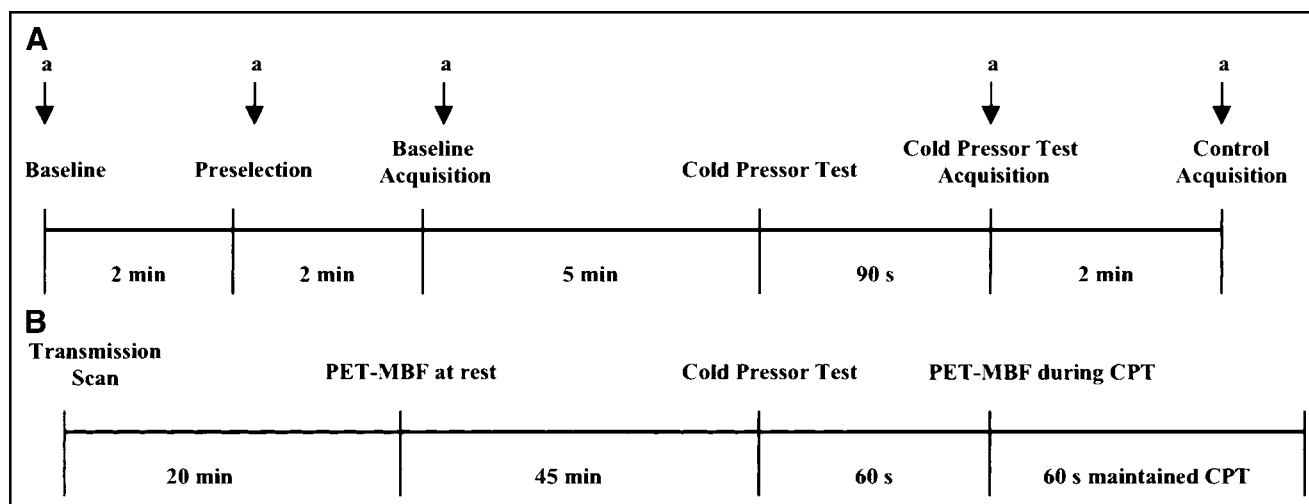
**At-Risk Group.** Thirty-four patients (19 men, 15 women; mean age,  $56 \pm 10$  y) with coronary risk factors and with a decrease in LA during CPT ( $\Delta$ LA  $\leq 0\%$ ) on angiography were defined as abnormal responders (9,10). Sixteen had hypertension (systolic blood pressure,  $\geq 145$  mm Hg), 10 had hypercholesterolemia (cholesterol,  $\geq 263 \pm 10$  mg/dL), and 8 were long-term smokers (33  $\pm$  8 pack-years). A family history for CAD was present in 5 patients with hypertension, 3 patients with hypercholesterolemia, and 2 chronic smokers.

### Study Protocol

All patients were studied first with quantitative angiography and within 20 d with PET. Each patient was carefully screened by obtaining a complete history and by physical examination and laboratory analyses. Vasoactive medications including calcium-channel blockers, angiotensin-converting enzyme inhibitors, long-acting nitrates, and  $\beta$ -blockers were withheld for at least 24 h before the QCA and the PET study.

### QCA

All patients underwent routine diagnostic catheterization for evaluation of chest pain using a biplanar, isocentric multidirectional digital angiographic system (BICOR-HICOR; Siemens) (13) (Fig. 1). A prerequisite for inclusion in the study was the absence of angiographically significant CAD, as indicated by smooth coronary vessels without evidence of luminal wall irregularities or diffuse caliber reduction and stenosis. After routine coronary angiography, a control angiogram was performed to select the best



**FIGURE 1.** Study protocol. (A) Study inclusion at coronary angiography and quantitative assessment of epicardial vasoreactivity during CPT. a = angiogram. (B) Within 20 d of study inclusion MBF assessment with PET at rest and during CPT.

acquisition angulation for coronary angiography at baseline and during CPT for measurements of the LA of the selected epicardial vessel segment (Fig. 1). The coronary arteries studied were positioned near the isocenter. Care was taken to avoid overlapping of coronary segments. Thus, a relatively straight 4- to 8-mm-long segment of the left anterior descending artery (LAD) (27 patients) or left circumflex coronary artery (LCx) (29 patients) was preselected and a coronary angiogram was obtained at baseline. For the CPT, the patient immersed the left hand in ice water for 90 s when a second angiogram was acquired while—as described previously (3,9,16,17)—the CPT was continued for another 10 s. End-diastolic images of coronary arteries on biplanar views at baseline and after CPT were analyzed quantitatively (13). An automatic contour detection of the coronary artery segment was used using a geometric edge differentiation technique. Tapered or tortuous segments were not used. The LA of the coronary segment of interest was measured in both views of the images using the take-off of side branches as anatomic landmarks for identification of corresponding vessel segments. Estimation of the LA assumed an elliptic shape at baseline and after CPT (7,9,13). Calculation of the radiologic magnification factor of the measured segment was used for scaling of the data from pixels to millimeters (13). Thus, the epicardial LA as an endpoint of the measurements was determined at baseline and during CPT and the epicardial vasomotor response was quantified (Fig. 1). Accuracy, reproducibility, and inter- and intraobserver variability of the measurements have been reported previously (6,9,13).

### PET Study Protocol

Regional MBF was measured with intravenous  $^{13}\text{N}$ -ammonia and serial image acquisition by PET (951 ECAT-HR; Siemens) (14,15). Measurements were performed first at baseline and then during CPT (Fig. 1). For the CPT, study participants immersed the left hand in ice water for 60 s, and  $^{13}\text{N}$ -ammonia was injected again while CPT was continued for another 60 s to permit trapping of  $^{13}\text{N}$ -ammonia in the myocardium (18). Beginning with each  $^{13}\text{N}$ -ammonia administration (555–740 MBq [15–20 mCi]), serial transaxial emission images were acquired (12 frames of 10 s each, 2 frames of 30 s each, and 1-frame of 900 s) (14,15). The serially acquired transaxial image data were then reoriented into short-axis slices. The 900-s short-axis cuts were examined visually on the last frame for the regional myocardial tracer activity concentrations at baseline and during CPT. Time–activity curves were generated from the first 12 serially acquired short-axis slices after assigning, on 3 midventricular slices, myocardial regions of interest to the territories of the LAD and LCx and of the right coronary artery (14,15). A small, 25-mm<sup>2</sup> region of interest was assigned to the left ventricular blood pool. The myocardial and blood-pool time–activity curves were fitted with a previously validated 2-compartment tracer kinetic model and estimates of MBF (in  $\text{mL} \cdot \text{min}^{-1} \cdot \text{g}^{-1}$ ) were obtained (14,15). Heart rate, blood pressure, and a 12-lead electrocardiogram were recorded continuously. From the average of heart rate and blood pressure during the first 2 min of each image acquisition, the RPP was determined as an index of cardiac work. An index of coronary vascular resistance was calculated as the ratio of mean arterial blood pressure (mm Hg) to MBF ( $\text{mL} \cdot \text{min}^{-1} \cdot \text{g}^{-1}$ ).

### Statistical Analysis

Data are presented as mean  $\pm$  SD for quantitative and absolute frequencies for qualitative variables. For comparison of differences, appropriate Wilcoxon rank sum tests for independent or

paired samples were used (SAS Institute). The Pearson correlation coefficient ( $r$ ), assuming a linear regression, was calculated to investigate the associations between CPT-induced changes of epicardial LA and MBF responses. Differences of  $P < 0.05$  were considered significant.

## RESULTS

### Patient Characteristics

Table 1 summarizes the baseline characteristics of the 2 study groups and lists hemodynamic parameters and findings on quantitative angiography and on MBF at baseline and during CPT. Of the 56 patients, 18 (32%) experienced chest pain during CPT at the time of cardiac catheterization, whereas 14 patients (25%) reported atypical chest pain during CPT at the time of the PET MBF study.

### Hemodynamics

Hemodynamic parameters during angiographic assessment of epicardial coronary vasomotion, during PET measurements of MBF at baseline, and during CPT are listed in Table 2. The RPP was used as an index of cardiac work and as a measure of the effectiveness of sympathetic stimulation with CPT. Heart rate and blood pressure were similar at baseline and during CPT on the 2 study days ( $P =$  not significant [NS]). During CPT, heart rate and systolic and diastolic blood pressure significantly increased (both  $P < 0.05$ ) so that the RPP was significantly higher during CPT than at baseline. Importantly, the RPP at the time of the angiographic study and of the PET study was similar both at baseline ( $6,674 \pm 995$  vs.  $6,636 \pm 1,221$ ) and during CPT ( $9,146 \pm 1,431$  vs.  $9,199 \pm 1,634$ ;  $P =$  NS, respectively). In addition, there were no significant differences in the percent change of the RPP ( $\%\Delta\text{RPP}$ ) in response to CPT during coronary angiography and MBF evaluation with PET ( $\%\Delta\text{RPP}$ ,  $37\% \pm 17\%$  vs.  $40\% \pm 21\%$ ;  $P =$  NS), indicating comparable myocardial workload on both study days.

### Findings on Quantitative Angiography

Figure 2 illustrates an example of a normal angiographic response to CPT in a normal control. The panel depicts a normal angiogram in the right anterior oblique (RAO) projection at baseline and during CPT. The epicardial vessel diameter has increased during CPT as compared with baseline. QCA of the LAD segment demonstrates an increase in luminal vessel diameter from 2.0 to 2.5 mm. The corresponding PET measurements demonstrated an increase in MBF from  $0.78$  to  $1.36 \text{ mL} \cdot \text{min}^{-1} \cdot \text{g}^{-1}$  during CPT. Figure 3 depicts an abnormal angiographic response to CPT in a long-term smoker. Again, the upper panel depicts the coronary angiogram in the left anterior oblique (LAO) projection at baseline and during CPT. However, the epicardial vessel diameter is seen to decrease from baseline to CPT, indicating an abnormal endothelium-dependent epicardial vascular response to CPT. QCA of the LAD segment reveals a decrease of the luminal vessel diameter from 1.89 to 1.57 mm (Figs. 3C and 3D). The corresponding PET measurements revealed a markedly attenuated MBF response to

**TABLE 1**  
Characteristics of Study Population

Characteristic	Control group (n = 22)	At-risk group (n = 34)
Age (y)	57 ± 6	56 ± 6
Sex (F/M)	14/8	19/15
Hypertension	0	16
Hypercholesterolemia	0	10
Smoking	0	8
Lipid status		
Serum cholesterol level (mg/dL)	186 ± 50	218 ± 40*
Serum LDL level (mg/dL)	114 ± 40	144 ± 24*
Serum HDL level (mg/dL)	53 ± 12	47 ± 12
Triglyceride level	125 ± 38	140 ± 52
Glucose level (mg/dL)	88 ± 7	95 ± 15
Epicardial LA (mm <sup>2</sup> )		
Before CPT	5.01 ± 1.07	5.13 ± 1.49
After CPT	5.88 ± 0.89	4.24 ± 1.12
% Change	19 ± 9	-16 ± 12*
MBF (mL · g <sup>-1</sup> · min <sup>-1</sup> )		
Before CPT	0.77 ± 0.16	0.76 ± 0.20
After CPT	1.34 ± 0.34	0.83 ± 0.25
% Change	74 ± 23	11 ± 19*
Coronary vascular resistance (mm Hg/mL · g <sup>-1</sup> · min <sup>-1</sup> )		
Before CPT	114 ± 23	122 ± 27
After CPT	80 ± 14	128 ± 32
% Change	-43 ± 13	6 ± 17*

\* $P < 0.001$  vs. normal controls.

LDL = low-density lipoprotein; HDL = high-density lipoprotein.

Values are mean ± SD.

CPT; MBF was  $0.51 \text{ mL} \cdot \text{min}^{-1} \cdot \text{g}^{-1}$  at baseline and  $0.61 \text{ mL} \cdot \text{min}^{-1} \cdot \text{g}^{-1}$  during CPT and, therefore, increased by only 20%, implying that the abnormal endothelium-dependent vasomotion in this patient was not confined to the epicardial vessels but extended into the microcirculation.

Table 1 summarizes the findings on QCA. At baseline, the average epicardial LA was similar in normal controls and in at-risk patients ( $P = \text{NS}$ ). During CPT however, the

epicardial LA had decreased in the at-risk patients from  $5.13 \pm 1.49$  to  $4.24 \pm 1.12 \text{ mm}^2$  ( $P < 0.0001$ ), representing an average  $-16\% \pm 12\%$  decrease. The normal controls, however, demonstrated a flow-mediated increase of the average LA from  $5.01 \pm 1.07$  to  $5.88 \pm 0.89 \text{ mm}^2$  ( $P < 0.0001$ ), representing a  $19\% \pm 9\%$  increase. During CPT, the LA change in the at-risk group differed significantly from that in the control subjects ( $P < 0.0001$ ).

**TABLE 2**  
Hemodynamics in QCA and PET Studies at Rest and During CPT

Test	QCA		PET	
	Rest	CPT	Rest	CPT
HR (bpm)	62 ± 8	67 ± 7*	60 ± 9	66 ± 10†
SBP (mm Hg)	108 ± 13	136 ± 17*	111 ± 11	139 ± 17†
DBP (mm Hg)	75 ± 12	81 ± 9*	73 ± 8	81 ± 8†
RPP	6,674 ± 995	9,146 ± 1,431*	6,636 ± 1,221	9,199 ± 1,634†
%ΔRPP		37 ± 17*		40 ± 21†
MAP (mm Hg)	87 ± 6	100 ± 7*	86 ± 5	101 ± 7†

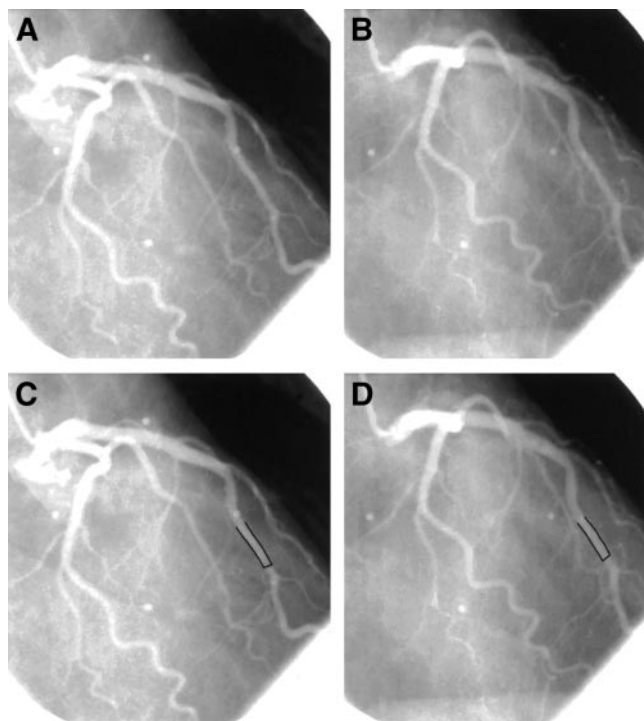
\* $P \leq 0.0001$ , CPT vs. rest for each corresponding hemodynamic parameter in QCA study evaluation.

† $P \leq 0.0001$ , CPT vs. rest for each corresponding hemodynamic parameter in PET study evaluation.

HR = heart rate; SBP = systolic blood pressure; DBP = diastolic blood pressure; RPP = systolic blood pressure × heart rate; %ΔRPP = percent change of RPP from rest during CPT; MAP = mean arterial blood pressure.

Values are mean ± SD.





**FIGURE 2.** (A) Normal coronary angiogram of the left coronary tree in the RAO view of a control patient. (B) Corresponding coronary angiogram during sympathetic activation by CPT. (C and D) Quantitative coronary angiographic evaluation of the proximal-mid LAD segment at rest (mean diameter, 2.0 mm) (C) and during CPT (mean diameter, 2.5 mm) (D).

The abnormal flow-mediated epicardial vascular response to an increase in myocardial demand during CPT in the at-risk patients was also evident when the data were plotted so that changes in epicardial LA were compared with increases in the RPP. Figure 4 depicts a significant correlation between percent changes in epicardial LA and the percent change in the RPP during CPT for the normal controls ( $r = 0.82$ ;  $P < 0.0001$ ); no such correlation was observed in the at-risk patients ( $r = 0.08$ ;  $P = \text{NS}$ ), implying an uncoupling of the epicardial vascular response from an increase in demand during stimulation.

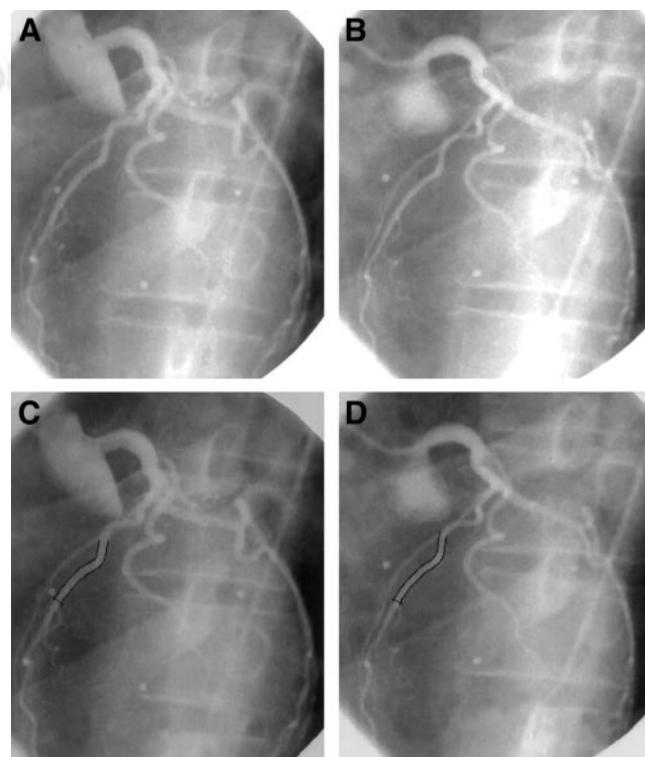
#### MBF Responses to CPT

Visual inspection and polar map analysis of the  $^{13}\text{N}$ -ammonia distribution at baseline and during CPT revealed homogeneous tracer uptake in all study participants. There were no CPT-induced regional myocardial perfusion defects. PET-measured MBFs in the coronary artery territory supplied by the epicardial vessel analyzed on angiography were at baseline similar for at-risk and normal control patients ( $0.76 \pm 0.20 \text{ mL} \cdot \text{min}^{-1} \cdot \text{g}^{-1}$  vs.  $0.77 \pm 0.16 \text{ mL} \cdot \text{min}^{-1} \cdot \text{g}^{-1}$ ;  $P = 0.76$ ; Table 1). However, MBF during CPT was lower in the at-risk patients than in the control subjects ( $0.76 \pm 0.20$  to  $0.83 \pm 0.25 \text{ mL} \cdot \text{min}^{-1} \cdot \text{g}^{-1}$  vs.  $0.77 \pm 0.16$  to  $1.34 \pm 0.34 \text{ mL} \cdot \text{min}^{-1} \cdot \text{g}^{-1}$ ;  $P \leq 0.0001$ ; Table 1). MBF during CPT was thus significantly higher than baseline in the normal control but not in the at-risk

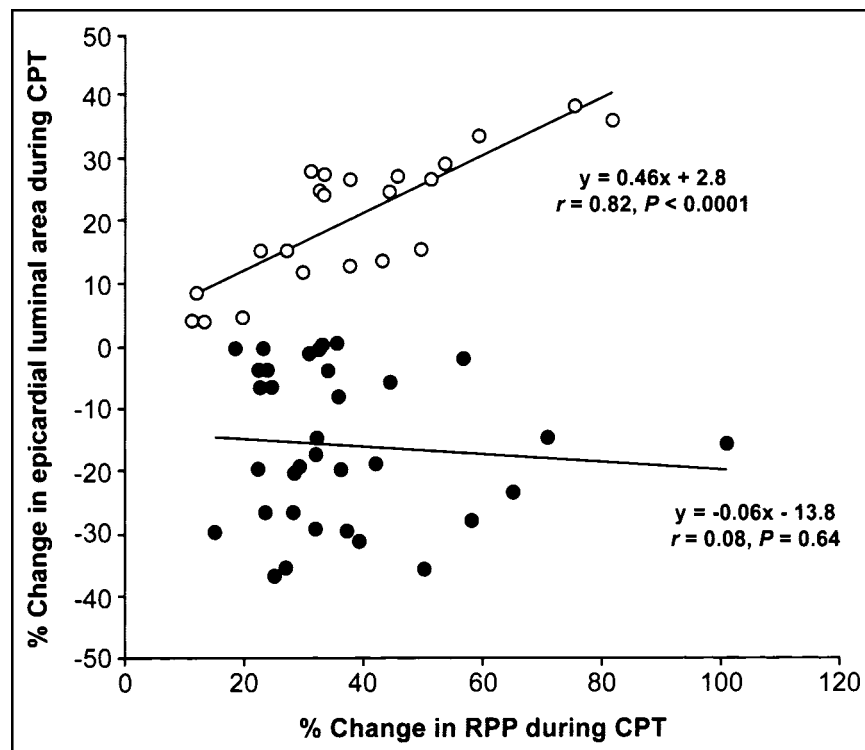
patients. Moreover, average MBFs in the 2 coronary territories supplied by vessels not evaluated on quantitative angiography were similar to MBFs in coronary territories subtended by coronary vessels submitted to quantitative analysis. No significant differences were noted during CPT (at-risk patients,  $0.76 \pm 0.17$  to  $0.83 \pm 0.20 \text{ mL} \cdot \text{min}^{-1} \cdot \text{g}^{-1}$  vs.  $0.76 \pm 0.20$  to  $0.83 \pm 0.25 \text{ mL} \cdot \text{min}^{-1} \cdot \text{g}^{-1}$ ; controls,  $0.75 \pm 0.20$  to  $1.32 \pm 0.31 \text{ mL} \cdot \text{min}^{-1} \cdot \text{g}^{-1}$  vs.  $0.77 \pm 0.16$  to  $1.34 \pm 0.34 \text{ mL} \cdot \text{min}^{-1} \cdot \text{g}^{-1}$ , respectively;  $P = \text{NS}$ ), suggesting that the vasomotor abnormality in the at-risk patients affected the coronary circulation homogeneously.

MBF responses relative to the CPT-induced changes in the RPP greatly differed between the 2 study groups. This difference is illustrated in Figure 5, where the CPT-induced increase in the RPP is associated with a proportionate increase in MBF in the normal controls ( $r = 0.87$ ;  $P < 0.0001$ ), whereas changes in the RPP no longer correlate with changes in MBF ( $r = 0.26$ ;  $P = 0.13$ ) in at-risk patients, implying an uncoupling of abnormal endothelium-dependent coronary vasomotion from the CPT-induced metabolic demand.

In order to account for interindividual variations in the coronary driving pressure, an index of coronary vascular



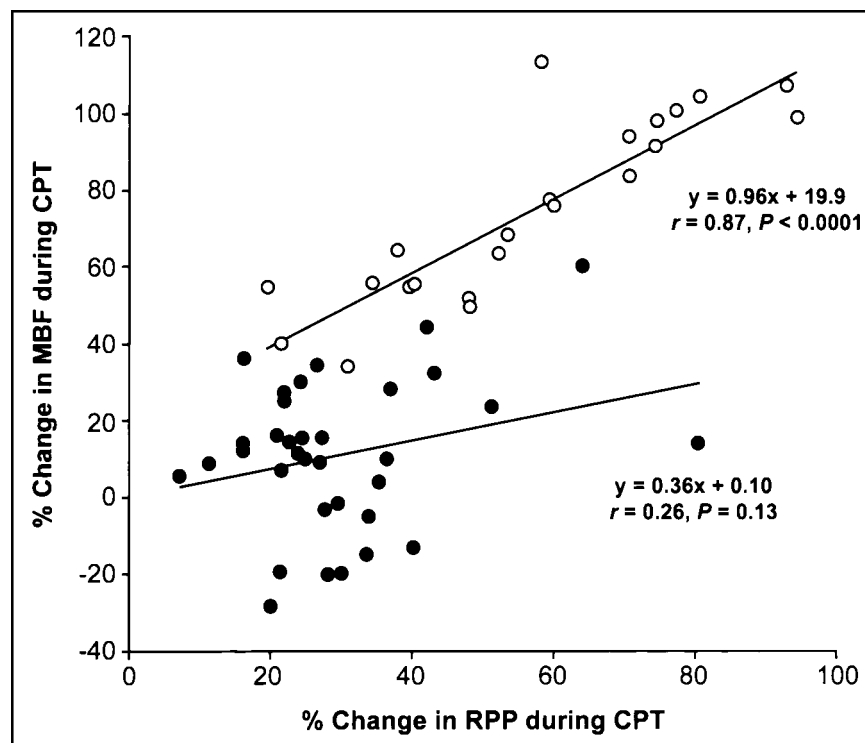
**FIGURE 3.** (A) Normal coronary angiogram of the left coronary artery tree in the LAO view in a chronic smoker at baseline. (B) Corresponding coronary angiogram during sympathetic activation by CPT. (C and D) Quantitative coronary angiographic evaluation of the proximal-mid LAD segment at rest (mean diameter, 1.89 mm) (C) and during CPT (mean diameter, 1.57 mm) (D).



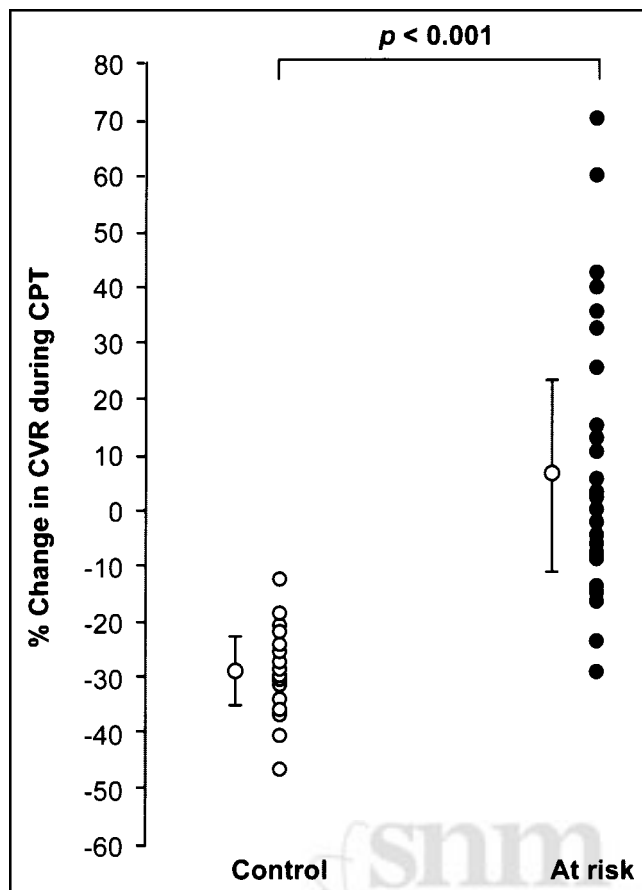
**FIGURE 4.** Correlation of CPT-induced change in RPP and epicardial LA in normal control patients (○) and in the group at risk for CAD (●), demonstrating a significant correlation in normal patients but no relation for patients at risk for CAD.

resistance was calculated as the ratio of mean arterial blood pressure to MBF. At baseline, the index was similar for controls and patients at-risk ( $114 \pm 23$  vs.  $122 \pm 26$  mm Hg/mL  $\cdot$  min $^{-1}$   $\cdot$  g $^{-1}$ ;  $P = 0.61$ ; Table 1). During CPT, coronary vascular resistance consistently declined in the

normal controls, which was different from the responses in at-risk patients; they were highly variable and paradoxically increased in some patients. Mean values of the resistance index in the normal controls and the at-risk patients were  $114 \pm 23$  to  $80 \pm 14$  mm Hg/mL  $\cdot$  min $^{-1}$   $\cdot$  g $^{-1}$  and  $122 \pm$



**FIGURE 5.** Correlation of CPT-induced change in RPP and regional MBF in normal control patients (○) and in the group at risk for CAD (●), revealing a significant correlation in normal patients but no relation for patients at risk for CAD.



**FIGURE 6.** Percent change of CVR in the control group and in patients at risk for CAD.

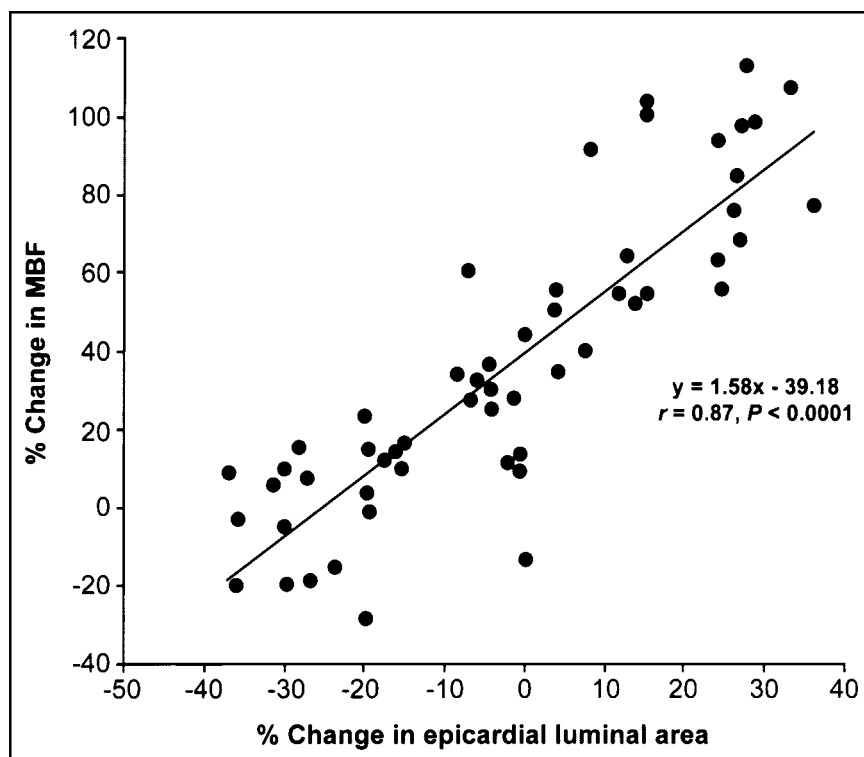
26 to  $128 \pm 32$  mm Hg/mL  $\cdot$  min $^{-1}$   $\cdot$  g $^{-1}$ ;  $P < 0.001$ ; Table 1). Figure 6 illustrates the percent change of coronary vascular resistance (CVR) for each patient during CPT.

#### Correlation Between Coronary Angiographic and PET Measurements

For the entire study group, the epicardial LA decreased from  $5.07 \pm 1.02$  to  $4.88 \pm 1.04$  mm $^2$  ( $\Delta$ LA,  $-0.20 \pm 0.89$  mm $^2$ ) or by  $-2.19\% \pm 17\%$  ( $P = 0.19$ ), whereas MBF increased from  $0.76 \pm 0.16$  to  $1.03 \pm 0.33$  mL  $\cdot$  min $^{-1}$   $\cdot$  g $^{-1}$  ( $\Delta$ MBF,  $0.27 \pm 0.25$  mL  $\cdot$  min $^{-1}$   $\cdot$  g $^{-1}$ ) or by  $36\% \pm 31\%$  ( $P \leq 0.0001$ ). In order to examine a possible relationship between CPT-induced epicardial and arteriolar vasomotion, the change in epicardial LA was compared with the CPT-induced change of MBF. As Figure 7 illustrates, the CPT-induced percent change in the LA of the epicardial coronary segment and the percent change of MBF response were significantly correlated ( $r = 0.87$ ;  $P = 0.0001$ ), suggesting that the CPT-induced change of the epicardial LA was associated with a corresponding change in MBF.

#### DISCUSSION

To our knowledge, this study is first to demonstrate a significant correlation between CPT-induced changes of the epicardial LA and MBF in patients with normal coronary angiograms, indicating that flow-dependent changes of epicardial LA indeed correlate with flow-dependent changes in the coronary resistance vessels. These observations are in keeping with previous studies (6,7,12) but extend these findings to a correlation between changes of the epicardial LA and of MBFs in response to sympathetic activation.



**FIGURE 7.** Percent change of epicardial LA and MBF to CPT of the study population.

Thus, the results of the study provide evidence that myocardial flow responses to sympathetic activation as assessed noninvasively by PET may serve as a useful tool for probing predominantly endothelium-dependent coronary vasomotion.

Heart rate and blood pressure at baseline and during CPT were similar at the time of the 2 study sessions, suggesting comparable hemodynamic conditions during QCA and during the PET measurements. Comparable mean values of MBF both at baseline and during CPT on repeated PET studies, as reported previously (12,18,19), suggest the reproducibility of the PET measurements and MBF responses to CPT. The present investigation demonstrates that in the absence of angiographic evidence of CAD, the paradoxical vasoconstrictor response of epicardial coronary arteries is associated with an impaired vasodilator function of the coronary arteriolar vessels in response to sympathetic stimulation. The functional impairment was noted in patients with coronary risk factors, whereas control subjects without such risk factors revealed preserved endothelium-dependent coronary vasomotion of both coronary conductance and resistance vessels. However, it should be emphasized that participants in this study were grouped according to a normal or abnormal epicardial coronary vasomotor response to CPT. Thus, patients with coronary risk factors but a possibly preserved vasomotor response were not included in this study, thereby avoiding possibly confounding effects of variabilities of coronary vasomotion (1,19).

Of particular interest, as also described previously (7,8), there was a significant positive correlation between CPT-induced changes in the RPP and changes of epicardial LA as well as PET-measured MBF responses in control subjects. Patients with coronary risk factor states no longer revealed such correlation, indicating an uncoupling of the normal endothelium-dependent coronary vasomotion from the metabolic demand during sympathetic activation. Thus, despite angiographically normal coronary arteries, the diminished or even paradoxical endothelium-dependent myocardial flow response may result in a mismatch between an increase in demand and supply that has been related to myocardial ischemia during daily life (20) and during exercise (21,22). Consistent with previous reports (7,8), the observed association between increases in MBF and increases in the RPP and thus in cardiac work in our normal controls implicates about a 30%–40% increase in MBF as a normal response to CPT. While the flow response to cold was on average markedly attenuated in the patients at risk, individual flow responses to sympathetic stimulation considerably varied, suggesting that flow responses to sympathetic stimulation in some patients with coronary risk factors such as hypertension or hypercholesterolemia may remain fully preserved. Thus, additional still undefined mechanisms such as genetic and environmental factors may be needed for an abnormal endothelium-dependent vasomotor response (1,2). In this regard, it is of interest to note that approximately only 50% of the total attributable risk burden for CAD can be related

to conventional risk factor states (23,24), warranting identification of alternate determinants of risk with mechanistic rationale. Although genetic variations have been realized as an important determinant of both the development of coronary atherosclerosis and the subsequent cardiovascular events, there are still some controversies of the impact of gene polymorphisms on late cardiovascular outcome (24). The latter controversies may be explained at least in part by modification of a genetic effect by environmental factors. For example, the carriage of the eNOS Asp298 allele alone may be insufficient to account for enhanced susceptibility to vascular disease or dysfunction. Rather, it requires other risk factors such as smoking to increase the likelihood of impaired endothelial-dependent vasomotion (25). Therefore, interactions of environmental factors with the eNOS Glu298Asp polymorphism appear to be necessary to produce the disease phenotype resulting in abnormal, endothelial-dependent vascular function. More exciting, dietary intervention to increase n-3 fatty acid levels resulted in a positive effect of vascular function in healthy young subjects with the eNOS Glu298Asp polymorphism (25), suggesting that medical interventions tailored to enhance endogenous NO production and bioavailability may prove beneficial in individuals with eNOS polymorphisms that limit the generation of bioactive and atheroprotective NO.

Moreover, it should be kept in mind that coronary risk factors per se may not always be associated with abnormal coronary vasomotion (1,2,26). For example, recent studies suggest that hypertension alone is not a stimulus for increased production of reactive oxygen species (ROS) but that conditions in which elevated circulating or local concentrations of angiotensin II induce an increase in superoxide production via stimulation of the membrane-bound NADH oxidase may result in detrimental effects on the vascular endothelium independent of elevating blood pressures (26). Thus, it appears that hypertension not associated with increases in angiotensin II and not associated with the activation of NADH oxidases may be less prone to manifest in abnormal endothelial-dependent vasomotion (27).

The correlation between LA changes of the large-conduit vessels and changes in MBF in response to CPT as found for the entire study population argues in favor of a close functional association between flow-dependent regulatory mechanisms at the level of the epicardial conduit and of the coronary resistance vessels. Functional alterations associated with coronary risk factors are therefore likely to affect both the conduit and the resistance vessels. Because alterations in flow responses to CPT were not confined to the territory of the coronary artery analyzed by quantitative angiography but were distributed homogeneously throughout the entire myocardium, disturbances of endothelium-dependent vasomotion appear to homogeneously affect the entire coronary circulation. Further, because of the previously observed close correlation between LA changes of the epicardial conduit vessels and changes in coronary flow velocity, changes in shear stress are major contributors to flow-



mediated vasodilator responses (6,7). It is therefore conceivable that metabolically mediated increases in blood flow during sympathetic stimulation with CPT led, under normal conditions, to shear stress-mediated increases of the diameter of the conduit vessels (7). MBF responses to adenosine or dipyridamole are predominantly vascular smooth muscle dependent. However, shear-sensitive components of the endothelium are likely to participate and contribute through flow-dependent mechanisms so that the hyperemic MBF serves as a measure of the integrated coronary circulatory function (28). In contrast, MBF responses to CPT provide more selective information on the endothelium-dependent coronary vasomotor function (1,7,12,16,17). This has been shown previously through highly invasive investigations in which the responses to direct intracoronary acetylcholine stimulation of the coronary endothelium were found to correlate closely with responses of the coronary flow velocity and of the coronary vessel diameter to CPT (7,9).

The cause of abnormal endothelium-dependent coronary vasoregulation in patients with various coronary risk factor states in this study and observed in previous investigations has yet to be defined. Abnormal coronary vasoreactivity to sympathetic stimulation is certainly multifactorial in etiology but may include diminished production or release of NO, destruction of NO, and concomitant release of constricting factors (1,2). Traditional risk factors for CAD have been shown to be associated with increased amounts of ROS and through interaction with NO reduce the bioavailability of endothelium-derived NO and promote vascular injury (1,2). Increased oxidative stress also may induce an array of inflammatory genes involved in the pathogenesis of atherosclerosis (1,2). Thus, increased generation of vascular ROS from sources such as NAD(P)H oxidase, xanthine oxidase, and uncoupled NO synthase in patients with coronary risk factors is considered to be a major common pathway leading to abnormal endothelium-dependent coronary vasomotion.

During sympathetic stimulation with CPT, the  $\alpha$ -adrenergically mediated vasoconstriction of the vascular smooth muscle cell is, under normal conditions, offset by flow-mediated response and, possibly, by a direct adrenergically induced endothelium-dependent vasodilator response (29). However, the vasoconstrictor effect may remain largely unopposed in the presence of endothelial dysfunction or atherosclerosis (30). Thus, the cold-induced response of MBF represents the net effect of endothelium-related vasodilator effects and vasoconstrictor responses of epicardial and arteriolar vascular smooth muscle cells (29,30,31), supporting the notion that coronary vasomotor responses to sympathetic activation may accurately reflect the functional integrity of the vascular wall (1,9).

The clinical implications of this study are considerable. Endothelial dysfunction of both the conduit and the coronary resistance vessels has been shown to precede and accompany the development and progression of atheroscle-

rosis, implicating the endothelium as both the target and the mediator of the atherosclerotic process with substantial diagnostic and prognostic implications (3–5, 23,32,33). However, established coronary risk factors may not be the sole determinants of abnormal endothelium-dependent coronary vasomotion. As recent observations indicate, individuals with normal endothelial function and patients with various stages of endothelial dysfunction may not necessarily differ in their risk factor profiles (23,32,33). Consistent with this possibility is the recently reported dissociation between endothelial vasomotor responses to acetylcholine and coronary atherosclerosis by intravascular ultrasound (IVUS), further suggesting that findings on intracoronary ultrasound alone may be limited in value for predicting coronary events (32).

In this regard, the findings of the current study indicate that PET measurements of MBF combined with CPT correlate with well-established indices of coronary vasomotion on quantitative angiography and support the validity and value of MBF responses to sympathetic activation as a noninvasive measure of coronary circulatory function. Hence, this noninvasive assay approach could serve as a surrogate for predicting the development of coronary atherosclerosis in humans (4). In addition, it is of great interest to ascertain whether a preventive medical intervention may be successfully guided according to the findings of abnormal coronary circulatory function in response to sympathetic activation as assessed by PET imaging.

There are limitations worth consideration in interpreting our data. One important drawback was that we did not perform IVUS to assess the vascular wall structure for an accurate classification of patients with normal coronary angiograms (34). Hence, as reported previously (35), early signs of atherosclerosis not detected by coronary angiography may have been present in the actual study population. Furthermore, because changes of epicardial LA and MBF responses to CPT were determined on different study days, differences in the hemodynamic state could have influenced the results of epicardial and arteriolar vascular responses. However, as shown, there were no significant differences in hemodynamic parameters and in hemodynamic responses to CPT between the angiographic and PET studies, indicating that both measurements were performed under comparable study conditions.

## CONCLUSION

The observed close correlation between an angiographically established parameter of flow-dependent, and most likely endothelium-mediated, coronary vasomotion and PET-measured MBFs further supports the validity and value of MBF responses to sympathetic activation as a noninvasive index of coronary circulatory function. Thus, PET perfusion imaging with CPT appears to be a promising tool to probe noninvasively flow-dependent, and most likely endothelium-dependent, coronary vasomotion.

## ACKNOWLEDGMENTS

The authors are indebted to the nurses of the Cardiac Catheterization and PET-Cyclotron Unit of the Albert Ludwigs University, Freiburg, for their invaluable support. This work was supported in part by a grant from the government of Baden-Württemberg to the Center of Clinical Research II: Cardiovascular Diseases: Analysis and Integration of Form and Function of the Albert Ludwigs University, Freiburg (project THS- and EUN-A1/A2), and by grant HL 33177 from the National Heart, Lung and Blood Institute.

## REFERENCES

- Drexler H. Endothelial dysfunction: clinical implications. *Prog Cardiovasc Dis*. 1997;39:287–324.
- Celermajer DS. Endothelial dysfunction: Does it matter? Is it reversible? *J Am Coll Cardiol*. 1997;30:325–333.
- Schindler T, Hornig B, Buser PT, et al. Prognostic value of abnormal vasoreactivity of epicardial coronary arteries to sympathetic stimulation in patients with normal coronary angiograms. *Arterioscler Thromb Vasc Biol*. 2003;23:495–501.
- Schachinger V, Britten MB, Zeiher AM. Prognostic impact of coronary vasodilator dysfunction on adverse long-term outcome of coronary heart disease. *Circulation*. 2000;101:1899–1906.
- Halcox JP, Schenke WH, Zalos G, et al. Prognostic value of coronary vascular endothelial dysfunction. *Circulation*. 2002;106:653–658.
- Zeiher AM, Drexler H, Wollschläger H, Just H. Modulation of coronary vasomotor tone in humans: progressive endothelial dysfunction with different early stages of coronary atherosclerosis. *Circulation*. 1991;83:391–401.
- Zeiher A, Drexler H, Wollschläger H, Just H. Endothelial dysfunction of the coronary microvasculature is associated with impaired coronary blood flow regulation in patients with early atherosclerosis. *Circulation*. 1991;84:1984–1992.
- Nitenberg A, Ledoux S, Valensi P, Sachs R, Attali JR, Antony I. Impairment of coronary microvascular dilation in response to cold pressor-induced sympathetic stimulation in type 2 diabetic patients with abnormal stress thallium imaging. *Diabetes*. 2001;50:1180–1185.
- Zeiher AM, Drexler H, Wollschläger H, Saurbier B, Just H. Coronary vasomotion in response to sympathetic stimulation in humans: importance of the functional integrity of the endothelium. *J Am Coll Cardiol*. 1989;14:1181–1190.
- Nabel EG, Ganz P, Gordon JB, Alexander RW, Selwyn AP. Dilation of normal and constriction of atherosclerotic coronary arteries caused by the cold pressor test. *Circulation*. 1988;77:43–52.
- Dimmeler S, Fleming I, Fisslthaler B, Hermann C, Busse R, Zeiher AM. Activation of nitric oxide synthase in endothelial cells by Akt-dependent phosphorylation. *Nature*. 1999;399:601–605.
- Campisi R, Czernin J, Schoder H, Sayre JW, Schelbert HR. L-Arginine normalizes coronary vasomotion in long-term smokers. *Circulation*. 1999;99:491–497.
- Wollschläger H, Lee P, Zeiher AM, Solzbach U, Just H. Improvement of quantitative angiography by exact calculation of radiological magnification factor. *IEEE Comput Cardiol*. 1985;12:483–486.
- Nitzsche EU, Choi Y, Czernin J, Hoh CK, Huang SC, Schelbert HR. Noninvasive quantification of myocardial blood flow in humans: a direct comparison of the [<sup>13</sup>N]ammonia and the [<sup>15</sup>O]water techniques. *Circulation*. 1996;93:2000–2006.
- Nagamachi S, Czernin J, Kim AS, et al. Reproducibility of measurements of regional resting and hyperemic myocardial blood flow assessed with PET. *J Nucl Med*. 1996;37:1626–1631.
- Schindler TH, Magosaki N, Jeserich M, et al. Effect of ascorbic acid on endothelial dysfunction of epicardial coronary arteries in chronic smokers assessed by cold pressor testing. *Cardiology*. 2000;94:239–246.
- Zeiher AM, Drexler H, Saurbier B, Just H. Endothelium-mediated coronary blood flow modulation in humans: effects of age, atherosclerosis, hypercholesterolemia, and hypertension. *J Clin Invest*. 1993;92:652–662.
- Schindler TH, Nitzsche EU, Munzel T, et al. Coronary vasoregulation in patients with various risk factors in response to cold pressor testing: contrasting myocardial blood flow responses to short- and long-term vitamin C administration. *J Am Coll Cardiol*. 2003;42:814–822.
- Campisi R, Nathan L, Pampaloni MH, et al. Noninvasive assessment of coronary microcirculatory function in postmenopausal women and effects of short-term and long-term estrogen administration. *Circulation*. 2002;105:425–430.
- Lanza GA, Manzoli A, Pasceri V, et al. Ischemic-like ST-segment changes during Holter monitoring in patients with angina pectoris and normal coronary arteries but negative exercise testing. *Am J Cardiol*. 1997;79:1–6.
- Schindler TH, Nitzsche E, Magosaki N, et al. Regional myocardial perfusion defects during exercise, as assessed by three dimensional integration of morphology and function, in relation to abnormal endothelium dependent vasoreactivity of the coronary microcirculation. *Heart*. 2003;89:517–526.
- Zeiher AM, Krause T, Schachinger V, Minners J, Moser E. Impaired endothelium-dependent vasodilation of coronary resistance vessels is associated with exercise-induced myocardial ischemia. *Circulation*. 1995;91:2345–2352.
- Bonetti PO, Lerman LO, Lerman A. Endothelial dysfunction: a marker of atherosclerotic risk. *Arterioscler Thromb Vasc Biol*. 2003;23:168–175.
- Loscalzo J. Functional polymorphisms in a candidate gene for atherothrombosis: unraveling the complex fabric of a polygenic phenotype. *J Am Coll Cardiol*. 2003;41:946–948.
- Leeson CP, Hingorani AD, Mullen MJ, et al. Glu298Asp endothelial nitric oxide synthase gene polymorphism interacts with environmental and dietary factors to influence endothelial function. *Circ Res*. 2002;90:1153–1158.
- Rajagopalan S, Kurz S, Munzel T, et al. Angiotensin II-mediated hypertension in the rat increases vascular superoxide production via membrane NADH/NADPH oxidase activation: contribution to alterations of vasomotor tone. *J Clin Invest*. 1996;97:1916–1923.
- Laursen JB, Rajagopalan S, Galis Z, Tarpey M, Freeman BA, Harrison DG. Role of superoxide in angiotensin II-induced but not catecholamine-induced hypertension. *Circulation*. 1997;95:588–593.
- Buus NH, Bottcher M, Hermansen F, Sander M, Nielsen TT, Mulvany MJ. Influence of nitric oxide synthase and adrenergic inhibition on adenosine-induced myocardial hyperemia. *Circulation*. 2001;104:2305–2310.
- Heusch G, Baumgart D, Camici P, et al. Alpha-adrenergic coronary vasoconstriction and myocardial ischemia in humans. *Circulation*. 2000;101:689–694.
- Baumgart D, Naber C, Haude M, et al. G protein beta3 subunit 825T allele and enhanced coronary vasoconstriction on alpha(2)-adrenoceptor activation. *Circ Res*. 1999;85:965–969.
- Vogel RA. Endothelium-dependent vasoregulation of coronary artery diameter and blood flow. *Circulation*. 1993;88:325–327.
- Nishimura RA, Lerman A, Chesebro JH, et al. Epicardial vasomotor responses to acetylcholine are not predicted by coronary atherosclerosis as assessed by intracoronary ultrasound. *J Am Coll Cardiol*. 1995;26:41–49.
- Suwaidi JA, Hamasaki S, Higano ST, Nishimura RA, Holmes DR Jr, Lerman A. Long-term follow-up of patients with mild coronary artery disease and endothelial dysfunction. *Circulation*. 2000;101:948–954.
- Mintz GS, Nissen SE, Anderson WD, et al. American College of Cardiology Clinical Expert Consensus Document on Standards for Acquisition, Measurement and Reporting of Intravascular Ultrasound Studies (IVUS): a report of the American College of Cardiology Task Force on Clinical Expert Consensus Documents. *J Am Coll Cardiol*. 2001;37:1478–1492.
- Erbel R, Ge J, Bockisch A, et al. Value of intracoronary ultrasound and Doppler in the differentiation of angiographically normal coronary arteries: a prospective study in patients with angina pectoris. *Eur Heart J*. 1996;17:880–889.



The Journal of  
NUCLEAR MEDICINE

## **PET-Measured Responses of MBF to Cold Pressor Testing Correlate with Indices of Coronary Vasomotion on Quantitative Coronary Angiography**

Thomas H. Schindler, Egbert U. Nitzsche, Manfred Olschewski, Ingo Brink, Michael Mix, John Prior, Alvaro Facta, Masayuki Inubushi, Hanjoerg Just and Heinrich R. Schelbert

*J Nucl Med.* 2004;45:419-428.

---

This article and updated information are available at:  
<http://jnm.snmjournals.org/content/45/3/419>


---

Information about reproducing figures, tables, or other portions of this article can be found online at:  
<http://jnm.snmjournals.org/site/misc/permission.xhtml>

Information about subscriptions to JNM can be found at:  
<http://jnm.snmjournals.org/site/subscriptions/online.xhtml>

*The Journal of Nuclear Medicine* is published monthly.  
SNMMI | Society of Nuclear Medicine and Molecular Imaging  
1850 Samuel Morse Drive, Reston, VA 20190.  
(Print ISSN: 0161-5505, Online ISSN: 2159-662X)

© Copyright 2004 SNMMI; all rights reserved.

 SOCIETY OF  
NUCLEAR MEDICINE  
AND MOLECULAR IMAGING