

The Promising Role of ^{18}F -FDG PET in Detecting Infected Lower Limb Prosthesis Implants

Hongming Zhuang, Paulo S. Duarte, Michael Pourdehnad, Alex Maes, Frank Van Acker, Darryl Shnier, Jonathan P. Garino, Robert H. Fitzgerald, and Abass Alavi

Division of Nuclear Medicine and Department of Orthopaedic Surgery, Hospital of the University of Pennsylvania, Philadelphia, Pennsylvania; and Department of Nuclear Medicine, University of Leuven Hospital, Leuven, Belgium

The purpose of this study was to evaluate the feasibility of using ^{18}F -FDG and PET for the detection of infection associated with lower limb arthroplasty. **Methods:** Seventy-four prostheses in 62 patients in whom infection was suspected after artificial hip or knee placement were studied with this technique. Images were obtained 60 min after an intravenous injection of FDG. The images were interpreted as positive for infection if tracer uptake was increased at the bone–prosthesis interface. A final diagnosis was made by surgical exploration or clinical follow-up for 1 y. PET results were compared with the follow-up outcome in all patients. **Results:** The sensitivity, specificity, and accuracy of PET for detecting infection associated with knee prostheses were 90.9%, 72.0%, and 77.8%, respectively. The sensitivity, specificity, and accuracy of PET for detecting infection associated with hip prostheses were 90%, 89.3%, and 89.5%, respectively. Overall, the sensitivity was 90.5% and the specificity was 81.1% for detection of lower limb infections. **Conclusion:** FDG PET is a useful imaging modality for detecting infections associated with lower limb arthroplasty and is more accurate for detecting infections associated with hip prostheses than for detecting infections associated with knee prostheses.

Key Words: ^{18}F -FDG PET; infection; arthroplasty

J Nucl Med 2001; 42:44–48

In the past few years, lower limb arthroplasty has become common. The number of patients who are appropriate candidates for this type of surgery is increasing rapidly. The widespread use and dramatic success of prosthetic joint implant surgery has greatly improved the quality of life for many individuals with degenerative, arthritic, or injured joints. In a significant number of cases, however, the patients experience pain at the site of arthroplasty at some point after surgery. The pain can signal biomechanical failure, periprosthetic infection of the joint, or both. Approximately 10% of lower limb arthroplasties need surgical re-

vision because of the pain. Although infection occurs in 1%–4% of original lower limb arthroplasties (1,2), the infection rate can reach more than 30% after revision arthroplasty (2,3). One of the most difficult diagnostic dilemmas in this setting is to distinguish an aseptic from a septic process. Existing preoperative tests for the diagnosis of periprosthetic infection are disappointing because of the relatively high frequency of false-negative results. The cause of a painful prosthesis often remains unclear until after intraoperative culturing and histopathologic examination. In only 25% of patients are infected prostheses accurately diagnosed on the basis of clinical history and physical examination (4). In most patients, multiple tests are required to establish the diagnosis before revision surgery (4). These tests include routine radiography, joint aspiration followed by bacterial culturing, and conventional nuclear medicine studies such as bone scanning, gallium scanning, and indium-labeled white blood cell scanning.

^{18}F -FDG PET has been extensively used in oncology (5). In contrast, reports about the usefulness of FDG PET in detecting infections are still few (6). Because of elevated glycolytic activity, inflammatory cells such as neutrophils and activated macrophages also have increased FDG uptake at the site of inflammation and infection (7–9) and therefore allow visualization of these sites. In this preliminary study, we evaluated the feasibility of the FDG PET approach in 74 lower extremity prostheses with suspected infection. PET results were compared with the final clinical diagnosis, which was based on all available clinical and laboratory data, including all outcome information.

MATERIALS AND METHODS

Patient Population

Sixty-two patients (age range, 27–81 y) with painful lower limb prostheses were studied with FDG PET. All had undergone routine clinical and laboratory studies for the evaluation of painful prostheses, but no clear diagnosis had been established before PET scanning. Three patients underwent PET 3, 7, and 9 mo, respectively, after arthroplasty. For all other patients, the interval between arthroplasty and PET was 1–8 y. A total of 74 prostheses (36 knee prostheses and

Received May 8, 2000; revision accepted Jul. 6, 2000.

For correspondence or reprints contact: Abass Alavi, MD, Division of Nuclear Medicine, Hospital of the University of Pennsylvania, 110 Donner Bldg., 3400 Spruce St., Philadelphia, PA 19104.

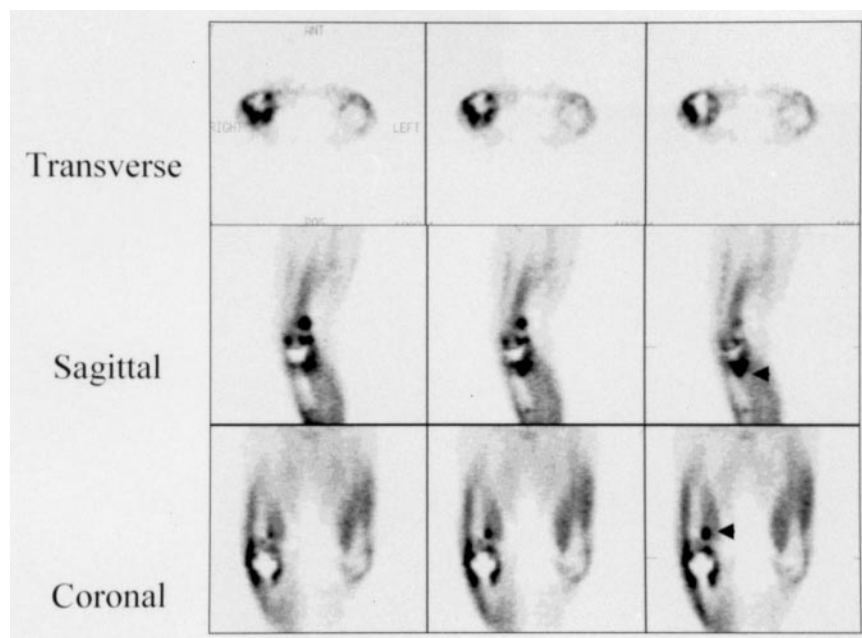


FIGURE 1. PET images of 60-y-old woman with painful right knee prosthesis proven infected by revision arthroplasty. Bone-prosthesis interface shows areas of intense uptake in both femoral and tibial component of prosthesis (arrow-heads).

38 hip prostheses) were examined with this technique. All patients gave written informed consent for the study.

FDG PET Study

PET scans were acquired using either a PENN PET 240H scanner (UGM ADAC Medical Systems, Inc., Philadelphia, PA) ($n = 53$) or an EACT HR+ PET camera (Siemens Medical Systems, Iselin, NJ) ($n = 21$). The patients fasted for at least 4 h before receiving the injection. The images were obtained 60 min after intravenous administration of 4.22–4.56 MBq FDG per kilogram body weight. The areas of interest were imaged with sequential scans of 4–5 min each. The imaging bed moved 6.4 cm axially to provide uniform sensitivity in the entire image set generated. The images were reconstructed using ordered-subset expectation maximization (10), and most images were not corrected for attenuation.

Image Interpretation

Two observers who were unaware of clinical and radiologic information read the studies jointly, and a consensus was reached on the basis of a discussion of each case. When an area of increased uptake was detected in the bone-prosthesis interface for either hip or knee arthroplasty compared with adjacent soft tissue, a diagnosis of infected prosthesis was suggested. If no such increased tracer uptake was noted, infection was considered unlikely. For a hip prosthesis, if the increased tracer uptake was limited to an area around the femoral head or neck portion of the prosthesis but did not extend to the femoral shaft, loosening was considered a likely diagnosis.

Follow-Up

The final diagnosis was made by surgical exploration (43 patients) or clinical follow-up (19 patients) for 1 y. Arthroplasties were considered infected if aspiration cultures grew organisms or if infection was verified at surgery. Arthroplasties were considered uninfected if an operative smear revealed no leukocytes and if intraoperative cultures obtained from suspected sites during surgery revealed no growth. Arthroplasties that did not require surgical exploration during the follow-up period were considered

uninfected. Most patients with painful prostheses responded to conservative anti-inflammatory (but not antibiotic) therapy during the follow-up period.

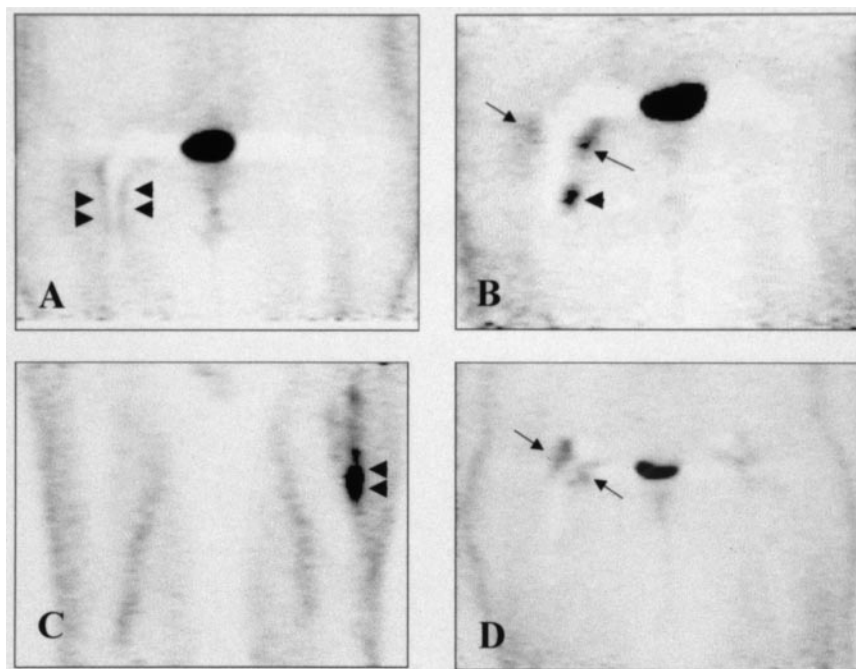
RESULTS

The FDG PET scan correctly revealed 10 of 11 knee prosthesis infections (Fig. 1). However, 7 positive results in 25 knees eventually proved not to be infections. For hip prostheses, the PET scan successfully revealed 9 of 10 hip infections associated with prostheses (Figs. 2A–C) and excluded infection in 25 of 28 without infection (Fig. 3). The sensitivity, specificity, and accuracy of PET for detecting infection associated with knee prostheses were 90.9%, 72.0%, and 77.8%, respectively. The sensitivity, specificity, and accuracy of PET for detecting infection associated with hip prostheses were 90.0%, 89.3%, and 89.5%, respectively. Overall, the sensitivity for the entire population studied was 90.5% and the specificity was 81.1% for detecting infections of lower limb arthroplasties.

DISCUSSION

FDG PET has been used extensively for the detection of malignancy. However, on the basis of a large body of data in the literature, FDG uptake is not specific for a malignant process and is the source of low specificity when used in such settings. FDG accumulation has been reported in a variety of infectious or inflammatory sites, including abdominal infection (11), brain abscesses (12), inflammatory pancreatic disease (13), lobar pneumonia (14), sarcoidosis (15), osteomyelitis (16,17), tuberculosis (18), colitis (19), asthma (20), sinusitis (21), myositis (22), mastitis (23), and thyroiditis (24). On the other hand, in a proper setting, increased FDG accumulation may suggest the presence of

FIGURE 2. (A) Coronal image of 72-y-old woman with hip prosthesis. Periprosthetic infection on right side was identified (arrowheads). (B) Coronal image of 76-y-old woman with bilateral hip prostheses. Both infection (arrowhead) and loosening (arrows) were shown. (C) Coronal image of 78-y-old man with painful left hip prosthesis. Arrowheads indicate periprosthetic infection and osteomyelitis. (D) Coronal image of 76-y-old woman with bilateral hip prostheses. FDG uptake is noted only around neck of prosthesis (arrows). FDG PET diagnosis of loosening was confirmed after revision arthroplasty.



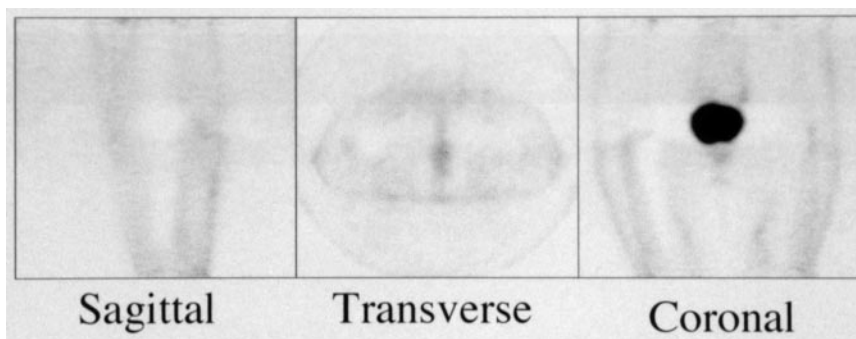
infection or inflammation. This study clearly shows the feasibility of using FDG PET for discriminating infection as a complication of prosthesis from noninfectious processes in patients who have undergone lower limb arthroplasty.

Differentiation of an infected from a uninfected prosthesis (such as loosening) is essential for optimal and cost-effective management of these patients. Accurate confirmation or exclusion of infection before revision surgery can substantially simplify plans in these circumstances. In addition, the outcome can be significantly influenced by an accurate initial diagnosis. Current tests do not provide a sensitivity or specificity adequate for accomplishing these goals (25). Plain radiography has a limited role for the diagnosis of infection associated with prostheses because findings are common to both septic and aseptic failure. Also, infection and loosening commonly show no finding. Therefore, aspiration biopsy of the hip or knee of the patient is perhaps the most useful investigative tool for preoperative confirmation of infection, with sensitivity and specificity ranging from 50% to 93% and from 82% to 97%, respectively (25–27). However, the sensitivity of even preop-

erative joint aspiration is not high enough to exclude infection with an acceptable certainty (28). Moreover, the administration of antibiotics before aspiration biopsy can further reduce the sensitivity of this approach (26,27).

Radionuclide imaging has been extensively used for the diagnosis of infection after joint replacement. However, conventional nuclear medicine modalities, in addition to having limited sensitivity and specificity, suffer from two other shortcomings: the time required to complete the procedures and the cost of the examinations. Bone and gallium scans were first used in patients with a painful lower limb prosthesis in the 1970s (29). The sensitivity of combined bone and gallium scans is relatively poor (38%) (30). In only about one fourth to one third of patients with proven prostheses infections was the infection detected with these modalities (31,32). According to most reports, ^{111}In -labeled white blood cell scanning, when combined with $^{99\text{m}}\text{Tc}$ -sulfur colloid bone marrow imaging (33), may provide superior sensitivity and specificity for detecting infection in this setting compared with other conventional nuclear med-

FIGURE 3. A 76-year-old woman with right hip prosthesis who presented with right hip pain. No focally increased FDG accumulation is seen around any portion of prosthesis on PET scan. Therefore, both infection and loosening were ruled out. Patient responded to conservative therapy during 16 mo of follow-up.



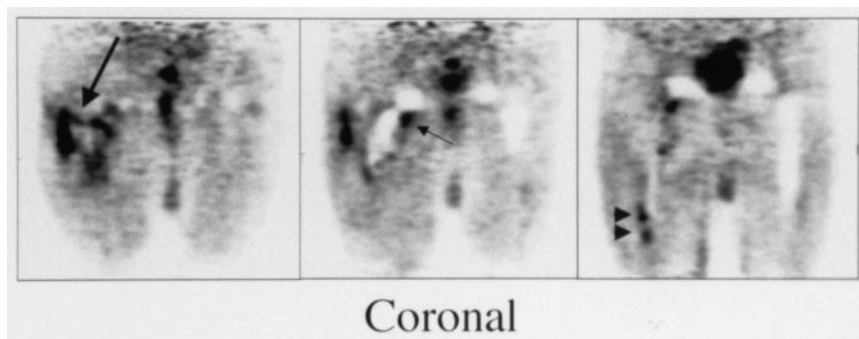


FIGURE 4. Coronal images of 63-y-old man with painful right hip prosthesis. Loosening (short arrow), infection (arrowheads), and fistula (long arrow) are shown.

icine modalities. The sensitivity, specificity, and accuracy of this dual-tracer modality have been reported to be 86%–100%, 89%–94%, and 89%–96%, respectively (34–36).

A major concern about indium-labeled leukocyte imaging is the separating, labeling, and reinjection of the white blood cells, which offer several significant opportunities for iatrogenic errors (37) and significantly affect the function and viability of the final product. ^{111}In - and $^{99\text{m}}\text{Tc}$ -labeled antibodies are emerging as a new approach to detect prosthesis infections without the necessity of labeling the cells outside the body and have had some success (38,39). However, other disadvantages of indium-labeled leukocyte imaging, such as the necessity for delayed imaging (24 h or longer), relatively high radiation exposure, and additional bone marrow imaging, remain major shortcomings.

To our knowledge, no major reports have appeared in the literature about the usefulness of FDG PET in the setting of chronic infection of orthopedic implants. FDG PET is often misperceived as an expensive, complicated imaging modality and, as such, requiring limited use. However, compared with traditional nuclear medicine methods, FDG PET may prove to be a single and cost-effective modality for accurately diagnosing infection associated with lower limb arthroplasty, especially in the hips. Based on routine practice in most institutions, the expense of FDG PET is substantially lower than the combined costs of ^{111}In -labeled white blood cell scanning, bone marrow studies, and bone imaging, which are performed as a combination in most patients. In addition, tomographic images with FDG PET provide better spatial resolution than do conventional nuclear medicine modalities, significantly improving the performance of the test. Therefore, PET can better detect small and subtle changes in disease activity, which may be missed by other techniques. Figure 4 shows the value of this modality in providing information about a complex process. In the patient illustrated, who had clear clinical evidence of infection, FDG PET revealed the presence of infection in the bone–prosthesis interface, fistulous drainage of pus in the area, and a suggestion of loosening with superimposed infection around the neck. The details shown were unique and exemplified the unusual capability of this modality. Furthermore, FDG PET can be completed within a few hours, compared with 2 d for other nuclear medicine meth-

ods. Considering that the average cost of treating an arthroplasty patient with infection ranges from \$50,000 to \$60,000 (40) and that the success of treating infection associated with a prosthesis largely depends on early, accurate diagnosis, FDG PET may prove useful and cost-effective for optimal patient management of painful lower limb prostheses.

Interestingly, the intensity of uptake at the bone–prosthesis interface was not important when making the diagnosis, and only the presence of uptake was an indication of infection. Therefore, increased tracer uptake at the bone–prosthesis interface should be considered suggestive of infection. In the hip, increased tracer uptake around the femoral head portion of the prosthesis was a reliable sign of loosening. If the accumulated FDG was limited around the femoral head or neck and did not extend to the bone–prosthesis interface, the probability of infection was low (Fig. 2D; compare with Figs. 2A and B). The simplicity of the diagnostic criteria proposed should reduce potential interobserver variation and increase the accuracy of the scan.

As a result of the high sensitivity of FDG PET, only two false-negative results were reported in this study. In contrast, 10 false-positive results, mostly among patients with knee prostheses, were reported. Incorrect interpretation of postsurgical changes as positive findings in FDG PET is well known. However, the interval between surgery and FDG PET was more than 1 y in all patients with false-positive results in this study. Therefore, in addition to postsurgical changes, other factors must have contributed to inaccurate results. Further research is required to clearly define the factors that contribute to false-positive results, especially in knee prostheses.

Our data clearly show that the performance of this technique is optimal for diagnosing and excluding the presence of infection in hip and knee prostheses. We have shown that using appropriate criteria for uptake of FDG in uninfected, infected, and loose prostheses achieves high accuracy, particularly for FDG PET of complicated hip prostheses. For reasons unknown, the FDG PET results for knee prostheses are somewhat inferior to those for hip prostheses. The major advantage of FDG PET over conventional nuclear medicine procedures is the simplicity of the approach and the timely availability of results (within 2–3 h).

CONCLUSION

These preliminary data show that the use of FDG PET for detecting infection associated with lower limb prosthesis is feasible but has some limitations. FDG PET is more useful for detecting infections in painful hip prostheses than in painful knee prosthesis.

ACKNOWLEDGMENTS

This study was supported in part by a Department of Energy grant and by training grant CA-65442-04 from the National Institutes of Health, Bethesda, MD.

REFERENCES

- Andrews HJ, Arden GP, Hart GM, Owen JW. Deep infection after total hip replacement. *J Bone Joint Surg Br.* 1981;63B:53-57.
- Maderazo EG, Judson S, Pasternak H. Late infections of total joint prostheses: a review and recommendation for prevention. *Clin Orthop.* 1988;229:131-142.
- Hunter GA, Welsh RP, Cameron HU, Bailey WH. The results of revision of total hip arthroplasty. *J Bone Joint Surg Br.* 1979;61B:419-421.
- Fitzgerald RHJ. Diagnosis and management of the infected hip prosthesis. *Orthopedics.* 1995;18:833-835.
- Rigo P, Paulus P, Kaschten BJ, et al. Oncological applications of positron emission tomography with fluorine-18 fluorodeoxyglucose. *Eur J Nucl Med.* 1996;23:1641-1674.
- Sugawara Y, Braun D, Kison P, Russo J, Zasadny K, Wahl R. Rapid detection of human infections with fluorine-18 fluorodeoxyglucose and positron emission tomography: preliminary results. *Eur J Nucl Med.* 1998;25:1238-1243.
- Kubota R, Yamada S, Kubota K, Tamahashi N, Ido T. Intratumoral distribution of fluorine-18-fluorodeoxyglucose in vivo: high accumulation in macrophages and granulation tissues studied by microautoradiography. *J Nucl Med.* 1992;33:1972-1980.
- Yamada S, Kubota K, Kubota R, Ido T, Tamahashi N. High accumulation of fluorine-18-fluorodeoxyglucose in turpentine-induced inflammatory tissue. *J Nucl Med.* 1995;36:1301-1306.
- Cook GJ, Fogelman I, Maisey MN. Normal physiological and benign pathological variants of 18-fluoro-2-deoxyglucose positron-emission tomography scanning: potential for error in interpretation. *Semin Nucl Med.* 1996;26:308-314.
- Bedigian MP, Benard F, Smith RJ, Karp JS, Alavi A. Whole-body positron emission tomography for oncology imaging using singles transmission scanning with segmentation and ordered subsets-expectation maximization (OS-EM) reconstruction. *Eur J Nucl Med.* 1998;25:659-661.
- Tahara T, Ichiya Y, Kuwabara Y, et al. High [18F]-fluorodeoxyglucose uptake in abdominal abscesses: a PET study. *J Comput Assist Tomogr.* 1989;5:829-831.
- Meyer MA, Frey KA, Schwaiger M. Discordance between F-18 fluorodeoxyglucose uptake and contrast enhancement in a brain abscess. *Clin Nucl Med.* 1993;18:682-684.
- Shreve PD. Focal fluorine-18 fluorodeoxyglucose accumulation in inflammatory pancreatic disease. *Eur J Nucl Med.* 1998;25:259-264.
- Kapucu LO, Meltzer CC, Townsend DW, Keenan RJ, Luketich JD. Fluorine-18-fluorodeoxyglucose uptake in pneumonia. *J Nucl Med.* 1998;39:1267-1269.
- Brudin LH, Valind SO, Rhodes CG, et al. Fluorine-18 deoxyglucose uptake in sarcoidosis measured with positron emission tomography. *Eur J Nucl Med.* 1994;21:297-305.
- Guhlmann A, Brecht-Krauss D, Suger G, et al. Fluorine-18-FDG PET and technetium-99m antigranulocyte antibody scintigraphy in chronic osteomyelitis. *J Nucl Med.* 1998;39:2145-2152.
- Zhuang H, Duarte PS, Pourdehnad M, Shnier D, Alavi A. Exclusion of chronic osteomyelitis with F-18 fluorodeoxyglucose positron tomographic imaging. *Clin Nucl Med.* 2000;25:281-284.
- Patz EF Jr, Lowe VJ, Hoffman JM, et al. Focal pulmonary abnormalities: evaluation with F-18 fluorodeoxyglucose PET scanning. *Radiology.* 1993;188:487-490.
- Hannah A, Scott AM, Akhurst T, Berlangieri S, Bishop J, McKay WJ. Abnormal colonic accumulation of fluorine-18-FDG in pseudomembranous colitis. *J Nucl Med.* 1996;37:1683-1685.
- Taylor IK, Hill AA, Hayes M, et al. Imaging allergen-invoked airway inflammation in atopic asthma with [18F]-fluorodeoxyglucose and positron emission tomography. *Lancet.* 1996;347:937-940.
- Yasuda S, Shohtsu A, Ide M, Takagi S, Kijima H, Horiuchi M. Elevated F-18 FDG uptake in plasmacyte-rich chronic maxillary sinusitis. *Clin Nucl Med.* 1998;23:176-178.
- Gysen M, Stroobants S, Mortelmans L. Proliferative myositis: a case of a pseudomalignant process. *Clin Nucl Med.* 1998;23:836-838.
- Bakheet SMB, Powe J, Kandil A, Ezzat A, Rostom A, Amartei J. F-18 FDG uptake in breast infection and inflammation. *Clin Nucl Med.* 2000;25:100-103.
- Yasuda S, Shohtsu A, Ide M, Takagi S, Suzuki Y, Tajima T. Diffuse F-18 FDG uptake in chronic thyroiditis. *Clin Nucl Med.* 1997;22:341.
- Levitsky KA, Hozack WJ, Balderston RA, et al. Evaluation of the painful prosthetic joint: relative value of bone scan, sedimentation rate, and joint aspiration. *J Arthroplasty.* 1991;6:237-244.
- Spanghel MJ, Younger ASE, Masri BA, Duncan CP. Diagnosis of infection following total hip arthroplasty. *J Bone Joint Surg Am.* 1997;79A:1587-1588.
- Barrack RL, Jennings RW, Wolfe MW, Bertot AJ. The value of preoperative aspiration before total knee revision. *Clin Orthop.* 1997;345:8-16.
- Fehring TK, Cohen B. Aspiration as a guide to sepsis in revision total hip arthroplasty. *J Arthroplasty.* 1996;11:543-547.
- Bauer GCH, Lindberg L, Naverstein Y, Sjostrand LO. Radionuclide scintimetry in infected total hip arthroplasty. *Acta Orthop Scand.* 1973;44:439-450.
- Kraemer WJ, Saplys R, Waddell JP, Morton J. Bone scan, gallium scan, and hip aspiration in the diagnosis of infected total hip arthroplasty. *J Arthroplasty.* 1993;8:611-616.
- Schauwecker DS, Park HM, Mock BH, et al. Evaluation of complicating osteomyelitis with Tc-99m MDP, In-111 granulocytes, and Ga-67 citrate. *J Nucl Med.* 1984;25:849-853.
- Tumeh SS, Aliabadi P, Weissman BN, McNeil JB. Chronic osteomyelitis: bone and gallium scan patterns associated with active disease. *Radiology.* 1986;158:685-688.
- King AD, Peters AM, Stuttle AW, Lavender JP. Imaging of bone infection with labelled white blood cells: role of contemporaneous bone marrow imaging. *Eur J Nucl Med.* 1990;17:148-151.
- Mulamba LAH, Ferrant A, Lencers N, deNaye P, Rombouts JJ, Vincent A. Indium-111-leukocyte scanning in the evaluation of painful hip arthroplasty. *Acta Orthop Scand.* 1983;54:695-697.
- Palestro CJ, Roumanas P, Swyer AJ, Kim CK, Goldsmith SJ. Diagnosis of musculoskeletal infection using combined In-111 labeled leukocyte and Tc-99m SC marrow imaging. *Clin Nucl Med.* 1992;17:269-273.
- Achong DM, Oates E. The computer-generated bone marrow subtraction image: a valuable adjunct to combined In-111 WBC/Tc-99m in sulfur colloid scintigraphy for musculoskeletal infection. *Clin Nucl Med.* 1994;19:188-193.
- Alazraki NP. Diagnosing prosthetic joint infection. *J Nucl Med.* 1990;31:1955-1957.
- Boubaker A, Delaloye AB, Blanc CH, Dutoit M, Leyvraz PF, Delaloye B. Immunoscintigraphy with antigranulocyte monoclonal antibodies for the diagnosis of septic loosening of hip prosthesis. *Eur J Nucl Med.* 1995;22:139-147.
- Nijhof MW, Oyen WJ, van Kampen A, Claessens RA, van der Meer JW, Corstens FH. Hip and knee arthroplasty infection: In-111 IgG scintigraphy in 102 cases. *Acta Orthop Scand.* 1997;68:332-336.
- Sculco TP. The economic impact of infected arthroplasty. *Orthopedics.* 1995;18:871-893.



The Journal of
NUCLEAR MEDICINE

The Promising Role of ^{18}F -FDG PET in Detecting Infected Lower Limb Prosthesis Implants

Hongming Zhuang, Paulo S. Duarte, Michael Pourdehnad, Alex Maes, Frank Van Acker, Darryl Shnier, Jonathan P. Garino, Robert H. Fitzgerald and Abass Alavi

J Nucl Med. 2001;42:44-48.

This article and updated information are available at:
<http://jnm.snmjournals.org/content/42/1/44>

Information about reproducing figures, tables, or other portions of this article can be found online at:
<http://jnm.snmjournals.org/site/misc/permission.xhtml>

Information about subscriptions to JNM can be found at:
<http://jnm.snmjournals.org/site/subscriptions/online.xhtml>

The Journal of Nuclear Medicine is published monthly.
SNMMI | Society of Nuclear Medicine and Molecular Imaging
1850 Samuel Morse Drive, Reston, VA 20190.
(Print ISSN: 0161-5505, Online ISSN: 2159-662X)

© Copyright 2001 SNMMI; all rights reserved.