

## Recombinant Human Laforin Expressed in Insect Cells: Expression, Purification, and Biochemical Characterizations

Ji-Woong Choi,<sup>†,||</sup> Seung Min Bong<sup>†</sup>, Seung Won Yang<sup>†</sup>, Hyonchol Jang<sup>†</sup>, SangYoun Park<sup>§</sup>,  
Seung Jun Kim<sup>#</sup>, and Byung Il Lee<sup>†,\*</sup>

<sup>†</sup>Biomolecular Function Research Branch, Division of Convergence Technology, National Cancer Center, Goyang, Gyeonggi 410-769, Korea. \*E-mail: bilee@ncc.re.kr

<sup>‡</sup>Division of Cancer Biology, Research Institute, National Cancer Center, Goyang, Gyeonggi 410-769, Korea

<sup>§</sup>School of Systems Biomedical Science, Soongsil University, Seoul 156-743, Korea

<sup>#</sup>Medical Proteomics Research Center, Korea Research Institute of Bioscience and Biotechnology, Daejeon 305-333, Korea  
(Received June 10, 2015; Accepted July 20, 2015)

**Key words:** Laforin, EPM2A, Baculovirus, Insect cells, Phosphatase, Glycogen, Lafora disease

Lafora disease (LD; OMIM 254780) is an autosomal recessive neurodegenerative disorder, which leads to dementia, epilepsy, myoclonus, and consequentially to death.<sup>1</sup> The feature of LD is the accumulation of Lafora bodies which are hyperphosphorylated glycogen-like tangles in the cytoplasm.<sup>2</sup> Together with mutations in the NHLRC1 (EPM2B) gene, mutations in the Laforin gene are directly related to a severe autosomal recessive LD (EPM2). Many Laforin mutations have been found in Lafora disease patients.<sup>1b</sup> Laforin is a member of dual specificity phosphatases (DSP) which directly remove the phosphate group from glycogen.<sup>3</sup> The DSP domain of Laforin has phosphatase activities against both phosphorylated protein and glucan.<sup>3</sup> Laforin is encoded by the EPM2A (epilepsy of progressive myoclonus type 2A) gene where mutations are found in about half of LD patients.<sup>4</sup>

The Laforin protein is comprised of an N-terminal carbohydrate-binding module (CBM) and a C-terminal DSP domain.<sup>5</sup> CBM of Laforin is classified into CBM20 family by evolutionary relationship, polypeptide fold, and affinity to carbohydrates and glyco-conjugates in the Carbohydrate-Active Enzyme (CAZy) database.<sup>6</sup> CBM of Laforin has been reported to bind to glycogen, lafora body, and even plant amylopectin.<sup>5,7</sup> Human Laforin is a unique phosphatase in human which contains a CBM whose usual substrates are carbohydrates such as glycogen.<sup>8</sup>

Laforin also has DSP domain at the C-terminus. This DSP domain belongs to a member of protein tyrosine phosphatase family of cysteine-dependent phosphatases.<sup>9</sup> The general substrates of Laforin are C2 and C3 phosphomono-

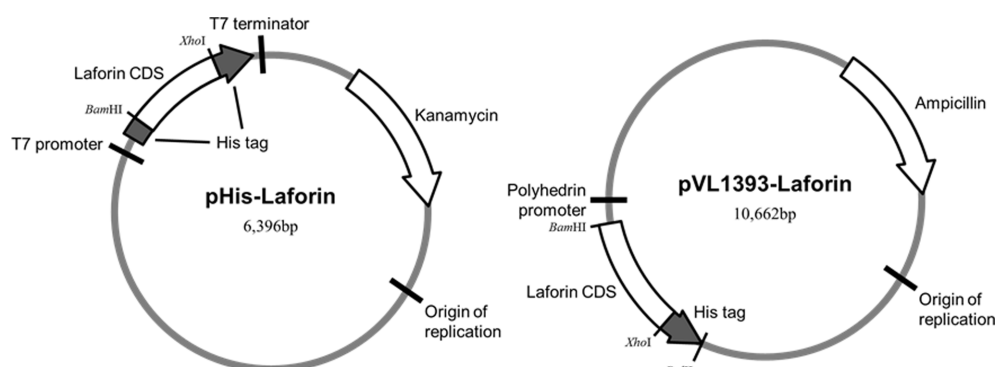
esters of oligosaccharides,<sup>10</sup> however, recombinant Laforin purified from *E. coli* elicits phosphatase activities against artificial substrates such as *para*-nitrophenylphosphate (pNPP) and 3-*O*-methylfluorescein phosphate (OMFP) as observed in other DSP domain phosphatases.<sup>11</sup>

Herein, the application of baculovirus/insect cell expression system in the production of wild-type and phosphatase active site mutant was investigated where Laforin proteins were expressed in insect cells using baculovirus and compared with that from the *E. coli* expression system. The phosphatase activities of purified recombinant Laforin against various substrates such as pNPP, OMFP, and glycogen were examined.

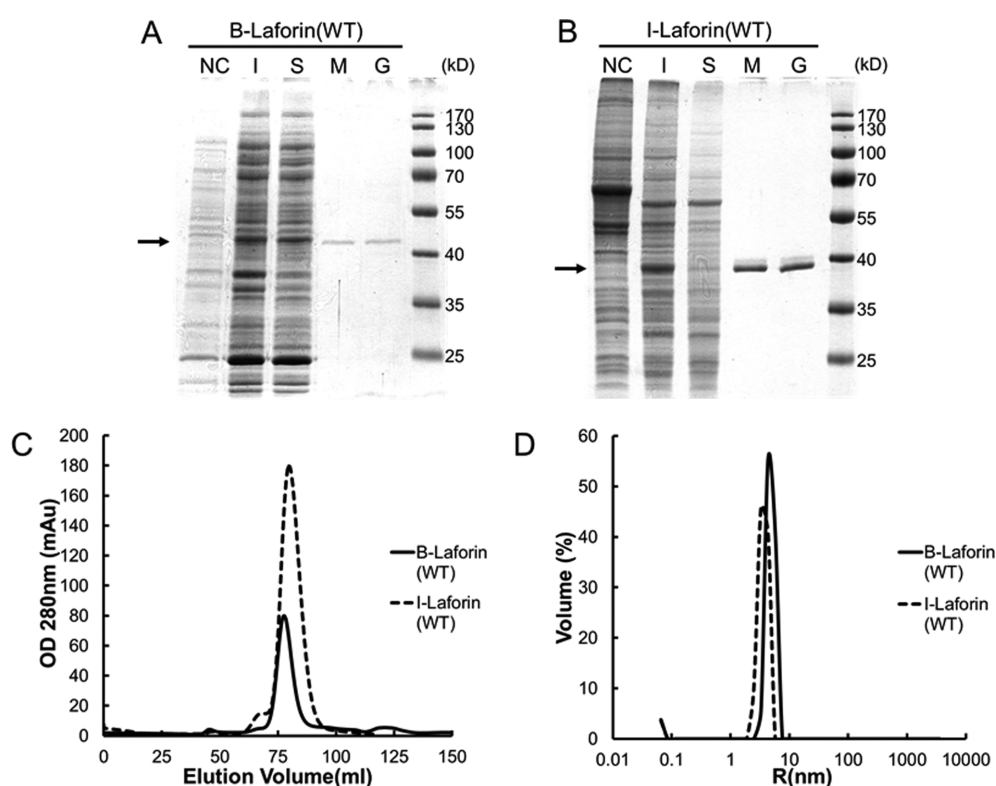
In this study, the Laforin coding DNA sequence was cloned into bacterial expression vector and expressed in *E. coli*. Using this construct, the polyhistidine-tagged Laforin was also cloned into baculoviral transfer vector pVL1393 (Fig. 1). Both plasmids have the polyhistidine tags for purification using a Ni-NTA resin. However, purification of polyhistidine-tagged Laforin was not successful using a Ni-NTA resin as previously reported by Dukhande *et al.*<sup>12</sup>

Overexpressed recombinant Laforins in *E. coli* (B-Laforin) and in insect cells (I-Laforin) were successfully purified by affinity chromatography with an amylose resin (Fig. 2), which utilizes Laforin itself with a carbohydrate-binding module (CBM). While the purified recombinant Laforin using the Ni-NTA resin was prone to aggregation, purified recombinant Laforin especially the one expressed in the insect cells was relatively stable. Laforin was eluted off at 500 mM maltose containing buffer (Fig. 2A and 2B). Considering that the maltose binding protein (MBP)-tagged proteins usually elutes at 10 mM maltose containing buffers, interac-

<sup>||</sup>Current address: Wide River Institute of Immunology, Seoul National University, Hongcheon, Gangwon 250-812, Republic of Korea.



**Figure 1.** Construction of human Laforin cDNA cloned into the expression vector pHis and pVL1393. pHis vector is modified from pET32 (Novagen).



**Figure 2.** Purification and characterization of B-Laforin and I-Laforin. SDS-PAGE stained with Coomassie Blue of fractions from (A) *E. coli* strain Rosetta 2 (DE3) and (B) Sf9 cells (NC, negative control (uninduced *E. coli* or uninfected Sf9 cells); I, IPTG-induced *E. coli* or Baculovirus-infected Sf9 cells; S, soluble fraction; M, Amylose resin elution; G, fraction from Superdex<sup>TM</sup> 200 pg column) (C) The chromatogram of B-Laforin and I-Laforin in Superdex<sup>TM</sup> 200 column. (D) DLS analysis of B-Laforin and I-Laforin in buffer containing 100 mM Tris-HCl pH 8.5.

tions between the CBM of Laforin and the amylose resin seem to be very strong. Moreover, the addition of maltose improved the protein stability of purified Laforin as previously reported.<sup>13</sup> Size exclusion chromatography results showed a single chromatogram peak (Fig. 2C), and the eluted Laforin associated into a dimer as concluded from a dynamic light scattering experiment (Fig. 2D). The native

molecular weight of I-Laforin as estimated by dynamic light-scattering analysis was ~64 kDa with 12.7% polydispersity. That of B-Laforin was ~86 kDa with 12.6% polydispersity. Therefore, the results indicated that human Laforin expressed in insect cells exists as dimers in solution (the calculated monomer weight including the fusion tag is 38,497 Da for I-Laforin and 41,087 Da for B-Laforin, respectively).

**Table 1.** Purification yields of human Laforin (mg of purified Laforin/L of cell culture)

	Wild type	C266S mutant
<i>E. coli</i> Rosetta 2 (DE3)	0.71 mg/L culture	2.10 mg/L culture
<i>S. frugiperda</i> (Sf9)	4.07 mg/L culture	7.04 mg/L culture

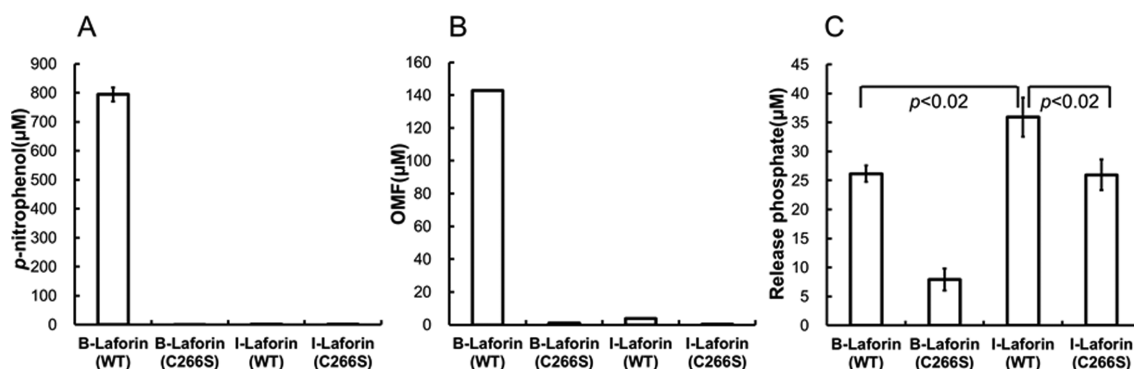
Generally, recombinant proteins using the *E. coli* expression system gives higher purification yield compared to using the insect cell expression system. However, baculovirus/insect cell expression system for the recombinant human Laforin showed higher expression level and purification yield than the *E. coli* expression system. The purification yields of baculovirus expressed wild type and C266S mutant Laforins respectively were 5.7 and 3.4 fold higher than that of from the *E. coli* expression system (Table 1).

We performed *in vitro* phosphatase assays using the purified Laforins. Because recombinant Laforin purified from *E. coli* is well known to dephosphorylate pNPP and OMFP, we analyzed and compared the phosphatase activities of B-Laforin and I-Laforin. Unexpectedly, the phosphatase activity of B-Laforin (WT) was ~450 times higher than that of I-Laforin (WT) when pNPP was used as substrate. Likewise, OMFP phosphatase activity of B-Laforin (WT) was ~37 times higher than that of I-Laforin (WT). Because Laforin directly dephosphorylates glucans in glycogen metabolism, we next investigated the phosphatase activity of B-Laforin and I-Laforin against glycogen. A branched polymer of glucose, glycogen, contains a small amount of covalently linked phosphate for determining its branching structure.<sup>3</sup> The released phosphates from glycogen were monitored using the malachite green reagent for the measurement of phosphatase activity. Contrary to the above assay results, the I-Laforin dephosphorylated glycogen more efficiently than the B-Laforin (Fig. 3C). Taken together,

I-Laforin possessed selective phosphatase activity to glycogen compared with B-Laforin.

In this study, we expressed recombinant Laforin in both insect cells and bacteria, and compared their catalytic activity. The purified B-Laforin and I-Laforin exhibited different biochemical properties. While the phosphatase activity against the general substrates such as pNPP and OMFP was higher for the B-Laforin, the I-Laforin had higher activity against glycogen which is one of Laforin's real substrate. This effect is probably due to the higher substrate selectivity in I-Laforin. In general, insect cell expression has advantages in protein folding and post-translational modification.<sup>14</sup> The difference in protein folding during protein expression may be one of the reasons behind different biochemical properties in I- and B-Laforin. Even though we failed to detect any phosphorylation in I-Laforin, post-translational modification can be another cause of different biochemical properties in the two recombinant Laforins. Of note, Ser25 of Laforin is known to be phosphorylated by AMP-activated protein kinase (AMPK) and the critical role for modulating Laforin phosphatase activity and interaction with binding partners of Laforin.<sup>15</sup>

Since Laforin genes of Lafora disease patients have many mutations,<sup>1b</sup> structural and biochemical studies on the various Laforin mutations from the Lafora disease would be helpful for understanding the molecular basis of the disease. Very recently, crystal structure of nearly full-length Laforin was determined and it provided the functional mechanism of Laforin and the structural basis of disease.<sup>16</sup> Although crystal structure of Laforin was determined using the *E. coli* expressed recombinant Laforin, I-Laforin can be more preferable over B-Laforin for future biochemical studies because I-Laforin exhibited enhanced substrate specificity in our studies.



**Figure 3.** Analysis of phosphatase activities of B-Laforin and I-Laforin. Phosphatase activities of B-Laforin and I-Laforin were measured against the substrates of pNPP (A), OMFP (B), and glycogen (C). Error-bars indicate means  $\pm$  standard deviations from at least three independent experiments.

## EXPERIMENTAL METHODS

### Cloning and Mutagenesis

The gene covering the full regions of human Laforin were amplified by polymerase chain reaction (PCR) and cloned into pHis (modified from Novagen's pET32) vector using the BamHI/XhoI restriction enzyme sites. The resulting recombinant Laforin contains polyhistidine tags at its N- and C-terminus (MHHHHHGSGLVPRSENLYFQGS for N-terminus and LEHHHHHHHH for C-terminus). The phosphatase active site mutant (C266S) was obtained by applying the QuikChange<sup>TM</sup> method. For the generation of baculovirus, wild type and mutant genes covering the Laforin and the C-terminal fused polyhistidine tag were amplified by PCR and cloned into pVL1393 baculovirus transfer vector (AB Vector) using BamHI/BglII restriction enzyme sites (Fig. 1).

### Expression of Human Laforin in *E. coli*

The recombinant proteins were overexpressed in *E. coli* strain Rosetta 2(DE3) (Novagen). Transformed cells with the pHis-Laforin plasmid were grown in Terrific Broth to an OD<sub>600</sub> of 0.5 at 37 °C and protein expression was induced by 0.1 mM isopropyl-D-thiogalactopyranoside at 18 °C. Cells were further cultured at 18 °C for 48 h after protein induction, and were harvested by centrifugation at 10,000×g for 10 min.

### Preparation of Recombinant Baculovirus and Expression of Human Laforin in Sf9 Cells

*Spodoptera frugiperda* (Sf9) cells were grown at 27 °C in Sf-900<sup>TM</sup> II SFM medium (Life Technologies) supplemented with 100 units/ml penicillin, 100 µg/ml streptomycin, and 1% fetal bovine serum (Life Technologies). The baculovirus transfer vectors pVL1393-Laforin and the linearized baculoviral genomic DNA vector (ProGreen<sup>TM</sup>, AB vector) were co-transfected into Sf9 cells using ProFectin<sup>TM</sup> reagent (AB vector). Recombinant baculoviruses generated by homologous recombination were harvested at 3 days post transfection and were amplified to produce high-titer virus stocks. The expression of Laforin was assessed at 2–3 days post infection by Western blot, using an anti-His tag antibody (Applied Biological Materials).

### Purification of Recombinant Human Laforin

All of the protein purification steps were performed under ice-cold conditions. Cell pellets were resuspended and sonicated under hypotonic lysis buffer (20 mM 4-(2-hydroxyethyl)-1-piperazineethanesulfonic acid (HEPES) pH 7.4, 10 mM

sodium chloride, and 1 mM ethylenediaminetetraacetic acid (EDTA), 10 mM 2-mercaptoethanol, 10% (v/v) glycerol, and 1 mM phenylmethylsulfonyl fluoride). The crude lysate was centrifuged at 40,000×g for 1 h at 4 °C. The resulting supernatant was applied to an amylose column (New England BioLabs) and washed with wash buffer (20 mM HEPES pH 7.4, 150 mM sodium chloride, 1 mM EDTA, 10 mM 2-mercaptoethanol, 10% (v/v) glycerol, and 10 mM maltose). The recombinant Laforin was further eluted with elution buffer (20 mM HEPES pH 7.4, 150 mM sodium chloride, 1 mM EDTA, 10 mM 2-mercaptoethanol, 10% (v/v) glycerol, and 500 mM maltose). The eluted protein was pooled and concentrated prior to loading on to Superdex<sup>TM</sup> 200 HiLoad<sup>TM</sup> 16/60 prep-grade column (GE Healthcare) equilibrated with the buffer of 20 mM HEPES pH 7.4, 300 mM sodium chloride, 1 mM EDTA, 10 mM 2-mercaptoethanol, and 500 mM maltose. The homogeneity of the purified recombinant Laforin was examined by SDS-PAGE with Coomassie Blue staining. The final protein concentration was determined by Bradford assay (Sigma).

### Measurement of Dynamic Light Scattering

Dynamic light-scattering experiments were performed using a DynaPro-titan instrument (Wyatt technology). The data were measured at 25 °C at 0.125 mg/ml protein in the buffer of 100 mM Tris-HCl pH 8.5.

### Phosphatase Activity Assay

pNPP, OMFP, and glycogen were used as substrates for measuring phosphatase activities of purified recombinant Laforins. The pNPP reaction mixture was 0.1 M sodium acetate, 0.05 M Bis-Tris pH 6.0, 2 mM dithiothreitol, and 50 mM pNPP. The OMFP mixture was 0.1 M Tris-HCl pH 8.0, 40 mM sodium chloride, 2 mM dithiothreitol, and 0.5 mM OMFP. 10 µg of recombinant Laforins were added to each reaction mixtures and stored at 30 °C for 20 min. The absorbance of the reaction products were measured at 405 nm for pNPP assay and at 477 nm for OMFP assay using a microplate reader (Molecular Devices). The phosphatase assay with glycogen was carried out under the reaction mixture of 100 mM sodium acetate, 50 mM Bis-Tris pH 6.0, 2 mM dithiothreitol, and 1 mg/ml glycogen at 37 °C. The released phosphate was measured with malachite green reagent (Cayman Chemical) using the same microplate reader at 620 nm. Data were expressed as means ± standard deviation of at least three independent experiments. Statistical differences between groups were analyzed using one-way analysis of variance (ANOVA).

**Acknowledgments.** This work was supported by the Bio & Medical Technology Development Program through the National Research Foundation of Korea (NRF) funded by the Ministry of Science, ICT & Future Planning (NRF-2011-0030032) to B.I.L.

## REFERENCES

1. (a) Gentry, M. S.; Roma-Mateo, C.; Sanz, P.; Laforin, a protein with many faces: glucan phosphatase, adapter protein, et alii. *The FEBS Journal* **2013**, *280*(2), 525; (b) Gentry, M. S.; Dixon, J. E.; Worby, C. A., Lafora disease: insights into neurodegeneration from plant metabolism. *Trends Biochem. Sci.* **2009**, *34*(12), 628.
2. Ganesh, S.; Puri, R.; Singh, S.; Mittal, S.; Dubey, D., Recent advances in the molecular basis of Lafora's progressive myoclonus epilepsy. *J. Hum. Genet.* **2006**, *51*(1), 1.
3. Tagliabracci, V. S.; Turnbull, J.; Wang, W.; Girard, J. M.; Zhao, X.; Skurat, A. V.; Delgado-Escueta, A. V.; Minassian, B. A.; Depaoli-Roach, A. A.; Roach, P. J., Laforin is a glycogen phosphatase, deficiency of which leads to elevated phosphorylation of glycogen *in vivo*. *Proceedings of the National Academy of Sciences of the United States of America* **2007**, *104*(49), 19262.
4. Minassian, B. A.; Lee, J. R.; Herbrick, J. A.; Huizenga, J.; Soder, S.; Mungall, A. J.; Dunham, I.; Gardner, R.; Fong, C. Y.; Carpenter, S.; Jardim, L.; Satishchandra, P.; Andermann, E.; Snead, O. C., 3rd; Lopes-Cendes, I.; Tsui, L. C.; Delgado-Escueta, A. V.; Rouleau, G. A.; Scherer, S. W., Mutations in a gene encoding a novel protein tyrosine phosphatase cause progressive myoclonus epilepsy. *Nat. Genet.* **1998**, *20*(2), 171.
5. Wang, J.; Stuckey, J. A.; Wishart, M. J.; Dixon, J. E., A unique carbohydrate binding domain targets the lafora disease phosphatase to glycogen. *J. Biol. Chem.* **2002**, *277*(4), 2377.
6. Cantarel, B. L.; Coutinho, P. M.; Rancurel, C.; Bernard, T.; Lombard, V.; Henrissat, B., The Carbohydrate-Active EnZymes database (CAZy): an expert resource for Glycogenomics. *Nucleic Acids Res.* **2009**, *37* (Database issue), D233.
7. Ganesh, S.; Tsurutani, N.; Suzuki, T.; Hoshii, Y.; Ishihara, T.; Delgado-Escueta, A. V.; Yamakawa, K., The carbohydrate-binding domain of Lafora disease protein targets Lafora polyglucosan bodies. *Biochem. Biophys. Res. Commun.* **2004**, *313*(4), 1101.
8. Tonks, N. K., Protein tyrosine phosphatases: from genes, to function, to disease. *Nature Reviews. Mol. Cell Biology* **2006**, *7*(11), 833.
9. Alonso, A.; Sasin, J.; Bottini, N.; Friedberg, I.; Friedberg, I.; Osterman, A.; Godzik, A.; Hunter, T.; Dixon, J.; Mustelin, T., Protein tyrosine phosphatases in the human genome. *Cell* **2004**, *117*(6), 699.
10. Tagliabracci, V. S.; Heiss, C.; Karthik, C.; Contreras, C. J.; Glushka, J.; Ishihara, M.; Azadi, P.; Hurley, T. D.; DePaoli-Roach, A. A.; Roach, P. J., Phosphate incorporation during glycogen synthesis and Lafora disease. *Cell Metab.* **2011**, *13*(3), 274.
11. Girard, J. M.; Le, K. H.; Lederer, F., Molecular characterization of laforin, a dual-specificity protein phosphatase implicated in Lafora disease. *Biochimie* **2006**, *88*(12), 1961.
12. Dukhande, V. V.; Rogers, D. M.; Roma-Mateo, C.; Donderis, J.; Marina, A.; Taylor, A. O.; Sanz, P.; Gentry, M. S., Laforin, a dual specificity phosphatase involved in Lafora disease, is present mainly as monomeric form with full phosphatase activity. *PloS one* **2011**, *6*(8), e24040.
13. Brewer, M. K.; Husodo, S.; Dukhande, V. V.; Johnson, M. B.; Gentry, M. S., Expression, purification and characterization of soluble red rooster laforin as a fusion protein in *Escherichia coli*. *BMC biochemistry* **2014**, *15*(1), 8.
14. Jarvis, D. L., *Baculovirus Expression Vectors*. In *The Baculoviruses*; Plenum Press: New York, 1997; Miller, L.K., Ed.; pp 389-431.
15. Roma-Mateo, C.; Solaz-Fuster Mdel, C.; Gimeno-Alcaniz, J. V.; Dukhande, V. V.; Donderis, J.; Worby, C. A.; Marina, A.; Criado, O.; Koller, A.; Rodriguez De Cordoba, S.; Gentry, M. S.; Sanz, P., *Biochem. J.* **2011**, *439*(2), 265.
16. Raththagala, M.; Brewer, M. K.; Parker, M. W.; Sherwood, A. R.; Wong, B. K.; Hsu, S.; Bridges, T. M.; Paasch, B. C.; Hellman, L. M.; Husodo, S.; Meekins, D. A.; Taylor, A. O.; Turner, B. D.; Auger, K. D.; Dukhande, V. V.; Chakravarthy, S.; Sanz, P.; Woods, V. L., Jr.; Li, S.; Vander Kooi, C. W.; Gentry, M. S., *Mol. Cell* **2015**, *57*(2), 261.