

B cell receptor-induced Ca^{2+} mobilization mediates F-actin rearrangements and is indispensable for adhesion and spreading of B lymphocytes

Máté Maus,* David Medgyesi,[†] Endre Kiss,* Andrea E. Schneider,* Ágnes Enyedi,[‡]
Nóra Szilágyi,[§] János Matkó,* and Gabriella Sármay*¹

Departments of *Immunology and [§]Physiology and Neurobiology, Eötvös Lóránd University, Budapest, Hungary; [†]Department of Molecular Immunology, Max Planck Institute of Immunology, Freiburg, Germany; and [‡]Department of Molecular Cell Biology, National Blood Center, Budapest, Hungary

RECEIVED MARCH 30, 2012; REVISED JANUARY 10, 2013; ACCEPTED JANUARY 11, 2013. DOI: 10.1189/jlb.0312169

ABSTRACT

B cells acquire membrane-bound cognate antigens from the surface of the APCs by forming an IS, similar to that seen in T cells. Recognition of membrane-bound antigens on the APCs initiates adhesion of B lymphocytes to the antigen-tethered surface, which is followed by the formation of radial lamellipodia-like structures, a process known as B cell spreading. The spreading response requires the rearrangement of the submembrane actin cytoskeleton and is regulated mainly via signals transmitted by the BCR. Here, we show that cytoplasmic calcium is a regulator of actin cytoskeleton dynamics in B lymphocytes. We find that BCR-induced calcium mobilization is indispensable for adhesion and spreading of B cells and that $\text{PLC}\gamma$ and CRAC-mediated calcium mobilization are critical regulators of these processes. Measuring calcium and actin dynamics in live cells, we found that a generation of actin-based membrane protrusion is strongly linked to the dynamics of a cytoplasmic-free calcium level. Finally, we demonstrate that $\text{PLC}\gamma$ and CRAC channels regulate the activity of actin-severing protein cofilin, linking BCR-induced calcium signaling to the actin dynamics. *J. Leukoc. Biol.* 93: 537–547; 2013.

Introduction

B lymphocytes mediate humoral immunity by recognizing foreign antigens and producing antigen-specific antibodies

Abbreviations: 2-APB=2-aminoethoxydiphenyl borate, Arp2/3=actin-related protein 2/3, Blnk=B cell linker, Btk=Bruton's tyrosine kinase, CLSM=confocal laser-scanning microscope, CRAC=calcium release-activated calcium channel, IS=immunological synapse, NMI=normalized mutual information, p-cofilin=phosphorylated cofilin, Ser 3=serine 3, SOCE=store-operated calcium entry, WASP=Wiskott-Aldrich syndrome protein

The online version of this paper, found at www.jleukbio.org, includes supplemental information.

against them. After their generation in the bone marrow, naive B cells migrate to the secondary lymphoid tissues to encounter antigen. Here, they gain direct access to small, diffusible antigens, whereas larger antigens are presented to them on the surface of APCs, such as DCs [1].

Recognition of membrane-tethered antigens initiates a process known as B cell spreading. B cells spread over the antigen-coated surface of the APCs by forming lamellopodial membrane protrusions in parallel with an intracellular calcium response [2]. This process leads to the formation of an IS between the APC and B cell [3], similar to that seen between APCs and T cells [4–6]. The spreading response is dependent on the affinity and density of the antigen [2] and requires the reorganization of the actin cytoskeleton [7–10].

Cell spreading relies on an outward force on the plasma membrane that is exerted by the formation of branched F-actin networks at the contact area. Formation of such networks requires the disruption of pre-existing long filaments by actin-severing proteins, such as cofilin, and the initiation of filament branching via binding of the activated Arp2/3 complex to the filaments. The Rap and Rac2 GTPases have been implicated to play a role in both processes and to be required for B cell spreading [11, 12]. The GTP-bound form of Rap1 is an upstream regulator of Vav2, a guanine-nucleotide exchanger protein that promotes actin polymerization and branching via activating the WASP family Verprolin-homologous protein/WASP pathway [13]. Rap also plays a role in the activation of cofilin. The actin-severing protein cofilin was shown to be essential for F-actin severing and cytoskeletal rearrangement that underlie B cell spreading [12].

Weber et al. [7] have implicated the importance of another pathway in B cell spreading that includes $\text{PLC}\gamma 2$, the Btk, and the Blnk. In B cells, $\text{PLC}\gamma$ is the main regulator of BCR-driven

1. Correspondence: Dept. of Immunology, Eötvös Lóránd University, Pázmány Péter sétány 1/c, 1117 Budapest, Hungary. E-mail: sarmayg@elte.hu

cytoplasmic Ca^{2+} mobilization. PLC γ gets phosphorylated by the Blnk/Btk complex [14, 15] to produce inositol-1,4,5-trisphosphate, a second messenger that rapidly releases Ca^{2+} from the ER [16]. Depletion of the ER Ca^{2+} stores is followed by the opening of plasma membrane CRAC channels [17], allowing Ca^{2+} influx from the extracellular space, a process that is known as SOCE [18], which is the main mechanism to provide a sustained increase in the cytoplasmic calcium in lymphocytes [19].

There are several pieces of evidence implicating that cytoplasmic Ca^{2+} may regulate actin rearrangements in several cell types [20–22]. A number of actin-binding proteins are sensitive to changes in the cytoplasmic calcium concentration: actin-severing protein gelsolin can induce gel-sol transition of the cytoplasm by calcium-dependent severing of actin filaments [23], and actin-bundling protein α -actinin is inhibited in a Ca^{2+} -dependent manner [24].

The effect of calcium on the structure of actin cytoskeleton is supported by measurements of localization and amount of F-actin after experimentally induced calcium transients. Most of the studies support that elevations in cell calcium have a specific, destructive effect on the cortical actin cytoskeleton [20–22].

Taken the importance of PLC γ in B cell spreading and the implications for a role of cytoplasmic Ca^{2+} in actin rearrangements, we tested the hypothesis that BCR-driven cytoplasmic Ca^{2+} mobilization can regulate actin rearrangements and is required for B cell spreading. We show that PLC γ and CRAC channel function is crucial for adhesion and spreading of B cells to antigen-tethered surfaces. The level of cytoplasmic Ca^{2+} regulates F-actin rearrangements. Furthermore, we show in live cells that the generation and disruption of actin-based membrane protrusions are linked to the level of cytoplasmic-free Ca^{2+} . We find that the activity of actin-severing protein cofilin depends directly on PLC γ and CRAC channel activity, linking BCR-induced cytoplasmic Ca^{2+} mobilization to actin cytoskeleton reorganization and B cell spreading.

MATERIALS AND METHODS

Reagents and antibodies

Antibodies used in our experiments were anti-p-cofilin, anti-Cofilin, and anti-actin (Sigma-Aldrich, Budapest, Hungary) and Alexa647-conjugated anti-rabbit IgG (Invitrogen, Carlsbad, CA, USA). Rabbit anti-mouse IgG and rabbit F(ab')₂ anti-mouse IgG (Jackson ImmunoResearch Laboratories, West Grove, PA, USA) were used for the stimulation of A20 cells. Alexa488-conjugated phalloidin (Invitrogen) was used for F-actin staining. Fluo-4 AM (Invitrogen) was used for calcium imaging. CellTracker Green (Invitrogen) was used for staining B cells for the spreading measurements. Ionomycin calcium salt from *Streptomyces globatus* (#10634), EGTA (E-4378), and latrunculin B were purchased from Sigma-Aldrich. Peroxidase-labeled antibodies were detected using the Pierce (Budapest, Hungary) ECL reagent. CRAC inhibitor 2-APB and PLC γ inhibitor U73122 were purchased from Sigma-Aldrich. Actin-stabilizing drug Jasplakinolide was purchased from Enzo Life Sciences (Butler Pike, PA, USA).

Cells

A20 (ATCC TIB208, I-Ad/Ed+) cells are murine B cell lymphomas and often used as a model of mature murine B cells. A20 cells were cultured in

RPMI 1640, supplemented with 2 mM L-glutamine, 1 mM Na-pyruvate, 50 μM 2-ME, antibiotics, and 10% FCS. Cells were kept at 37°C, 5% CO_2 in a humidified atmosphere.

Murine primary B lymphocytes were isolated from the spleen of adult (6–8 weeks old) female BALB/c mice by negative selection. After lyses of the red blood cells, cells were washed and treated with anti-Thy-1.2 antibody for 30 min at room temperature and washed once more. The cell suspension was incubated further with RPMI-1640 medium containing rabbit complement for 30 min at 37°C. The percentage of B cells was analyzed by flow cytometry using fluorescently labeled anti-B220 and anti-CD3 antibodies and was found >90% in every case.

Constructs

mCherry-actin was cloned between *Bam*HI and *Eco*RI sites of the retroviral expression vector pMOWS that contains a puromycin resistance gene for selection [25]. mCherry was amplified with the primers gattggatccgccac-catgtgagcaaggcgag and cctgcatatgacctgtacagctcgtcat using as a template the pMIG-mCherry plasmid (kindly provided by Hassan Jumaa, Max Planck Institute of Immunobiology and Epigenetics, Freiburg, Germany). β -Actin was amplified with the primers ggcatatgggaatgatgacatagctcgtg and cttagaattcctagaagcacttgcgtgcac. The insertion was done sequentially using the *Nde*I site built in the relevant primers.

Retroviral transfection

A20 cells were retrovirally transduced as described previously [26]. Briefly, the Phoenix retroviral producer cell line was transfected using GeneJuice (Novagen), according to the manufacturer's instructions. Retroviral supernatants were harvested after 36 and 60 h post-transfection. Cells (2×10^5) were mixed with 500 μl retroviral supernatant and centrifuged at 300 g at 37°C for 3 h. Transduced cells were cultured in RPMI medium. Puromycin (10 $\mu\text{g}/\text{ml}$) was added to the culture medium 24 h later. Three days later, positive cells were sorted using a Beckman Coulter (Nyon, Switzerland) MoFlo cell sorter.

Confocal microscopy

For single-cell calcium imaging, A20 was grown on eight-well chambered Lab-Tek borosilicate coverglasses (Nunc, Rochester, NY, USA; 4×10^4 cells/chamber well). After 12 h in culture, cells were washed and incubated for 15 min at 37°C in 10 $\mu\text{g}/\text{ml}$ Fluo-4 AM solution prepared in RPMI-1640 medium (Sigma-Aldrich). After loading, samples were washed four times. Images were taken with a Fluoview 500 (Olympus, Hamburg, Germany) CLSM using an average time resolution of 1.375 s/frame. An Ar-ion laser (488 nm) was used for the excitation of Fluo-4 fluorescence, which was detected through a band-pass filter 520 ± 20 nm. EGTA was used in 2 mM or in 20 mM for inducing cytoplasmic Ca^{2+} oscillations in mCherry-actin-expressing A20 cells, ionomycin in 2 $\mu\text{g}/\text{ml}$ concentration.

B cell spreading was also analyzed by CLSM in Lab-Tek microplates coated with mouse-specific anti-IgM or -IgG (10 $\mu\text{g}/\text{ml}$). After 60 min, microplates at 37°C incubation were washed three times with carbonate buffer. Then, microplates were further coated with BSA (1 mg/ml) for 30 min at 37°C. A20 or spleen B cell suspensions at 2×10^5 density were pretreated occasionally with 2.5 μM U73122 or 100 μM 2-APB for 5 min at 37°C before the spreading. After pretreatment, cells were pipetted into the wells for 2, 4, 6, or 8 min and then fixed with 2% PFA (5 min, 37°C). After the spreading and fixation, microplates were washed twice with PBS. The adhered cells were stained with 66 nM phalloidin Alexa488 for 5 min at 37°C and then washed four times with PBS. The contact surfaces of the cells were monitored in CLSM (excitation: 488 nm). The contact zone area was determined using ImageJ software (<http://rsbweb.nih.gov/ij>).

Calcium measurement by flow cytometry

A20 cells were washed and incubated for 15 min at 37°C in 10 $\mu\text{g}/\text{ml}$ Fluo-4 AM solution, prepared in RPMI-1640 medium (Sigma-Aldrich).

After loading, samples were washed and resuspended in RPMI 1640. Ionomycin (2 $\mu\text{g}/\text{ml}$) was used to raise or 2 mM EGTA to lower the cytoplasmic-free calcium level. Fluorescence measurements were performed using FACSCalibur or FACSaria III (Becton Dickinson, Mountain View, CA, USA) flow cytometers using an air-cooled argon ion laser (488 nm excitation) and red diode laser (632 nm excitation). Data collection and analysis were done with CellQuest Pro and DIVA software. During data analysis, dead cells were excluded by negative gating based on PI uptake.

Measurement of F-actin level by flow cytometry

A20 cells ($5 \times 10^5/\text{tube}$) were collected in 300 μl RPMI 1640 and treated at 37°C with 2 $\mu\text{g}/\text{ml}$ ionomycin, 2 mM EGTA, or both for time intervals as indicated. Immediately after treatment, 100 μl of a solution containing 10% PFA, 0.05% Triton-X, and 66 nM Alexa488-conjugated phalloidin was mixed to the samples. After labeling on ice for 10 min, samples were washed carefully and analyzed quantitatively on a FACSaria III (Becton Dickinson) flow cytometer.

Immunofluorescence

After stimulation on an eight-well chamber, cells were fixed in 3% PFA for 5 min at 37°C , then incubated at 4°C for 10 min, washed two times with RPMI 1640, and permeabilized in 0.1% Triton X-100 (Sigma-Aldrich) at room temperature for 5 min. After a triple washing with PBS, cells were stained with Alexa448-conjugated phalloidin and in the case of primary B cells, with rabbit anti-cofilin antibody. Alexa647-conjugated anti-rabbit IgG was used in a concentration provided by the manufacturer.

Stimulation of primary B cells with anti-IgM and preparation of cell lysates

Cells (2×10^6)/sample were stimulated with 5 $\mu\text{g}/\text{ml}$ mouse-specific anti-IgM antibody (rabbit) at 37°C for 0, 2, and 5 min, respectively. Cells were pelleted for 20 s and frozen immediately in liquid nitrogen. For lysis of the cells, cells were solubilized in 20 μl lysis buffer containing 1% Triton X-100, 50 mM HEPES (pH 7.4), 100 mM NaF, 250 mM NaCl, 10 mM EDTA, 2 mM sodium- α -vanadate, 10 mM sodium pyrophosphate, 10% glycerol, 10 $\mu\text{g}/\text{ml}$ aprotinin, 10 $\mu\text{g}/\text{ml}$ pepstatin, 5 $\mu\text{g}/\text{ml}$ leupeptin, and 0.2 mM PMSF. After 30 min of incubation on ice, cell lysates were centrifuged at 15,000 g for 15 min at 4°C , and the supernatants were collected for subsequent experiments.

Immunoblotting

Samples were subjected to electrophoresis through 15% SDS-PAGE gel, and the proteins were blotted onto nitrocellulose membranes (Bio-Rad, Budapest), probed with the appropriate antibodies, and developed by HRP-conjugated anti-rabbit IgG, followed by ECL detection (Amersham).

Measurement of B cell adhesion-spreading response

Ninety-six-well flat-bottom ELISA plates were coated with mouse-specific anti-IgM or -IgG (2 $\mu\text{g}/\text{ml}$). After 30 min incubation at 37°C and 90 min at room temperature, ELISA plates were washed several times. After washing, plates were coated further with BSA (3 mg/ml) for an additional 60 min. A 100- μl cell suspension (5×10^5 cells/ml) was pipetted into each well that was used in the experiment. Cells in the suspension were stained previously with CellTracker Green (Invitrogen), according to the instructions of the manufacturer. If indicated, cells were treated with U73122 (2.5 μM) or with 2-APB (100 μM) for 5 min or with Jasplakinolide for 30 min before subjecting them to the plate. Cells were incubated on the ELISA plate at 37°C , 5% CO_2 , in a humidified atmosphere for a certain time indicated in the case of every experiment, then fixed, and washed four times. To determine the amount of stably adhered and spreaded cells to the surface, fluorescence was measured

in a Fluoroskan Ascent FL (Thermo Scientific, Waltham, MA, USA) fluorescent ELISA microplate reader.

Calculation of cell roundness and Mander's coefficients

Roundness of cells was defined as $4 \times (\text{area of the cell}) / [\pi \times (\text{major axis of the cell})^2]$ and was calculated by initially determining the outline of individual cells in every frame with the Dynamic threshold plug-in of Image J software based on the fluorescent image. Roundness defined as above was then calculated using the Shape Descriptor ImageJ plug-in [27].

For calculation of Mander's colocalization coefficients [28], Image correlation analysis was performed in ImageJ after background subtraction [28].

Statistical methods

For testing the differences between the experimental interdependence of cytoplasmic Ca^{2+} and cortical mCherry-actin signal and surrogate data, the Neyman's smooth statistic was applied (for further details, see the next section). Unpaired Student's t -test was applied to test for statistical differences between datasets in all other experiments.

Mathematical/statistical analysis of dynamic interdependence of cytoplasmic-free Ca^{2+} and cortical F-actin levels

Data for calculating the interdependence of cytoplasmic Ca^{2+} and cortical actin were obtained by CLSM imaging of A20 cells expressing the fusion protein mCherry-actin. Cells were loaded with the Ca^{2+} indicator Fluo-4, and oscillations were evoked by EGTA (20 mM). Numeric values of the amount of cortical actin and cytoplasmic level of free Ca^{2+} were obtained from individual images by defining a region of interest around the plasma membrane from frame to frame manually. Experimental data were obtained from four different measurements.

As Ca^{2+} and cortical actin signals were contaminated by measurement noise, smoothing spline was applied as preprocessing. Very low frequency oscillations were eliminated using trend removal procedures. Instantaneous phases were calculated by Hilbert transform [61]. To detect and quantify synchronization, an entropy-based synchronization index, the NMI, was calculated (also known as symmetric uncertainty).

To detect and quantify synchronization for the two variables, an entropy-based synchronization index, the mutual information (I) was calculated as follows

$$I(X; Y) = \sum_{y \in Y} \sum_{x \in X} p(x, y) \log \left(\frac{p(x, y)}{p_1(x) p_2(y)} \right),$$

where $p(x, y)$ is the joint probability distribution function of cytoplasmic level of free Ca^{2+} (x) and the amount of cortical actin (y), and $p(x)$ and $p(y)$ are the marginal probability density functions of the two variables.

NMI was obtained by normalization of $I(X; Y)$ by $H(X) + H(Y)$, the sum of marginal entropies.

NMI has important advantages over other synchronicity measures—most of all, its ability to grasp nonlinear interdependence (beyond linear dependency) and provide a general characterization of all possible frequency locking [62]. As a result of the normalization, the value of NMI falls in the range $[0, 1]$. To expose the dynamics of the mutual interaction between the Ca^{2+} and cortical actin signals, windowed ("running") entropies were estimated within 15 consecutive, nonoverlapping windows of 52-s lengths.

For statistical comparisons, "fully synchronized" and "asynchronous" surrogates were generated under two null hypotheses, proposing that the data show both extremes—the possible lowest and highest synchronization. Asynchronous surrogates were created by shuffling of the original phases using permutation. Fully synchronized surrogates were the realizations of experimental data reproduced with identical phases. For testing the differences between the experimental and surrogate data, the Neyman's smooth

statistics [63] was used, making it data driven by applying the Schwarz's selection rule. Mathematical calculations were accomplished with Matlab 6.5 software environment (MathWorks, Natick, MA, USA) by the application of self-devised scripts for preprocessing, entropy measures, surrogate analysis, and adaptive Neyman's tests.

RESULTS

BCR-induced calcium mobilization is a prerequisite for B cell adhesion/spreading

To understand the role of BCR-mediated Ca^{2+} mobilization in the regulation of B cell adhesion and spreading, we used the compounds U73122, an inhibitor of $\text{PLC}\gamma$, and 2-APB, an inhibitor of CRAC channels, to model complete loss of Ca^{2+} mobilization or loss of Ca^{2+} influx only throughout the spreading response. With the use of flow cytometry, we verified that 2-APB (100 μM) significantly reduces the peak of cytoplasmic Ca^{2+} (Fig. 1A and B), whereas inhibiting $\text{PLC}\gamma$ by U73122 (2.5 μM) fully abolishes Ca^{2+} mobilization upon BCR stimulation in mouse B lymphoma cell line A20 and in murine splenic B cells (Fig. 1A and B).

We modeled adhesion and spreading of B cells on APCs by incubating A20 cells or murine splenic B cells on surfaces that were previously coated with an anti-Ig antibody. After 2, 4, 6, or 8 min, cells were fixed, and nonadherent cells were removed by washing. To quantify adhesion of cells prior to incubation on the antigen-tethered surfaces, cells were loaded with CellTracker Green. After fixation and washing, the relative number of adherent cells was determined by measuring the fluorescence on the anti-Ig-coated surface. The number of adherent cells showed a time-dependent increase for untreated A20 cells (Fig. 1C) and primary B cells (Fig. 1D). Inhibition of Ca^{2+} influx by 2-APB markedly reduced the ability of cells to adhere to the antigen surfaces; after 8 min of incubation, we measured an $\sim 30\%$ reduction in the relative number of adherent A20 cells (Fig. 1C) and an $\sim 40\%$ reduction in adherent primary B cells (Fig. 1D) when compared with untreated cells. Inhibition of $\text{PLC}\gamma$ by U73122 had a more severe effect, reducing the relative number of stably adhering cells by $\sim 60\%$ in the case of A20 cells (Fig. 1C) and by $\sim 80\%$ in the case of primary B cells (Fig. 1D) after 8 min of incubation.

To investigate how inhibition of BCR-mediated Ca^{2+} mobilization affects B cell spreading, in particular, cells, able to adhere with or without 2-APB or U73122 treatment, were stained for F-actin with phalloidin-Alexa488, and images of the adhesive area were taken using confocal microscopy. Whereas control A20 and murine splenic B cells once adhering to the antigen surface underwent spreading by forming radial lamellipodia, cells treated with 2-APB or U73122 severely lacked radial lamellipodia formation (Fig. 1E and F). The adhesive area of control cells increased in a time-dependent manner, whereas 2-APB and U73122 treatment almost completely abolished the expansion of the adhesive area (Fig. 1G and H). Based on our results, we concluded that BCR-mediated cytoplasmic Ca^{2+} mobilization is indispensable for adhesion and spreading of B cells to antigen-tethered surfaces.

Cytoplasmic level of free Ca^{2+} regulates F-actin level in B cells

The shape of lymphocytes is determined primarily by the cortical actin cytoskeleton. Resting lymphocytes have a spherical structure covered by short microvilli, dense bundles of actin filaments enclosed in plasma membrane [29]. BCRs on resting B cells are trapped into focally localized microclusters by the subplasma membrane actin network [30]. Adhesion and spreading of B cells to the antigen-tethered surface require the remodeling of the actin cytoskeleton and polarization of the BCRs to the contact surface. This may be achieved by an early event of F-actin depolymerization [31] and subsequent rearrangement of the actin structure.

There are several pieces of evidence implicating that cytoplasmic Ca^{2+} can regulate actin rearrangements [20–22]. We hypothesized that BCR-mediated Ca^{2+} mobilization is required for the remodeling of the subplasma membrane actin cytoskeleton, thereby limiting B cell adhesion and spreading. To understand how calcium mobilization affects morphology and structure of the actin cytoskeleton of B cells, adherent A20 cells loaded with the fluorescent calcium indicator Fluo-4 were exposed to the calcium ionophore ionomycin [32] and investigated by single-cell confocal imaging. The exposure of cells to ionomycin (2 $\mu\text{g}/\text{ml}$) induced a four- to sixfold increase in the intracellular-free calcium level (Fig. 2A) and was followed by a dramatic transition in cell shape, resulting in loss of protrusive membrane structures and ultimately leading to rounding of cells (Fig. 2A and Supplemental Video 1). The exposure of cells to ionomycin and the Ca^{2+} chelator EGTA (2 mM) or to EGTA (2 mM) alone had no apparent effect on cell morphology (Fig. 2B and C and Supplemental Videos 2 and 3), suggesting that rounding of cells upon ionomycin exposure was mediated by the Ca^{2+} influx.

We quantified the morphological transition upon Ca^{2+} influx by measuring roundness of individual cells before and after the treatment. Initial roundness of cells treated with ionomycin, ionomycin + EGTA, or EGTA alone was statistically not different (Fig. 2D). Twelve minutes of ionomycin treatment induced an $\sim 25\%$ increase in the roundness of cells, whereas ionomycin + EGTA or EGTA alone had no statistically significant effect on roundness of cells (Fig. 2E).

Staining cells with phalloidin-Alexa488, a fungal toxin specifically binding filamentary actin, revealed that ionomycin-induced Ca^{2+} influx had a specific disruptive effect on the cortical actin cytoskeleton. Whereas cells exposed to EGTA or ionomycin + EGTA showed an actin structure similar to control cells with F-actin-rich lamellipodia and membrane ruffles, cells exposed to ionomycin lacked all kinds of peripheral-protrusive actin structures, indicating a rearrangement of the cortical actin network (Fig. 2F).

To investigate further how Ca^{2+} influx leads to the loss of protrusive actin structures, we measured F-actin levels with a flow cytometry-based assay in nonadherent A20 cells treated with ionomycin, ionomycin + EGTA, EGTA alone, or latrunculin B, a compound that disrupts actin filament organization. Ionomycin exposure induced a disintegration of actin fila-

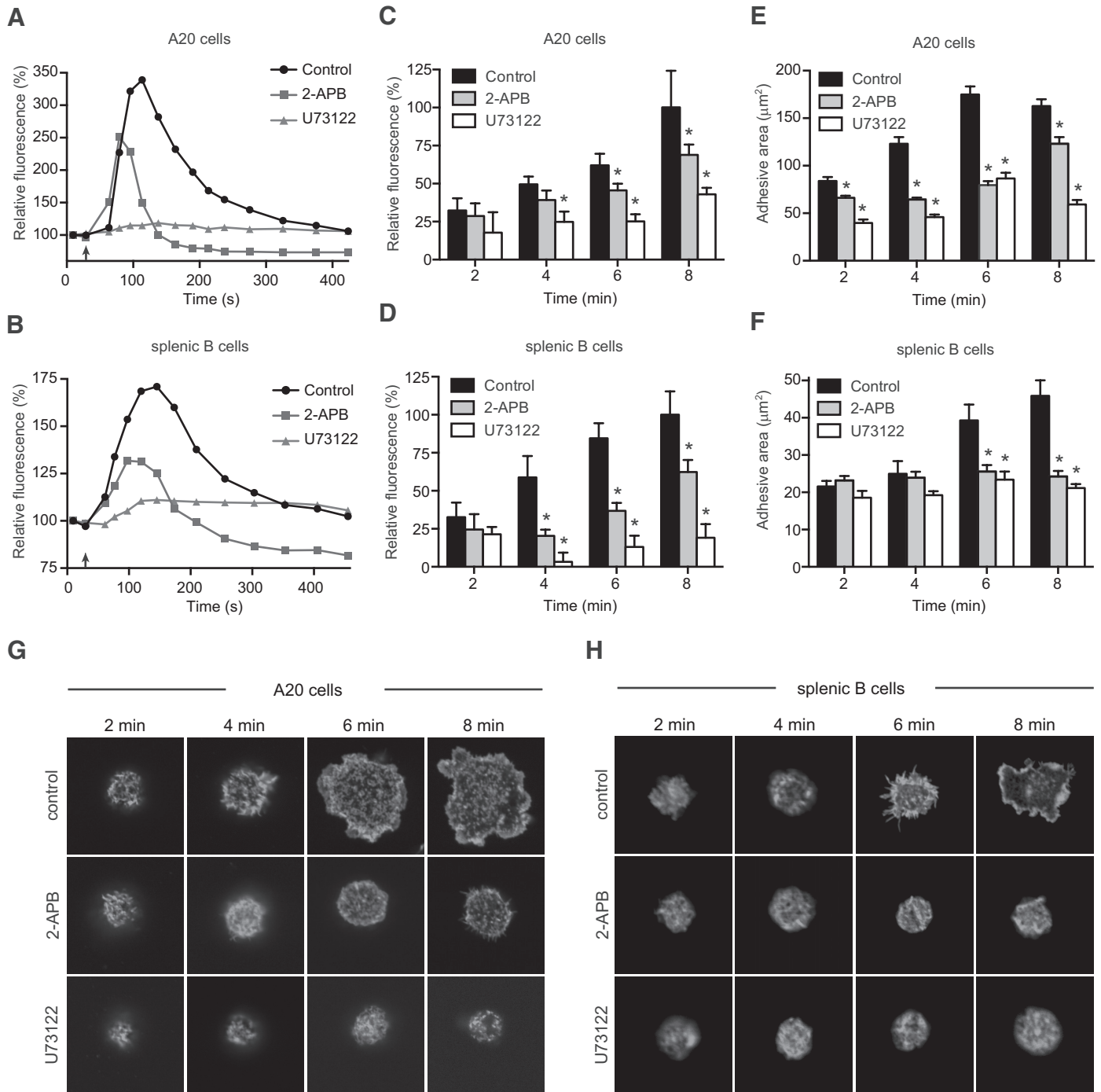


Figure 1. BCR-mediated calcium mobilization is indispensable for the B cell adhesion/spreading response. Calcium response of A20 cells (A) and splenic B cells (B) to anti-IgG or anti-IgM ($5 \mu\text{g}/\text{ml}$) stimulation, as detected by Fluo-4 fluorescence. Relative fluorescence of anti-Ig-coated surfaces after incubation for the given time ($n=6$ in every case) with CellTracker Green-loaded A20 (C) or mouse primary B cells (D) is also shown. Cells were pretreated with 2-APB or U73122 if indicated. All values were statistically tested by Student's unpaired t -test ($*P < 0.05$). Fluorescence values were normalized by taking the average of anti-Ig-coated control samples with 8 min incubation time as 100%. Error bars represent the SEM. The contact area of A20 (E) and splenic B cells (F), was determined in the above experiment in control and pretreated cells. CLSM images recorded at the given times (G and H, respectively) are also displayed.

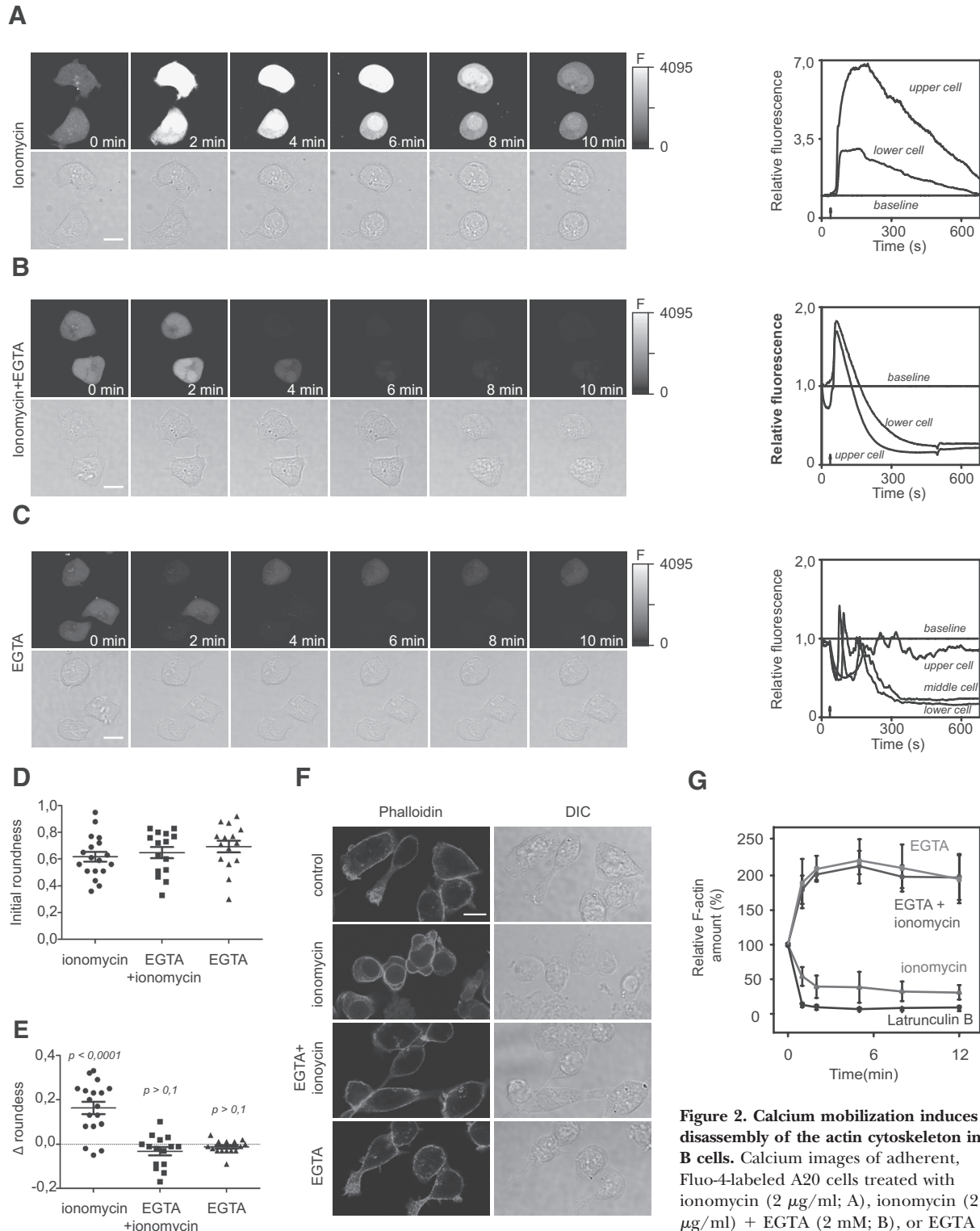


Figure 2. Calcium mobilization induces disassembly of the actin cytoskeleton in B cells. Calcium images of adherent, Fluo-4-labeled A20 cells treated with ionomycin (2 μ g/ml; A), ionomycin (2 μ g/ml) + EGTA (2 mM; B), or EGTA (2 mM) alone (C). Upper panels show the fluorescent images color-mapped with a color gradient from white (high fluorescence) to black (low fluorescence), as indicated by the color bar; lower panels are the DIC images. The relative fluorescence as a function of time is indicated on the right side. Arrows on the diagrams indicate the time-points of exposure. Original bars, 10 μ m. Initial roundness of adherent A20 cells treated with ionomycin ($n=18$), ionomycin + EGTA ($n=15$), or EGTA alone ($n=15$; D) and alteration (Δ) of roundness after 12 min of the same treatments (E). (F) Fluorescent (left) and DIC images (right) of control, ionomycin, EGTA + ionomycin, or EGTA-treated, adherent A20 B cells labeled with phalloidin-Alexa488 and recorded by CLSM (green: filamentous actin). Original bar, 10 μ m. (G) Relative fluorescence of phalloidin-Alexa488 as a function of time in A20 cells treated with EGTA, EGTA + ionomycin, ionomycin, or latrunculin B (2 μ M) is also shown. Fluorescence values are normalized for the baseline. Mean \pm SD of three independent experiments is shown.

ments (Fig. 2G) comparable with that of latrunculin B. The level of F-actin reduced to 60% after 1 min of treatment, whereas after 8 min, it decreased to as low as 35%. Interestingly, treatments with EGTA or ionomycin + EGTA, which were both found to lower cytoplasmic level of the free calcium (Fig. 2B and C), had an opposite effect; they induced a saturation curve-like growth in the amount of F-actin (Fig. 2G). After 2 min of treatment, the amount of F-actin had doubled and reached its saturation. These results suggest an inverse correlation between the cytoplasmic level of free calcium and the amount of F-actin. Thus, we concluded that changes in cytoplasmic-free Ca^{2+} level can regulate actin rearrangements in B cells.

Cytoplasmic Ca^{2+} regulates production and disassembly of F-actin-based protrusive structures

Finding that the cytoplasmic level of free Ca^{2+} can regulate the amount filamentary actin, we wanted to understand if it can specifically regulate the production of protrusive actin structures, such as lamellipodia. To address this question, A20 cells, stably expressing mCherry-actin, were loaded with the calcium indicator Fluo-4 and investigated by time-lapse confocal microscopy. We induced calcium oscillations by chelating the extracellular calcium using EGTA and monitored the distribution of mCherry-actin. Calcium oscillations resulted in a pulsing production and disassembly of filopodia-like structures (Fig. 3A and B and Supplemental Video 4). Plotting the level of cytosolic-free Ca^{2+} and the amount of mCherry-actin in the cortical regions of cells as a function of time revealed a “quasi periodical synchronicity” between the two signals. The amount of mCherry-actin in the boundary regions oscillated together with Ca^{2+} but with an opposite phase (Fig. 3C).

We quantified the interdependency of Ca^{2+} and actin signals by calculating NMI, a number between one and zero that measures the mutual dependence of these two variables. NMI values scattered ~ 0.7 , reflecting a strong synchronicity between calcium and actin dynamics (Fig. 3D). The relevance of this strong phase locking was tested with the aim of a surrogate bootstrap technique and a subsequent adaptive Neyman's test. Synchronicity of the measured data proved to be highly significant ($P < 0.000001$) compared with the asynchronous surrogate data, and on the other hand, experimental NMIs differed much less from the fully synchronized surrogates ($P < 0.0013$).

Thus, we concluded that filopodia production and disassembly in A20 B cells strongly depend on the actual concentration of cytoplasmic Ca^{2+} . Lowering the cytoplasmic level correlates with filopodia growth, whereas raising it drives filopodium disassembly.

Actin cytoskeleton reorganization is required for B cell spreading

Our previous experiments have demonstrated that BCR-driven Ca^{2+} mobilization is crucial for B cell spreading. We also found that cytoplasmic Ca^{2+} regulates F-actin rearrangements and controls the production and disassembly of protrusive actin structures. To confirm that actin rearrangements are a pre-

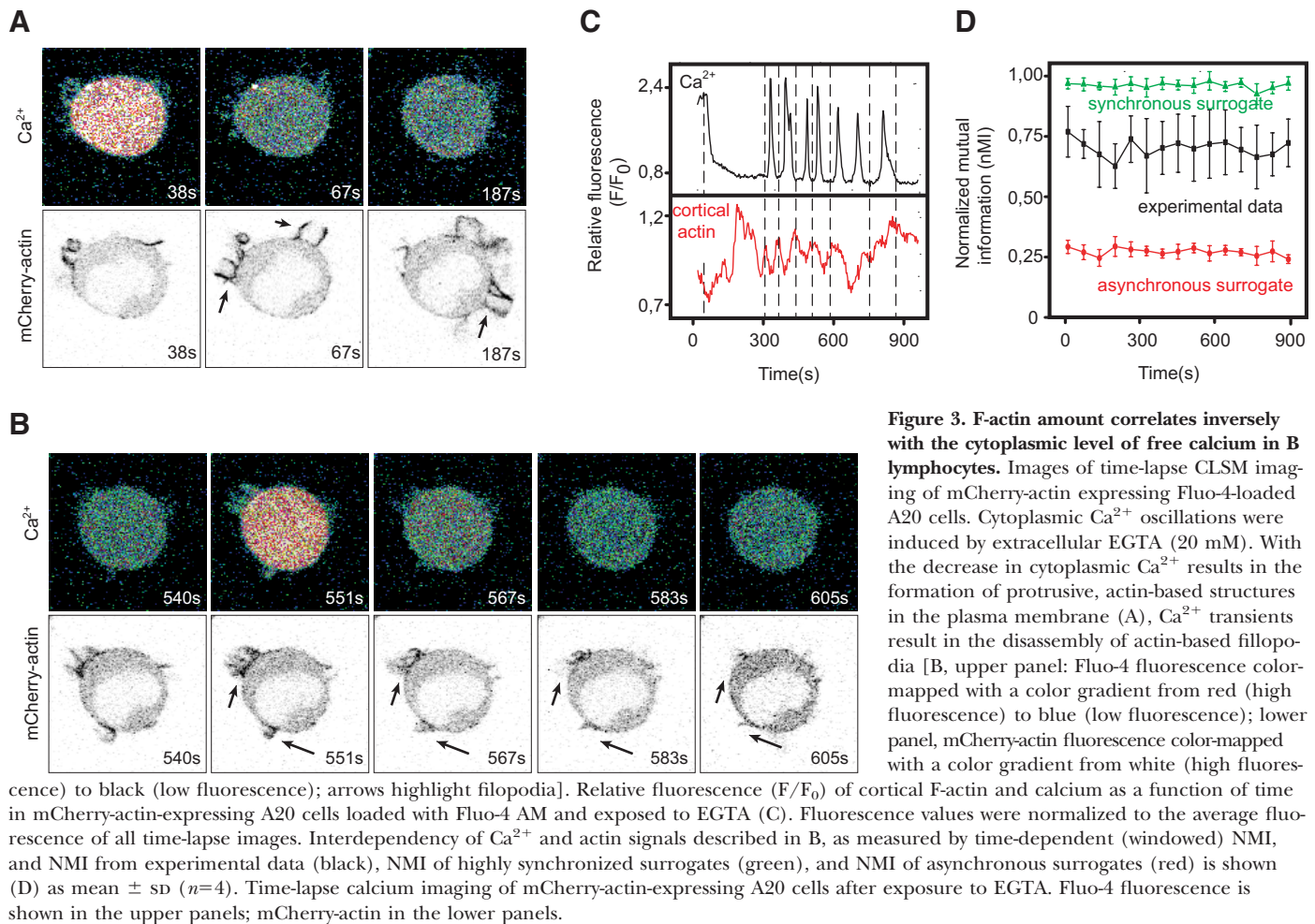
requisite to B cell adhesion and spreading, we treated A20 cells and primary splenic B cells with increasing concentrations of Jasplakinolide, a compound that results in actin polymerization and actin filament stabilization [33, 34]. We quantified the ability of cells to adhere and spread to antigen-tethered surfaces after Jasplakinolide treatment. At lower concentrations of Jasplakinolide ($0.5 \mu\text{M}$ for primary B cells; $2 \mu\text{M}$ for A20 cells), we observed a slight but not significant increase in the relative number of cells attaching to the anti-Ig-coated surface when compared with control cells (Fig. 4A and B). This may be a result of the effect of Jasplakinolide to enhance BCR diffusion in the plasma membrane and facilitate the polarization of BCRs to the contact surface in this concentration range [7]. Raising the concentration of Jasplakinolide induced a dose-dependent, saturating decline in the number of cells adhering to the anti-Ig-coated surfaces. We observed an $\sim 60\%$ decrease ($4 \mu\text{M}$ Jasplakinolide) in the case of primary B cells (Fig. 4A) and an $\sim 80\%$ decrease ($16 \mu\text{M}$ Jasplakinolide) in the case of A20 cells (Fig. 4B) in the number of adherent cells at the saturating concentration when compared with untreated cells. Thus, we concluded that depolymerization of actin filaments is a prerequisite of B cell adhesion and spreading.

Cofilin-1, a candidate to transmit Ca^{2+} signal to the actin cytoskeleton

Cofilin is a major regulator of lamellipodia formation in several cell types [35] and has been shown to play an important role in controlling IS formation in T cells [36] and B cells [12]. It is a 19-kDa actin-severing protein that may promote depolymerization and polymerization of actin filaments [37].

The activity of cofilin is negatively regulated by the phosphorylation of the Ser 3 residue, a modification that antagonizes its actin-binding ability [38, 39]. In resting cells, cofilin is phosphorylated and thereby, inactive. Elevation of the intracellular Ca^{2+} concentration stimulates cofilin dephosphorylation in various cell types via a direct or indirect interaction with the calcium-dependent phosphatase calcineurin [40–42]. Given the role of cofilin in B cell spreading and its calcium-dependent regulation in other cell types, we asked if cofilin can transmit the calcium signal to the actin cytoskeleton in B cells and thereby, be a link between BCR-mediated Ca^{2+} mobilization and B cell spreading.

Mouse primary B cells were stimulated with anti-IgM, cell lysates were prepared and subjected to Western blotting for anti-p-cofilin (Ser 3; Fig. 4C), and phosphorylation was quantified by densitometry ($n=3$; Fig. 4D). BCR engagement in control cells induced, on the average, an $\sim 60\%$ dephosphorylation of cofilin after 2 min, which was followed by a small but not significant rephosphorylation after 5 min. When SOCE was abrogated with 2-APB, unstimulated cells had a lower basal level of cofilin phosphorylation when compared with controls. However, BCR engagement in the 2-APB-treated cells did not lead to dephosphorylation of cofilin, but on the contrary, it induced significant rephosphorylation. Inhibition of PLC γ by U73122 induced a roughly twofold hyperphosphorylation of cofilin in unstimulated and stimulated cells. Thus, we conclude that dephosphorylation of cofilin, a major regulator of B



cell spreading [12], depends on BCR-mediated Ca²⁺ mobilization.

Dephosphorylation of the Ser 3 residue in cofilin was shown to be a prerequisite of B cell spreading [12]; little is known, however, about how cofilin-mediated F-actin severing occurs throughout B cell spreading [35]. To address this question, we stained primary B cells, spreading over anti-IgM-tethered surfaces for F-actin (phalloidin-Alexa488) and cofilin (anti-cofilin+anti-rabbit-Alexa647), and took images of the adherent contact zone using confocal microscopy (Fig. 4E). After 4 min of incubation on the antigen-tethered surface, the average diameter of the contact zone of cells was $6.0 \mu\text{m} \pm 0.3 \mu\text{m}$, and cofilin showed a strong colocalization with the clustered F-actin. After 6 min, the average diameter of the adherent zone was $9 \mu\text{m} \pm 0.7 \mu\text{m}$, and the contact area could be clearly divided into a central zone with focal adhesion points and to a peripheral zone with lamellipodia densely packed with filamentous actin. Cofilin, at this stage, resided almost exclusively in the F-actin-rich lamellipodia (Fig. 4E). After 8 min, cells have reached their maximum size or began contracting; the average diameter of the contact zone was $9 \mu\text{m} \pm 0.3 \mu\text{m}$. Cofilin started to pull back from the lamellipodia into the central zone. When Manders colocalization coefficients between F-actin and cofilin were plotted against the measured, average di-

ameter of the contact zone, a clear connection of the two variables became outlined. Both the colocalization of cofilin to F-actin (Fig. 4F) and that of F-actin to cofilin (Fig. 4G) indicated a negative correlation toward the average diameter with very high colocalization in the initial phase of adhesion and spreading and a gradual decline as the stable contact was formed. These data suggest that actin-binding protein cofilin operates mostly throughout the adhesion and lamellipodia formation phase but draws back from the F-actin-rich regions once the stable contact/synapse is formed.

DISCUSSION

B cells may acquire antigens in soluble form or localized to the surface of APCs in the secondary lymphoid tissues. Contact with the surface-tethered antigen initiates a spreading response [3]. B cells adhere to the surface and grow protrusive radial membrane structures, lamellipodia, by generating newly formed branched actin filaments [2]. Signal transduction proteins PLC γ 2, Btk and Blnk, elements of the BCR-mediated Ca²⁺ mobilization pathway, were implicated to be indispensable in spreading of B cells [7]. Based on these, we hypothesized a direct role for intracellular Ca²⁺ in regulating B cell spreading.

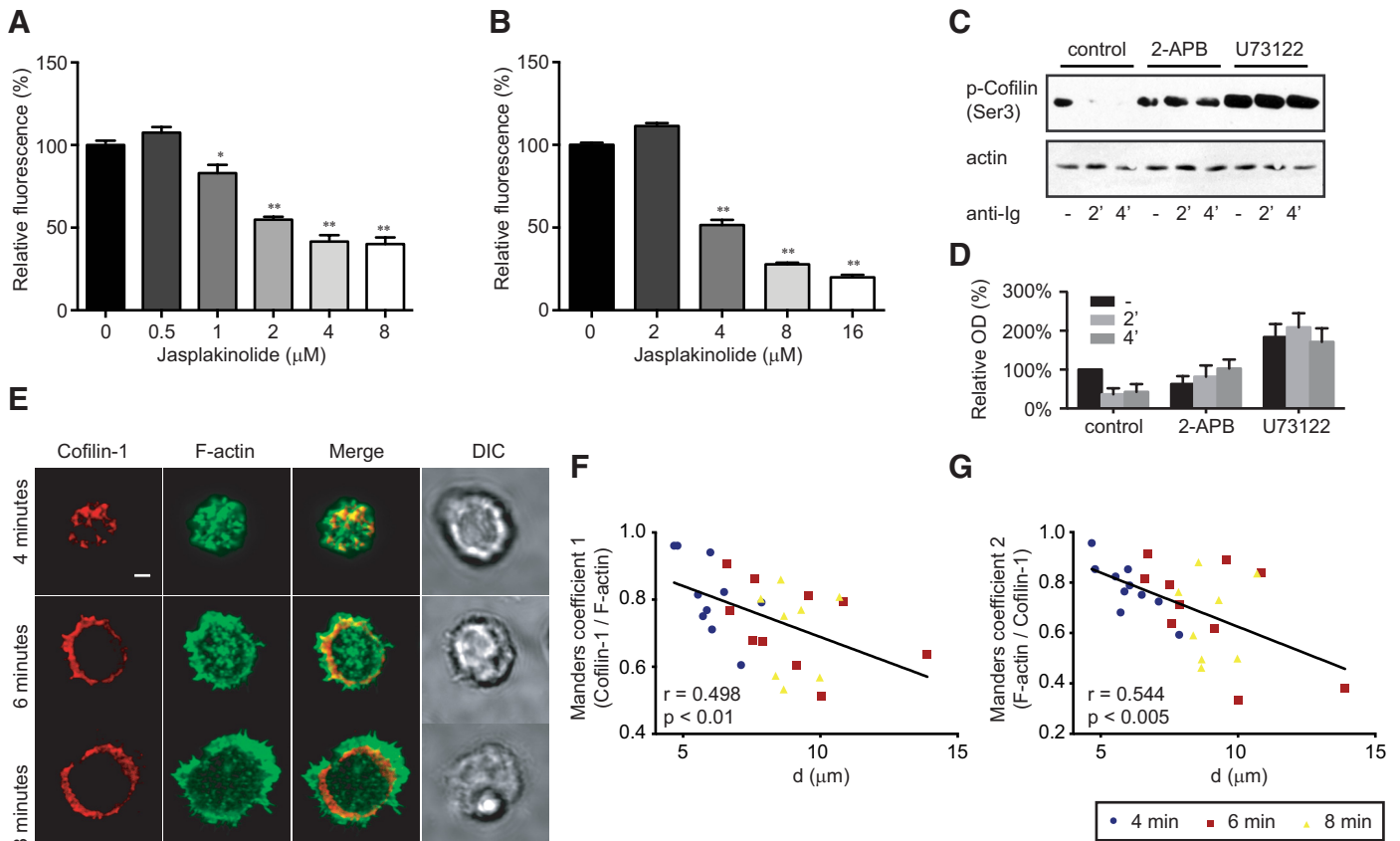


Figure 4. Actin remodeling protein cofilin-1 can transmit the BCR-induced calcium signal to the actin cytoskeleton during B cell spreading. Relative fluorescence of anti-Ig-coated surfaces after incubation with CellTracker Green-loaded mouse primary B cells (A) or A20 cells (B) for 8 min. Cells were pretreated with indicated concentrations of actin-stabilizing compound Jasplakinolide ($n=6$ in every case). Fluorescence was normalized for the untreated control samples. Error bars represent SEM. Significance: * $P < 0.05$ and ** $P < 0.005$. Detection of cofilin phosphorylation by Western blotting in mouse primary B cells (C). Cells were preincubated with SOCE inhibitor 2-APB or PLC inhibitor U73122. Semiquantitative analysis of the Western blots by densitometry (D). OD is normalized for unstimulated control samples. Immunofluorescence analysis of mouse primary B cells subjected to anti-IgM-coated surfaces (E). After incubation for the given time, cells were fixed and stained, and images of the adherent zone were taken. Cofilin (red), F-actin (green) fluorescence, and their merged image are shown from left to right, and the fourth column shows DIC images. Original bar, 2 μm . Colocalization of cofilin to F-actin (F) and F-actin to cofilin (G), measured by the Manders coefficient as a function of adherent zone diameter (d), are also shown.

We measured adhesion and spreading of B cells on antigen-tethered surfaces in the presence or absence of Ca^{2+} influx or Ca^{2+} release from the intracellular stores. We used the compound 2-APB to inhibit Ca^{2+} influx via CRAC channels and the compound U73122, an inhibitor of PLC γ , to completely abolish BCR-mediated Ca^{2+} mobilization. Whereas loss of Ca^{2+} influx severely reduced the number of B cells adhering to the antigen and the size of the adhesive area, full inhibition of BCR-induced Ca^{2+} mobilization abolished B cell adhesion and spreading almost completely. Previous reports implicated that knockdown of elements in the PLC γ pathway impairs lamellipodia formation during B cell contacts [7] and in other cell types [43, 44]. We confirmed these results and showed, in addition, that loss of lamellipodia formation in B cells with no functional PLC γ is a result of loss of BCR-induced Ca^{2+} mobilization. Similar results can be obtained with a milder approach, inhibiting Ca^{2+} influx only but leaving Ca^{2+} release from the ER stores intact by using the CRAC channel inhibitor

2-APB. Furthermore, our results highlight that not only B cell spreading but also, prior to that, B cell adhesion to the antigens relies on the secondary messenger Ca^{2+} .

We asked how cytoplasmic Ca^{2+} is involved in the regulation of adhesion and spreading of B cells. Previous reports have indicated that experimentally induced Ca^{2+} transients evoked by Ca^{2+} ionophores, such as ionomycin and A23187, can induce substantial changes in the actin cytoskeleton in several cell types [20–22]. We hypothesized that Ca^{2+} might mediate actin rearrangements in B cells and thereby, regulate synapse formation. To address this question, we modeled BCR-induced Ca^{2+} mobilization, keeping Ca^{2+} -independent signaling pathways downstream of PLC γ inactive with the use of the Ca^{2+} ionophore ionomycin. When adherent A20 B cells were exposed to ionomycin, cells lost actin-based lamellipodia, which was accompanied by a morphological transition from a spread-out cell shape to a rounded shape. This effect could be prevented when extracellular Ca^{2+} was chelated with EGTA. We

observed a similar disintegration of filamentary actin upon ionomycin-induced Ca^{2+} transients when cellular F-actin content was directly determined. Additionally, lowering the cytoplasmic Ca^{2+} concentration had an opposite effect, resulting in actin polymerization. These results suggest that cytoplasmic Ca^{2+} can regulate the reorganization of the actin cytoskeleton in B cells.

We achieved to visualize reorganization of the cortical actin cytoskeleton upon changing cytoplasmic calcium levels in live cells by inducing Ca^{2+} oscillations in mCherry-actin-expressing A20 cells. EGTA evoked calcium oscillations that provoked the production and disassembly of filopodia. The maximum amount of filopodia in the cortical region was detected when the free cytoplasmic calcium level was the lowest, whereas we observed a disintegration of filopodia upon Ca^{2+} transients. Statistical analysis of the interdependency of the amount of cortical actin and cytoplasmic level of free Ca^{2+} revealed a strong coupling of the two variables. We could show that actin and calcium dynamics are strongly synchronized in living B cells. Whereas calcium release events induce disintegration of protrusive actin structures, calcium sequestering induces filamentous actin growth.

The effect of cytoplasmic-free Ca^{2+} on cell shape and actin cytoskeleton was already reported in various cell types [20, 21, 45–47]; calcium was indicated to take part in the regulation of actin-defined movements, such as cell motility, chemotaxis, and polarization [48–52], but to our knowledge, this is the first time that such a phenomenon was described in important adaptive elements of the immune system in the B cells. No direct evidence has been reported so far on the specific inverse correlation between the cytoplasmic level of free calcium and the amount of F-actin. Our results suggest a mechanism by which BCR-induced calcium mobilization mediates initial F-actin depolymerization in B cells, generating new filament endings, whereas local Ca^{2+} sequestering may induce the polymerization of actin and the formation of protrusive actin structures.

Cofilin is known to regulate lamellipodia [53–56] and synapse formation in many cell types, including B lymphocytes [12]. Cofilin is regulated by phosphorylation on a negative regulatory Ser 3 residue. Dephosphorylation of this residue was shown to depend on cytoplasmic calcium in several cell types [40–42]. Therefore, we hypothesize that cofilin might be a link between the BCR-induced calcium release and the lamellipodia formation in B cells. To address this question, we investigated dephosphorylation of cofilin upon BCR engagement and found that ER-mediated Ca^{2+} release and SOCE are required for activation of cofilin in B cells. This result is in accordance with that seen in other cell types [40–42].

Investigating the localization of cofilin during B cell spreading, we observed that in the growing phase, cofilin resides in the F-actin-rich region of the adherent zone. The more spread out the synapse became, the less likely cofilin was found in the lamellipodia. This is in accordance with the described role of cofilin in lamellipodia formation [53–56]. In the initial phase of lamellipodia formation, cofilin mediates the formation new, fast-growing barbed ends by severing pre-existing actin filaments [57, 58]. At this phase, cofilin can also modulate the structure of the lamellipodia by competing with filament-branching protein complex Arp2/3 for actin binding [59] and favoring the assembly of unbranched filaments. In the late

phase, when G-actin monomers run short in the lamellipodia, the most important role of cofilin may be to supply an abundant pool of cytoplasmic actin monomers [60]; thus, cofilin withdraws from the lamellipodia.

In conclusion, we argue that BCR-mediated calcium mobilization regulates actin cytoskeleton rearrangements in B cells and is indispensable for B cell adhesion and spreading to antigen-tethered surfaces. Our findings highlight a link between calcium signaling and actin rearrangements that may go beyond the particular process of B cell spreading. However, further studies will be required to elucidate the exact mechanism that links cytoplasmic Ca^{2+} to actin dynamics.

AUTHORSHIP

M.M. designed, performed research, and drafted the manuscript. D.M., E.K., and A.E.S. performed experiments. Á.E. helped to design experiments. N.S. performed mathematical modeling analysis. J.M. and G.S. designed the experiments and drafted the manuscript.

ACKNOWLEDGMENTS

This work was supported by the Hungarian National Science Fund (OTKA) and the National Development Agency (NFU; CK80283 to Á.E., CK80935 to J.M., and CK80689 to G.S.). The European Social Fund has provided financial support to the project under Grant Agreement No. TÁMOP 4.2.1./B-09/1/KMR-2010-0003. Support of the Hungarian Academy of Sciences is also acknowledged. We thank Peter Nielsen and Miklos Nyitrai for comments on the manuscript and Michael Reth for his kind support, as well as Márta Pásztor for the skillful technical assistance.

REFERENCES

- Huang, N. N., Han, S. B., Hwang, I. Y., Kehrl, J. H. (2005) B cells productively engage soluble antigen-pulsed dendritic cells: visualization of live-cell dynamics of B cell-dendritic cell interactions. *J. Immunol.* **175**, 7125–7134.
- Fleire, S. J., Goldman, J. P., Carrasco, Y. R., Weber, M., Bray, D., Batista, F. D. (2006) B cell ligand discrimination through a spreading and contraction response. *Science* **312**, 738–741.
- Batista, F. D., Iber, D., Neuberger, M. S. (2001) B cells acquire antigen from target cells after synapse formation. *Nature* **411**, 489–494.
- Monks, C. R., Freiberg, B. A., Kupfer, H., Sciaky, N., Kupfer, A. (1998) Three-dimensional segregation of supramolecular activation clusters in T cells. *Nature* **395**, 82–86.
- Dustin, M. L. (2007) Cell adhesion molecules and actin cytoskeleton at immune synapses and kinapses. *Curr. Opin. Cell Biol.* **19**, 529–533.
- Grakoui, A., Bromley, S. K., Sumen, C., Davis, M. M., Shaw, A. S., Allen, P. M., Dustin, M. L. (1999) The immunological synapse: a molecular machine controlling T cell activation. *Science* **285**, 221–227.
- Weber, M., Treanor, B., Depoil, D., Shinohara, H., Harwood, N. E., Hikida, M., Kurosaki, T., Batista, F. D. (2008) Phospholipase C- γ 2 and Vav cooperate within signaling microclusters to propagate B cell spreading in response to membrane-bound antigen. *J. Exp. Med.* **205**, 853–868.
- Goley, E. D., Welch, M. D. (2006) The ARP2/3 complex: an actin nucleator comes of age. *Nat. Rev. Mol. Cell Biol.* **7**, 713–726.
- Pollard, T. D., Borisy, G. G. (2003) Cellular motility driven by assembly and disassembly of actin filaments. *Cell* **112**, 453–465.
- Billadeau, D. D., Nolz, J. C., Gomez, T. S. (2007) Regulation of T-cell activation by the cytoskeleton. *Nat. Rev. Immunol.* **7**, 131–143.
- Lin, K. B., Freeman, S. A., Zabetian, S., Brugger, H., Weber, M., Lei, V., Dang-Lawson, M., Tse, K. W., Santamaria, R., Batista, F. D., Gold, M. R. (2008) The rap GTPases regulate B cell morphology, immune-synapse formation, and signaling by particulate B cell receptor ligands. *Immunity* **28**, 75–87.
- Freeman, S. A., Lei, V., Dang-Lawson, M., Mizuno, K., Roskelley, C. D., Gold, M. R. (2011) Cofilin-mediated F-actin severing is regulated by the Rap GTPase

- and controls the cytoskeletal dynamics that drive lymphocyte spreading and BCR microcluster formation. *J. Immunol.* **187**, 5887–5900.
13. Bos, J. L. (2005) Linking Rap to cell adhesion. *Curr. Opin. Cell Biol.* **17**, 123–128.
 14. Fu, C., Turck, C. W., Kurosaki, T., Chan, A. C. (1998) BLNK: a central linker protein in B cell activation. *Immunity* **9**, 93–103.
 15. Hashimoto, S., Iwamatsu, A., Ishiai, M., Okawa, K., Yamadori, T., Matsu-shita, M., Baba, Y., Kishimoto, T., Kurosaki, T., Tsukada, S. (1999) Identification of the SH2 domain binding protein of Bruton's tyrosine kinase as BLNK—functional significance of Btk-SH2 domain in B-cell antigen receptor-coupled calcium signaling. *Blood* **94**, 2357–2364.
 16. Scharenberg, A. M., Humphries, L. A., Rawlings, D. J. (2007) Calcium signalling and cell-fate choice in B cells. *Nat. Rev. Immunol.* **7**, 778–789.
 17. Prakriya, M., Lewis, R. S. (2001) Potentiation and inhibition of Ca^{2+} release-activated Ca^{2+} channels by 2-aminoethyl-diphenyl borate (2-APB) occurs independently of IP(3) receptors. *J. Physiol.* **536**, 3–19.
 18. Parekh, A. B., Penner, R. (1997) Store depletion and calcium influx. *Physiol. Rev.* **77**, 901–930.
 19. Feske, S. (2007) Calcium signalling in lymphocyte activation and disease. *Nat. Rev. Immunol.* **7**, 690–702.
 20. Yoneda, M., Nishizaki, T., Tasaka, K., Kurachi, H., Miyake, A., Murata, Y. (2000) Changes in actin network during calcium-induced exocytosis in permeabilized GH3 cells: calcium directly regulates F-actin disassembly. *J. Endocrinol.* **166**, 677–687.
 21. Li, C., Fultz, M. E., Parkash, J., Rhoten, W. B., Wright, G. L. (2001) Ca^{2+} -dependent actin remodeling in the contracting A7r5 cell. *J. Muscle Res. Cell. Motil.* **22**, 521–534.
 22. Rotrosen, D., Gallin, J. I. (1986) Histamine type I receptor occupancy increases endothelial cytosolic calcium, reduces F-actin, and promotes albumin diffusion across cultured endothelial monolayers. *J. Cell Biol.* **103**, 2379–2387.
 23. Yin, H. L., Stossel, T. P. (1979) Control of cytoplasmic actin gel-sol transformation by gelsolin, a calcium-dependent regulatory protein. *Nature* **281**, 583–586.
 24. Witke, W., Hofmann, A., Koppel, B., Schleicher, M., Noegel, A. A. (1993) The Ca^{2+} -binding domains in non-muscle type α -actinin: biochemical and genetic analysis. *J. Cell Biol.* **121**, 599–606.
 25. Herzog, S., Jumaa, H. (2007) The N terminus of the non-T cell activation linker (NTAL) confers inhibitory effects on pre-B cell differentiation. *J. Immunol.* **178**, 2336–2343.
 26. Ketteler, R., Glaser, S., Sandra, O., Martens, U. M., Klingmüller, U. (1993) Enhanced transgene expression in primitive hematopoietic progenitor cells and embryonic stem cells efficiently transduced by optimized retroviral hybrid vectors. *Gene Ther.* **9**, 477–487.
 27. Syverud, K., Chinga, G., Johnsen, P. O., Leirset, I., Wiik, K. (2007) Analysis of lint particles from full-scale printing trials. *Appita J.* **60**, 286–290.
 28. Maders, E. M. M., Verbeek, F. J., Aten, J. A. (1993) Measurement of co-localization of objects in dual-color confocal images. *J. Microscopy* **169**, 375–382.
 29. Majstorovich, S., Zhang, J., Nicholson-Dykstra, S., Linder, S., Friedrich, W., Siminovich, K. A., Higgs, H. N. (2004) Lymphocyte microvilli are dynamic, actin-dependent structures that do not require Wiskott-Aldrich syndrome protein (WASP) for their morphology. *Blood* **104**, 1396–1403.
 30. Treanor, B., Depoil, D., Gonzalez-Granja, A., Barral, P., Weber, M., Dushak, O., Bruckbauer, A., Batista, F. D. (2010) The membrane skeleton controls diffusion dynamics and signaling through the B cell receptor. *Immunity* **32**, 187–199.
 31. Hao, S., August, A. (2005) Actin depolymerization transduces the strength of B-cell receptor stimulation. *Mol. Biol. Cell.* **16**, 2275–2284.
 32. Dedkova, E. N., Sigova, A. A., Zinchenko, V. P. (2000) Mechanism of action of calcium ionophores on intact cells: ionophore-resistant cells. *Membr. Cell Biol.* **13**, 357–368.
 33. Bubb, M. R., Spector, I., Beyer, B. B., Fosen, K. M. (2000) Effects of Jaspaklinolide on the kinetics of actin polymerization. An explanation for certain in vivo observations. *J. Biol. Chem.* **275**, 5163–5170.
 34. Holzinger, A. (2009) Jaspaklinolide: an actin-specific reagent that promotes actin polymerization. *Methods Mol. Biol.* **586**, 71–87.
 35. Oser, M., Condeelis, J. (2009) The cofilin activity cycle in lamellipodia and invadopodia. *J. Cell. Biochem.* **108**, 1252–1262.
 36. Eibert, S. M., Lee, K. H., Pipkorn, R., Sester, U., Wabnitz, G. H., Giese, T., Meuer, S. C., Samstag, Y. (2004) Cofilin peptide homologs interfere with immunological synapse formation and T cell activation. *Proc. Natl. Acad. Sci. USA* **101**, 1957–1962.
 37. Hao, J. J., Wang, G., Pisitkun, T., Patino-Lopez, G., Nagashima, K., Knepper, M. A., Shen, R. F., Shaw, S. (2008) Enrichment of distinct microfilament-associated and GTP-binding-proteins in membrane/microvilli fractions from lymphoid cells. *J. Proteome Res.* **7**, 2911–2927.
 38. Jovecva, E., Larsen, M. R., Waterfield, M. D., Baum, B., Timms, J. F. (2007) Dynamic cofilin phosphorylation in the control of lamellipodial actin homeostasis. *J. Cell Sci.* **120**, 1888–1897.
 39. DesMarais, V., Ghosh, M., Eddy, R., Condeelis, J. (2005) Cofilin takes the lead. *J. Cell Sci.* **118**, 19–26.
 40. Wang, Y., Shibasaki, F., Mizuno, K. (2005) Calcium signal-induced cofilin dephosphorylation is mediated by Slingshot via calcineurin. *J. Biol. Chem.* **280**, 12683–12689.
 41. Klee, C. B., Ren, H., Wang, X. (1998) Regulation of the calmodulin-stimulated protein phosphatase, calcineurin. *J. Biol. Chem.* **273**, 13367–13370.
 42. Ambach, A., Saunus, J., Konstantin, M., Wesselborg, S., Meuer, S. C., Samstag, Y. (2000) The serine phosphatases PP1 and PP2A associate with and activate the actin-binding protein cofilin in human T lymphocytes. *Eur. J. Immunol.* **30**, 3422–3431.
 43. Wonerow, P., Pearce, A. C., Vaux, D. J., Watson, S. P. (2003) A critical role for phospholipase $\text{C}\gamma 2$ in $\alpha\text{IIb}\beta 3$ -mediated platelet spreading. *J. Biol. Chem.* **278**, 37520–37529.
 44. Choi, J. H., Yang, Y. R., Lee, S. K., Kim, I. S., Ha, S. H., Kim, E. K., Bae, Y. S., Ryu, S. H., Suh, P. G. (2007) Phospholipase $\text{C}\gamma 1$ potentiates integrin-dependent cell spreading and migration through Pyk2/paxillin activation. *Cell. Signal.* **19**, 1784–1796.
 45. Furukawa, R., Maselli, A., Thomson, S. A., Lim, R. W., Stokes, J. V., Fechheimer, M. (2003) Calcium regulation of actin crosslinking is important for function of the actin cytoskeleton in Dictyostelium. *J. Cell Sci.* **116**, 187–196.
 46. Glenney Jr., R., Kaulfus, P., Weber, K. (1981) F actin assembly modulated by villin: Ca^{++} -dependent nucleation and capping of the barbed end. *Cell* **24**, 471–480.
 47. Zaffran, Y., Lepidi, H., Benoliel, A. M., Caporaso, C., Bongrand, P. (1993) Role of calcium in the shape control of human granulocytes. *Blood Cells* **19**, 115–129.
 48. Lee, J., Ishihara, A., Oxford, G., Johnson, B., Jacobson, K. (1999) Regulation of cell movement is mediated by stretch-activated calcium channels. *Nature* **400**, 382–386.
 49. Mandeville, J. T., Ghosh, R. N., Maxfield, F. R. (1995) Intracellular calcium levels correlate with speed and persistent forward motion in migrating neutrophils. *Biophys. J.* **68**, 1207–1217.
 50. Huttenlocher, A., Palecek, S. P., Lu, Q., Zhang, W., Mellgren, R. L., Lauffenburger, D. A., Ginsberg, M. H., Horwitz, A. F. (1997) Regulation of cell migration by the calcium-dependent protease calpain. *J. Biol. Chem.* **272**, 32719–32722.
 51. Brundage, R. A., Fogarty, K. E., Tuft, R. A., Fay, F. S. (1993) Chemotaxis of new eosinophils: calcium regulation of chemotactic response. *Am. J. Physiol.* **265**, C1527–C1543.
 52. Brundage, R. A., Fogarty, K. E., Tuft, R. A., Fay, F. S. (1991) Calcium gradients underlying polarization and chemotaxis of eosinophils. *Science* **254**, 703–706.
 53. Carlier, M. F., Renshaw, F., Pantaloni, D. (1999) Control of actin dynamics in cell motility. Role of ADF/cofilin. *J. Biol. Chem.* **274**, 33827–33830.
 54. Mazur, A. J., Gremm, D., Dansranjav, T., Litwin, M., Jockusch, B. M., Wegner, A., Weeds, A. G., Mannherz, H. G. (2010) Modulation of actin filament dynamics by actin-binding proteins residing in lamellipodia. *Eur. J. Cell Biol.* **89**, 402–413.
 55. Bugyi, B., Carlier, M. F. (2010) Control of actin filament treadmilling in cell motility. *Annu. Rev. Biophys.* **39**, 449–470.
 56. Ghosh, M., Song, X., Mouneimne, G., Sidani, M., Lawrence, D. S., Condeelis, J. S. (2004) Cofilin promotes actin polymerization and defines the direction of cell motility. *Science* **304**, 743–746.
 57. Zebda, N., Bernard, O., Bailly, M., Welti, S., Lawrence, D. S., Condeelis, J. S. (2000) Phosphorylation of ADF/cofilin abolishes EGF-induced actin nucleation at the leading edge and subsequent lamellipod extension. *J. Cell Biol.* **151**, 1119–1128.
 58. Condeelis, J. (2001) How is actin polymerization nucleated in vivo? *Trends Biol. Sci.* **11**, 288–293.
 59. Chan, C., Beltzner, C. C., Pollard, T. D. (2009) Cofilin dissociates Arp2/3 complex and branches from actin filaments. *Curr. Biol.* **19**, 537–545.
 60. Kiuchi, T., Ohashi, K., Kurita, S., Mizuno, K. (2007) Cofilin promotes stimulus-induced lamellipodium formation by generating an abundant supply of actin monomers. *J. Cell Biol.* **177**, 465–476.
 61. Rosenblum, M. G., Pikoysky, A. S., Kurths, J. (1996) Phase synchronization of chaotic oscillators. *Phys. Rev. Lett.* **76**, 1804–1807.
 62. Palus, M., Hoyer, D. (1998) Detecting nonlinearity and phase synchronization with surrogate data. *IEEE Eng. Med. Biol. Mag.* **17**, 40–45.
 63. Inglot, T., Ledwina, T. (1996) Asymptotic optimality of data-driven Neyman's tests for uniformity. *Ann. Statist.* **24**, 1982–2019.

KEY WORDS:

B cell spreading · membrane-bound antigens · B cell activation · Ca^{2+} signal · cofilin

B cell receptor-induced Ca²⁺ mobilization mediates F-actin rearrangements and is indispensable for adhesion and spreading of B lymphocytes

Máté Maus, David Medgyesi, Endre Kiss, et al.

J Leukoc Biol 2013 93: 537-547 originally published online January 29, 2013

Access the most recent version at doi:[10.1189/jlb.0312169](https://doi.org/10.1189/jlb.0312169)

Supplemental Material	http://www.jleukbio.org/content/suppl/2013/02/01/jlb.0312169.DC1
References	This article cites 63 articles, 27 of which can be accessed free at: http://www.jleukbio.org/content/93/4/537.full.html#ref-list-1
Subscriptions	Information about subscribing to <i>Journal of Leukocyte Biology</i> is online at http://www.jleukbio.org/site/misc/Librarians_Resource.xhtml
Permissions	Submit copyright permission requests at: http://www.jleukbio.org/site/misc/Librarians_Resource.xhtml
Email Alerts	Receive free email alerts when new an article cites this article - sign up at http://www.jleukbio.org/cgi/alerts
