

Corrigenda for three related articles

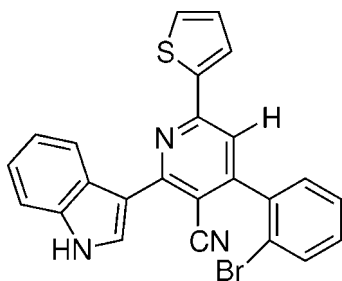
P. L. Nilantha Lakshman

Department of Food Science and Technology, University of Ruhuna, Mapalana, Kamburupitiya 81100, Sri Lanka. *Correspondence e-mail: plakshmannilantha@gmail.com

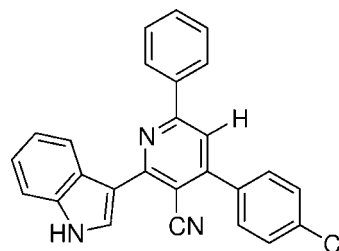
Received 20 February 2015; accepted 20 February 2015

The schemes and chemical names are corrected in three related papers: Vishnupriya, Suresh, Bharkavi *et al.* [*Acta Cryst.* (2014), **E70**, o968–o969], Vishnupriya, Suresh, Gunasekaran *et al.* [*Acta Cryst.* (2014), **E70**, o978], and Vishnupriya, Suresh, Sakthi *et al.* [*Acta Cryst.* (2014), **E70**, o1120–o1121].

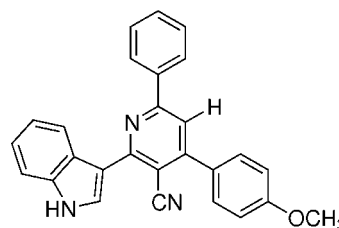
In the paper by Vishnupriya, Suresh, Bharkavi *et al.* (2014), the chemical name in the title should be given as ‘4-(2-bromophenyl)-2-(1*H*-indol-3-yl)-6-(thiophen-2-yl)pyridine-3-carbonitrile’ and the correct scheme is shown below.



In the paper by Vishnupriya, Suresh, Gunasekaran *et al.* (2014), the chemical name in the title should be given as ‘4-(4-chlorophenyl)-2-(1*H*-indol-3-yl)-6-phenylpyridine-3-carbonitrile’ and the correct scheme is shown below.



In the paper by Vishnupriya, Suresh, Sakthi *et al.* (2014), the chemical name in the title should be given as ‘2-(1*H*-indol-3-yl)-4-(4-methoxyphenyl)-6-phenylpyridine-3-carbonitrile’ and the correct scheme is shown below.



References

- Vishnupriya, R., Suresh, J., Bharkavi, S., Perumal, S. & Lakshman, P. L. N. (2014). *Acta Cryst.* **E70**, o968–o969.
Vishnupriya, R., Suresh, J., Gunasekaran, P., Perumal, S. & Lakshman, P. L. N. (2014). *Acta Cryst.* **E70**, o978.
Vishnupriya, R., Suresh, J., Sakthi, M., Perumal, S. & Lakshman, P. L. N. (2014). *Acta Cryst.* **E70**, o1120–o1121.



Crystal structure of 2-(4-chlorophenyl)-4-(1*H*-indol-3-yl)-6-phenylpyridine-3-carbonitrile

R. Vishnupriya,^a J. Suresh,^a Pethaiah Gunasekaran,^b
Subbu Perumal^b and P. L. Nilantha Lakshman^{c*}

^aDepartment of Physics, The Madura College, Madurai 625 011, India, ^bDepartment of Organic Chemistry, School of Chemistry, Madurai Kamaraj University, Madurai 625 021, India, and ^cDepartment of Food Science and Technology, University of Ruhuna, Mapalana, Kamburupitiya 81100, Sri Lanka. *Correspondence e-mail: plakshmannilantha@gmail.com

Received 31 July 2014; accepted 1 August 2014

Edited by W. T. A. Harrison, University of Aberdeen, Scotland

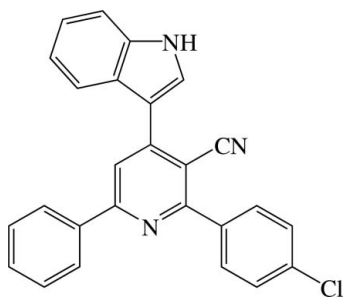
In the title compound, C₂₆H₁₆ClN₃, the dihedral angles between the central pyridine ring and the pendant phenyl, chlorobenzene and indole rings are 18.52 (12), 48.97 (11) and 21.20 (10)°, respectively. An intramolecular C—H...N_C (C = cyanide) hydrogen bond occurs. In the crystal, inversion dimers linked by pairs of N—H...N_C hydrogen bonds generate R₂²(16) loops.

Keywords: crystal structure; pyridine-3-carbonitrile; hydrogen bonding.

CCDC reference: 1017501

1. Related literature

For the biological activity of substituted pyridine derivatives, see: Yao *et al.* (1994). For a related structure, see: Vishnupriya *et al.* (2014).



2. Experimental

2.1. Crystal data

C₂₆H₁₆ClN₃

M_r = 405.87

Monoclinic, *P*2₁/*n*
a = 7.6533 (4) Å
b = 11.4822 (7) Å
c = 23.2906 (14) Å
β = 94.351 (1)°
V = 2040.8 (2) Å³

Z = 4
Mo *Kα* radiation
μ = 0.21 mm^{−1}
T = 293 K
0.50 × 0.25 × 0.20 mm

2.2. Data collection

Bruker Kappa APEXII CCD
diffractometer
Absorption correction: multi-scan
(*SADABS*; Bruker, 2004)
*T*_{min} = 0.958, *T*_{max} = 0.986

15210 measured reflections
4194 independent reflections
3000 reflections with *I* > 2σ(*I*)
*R*_{int} = 0.028

2.3. Refinement

R [*F*² > 2σ(*F*²)] = 0.051
wR (*F*²) = 0.146
S = 1.04
4194 reflections

271 parameters
H-atom parameters constrained
Δρ_{max} = 0.38 e Å^{−3}
Δρ_{min} = −0.40 e Å^{−3}

Table 1

Hydrogen-bond geometry (Å, °).

<i>D</i> —H... <i>A</i>	<i>D</i> —H	H... <i>A</i>	<i>D</i> ... <i>A</i>	<i>D</i> —H... <i>A</i>
C58—H58...N2	0.93	2.58	3.285 (4)	133
N3—H3...N2 ⁱ	0.86	2.20	3.037 (3)	164

Symmetry code: (i) −*x*, −*y*, −*z*.

Data collection: *APEX2* (Bruker, 2004); cell refinement: *SAINT* (Bruker, 2004); data reduction: *SAINT*; program(s) used to solve structure: *SHELXS97* (Sheldrick, 2008); program(s) used to refine structure: *SHELXL97* (Sheldrick, 2008); molecular graphics: *PLATON* (Spek, 2009); software used to prepare material for publication: *SHELXL97*.

Acknowledgements

JS and RV thank the management of the Madura College for their encouragement and support. SP thanks the Department of Science and Technology, New Delhi, for a major research project (SR/S1/OC/-50/2011) and the University Grants Commission, New Delhi, for the award of a BSR Faculty Fellowship

Supporting information for this paper is available from the IUCr electronic archives (Reference: HB7263).

References

- Bruker (2004). *APEX2*, *SAINT* and *SADABS*. Bruker AXS Inc., Madison, Wisconsin, USA.
- Sheldrick, G. M. (2008). *Acta Cryst.* **A64**, 112–122.
- Spek, A. L. (2009). *Acta Cryst.* **D65**, 148–155.
- Vishnupriya, R., Suresh, J., Bharkavi, S., Perumal, S. & Lakshman, P. L. N. (2014). *Acta Cryst.* **E70**, o968–o969.
- Yao, S. K., Ober, J. C., Ferguson, J. J., Maffrand, J. P., Anderson, H. V., Buja, L. M. & Willerson, J. T. (1994). *Am. J. Physiol.* pp. H488–H493.

supporting information

Acta Cryst. (2014). E70, o978 [doi:10.1107/S1600536814017693]

Crystal structure of 2-(4-chlorophenyl)-4-(1*H*-indol-3-yl)-6-phenylpyridine-3-carbonitrile

R. Vishnupriya, J. Suresh, Pethaiah Gunasekaran, Subbu Perumal and P. L. Nilantha Lakshman

S1. Comment

Thienopyridines have been used as antithrombotic agents (Yao *et al.*, 1994) against platelet aggregation. As part of our ongoing studies in this area (Vishnupriya *et al.*, 2014) the title compound was investigated.

The deviation of the nitrile atoms (C41,N2) from the mean plane of the pyridine ring system is 0.0579 (5) and 0.0826 (2) Å. The shortening of the C—N distances [1.340 (3) and 1.348 (3) Å] and the opening of the N1—C4—C5 angle [120.83 (2)°] may be attributed to the size of the substituent at C1, correlating well with the values observed in the *ortho*-substituted derivative. The carbonitrile group lies almost in the plane of the attached planar pyridine ring system.

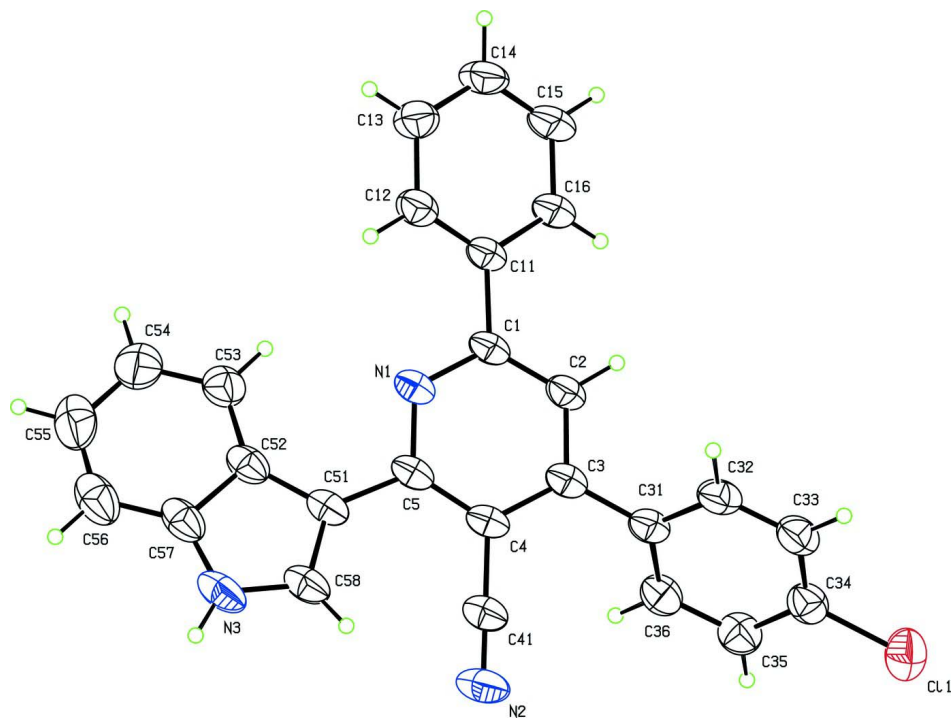
The crystal structure features a N3—H3 \cdots N2⁽ⁱ⁾ [symmetry code: (i) 2 - *x*, 2 - *y*, -*z*] hydrogen bonded *R*₂² (16) motif (Fig. 2). No significant π — π stacking interaction between neighboring aromatic rings or C—H \cdots π interaction towards them are observed.

S2. Experimental

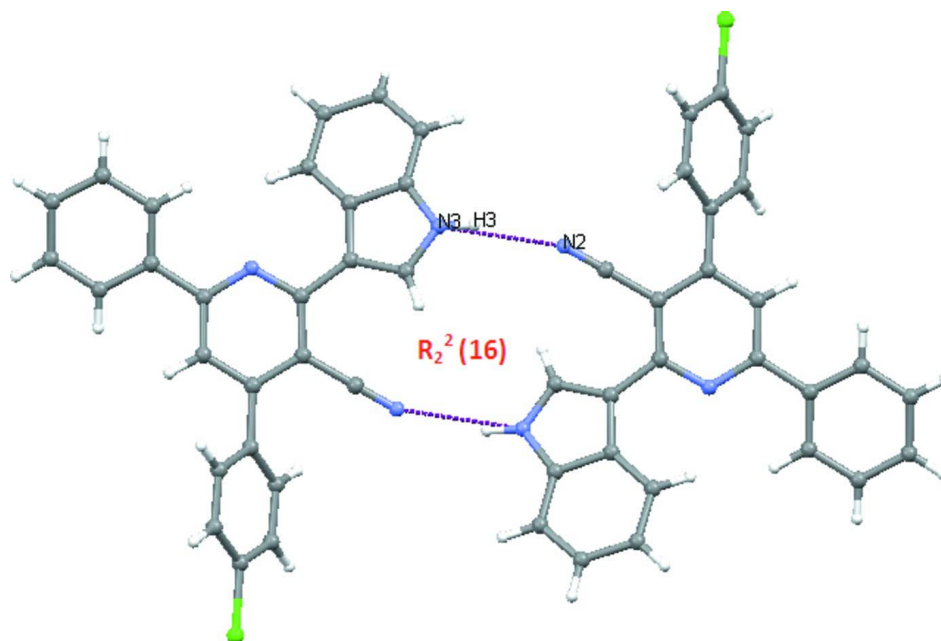
A mixture of 3-(1*H*-indol-3-yl)-3-oxopropanenitrile 1 (1 mmol), 4,4,4-trifluoro-1-phenylbutane-1,3-dione 2 (1 mmol) and 4-chloro benzaldehyde 3 (1 mmol) in the presence of ammonium acetate (400 mmol) under solvent-free condition was heated at 110 °C for 6 h. After completion of the reaction (TLC), the reaction mixture was poured into water and extracted with dichloromethane. After removal of the solvent, the residue was chromatographed over silica gel (230–400 mesh) using petroleum ether-ethyl acetate mixture (7:3 *v/v*), which afforded the pure compound. Melting point: 273 °C, Yield: 70%.

S3. Refinement

H atoms were placed at calculated positions and allowed to ride on their carrier atoms with C—H = 0.93–0.98 Å and with $U_{\text{iso}} = 1.2U_{\text{eq}}(\text{C, N})$ for N, CH₂ and CH atoms and $U_{\text{iso}} = 1.5U_{\text{eq}}(\text{C})$ for CH₃ atoms.

**Figure 1**

The molecular structure of compound showing 30% probability displacement ellipsoids.

**Figure 2**

Partial packing view of the compound showing molecules linked by a pair of N—H...N interactions (dotted lines).

2-(4-Chlorophenyl)-4-(1*H*-indol-3-yl)-6-phenylpyridine-3-carbonitrile*Crystal data*C₂₆H₁₆ClN₃ $M_r = 405.87$ Monoclinic, $P2_1/n$

Hall symbol: -P 2yn

 $a = 7.6533$ (4) Å $b = 11.4822$ (7) Å $c = 23.2906$ (14) Å $\beta = 94.351$ (1)° $V = 2040.8$ (2) Å³ $Z = 4$ $F(000) = 840$ $D_x = 1.321$ Mg m⁻³Mo $K\alpha$ radiation, $\lambda = 0.71073$ Å

Cell parameters from 2000 reflections

 $\theta = 2-27^\circ$ $\mu = 0.21$ mm⁻¹ $T = 293$ K

Block, colourless

 $0.50 \times 0.25 \times 0.20$ mm*Data collection*

Bruker Kappa APEXII CCD

diffractometer

Radiation source: fine-focus sealed tube

Graphite monochromator

Detector resolution: 0 pixels mm⁻¹ ω and ϕ scans

Absorption correction: multi-scan

(SADABS; Bruker, 2004)

 $T_{\min} = 0.958$, $T_{\max} = 0.986$

15210 measured reflections

4194 independent reflections

3000 reflections with $I > 2\sigma(I)$ $R_{\text{int}} = 0.028$ $\theta_{\max} = 26.5^\circ$, $\theta_{\min} = 1.8^\circ$ $h = -9 \rightarrow 9$ $k = -14 \rightarrow 13$ $l = -29 \rightarrow 19$ *Refinement*Refinement on F^2

Least-squares matrix: full

 $R[F^2 > 2\sigma(F^2)] = 0.051$ $wR(F^2) = 0.146$ $S = 1.04$

4194 reflections

271 parameters

0 restraints

Primary atom site location: structure-invariant

direct methods

Secondary atom site location: difference Fourier map

Hydrogen site location: inferred from neighbouring sites

H-atom parameters constrained

 $w = 1/[\sigma^2(F_o^2) + (0.054P)^2 + 0.8601P]$ where $P = (F_o^2 + 2F_c^2)/3$ $(\Delta/\sigma)_{\max} < 0.001$ $\Delta\rho_{\max} = 0.38$ e Å⁻³ $\Delta\rho_{\min} = -0.40$ e Å⁻³*Special details*

Geometry. All e.s.d.'s (except the e.s.d. in the dihedral angle between two l.s. planes) are estimated using the full covariance matrix. The cell e.s.d.'s are taken into account individually in the estimation of e.s.d.'s in distances, angles and torsion angles; correlations between e.s.d.'s in cell parameters are only used when they are defined by crystal symmetry. An approximate (isotropic) treatment of cell e.s.d.'s is used for estimating e.s.d.'s involving l.s. planes.

Refinement. Refinement of F^2 against ALL reflections. The weighted R -factor wR and goodness of fit S are based on F^2 , conventional R -factors R are based on F , with F set to zero for negative F^2 . The threshold expression of $F^2 > \sigma(F^2)$ is used only for calculating R -factors(gt) etc. and is not relevant to the choice of reflections for refinement. R -factors based on F^2 are statistically about twice as large as those based on F , and R -factors based on ALL data will be even larger.

Fractional atomic coordinates and isotropic or equivalent isotropic displacement parameters (Å²)

	x	y	z	$U_{\text{iso}}^*/U_{\text{eq}}$
C1	0.2617 (3)	0.54731 (16)	-0.00655 (10)	0.0574 (5)
C2	0.2444 (3)	0.53305 (18)	-0.06568 (10)	0.0627 (5)
H2	0.2589	0.5966	-0.0896	0.075*
C3	0.2057 (3)	0.42467 (17)	-0.08943 (10)	0.0603 (5)

C4	0.1803 (3)	0.33296 (17)	−0.05109 (10)	0.0605 (5)
C5	0.1900 (3)	0.35418 (17)	0.00869 (10)	0.0598 (5)
C11	0.3096 (3)	0.66136 (17)	0.02012 (10)	0.0580 (5)
C12	0.2778 (3)	0.6854 (2)	0.07626 (11)	0.0704 (6)
H12	0.2292	0.6283	0.0985	0.085*
C13	0.3173 (4)	0.7936 (2)	0.10002 (12)	0.0806 (7)
H13	0.2941	0.8091	0.1379	0.097*
C14	0.3902 (4)	0.8774 (2)	0.06809 (14)	0.0895 (8)
H14	0.4130	0.9510	0.0835	0.107*
C15	0.4297 (5)	0.8525 (2)	0.01292 (14)	0.1014 (10)
H15	0.4846	0.9085	−0.0083	0.122*
C16	0.3893 (4)	0.74587 (19)	−0.01150 (12)	0.0785 (7)
H16	0.4153	0.7305	−0.0491	0.094*
C31	0.1913 (3)	0.41209 (18)	−0.15290 (10)	0.0613 (5)
C32	0.0952 (3)	0.49362 (19)	−0.18691 (11)	0.0721 (6)
H32	0.0370	0.5533	−0.1692	0.087*
C33	0.0853 (3)	0.4870 (2)	−0.24595 (12)	0.0762 (7)
H33	0.0199	0.5413	−0.2680	0.091*
C34	0.1727 (3)	0.3996 (2)	−0.27214 (11)	0.0714 (6)
C35	0.2690 (3)	0.3182 (2)	−0.23988 (12)	0.0763 (7)
H35	0.3275	0.2592	−0.2579	0.092*
C36	0.2779 (3)	0.3248 (2)	−0.18073 (11)	0.0707 (6)
H36	0.3430	0.2698	−0.1590	0.085*
C41	0.1423 (3)	0.21813 (19)	−0.07380 (11)	0.0692 (6)
C51	0.1586 (3)	0.26723 (17)	0.05255 (11)	0.0630 (6)
C52	0.2163 (3)	0.27513 (18)	0.11280 (11)	0.0674 (6)
C53	0.3179 (3)	0.3535 (2)	0.14722 (12)	0.0778 (7)
H53	0.3638	0.4198	0.1311	0.093*
C54	0.3493 (4)	0.3314 (3)	0.20519 (13)	0.0965 (9)
H54	0.4174	0.3830	0.2281	0.116*
C55	0.2800 (5)	0.2320 (3)	0.23029 (15)	0.1080 (11)
H55	0.3005	0.2198	0.2697	0.130*
C56	0.1834 (5)	0.1534 (3)	0.19779 (15)	0.1012 (10)
H56	0.1402	0.0867	0.2144	0.121*
C57	0.1506 (4)	0.1750 (2)	0.13923 (13)	0.0793 (8)
C58	0.0637 (3)	0.16548 (19)	0.04622 (12)	0.0762 (7)
H58	0.0101	0.1382	0.0116	0.091*
N1	0.2322 (2)	0.46053 (14)	0.02994 (8)	0.0597 (4)
N2	0.1113 (3)	0.12741 (17)	−0.09152 (11)	0.0913 (7)
N3	0.0600 (3)	0.11130 (17)	0.09728 (11)	0.0870 (7)
H3	0.0083	0.0462	0.1027	0.104*
Cl1	0.15880 (11)	0.38830 (8)	−0.34663 (3)	0.0995 (3)

Atomic displacement parameters (\AA^2)

	U^{11}	U^{22}	U^{33}	U^{12}	U^{13}	U^{23}
C1	0.0505 (11)	0.0401 (10)	0.0811 (15)	−0.0067 (8)	0.0018 (10)	0.0034 (10)
C2	0.0666 (13)	0.0441 (10)	0.0768 (15)	−0.0091 (9)	0.0018 (11)	0.0061 (10)

C3	0.0532 (11)	0.0453 (10)	0.0819 (15)	−0.0039 (9)	0.0027 (10)	0.0022 (10)
C4	0.0544 (12)	0.0409 (10)	0.0863 (16)	−0.0055 (8)	0.0065 (10)	−0.0016 (10)
C5	0.0513 (11)	0.0407 (10)	0.0880 (16)	−0.0045 (8)	0.0090 (10)	0.0050 (10)
C11	0.0540 (11)	0.0424 (10)	0.0765 (14)	−0.0055 (8)	−0.0023 (10)	0.0028 (10)
C12	0.0736 (15)	0.0545 (12)	0.0825 (16)	−0.0103 (11)	0.0020 (12)	0.0030 (11)
C13	0.0880 (18)	0.0691 (15)	0.0830 (17)	−0.0071 (13)	−0.0048 (13)	−0.0115 (13)
C14	0.107 (2)	0.0522 (13)	0.107 (2)	−0.0207 (13)	−0.0058 (17)	−0.0129 (14)
C15	0.143 (3)	0.0541 (14)	0.108 (2)	−0.0385 (16)	0.016 (2)	−0.0021 (15)
C16	0.1008 (19)	0.0495 (12)	0.0855 (17)	−0.0226 (12)	0.0087 (14)	−0.0010 (11)
C31	0.0568 (12)	0.0474 (11)	0.0789 (15)	−0.0062 (9)	0.0001 (10)	−0.0001 (10)
C32	0.0752 (15)	0.0486 (11)	0.0911 (18)	0.0061 (11)	−0.0034 (13)	−0.0035 (11)
C33	0.0784 (16)	0.0579 (13)	0.0899 (18)	0.0005 (12)	−0.0088 (13)	0.0089 (13)
C34	0.0670 (14)	0.0670 (14)	0.0799 (16)	−0.0088 (11)	0.0040 (12)	0.0073 (12)
C35	0.0735 (15)	0.0711 (15)	0.0862 (18)	0.0094 (12)	0.0172 (13)	0.0007 (13)
C36	0.0646 (14)	0.0624 (13)	0.0848 (17)	0.0105 (11)	0.0036 (12)	0.0076 (12)
C41	0.0672 (14)	0.0488 (12)	0.0929 (17)	−0.0070 (10)	0.0150 (12)	−0.0013 (11)
C51	0.0625 (13)	0.0426 (10)	0.0856 (16)	−0.0006 (9)	0.0168 (11)	0.0055 (10)
C52	0.0669 (14)	0.0478 (11)	0.0909 (17)	0.0106 (10)	0.0283 (12)	0.0071 (11)
C53	0.0870 (17)	0.0637 (14)	0.0839 (17)	0.0159 (13)	0.0157 (13)	0.0010 (13)
C54	0.111 (2)	0.087 (2)	0.092 (2)	0.0328 (17)	0.0149 (17)	−0.0087 (17)
C55	0.136 (3)	0.109 (3)	0.084 (2)	0.050 (2)	0.041 (2)	0.0164 (19)
C56	0.119 (2)	0.0805 (19)	0.111 (2)	0.0301 (18)	0.054 (2)	0.0272 (19)
C57	0.0857 (17)	0.0566 (13)	0.101 (2)	0.0170 (12)	0.0415 (15)	0.0166 (14)
C58	0.0781 (16)	0.0486 (12)	0.1046 (19)	−0.0086 (11)	0.0249 (14)	0.0076 (12)
N1	0.0576 (10)	0.0422 (8)	0.0795 (12)	−0.0059 (7)	0.0059 (8)	0.0044 (8)
N2	0.1034 (17)	0.0503 (11)	0.1236 (19)	−0.0162 (11)	0.0313 (14)	−0.0159 (12)
N3	0.0934 (15)	0.0496 (11)	0.1231 (19)	−0.0065 (10)	0.0430 (14)	0.0156 (12)
Cl1	0.1063 (6)	0.1147 (6)	0.0785 (5)	−0.0048 (4)	0.0132 (4)	0.0148 (4)

Geometric parameters (Å, °)

C1—N1	1.340 (3)	C32—H32	0.9300
C1—C2	1.383 (3)	C33—C34	1.375 (3)
C1—C11	1.483 (3)	C33—H33	0.9300
C2—C3	1.385 (3)	C34—C35	1.377 (3)
C2—H2	0.9300	C34—Cl1	1.735 (3)
C3—C4	1.404 (3)	C35—C36	1.376 (3)
C3—C31	1.481 (3)	C35—H35	0.9300
C4—C5	1.410 (3)	C36—H36	0.9300
C4—C41	1.442 (3)	C41—N2	1.139 (3)
C5—N1	1.348 (3)	C51—C58	1.378 (3)
C5—C51	1.461 (3)	C51—C52	1.441 (3)
C11—C12	1.376 (3)	C52—C53	1.401 (4)
C11—C16	1.387 (3)	C52—C57	1.414 (3)
C12—C13	1.384 (3)	C53—C54	1.377 (4)
C12—H12	0.9300	C53—H53	0.9300
C13—C14	1.361 (4)	C54—C55	1.404 (5)
C13—H13	0.9300	C54—H54	0.9300

C14—C15	1.373 (4)	C55—C56	1.360 (5)
C14—H14	0.9300	C55—H55	0.9300
C15—C16	1.375 (3)	C56—C57	1.390 (4)
C15—H15	0.9300	C56—H56	0.9300
C16—H16	0.9300	C57—N3	1.367 (4)
C31—C36	1.389 (3)	C58—N3	1.344 (3)
C31—C32	1.399 (3)	C58—H58	0.9300
C32—C33	1.374 (3)	N3—H3	0.8600
N1—C1—C2	122.37 (18)	C32—C33—H33	120.2
N1—C1—C11	116.05 (19)	C34—C33—H33	120.2
C2—C1—C11	121.56 (18)	C33—C34—C35	120.8 (2)
C1—C2—C3	120.38 (19)	C33—C34—C11	120.2 (2)
C1—C2—H2	119.8	C35—C34—C11	119.0 (2)
C3—C2—H2	119.8	C36—C35—C34	119.5 (2)
C2—C3—C4	117.1 (2)	C36—C35—H35	120.2
C2—C3—C31	118.94 (19)	C34—C35—H35	120.2
C4—C3—C31	123.95 (19)	C35—C36—C31	121.2 (2)
C3—C4—C5	119.94 (18)	C35—C36—H36	119.4
C3—C4—C41	119.1 (2)	C31—C36—H36	119.4
C5—C4—C41	120.95 (19)	N2—C41—C4	179.6 (3)
N1—C5—C4	120.84 (18)	C58—C51—C52	106.1 (2)
N1—C5—C51	114.2 (2)	C58—C51—C5	128.2 (2)
C4—C5—C51	124.97 (18)	C52—C51—C5	125.68 (19)
C12—C11—C16	118.8 (2)	C53—C52—C57	118.2 (3)
C12—C11—C1	121.25 (19)	C53—C52—C51	135.5 (2)
C16—C11—C1	120.0 (2)	C57—C52—C51	106.3 (2)
C11—C12—C13	120.7 (2)	C54—C53—C52	119.4 (3)
C11—C12—H12	119.7	C54—C53—H53	120.3
C13—C12—H12	119.7	C52—C53—H53	120.3
C14—C13—C12	120.2 (3)	C53—C54—C55	121.0 (3)
C14—C13—H13	119.9	C53—C54—H54	119.5
C12—C13—H13	119.9	C55—C54—H54	119.5
C13—C14—C15	119.5 (2)	C56—C55—C54	120.9 (3)
C13—C14—H14	120.3	C56—C55—H55	119.5
C15—C14—H14	120.3	C54—C55—H55	119.5
C14—C15—C16	121.0 (3)	C55—C56—C57	118.5 (3)
C14—C15—H15	119.5	C55—C56—H56	120.7
C16—C15—H15	119.5	C57—C56—H56	120.7
C15—C16—C11	119.8 (3)	N3—C57—C56	130.5 (3)
C15—C16—H16	120.1	N3—C57—C52	107.6 (2)
C11—C16—H16	120.1	C56—C57—C52	121.9 (3)
C36—C31—C32	117.9 (2)	N3—C58—C51	110.1 (3)
C36—C31—C3	122.3 (2)	N3—C58—H58	124.9
C32—C31—C3	119.7 (2)	C51—C58—H58	124.9
C33—C32—C31	121.1 (2)	C1—N1—C5	119.22 (19)
C33—C32—H32	119.4	C58—N3—C57	109.9 (2)
C31—C32—H32	119.4	C58—N3—H3	125.0

C32—C33—C34	119.5 (2)	C57—N3—H3	125.0
N1—C1—C2—C3	−4.0 (3)	C11—C34—C35—C36	−178.62 (19)
C11—C1—C2—C3	177.71 (19)	C34—C35—C36—C31	0.1 (4)
C1—C2—C3—C4	1.8 (3)	C32—C31—C36—C35	−0.3 (3)
C1—C2—C3—C31	−178.89 (19)	C3—C31—C36—C35	−176.9 (2)
C2—C3—C4—C5	1.7 (3)	C3—C4—C41—N2	−129 (52)
C31—C3—C4—C5	−177.53 (19)	C5—C4—C41—N2	50 (52)
C2—C3—C4—C41	−179.1 (2)	N1—C5—C51—C58	157.8 (2)
C31—C3—C4—C41	1.7 (3)	C4—C5—C51—C58	−22.7 (4)
C3—C4—C5—N1	−3.4 (3)	N1—C5—C51—C52	−19.0 (3)
C41—C4—C5—N1	177.4 (2)	C4—C5—C51—C52	160.4 (2)
C3—C4—C5—C51	177.2 (2)	C58—C51—C52—C53	178.6 (2)
C41—C4—C5—C51	−2.0 (3)	C5—C51—C52—C53	−4.0 (4)
N1—C1—C11—C12	−17.6 (3)	C58—C51—C52—C57	0.1 (2)
C2—C1—C11—C12	160.8 (2)	C5—C51—C52—C57	177.5 (2)
N1—C1—C11—C16	161.9 (2)	C57—C52—C53—C54	−0.5 (3)
C2—C1—C11—C16	−19.7 (3)	C51—C52—C53—C54	−178.9 (2)
C16—C11—C12—C13	2.8 (4)	C52—C53—C54—C55	−0.4 (4)
C1—C11—C12—C13	−177.7 (2)	C53—C54—C55—C56	1.6 (4)
C11—C12—C13—C14	−0.7 (4)	C54—C55—C56—C57	−1.6 (4)
C12—C13—C14—C15	−2.3 (5)	C55—C56—C57—N3	179.5 (3)
C13—C14—C15—C16	3.1 (5)	C55—C56—C57—C52	0.7 (4)
C14—C15—C16—C11	−0.9 (5)	C53—C52—C57—N3	−178.6 (2)
C12—C11—C16—C15	−2.0 (4)	C51—C52—C57—N3	0.2 (2)
C1—C11—C16—C15	178.5 (3)	C53—C52—C57—C56	0.4 (3)
C2—C3—C31—C36	130.6 (2)	C51—C52—C57—C56	179.2 (2)
C4—C3—C31—C36	−50.2 (3)	C52—C51—C58—N3	−0.3 (3)
C2—C3—C31—C32	−46.0 (3)	C5—C51—C58—N3	−177.6 (2)
C4—C3—C31—C32	133.2 (2)	C2—C1—N1—C5	2.4 (3)
C36—C31—C32—C33	0.6 (3)	C11—C1—N1—C5	−179.26 (18)
C3—C31—C32—C33	177.3 (2)	C4—C5—N1—C1	1.3 (3)
C31—C32—C33—C34	−0.7 (4)	C51—C5—N1—C1	−179.23 (18)
C32—C33—C34—C35	0.4 (4)	C51—C58—N3—C57	0.4 (3)
C32—C33—C34—C11	178.91 (19)	C56—C57—N3—C58	−179.3 (3)
C33—C34—C35—C36	−0.1 (4)	C52—C57—N3—C58	−0.4 (3)

Hydrogen-bond geometry (\AA , $^\circ$)

$D\cdots H\cdots A$	$D\cdots H$	$H\cdots A$	$D\cdots A$	$D\cdots H\cdots A$
C58—H58 \cdots N2	0.93	2.58	3.285 (4)	133
N3—H3 \cdots N2 ⁱ	0.86	2.20	3.037 (3)	164

Symmetry code: (i) $-x, -y, -z$.