



## Conference on ‘Changing dietary behaviour: physiology through to practice’ Symposium 3: Novel methods for motivating dietary change

### Personalising nutritional guidance for more effective behaviour change

Carlos Celis-Morales†, Jose Lara† and John C Mathers\*

*Human Nutrition Research Centre, Institute of Cellular Medicine, Newcastle University, Campus for Ageing and Vitality, Newcastle upon Tyne NE4 5PL, UK*

Improving diet and other lifestyle behaviours has considerable potential for reducing the global burden of non-communicable diseases, promoting better health across the life-course and increasing wellbeing. However, realising this potential will require the development, testing and implementation of much more effective behaviour change interventions than are used conventionally. Evidence-based, personalised (or stratified) interventions which incorporate effective behaviour change techniques (BCT) and which are delivered digitally are likely to be an important route to scalable and sustainable interventions. Progress in developing such interventions will depend on the outcomes of research on: (i) the best bases for personalisation of dietary advice; (ii) identification of BCT which are proven to enhance intervention efficacy; (iii) suitable platforms (digital-based tools) for collection of relevant participant characteristics (e.g. socioeconomic information, current diet and lifestyle and dietary preferences) linked with intelligent systems which use those characteristics to offer tailored feedback and advice in a cost-effective and acceptable manner. Future research should focus on such interventions aiming to reduce health inequalities and to improve overall public health.

**Personalised nutrition: Behaviour change: Disease prevention: Phenotype: Genotype**

Health is plastic and results from interactions between individual genotype and exposures plus the play of chance<sup>(1)</sup>. The important exposures include environmental contaminants, smoking and other hazardous lifestyle habits, physical activity (PA) and diet. It has been estimated that up to 80 % of major cardiometabolic diseases and over one-third of cancers could be prevented by eliminating shared risk factors, including tobacco use, poor diet, physical inactivity and excess alcohol<sup>(2)</sup>. A cluster of health behaviours, including non-smoking, being physically active, moderate alcohol intake and consumption of fruit and vegetables, is associated with up to fourfold lower mortality risk, equivalent to 14 years in chronological age<sup>(3,4)</sup>. The risk of most common diseases increases with age as does the burden of disability and frailty. A recent analysis of the global burden of ill-health demonstrated that poor diet and physical inactivity accounted for about three quarters of the top twenty factors contributing to disability-adjusted life years in the UK<sup>(5)</sup>. This emphasises the primacy of changing lifestyle

factors (notably smoking cessation, increasing PA and improving diet) in public health initiatives which are aimed at improving health throughout the life-course and, especially, in adulthood.

Despite considerable research on interventions to increase PA and to improve diet, in most cases the effect size achieved in such interventions is relatively modest, especially in the longer term. For example, our recent systematic review and meta-analysis of PA interventions in middle-age (55–70 years) with objective measures of PA outcomes showed that, at 12 months follow-up, the additional PA was equivalent to just over 2000 steps/d<sup>(6)</sup>. However, with longer-term follow-up, the interventions effects became non-significant<sup>(6)</sup>. A parallel systematic review and meta-analysis of randomised controlled trials (RCT) testing the effectiveness of dietary interventions in changing intakes of fruit and vegetables (F&V), indicators of a healthier eating pattern, at the same life stage was a little more encouraging<sup>(7)</sup>. The meta-analysis of twenty-two studies

**Abbreviations:** BCT, behaviour change technique; F&V, fruit and vegetables; NCD, common non-communicable diseases; PA, physical activity; PN, personalised nutrition; PoP, Proof of Principle; RCT, randomised controlled trial.

\*Corresponding author: Professor J. C. Mathers, fax +44 (0) 191 2081101, email john.mathers@ncl.ac.uk

†These authors contributed equally to this work.

**Table 1.** Evidence from systematic reviews and meta-analyses on the health effects of increased consumption of fruits and vegetables. Modified from Lara *et al.*<sup>(7)</sup>

Reference	No of studies included	Food group evaluated	Change evaluated	Outcome	RR (95 %CI)
Dauchet <i>et al.</i> <sup>(39)</sup>	Seven cohorts	F	Per 106 g increase	Stroke	0.89 (0.85, 0.93)
		F&V			0.95 (0.92, 0.97)
		V			0.97 (0.92, 1.02)
Dauchet <i>et al.</i> <sup>(40)</sup>	Nine cohorts	F&V	Per 106 g increase	CHD	0.96 (0.93, 0.99)
		F			0.93 (0.89, 0.96)
He <i>et al.</i> <sup>(41)</sup>	Eight cohorts	F&V	<3 v. 3–5 servings	Stroke	0.89 (0.83, 0.97)
He <i>et al.</i> <sup>(42)</sup>	Thirteen cohorts	F&V	<3 v. 3–5 servings	CHD	0.93 (0.86, 1.00)
Pavia <i>et al.</i> <sup>(43)</sup>	Sixteen (fifteen case-control, one cohort)	F	Per one portion increase	Oral cancer	0.51 (0.40, 0.65)
		V			0.50 (0.38, 0.65)
Lunet <i>et al.</i> <sup>(44)</sup>	Thirteen cohorts	F	Per 100 g increase	Gastric cancer	0.89 (0.78, 1.02)
		V	Per 100 g increase		0.98 (0.86, 1.13)
Seyedrezazadeh <i>et al.</i> <sup>(45)</sup>	Twenty-three cohorts plus cross-sectional	F	highest v. lowest intake	Asthma	0.84 (0.79, 0.89)
	Eighteen cohorts plus cross-sectional	V	highest v. lowest intake	Asthma	0.88 (0.82, 0.95)
Hu <i>et al.</i> <sup>(46)</sup>	Twenty cohorts	F&V	highest v. lowest intake	Stroke	0.79 (0.75, 0.84)
		F		Stroke	0.77 (0.71, 0.84)
		V		Stroke	0.86 (0.79, 0.93)
Aune <i>et al.</i> <sup>(47)</sup>	Fifteen cohorts	F&V	highest v. lowest intake	Breast cancer	0.89 (0.80, 0.9)
		F			0.92 (0.86, 0.98)
		V			0.99 (0.92, 1.06)
					HR (95 %CI)
Carter <i>et al.</i> <sup>(48)</sup>	Six cohorts	F&V	Per 1.35 servings increase	Diabetes	0.86 (0.77, 0.97)
Cooper <i>et al.</i> <sup>(49)</sup>	Eight cohorts	F&V		Diabetes	0.90 (0.80, 1.01)
		F			0.89 (0.76, 1.04)
		V			0.94 (0.84, 1.05)
Wang <i>et al.</i> <sup>(50)</sup>	Sixteen cohorts	F&V	One serving increase	All-cause mortality	0.95 (0.92, 0.98)
		F			0.94 (0.90, 0.98)
		V			0.95 (0.92, 0.99)

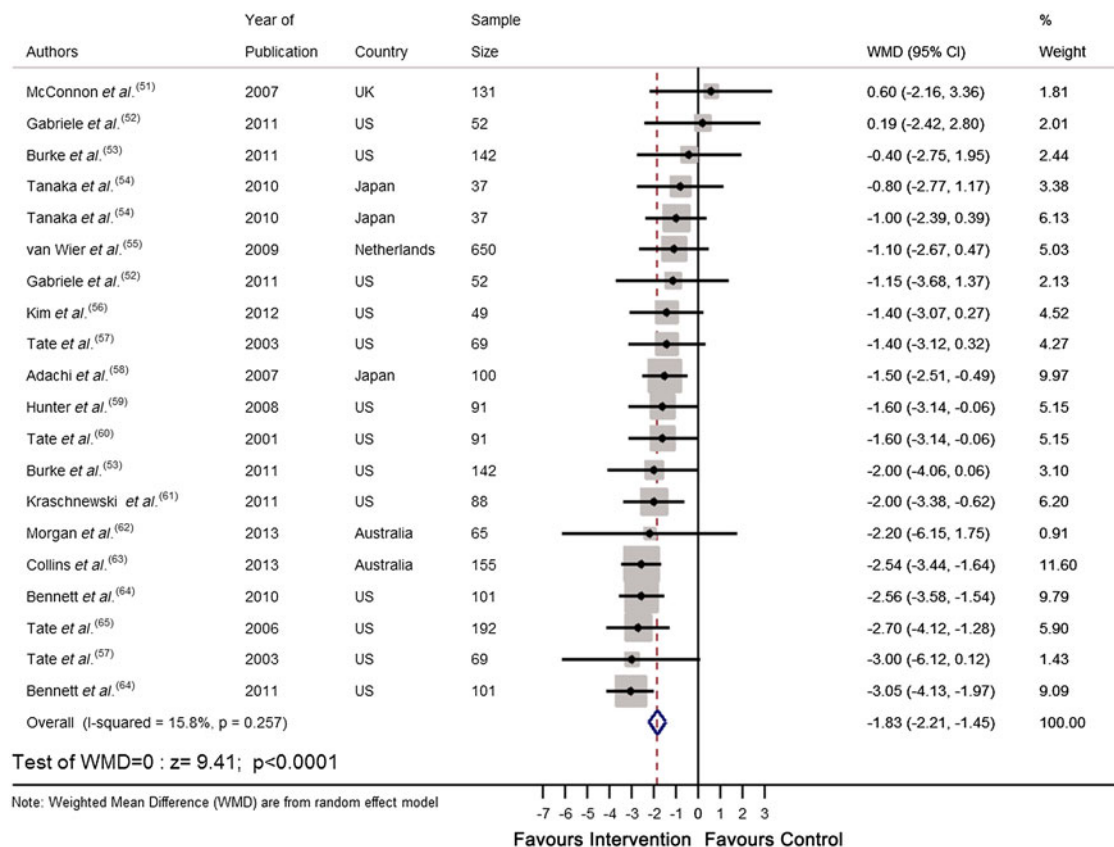
F&V, fruit and vegetables; F, fruit; V, vegetables.

involving 63 189 participants found highly significant ( $P < 0.001$ ) increases in F&V intake which equated to approximately one extra portion F&V/d<sup>(7)</sup>. Importantly, the mean improvement in F&V intake at 4–12 months was similar to that at 13–58 months suggesting that dietary behaviour change was sustainable in these studies<sup>(7)</sup>. Recent systematic reviews suggest important reductions in risk of several common non-communicable diseases (NCD) and age-related diseases associated with increased F&V consumption of the magnitude observed in our meta-analysis<sup>(7)</sup> (Table 1). However, one should be cautious about the potential for bias in such studies since changes in dietary intake were measured by self-report and the well-known biases in dietary reporting may be amplified when assessing responses to interventions<sup>(8)</sup>.

To date, most strategies to reduce the NCD burden have been targeted at populations using ‘one size fits all’ public health recommendations, e.g. ‘eat at least five portions of fruit and vegetables daily’. However, the global burden of NCD worldwide continues to rise and this emphasises the need for more effective prevention strategies. In the present paper, we address three questions: (i) Is personalised

nutritional advice more effective than the conventional ‘one size fits all’ approach?; (ii) What is the optimum basis for personalisation of dietary advice?; (iii) How can such personalised dietary interventions/services be delivered to enough people in cost-effective ways to make a significant improvement in public health?

A personalised (or stratified) approach to provision of dietary advice is predicated on knowledge of key characteristics of those to whom the intervention is being delivered. The more tailored the intervention is the more sophisticated, and potentially expensive, will be the process for acquiring, analysing and acting upon those participant characteristics. With conventional face-to-face interventions, the resource implications of the necessary information collection and processing could mean that such personalised nutrition (PN) interventions would limit their availability and that their use could be restricted to more affluent sections of society. Given that the prevalence of, and risk of death from, NCD are strongly socio-economically patterned<sup>(9)</sup>, it is important that interventions aim to narrow, rather than to exacerbate, health inequalities. In that context, digital-based



**Fig. 1.** (colour online) Forest plot of the effect of e-Health personalised randomised controlled trials on body weight change (kg) in 2414 adults.

technologies for intervention delivery may offer several potential advantages including: (i) Convenience – the intervention could be available to the participant when and where she/he wishes to use it and be equally available on a number of devices, e.g. tablet, laptop or smart phone; (ii) Scalable – the intervention is not restricted to any geographical location and, in theory, could be available to unlimited numbers of participants over wide geographical areas with diverse socioeconomic circumstances; (iii) Personalised/stratified – suitable platforms could collect and process relevant participant characteristics (e.g. socioeconomic information, current diet and lifestyle, and dietary preferences) and use those characteristics to offer tailored feedback and advice; (iv) Sustainable – the platform could employ suitable behaviour change techniques (BCT)<sup>(10)</sup> to maximise the likelihood that participants will maintain changes in eating patterns in the long-term and so maximise gains in health and wellbeing; (v) Reduced costs – while the development of suitable digital platforms may have greater upfront costs than conventionally delivered interventions, digital-based intervention platforms are likely to have lower costs per participant, especially when scaled up to the larger participant numbers for which they are well suited. In addition, maintenance and updating costs may be lower than for equivalent face-to-face systems and so such digital intervention platforms may be economically more sustainable.

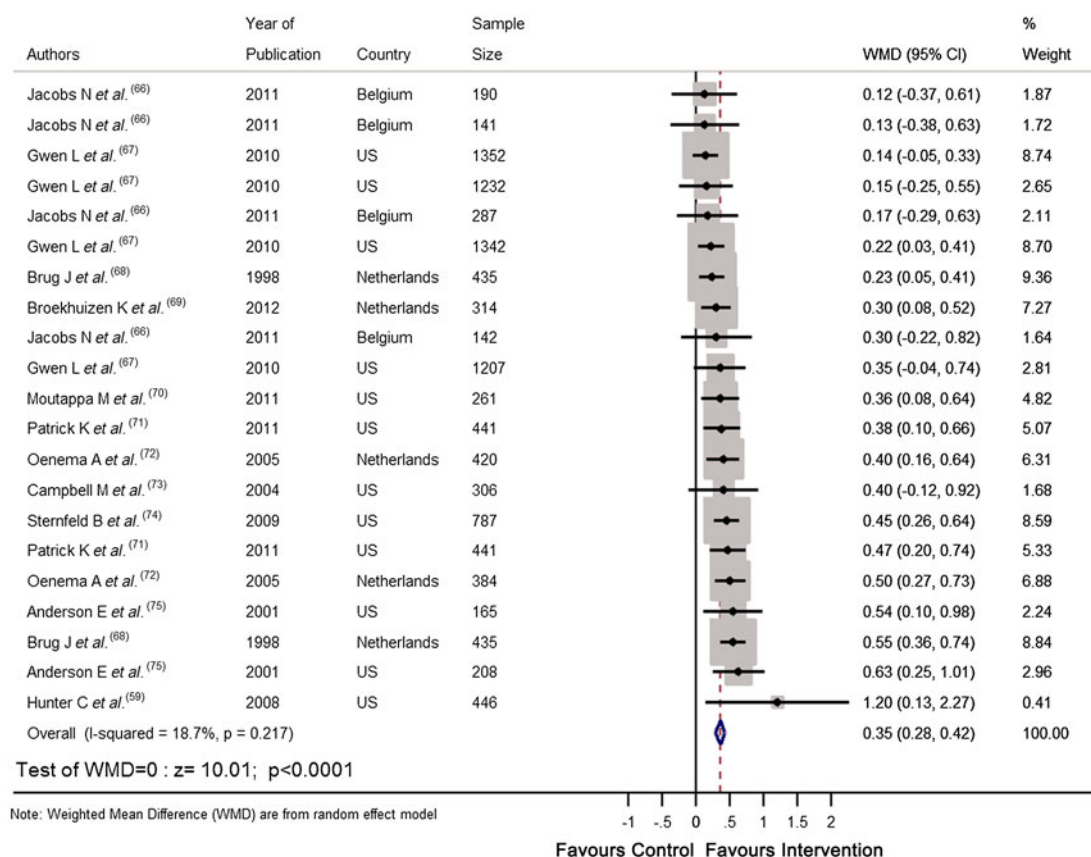
However, is digital technology effective in achieving behaviour change? An earlier systematic review of the effectiveness of e-Learning approaches for improving dietary behaviours found that e-Learning interventions produced only modest improvements in diet<sup>(11)</sup>. For example, e-Learning interventions were associated with 0.24 serving/d increase in intake of F&V and reductions of 0.79 and 0.24 g/d in intakes of total fat and saturated fat respectively; data expressed as weighted mean differences<sup>(11)</sup>. Given these relatively small improvements in diet, it is not surprising that an economic analysis suggested that the use of e-Learning devices would be unlikely to be cost-effective<sup>(11)</sup>. Importantly, the authors of this systematic review noted that the estimates of cost-effectiveness were very sensitive to assumptions about the initial fixed cost of the digital device and that reducing the device costs produced dramatic increases in cost-effectiveness<sup>(11)</sup>. The retail prices of digital devices continue to fall, e.g. the average worldwide cost of a tablet is now less than half the cost in 2010<sup>(12)</sup>. As a consequence, ownership of such devices is expanding rapidly and it is estimated that >70 % of the UK population has a smartphone<sup>(13)</sup>. Although there is considerable digital illiteracy and lack of internet access in some sections of the UK population, the government is committed to improving UK-wide digital inclusion with the intention that by 2020 ‘everyone who can be digitally

capable will be<sup>(14)</sup>. These trends suggest that, within a few years, access to a reasonably priced digital device and training in basic digital skills are unlikely to limit the use of internet-based interventions to improve diet and other lifestyle behaviours.

Recently we completed a systematic review and meta-analysis of RCT that tested the effectiveness of personalised e-Health lifestyle-based interventions on weight loss<sup>(15)</sup> and on dietary and physical activity<sup>(16)</sup>. We found twenty-one articles that met our inclusion criteria and meta-analyses of the results showed that web-based personalised interventions were more effective in reducing body weight<sup>(15)</sup> (weighted mean differences:  $-1.83$  kg 95% CI  $-2.2, -1.4$ ;  $P < 0.0001$ ) and in increasing F&V consumption (weighted mean differences:  $0.35$  servings/d 95% CI  $0.28, 0.42$ ;  $P < 0.0001$ ) than non-personalised advice<sup>(16)</sup> (Figs 1 and 2). In summarising the implications of their findings for research, Harris *et al.*<sup>(11)</sup> called for more 'theoretically informed work, which addresses the question of which characteristics of the target population, target behaviour, content and delivery of the intervention are likely to lead to positive results'. In the examples which follow, we illustrate how theoretically informed work, including the explicit application of BCT<sup>(10)</sup>, can be used in the development of internet-based interventions to improve diet and other lifestyle behaviours through the lifespan.

## Lifestyle-based intervention to enhance healthy ageing: The LiveWell Programme

Nutrition and other lifestyle factors, including smoking behaviour and PA are major determinants of the ageing trajectory<sup>(17,18)</sup>. While intakes of individual foods and nutrients may influence ageing, the strongest evidence for positive effects of diet on ageing in human subjects comes from studies of the Mediterranean diet<sup>(19)</sup>. Observational studies have shown that greater adherence to this dietary pattern is associated with lower mortality risk and lower risk of many age-related NCD including CVD, cancers and neurodegenerative diseases<sup>(20)</sup>. Importantly, results from the European Prospective Investigation into Cancer and Nutrition study indicate that such health benefits can be achieved by adopting these dietary patterns in different latitudes and thus are not exclusive to residents of Mediterranean countries<sup>(21,22)</sup>. In addition, there is accumulating evidence that interventions aiming to shift dietary patterns towards the Mediterranean diet pattern are effective in both primary<sup>(23)</sup> and secondary<sup>(24)</sup> prevention of age-related NCD. The LiveWell Programme, an initiative by our multidisciplinary team based at Newcastle University, aims to develop pragmatic lifestyle-based interventions to enhance healthy ageing (<http://research.ncl.ac.uk/livewell/>). These interventions are targeted at



**Fig. 2.** (colour online) Forest plot of the effect of e-Health personalised randomised controlled trials on change in fruit and vegetable intake (portions/d) in 10 936 adults.



those in the peri-retirement period because life events, such as retirement from full-time work, represent windows of opportunity in which behaviour change interventions may be more effective<sup>(25)</sup>. Initially, these interventions will be delivered via the web for use on laptops and tablets but they have been designed to be potentially deployable on other digital platforms such as smartphones. We built our interventions using: (i) Evidence from systematic reviews of the literature on interventions to improve diet<sup>(7)</sup> and physical activity<sup>(6)</sup> in those aged 55–70 years and evidence that social role interventions may improve health and wellbeing for people in the retirement transition<sup>(26)</sup>; (ii) Suitable behaviour change theories and BCT<sup>(10)</sup>; (iii) A participatory design approach involving workshops with older people.

Then we worked with a web design company to use this information to develop a web-delivered intervention platform which enables older people to make appropriate behaviour changes in the areas of diet (with a focus on the Mediterranean diet as a model of healthy eating), PA and social engagement aimed at enhancing healthy ageing. Advice on these areas is tailored to the needs, preferences and circumstances of individual participants. At present, we are piloting this intervention at locations in the North East of England. In addition, we have developed a panel of measurements aimed at capturing key aspects of the Healthy Ageing Phenotype<sup>(27)</sup> which we are using as outcomes measures to assess the efficacy of the intervention. Very recently, using data from an online survey among older people, we have identified clusters of perceived barriers to healthy eating which may form the basis for an additional tool to tailor dietary interventions for those of peri-retirement age<sup>(28)</sup>.

### Using genetic information for more effective dietary behaviour change

Sequencing of the human genome combined with the recognition that interactions between genotype and diet influence health has opened opportunities for personalisation of dietary advice based upon individual genotype. An early review of the concept concluded that genotype-based PN had potential but that the evidence base was insufficiently developed<sup>(29)</sup>. Recent steep reductions in the cost and time for genomic sequencing and an increasing ability to extract information of interest, e.g. disease risk and ancestry, from sequence data have fuelled interest in personal genetics among the public. For example, a survey of 1588 readers of the journal *Nature* revealed that 18 % had had a genome analysis and 54 % would do so if given the opportunity<sup>(30)</sup>. However, the effectiveness of genetics-based information in facilitating behaviour change is poorly understood. In a systematic review, Marteau *et al.* reported that the evidence was weak because of the small number of studies of limited quality available and concluded that 'claims that receiving DNA-based test results motivates people to change their behaviour are not supported by the evidence'<sup>(31)</sup>.

In a test of the utility of genomic data in motivating behaviour change, 3639 employees of health and technology

companies received subsidised access to a commercial genotyping service, which provided estimates of lifetime risk of common health conditions<sup>(32)</sup>. This showed no evidence that such genomewide profiling produced any measurable change in psychological health, diet or exercise behaviour in the 2037 participants who provided follow-up data at 5·6 (SD 2·4) months<sup>(32)</sup>. However, a Canadian RCT in which young adults were offered genotype-based dietary advice or conventional dietary advice reported that the genotype-based advice was more understandable and more useful than general dietary advice<sup>(33)</sup>. However, whether the genotype-based advice produced significantly greater changes in dietary behaviour is not known. A more recent scientific and ethical analysis of the basis for genetic-based PN showed that there are still divergent views on the robustness of the evidence base<sup>(34)</sup>.

### Internet-delivered personalised nutrition advice: The Food4Me Proof of Principle study

In conclusions from their systematic review, Marteau *et al.* called for larger and better quality RCT investigating the utility of DNA-based information in promoting behaviour change<sup>(31)</sup>. The Food4Me Proof of Principle (PoP) study is a relatively large RCT which was designed to: (i) determine whether it is possible to deliver PN across seven European countries; (ii) ascertain whether PN advice is more effective than general healthy eating guidelines in changing eating patterns; (iii) investigate the utility of the internet as a delivery platform ([www.food4me.org](http://www.food4me.org)). Importantly, the Food4Me PoP Study investigated the basis for personalisation of dietary advice by randomising participants to one of four treatment arms:

- Level 0: Control – conventional (non-personalised) dietary advice;
- Level 1: PN advice based on current diet alone;
- Level 2: PN advice based on current diet plus phenotypic information (adiposity and blood metabolites);
- Level 3: PN advice based on current diet plus phenotypic and genotypic information.

To maximise the integrity of intervention delivery, all aspects of the study were supported by Standardised Operating Procedures, pre-training of all researchers delivering the intervention and frequent internet-based conference calls to share best practice and to resolve issues. In addition, eighteen BCT were embedded in the intervention design to help facilitate appropriate behaviour change. The protocol for the present study has been submitted for publication (C Celis-Morales, K Livingstone, JC Mathers *et al.* unpublished results). Reliable, and quantitative, assessment of dietary intake was an essential feature of the present study and presented some challenges because participants to the Food4Me PoP Study were recruited via the internet and self-recorded, and uploaded, dietary and other information through the Food4Me website. For this purpose, an online FFQ was developed which recorded and quantified (using online standardised colour photographs of portion

**Table 2.** Behaviour change techniques (BCT) associated with intervention effectiveness. Modified from Lara *et al.*<sup>(38)</sup>.

Reference	Outcome	BCT associated with greater effectiveness of interventions	BCT associated with lower effectiveness of interventions
Lara <i>et al.</i> <sup>(38)</sup>	Increasing fruit and vegetables among older adults	'Barrier identification/problem solving' 'Plan for social support/social change' 'Goal setting (outcome)' 'Use of follow-up prompts'	
Olander <i>et al.</i> <sup>(76)</sup>	Increasing PA in obese individuals	'Teach to use prompts/cues' 'Prompt practice' 'Prompt rewards contingent on effort or progress towards behaviour'	
French <i>et al.</i> <sup>(77)</sup>	Increasing PA in obese individuals	None	'Setting behavioural goals' 'Prompting self-monitoring of behaviour' 'Planning for relapses' 'Providing normative information' 'Providing feedback on performance'
Gardner <i>et al.</i> <sup>(78)</sup>	Reduce gestational weight gain	No obvious differences in the behaviour change techniques employed between effective and ineffective interventions	
Hill <i>et al.</i> <sup>(79)</sup>	Reduce gestational weight gain	'Provision of information on the consequences of behaviour to the individual' 'Motivational interviewing' 'Behavioural self-monitoring' 'Providing rewards contingent on successful behaviour'	
Hatmann-Boyce <i>et al.</i> <sup>(80)</sup>	Promoting weight loss in adults	'Provide information about others' approval' 'Provide normative information about others behaviour' 'Model/demonstrate the behaviour' 'Facilitate social comparison'	'Prompting focus on past success' 'Prompt self-talk'
Martin <i>et al.</i> <sup>(81)</sup>	Preventing and managing childhood obesity	'Provide information on the consequences of behaviour to the individual' 'Environmental restructuring' 'Prompt practice' 'Prompt identification as role model/position advocate' 'Stress management/emotional control training' 'General communication skills training'	

PA, physical activity.

sizes) consumption of 157 food items<sup>(35)</sup>. This online FFQ was validated against a 4-d-weighted food record in 100 participants<sup>(36)</sup>. Potential participants for the study consented to join the study after registering through the website. Analysis of data from 5571 screeners showed that those interested in PN delivered via the internet broadly representative of the wider European adult population, most of whom would benefit from improved diet and/or greater PA<sup>(37)</sup>. Of the 1607 participants randomised to the Food4Me PoP Study RCT, 1285 completed 6 months follow up and the primary outcome data are being analysed at present.

### What is the best basis for personalisation of dietary advice?

Both example studies outlined earlier, the LiveWell Programme and the Food4Me PoP Study, made explicit use of BCT in designing and delivering web-based interventions but they used different approaches to personalisation of dietary advice. The dietary intervention developed within LiveWell Programme aims to shift current eating patterns towards that of the Mediterranean diet and personalisation is based on individual preferences for foods and meals. Having expressed particular preferences, participants are offered advice and support

although features such as recipes, meal planning and tips for choosing healthier snacks. In the Food4Me PoP Study, an individual participant's diet was assessed at baseline and then advice was offered targeting the top three nutrients which diverged most from currently recommended healthy intakes. Well-designed, theory- and evidence-based interventions, in particular those which deploy recognised BCT, are expected to be more effective than interventions which do not employ such features. However, the efficacy of particular BCT in improving diet among any section of the population is poorly understood. We have undertaken further analysis of data from RCT testing the effectiveness of dietary interventions in changing intakes of F&V (reported by Lara *et al.*<sup>(7)</sup>) to identify the BCT used in complex dietary behaviour change interventions and to explore associations between BCT utilised and intervention effectiveness. We have found that studies using the techniques 'barrier identification/problem solving', 'plan social support/social change', 'goal setting (outcome)', 'use of follow-up prompts' and 'provide feedback on performance'<sup>(10)</sup> were associated with greater effects of interventions on F&V consumption compared with studies not using these BCT<sup>(38)</sup>. Outcomes from recent systematic reviews identifying BCT which improve the effectiveness of lifestyle-based interventions targeting diet, PA and weight loss are summarised in Table 2.

## Conclusions

Improving diet and other lifestyle behaviours has considerable potential for reducing the global burden of NCD, promoting better health across the life-course and increasing wellbeing. However, realising this potential will require the development, testing and implementation of much more effective behaviour change interventions than are used conventionally. Evidence-based, personalised interventions which incorporate effective BCT and which are delivered digitally are likely to be an important route to scalable and sustainable interventions. Future research should focus on such interventions aiming to reduce health inequalities and to improve overall public health.

## Financial Support

J. L. and J. C. M. acknowledge support from the LiveWell Programme which is funded through a collaborative grant from the Lifelong Health and Wellbeing initiative, managed by the Medical Research Council on behalf of the funders: Biotechnology and Biological Sciences Research Council, Engineering and Physical Sciences Research Council, Economic and Social Research Council, Medical Research Council, Chief Scientist Office of the Scottish Government Health Directorates, National Institute for Health Research/The Department of Health, The Health and Social Care Research & Development of the Public Health Agency (Northern Ireland) and Wales Office of Research and Development for Health and Social Care and the Welsh Assembly Government (grant number G0900686). C. C. M. and J. C. M. acknowledge support from the Food4Me Study which is funded by the European Commission under the Food, Agriculture, Fisheries and Biotechnology Theme of the Seventh Framework Programme for Research and Technological Development (grant number 265494).

## Conflicts of Interest

None.

## Authorship

J. C. M., C. C. M. and J. L. drafted this manuscript based on the lecture given by J. C. M. at the Irish Section of the Nutrition Society Meeting 'Changing dietary behaviour: from physiology through to practice'. University of Ulster, Coleraine, June 2014. All authors approved the final manuscript.

## References

- Mathers JC (2002) Pulses and carcinogenesis: potential for the prevention of colon, breast and other cancers. *Br J Nutr.* **88**, Suppl 3, S273–S279.
- World Health Organization & van Lerberghe W (2008) *The World Health Report 2008: Primary Health Care: Now More Than Ever*. Geneva, Switzerland: World Health Organization.
- Khaw KT, Wareham N, Bingham S *et al.* (2008) Combined impact of health behaviours and mortality in men and women: the EPIC-Norfolk prospective population study. *PLoS Med* **5**, e12.
- van Dam RM, Li T, Spiegelman D *et al.* (2008) Combined impact of lifestyle factors on mortality: prospective cohort study in US women. *BMJ* **337**, a1440.
- Murray CJL, Richards MA, Newton JN *et al.* (2013) UK health performance: findings of the Global Burden of Disease Study 2010. *Lancet* **381**, 997–1020.
- Hobbs N, Godfrey A, Lara J *et al.* (2013) Are behavioral interventions effective in increasing physical activity at 12 to 36 months in adults aged 55 to 70 years? A systematic review and meta-analysis. *BMC Med* **11**, 75.
- Lara J, Hobbs N, Moynihan PJ *et al.* (2014) Effectiveness of dietary interventions among adults of retirement age: a systematic review and meta-analysis of randomized controlled trials. *BMC Med* **12**, 60.
- Adamson AJ & Mathers JC (2004) Effecting dietary change. *Proc Nutr Soc* **63**, 537–547.
- Di Cesare M, Khang Y-H, Asaria P *et al.* (2013) Inequalities in non-communicable diseases and effective responses. *Lancet* **381**, 585–597.
- Michie S, Ashford S, Snihotta FF *et al.* (2011) A refined taxonomy of behaviour change techniques to help people change their physical activity and healthy eating behaviours: The CALO-RE taxonomy. *Psychol Health* **26**, 1479–1498.
- Harris J, Felix L, Miners A *et al.* (2011) Adaptive e-learning to improve dietary behaviour: a systematic review and cost-effectiveness analysis. *Health Technol Assess* **15**, 1–160.
- Mobilemag (2011) Tablet market to explode to \$46 Billion worldwide by 2014. <http://www.mobilemag.com/2011/01/05/tablet-market-to-explode-to-46-billion-worldwide-by-2014/#sthash.kk9GRvDh.dpuf> [accessed 19 August 2014]
- Mobilemarketingmagazine (2013) 7 in 10 People in the UK now own a smartphone. Available at <http://mobilemarketingmagazine.com/7-10-people-uk-now-own-smartphone/#g9aX3adUL2UCo0vm.99> [accessed 19 August 2014]
- Charter UDI (2014) <https://www.gov.uk/government/publications/government-digital-inclusion-strategy/uk-digital-inclusion-charter> [accessed 19 August 2014]
- Celis-Morales C, Livingstone KM, Abraham S *et al.* (2014) Do tailored e-health interventions achieve weight loss and reduce central obesity: a meta-analysis *NuGOweek 2014 'Nutrigenomics of Foods'*. Castellammare di Stabia, Napoli, Italy.
- Celis-Morales C, Abraham S, Keenan P *et al.* (2014) Effect of web-based tailored lifestyle interventions on fruit and vegetable consumption: a systematic review and meta-analysis of randomised controlled trials. In *The Nutrition Society Annual Summer Meeting Carbohydrates in Health: Friends or Foes?* UK: University of Glasgow.
- Stanner S, Thompson RD & Buttriss J (2009) *Healthy Ageing: the Role of Nutrition and Lifestyle: the Report of a British Nutrition Foundation Task Force*. Oxford: Wiley-Blackwell.





18. Langie SAS, Lara J & Mathers JC (2012) Early determinants of the ageing trajectory. *Best Pract Res Clin Endocrinol Metab* **26**, 613–626.
19. Trichopoulou A, Martinez-Gonzalez MA, Tong TY *et al.* (2014) Definitions and potential health benefits of the Mediterranean diet: views from experts around the world. *BMC Med* **12**, 112.
20. Sofi F, Abbate R, Gensini GF *et al.* (2010) Accruing evidence on benefits of adherence to the Mediterranean diet on health: an updated systematic review and meta-analysis. *Am J Clin Nutr* **92**, 1189–1196.
21. Trichopoulou A, Orfanos P, Norat T *et al.* (2005) Modified Mediterranean diet and survival: EPIC-elderly prospective cohort study. *BMJ* **330**, 991.
22. Couto E, Boffetta P, Lagiou P *et al.* (2011) Mediterranean dietary pattern and cancer risk in the EPIC cohort. *Br J Cancer* **104**, 1493–1499.
23. Estruch R, Ros E, Salas-Salvado J *et al.* (2013) Primary prevention of cardiovascular disease with a Mediterranean diet. *N Engl J Med* **368**, 1279–1290.
24. de Lorgeril M, Salen P, Martin JL *et al.* (1999) Mediterranean diet, traditional risk factors, and the rate of cardiovascular complications after myocardial infarction: final report of the Lyon Diet Heart Study. *Circulation* **99**, 779–785.
25. Schäfer M, Jaeger-Erben M & Bamberg S (2012) Life events as windows of opportunity for changing towards sustainable consumption patterns? *J Consum Policy* **35**, 65–84.
26. Heaven BEN, Brown LJE, White M *et al.* (2013) Supporting well-being in retirement through meaningful social roles: systematic review of intervention studies. *Milbank Q* **91**, 222–287.
27. Lara J, Godfrey A, Evans E *et al.* (2013) Towards measurement of the Healthy Ageing Phenotype in lifestyle-based intervention studies. *Maturitas* **76**, 189–199.
28. Lara J, McCrum L-A & Mathers JC (2014) Association of Mediterranean diet and other health behaviours with barriers to healthy eating and perceived health among British adults of retirement age. *Maturitas*, (in press).
29. Joost H-G, Gibney MJ, Cashman KD *et al.* (2007) Personalised nutrition: status and perspectives. *Br J Nutr* **98**, 26–31.
30. Maher B (2011) Nature readers flirt with personal genomics. *Nature* **478**, 19.
31. Marteau TM, French DP, Griffin SJ *et al.* (2010) Effects of communicating DNA-based disease risk estimates on risk-reducing behaviours. *Cochrane Database Syst Rev*, CD007275.
32. Bloss CS, Schork NJ & Topol EJ (2011) Effect of direct-to-consumer genomewide profiling to assess disease risk. *N Engl J Med* **364**, 524–534.
33. Nielsen D & El-Sohemy A (2012) A randomized trial of genetic information for personalized nutrition. *Genes Nutr* **7**, 559–566.
34. Görman U, Mathers J, Grimaldi K *et al.* (2013) Do we know enough? A scientific and ethical analysis of the basis for genetic-based personalized nutrition. *Genes Nutr* **8**, 373–381.
35. Forster H, Fallaize R, Gallagher C *et al.* (2014) Online dietary intake estimation: the Food4Me food frequency questionnaire. *J Med Internet Res* **16**, e150.
36. Fallaize R, Forster H, Macready AL *et al.* (2014) Online dietary intake estimation: reproducibility and validity of the Food4Me food frequency questionnaire against a 4-day weighed food record. *J Med Internet Res* **16**, e190.
37. Celis-Morales C, Livingstone KM, Marsaux C *et al.* (2014) Baseline characteristics of the Food4Me Proof of Principle Study: a web-based randomised controlled trial of personalised nutrition in seven European countries. In *The Nutrition Society Annual Summer Meeting Carbohydrates in Health: Friends or Foes?*. UK: University of Glasgow.
38. Lara J, Evans E, Hobbs N *et al.* (2014) Association of behaviour change techniques with effectiveness of dietary interventions among adults of retirement age: a systematic review and meta-analysis of randomised controlled trials. *BMC Med* **12**, 177.
39. Dauchet L, Amouyel P & Dallongeville J (2005) Fruit and vegetable consumption and risk of stroke: a meta-analysis of cohort studies. *Neurology* **65**, 1193–1197.
40. Dauchet L, Amouyel P, Hercberg S *et al.* (2006) Fruit and vegetable consumption and risk of coronary heart disease: a meta-analysis of cohort studies. *J Nutr* **136**, 2588–2593.
41. He FJ, Nowson CA & MacGregor GA (2006) Fruit and vegetable consumption and stroke: meta-analysis of cohort studies. *Lancet* **367**, 320–326.
42. He FJ, Nowson CA, Lucas M *et al.* (2007) Increased consumption of fruit and vegetables is related to a reduced risk of coronary heart disease: meta-analysis of cohort studies. *J Hum Hypertens* **21**, 717–728.
43. Pavia M, Pileggi C, Nobile CGA *et al.* (2006) Association between fruit and vegetable consumption and oral cancer: a meta-analysis of observational studies. *Am J Clin Nutr* **83**, 1126–1134.
44. Lunet N, Lacerda-Vieira A & Barros H (2005) Fruit and vegetables consumption and gastric cancer: a systematic review and meta-analysis of cohort studies. *Nutr Cancer* **53**, 1–10.
45. Seyedrezazadeh E, Moghaddam MP, Ansarin K *et al.* (2014) Fruit and vegetable intake and risk of wheezing and asthma: a systematic review and meta-analysis. *Nutr Rev* **72**, 411–428.
46. Hu D, Huang J, Wang Y *et al.* (2014) Fruits and vegetables consumption and risk of stroke: a meta-analysis of prospective cohort studies. *Stroke, J Cerebr Circ* **45**, 1613–1619.
47. Aune D, Chan DS, Vieira AR *et al.* (2012) Fruits, vegetables and breast cancer risk: a systematic review and meta-analysis of prospective studies. *Breast Cancer Res Treat* **134**, 479–493.
48. Carter P, Gray LJ, Troughton J *et al.* (2010) Fruit and vegetable intake and incidence of type 2 diabetes mellitus: systematic review and meta-analysis. *BMJ* **341**, c4229.
49. Cooper AJ, Forouhi NG, Ye Z *et al.* (2012) Fruit and vegetable intake and type 2 diabetes: EPIC-InterAct prospective study and meta-analysis. *Eur J Clin Nutr* **66**, 1082–1092.
50. Wang X, Ouyang Y, Liu J *et al.* (2014) Fruit and vegetable consumption and mortality from all causes, cardiovascular disease, and cancer: systematic review and dose-response meta-analysis of prospective cohort studies. *BMJ* **349**, g4490.
51. McConnon A, Kirk SFL, Cockcroft JE *et al.* (2007) The Internet for weight control in an obese sample: results of a randomised controlled trial. *BMC Health Services Research* **7**.
52. Gabriele JM, Carpenter BD, Tate DF *et al.* (2011) Directive and nondirective E-coach support for weight loss in overweight adults. *Ann Behav Med* **41**, 252–263.
53. Burke LE, Conroy MB, Sereika SM *et al.* (2011) The effect of electronic self-monitoring on weight loss and dietary intake: a randomized behavioral weightloss trial. *Obesity* **19**, 338–344.



54. Tanaka M, Adachi Y, Adachi K *et al.* (2010) Effects of a non-face-to-face behavioral weight-control program among Japanese overweight males: a randomized controlled trial. *Int J Behav Med* **17**, 17–24.
55. van Wier MF, Ariens GAM, Dekkers JC *et al.* (2009) Phone and e-mail counselling are effective for weight management in an overweight working population: a randomized controlled trial. *BMC Public Health* **9**.
56. Kim C, Draska M, Hess ML *et al.* (2012) A web-based pedometer programme in women with a recent history of gestational diabetes. *Diabetic Med* **29**, 278–283.
57. Tate DF, Jackvony EH & Wing RR (2003) Effects of Internet behavioral counseling on weight loss in adults at risk for type 2 diabetes - A randomized trial. *J Am Med Assoc* **289**, 1833–1836.
58. Adachi Y, Sato C, Yamatsu K *et al.* (2007) A randomized controlled trial on the long-term effects of a 1-month behavioral weight control program assisted by computer tailored advice. *Behav Res and Ther* **45**, 459–470.
59. Hunter CM, Peterson AL, Alvarez LM *et al.* (2008) Weight management using the Internet - A randomized controlled trial. *Am J Prev Med* **34**, 119–126.
60. Tate DF, Wing RR & Winett RA (2001) Using Internet technology to deliver a behavioral weight loss program. *J Am Med Assoc* **285**, 1172–1177.
61. Kraschnewski JL, Stuckey HL, Rovniak LS *et al.* (2011) Efficacy of a weight-loss website based on positive deviance. A randomized trial. *Am J Preve Med* **41**, 610–614.
62. Morgan PJ, Callister R, Collins CE *et al.* (2013) The SHED-IT community trial: a randomized controlled trial of internet- and paper-based weight loss programs tailored for overweight and obese men. *Ann Behav Med* **45**, 139–152.
63. Collins CE, Morgan PJ, Jones P *et al.* (2012) A 12-week commercial web-based weight-loss program for overweight and obese adults: randomized controlled trial comparing basic versus enhanced features. *J Med Internet Res* **14**.
64. Bennett GG, Herring SJ, Puleo E *et al.* (2010) Web-based weight loss in primary care: a randomized controlled trial. *Obesity* **18**, 308–313.
65. Tate DF, Jackvony EH & Wing RR (2006) A randomized trial comparing human e-mail counseling, computer-automated tailored counseling, and no counseling in an Internet weight loss program. *Arch Intern Med* **166**, 1620–1625.
66. Jacobs N, Clays E, De Bacquer D *et al.* (2011) Effect of a tailored behavior change program on a composite lifestyle change score: a randomized controlled trial. *Health Educ Res* **26**, 886–895.
67. Alexander GL, McClure JB, Calvi JH *et al.* (2010) A randomized clinical trial evaluating online interventions to improve fruit and vegetable consumption. *Am J Public Health* **100**, 319–326.
68. Brug J, Glanz K, Van Assema P *et al.* (1998) The impact of computer-tailored feedback and iterative feedback on fat, fruit, and vegetable intake. *Health Educ Behav* **25**, 517–531.
69. Broekhuizen K, van Poppel MNM, Koppes LL *et al.* (2012) Can multiple lifestyle behaviours be improved in people with familial hypercholesterolemia? Results of a parallel randomised controlled trial. *Plos One* **7**.
70. Mouttapa M, Robertson TP, McEligot AJ *et al.* (2011) The Personal Nutrition Planner: A 5-week, computer-tailored intervention for women. *J Nutr Educ Behav* **43**, 165–172.
71. Patrick K, Calfas KJ, Norman GJ *et al.* (2011) Outcomes of a 12-month web-based intervention for overweight and obese men. *Ann Behav Med* **42**, 391–401.
72. Oenema A, Tan F & Brug J (2005) Short-term efficacy of a web-based computer-tailored nutrition intervention: main effects and mediators. *Ann Behavi Med* **29**, 54–63.
73. Campbell MK, Carbone E, Honess-Morreale L *et al.* (2004) Randomized trial of a tailored nutrition education CD-ROM program for women receiving food assistance. *J Nutr Educ and Behav* **36**, 58–66.
74. Sternfeld B, Block C, Quesenberry CP Jr. *et al.* (2009) Improving diet and physical activity with ALIVE a work-site randomized trial. *Am J Prev Med* **36**, 475–483.
75. Anderson ES, Winett RA, Wojcik JR *et al.* (2001) A computerized social cognitive intervention for nutrition behavior: direct and mediated effects on fat, fiber, fruits, and vegetables, self-efficacy, and outcome expectations among food shoppers. *Ann Behav Med* **23**, 88–100.
76. Olander EK, Fletcher H, Williams S *et al.* (2013) What are the most effective techniques in changing obese individuals' physical activity self-efficacy and behaviour: a systematic review and meta-analysis. *Int J Behav Nutr Phys Act* **10**, 29.
77. French D, Olander E, Chisholm A *et al.* (2014) Which behaviour change techniques are most effective at increasing older adults' self-efficacy and physical activity behaviour? A Systematic Review. *Ann Behav Med* **20**, 1–10.
78. Gardner B, Wardle J, Poston L *et al.* (2011) Changing diet and physical activity to reduce gestational weight gain: a meta-analysis. *Obes Rev* **12**, e602–ee20.
79. Hill B, Skouteris H & Fuller-Tyszkiewicz M (2013) Interventions designed to limit gestational weight gain: a systematic review of theory and meta-analysis of intervention components. *Obes Rev* **14**, 435–450.
80. Hartmann-Boyce J, Johns DJ, Jebb SA *et al.* (2014) Effect of behavioural techniques and delivery mode on effectiveness of weight management: systematic review, meta-analysis and meta-regression. *Obes Rev* **15**, 598–609.
81. Martin J, Chater A, Lorencatto F (2013) Effective behaviour change techniques in the prevention and management of childhood obesity. *Int J Obes* **37**, 1287–1294.