

Selection Signatures Underlying Dramatic Male Inflorescence Transformation During Modern Hybrid Maize Breeding

Joseph L. Gage,* Michael R. White,* Jode W. Edwards,[†] Shawn Kaeppler,** and Natalia de Leon*,¹

*Department of Agronomy, University of Wisconsin – Madison, Wisconsin 53706, [†]United States Department of Agriculture - Agricultural Research Service Corn Insects and Crop Genetics Research Unit, Iowa State University, Ames, Iowa 50011, and

^{**}Wisconsin Crop Innovation Center, University of Wisconsin – Madison, Middleton, Wisconsin 53562

ORCID IDs: 0000-0001-5946-4414 (J.L.G.); 0000-0001-7867-9058 (N.d.L.)

ABSTRACT Inflorescence capacity plays a crucial role in reproductive fitness in plants, and in production of hybrid crops. Maize is a monoecious species bearing separate male and female flowers (tassel and ear, respectively). The switch from open-pollinated populations of maize to hybrid-based breeding schemes in the early 20th century was accompanied by a dramatic reduction in tassel size, and the trend has continued with modern breeding over the recent decades. The goal of this study was to identify selection signatures in genes that may underlie this dramatic transformation. Using a population of 942 diverse inbred maize accessions and a nested association mapping population comprising three 200-line biparental populations, we measured 15 tassel morphological characteristics by manual and image-based methods. Genome-wide association studies identified 242 single nucleotide polymorphisms significantly associated with measured traits. We compared 41 unselected lines from the Iowa Stiff Stalk Synthetic (BSSS) population to 21 highly selected lines developed by modern commercial breeding programs, and found that tassel size and weight were reduced significantly. We assayed genetic differences between the two groups using three selection statistics: cross population extended haplotype homogeneity, cross-population composite likelihood ratio, and fixation index. All three statistics show evidence of selection at genomic regions associated with tassel morphology relative to genome-wide null distributions. These results support the tremendous effect, both phenotypic and genotypic, that selection has had on maize male inflorescence morphology.

KEYWORDS maize; inflorescence; tassel; selection; GWAS

THE male inflorescence, or tassel, of maize (*Zea mays* L.) is a branched structure that displays remarkable morphological diversity. Tassels vary in length, number of branches, compactness, and curvature, all of which are capable of affecting the quantity and dispersal of pollen. Inflorescence architecture is crucial to reproduction in wind pollinated plants (Friedman and Barrett 2009) such as maize. As such,

tassel size and shape are likely to have been subject to both natural and artificial selection. Tassels on teosinte plants, the wild progenitor of maize, are characterized by a large number (>50) of branches (Xu *et al.* 2017), implying a reproductive advantage of numerous branches in natural populations. In cultivated maize, however, tassel size and branch number have decreased over the course of modern breeding (Meghji *et al.* 1984; Duvick 1997, 2005). Tassel size is negatively correlated with grain yield, putatively due to shading caused by large tassels (Duncan *et al.* 1967; Hunter *et al.* 1969). At high planting densities typical of modern agronomic practices, tassels can intercept enough sunlight to reduce photosynthesis lower in the canopy, which can negatively affect assimilation of photosynthate in the ear (Duncan *et al.* 1967; Wardlaw 1990; Hammer *et al.* 2009). A study in tropical maize indicated that direct selection on branch number can result in an indirect increase in grain yield (Fischer *et al.* 1987), showing that the relationship

Copyright © 2018 J. L. Gage *et al.*

doi: <https://doi.org/10.1534/genetics.118.301487>

Manuscript received August 8, 2018; accepted for publication September 14, 2018; published Early Online September 25, 2018.

Available freely online through the author-supported open access option.

This is an open-access article distributed under the terms of the Creative Commons Attribution 4.0 International License (<http://creativecommons.org/licenses/by/4.0/>), which permits unrestricted use, distribution, and reproduction in any medium, provided the original work is properly cited.

Supplemental material available at Figshare: <https://doi.org/10.25386/genetics.7097813>.

¹Corresponding author: University of Wisconsin – Madison, 1575 Linden Dr., Room 459 Moore Hall, Madison, WI 53706. E-mail: ndelegatti@wisc.edu

between tassel and ear may be causative and persists beyond temperate germplasm.

Previous studies have identified quantitative trait loci (QTL) and quantitative trait nucleotides associated with different aspects of tassel morphology and development that colocalize with *teosinte branched1 (tb1)* and *teosinte glume architecture1 (tga1)*, which were targets of domestication that changed plant and inflorescence architecture between teosinte and modern maize (Doebley *et al.* 1995; Wang *et al.* 2005; Brown *et al.* 2011; Wu *et al.* 2016). A study mapping tassel architecture in a population of recombinant inbred lines derived from a cross between maize and teosinte identified a QTL and evidence of selection at the *barren inflorescence2 (bif2)* locus (Xu *et al.* 2017), which has been characterized previously as decreasing the number of tassel branches and spikelets (McSteen and Hake 2001). The same study identified five additional QTL that colocalized with inflorescence development genes and were in the list of genes identified as putatively selected during maize domestication by Hufford *et al.* (2012). These findings provide evidence for selection on tassel morphology during domestication; however, tassel morphology has continued to change postdomestication, including significant differences observed within breeding germplasm developed between the early 20th century and modern day (Meghji *et al.* 1984; Duvick 2005).

Until 1935, most of the maize grown in the North American Corn Belt consisted of open-pollinated populations, in which plants are allowed to reproduce freely with each other. Within 4 years, however, >90% of maize grown in Iowa had transitioned to higher-yielding hybrids created by controlled crosses, and the rest of the Corn Belt soon followed (Reif *et al.* 2005). The transition to single-cross hybrids was largely driven by key founder lines (B14, B37, and B73) derived from a pivotal maize population called Iowa Stiff Stalk Synthetic (BSSS), which was created in the 1930s by intermating 16 inbred lines (Lamkey *et al.* 1991; Reif *et al.* 2005). These founder lines and their combinations, referred to as Stiff Stalk lines, became preferentially used as females in hybrid breeding schemes, while other inbred lines that combined well with them were used as males (Reif *et al.* 2005). These early choices laid the framework for what would eventually become the heterotic groups used in maize breeding today. Descendants of the BSSS population have been used universally across proprietary breeding programs, resulting in a number of commercial Stiff Stalk lines protected by Plant Variety Protection certificates (PVP lines) (Mikel and Dudley 2006).

The shift in breeding methods to single-cross hybrids placed an emphasis on developing inbred lines with characteristics that enhance their potential to serve as parents. These parents are subsequently crossed to each other to produce vigorous hybrid offspring. In open-pollinated populations, a competitive advantage was conferred by greater pollen production and dispersal (Friedman and Barrett 2009). Inbred line breeding greatly reduced that competitive advantage as breeders began making more controlled crosses; there is also evidence that inbreeding tends to shift resource allocation to

the female inflorescence (Burd and Allen 1988). Thus, we hypothesized that selection in the Stiff Stalks by breeders between the original BSSS population and modern PVP lines acted to reduce overall tassel size.

Among the germplasm used in this study are inbred lines derived from the original BSSS population, as well as a number of commercially developed inbred lines for which the Plant Variety Protection certificates have recently expired (ex-PVPs). These ex-PVP lines represent the most modern germplasm from private seed companies that is available to the public, and they can be traced back to founder lines from the BSSS population. These two sets of materials afford us an opportunity to evaluate changes in maize tassel architecture caused by the accelerated evolutionary process of modern breeding. We used single nucleotide polymorphisms (SNPs) identified as significant in association mapping as *a priori* selection candidates, and compared selection statistics at those SNPs to their genome-wide distribution. If selection by breeders between the BSSS and modern ex-PVPs acted to reduce tassel size, we expect that loci associated with tassel morphology phenotypes would show enrichment for selection signatures relative to the rest of the genome. Indeed, we observe an enrichment of selection statistic scores in regions containing SNPs associated with tassel morphological traits, a finding that is consistent across three different selection statistics.

Materials and Methods

Populations

This study used two populations of maize inbred lines: a diversity panel and a nested association mapping (NAM) population. The diversity panel (WiDiv-942) consists of 942 diverse lines that typically reach grain physiological maturity in the Midwest regions of the United States, and represents an expansion of the 503 line Wisconsin Diversity panel (WiDiv-503; Hirsch *et al.* 2014; M. Mazaheri, M. Heckwolf, B. Vaillancourt, J. Gage, B. Burdo, S. Heckwolf, K. Barry, A. Lipzen, C. Bastos Riviero, T. Kono, H. Kaeppler, E. Spalding, C. Hirsch, C. R. Buell, N. de Leon, and S. Kaeppler, unpublished data) to increase breadth and depth of genetic diversity as well as to include a greater representation of ex-PVP inbreds. The NAM population (PHW65 NAM) was styled as a smaller version of the maize NAM (McMullen *et al.* 2009) and consists of three biparental populations that share a common parent, the inbred line PHW65. PHW65 is an ex-PVP Lancaster-type line. The three founder lines are PHN11, Mo44, and MoG. PHN11 is an ex-PVP Iodent line closely related to PH207; Mo44 is a Missouri line derived from Mo22 and Pioneer Mexican Synthetic 17 (Flint-Garcia *et al.* 2005); and MoG is a Missouri line characterized by wide leaves, a heavy stalk, and high pollen production. The founder lines were chosen for their differing tassel morphologies: MoG and Mo44 have longer tassels than the recurrent parent PHW65; PHN11 has more branches than PHW65; and the MoG tassels are heavy and curved while the PHN11 tassels

are light and more rigid. Together, the four parental lines comprise a diversity of tassel size and shape. Each biparental population consisted of 200 individuals derived by double-haploid generation from the F₂ of the original parents.

Phenotypic measurements

The WiDiv-942 was grown in the summers of 2013 and 2014 at the University of Wisconsin's Arlington Agricultural Research Station and in the summer of 2015 at the West Madison Agricultural Research Station. The PHW65 NAM was grown in 2014 at the Arlington Agricultural Research Station and in 2014 and 2015 at the West Madison Agricultural Research Station. All experiments were planted as randomized complete block designs with two replications at each location in 4.57 m long single row plots with 0.76 m between rows at a density of 72,000 plants per hectare.

Both populations were measured for branch number (BN), tassel length (TL), and spike length (SL) on three representative plants per plot during or after flowering. BN was quantified as the number of primary tassel branches, TL was measured as the distance in cm from the lowest tassel branch to the tip of the spike, and SL was measured as the distance in centimeter from the uppermost tassel branch to the tip of the spike. All traits were measured in all environments with the exception of SL, which was not measured in the PHW65 NAM at West Madison in 2014. Three derived tassel traits can be calculated from these measurements: branch zone length (BZ) as TL minus SL, branch density (BD) as BN divided by BZ, and spike proportion (SP) as SL divided by TL.

In addition to manual measurements, tassels measured in 2015 were also imaged and measured automatically using TIPS (Gage *et al.* 2017), which estimates TL and BN, as well as tortuosity (TR), compactness (CP), fractal dimension (FD), skeleton length (SK), perimeter length (PR), and tassel area (TA) from two-dimensional profile images of tassels. TR is a measure of tassel curvature expressed as a proportion, the length of a straight line from base to tip divided by the length of a spline fit along the tassel itself from base to tip; TA is the number of pixels in the tassel; CP is measured as TA divided by the area of the tassel's convex hull; FD is a measure of overall tassel complexity; SK is a measure of overall linear length of the tassel, including the main spike and all branches; and PR measures the length of the tassel's outline. Tassel weight (TW) was also measured as the mean dry weight of three tassels per plot.

Rather than directly use TA and the estimates of TL and BN produced by TIPS, we used partial least squares regression models to generate more accurate, image-based predictions of TL, BN, SL, and TW. Models were fit using the *pls* package (Mevik and Wehrens 2007) in R (R Core Team 2016). Individual tassel measurements were used for model fitting and prediction was done using all eight model components (TIPS produces eight tassel measurements). The TIPS output for the PHW65 NAM population were used as explanatory variables and the model was trained on manually measured values of TL, SL, BN, and TW in the PHW65 NAM. The resulting

partial least squares regression models were used to predict image-based values of TL, SL, BN, and TW from the TIPS output for images of the WiDiv-942 population. The opposite was done as well: TIPS outputs for the WiDiv-942 population were used as explanatory variables in conjunction with manual measurements of TL, SL, BN, and TW to train the models, which were then used to predict image-based values of TL, SL, BN, and TW for the PHW65 NAM individuals. Image-based predictions of TL, SL, BN, and TW are referred to as TLp, SLp, BNp, and TWp.

The WiDiv-942 inbred line best linear unbiased predictions (BLUPs) for all manually measured traits, except TW, were calculated as the random genotypic effect predictions from the linear model $y = \mu + g + e + g \times e + b(e) + \varepsilon$, where y is the phenotypic response, g is the genotypic effect of an inbred line, e is the environmental effect of a year–location combination, $g \times e$ is the genotype-by-environment interaction, $b(e)$ is the effect of replicate within environment, and ε is the independently and identically distributed error term. The PHW65 NAM BLUPs for manually measured traits, except TW, were calculated from the model $y = \mu + g + e + p + g \times e + p \times e + b(e) + \varepsilon$, where p is an effect attributed to each biparental population, $p \times e$ is a population-by-environment effect, and all other terms are the same as in the WiDiv-942 model. BLUPs for image-based traits and TW for both populations were calculated from models identical to those above, but with all terms containing an environmental effect removed and a standalone replication term included. All effects were considered random, and models were fit with the R package *lme4* (Bates *et al.* 2016). BN, BD, PR, SK, and TW were square root transformed to better meet the model assumption of normally distributed residuals, and TR was removed from further analysis due to violation of model assumptions. All BLUPs can be found in Supplemental Material, File S3.

Heritability was calculated on an entry-mean basis for all manually measured traits except for TW as $h^2 = \sigma_g^2 / (\sigma_g^2 + \frac{\sigma_{g \times e}^2}{e} + \frac{\sigma_{be}^2}{b})$, where σ_g^2 , $\sigma_{g \times e}^2$, and σ_{be}^2 were estimated from the linear models described above and b and e are the number of replications and the number of environments, respectively. Repeatability was calculated similarly for all image-based traits and TW as $r = \sigma_g^2 / (\sigma_g^2 + \frac{\sigma_{be}^2}{b})$, because image-based traits and TW were measured only in a single environment.

Genotypic and phenotypic correlations between all traits were calculated for each population. Because of differing numbers of phenotyped lines and differing numbers of environments in which the traits were evaluated, the correlations were only calculated using data from the West Madison 2015 location, and only with lines that were phenotyped for all 15 traits in that environment (693 individuals from the WiDiv-942 and 569 from the PHW65 NAM).

Genotypic data

The WiDiv-942 lines were genotyped by RNA sequencing as described in Hirsch *et al.* (2014). RNA sequencing data were

combined with RNA sequencing data from the original Hirsch *et al.* (2014) publication and aligned to the B73 version 4 reference genome sequence (Jiao *et al.* 2017) for SNP calling at 899,784 SNPs. The WiDiv-942 SNP matrix contained 30% missing data, which was imputed using fastPHASE v1.4.0 (Scheet and Stephens 2006) with the $-H$ flag set to -3 to prevent haplotype phasing and default parameters otherwise.

Inbred lines in the PHW65 NAM population were genotyped using genotyping-by-sequencing (GBS) as described in Elshire *et al.* (2011), using the GBSv2 pipeline implemented in TASSEL5 (Bradbury *et al.* 2007), resulting in 9291 SNPs, which were imputed with FSFhap (Swarts *et al.* 2014) using the “cluster” algorithm with a minimum MAF of 0.3 within each biparental population, a window size/step size of 30/15 for chromosomes 1, 4, and 6, and 50/25 otherwise.

The four parents of the PHW65 NAM population were resequenced and genotyped at 23.3 million SNPs (Brohammer *et al.* 2018). The 31% missing SNP data in the parents was imputed using fastPHASE v1.4.0 (Scheet and Stephens 2006) with the $-H$ flag set to -3 to prevent haplotype phasing, the $-K$ flag set to 7, and the $-T$ flag set to 10. The $-K$ flag sets the number of haplotype clusters at 7 and was chosen by evaluating imputation accuracy for K values between 1 and 31 and choosing the value above which minimal gains in accuracy were observed, similar to Tian *et al.* (2011). The $-T$ flag sets the number of random starts of the algorithm. As opposed to the imputation of the WiDiv-942, setting the $-K$ and $-T$ flags helped reduce the computational time of imputation for the larger number of resequencing SNPs. SNP calls from the four resequenced parents at 10.6 million polymorphic SNPs were projected onto their biparental progeny in the PHW65 NAM using GBS markers as a scaffold, as described in Tian *et al.* (2011).

Classification of public and ex-PVP Stiff Stalk lines

We identified lines that represent early Stiff Stalk germplasm, recent ex-PVP Stiff Stalk germplasm, and publicly developed Stiff Stalk germplasm that represents a temporally intermediate group between the two.

The WiDiv-942 contains 47 inbreds derived through self-pollination from the original BSSS population (referred to hereafter as BSSSC0), which represent maize Stiff Stalk germplasm from the early 20th century.

From all ex-PVP lines in the WiDiv-942, inbreds were chosen that showed genotypic evidence of being directly descended from the BSSS population (File S1). Although pedigree information was available for some ex-PVPs, the number of individuals that could be traced by pedigree back to BSSS-derived inbreds was low. Additionally, using genotypic information to identify BSSS-derived ex-PVP lines allows exclusion of individuals showing evidence of contamination from other breeding material. Population substructure within all the ex-PVP lines was estimated using ADMIXTURE (Alexander *et al.* 2009). The genotypic matrix consisting of 899,784 SNPs for 328 ex-PVP inbreds was first pruned for

linkage disequilibrium (LD) using PLINK (Chang *et al.* 2015). Using a sliding window of 50 SNPs and a step size of 10 SNPs, SNPs with a R^2 value >0.1 within the window were discarded, leaving 109,605 SNPs. The pruned marker set was used in ADMIXTURE without seeding founding individuals. Ten-fold cross-validation of the errors was minimized at K groups equal to eight as an appropriate model for this marker set. These eight groups represent the resulting subpopulations; B14, B37, B73, Oh43, Lancaster, Iodent, Iodent-Lancaster, and Flint. To identify lines that both display evidence of descent from the BSSS as well as exclude lines with evidence of introgression from other germplasm pools, individuals were required to have a sum of $>95\%$ identity to the B14, B37, and B73 groups, as well as $<2\%$ identity to each of the other groups. Of the lines that met this requirement, 21 had been phenotyped and were kept for subsequent analysis. Those BSSS-descended ex-PVP lines are referred to hereafter simply as ex-PVPs. Hierarchical clustering of the ex-PVPs and BSSSC0 lines revealed six of the BSSSC0 lines did not cluster with the others. Those six were removed from further analysis, leaving 41 BSSSC0 lines.

The third group, referred to as “Public,” is comprised of 16 inbred lines from the WiDiv-942 that are known by pedigree to have been developed from the original Stiff Stalk synthetic population.

Best linear unbiased estimators (BLUEs) for all lines in the WiDiv-942 were calculated by the same models used to calculate BLUPs, but with genotype fit as a fixed rather than random effect. BLUEs for the BSSSC0, Public, and ex-PVP lines were compared for each of the 15 tassel morphological traits, and significant differences were evaluated by Tukey’s honest significant difference. (Tukey 1949).

Mapping

Genome-wide association studies (GWAS) for the WiDiv-942 were performed in R (R Core Team 2016) using the multiple locus linear mixed model implemented in *farmCPU* (Liu *et al.* 2016). The first five principal components were included to account for spurious associations due to population structure, and the threshold for initial inclusion of SNPs into the model was set to allow an empirical false entry rate of 1% based on 1000 permutations. SNPs with a minor allele frequency <0.02 were excluded from analysis, leaving 529,018 SNPs for GWAS. SNPs with a Bonferroni-adjusted P -value <0.05 were considered significant. Because of missing phenotypic data, not all 942 individuals were included in mapping. For manual traits other than TW, 791 unique individuals were included in GWAS. For image-based traits and TW, 660 individuals were included in the GWAS.

The PHW65 NAM was mapped using stepwise model selection with the GBS SNPs followed by resampling GWAS with the 10.6 million projected parental SNPs, as described in Tian *et al.* (2011). The stepwise model selection step, performed using the StepwiseAdditiveModelFitterPlugin in TASSEL5 (Bradbury *et al.* 2007), added SNPs below an entry threshold (set by permutation for each trait, ranging from

9.6×10^{-5} to 1.5×10^{-4}) and allowed terms to exit the model based on a limit set at twice the entry threshold. Residuals from the final stepwise model were calculated separately for each chromosome, with any SNPs on that chromosome excluded from the model. The residuals for each chromosome were used as the dependent variable in a resampling-based mapping method similar to that described in Valdar *et al.* (2006) and Tian *et al.* (2011), implemented with the ResamplingGWASPlugin in TASSEL5 (Bradbury *et al.* 2007). Briefly, 80% of the PHW65 NAM individuals were randomly selected and forward regression was used to fit SNPs that were associated with the residuals at a significance level $<1 \times 10^{-4}$. This process was repeated 100 times for each combination of trait and chromosome, and each SNP fitted by the resampling GWAS method was assigned a resampling model inclusion probability (RMIP) between 0 and 1, reflecting the proportion of models in which that SNP was included. A permutation-based threshold for RMIP was calculated in a manner similar to that described in Tian *et al.* (2011) and five permutations were performed for each chromosome, for each trait. An RMIP threshold of ≥ 0.05 kept the number of false positives to ≤ 5 per trait, or on average, ≤ 1 false positive genome-wide per permutation.

Selection statistics

We used the 41 BSSSC0 and 21 ex-PVP lines to perform genome-wide scans for selection. The BSSSC0 lines represent maize Stiff Stalk germplasm from the early 20th century, while the ex-PVP lines represent the product of ~ 60 years of commercial maize breeding. We calculated cross population extended haplotype homozygosity (XP-EHH; Sabeti *et al.* 2007) between the two groups using the WiDiv-942 SNPs with hapbin (Maclean *et al.* 2015), with the `-minmaf` argument set to 0 and the `-scale` argument set to 20,000 bp. Only the 877,627 SNPs with no missing data in either subpopulation were used. Scores were binned by taking most extreme XP-EHH score from each nonoverlapping 10 kb window.

Cross population composite likelihood ratio (XP-CLR; Chen *et al.* 2010) was calculated with a modified version of XPCLR v1.0 (Hufford *et al.* 2012; https://figshare.com/articles/new_fileset/757736) on the same set of SNPs as XP-EHH, with a grid size of 100 bp, a genetic window size of 0.1 cM, a maximum of 50 SNPs per window, and correlation level of 0.7. The genetic positions of the WiDiv SNPs were estimated by linear interpolation of the NAM genetic map (McMullen *et al.* 2009), downloaded from https://maizegdb.org/data_center/map. As with XP-EHH, the resulting XP-CLR values were also binned by using the maximum score in each nonoverlapping 10 kb window to represent that window.

Fixation index (F_{ST}) between the two groups was calculated on the same set of SNPs as XP-EHH and XP-CLR, using <http://beissingerlab.github.io/docs/vectorFst.R> (Beissinger *et al.* 2014), with a correction for small number of populations and uneven sample sizes according to Weir and Cockerham (1984). As with XP-EHH and XP-CLR scores, F_{ST} values were

binned into 10 kb windows represented by the maximum score in that window.

XP-EHH, XP-CLR, and F_{ST} scores were assigned to each SNP significantly associated with each of the 15 traits by using the score for the 10 kb window to which each SNP belonged. The distribution of those scores were tested against null distributions generated by two different methods: circular permutation and window-matching permutation.

Because the distributions of selection statistics for tassel-associated SNPs could be affected by having certain SNPs physically near each other or represented more than once (associated with more than one trait), we used 10,000 iterations of a circular permutation method (Wallace *et al.* 2014) to create a null distribution for each selection statistic. Circular permutation is done by keeping the order and relative position of all the hits intact, while randomizing their starting position along the chromosome. The relationships between the tassel-associated SNPs are maintained, but their relationship to selection statistics along the chromosome is randomized.

Because the distribution of selection statistics in tassel-associated windows could also be an artifact of other window characteristics, we created a second null distribution for each selection statistic by randomly selecting windows from the rest of the genome that had similar characteristics to the tassel-associated windows. For each tassel-associated window, 50 windows with a similar number of genes (± 1 gene), recombination rate ($\pm 20\%$), frequency of alleles in the BSSSC0 lines ($\pm 15\%$), and frequency of alleles in the ex-PVP lines ($\pm 15\%$) were randomly sampled without replacement. For tassel-associated windows with < 50 matching windows genome-wide, the allele frequency criteria were omitted.

The distributions of selection statistics for the tassel-associated SNPs were compared to both null distributions both visually and using the Kolmogorov–Smirnov test with a two-sided P -value (Kolmogorov 1933; Smirnov 1948).

We also investigated whether the distribution of selection statistics for tassel-associated SNPs was being driven by traits characteristic of the ex-PVPs or the BSSSC0 inbreds. TL, TLp, SL, SLp, BZ, and SP are all related to the length of the tassel and, with the exception of BZ, have higher values in the ex-PVPs. BN, BNp, BD, CP, FD, SK, PR, TW, and TWp are more related to the quantity and density of branches, and have higher values in the BSSSC0 lines. The distributions of XP-EHH scores for these “length” and “branchiness” traits were examined separately to see if one or the other type of trait had undue influence on the overall distribution.

Data availability

Tassel images of both populations and genotypic data for the PHW65 NAM are available on the CyVerse Data Store (<https://doi.org/10.7946/P2K04H>) and genotypic data for the WiDiv-942 can be found at <https://doi.org/10.5061/dryad.6tg35t6> (M. Mazaheri, M. Heckwolf, B. Vaillancourt, J. Gage, B. Burdo, S. Heckwolf, K. Barry, A. Lipzen, C. Bastos Riviero, T. Kono, H. Kaeppler, E. Spalding, C. Hirsch, C. R. Buell,

N. de Leon, and S. Kaeppler, unpublished data). Code is available on GitHub at github.com/joegage/tassel_selection. Supplemental material available at Figshare: <https://doi.org/10.25386/genetics.7097813>.

Results

Tassels exhibit morphological diversity for traits measured manually and by image-based methods

Manual measurements of TL, SL, BN, BD, BZ, SP, and TW for >22,000 individual tassels were recorded for two populations, an association panel (WiDiv-942; M. Mazaheri, M. Heckwolf, B. Vaillancourt, J. Gage, B. Burdo, S. Heckwolf, K. Barry, A. Lipzen, C. Bastos Riviero, T. Kono, H. Kaeppler, E. Spalding, C. Hirsch, C. R. Buell, N. de Leon, and S. Kaeppler, unpublished data) and an NAM population (PHW65 NAM) with PHW65 as the common parent and PHN11, MoG, and Mo44 as founder parents. These materials were grown in three environments between 2013 and 2015 in south central Wisconsin. The WiDiv-942 association panel used in this study is comprised of 942 diverse inbred lines, while the PHW65 NAM consists of three nested biparental populations of 200 individuals each. The WiDiv-942 was chosen to capture broad phenotypic and genetic diversity, whereas the PHW65 NAM leverages controlled biparental crosses between individuals with contrasting tassel morphologies. All tassels manually measured in 2015 were also photographed and measured using the image-based tassel phenotyping system TIPS (Gage *et al.* 2017), resulting in image-based measurements of TL, SL, BN, and TW (referred to as TLp, SLp, BNp, and TWp, respectively), along with four other traits: CP, FD (a measure of overall complexity), SK (a measure of total linear length), and PR (the length of a tassel's two-dimensional outline). Accuracy (Pearson's correlation) of image-based measures for the four traits measured by both manual and image-based methods ranged from 0.71 (BN/BNp) to 0.92 (TW/TWp) in the PHW65 NAM population and from 0.81 (BN/BNp) to 0.89 (TL/TLp and TW/TWp) in the WiDiv-942 population.

All 15 tassel morphological traits measured manually or by image-based phenotyping showed variability for raw measurements within both the WiDiv-942 and PHW65 NAM populations (Figure S1 and Table 1). Excluding FD, which ranged from 1.1 to 1.6, the other 14 traits exhibited between twofold (SLp) and 36-fold (BNp) variability within the PHW65 NAM population and between twofold (SP) and 22-fold (SK) variability within the WiDiv-942 population.

The 15 traits can be broadly classified into two groups: those that contribute to tassel size by contributing to length (TL, TLp, SL, SLp, SP, and BZ) and those that contribute to tassel size by contributing to branchiness (BN, BNp, BD, CP, FD, SK, PR, TW, and TWp). Although TW and TWp are measures of mass rather than branching, both traits are affected more by changes in branchiness than changes in TL and therefore are included in the former group.

For most traits, the PHW65 NAM population has a higher or equivalent mean to the WiDiv-942 population, with the exception of TWp (0.79 g lighter), BN (1.83 fewer branches), BNp (1.07 fewer branches), and BD (0.24 fewer branches/cm). As expected, given the allelic representation contained in each of the populations, phenotypic variability within the PHW65 NAM is lower than in the WiDiv-942, with the exception of TW (SD 0.3 g greater) and BNp (SD 0.07 branches greater).

Heritabilities for manually measured traits ranged from 0.93 (BZ, BD, and SP) to 0.97 (BN) in the WiDiv-942 population and from 0.72 (BZ and SP) to 0.94 (BN and TW) in the PHW65 NAM population. Because images and TW were taken only at one location, repeatability was calculated for image-based traits and TW in place of heritability. Repeatabilities ranged from 0.72 (PR) to 0.86 (TWp) in the WiDiv-942 population and 0.63 (SLp and TLp) to 0.72 (SK) in the PHW65 NAM population (Table 1). The high heritabilities for measurements taken in multiple environments indicate large genotypic variance relative to genotype-by-environment variance and error. Similarly, high repeatabilities for traits that were measured in a single environment indicate large genotypic variance relative to error. It is unsurprising that the image-based repeatabilities were lower than the manually measured heritabilities, as manual measurements were taken in three separate environments while image-based traits were measured in one environment.

Genotypic and phenotypic correlations were calculated within the single environment in which all traits were measured (Figures S2 and S3). With the exception of CP, branchiness traits were generally positively correlated with each other in both populations. Similarly, length-related traits were all positively correlated with each other in both populations. Phenotypic and genotypic correlations were similar to each other in both populations, partly due to relatively high heritability of all traits and partly due to having been calculated within a single location.

Tassel morphology has changed over the course of 20th century maize breeding

The WiDiv-942 association panel contains 41 inbred lines developed by selfing without selection from cycle 0 of the BSSS population (BSSSC0), 16 public inbred lines with pedigrees that trace entirely back to lines derived from the BSSS, and 21 ex-PVPs with genotypic evidence for descent from the BSSS (File S1). These three groups of lines allow comparison of tassel morphology over the course of modern maize breeding. The BSSSC0 lines represent the earliest material, the ex-PVPs represent the most recent and heavily selected material, while the public lines form an intermediate group.

Comparison of BLUEs for each group revealed that the mean values of public inbred BLUEs for each trait showed between a 2% (FD) and a 16% (TWp and BNp) change relative to the BSSSC0 line, while ex-PVP lines displayed between a 4% (TLp) and a 45% (TWp) change in mean relative to the BSSSC0 lines (Figure 1). For all traits except CP, the public

Table 1 Summary of traits and heritabilities

Trait name (units)	Method	Abbreviation	Mean		SD		Heritability/repeatability	
			PHW65 NAM	WiDiv-942	PHW65 NAM	WiDiv-942	PHW65 NAM	WiDiv-942
Tassel length (cm)	Manual	TL	35.82	32.39	4.57	4.81	0.89	0.95
	Image	TLp	35.83	34.21	3.36	3.99	0.63	0.79
Tassel weight (g)	Manual	TW	16.11	15.6	7.16	6.86	0.94	0.96
	Image	TWp	15.38	16.17	5.41	5.5	0.71	0.86
Branch number (count)	Manual	BN	10.2	12.03	3.82	6.35	0.94	0.97
	Image	BNp	11.1	12.17	3.81	3.74	0.70	0.82
Spike length (cm)	Manual	SL	23.73	22.52	3.66	4.37	0.81	0.95
	Image	SLp	25.36	22.77	2.62	3.1	0.63	0.79
Branch zone (cm)	Manual	BZ	10.87	9.87	2.62	3.03	0.72	0.93
Spike proportion (proportion)	Manual	SP	0.69	0.69	0.06	0.08	0.72	0.93
Branch density (count/cm)	Manual	BD	0.97	1.21	0.32	0.51	0.80	0.93
Compactness (proportion)	Image	CP	0.34	0.34	0.11	0.14	0.70	0.76
Fractal dimension (dimension)	Image	FD	1.42	1.42	0.04	0.05	0.67	0.81
Perimeter length (pixels)	Image	PR	10,902.52	10,399.72	3167.7	3585.34	0.68	0.72
Skeleton length (pixels)	Image	SK	5680.85	5585.8	2021.27	2377.85	0.72	0.78

Descriptive statistics of 15 tassel morphological traits measured in two populations. All manual traits except tassel weight were measured in three environments, while tassel weight and all image traits were measured in one environment. Means and SD were calculated from untransformed per-plot averages of measurements taken on up to three plants.

inbred lines displayed intermediate phenotypes between the medians of the BSSSC0 and ex-PVP lines. Public inbred lines were significantly different from BSSSC0 lines for BN, BD, FD, TWp, and BNp, while ex-PVP lines were significantly different from BSSSC0 lines for all traits except TL, TLp, and CP. Public lines and ex-PVP lines differed significantly for BN, SP, BD, CP, FD, TW, TWp, and BNp (all comparisons: Tukey's honest significant difference, $\alpha = 0.05$). Generally, tassel length (TL and TLp), spike length (SL and SLp), and SP increased over time, while all other traits decreased over time. The observed phenotypic trends suggest selection on tassel morphology between the open-pollinated BSSS and public inbreds, as well as continued selection between the public lines and the ex-PVP lines.

GWAS identifies SNPs associated with tassel morphological traits

All 15 traits were mapped in the WiDiv-942 association panel using the multiple locus linear mixed model implemented in FarmCPU (Liu *et al.* 2016), with 529,018 SNPs discovered from RNA sequencing with minor allele frequency >0.02. Traits were mapped in the PHW65 NAM population using a resampling-based GWAS approach (Tian *et al.* 2011), with 10.6 million resequencing SNPs projected from parental lines onto the progeny, which were genotyped at 9291 GBS SNPs. In the WiDiv-942 population, 87 SNPs were identified as significantly associated with 12 of the 15 traits. In the PHW65 NAM population, 155 SNPs were identified as significantly associated across all traits (File S2).

The manually measured traits returned a greater number of significant associations in total than the image-based traits, as expected based on the relative measures of heritability and repeatability. In 10 instances, manual and image-based measures of the same phenotype were associated with the same SNP: one SNP for TL and TLp, four for BN and BNp, one for SL

and SLp, and five for TW and TWp. One pair of SNPs each for BN and weight were identified in the WiDiv-942 population, and the rest of the colocalized SNPs were discovered in the PHW65 NAM population. The single SNP associated with TL was the same as the single SNP associated with SL; a SNP associated with weight and a SNP associated with BN were within 2.5 kb of each other. In two other instances, the manually measured and image-based traits were associated with SNPs within 5 kb of each other, and in an additional two instances they were associated with SNPs that were located within 150 kb of each other (Figure S4). Generally, there is more concordance between SNPs associated with manual and image-based measurements for traits with higher heritabilities/repeatabilities (BN and TW) than lower heritabilities/repeatabilities (SL and TL). This is to be expected, as genetic signal is stronger when heritability is high, but the pattern seen in this study may be due only to chance as BN and TW are only marginally more heritable than SL and TL.

Selection statistics show evidence for selection at SNPs associated with tassel morphology

To test for genomic signatures of selection on tassel morphology, SNPs associated with tassel characteristics in the WiDiv-942 and PHW65 NAM lines were used as *a priori* candidates for regions having undergone selection between the BSSSC0 lines and the ex-PVP lines. Scans for selection were conducted using LD-focused methods XP-EHH (Sabeti *et al.* 2007) and XP-CLR (Chen *et al.* 2010), and the allelic frequency change based method F_{ST} (Weir and Cockerham 1984). Genome-wide results from selection scans were binned into 10 kb windows, and windows containing SNPs associated with tassel morphology were compared to the genome-wide distribution of each statistic. Of the 242 total SNP-trait associations identified, 170 were in windows that had XP-EHH scores, 231 had XP-CLR scores, and 169 had F_{ST}

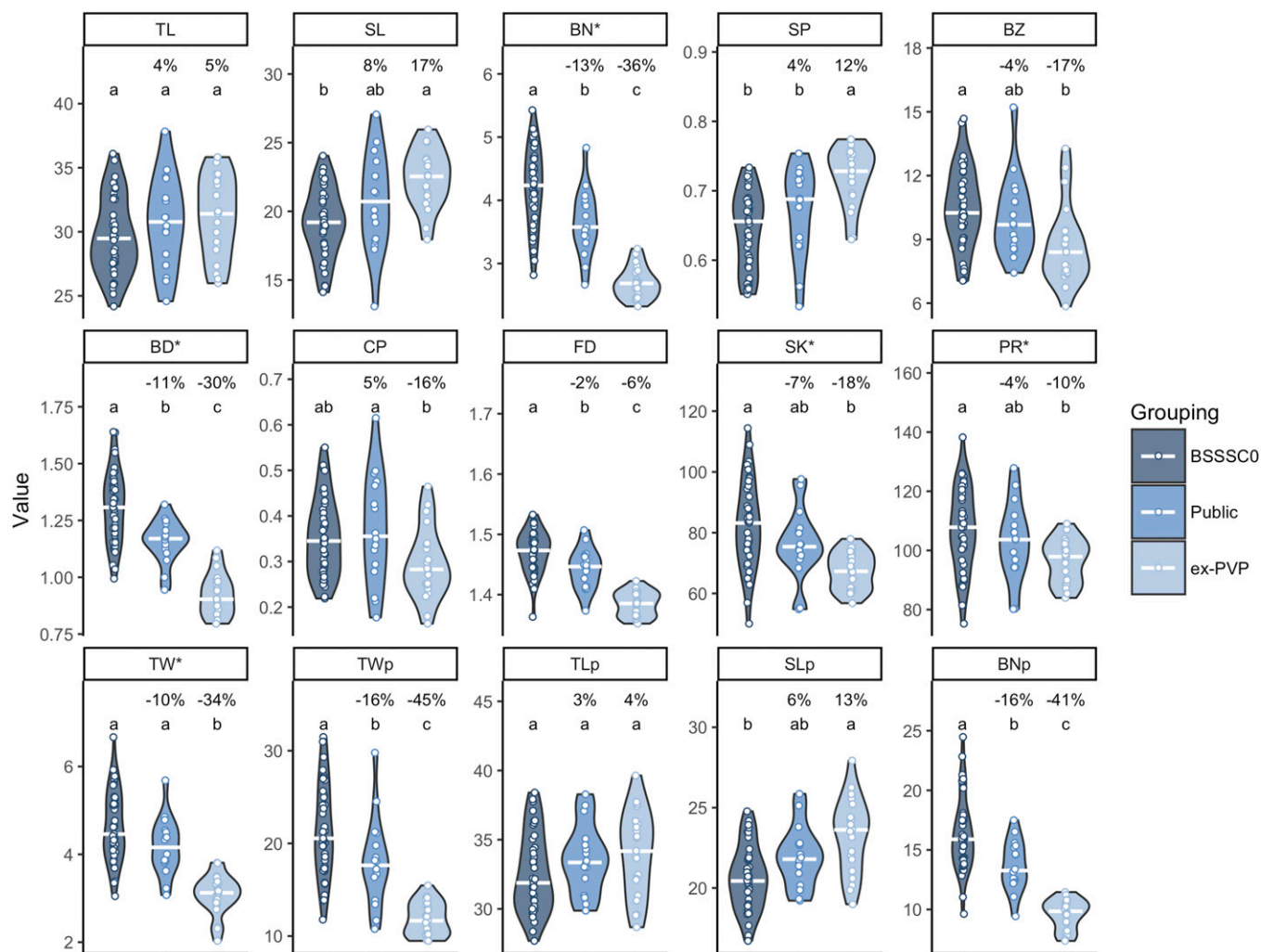


Figure 1 Tassel traits show progressive changes over time. Best linear unbiased estimators (BLUEs) of 15 tassell morphological traits for 41 BSSSC0 inbreds, 16 publicly released inbreds derived from BSSS lines, and 21 ex-PVP inbreds derived from BSSS lines. Percentages indicate the percent change in mean value relative to the BSSSC0 lines. White bars indicate the median value. Letters indicate significant differences between groups (Tukey's honest significant difference test, $\alpha = 0.05$). Trait abbreviations noted with an asterisk were square root transformed before computing BLUEs. BD, branch density; BN, branch number; BZ, branch zone; CP, compactness; FD, fractal dimension; PR, perimeter length; SK, skeleton length; SL, spike length; SP, spike proportion; TL, tassell length; TW, tassell weight; TWp, TLp, SLp, and BNp: image-based predictions of TW, TL, SL, and BN.

scores. Not all SNP-trait associations had scores for each selection statistic because the associations were discovered in the full PHW65 NAM and WiDiv-942 populations, but may lie in regions that are monomorphic between the BSSSC0 lines and ex-PVP individuals or contain missing SNP calls. The distributions of tassell-associated XP-EHH, XP-CLR, and F_{ST} scores were significantly different from genome-wide null distributions generated from circular permutations (Kolmogorov-Smirnov test, $P = 1.8 \times 10^{-3}$, 7.8×10^{-3} , and 1.9×10^{-3} , respectively), as well as genome-wide null distributions generated by randomly sampling windows with similar characteristics ($P = 3.9 \times 10^{-2}$, 1.2×10^{-3} , and 2.92×10^{-3} , respectively), suggesting enrichment for selection signals in regions associated with tassell morphology.

XP-EHH scores for tassell-associated windows (Figure 2) were enriched for values approximately >1 and < -1 , with

the majority of the enrichment coming from negative scores (Figure 3 and Figure S5). Positive XP-EHH scores indicate longer, more prevalent haplotypes in the collection of lines from the BSSSC0 population, while negative XP-EHH scores indicate longer, more prevalent haplotypes in the ex-PVP set. The greater surplus of negative scores among the tassell-associated SNPs indicates extended haplotypes at those loci in the newer ex-PVP population, relative to the ancestral BSSS. The extended haplotypes in the ex-PVP population are consistent with what would be expected if beneficial alleles were recently selected, resulting in a concurrent increase in linked haplotypes due to genetic hitchhiking (Voight *et al.* 2006). Further, the excess of negative XP-EHH scores was driven largely by associations with phenotypes related to branchiness rather than length (Figure 4; one-sided Wilcoxon rank sum test, $P = 2.9 \times 10^{-3}$). Branchiness traits have more

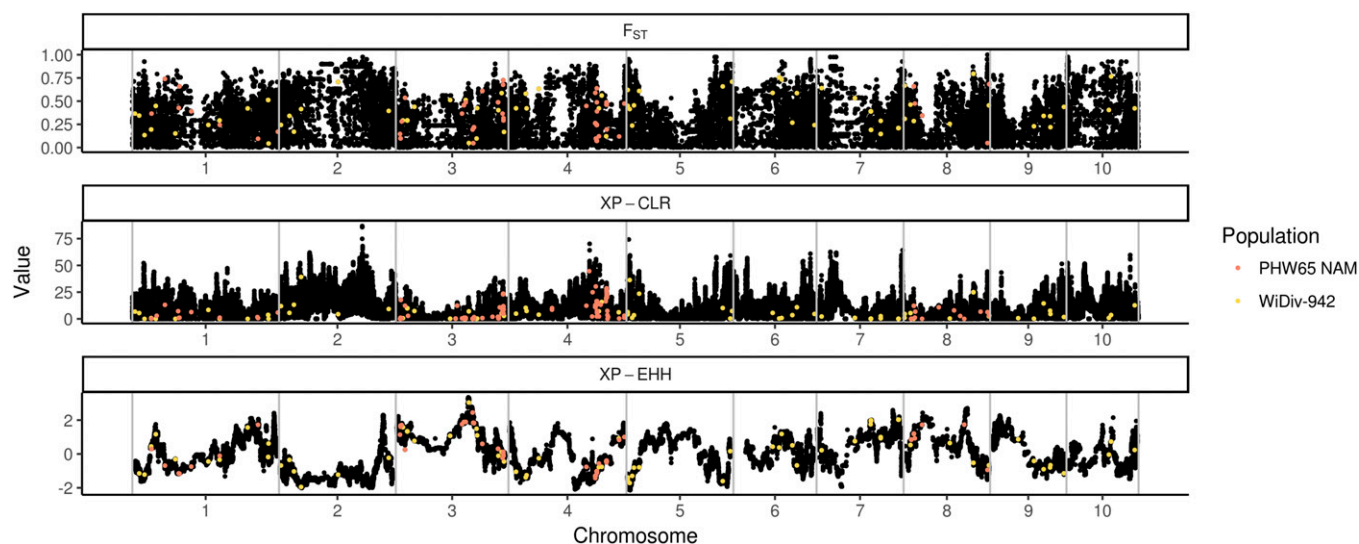


Figure 2 Physical locations and selection statistics for SNPs associated with tassel morphological traits. Values of maximum F_{ST} (top), XP-CLR (middle), and XP-EHH (bottom) in nonoverlapping 10 kb windows along the genome (black). All three statistics were conducted between 41 BSSSC0-derived inbreds and 21 ex-PVP inbreds derived from BSSS lines. Windows containing single nucleotide polymorphisms associated with tassel traits are highlighted in color; those in yellow were discovered by GWAS in the WiDiv-942 association panel, while those in red were discovered in the PHW65 NAM panel.

influence on tassel size and biomass than tassel and spike length. With the exception of BZ, all the length traits increased from the BSSSC0 to the ex-PVPs, whereas all the branchiness traits decreased. As such, most of the SNPs showing evidence of selection in the ex-PVPs are associated with traits that control overall tassel size and biomass and have decreased significantly since the 1930s.

Similar to XP-EHH, XP-CLR is a haplotype-based method for identifying selective sweeps. Rather than identify alleles that have recently arisen to substantial frequency, as XP-EHH does, XP-CLR identifies alleles that have changed in frequency more quickly than expected under neutrality (Chen *et al.* 2010). Both methods use LD around the tested allele as a measure of the allele's age. Tassel-associated XP-CLR scores (Figure 2) show enrichment for values in the tail of the distribution (Figure 3 and Figure S5), indicating an excess of regions that may have been subject to selective sweeps.

F_{ST} , a measure of population differentiation based on allele frequencies, differs from the previous two selection statistics in that it is not haplotype based. F_{ST} values for tassel-associated windows (Figure 2) are generally higher than expected under the null distribution, with a depletion of values less than ~ 0.3 and enrichment for values greater than ~ 0.3 (Figure 3 and Figure S5).

None of these three selection statistics show strong, systematic relationships with each other on a genome-wide basis (Figure S6) or among the tassel-associated windows (Figure S7). For the 101 significant associations that were genotyped in the WiDiv-942 (and hence, in the ex-PVP and BSSSC0 lines), we hypothesized that alleles with higher frequency in the ex-PVPs would generally have allelic effects conferring more ex-PVP-like phenotypes, that is, positive values for TL,

SL, TLp, SLp, and SP, and negative values for all other traits. However, we found no difference between the effect sizes of alleles with higher frequency in the ex-PVPs and alleles with higher frequency in the BSSSC0s (Welch's two-sampled *t*-test, $P = 0.87$). The lack of any difference could be due to the low number of SNPs we were able to directly test, or perhaps due to noise introduced by identifying SNPs that are not causative themselves but in LD with variants that directly affect tassel morphology.

Discussion

Tassel morphology of modern commercial inbred lines, which are used as parents of single cross hybrids grown in the United States Corn Belt, is dramatically different from tassel morphology seen in the open-pollinated varieties of the pre-hybrid era. We demonstrate that tassel morphology has been continually modified, with length-related traits increasing and branchiness traits decreasing. This trend is consistent between BSSSC0 inbreds and public BSSS-derived inbreds, as well as between public inbreds and BSSS-derived ex-PVPs. Through mapping of both image-based and manually measured phenotypes, we identify SNPs associated with tassel morphological traits, which collectively show enrichment for three selection statistics.

By studying traditionally measured traits, such as TL and BN, as well as traits that cannot be accurately measured manually, such as CP and FD, we generate a more comprehensive and nuanced representation of tassel morphology than in previous tassel studies. Previous QTL mapping and GWAS of maize tassel morphology have primarily emphasized tassel branching and length (e.g., Berke and Rocheford 1999;

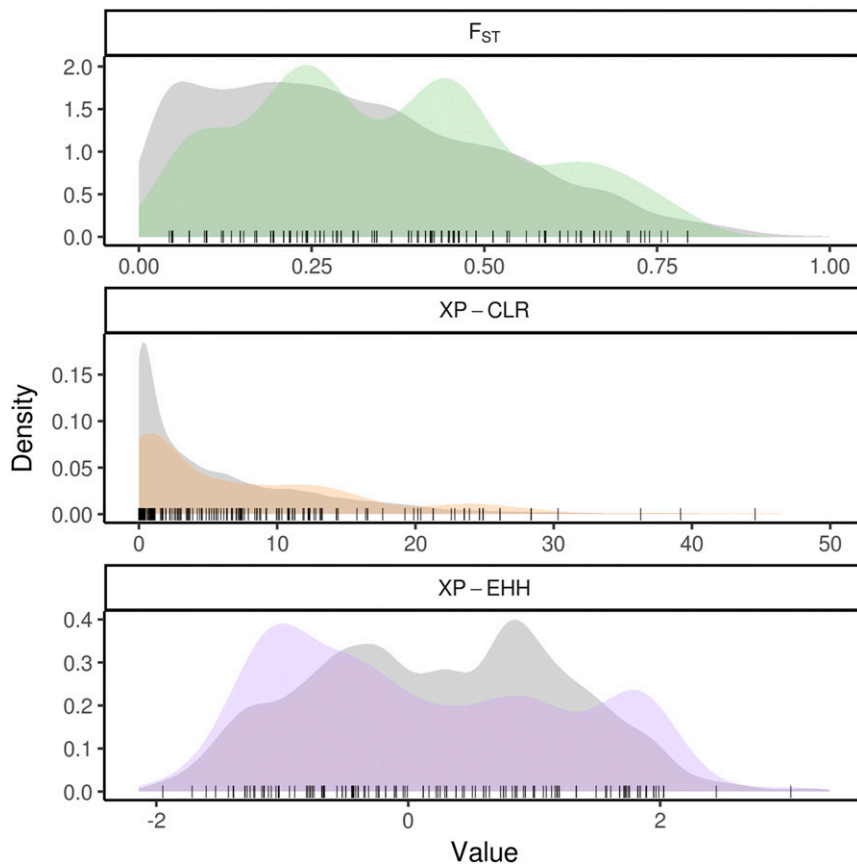


Figure 3 Densities of selection statistics for single nucleotide polymorphisms (SNPs) associated with tassel morphological traits reveal enrichment for signals of selection. Distributions of selection statistics for SNPs associated with tassel morphological traits (colored), compared to genome-wide null distributions (gray) derived by circular permutation. Values of individual SNPs associated with tassel traits are represented by points along the bottom of each plot. The XP-CLR plot was truncated at 50 for better visualization. All three statistics were calculated between 41 BSSSC0-derived inbreds and 21 ex-PVP inbreds derived from BSSS lines.

Mickelson *et al.* 2002; Upadyayula *et al.* 2006; Brown *et al.* 2011; Wu *et al.* 2016). The novel, image-based traits used in this study display considerable variability, have high enough repeatabilities to be useful in mapping studies, and resulted in significant phenotype-genotype associations that contributed to our analysis of selection signals. The ability to add information to manual phenotyping is especially influential when manual phenotyping is laborious or inefficient. For phenotyping tassels, manual measurements are relatively easy and fast to obtain. However, image-based phenotyping measures the same traits but also contributes, with no additional time investment, supplementary measurements such as CP and FD, which would be difficult, subjective, or impossible to measure otherwise. Although tassels for this study were removed from the plants before imaging (a laborious task), such methods are a step toward higher-throughput methodologies, such as image acquisition by unmanned aerial vehicles.

By comparing tassel morphology in the BSSSC0 and ex-PVP sets considered in this study, we are able to compare two groups that bookend modern breeding of one of the most important heterotic groups in North American maize germplasm. The BSSSC0 and ex-PVP groups are characterized by unique and differing tassel morphology: relative to the BSSSC0, ex-PVP tassels are longer, less branched, and weigh less. These changes in morphology reflect an overall trend toward a tassel ideotype that has few lateral branches and

produces pollen primarily by means of an extended central spike. The Stiff Stalks, traditionally used as females in breeding programs, need only produce enough pollen for self-fertilization during inbred line development and seed increases; this is reflected by the reduction of their size and weight since the inception of inbred-driven breeding schemes in the 1930s. Reduction in tassel size may have caused a decrease in the duration of pollen shed, contributing to the shortening of anthesis-silking interval between the 1930s and 1970s (Meghji *et al.* 1984). Previous experiments that recurrently selected the BSSS population for grain yield also observed a decrease in BN (Edwards 2011), further reinforcing the relationship between agronomic performance and reduced tassel size. Although the changes in tassel morphology caused by recent selection are well characterized, the genetic effects of selection by breeders are less studied.

Previous works have shown evidence for regions selected during domestication in animals such as pigs and chickens (Rubin *et al.* 2010; Yang *et al.* 2014); and in plants such as maize and soybean (Hufford *et al.* 2012; Zhou *et al.* 2015). Evidence has been found for differential artificial selection between breeds of cattle (Rothhammer *et al.* 2013), as well as for postdomestication improvement in maize and soybean (Hufford *et al.* 2012; Zhou *et al.* 2015), but the latter two characterize selection between landraces and improved varieties, which cover a much larger period of selection than just modern breeding. Work in rice (Xie *et al.* 2015) has identified

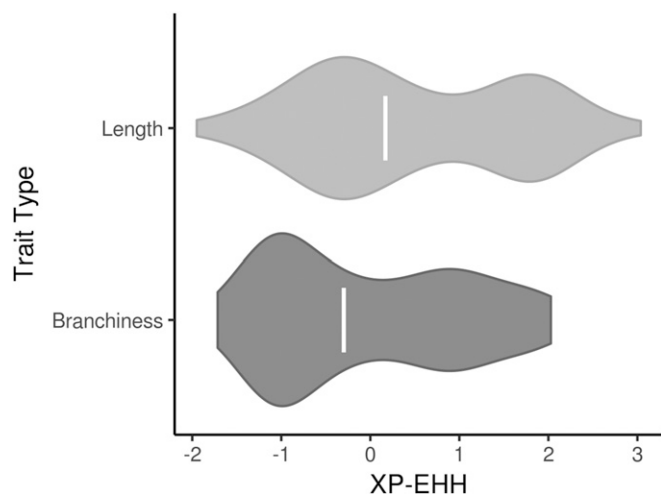


Figure 4 Signals of selection for tassel traits are driven by traits related to quantity and density of branches. Distribution of XP-EHH values for tassel trait associated SNPs, categorized into SNPs associated with branchiness traits ($n = 141$) and those associated with length traits ($n = 88$). The enrichment of negative XP-EHH values, suggestive of selection in the ex-PVP lines, is driven by traits related to branchiness. Open bars indicate median value.

overlap between inflorescence morphology QTL and regions showing evidence of selection in the last 50 years of breeding, but the genetic relationship between recent selection and inflorescence morphology in maize is relatively unexplored.

XP-EHH, XP-CLR, and F_{ST} scores for SNPs associated with tassel morphology traits showed deviations from permuted genome-wide null distributions, with enrichment for values that are indicative of selection. In *de novo* scans for selected sites, often the threshold for determining selection candidates by XP-CLR or F_{ST} is set as a quantile of the empirical distribution that limits candidates to loci in the top 0.1% or 0.01% of results (e.g., Beissinger *et al.* 2014; Jeong *et al.* 2015). XP-EHH has the agreeable property of being approximately normally distributed under a model of no selection, which allows identification of selection candidates based on P -values from the normal distribution (Sabeti *et al.* 2007). While not all tassel-associated SNPs have high enough XP-EHH, XP-CLR, and F_{ST} scores to be identified as selection candidates in a *de novo* search for selected sites, the strong enrichment for elevated scores suggests identification of regions that might be experiencing weak or ongoing selection. Genome-wide scans for selection are complicated by population dynamics and demographics that differ from expectations, and often result in identification of large genomic regions containing many features that require further investigation. Instead of approaching such an analysis with no expectations, it has been suggested (Haas and Payseur 2016) that creating an *a priori* list of candidate genes can help narrow down significant results. In this study, we used associations from two comprehensive genetic mapping resources as *a priori* candidates to identify signatures of selection associated with a specific suite of phenotypic traits.

XP-EHH identifies putatively selected sites by identifying regions where one population contains longer haplotypes around a target SNP, which have arisen due to hitchhiking with a selected locus. We observe enrichment for both positive and negative XP-EHH scores; positive scores indicate greater haplotype homozygosity in the BSSSC0 lines, whereas negative scores indicate greater haplotype homozygosity in the ex-PVP lines. There is a substantially larger enrichment for negative XP-EHH scores than positive, consistent with the hypothesis that favorable alleles from the BSSSC0 lines were selected in the ex-PVPs, resulting in increased LD in the surrounding areas. The majority of enrichment for negative XP-EHH scores appears to be driven by branchiness traits, which may have been easier to select on (intentionally or not) by breeders aiming to reduce overall tassel size. The enrichment for positive XP-EHH scores, although not as extreme as for negative scores, indicates a number of tassel-associated loci with slower LD decay in the BSSSC0 lines than in the ex-PVP set. One possible explanation for this observation is that prior to the creation of the BSSS, during a period characterized by open-pollinated populations, heavier tassels with more branches had a reproductive advantage due to higher pollen production. During the last century of maize breeding the selective pressure on high pollen production has been removed by a hybrid breeding scheme in which inbred combining ability and hybrid grain yield are prioritized. It is possible that the BSSSC0 lines show extended haplotypes due to selection favoring alleles that confer large tassel size, whereas modern breeding schemes have removed that selective pressure and allowed or encouraged recombination in previously selected regions.

The results presented here provide evidence for selection by 20th century maize breeders on regions associated with maize tassel morphology. Whether these changes are the result of direct or indirect selection on tassel size and shape is unclear. Modern, commercially developed maize inbreds display a suite of characteristics that have systematically changed since the open-pollinated varieties of the 1930s, and it is difficult to disentangle selection for changes in tassel morphology from selection for traits that are regulated by loci pleiotropically involved in tassel morphology. Because the tassel and the ear follow a shared developmental path early in development, genes affecting morphology of one may very well have effects on the other. QTL have been discovered that exhibit pleiotropic behavior, conferring a positive relationship between tassel and ear length (Brown *et al.* 2011). Mutants of the inflorescence genes *unbranched2* and *unbranched3* have been shown to simultaneously decrease branch number and increase kernel row number, a trait that directly affects grain yield (Chuck *et al.* 2014), while mutants of *zea floricaula/leafy 2* decrease both branch number and kernel row number (Bomblies and Doebley 2006). There is also evidence for shared genetic control of tassel traits and other plant architecture traits such as leaf length (Brown *et al.* 2011) and leaf angle (Mickelson *et al.* 2002), the latter of which has also changed significantly over the course of modern maize

breeding (Duvick 2005). Although more work is needed to clarify the genetic relationships between selection and maize tassel morphology, particularly with respect to disentangling pleiotropic effects, this study is a starting point for discovering the effects artificial selection has on genetic control of inflorescences in agricultural crops.

Change in tassel size and shape between the early 20th century and modern day is a well-characterized phenomenon but the causes of that phenomenon and its potential causal effects on other agronomic traits and productivity are not fully known. Our results present evidence for enriched signals of selection in genomic regions associated with tassel morphological traits. Further, this selection took place in ~60 years between the creation of the BSSS in the 1930s and the release of ex-PVP lines in the 1980s and 1990s, a tremendous example of the efficiency of modern crop breeding in imposing drastic genetic and phenotypic changes.

Acknowledgments

We thank Dustin Eilert and Marina Borsecnik for their immense contribution in organizing and conducting field trials at the University of Wisconsin, Madison; as well as Scott Stelpflug, Jonathan Renk, Brett Burdo, Katie Csizmadia, and Mike Ziehr for their help with tassel image acquisition. We also thank Peter Bradbury for help with stepwise regression, and the Ross-Ibarra group for insightful comments on the manuscript. Image analysis was performed using the compute resources and assistance of the University of Wisconsin – Madison Center for High Throughput Computing (CHTC) in the Department of Computer Sciences. The CHTC is supported by the University of Wisconsin – Madison, the Advanced Computing Initiative, the Wisconsin Alumni Research Foundation, the Wisconsin Institutes for Discovery, and the National Science Foundation, and is an active member of the Open Science Grid, which is supported by the National Science Foundation and the US Department of Energy's Office of Science. This work was supported by the National Research Initiative for Agriculture and Food Research Initiative Competitive Grants Program grant no. 2012-67013-19460 from the US Department of Agriculture National Institute of Food and Agriculture, and by US Department of Agriculture National Institute of Food and Agriculture Hatch projects WIS01923 and WIS02020. This research was funded in part by the DOE Great Lakes Bioenergy Research Center (DOE BER Office of Science DE-FC02-07ER64494). Work conducted by the U.S. Department of Energy Joint Genome Institute, a DOE Office of Science User Facility, is supported by the Office of Science of the U.S. Department of Energy under Contract No. DE-AC02-05CH11231.

Author contributions: data analysis: J.L.G. and M.R.W.; materials development and curation: J.W.E., S.K., and N.d.L.; manuscript preparation: J.L.G., M.R.W., J.W.E., S.K., and N.d.L.

Literature Cited

- Alexander, D. H., J. Novembre, and K. Lange, 2009 Fast model-based estimation of ancestry in unrelated individuals. *Genome Res.* 19: 1655–1664. <https://doi.org/10.1101/gr.094052.109>
- Bates, D., M. Maechler, B. Bolker, and S. Walker, 2015 Fitting linear mixed-effects models using lme4. *J. Stat. Softw.* 67: 1–48. <https://doi.org/10.18637/jss.v067.i01>
- Beissinger, T. M., C. N. Hirsch, B. Vaillancourt, S. Deshpande, K. Barry *et al.*, 2014 A genome-wide scan for evidence of selection in a maize population under long-term artificial selection for ear number. *Genetics* 196: 829–840. <https://doi.org/10.1534/genetics.113.160655>
- Berke, T. G., and T. R. Rocheford, 1999 Quantitative trait loci for tassel traits in maize. *Crop Sci.* 39: 1439–1443. <https://doi.org/10.2135/cropsci1999.3951439x>
- Bomblies, K., and J. F. Doebley, 2006 Pleiotropic effects of the duplicate maize FLORICAULA/LEAFY genes *zfl1* and *zfl2* on traits under selection during maize domestication. *Genetics* 172: 519–531. <https://doi.org/10.1534/genetics.105.048595>
- Bradbury, P. J., Z. Zhang, D. E. Kroon, T. M. Casstevens, Y. Ramdoss *et al.*, 2007 TASSEL: software for association mapping of complex traits in diverse samples. *Bioinformatics* 23: 2633–2635. <https://doi.org/10.1093/bioinformatics/btm308>
- Brohammer, A. B., T. J. Y. Kono, N. M. Springer, S. E. McGaugh, and C. N. Hirsch, 2018 The limited role of differential fractionation in genome content variation and function in maize (*Zea mays* L.) inbred lines. *Plant J.* 93: 131–141. <https://doi.org/10.1111/tbj.13765>
- Brown, P. J., N. Upadhyayula, G. S. Mahone, F. Tian, P. J. Bradbury *et al.*, 2011 Distinct genetic architectures for male and female inflorescence traits of maize. *PLoS Genet.* 7: e1002383. <https://doi.org/10.1371/journal.pgen.1002383>
- Buckler, E. S., J. B. Holland, P. J. Bradbury, C. B. Acharya, P. J. Brown *et al.*, 2009 The genetic architecture of maize flowering time. *Science* 325: 714–718. <https://doi.org/10.1126/science.1174276>
- Burd, M., and T. F. H. Allen, 1988 Sexual allocation strategy in wind-pollinated plants. *Evolution* (N. Y.) 42: 403–407. <https://doi.org/10.1111/j.1558-5646.1988.tb04145.x>
- Chang, C. C., C. C. Chow, L. C. Tellier, S. Vattikuti, S. M. Purcell *et al.*, 2015 Second-generation PLINK: rising to the challenge of larger and richer datasets. *Gigascience* 4: 7. <https://doi.org/10.1186/s13742-015-0047-8>
- Chen, H., N. Patterson, and D. Reich, 2010 Population differentiation as a test for selective sweeps. *Genome Res.* 20: 393–402. <https://doi.org/10.1101/gr.100545.109>
- Chuck, G. S., P. J. Brown, R. Meeley, and S. Hake, 2014 Maize *SBP-box* transcription factors *unbranched2* and *unbranched3* affect yield traits by regulating the rate of lateral primordia initiation. *Proc. Natl. Acad. Sci. USA* 111: 18775–18780. <https://doi.org/10.1073/pnas.1407401112>
- Doebley, J., A. Stec, and C. Gustus, 1995 Teosinte branched1 and the origin of maize: evidence for epistasis and the evolution of dominance. *Genetics* 141: 333–346.
- Duncan, W. G., W. A. Williams, and R. S. Loomis, 1967 Tassels and the productivity of maize. *Crop Sci.* 7: 37–39. <https://doi.org/10.2135/cropsci1967.0011183X000700010013x>
- Duvick, D. N. “What is yield?” *Developing drought and low N-tolerant maize*. CIMMYT, El Batán, Mexico. 1997: 332–335.
- Duvick, D. N., 2005 The contribution of breeding to yield advances in maize (*Zea mays* L.). *Adv. Agron.* 86: 83–145. [https://doi.org/10.1016/S0065-2113\(05\)86002-X](https://doi.org/10.1016/S0065-2113(05)86002-X)
- Edwards, J., 2011 Changes in plant morphology in response to recurrent selection in the Iowa Stiff Stalk synthetic maize population. *Crop Sci.* 51: 2352–2361. <https://doi.org/10.2135/cropsci2010.09.0564>

- Elshire, R. J., J. C. Glaubitz, Q. Sun, J. A. Poland, K. Kawamoto *et al.*, 2011 A robust, simple genotyping-by-sequencing (GBS) approach for high diversity species. *PLoS One* 6: e19379. <https://doi.org/10.1371/journal.pone.0019379>
- Fischer, K. S., G. O. Edmeades, and E. C. Johnson, 1987 Recurrent selection for reduced tassel branch number and reduced leaf area density above the ear in tropical maize populations. *Crop Sci.* 27: 1150–1156. <https://doi.org/10.2135/cropsci1987.0011183X002700060013x>
- Flint-Garcia, S. A., A.-C. C. Thuillet, J. Yu, G. Pressoir, S. M. Romero *et al.*, 2005 Maize association population: a high-resolution platform for quantitative trait locus dissection. *Plant J.* 44: 1054–1064. <https://doi.org/10.1111/j.1365-313X.2005.02591.x>
- Friedman, J., and S. C. H. Barrett, 2009 Wind of change: new insights on the ecology and evolution of pollination and mating in wind-pollinated plants. *Ann. Bot.* 103: 1515–1527. <https://doi.org/10.1093/aob/mcp035>
- Gage, J. L., N. D. Miller, E. P. Spalding, S. M. Kaeppler, and N. de Leon, 2017 TIPS: a system for automated image-based phenotyping of maize tassels. *Plant Methods* 13: 21. <https://doi.org/10.1186/s13007-017-0172-8>
- Haas, R. J., and B. A. Payseur, 2016 Fifteen years of genomewide scans for selection: trends, lessons and unaddressed genetic sources of complication. *Mol. Ecol.* 25: 5–23. <https://doi.org/10.1111/mec.13339>
- Hammer, G. L., Z. Dong, G. McLean, A. Doherty, C. Messina *et al.*, 2009 Can changes in canopy and/or root system architecture explain historical maize yield trends in the U.S. corn belt? *Crop Sci.* 49: 299–312. <https://doi.org/10.2135/cropsci2008.03.0152>
- Hirsch, C. N., J. M. Foerster, J. M. Johnson, R. S. Sekhon, G. Mut-toni *et al.*, 2014 Insights into the maize pan-genome and pan-transcriptome. *Plant Cell* 26: 121–135. <https://doi.org/10.1105/tpc.113.119982>
- Hufford, M. B., X. Xu, J. van Heerwaarden, T. Pyhäjärvi, J.-M. Chia *et al.*, 2012 Comparative population genomics of maize domestication and improvement. *Nat. Genet.* 44: 808–811. <https://doi.org/10.1038/ng.2309>
- Hunter, R. B. B., T. B. Daynard, D. J. J. Hume, J. W. W. Tanner, J. D. D. Curtis *et al.*, 1969 Effect of tassel removal on grain yield of corn (*Zea mays* L.). *Crop Sci.* 9: 405–406. <https://doi.org/10.2135/cropsci1969.0011183X000900040003x>
- Jeong, H., K. D. Song, M. Seo, K. Caetano-Anollés, J. Kim *et al.*, 2015 Exploring evidence of positive selection reveals genetic basis of meat quality traits in Berkshire pigs through whole genome sequencing. *BMC Genet.* 16: 104. <https://doi.org/10.1186/s12863-015-0265-1>
- Jiao, Y., P. Peluso, J. Shi, T. Liang, M. C. Stitzer *et al.*, 2017 Improved maize reference genome with single-molecule technologies. *Nature* 546: 524–527. <https://doi.org/10.1038/nature22971>
- Колмогоров, А. Н., 1933 Sulla determinazione empirica di una legge di distribuzione. *Giorn. 1st it lit o Ital. Attuari* 4: 83–91.
- Lamkey, K. R., P. A. Peterson, and A. R. Hallauer, 1991 Frequency of the transposable element Uq in Iowa Stiff Stalk synthetic maize populations. *Genet. Res.* 57: 1–9. <https://doi.org/10.1017/S0016672300028962>
- Liu, X., M. Huang, B. Fan, E. S. Buckler, and Z. Zhang, 2016 Iterative usage of fixed and random effect models for powerful and efficient genome-wide association studies. *PLoS Genet.* 12: e1005767 (erratum: *PLoS Genet.* 12: e1005957). <https://doi.org/10.1371/journal.pgen.1005767>
- Maclean, C. A., N. P. Chue Hong, and J. G. D. Prendergast, 2015 Hapbin: an efficient program for performing haplotype-based scans for positive selection in large genomic datasets. *Mol. Biol. Evol.* 32: 3027–3029. <https://doi.org/10.1093/molbev/msv172>
- McMullen, M. D., S. Kresovich, H. S. Villeda, P. Bradbury, H. Li *et al.*, 2009 Genetic properties of the maize nested association mapping population. *Science* 325: 737–740. <https://doi.org/10.1126/science.1174320>
- McSteen, P., and S. Hake, 2001 Barren Inflorescence2 regulates axillary meristem development in the maize inflorescence. *Development* 128: 2881–2891.
- Meghji, M. R. R., J. W. W. Dudley, R. J. J. Lambert, and G. F. F. Sprague, 1984 Inbreeding depression, inbred and hybrid grain yields, and other traits of maize genotypes representing three eras. *Crop Sci.* 24: 545–549. <https://doi.org/10.2135/cropsci1984.0011183X002400030028x>
- Mevik, B.-H., and R. Wehrens, 2007 The pls package: principle component and partial least squares regression in R. *J. Stat. Softw.* 18: 1–24. <https://doi.org/10.18637/jss.v018.i02>
- Mickelson, S. M., C. S. Stuber, L. Senior, and S. M. Kaeppler, 2002 Quantitative trait loci controlling leaf and tassel traits in a B73 x Mo17 population of maize. *Crop Sci.* 42: 1902–1909. <https://doi.org/10.2135/cropsci2002.1902>
- Mikel, M. A., and J. W. Dudley, 2006 Evolution of North American dent corn from public to proprietary germplasm. *Crop Sci.* 46: 1193. <https://doi.org/10.2135/cropsci2005.10-0371>
- R Core Team, 2016 *R: A Language and Environment for Statistical Computing*. R Foundation for Statistical Computing, Vienna.
- Reif, J. C., A. R. Hailauer, and A. E. Melchinger, 2005 Heterosis and heterotic patterns in maize. *Maydica* 50: 215–223.
- Rothhammer, S., D. Seichter, M. Förster, and I. Medugorac, 2013 A genome-wide scan for signatures of differential artificial selection in ten cattle breeds. *BMC Genomics* 14: 908. <https://doi.org/10.1186/1471-2164-14-908>
- Rubin, C. J., M. C. Zody, J. Eriksson, J. R. S. Meadows, E. Sherwood *et al.*, 2010 Whole-genome resequencing reveals loci under selection during chicken domestication. *Nature* 464: 587–591. <https://doi.org/10.1038/nature08832>
- Sabeti, P. C., P. Varilly, B. Fry, J. Lohmueller, E. Hostetter *et al.*, 2007 Genome-wide detection and characterization of positive selection in human populations. *Nature* 449: 913–918. <https://doi.org/10.1038/nature06250>
- Scheet, P., and M. Stephens, 2006 A fast and flexible statistical model for large-scale population genotype data: applications to inferring missing genotypes and haplotypic phase. *Am. J. Hum. Genet.* 78: 629–644. <https://doi.org/10.1086/502802>
- Smirnov, N., 1948 Table for estimating the goodness of fit of empirical distributions. *Ann. Math. Stat.* 19: 279–281. <https://doi.org/10.1214/aoms/1177730256>
- Swarts, K., H. Li, J. A. Romero Navarro, D. An, M. C. Romay *et al.*, 2014 Novel methods to optimize genotypic imputation for low-coverage, next-generation sequence data in crop plants. *Plant Genome* 7(3). <https://doi.org/10.3835/plantgenome2014.05.0023>
- Tian, F., P. J. Bradbury, P. J. Brown, H. Hung, Q. Sun *et al.*, 2011 Genome-wide association study of leaf architecture in the maize nested association mapping population. *Nat. Genet.* 43: 159–162. <https://doi.org/10.1038/ng.746>
- Tukey, J. W., 1949 Comparing individual means in the analysis of variance. *Biometrics* 5: 99. <https://doi.org/10.2307/3001913>
- Upadaya, N., H. S. Da Silva, M. O. Bohn, and T. R. Rocheford, 2006 Genetic and QTL analysis of maize tassel and ear inflorescence architecture. *Theor. Appl. Genet.* 112: 592–606. <https://doi.org/10.1007/s00122-005-0133-x>
- Valdar, W., L. C. Solberg, D. Gauguier, S. Burnett, P. Klennerman *et al.*, 2006 Genome-wide genetic association of complex traits in heterogeneous stock mice. *Nat. Genet.* 38: 879–887. <https://doi.org/10.1038/ng1840>
- Voight, B. F., S. Kudavalli, X. Wen, and J. K. Pritchard, 2006 A map of recent positive selection in the human genome. *PLoS Biol.* 4: e72 (erratum: *PLoS Biol.* 4: e154); [corrigenda: *PLoS*

- Biol. 5: e147 (2007)]. <https://doi.org/10.1371/journal.pbio.0040072>
- Wallace, J. G., P. J. Bradbury, N. Zhang, Y. Gibon, M. Stitt *et al.*, 2014 Association mapping across numerous traits reveals patterns of functional variation in maize. *PLoS Genet.* 10: e1004845. <https://doi.org/10.1371/journal.pgen.1004845>
- Wang, H., T. Nussbaum-Wagler, B. Li, Q. Zhao, Y. Vigouroux *et al.*, 2005 The origin of the naked grains of maize. *Nature* 436: 714–719. <https://doi.org/10.1038/nature03863>
- Wardlaw, I. F., 1990 Tansley review No. 27. The control of carbon partitioning in plants. *New Phytol.* 116: 341–381. <https://doi.org/10.1111/j.1469-8137.1990.tb00524.x>
- Weir, B., and C. C. Cockerham, 1984 Estimating F-statistics for the analysis of population structure. *Evolution* (N. Y.) 38: 1358–1370. <https://doi.org/10.1111/j.1558-5646.1984.tb05657.x>
- Wu, X., Y. Y. Li, Y. Shi, Y. Song, D. Zhang *et al.*, 2016 Joint-linkage mapping and GWAS reveal extensive genetic loci that regulate male inflorescence size in maize. *Plant Biotechnol. J.* 14: 1551–1562. <https://doi.org/10.1111/pbi.12519>
- Xie, W., G. Wang, M. Yuan, W. Yao, K. Lyu *et al.*, 2015 Breeding signatures of rice improvement revealed by a genomic variation map from a large germplasm collection. *Proc. Natl. Acad. Sci. USA* 112: E5411–E5419. <https://doi.org/10.1073/pnas.1515919112>
- Xu, G., X. Wang, C. Huang, D. Xu, D. Li *et al.*, 2017 Complex genetic architecture underlies maize tassel domestication. *New Phytol.* 214: 852–864. <https://doi.org/10.1111/nph.14400>
- Yang, S., X. Li, K. Li, B. Fan, and Z. Tang, 2014 A genome-wide scan for signatures of selection in Chinese indigenous and commercial pig breeds. *BMC Genet.* 15: 7. <https://doi.org/10.1186/1471-2156-15-7>
- Zhou, Z., Y. Jiang, Z. Wang, Z. Gou, J. Lyu *et al.*, 2015 Resequencing 302 wild and cultivated accessions identifies genes related to domestication and improvement in soybean. *Nat. Biotechnol.* 33: 408–414 [corrigenda: *Nat. Biotechnol.* 34: 441 (2016)]. <https://doi.org/10.1038/nbt.3096>

Communicating editor: A. Paterson