



Review article

EvoRegen in animals: Time to uncover deep conservation or convergence of adult stem cell evolution and regenerative processes



Alvina G. Lai, A. Aziz Aboobaker*

Department of Zoology, University of Oxford, South Parks Road, Oxford OX1 3PS, United Kingdom

ARTICLE INFO

Keywords:
Regeneration
Evolution
Invertebrates
Neoblasts
Stem cells
Piwi

ABSTRACT

How do animals regenerate specialised tissues or their entire body after a traumatic injury, how has this ability evolved and what are the genetic and cellular components underpinning this remarkable feat? While some progress has been made in understanding mechanisms, relatively little is known about the evolution of regenerative ability. Which elements of regeneration are due to lineage specific evolutionary novelties or have deeply conserved roots within the Metazoa remains an open question. The renaissance in regeneration research, fuelled by the development of modern functional and comparative genomics, now enable us to gain a detailed understanding of both the mechanisms and evolutionary forces underpinning regeneration in diverse animal phyla. Here we review existing and emerging model systems, with the focus on invertebrates, for studying regeneration. We summarize findings across these taxa that tell us something about the evolution of adult stem cell types that fuel regeneration and the growing evidence that many highly regenerative animals harbor adult stem cells with a gene expression profile that overlaps with germline stem cells. We propose a framework in which regenerative ability broadly evolves through changes in the extent to which stem cells generated through embryogenesis are maintained into the adult life history.

1. Introduction

The study of regenerative processes in animals now promises to reveal mechanisms and processes that will generate new and important biomedical knowledge, but also offers the opportunity to study the evolutionary biology of regeneration across animals (Bely and Nyberg, 2010; Tanaka and Reddien, 2011). An inclusive definition of regeneration we use is ‘the ability of adult cells to use some combination of proliferation, migration and differentiation for the purpose of ensuring continued biological function in adult animals’. However, the extent of regenerative ability defined in this way is highly variable between and within different phyla (Bely and Nyberg, 2010). This is not surprising given that regenerative capacity reflects the extent of resource investment into the maintenance of the adult organism, and this will be different in each species and within different tissues and organs. So, while ostensibly the ability to extensively regenerate adult body structures would seem like an advantage all animals would benefit from, the cost of this process means that it will be selected against whenever the investment of resources elsewhere, normally into reproduction, increases overall fitness (Bely and Nyberg, 2010; Grillo et al., 2016).

This leaves us asking many exciting questions about exactly how and why some animals are capable of extreme regenerative feats like

whole body regeneration (WBR), and others are not. For example, how do highly regenerative states, making use of both the deeply conserved components of metazoan genomes (e.g. *Wnt* signaling) but also novel lineage specific genes, evolve from less regenerative states? What are the selective pressures that maintain extravagant (and costly) regenerative feats (e.g. a dependence on asexual reproduction, the diversion of predators through autotomy, response to infection) or is enhanced regenerative ability in fact partly an emergent property of another evolutionary process (e.g. heterochronic shifts in life history)? To what extent in different taxa does regeneration recapitulate developmental mechanisms? How does regenerative capacity change within specific tissues and organs in an organism, and what evolutionary factors drive these changes? The broader (phylogenetic) and deeper (mechanistic) understanding of developmental processes, and established approaches and frameworks put in place by very successful studies of the evolution of developmental processes (EvoDevo), as well as greater experimental tractability of model systems means previously intractable questions like these can now be tackled within the context of a comparative evolutionary study of regeneration.

Similar to EvoDevo, it is only through comparative study of regeneration (or EvoRegen for short) in a number of different regenerating animal groups that allow comparisons over short and

* Corresponding author.

E-mail address: Aziz.Aboobaker@zoo.ox.ac.uk (A.A. Aboobaker).

long phylogenetic distances that these questions will be answered. As a step towards creating a framework for tackling questions in EvoRegen it seems timely to outline what we know about the evolution of adult stem cells (or other cells that might not be classed as stem cells) that drive regeneration across animals.

2. An overview of highly regenerative animal models amongst invertebrate phyla

Reconstructing the evolution of regenerative ability requires comparisons of regeneration across divergent taxa. Here, we focus on the invertebrate phyla as these include all the taxa capable of the most extreme examples of WBR. Additionally, experimental manipulations of adult invertebrates to study regeneration, with the notable exception of Cephalopoda, do not have the same ethical restrictions that are placed on vertebrate taxa. As invertebrates from deuterostome (Tunicata, Echinodermata), protostome (Spiralia, Ecdysozoa) and basal branching bilaterian (Acoelomorpha) and non-bilaterian (Cnidaria, Porifera) clades all offer tractable models for functional studies of regeneration, the evolution of regenerative mechanisms can now be compared across the whole of Metazoa. As these lineages are interspersed with species with relatively limited regenerative capacity we know that regenerative ability has increased and decreased multiple times during the radiation of metazoan phyla (Bely, 2010). For instance in the model nematode *Caenorhabditis elegans*, no regeneration events fitting the definition we suggest above are observed, but even here cell level regeneration is observed as axons are capable of regrowth after injury (Yanik et al., 2004, 2006; Chen et al., 2011). This does not involve cell division and the extent of differentiated neuron regrowth after injury exhibits considerable variation, dependent upon developmental stage, neuron type and the position of axotomy (Wu et al., 2007; Ghosh-Roy and Chisholm, 2010). Currently a number of different animals have been used in regenerative studies, and are presently at different stages of development with respect to available tools and what we know about their regenerative capacities and underlying cell biology (Figs. 1, 2). Clearly for all these groups further development is required, but the rapid progress being made means that this is the most exciting time in history to be studying regenerative biology.

One feature of the most (but not all) regenerative animals seems to be the presence of potentially pluri- and multi-potent stem cells that share similarity with extensively studied germline stem cells (GSCs) that give rise to the germline in *Drosophila*, *C. elegans* and mice (Juliano et al., 2010; Solana, 2013; van Wolfswinkel, 2014; Gehrke and Srivastava, 2016). Specifically, all these cells contain RNA/protein rich structures referred to as nuage, germ plasm or chromatoid bodies (nuGPCB) that often contain protein products of germline associated genes like *vasa*, *nanos*, *piwi*, *tudor*, *pumilio* and *bruno* family genes (Fig. 2). These electron-dense perinuclear structures are found in many different organisms, e.g. chromatoid bodies in planarians (Auladell et al., 1993; Sato et al., 2001; Solana et al., 2009; Rouhana et al., 2012, 2014), P granules in *C. elegans* (Gruidl et al., 1996; Pitt et al., 2000), polar granules in fruit flies (Hay et al., 1988, 1990; Amikura et al., 2001) and Balbiani bodies in arthropods (Kloc et al., 2014), mice oocytes (Pepling et al., 2007) and many other animal taxa (Kloc et al., 2004). Several genetic components of nuGPCB are also expressed in somatic cells such as pluripotent or multipotent cells, and this has led to the hypothesis of the existence of a Germline Multipotency Program (GMP) that is shared between the germline and these adult stem cells (Juliano et al., 2010). The most accepted shared characteristic of these cells is the expression of PIWI/piRNAs that are thought to help ensure genome stability by silencing transposons, with some of the other nuGPCB components also thought to be involved in this regulation (Weick and Miska, 2014). In summary, we can say that there is strong (but not complete) correlation between the presence of expression of GMP components in somatic stem cells and the extent of regenerative capacity and the ability to perform WBR.

One pertinent question that should now be tractable is whether these pluri- and multipotent adult stem cells have a common single origin from the germline in Metazoa or represent a series of independent derivations (Fig. 3). Recently, Solana (2013) couched this problem in terms of breaking the classical Weismann Barrier (WB) that was postulated to keep the totipotent immortal germline distinct from the soma, ensuring information only went from germ line to soma. Solana hypothesized that this event allows so called “primordial stem cells” that contain germ plasm and have the role of ensuring germline continuity, too also contribute to somatic tissues, where their presence underpins the evolution of WBR and asexual reproduction by fission. This breaking of the WB between germline and soma may have occurred ancestrally once with re-establishment in some lineages, or multiple times independently in different lineages. Alternatively, this barrier may not have existed ancestrally and could have been formed independently in different lineages.

Another way to look how regenerative ability evolves, that would include all levels of regenerative capacity, is in terms of the evolutionary changes in the cell lineages and regulatory pathways that persist in adults after development. From a totipotent zygote, many intermediate pluri- and multipotent cell states are generated but the extent to which these lineages persist in adults varies greatly as does the capacity of remaining cells to (re)access developmental regulatory pathways. This seems to be a major factor in deciding the extent of regenerative ability. Evolutionary changes to which stem cells (if any) are maintained and which regulatory pathways in different cells and tissues remain accessible in adulthood would then directly influence the extent of regenerative ability. This view would fit with the observation that many regenerative mechanisms (but not all) recapitulate those observed during development. Of course, the status of remaining cell types selected for in adult animals can in turn affect the processes occurring in embryogenesis (Fig. 3).

This simple model only addresses the evolution of regenerative potential with respect to the ability of adult cells to replace damaged or missing tissue. In addition, mechanisms to trigger regeneration, sense what is missing/damaged and ensure pattern and function is properly restored must also evolve. These other parts of the process can also evolve to become less or more efficient, causing changes in regenerative capacity.

Below we cover the major invertebrate model systems and the state of their development as experimental systems, with a focus on highlighting species where robust functional studies are or should now be possible (Alvarado and Tsonis, 2006). In doing so we also consider the progress towards answering the question of the origin and identity of the adult stem cells that fuel regeneration, and how they evolve in different animals.

3. Platyhelminthes: regeneration in Triclad planarians, *Macrostomum lignano* and beyond

Freshwater planarians are currently the most-studied individual invertebrate taxa with respect to regeneration with the use of RNAi combined with an expanding set of experimental and ‘omic approaches driving rapid progress. Planarian adult stem cells, called neoblasts, are one of the best-characterized invertebrate adult somatic stem cell systems (Aboobaker, 2011; Tanaka and Reddien, 2011; Wagner et al., 2011; Gehrke and Srivastava, 2016; Zhu and Pearson, 2016; Kao et al., 2017; Lai et al., 2017). Planarian regeneration is triggered by wound signals, which induces a change in neoblast behavior to proliferate and differentiate to replace missing tissues through which WBR can be achieved from a tiny proportion of starting adult tissue. PIWI expression neoblasts in planarians are distributed across the parenchyma (Reddien et al., 2005b), they are the only mitotically active cells in planarians, are sensitive to gamma irradiation (Bardeen and Baetjer, 1904; Reddien et al., 2005a, 2005b; Blythe et al., 2010; Önal et al., 2012; Solana et al., 2012), can be isolated by fluorescence-

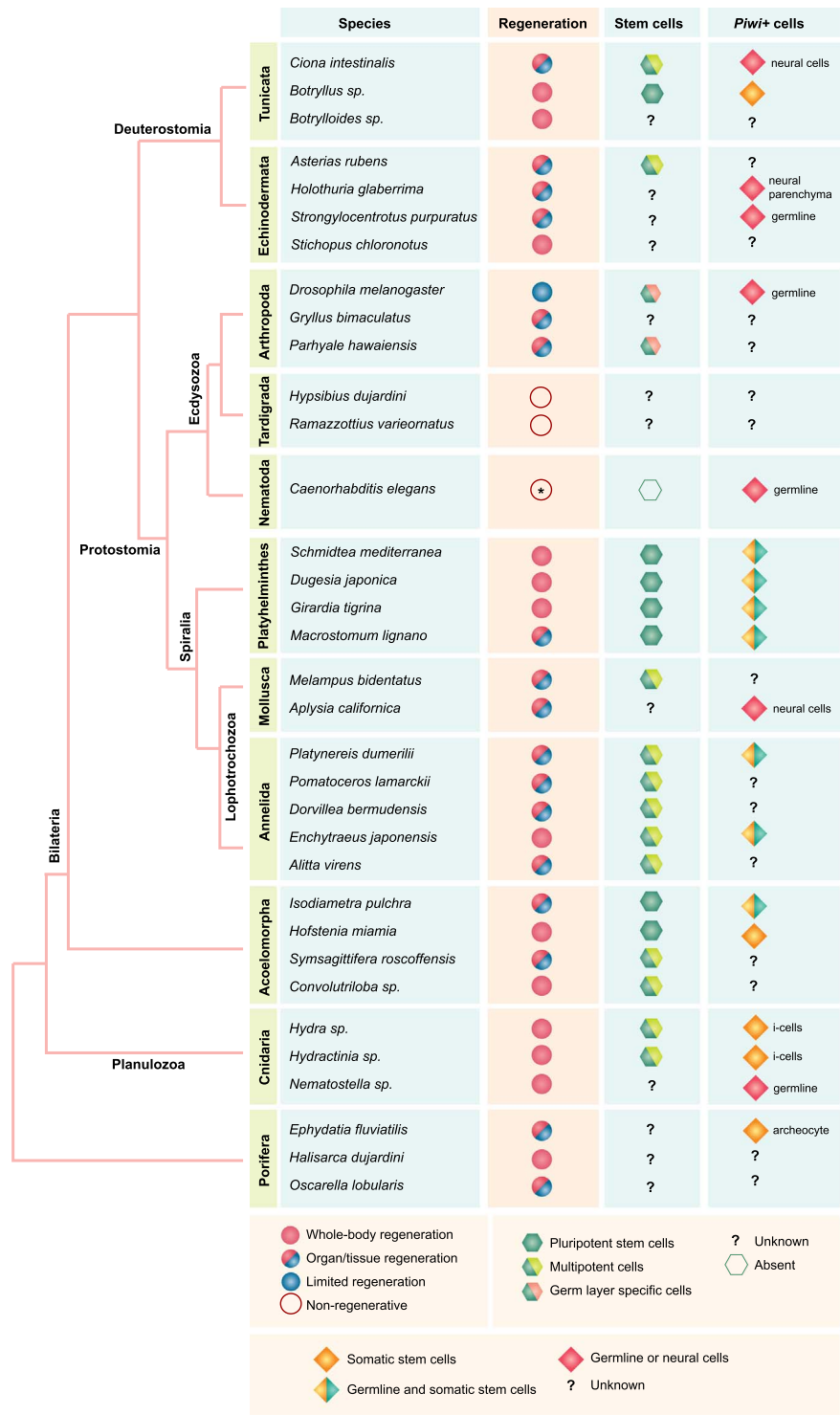


Fig. 1. Regeneration and stem cells in Metazoa. The ability to regenerate is spread through nearly all animal phyla. Some animals can perform whole body regeneration, while others can only regenerate specialized tissue types, organs or appendages. Some of the current experimental model systems representative of each phylum are depicted. Amongst regenerative animals, pluripotent stem cells or multipotent cells that can give rise to newly regenerated tissue have been identified in some lineages. Expression of the Germline Multipotency Program (GMP) gene *Piwi* in somatic stem cells and/or germline is also noted. The asterisk denotes that *C. elegans* can undergo axon regrowth as a limited form of regeneration without cell proliferation.

activated cell sorting (FACS) (Hayashi et al., 2006; Romero et al., 2012) and can be identified molecularly by a number of different markers (Newmark and Alvarado, 2000; Reddien et al., 2005b; Guo et al., 2006; Eisenhoffer et al., 2008; Wang et al., 2010; Aboobaker, 2011; Önal et al., 2012; Solana et al., 2012; Aboukhatwa and Aboobaker, 2015). Transplantation experiments performed by injecting single neoblasts into lethally irradiated hosts revealed that at least some individual

neoblasts have the ability to repopulate and replace all cell types in an animal (Wagner et al., 2011), and so can be defined as pluripotent. More recently, the development of single-cell transcriptomics has provided strong support for heterogeneity amongst the cycling stem cell population, and it is now widely acknowledged that neoblasts defined as cells positive for *smadwi-1* transcript expression (a *piwi* ortholog) include subclasses (*sigma*, *zeta* and *gamma*) expressing

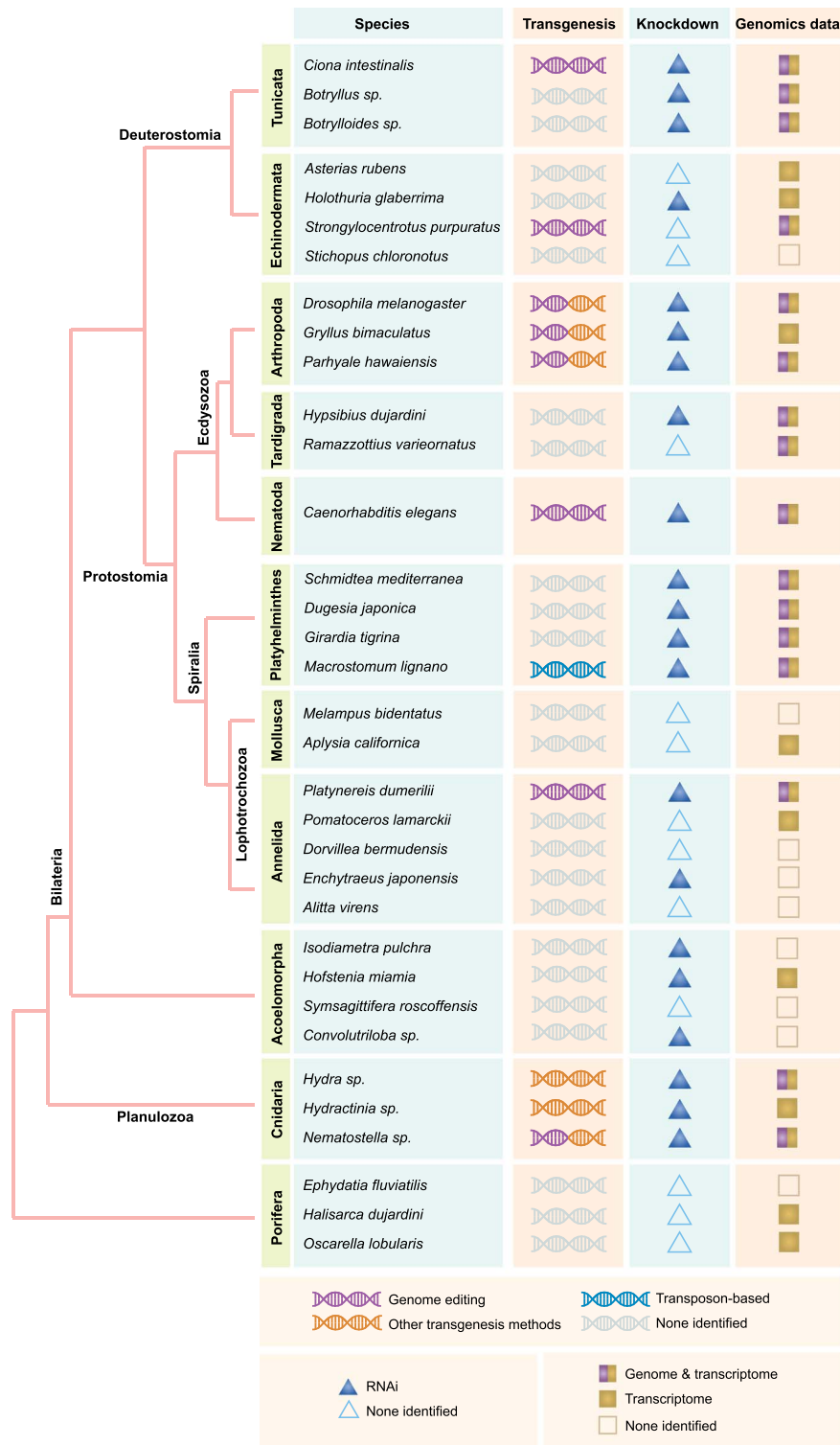


Fig. 2. Functional genomic tools for invertebrate models of regeneration. The availability of transgenesis techniques: e.g. CRISPR, TALENS, transposon-mediated or I-SceI meganuclease-mediated (in *Nematostella*), RNA interference and high-throughput sequencing datasets (genome and/or transcriptome) are indicated for some current (regeneration) models in each Phylum.

distinct transcription factors (van Wolfswinkel et al., 2014). Amongst these is the *sigma* expressing class that seems to include cells capable of self-renewal, while *Smedwi-1+ zeta* and *gamma* subclasses only pass through M-phase once before terminally differentiating (van Wolfswinkel et al., 2014; Lai et al., 2017). Significantly, a number of regulatory features of planarians stem cells seem to be conserved with mammals, suggesting they are useful model for bio-medically pertinent questions but also that many features of stem cell biology are deeply

conserved (Solana et al., 2016; Abnave et al., 2017), including epigenetic regulation (Scimone et al., 2010; Jaber-Hijazi et al., 2013; Duncan et al., 2015; Kao et al., 2017; Mihaylova et al., 2017). While many planarians are capable of WBR, there are some species where regenerative ability is reduced. These scenarios provide an opportunity to understand how differences in regenerative ability evolve, both mechanistically through, for example, changes in key signaling pathways (Liu et al., 2013; Sikes and Newmark, 2013; Umesono et al.,

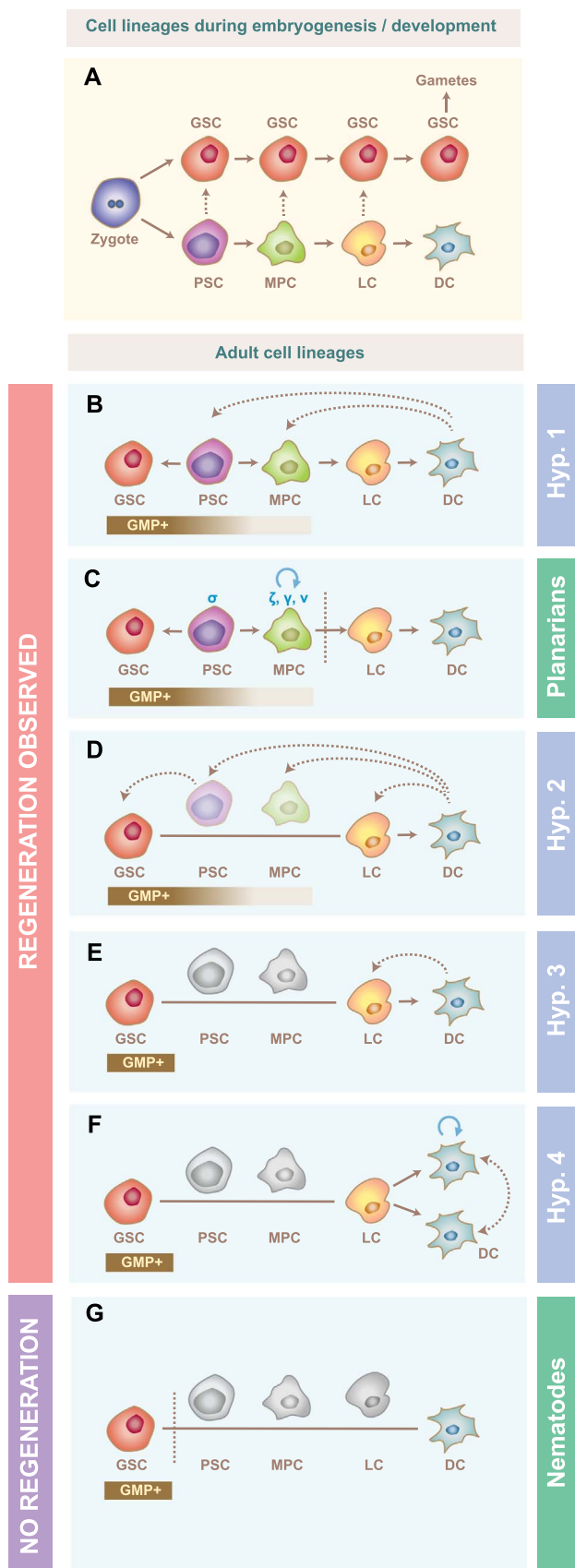


Fig. 3. Model depicting the various examples of the maintenance of different stem cell lineages into adulthood, and how this may relate to regenerative ability. (A) During embryogenesis, the totipotent zygote gives rise to intermediate pluripotent and multipotent cell stages during development. Different organisms produce the germline GSCs at different times using different mechanisms, broadly divided into preformation (early and directly descended from the zygote) and epigenesis (induced later by signaling from somatic cells). In adulthood, not only is the persistence of each cell lineage variable, the ability of existing cells to recapitulate genetic regulatory programmes active during embryogenesis would also influence the extent of regenerative ability. (B) The first hypothetical scenario illustrates extreme cell plasticity where lineages related to stem cell that arise in development are maintained in the adult, and in addition differentiated cells (DC) are capable to de-differentiate back into the multipotent or even the pluripotent state. Currently there are no clear examples known where this could be the case in the Animal Kingdom (C) A now well described example of the presence of adult pluripotent stem cells (PSC) are neoblasts in planarians. Here we propose a partially supported model and break the neoblast compartment up by gene expression heterogeneity and capacity for self-renewal into self-renewing *sigma* (σ) neoblasts (PSC) and into *zeta* (ζ), *gamma* (γ) and *nu* (ν) (MPC) which themselves arise from the *sigma* population but then are only able to pass through mitosis once to give rise to post-mitotic lineage committed progeny (LC), which differentiate into differentiated cells (DC) without further division. The perpendicular dotted line after PSCs indicates both that after this point cells are post-mitotic/incapable of self-renewal and that there is no re-entry into the cell cycle. (D) The second hypothetical scenario illustrates a situation where DCs are able to de-differentiate back into LCs, MPCs or PSCs when regeneration is induced by example for asexual reproduction or injury. However, MPCs and PSCs are only reconstituted transiently to drive regeneration and then disappear. (E) The third hypothetical scenario illustrates the capability of DCs to de-differentiate back to LCs during regeneration giving extensive regeneration ability (for example limb regeneration) but perhaps not WBR. (F) The fourth hypothetical scenario illustrates a situation where DCs could transdifferentiate into another differentiated cell type, with the circular arrows indicating the possibility that each DC lineage is able to self-renew. (G) The adult nematode possesses only GSCs and DCs. The perpendicular dotted line indicates that apart from GSCs producing gametes, the adult animal is post-mitotic. The expression of the Germline Multipotency Program (GMP) genes which correlate with stem cell pluri- and multipotency is depicted as a brown bar, with shading indicative of level/extent of expression in a cell population. Dotted arrows denote hypothetical events during a regenerative response. Solid arrows represent cell lineages. Cell lineages that are normally absent in the adult are above the line, and in grey when regulatory pathways to reconstitute them cannot be activated in the adult.

2013) and also to understand the evolutionary forces that drive and maintain these differences.

Beyond planarians, another experimental model *Macrostomum lignano* (Macrostomida) has begun to gain momentum. *M. lignano* is a transparent free-living, cross-fertilizing hermaphrodite and is only distantly related to freshwater planarians within the Platyhelminth phylogeny (Schärer and Ladurner, 2003; Laumer et al., 2015). *M. lignano* can regenerate all tissue types except its head (Egger et al., 2006; Nimeth et al., 2007) and similarly to planarians this ability is underpinned by neoblasts (Ladurner et al., 2000, 2008; Nimeth et al., 2004). Genome and transcriptome sequences of *M. lignano* are now available (Wasik et al., 2015; Grudniewska et al., 2016; Wudarski et al., 2017) and an attractive feature that sets *M. lignano* apart from planarians is that it has an accessible embryonic life history that has made it amenable to transgenesis (Marie-Orleach et al., 2014, 2016; Wudarski et al., 2017), a technology conspicuously still unavailable in planarians. While research so far has focused very much on tool development, *M. lignano* will be particularly powerful for understanding neoblast biology now that these cells and their progeny can be theoretically specifically labeled and followed in live animals.

The discovery that the parasitic platyhelminthes *Schistosoma mansoni* and *Echinococcus multilocularis* also have adult stem cells that look like the neoblasts, makes it very likely that neoblast like-cells are an ancestral character of whole the phylum (Collins et al., 2013; Brehm and Koziol, 2014; Schubert et al., 2014). While *piwi* family genes are the most studied other GMP genes like *vasa*, *bruno*, *tudor*

and *pumilio* are also expressed in flatworm neoblasts (Shibata et al., 1999, 2016; Reddien et al., 2005b; Salvetti et al., 2005; Guo et al., 2006; Rossi et al., 2006; Pfister et al., 2007; Palakodeti et al., 2008; De Mulder et al., 2009; Solana et al., 2009). The absence of GMP genes (*Piwi* and *Tudor*) in the neoblasts like cells of *S. mansoni* (Collins et al., 2013) presumably represents a loss of gene expression and, while the significance of this loss is not understood, it is a demonstration of how pluripotent adult stem cells might evolve. In this case perhaps the need for protection from transposable elements by piRNAs is no longer important. Pioneering work on difficult to access planarian embryos has shown that an early *piwi*+ but somewhat molecularly distinct cell population arises early in development and gives rise to neoblasts, after initial germ layer specification, as all organs and tissues start to form during development (Solana et al., 2009; Davies et al., 2017). These data suggest that the pluripotent neoblast population in adults may be functionally distinct from pluripotent embryonic stem cells in planarians (Davies et al., 2017).

4. Regeneration in annelids involves multipotent cell populations sharing molecular signatures with primordial germ cells

Some members of Annelida are almost as regenerative as planarians, capable of WBR within the context of their segmented body plans, which has been expertly reviewed recently (Özpolat and Bely, 2016). In fact the term neoblasts was originally used to describe large undifferentiated cells with a high nuclear to cytoplasmic ratio in the annelid *Lumbriculus* sp. (Randolph, 1891). Within Annelida, a number of taxa appear to have lost or never acquired the ability to regenerate anteriorly, but posterior regeneration has broadly been maintained (Özpolat and Bely, 2016). Both Polychaete and Oligochaete annelid species can perform whole-body regeneration as a means of asexual reproduction (Myohara et al., 1999; Bely and Wray, 2001; Paulus and Müller, 2006; Bely and Nyberg, 2010; Bely and Sikes, 2010). A wide collection of annelid species can now be cultured in the laboratory. Sexually reproducing species such as *Tubifex*, *Platynereis*, *Helobdella*, *Enchytraeus* and *Capitella* can be taken through their life cycle offering ample embryonic and adult materials while asexual species such as *Pristina*, *Stylaria*, *Lumbriculus* and *Enchytraeus* provide genetically identical clonal materials (Özpolat and Bely, 2016). The cellular basis of Annelid regeneration is rather varied including examples of differentiated cells switching on GMP gene expression during regeneration in potentially dedifferentiating cells from different germ layers and other examples, as in *Enchytraeus japonensis*, where *Piwi* expressing cells present in the adult migrate to the blastema (Tadokoro et al., 2006; Özpolat and Bely, 2016) (Fig. 3).

This potential variation in the nature of adult stem cells, in contrast to what has so far been observed in Platyhelminthes, would make annelids ideal for understanding how the source of adult stem cells during regeneration can change and effect the evolution of regenerative ability (or not). However, functional genomic studies to understand both the cellular source and expression profile of cells driving regeneration are lacking in annelids. Currently *Platynereis*, capable of posterior regeneration involving GMP expressing mesodermal and ectodermal cells, is the most advanced genetic system (Gazave et al., 2013; Bannister et al., 2014; Zantke et al., 2014), but so far the only study of gene function during regeneration has been through RNAi in *E. japonensis* (Takeo et al., 2009; Yoshida-Noro and Tochinnai, 2010).

5. Regeneration in the enigmatic worms from Acoelomorpha involves conserved GMP genes

Acoels hold the position of the earliest branching bilaterian taxa (Ruiz-Trillo et al., 1999, 2002, 2004; Telford et al., 2003; Philippe et al., 2007; Sempere et al., 2007; Hejnol et al., 2009; Mwinyi et al., 2010). Not unlike platyhelminthes, acoels too possess a neoblast stem

cell system that is thought to be collectively totipotent (Sikes and Bely, 2010). Several species within the class Acoela have emerged as important models for stem cell and regeneration research and robust molecular genetic tools have started to materialise. Good examples are *Hofstenia miamia* (Srivastava et al., 2014; Gehrke and Srivastava, 2016), *Isodiametra pulchra* (De Mulder et al., 2009; Perea-Atienza et al., 2013), *Symsagittifera roscoffensis* (Bery and Martinez, 2011; Bailly et al., 2014; Sprecher et al., 2015) and *Convolutriloba* sp. (Gaerber et al., 2007; Sikes and Bely, 2010). *H. miamia* from an early-diverging clade of acoels offers promising avenues for stem cell and regeneration research as RNAi seems effective and, like the flatworm *M. lignano* discussed above, it is possible to access embryos that should facilitate transgenic and genome editing approaches (Srivastava et al., 2014; Gehrke and Srivastava, 2016).

Neoblasts in acoels are strikingly similar to those in flatworms, with both systems sharing molecular as well as cellular signatures (Gehrke and Srivastava, 2016). As in flatworms, acoel neoblasts have been found to express GMP genes. *I. pulchra* neoblasts express *piwi* and *vasa* (De Mulder et al., 2009) and *piwi* expression was also detected in mitotically active neoblasts in *H. miamia* (Srivastava et al., 2014). Depletion of *piwi* by RNAi in *H. miamia* (Srivastava et al., 2014), but not in *I. pulchra* (De Mulder et al., 2009), resulted in impaired regeneration. Whether this indicates the presence of other *piwi* genes in *I. pulchra* or differences in efficacy of RNAi, or indeed that *I. pulchra* neoblasts do need *piwi* merits further investigation.

In addition to similarities in the neoblast population, work with *H. miamia* has uncovered that the pathways responsible for establishing axial polarity during regeneration, such as Wnt signaling, appear to share many features with those uncovered in planarians (Srivastava et al., 2014). Taken together, this supports the hypothesis that an ancestral species at the base of Bilateria may have had both pluripotent stem cells and been capable of axial regeneration using the same conserved signaling pathways. Deeper comparisons between and within Acoels, Platyhelminthes and other taxa are needed to rigorously test this hypothesis.

6. The study of limb regeneration in arthropods, sources of adult stem cells and somatic piRNAs

While regeneration amongst insects and crustaceans has been well documented and described, functional work has been limited to just a few species. In *Drosophila*, wound healing and regeneration of imaginal disc tissue, although essentially a developmental tissue has been a very useful model for investigating the response to wounding and the re-establishment of pattern (Bryant and Fraser, 1988; Diaz-Benjumea and Cohen, 1993; Tabata and Kornberg, 1994; Mattila et al., 2004; Bosch et al., 2005). The relatively recent discovery of intestinal stem cells established that *Drosophila* despite being relatively short lived has at least one population of adult stem cells (Micchelli and Perrimon, 2006; Ohlstein and Spradling, 2006, 2007; Lin et al., 2008; Amcheslavsky et al., 2009). Given the tools available in *Drosophila* it is not surprising that the understanding of how these stem cells maintain the barrier function of the midgut has progressed rapidly.

The widely studied two-spotted cricket *Gryllus bimaculatus* has become a relatively mature model for limb regeneration, dependent almost entirely on the work of Noji and coworkers (Mito and Noji, 2008). The system permits the effective use of RNAi after limb amputation allowing the effects of knockdown on regeneration to be studied specifically (Nakamura et al., 2008; Bando et al., 2009). This has allowed precise phenotypic analysis of loss of function phenotypes. Coupled with knowledge of gene expression patterns in the regenerating limb this has allowed the role of a number of conserved signaling pathways in limb regeneration to be described (Nakamura et al., 2007, 2008; Bando et al., 2009, 2013) and evidence that changes in epigenetic status are also necessary (Hamada et al., 2015). Currently, not much is known about the cellular basis or the nature of cells in the

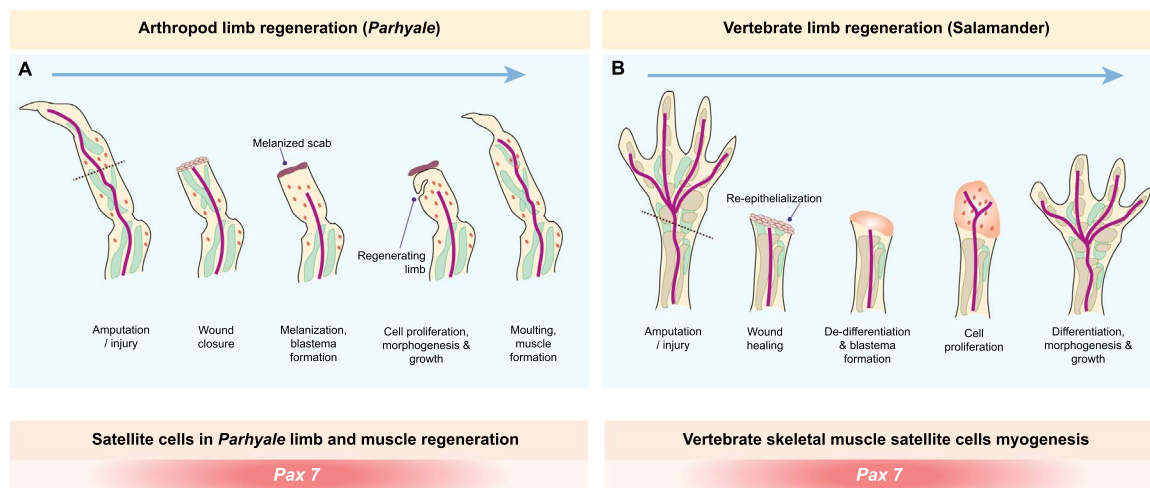


Fig. 4. Comparison between limb regeneration processes in an arthropod (*Parhyale*) and vertebrates (salamander). (A) *Parhyale* limb regeneration involves multiple phases defined by distinct genetic and cellular events; adapted from (Alwes et al., 2016). Following amputation, wound closure ensues through the formation of a melanized scab around the limb epithelium. Muscle tissues located near the distal limb stump subsequently undergo degeneration. Next, a rapid onset of cell proliferation occurs, resulting in morphogenesis and growth of the limb primordium that sits within the limb stump. The final stage of *Parhyale* limb regeneration involves the moulting process, which releases the newly regenerated limb. (B) Regeneration of the salamander limb (Morrison et al., 2006, 2010; Sandoval-Guzmán et al., 2014). Following amputation, wound closure and re-epithelialization occurs. Subsequently, cells de-differentiate to form a blastema. Cells within the blastema continue to proliferate, acquire patterning information and differentiate to regenerate a new limb. Muscle regeneration in *Parhyale* and vertebrates involves *Pax7*⁺ satellite cells. In vertebrates, satellite cells reside in a quiescent state in undamaged muscles where they express *Pax7* and *Myf5*. When muscles are damaged, quiescent satellite cells are reactivated and this is signified by the onset of *MyoD* expression in vertebrates. *Myogenin* (*MyoG*) is expressed when the cells are committed to differentiate to regenerate skeletal muscles (positive for *Mlc3f* expression). In *Parhyale*, *Pax3/7*⁺ satellite cells also represent cellular sources of regenerating muscles. From experiments using *Parhyale* reporter lines, it is thought that *Pax3/7*⁺ is followed by *MyoD* expression upon the onset of muscle formation (Konstantinides and Averof, 2014).

regenerative tissue underpinning limb regeneration in the cricket. The recent demonstration of successful genome editing in the species should help address this deficit (Watanabe et al., 2017).

Studies of the regeneration capacity of crustaceans, including startling observations like new brain neurons forming from circulating hemocytes in crayfish *Procambarus clarkii* and *Pacifastacus leniusculus* (Benton et al., 2014), have remained descriptive in the absence of a genetic system amenable to functional studies. However, the steady establishment of the amphipod crustacean *Parhyale hawaiiensis* as a powerful model system for many biological questions (Kao et al., 2016; Martin et al., 2016; Serano et al., 2016; Stamatakis and Pavlopoulos, 2016), including regeneration, has catered to this shortfall. Studies of limb regeneration have established a description of the tissue and cell level processes that occur during limb regeneration in this species (Konstantinides and Averof, 2014). Taking advantage of the lineage specific transgenes facilitated by the germ layer specific cell lineage established by the 8-cell stage of *Parhyale* embryos (Gerberding et al., 2002), it has already been shown that regeneration occurs using cells germ layer specified cells close to the wound. In addition, studies of cells in the limb belonging to the mesodermal lineage revealed the presence of small undifferentiated cells as well as differentiated muscle cells. These cells were found to express a *Pax3/7* transcription factor, a marker of muscle satellite cells that give rise to skeletal muscle and are required for muscle regeneration in vertebrates (Fig. 4). Transplantation experiments confirmed that these cells are likely to give rise to new muscle during regeneration. These findings were interpreted as suggesting that the ancestor of crustaceans and vertebrates had limbs with *Pax3/7* expressing muscle satellite cells. However, given *Pax3/7* expression labels mesoderm/muscle precursors during development across the Bilateria, it is very possible that vertebrate and arthropod lineages evolved to have *Pax3/7* muscle stem cells in adult limbs independently. This would be an example of how which embryonic stem cell states persist in the adult is key to regenerative capacity. A recent study has also shown the presence of muscle satellite cells in adult *Drosophila* wing flight muscles (Boukhatmi and Bray, 2017; Chaturvedi et al., 2017), suggesting they may be conserved across arthropods, adding weight to the argument

that the presence of these cells in adults has a deeper evolutionary origin. Overall the striking similarities in limb regeneration suggest detailed study in *Parhyale* will be very informative for understanding vertebrate limb regeneration (Konstantinides and Averof, 2014; Alwes et al., 2016; Grillo et al., 2016).

With technological advances such as the availability of fluorescent reporter lines (Pavlopoulos et al., 2009; Kontarakis et al., 2011b, 2011a; Kontarakis and Pavlopoulos, 2014; Wolff et al., 2017), CRISPR-Cas9 based genome editing (Kao et al., 2016; Martin et al., 2016; Serano et al., 2016) and live imaging techniques using transgenic lines made using these approaches (Alwes et al., 2016), *P. hawaiiensis* has emerged as a very promising model system for addressing regeneration. One limitation has been the relatively large genome size of this species, but this has been partially addressed by a well-annotated draft genome produced by the growing research community (Kao et al., 2016), that will facilitate the use of genome editing.

Available data on the cellular source of regenerative capacity from crayfish *Procambarus* and *Pacifastacus* suggests that circulating hemocytes can contribute to neural regeneration (Benton et al., 2014). In *Parhyale*, it seems resident germ layer committed precursors fuel limb regeneration. In the case of muscle at least this involves resident stem cells, while other germ layers may require dedifferentiation. Interestingly, even amongst urodelean amphibians this phenotype is variable, as both satellite cells and dedifferentiating muscle fibers re-entering the cell cycle are used in different species for muscle regeneration (Sandoval-Guzmán et al., 2014).

There is no direct evidence of the GMP gene expression in somatic cells in arthropods, suggesting this kind of adult stem cell is missing from this phylum and GMP expression is limited to the germline stem cells (GSCs) and the germline. However, this may be because nobody has looked. Recent work has found somatically expressed PIWI-interacting RNAs (piRNAs) across 20 divergent arthropod species, revealing that somatic piRNAs were likely present in the arthropod ancestor (Lewis et al., 2017). Thus it seems more than likely that somatic PIWI expression will also be present. Although *P. hawaiiensis* was not amongst those species surveyed it would be an ideal system to confirm the presence of piRNAs in somatic cells (as well as PIWI

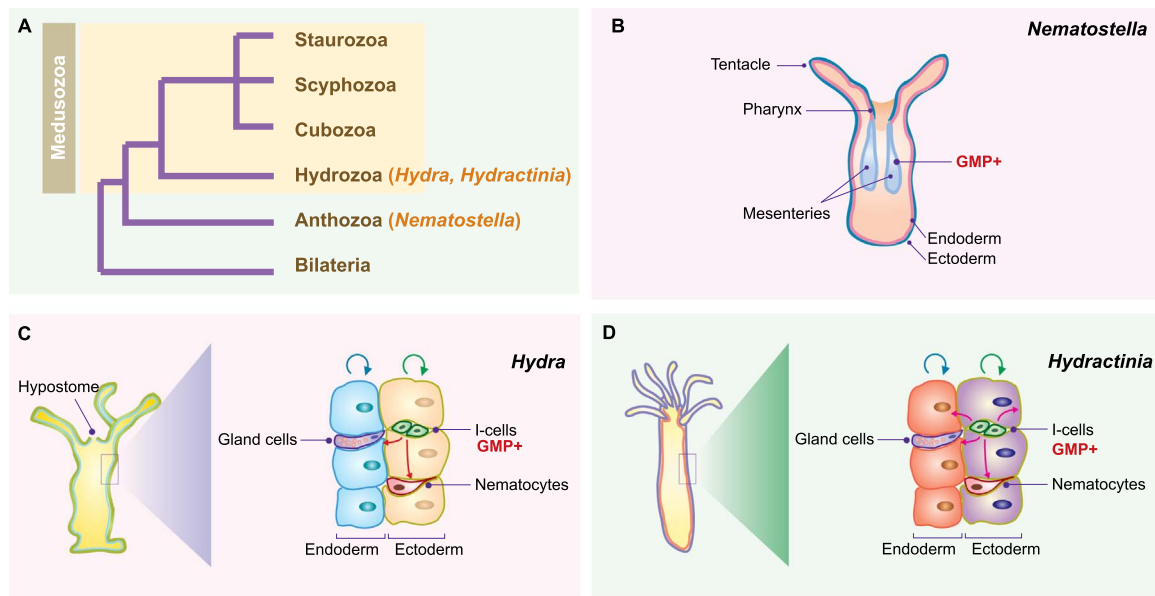


Fig. 5. Regeneration and stem cells in cnidarians. (A) The phylogeny of Cnidaria showing Anthozoa as an outgroup to Hydrozoa. The subphylum Medusozoa is indicated in a yellow box, which comprises of Hydrozoa, Scyphozoa, Staurozoa and Cubozoa. (B) The nature of *Nematostella* stem cells is not currently known. *Nematostella* has unique structures known as mesenteries, which consists of endocytes, gonads and myoepithelial cells, allowing the animal to contract along the oral-aboral axis. GMP gene expression has been detected in the mesenteries (Extavour et al., 2005; Praher et al., 2017). I-cells, located in interstitial spaces of epithelial cells, are undifferentiated cells capable of self-renewal, migration and differentiation into specialised cell types. All three cell lineages (ectoderm, endoderm and i-cells) have self-renewal capabilities. In *Hydractinia* but not in *Hydra*, i-cells can give rise to epithelial cells (ectoderm and endoderm). GMP gene expression is detected in the i-cells of *Hydractinia* (Rebscher et al., 2008; Bradshaw et al., 2015) and *Hydra* (Juliano et al., 2014). Cartoon summarising cell lineages and i-cells in hydroid cnidarians: (C) *Hydra* and (D) *Hydractinia*; adapted from (Leclère et al., 2016).

expression) and study their function in these somatic cells. The possibility that piRNAs and PIWIs are being expressed in somatic adult stem cells in arthropods is exciting and this would add further weight to the argument that these cells are an ancestral feature of metazoan adult life histories.

7. GMP expressing cells underpin regeneration in deuterostome invertebrates

The phylogenetic placement within Deuterostomia and thus potentially shared genetic machinery with chordates make echinoderms and tunicates attractive invertebrate models for studying regenerative processes from a biomedical perspective. But the sheer variety of potential models and regenerative paradigms also makes them ideal for studying the evolution of regeneration. However, studies have been hampered by complex lifecycles being refractory to laboratory culture and a lack of functional tools. This means that most molecular studies remain descriptive of changes during regeneration, particularly in echinoderms. More mechanistic studies have and should be possible, particularly in *Strongylocentrotus purpuratus*, *Lytechinus variegatus* (Reinardy et al., 2015) and *Ciona intestinalis* where both excellent genomes and functional genomic tools are available, partly due to their long history as developmental models. Two closely related genera of colonial ascidians, *Botryllus* sp. (Voskoboinik and Weissman, 2015) and *Botrylloides* sp. (Rinkevich et al., 2007; Brown et al., 2009) are also very promising systems (Kassmer et al., 2016). Successful RNAi and transcriptomic data were also recently reported in the holothuroid sea cucumber *Holothuria glaberrima* (Mashanov et al., 2014, 2015b), in which pioneering work has developed this species as a standout model amongst this group, that is able eviscerate as a form of autotomy and then regenerate the entire complex gut (García-Arrarás et al., 1998; García-Arrarás and Greenberg, 2001; San Miguel-Ruiz and García-Arrarás, 2007). This species can also regenerate the central nervous system (Mashanov et al., 2013).

Regeneration in echinoderms is not only used for asexual reproduction, but also serves as a survival mechanism against physical damage, partial predation, and escape from predators. Regeneration is

present throughout at the most basal class, Crinoidea (sea lilies) (Carnevali et al., 1997; Candia Carnevali et al., 1998; Thorndyke et al., 2001; Patruno et al., 2003), suggesting that this is an ancestral trait of all extant echinoderms represented by four additional classes: Asteroidea (sea stars), Ophiuroidea (brittle stars), Holothuroidea (sea cucumbers) and Echinoidea (sea urchins). The mechanisms of regeneration can vary between different echinoderm species, where some could undergo bi-directional regeneration (a bisected animal can regenerate two complete animals) while others only regenerate unidirectionally (only one half of a bisected animal can regenerate). Bi-directional regeneration via spontaneous fission in adults allows some ophiuroid, asteroid and holothuroid species to reproduce asexually (Emson, 1980; Mazzone et al., 2003; McGovern, 2003; Rubilar et al., 2005). Holothuroids also have the striking ability to eviscerate as a form of autotomy, where the viscera is expelled wholesale to defend against predators, subsequently followed by complete gut regeneration (Smith and Greenberg, 1973; Byrne, 1985; García-Arrarás et al., 1999). On the contrary, amongst all echinoderm classes, sea urchins in the adult form have the most limited ability to regenerate and most could only replace their pedicellariae or spines (Heatfield and Travis, 1975; Drager et al., 1989; Dubois and Ameye, 2001). This is consistent with the more established model organisms that have proved to be powerful developmental study systems being relatively poor for studying regeneration.

As the closest living relatives of vertebrates (Bourlat et al., 2006), marine ascidians (sea squirts) occupying a basal position in Chordata, offer ample opportunities for research on stem cell biology, regeneration and development. Ascidians have two distinct adult body plans, solitary and colonial. Colonial ascidians such as *Botryllus* (Watkins, 1958; Laird and Weissman, 2004; Voskoboinik et al., 2013), *Perophora* (Goldin, 1948; Berrill, 1951; Freeman, 1964) and *Botrylloides* (Hirose et al., 1995; Rinkevich et al., 2007; Brown et al., 2009) reproduce asexually and therefore can undergo whole-body regeneration (Berrill, 1951; Tiozzo et al., 2008; Brown and Swalla, 2012). On the contrary, solitary ascidians like *Ciona intestinalis* and those that only reproduce sexually can only regenerate to replace specific body parts, which is somewhat limited compared to colonial

species. The transition between colonial and solitary life histories may have evolved multiple times independently since both forms are present across all three ascidian suborders (Phlebobranchia, Aplousobranchia, Stolidobranchia) (Zeng et al., 2006).

Research on *Ciona* regeneration dates back to the early 20th century where historical evidence from earlier studies has demonstrated that *Ciona* can regenerate its central nervous system, tunic and gonad (Sutton, 1953). With the availability of a complete draft genome (Dehal et al., 2002), transgenesis techniques (Awazu et al., 2007; Sasakura, 2007; Sasaki et al., 2014; Stolfi et al., 2014) and improvements in laboratory husbandry (Joly et al., 2007), *C. intestinalis* has become one of the most widely studied ascidians. Brain and nervous system regeneration is now one of the primary focuses of research in *Ciona* since complete central nervous system (CNS) regeneration is uncommon in most adult chordates. *Ciona* can regenerate an entire neural complex (NC) over the course of a month (Bollner et al., 1992, 1997) and with stereomicroscopy analysis and live-imaging techniques, the kinetics of nerve restoration in *Ciona* can now be studied (Dahlberg et al., 2009). Intriguingly, the regenerated NC in *Ciona* is significantly smaller than the original NC, which raises the question as to whether this new cerebral ganglion has retained its original level of function (Bollner et al., 1992, 1997; Dahlberg et al., 2009).

The source of stem cells for regeneration includes both circulating and tissue resident stem cells in echinoderms (Thorndyke et al., 2001; Carnevali, 2006; Candia-Carnevali et al., 2009). In *H. glaberrima*, *piwi* transcript is expressed in cells that likely contribute to CNS regeneration and in cells in the neural parenchyma, which may therefore be GMP expressing stem cells (Mashanov et al., 2015a). Data for somatic expression of *Piwi* in other echinoderms is currently lacking. GMP gene expression is well established in somatic stem cells in colonial ascidians. In *Botryllodes leachii* and *Botryllus schlosseri* *piwi* + cells are present on the luminal side of the vascular endothelium and endostyle niche respectively (Rinkevich et al., 2010, 2013). In *B. leachii* upon wounding/damage seemingly dormant stem cells in the vasculature, they change morphology, switch on *piwi* expression, mobilize proliferate and differentiate to allow regeneration (Rinkevich et al., 2010). Knockdown of *piwi* by siRNAi treatment prevents WBR (Rinkevich et al., 2010). Overall observation of *piwi*+ cells during regeneration in the sea cucumber and ascidians provides strong evidence they are necessary CNS regeneration, WBR and asexual reproduction by regeneration and confirms that GMP expressing adult stem cells also contribute to regeneration in Deuterostomes.

8. Stem cell systems in basal metazoans express GMP genes

The phyla Cnidaria and Porifera represent valuable early branching lineages providing key data for understanding the evolution of regenerative ability in metazoans. Cnidaria are divided into five classes; Hydrozoa, Anthozoa, Cubozoa, Staurozoa and Scyphozoa (Fig. 5) (Steele et al., 2011), and are well known for their remarkable life history in which they display phenotypic plasticity and extreme regenerative capacity (Holstein et al., 2003; Lengfeld et al., 2009; Steele et al., 2011; Gold and Jacobs, 2013; Petersen et al., 2015; Leclère et al., 2016). The main cnidarian model systems, which are *Hydra* (Gierer et al., 1972; Bosch and David, 1987; Bosch, 2007; Chapman et al., 2010), *Nematostella* (Darling et al., 2005; Reitzel et al., 2007; Burton and Finnerty, 2009) and *Hydractinia* (Toth, 1967; Duffy et al., 2010; Plickert et al., 2012; Bradshaw et al., 2015; Gahan et al., 2016) have already contributed to our broad understanding of regenerative mechanisms, and comparison between them provides an opportunity to study changes in regeneration at a macro-evolutionary scale over which homology of much adult morphology, tissues and cell types can be assigned.

Regeneration in the hydrozoans, *Hydra* and *Hydractinia*, involves three stem cell systems: endodermal epithelial stem cells, ectodermal epithelial stem cells and most widely studied cells (i-cells) (Fig. 2). The two

epithelial cell systems are specific for replacing cells from the endodermal and ectodermal lineages (Leclère et al., 2016). I-cells, made up of pluripotent or multipotent cells express both GMP genes (*Piwi*, *Vasa* and *Nanos*) as well as genes known to be responsible for pluripotency maintenance such as *Polynem* (POU-domain) and *Sox*-family transcription factors (Rebscher et al., 2008; Jager et al., 2011; Millane et al., 2011; Hemmrich et al., 2012; Leclère et al., 2012; Kanska and Frank, 2013; Bradshaw et al., 2015) (Fig. 5). *Piwi* is expressed in the i-cells of *Hydra* (Juliano et al., 2014; Lim et al., 2014) and *Hydractinia* (Plickert et al., 2012) while *Cniwi* is expressed in the germline of another species from the Hydractiniidae family, *Podocoryne carnea* (Seipel et al., 2003). I-cells in *Hydra* give rise to distinct lineages such as germ cells and neurons (David and Murphy, 1977; Sugiyama and Fujisawa, 1978; Bosch and David, 1987; Siebert et al., 2008; David, 2012; Buzgariu et al., 2014) whereas in *Hydractinia*, i-cells collectively regenerate both somatic and germ lineages, including the ectoderm and endoderm (Müller et al., 2004; Duffy et al., 2010; Gahan et al., 2016), so can be considered to be truly pluripotent. Gene expression profiling has revealed that the molecular signatures of i-cells in *Hydra* as defined by morphology, are highly heterogeneous and include sub-populations expressing lineage specific markers (Holstein and David, 1986; Hager and David, 1997), and a distinct sub-population entirely committed to producing germ cells (Littlefield, 1991; Nishimiya-Fujisawa and Sugiyama, 1993).

Although the exact nature of adult stem cells is not currently known in *Nematostella*, piRNA pathway components were enriched in both the germline and somatic cells (Praher et al., 2017), implying the existence of putative adult stem cell populations potentially underpinning regeneration in this species. Injury in *Nematostella* activates a quiescent population of mitotic stem cells adjacent to the wound site (Passamaneck and Martindale, 2012) and oral regeneration involves the canonical *Wnt* signaling pathway in primary oral-aboral (O-A) axis patterning (Trevino et al., 2011). The inhibition of B-catenin degradation through alsterpaullone treatment results in ectopic regeneration of the oral pole (Trevino et al., 2011). *Wnt* signaling in axial regeneration is also implicated in both *Hydractinia* (Teo et al., 2006; Duffy et al., 2010) and *Hydra* (Hobmayer et al., 2000; Broun et al., 2005; Guder et al., 2006; Lengfeld et al., 2009).

Data from Porifera, the other basal animal lineage, show that *Piwi* is also expressed in the archeocytes of sponges that can give rise to both germ and somatic cells (Funayama et al., 2010). *Piwi* is also expressed in mitotically active cells in the tentacles of the hydrozoan *Clytia hemisphaerica* (Denker et al., 2008) and in the ctenophore *Pleurobrachia pileus* (Alié et al., 2011). These data imply that GMP expressing pluri- and multipotent adult stem cells are present in most non-bilaterian taxa, suggesting they are an ancestral feature of metazoan.

9. Conclusions

The rise of experimentally tractable invertebrate models for regeneration offers unprecedented insights into deciphering fundamental questions in the evolution of genetic and cellular components of regeneration that was not previously possible with most traditional animal models. In order to understand how regeneration evolved there is now an increasing need for understanding environmental and ecological conditions that can lead to the evolution of regenerative ability, and in each case how regeneration is adaptive. It seems likely that a high regenerative ability is an ancestral trait of the Metazoa and this was dependent on the presence of adult stem cells that have many features in common with totipotent GSCs. Molecular comparison of these adult stem cells suggests they are related (Alié et al., 2015), but as they likely all share a GSC origin, this is not necessarily conclusive evidence that they arose once in evolutionary history. Answering this question will require deeper comparisons of mechanisms regulating pluripotency. While this high regenerative ability has been subse-

quently lost in some taxa is not yet clear whether, once lost, WBR can re-evolve, although many lineages have specific innovations that allow high regenerative capacity of individual organs and tissues (Mount et al., 2006; Li et al., 2007; Kierdorf et al., 2009; Seifert et al., 2012; Szabó and Ferrier, 2014).

We propose that one useful way to proceed is to consider the evolution of the adult cell types that remain after development as a target of selective forces that might decide resource allocation between somatic tissues and the germline (Fig. 3). While this will not be the only selective force it is likely to be a major influence across most taxa. At one extreme, highly regenerative animals with potentially immortal soma, like *Hydra* and planarians, will maintain pluripotent animals stem cells. Or in their absence we predict that in some animals committed cells will have the potential to naturally access regulatory pathways that allow potency to be restored *de novo*. At the other extreme, animals adapted to have short explosive reproductive cycles may do away with the cost of adult stem cells to remain competitive, with the nematode *C. elegans* perhaps being the best example of this (Fig. 3).

In the near future, we can now take advantage of new genomic approaches that do not respect the traditional model organism barriers to understand regeneration and how it evolves. While several technical challenges regarding functional studies remain in many taxa, the importance of the questions merit continued investment.

Funding acknowledgement

A.G.L. is funded by a Human Frontier Science Program Fellowship and the Elizabeth Hannah Jenkinson Fund. This work was supported by the Medical Research Council (Grant number MR/M000133/1) and the Biotechnology and Biological Sciences Research Council (Grant number BB/K007564/1) awarded to A.A.A.

References

- Abnave, P., Aboukhatwa, E., Kosaka, N., Thompson, J., Hill, M.A., Aboobaker, A.A., 2017. An X-ray shielded irradiation assay reveals EMT transcription factors control pluripotent adult stem cell migration in vivo in planarians. *Development* dev-154971.
- Aboobaker, A.A., 2011. Planarian stem cells: a simple paradigm for regeneration. *Trends Cell Biol.* 21, 304–311.
- Aboukhatwa, E., Aboobaker, A., 2015. An Introduction to Planarians and Their Stem Cells. Wiley, New York. <http://dx.doi.org/10.1002/9780470015902.a0001097.pub2>.
- Alié, A., Hayashi, T., Sugimura, I., Manuel, M., Sugano, W., Mano, A., Satoh, N., Agata, K., Funayama, N., 2015. The ancestral gene repertoire of animal stem cells. *Proc. Natl. Acad. Sci. USA* 112, E7093–E7100.
- Alié, A., Leclère, L., Jager, M., Dayraud, C., Chang, P., Le Guyader, H., Quéinnec, E., Manuel, M., 2011. Somatic stem cells express Piv1 and Vasa genes in an adult ctenophore: ancient association of “germline genes” with stemness. *Dev. Biol.* 350, 183–197.
- Alvarado, A.S., Tsonis, P.A., 2006. Bridging the regeneration gap: genetic insights from diverse animal models. *Nat. Rev. Genet.* 7, 873.
- Alwes, F., Enjolras, C., Averof, M., 2016. Live imaging reveals the progenitors and cell dynamics of limb regeneration. *Elife* 5, e19766.
- Amcheslavsky, A., Jiang, J., Ip, Y.T., 2009. Tissue damage-induced intestinal stem cell division in *Drosophila*. *Cell Stem Cell* 4, 49–61.
- Amikura, R., Hanyu, K., Kashikawa, M., Kobayashi, S., 2001. Tudor protein is essential for the localization of mitochondrial RNAs in polar granules of *Drosophila* embryos. *Mech. Dev.* 107, 97–104.
- Auladell, C., Garcia-Valero, J., Bagnà, J., 1993. Ultrastructural localization of RNA in the chromatoid bodies of undifferentiated cells (neoblasts) in planarians by the RNase–gold complex technique. *J. Morphol.* 216, 319–326.
- Awazu, S., Matsuo, T., Inaba, K., Satoh, N., Sasakura, Y., 2007. High-throughput enhancer trap by remobilization of transposon Minos in *Ciona intestinalis*. *Genesis* 45, 307–317.
- Bailly, X., Laguerre, L., Correc, G., Dupont, S., Kurth, T., Pfannkuchen, A., Entzeroth, R., Probert, I., Vinogradov, S., Lechaue, C., et al., 2014. The chimerical and multifaceted marine acol *Syngasteria roscoffensis*: from photosymbiosis to brain regeneration. *Front. Microbiol.*, 5.
- Bando, T., Ishimaru, Y., Kida, T., Hamada, Y., Matsuoka, Y., Nakamura, T., Ohuchi, H., Noji, S., Mito, T., 2013. Analysis of RNA-Seq data reveals involvement of JAK/STAT signalling during leg regeneration in the cricket *Gryllus bimaculatus*. *Development* 140, 959–964.
- Bando, T., Mito, T., Maeda, Y., Nakamura, T., Ito, F., Watanabe, T., Ohuchi, H., Noji, S., 2009. Regulation of leg size and shape by the Dachous/Fat signalling pathway during regeneration. *Development* 136, 2235–2245.
- Bannister, S., Antonova, O., Polo, A., Lohs, C., Hallay, N., Valinciute, A., Raible, F., Tessmar-Raible, K., 2014. TALENs mediate efficient and heritable mutation of endogenous genes in the marine annelid *Platynereis dumerilii*. *Genetics* 197, 77–89.
- Bardeen, C.R., Baetjer, F.H., 1904. The inhibitive action of the Roentgen rays on regeneration in planarians. *J. Exp. Zool. Part A Ecol. Genet. Physiol.* 1, 191–195.
- Bely, A.E., 2010. Evolutionary loss of animal regeneration: pattern and process. *Integr. Comp. Biol.* 50, 515–527.
- Bely, A.E., Nyberg, K.G., 2010. Evolution of animal regeneration: re-emergence of a field. *Trends Ecol. Evol.* 25, 161–170.
- Bely, A.E., Sikes, J.M., 2010. Latent regeneration abilities persist following recent evolutionary loss in asexual annelids. *Proc. Natl. Acad. Sci. USA* 107, 1464–1469.
- Bely, A.E., Wray, G.A., 2001. Evolution of regeneration and fission in annelids: insights from engrailed-and orthodenticle-class gene expression. *Development* 128, 2781–2791.
- Benton, J.L., Kery, R., Li, J., Noonin, C., Söderhäll, I., Beltz, B.S., 2014. Cells from the immune system generate adult-born neurons in crayfish. *Dev. Cell* 30, 322–333.
- Berrill, N.J., 1951. Regeneration and budding in tunicates. *Biol. Rev.* 26, 456–475.
- Bery, A., Martinez, P., 2011. Acetylcholinesterase activity in the developing and regenerating nervous system of the acol *Syngasteria roscoffensis*. *Acta Zool.* 92, 383–392.
- Blythe, M.J., Kao, D., Malla, S., Rowsell, J., Wilson, R., Evans, D., Aboobaker, A.A., 2010. A dual platform approach to transcript discovery for the planarian *Schmidtea mediterranea* to establish RNAseq for stem cell and regeneration biology. *PLoS One* 5 (12), e15617.
- Bollner, T., Beesley, P.W., Thorndyke, M.C., 1992. Pattern of substance P- and cholecystokinin-like immunoreactivity during regeneration of the neural complex in the ascidian *Ciona intestinalis*. *J. Comp. Neurol.* 325, 572–580.
- Bollner, T., Beesley, P.W., Thorndyke, M.C., 1997. Investigation of the contribution from peripheral GnRH-like immunoreactive “neuroblasts” to the regenerating central nervous system in the protochordate *Ciona intestinalis*. *Proc. R. Soc. Lond. B Biol. Sci.* 264, 1117–1123.
- Bosch, M., Serras, F., Mart’/in-Blanco, E., Bagnà, J., 2005. JNK signaling pathway required for wound healing in regenerating *Drosophila* wing imaginal discs. *Dev. Biol.* 280, 73–86.
- Bosch, T.C.G., 2007. Why polyps regenerate and we don’t: towards a cellular and molecular framework for *Hydra* regeneration. *Dev. Biol.* 303, 421–433.
- Bosch, T.C.G., David, C.N., 1987. Stem cells of *Hydra magnipapillata* can differentiate into somatic cells and germ line cells. *Dev. Biol.* 121, 182–191.
- Boukhatmi, H., Bray, S., 2017. A population of adult satellite-like cells in *Drosophila* is maintained through a switch in RNA-isoforms. *bioRxiv*, 174151.
- Bourlat, S.J., Juliusdottir, T., Lowe, C.J., Freeman, R., Aronowicz, J., Kirschner, M., Lander, E.S., Thorndyke, M., Nakano, H., Kohn, A.B., et al., 2006. Deuterostome phylogeny reveals monophyletic chordates and the new phylum Xenoturbellida. *Nature* 444, 85.
- Bradshaw, B., Thompson, K., Frank, U., 2015. Distinct mechanisms underlie oral vs aboral regeneration in the cnidarian *Hydractinia echinata*. *Elife* 4, e05506.
- Brehm, K., Koziol, U., 2014. On the importance of targeting parasite stem cells in anti-echinococcosis drug development. *Parasite*, 21.
- Broun, M., Gee, L., Reinhardt, B., Bode, H.R., 2005. Formation of the head organizer in *Hydra* involves the canonical Wnt pathway. *Development* 132, 2907–2916.
- Brown, F.D., Keeling, E.L., Le, A.D., Swalla, B.J., 2009. Whole body regeneration in a colonial ascidian, *Botrylloides violaceus*. *J. Exp. Zool. Part B Mol. Dev. Evol.* 312, 885–900.
- Brown, F.D., Swalla, B.J., 2012. Evolution and development of budding by stem cells: ascidian coloniality as a case study. *Dev. Biol.* 369, 151–162.
- Bryant, P.J., Fraser, S.E., 1988. Wound healing, cell communication, and DNA synthesis during imaginal disc regeneration in *Drosophila*. *Dev. Biol.* 127, 197–208.
- Burton, P.M., Finnerty, J.R., 2009. Conserved and novel gene expression between regeneration and asexual fission in *Nematostella vectensis*. *Dev. Genes Evol.* 219, 79–87.
- Buzgariu, W., Crescenzi, M., Galliot, B., 2014. Robust G2 pausing of adult stem cells in *Hydra*. *Differentiation* 87, 83–99.
- Byrne, M., 1985. Evisceration behaviour and the seasonal incidence of evisceration in the holothurian *Eupentacta quinquevittata* (Selenka). *Ophelia* 24, 75–90.
- Candia-Carnevali, M.D., Thorndyke, M.C., Matranga, V., 2009. Regenerating Echinoderms: A Promise to Understand Stem Cells Potential (Stem cells in marine organisms). Springer, 165–186.
- Candia-Carnevali, M.D., Bonasoro, F., Patrino, M., Thorndyke, M.C., 1998. Cellular and molecular mechanisms of arm regeneration in crinoid echinoderms: the potential of arm explants. *Dev. Genes Evol.* 208, 421–430.
- Carnevali, M.D.C., 2006. Regeneration in echinoderms: repair, regrowth, cloning. *Invertebr. Surviv. J.* 3, 64–76.
- Carnevali, M.D.C., Bonasoro, F., Biale, A., 1997. Pattern of bromodeoxyuridine incorporation in the advanced stages of arm regeneration in the feather star *Antedon mediterranea*. *Cell Tissue Res.* 289, 363–374.
- Chapman, J.A., Kirkness, E.F., Simakov, O., Hampson, S.E., Mitros, T., Weinmaier, T., Rattei, T., Balasubramanian, P.G., Borman, J., Busam, D., et al., 2010. The dynamic genome of *Hydra*. *Nature* 464, 592–596.
- Chaturvedi, D., Reichert, H., Gunage, R., VijayRaghavan, K., 2017. Identification and functional characterization of muscle satellite cells in *Drosophila*. *bioRxiv*, 378388.
- Chen, L., Wang, Z., Ghosh-Roy, A., Hubert, T., Yan, D., O’Rourke, S., Bowerman, B., Wu, Z., Jin, Y., Chisholm, A.D., 2011. Axon regeneration pathways identified by systematic genetic screening in *C. elegans*. *Neuron* 71, 1043–1057.

- Collins, J.J., III, Wang, B., Lambrus, B.G., Tharp, M., Iyer, H., Newmark, P.A., 2013. Adult somatic stem cells in the human parasite, *Schistosoma mansoni*. *Nature* 494, 476.
- Dahlberg, C., Auger, H., Dupont, S., Sasakura, Y., Thorndyke, M., Joly, J.-S., 2009. Refining the Ciona intestinalis model of central nervous system regeneration. *PLoS One* 4, e4458.
- Darling, J.A., Reitzel, A.R., Burton, P.M., Mazza, M.E., Ryan, J.F., Sullivan, J.C., Finnerty, J.R., 2005. Rising starlet: the starlet sea anemone, *Nematostella vectensis*. *Bioessays* 27, 211–221.
- David, C.N., 2012. Interstitial stem cells in Hydra: multipotency and decision-making. *Int. J. Dev. Biol.* 56, 489–497.
- David, C.N., Murphy, S., 1977. Characterization of interstitial stem cells in hydra by cloning. *Dev. Biol.* 58, 372–383.
- Davies, E.L., Lei, K., Seidel, C.W., Kroesen, A.E., McKinney, S.A., Guo, L., Robb, S.M.C., Ross, E.J., Gotting, K., Alvarado, A.S., 2017. Embryonic origin of adult stem cells required for tissue homeostasis and regeneration. *Elife*, 6.
- Dehal, P., Satou, Y., Campbell, R.K., Chapman, J., Degnan, B., De Tomaso, A., Davidson, B., Di Gregorio, A., Gelpke, M., Goodstein, D.M., et al., 2002. The draft genome of *Ciona intestinalis*: insights into chordate and vertebrate origins. *Science* 80 (298), 2157–2167.
- Denker, E., Manuel, M., Leclère, L., Le Guyader, H., Rabet, N., 2008. Ordered progression of nematogenesis from stem cells through differentiation stages in the tentacle bulb of *Clytia hemisphaerica* (Hydrozoa, Cnidaria). *Dev. Biol.* 315, 99–113.
- Diaz-Benjumea, F.J., Cohen, S.M., 1993. Interaction between dorsal and ventral cells in the imaginal disc directs wing development in *Drosophila*. *Cell* 75, 741–752.
- Drager, B.J., Harkey, M.A., Iwata, M., Whiteley, A.H., 1989. The expression of embryonic primary mesenchyme genes of the sea urchin, *Strongylocentrotus purpuratus*, in the adult skeletogenic tissues of this and other species of echinoderms. *Dev. Biol.* 133, 14–23.
- Dubois, P., Ameye, L., 2001. Regeneration of spines and pedicellariae in echinoderms: a review. *Microsc. Res. Tech.* 55, 427–437.
- Duffy, D.J., Plickert, G., Kuenzel, T., Tilmann, W., Frank, U., 2010. Wnt signaling promotes oral but suppresses aboral structures in *Hydractinia* metamorphosis and regeneration. *Development* 137, 3057–3066.
- Duncan, E.M., Chitsazan, A.D., Seidel, C.W., Alvarado, A.S., 2015. Set1 and MLL1/2 target distinct sets of functionally different genomic loci in vivo. *Cell Rep.* 13, 2741–2755.
- Egger, B., Ladurner, P., Nimeth, K., Gschwentner, R., Rieger, R., 2006. The regeneration capacity of the flatworm *Macrostomum lignano*—on repeated regeneration, rejuvenation, and the minimal size needed for regeneration. *Dev. Genes Evol.* 216, 565–577.
- Eisenhoffer, G.T., Kang, H., Alvarado, A.S., 2008. Molecular analysis of stem cells and their descendants during cell turnover and regeneration in the planarian *Schmidtea mediterranea*. *Cell Stem Cell* 3, 327–339.
- Emsom, R.H., 1980. Fission and autotomy in echinoderms. *Oceanogr. Mar. Biol. Annu. Rev.* 18, 155–250.
- Extavour, C.G., Pang, K., Matus, D.Q., Martindale, M.Q., 2005. Vasa and nanos expression patterns in a sea anemone and the evolution of bilaterian germ cell specification mechanisms. *Evol. Dev.* 7, 201–215.
- Freeman, G., 1964. The role of blood cells in the process of asexual reproduction in the tunicate *Perophora viridis*. *J. Exp. Zool. Part A Ecol. Genet. Physiol.* 156, 157–183.
- Funayama, N., Nakatsukasa, M., Mohri, K., Masuda, Y., Agata, K., 2010. Piwi expression in archeocytes and choanocytes in demosponges: insights into the stem cell system in demosponges. *Evol. Dev.* 12, 275–287.
- Gaerber, C.W., Salvenmoser, W., Rieger, R.M., Gschwentner, R., 2007. The nervous system of *Convolutriloa* (Acoela) and its patterning during regeneration after asexual reproduction. *Zoomorphology* 126, 73–87.
- Gahan, J.M., Bradshaw, B., Flici, H., Frank, U., 2016. The interstitial stem cells in *Hydractinia* and their role in regeneration. *Curr. Opin. Genet. Dev.* 40, 65–73.
- García-Ararrás, J.E., D'iaz-Miranda, L., Torres, I.I., File, S., Jiménez, L.B., Rivera-Bermudez, K., Arroyo, E.J., Cruz, W., 1999. Regeneration of the enteric nervous system in the sea cucumber *Holothuria glaberrima*. *J. Comp. Neurol.* 406, 461–475.
- García-Ararrás, J.E., Estrada-Rodgers, L., Santiago, R., Torres, I.I., D'iaz-Miranda, L., Torres-Avillán, I., 1998. Cellular mechanisms of intestine regeneration in the sea cucumber, *Holothuria glaberrima* Selenka (Holothuroidea: Echinodermata). *J. Exp. Zool. Part A Ecol. Genet. Physiol.* 281, 288–304.
- García-Ararrás, J.E., Greenberg, M.J., 2001. Visceral regeneration in holothurians. *Microsc. Res. Tech.* 55, 438–451.
- Gazave, E., Béhague, J., Laplane, L., Guillou, A., Préau, L., Demilly, A., Balavoine, G., Vervoort, M., 2013. Posterior elongation in the annelid *Platynereis dumerilii* involves stem cells molecularly related to primordial germ cells. *Dev. Biol.* 382, 246–267.
- Gehrke, A.R., Srivastava, M., 2016. Neoblasts and the evolution of whole-body regeneration. *Curr. Opin. Genet. Dev.* 40, 131–137.
- Gerberding, M., Browne, W.E., Patel, N.H., 2002. Cell lineage analysis of the amphipod crustacean *Parhyale hawaiiensis* reveals an early restriction of cell fates. *Development* 129 (24), 5789–5801.
- Ghosh-Roy, A., Chisholm, A.D., 2010. *Caenorhabditis elegans*: a new model organism for studies of axon regeneration. *Dev. Dyn.* 239, 1460–1464.
- Gierer, A., Berking, S., Bode, H., David, C.N., Flick, K., Hansmann, G., Schaller, C.H., Trenkner, E., 1972. Regeneration of hydra from reaggregated cells. *Nat./New Biol.* 98–101.
- Gold, D.A., Jacobs, D.K., 2013. Stem cell dynamics in Cnidaria: are there unifying principles? *Dev. Genes Evol.* 223, 53–66.
- Goldin, A., 1948. Regeneration in *Perophora viridis*. *Biol. Bull.* 94, 184–193.
- Grillo, M., Konstantinides, N., Averof, M., 2016. Old questions, new models: unraveling complex organ regeneration with new experimental approaches. *Curr. Opin. Genet. Dev.* 40, 23–31.
- Grudniewska, M., Mouton, S., Simanov, D., Beltman, F., Grelling, M., De Mulder, K., Arindart, W., Weissert, P.M., van der Elst, S., Berezikov, E., 2016. Transcriptional signatures of somatic neoblasts and germline cells in *Macrostomum lignano*. *Elife* 5, e20607.
- Gruidl, M.E., Smith, P.A., Kuznicki, K.A., McCrone, J.S., Kirchner, J., Roussel, D.L., Strome, S., Bennett, K.L., 1996. Multiple potential germ-line helicases are components of the germ-line-specific P granules of *Caenorhabditis elegans*. *Proc. Natl. Acad. Sci. USA* 93, 13837–13842.
- Guder, C., Philipp, I., Lengfeld, T., Watanabe, H., Hobmayer, B., Holstein, T.W., 2006. The Wnt code: cnidarians signal the way. *Oncogene* 25, 7450.
- Guo, T., AHFM, Peters, Newmark PA, 2006. A Bruno-like gene is required for stem cell maintenance in planarians. *Dev. Cell* 11, 159–169.
- Hager, G., David, C.N., 1997. Pattern of differentiated nerve cells in hydra is determined by precursor migration. *Development* 124, 569–576.
- Hamada, Y., Bando, T., Nakamura, T., Ishimaru, Y., Mito, T., Noji, S., Tomioka, K., Ohuchi, H., 2015. Leg regeneration is epigenetically regulated by histone H3K27 methylation in the cricket *Gryllus bimaculatus*. *Development* 142, 2916–2927.
- Hay, B., Jan, L.Y., Jan, Y.N., 1988. A protein component of *Drosophila* polar granules is encoded by vasa and has extensive sequence similarity to ATP-dependent helicases. *Cell* 55, 577–587.
- Hay, B., Jan, L.Y., Jan, Y.N., 1990. Localization of vasa, a component of *Drosophila* polar granules, in maternal-effect mutants that alter embryonic anteroposterior polarity. *Development* 109, 425–433.
- Hayashi, T., Asami, M., Higuchi, S., Shibata, N., Agata, K., 2006. Isolation of planarian {X}-ray-sensitive stem cells by fluorescence-activated cell sorting. *Dev. Growth Differ.* 48, 371–380.
- Heatfield, B.M., Travis, D.F., 1975. Ultrastructural studies of regenerating spines of the sea urchin *Strongylocentrotus purpuratus* I. Cell types without spherules. *J. Morphol.* 145, 13–49.
- Hejnal, A., Obst, M., Stamatakis, A., Ott, M., Rouse, G.W., Edgecombe, G.D., Martinez, P., Baguña, J., Bailly, X., Jondelius, U., et al., 2009. Assessing the root of bilaterian animals with scalable phylogenomic methods. *Proc. R. Soc. Lond. B Biol. Sci.* 276, 4261–4270.
- Hemrich, G., Khalturin, K., Boehm, A.-M., Puchert, M., Anton-Erxleben, F., Wittlieb, J., Klostermeier, U.C., Rosenstiel, P., Oberg, H.-H., Domazet-Lošo, T., et al., 2012. Molecular signatures of the three stem cell lineages in hydra and the emergence of stem cell function at the base of multicellularity. *Mol. Biol. Evol.* 29, 3267–3280.
- Hirose, E., Saito, Y., Watanabe, H., 1995. Regeneration of the tunic cuticle in the compound ascidian, *Botrylloides simodensis*. *Dev. Comp. Immunol.* 19, 143–151.
- Hobmayer, B., Rentzsch, F., Kuhn, K., Happel, C.M., et al., 2000. WNT signalling molecules act in axis formation in the diploblastic metazoan *Hydra*. *Nature* 407, 186.
- Holstein, T., David, C.N., 1986. The properties of nerve cell precursors in hydra. *Dev. Biol.* 115, 18–26.
- Holstein, T.W., Hobmayer, E., Technau, U., 2003. Cnidarians: an evolutionarily conserved model system for regeneration? *Dev. Dyn.* 226, 257–267.
- Jaber-Hijazi, F., PJKP, Lo, Mihaylova, Y., Foster, J.M., Benner, J.S., Romero, B.T., Chen, C., Malla, S., Solana, J., Ruzov, A., et al., 2013. Planarian MBD2/3 is required for adult stem cell pluripotency independently of DNA methylation. *Dev. Biol.* 384, 141–153.
- Jager, M., Quéinnec, E., Le Guyader, H., Manuel, M., 2011. Multiple Sox genes are expressed in stem cells or in differentiating neuro-sensory cells in the hydrozoan *Clytia hemisphaerica*. *EvoDevo* 2, 12.
- Joly, J.-S., Kano, S., Matsuoka, T., Auger, H., Hirayama, K., Satoh, N., Awazu, S., Legendre, L., Sasakura, Y., 2007. Culture of *Ciona intestinalis* in closed systems. *Dev. Dyn.* 236, 1832–1840.
- Juliano, C.E., Reich, A., Liu, N., Götzfried, J., Zhong, M., Uman, S., Reenan, R.A., Wessel, G.M., Steele, R.E., Lin, H., 2014. PIWI proteins and PIWI-interacting RNAs function in *Hydra* somatic stem cells. *Proc. Natl. Acad. Sci. USA* 111, 337–342.
- Juliano, C.E., Swartz, S.Z., Wessel, G.M., 2010. A conserved germline multipotency program. *Development* 137, 4113–4126.
- Kanska, J., Frank, U., 2013. New roles for Nanos in neural cell fate determination revealed by studies in a cnidarian. *J. Cell Sci.* 126, 3192–3203.
- Kao, D., Lai, A.G., Stamatakis, E., Rosic, S., Konstantinides, N., Jarvis, E., Di Donfrancesco, A., Pouchkina-Stancheva, N., Semon, M., Grillo, M., et al., 2016. The genome of the crustacean *Parhyale hawaiiensis*, a model for animal development, regeneration, immunity and lignocellulose digestion. *Elife* 5, 1.
- Kao, D., Mihaylova, Y., Hughes, S., Lai, A., Aboobaker, A., 2017. Epigenetic analyses of the planarian genome reveals conservation of bivalent promoters in animal stem cells. *bioRxiv*, 122135.
- Kassmer, S.H., Rodriguez, D., De Tomaso, A.W., 2016. Colonial ascidians as model organisms for the study of germ cells, fertility, whole body regeneration, vascular biology and aging. *Curr. Opin. Genet. Dev.* 39, 101–106.
- Kierdorf, U., Li, C., Price, J.S., 2009. Improbable appendages: deer antler renewal as a unique case of mammalian regeneration. (In:) *Semin. Cell Dev. Biol.* 20, 535–542.
- Kloc, M., Bilinski, S., Etkin, L.D., 2004. The Balbiani body and germ cell determinants: 150 years later. *Curr. Top. Dev. Biol.* 59, 1–36.
- Kloc, M., Jedrzejska, I., Tworzydło, W., Bilinski, S.M., 2014. Balbiani body, nuage and sponge bodies—the germ plasm pathway players. *Arthropod Struct. Dev.* 43, 341–348.
- Konstantinides, N., Averof, M., 2014. A common cellular basis for muscle regeneration in arthropods and vertebrates. *Sci. (80-.)* 343, 788–791.
- Kontarakis, Z., Konstantinides, N., Pavlopoulos, A., Averof, M., 2011a. Reconfiguring gene traps for new tasks using iTRAC. *Fly. (Austin)*.

- Kontarakis, Z., Pavlopoulos, A., 2014. Transgenesis in non-model organisms: the case of Parhyale. *Hox Genes Methods Protoc.*, 145–181.
- Kontarakis, Z., Pavlopoulos, A., Kiupakis, A., Konstantinides, N., Douris, V., Averof, M., 2011b. A versatile strategy for gene trapping and trap conversion in emerging model organisms. *Development* 138, 2625–2630.
- Ladurner, P., Egger, B., Mulder, K., Pfister, D., Kualess, G., Salvenmoser, W., Schärer, L., 2008. The stem cell system of the basal flatworm *Macrostomum lignano*. *Stem Cells*, 75–94.
- Ladurner, P., Rieger, R., Baguña, J., 2000. Spatial distribution and differentiation potential of stem cells in hatchlings and adults in the marine platyhelminth *Macrostomum* sp.: a bromodeoxyuridine analysis. *Dev. Biol.* 226, 231–241.
- Lai, A.G., Kosaka, N., Abnave, P., Sahu, S., Aboobaker, A.A., 2017. The abrogation of condensin function provides independent evidence for defining the self-renewing population of pluripotent stem cells. *Dev. Biol.*
- Laird, D.J., Weissman, I.L., 2004. Telomerase maintained in self-renewing tissues during serial regeneration of the urochordate *Botryllus schlosseri*. *Dev. Biol.* 273, 185–194.
- Laumer, C.E., Hejnal, A., Giribet, G., 2015. Nuclear genomic signals of the “microtubellarian” roots of platyhelminth evolutionary innovation. *Elife* 4, e05503.
- Leclère, L., Copley, R.R., Momose, T., Houliston, E., 2016. Hydrozoan insights in animal development and evolution. *Curr. Opin. Genet. Dev.* 39, 157–167.
- Leclère, L., Jager, M., Barreau, C., Chang, P., Le Guyader, H., Manuel, M., Houliston, E., 2012. Maternally localized germ plasm mRNAs and germ cell/stem cell formation in the cnidarian *Clytia*. *Dev. Biol.* 364, 236–248.
- Lengfeld, T., Watanabe, H., Simakov, O., Lindgens, D., Gee, L., Law, L., Schmidt, H.A., Özbek, S., Bode, H., Holstein, T.W., 2009. Multiple Wnts are involved in Hydra organizer formation and regeneration. *Dev. Biol.* 330, 186–199.
- Lewis, S.H., Quarles, K.A., Yang, Y., Tang, Y., Frezal, L., Smith, S.A., Sharma, P.P., Cordaux, R., Gilbert, C., Giraud, I., et al., 2017. Pan-arthropod analysis reveals somatic piRNAs as an ancestral TE defence. *bioRxiv*, 185694.
- Li, C., Mackintosh, C.G., Martin, S.K., Clark, D.E., 2007. Identification of key tissue type for antler regeneration through pedicle periosteum deletion. *Cell Tissue Res.* 328, 65–75.
- Lim, R.S.M., Anand, A., Nishimiya-Fujisawa, C., Kobayashi, S., Kai, T., 2014. Analysis of Hydra PIWI proteins and piRNAs uncover early evolutionary origins of the piRNA pathway. *Dev. Biol.* 386, 237–251.
- Lin, G., Xu, N., Xi, R., 2008. Paracrine Wntless signalling controls self-renewal of *Drosophila* intestinal stem cells. *Nature* 455, 1119.
- Littlefield, C.L., 1991. Cell lineages in Hydra: isolation and characterization of an interstitial stem cell restricted to egg production in Hydra oligactis. *Dev. Biol.* 143, 378–388.
- Liu, S.-Y., Selck, C., Friedrich, B., Lutz, R., Vila-Farré, M., Dahl, A., Brandl, H., Lakshmanaperumal, N., Henry, I., Rink, J.C., 2013. Reactivating head regrowth in a regeneration-deficient planarian species. *Nature* 500, 81–84.
- Marie-Orleach, L., Janicke, T., Vizoso, D.B., David, P., Schärer, L., 2016. Quantifying episodes of sexual selection: insights from a transparent worm with fluorescent sperm. *Evolution (N. Y.)* 70, 314–328.
- Marie-Orleach, L., Janicke, T., Vizoso, D.B., Eichmann, M., Schärer, L., 2014. Fluorescent sperm in a transparent worm: validation of a GFP marker to study sexual selection. *BMC Evol. Biol.* 14, 148.
- Martin, A., Serano, J.M., Jarvis, E., Bruce, H.S., Wang, J., Ray, S., Barker, C.A., O’Connell, L.C., Patel, N.H., 2016. CRISPR/Cas9 mutagenesis reveals versatile roles of Hox genes in crustacean limb specification and evolution. *Curr. Biol.* 26, 14–26.
- Mashanov, V.S., Zueva, O.R., García-Arrarás, J.E., 2014. Transcriptomic changes during regeneration of the central nervous system in an echinoderm. *BMC Genom.* 15, 357.
- Mashanov, V.S., Zueva, O.R., García-Arrarás, J.E., 2015a. Heterogeneous generation of new cells in the adult echinoderm nervous system. *Front. Neuroanat.* 9.
- Mashanov, V.S., Zueva, O.R., García-Arrarás, J.E., 2013. Radial glial cells play a key role in echinoderm neural regeneration. *BMC Biol.* 11, 49.
- Mashanov, V.S., Zueva, O.R., García-Arrarás, J.E., 2015b. Myc regulates programmed cell death and radial glia dedifferentiation after neural injury in an echinoderm. *BMC Dev. Biol.* 15, 24.
- Mattila, J., Omelyanchuk, L., Kyttälä, S., Turunen, H., Nökkälä, S., 2004. Role of Jun N-terminal kinase (JNK) signaling in the wound healing and regeneration of a *Drosophila melanogaster* wing imaginal disc. *Int. J. Dev. Biol.* 49, 391–399.
- Mazzone, F., Byrne, M., Thorndyke, M.C., 2003. Arm autotomy and regeneration in the seastar *Coscinastraea muricata*. *Echinoderm Res.* 2001, 209–213.
- McGovern, T.M., 2003. Plastic reproductive strategies in a clonal marine invertebrate. *Proc. R. Soc. Lond. B Biol. Sci.* 270, 2517–2522.
- Micchelli, C.A., Perrimon, N., 2006. Evidence that stem cells reside in the adult *Drosophila* midgut epithelium. *Nature* 439, 475.
- Mihaylova, Y., Kao, D., Hughes, S., Lai, A., Jaber-Hijazi, F., Kosaka, N., Abnave, P., Aboobaker, A., 2017. MLL3/4 prevents stem cell hyperplasia and controls differentiation programs in a planarian cancer stem cell model. *bioRxiv*, 126540.
- Millane, R.C., Kanska, J., Duffy, D.J., Seoighe, C., Cunningham, S., Pickert, G., Frank, U., 2011. Induced stem cell neoplasia in a cnidarian by ectopic expression of a POU domain transcription factor. *Development* 138, 2429–2439.
- Mito, T., Noji, S., 2008. The two-spotted cricket *Gryllus bimaculatus*: an emerging model for developmental and regeneration studies. *cold spring Harb. Protoc* 2008, (pdb-emo110).
- Morrison, J.I., Borg, P., Simon, A., 2010. Plasticity and recovery of skeletal muscle satellite cells during limb regeneration. *FASEB J.* 24, 750–756.
- Morrison, J.I., Löf, S., He, P., Simon, A., 2006. Salamander limb regeneration involves the activation of a multipotent skeletal muscle satellite cell population. *J. Cell Biol.* 172, 433–440.
- Mount, J.G., Muzylak, M., Allen, S., Althnaian, T., McGonnell, I.M., Price, J.S., 2006. Evidence that the canonical Wnt signalling pathway regulates deer antler regeneration. *Dev. Dyn.* 235, 1390–1399.
- De Mulder, K., Kualess, G., Pfister, D., Willems, M., Egger, B., Salvenmoser, W., Thaler, M., Gorny, A.-K., Hrouda, M., Borgonie, G., et al., 2009. Characterization of the stem cell system of the acoel *Isodiametra pulchra*. *BMC Dev. Biol.* 9, 69.
- Müller, W.A., Teo, R., Frank, U., 2004. Totipotent migratory stem cells in a hydroid. *Dev. Biol.* 275, 215–224.
- Mwinyi, A., Bailly, X., Bourlat, S.J., Jondelius, U., Littlewood, D.T.J., Podsiadlowski, L., 2010. The phylogenetic position of Acoela as revealed by the complete mitochondrial genome of *Symsagittifera roscoffensis*. *BMC Evol. Biol.* 10, 309.
- Myohara, M., Yoshida-Noro, C., Kobari, F., Tochikai, S., 1999. Fragmenting oligochaete *Enchytraeus japonensis*: a new material for regeneration study. *Dev. Growth Differ.* 41, 549–555.
- Nakamura, T., Mito, T., Bando, T., Ohuchi, H., Noji, S., 2008. Molecular and cellular basis of regeneration and tissue repair. *Cell. Mol. life Sci.* 65, 64–72.
- Nakamura, T., Mito, T., Tanaka, Y., Bando, T., Ohuchi, H., Noji, S., 2007. Involvement of canonical Wnt/Wingless signaling in the determination of the positional values within the leg segment of the cricket *Gryllus bimaculatus*. *Dev. Growth Differ.* 49, 79–88.
- Newmark, P.A., Alvarado, A.S., 2000. Bromodeoxyuridine specifically labels the regenerative stem cells of planarians. *Dev. Biol.* 220, 142–153.
- Nimeth, K.T., Egger, B., Rieger, R., Salvenmoser, W., Peter, R., Gschwentner, R., 2007. Regeneration in *Macrostomum lignano* (Platyhelminthes): cellular dynamics in the neoblast stem cell system. *Cell Tissue Res.* 327, 637.
- Nimeth, K.T., Mählke, M., Mezzanato, A., Peter, R., Rieger, R., Ladurner, P., 2004. Stem cell dynamics during growth, feeding, and starvation in the basal flatworm *Macrostomum* sp. (Platyhelminthes). *Dev. Dyn.* 230, 91–99.
- Nishimiya-Fujisawa, C., Sugiyama, T., 1993. Genetic analysis of developmental mechanisms in hydra: xx. Cloning of interstitial stem cells restricted to the sperm differentiation pathway in *Hydra magnipapillata*. *Dev. Biol.* 157, 1–9.
- Ohlstein, B., Spradling, A., 2006. The adult *Drosophila* posterior midgut is maintained by pluripotent stem cells. *Nature* 439, 470.
- Ohlstein, B., Spradling, A., 2007. Multipotent *Drosophila* intestinal stem cells specify daughter cell fates by differential notch signaling. *Science* 315, 988–992.
- Önal, P., Grün, D., Adamidi, C., Rybak, A., Solana, J., Mastrobuoni, G., Wang, Y., Rahn, H.-P., Chen, W., Kempa, S., et al., 2012. Gene expression of pluripotency determinants is conserved between mammalian and planarian stem cells. *EMBO J.* 31, 2755–2769.
- Özpolat, B.D., Bely, A.E., 2016. Developmental and molecular biology of annelid regeneration: a comparative review of recent studies. *Curr. Opin. Genet. Dev.* 40, 144–153.
- Palakodeti, D., Smielewska, M., Lu, Y.-C., Yeo, G.W., Graveley, B.R., 2008. The PIWI proteins SMEDWI-2 and SMEDWI-3 are required for stem cell function and piRNA expression in planarians. *Rna* 14, 1174–1186.
- Passamaneck, Y.J., Martindale, M.Q., 2012. Cell proliferation is necessary for the regeneration of oral structures in the anthozoan cnidarian *Nematostella vectensis*. *BMC Dev. Biol.* 12, 34.
- Patruno, M., McGonnell, I., Graham, A., Beesley, P., Carnevali, M.D.C., Thorndyke, M., 2003. Anbmp2/4 is a new member of the transforming growth factor- β superfamily isolated from a ctenid and involved in regeneration. *Proc. R. Soc. Lond. B Biol. Sci.* 270, 1341–1347.
- Paulus, T., Müller, M., 2006. Cell proliferation dynamics and morphological differentiation during regeneration in *Dorvillea bermudensis* (Polychaeta, Dorvilleidae). *J. Morphol.* 267, 393–403.
- Pavlopoulos, A., Kontarakis, Z., Liubicich, D.M., Serano, J.M., Akam, M., Patel, N.H., Averof, M., 2009. Probing the evolution of appendage specialization by Hox gene misexpression in an emerging model crustacean. *Proc. Natl. Acad. Sci. USA* 106, 13897–13902.
- Pepling, M.E., Wilhelm, J.E., O’Hara, A.L., Gephart, G.W., Spradling, A.C., 2007. Mouse oocytes within germ cell cysts and primordial follicles contain a Balbiani body. *Proc. Natl. Acad. Sci. USA* 104, 187–192.
- Perea-Atienza, E., Botta, M., Salvenmoser, W., Gschwentner, R., Egger, B., Kristof, A., Martínez, P., Achatz, J.G., 2013. Posterior regeneration in *Isodiametra pulchra* (Acoela, Acoelomorpha). *Front. Zool.* 10, 64.
- Petersen, H.O., Höger, S.K., Looso, M., Lengfeld, T., Kuhn, A., Warnken, U., Nishimiya-Fujisawa, C., Schnölzer, M., Krüger, M., Özbek, S., et al., 2015. A comprehensive transcriptomic and proteomic analysis of hydra head regeneration. *Mol. Biol. Evol.* 32, 1928–1947.
- Pfister, D., De Mulder, K., Philipp, I., Kualess, G., Hrouda, M., Eichberger, P., Borgonie, G., Hartenstein, V., Ladurner, P., 2007. The exceptional stem cell system of *Macrostomum lignano*: screening for gene expression and studying cell proliferation by hydroxyurea treatment and irradiation. *Front. Zool.* 4, 9.
- Philippe, H., Brinkmann, H., Martinez, P., Riutort, M., Baguna, J., 2007. Acoel flatworms are not platyhelminthes: evidence from phylogenomics. *PLoS One* 2, e717.
- Pitt, J.N., Schisa, J.A., Priess, J.R., 2000. P granules in the germ cells of *Caenorhabditis elegans* adults are associated with clusters of nuclear pores and contain RNA. *Dev. Biol.* 219, 315–333.
- Plickert, G., Frank, U., Müller, W.A., 2012. Hydractinia, a pioneering model for stem cell biology and reprogramming somatic cells to pluripotency. *Int. J. Dev. Biol.* 56, 519–534.
- Praher, D., Zimmermann, B., Genikhovich, G., Columbus-Shenkar, Y., Modepalli, V., Aharoni, R., Moran, Y., Technau, U., 2017. Characterization of the piRNA pathway during development of the sea anemone *Nematostella vectensis*. *RNA Biol.* 0.
- Randolph, H., 1891. The regeneration of the tail in *Lumbricus*. *Zool. Anz.* 14, 154–156.

- Rebscher, N., Volk, C., Teo, R., Plickert, G., 2008. The germ plasm component Vasa allows tracing of the interstitial stem cells in the cnidarian *Hydractinia echinata*. *Dev. Dyn.* 237, 1736–1745.
- Reddien, P.W., Bermange, A.L., Murfitt, K.J., Jennings, J.R., Alvarado, A.S., 2005a. Identification of genes needed for regeneration, stem cell function, and tissue homeostasis by systematic gene perturbation in planaria. *Dev. Cell* 8, 635–649.
- Reddien, P.W., Oviedo, N.J., Jennings, J.R., Jenkin, J.C., Alvarado, A.S., 2005b. {SMEDWI}-2 is a {PIWI}-like protein that regulates planarian stem cells. *Science* 80 (310), 1327–1330.
- Reinardy, H.C., Emerson, C.E., Manley, J.M., Bodnar, A.G., 2015. Tissue regeneration and biomineralization in sea urchins: role of Notch signaling and presence of stem cell markers. *PLoS One* 10, e0133860.
- Reitzel, A.M., Burton, P.M., Krone, C., Finnerty, J.R., 2007. Comparison of developmental trajectories in the starlet sea anemone *Nematostella vectensis*: embryogenesis, regeneration, and two forms of asexual fission. *Invertebr. Biol.* 126, 99–112.
- Rinkevich, Y., Paz, G., Rinkevich, B., Reshef, R., 2007. Systemic bud induction and retinoic acid signaling underlie whole body regeneration in the urochordate *Botryllodes leachi*. *PLoS Biol.* 5, e71.
- Rinkevich, Y., Rosner, A., Rabinowitz, C., Lipidot, Z., Moiseeva, E., Rinkevich, B., 2010. Piwi positive cells that line the vasculature epithelium, underlie whole body regeneration in a basal chordate. *Dev. Biol.* 345, 94–104.
- Rinkevich, Y., Voskoboynik, A., Rosner, A., Rabinowitz, C., Paz, G., Oren, M., Douek, J., Alfassi, G., Moiseeva, E., Ishizuka, K.J., et al., 2013. Repeated, long-term cycling of putative stem cells between niches in a basal chordate. *Dev. Cell* 24, 76–88.
- Romero, B.T., Evans, D.J., Aboobaker, A.A., 2012. {FACS} analysis of the planarian stem cell compartment as a tool to understand regenerative mechanisms. *Progenit. Cells Methods Protoc.*, 167–179.
- Rossi, L., Salvetti, A., Lena, A., Batistoni, R., Deri, P., Pugliesi, C., Loreti, E., Gremigni, V., 2006. DjPiwi-1, a member of the PAZ-Piwi gene family, defines a subpopulation of planarian stem cells. *Dev. Genes Evol.* 216, 335.
- Rouhana, L., Vieira, A.P., Roberts-Galbraith, R.H., Newmark, P.A., 2012. PRMT5 and the role of symmetrical dimethylarginine in chromatoid bodies of planarian stem cells. *Development* 139, 1083–1094.
- Rouhana, L., Weiss, J.A., King, R.S., Newmark, P.A., 2014. PIWI homologs mediate histone H4 mRNA localization to planarian chromatoid bodies. *Development* 141, 2592–2601.
- Rubilar, T., de Ward, C.T.P., de Vivar, M.E.D., 2005. Sexual and asexual reproduction of *Allostichaster capensis* (Echinodermata: asteroidea) in Golfo Nuevo. *Mar. Biol.* 146, 1083–1090.
- Ruiz-Trillo, I., Paps, J., Loukota, M., Ribera, C., Jondelius, U., Bagaña, J., Riutort, M., 2002. A phylogenetic analysis of myosin heavy chain type II sequences corroborates that Acoela and Nemertodermatida are basal bilaterians. *Proc. Natl. Acad. Sci. USA* 99, 11246–11251.
- Ruiz-Trillo, I., Riutort, M., Fourcade, H.M., Bagaña, J., Boore, J.L., 2004. Mitochondrial genome data support the basal position of Acoelomorpha and the polyphyly of the Platyhelminthes. *Mol. Phylogenet. Evol.* 33, 321–332.
- Ruiz-Trillo, I., Riutort, M., Littlewood, D.T.J., Herniou, E.A., Bagaña, J., 1999. Acoel flatworms: earliest extant bilaterian metazoans, not members of Platyhelminthes. *Science* 80 (283), 1919–1923.
- Salvetti, A., Rossi, L., Lena, A., Batistoni, R., Deri, P., Rainaldi, G., Locci, M.T., Evangelista, M., Gremigni, V., 2005. DjPum, a homologue of *Drosophila* Pumilio, is essential to planarian stem cell maintenance. *Development* 132, 1863–1874.
- San Miguel-Ruiz, J.E., García-Arrarás, J.E., 2007. Common cellular events occur during wound healing and organ regeneration in the sea cucumber *Holothuria glaberrima*. *BMC Dev. Biol.* 7, 115.
- Sandoval-Guzmán, T., Wang, H., Khattak, S., Schuez, M., Roensch, K., Nacu, E., Tazaki, A., Joven, A., Tanaka, E.M., Simon, A., 2014. Fundamental differences in dedifferentiation and stem cell recruitment during skeletal muscle regeneration in two salamander species. *Cell Stem Cell* 14, 174–187.
- Sasaki, H., Yoshida, K., Hozumi, A., Sasakura, Y., 2014. CRISPR/Cas9-mediated gene knockout in the ascidian *Ciona intestinalis*. *Dev. Growth Differ.* 56, 499–510.
- Sasakura, Y., 2007. Germline transgenesis and insertional mutagenesis in the ascidian *Ciona intestinalis*. *Dev. Dyn.* 236, 1758–1767.
- Sato, K., Sugita, T., Kobayashi, K., Fujita, K., Fujii, T., Matsumoto, Y., Mikami, T., Nishizuka, N., Nishizuka, S., Shojima, K., et al., 2001. Localization of mitochondrial ribosomal RNA on the chromatoid bodies of marine planarian polyclad embryos. *Dev. Growth Differ.* 43, 107–114.
- Schärer, L., Ladurner, P., 2003. Phenotypically plastic adjustment of sex allocation in a simultaneous hermaphrodite. *Proc. R. Soc. Lond. B Biol. Sci.* 270, 935–941.
- Schubert, A., Koziol, U., Cailliau, K., Vanderstraete, M., Dissous, C., Brehm, K., 2014. Targeting *Echinococcus* multilocularis stem cells by inhibition of the Polo-like kinase EmPlk1. *PLoS Negl. Trop. Dis.* 8, e2870.
- Scimone, M.L., Meisel, J., Reddien, P.W., 2010. The Mi-2-like *Smed-CHD4* gene is required for stem cell differentiation in the planarian *Schmidtea mediterranea*. *Development* 137, 1231–1241.
- Seifert, A.W., Kiama, S.G., Seifert, M.G., Goheen, J.R., Palmer, T.M., Maden, M., 2012. Skin shedding and tissue regeneration in African spiny mice (*Acomys*). *Nature* 489, 561–565.
- Seipel, K., Yanze, N., Schmid, V., 2003. The germ line and somatic stem cell gene *Cniwi* in the jellyfish *Podocoryne carnea*. *Int. J. Dev. Biol.* 48, 1–7.
- Sempere, L.F., Martínez, P., Cole, C., Bagaña, J., Peterson, K.J., 2007. Phylogenetic distribution of microRNAs supports the basal position of acoel flatworms and the polyphyly of Platyhelminthes. *Evol. Dev.* 9, 409–415.
- Serano, J.M., Martin, A., Liubichich, D.M., Jarvis, E., Bruce, H.S., La, K., Browne, W.E., Grimwood, J., Patel, N.H., 2016. Comprehensive analysis of Hox gene expression in the amphipod crustacean *Parhyale hawaiiensis*. *Dev. Biol.* 409, 297–309.
- Shibata, N., Kashima, M., Ishiko, T., Nishimura, O., Rouhana, L., Misaki, K., Yonemura, S., Saito, K., Siomi, H., Siomi, M.C., et al., 2016. Inheritance of a nuclear PIWI from pluripotent stem cells by somatic descendants ensures differentiation by silencing transposons in planarian. *Dev. Cell* 37, 226–237.
- Shibata, N., Umesono, Y., Orii, H., Sakurai, T., Watanabe, K., Agata, K., 1999. Expression of *vasa* (vas)-related genes in germline cells and totipotent somatic stem cells of planarians. *Dev. Biol.* 206, 73–87.
- Siebert, S., Anton-Erxleben, F., Bosch, T.C.G., 2008. Cell type complexity in the basal metazoan *Hydra* is maintained by both stem cell based mechanisms and transdifferentiation. *Dev. Biol.* 313, 13–24.
- Sikes, J.M., Bely, A.E., 2010. Making heads from tails: development of a reversed anterior–posterior axis during budding in an acoel. *Dev. Biol.* 338, 86–97.
- Sikes, J.M., Newmark, P.A., 2013. Restoration of anterior regeneration in a planarian with limited regenerative ability. *Nature* 500, 77.
- Smith, G.N., Jr., Greenberg, M.J., 1973. Chemical control of the evisceration process in *Thyone briareus*. *Biol. Bull.* 144, 421–436.
- Solana, J., 2013. Closing the circle of germline and stem cells: the Primordial Stem Cell hypothesis. *EvoDevo* 4, 2.
- Solana, J., Irimia, M., Ayoub, S., Orejuela, M.R., Zywtz, V., Jens, M., Tapia, J., Ray, D., Morris, Q., Hughes, T.R., et al., 2016. Conserved functional antagonism of CELF and MBNL proteins controls stem cell-specific alternative splicing in planarians. *Elife* 5, e16797.
- Solana, J., Kao, D., Mihaylova, Y., Jaber-Hijazi, F., Malla, S., Wilson, R., Aboobaker, A., 2012. Defining the molecular profile of planarian pluripotent stem cells using a combinatorial {RNA}-seq, {RNA} interference and irradiation approach. *Genome Biol.* 13, R19.
- Solana, J., Lasko, P., Romero, R., 2009. Spoltud-1 is a chromatoid body component required for planarian long-term stem cell self-renewal. *Dev. Biol.* 328, 410–421.
- Sprecher, S.G., Bernardo-Garcia, F.J., van Giesen, L., Hartenstein, V., Reichert, H., Neves, R., Bailly, X., Martinez, P., Brauchle, M., 2015. Functional brain regeneration in the acoel worm *Syngasteria roosei*. *Biol. Open*, 014266.
- Srivastava, M., Mazza-Curl, K.L., van Wolfswinkel, J.C., Reddien, P.W., 2014. Whole-body acoel regeneration is controlled by Wnt and Bmp-Admp signaling. *Curr. Biol.* 24, 1107–1113.
- Stamatakis, E., Pavlopoulos, A., 2016. Non-insect crustacean models in developmental genetics including an encomium to *Parhyale hawaiiensis*. *Curr. Opin. Genet. Dev.* 39, 149–156.
- Steele, R.E., David, C.N., Technau, U., 2011. A genomic view of 500 million years of cnidarian evolution. *Trends Genet.* 27, 7–13.
- Stolfi, A., Gandhi, S., Salek, F., Christiaen, L., 2014. Tissue-specific genome editing in *Ciona* embryos by CRISPR/Cas9. *Development* 141, 4115–4120.
- Sugiyama, T., Fujisawa, T., 1978. Genetic analysis of developmental mechanisms in *Hydra*. II. Isolation and characterization of an interstitial cell-deficient strain. *J. Cell Sci.* 29, 35–52.
- Sutton, M.F., 1953. The regeneration of the siphons of *Ciona intestinalis* L. *J. Mar. Biol. Assoc.* 32, 249–268, (United Kingdom).
- Szabó, R., Ferrier, D.E.K., 2014. Cell proliferation dynamics in regeneration of the operculum head appendage in the annelid *Pomatoceros lamarckii*. *J. Exp. Zool. Part B Mol. Dev. Evol.* 322, 257–268.
- Tabata, T., Kornberg, T.B., 1994. Hedgehog is a signaling protein with a key role in patterning *Drosophila* imaginal discs. *Cell* 76, 89–102.
- Tadokoro, R., Sugio, M., Kutsuna, J., Tochinal, S., Takahashi, Y., 2006. Early segregation of germ and somatic lineages during gonadal regeneration in the annelid *Enchytraeus japonensis*. *Curr. Biol.* 16, 1012–1017.
- Takeo, M., Yoshida-Noro, C., Tochinal, S., 2009. Functional analysis of *grimp*, a novel gene required for mesodermal cell proliferation at an initial stage of regeneration in *Enchytraeus japonensis* (Enchytraeidae, oligochaete). *Int. J. Dev. Biol.* 54, 151–160.
- Tanaka, E.M., Reddien, P.W., 2011. The cellular basis for animal regeneration. *Dev. Cell* 21, 172–185.
- Telford, M.J., Lockyer, A.E., Cartwright-Finch, C., Littlewood, D.T.J., 2003. Combined large and small subunit ribosomal RNA phylogenies support a basal position of the acoelomorph flatworms. *Proc. R. Soc. Lond. B Biol. Sci.* 270, 1077–1083.
- Teo, R., Möhrlein, F., Plickert, G., Müller, W.A., Frank, U., 2006. An evolutionary conserved role of Wnt signaling in stem cell fate decision. *Dev. Biol.* 289, 91–99.
- Thorndyke, M.C., Chen, W.-C., Beesley, P.W., Patrino, M., 2001. Molecular approach to echinoderm regeneration. *Microsc. Res. Tech.* 55, 474–485.
- Tiozzo, S., Brown, F.D., De Tomaso, A.W., 2008. Regeneration and Stem Cells in Ascidians (Stem Cells). Springer, 95–112.
- Toth, S.E., 1967. Tissue compatibility in regenerating explants from the colonial marine hydroid *Hydractinia echinata* (Flem.). *J. Cell. Physiol.* 69, 125–131.
- Trevino, M., Stefanik, D.J., Rodriguez, R., Harmon, S., Burton, P.M., 2011. Induction of canonical Wnt signaling by alsterpaullone is sufficient for oral tissue fate during regeneration and embryogenesis in *Nematostella vectensis*. *Dev. Dyn.* 240, 2673–2679.
- Umesono, Y., Tasaki, J., Nishimura, Y., Hrouda, M., Kawaguchi, E., Yazawa, S., Nishimura, O., Hosoda, K., Inoue, T., Agata, K., 2013. The molecular logic for planarian regeneration along the anterior–posterior axis. *Nature* 500, 73.
- Voskoboynik, A., Neff, N.F., Sahoo, D., Newman, A.M., Pushkarev, D., Koh, W., Passarelli, B., Fan, H.C., Mantalas, G.L., Palmeri, K.J., et al., 2013. The genome sequence of the colonial chordate, *Botryllus schlosseri*. *Elife* 2, e00569.
- Voskoboynik, A., Weissman, I.L., 2015. *Botryllus schlosseri*, an emerging model for the study of aging, stem cells, and mechanisms of regeneration. *Invertebr. Reprod. Dev.* 59, 33–38.
- Wagner, D.E., Wang, I.E., Reddien, P.W., 2011. Clonogenic neoblasts are pluripotent adult stem cells that underlie planarian regeneration. *Science* 80 (332), 811–816.

- Wang, Y., Stary, J.M., Wilhelm, J.E., Newmark, P.A., 2010. A functional genomic screen in planarians identifies novel regulators of germ cell development. *Genes Dev.* 24, 2081–2092.
- Wasik, K., Gurtowski, J., Zhou, X., Ramos, O.M., Delás, M.J., Battistoni, G., El Demerdash, O., Falcioni, I., Vizoso, D.B., Smith, A.D., et al., 2015. Genome and transcriptome of the regeneration-competent flatworm, *Macrostomum lignano*. *Proc. Natl. Acad. Sci. USA* 112, 12462–12467.
- Watanabe, T., Noji, S., Mito, T., 2017. Genome editing in the cricket, *Gryllus bimaculatus*. *Methods Mol. Biol. (Clifton, NJ)* 1630, 219.
- Watkins, M.J., 1958. Regeneration of buds in *Botryllus*. *Biol. Bull.* 115, 147–152.
- Weick, E.-M., Miska, E.A., 2014. piRNAs: from biogenesis to function. *Development* 141, 3458–3471.
- Wolff, C., Tinevez, J.-Y., Pietzsch, T., Stamatakis, E., Harich, B., Preibisch, S., Shorte, S., Keller, P.J., Tomancak, P., Pavlopoulos, A., 2017. Reconstruction of cell lineages and behaviors underlying arthropod limb outgrowth with multi-view light-sheet imaging and tracking. *bioRxiv*, 112623.
- van Wolfswinkel, J.C., 2014. Piwi and potency: PIWI proteins in animal stem cells and regeneration. *Integr. Comp. Biol.* 54, 700–713. <http://dx.doi.org/10.1093/icb/icu084>.
- van Wolfswinkel, J.C., Wagner, D.E., Reddien, P.W., 2014. Single-cell analysis reveals functionally distinct classes within the planarian stem cell compartment. *Cell Stem Cell* 15, 326–339.
- Wu, Z., Ghosh-Roy, A., Yanik, M.F., Zhang, J.Z., Jin, Y., Chisholm, A.D., 2007. *Caenorhabditis elegans* neuronal regeneration is influenced by life stage, ephrin signaling, and synaptic branching. *Proc. Natl. Acad. Sci. USA* 104, 15132–15137.
- Wudarski, J., Simanov, D., Ustyantsev, K., de Mulder, K., Grelling, M., Grudniewska, M., Beltman, F., Glazenburg, L., Demircan, T., Wunderer, J., et al., 2017. A platform for efficient transgenesis in *Macrostomum lignano*, a flatworm model organism for stem cell research. *bioRxiv*, 151654.
- Yanik, M.F., Cinar, H., Cinar, H.N., Chisholm, A.D., Jin, Y., Ben-Yakar, A., 2004. Neurosurgery: functional regeneration after laser axotomy. *Nature* 432, 822.
- Yanik, M.F., Cinar, H., Cinar, H.N., Gibby, A., Chisholm, A.D., Jin, Y., Ben-Yakar, A., 2006. Nerve regeneration in *Caenorhabditis elegans* after femtosecond laser axotomy. *IEEE J. Sel. Top. Quantum Electron.* 12, 1283–1291.
- Yoshida-Noro, C., Tochitani, S., 2010. Stem cell system in asexual and sexual reproduction of *Enchytraeus japonensis* (Oligochaeta, Annelida). *Dev. Growth Differ.* 52, 43–55.
- Zantke, J., Bannister, S., Rajan, V.B.V., Raible, F., Tessmar-Raible, K., 2014. Genetic and genomic tools for the marine annelid *Platynereis dumerilii*. *Genetics* 197, 19–31.
- Zeng, L., Jacobs, M.W., Swalla, B.J., 2006. Coloniality has evolved once in stolidobranch ascidians. *Integr. Comp. Biol.* 46, 255–268.
- Zhu, S.J., Pearson, B.J., 2016. (Neo) blast from the past: new insights into planarian stem cell lineages. *Curr. Opin. Genet. Dev.* 40, 74–80.