

Habitat Evaluation Procedures (HEP) Report

Pend Oreille Wetlands Wildlife I Project

Technical Report 2002

May 2003

DOE/BP-00004008-3



This Document should be cited as follows:

Holmes, Darren, "Habitat Evaluation Procedures (HEP) Report; Pend Oreille Wetlands Wildlife I Project", 2002 Technical Report, Project No. 199106000, 33 electronic pages, (BPA Report DOE/BP-00004008-3)

Bonneville Power Administration
P.O. Box 3621
Portland, OR 97208

This report was funded by the Bonneville Power Administration (BPA), U.S. Department of Energy, as part of BPA's program to protect, mitigate, and enhance fish and wildlife affected by the development and operation of hydroelectric facilities on the Columbia River and its tributaries. The views in this report are the author's and do not necessarily represent the views of BPA.

2002
Habitat Evaluation Procedure (HEP)
Report for the
Pend Oreille Wetlands Wildlife Project

Contract No. 00004008
Project No. 1991-060-00

Darren Holmes
Wildlife Project Manager
Kalispel Natural Resource Department



May 2003

TABLE OF CONTENTS

LIST OF FIGURES	ii
LIST OF TABLES	ii
LIST OF APPENDICES	ii
ABSTRACT	1
INTRODUCTION	1
METHODS	4
RESULTS	7
DISCUSSION	10
Conifer Forest	10
Deciduous Forested Wetland	10
Scrub-shrub Wetland	11
Grassland Meadow	11
Wet Meadow	11
Cattail Hemi-marsh	11
Open Water	11
Shoreline	11
Island	11
ACKNOWLEDGMENTS	12
LITERATURE CITED	13

LIST OF FIGURES

Figure 1. Pend Oreille Wetlands Wildlife Project vicinity near Usk, Washington.2

Figure 2. Pend Oreille Wetlands Wildlife Project location.4

Figure 3. HEP sampling locations and habitat cover types on the Pend Oreille Wetlands Wildlife Project.5

LIST OF TABLES

Table 1. Target species, life requisites, and HSI values for the Pend Oreille Wetlands Wildlife Project.4

Table 2. Pend Oreille Wetlands Wildlife Project target species and associated cover types.5

Table 3. Cover type acreage for the Pend Oreille Wetlands Wildlife Project.6

Table 4. HEP results for the Pend Oreille Wetlands Wildlife Project.7

LIST OF APPENDICES

Appendix A: Habitat Suitability Index Models A-1

ABSTRACT

In 2002, the Habitat Evaluation Procedure (HEP) was used to determine baseline habitat suitability on the Pend Oreille Wetlands Wildlife Project, an acquisition completed by the Kalispel Tribe of Indians in 1992. Evaluation species and appropriate models include bald eagle, black-capped chickadee, Canada goose, mallard, muskrat, and yellow warbler. Habitat Suitability Index (HSI) values were visually estimated and agreed upon by all HEP team members. The Pend Oreille Wetlands Wildlife Project provides a total of 936.76 Habitat Units (HUs) for the species evaluated. Open water habitat provides 71.92 HUs for Canada goose, mallard, and muskrat. Shoreline and island habitat provide 12.77 HUs for Canada goose and mallard. Cattail hemi-marsh provides 308.42 HUs for Canada goose, mallard, and muskrat. Wet meadow provides 208.95 HUs for Canada goose and mallard. Scrub-shrub wetlands provide 14.43 HUs for yellow warbler, mallard, and white-tailed deer. Deciduous forested wetlands provide 148.62 HUs for bald eagle, black-capped chickadee, mallard, and white-tailed deer. Grassland meadow provides 3.38 HUs for Canada goose. Conifer forest provides 160.44 HUs for bald eagle, black-capped chickadee, and white-tailed deer.

INTRODUCTION

The Habitat Evaluation Procedure (HEP) was developed in 1980 by the U. S. Fish and Wildlife Service (USFWS) (USFWS 1980a, USFWS 1980b). HEP is a species-habitat based approach to assess project impacts, and it is a convenient tool to document the predicted effects of proposed management actions. The Northwest Power Planning Council (NPPC), now known as the Northwest Power and Conservation Council (NPCC), endorsed the use of HEP in its Columbia River Basin Fish and Wildlife Program to evaluate wildlife benefits and impacts associated with the development and operation of the federal Columbia River Basin hydroelectric system (NPPC 1994). The Albeni Falls Interagency Work Group (Work Group) used HEP in 1987 to evaluate wildlife impacts attributed to the Albeni Falls hydroelectric facility (Martin et al. 1988).

In 1992, the Kalispel Tribe purchased the Pend Oreille Wetlands Wildlife Project, located near the Kalispel Indian Reservation in Usk, Washington ([Figures 1](#) and [2](#)). The initial baseline habitat assessment was completed in 2002. The baseline assessment describes existing ecological conditions on the property and will be used to guide future enhancement activities.

The objective of using HEP at the Pend Oreille Wetlands Wildlife Project and other protected properties is to document the quality and quantity of available habitat for selected wildlife species. In this way, HEP provides information on the relative value of the same area at future points in time so that the effect of management activities on wildlife habitat can be quantified. When combined with other tools, the baseline HEP will be used to determine the most effective on-site management, restoration, and enhancement actions to increase habitat suitability for targeted species. The same process will be replicated every five years to quantitatively evaluate the effectiveness of management strategies in improving and maintaining habitat conditions while providing additional crediting to BPA for enhanced habitat values.

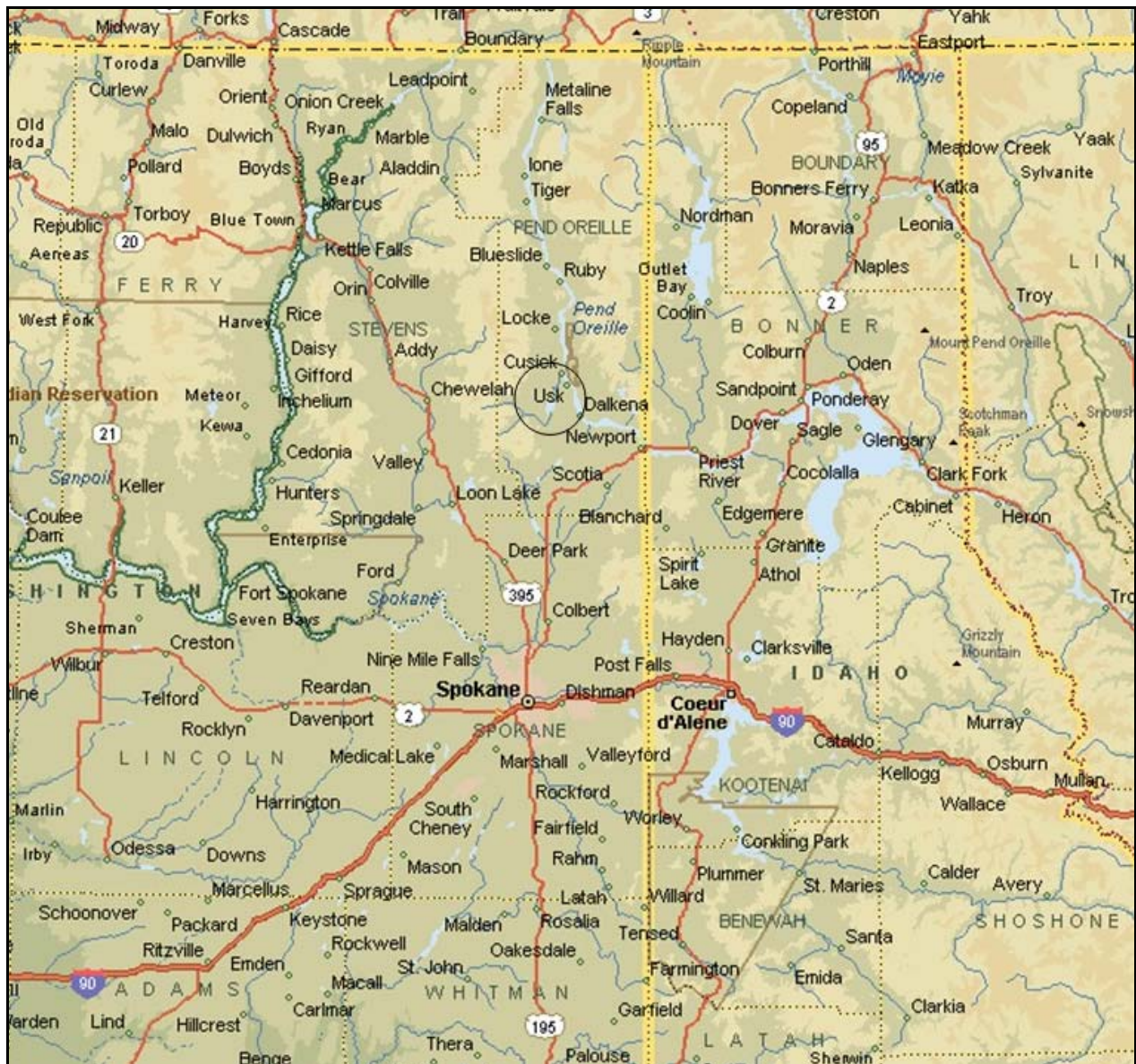


Figure 1. Pend Oreille Wetlands Wildlife Project vicinity near Usk, Washington.

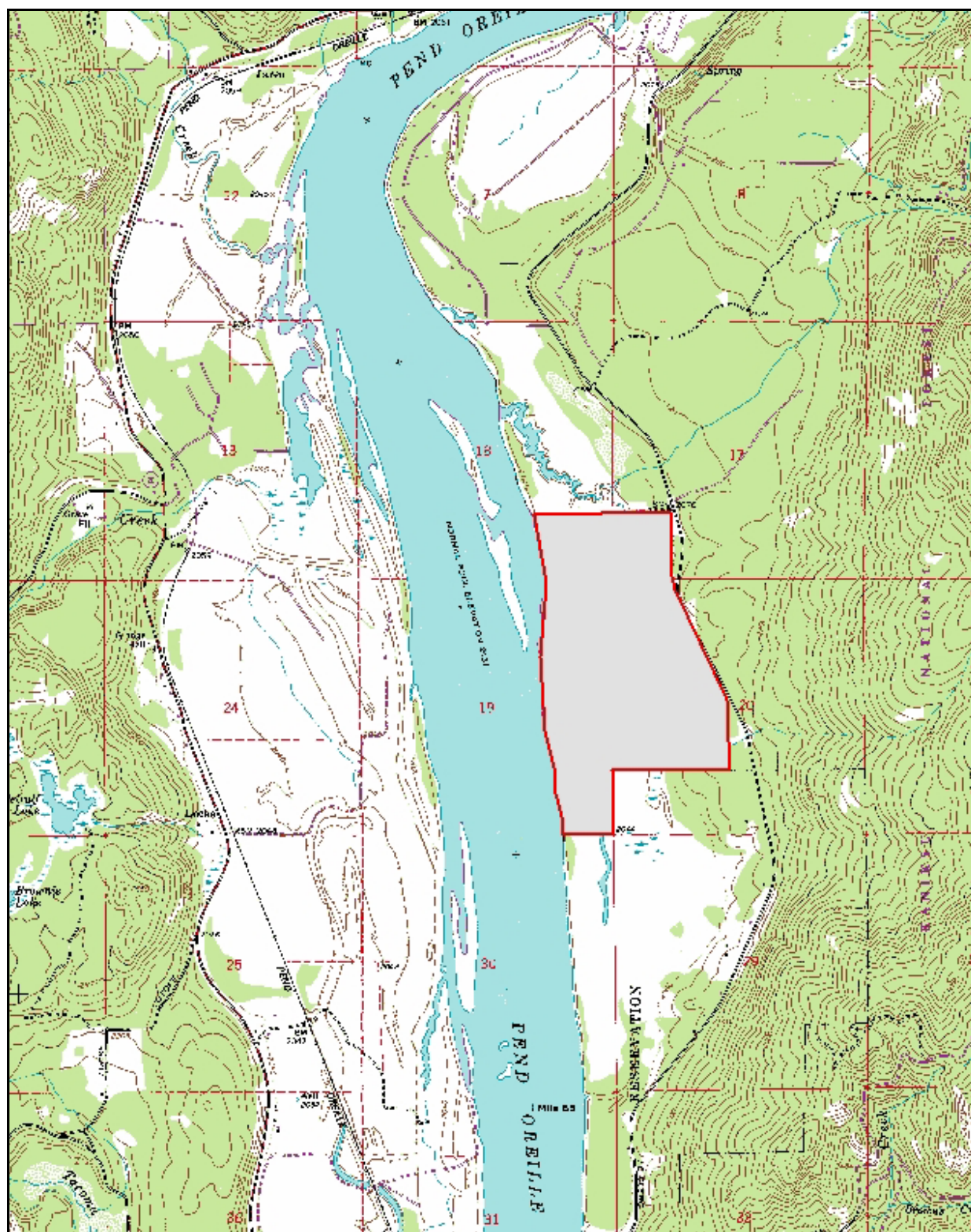


Figure 2. Pend Oreille Wetlands Wildlife Project location.

METHODS

The HEP is based on the assumption that habitat for selected wildlife species can be described by a Habitat Suitability Index (HSI). This value is derived from an evaluation of the ability of key habitat components to supply the life requisites of selected wildlife species. Habitat quality, expressed as an index or HSI, measures how suitable the habitat is for a particular species when compared to optimum habitat. The HSI varies from zero to one (optimum). The value of an area to a given species of wildlife is a product of the size of the area and the quality of the area (HSI) for the species. This product is comparable to “habitat value” and is expressed as a Habitat Unit (HU). One HU is equal to a unit of area (one acre, for example) which has optimum value to the target species.

The HEP team randomly selected various sites within each cover type from which life requisite data were collected. Habitat quality for seven target species was visually inspected by the HEP team and all values were recorded in the field ([Table 1](#)).

Table 1. Target species, life requisites, and HSI values for the Pend Oreille Wetlands Wildlife Project.

Target Species	Life Requisite	HSI Equation	HSI Value
Bald eagle (breeding)	Reproduction	$(V_2 \times V_3 \times V_4)^{1/3}$	HSI value
Bald eagle (wintering)	Food	$[(V_1)^2 \times V_2]^{1/3}$	HSI value
Black-capped chickadee	Food	$(V_1 \times V_2)^{1/2}$	Lowest value
	Reproduction	V_3	
Canada goose	Reproduction	$[(V_1 + V_2)V_3]^{1/2}$	HSI value
Mallard	Reproduction	V_1 or V_2 or V_3	Lowest value
Muskrat	Food	$(V_1 \times V_2)^{1/2}$	Lowest value
	Cover	$(V_1 \times V_8)^{1/2}$	
Yellow warbler	Reproduction	$(V_1 \times V_2 \times V_3)^{1/2}$	HSI value
White-tailed deer	Food	V_1	HSI value

Black-capped chickadee HSI values were determined from one site; Canada goose, mallard, muskrat, yellow warbler, and white-tailed deer HSI values were calculated from 3 sites; and bald eagle values were determined from 4 sites. HSI values were determined using the equations specified in the species models for bald eagle, black-capped chickadee, Canada goose, mallard, muskrat, yellow warbler and white-tailed deer¹, ([Appendix A](#)). Ten sampling sites were permanently located using a Garmin III global positioning system ([Figure 3](#)).

Habitat cover types were delineated using 1:24,000 scale 1992 U.S. Forest Service aerial photography and on-site verification ([Table 2](#)). Supplemental information was used from the USFWS National Wetland Inventory map. Cover type acreage was determined using Arcview 3.1 software ([Table 3](#)). The Habitat Units were calculated using the formula:

¹ To maintain consistency within the Albeni Falls Wildlife Mitigation Program, modified species models and histograms used by the Kalispel Tribe (Merker 1993) were used at the Pend Oreille Wetlands Wildlife Project.

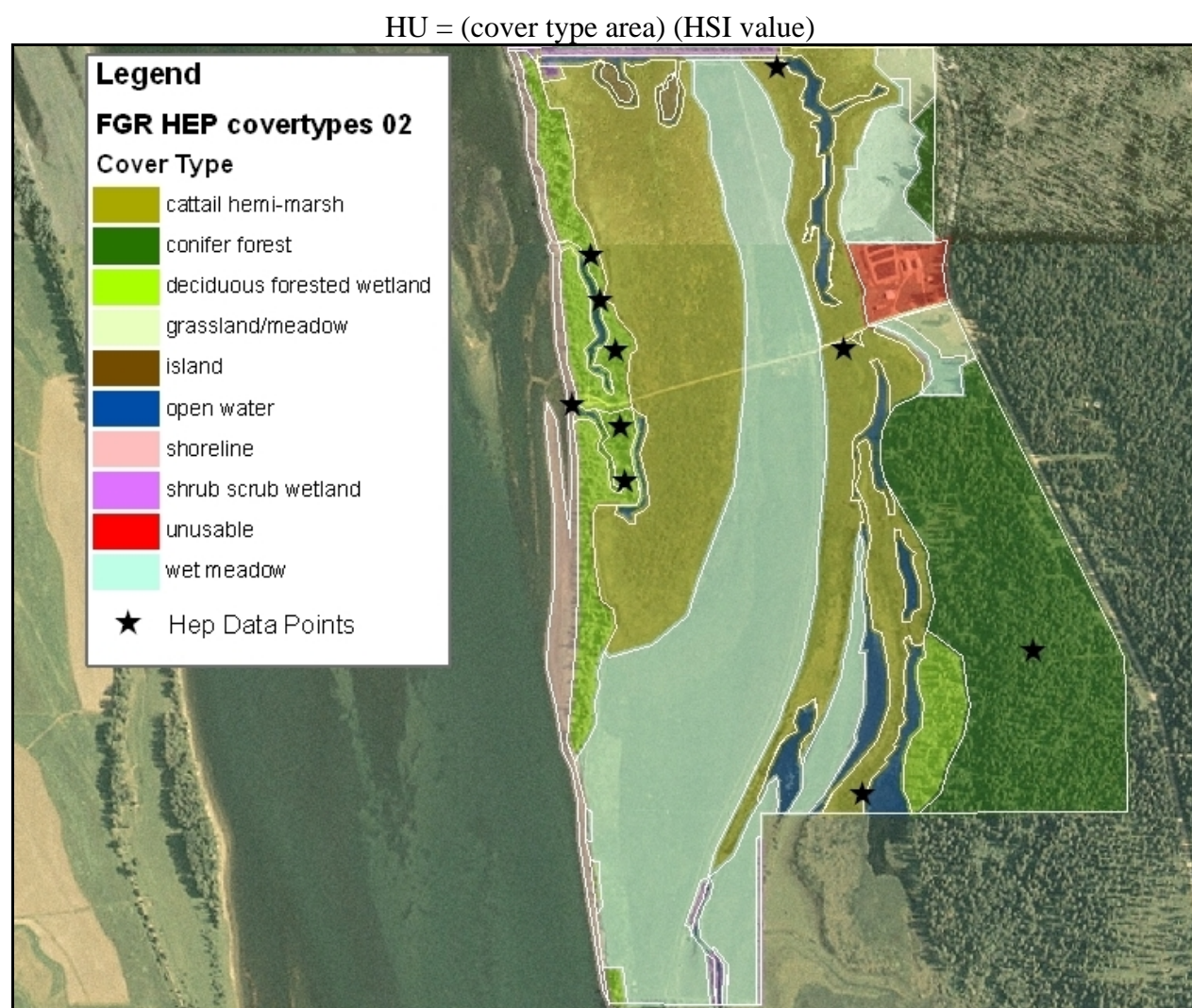


Figure 3. HEP sampling locations and habitat cover types on the Pend Oreille Wetlands Wildlife Project.

Table 2. Pend Oreille Wetlands Wildlife Project target species and associated cover types.

Target Species	Open Water	Island	Shoreline	Cattail Hemi-marsh	Wet Meadow	Scrub-Shrub Wetland	Deciduous Forest Wetland	Grassland Meadow	Conifer Forest
Bald eagle							X		X
Black-capped chickadee							X		X
Canada goose	X	X	X	X	X			X	
Mallard	X	X	X	X	X	X	X		
Muskrat	X			X					
Yellow warbler						X			
White-tailed deer						X	X		X

Table 3. Cover type acreage for the Pend Oreille Wetlands Wildlife Project.

Cover Type	Acres
Open water	29.97
Shoreline*	12.04
Island*	1.25
Cattail hemi-marsh	128.51
Wet meadow	134.81
Scrub-shrub wetland	6.04
Deciduous forested wetland	34.81
Grassland meadow	5.13
Conifer forest	76.04
Subtotal	428.60
Unusable	7.04
Total	435.64
*Consists of wet meadow cover type	

The HEP team collected habitat data along a transect (100-foot intervals) within each cover type. Sampling transects were lengthened to achieve a 90 percent confidence level for parameter point estimates. Adequacy of habitat sampling was determined using the formula (Lapin 1980):

$$\frac{\alpha^2 \times \sigma^2}{e^2}$$

Where:

α = critical normal value (p=0.1) from any standard statistical reference

σ = standard deviation

e = tolerable error level

Shrub presence, species, and height data were collected at 2-foot intervals along the sampling transect. Percent herbaceous cover and percent herbaceous cover composed of grass were measured using a 0.5 by 1.0 meter sampling frame (Daubenmire 1959) at 50-foot intervals along the transect. Height of the herbaceous layer was measured at 5 points within the sampling frame. A Robel pole (Robel et al. 1970) was used to determine the height-density of the herbaceous layer. Visual obstruction rating (VOR) was determined by four Robel pole measurements, two parallel and two perpendicular to the transect, and taken at 50-foot intervals along the transect. Distances to water, size of water bodies, ratios of open water to emergent vegetation, and road densities were derived from a combination of field estimation and evaluation of aerial photographs and topographic maps.

To determine the suitability of mallard brood-rearing habitat adjacent to the shoreline, aerial photography was examined and field verification was conducted 100 meters from the water's edge.

RESULTS

The Pend Oreille Wetlands Wildlife Project is comprised of nine habitat types. Open water (29.97 acres) provides 71.92 HUs for Canada goose, mallard, and muskrat. Island and shoreline habitat provide a total of 12.77 HUs for Canada goose and mallard. Cattail hemi-marsh (128.51 acres) provides the majority of HUs (308.42 HUs) on the Project for Canada goose, mallard, and muskrat. Wet meadow (134.81 acres) provides 208.95 HUs for Canada goose and mallard. Scrub-shrub wetlands (6.04 acres) provide habitat for yellow warbler (5.37 HUs), mallard (3.02 HUs), and white-tailed deer (6.04 HUs). Deciduous forested wetlands (34.81 acres) provide 148.62 HUs for bald eagle, black-capped chickadee, mallard, and white-tailed deer. The grassland meadow habitat consists of 5.13 acres and provides 3.38 HUs for Canada goose. An estimated 76.04 acres of conifer forest provides 160.44 HUs for bald eagle and black-capped chickadee, and white-tailed deer. [Table 4](#) summarizes the HEP results for the Pend Oreille Wetlands Wildlife Project. A total of 936.76 baseline habitat units (2.15 HUs/acre) have been protected by the protection and enhancement of this property.

Table 4. HEP results for the Pend Oreille Wetlands Wildlife Project.

Cover Type/ Target Species	HEP Variable	Var. Score	HSI Equation	HSI Score	Acres	HUs
Conifer Forest						
Bald eagle (wintering)	V ₁ - Food	1.00	$[(V_1)^2 * V_2]^{1/3}$	0.84	76.04	63.87
	V ₂ - Perch	0.60				
	V ₃ - Distance to Water	1.00				
	V ₄ - Human Disturbance	0.90				
Bald eagle (breeding)	V ₁ - Food	1.00	$(V_2 * V_3 * V_4)^{1/3}$	0.77	76.04	58.55
	V ₂ - Nest	0.50				
	V ₃ - Distance to Water	1.00				
	V ₄ - Human Disturbance	0.90				
Black-capped chickadee	V ₁ - % Canopy Closure	0.80	Lowest of $(V_1 * V_2)^{1/2}$ or V ₃	0.20	76.04	15.21
	V ₂ - Avg. Tree Height	1.00				
	V ₃ - No. Snags/acre	0.20				
White-tailed deer	V ₁ - % Shrub Crown Cover	0.30	V ₁	0.30	76.04	22.81
Deciduous Forested						

Cover Type/ Target Species	HEP Variable	Var. Score	HSI Equation	HSI Score	Acres	HUs
Wetland						
Bald eagle (wintering)	V ₁ - Food	1.00	$[(V_1)^2 * V_2]^{1/3}$	0.93	34.81	32.37
	V ₂ - Perch	0.80				
	V ₃ - Distance to Water	1.00				
	V ₄ - Human Disturbance	0.90				
Bald eagle (breeding)	V ₁ - Food	1.00	$(V_2 * V_3 * V_4)^{1/3}$	0.82	34.81	28.54
	V ₂ - Nest	0.60				
	V ₃ - Distance to Water	1.00				
	V ₄ - Human Disturbance	0.90				
Black-capped chickadee	V ₁ - % Canopy Closure	1.00	Lowest of $(V_1 * V_2)^{1/2}$ or V ₃	0.92	34.81	32.02
	V ₂ - Avg. Tree Height	0.85				
	V ₃ - No. Snags/acre	1.00				
Mallard	V ₁ - Wetland Type	0.50	Lowest Value	0.60	34.81	20.88
	V ₂ - Nesting Cover	0.80				
	V ₃ - Shoreline Cover	0.60				
	V ₄ - No. of Wetland Types					
White-tailed deer	V ₁ - % Shrub Crown Cover	1.00	V ₁	1.00	34.81	34.81
Scrub-shrub Wetland						
Mallard	V ₁ - Wetland Type	0.50	Lowest Value	0.50	6.04	3.02
	V ₂ - Nesting Cover	0.80				
	V ₃ - Shoreline Cover	0.60				
	V ₄ - No. of Wetland Types					
Yellow warbler	V ₁ - % Shrub Cover	1.00	$(V_1 * V_2 * V_3)^{1/3}$	0.89	6.04	5.37
	V ₂ - Avg. Shrub Height	1.00				
	V ₃ - % Wetland Obligates	0.70				
White-tailed deer	V ₁ - % Shrub Crown Cover	1.00	V ₁	1.00	6.04	6.04
Grassland Meadow						

Pend Oreille Wetlands Wildlife Project - 2005 HEP Report

Cover Type/ Target Species	HEP Variable	Var. Score	HSI Equation	HSI Score	Acres	HUs
Canada goose	V ₁ – Island Nesting Habitat	0.50	$[(V_1+V_2)*V_3]^{1/2}$	0.90	5.13	3.38
	V ₂ – Shoreline Nesting	0.40				
	V ₃ – Brood Rearing Habitat	0.90				
Wet Meadow						
Canada goose	V ₁ – Island Nesting Habitat	0.50	$[(V_1+V_2)*V_3]^{1/2}$	0.90	134.81	121.32
	V ₂ – Shoreline Nesting	0.40				
	V ₃ – Brood Rearing Habitat	0.90				
Mallard	V ₁ - Wetland Type	0.65	Lowest Value	0.65	134.81	87.63
	V ₂ - Nesting Cover	0.80				
	V ₃ - Shoreline Cover	0.90				
Cattail hemi-marsh						
Canada goose	V ₁ – Island Nesting Habitat	0.50	$[(V_1+V_2)*V_3]^{1/2}$	0.90	128.51	115.66
	V ₂ – Shoreline Nesting	0.40				
	V ₃ – Brood Rearing Habitat	0.90				
Mallard	V ₁ - Wetland Type	0.65	Lowest Value	0.65	128.51	83.53
	V ₂ - Nesting Cover	0.80				
	V ₃ - Shoreline Cover	0.90				
Muskrat	V ₁ - % Cover	0.90	Lowest of $(V_1*V_2)^{1/2}$ or $(V_1*V_8)^{1/2}$	0.85	128.51	109.23
	V ₂ - % of Year w/ Water	1.00				
	V ₈ - % Preferred Vegetation	0.80				
Open Water						
Canada goose	V ₁ – Island Nesting Habitat	0.50	$[(V_1+V_2)*V_3]^{1/2}$	0.90	29.97	26.97
	V ₂ – Shoreline Nesting	0.40				
	V ₃ – Brood Rearing Habitat	0.90				
Mallard	V ₁ - Wetland Type	0.65	Lowest Value	0.65	29.97	19.48
	V ₂ - Nesting Cover	0.80				
	V ₃ - Shoreline Cover	0.90				
Muskrat	V ₁ - % Cover	0.90	Lowest of $(V_1*V_2)^{1/2}$ or	0.85	29.97	25.47

Cover Type/ Target Species	HEP Variable	Var. Score	HSI Equation	HSI Score	Acres	HUs
			$(V_1 * V_8)^{1/2}$			
	V ₂ - % of Year w/ Water	1.00				
	V ₈ - % Preferred Vegetation	0.80				
Shoreline						
Canada goose	V ₁ – Island Nesting Habitat	0.50	$[(V_1 + V_2) * V_3]^{1/2}$	0.90	12.04	10.84
	V ₂ – Shoreline Nesting	0.40				
	V ₃ – Brood Rearing Habitat	0.90				
Mallard	V ₁ - Wetland Type	0.65	Lowest Value	0.65	12.04	7.83
	V ₂ - Nesting Cover	0.80				
	V ₃ - Shoreline Cover	0.90				
Islands						
Mallard	V ₁ - Wetland Type	0.65	Lowest Value	0.65	1.25	0.81
	V ₂ - Nesting Cover	0.80				
	V ₃ - Shoreline Cover	0.90				
Canada goose	V ₁ – Island Nesting Habitat	0.50	$[(V_1 + V_2) * V_3]^{1/2}$	0.90	1.25	1.12
	V ₂ – Shoreline Nesting	0.40				
	V ₃ – Brood Rearing Habitat	0.90				
Total						936.76

DISCUSSION

Conifer Forest

An estimated 17.45% of the Pend Oreille Wetlands Wildlife Project is comprised of conifer forest (76.04 acres). This habitat type provides 17.13% (160.44 HUs) of the total baseline HUs available on the Project. Conifer forest provides moderate habitat suitability for bald eagle. Bald eagle habitat suitability is limited by the lack of adequate nest and perch sites (V₂). Conifer forest provides 122.42 HUs for breeding and wintering bald eagle. Black-capped chickadee habitat suitability is poor as reproduction life requisites are limited by the lack of available snags. A total of 15.21 HUs are provided for black-capped chickadee. White-tailed deer habitat suitability is poor as limited preferred browse species are available. A total of 22.81 HUs are provided for whitetails.

Deciduous Forested Wetland

The deciduous forest cover type consists of 34.81 acres and provides 15.86% (148.62 HUs) of the total HUs available. Bald eagle winter habitat suitability is near optimal while the lack of adequate nest sites limits bald eagle reproductive habitat suitability. Black-capped chickadee

habitat suitability is near optimal. A total of 60.91 HUs and 32.02 HUs are provided for bald eagle and black-capped chickadee, respectively. Mallard nesting cover in the deciduous forested wetland is moderate. This cover type provides mallard with a total of 20.88 HUs. Browse availability is optimal for white-tailed deer and 34.81 HUs are provided by the deciduous forested wetland habitat type.

Scrub-shrub Wetland

Scrub-shrub vegetation consists of 6.04 acres on the Pend Oreille Wetlands Wildlife Project and provides a total of 14.43 HUs for mallard, yellow warbler, and white-tailed deer. This cover type provides moderate suitability for mallard (3.02 HUs) and above moderate habitat suitability for yellow warbler (5.37 HUs). Habitat suitability for yellow warblers is limited by a lack of hydrophytic shrubs (V₃). White-tailed deer are provided with optimal habitat conditions and 6.04 HUs.

Grassland Meadow

The grassland meadow habitat type (5.13 acres) is near optimal for Canada goose and provides 3.38 HUs.

Wet Meadow

Wet meadow habitat provides a total of 208.95 HUs for Canada goose and mallard and represents 22.30% of the total HUs on the Project. An estimated 134.81 acres of this cover type provides near optimal habitat suitability and 121.32 HUs for Canada goose. Wet meadow also provides 87.63 HUs for mallard.

Cattail Hemi-marsh

The cattail hemi-marsh consists of 128.51 acres and provides the majority (32.92%) of the total HUs on the Project. This habitat type provides a total of 308.42 HUs for Canada goose, mallard, and muskrat. Habitat conditions for Canada goose are near optimal and 115.66 HUs are provided by this habitat type. The marsh also provides 83.53 HUs for mallard, the habitat suitability for which is limited by the length of time surface water is present (V₁). A total of 109.23 HUs are provided for muskrat and habitat suitability for this species is above moderate.

Open Water

Open water habitat provides 71.92 HUs for Canada goose (26.97 HUs), mallard (19.48 HUs), and muskrat (25.47 HUs).

Shoreline

Shoreline habitat (12.04 acres) consists of wet meadow and provides a total of 10.84 HUs for Canada goose and 7.83 HUs for mallard.

Island

The presence of stable islands plays a significant role in Canada goose brood habitat suitability. The islands also consist of wet meadow habitat and provide Canada goose broods protection from predators. A total of 1.12 HUs are provided for Canada goose. Habitat suitability is limited by a lack of cover. Mallards are provided with 0.81 HUs.

ACKNOWLEDGMENTS

I would like to extend my appreciation to each of the HEP team members, without whose participation this evaluation could not have been accomplished. Team members include Anna and Scott (Washington Department of Fish and Wildlife), and Roy Finley, Neil Lockwood, Brian Merson, and Sonny Finley (Kalispel Tribe of Indians).

LITERATURE CITED

- Daubenmire, R. 1959. A canopy-coverage method of vegetation analysis. *Northwest Science* 33:43-64.
- Lapin, L. 1980. *Statistics: meaning and method*. Harcourt Brace Jovanovich, Inc. New York, NY. 543 pp.
- Martin, R. C., H. J. Hansen, and G. A. Meuleman. 1988. Albeni Falls wildlife protection, mitigation and enhancement plan. Project no. 87-43. Bonneville Power Administration. 123 pp.
- Merker, C. 1993. Kalispel Tribe of Indians wildlife mitigation and restoration for Albeni Falls dam: Flying Goose Ranch, Phase I. Project no. 01-061. Bonneville Power Administration. 50 pp.
- NPPC. Northwest Power Planning Council. 1994. Columbia River Basin fish and wildlife program. NPPC 94-55. Portland, OR.
- Robel, R.J., J. N. Briggs, A. D. Dayton, and L. C. Hulbert. 1970. Relationships between visual obstruction measurements and weight of grassland vegetation. *J. Range Manage.* 23:295-297.
- USFWS. U. S. Fish and Wildlife Service. 1980a. Habitat as a basis for environmental assessment. *Ecological Services Manual* 101. U. S. Fish and Wildlife Service Division of Ecological Services, Washington D.C.
- _____. 1980b. Habitat evaluation procedures. *Ecological Services Manual* 102. U. S. Fish and Wildlife Service Division of Ecological Services, Washington D.C.

APPENDIX A
Habitat Suitability Index Models

Bald Eagle Habitat Suitability Index Model

Overview

This model recognizes that proximity to prey base, quality of prey base, quality of nesting and perching habitat, and amount of human disturbance are the most important components determining the quality of breeding and wintering bald eagle habitat.

This HSI model was taken from:

Martin, R. C., H. J. Hansen, and G. A. Meuleman. 1988. Albeni Falls wildlife protection, mitigation and enhancement plan. Project no. 87-43. Bonneville Power Administration. 123 pp.

V₁ Breeding and wintering food requirements

Good. Abundant prey base (ungulate carrion, fish of several species, waterfowl, small mammals) available throughout the year within three miles of potential nest/perch site.

SI value = 1.0.

Moderate. Moderate prey availability within three miles of potential nest/perch site. Water sometimes frozen over early in the nesting/perching period, but some ungulate carrion available during that time. Alternative food sources may be within five miles of nest or perch.

SI value = 0.8.

Fair. Minimal prey base within five miles of potential nest/perch site. Water frozen over late into the nesting cycle without alternative food sources.

SI value = 0.3.

Poor. Insufficient prey base to sustain eagles.

SI value = 0.0.

V₂ Nest/perch structure: type, form, density

Best. Old growth spruce, Douglas fir, or ponderosa pine in coniferous areas; old growth cottonwood in deciduous stands; stands dense and continuous and exceeding 10 acres in size.

SI value = 1.0.

Good. Scattered old growth trees in stands of moderate (mature) aged trees

(cottonwoods, spruce, fir, ponderosa pine) exceeding 10 acres in size.

SI value = 0.9.

Fair. Scattered old growth trees (cottonwoods, spruce, fir, ponderosa pine) in open areas (without screening from younger aged trees).

SI value = 0.6

Poor. Dominant trees available are old growth lodgepole pine in coniferous areas or aspen in deciduous stands.

SI value = 0.4.

Minimal. Potential nest or perch structures are shrubs or young trees, no screening present.

SI value = 0.0.

V₃ Distance to water body with sufficient prey availability

A. < 1 kilometer. SI value = 1.0.

B. 2 kilometers. SI value = 0.9.

C. 3 kilometers. SI value = 0.6.

D. 4 kilometers. SI value = 0.2.

E. > 4.5 kilometers. SI value = 0.0.

V₄ Human activity level

Good. Natural vegetation dominates area; no permanent developments or human structures; no human activity within the area during the nesting period.

SI value = 1.0.

Moderate. Area of farming ground or pasture surrounds site; occasional use of area by predictable humans, such as a farmer or stockman; human activity occurs late in the eagle nesting cycle.

SI value = 0.9.

Fair. Dispersed recreation campsites or trails, or occasionally used boat docks within vicinity of potential nest or perch; activity occurs during brooding period only.

SI value = 0.4.

Poor. Developed sites, e.g. campgrounds, boat launches, etc., within vicinity of potential nest or perch; heavy human use of area during incubation period.

SI value = 0.0.

Equation

Winter food suitability index value = V_1

Winter perch suitability index value = V_2

Wintering bald eagle habitat suitability index value = $[(V_1)^2 \times V_2]^{1/3}$

Reproductive suitability index value = $(V_2 \times V_3 \times V_4)^{1/3}$

Breeding bald eagle habitat suitability index value is the lower of food or reproductive suitability index values.

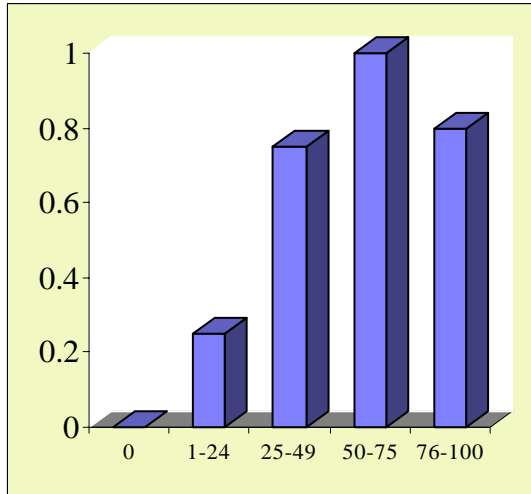
Black-capped Chickadee Habitat Suitability Index Model

Overview

This model considers the ability of the habitat to meet the food and reproductive needs of the black-capped chickadee as an indication of the overall habitat suitability. Cover needs are assumed to be met by the food and reproductive requisites and water is assumed not to be limiting. The food component assesses vegetation conditions, and the reproduction component assesses the abundance of suitable snags.

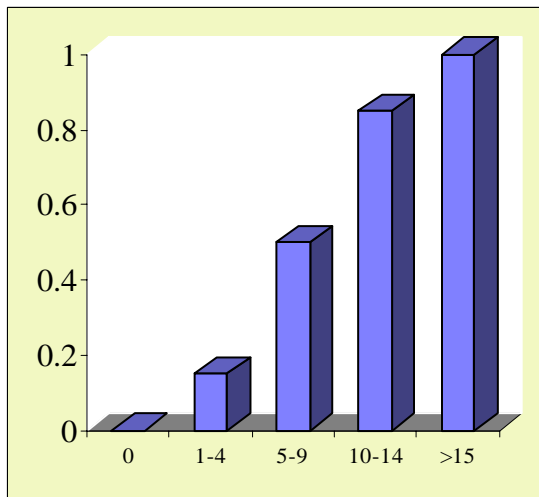
This HSI model was modified into a histogram from:

Schroeder R. L., 1983. Habitat suitability index models: black-capped chickadee. U. S. Dept. Int., Fish Wildl. Serv. FWS/OBS-82/10.37. 21 pp.



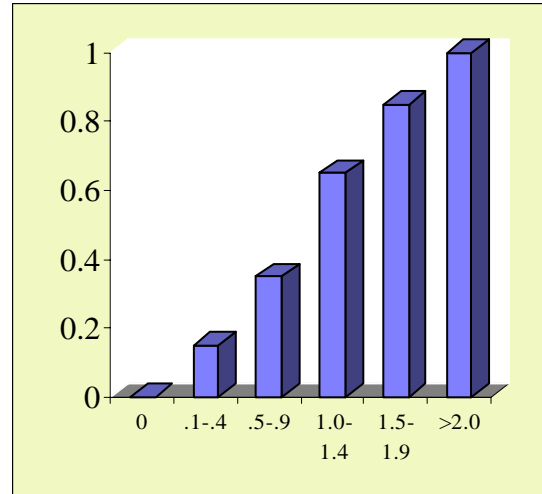
V₁ Percent tree canopy closure

Percent tree canopy closure is the percent of canopy closed by vertical projection of the canopy in the cover type.



V₂ Average height of overstory trees

The average height of overstory trees is the average height from the ground of the overstory trees present in the cover type.



V₃ Number of snags 10 – 25 cm/0.4 ha.

Number of snags 10 – 25 cm/0.4 ha. is the number of snags usable by black-capped chickadees in the cover type.

Equation

<u>Life Requisite</u>	<u>Cover Type</u>	<u>Equation</u>
Food	DF, DFW	$(V_1 \times V_2)^{1/2}$
Reproduction	DF, DFW	V_3

The Habitat Suitability Index value is equal to the lowest life requisite value.

Canada Goose Habitat Suitability Index Model

Overview

This model recognizes that the quality of shoreline habitat, the presence of islands, and the quality of brood-rearing habitat are the most important components determining the quality of Canada goose breeding habitat.

This model was taken from:

Martin, R. C., H. J. Hansen, and G. A. Meuleman. 1988. Albeni Falls wildlife protection, mitigation and enhancement plan. Project no. 87-43. Bonneville Power Administration. 123 pp.

V₁ Island nesting habitat

Good. Stable islands present, relatively high shoreline/area ratio; ground cover on portions of islands 4 to 16 inches high; brood habitat within 1 mile of area.

SI value between 0.8 and 1.0.

Fair. Stable islands present; relatively low shoreline/area ratio; or cover on islands < 4 or > 16 inches in height or brood habitat within 1 to 2 miles from area.

SI value between 0.5 and 0.7.

Poor. No stable islands present: or islands with limited or no cover; or brood habitat \geq 2 miles from area.

SI value between 0.0 and 0.4.

V₂ Shoreline nesting habitat

Good. Portions of cover within 10 meters of water; ground cover 4 to 16 inches high; adjacent wetland buffer within 50 meters of shoreline, may include sloughs of open water; brood habitat within 1 mile.

SI value = 0.5.

Fair. Portions of shoreline cover within 10 meters of water; ground cover 4 to 16 inches high; adjacent wetland buffer within 50 meters of shoreline (Does not include open water wetlands); or brood habitat 1 to 2 miles away.

SI value between 0.3 and 0.4.

Poor. No shoreline cover or shoreline cover taller than 16 inches and/or shorter than 4 inches; or wetland buffer > 50

meters to absent or brood habitat > 2 miles away.

SI value between 0.0 and 0.2.

V₃ Brood rearing habitat

Good. Brood pasture easily accessible from main water body; foraging zones common; vegetation < 4 inches tall; average > 1 acre in size; open water wetlands are present within 1 mile of nesting habitat.

SI value between 0.7 and 1.0.

Fair. Less than above and/or no open water wetlands; or area is 1 to 2 mile miles from nesting habitat.

SI value between 0.4 and 0.6.

Poor. Little or no brooding area; or area is \geq 2 miles from nesting habitat.

SI value between 0.0 and 0.3.

Equation

The Habitat Suitability Index value = $[(V_1 + V_2) V_3]^{1/2}$

**Mallard Habitat Suitability Index Model
(Breeding Season Only)**

Life Requisite Values

Food (V_1): Related to the area of various wetland types within a sampling area that are shallow enough for a dabbling duck to feed (<60 cm water depth is optimum) during the breeding season. Model assumes that seasonally flooded wetlands (i.e. wet meadows, etc.) provide a better food source than permanently flooded wetlands.

Reproduction (V_2): Related to the height and density of nesting cover (residual vegetation).

Cover (V_3): Related to the percent of shoreline dominated by emergent or scrub-shrub wetland vegetation. Shorelines with little or no vegetation provide marginal escape cover for broods. Only wetlands with open water available during the brooding season should be evaluated.

Habitat Evaluation Criteria

Food (V_1): Seasonal wetlands, which produce the highest quantities of aquatic invertebrates, are preferred feeding habitat for laying mallard hens. The density of mallard pairs/hectare is assumed to be higher in seasonal rather than semi-permanent wetlands.

A – Temporarily Flooded: Surface water is present for brief periods during growing season.

SI value = 0.3

B – Seasonally Flooded: Surface water is present for extended periods especially early in the growing season, but is absent by the end of the season in most years.

SI value = 1.0

C – Semi-permanently Flooded: Surface water persists throughout the growing season during most years.

SI value = 0.8

D – Permanently Flooded: Water covers the land surface throughout the year in all years. Vegetation is composed of obligate hydrophytes.

SI value = 0.5

Reproduction (V_2): Mallard nesting success is the highest in cover with the greatest height-density of residual vegetation (i.e. concealed from all directions). The Robel method was used as the visual obstruction technique (height and density). Reproduction value (V_2) is a function of the height and density of nesting cover (residual vegetation).

Shoreline Cover (V_3): Mallard broods will utilize wetlands having sparse to dense emergent or scrub-shrub vegetation. Wetlands devoid of wetland vegetation or open water are usually avoided. Marshes with shorelines bare of emergent vegetation are used less.

Measure the percent of shoreline dominated by emergent and/or scrub/shrub wetland vegetation for brood rearing wetlands (>2 acres in size with some open water during brooding season):

A – 50 to 100% of shoreline	SI value = 0.7 to 1.0
B – 15 to 50% of shoreline	SI value = 0.4 to 0.6
C – 0% to 15% of shoreline	SI value = 0.1 to 0.3

The habitat suitability index is the lowest V_n value.

Suggested Measurement Techniques

Large sampling areas that are representative should be randomly selected. At least four sampling areas per area should be used. Variables V_1 and V_3 can be measured from aerial photography with field ground truthing. Variable V_2 should be measured in the field in upland habitat adjacent to wetlands. Specific suggestions on measurement techniques of each variable are provided below.

- V_1 = Calculate area of various wetland types within each sampling area using a digitizer or dot grid or planimeter. Multiply each wetland area by its SI for a weighted value. Sum the weighted values in the sampling area and divide by the total wetland acreage for a weighted sample area SI value.
- V_2 = Field measure height and density of residual vegetation using the visual obstruction technique (Robel pole used here). Sampling areas should be located on aerial photographs.
- V_3 = Measure the amount of shoreline vegetation for each wetland type >2 acres in size and with some open water during brood-rearing season from aerial photographs. Calculate SI value for each wetland based on measurements. Multiple SI value times wetland area for a weighted value. A standard for lacustrine systems (i.e. littoral zone or 100 meters from shore) will need to be established as providing brood-rearing habitat. Sum weighted values in each sampling area and divide by total wetland acreage for a sample area SI value. Some field verification of shoreline vegetation should be conducted.

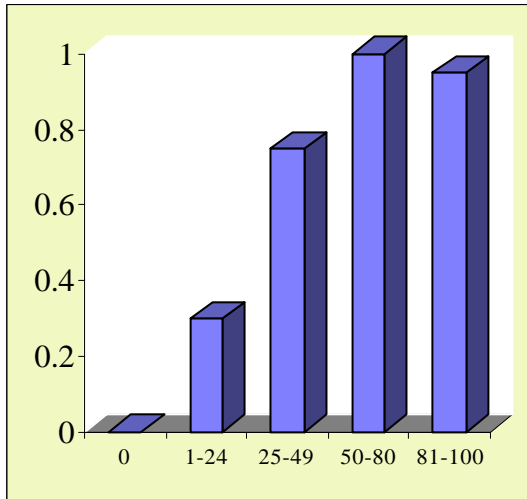
Muskrat Habitat Suitability Index Model

Overview

Year-round habitat requirements of the muskrat can be fulfilled within wetland habitats that provide herbaceous vegetation and permanent surface water with minor fluctuations in water levels. Wetlands characterized by seasonal drying, an absence of emergent vegetation, or both, have less potential as year-round muskrat habitat than wetlands with permanent water and an abundance of emergent vegetation. It is assumed that food and cover are interdependent characteristics of the muskrat's habitat and that measures of vegetative abundance and water permanence within a wetland can be aggregated to reflect habitat conditions favoring maintenance of the muskrat's food and cover requirements. The reproductive habitat requirements of the species are assumed to be met when adequate water, food, and cover conditions are present.

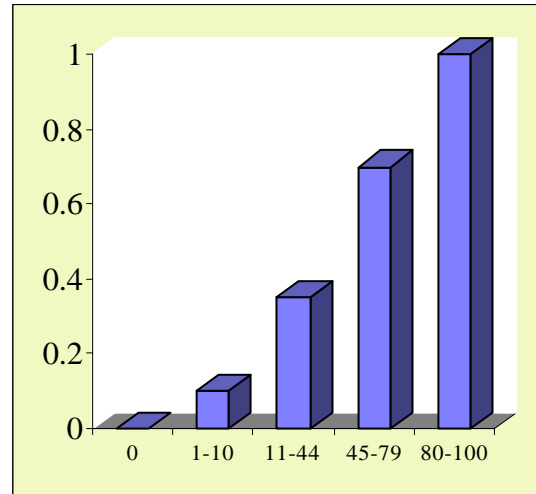
This model was modified into a histogram from:

Allen, A. W., and R. D. Hoffman. 1984. Habitat suitability index models: Muskrat. U.S. Fish Wildl. Serv. FWS/OBS-82/10.46. 27 pp.



V₁ Percent canopy cover of emergent herbaceous vegetation

Percent canopy cover of emergent herbaceous vegetation is the percent of the water surface shaded by a vertical projection of the canopies of all emergent herbaceous vegetation, both persistent and non-persistent.



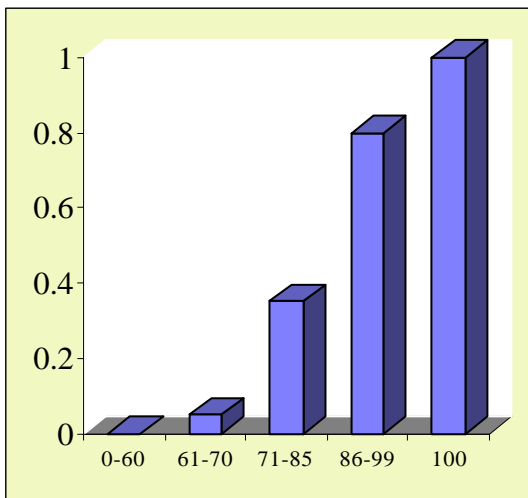
V₈ Percent of emergent herbaceous vegetation of preferred types

Percent of emergent herbaceous vegetation consisting of Olney bulrush, common threesquare bulrush, or cattail considering both persistent and non-persistent types.

Equation

<u>Life Requisite</u>	<u>Cover Type</u>	<u>Equation</u>
Cover	HW	$(V_1 \times V_2)^{1/2}$
Food	HW	$(V_1 \times V_8)^{1/2}$

The Habitat Suitability Index value is equal to the lowest life requisite value.



V₂ Percent of year with surface water present

Percent of year with surface water present is the proportion of the year in which the cover type has surface water present.

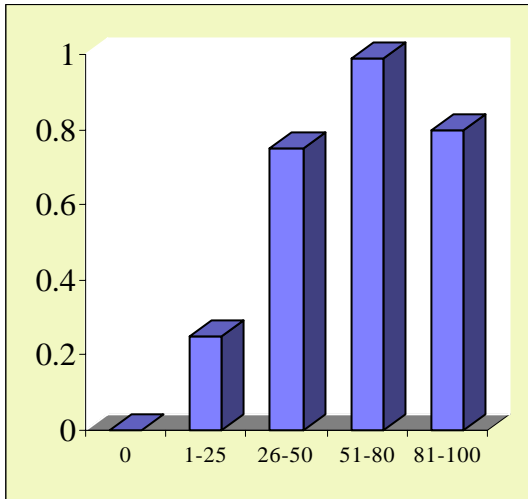
Yellow Warbler Habitat Suitability Index Model

Overview

It is assumed that optimal habitats contain 100% hydrophytic deciduous shrubs and that habitats with no hydrophytic shrubs will provide marginal suitability. Shrub densities between 60 and 80% crown cover are assumed to be optimal. As shrub densities approach zero cover suitability also approaches zero. Totally closed shrub canopies are assumed to be of only moderate suitability, due to the probable restrictions on movement of the warblers in those conditions. Shrub heights of 2 m or greater are assumed to be optimal, and suitability will decrease as the heights decrease.

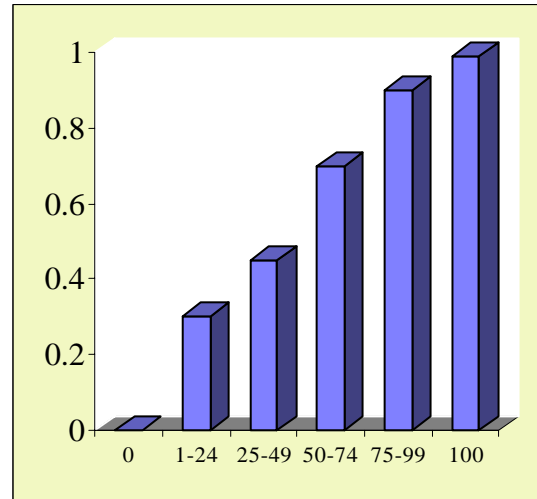
This model was modified into a histogram from:

Schroeder, R. L. 1982. Habitat suitability index models: yellow warbler. U.S. Dept. Int., Fish Wildl. Serv. FWS/OBS-82/10.27. 7 pp.



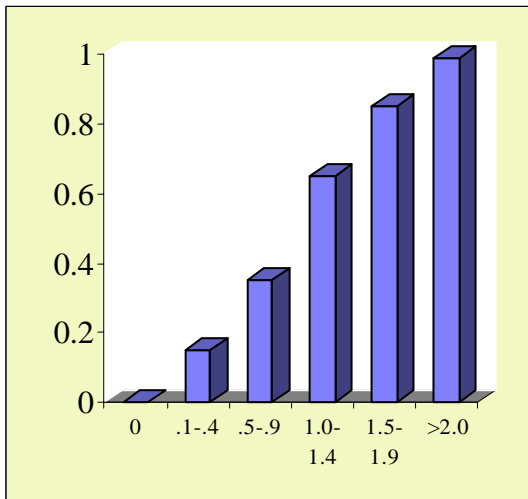
V₁ Percent deciduous shrub crown cover

Percent deciduous shrub crown cover is the percent of the ground shaded by a vertical projection of the canopies of woody deciduous vegetation that is less



V₃ Percent of deciduous shrub canopy comprised of hydrophytic shrubs

Percent of deciduous shrub canopy comprised of hydrophytic shrubs is the relative percent of the amount of hydrophytic shrubs as compared to all shrubs based on V₂.



than 5 m in height.

V₂ Average height of deciduous shrub canopy

Average height of deciduous shrub canopy is the average height from the ground to the top of those shrubs which comprise the uppermost shrub canopy.

Equation

The Habitat Suitability Index value = $(V_1 \times V_2 \times V_3)^{1/2}$

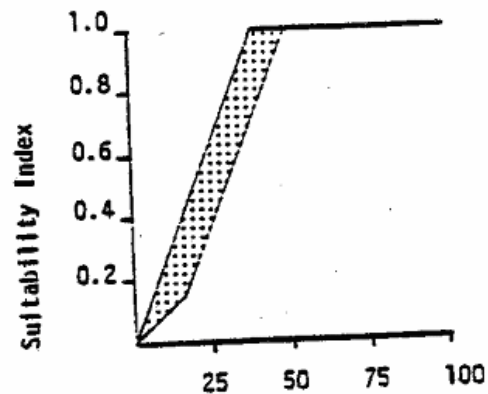
.

White-tailed Deer Habitat Suitability Index Model (Winter Only)

Overview

This Suitability Index curve recognizes that the most important components determining the quality of white-tailed deer winter habitat are available browse, snow depth, and security cover. It is assumed that snow depth and cover do not limit white-tailed deer in the area surrounding Lake Pend Oreille, compared to the importance of available browse. Therefore, this Suitability Index alone is used to determine white-tailed deer winter habitat quality in the area around Albeni Falls Dam.

DF,DFW, [V₄] % shrub crown cover
DSW < 1.5 m (5 ft) in
height.



V₄ Percent shrub crown cover < 1.5 m (5 ft.) in height