
**Pacific Northwest
National Laboratory**

Operated by Battelle for the
U.S. Department of Energy

First Quarter Hanford Seismic Report for Fiscal Year 2008

Pacific Northwest National Laboratory
Hanford Seismic Assessment Team

A. C. Rohay
M. D. Sweeney
D. C. Hartshorn
R. E. Clayton
J. L. Devary

March 2008



Prepared for the U.S. Department of Energy
under Contract DE-AC05-76RL01830

DISCLAIMER

This report was prepared as an account of work sponsored by an agency of the United States Government. Neither the United States Government nor any agency thereof, nor Battelle Memorial Institute, nor any of their employees, makes **any warranty, express or implied, or assumes any legal liability or responsibility for the accuracy, completeness, or usefulness of any information, apparatus, product, or process disclosed, or represents that its use would not infringe privately owned rights.** Reference herein to any specific commercial product, process, or service by trade name, trademark, manufacturer, or otherwise does not necessarily constitute or imply its endorsement, recommendation, or favoring by the United States Government or any agency thereof, or Battelle Memorial Institute. The views and opinions of authors expressed herein do not necessarily state or reflect those of the United States Government or any agency thereof.

PACIFIC NORTHWEST NATIONAL LABORATORY
operated by
BATTELLE
for the
UNITED STATES DEPARTMENT OF ENERGY
under Contract DE-AC05-76RL01830

Printed in the United States of America

**Available to DOE and DOE contractors from the
Office of Scientific and Technical Information,
P.O. Box 62, Oak Ridge, TN 37831-0062;
ph: (865) 576-8401
fax: (865) 576-5728
email: reports@adonis.osti.gov**

**Available to the public from the National Technical Information Service,
U.S. Department of Commerce, 5285 Port Royal Rd., Springfield, VA 22161
ph: (800) 553-6847
fax: (703) 605-6900
email: orders@ntis.fedworld.gov
online ordering: <http://www.ntis.gov/ordering.htm>**



This document was printed on recycled paper.

(9/2003)

First Quarter Hanford Seismic Report for Fiscal Year 2008

A. C. Rohay
M. D. Sweeney
D. C. Hartshorn
R. E. Clayton
J. L. Devary

March 2008

Prepared for
the U.S. Department of Energy
under Contract DE-AC05-76RL01830

Pacific Northwest National Laboratory
Richland, Washington 99352

Summary

The Hanford Seismic Assessment Program (HSAP) provides an uninterrupted collection of high-quality raw and processed seismic data from the Hanford Seismic Network for the U.S. Department of Energy and its contractors. The Hanford Seismic Assessment Team locates and identifies sources of seismic activity and monitors changes in the historical pattern of seismic activity at the Hanford Site. The data are compiled, archived, and published for use by the Hanford Site for waste management, natural phenomena hazards assessments, and engineering design and construction. In addition, the seismic monitoring organization works with the Hanford Site Emergency Services Organization to provide assistance in the event of a significant earthquake on the Hanford Site. The Hanford Seismic Network and the Eastern Washington Regional Network consist of 41 individual sensor sites and 15 radio relay sites maintained by the Hanford Seismic Assessment Team.

For the Hanford Seismic Network, 44 local earthquakes were recorded during the first quarter of fiscal year 2008. A total of 31 micro earthquakes were recorded within the Rattlesnake Mountain swarm area at depths in the 4-8 km range, most likely within the pre-basalt sediments. The largest event recorded by the network during the first quarter (November 25, 2007 - magnitude 1.5 M_c) was located within this swarm area at a depth of 4.3 km. With regard to the depth distribution, 4 earthquakes occurred at shallow depths (less than 4 km, most likely in the Columbia River basalts), 35 earthquakes at intermediate depths (between 4 and 9 km, most likely in the pre-basalt sediments), and 5 earthquakes were located at depths greater than 9 km, within the crystalline basement. Geographically, 38 earthquakes occurred in swarm areas and 6 earthquakes were classified as random events.

Abbreviations and Acronyms

BWIP	Basalt Waste Isolation Project
CRBG	Columbia River Basalt Group
DOE	U.S. Department of Energy
ETNA	strong motion accelerometer manufactured by Kinometrics
EWRN	Eastern Washington Regional Network
FY	fiscal year
GPRS	General Packet Radio Service
GPS	Global Positioning System
HSAP	Hanford Seismic Assessment Program
HSN	Hanford Seismic Network
IRIS	Incorporated Research Institutions for Seismology
LIGO	Laser Interferometric Gravitational-Wave Observatory
M_c	coda-length magnitude
M_L	local magnitude
NSF	National Science Foundation
PNNL	Pacific Northwest National Laboratory
SMA	strong motion accelerometer
USGS	U.S. Geological Survey
UTC	Coordinated Universal Time
UW	University of Washington
WHC	Westinghouse Hanford Company

Contents

Summary	iii
Abbreviations and Acronyms	v
1.0 Introduction.....	1.1
1.1 Mission	1.1
1.2 History of Monitoring Seismic Activity at Hanford.....	1.1
1.3 Documentation and Reports	1.2
2.0 Network Operations	2.1
2.1 Seismometer Stations	2.1
2.1.1 Station Maintenance	2.5
2.1.2 Data Acquisition.....	2.6
2.2 Strong Motion Accelerometer Stations	2.7
2.2.1 Location.....	2.7
2.2.2 Station Design	2.7
2.2.3 Strong Motion Accelerometer Operations Center	2.9
2.2.4 Strong Motion Operational Characteristics	2.9
3.0 Geology and Tectonic Analysis	3.1
3.1 Earthquake Stratigraphy	3.1
3.2 Geologic Structure Beneath the Monitored Area	3.1
3.3 Tectonic Pattern.....	3.4
4.0 Earthquake Catalog Description	4.1
4.1 Coda-Length Magnitude.....	4.1
4.2 Velocity Model.....	4.1
4.3 Quality Factors (Q).....	4.4
5.0 Seismic Activity – First Quarter FY 2008	5.1
5.1 Summary	5.1
5.2 First Quarter FY08 Earthquakes.....	5.1
5.2.1 Location and Depth of Earthquakes	5.2
5.2.2 Major Anticlinal Ridges	5.2
5.2.3 Earthquake Swarm Areas	5.2
5.2.4 Random or Floating Events	5.5
6.0 Strong Motion Accelerometer Operations	6.1
7.0 Capabilities in the Event of a Significant Earthquake.....	7.1
8.0 References	8.1

Figures

2.1	Seismometer and Strong Motion Accelerometer Stations in the Hanford Seismic Network	2.2
2.2	Seismometer Stations in the Eastern Washington Regional Network	2.4
2.3	Battery Replacement at Ephrata Seismometer Station	2.5
2.4	Schematic Diagram of a Strong Motion Accelerometer Installation	2.9
3.1	Physical and Structural Geology of the Hanford Site, Washington.....	3.2
3.2	Geologic Cross Sections through the Columbia Basin (Reidel et al. 1994)	3.3
5.1	Earthquakes Occurring in the Hanford Monitoring Area between October 1, 2007 and December, 2007	5.3
5.2	Three-Dimensional Depiction of Earthquakes Occurring in the Hanford Monitoring Area between October 1, 2007 and December, 2007	5.4

Tables

2.1	Seismometer Stations in the Hanford Seismic Network	2.1
2.2	Seismometer Stations in the Eastern Washington Regional Network	2.3
2.3	Free-Field Strong Motion Accelerometer Sites	2.7
2.4	Instrument Parameters for the Kinematics ETNA System in the Hanford SMA Network	2.8
3.1	Thicknesses of Stratigraphic Units in the Monitoring Area	3.4
4.1	Local Seismic Data, October 1 - December 31, 2007.....	4.2
4.2	Crustal Velocity Model for Eastern Washington.....	4.5
5.1	Depth Distribution of Local Earthquakes	5.1
5.2	Earthquake Locations for FY 2008.....	5.2

1.0 Introduction

This report covers the locations of seismicity within the Hanford monitoring region of south-central Washington for the first quarter of fiscal year (FY) 2008 and provides the geologic interpretations of those earthquakes.

1.1 Mission

The principal mission of the Hanford Seismic Assessment Program (HSAP) is to maintain the seismometer and strong motion accelerometer (SMA) sites, report data from measured events, and provide assistance in the event of an earthquake. This mission supports the U.S. Department of Energy (DOE) and the other Hanford contractors in their compliance with DOE Order 420.1B, Chapter IV, Section 3.d “Seismic Detection” and DOE Order G 420.1-1, Section 4.7, “Emergency Preparedness and Emergency Communications.” DOE Order 420.1B requires facilities or sites with hazardous materials to maintain instrumentation or other means to detect and record the occurrence and severity of the seismic event. The HSAP maintains the seismic network located on and around the Hanford Site. The data collected from the seismic network can be used to support facility or site operations to protect the public, workers, and the environment from the impact of seismic events.

In addition, the HSAP provides an uninterrupted collection of high-quality raw seismic data from the Hanford Seismic Network (HSN) located on and around the Hanford Site, and the Eastern Washington Regional Network (EWRN). The program provides interpretations of seismic events from the Hanford Site and vicinity, locates and identifies sources of seismic activity, monitors changes in the historical pattern of seismic activity, and builds a “local” earthquake database (processed data) that is permanently archived. The focus of this report is the precise location of earthquakes proximal to or on the Hanford Site, specifically between 46 degrees and 47 degrees north latitude and between 119 degrees and 120 degrees west longitude. Data from the EWRN and other seismic networks in the northwest provide the Seismic Assessment Project with necessary regional input for the seismic hazards analysis at the Hanford Site. These seismic data are used to support Hanford Site contractors for waste management activities, natural phenomena hazards assessments, and engineering design and construction.

1.2 History of Monitoring Seismic Activity at Hanford

Assessing seismic activity at the Hanford Site was initiated in 1969 by the U.S. Geological Survey (USGS) under a contract with the U.S. Atomic Energy Commission. In 1975, the University of Washington (UW) assumed responsibility for the network and subsequently expanded it. In 1979, the Basalt Waste Isolation Project (BWIP) became responsible for collecting seismic data for the Hanford Site as part of site characterization activities. Rockwell Hanford Operations, followed by Westinghouse Hanford Company (WHC), operated the local network and were the contract technical advisors for the EWRN operated and maintained by UW. Funding ended for BWIP in December 1988; the seismic program (including the UW contract) was transferred to the WHC Environmental Division. Maintenance responsibilities for the EWRN also were assigned to WHC, who made major upgrades to EWRN sites.

Effective October 1, 1996, all seismic assessment activities were transferred to the Pacific Northwest National Laboratory (PNNL).¹

The Hanford SMA network was constructed during 1997, becoming operational in May 1997. It was shut down in fiscal year 1998 due to lack of funding but became operational again in fiscal year 1999 and has operated continuously since that time.

1.3 Documentation and Reports

The HSAP issues quarterly reports of local activity, an annual catalog of earthquake activity in southeastern Washington, and special-interest bulletins on local seismic events. This includes information and special reports as requested by DOE and Hanford contractors. Earthquake information provided in these reports is subject to revision as new information becomes available. In addition, an archive of all seismic data from the HSAP is maintained by PNNL on computer servers.

¹ Pacific Northwest National Laboratory is operated by Battelle for the U.S. Department of Energy under Contract DE-AC05-76RL01830.

2.0 Network Operations

2.1 Seismometer Stations

The seismic network consists of two types of earthquake sensors—seismometers and strong motion accelerometers (SMAs). Seismometers are designed primarily to detect micro earthquakes near Hanford recording seismograms that are used to determine the magnitudes and locations of seismic events. SMA stations are designed to measure ground motion and are discussed in Section 2.2.

The HSN and the EWRN consist of 41 seismometer stations. Most stations reside in remote locations and require solar panels and batteries for power. The HSN includes 23 stations (Table 2.1 and Figure 2.1), and the EWRN consists of 36 stations (Table 2.2 and Figure 2.2). Eighteen stations are shared by both networks. Note that the Bickelton (BLT) station is shown on Figure 2.2.

Table 2.1. Seismometer Stations in the Hanford Seismic Network

Station ^(a)	Latitude Deg. Min. N	Longitude Deg. Min. W	Elevation (m)	Station Name
BEN	46N31.13	119W43.02	340	Benson Ranch
BLT	45N54.91	120W10.55	659	Bickelton
BRV	46N29.12	119W59.47	920	Black Rock Valley
BVW	46N48.66	119W52.99	670	Beverly
CRF	46N49.50	119W23.22	189	Corfu
ET3	46N34.64	118W56.25	286	Eltopia Three
FHE ^(b)	46N57.11	119W29.82	455	Frenchman Hills East
GBB ^(b)	46N36.49	119W37.62	177	Gable Butte
GBL	46N35.92	119W27.58	330	Gable Mountain
H2O	46N23.75	119W25.38	158	Water
LOC	46N43.02	119W25.85	210	Locke Island
MDW	46N36.79	119W45.66	330	Midway
MJ2	46N33.45	119W21.54	146	May Junction Two
OT3	46N40.14	119W13.98	322	Othello Three
PRO	46N12.73	119W41.15	550	Prosser
RED	46N17.92	119W26.30	366	Red Mountain
RSW	46N23.67	119W35.48	1,045	Rattlesnake Mountain
SNI	46N27.85	119W39.60	312	Snively Ranch
VT2	46N58.04	119W58.95	387	Vantage Two
WA2	46N45.32	119W33.94	244	Wahluke Slope
WIW	46N25.76	119W17.26	128	Wooded Island
WRD	46N58.20	119W08.69	375	Warden
YPT	46N02.93	118W57.73	325	Yellepit
(a) The first column is the alphanumeric seismic station designator. The latitude and longitude, elevation above sea level in meters, and the full station name follow this. The locations of the stations all are in Washington; locations were derived from the Global Positioning System (GPS).				
(b) Three-component station.				

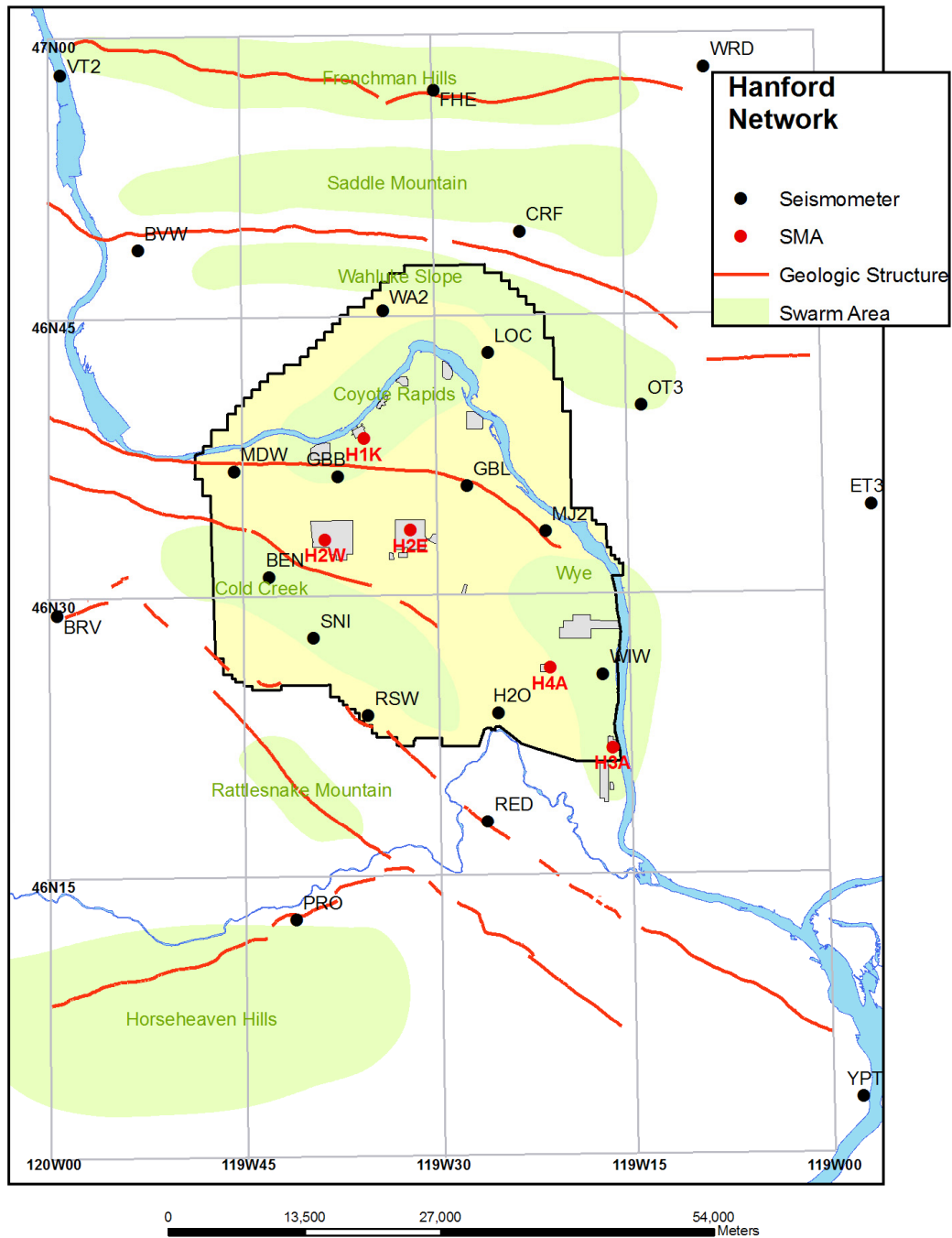


Figure 2.1. Seismometer and Strong Motion Accelerometer Stations in the Hanford Seismic Network

Table 2.2. Seismometer Stations in the Eastern Washington Regional Network

Station ^(a)	Latitude Deg. Min. N.	Longitude Deg. Min. W.	Elevation (m)	Station Name
BLT	45N54.91	120W10.55	659	Bickleton
BRV	46N29.12	119W59.47	920	Black Rock Valley
BVW	46N48.66	119W52.99	670	Beverly
CBS	47N48.26	120W02.50	1,067	Chelan Butte South
CRF	46N49.50	119W23.22	189	Corfu
DPW	47N52.25	118W12.17	892	Davenport
DY2	47N59.11	119W46.28	890	Dyer Hill Two
ELL	46N54.58	120W33.98	789	Ellensburg
EPH	47N21.38	119W35.76	661	Ephrata
ET3	46N34.64	118W56.25	286	Eltopia Three
ETW	47N36.26	120W19.94	1,477	Entiat
FHE ^(b)	46N57.11	119W29.82	455	Frenchman Hills East
GBL	46N35.92	119W27.58	330	Gable Mountain
LNO	45N52.31	118W17.11	771	Linton Mountain Oregon
LOC	46N43.02	119W25.85	210	Locke Island
MDW	46N36.79	119W45.66	330	Midway
MJ2	46N33.45	119W21.54	146	May Junction Two
MOX	46N34.64	120W17.89	501	Moxee City
NAC	46N43.99	120W49.42	728	Naches
NEL	48N04.21	120W20.41	1,500	Nelson Butte
OD2	47N23.26	118W42.58	553	Odessa Two
OT3	46N40.14	119W13.98	322	Othello Three
PAT2	45N53.03	119W45.40	259	Paterson Two
PRO	46N12.73	119W41.15	550	Prosser
RSW	46N23.67	119W35.48	1,045	Rattlesnake Mountain
SAW	47N42.10	119W24.03	701	St. Andrews
TBM	47N10.20	120W35.88	1,006	Table Mountain
TRW	46N17.32	120W32.31	723	Toppenish Ridge
TWW	47N08.29	120W52.10	1,027	Teanaway
VT2	46N58.04	119W58.95	387	Vantage Two
WA2	46N45.32	119W33.94	244	Wahluke Slope Two
WAT	47N41.92	119W57.24	821	Waterville
WIW	46N25.76	119W17.26	128	Wooded Island
WRD	46N58.20	119W08.69	375	Warden
YA2	46N31.60	120W31.80	652	Yakima Two
YPT	46N02.93	118W57.73	325	Yellepit
(a) The first column is the alphanumeric seismic station designator. The latitude and longitude, elevation above sea level in meters, and the full station name follow this. The locations of the stations all are in Washington unless otherwise indicated; locations were determined from the Global Positioning System (GPS).				
(b) Three-component station.				

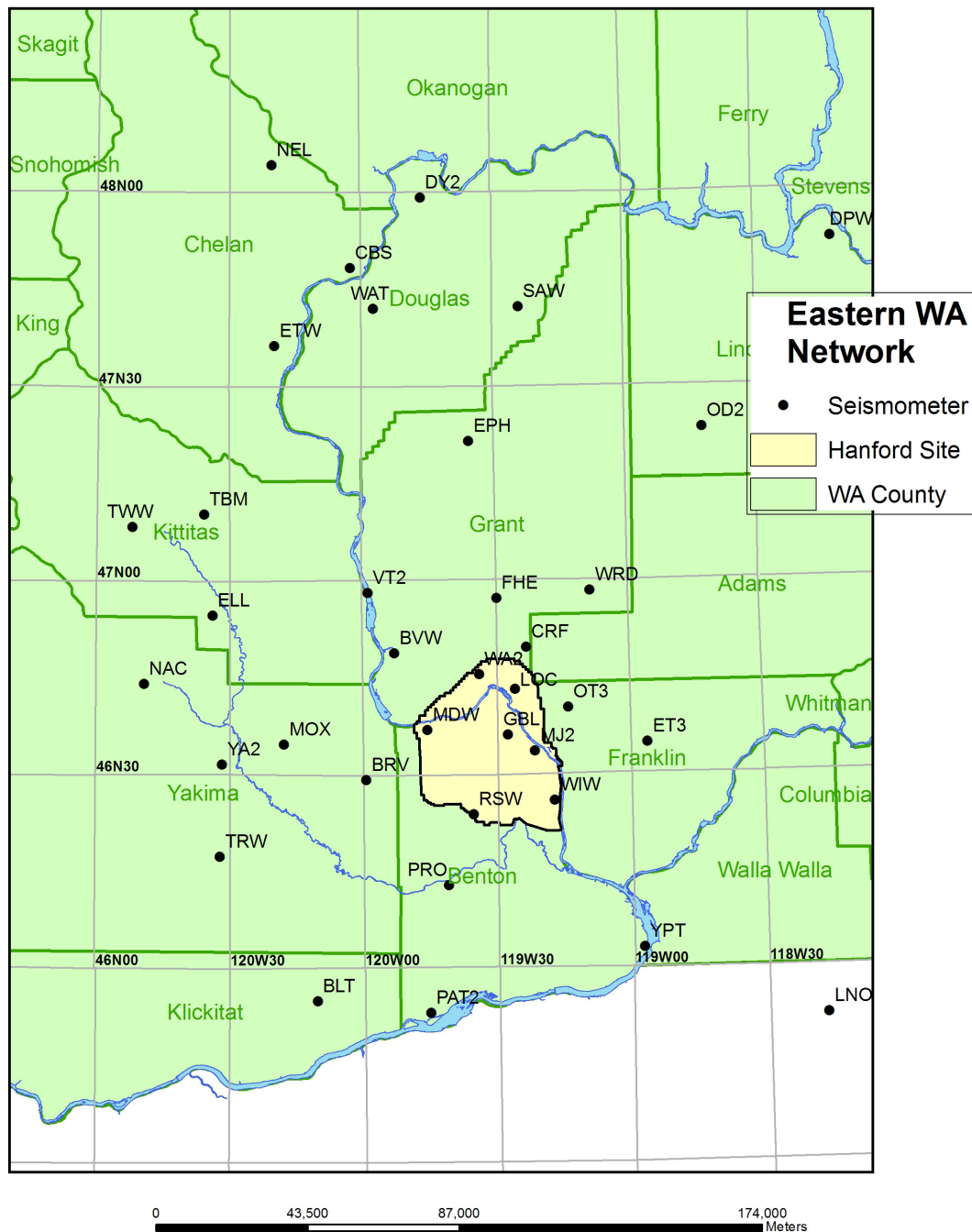


Figure 2.2. Seismometer Stations in the Eastern Washington Regional Network

The networks have 45 combined data channels because the Gable Butte and Frenchman Hills East stations are three-component sites, each consisting of vertical, north-south horizontal, and east-west horizontal components requiring 4 additional data channels. The other 41 stations are single vertical component seismometers. Fifteen radio telemetry relay sites are used by both networks to continuously transmit seismogram data to the Seismic Assessment Laboratory in the Sigma V building, Richland, Washington, for processing and archiving.

2.1.1 Station Maintenance

During the first quarter of FY 2008, a Teledyne Geotech Seismometer S-13 malfunctioned at the Red Mountain site (RED). This unusual occurrence prompted excavation and removal of the S-13 and replacement with a back up instrument until repairs can be made.

Due to the influence of an oceanic La Nina event, the Pacific Northwest is experiencing higher than normal moisture with increased snowfall for Eastern Washington. This increased cloud cover and fog have reduced the effectiveness of the solar panel power outputs at the remote seismic sites and prompted higher than normal visits to replace discharged batteries.



Figure 2.3. Battery Replacement at Ephrata Seismometer Station (EPH)

During FY 2007, the HSAP began upgrading the Hanford seismometer network with the ultimate goal of replacing analog radio telemetry with digital, Internet-based telemetry. The upgrade will help eliminate the reliance on aging radio receiving and multiplexing equipment currently located in the Seismic Assessment Laboratory in the Sigma V building. The first upgrade underway is the GBB station, to be equipped with triaxial broadband seismometers with built-in digitizing and telemetry equipment. A data recording unit and packet baler (Models Q330 and PB14F, Quanterra, Inc., Harvard, Massachusetts) and a solar controller (ProStar Model PS-15, Morningstar Corporation, Washington Crossing, Pennsylvania) were installed during the fourth quarter of FY 2007. Final connection to the Hanford network has been delayed due to communication problems encountered with the new Raven X

modem. The upgrade from the older Raven EDGE radio requires some specific settings for communication with the new data recording unit and packet baler. The GBB station upgrade is planned for completion in the second quarter FY 2008

A purchase requisition has been issued to acquire three broadband seismometer stations currently owned by the Incorporated Research Institutions for Seismology (IRIS) program. IRIS is a national geophysics research program operated by the National Science Foundation (NSF). These stations are located at Black Rock, Eltopia, and Paterson, Washington. As the IRIS research is completed in the western states, the NSF intends to transfer the stations to regional seismic monitoring programs such as HSAP. Acquisition costs for these stations are at large discount compared to standard equipment purchase and installation costs. These triaxial seismometer stations are equipped with digital recorders and telemetry gear and can detect a much broader range of seismic events than current HSN stations.

2.1.2 Data Acquisition

The signals from the seismometer stations are monitored for changes in signal amplitude that are expected from earthquakes. The seismic network is subdivided into spatial groupings of stations that are monitored for nearly simultaneous amplitude changes, resulting in triggering a permanent recording of the events. The groupings and associated weighting schemes are designed to allow very small seismic events to be recorded and to minimize false triggers. Events are classified as local (south-central Washington near the Hanford Site), regional (western United States and Canada), and teleseisms (from farther distances around the world). Local and regional events are usually earthquakes, but quarry and mining explosions also are recorded. Quarry and mining explosions usually can be identified from wave characteristics and the time of occurrence and may be confirmed with local government agencies and industries. Frequently, military exercises at the U.S. Army Yakima Training Center produce a series of acoustic shocks that trigger the recording system. Sonic booms and thunder also produce acoustic signals that may trigger the recording system.

The HSAP uses Earthworm, a PC-based system developed by the USGS and used by the Pacific Northwest Seismic Network at the UW, to record triggered events. One Earthworm system has been in continuous operation since January 6, 1999. A second system was installed in mid-March 1999. Both systems have been running in parallel since that time, with periodic hardware and software upgrades performed. Seismogram data from triggered events are collected on a SUN workstation (Sun Microsystems, Santa Clara, California) for assessment by HSAP staff. This information is evaluated to determine if the event is “false” (for example, due to a sonic boom) or is an earthquake or ground-surface or underground blast. Earthquake events are evaluated to determine epicenter locations, focal depths, and magnitudes (Section 3).

Although the two Earthworm systems are practically identical, slight differences in the trigger algorithms, combined with the granularity of the signal-measurement time windows, sometimes result in triggered events from one Earthworm system but not the other. These different or *exclusive* events are generally “false” triggers resulting from acoustical sources and not earthquakes or quarry blasts. Sometimes these exclusive events correspond to barely detectable, distant regional, or teleseismic earthquakes.

2.2 Strong Motion Accelerometer Stations

2.2.1 Location

The Hanford SMA network consists of five free-field SMA stations (see Figure 2.1; Table 2.3). SMAs are located in the 200 East and 200 West Areas, in the 100 K Area adjacent to the K Basins, in the 400 Area near the Fast Flux Test Facility, and at the south end of the 300 Area. With the termination of the Fast Flux Test Facility program, plans have been made to move the 400 Area station to a new location.

Table 2.3. Free-Field Strong Motion Accelerometer Sites

Site	Site ID	Location	Latitude Longitude Elevation
100 K Area	H1K	South of K Basins outside 100 Area fence lines	46° 38.51' 119° 35.53' 152 m
200 East Area	H2E	East of B Plant; northwest of Waste Treatment and Immobilization Plant; north of 7th Street and east of Baltimore Avenue	46° 33.58' 119° 32.00' 210 m
200 West Area	H2W	West of Plutonium Finishing Plant (PFP) and 200 West Area tree barrier	46° 33.11' 119° 38.64' 201 m
300 Area	H3A	South end of 300 Area inside fence lines (NE 1/4, SW 1/4, Sec. 11, T10N, R28E)	46° 21.83' 119° 16.55' 119 m
400 Area	H4A	500 ft from fence line on east side of facility and north of parking area)	46° 26.13' 119° 21.30' 171 m

The SMA stations were chosen based on two criteria (Moore and Reidel 1996): instruments should be located in areas 1) having the highest densities of workers and 2) containing hazardous facilities. Hanford workers are situated at the 200 East and 200 West Areas, 100 K Area, the Fast Flux Test Facility (400 Area), and the 300 Area. The 200 Areas are where high-level radioactive waste from past processing of fuel rods is stored in single-shell and double-shell tanks. In addition, the Canister Storage Facility that holds encapsulated spent fuel rods is in the 200 East Area, and the new Waste Treatment and Immobilization Plant is being constructed in the 200 East Area. The 100 K Area contains the K Basins, where spent fuel rods from the N Reactor are stored prior to encapsulation. The Cold Vacuum Drying Facility, located in the 100 K Area, is used to encapsulate spent fuel rods from the K Basins prior to shipment to the Canister Storage Building in the 200 East Area.

2.2.2 Station Design

All free-field SMA stations consist of a four-panel solar array and two 30-gal galvanized drums. Each panel has a maximum 42-W output. The two 30-gal drums are set in the ground such that the base of each drum is about 1 m below the ground surface. One drum houses only the SMA; the other drum, which is connected via a sealed conduit to the SMA drum, contains the batteries. Communication is through a General Packet Radio Service (GPRS) system, which provides a continuous radio data-link

with an Internet service provider. This GPRS system along with the solar power regulator is housed in a small enclosure mounted at the rear of the solar array. The enclosure serves as a junction box for all cabling between equipment inside and outside the drums through conduit. The antenna for the GPRS is mounted on top of the enclosure. The enclosure permits quick access to check battery conditions and a connection directly to the RS-232 port of the SMA without removing the drum lids.

The SMA instruments are three-component units consisting of one vertical, one north-south horizontal, and one east-west horizontal data channel. The instruments in use are the ETNA system (Kinemetrics, Inc., Pasadena, California). Instrument specifications are summarized in Table 2.4. Each ETNA unit contains a digital recorder, data storage unit, and Global Positioning System (GPS) receiver (Figure 2.4). These components are housed in a watertight box.

Table 2.4. Instrument Parameters for the Kinemetrics ETNA System in the Hanford SMA Network

Parameter	Value or Range
Sensor	
Type	Triaxial EpiSensor Accelerometer
Full-scale	$\pm 2 \text{ g}^{(a)}$
Frequency range	0–80 Hz
Damping	Approximately 70% critical ^(a)
Data Acquisition	
Number of channels	3
Sample rate	200 samples/sec
Resolution	18 bits
Digital output	Real-time, RS-232 output stream
Seismic Trigger	
Filter	0.1–12.5 Hz
Trigger level	0.02% $\text{g}^{(b)}$
Alarm (call-out) threshold	Not activated
Pre-event memory	10 s
Post-event time	40 s
(a) Setting is dependent on instrument calibration.	
(b) See Section 2.2.4 for discussion of trigger thresholds.	

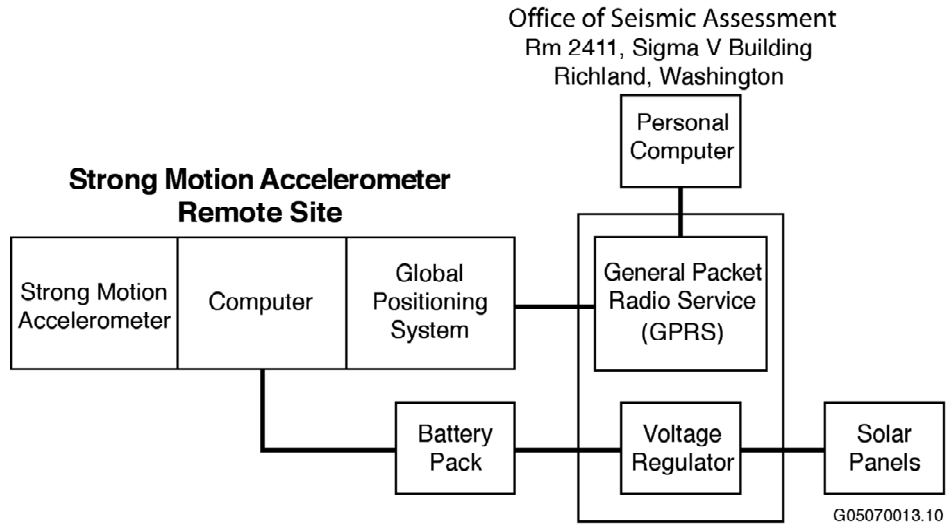


Figure 2.4. Schematic Diagram of a Strong Motion Accelerometer Installation

The GPRS system provides the Internet address connection to access the system. Stations can be monitored from any computer with appropriate access, and data can be downloaded to a dedicated computer in the Seismic Assessment Laboratory. The data also can be downloaded directly at each site via a built-in cable connection at the enclosure in case of communication failure.

The GPS receiver is used principally to access the National Bureau of Standards timing system.² The GPS receiver is activated internally approximately every 4 hr and checks the “location of the instrument” and the time. Any differences between the internal clock and the GPS time are recorded by the SMA. Any corrections to the internal timing are made automatically. Typically, the greatest correction recorded is approximately 4 milliseconds (ms).

2.2.3 Strong Motion Accelerometer Operations Center

The combined operations, data recording, data interpretation, and maintenance facility is located in the Sigma V Building and is operated by the HSAP.

2.2.4 Strong Motion Operational Characteristics

Signals from the three accelerometer channels use an 18-bit digitizer with data temporarily stored in a memory buffer. The digital sampling rate is 200 samples/s. The three channels are monitored for signals that exceed a programmable trigger threshold. When one accelerometer channel is triggered, the other channels automatically record. The nominal threshold used from 1998 to 2006 was 0.1% g (0.05% of the full-scale range of 2.0 g; g is the acceleration of gravity, 9.8 m/s² or 32 ft/s²). Threshold trigger levels are set to trigger infrequently on noise sources (e.g., vehicles, sonic booms) near each site. In 2006, larger data storage capacities were installed that allowed the trigger thresholds to be reduced to 0.02% g (see Section 6). This permits the recording of ground motion data for smaller, non-damaging earthquakes that can be useful in estimating impacts of larger earthquakes. It also helps confirm the correct operation of the instruments by analyzing the smaller-amplitude triggers.

² The GPS receiver antenna is mounted on the enclosure at the rear of the solar array.

When one of the accelerometer channels exceeds the trigger threshold, the recorders save information within the data buffers. Data recording begins 10 s before the actual trigger time, continues until the trigger threshold is no longer exceeded, and ends with an additional 40 s of data. The saved files created by a triggered event are stored on memory cards to be retrieved and examined by HSAP staff.

3.0 Geology and Tectonic Analysis

The Hanford Site lies within the Columbia Basin, an intermontane basin between the Cascade Range and the Rocky Mountains filled with Cenozoic volcanic rocks and sediments. This basin forms the northern part of the Columbia Plateau physiographic province (Fenneman 1931) and the Columbia River flood-basalt province (Reidel et al. 1989). In the central and western parts of the Columbia Basin, the Columbia River Basalt Group (CRBG) overlies Tertiary continental sedimentary rocks and is overlain by late Tertiary and Quaternary fluvial and glaciofluvial deposits (Campbell 1989; Reidel et al. 1989, 1994; DOE 1988). In the eastern part, a thin (<100-m) sedimentary unit separates the basalt and underling crystalline basement, and a thin (<10-m) veneer of eolian sediments overlies the basalt (Reidel et al. 1989, 1994).

The Columbia Basin has two structural subdivisions or subprovinces—the Yakima Fold Belt and the Palouse Slope. The Yakima Fold Belt includes the western and central parts of the Columbia Basin and is a series of anticlinal ridges and synclinal valleys with major thrust faults typically along the northern flanks (Figure 3.1) (Reidel and Fecht 1994a, 1994b). The Palouse Slope is the eastern part of the basin and is less deformed than the Yakima Fold Belt, with only a few faults and low-amplitude long-wave-length folds on an otherwise gently westward dipping paleoslope. Figure 3.2 shows north-south (B-B') and east-west (A-A') cross sections through the Columbia Basin based on surface mapping (Reidel and Fecht 1994a, 1994b), deep boreholes (Reidel et al. 1994), geophysical data (Rohay et al. 1985; DOE 1988), and magnetotelluric data obtained as part of BWIP (DOE 1988).

3.1 Earthquake Stratigraphy

Seismic studies at the Hanford Site have shown that the earthquake activity is related to crustal stratigraphy (large groupings of rock types) (Rohay et al. 1985; DOE 1988). The main geologic units important to earthquakes at the Hanford Site and the surrounding area are

- the Miocene CRBG
- pre-basalt sediments of Paleocene, Eocene, Oligocene, and Early Miocene age
- the crystalline basement composed of Precambrian and Paleozoic craton/continental margin
- Mesozoic accreted terranes.

3.2 Geologic Structure Beneath the Monitored Area

Between the late 1950s and the mid 1980s, deep boreholes were drilled for hydrocarbon exploration in the Columbia Basin. These boreholes provided accurate measurements of the physical properties of the CRBG and the pre-basalt sediments (Reidel et al. 1989, 1994), but the thickness of the pre-basalt sediments and nature of the crystalline basement are still poorly understood. Table 3.1, derived from Reidel et al. (1994), was developed for the geologic interpretation in this report. The thicknesses of these units are variable across the monitored area. Table 3.1 summarizes the approximate thickness at the borders of the monitored area.

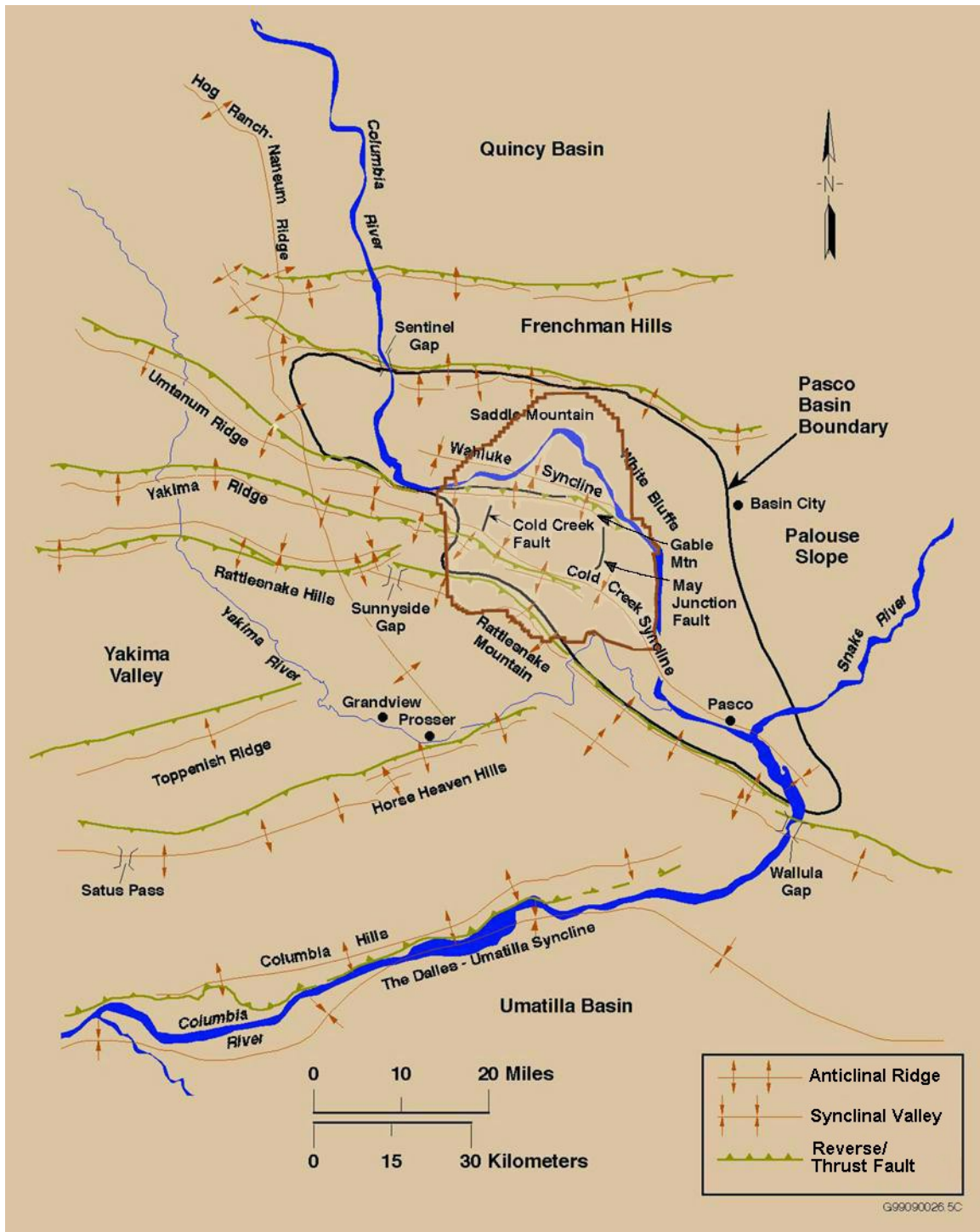
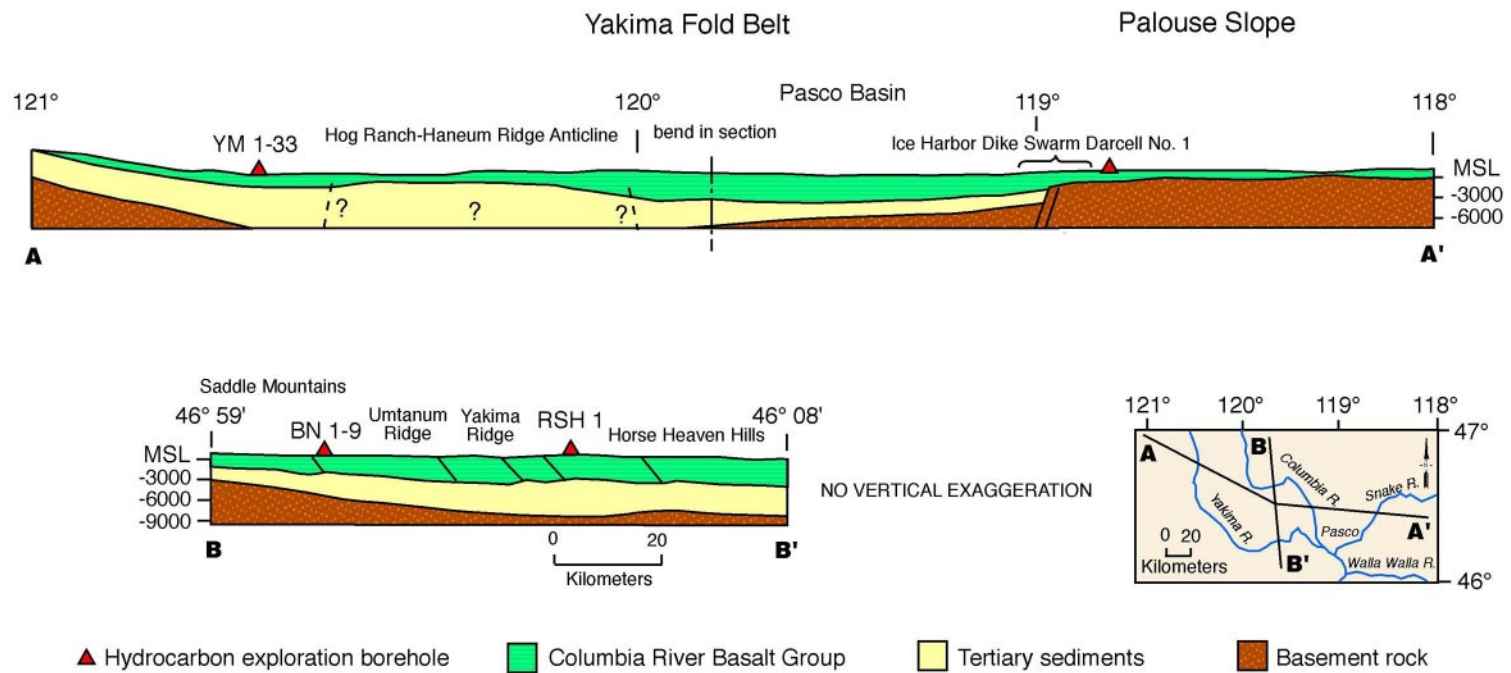


Figure 3.1. Physical and Structural Geology of the Hanford Site, Washington



G01010082.2

Figure 3.2. Geologic Cross Sections through the Columbia Basin (Reidel et al. 1994)

Table 3.1. Thicknesses of Stratigraphic Units in the Monitoring Area (from Reidel et al. 1994)

Stratigraphy	North	South	East	West
Columbia River Basalt Group (includes suprabasalt sediments)	3.0 km	4.5 km	2.2 km	4.2 km
Pre-basalt sediments	3.0 km	>4.5 km	0	>6.0 km

The thickness of the basalt and the pre-basalt sediments varies as a result of different tectonic environments. The western edge of the North American craton (late Precambrian/Paleozoic continental margin and Precambrian craton) is located in the eastern portion of the monitored area (Reidel et al. 1994). The stratigraphy on the craton consists of CRBG overlying crystalline basement; the crystalline basement is continental crustal rock that underlies much of the western North America. The stratigraphy west of the craton consists of 4 to 5 km of CRBG overlying up to 6 km of pre-basalt sediments. This in turn overlies accreted terranes of Mesozoic age. The area west of the craton was subsiding during the Eocene and Oligocene, accumulating great thickness of pre-CRBG sediments. Continued subsidence in this area during the Miocene resulted in thicker CRBG compared to that on the craton. Subsidence continues today but at a greatly reduced rate (Reidel et al. 1994).

3.3 Tectonic Pattern

Studies have concluded that earthquakes can occur in the following six different tectonic environments (earthquake sources) at the Hanford Site (Geomatrix 1996):

- **Major Geologic Structures.** Reverse/thrust faults in the CRBG associated with major anticlinal ridges such as Rattlesnake Mountain, Yakima Ridge, and Umtanum Ridge could produce some of the largest earthquakes.
- **Secondary Faults.** These faults are typically smaller (1 to 20 km) than the main reverse/thrust faults that occur along the major anticlinal ridges (up to 100 km). Secondary faults can be segment boundaries (tear faults) and small faults of any orientation that formed along with the main structure.
- **Swarm Areas.** Small geographic areas not known to contain any geologic structures produce clusters of events (swarms), usually located in synclinal valleys. These clusters consist of a series of small shocks with no outstanding principal event. Swarms occur over a period of days or months, and the events may number into the hundreds and then quit, only to start again at a later date. This differs from the sequence of foreshocks, mainshock, and trailing-off aftershocks that have the same epicenter or are associated with the same fault system. In the past, swarms were thought to occur only in the CRBG. Most swarm areas are in the basalt, but swarm events also appear to occur in all geologic layers. However, typically a swarm event at a specific time is usually restricted to one layer. Seven earthquake swarm areas are recognized in the Hanford Seismic Network area, but this list will be updated as new swarm areas develop. The Saddle Mountains, Wooded Island, Wahluke, Coyote Rapids, and Horse Heaven Hills swarm areas are typically active at one time or another during the year (Figure 5.1). The other earthquake swarm areas are active less frequently.
- **Entire Columbia Basin.** The entire basin, including the Hanford Site, could produce a “floating” earthquake. A floating earthquake is one that, for seismic design purposes, can happen anywhere in a tectonic province and is not associated with any known geologic structure. Seismic interpretation classifies it as a random event for purposes of seismic design and vibratory ground motion studies.

- **Basement Source Structures.** Studies (Geomatrix 1996) suggest that major earthquakes can originate in tectonic structures in the crystalline basement. Because little is known about geologic structures in the crystalline basement beneath the Hanford Site, earthquakes cannot be directly tied to a mapped fault. Earthquakes occurring in the crystalline basement without known sources are treated as random events.
- **Cascadia Subduction Zone.** This source has been postulated to be capable of producing a magnitude 9 earthquake. Because this source is along the western boundary of Washington State and outside the HSN, the Cascadia subduction zone is not an earthquake source that is monitored at the Hanford Site, so subduction zone earthquakes are not reported here. Because any earthquake along the Cascadia subduction zone can have a significant impact on the Hanford Site or can be felt like the February 2001 Nisqually earthquake, UW monitors and reports on this earthquake source for the DOE. Ground motion from any moderate or larger Cascadia subduction zone earthquake is detected by Hanford SMAs and reported (see Section 5).

4.0 Earthquake Catalog Description

An interactive program called XPED, developed at the University of Washington, is used to determine earthquake locations and magnitudes. This program reads seismogram data recorded by the Earthworm system and lets the user measure arrival times and durations from earthquakes. Arrival and duration times are used as input to the hypocenter routine within XPED to estimate locations and magnitudes of the seismic events. XPED results for local earthquakes (46°-47°N latitude, 119°-120°W longitude) are reported in Table 4.1. Other seismic events located in southeastern Washington, the Pacific Northwest, or outside the region also are evaluated, with results stored on the computer system; these results are not reported in this document. These other results sometimes are used as a check to confirm that the HSN is functioning properly (e.g., quality checks on data recording).

4.1 Coda-Length Magnitude

Coda-length magnitude (M_c), an estimate of local magnitude (M_L) (Richter 1958), is calculated using a relationship developed for Washington State by Crosson (1972):

$$M_c = 2.82 \log (D) - 2.46$$

where D is the duration of the observed event. Many of the earthquakes have magnitude determinations that are very small ($M_c < 0$) and highly uncertain. In Section 4 we define earthquakes as “minor” with magnitudes (M_c) smaller than 1.0. Coda-length magnitudes for events classified as explosions are not reported because they are biased by a prominent surface wave that extends the apparent duration in a way inconsistent with coda-length measurement.

4.2 Velocity Model

XPED uses the crustal velocity model for eastern Washington given in Table 4.2. The model does not include a surficial layer for the Hanford or Ringold formations because most seismometer stations are sited on basalt. The crustal velocity model extends 38 km deep (to the mantle) and consists of six layers, each with uniform seismic velocity. The crustal velocity model was developed using available geologic information and calibrated from seismic data recorded from accurately located earthquake and blast events in eastern Washington. Time corrections (delays) are incorporated into the velocity model to account for significant deviations in station elevations or stations situated on sedimentary layers. Station delays also are determined empirically from accurately located earthquakes and blast events in the region.

Table 4.1. Local Seismic Data, October 1 - December 31, 2007

Event ID	Type	Date	Time	Latitude	Longitude	Depth	Mag	NS/NP	Gap	Dmin	RMS	Q	Location
07100311561		07/10/03	11:56:36.38	46N18.41	119W32.94	7.31	1.4	26/34	77	9	0.15	AB	20.0 km W of Richland
07100311573		07/10/03	11:57:59.95	46N18.44	119W32.77	7.20	0.3	11/18	169	9	0.05	AC	19.8 km W of Richland
07101900462		07/10/19	00:46:45.49	46N51.32	119W37.16	16.46	0.5	21/26	88	11	0.11	AA	23.8 km N of 100-K Area
07102313040		07/10/23	13:04:27.13	46N43.37	119W28.81	4.36	-0.1	6/08	161	3	0.09	AC	12.7 km NE of 100-K Area
07102620501		07/10/26	20:50:34.15	46N43.38	119W29.81	2.44	-0.7	5/10	153	5	0.10	AD	11.8 km NE of 100-K Area
07110915255		07/11/09	15:26:18.62	46N38.81	119W28.04	16.41	0.5	21/26	47	5	0.12	AA	9.9 km E of 100-K Area
07111014464		07/11/10	14:47:11.31	46N28.40	119W15.46	0.43	-0.4	4/04	244	5	0.02	AD	8.8 km ENE of 400 Area
07111812431		07/11/18	12:43:31.85	46N20.24	119W40.52	7.89	0.1	7/10	167	9	0.04	AC	16.2 km NNE of Prosser
07111813064		07/11/18	13:07:08.23	46N20.28	119W40.79	6.13	0.5	9/12	166	9	0.07	AC	16.1 km NNE of Prosser
07111813072		07/11/18	13:07:37.64	46N20.24	119W40.47	7.43	-0.2	3/06	303	9	0.03	AD	16.2 km NNE of Prosser
07111813135		07/11/18	13:14:15.15	46N20.23	119W40.72	5.49	0.1	8/11	169	9	0.04	AC	16.0 km NNE of Prosser
07111900542		07/11/19	00:54:48.71	46N20.27	119W40.81	4.56	1.2	16/19	122	9	0.08	AB	16.1 km NNE of Prosser
07111909522		07/11/19	09:52:53.38	46N20.31	119W40.73	5.75	0.9	17/20	122	9	0.11	AB	16.2 km NNE of Prosser
07111910122		07/11/19	10:12:43.79	46N20.30	119W40.67	6.13	0.3	7/10	169	9	0.04	AC	16.2 km NNE of Prosser
07111919565		07/11/19	19:57:16.99	46N20.29	119W40.81	5.62	0.5	8/11	170	9	0.06	AC	16.1 km NNE of Prosser
07112111375		07/11/21	11:38:15.28	46N20.22	119W40.29	6.58	0.3	10/14	162	8	0.07	AC	16.3 km NNE of Prosser
07112112022		07/11/21	12:02:49.56	46N20.34	119W40.66	5.45	0.1	9/12	165	9	0.06	AC	16.3 km NNE of Prosser
07112112260		07/11/21	12:26:22.87	46N20.90	119W39.24	7.64	-0.3	3/06	295	7	0.02	AD	18.0 km NNE of Prosser
07112117554		07/11/21	17:56:10.16	46N20.25	119W40.67	4.75	0.6	13/16	165	9	0.06	AC	16.1 km NNE of Prosser
07112402092		07/11/24	02:09:51.48	46N20.25	119W40.46	5.92	0.4	10/14	164	8	0.05	AC	16.2 km NNE of Prosser
07112406452		07/11/24	06:45:47.19	46N13.74	119W33.92	8.18	0.2	8/09	206	9	0.06	AD	15.8 km E of Prosser
07112407361		07/11/24	07:36:39.69	46N20.20	119W40.03	6.46	0.3	11/14	117	8	0.14	AB	16.4 km NNE of Prosser
07112408452		07/11/24	08:45:45.96	46N20.26	119W40.74	5.32	0.2	9/12	166	9	0.07	AC	16.1 km NNE of Prosser
07112409163		07/11/24	09:16:59.48	46N20.35	119W40.58	5.88	0.4	10/13	165	8	0.05	AC	16.3 km NNE of Prosser
07112409190		07/11/24	09:19:00.34	46N20.29	119W40.63	6.43	0.2	6/09	182	9	0.07	AD	16.2 km NNE of Prosser
07112506091		07/11/25	06:09:35.85	46N20.18	119W40.49	4.97	0.3	7/10	164	9	0.07	AC	16.1 km NNE of Prosser
07112511584		07/11/25	11:59:11.97	46N20.40	119W40.81	4.33	1.5	17/20	122	9	0.08	AB	16.3 km NNE of Prosser
07112617244		07/11/26	17:25:06.24	46N19.69	119W41.72	3.45	0.6	7/11	255	10	0.08	BD	14.6 km NNE of Prosser
07112801200		07/11/28	01:20:30.32	46N20.23	119W40.61	5.50	0.7	11/15	165	9	0.07	AC	16.1 km NNE of Prosser
07112810484		07/11/28	10:49:03.63	46N20.24	119W40.50	6.10	0.4	7/11	164	9	0.05	AC	16.2 km NNE of Prosser
07112810492		07/11/28	10:49:29.04	46N20.32	119W40.79	6.35	0.5	6/09	166	9	0.05	AC	16.1 km NNE of Prosser

Table 4.1. (contd)

Event ID	Type	Date	Time	Latitude	Longitude	Depth	Mag	NS/NP	Gap	Dmin	RMS	Q	Location
07112819432		07/11/28	19:43:50.98	46N20.28	119W40.53	5.47	1.0	14/17	120	9	0.07	AB	16.2 km NNE of Prosser
07112822041		07/11/28	22:04:34.42	46N20.44	119W40.19	7.74	0.4	4/07	258	8	0.02	AD	16.7 km NNE of Prosser
07112905245		07/11/29	05:25:18.60	46N20.30	119W40.25	6.29	0.5	11/15	162	8	0.05	AC	16.4 km NNE of Prosser
07112905260		07/11/29	05:24:35.88	46N20.26	119W40.17	5.35	0.6	9/13	161	8	0.06	AC	16.4 km NNE of Prosser
07112913350		07/11/29	13:35:25.76	46N20.44	119W40.97	6.14	0.4	7/10	167	9	0.05	AC	16.3 km NNE of Prosser
07112918015		07/11/29	18:02:12.06	46N20.22	119W40.95	6.05	0.1	6/08	167	9	0.05	AC	15.9 km NNE of Prosser
07113009394		07/11/30	09:40:04.55	46N20.33	119W40.93	6.35	0.4	10/13	167	9	0.06	AC	16.1 km NNE of Prosser
07120619443	X	07/12/06	19:44:55.85	46N07.64	119W01.05	0.03		15/15	122	9	0.12	AB	11.8 km SE of Kennewick
07120806063		07/12/08	06:07:02.13	46N20.20	119W40.27	6.20	0.4	10/13	162	8	0.04	AC	16.2 km NNE of Prosser
07121114304		07/12/11	14:31:08.71	46N40.40	119W29.43	17.96	0.6	17/21	98	6	0.08	AB	8.9 km ENE of 100-K Area
07121301044		07/12/13	01:05:07.39	46N42.08	119W30.52	4.94	-0.8	4/05	109	6	0.06	AD	9.5 km NE of 100-K Area
07121818025		07/12/18	18:03:14.25	46N43.05	119W29.66	0.02	0.0	7/08	86	4	0.09	AB	11.5 km NE of 100-K Area
07122011101		07/12/20	11:10:36.06	46N32.42	119W37.12	24.02	1.1	20/20	54	7	0.09	AA	2.5 km SE of 200 West
07122522022		07/12/25	22:02:50.48	46N23.24	119W33.61	16.26	0.0	12/12	81	2	0.08	AA	16.4 km WSW of 400 Area

Explanation of Table 4.1

Event ID:	The Earthworm recording system creates the identification number. XPED uses the year, month, day, and time to create a unique number for each event.
Type:	P is Probable Blast; X is Confirmed Blast; F is Felt Earthquake; blank is local earthquake.
Date:	The year and date in Universal Time Coordinated (UTC). UTC is used throughout this report unless otherwise indicated.
Time:	The origin time of the earthquake given in Coordinated Universal Time (UTC). To covert UTC to Pacific Standard Time, subtract eight hours; to Pacific Daylight Time, subtract seven hours.
Latitude:	North latitude, in degrees and minutes, of the earthquake epicenter.
Longitude:	West longitude, in degrees and minutes, of the earthquake epicenter.
Depth:	The depth of the earthquake in kilometers (km).
Mag:	The magnitude is expressed as coda-length magnitude M_c , an estimate of local magnitude M_L (Richter 1958). If magnitude is blank, a determination was not made.
NS/NP:	Number of stations/number of phases used in the solutions.
Gap:	Azimuthal gap; the largest angle (relative to the epicenter) containing no stations.
DMIN:	The distance from the earthquake epicenter to the closest station.
RMS:	The root-mean-square residual (observed arrival times minus the predicted arrival times) at all stations used to locate the earthquake. It is useful as a measure of quality of the solution only when five or more well-distributed stations are used in the solution. Good solutions are normally characterized by RMS values of less than about 0.3 s.
Q:	Quality factors; indicate the general reliability of the solution/location (A is best quality, D is worst). See Section 3.3 of this report, "Quality Factors."

4.3 Quality Factors (Q)

XPED assigns a two-letter **Quality factor** (Table 4.1) that indicates the general reliability of the solution (**A** is best quality, **D** is worst). Similar quality factors are used by the USGS for events located with the computer program HYPO71. The first letter of the quality code is a measure of the hypocenter quality based primarily on arrival time residuals. For example: Quality **A** requires a root-mean-square residual (**RMS**) less than 0.15 s, while a **RMS** of 0.5 s or more is **D** quality (other estimates of the location uncertainty also affect this quality parameter). The second letter of the quality code is related to the spatial distribution of stations that contribute to the event location, including the number of stations (**NS**), the number of p-wave and s-wave phases (**NP**), the largest gap in event-station azimuth distribution (**GAP**), and the closest distance from the epicenter to a station (**DMIN**). Quality **A** requires a solution with **NP** > 8, **GAP** < 90°, and **DMIN** < 5 km (or the hypocenter depth if it is greater than 5 km). If **NP** ≤ 5, **GAP** > 180°, or **DMIN** > 50 km, the solution is assigned Quality **D**.

Uncertainties associated with estimated depths depend upon the number of stations and number of phase measurements (**NS/NP**) utilized in the XPED calculation. Generally speaking, if the number of phases exceeds 10 measurements, the depth estimate is considered to be reliable. In this case the second

letter in the quality evaluation is either “A” or “B” (cf. Table 4.1). For example, the number of phase measurements from earthquakes ultimately classified as “deep” events typically falls within the 10-20 measurement range; these depth estimates are considered reliable. However, the number of phase measurements from earthquakes classified as “shallow” or “intermediate” may be less than 10 readings; in this case the depth estimate is less certain and the event could be classified as occurring in the CRBG or pre-basalt layers.

Table 4.2. Crustal Velocity Model for Eastern Washington (from Rohay et al. 1985)

Depth to Top of Velocity Layer (km)	Layer	Velocity (km/s)
0.0	Saddle Mountains and Wanapum Basalts and intercalated Ellensburg Formation	3.7
0.4	Grande Ronde Basalt and pre-basalt sediments	5.2
8.5	Crystalline basement, Layer 1	6.1
13.0	Crystalline basement, Layer 2	6.4
23.0	Sub-basement	7.1
38.0	Mantle	7.9

5.0 Seismic Activity – First Quarter FY 2008

5.1 Summary

For the Hanford Seismic Network, 44 local earthquakes were recorded during the first quarter of fiscal year 2008. A total of 31 micro earthquakes were recorded within the Rattlesnake Mountain swarm area at depths in the 4-8 km range, most likely within the pre-basalt sediments. The largest event recorded by the network during the first quarter (November 25, 2007 - magnitude 1.5 M_c) was located within this swarm area at a depth of 4.3 km. With regard to the depth distribution, 4 earthquakes occurred at shallow depths (less than 4 km, most likely in the Columbia River Basalt Group -CRBG), 35 earthquakes at intermediate depths (between 4 and 9 km, most likely in the pre-basalt sediments), and 5 earthquakes were located at depths greater than 9 km, within the crystalline basement. Geographically, 38 earthquakes occurred in swarm areas and 6 earthquakes were classified as random events.

Most of the earthquakes at the Hanford Site have been located at shallow depths with deep events the next greatest number of earthquakes. Intermediate depth events have historically shown the fewest number of earthquakes. During the first quarter FY 2008 the largest number of events were located at intermediate depths within the Rattlesnake Mountain swarm area. This and previous deep swarms located southwest of Rattlesnake Mountain may suggest that the depth distribution of events is different there compared to the shallow swarms located to the northeast near the Saddle Mountains.

5.2 First Quarter FY08 Earthquakes

During the first quarter of fiscal year 2008, the Hanford Seismic Network recorded 225 triggers which included 51 events located in the southeast Washington area and an additional 99 regional and teleseismic events. Forty-five events were located in the Hanford vicinity for this report and included one blast event.

The 44 earthquakes that occurred in the Hanford area are listed in Table 5.1 and Table 5.2. Epicenters of these events are shown in Figure 5.1; the depth distribution of these events are shown in Figure 5.2. In the following discussion, *minor earthquakes* refer to seismic events for which the magnitude is less than 1.0 M_c .

The depth distribution of local earthquakes recorded during FY 2008 is shown in Table 5.1.

Table 5.1. Depth Distribution of Local Earthquakes

Category	First Quarter	Second Quarter	Third Quarter	Fourth Quarter	FY 2008
Shallow (0-4 km deep)	4				4 (9%)
Intermediate (4-9 km deep)	35				35 (80%)
Deep (greater than 9 km deep)	5				5 (11%)
Total	44				44 (100%)

Table 5.2. Earthquake Locations for FY 2008

Seismic Sources		First Quarter 10/01–12/31	Second Quarter 1/01–3/31	Third Quarter 4/01–6/30	Fourth Quarter 7/01–9/30	FY 2008
Geologic Structure			-	-	-	
Swarm Areas	Frenchman Hills					
	Saddle Mountains/ Royal Slope	1				1
	Wahluke Slope					
	Coyote Rapids	5				5
	Wye	1				1
	Cold Creek					
	Rattlesnake Mountain.	31				31
	Horse Heaven Hills					
	Total for swarm areas	38				38 (86%)
Random Events		6				6 (14%)
Total for all earthquakes		44				44

5.2.1 Location and Depth of Earthquakes

During the first quarter of FY 2008, 38 events occurred in swarm areas and 6 events were classified as random. As previously discussed, small geographic areas not known to contain any geologic structures produce clusters of events (swarms) usually in basalt synclinal valleys. In the past, swarms were thought to occur only at relatively shallow depths within the CRBG. During the last several years deeper based swarm events have been recorded, for example, the 31 micro earthquakes within the Rattlesnake Mountain swarm area during this quarter.

5.2.2 Major Anticlinal Ridges

No earthquakes were associated with the major geologic structures in the area surrounding the Hanford Site for the first quarter of FY 2008.

5.2.3 Earthquake Swarm Areas

Thirty-eight earthquakes were characterized as swarm events in the first quarter of FY 2008.

Saddle Mountains Swarm Area

On October 19 a minor earthquake was recorded at depth approximately 16.5 km and considered to be within the crystalline basement.

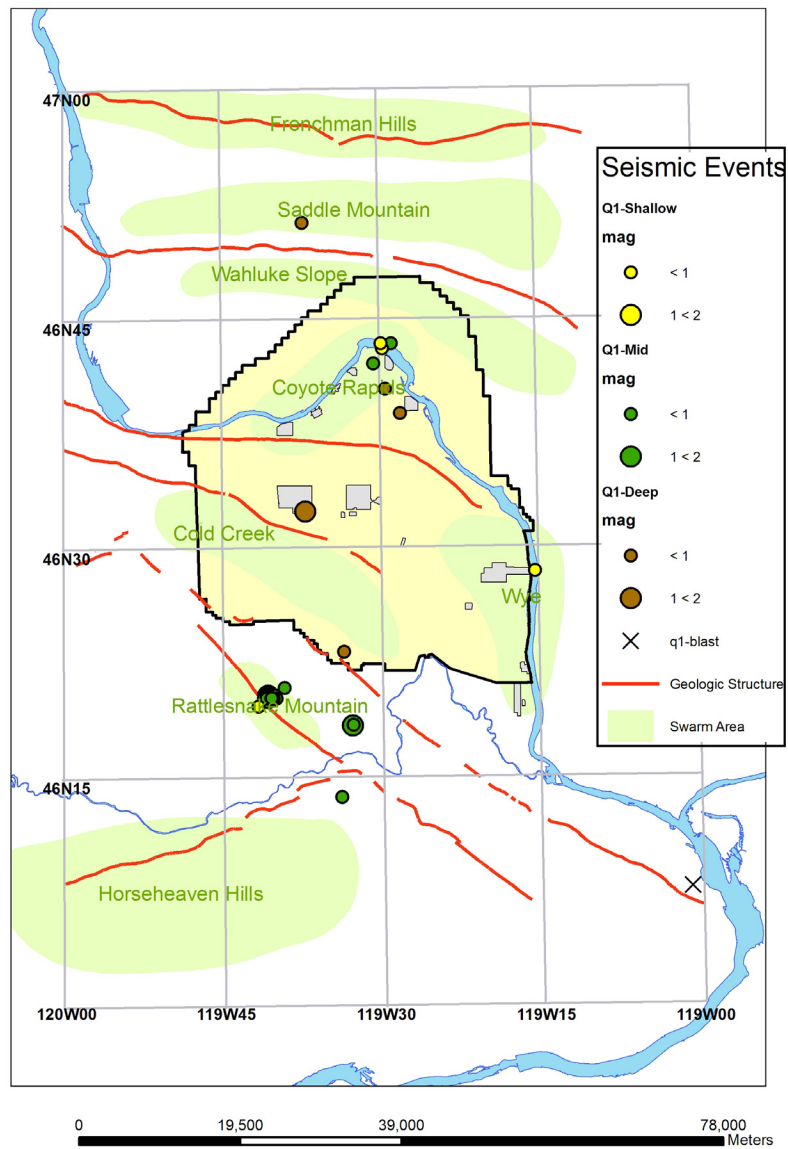


Figure 5.1. Earthquakes Occurring in the Hanford Monitoring Area between October 1, 2007 and December, 2007 (First Quarter)

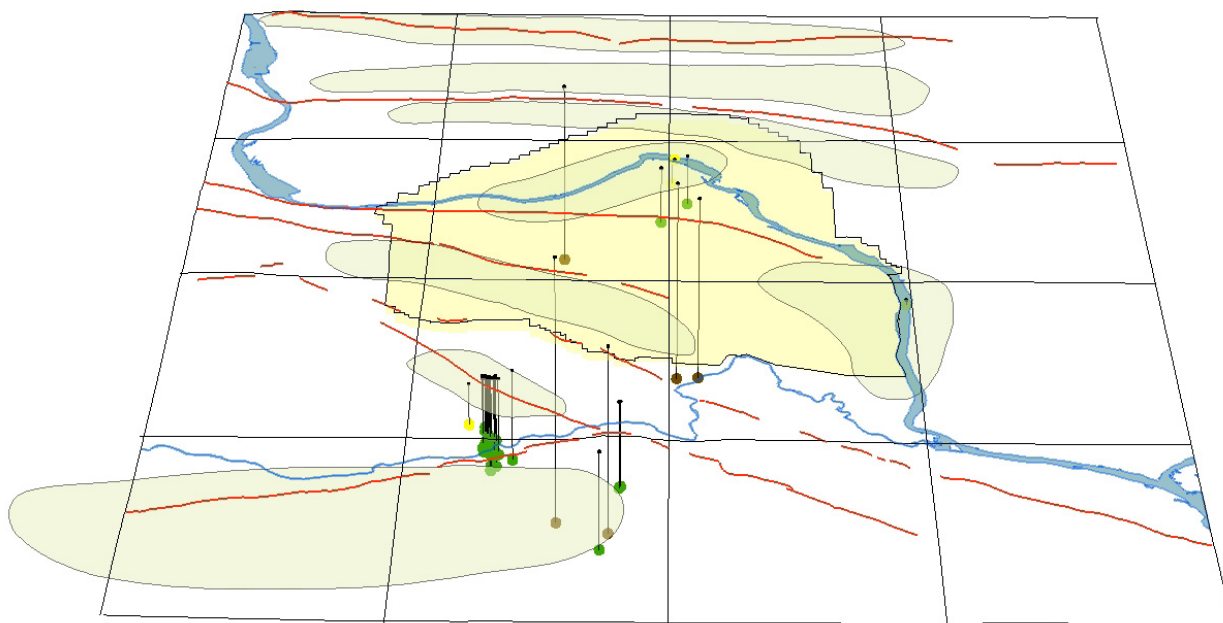


Figure 5.2. Three-Dimensional Depiction of Earthquakes Occurring in the Hanford Monitoring Area between October 1, 2007 and December, 2007 (First Quarter)

Coyote Rapids Swarm Area

Four minor events were recorded during the first quarter FY 2008 (October 23, October 26, December 13, and December 18) at depths in the 0–5 km range. The shallower October 26 and December 18 events most likely were located within the CRBG. The depth estimates on the October 23 and December 13 events are more uncertain and the events could have occurred near the boundary between the CRBG and pre-basalt sediments. Another event was recorded at depth 18.0 km on December 11 and located within the crystalline basement.

Wye Swarm Area

A minor event was recorded on November 10 with estimated depth 0.4 km and most likely located in the CRBG.

Rattlesnake Mountain Swarm Area

During the quarter, 31 micro earthquakes were recorded in the Rattlesnake Mountain swarm area at a range of depths 3.5 – 8.2 km. Within one hour four minor events were recorded on November 18. On the following day (November 19) three additional minor events and one event measuring 1.2 M_c were recorded. Four additional minor events were recorded on November 21, five minor events on November 24, and one minor event and one event measuring 1.5 M_c were recorded on November 25. The 1.5 M_c earthquake was the largest magnitude event recorded during the quarter. One minor event was recorded on November 26, four minor events and one event measuring 1.0 on November 28, four minor events on November 29, and one minor event on November 30. An additional minor event was recorded on December 8.

The proximity of epicenters (cf. Figure 5.1) suggests that these earthquakes have a common source. The most reliable depth estimates are associated with the November 19, November 25, and November 28 events showing depths between 4.3 and 5.5 km. For this reason the swarm events are considered to have occurred within the pre-basalt sediments, deeper than the known geologic structure expressed at the surface.

5.2.4 Random or Floating Events

During the first quarter of FY 2008, four minor seismic events and two events measuring 1.1 and 1.4 M_c were recorded and classified as random events. On October 3, two events were recorded nearly simultaneously with magnitudes 0.0 and 1.4 M_c ; epicenters were located east of Rattlesnake Mountain at the 7.2 – 7.3 km depth range, most likely within the pre-basalt sediments. A minor event (November 9) was located within the crystalline basement at depth 16.4 km with epicenter near the southwest boundary of 100-F Area. Another minor event (November 24) was located at depth 8.2 km (most likely, pre-basalt sediments) with epicenter south of the Yakima River. An event of magnitude 1.1 M_c was recorded on December 20 and located within the crystalline basement at depth 24.0 km beneath the 200 West Area. The third minor event (December 25) was located within the crystalline basement at depth 16.3 km near the southern boundary of the Hanford site.

6.0 Strong Motion Accelerometer Operations

The Hanford SMA network has been in continuous operation since November 20, 1998. Initially, the threshold used in the SMA network was 0.1% g. In 2006, the trigger threshold was reduced to 0.02% g when new instruments with greater storage capacity were installed, allowing more noise triggers to be saved without exceeding disk capacity.

The Hanford SMA network did not trigger from a seismic event during the first quarter of FY 2008.

7.0 Capabilities in the Event of a Significant Earthquake

The SMA network was designed to provide ground motion data in areas at the Hanford Site that have high densities of people and/or facilities containing hazardous materials, to ensure that the Hanford Site is in compliance with DOE Order 420.1A, "Facility Safety." The network also allows the HSAP to support Hanford Site emergency services organizations in complying with DOE Order G 420.1-1, Section 4.7, "Emergency Preparedness and Emergency Communications," by providing area ground motion data in the event of an earthquake on the Hanford Site. This section summarizes the capabilities of the HSAP in the event of an earthquake at Hanford.

Historically, only a few facilities at the Hanford Site had instruments to provide data on peak ground accelerations or any type of ground motion. The current SMA instruments were located so that if an earthquake occurred, ground motion data would be readily available to assess the damage at the 100-K Area, the 200 East and West Areas, and the 300 and 400 Area facilities, which have the greatest concentration of people and also contain hazardous materials (Moore and Reidel 1996).

Many facilities at the Hanford Site have undergone various degrees of seismic analysis, either during design or during requalification. Although the seismic design of a building may be known, when an earthquake is "felt" in a facility on the Hanford Site, a determination must be made as to the extent of damage before it can be reoccupied and the systems restarted. A "felt" earthquake may not cause any significant damage to a building but, without adequate characterization of the ground motion, initial determination of the building's possibility of having damage may be impossible.

In the event of a major regional earthquake such as the 2001 Nisqually event, building managers, emergency directors, and engineers can obtain ground motion data recorded by the SMA network from the HSAP in the Sigma V Building. This is done through the Hanford Site Emergency Services organization. Normal hours of operation for the HSAP are between 6 a.m. and 4:30 p.m., Monday through Friday. If a SMA is triggered, the HSAP will download events that were recorded and determine the peak ground accelerations. This information is then passed on to Hanford Site Emergency Services personnel where the facility engineers can use the data to determine if the ground motion exceeded, is equal to, or is less than the building design. This, along with assessments from trained engineers, allows the facility manager to make a rapid and cost-effective determination on whether a building is safe to re-occupy or should not be used until it has been inspected in more detail. Buildings that have designs exceeding the recorded ground motion could be put back into service very quickly; buildings with designs that are very close to or less than measured ground motion could be given priority for onsite damage inspections.

8.0 References

- Campbell NP. 1989. "Structural and Stratigraphic Interpretation of Rocks under the Yakima Fold Belt, Columbia Basin, Based on Recent Surface Mapping and Well Data." In *Volcanism and Tectonism in the Columbia River Flood-Basalt Province*, SP Reidel and PR Hooper (eds), Special Paper 239, pp. 209–222. Geological Society of America, Boulder, Colorado.
- Crosson RS. 1972. "Small Earthquakes, Structure and Tectonics of the Puget Sound Region." *Bulletin of the Seismological Society of America* 62(5):1133–1171.
- DOE. 1988. *Site Characterization Plan for the Reference Location, Hanford, Washington – Consultation Draft*. DOE/RW-0164, Vol. 1, U.S. Department of Energy, Washington, D.C.
- DOE Order 420.1B, Chapter IV, Section 3.d. "Seismic Detection." U.S. Department of Energy, Washington, D.C.
- DOE Order G 420.1-1, Section 4.7. "Emergency Preparedness and Emergency Communications." U.S. Department of Energy, Washington, D.C.
- Fenneman NM. 1931. *Physiography of Western United States*. McGraw-Hill Book Company, Inc., New York.
- Geomatrix. 1996. *Probabilistic Seismic Hazard Analysis, DOE Hanford Site, Washington*. WHC-SD-W236A-TI-002, Rev. 1, Westinghouse Hanford Company, Richland, Washington.
- Moore C and SP Reidel. 1996. *Hanford Site Seismic Monitoring Instrumentation Plan*. WHC-SD-GN-ER-30036, Westinghouse Hanford Company, Richland, Washington.
- Reidel SP and KR Fecht. 1994a. *Geologic Map of the Richland 1:100,000 Quadrangle, Washington*. Open File Report 94-8, Division of Geology and Earth Resources, Washington State Department of Natural Resources, Olympia.
- Reidel SP and KR Fecht. 1994b. *Geologic Map of the Priest Rapids 1:100,000 Quadrangle, Washington*. Open File Report 94-13, Division of Geology and Earth Resources, Washington State Department of Natural Resources, Olympia.
- Reidel SP, NP Campbell, KR Fecht, and KA Lindsey. 1994. "Late Cenozoic Structure and Stratigraphy of South-Central Washington." In *Regional Geology of Washington State*, E Cheney and R Lasmanis (eds), Bulletin 80, pp. 159-180. Division of Geology and Earth Resources, Washington State Department of Natural Resources, Olympia.
- Reidel SP, KR Fecht, MC Hagood, and TL Tolan. 1989. "Geologic Development of the Central Columbia Plateau." In *Volcanism and Tectonism in the Columbia River Flood-Basalt Province*, SP Reidel and PR Hooper (eds), Special Paper 239, pp. 247-264. Geological Society of America, Boulder, Colorado.
- Richter CF. 1958. *Elementary Seismology*. W. H. Freeman & Company, San Francisco, California.

Rohay AC, DW Glover, and SD Malone. 1985. *Time-Term Analysis of Upper Crustal Structure in the Columbia Basin, Washington*. RHO-BW-SA-435 P, Rockwell Hanford Operations, Richland, Washington.

Rohay AC, MD Sweeney, SP Reidel, DC Hartshorn, and RE Clayton. 2007a. *First Quarter Seismic Report for Fiscal Year 2007*. PNNL-16480, Pacific Northwest National Laboratory, Richland, Washington.

Rohay AC, MD Sweeney, SP Reidel, DC Hartshorn, and RE Clayton. 2007b. *Second Quarter Seismic Report for Fiscal Year 2007*. PNNL-16689, Pacific Northwest National Laboratory, Richland, Washington.

Rohay AC, MD Sweeney, DC Hartshorn, RE Clayton, and JL Devary. 2007c. *Third Quarter Seismic Report for Fiscal Year 2007*. PNNL-16872, Pacific Northwest National Laboratory, Richland, Washington.

Distribution

No. of Copies

OFFSITE

Administrator
Kennewick General Hospital
P.O. Box 6128
Kennewick, WA 99336

R. Carson
Department of Geology
Whitman College
345 Bayer Avenue
Walla Walla, WA 99362

T. Conrads
Parsons Constructors, Inc.
3005 E. Ainsworth Street
Pasco, WA 99301

G. Crawford
Washington Emergency Management
Division
Building 20, M/S: TA-20
Camp Murray, WA 98430-5122

Idaho Geological Survey
Morrill Hall
University of Idaho
P.O. Box 443014
Moscow, ID 83844-3014

J. Kimball
Defense Nuclear Facilities Safety Board
625 Indiana Avenue NW, Suite 700
Washington, DC 20004

No. of Copies

S. Lilligren
Nez Perce Tribe
P.O. Box 365
Lapwai, ID 83540

J. Litehiser
Bechtel National, Inc.
P.O. Box 193965
San Francisco, CA 94119-3965

- 2 Oregon Department of Geology and
Mineral Industries
Suite 965, 800 NE Oregon Street #28
Portland, OR 97232
ATTN: Library
I. Madin

N. Rasmussen
3140 Ravenshoe Drive
Las Vegas, NV 89134

S. P. Reidel
WSU Tri-Cities
2710 University Drive
Richland, WA 99354

P. Rizzo
105 Mall Boulevard
Monroeville, PA 15146

M. Stickney
Montana Tech University
Earthquake Studies Office
Butte, MT 59701

A. Tallman
1940 Quail Court
West Richland, WA 99353

**No. of
Copies**

- 5 University of Washington
Geophysics Program
P.O. Box 351650
Seattle, WA 98195-1650
ATTN: P. Bodin
R. Ludwin
S. Malone
R. Steele
J. Vidale
- 2 University of Washington
U.S. Geological Survey
P.O. Box 351650
Seattle, WA 98195-1650
ATTN: C. Weaver
T. Yelin
- U.S. Fish and Wildlife Service
3250 Port of Benton Boulevard
Richland, WA 99352
- U.S. Geological Survey
Mail Stop 977
345 Middlefield Road
Menlo Park, CA 94025
ATTN: T. Brocher
- 2 Washington Division of Geology and Earth
Resources
P.O. Box 47007
Olympia, WA 98504-7007
ATTN: Library
T. Walsh
- Washington State University
Department of Geology
P.O. Box 643420
Pullman, WA 99164-2812
- R. Whale
Shell E&P
200 N. Dairy Ashford
Houston, TX 77079

**No. of
Copies**

I. G. Wong
URS Corporation
1333 Broadway, Suite 800
Oakland, CA 94612

J. Zollweg
Boise State University
Department of Geosciences
Boise, ID 83725

ONSITE**7 DOE Richland Operations Office**

B. L. Charboneau	A6-33
K. L. Flynn	A6-35
T. Y. Hale	A7-90
R. D. Hildebrand	A6-38
M. R. Moreno	H6-60
J. G. Morse	A6-38
Y. T. Sherman	A6-35

DOE Office of River Protection

L. F. Miller	H6-60
--------------	-------

Bechtel Hanford, Inc.

K. R. Fecht	H9-01
-------------	-------

5 CH2M HILL Hanford Group, Inc.

F. J. Anderson	H6-03
D. D. Bachland	S5-15
J. R. Freeman-Pollard	R3-77
D. T. Heimberger	S5-25
F. M. Mann	H6-03

Duratek Federal Services Hanford

R. T. Wilde	H8-44
-------------	-------

**No. of
Copies****10 Fluor Hanford, Inc.**

M. E. Brown	G5-51
D. A. Conners	T3-28
J. T. Curtis	B3-15
S. A. Fargo	H8-60
S. M. Faulk	A3-05
B. H. Ford	E6-35
D. G. Horton	E6-35
T. P. Morales	A3-05
M. I. Wood	H8-44
M. T. York	N2-02

Stoller

R. McCain	B2-62
-----------	-------

**No. of
Copies****Washington State Department of Ecology**

J. Caggiano	H0-57
-------------	-------

18 Pacific Northwest National Laboratory

R. E. Clayton	K6-75
J. L. Devary (5)	K6-96
D. C. Hartshorn	K6-75
P. E. Moore	J2-09
B. E. Opitz	K6-75
A. C. Rohay	K6-75
H. T. Schaef	K6-81
M. D. Sweeney (5)	K6-75
Hanford Technical Library (2)	P8-55